



LIBRARIES

UNIVERSITY OF WISCONSIN-MADISON

Sketches in architecture : containing plans and elevations of cottages, villas and other useful buildings, with characteristic scenery. 1793

Soane, John, 1753-1837

London: Taylor, Holborn, 1793

<https://digital.library.wisc.edu/1711.dl/LLHTSJ7BGVYQO9A>

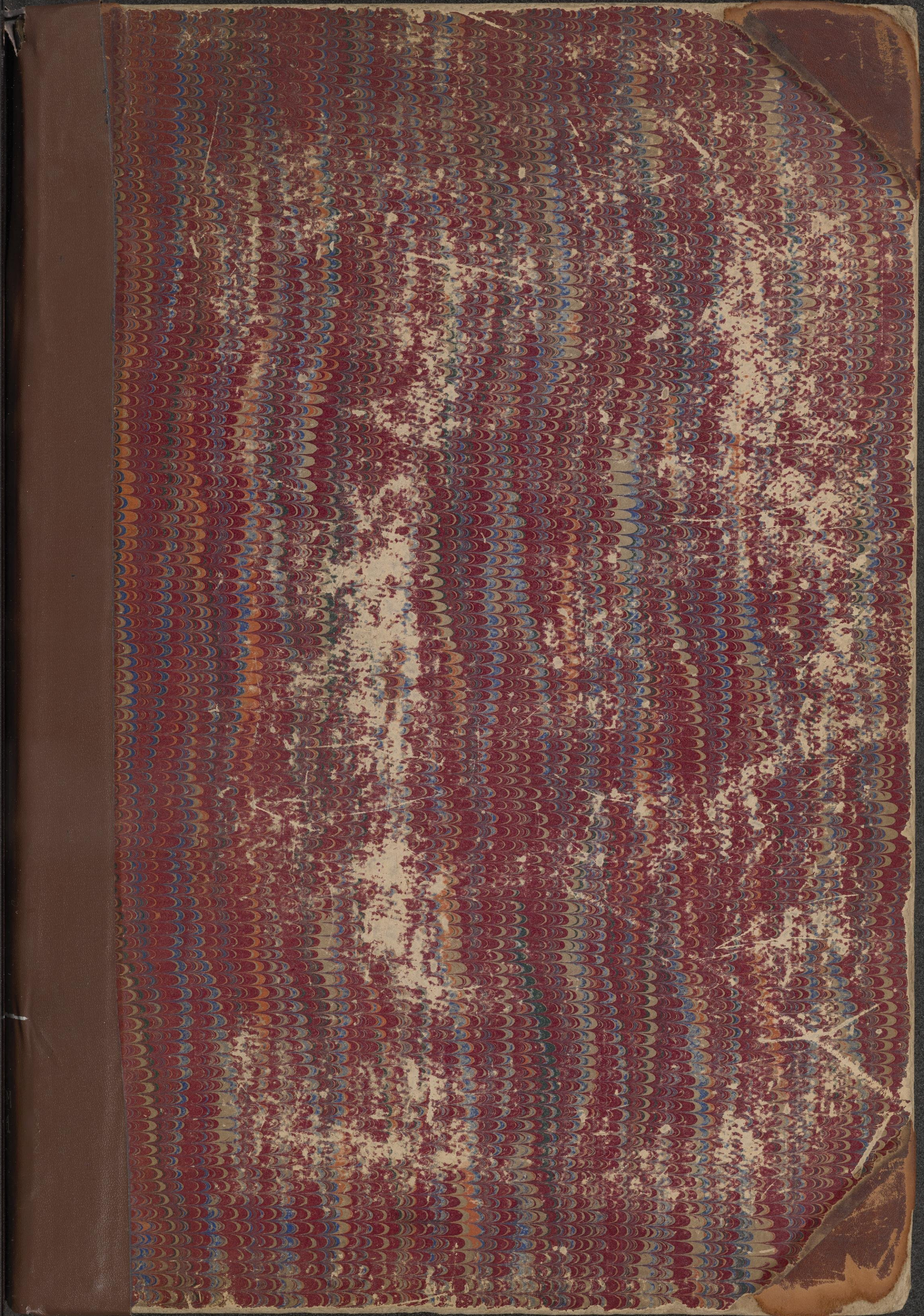
<http://rightsstatements.org/vocab/NKC/1.0/>

For information on re-use see:

<http://digital.library.wisc.edu/1711.dl/Copyright>

The libraries provide public access to a wide range of material, including online exhibits, digitized collections, archival finding aids, our catalog, online articles, and a growing range of materials in many media.

When possible, we provide rights information in catalog records, finding aids, and other metadata that accompanies collections or items. However, it is always the user's obligation to evaluate copyright and rights issues in light of their own use.



University of Wisconsin
LIBRARY.

No. 10316

Wim
+ Sol

Presented by

ETCHINGS IN ARCHITECTURE

PLANS AND ELEVATIONS

COTTAGE IN VILLAGE

BY JOHN SOANE

LONDON 1800

PRINTED BY J. JOHNSON

· SKETCHES · IN · ARCHITECTURE ·

· CONTAINING ·

· PLANS · AND · ELEVATIONS ·

· OF ·

· COTTAGES · VILLAS ·

· AND · OTHER · USEFUL · BUILDINGS ·

· WITH · CHARACTERISTIC · SCENERY ·

· BY · JOHN · SOANE ·

· ARCHITECT · TO · THE · BANK · OF · ENGLAND · AND ·

· MEMBER · OF · THE · ROYAL · ACADEMIES ·

· OF · PARMA · AND · FLORENCE ·

· LONDON · MDCCXCIII ·

· PUBLISHED · BY · MESSRS · TAYLOR · HOLBORN ·

SKETCHES IN ARCHITECTURE
INTRODUCTION

CONTAINING

PLANS AND ELEVATIONS

OF

COTTAGES, VILLAS

AND OTHER USEFUL BUILDINGS

WITH CHARACTERISTIC SCENERY

BY JOHN SOANE

ARCHITECT TO THE BANK OF ENGLAND AND

MEMBER OF THE ROYAL ACADEMIES

OF PARMIA AND FLORENCE

LONDON MDCCLXIII

PUBLISHED BY MESSRS TAYLOR HOLBORN

Rare Books

10316

+Wim

+551

OVERSIZE
SHELVING

INTRODUCTION.

SOME years since, I published a collection of plans, elevations, and sections of buildings already executed, and chiefly on a large scale; which work having been favourably received, I am thereby induced to offer another publication on the same subject, but on a smaller scale, consisting of cottages for the laborious and industrious part of the community, and of other buildings generally calculated for the real uses and comforts of life, and such as are within the reach of moderate fortunes.

In all buildings for the various purposes of civil life, much depends on local arrangements. In cottages the rooms are unavoidably small, few in number, and frequently crowded with inhabitants. Their ground floors should be raised, at least, three or four steps from the soil; they should be placed in the most open and airy situations, perfectly dry and warm, built with the best and most durable materials, and well supplied with good water.

The same precautions apply to the villas; the designs for which, as well as the cottages, have been made for particular persons and situations.

As to estimates, however desirable, nothing certain can be advanced until the situation and local circumstances are known and considered; it is then, and then only, that they can be made with that accuracy which every man wishes for, and ought to be possessed of, before he begins building.

*Lincoln's Inn Fields,
March, 1793.*

JOHN SOANE.

EXPLANATION OF THE
INTRODUCTION.

SOME years since I published a collection of plans, elevations, and sections of buildings already executed, and chiefly on a large scale; which work having been favourably received, I am thereby induced to offer another publication on the same subject, but on a smaller scale, consisting of cottages for the laborious and industrious part of the community, and of other buildings generally calculated for the real uses and comforts of life, and such as are within the reach of moderate fortunes.

In all buildings for the various purposes of civil life, much depends on local arrangements. In cottages the rooms are unavoidably small, few in number, and frequently crowded with inhabitants. Their ground floors should be raised at least three or four steps from the soil; they should be placed in the most open and airy situations, perfectly dry and warm; built with the best and most durable materials, and well supplied with good water.

The same precautions apply to the villas; the designs for which, as well as the cottages, have been made for particular persons and situations.

As to estimates, however desirable, nothing certain can be advanced until the situation and local circumstances are known and considered; it is then, and then only, that they can be made with that accuracy which every man wishes for, and ought to be possessed of, before he begins building.

JOHN SOANE

LONDON, 1793

EXPLANATIONS of the PLATES.

P L A T E I.

Intended for an Entrance to a Gentleman's Seat.—This plan has only one floor, containing a porch, a living-room 14 by 10, a pantry and small-beer cellar 5 feet by 5 feet 6 inches, and a small chamber with closets and other conveniences.

P L A T E II.

This plan contains two different dwellings, each consisting, on the ground-floor, of a small lobby for the warmth and comfort of the cottage, fitting-room 12 by 15, wash-house, a stair-case and pantry under the same, and a chamber over the fitting-room finished into the roof to gain height. The chimneys are built back to back, on principles of œconomy, as well as for the exterior appearance.

P L A T E III.

This plan also contains two distinct dwellings, each having, on the ground-floor, a porch, a living-room 13 by 16, a kitchen, a wash-house, a stair-case and pantry under it, with two chambers of moderate dimensions.

P L A T E IV.

This plan, for two distinct dwellings, has nevertheless one porch common to both. Each cottage contains on the ground-floor, a living-room 13 by 16, with the addition of a window in a large recess; a wash-house, and stair-case with pantry under it; two chambers on the first floor; and one large garret over the two chambers, lighted from the gable end.

P L A T E V.

Plans of the four preceding Designs.

P L A T E VI.

This plan has two distinct dwellings, and one porch: the living-room is 14 by 15 feet 6 inches, wash-house 9 by 11, stair-case and pantry under it, and on the first floor are two chambers.

P L A T E VII.

Each of the cottages shewn in this design has two rooms on the ground-floor, a stair-case and pantry under it, a closet by the side of the chimney, a porch common to both, and three chambers of different dimensions and on different levels.

P L A T E VIII.

These cottages are more decorated than those in the preceding designs, and contain two rooms on the ground-floor, with a cellar, pantry, and stair-case. Trunks of trees decorated with woodbines and honeysuckles would make the principal features of the porch. There are two chambers on the first floor, a small store-room, and light closet under the stair-case.

P L A T E IX.

Likewise contains two cottages in every respect similar. The living-room is 12 by 16; the wash-house 8 by 10; a porch formed with trunks of trees, and covered with reeds; a stair-case, and pantry under it. On the first floor are two chambers, and a light closet under the stair-case.

P L A T E X.

Plans of the four preceding Designs.

P L A T E XI.

Contains the Elevation as proposed; in the execution four pilasters are added.

P L A T E XII.

This plate contains the plans of the ground and chamber-floors of a House built at Reading in Berkshire, in 1791.—It is somewhat elevated, and contains a small entrance, two parlours each about 17 feet 6 inches by 17 feet 6 inches, a store-room, a kitchen and other offices; and also an accompting-house, with chambers, dressing-rooms, and water-closet, &c. over them.

P L A T E XIII.

The Elevation of a House designed for an Artift.—It was intended to be faced with Norfolk bricks, with stone cornices, and dressings to the arches, &c.

P L A T E XIV.

The plans of the ground and chamber-floors, which are fully explained on the plate. It was also intended to have garrets in the roof: the end fronts were to have pediments to introduce light into the rooms without the aid of dormer windows, which can never be used but in cases of absolute necessity, are always un-
fightly, and a sure indication of a depraved taste. The offices are omitted in the elevation by accident.

P L A T E XV.

The Elevation of a House designed for *William Colhoun, Esq.* near Thetford in Norfolk.

P L A T E XVI.

The plans of the two principal stories, over which attics were intended, and the whole of the basement was proposed to be arched.

P L A T E XVII.

The Entrance Front of Chilton Lodge, near Hungerford, in Berkshire, now building for *William Morland, Esq.*—As most of the materials were furnished from the buildings pulled down, the adoption of certain forms and dimensions did not always depend on the wish of the architect, particularly in the portico.

P L A T E XVIII.

The Front to the Lawn of the same House.

P L A T E XIX.

Contains the plans of the hall and chamber-floors. The eating-room is 18 feet 6 inches by 24 feet 6 inches. The drawing-room 18 feet 6 inches by 24 feet 6 inches. Library 20 feet by 12. The space occupied by "the upper part of the offices," with the chambers over this part, might easily be formed into a gallery 18 feet wide and 42 feet long, which being coved into the roof would give ample height.

P L A T E XX.

The Front to the Lawn of a House intended to have been built in the county of Durham.

P L A T E XXI.

The plan of the principal floor. In this design part of the offices are introduced into the body of the house, by which mode the chimney-shafts are continued to the same height, and the chimneys thereby prevented from smoking.

P L A T E XXII.

The Elevation of a House designed for *Lady Granard*, and proposed to be built in Ireland.

P L A T E XXIII.

Contains the plans of the ground floor, first floor, and attics. The drawing-room is placed on the first floor, to command the prospects more fully, which were represented as being particularly beautiful.

P L A T E XXIV.

Elevation of a Villa.

P L A T E XXV.

The plans of the hall and chamber stories.

P L A T E XXVI.

Elevation of a Villa designed for a Gentleman in the North of England, in the year 1781.

P L A T E XXVII.

Plan of the principal floor, which contains a small vestibule, dressing-room and water-closet. The floor of the kitchen and offices is four feet below the level of the principal rooms: over the pantry and scullery are two small rooms coved into the roof; and under the steward's apartments are arched rooms, with a communication from them to the kitchen wing.

P L A T E XXVIII.

Elevation of a Hunting Casine.

P L A T E XXIX.

Plan of the principal floor, which is raised on a terrace. The kitchen and other offices are intended to be placed in the basement story.

P L A T E S XXX AND XXXI.

Contain another design for the same Casine.

P L A T E XXXII.

Elevation of a Villa designed for a Gentleman in Berkshire.

P L A T E XXXIII.

The plan of the principal floor.—It is perhaps needless to observe, that every thing on this floor has been sacrificed to the library. In one of the wings were to be placed the eating-room and the kitchen offices: the library was also intended to answer the purposes of a drawing-room, and the room shewn in the plan as a drawing-room would generally have been used as a breakfast-room or anti-room.

P L A T E XXXIV.

Elevation of a small Villa.—The arched recesses were semi-circular in the drawing, but, by a mistake of the engraver, are made considerably more. Much of the expence of this design would be saved by omitting the columns.

P L A T E XXXV.

Plan of the ground floor.—The level of the kitchen and offices is four feet lower than the other rooms, which admits of a mezzanine for a water-closet, and dressing-room or chamber over part of them; the drawing-room is proposed to be over part of the eating-room, and coved into the roof.

P L A T E XXXVI.

P L A T E XXXVI.

Elevation of a Villa near Strabane in Ireland, belonging to the *Marquis of Abercorn*.—The house and offices were built for the late Marquis by Mr. Charles Steuart. The fronts have been considerably altered, as well as the whole of the interior arrangement.

P L A T E XXXVII.

Contains the plan of the principal floor, with its improvements.—The portico in the front of the gallery formed a part of the original plan, but has been taken away to make the centre part of the gallery more chearful.

P L A T E XXXVIII.

Elevation of a National Mausoleum.—This design was made at Rome in the year 1779, in consequence of the death of the great *Earl of Chatham*, for the reception of his remains, and for all other great and virtuous characters who have deserved well of their country.—My mind was naturally led to this subject, having gained the gold medal of the Royal Academy for the best design of a triumphal bridge, and being at that time pursuing my studies in Italy, at the expence of his Majesty.

P L A T E XXXIX.

Contains the Plan.

a. a. a. Entrances decorated with statues, urns, &c.

b. b. Steps to the catacombs.—The sarcophagi with their inscriptions are placed to be seen from the terrace, thereby attracting the attention of contemplative minds, furnishing them with ample scope for reflection, and preserving the memory of renowned persons.

c. c. Rooms for the keeper.

d. e. These parts of the mausoleum to be decorated with bassi-relievi, statues, busts, and historical paintings.

f. f. f. Terraces.

g. g. Pedestals with groups of colossal sculpture. The rusticated basement is decorated with sepulchral urns, sarcophagi, military trophies, &c.

P L A T E XL.

Elevation of a *Belle-Vue* building, designed for *Sir Sampson Gideon*, now Lord Eardley, and proposed to have been erected at Erith in Kent.

P L A T E XLI.

Design for the *Castello d'Acqua*, now building at Wimpole in Cambridgeshire, a seat belonging to the *Earl of Hardwicke*. Its exterior representation is that of a mausoleum. The snakes are cut in the solid, and do not project, as shewn by mistake in this view.

P L A T E XLII.

Design for an Ice-House.

P L A T E XLIII.

Plans of the three last Designs.



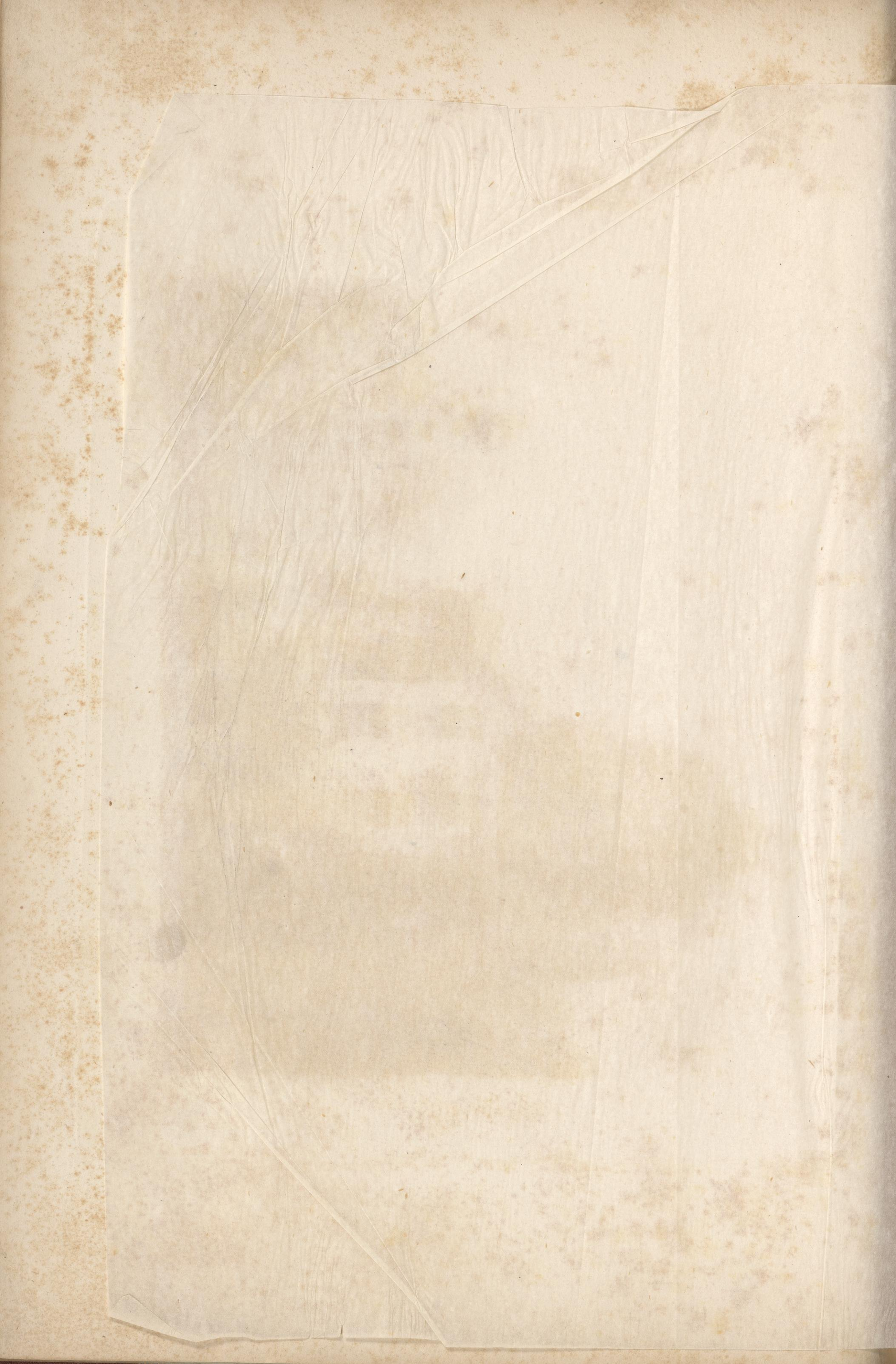








PLATE V.

Plans.

Plate 1.

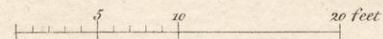
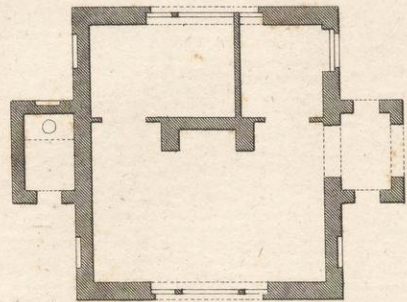


Plate 2.

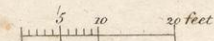
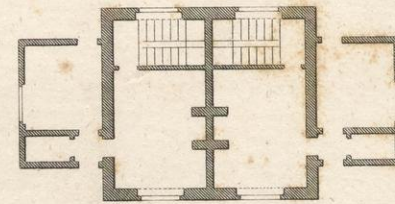


Plate 3.

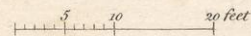
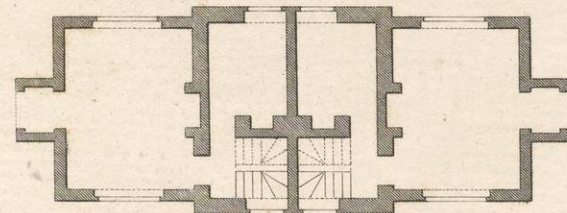


Plate 4.

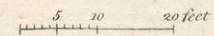
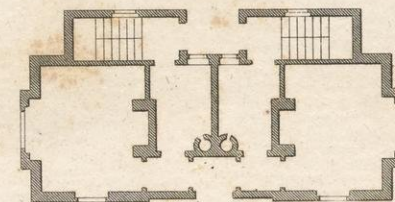








PLATE IX.



PLATE X.

Plans.

Plate 6.

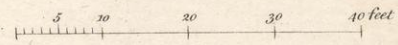
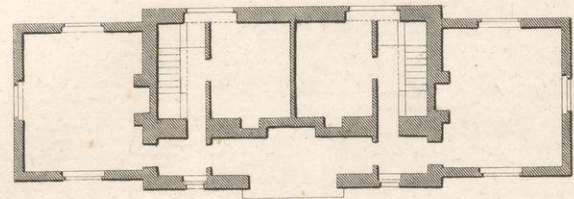


Plate 7.

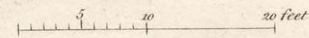
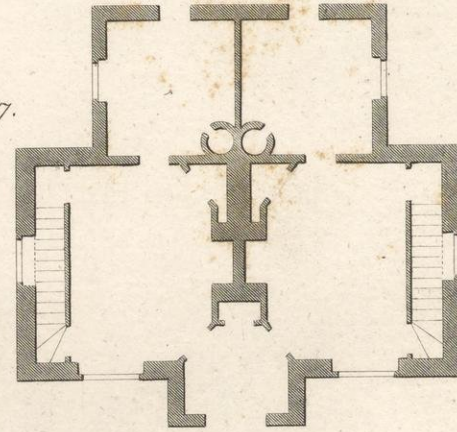


Plate 8.

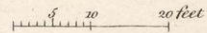
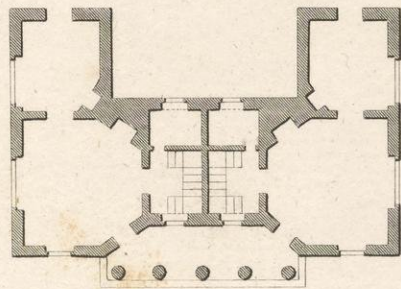
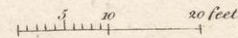
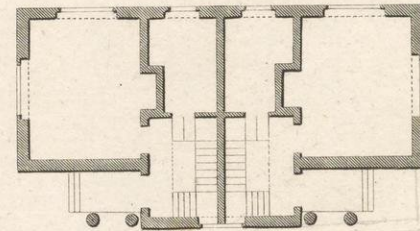


Plate 9.

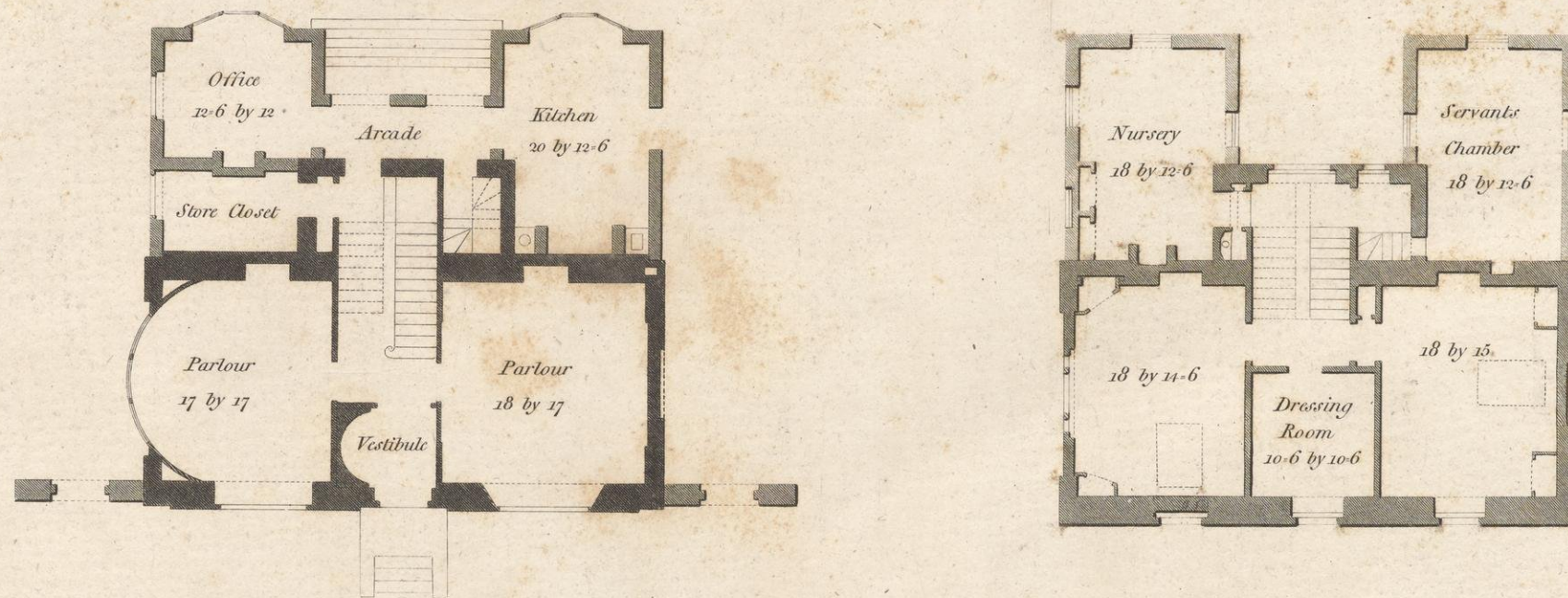


Published by L&J Taylor, High Holborn, London, Jan^r. 1st. 1793.





Plans to Plate 11.



10 0 10 20 30 40 Feet

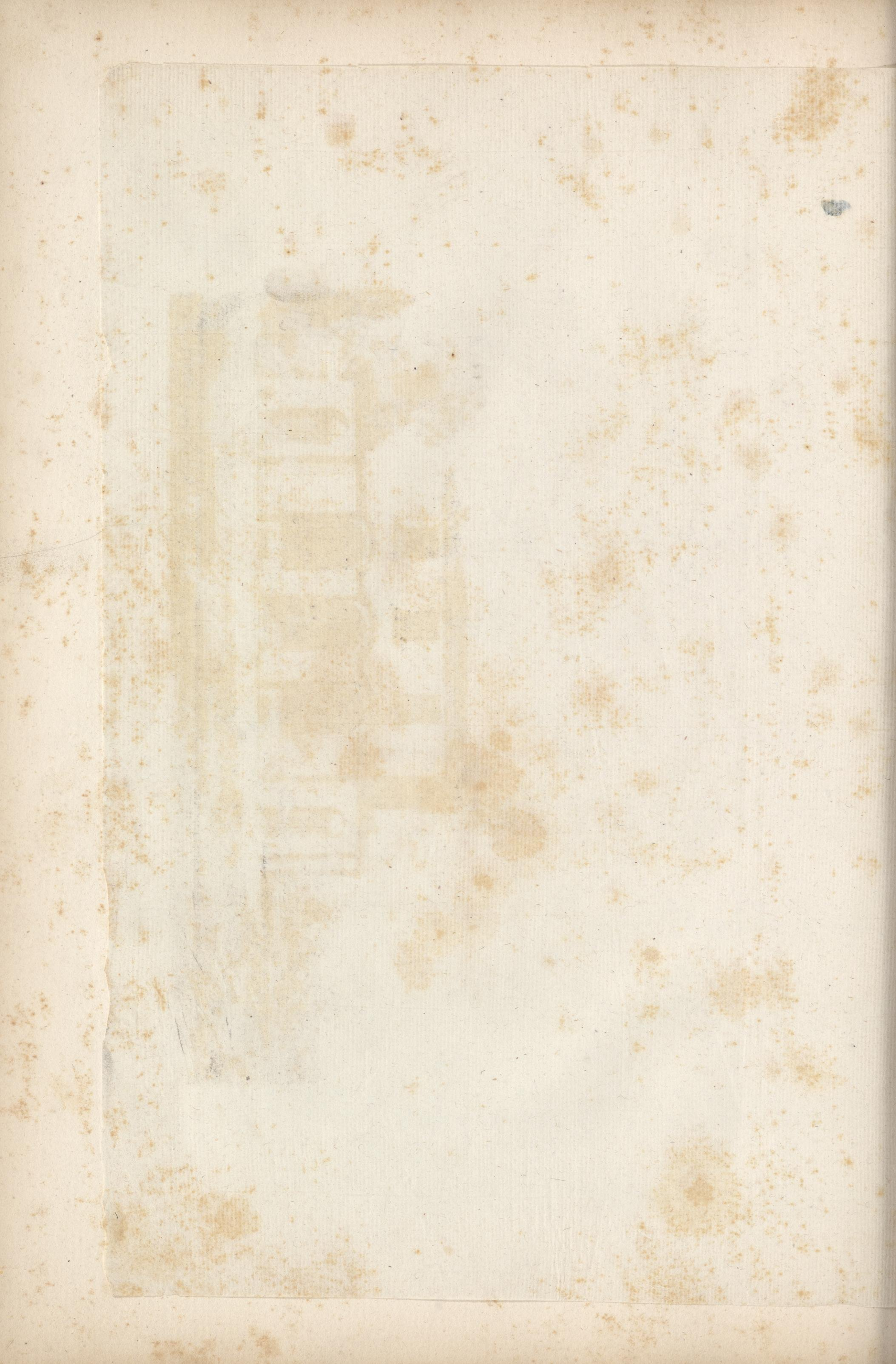


PLATE XIII.



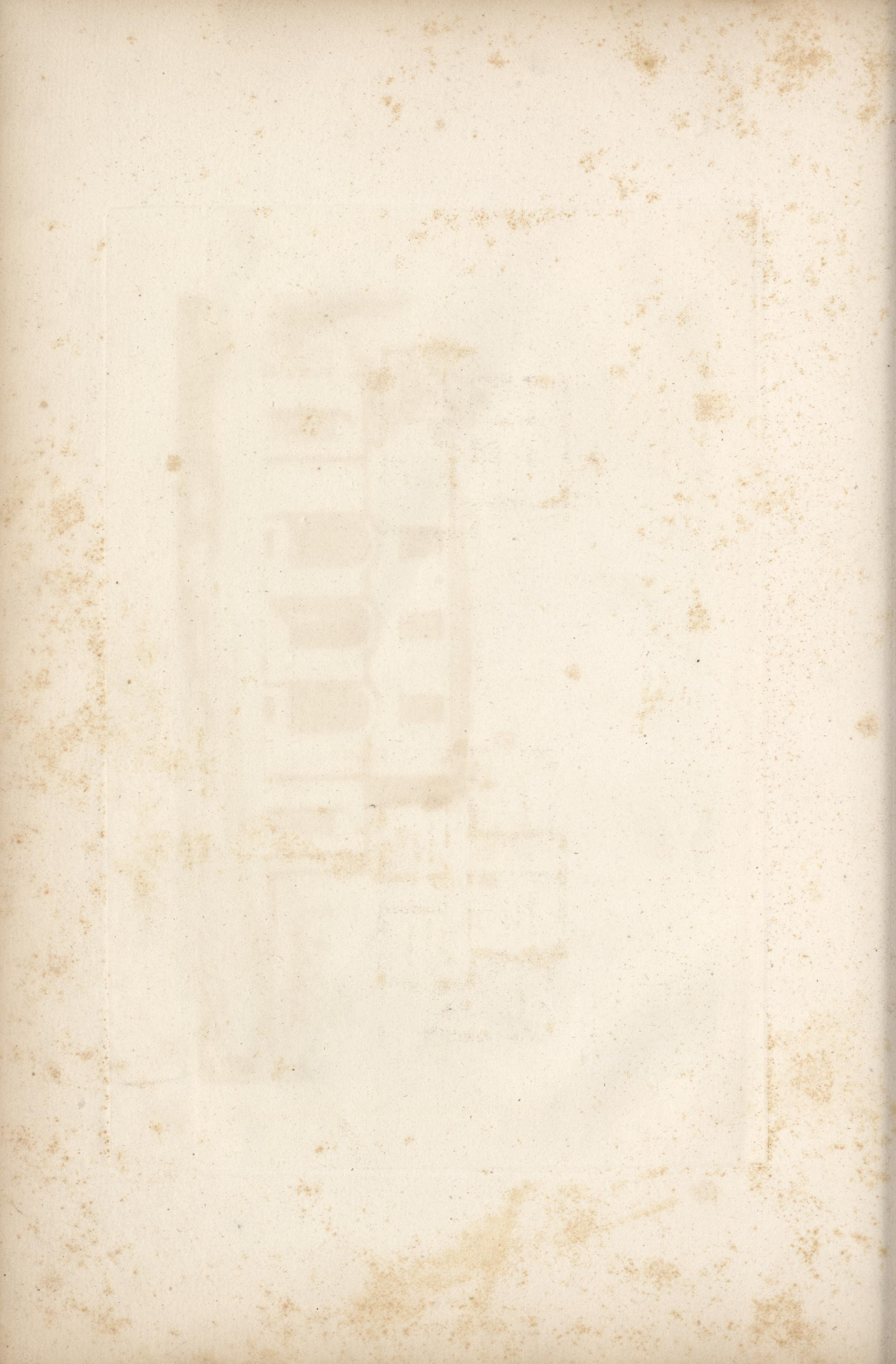
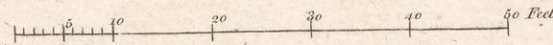
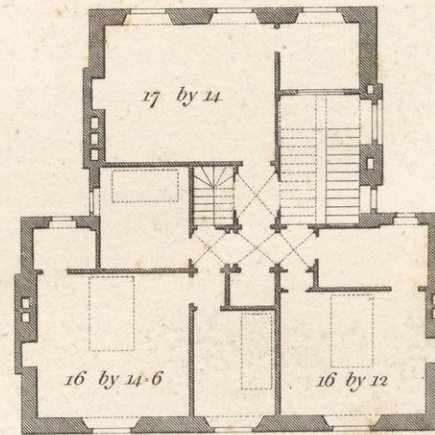
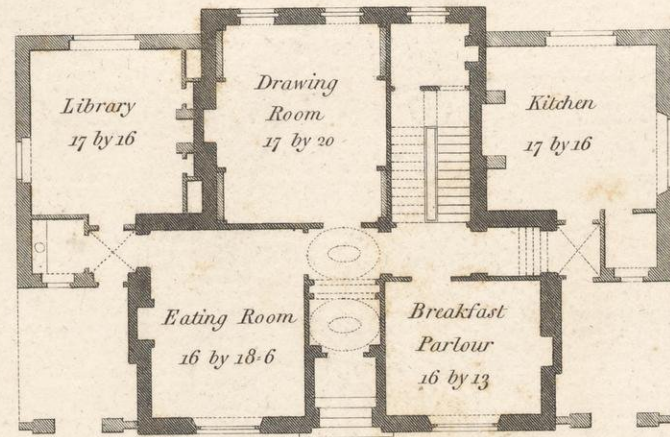


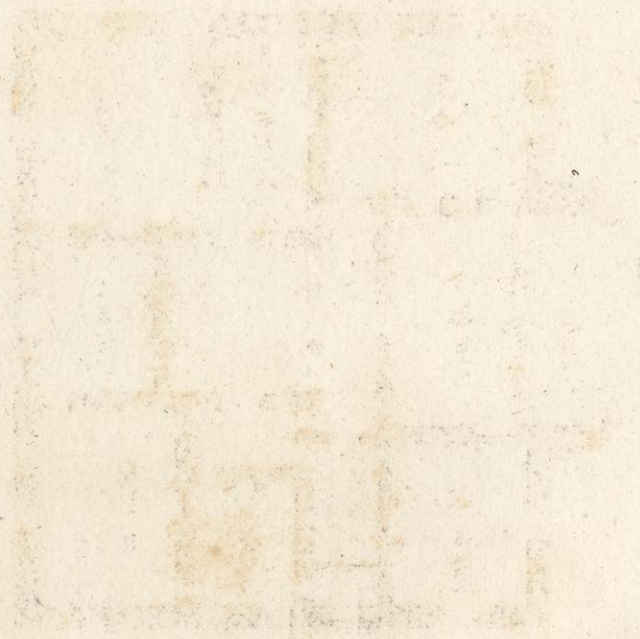
PLATE XIV.

Plans to Plate 13.

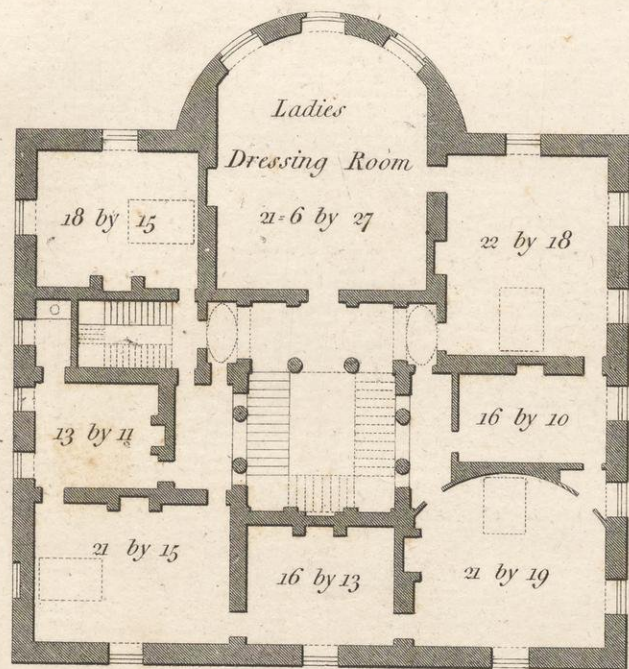


Published by I. & J. Taylor, High Holborn, London, Jan. 1st 1793.

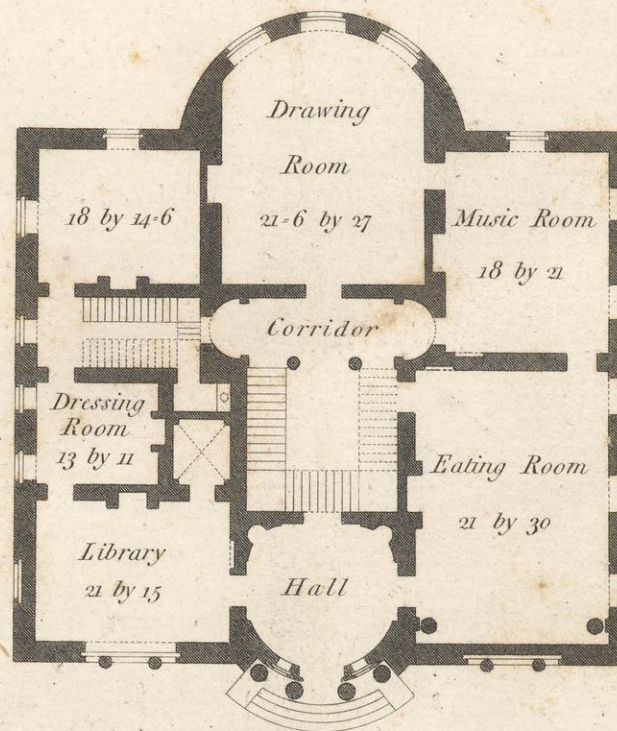




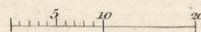
Plans to Plate 15.



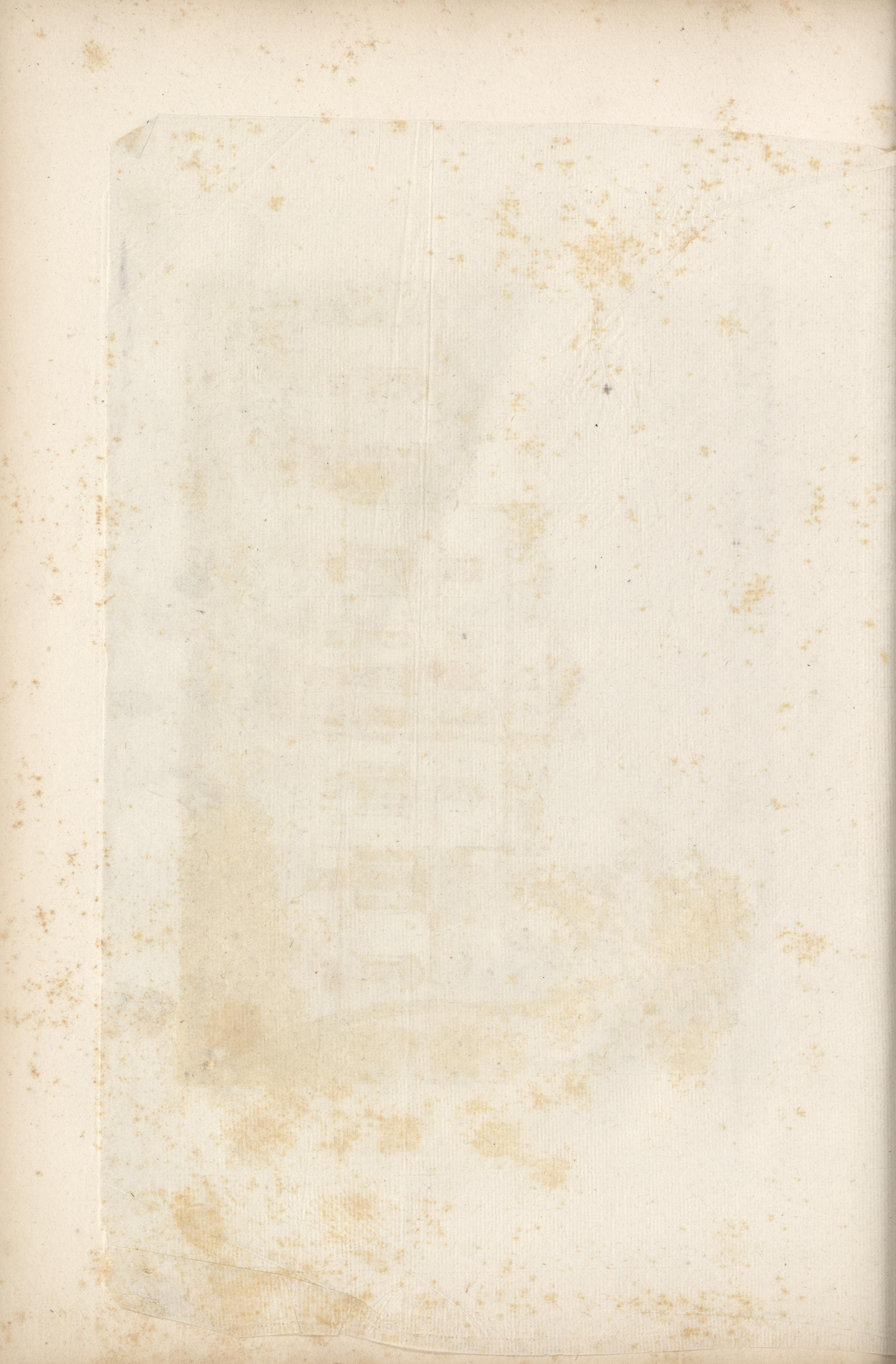
Chamber Plan.



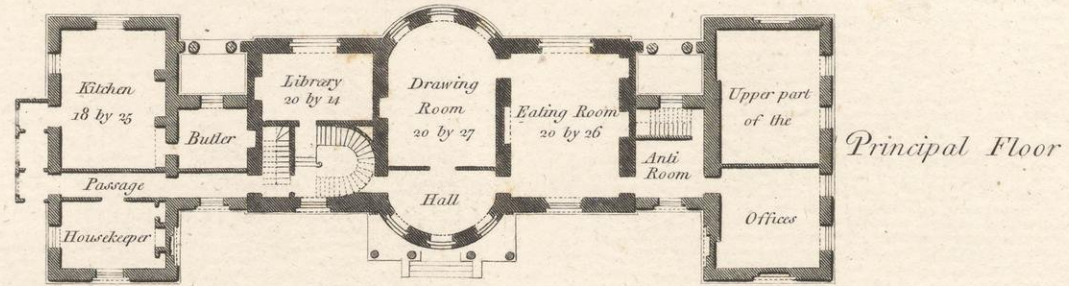
Ground Plan.



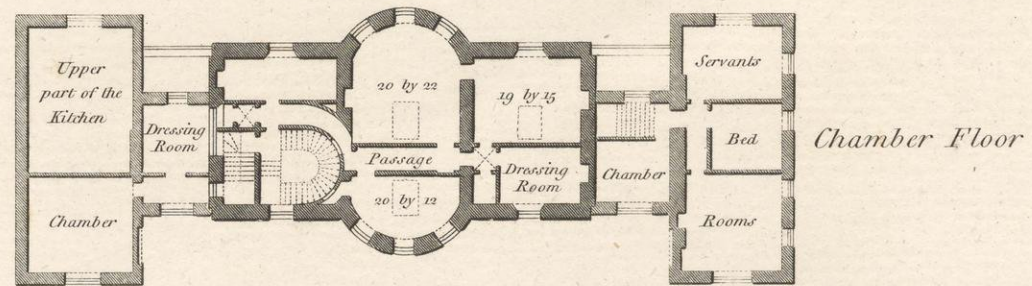








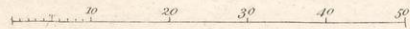
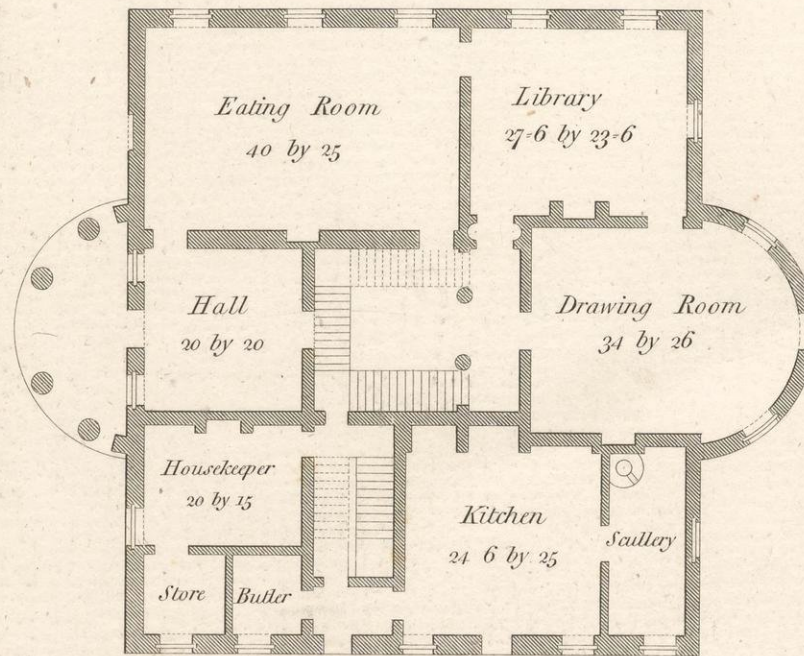
*Plans to Plates
17 & 18.*



10 0 10 20 30 40 Feet

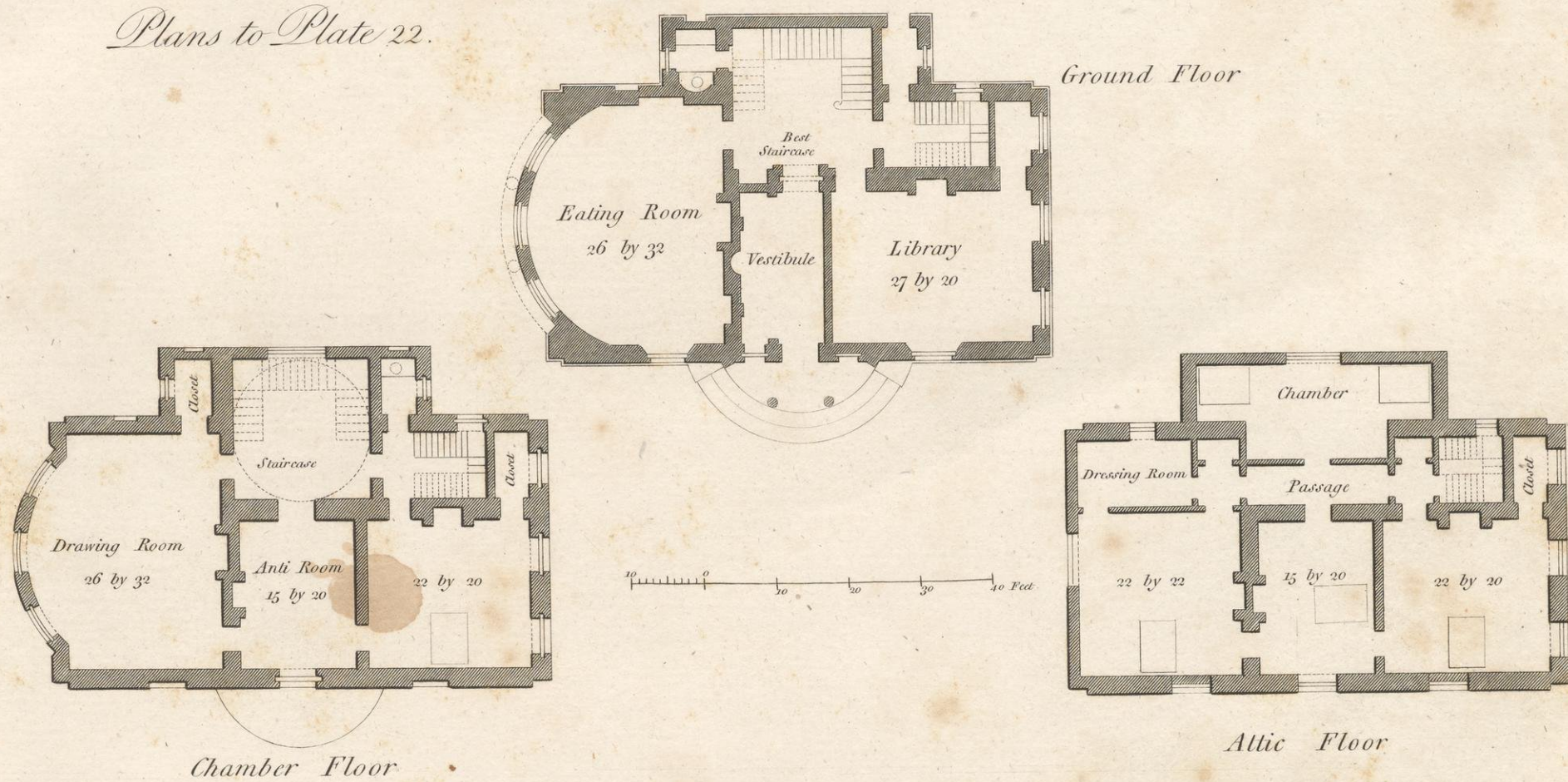


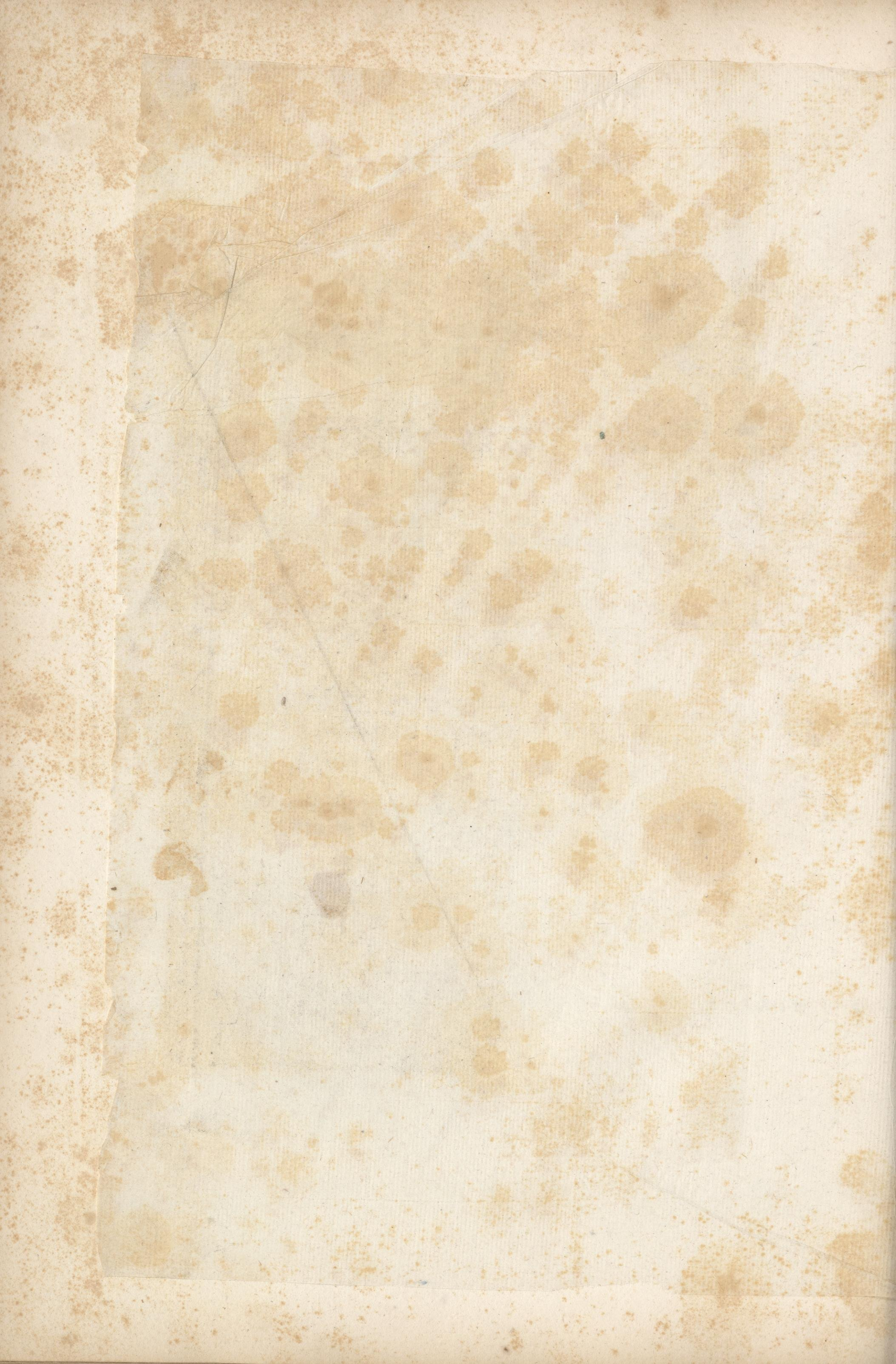
Plan to Plate 20.





Plans to Plate 22.







Plans to Plate 24.

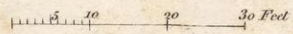
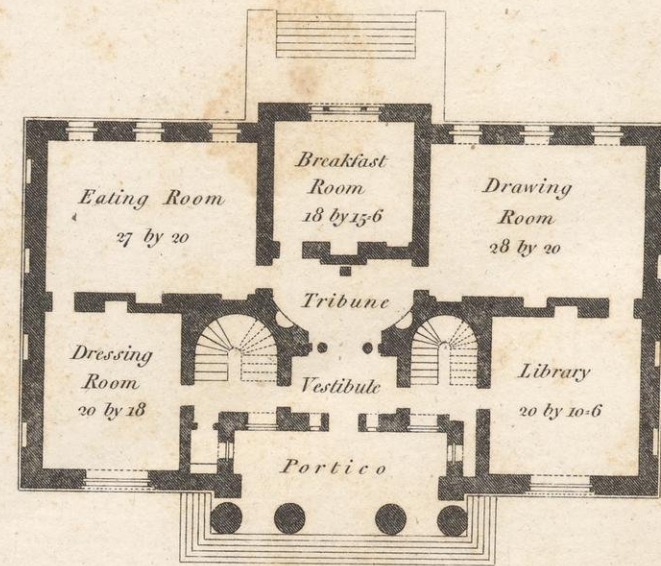
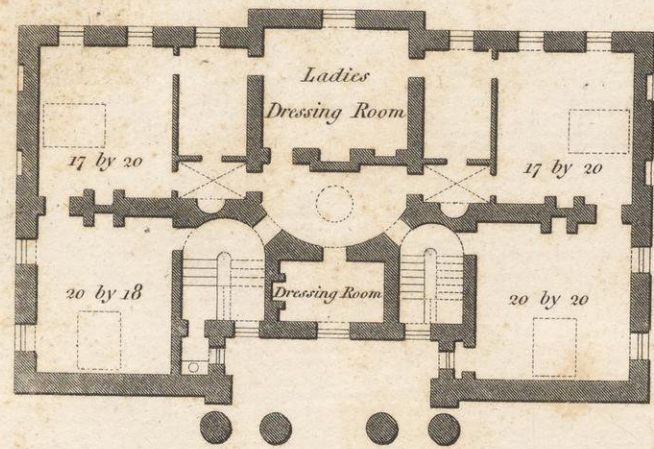
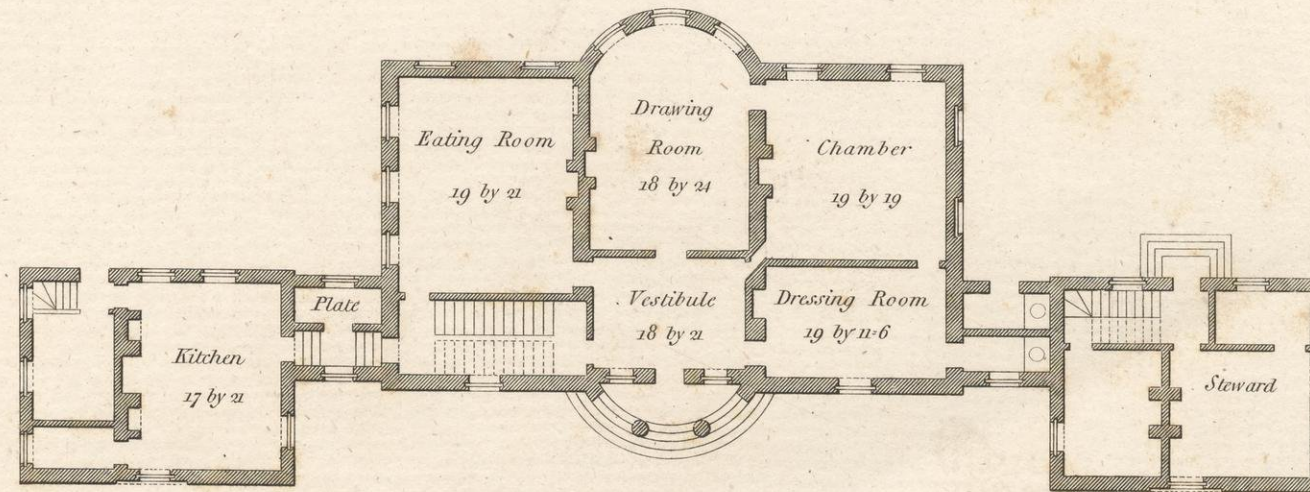






PLATE XXVII.

Plan to Plate 26.



15 20 30 40 Feet

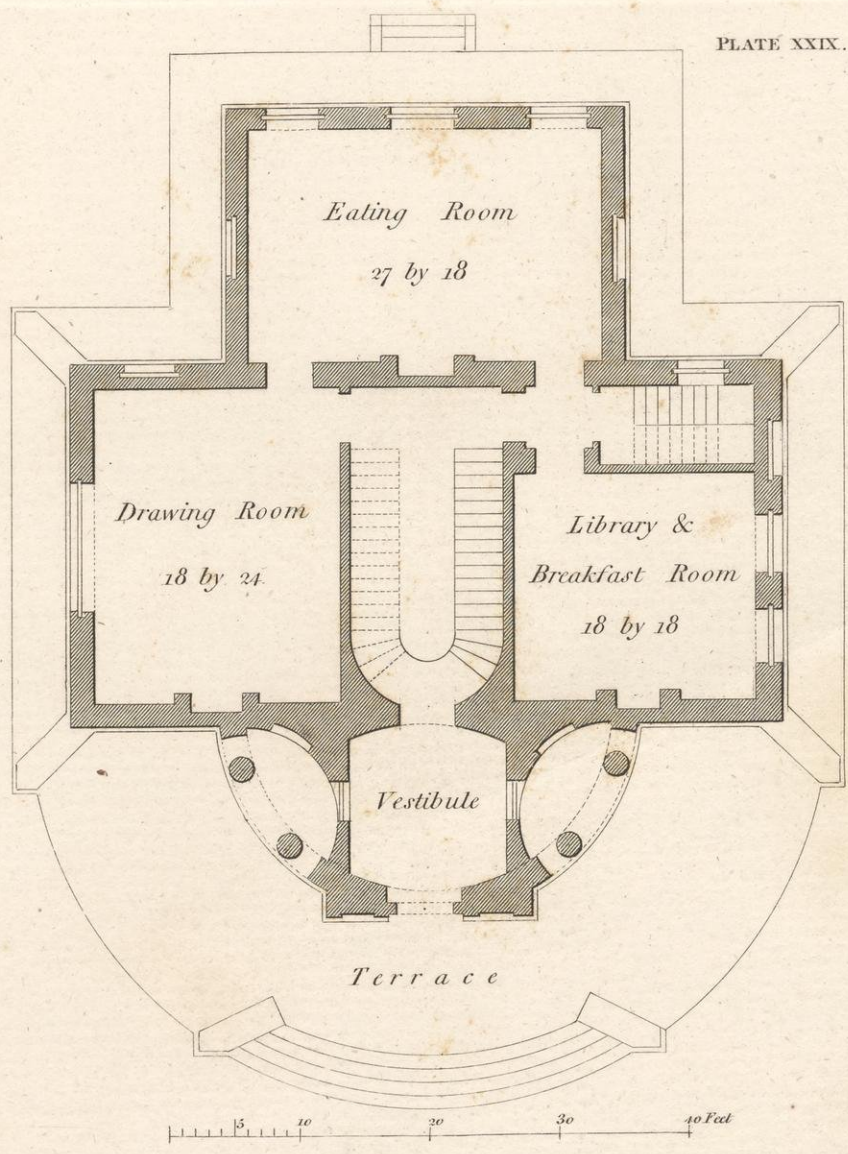
Published by I. & J. Taylor, High Holborn, London, Jan^y 1793.



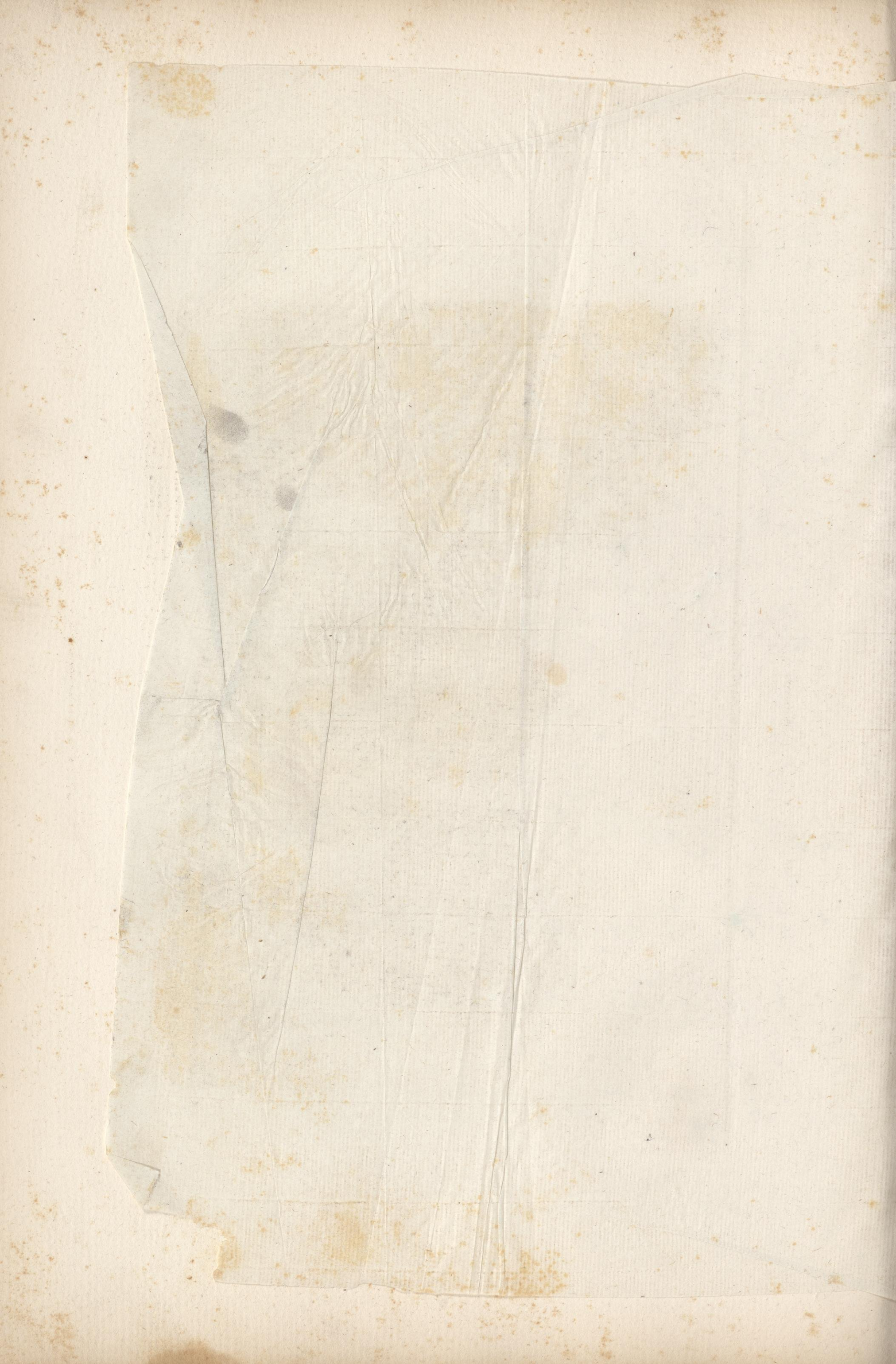


Plan to Plate 28.

PLATE XXIX.

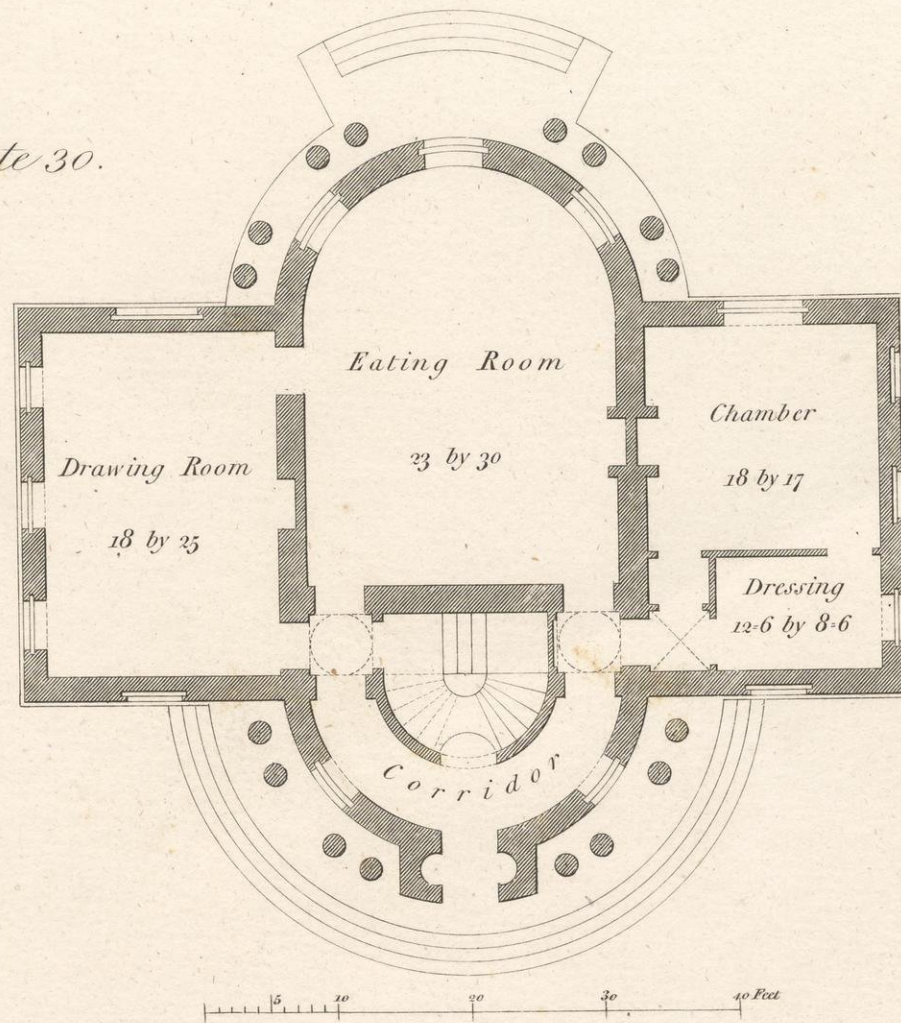


Published by I. & J. Taylor, High Holborn, London, Jan. 1st 1793.



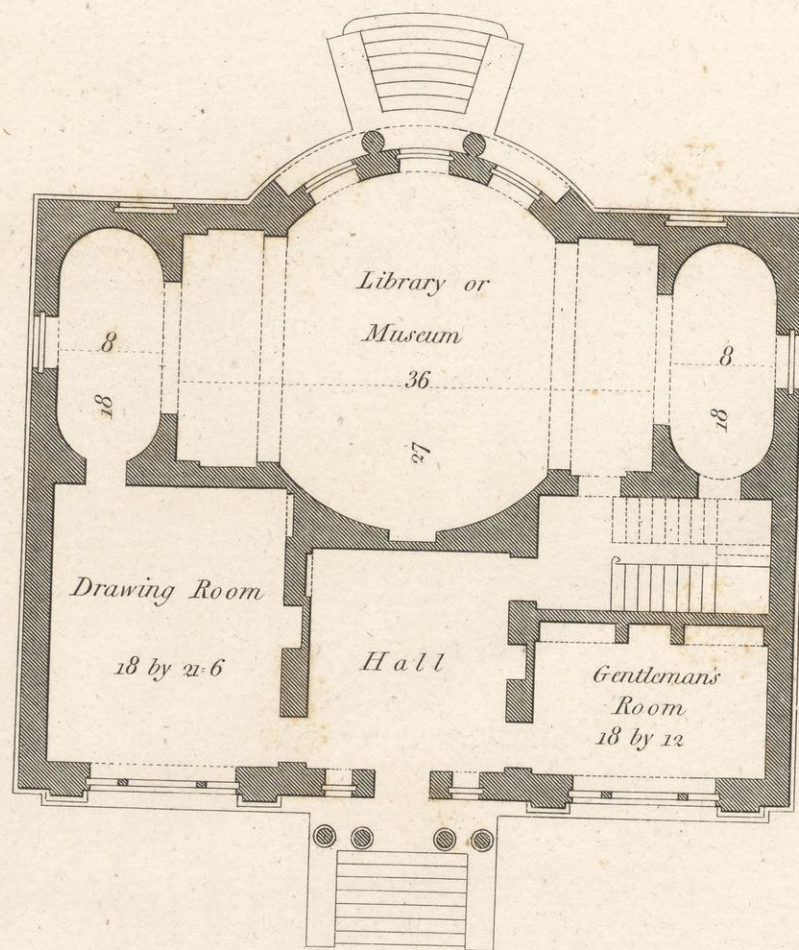


Plan to Plate 30.

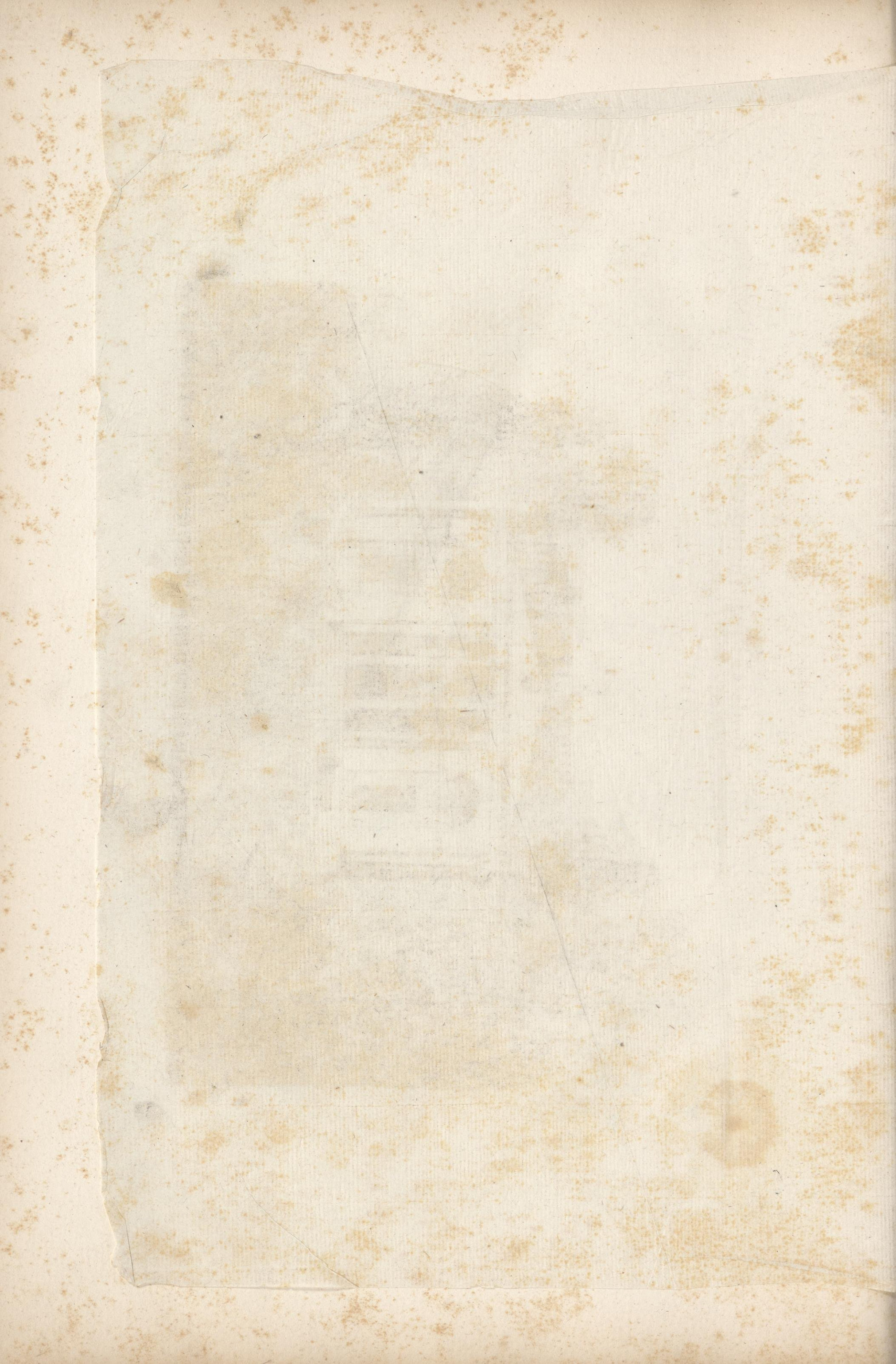




Plan to Plate 32.

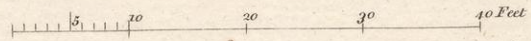
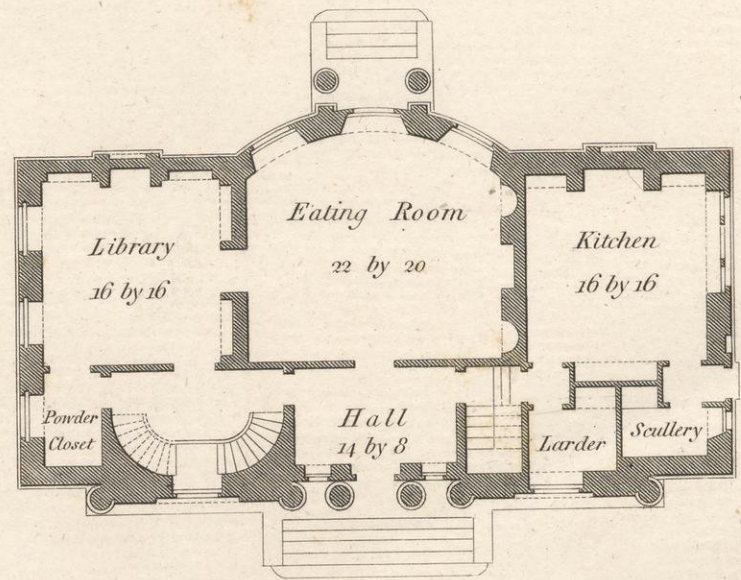


5 10 20 30 40 Feet





Plan to Plate 34.

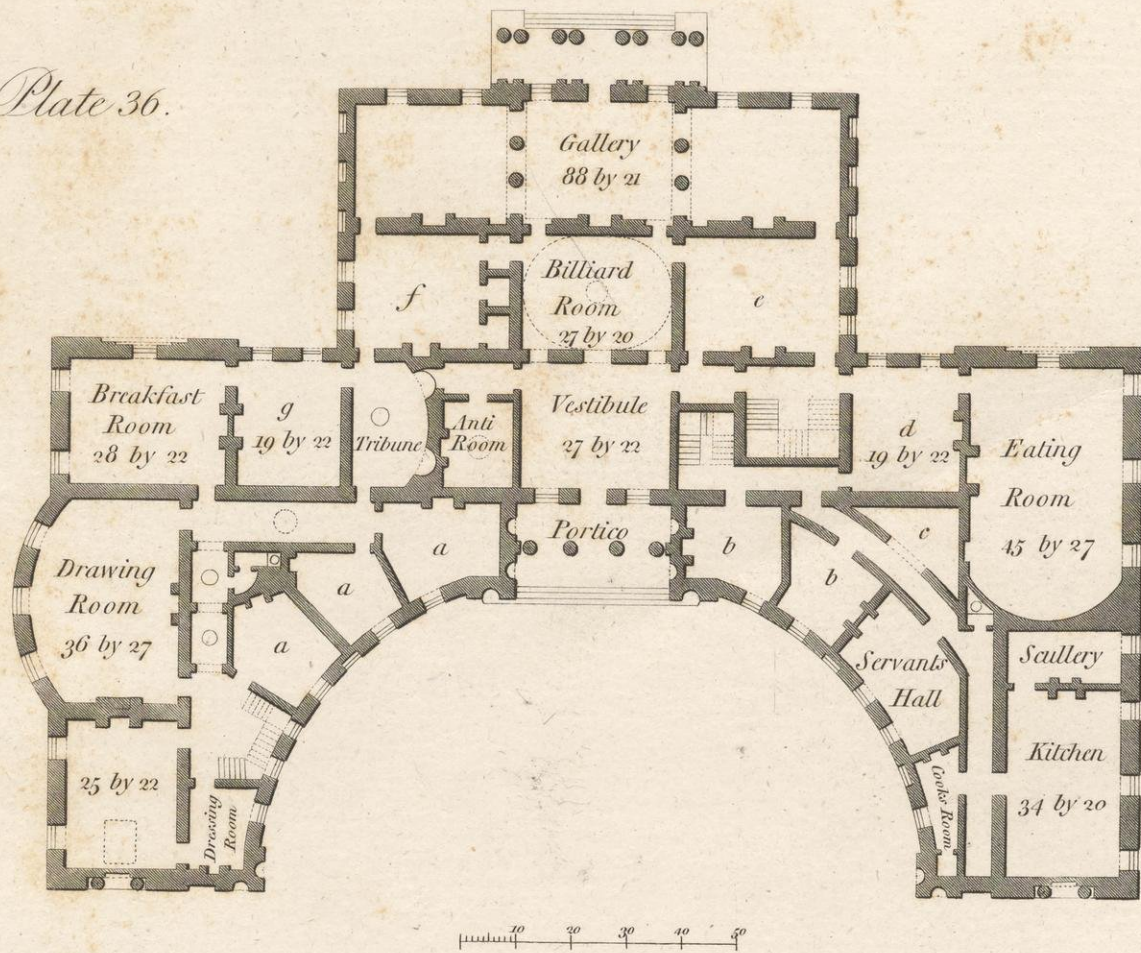


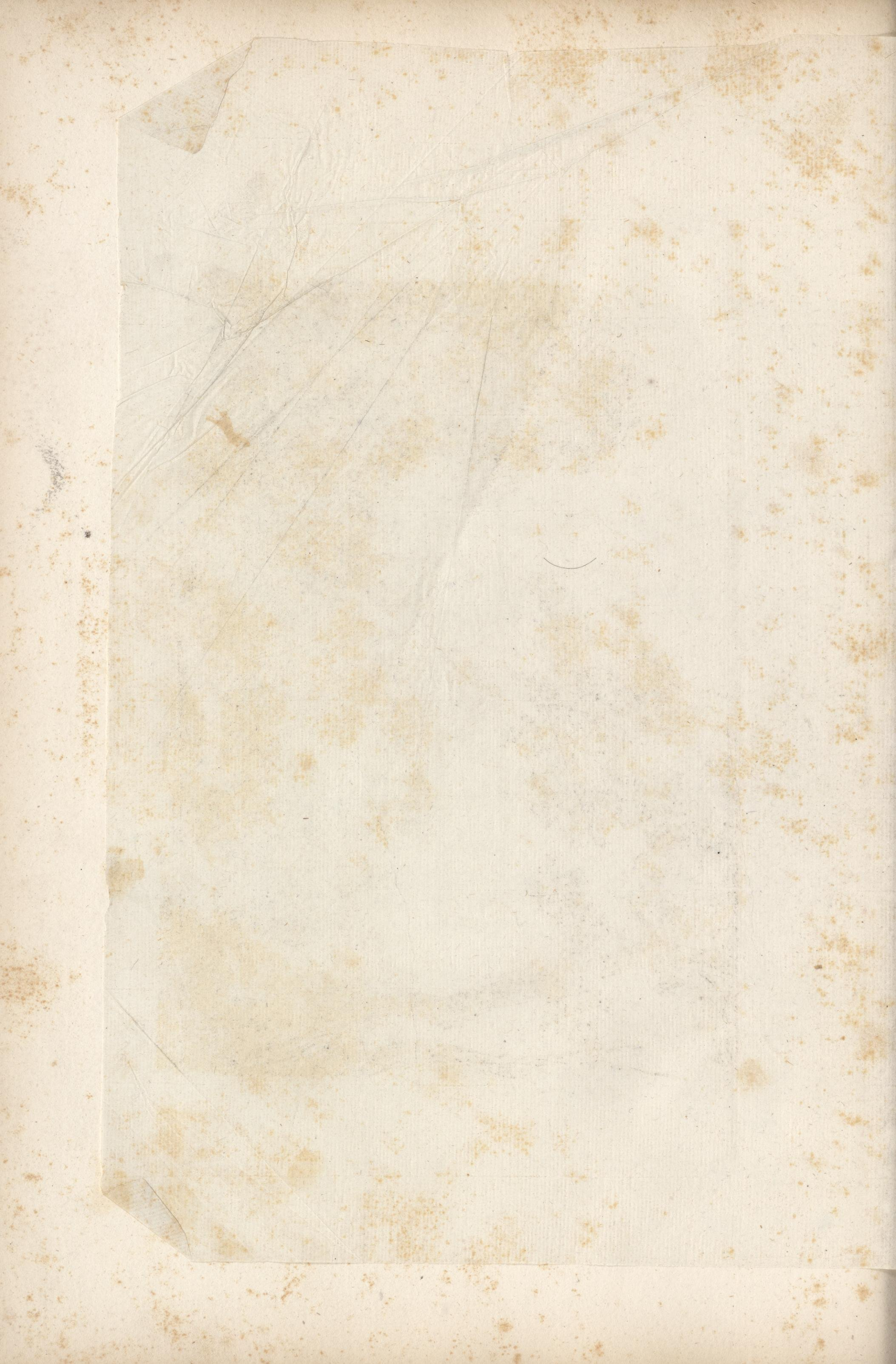






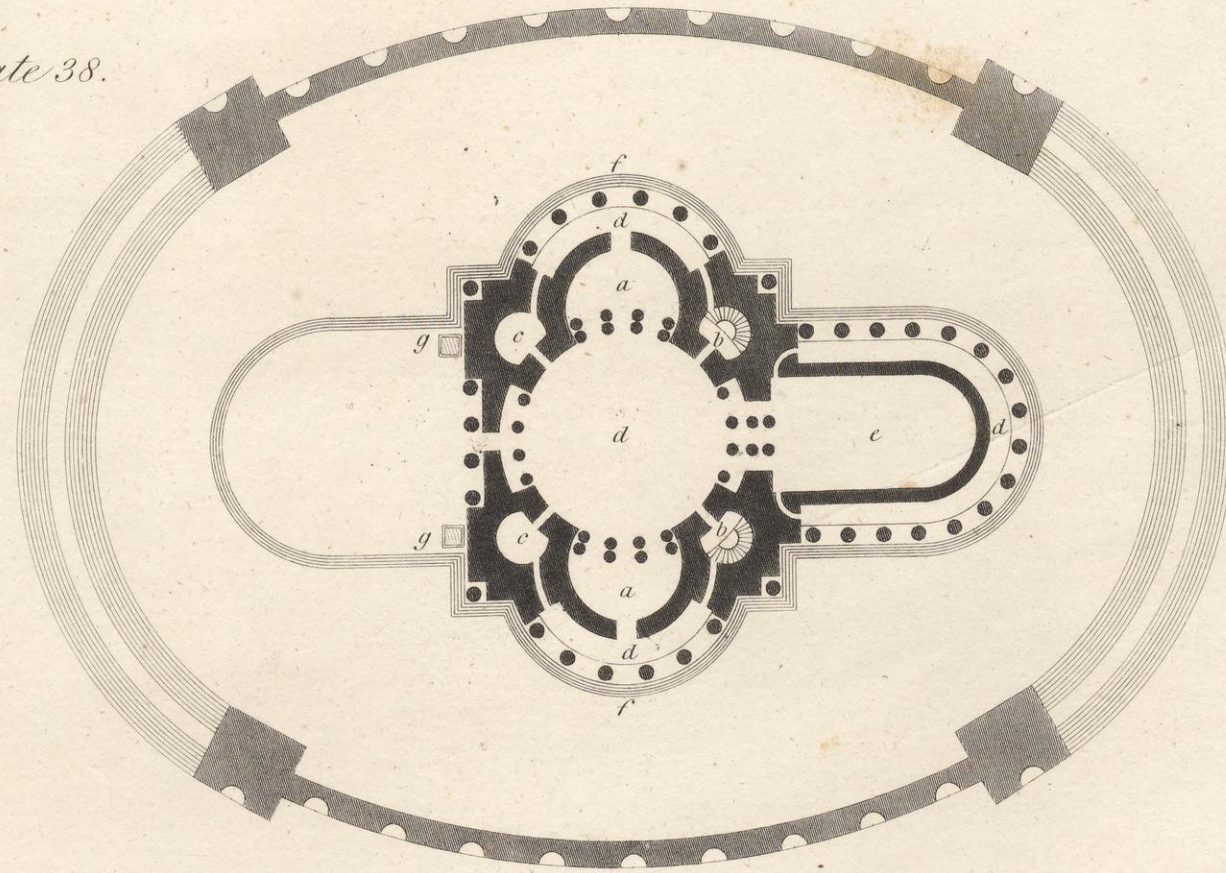
Plan to Plate 36.





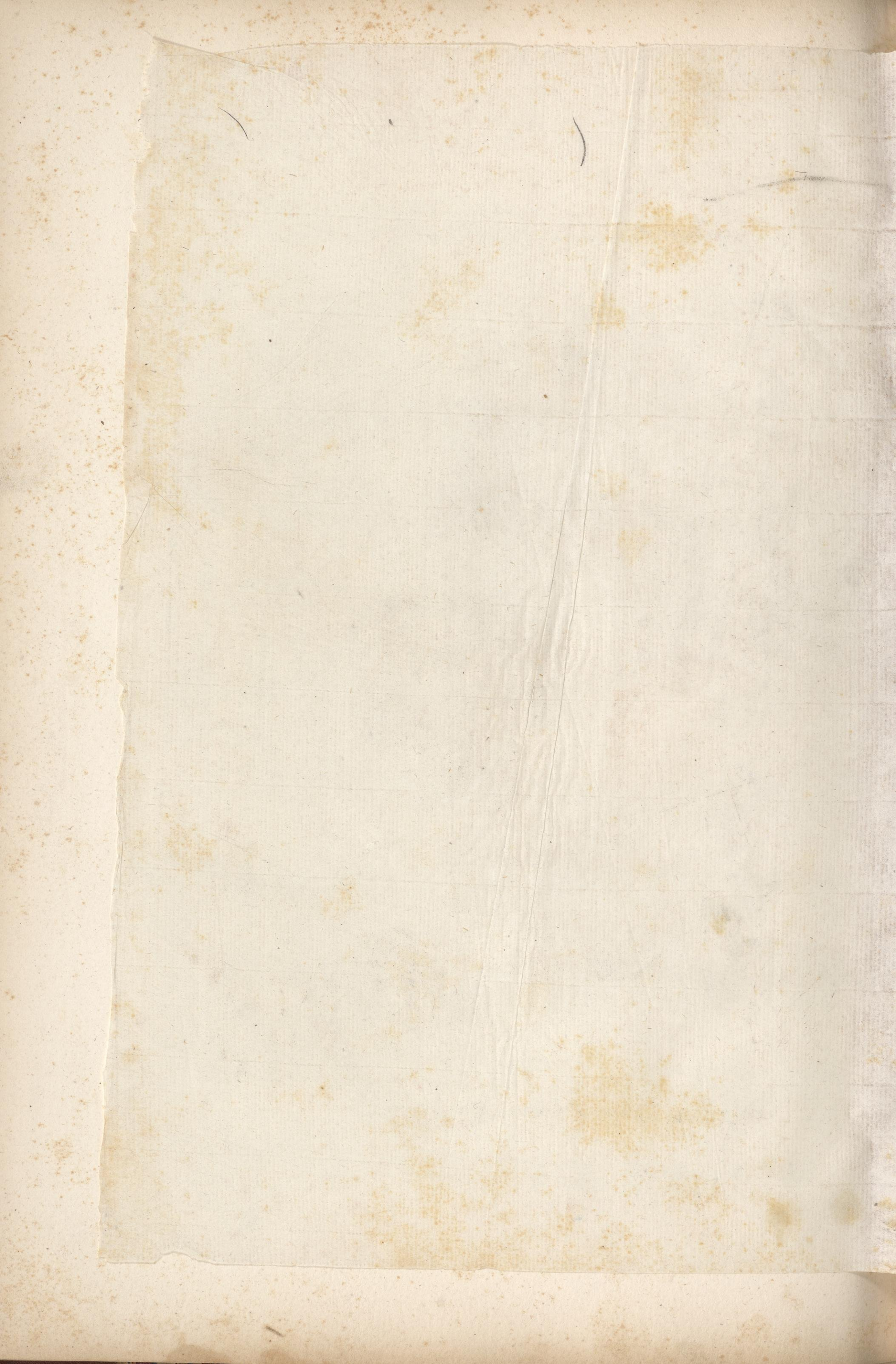


Plan to Plate 38.

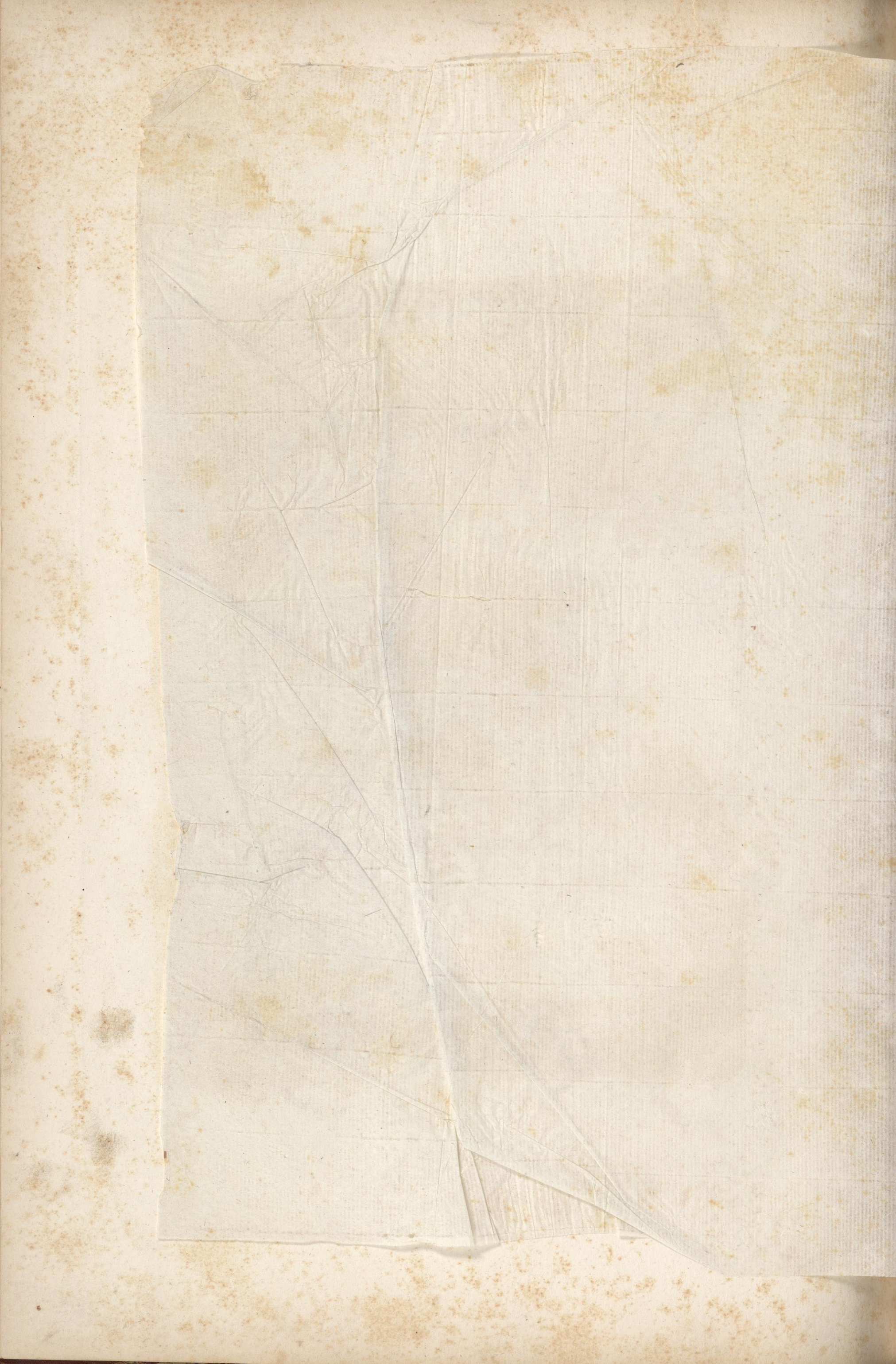


Scale of 0 10 20 30 40 50 60 feet

Published by L. & J. Taylor, High Holborn, London, Jan^r. 1793.



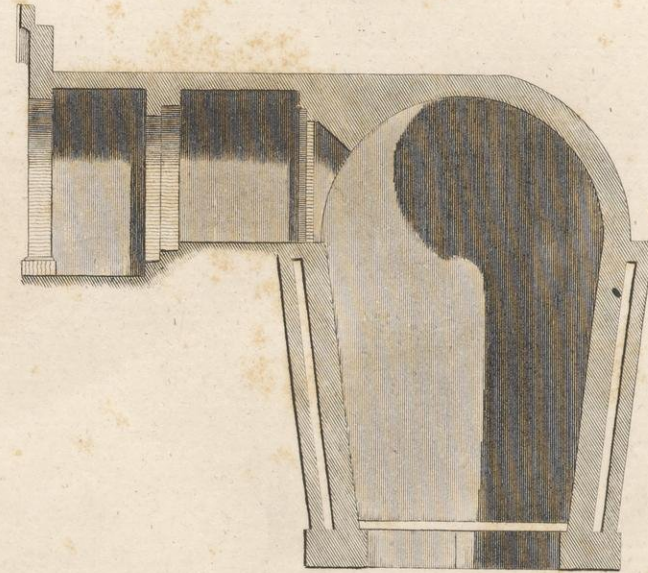
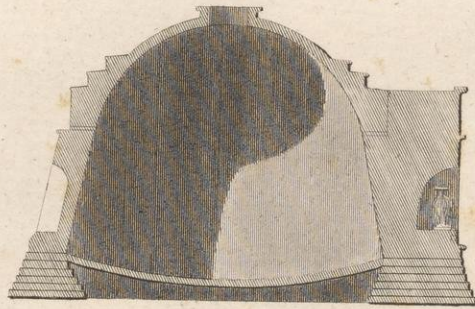




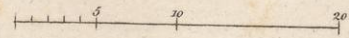




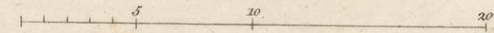
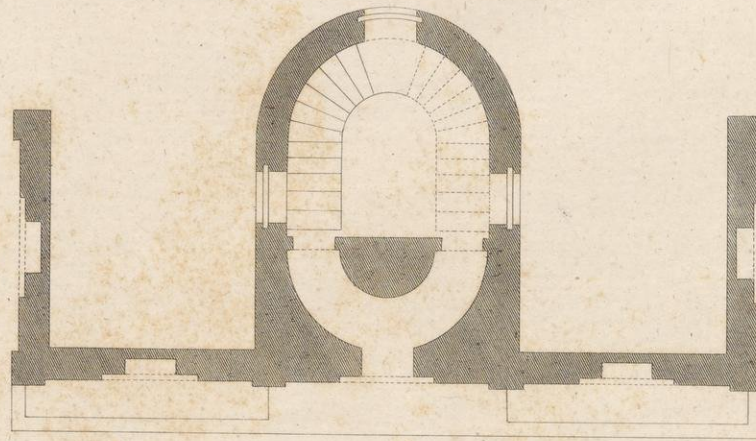




Plan to Plate 40.



*Section & Plan
of
Castello D'Acqua,
Plate 41.*



*Section & Plan
of Ice House,
Plate 42.*

