

Polka ~~OR#24~~

OR#55 Pij Schottische

OR#26 Lars Frykerud's Schottische

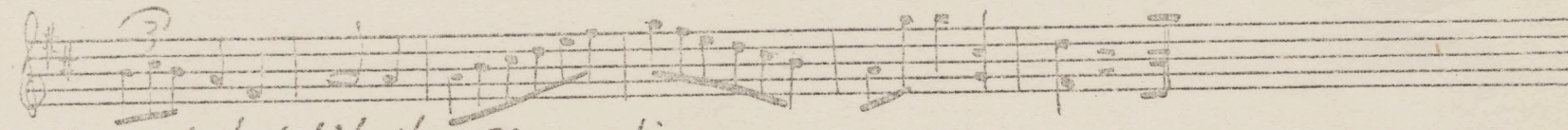
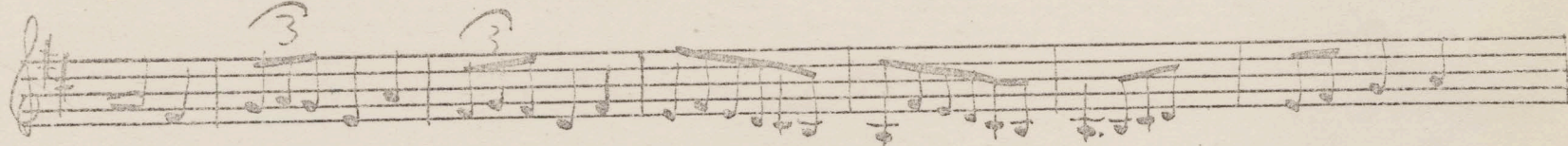
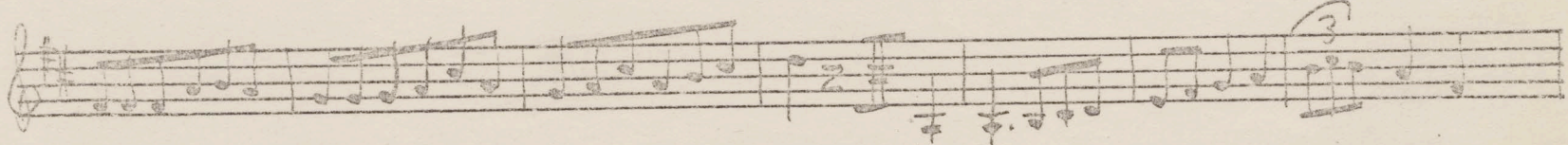
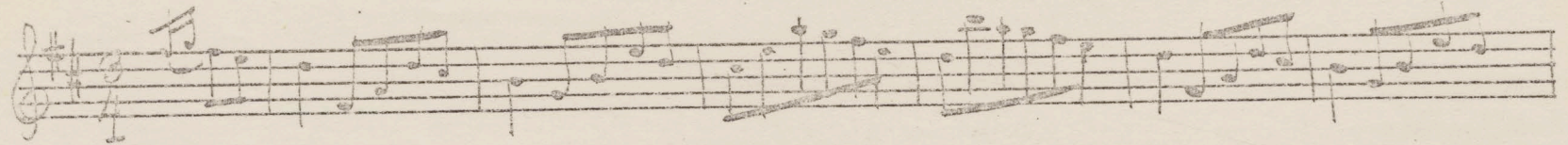
Livet i Finnskogarna OR#25

Bal i Hallingdalen OR#1

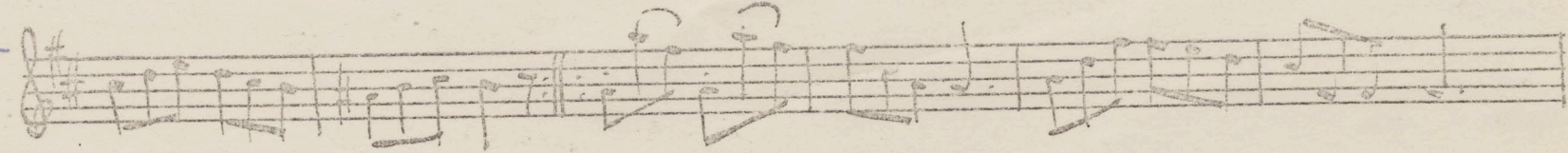
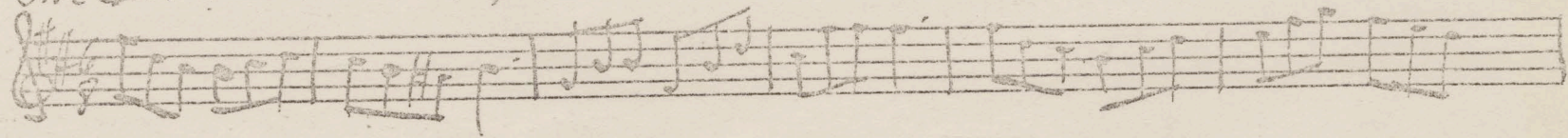
Gamle ole Mat'is (Hemlands Toner) O.R.# 84

Waltz

ORindlisbacher 1937.



The Girl that hit the Pipe. Jig.



Polka O.R.# 24 ~~#26~~

O. Rindlisbacher 1937

mf.

Trio-

DC. 1st Part. p.

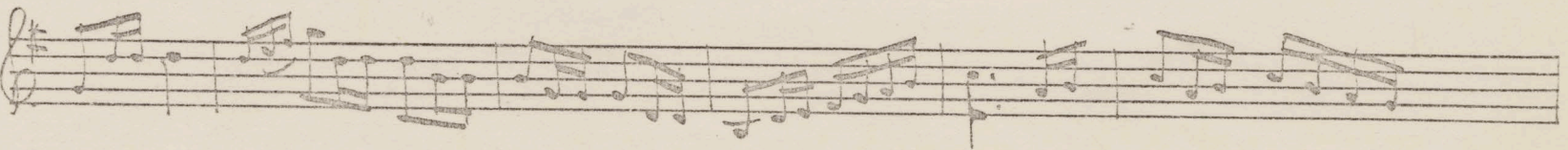
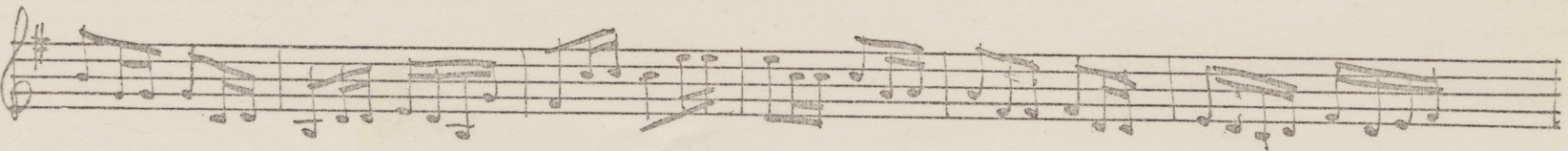
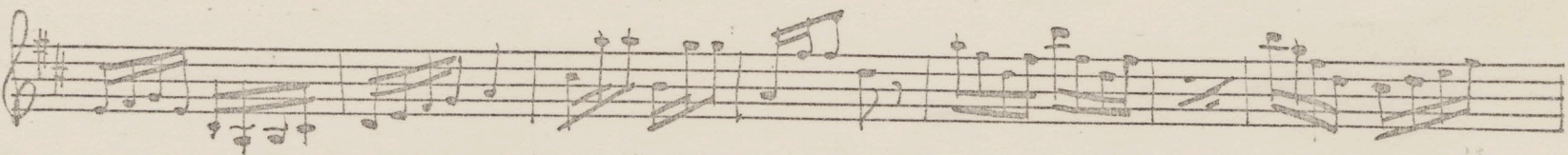
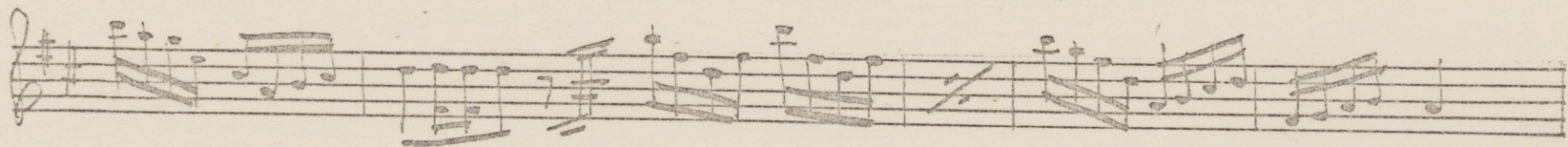
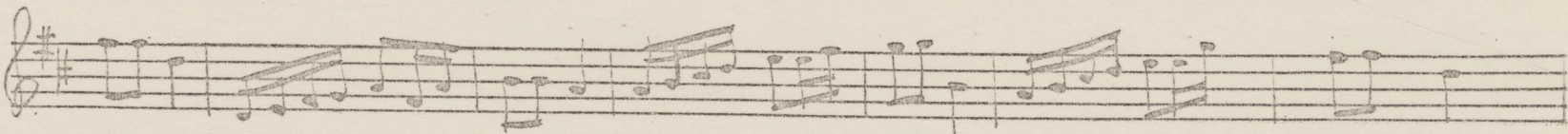
The first part of the polka is written on four staves. The first staff begins with a treble clef, a 2/4 time signature, and a mezzo-forte (mf.) dynamic marking. The music consists of eighth and sixteenth notes. The second staff continues the melody. The third staff features a treble clef with a key signature of one sharp (F#) and a piano (p.) dynamic marking, with the word "Trio-" written above it. The fourth staff continues the piece in a bass clef with a key signature of one flat (Bb).

Burnett's Hornpipe.

The second part of the manuscript, "Burnett's Hornpipe," is written on three staves. The first staff begins with a treble clef, a 2/4 time signature, and a key signature of one flat (Bb). It includes a triplet of eighth notes. The second and third staves continue the melody in a bass clef with a key signature of one flat (Bb).

Polka

O. Rindlisbacher 1937



Waltz Henry Burnett.

Handwritten musical notation for 'Waltz Henry Burnett'. The piece is written on five staves in treble clef. The key signature is one sharp (F#), and the time signature is 3/4. The notation includes various rhythmic values such as eighth and sixteenth notes, as well as rests and accidentals. The music is arranged in a single system across five staves.

The Frisky Maiden. Hornpipe.

Handwritten musical notation for 'The Frisky Maiden. Hornpipe'. The piece is written on three staves in treble clef. The key signature is one sharp (F#), and the time signature is 3/4. The notation features complex rhythmic patterns, including triplets and sixteenth-note runs, characteristic of a hornpipe. The music is arranged in a single system across three staves.

Polka

O. Rindlisbacher 1937

Handwritten musical notation on a single staff, treble clef, 4/4 time signature, starting with 'mf'. The notation consists of a series of eighth and sixteenth notes, some beamed together, with stems pointing upwards.

Handwritten musical notation on a single staff, treble clef, continuing the melody with various note values and rests.

Handwritten musical notation on a single staff, treble clef, featuring a fermata over a note in the middle of the staff.

Handwritten musical notation on a single staff, treble clef, with a key signature change to one flat (B-flat). The notation continues with eighth and sixteenth notes.

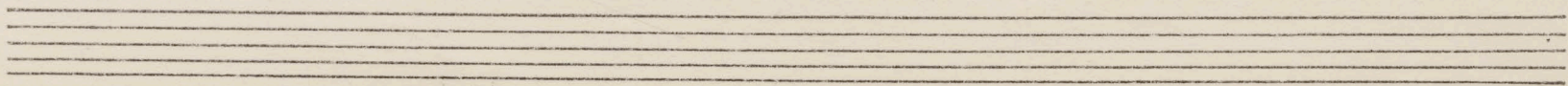
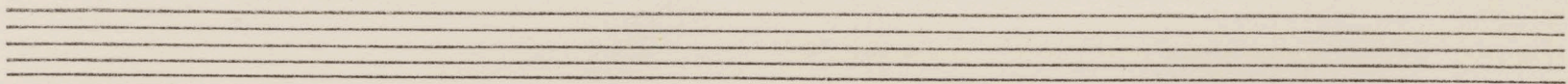
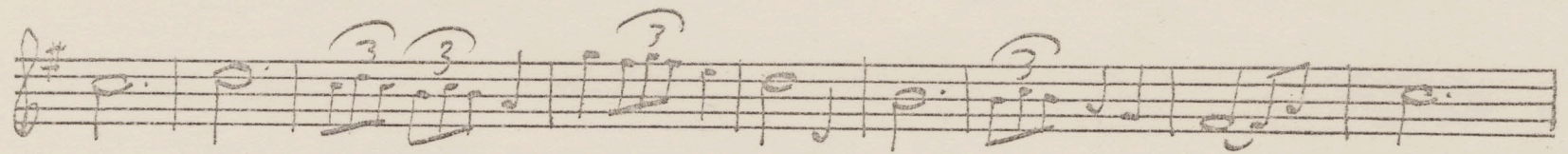
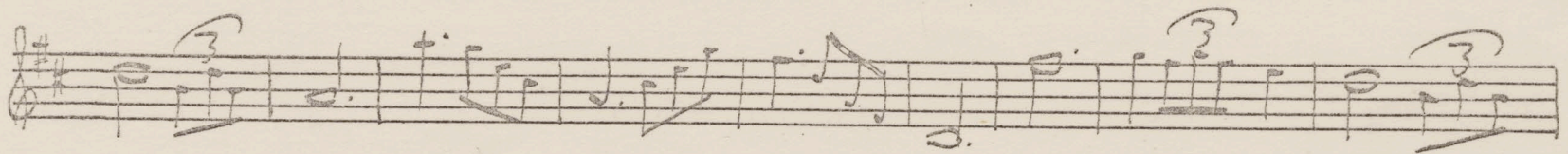
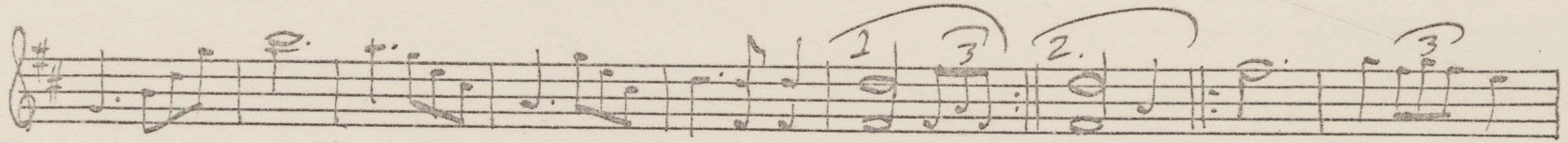
Handwritten musical notation on a single staff, treble clef, marked 'Trio' and 'D.C. 1st Part. p'. The notation begins with a double bar line and a repeat sign.

Handwritten musical notation on a single staff, treble clef, continuing the Trio section with eighth and sixteenth notes.

Handwritten musical notation on a single staff, treble clef, concluding the Trio section with a final cadence.

Four empty musical staves at the bottom of the page, consisting of five-line staves without any notation.

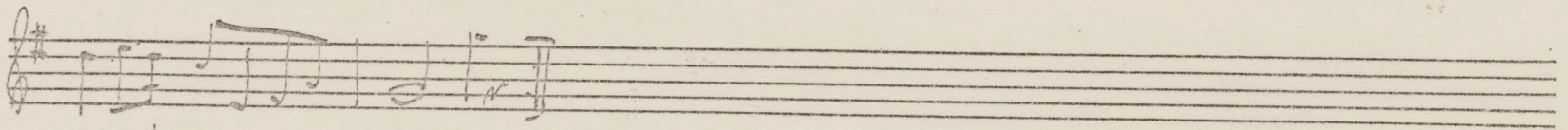
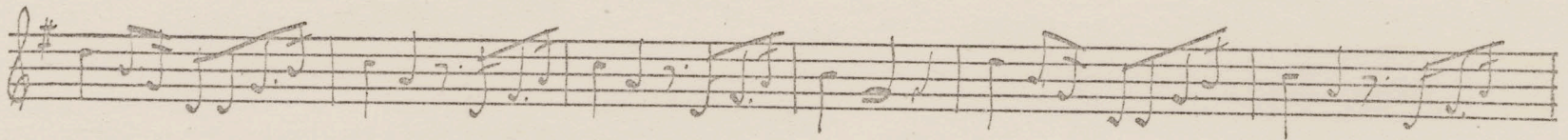
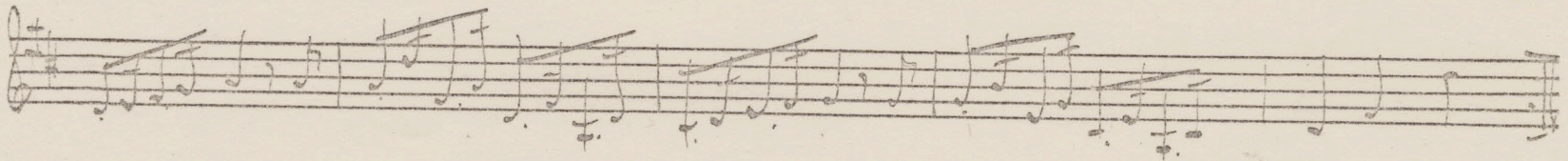
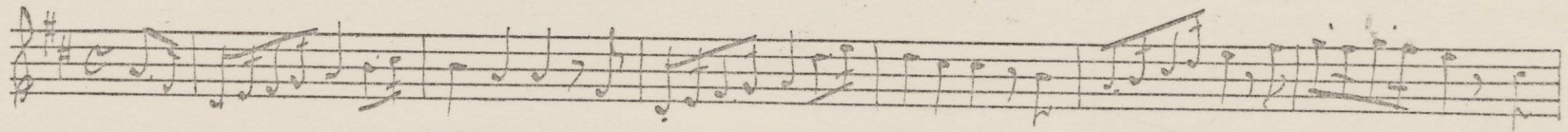
Livret i Finnskogarna OR# 25'



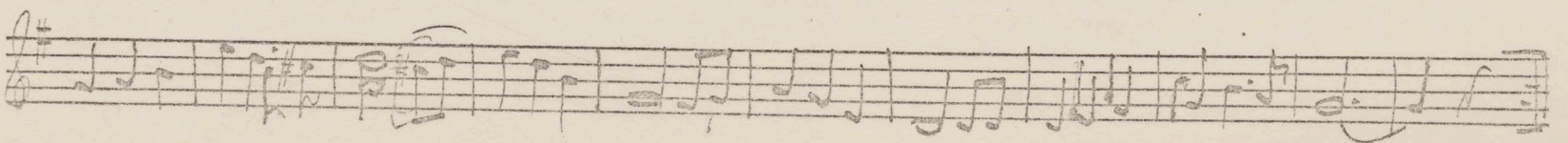
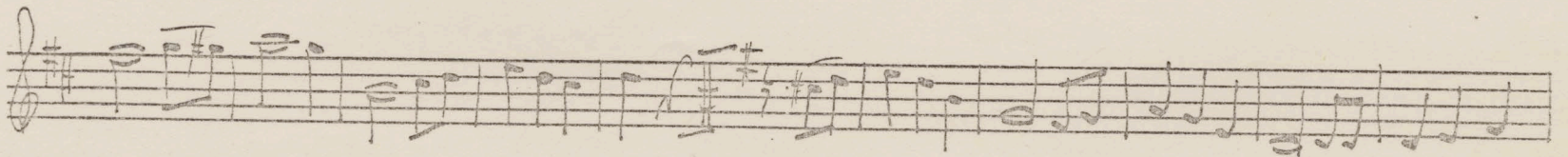
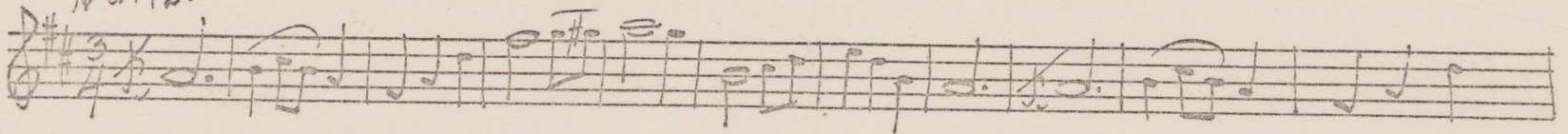
Schottische.

Bal i Hallingdal

O.R.#1



Waltz.



Schottische

Ut på Landsvägen

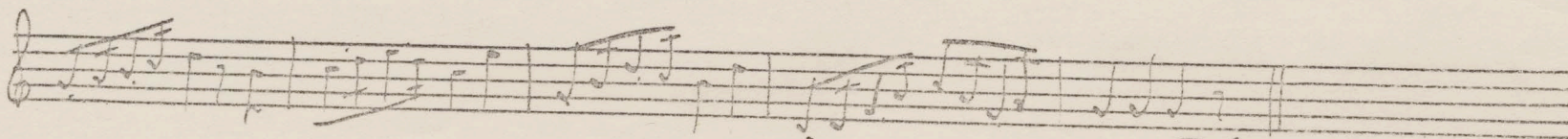
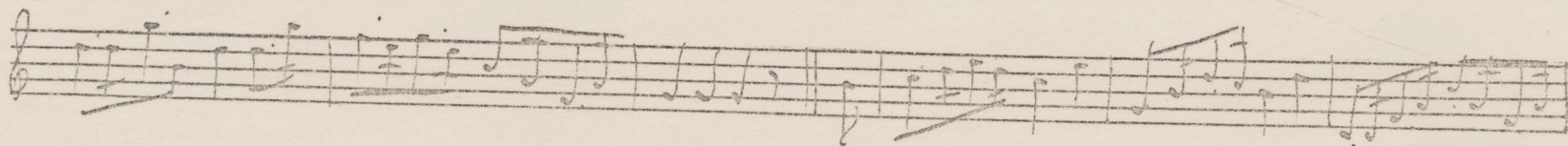
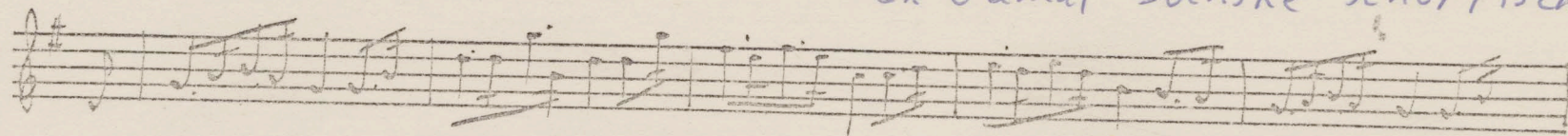
Handwritten musical notation for the Schottische 'Ut på Landsvägen'. The piece is in common time (C) and G major. It consists of four staves of music. The first staff begins with a treble clef, a common time signature, and a key signature of one sharp (F#). The notation includes various rhythmic values such as eighth and sixteenth notes, often beamed together, and rests. The second and third staves continue the melody and accompaniment. The fourth staff concludes the piece with a double bar line and the initials 'D.C.' written below it.

Reel Played by Burnett.

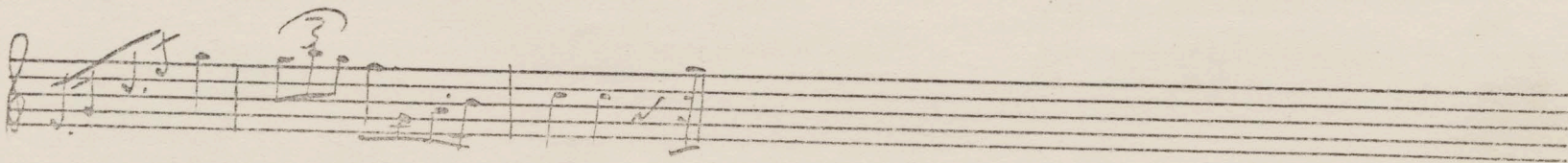
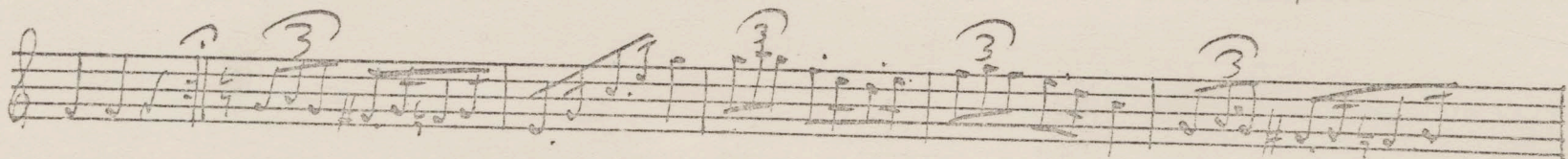
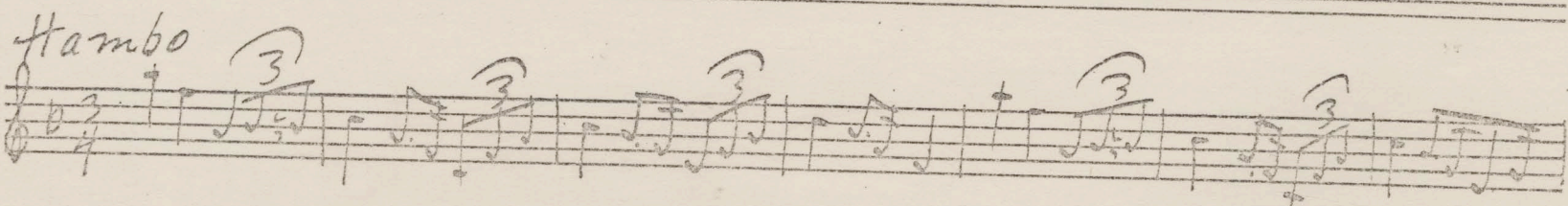
Handwritten musical notation for the Reel 'Played by Burnett'. The piece is in 2/4 time and G major. It consists of three staves of music. The first staff begins with a treble clef, a 2/4 time signature, and a key signature of one sharp (F#). The notation is characterized by frequent sixteenth-note runs and eighth-note patterns. The second and third staves continue the melody and accompaniment, ending with a double bar line.

Schottische "Gamle Ole Mattis" (Larson Dissertation # 22b)
O.R.#84 "~~Hemlands Toner~~"

"En Gamal Svenske Schottische"



D.C.



SPRING-Dans

Smålands-Polskan " Mazurka

Handwritten musical notation for 'Smålands-Polskan' in 3/4 time, consisting of four staves of music. The notation includes treble clefs, a 3/4 time signature, and various musical symbols such as notes, rests, and bar lines.

Michigan Lumberjack. Little Willie.

Handwritten musical notation for 'Michigan Lumberjack' in 2/4 time, consisting of three staves of music. The notation includes treble clefs, a 2/4 time signature, and various musical symbols such as notes, rests, and bar lines.

Waltz. Just Now.

Op. 1938.

Handwritten musical score for 'Waltz. Just Now.' in 3/4 time. The score consists of four staves of music. The first staff begins with a treble clef and a key signature of one sharp (F#). The music features a mix of eighth and sixteenth notes, with some measures containing beamed sixteenth notes. There are several measures with rests and some measures with accidentals (sharps and naturals). The piece concludes with a double bar line.

Judd Livingson. D.A. Butnett.

Handwritten musical score for 'Judd Livingson. D.A. Butnett.' in 6/8 time. The score consists of three staves of music. The first staff begins with a treble clef and a key signature of two sharps (F# and C#). The music features a mix of eighth and sixteenth notes, with some measures containing beamed sixteenth notes. There are several measures with rests and some measures with accidentals (sharps and naturals). The piece concludes with a double bar line.

Oct 29 '63
The day I lost my E -

Schottische. D.A.B.

Handwritten musical score for 'Schottische' in treble and bass clefs. The key signature is two sharps (F# and C#) and the time signature is common time (C). The score consists of three staves. The first staff is in treble clef, the second in bass clef, and the third in treble clef. The music features a mix of eighth and sixteenth notes, with some chords and rests. There are some handwritten annotations above the second staff, including the numbers '2', '3', '2', '1', '2', and 'ip', and some sharp symbols.

Georgia Reel.

Handwritten musical score for 'Georgia Reel' in treble clef. The key signature is one flat (Bb) and the time signature is 2/4. The score consists of three staves. The music is characterized by a fast, rhythmic pattern of eighth and sixteenth notes, typical of a reel. There are some handwritten annotations below the first staff, including a comma and a small number '3'.

Pig Schottische O.R.# 55

Back of Bridge on Tailpiece

Pig Squel. Grant.
D.C.

New.

New York Boys Reel

Burnette

Reel

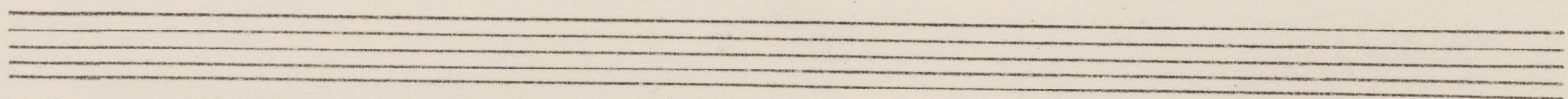
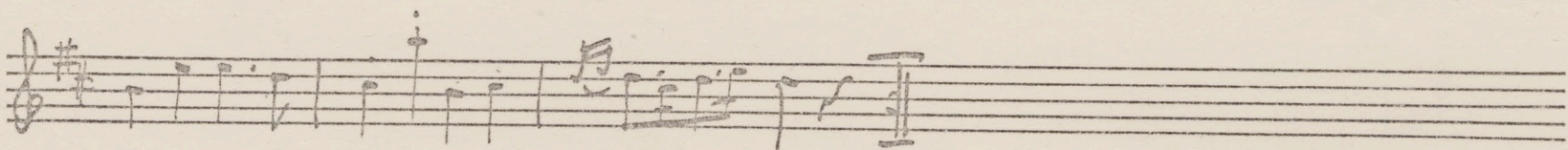
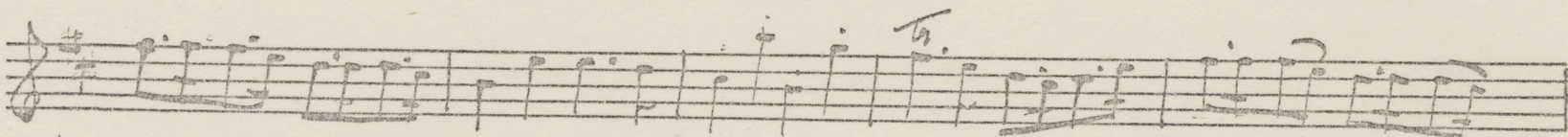
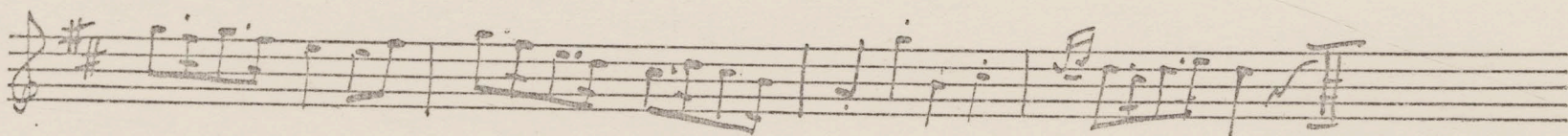
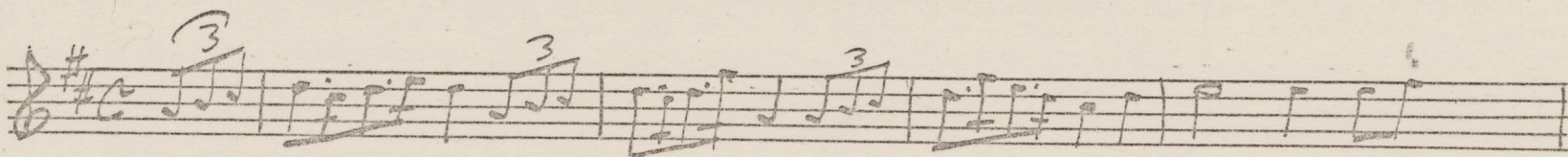
Lars

Handwritten musical notation for the first section of 'Burnette Reel'. It consists of three staves of music in treble clef, 2/4 time signature. The melody is written in a single line across the three staves, with various note values and rests. There are some markings above the notes, possibly indicating fingerings or ornaments.

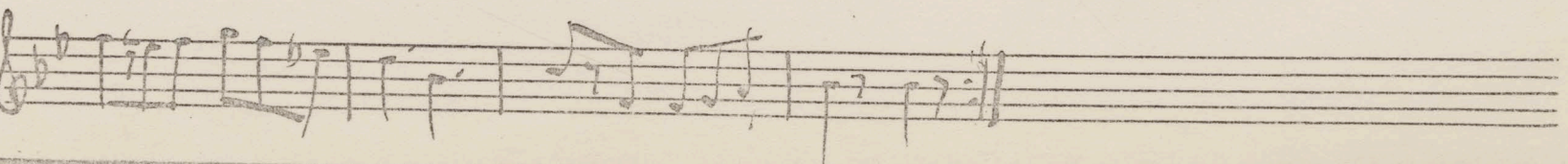
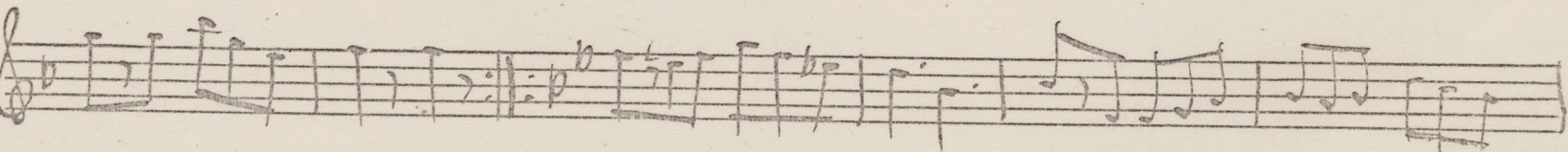
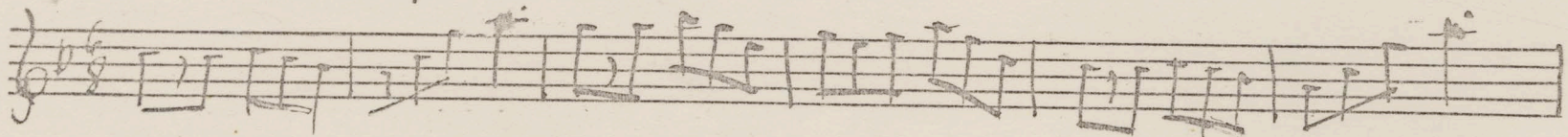
Burnette Hornpipe

Handwritten musical notation for the second section of 'Burnette Hornpipe'. It consists of three staves of music in treble clef, 2/4 time signature. The melody is written in a single line across the three staves, with various note values and rests. There are some markings above the notes, possibly indicating fingerings or ornaments.

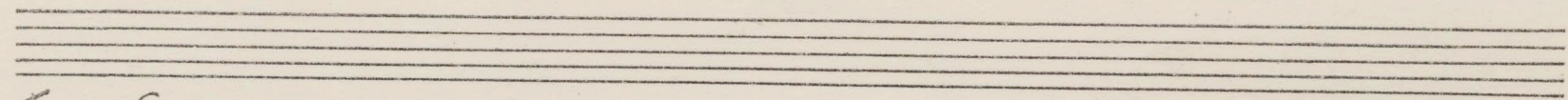
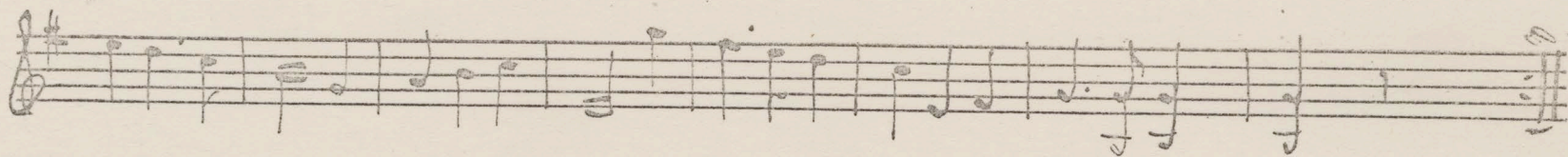
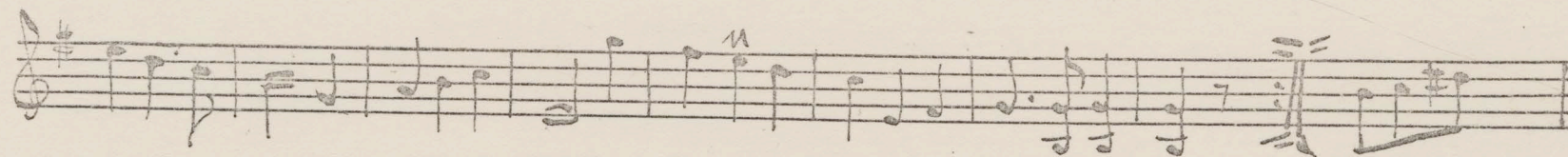
Lars Fykrud Schottisch O.R.#26 ~~()~~ ~~()~~



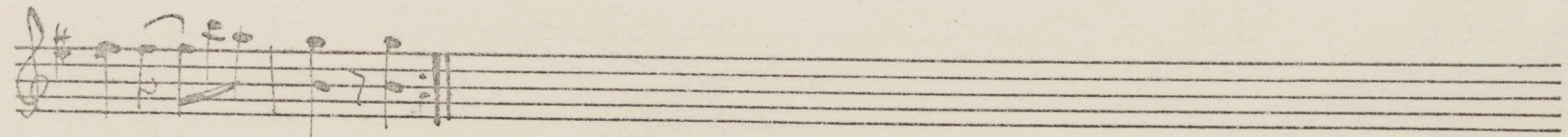
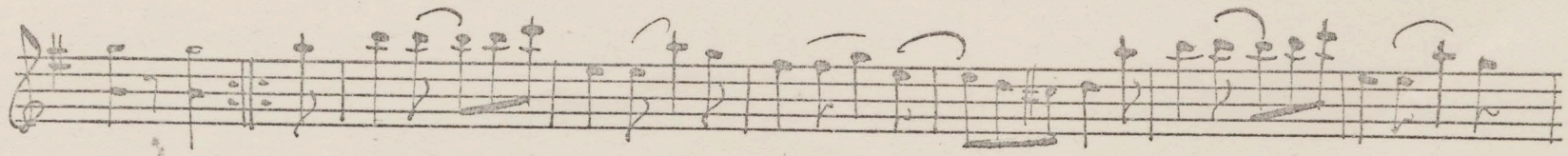
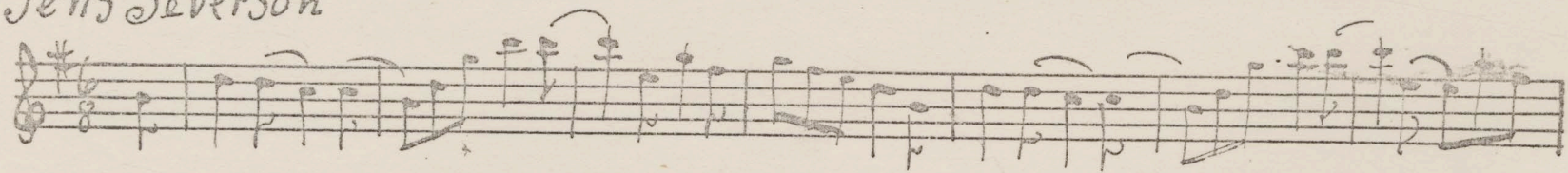
Square Dance, Baranek



Wilda Waltz



Tens Severson



Au

little

August Bröten

Handwritten musical notation for 'August Bröten'. The piece is written on two staves in treble clef with a key signature of one sharp (F#) and a 3/4 time signature. The melody is characterized by eighth and sixteenth notes, often beamed together. There are two trill ornaments marked above the notes in the first and second measures of the second staff.

"Little Willie" Secore.

Handwritten musical notation for "Little Willie" Secore. The piece is written on four staves in treble clef with a key signature of one sharp (F#) and a 3/4 time signature. The melody is written across the first three staves, featuring a mix of eighth and sixteenth notes with various phrasing slurs. The fourth staff contains a bass line with a similar rhythmic pattern. The piece concludes with a double bar line and repeat dots.

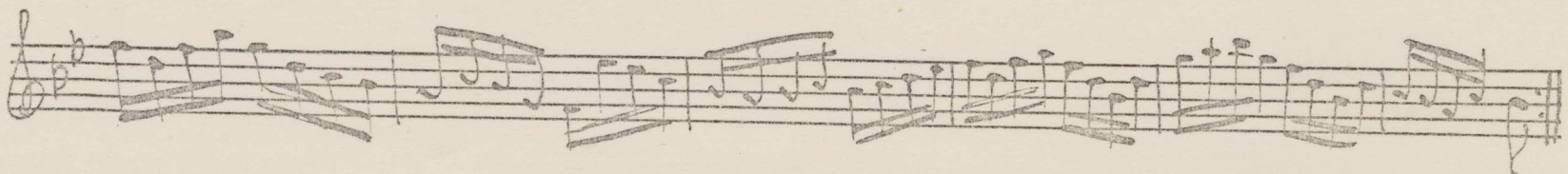
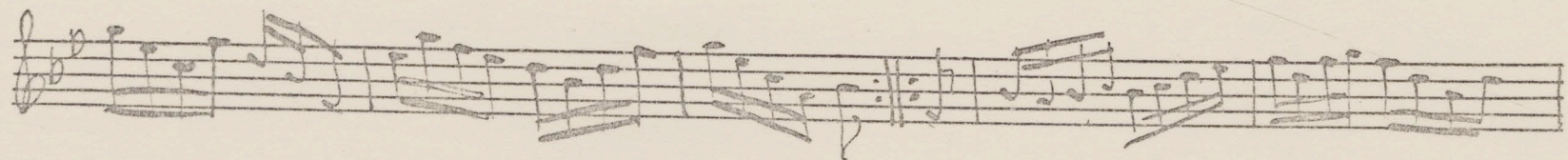
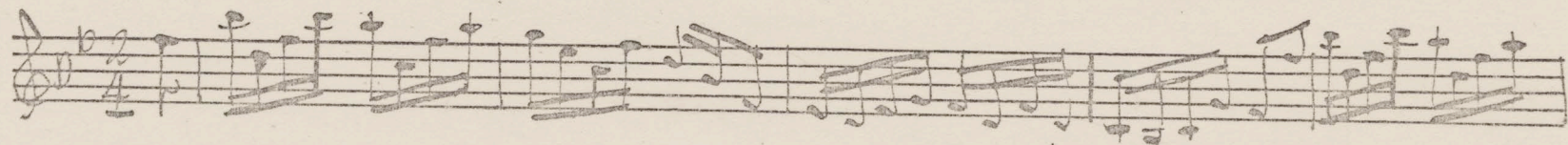
OR. 1940

Handwritten musical notation for OR. 1940, measures 1-4. The music is written on a single staff in treble clef, with a key signature of two sharps (F# and C#) and a time signature of 2/4. The notation includes eighth and sixteenth notes, rests, and a double bar line at the end of the fourth measure.

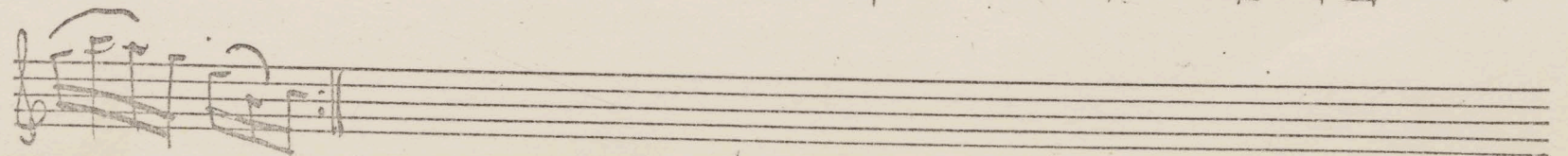
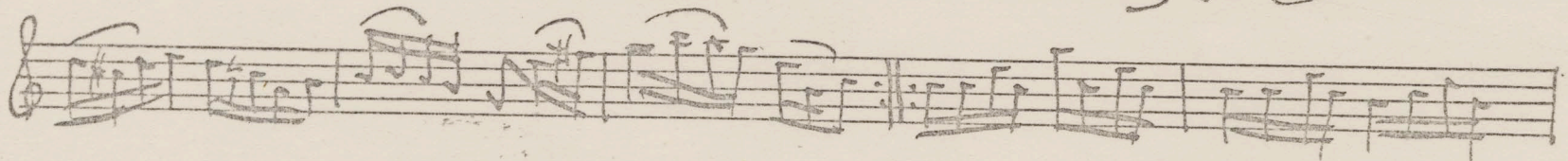
OR 1940

Handwritten musical notation for OR 1940, measures 5-7. The music is written on a single staff in treble clef, with a key signature of one flat (Bb) and a time signature of 2/4. The notation includes eighth and sixteenth notes, rests, and a double bar line at the end of the seventh measure.

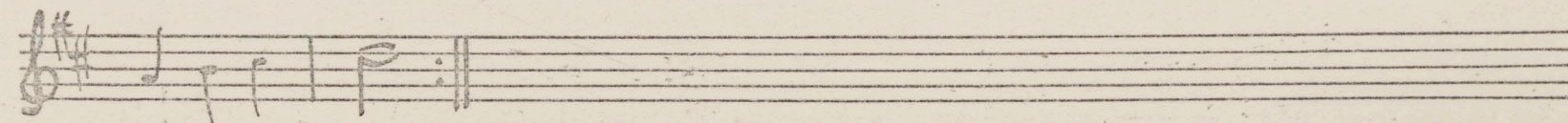
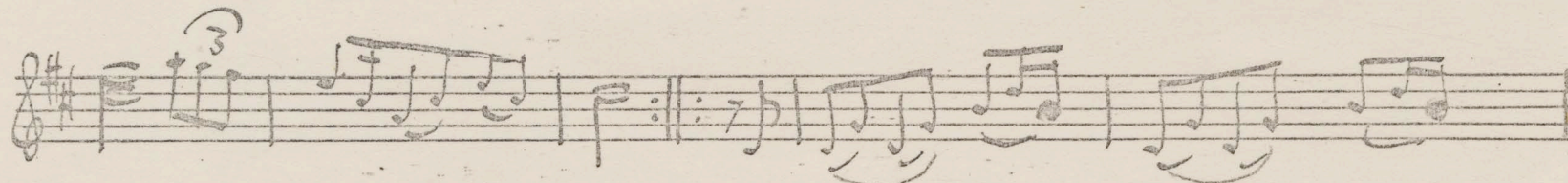
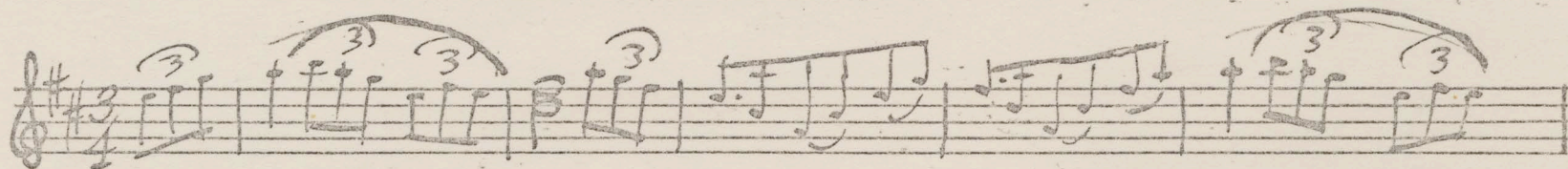
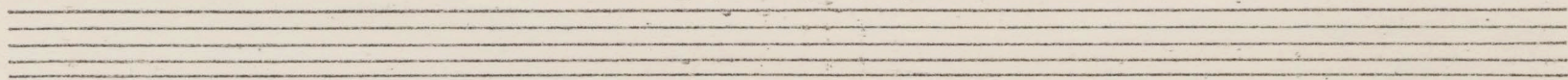
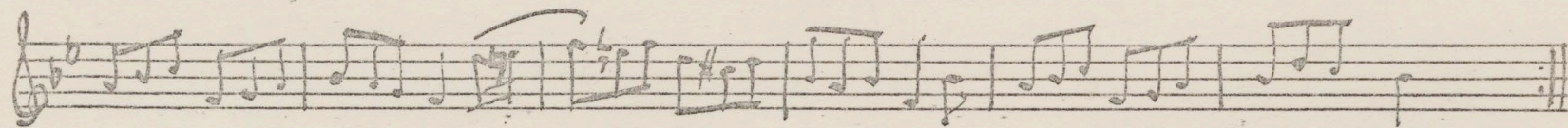
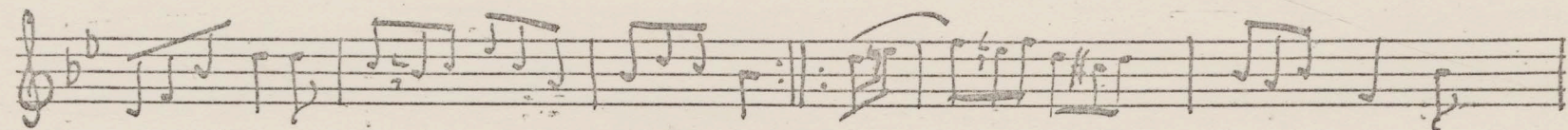
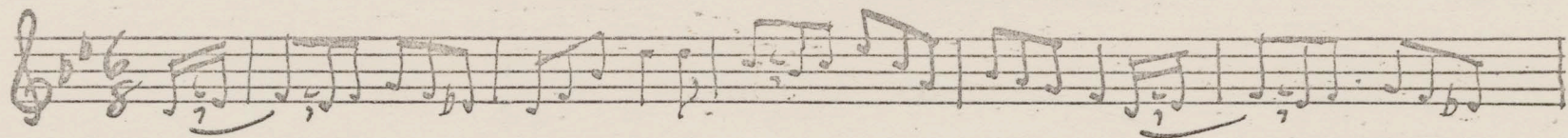
Henry Burnett.



W. W. Waite



Sand Cliff Jig. by O.R. (From Art Hager's Red Cliff Jig.)



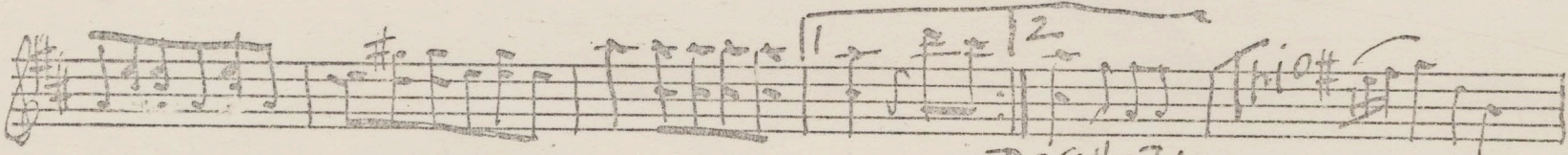
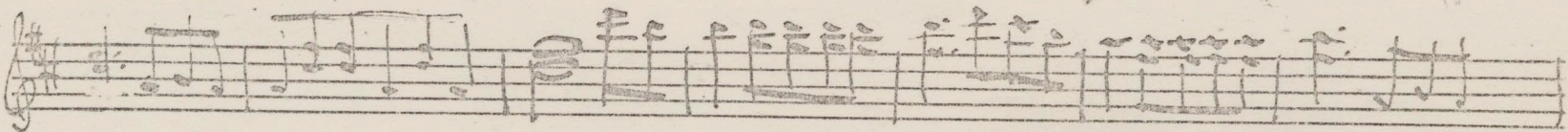
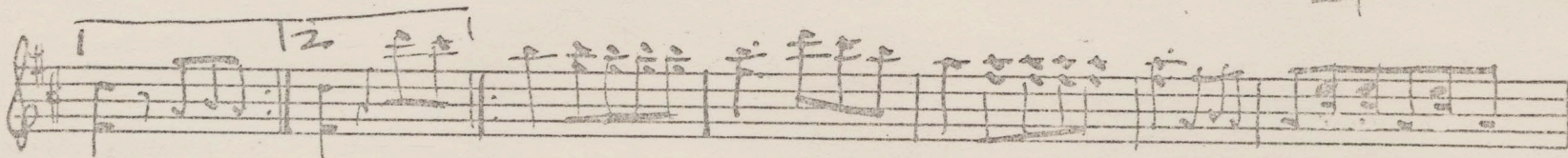
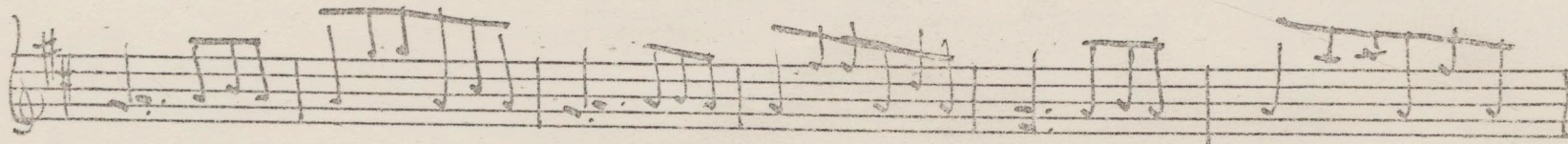
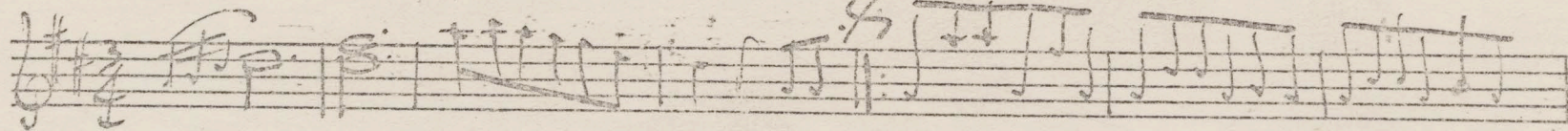
Laendler

O.R.

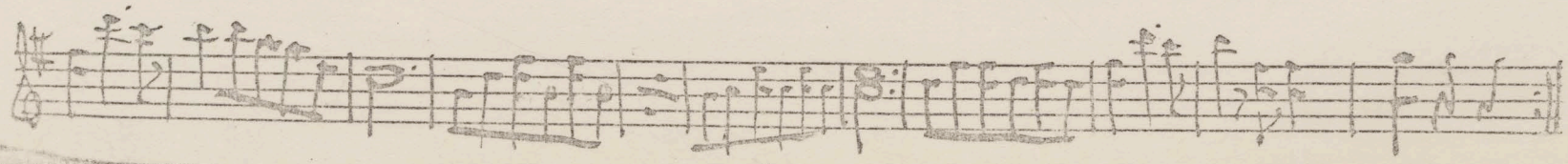
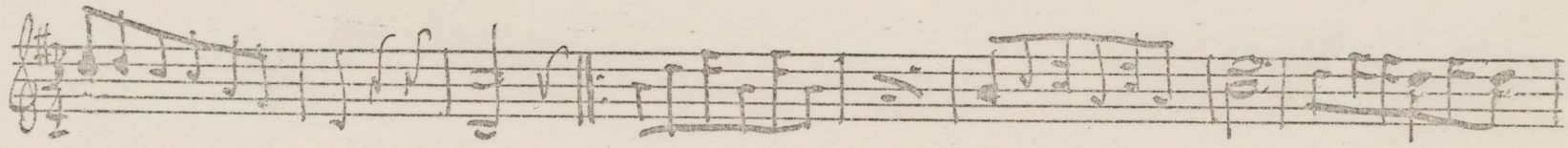
I recorded this with Al Spurecheck band in
late 1960s - 45 rpm - "Laendler ~~no. 3~~"

#3

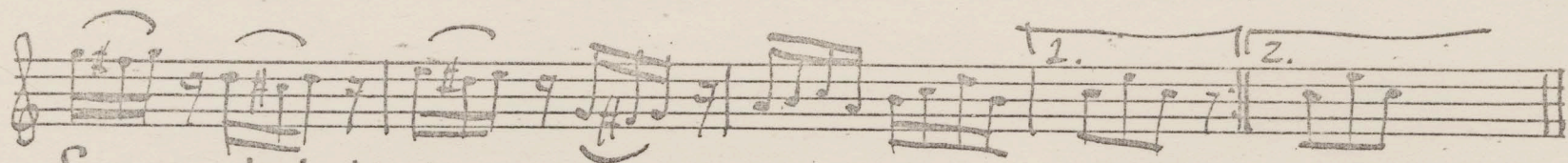
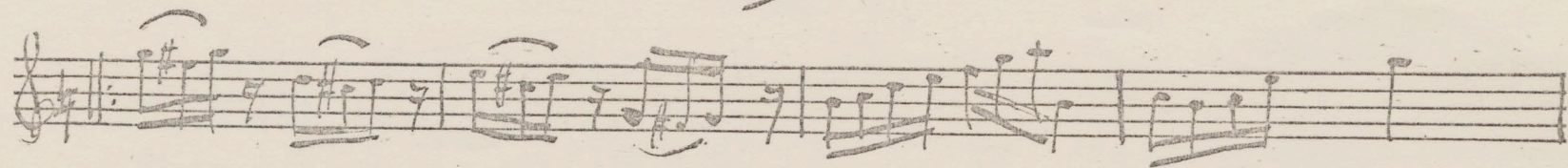
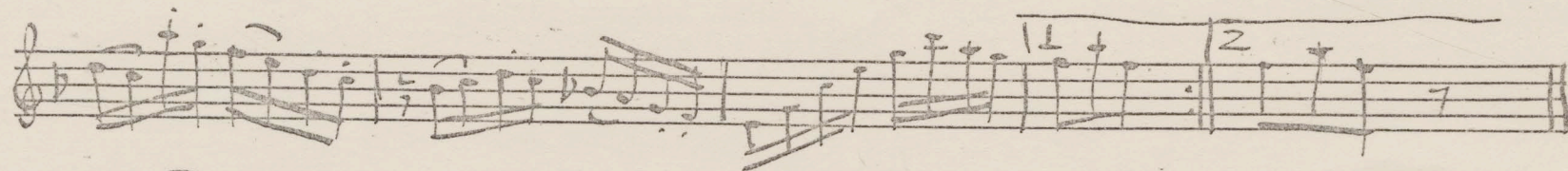
L.L.



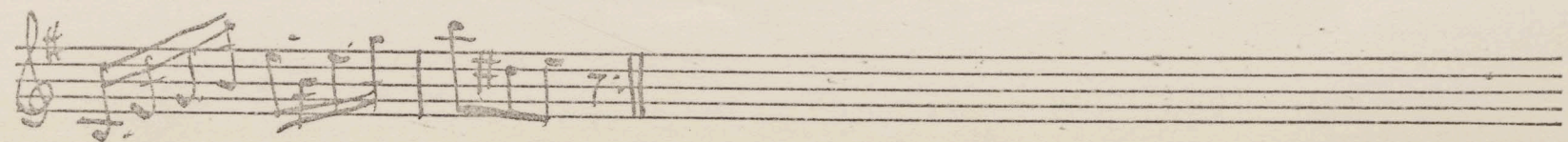
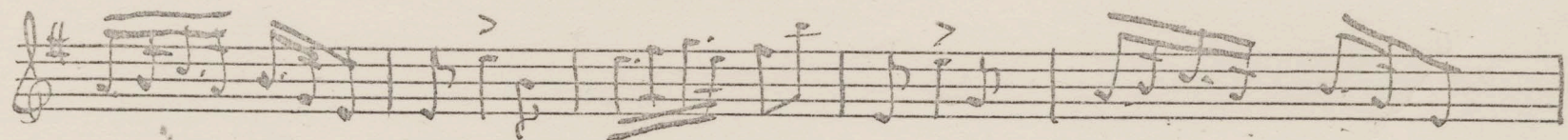
D.S. al Fine



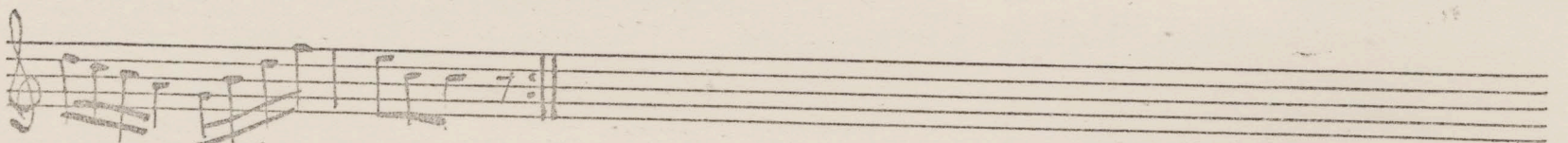
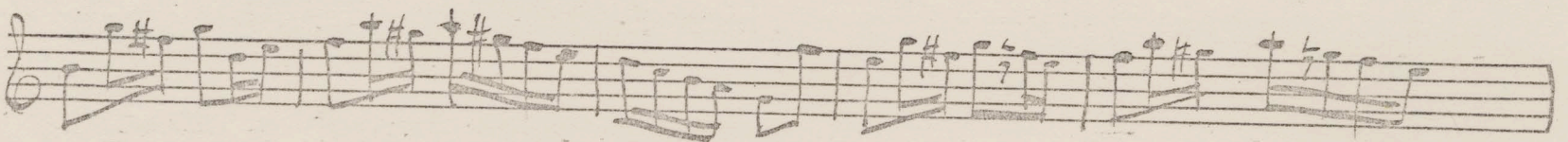
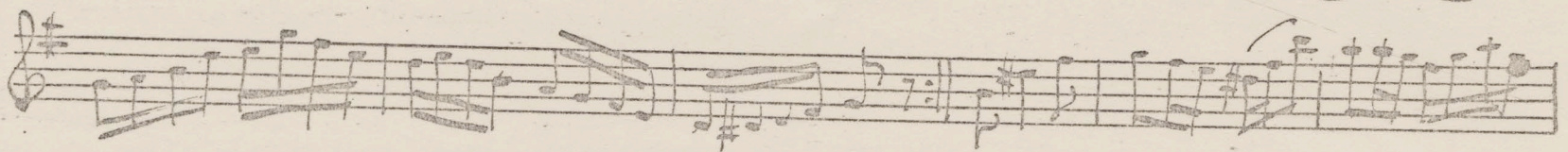
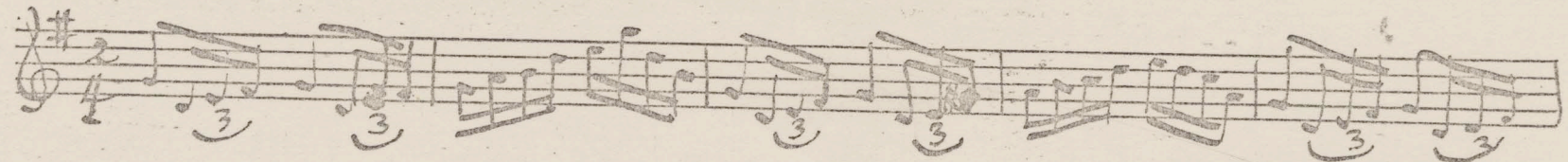
Down & Out. Hornpipe



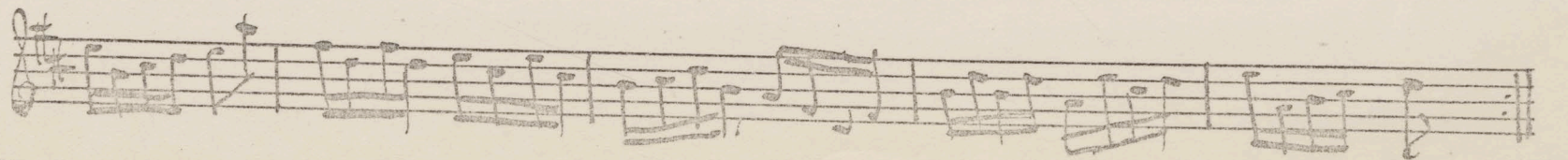
Serenader's jig.



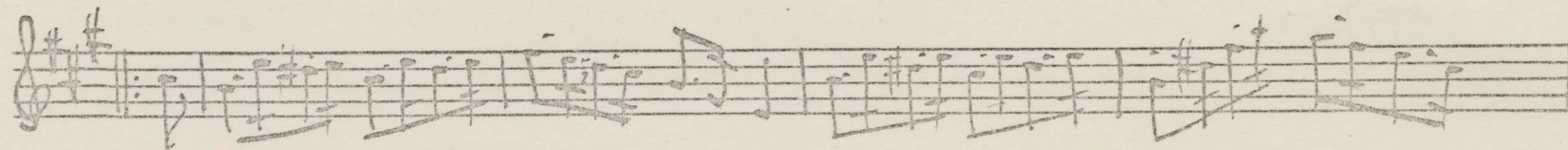
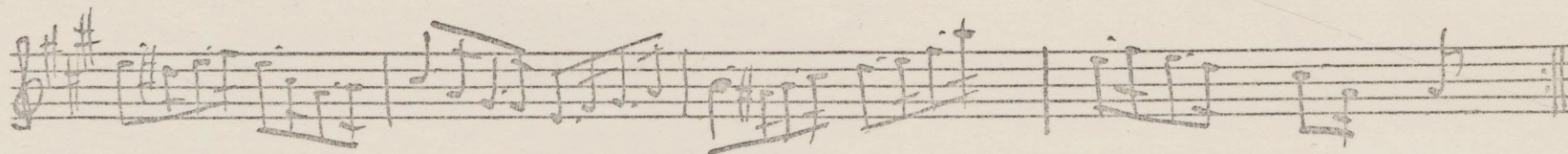
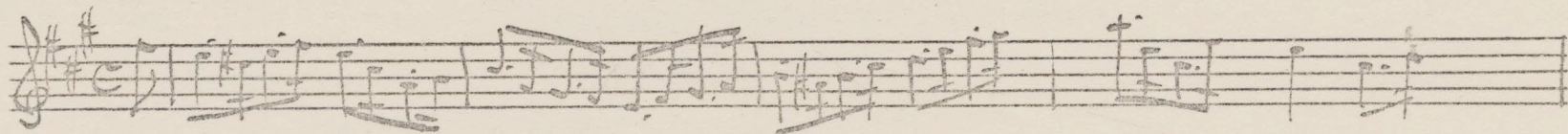
Buck Dance



Whiskey Hotpipe.



Pearls & Fairies. Highland Fling.



Rivals Hornpipe.

