



LIBRARIES

UNIVERSITY OF WISCONSIN-MADISON

Wood type : printers' equipment and supplies.

New York, N.Y. (270 Lafayette Street) ; Chicago ; San Francisco:
American Wood Type Manufacturing Co., 1939

<https://digital.library.wisc.edu/1711.dl/TO5TRWUUYX4FJ86>

<http://rightsstatements.org/vocab/UND/1.0/>

The libraries provide public access to a wide range of material, including online exhibits, digitized collections, archival finding aids, our catalog, online articles, and a growing range of materials in many media.

When possible, we provide rights information in catalog records, finding aids, and other metadata that accompanies collections or items. However, it is always the user's obligation to evaluate copyright and rights issues in light of their own use.

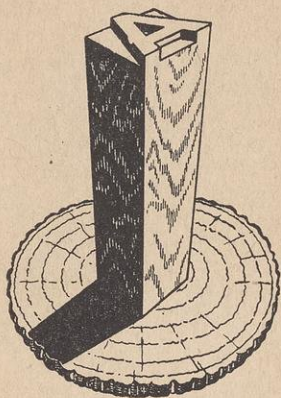
WOOD TYPE

PRINTERS'
EQUIPMENT
AND
SUPPLIES

AMERICAN WOOD TYPE
MANUFACTURING CO.

276 LAFAYETTE STREET
NEW YORK CITY . . . NEW YORK
CANAL 5-2310-2311

WOOD TYPE



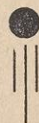
PRINTING EQUIPMENT AND SUPPLIES

A showing of wood type in standard
Gothics and distinctive modern faces.

A complete line of quality machinery,
equipment and supplies for composing
room, press room and bindery.

Orders are shipped promptly—gener-
ally from stock. Mail and wire orders
solicited. All merchandise is guaranteed.

CATALOG No. 39



AMERICAN
WOOD TYPE
MANUFACTURING CO.

270 LAFAYETTE STREET
NEW YORK, N. Y.

CHICAGO

SAN FRANCISCO

INDEX

WOOD TYPE, RULE, TINT BLOCKS, ETC.

	PAGE		PAGE
Arabol Pastes	63	Thirty Line	29
Borders	31, 36, 37	Thirty-six Line	30
Broadstroke Script	25	Modern Script (like Trafton)	23
Calendar Sets	22	Mode Series (like Futura)	10
Caslon	17	Old English	21
Cheltenham Series	8, 9	Outline Type	21
Diamonds	33, 34	Ovals	33
Engraving Blocks	37	Pyramids	34
Flash Script (like Signal)	24	Rex (like Karnak)	15
Gothics		Rugged (like Neuland)	14
Condensed	5, 6	Rugged Inline	14
Extra Condensed	4	Squares	32
Franklin	18	Stars	32
Italic	18	Stock Cuts	22
Regular	6, 7	Tint Blocks	36, 37
Wide	8, 9	Triangles	34
Goudy Bold	21	Ultra Bodoni	16
Hebrew	20	Ultra Bodoni Condensed	16
Kabel	13	Varnishing Plates	36, 37
Large Type		Wood Rule	36, 37
Fifteen Line	26	Wood Type Price List	3
Twenty Line	27, 28	Wood Type Font Schemes	3
Twenty-four Line	27, 28		

PRINTING MACHINERY, FURNITURE, EQUIPMENT AND SUPPLIES

	PAGE		PAGE
Ad Assembly Cabinets	54	Oil Cans	61
Band Saws	44	Oily Waste Cans	62
Bellows	62	Paper Cutters	40, 42
Benzene Brushes	62	Paper Drills	40
Benzene Cans	62	Paper Punches	42, 48
Chase Racks	56	Perforators	48, 58
Composing Sticks	45	Planers	62
Cut Mounting Cement	64	Power Miterers	44
Cut Storage Cabinets	53	Press Counters	61
Cutting Sticks	39	Press Numbering Machines	63
Engraving Tools	64	Press Tape	39
Finishing Rubbers	64	Printers Saws	44, 47, 58
Furniture	38, 39	Proof Presses	41, 43
Galleys	55	Proof Readers Desks	54
Galley Cabinets	55	Quoins	41, 63
Galley Locks	42	Quoin Keys	41
Gauge Pins	62	Register Quoins	63
Hand Numbering Machines	63	Reglet	38, 39
High Speed Quoins	42	Round Cornering Machines	40
Imposing Tables	52	Routers	41, 58
Ink Knives	61	Router Bits	62
Ink and Roller Cabinets	53	Saw Blades	61
Iron Furniture	42	Slug Clippers	45
Iron Imposing Tops	56	Staplers	60
Jig Saws	59	Steel Chases	61
Lead Cutters	45	Steel Tape Rules	60
Line Gauges	45	Steel Type Gauges	60
Magnetic Plate Mounters	64	Stereotype Equipment	46
Makeready Knives	59, 63	Tweezers	63
Make-up Rules	45	Type Cabinets	50, 51
Make-up Tables	49, 52	Type Cases	57
Mailing Machines	61	Type High Gauges	41, 61
Mallets	62	Type High Machines	42
Micrometers	63	Xacto Knives	59
Mitering Machines	45		

WOOD TYPE PRICE LIST

(Subject to change without notice)

• Prices listed are in cents per character (when ordered in fonts).

• SORTS PRICES

• In quantities of less than 26 characters (of one size and style), add 50% to price per character as listed in price list.

• In quantities of more than 26 but less than 65 characters (of one size and style), add 10% to font price per character as listed above.

• In quantities of more than 65 characters (of one size and style), regular font prices per character, as listed in price list, apply.

Lines or Picas	Class L	Class M	Class N	Class O	Class P	Class Q	Class R	Class S
3				\$0.06	\$0.06	\$0.06	\$0.08	\$0.12
4	.06	.06	.06	.06	.07	.07	.08	.12
5	.07	.07	.07	.07	.08	.09	.10	.15
6	.07	.07	.07	.07	.09	.11	.12	.17
8	.09	.09	.09	.09	.11	.13	.14	.19
10	.11	.11	.11	.11	.13	.16	.17	.21
12	.13	.13	.14	.14	.16	.19	.20	.25
15	.15	.16	.17	.17	.20	.23	.26	.30
18	.18	.19	.20	.20	.23	.26	.30	.35
20	.20	.21	.22	.22	.26	.30	.34	.39
24	.24	.25	.26	.26	.30	.34	.38	.44
25	.25	.26	.27	.27	.32	.36	.40	.47
30	.30	.31	.32	.32	.37	.42	.46	.54
36	.36	.38	.39	.39	.44	.49	.53	.59
40	.40	.42	.43	.43	.48	.53	.59	.63
45	.50	.51	.52	.53	.58	.67	.73	.74
50	.60	.61	.62	.63	.68	.77	.83	.84
60	.70	.71	.71	.71	.78	.88	.90	.93
72	.88	.88	.88	.88	.95	1.05	1.08	1.10
80	.98	.98	.98	.98	1.03	1.13	1.17	1.20
100	1.20	1.20	1.20	1.20	1.30	1.33	1.36	1.40

QUANTITY DISCOUNTS

\$50 to \$99	4%
\$100 to \$199	6%
\$200 to \$499	8%
\$500 and over	10%

WOOD TYPE FONT SCHEMES

(Showing quantity of each character in each font)

• Cap Font Schemes and Lower Case Font Schemes are identical with this exception: Cap Fonts contain punctuation while Lower Case Fonts contain no punctuation.

• In ordering be sure to specify whether Cap Fonts, Lower Case Fonts or Figure Fonts are desired.

FIGURE FONT SCHEMES

• Figure Fonts are sold separately and should be designated when desired.

CAP - L.C.	3A-75 3a-60	4A-106 4a-86	5A-120 5a-100	7A-165 7a-134	9A-200 9a-164	12A-270 12a-220	15A-320 15a-261	20A-435 20a-357	30A-625 30a-511
A	a	3	4	5	7	9	12	15	20
B	b	2	3	3	4	5	7	8	10
C	c	2	3	4	5	6	9	10	14
D	d	2	3	4	5	6	8	9	12
E	e	4	5	6	9	11	15	20	26
F	f	2	3	3	4	5	7	8	11
G	g	2	3	3	4	5	7	8	10
H	h	2	3	4	5	6	8	9	12
I	i	4	4	5	7	9	13	15	22
J	j	2	3	3	4	4	5	6	8
K	k	1	2	2	3	4	5	5	8
L	l	3	5	6	7	7	9	11	15
M	m	2	3	4	5	6	8	10	13
N	n	3	4	5	7	9	13	16	22
O	o	3	4	5	7	9	13	16	22
P	p	2	3	3	4	5	8	9	12
Q	q	1	2	2	2	3	4	4	6
R	r	3	4	5	7	10	13	16	22
S	s	4	5	6	8	10	13	16	22
T	t	3	4	5	8	10	13	16	22
U	u	2	3	4	6	6	8	9	12
V	v	2	3	3	4	4	5	6	8
W	w	2	3	3	4	5	6	7	9
X	x	1	2	2	2	3	3	3	5
Y	y	2	3	3	4	5	5	6	9
Z	z	1	2	2	2	2	3	3	5
&		1	2	2	2	2	3	3	5
.		3	4	4	7	9	12	15	20
..		3	4	4	7	9	12	15	20
...		1	1	1	3	3	4	5	6
:		1	2	2	3	4	6	7	9
;		1	2	2	2	2	3	3	4
!		2	3	3	3	3	4	5	6
?		1	1	1	2	2	3	3	4

	No. 1 Font 26 Char.	No. 2 Font 40 Char.	No. 3 Font 65 Char.	No. 4 Font 90 Char.
--	------------------------------	------------------------------	------------------------------	------------------------------

Fig. 1	4	6	9	12
Fig. 2	3	4	7	9
Fig. 3	2	3	6	8
Fig. 4	2	3	5	7
Fig. 5	2	4	6	9
Fig. 6	2	3	5	7
Fig. 7	2	3	5	7
Fig. 8	2	3	5	7
Fig. 9	2	3	5	7
Fig. 0	4	6	9	14
\$	1	2	3	3

AMERICAN WOOD TYPE MFG. CO. New York • Chicago • San Francisco

GOTHIC No. 500 (Class L)

Wood type may be purchased in sorts or
fonts up to 100 line.

6 Line GOTHIC No. 500
7c per char. in fonts; 11c per char. in sorts
3A Cap \$5.25; 4A \$7.42; Fig. Font \$1.82

BCDEFGHIJK3

8 Line GOTHIC No. 500
9c per char. in fonts; 14c per char. in sorts
3A Cap \$6.75; 4A \$9.54; Fig. Font \$2.34

BCDEFGH3

10 Line GOTHIC No. 500
11c per char. in fonts; 17c per char. in sorts
3A Cap \$8.25; 4A \$11.66; Fig. Font \$2.86

BCDEFG3

12 Line GOTHIC No. 500
13c per char. in fonts; 20c per char. in sorts
3A Cap \$9.75; 4A \$13.78; Fig. Font \$3.38

BCDEF3

GOTHIC No. 510 (Class L)

Most wood type orders are shipped from
stock the same day received.

6 Line GOTHIC No. 510
7c per char. in fonts; 11c per char. in sorts
3A Cap \$5.25; 4A \$7.42; Fig. Font \$1.82

BCDEFGH3

8 Line GOTHIC No. 510
9c per char. in fonts; 14c per char. in sorts
3A Cap \$6.75; 4A \$9.54; Fig. Font \$2.34

BCDEF3

10 Line GOTHIC No. 510
11c per char. in fonts; 17c per char. in sorts
3A Cap \$8.25; 4A \$11.66; Fig. Font \$2.86

BCDE3

12 Line GOTHIC No. 510
13c per char. in fonts; 20c per char. in sorts
3A Cap \$9.75; 4A \$13.78; Fig. Font \$3.38

BCD3

GOTHIC No. 540 (Class L)

Mail orders are shipped promptly and are
carefully checked.

6 Line GOTHIC No. 540

7c per char. in fonts; 11c per char. in sorts
3A Cap \$5.25; 4A \$7.42; Fig. Font \$1.82

BCDEFGH3

8 Line GOTHIC No. 540

9c per char. in fonts; 14c per char. in sorts
3A Cap \$6.75; 4A \$9.54; Fig. Font \$2.34

BCDEF3

10 Line GOTHIC No. 540

11c per char. in fonts; 17c per char. in sorts
3A Cap \$8.25; 4A \$11.66; Fig. Font \$2.86

BCD3

12 Line GOTHIC No. 540

13c per char. in fonts; 21c per char. in sorts
3A Cap \$9.75; 4A \$13.78; Fig. Font \$3.38

BCD3

GOTHIC No. 550 (Class L)

4 Line GOTHIC No. 550

6c per char. in fonts; 9c per char. in sorts
3A Cap \$4.50; 4A \$6.36; Fig. Font \$1.56

BCDEFGHIJ3

6 Line GOTHIC No. 550

7c per char. in fonts; 11c per char. in sorts
3A Cap \$5.25; 4A \$7.42; Fig. Font \$1.82

BCDEFG3

8 Line GOTHIC No. 550

9c per char. in fonts; 14c per char. in sorts
3A Cap \$6.75; 4A \$9.54; Fig. Font \$2.34

BCDE3

10 Line GOTHIC No. 550

11c per char. in fonts; 17c per char. in sorts
3A Cap \$8.25; 4A \$11.66; Fig. Font \$2.86

BCD3

12 Line GOTHIC No. 550

13c per char. in fonts; 21c per char. in sorts
3A Cap \$9.75; 4A \$13.78; Fig. Font \$3.38

BC3

GOTHIC No. 590 (Class M)

4 Line GOTHIC No. 590

6c per char. in fonts; 9c per char. in sorts
3A Cap \$4.50; 4A \$6.36; Fig. Font \$1.56

BCDEFGH3

6 Line GOTHIC No. 590

7c per char. in fonts; 11c per char. in sorts
3A Cap \$5.25; 4A \$7.42; Fig. Font \$1.82

BCDE3

8 Line GOTHIC No. 590

9c per char. in fonts; 14c per char. in sorts
3A Cap \$6.75; 4A \$9.54; Fig. Font \$2.34

BCD3

10 Line GOTHIC No. 590

11c per char. in fonts; 17c per char. in sorts
3A Cap \$8.25; 4A \$11.66; Fig. Font \$2.86

BC3

12 Line GOTHIC No. 590

13c per char. in fonts; 20c per char. in sorts
3A Cap \$9.75; 4A \$13.78; Fig. Font \$3.38

BC1

GOTHIC No. 6243 (Class M)

4 Line GOTHIC No. 6243

6c per char. in fonts; 9c per char. in sorts
3A Cap \$4.50; 4A \$6.36; Fig. Font \$1.56

BCDEFG3

6 Line GOTHIC No. 6243

7c per char. in fonts; 11c per char. in sorts
3A Cap \$5.25; 4A \$7.42; Fig. Font \$1.82

BCDE3

8 Line GOTHIC No. 6243

9c per char. in fonts; 14c per char. in sorts
3A Cap \$6.75; 4A \$9.54; Fig. Font \$2.34

BCD1

10 Line GOTHIC No. 6243

11c per char. in fonts; 17c per char. in sorts
3A Cap \$8.25; 4A \$11.66; Fig. Font \$2.86

BC3

12 Line GOTHIC No. 6243

13c per char. in fonts; 20c per char. in sorts
3A Cap \$9.75; 4A \$13.78; Fig. Font \$3.38

BC1

GOTHIC No. 630 (Class N)

4 Line GOTHIC No. 630

6c per char. in fonts; 9c per char. in sorts
3A Cap \$4.50; 4A \$6.36; Fig. Font \$1.56

BCDEFG3**6 Line GOTHIC No. 630**

7c per char. in fonts; 11c per char. in sorts
3A Cap \$5.25; 4A \$7.42; Fig. Font \$1.82

BCDE**8 Line GOTHIC No. 630**

9c per char. in fonts; 14c per char. in sorts
3A Cap \$6.75; 4A \$9.54; Fig. Font \$2.34

BC3**10 Line GOTHIC No. 630**

11c per char. in fonts; 17c per char. in sorts
3A Cap \$8.25; 4A \$11.66; Fig. Font \$2.86

BC1**12 Line GOTHIC No. 630**

14c per char. in fonts; 21c per char. in sorts
3A Cap \$10.50; 4A \$14.84; Fig. Font \$3.64

B3

GOTHIC No. 670 (Class O)

4 Line GOTHIC No. 670

6c per char. in fonts; 9c per char. in sorts
3A Cap \$4.50; 4A \$6.36; Fig. Font \$1.56

BCDE3**6 Line GOTHIC No. 670**

7c per char. in fonts; 11c per char. in sorts
3A Cap \$5.25; 4A \$7.42; Fig. Font \$1.82

BCD1**8 Line GOTHIC No. 670**

9c per char. in fonts; 14c per char. in sorts
3A Cap \$6.75; 4A \$9.54; Fig. Font \$2.34

BC1**10 Line GOTHIC No. 670**

11c per char. in fonts; 17c per char. in sorts
3A Cap \$8.25; 4A \$11.66; Fig. Font \$2.86

B3**12 Line GOTHIC No. 670**

14c per char. in fonts; 21c per char. in sorts
3A Cap \$10.50; 4A \$14.84; Fig. Font \$3.64

B1

GOTHIC No. 700 (Class P)

4 Line GOTHIC No. 700

7c per char. in fonts; 11c per char. in sorts
3A Cap \$5.25; 4A \$7.42; Fig. Font \$1.82

BCD3

6 Line GOTHIC No. 700

9c per char. in fonts; 14c per char. in sorts
3A Cap \$6.75; 4A \$9.54; Fig. Font \$2.34

BC1

8 Line GOTHIC No. 700

11c per char. in fonts; 17c per char. in sorts
3A Cap \$8.25; 4A \$11.66; Fig. Font \$2.86

B3

10 Line GOTHIC No. 700

13c per char. in fonts; 20c per char. in sorts
3A Cap \$9.75; 4A \$13.78; Fig. Font \$3.38

B1

12 Line GOTHIC No. 700

16c per char. in fonts; 24c per char. in sorts
3A Cap \$12.00; 4A \$16.96; Fig. Font \$4.16

B1

CHELTENHAM BOLD (Class O)

4 Line CHELTENHAM BOLD

6c per char. in fonts; 9c per char. in sorts
3A Cap \$4.50; 4A \$6.36; Fig. Font \$1.56

BCDE3

6 Line CHELTENHAM BOLD

7c per char. in fonts; 11c per char. in sorts
3A Cap \$5.25; 4A \$7.42; Fig. Font \$1.82

BCD

8 Line CHELTENHAM BOLD

9c per char. in fonts; 14c per char. in sorts
3A Cap \$6.75; 4A \$9.54; Fig. Font \$2.34

BC1

10 Line CHELTENHAM BOLD

11c per char. in fonts; 17c per char. in sorts
3A Cap \$8.25; 4A \$11.66; Fig. Font \$2.86

BC

12 Line CHELTENHAM BOLD

14c per char. in fonts; 21c per char. in sorts
3A Cap \$10.50; 4A \$14.84; Fig. Font \$3.64

B3

CHELTENHAM COND. (Class O)

Special wood type faces made to order
from your pencil sketches.

6 Line CHELTENHAM CONDENSED

7c per char. in fonts; 11c per char. in sorts
3A Cap \$5.25; 4A \$7.42; Fig. Font \$1.82

BCDI3

8 Line CHELTENHAM CONDENSED

9c per char. in fonts; 14c per char. in sorts
3A Cap \$6.75; 4A \$9.54; Fig. Font \$2.34

BCI3

10 Line CHELTENHAM CONDENSED

11c per char. in fonts; 17c per char. in sorts
3A Cap \$8.25; 4A \$11.66; Fig. Font \$2.86

BC3

12 Line CHELTENHAM CONDENSED

14c per char. in fonts; 21c per char. in sorts
3A Cap \$10.50; 4A \$14.84; Fig. Font \$3.64

B C

CHELTENHAM EX. COND. (Class O)

Lower case can be furnished for most wood
type faces in all sizes.

6 Line CHELTENHAM EX. CONDENSED

7c per char. in fonts; 11c per char. in sorts
3A Cap \$5.25; 4A \$7.42; Fig. Font \$1.82

BCDE1

8 Line CHELTENHAM EX. CONDENSED

9c per char. in fonts; 14c per char. in sorts
3A Cap \$6.75; 4A \$9.54; Fig. Font \$2.34

BCD3

10 Line CHELTENHAM EX. CONDENSED

11c per char. in fonts; 17c per char. in sorts
3A Cap \$8.25; 4A \$11.66; Fig. Font \$2.86

BCD

12 Line CHELTENHAM EX. CONDENSED

14c per char. in fonts; 21c per char. in sorts
3A Cap \$10.50; 4A \$14.84; Fig. Font \$3.64

BC3

MODE BOLD (Class O)

4 Line MODE BOLD

6c per char. in fonts; 9c per char. in sorts
3A Cap \$4.50; 4A \$6.36; Fig. Font \$1.56

BCDEF3**6 Line MODE BOLD**

7c per char. in fonts; 11c per char. in sorts
3A Cap \$5.25; 4A \$7.42; Fig. Font \$1.82

BCD1**8 Line MODE BOLD**

9c per char. in fonts; 14c per char. in sorts
3A Cap \$6.75; 4A \$9.54; Fig. Font \$2.34

BC1**10 Line MODE BOLD**

11c per char. in fonts; 17c per char. in sorts
3A Cap \$8.25; 4A \$11.66; Fig. Font \$2.86

B 3**12 Line MODE BOLD**

14c per char. in fonts; 21c per char. in sorts
3A Cap \$10.50; 4A \$14.84; Fig. Font \$3.64

B 3

MODE MEDIUM (Class O)

4 Line MODE MEDIUM

6c per char. in fonts; 9c per char. in sorts
3A Cap \$4.50; 4A \$6.36; Fig. Font \$1.56

BCDE3**6 Line MODE MEDIUM**

7c per char. in fonts; 11c per char. in sorts
3A Cap \$5.25; 4A \$7.42; Fig. Font \$1.82

BCD1**8 Line MODE MEDIUM**

9c per char. in fonts; 14c per char. in sorts
3A Cap \$6.75; 4A \$9.54; Fig. Font \$2.34

BC1**10 Line MODE MEDIUM**

11c per char. in fonts; 17c per char. in sorts
3A Cap \$8.25; 4A \$11.66; Fig. Font \$2.86

B 3**12 Line MODE MEDIUM**

14c per char. in fonts; 21c per char. in sorts
3A Cap \$10.50; 4A \$14.84; Fig. Font \$3.64

B 3

MODE COND. (Class O)

Wood Type may be purchased in sorts or
fonts up to 100 line.

6 Line MODE CONDENSED

7c per char. in fonts; 11c per char. in sorts
3A Cap \$5.25; 4A \$7.42; Fig. Font \$1.82

BCDE3

8 Line MODE CONDENSED

9c per char. in fonts; 14c per char. in sorts
3A Cap \$6.75; 4A \$9.54; Fig. Font \$2.34

BCD3

10 Line MODE CONDENSED

11c per char. in fonts; 17c per char. in sorts
3A Cap \$8.25; 4A \$11.66; Fig. Font \$2.86

BC3

12 Line MODE CONDENSED

14c per char. in fonts; 21c per char. in sorts
3A Cap \$10.50; 4A \$14.84; Fig. Font \$3.64

BC1

MODE EX. COND. (Class O)

Many modern type styles are now available
in wood type.

6 Line MODE EX. CONDENSED

7c per char. in fonts; 11c per char. in sorts
3A Cap \$5.25; 4A \$7.42; Fig. Font \$1.82

BCDEFG3

8 Line MODE EX. CONDENSED

9c per char. in fonts; 14c per char. in sorts
3A Cap \$6.75; 4A \$9.54; Fig. Font \$2.34

BCDE3

10 Line MODE EX. CONDENSED

11c per char. in fonts; 17c per char. in sorts
3A Cap \$8.25; 4A \$11.66; Fig. Font \$2.86

BCD3

12 Line MODE EX. CONDENSED

14c per char. in fonts; 21c per char. in sorts
3A Cap \$10.50; 4A \$14.84; Fig. Font \$3.64

BCD1

COOPER BLACK (Class O)

4 Line COOPER BLACK

6c per char. in fonts; 9c per char. in sorts
3A Cap \$4.50; 4A \$6.36; Fig. Font \$1.56

BCD3

6 Line COOPER BLACK

7c per char. in fonts; 11c per char. in sorts
3A Cap \$5.25; 4A \$7.42; Fig. Font \$1.82

BC3

8 Line COOPER BLACK

9c per char. in fonts; 14c per char. in sorts
3A Cap \$6.75; 4A \$9.54; Fig. Font \$2.34

B 8

10 Line COOPER BLACK

11c per char. in fonts; 17c per char. in sorts
3A Cap \$8.25; 4A \$11.66; Fig. Font \$2.86

B1

12 Line COOPER BLACK

14c per char. in fonts; 21c per char. in sorts
3A Cap \$10.50; 4A \$14.84; Fig. Font \$3.64

B

COOPER COND. (Class O)

You may buy a single word, figures or a
line of wood type.

6 Line COOPER BLACK CONDENSED

7c per char. in fonts; 11c per char. in sorts
3A Cap \$5.25; 4A \$7.42; Fig. Font \$1.82

BCD1

8 Line COOPER BLACK CONDENSED

9c per char. in fonts; 14c per char. in sorts
3A Cap \$6.75; 4A \$9.54; Fig. Font \$2.34

BC3

10 Line COOPER BLACK CONDENSED

11c per char. in fonts; 17c per char. in sorts
3A Cap \$8.25; 4A \$11.66; Fig. Font \$2.86

B 3

12 Line COOPER BLACK CONDENSED

14c per char. in fonts; 21c per char. in sorts
3A Cap \$10.50; 4A \$14.84; Fig. Font \$3.64

B3

COOPER EX. COND. (Class O)

Wood Type is much more economical than
expensive photo engravings.

6 Line COOPER BLACK EX. CONDENSED
7c per char. in fonts; 11c per char. in sorts
3A Cap \$5.25; 4A \$7.42; Fig. Font \$1.82

BCDEF3

8 Line COOPER BLACK EX. CONDENSED
9c per char. in fonts; 14c per char. in sorts
3A Cap \$6.75; 4A \$9.54; Fig. Font \$2.34

BCD3

10 Line COOPER BLACK EX. CONDENSED
11c per char. in fonts; 17c per char. in sorts
3A Cap \$8.25; 4A \$11.66; Fig. Font \$2.86

BCI3

12 Line COOPER BLACK EX. CONDENSED
14c per char. in fonts; 21c per char. in sorts
3A Cap \$10.50; 4A \$14.84; Fig. Font \$3.64

BC3

KABEL (Class O)

4 Line KABEL
6c per char. in fonts; 9c per char. in sorts
3A Cap \$4.50; 4A \$6.36; Fig. Font \$1.56

BCDEF3

6 Line KABEL
7c per char. in fonts; 11c per char. in sorts
3A Cap \$5.25; 4A \$7.42; Fig. Font \$1.82

BCD3

8 Line KABEL
9c per char. in fonts; 14c per char. in sorts
3A Cap \$6.75; 4A \$9.54; Fig. Font \$2.34

BC3

10 Line KABEL
11c per char. in fonts; 17c per char. in sorts
3A Cap \$8.25; 4A \$11.66; Fig. Font \$2.86

BIC

12 Line KABEL
14c per char. in fonts; 21c per char. in sorts
3A Cap \$10.50; 4A \$14.84; Fig. Font \$3.64

B3

RUGGED INLINE (Class R)

If you need a type face not shown,
send proof of several letters.

6 Line RUGGED INLINE

12c per char. in fonts; 18c per char. in sorts
3A Cap \$9.00; 4A \$12.72; Fig. Font \$3.12

B C D 3

8 Line RUGGED INLINE

14c per char. in fonts; 21c per char. in sorts
3A Cap \$10.50; 4A \$14.84; Fig. Font \$3.64

B C 3

10 Line RUGGED INLINE

17c per char. in fonts; 26c per char. in sorts
3A Cap \$12.75; 4A \$18.02; Fig. Font \$4.42

B C

12 Line RUGGED INLINE

20c per char. in fonts; 30c per char. in sorts
3A Cap \$15.00; 4A \$21.20; Fig. Font \$5.20

B 3

RUGGED (Class O)

4 Line RUGGED

6c per char. in fonts; 9c per char. in sorts
3A Cap \$4.50; 4A \$6.36; Fig. Font \$1.56

B C D E F 3

6 Line RUGGED

7c per char. in fonts; 11c per char. in sorts
3A Cap \$5.25; 4A \$7.42; Fig. Font \$1.82

B C D 3

8 Line RUGGED

9c per char. in fonts; 14c per char. in sorts
3A Cap \$6.75; 4A \$9.54; Fig. Font \$2.34

B C 3

10 Line RUGGED

11c per char. in fonts; 17c per char. in sorts
3A Cap \$8.25; 4A \$11.66; Fig. Font \$2.86

B C

12 Line RUGGED

14c per char. in fonts; 21c per char. in sorts
3A Cap \$10.50; 4A \$14.84; Fig. Font \$3.64

B 3

SHADOW (Class P)

4 Line SHADOW

7c per char. in fonts; 11c per char. in sorts
3A Cap \$5.25; 4A \$7.42; Fig. Font \$1.82

B C D E F G

6 Line SHADOW

9c per char. in fonts; 14c per char. in sorts
3A Cap \$6.75; 4A \$9.54; Fig. Font \$2.34

B C D 3

8 Line SHADOW

11c per char. in fonts; 17c per char. in sorts
3A Cap \$8.25; 4A \$11.66; Fig. Font \$2.86

B C 3

10 Line SHADOW

13c per char. in fonts; 20c per char. in sorts
3A Cap \$9.75; 4A \$13.78; Fig. Font \$3.38

B C 1

12 Line SHADOW

16c per char. in fonts; 24c per char. in sorts
3A Cap \$12.00; 4A \$16.96; Fig. Font \$4.16

B 3

REX (Class P)

4 Line REX

7c per char. in fonts; 11c per char. in sorts
3A Cap \$5.25; 4A \$7.42; Fig. Font \$1.82

B C D 3

6 Line REX

9c per char. in fonts; 14c per char. in sorts
3A Cap \$6.75; 4A \$9.54; Fig. Font \$2.34

B C 3

8 Line REX

11c per char. in fonts; 17c per char. in sorts
3A Cap \$8.25; 4A \$11.66; Fig. Font \$2.86

B I 3

10 Line REX

13c per char. in fonts; 20c per char. in sorts
3A Cap \$9.75; 4A \$13.78; Fig. Font \$3.38

B 3

12 Line REX

16c per char. in fonts; 24c per char. in sorts
3A Cap \$12.00; 4A \$16.96; Fig. Font \$4.16

B 1

ULTRA BODONI (Class P)

Wood type is good for making rubber stamps, electros and stereos.

6 Line ULTRA BODONI

9c per char. in fonts; 14c per char. in sorts
3A Cap \$6.75; 4A \$9.54; Fig. Font \$2.34

BC3

8 Line ULTRA BODONI

11c per char. in fonts; 17c per char. in sorts
3A Cap \$8.25; 4A \$11.66; Fig. Font \$2.86

B3

10 Line ULTRA BODONI

13c per char. in fonts; 20c per char. in sorts
3A Cap \$9.75; 4A \$13.78; Fig. Font \$3.38

C1

12 Line ULTRA BODONI

16c per char. in fonts; 24c per char. in sorts
3A Cap \$12.00; 4A \$16.96; Fig. Font \$4.16

B

ULTRA BODONI COND. (Class P)

Most wood type orders are shipped from stock the same day received.

6 Line ULTRA BODONI COND.

9c per char. in fonts; 14c per char. in sorts
3A Cap \$6.75; 4A \$9.54; Fig. Font \$2.34

BCD3

8 Line ULTRA BODONI COND.

11c per char. in fonts; 17c per char. in sorts
3A Cap \$8.25; 4A \$11.66; Fig. Font \$2.86

BC3

10 Line ULTRA BODONI COND.

13c per char. in fonts; 20c per char. in sorts
3A Cap \$9.75; 4A \$13.78; Fig. Font \$3.38

C13

12 Line ULTRA BODONI COND.

16c per char. in fonts; 24c per char. in sorts
3A Cap \$12.00; 4A \$16.96; Fig. Font \$4.16

B3

Type Faces shown on this page shipped
Eastern Territory within 3 Days
Midwest 5 Days West 8 Days

MISCELLANEOUS TYPE FACES

6 Line MODE LIGHT (Class O)

Made to order in all sizes from 4 to 72 line.

RED ROBIN 3

6 Line CASLON (Class O)

Made to order in all sizes from 4 to 72 line.

RED Hat 13

6 Line KABEL BOLD CONDENSED (Class O)

Made to order in all sizes from 4 to 72 line.

SANDWICH 5

6 Line RUGGED CONDENSED (Class O)

Made to order in all sizes from 4 to 72 line.

BOY Scouts 3

6 Line ITALIC CONDENSED (Class R)

Made in all sizes from 4 to 72 line.

BEAR Den 12

6 Line ITALIC BOLD (Class R)

Made in all sizes from 4 to 72 line.

ON Ice 5

AMERICAN WOOD TYPE MFG. CO. New York • Chicago • San Francisco

MISCELLANEOUS TYPE FACES

Type Faces shown on this page shipped
Eastern Territory within 3 Days
Midwest 5 Days West 8 Days

6 Line FRANKLIN GOTHIC (Class O)
Made to order in all sizes from 4 to 72 line.

BIG sale 2

6 Line FRANKLIN GOTHIC CONDENSED (Class O)
Made to order in all sizes from 4 to 72 line.

BIG farm 2

6 Line FRANKLIN GOTHIC EXTRA COND. (Class O)
Made to order in all sizes from 4 to 72 line.

HIRED men 23

6 Line FRANKLIN ITALIC BOLD (Class R)
Made to order in all sizes from 4 to 72 line.

BIG sale 2

6 Line FRANKLIN ITALIC CONDENSED (Class R)
Made to order in all sizes from 4 to 72 line.

HIRED men 3

6 Line No. 266 (Class L)
Made to order in all sizes from 4 to 72 line.

CONSUMER Market 5

AMERICAN WOOD TYPE MFG. CO. New York • Chicago • San Francisco

Type Faces shown on this page shipped
Eastern Territory within 3 Days
Midwest 5 Days West 8 Days

MISCELLANEOUS TYPE FACES

6 Line No. 4006 (Class L)

Made to order in Caps, Lower Case and Figures in all sizes.

SAN FRANCISCO 2

6 Line No. 4050 (Class L)

Made to order in Caps, Lower Case and Figures in all sizes.

HAIR RINSE 35

6 Line No. 4045 (Class M)

Made to order in Caps, Lower Case and Figures in all sizes.

REVOLVER 3

6 Line No. 6011 (Class M)

Made to order in Caps, Lower Case and Figures in all sizes.

CRUISES 35

6 Line No. 98 (Class O)

Made to order in Caps, Lower Case and Figures in all sizes.

BOUND 28

6 Line No. 5072 (Class O)

Made to order in Caps, Lower Case and Figures in all sizes.

RICHES 15

AMERICAN WOOD TYPE MFG. CO. New York • Chicago • San Francisco

MISCELLANEOUS TYPE FACES

Type Faces shown on this page shipped
Eastern Territory within 3 Days
Midwest 5 Days West 8 Days

6 Line No. 160 FIGURES (Class O)
Made to order in all sizes

12345 | 235¢

6 Line No. 165 FIGURES (Class O)
Made to order in all sizes

6 Line No. 170 FIGURES (Class P)
Made to order in all sizes from 4 to 72 line

123456¢

6 Line GOTHIC ART No. 2 (Class N)
Made to order in all sizes from 4 to 72 line

LONG RULE 35

6 Line GOTHIC ART No. 4 (Class O)
Made to order in all sizes from 4 to 72 line

SPORTS 35

6 Line HEBREW BOLD (Class Q)
Made to order in all sizes from 4 to 72 line

אבגדוזמפ

6 Line HEBREW CONDENSED (Class Q)
Made to order in all sizes from 4 to 72 line

אבדוזזחמסרז

AMERICAN WOOD TYPE MFG. CO. New York • Chicago • San Francisco

Type Faces shown on this page shipped
Eastern Territory within 3 Days
Midwest 5 Days West 8 Days

MISCELLANEOUS TYPE FACES

6 Line No. 630 OUTLINE (Class S)
Made to order in all sizes from 4 to 72 line

BOUNDRY 23

6 Line VOGUE OUTLINE (Class S)
Made to order in all sizes from 4 to 72 line

HONEY 35

6 Line OLD ENGLISH (Class S)
Made to order in all sizes from 4 to 72 line

Old Tales 5

6 Line BROADWAY CONDENSED (Class O)
Made to order in all sizes from 4 to 72 line

FINE CLOTHS

6 Line GOUDY EXTRA BOLD CONDENSED (Class O)
Made to order in all sizes from 4 to 72 line

BROKEN 23

6 Line GOUDY EXTRA BOLD (Class O)
Made to order in all sizes from 4 to 72 line

ROSES 123

6 LINE CALENDAR SETS

MADE TO ORDER

All Calendar Sets Are Made On Uniform Blocks — A Set Consists of Figures 1 to 31, Fractions and Blanks.

No. 6243 Franklin Gothic Cooper Condensed Mode Bold
25 25 25 25

Caslon Bold No. 110 Rex Roman Bold
25 25 25 25

No. 590 No. 180 No. 190 No. 200
25 25 25 25

6 LINE STOCK CUTS

No. 10 No. 20 No. 30 No. 40 No. 50 No. 60
AND THE FOR LBS EACH ONLY

Reverse Price Cuts No. 70 No. 80 No. 90 No. 100
25¢ 5¢ % R % 1/2

STOCK CUTS

5 Line	50c each—6 or more	40c each
6 Line	55c each—6 or more	45c each
8 Line	65c each—6 or more	55c each
10 Line	75c each—6 or more	65c each
12 Line	90c each—6 or more	75c each

Prices of larger sizes on request

CALENDAR SETS

4 Line Set	\$ 8.00
5 Line Set	9.00
6 Line Set	10.00
8 Line Set	11.00
10 Line Set	12.00
12 Line Set	13.00

Add 25% to above prices for Outline Sets

AMERICAN WOOD TYPE MFG. CO. New York • Chicago • San Francisco

8 Line MODERN SCRIPT

13c per char. in fonts; 20c per char. in sorts

3A Cap Font \$9.75; 4a L. C. Font \$11.18; No. 1 Fig. Font \$3.38

One Day Sale 8

10 Line MODERN SCRIPT

16c per char. in fonts; 24c per char. in sorts

3A Cap Font \$12.00; 4a L. C. Font \$13.76; No. 1 Fig. Font \$4.16

Great Day 3

12 Line MODERN SCRIPT

19c per char. in fonts; 29c per char. in sorts

3A Cap Font \$14.25; 4a L. C. Font \$16.34; No. 1 Fig. Font \$4.94

Reduced 59

15 Line MODERN SCRIPT

23c per char. in fonts; 35c per char. in sorts

3A Cap Font \$17.25; 4a L. C. Font \$19.78; No. 1 Fig. Font \$5.98

Sun 134

FLASH SCRIPT (Class Q)

8 Line FLASH SCRIPT

13c per char. in fonts; 20c per char. in sorts

3A Cap Font \$9.75; 4a L. C. Font \$11.18; No. 1 Fig. Font \$3.38

World Fair 1939

10 Line FLASH SCRIPT

16c per char. in fonts; 24c per char. in sorts

3A Cap Font \$12.00; 4a L. C. Font \$13.76; No. 1 Fig. Font \$4.16

Semi-Annual

12 Line FLASH SCRIPT

19c per char. in fonts; 29c per char. in sorts

3A Cap Font \$14.25; 4a L. C. Font \$16.34; No. 1 Fig. Font \$4.94

New York 1

15 Line FLASH SCRIPT

23c per char. in fonts; 35c per char. in sorts

3A Cap Font \$17.25; 4a L. C. Font \$19.78; No. 1 Fig. Font \$5.98

Gold 25

AMERICAN WOOD TYPE MFG. CO. New York • Chicago • San Francisco

6 Line BROADSTROKE SCRIPT

11c per char. in fonts; 17c per char. in sorts

3A Cap Font \$8.25; 4A Cap Font \$9.46; No. 1 Fig. Font \$2.86

Roadside 325

8 Line BROADSTROKE SCRIPT

13c per char. in fonts; 20c per char. in sorts

3A Cap Font \$9.75; 4a L. C. Font \$11.18; No. 1 Fig. Font \$3.38

Badland 5

10 Line BROADSTROKE SCRIPT

16c per char. in fonts; 24c per char. in sorts

3A Cap Font \$12.00; 4a L. C. Font \$13.76; No. 1 Fig. Font \$4.16

Water 5

12 Line BROADSTROKE SCRIPT

19c per char. in fonts; 29c per char. in sorts

3A Cap Font \$14.25; 4a L. C. Font \$16.34; No. 1 Fig. Font \$4.94

House 1

15 Line BROADSTROKE SCRIPT

23c per char. in fonts; 35c per char. in sorts

3A Cap Font \$17.25; 4a L. C. Font \$19.78; No. 1 Fig. Font \$5.98

Sale 3

24 Line No. 510

24c per char. in fonts; 36c per char. in sorts
3A Cap \$18.00; 4A \$25.44; Fig. Font \$6.24

B

24 Line No. 550

24c per char. in fonts; 36c per char. in sorts
3A Cap \$18.00; 4A \$25.44; Fig. Font \$6.24

B

24 Line No. 590

25c per char. in fonts; 38c per char. in sorts
3A Cap \$18.75; 4A \$26.50; Fig. Font \$6.50

B

20 Line No. 510

20c per char. in fonts; 30c per char. in sorts
3A Cap \$15.00; 4A \$21.20; Fig. Font \$5.20

B

20 Line No. 550

20c per char. in fonts; 30c per char. in sorts
3A Cap \$15.00; 4A \$21.20; Fig. Font \$5.20

B

20 Line No. 590

21c per char. in fonts; 32c per char. in sorts
3A Cap \$15.75; 4A \$22.26; Fig. Font \$5.46

B

24 LINE WOOD TYPE

20 LINE WOOD TYPE

20 LINE WOOD TYPE

20 Line No. 6243

21c per char. in fonts; 32c per char. in sorts
3A Cap \$15.75; 4A \$22.26; Fig. Font \$5.46

BB

20 Line No. 670

22c per char. in fonts; 33c per char. in sorts
3A Cap \$16.50; 4A \$23.32; No. 1 Fig. Font \$5.72

BB

24 LINE WOOD TYPE

24 Line No. 6243

25c per char. in fonts; 38c per char. in sorts
3A Cap \$18.75; 4A \$26.50; Fig. Font \$6.50

BB

24 Line No. 670

26c per char. in fonts; 39c per char. in sorts
3A Cap \$19.50; 4A \$27.56; No. 1 Fig. Font \$6.76

BB

30 Line No. 500 (Class L)

RE

30 Line No. 510 (Class L)

RE

30 Line No. 550 (Class L)

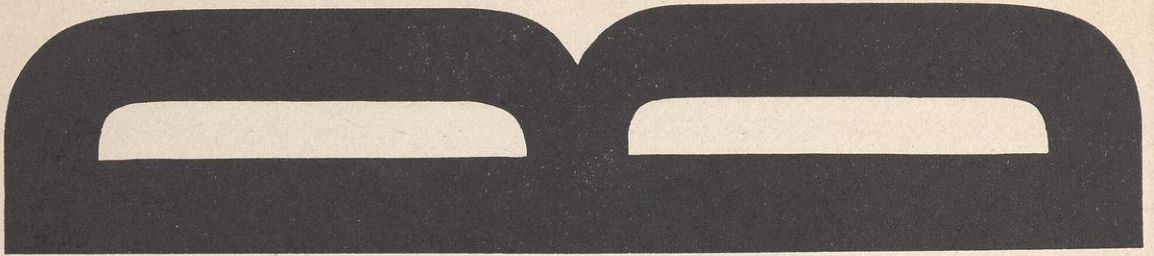
RE

30 Line No. 6243 (Class M)

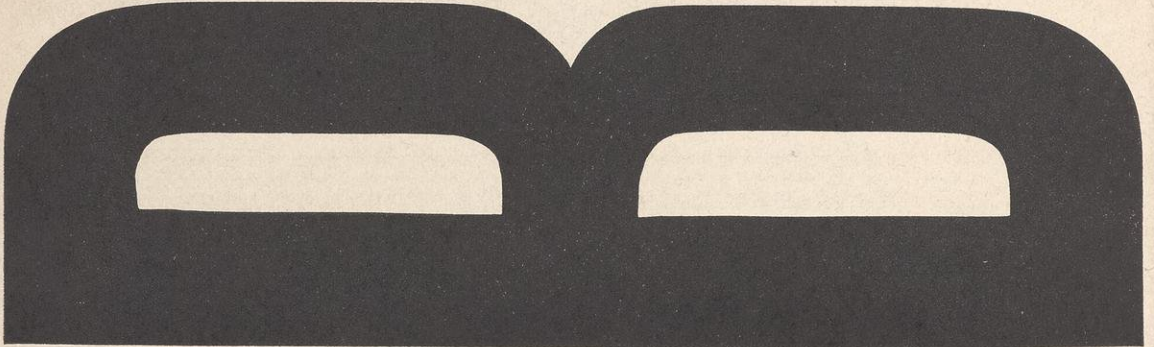
RE

All of our type faces can be furnished in 30 line or over.

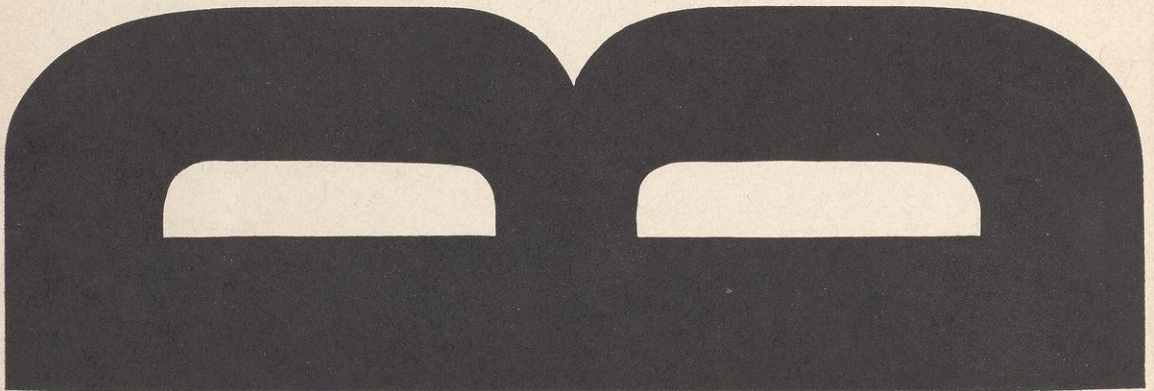
No. 500 (Class L)



No. 510 (Class L)



No. 550 (Class L)

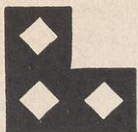


No. 590 (Class M)



MADE TO ORDER

CORNER ORNAMENTS AND BORDERS



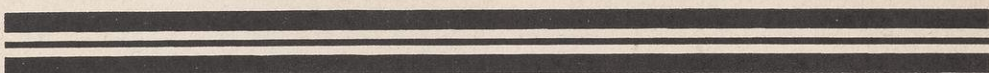
4 Line CORNER PIECE No. 10—SET OF FOUR \$1.00—RULE 50c per yard.



4 Line CORNER PIECE No. 20—SET OF FOUR \$1.00—RULE 50c per yard.



4 Line CORNER PIECE No. 30—SET OF FOUR \$1.00—RULE 50c per yard.



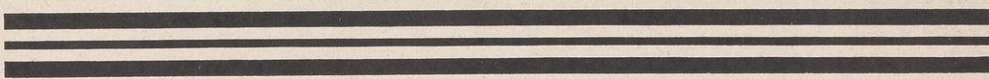
4 Line CORNER PIECE No. 40—SET OF FOUR \$1.00—RULE 50c per yard.



4 Line CORNER PIECE No. 50—SET OF FOUR \$1.00—RULE 50c per yard.



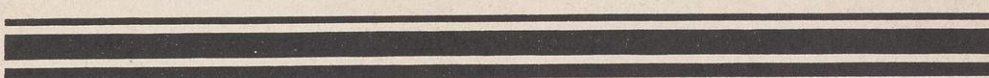
4 Line CORNER PIECE No. 60—SET OF FOUR \$1.00—RULE 50c per yard.



4 Line CORNER PIECE No. 70—SET OF FOUR \$1.00—RULE 50c per yard.



4 Line CORNER PIECE No. 80—SET OF FOUR \$1.00—RULE 50c per yard.



3 line set of 4—\$1.00. Rule to match—50c per yd.

4 line set of 4—\$1.00. Rule to match—50c per yd.

5 line set of 4—\$1.25. Rule to match—60c per yd.

6 line set of 4—\$1.50. Rule to match—70c per yd.

8 line set of 4—\$1.75. Rule to match—80c per yd.

10 line set of 4—\$2.00. Rule to match—90c per yd.

AMERICAN WOOD TYPE MFG. CO. New York • Chicago • San Francisco

ORNAMENT FONTS

These ornaments are made of specially prepared Rock Maple Endwood. They are type high and are cut on square bases. Ornaments may be purchased individually. Large size ornaments and special designs are made to order at very reasonable prices.

CIRCLE FONT

Single Circle Font—6 pieces.....	\$.85
Double Circle Font—12 pieces.....	\$1.60
Triple Circle Font—18 pieces.....	\$2.35



3 Line



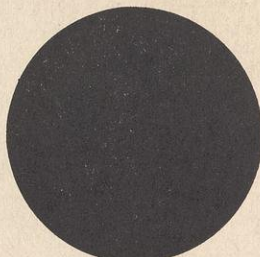
4 Line



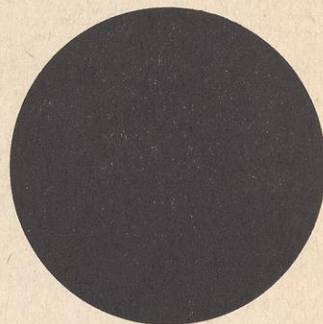
6 Line



5 Line



8 Line



10 Line

SQUARE FONT

Single Square Font—6 pieces.....	\$.85
Double Square Font—12 pieces.....	\$1.60
Triple Square Font—18 pieces.....	\$2.35



3 Line



4 Line



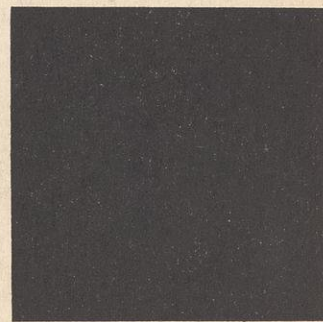
6 Line



5 Line



8 Line



10 Line

STAR FONT

Single Star Font—6 pieces.....	\$.85
Double Star Font—12 pieces.....	\$1.60
Triple Star Font—18 pieces.....	\$2.35



3 Line



4 Line



6 Line



5 Line



8 Line



10 Line

Ornaments may be purchased individually at the following prices:

3 Line	15c each	6 Line	25c each	12 Line	40c each
4 Line	15c each	8 Line	30c each	15 Line	50c each
5 Line	20c each	10 Line	35c each	20 Line	75c each

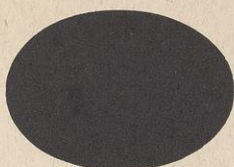
AMERICAN WOOD TYPE MFG. CO. New York • Chicago • San Francisco

Single No. 1—Oval Font— 6 pieces.....	\$.85
Double No. 1—Oval Font—12 pieces.....	\$1.60
Triple No. 1—Oval Font—18 pieces.....	\$2.35

No. 1—OVAL FONT



6 Line



5 Line



4 Line



3 Line



8 Line



10 Line

Single No. 2—Oval Font— 6 pieces.....	\$.85
Double No. 2—Oval Font—12 pieces.....	\$1.60
Triple No. 2—Oval Font—18 pieces.....	\$2.35

No. 2—OVAL FONT



5 Line



4 Line



3 Line



2 Line



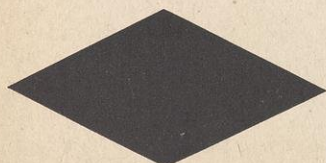
6 Line



8 Line

Double Diamond Font—6 pieces.....	\$.85
Double Diamond Font—12 pieces.....	\$1.60
Triple Diamond Font—18 pieces.....	\$2.35

No. 2—DIAMOND FONT



5 Line



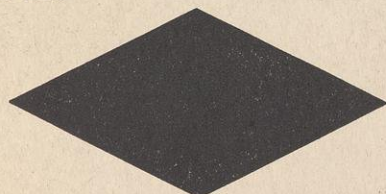
4 Line



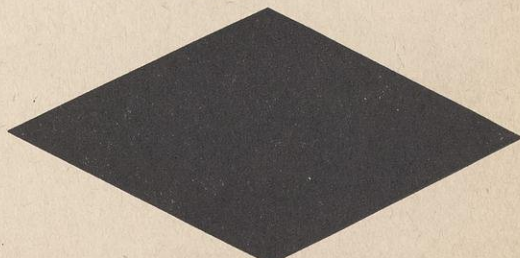
3 Line



2 Line



6 Line



8 Line

For prices of individual solid ornaments, see preceding page.

AMERICAN WOOD TYPE MFG. CO. New York • Chicago • San Francisco

TRIANGLE FONT



3 Line



6 Line



4 Line



5 Line



8 Line



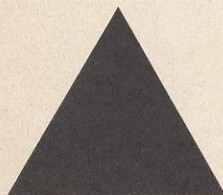
10 Line

Single Triangle Font—6 pieces.....	\$.85
Double Triangle Font—12 pieces.....	\$1.60
Triple Triangle Font—18 pieces.....	\$2.35

PYRAMID FONT



3 Line



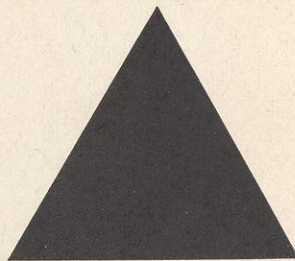
6 Line



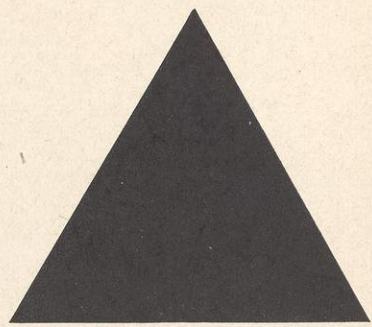
4 Line



5 Line



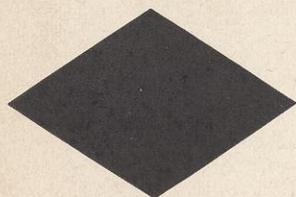
8 Line



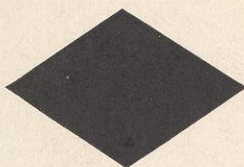
10 Line

Single Pyramid Font—6 pieces.....	\$.85
Double Pyramid Font—12 pieces.....	\$1.60
Triple Triangle Font—18 pieces.....	\$2.35

No. 1—DIAMOND FONT



6 Line



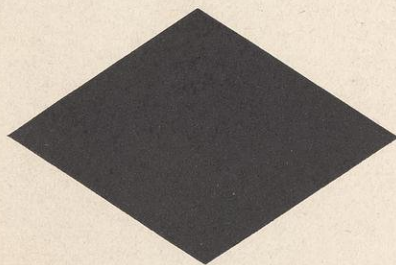
5 Line



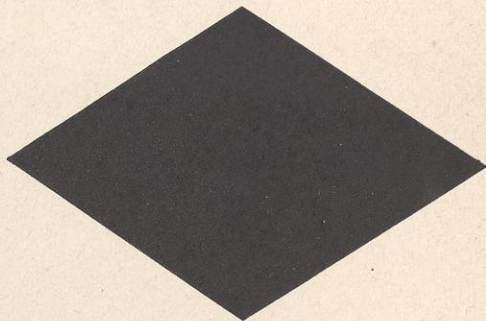
4 Line



3 Line



8 Line



10 Line

Single No. 1—Diamond Font— 6 pieces.....	\$.85
Double No. 1—Diamond Font—12 pieces.....	\$1.60
Tripl No. 1—Diamond Font—18 pieces.....	\$2.35

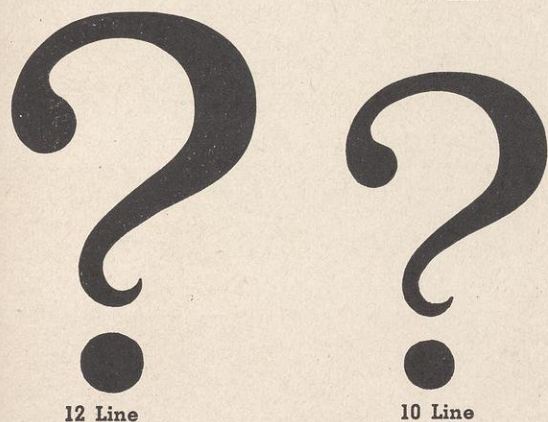
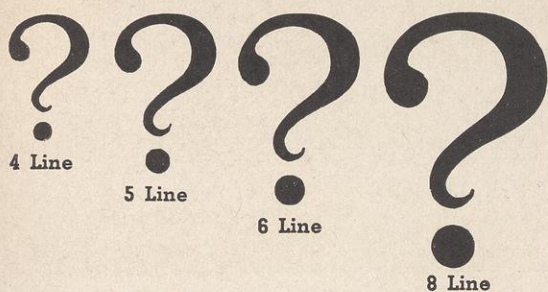
Ornaments may be purchased individually at the following prices:

3 Line	15c each	6 Line	25c each	12 Line	40c each
4 Line	15c each	8 Line	30c each	15 Line	50c each
5 Line	20c each	10 Line	35c each	20 Line	75c each

AMERICAN WOOD TYPE MFG. CO. New York • Chicago • San Francisco

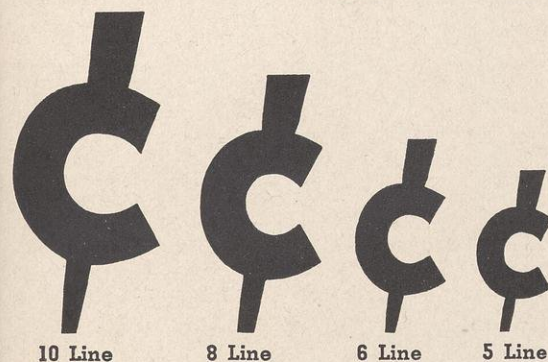
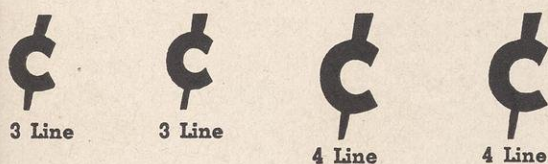
QUESTION MARK FONT

Single Question Mark Font—6 pieces.....\$.85
 Double Question Mark Font—12 pieces.....\$1.60
 Triple Question Mark Font—18 pieces.....\$2.35



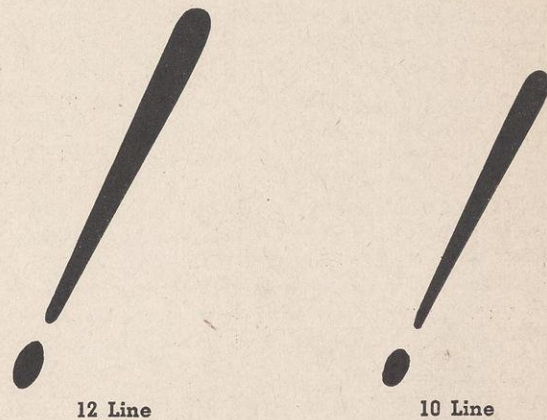
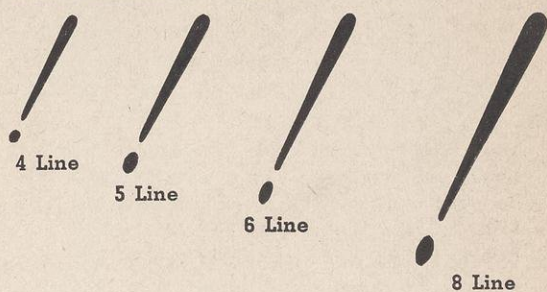
No. 1—CENT SIGN FONT

Single Cent Sign Font—8 pieces.....\$.85
 Double Cent Sign Font—16 pieces.....\$1.60
 Triple Cent Sign Font—24 pieces.....\$2.35



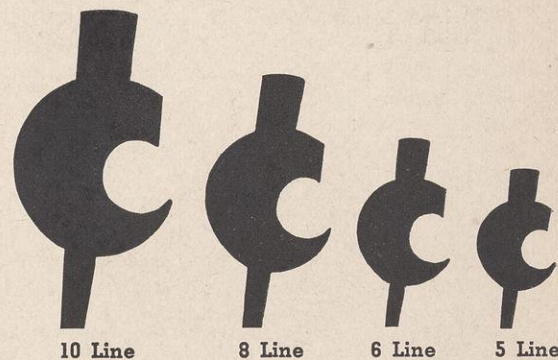
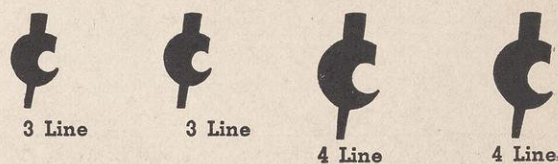
EXCLAMATION MARK FONT

Single Exclamation Mark Font—6 pieces.....\$.85
 Double Exclamation Mark Font—12 pieces.....\$1.60
 Triple Exclamation Mark Font—18 pieces.....\$2.35



No. 2—CENT SIGN FONT

Single Cent Sign Font—8 pieces.....\$.85
 Double Cent Sign Font—16 pieces.....\$1.60
 Triple Cent Sign Font—24 pieces.....\$2.35



Ornaments may be purchased individually at the following prices:

3 Line	15c each	6 Line	25c each	12 Line	40c each
4 Line	15c each	8 Line	30c each	15 Line	50c each
5 Line	20c each	10 Line	35c each	20 Line	75c each

AMERICAN WOOD TYPE MFG. CO. New York • Chicago • San Francisco

ZINCPLATE RULE

ZINCPLATE is a new product. It consists of heavy photo-engraver's zinc which is process annealed to hardwood laminated base. No nails are used and there are no shoulders. The laminated base has less tendency to warp than ordinary wooden base. ZINCPLATE is type high.

Advantages of ZINCPLATE:

There are no nails...sides are flush.
Easily cut on any printer's saw.
Reduces makeready time on the press.
Will outlast ordinary rule and blocks.
Has very little tendency to warp.
Is ideal for panelling and embossing.
Does not alter the color of the ink.

Prices of ZINCPLATE Rule (24" long):

18 pt.....	\$0.45	72 pt.....	\$1.40
24 pt.....	0.55	84 pt.....	1.60
30 pt.....	0.65	96 pt.....	1.80
36 pt.....	0.75	108 pt.....	2.00
42 pt.....	0.90	120 pt.....	2.25
48 pt.....	1.00	144 pt.....	2.50
60 pt.....	1.20	180 pt.....	3.05

ZINCPLATE Rules may be purchased cut to any measure. Add 5c per cut.

ZINCPLATE TINT PLATES

ZINCPLATE is the finest kind of tint plate and varnishing plate obtainable for letter press work.



ZINCPLATE stock sizes are 3 1/2 sq. in.

18x24 inch block.....	\$15.12
12x24 inch block.....	10.08
12x18 inch block.....	7.56
12x12 inch block.....	5.04
9x12 inch block.....	3.78
Special: A full slab of ZINCPLATE size 24x36 in. is only 3c sq. in., \$25.92.	

ZINCPLATE is easily cut on any saw. There is no fuss over nailing, bevelling or anchoring since the zinc is annealed to the wood. Large plates after being used for one job may be cut down to fit smaller jobs.

Prices of cut-to-measure ZINCPLATE:

3 1/2 c per sq. in. for blocks over 100 sq. in.
4 1/2 c per sq. in. for blocks over 50 sq. in.
5c per sq. in. for blocks under 50 sq. in.
Minimum block, 60c.

6 pt. Wood Rule only

12 pt. Zincplate Rule or Wood Rule

18 pt. Zincplate Rule or Wood Rule

24 pt. Zincplate Rule or Wood Rule

30 pt. Zincplate Rule or Wood Rule

36 Pt. Zincplate Rule or Wood Rule

42 pt. Zincplate Rule or Wood Rule

48 pt. Zincplate Rule or Wood Rule

60 pt. Zincplate Rule or Wood Rule

72 pt. Zincplate Rule or Wood Rule

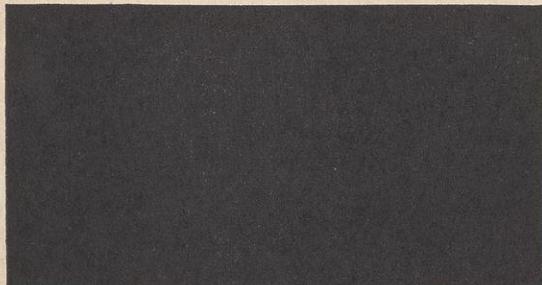
84 pt. Zincplate Rule or Wood Rule

WOOD RULE

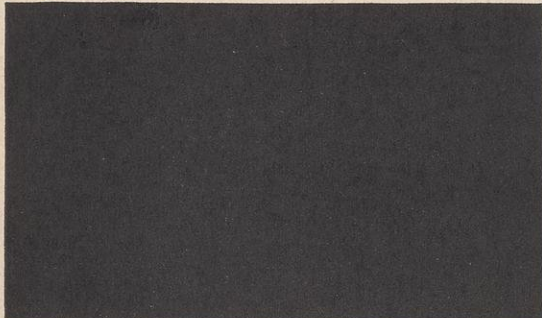
96 pt. Zincplate Rule or Wood Rule



108 pt. Zincplate Rule or Wood Rule



120 pt. Zincplate Rule or Wood Rule



144 pt. Zincplate Rule or Wood Rule



18 pt. Single Groove Wood Rule.....30c yd.



18 pt. Double Groove Wood Rule.....35c yd.



24 pt. Single Groove Wood Rule.....35c yd.



24 pt. Double Groove Wood Rule.....40c yd.



Our Wood Rule is made of type high Rock Maple. It has a specially treated surface, hand finished to insure good printing. It is by far the most economical form of rule and is satisfactory for most ordinary work.

Prices of Wood Rule 36" long:

6 pt.....	\$0.20 yd.	72 pt.....	\$0.60 yd.
12 pt.....	0.25 yd.	84 pt.....	0.75 yd.
18 pt.....	0.25 yd.	96 pt.....	0.85 yd.
24 pt.....	0.30 yd.	108 pt.....	0.95 yd.
30 pt.....	0.35 yd.	120 pt.....	1.05 yd.
36 pt.....	0.35 yd.	144 pt.....	1.25 yd.
42 pt.....	0.40 yd.	180 pt.....	1.45 yd.
48 pt.....	0.40 yd.	240 pt.....	1.70 yd.
60 pt.....	0.50 yd.	288 pt.....	2.00 yd.

Mitered Borders: Add 50c to the cost of the rule required. Specify outside measure.

Cut to Length Wood Rule: Add 5c for each cut to the price of the rule required.

WOOD TINT BLOCKS

Tint and Varnishing Blocks: The same kind of Rock Maple used in wood rule is obtainable for tint and varnishing blocks in any size to 28x44". The surface is treated so as to be free from "grain" marks.

Price of Plain Blocks:

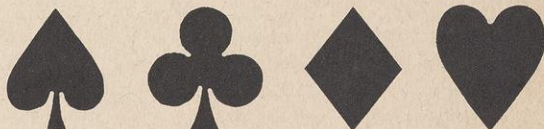
1½ plus 25c cutting charge per block.

Wood Engraving: For real economy use wood plates for simple engravings or shaped tints like Arrows, Borders, Ornaments, etc. Only a pencil sketch is required.

Maple Endwood for Engravers: Regular Endwood Rock Maple slabs are carried in stock. The wood is type high and of superior quality, finished like the wood for wood type. It is excellent for amateur or professional engraving. Printers use it for cutting their own plain tint blocks.

6x 9 block.....	\$1.50	12x18 block.....	\$4.05
12x12 block.....	2.75	14x22 block.....	5.50

CARD ORNAMENTS

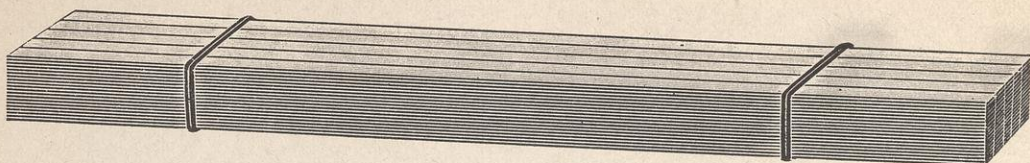


Card ornaments are made in all sizes. These may be purchased individually.

3 Line Set of Four.....	\$.60
4 Line Set of Four.....	.75
5 Line Set of Four.....	.90
6 Line Set of Four.....	1.10
8 Line Set of Four.....	1.25

AMERICAN WOOD TYPE MFG. CO. New York • Chicago • San Francisco

REGLET AND FURNITURE



Wood Reglet and Furniture is made of the finest kiln dried Birch. The wood is thoroughly seasoned, oil soaked and cut to accurate pica size. Wood Reglet will not work up like metal leads and slugs and yet Wood Reglet is much more economical. A stock of 250,000 yards of Reglet and Furniture is carried in stock so that large or small orders can be filled promptly.

PRICES OF WOOD REGLET AND FURNITURE IN YARD LENGTHS ($\frac{3}{8}$ " High):

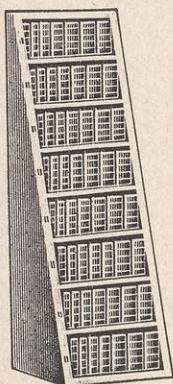
6 point.....	3 pica.....	8 pica.....	20 pica.....
12 point.....	4 pica.....	10 pica.....	24 pica.....
18 point.....	5 pica.....	12 pica.....	6 pt. ($\frac{3}{4}$ " high).....
2 pica.....	6 pica.....	15 pica.....	12 pt. ($\frac{3}{4}$ " high).....

Slug height furniture ($\frac{3}{4}$ " high) carried in stock.

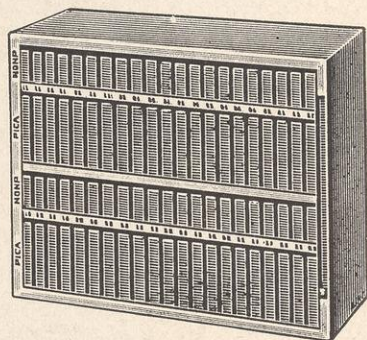
Softwood reglet carried in stock for immediate delivery.

See the next page for prices of Reglet and Furniture cut to labor saving lengths.

REGLET AND FURNITURE CABINETS AND FONTS



No. 10 Midget Furniture Cabinet contains 5 pieces in each length 10, 15, 20, 25, 30, 40, 50 and 60 picas and each width 2, 3, 4, 5, 6, 8 and 10 picas. Total 280 pieces. The furniture is accurately cut and oil soaked. The size is stamped on each piece. Cabinet and contents may be purchased separately.



No. 12 Furniture Cabinet (not illustrated) is twice as wide as No. 10 Midget Cabinet shown and it contains just twice as many pieces. Cabinet and contents may be purchased separately.

No. 16 Furniture Cabinet contains the following efficient assortment: 18 pieces of each 2, 3 and 4 picas wide; 15 pieces of each 5 and 6 picas wide; 9 pieces of each 8 and 10 picas wide—all in lengths 10, 15, 20, 25, 30, 40, 50, 60, 70, 80, 90, 100, 120, 140, 160 picas. Total: 1530 pieces.

No. 17 Furniture Cabinet contains approximately half of the No. 16 assortment: 9 pieces of each 2, 3 and 4 picas wide, 6 pieces of each 5, 6, 8 and 10 picas wide—all in lengths 10, 15, 20, 25, 30, 40, 50, 60, 70, 80, 90, 100, 120, 140 and 160 picas. Total: 765 pieces.

No. 25 Furniture Cabinet contains 10 pieces of each 2, 3, 4, 5, 6, 8 and 10 picas wide—all in lengths 10, 15, 20, 30, 40, 50, 60, 80, 100 and 120 picas. Total: 770 pieces.

No. 4 Reglet Cabinet illustrated contains a total of 2100 pieces of 6 and 12 point reglet in lengths from 10 to 51 picas. There are 25 pieces of each length and width. Cabinet and contents may be purchased separately.

No. 13705 Furniture Cabinet contains: 12 pieces of each 2 and 3 picas wide; 8 pieces of each 4 picas wide; 4 pieces of each 5, 6, 8 and 10 picas wide—all in lengths of 70, 80, 90, 100, 120, 130, 140 and 160 picas.

No. 13715 Furniture Cabinet contains: 24 pieces of each 2 and 3 picas wide; 16 pieces of each 4 and 5 picas wide; 12 pieces 6 picas wide; 8 pieces of 8 and 10 picas wide—all in lengths of 70, 80, 90, 100, 110, 120, 130, 140 and 160 picas.

No. 13725 Furniture Cabinet contains 28 pieces 2 picas wide; 24 pieces 3 and 4 picas wide; 20 pieces 5 and 6 picas wide and 16 pieces of each 8 and 10 picas wide—all in lengths 70, 80, 90, 100, 110, 120, 140 and 160 picas.

See Price List for Other Furniture Fonts

Reglet or Furniture Contents or Cabinets may be purchased separately. Cut furniture may be purchased in any size or quantity to your own assortment.

AMERICAN WOOD TYPE MFG. CO. New York • Chicago • San Francisco

REGLET AND FURNITURE

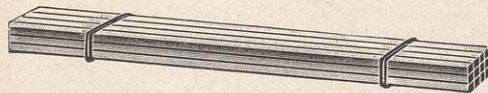
LABOR SAVING REGLET AND FURNITURE

Standard oil soaked Reglet and Furniture is sold accurately cut to any desired length and may be purchased in any quantity. In between sizes take price of next larger sizes.

Length	6 pt.	12 pt.	18 pt.	2 picas	3 picas	4 picas	5 picas	6 picas	8 picas	10 picas
10 picas	\$0.30	\$0.30	\$0.30	\$0.35	\$0.50	\$0.60	\$0.70	\$0.80	\$1.00	\$1.25
15 picas	.30	.35	.40	.50	.75	.90	1.05	1.15	1.50	1.85
20 picas	.40	.45	.55	.70	1.00	1.20	1.40	1.55	2.00	2.45
25 picas	.50	.60	.70	.85	1.25	1.50	1.75	1.90	2.50	3.10
30 picas	.60	.70	.80	1.05	1.50	1.85	2.10	2.30	3.00	3.70
40 picas	.75	.95	1.10	1.40	2.00	2.45	2.75	3.10	4.00	4.90
50 picas	.95	1.15	1.35	1.75	2.50	3.10	3.45	3.85	5.08	6.15
60 picas	1.15	1.40	1.60	2.10	3.00	3.70	4.15	4.60	6.00	7.40
70 picas	1.35	1.60	1.90	2.40	3.50	4.30	4.85	5.40	7.00	8.60
80 picas	1.55	1.85	2.15	2.80	4.00	4.90	5.50	6.15	8.00	9.85
100 picas	1.90	2.30	2.70	3.45	5.00	6.15	6.90	7.70	10.00	12.30
120 picas	2.30	2.75	3.25	4.15	6.00	7.40	8.30	9.20	12.00	14.80
140 picas	2.70	3.20	3.75	4.85	7.00	8.60	9.70	10.75	14.00	17.25
160 picas	3.10	3.70	4.30	5.50	8.00	9.85	11.00	12.30	16.00	19.65

Above prices are for 100 pieces—sold in any quantity.

CUTTING STICKS

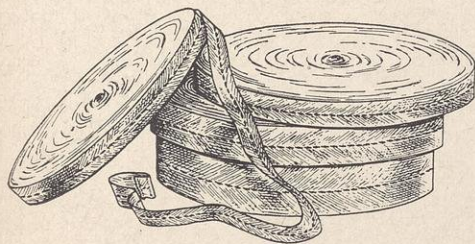


Our cutting sticks are made of the finest select Rock Maple obtainable. This wood is carefully sorted for straight grain in order to assure a minimum of warping. Our wood is carefully dried and treated so that the sticks will not split in the process of cutting.

Thousands of users throughout the United States have been purchasing cutting sticks from us year after year. Most of these customers are large plants and demand the very best obtainable. We carry a complete line of cutting sticks on hand at all times ready for immediate delivery.

In addition to our regular cutting sticks we carry a supply of Wright Drilling Machine Blocks and round cutting sticks.

PRESS TAPE



This is the famous Red Line Tape for Presses and Folding Machines. There is no finer quality tape made. Users of Red Line Tape are never troubled with breaking tape. It has proven through years of use that it will meet every strain and wear for pressroom and bindery. Millions of rolls of Red Line Tape have been sold. Accept no substitutes. Tapes are sold in all widths from $\frac{3}{8}$ inch to 2 inches and are sold in 36-yard rolls. Large stock on hand for prompt delivery.

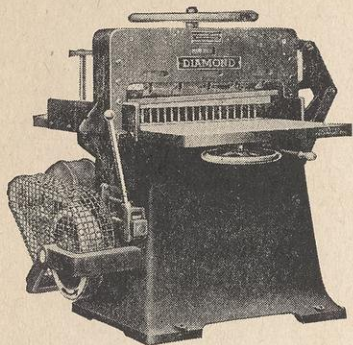
$\frac{3}{8}$ inch wide	$\frac{3}{4}$ inch wide	$1\frac{1}{8}$ inch wide
$\frac{1}{2}$ inch wide	$\frac{7}{8}$ inch wide	$1\frac{1}{4}$ inch wide
$\frac{5}{8}$ inch wide	1 inch wide	$1\frac{1}{2}$ inch wide

TAPE CEMENT—\$1.00 per tube. For joining ends of tape. No tools are needed. Dries in 60 minutes—STA-FAST CEMENT.

AMERICAN WOOD TYPE MFG. CO. New York • Chicago • San Francisco

CHALLENGE EQUIPMENT

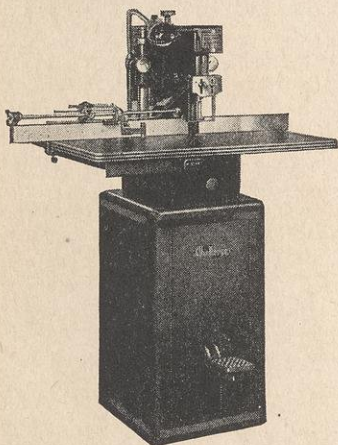
DIAMOND POWER PAPER CUTTERS



3 SIZES: 30½, 34½, 36½ INCHES

Massive, efficient, modernized paper cutters, built to handle bigger volumes of work in less time and at lower cost. Have approved safety double-motion starting lever and self-locking device that prevents accidental starting and repeat strokes. Back-gauge lock is positive, immovable. No cutting errors!

CHALLENGE PAPER DRILLS



7 STYLES: C, E, F, EH, FH, GH, EKH

Fast, efficient, easily operated Challenge Paper Drills cut costs on loose-leaf work and open up a wide range of profits. Made in foot and hydraulic power models. Capacities range from ⅛" round holes to 1½"; also slitting, slotting, V-slotting, and round cornering.

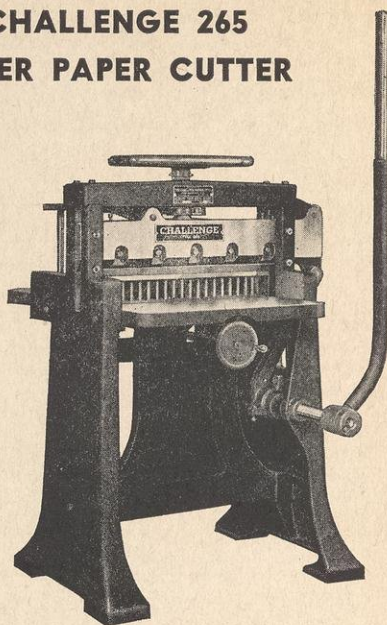
CHALLENGE ROUND CORNERING MACHINES

TWO STYLES: B and BH



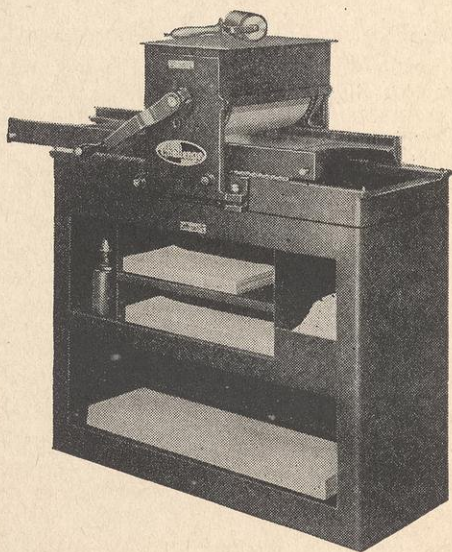
Built to produce a clean-cut corner on a pile of paper up to two inches thick. Have micrometer guides. Head is operated by extra heavy shafts, close-coupled to knife holder. Foot and hydraulic power.

CHALLENGE 265 LEVER PAPER CUTTER



SIZE: 26½ INCHES

The easiest-cutting lever cutter ever built! Counter-balanced, chrome plated, all-steel lever gives greatest possible leverage; no back-breaking effort required. Cutter has Duplex measuring tape for 1/16" and 1/12" graduations, strong center support, extra wide knife bar, easily squared back-gauge.



CHALLENGE PROOF PRESSES SERIES C

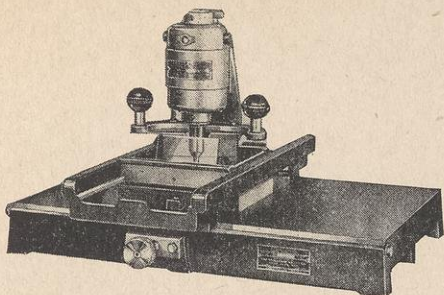
3 SIZES: Models 1418-C, 1425-C, 2025-C

These proof presses operate on the same principle as a cylinder press with reciprocating bed rolling smoothly on anti-friction bearings. Capacities range from 14¼ x 18-inch bed size to 20½ x 26 inches. Sold with or without steel stand.

AMERICAN WOOD TYPE MFG. CO. New York • Chicago • San Francisco

CHALLENGE EQUIPMENT

PORTABLE ROUTER AND TYPE-HIGH UNIT

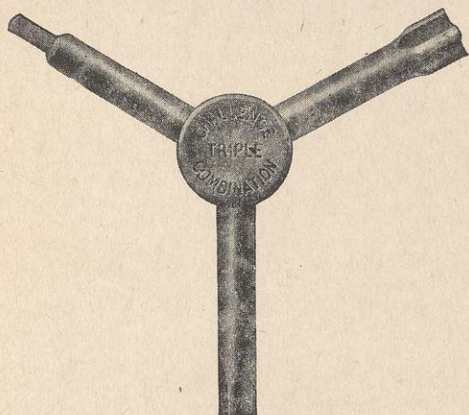


This is a combination unit for planing or routing solid metal, cored, or wood-mounted cuts. Use it anywhere—plug it in any light socket.

No. 10 Type-High Unit handles cuts 10 inches wide. Shipping weight 65 lbs.

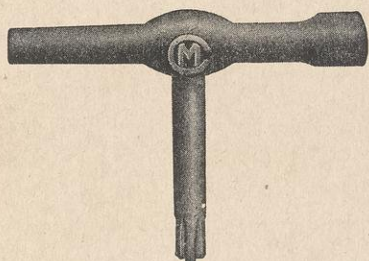
No. 20 Type-High Unit handles cuts 20 inches wide. Shipping weight 155 lbs.

TRIPLE COMBINATION QUOIN KEY



This handy key is for locking No. 1 quoins, No. 2 quoins, and Wickersham quoins.

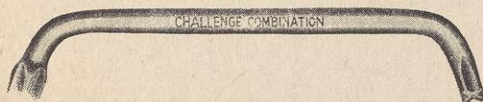
HEMPLE KEY



Challenge Hemple Quoin Keys have solid tool steel shanks.

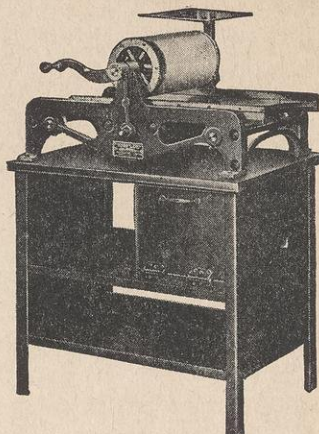
Made in three sizes—No. 0, No. 1 and No. 2.

CHALLENGE COMBINATION KEY



Challenge Angle Combination Keys are ideal for press lock up—one side has No. 1 key; opposite side No. 2 key. Made in plain steel—also Chromium Plated.

No. 0 POCO-PROOF PRESS



The No. 0 Poco handles up to and including all 12x18-inch galleys. Forms also can be proofed direct on the bed. Floor space is 27x51 inches. Equipment includes cylinder packing, galley plate, wrenches, ink plate, and 8 inch Challenge hand roller with core (not cast).

Shipping weight with stand.....405 lbs.

Shipping weight without stand.....275 lbs.

MIDGET QUOINS



No. 1 and 2 Quoins



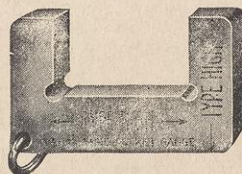
Challenge Quoins have corrugations on the center rib and slots to prevent slippage.

No. 2 Large sizes

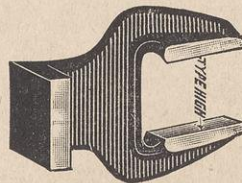
No. 0 Dwarf size

No. 1 Standard

POCKET TYPE HIGH GAUGE



CHALLENGE TYPE HIGH GAUGE



All Challenge Type High Gauges are an accurate .918 high.

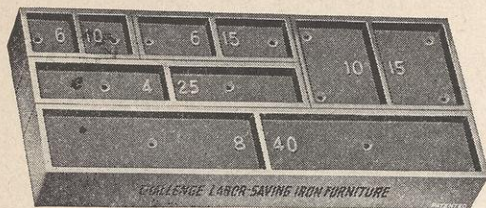
Pocket Type High Gauge (above)

Challenge Type High Gauge (below)

AMERICAN WOOD TYPE MFG. CO. New York • Chicago • San Francisco

CHALLENGE EQUIPMENT

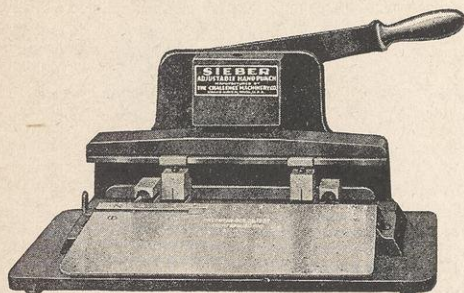
CHALLENGE IRON FURNITURE



Challenge Labor-Saving Iron Furniture is made from the highest grade of fine grained iron castings in our own specially equipped foundry, perfectly smooth and finely finished to absolute point-system accuracy—as dependable as type itself.

Light in Weight, but absolutely rigid and practically indestructible. Will not dent or bruise and will retain its positive accuracy under the most severe tests of locking and heating.

SIEBER HAND PUNCH



Where the volume of work does not require a foot power punch, this unit is ideal. It punches up to 8½ inches center to center. Comes equipped with two dies, with a wide variety of stock dies available. Oak base is 7½ x 13 inches—rubber feet. Shipping weight 20 lbs.

Write for information regarding foot power Sieber Punches.

CHALLENGE GALLEY LOCKS



Challenge Galley End Locks prevent spilling, easily inserted or removed. Made of spring steel for pressed steel, galvano steel, and similar style galleys.

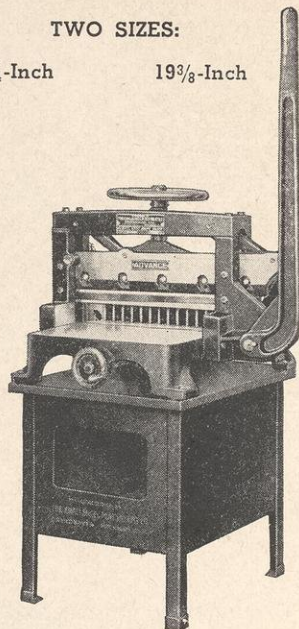
2" size—Price per dozen.....
3-5/16" size—Price per dozen.....
6" size—Price per dozen.....

ADVANCE PONY PAPER CUTTER

TWO SIZES:

16¼-Inch

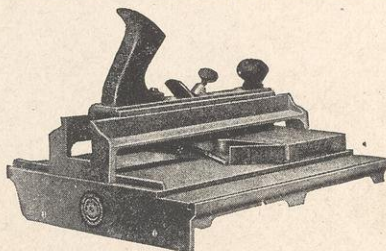
19⅜-Inch



The Advance Pony Cutter cuts and trims small work. Has balanced operating knives; easily removed, adjustable knife; safety device. Steel stand provides receptacle for waste paper.

	Shipping Weight
16¼" size (without stand)	325 lbs.
16¼" size on steel stand	390 lbs.
19⅜" size (without stand)	400 lbs.
19⅜" size on steel stand	465 lbs.

HOERNER TYPE-HIGH MACHINE



The Hoerner is a combination shute-board and type-high machine. Has both knife and file plane. Makes all wood mounted cuts or plates square and type high. Shipping weight 60 lbs.

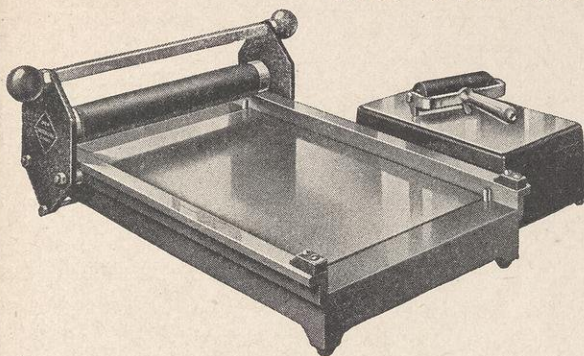
CHALLENGE HI-SPEED QUOINS



Two Hi-Speed Quoins supplant 5 to 8 ordinary quoins—save time and space. Made of steel, cadmium plated—self-contained—self-locking. One turn of the key locks each quoin—no slippage; no reglets required, no work-ups. Indicator dial shows register position. See price list of sizes and prices.

AMERICAN WOOD TYPE MFG. CO. New York • Chicago • San Francisco

No. 099 VANDERCOOK PROOF PRESS



No. 099 Vandercook Proof Press is an excellent economical proof press for the small printer, advertising agency, or advertising department, as well as practical and desirable auxiliary equipment for the large printer.

A single character, or a form the capacity of the press may be printed with equal facility. Impression cylinder is precision ground, constructed for self-adjustment to reasonable irregularities in type or plates.

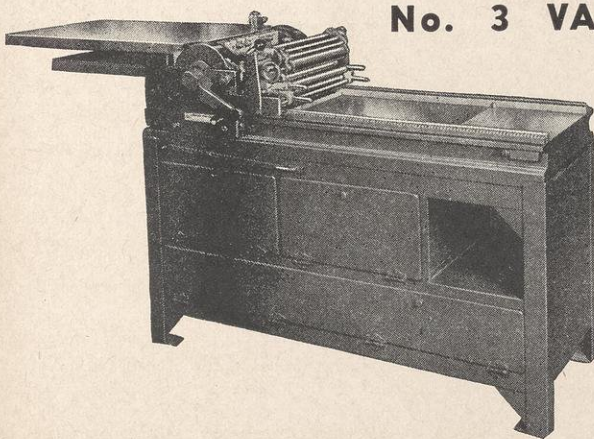
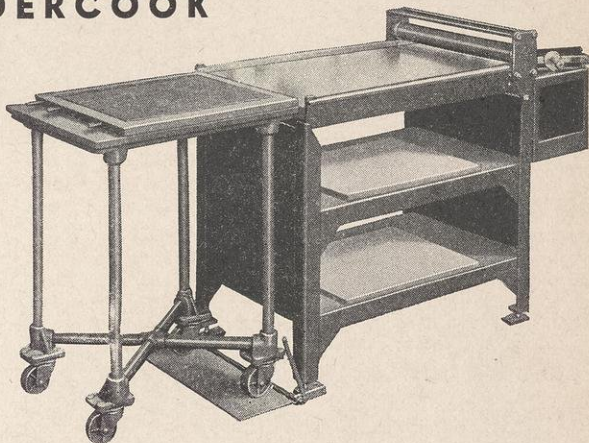
No. 099 Specifications: Bed size 13" x 22".
Form size 12 1/2" x 16" (with Sheet Feed 11" x 16").
. . . . Overall dimensions with Cabinet 20" x 31"
(without Cabinet 20" x 22"). Boxed shipping
weight of Press 110 lbs. . . . Crated shipping weight
of Cabinet 65 lbs.

No. 01 and No. 03 VANDERCOOK PROOF PRESSES

No. 01 and No. 03 Vandercook Proof Presses are similar to No. 099 described above. Method of operation is the same for all three presses. All are mechanically simple, heavily built with impression strain carried on ball bearings.

No. 03 Vandercook Proof Press will prove a full page newspaper form in stereotype chase. Special attachments are available for bringing trucks and press to proper height for page transfer without swinging trucks.

No. 01 Specifications: Bed size 15" x 32".
Form size 14 1/2" x 26" . . . over-all dimensions with
Cabinet 20" x 44" (without Cabinet 20" x 32")
boxed shipping weight of Press 450 lbs. . . . crated
shipping weight of Cabinet 230 lbs.



No. 3 VANDERCOOK PROOF PRESS

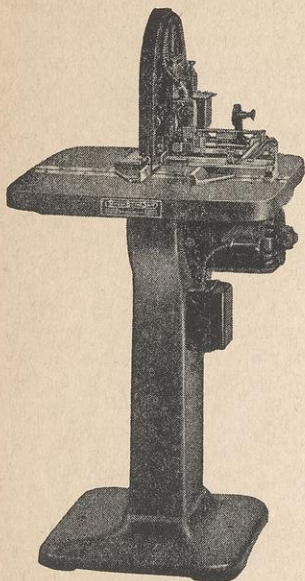
The No. 3 Vandercook Proof Press is a favorite among many printers. Features of No. 3
Extra heavy bed and cylinder and oversize ball bearings insure rigid, accurate impression. . . .
Easy and simple to operate. Impression cylinder is carried on six precision ball bearings. . . . Auto-
matic inking system insures even distribution. . . .
Fresh ink is distributed without oscillating cylinder. . . . Automatic grippers facilitate feeding and help
to insure accuracy of register. . . . Adjustable side and front guides tend to easy register. . . . For
accurate color work the Vandercook celluloid register punch is supplied. . . . Adjustable spring
steel fingers hold sheet tightly to impression cylinder during printing, preventing wrinkles. . . . Automatic
cylinder trip is provided for the return travel of cylinder.

No. 3 Specifications: Bed size 15" x 35". . . . Form size 14" x 18". . . . Floor space 2' 1" x 4' 9". . . . Crated
shipping weight 1150 lbs.

Vandercook & Sons now manufacture Vandercook and Hacker Proof Presses in 35 models and sizes and Hacker Block Levellers, Gauges and Test Blocks. Information on any of this equipment will be sent promptly on request.

ROUSE EQUIPMENT

ROUSE BAND SAW



The Rouse Band Saw does the work of hours in minutes. The No. 1 will accurately cut a full galley of slugs of a single measure or all different measures in 35 seconds. The No. 2 Rouse Band Saw will cut 7 inches of slugs in 18 seconds.

The entire elimination of the necessity of setting gauges, and reclamping slugs for each measure, is the basis of the speed of the Rouse Band Saw. Illustrations show simplicity of principle, and positive accuracy.

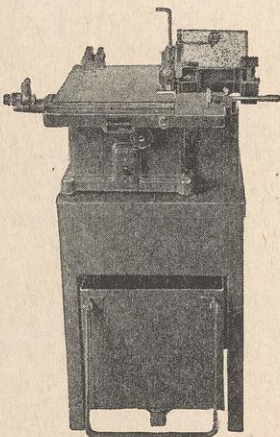
Operation is simple and safe. An entire take of slugs is placed on the table top. A single movement of the alignment bar positions them. The operator starts the machine, and in a few seconds the cut is completed. No measuring. No setting of gauges. Feed is automatic.

PRECISION EQUIPMENT

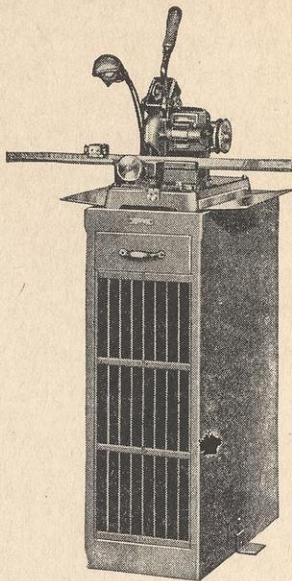
SOMITRIM SAW

A low priced practical saw for the printing plant. Complete in every detail.

1. Table—18x18". Working top: Heavily ribbed to prevent warping, smooth gliding surface.
2. Rack—72 pica cutting length capacity accurate to the thousandth of an inch.
3. Brass Gauge—graduated by half picas, numbered on picas and large distinctive numerals every five picas.
4. Point System Micrometer—clicks into position at each half point with six point adjustment each way.
5. Gauge Block—length indicator, finger touch adjustment to desired length, quick and accurate, 72 pica capacity.
6. Miter Blocks—foolproof and quick for perfect mitring.
7. Work Holder—"Tiger-Grip," none better on the market.



ROUSE POWER MITERER



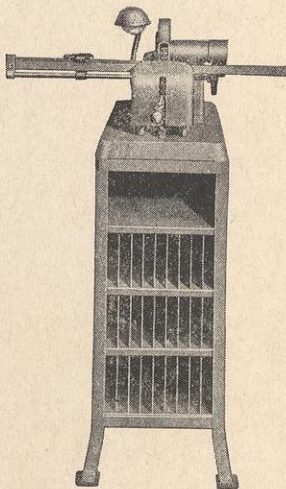
The original Rouse Vertical Rotary Miterer offers the fastest method of cutting perfect joining miters direct from strip material.

To increase this high-speed production, a rule-holding cabinet has been designed which serves as the base of the Rouse Vertical Rotary Miterer.

This cabinet places within easy reach of the operator's finger tips 24 different rules in strips.

The New Rouse Cabinet Model Vertical Rotary Miterer has been developed to save steps for the operator—to bring within arm's reach all the necessary strip material most frequently used. The correctness of principal of the pedestal type Vertical Rotary Miterer is retained in the new cabinet model machine. There is no change in machine construction. The new Rouse cabinet can be supplied for Rouse Vertical Rotary Miterer now in use.

ROTA MITERER



A vertical rotary miterer is a machine for quick and accurate mitring of exact length and perfect corner of panels, consisting of one or a multiple of rules up to 24-point in lead or brass, or special borders.

A machine designed for the up-to-date printer, newspaper plant or typographer.

The work of hours on other equipment takes only a few minutes on the ROTA MITER.

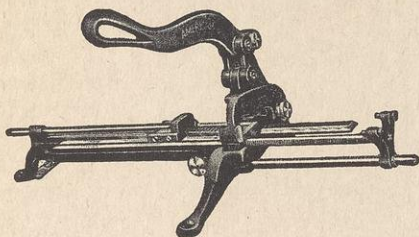
A box can be made in 45 seconds. Simple in construction, but a piece of equipment that will save time and money. Sold with or without pedestal.

AMERICAN WOOD TYPE MFG. CO. New York • Chicago • San Francisco

ROUSE PRODUCTS

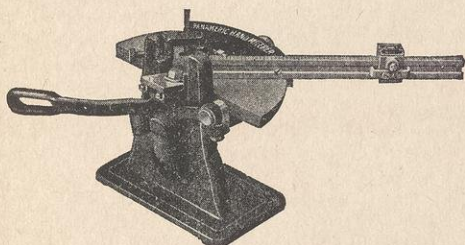
Rouse tools and devices are known to be the finest obtainable. They are considered the standard everywhere. In addition to the products shown below, we can supply any of the products in the Rouse Line including the Rouse Vertical Rotary Miterer, Rouse Register Quoins, Rouse Type Mortiser and Rouse Plate Mounting Equipment. Information on request.

ROUSE LEAD AND RULE CUTTERS



- Rouse American No. 10
- Rouse American No. 20
- Rouse American No. 30
- Rouse American No. 40
- Rouse American No. 45
- Rouse Lino Slug Clipper
- Rouse Ludlow Slug Cutter

ROUSE HAND MITERING MACHINES



Rouse Mitering Machines are the finest made. Be sure it's a Rouse.

- Panameric Hand Miterer
- Rouse Hand Mitering Machine
- Rouse Hand Mitering Machines with extension

MAKE-UP RULES

These Steel Make-up Rules are made from the finest quality tempered steel, highly finished. 12 or 13 ems.



ROUSE COMPOSING STICKS



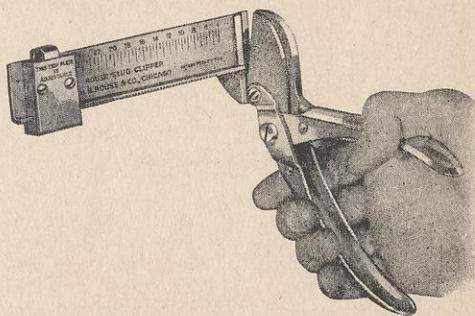
The Rouse Job Sticks are the most popular composing sticks on the market. They are 2" wide—set to nonpareils and picas and come in plain and stainless steel.

6 inch	10 inch	15 inch
8 inch	12 inch	20 inch

A complete line of Rouse Composing Sticks carried in stock for immediate delivery. Order now.

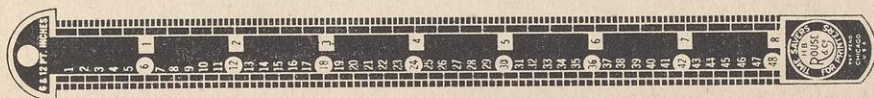
We can furnish the unrivalled Rouse Quarter Point and Rouse Micrometer Composing Sticks which set to quarter points. These are 50c more than regular Job Sticks listed above.

ROUSE SLUG CLIPPER



The Rouse Slug Clipper is as accurate as the most expensive of lead cutters. It pays for itself in the steps it saves. Equipped with the reliable Rouse gauge, it cuts to 30 picas with precision, shearing the slug to a clean square end that requires no shaving. It can be used on leads and slugs, column rules and thin spaces. In large plants, every composing room worker should have one.

ROUSE LINE GAUGES



These are made of solid brass—absolutely accurate—extremely legible lettering. School printing plant instructors are invited to write for quantity prices. Be sure to specify whether 6 and 12 pt. and inch or 6 and 12 pt. and agate markings are required.

8" Line Gauge

12" Line Gauge

18" Line Gauge

22" Line Gauge

AMERICAN WOOD TYPE MFG. CO. New York • Chicago • San Francisco

SPEEDLINE COMPOSING ROOM EQUIPMENT

SPEED-LINE AUTOMATIC CASTER

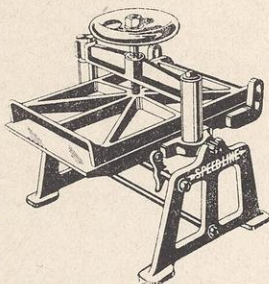


The new SPEED-LINE automatic caster is absolutely guaranteed to produce casts faster and better than any other machine of its size made. Changes from type-high to shell casting are made instantly without mechanical alteration. Bearers are furnished for casting type-

high, base high, and 11 pt. plates. Metal melting units are available in gas, gasoline, and electric types. Built in three sizes as follows: 10x14, 12x18, and 12x26.

SPEED-LINE JUNIOR CASTER

With the same general specifications as the new SPEED-LINE Automatic Caster, the junior line represents the most in convenience, reliability, and dollar for dollar value ever offered. Regardless of how infrequently you may be called upon to make a cast, its low price and complete versatility make it indispensable for profit producing printing. The SPEED-LINE Junior Caster is made in the same sizes as the Automatic.



SPEED-LINE SCORCHER

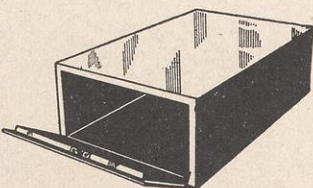


Flat, accurate casts are impossible from mats that are twisted or bent, and in all likelihood full of moisture. How often do you get mats that simply will not lie flat enough to give a good cast? The SPEED-LINE Scorchers

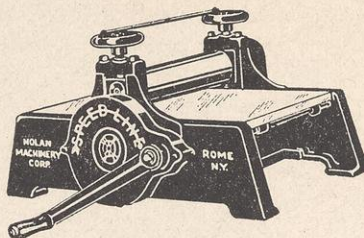
provides an inexpensive means of eliminating this annoyance. Three sizes, 10x15, 12x18, and 20x26, are available.

SPEED-LINE INSULATED HUMIDOR

The secret of good mats lies in the use of properly conditioned paper. A SPEED-LINE Humidor will maintain the proper moisture content in your mat paper indefinitely. Capacity 100 to 150 mats. Made in two sizes: for 12 x 20, and 20 x 24, mats.



SPEED-LINE SENIOR MATRIX MOULDER

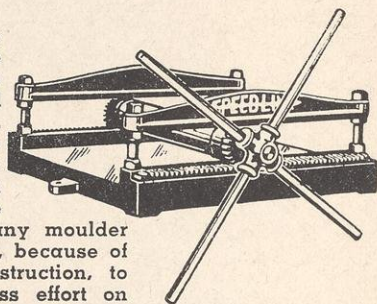


The SPEED-LINE Sr. Moulder is regularly furnished with a 16x24 inch moulding surface, easily accommodating standard chases. It is available with single reduction

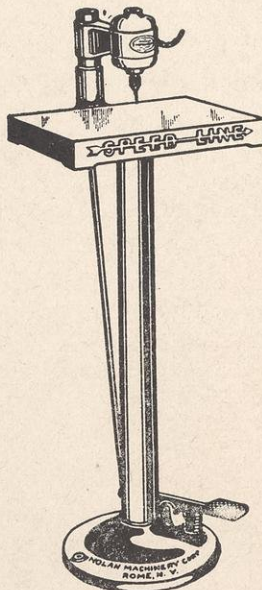
gearing (5 to 1 power ratio), or double reduction gearing (25 to 1 power ratio). This machine can be furnished in almost any size, with special chases to fit, on special order. Electric motor drive is also available.

SPEED-LINE JUNIOR MATRIX MOULDER

This is the ideal machine for shops where an occasional mat is needed. We guarantee it to produce mats equal in quality to those produced on any moulder of its size; and, because of its simple construction, to do so with less effort on the part of the operator.

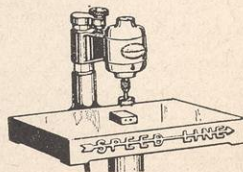


SPEED-LINE ROUTER AND TYPE-HIGH PLANER



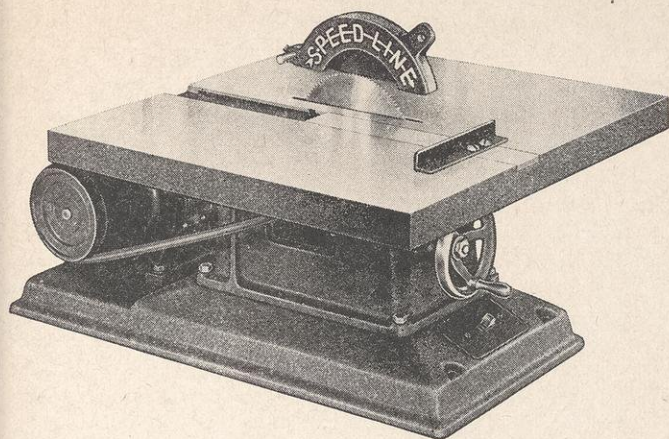
The SPEED-LINE Router is made in two sizes: 12 x 16, and 16 x 20 inches. Either size is available as a router only, or a router-planer combination. It is the only full-sized, full-powered floor type machine that compares favorably in price to a good handrouter. Smooth, clean cuts in all kinds of plates are produced with a heavy duty ball bearing motor having a working speed of about 12,000 R. P. M. Properly routed and planed plates, the kind SPEED-LINE produces, will save you many hours of make-ready.

Cut shows micrometer adjustment, planing bit and gauge block, furnished as standard equipment on router-planers.



AMERICAN WOOD TYPE MFG. CO. New York • Chicago • San Francisco

SPEED-LINE COMPOSING ROOM EQUIPMENT

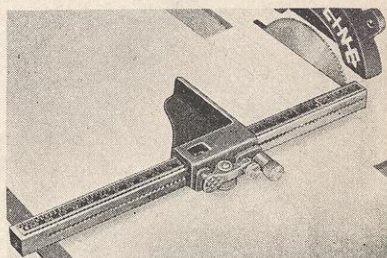


THE NEW SPEED-LINE ALL-PURPOSE COMPOSING ROOM SAW

Never before has the printing and publishing industry been offered such value as that found in the new SPEED-LINE All-Purpose Saw. Whether you operate a large plant or a one-man shop, the new SPEED-LINE will start paying its way plus a good profit from the moment it is installed. Its extreme simplicity, accuracy, and ease of

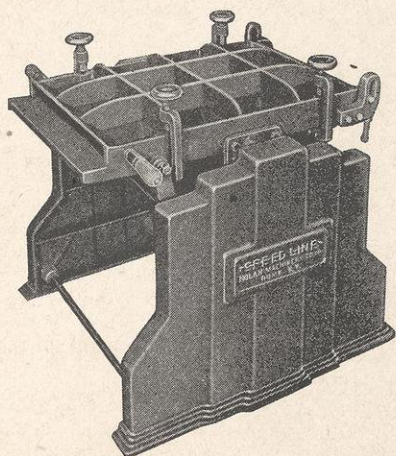
operation win for it a place on a par with machines costing many times as much. In the new SPEED-LINE Saw, a special type blade is used to produce a smooth, accurate cut, free from burrs, eliminating fussy trimmer knives. In addition to the pica gauge, a miter block, work holder clamp, and squaring gauge are available. The SPEED-LINE Saw is definitely a printers' saw, built to serve the printers' purpose, and that only.

Quick-acting pica gauge sets instantly and accurately for pica and half pica cuts from 1 to 72 picas. Engraved brass scale with large figures on black background.



SPEED-LINE FULL PAGE FLAT CASTER

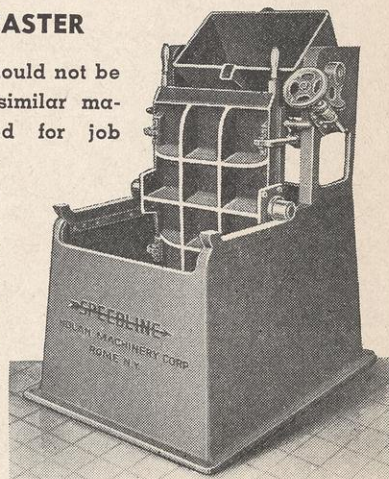
Massive simplicity is featured in the New SPEED-LINE Full Page Flat Caster. Modern in design as tomorrow, it is without sacrifice of any detail of strength or utility. Its heavily-ribbed platens of nickel-chrome alloy are designed to give years of



trouble-free service, and to produce casts that are really flat. Larger too in size than most full page casters, it provides that extra capacity so often needed.

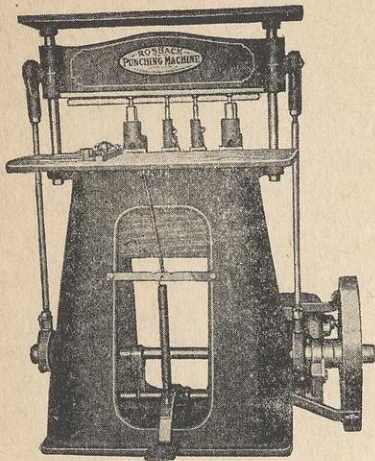
THE NEW SPEED-LINE FULL PAGE AUTO- MATIC CASTER

This machine should not be confused with similar machines designed for job shop duty. It is a 100% newspaper machine, built to stand up and produce high quality plates day in and day out, and unconditionally guaranteed. Its nickel-chrome alloy platens are nearly three times as heavy as those ordinarily employed, in addition to possessing warp-resisting qualities not found in ordinary cast iron or semi-steel. Just compare the total weight of 1500 lbs. with that of any caster at or near the price and you will readily understand how we can offer such a broad guarantee.



AMERICAN WOOD TYPE MFG. CO. New York • Chicago • San Francisco

ROSBACK EQUIPMENT



ROSBACK PONY SIX PUNCHING MACHINE

Designed to meet the requirements of concerns with a limited quantity of punching, perforating, round cornering, etc. the Foot Power Pony Six has every feature found on the Special Six. The only difference is the size and the method of applying power. The attachments for the Rosback Special Six and Power Driven Pony Six can all be used on this foot power machine. All attachments easily placed in position and removed in five minutes. Graduated table. Micrometer adjustment table gauge. Stand and bed cast in one piece. Heavy arched main cross head. Heavy Drive Shaft. Long bearings. Steel side rods.

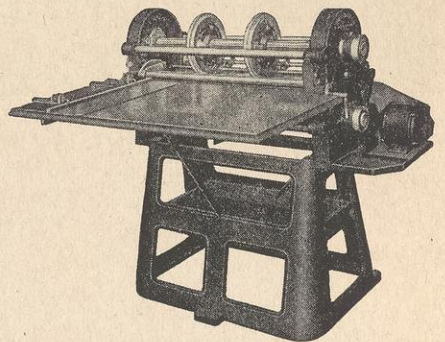
24 INCH SIZE

Also made in 28 inch size

The Rosback Pony Rotary will do strike and straight line perforating at the same time, there is not a job of perforating it will not do, within its range of six inches square up to 28 inches square. And it is just as fast as the larger Rotary. Strictly a jobbing commercial machine, the Rosback Pony Rotary is easily set from one job to another—will perforate from 1 to 10 sheets at a time, depending upon weight of stock. Sheets will not stick together and each lift lies perfectly flat. This is the secret of the Pony Rotary's great capacity.

ROSBACK PONY ROUND HOLE ROTARY PERFORATOR

Made in two sizes: 24 and 28 inch.



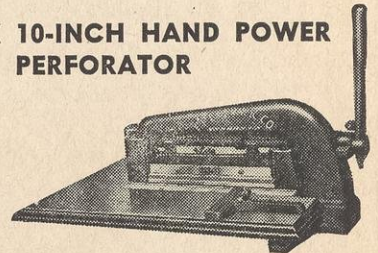
ROSCO FOOT POWER MULTIPLEX PUNCHING MACHINE



The biggest little punching machine on the market for punching round, open or special shapes of holes. The table is equipped with micrometer adjustment side gauge, assuring perfect register. Standard equipment includes two round hole punches and dies complete with heads, although any number of

heads can be used at one time. Different sizes of holes can be punched from 3/32 inch to 1/2 inch in diameter by thirty-seconds.

ROSBACK 10-INCH HAND POWER PERFORATOR



The Rosback Hand Power Perforator is an open end design and will perforate a solid line 10 inches long or any intermediate length, as for check work, etc. By turning the sheet, a 20 inch perforation may be obtained. The very latest improved back gauge permits close to the edge perforation and is equipped with micrometer adjustment, assuring perfect register. Power is easily and conveniently applied by a smooth operating hand lever.

ROSBACK PERFORATOR HEAD

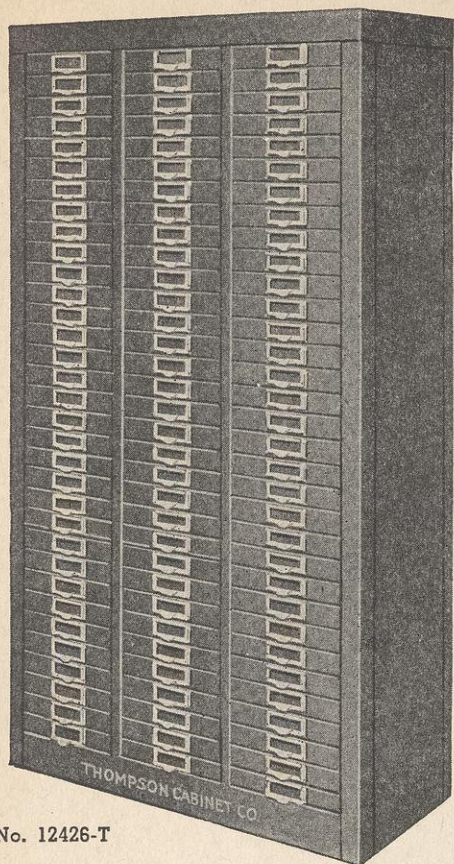


If your present Perforator is worn out replace the Perforating mechanism with this new Unit.

It will bring your present Perforator right up-to-date. It has the inlaid hardened tool steel die that we guarantee to perforate clean for a period of five years provided a new set of punches is inserted occasionally, and indefinitely against breakage. You already have a good Rosback Perforator Base and this new and greatly improved Unit fits your "Old Machine" perfectly and makes a brand new, thoroughly modern machine for you, at a big reduction in price.

AMERICAN WOOD TYPE MFG. CO. New York • Chicago • San Francisco

ELECTROTYPE STORAGE CABINET



No. 12426-T

Considering the great number of electrotypes used these days, there is an urgent need for a systematic method of storing them. The Cabinet illustrated above can be used advantageously by printing plants and by advertising departments of large companies.

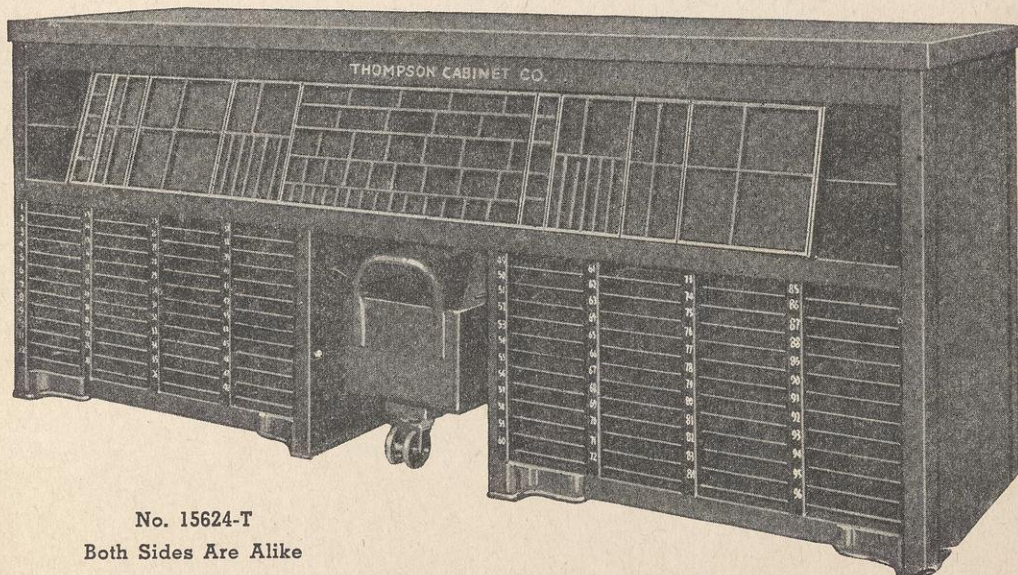
This Electrotpe Storage Cabinet has 99 drawers in three tiers. Each drawer measures $7\frac{7}{8} \times 12\frac{1}{4}$ inches, and has grooved sides for two adjustable partitions. Drawers are all steel construction and slide very easily. Each drawer also has a combination brass pull and label holder. The Cabinet is finished in Olive Green baked enamel.

Dimensions: Floor space required, $28 \times 12\frac{1}{2}$ inches. Height, 52 inches.

All Thompson Cabinets are made of the finest material obtainable. This equipment is carefully constructed and neatly finished.

Thompson Cabinets are known the world over for superior quality. All Thompson equipment is guaranteed to meet with the users approval.

STEEL MAKE-UP TABLE



No. 15624-T
Both Sides Are Alike

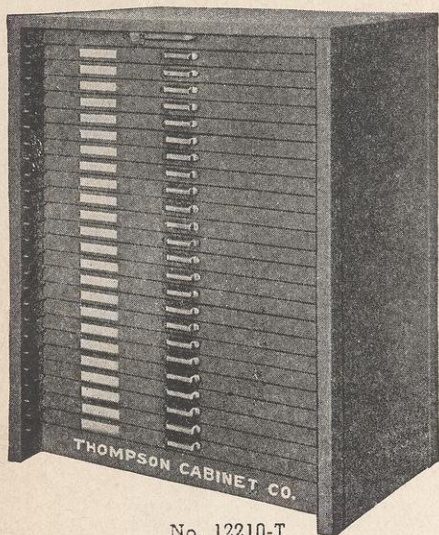
This Make-Up Table is eight feet long. In every detail it is carefully planned for the average newspaper plant. With the bank built into the body rather than overhead, it is much easier to work on top of the table. Also, the column materials are more conveniently located for the make-up men. Finished in Olive Green baked enamel. The removable unit trays of rust-proof steel have division strips of brass tubing.

Dimensions: Floor space required, 28×96 inches. Height overall, $38\frac{1}{4}$ inches.

AMERICAN WOOD TYPE MFG. CO. New York • Chicago • San Francisco

THOMPSON FLAT TOP CABINET

Our type cabinets are made by Thompson and guaranteed to be the finest obtainable. Cabinets can be furnished in wood and steel for every purpose. Let us know your requirements.



No. 12210-T

This flat top type cabinet is used where there is no need for additional work space or space for materials. If desired, the body can be fitted with any Thompson steel removable, single tier work top. The body is equipped with 23 steel front California Job Cases, and one Blank Case.

(Note: Cases for Wood Type or Blank Cases for storing cuts can be furnished instead of California Job Cases—and at a lower price.) Light over cases is not included as regular equipment. The cabinet measures $35\frac{1}{4} \times 2\frac{1}{2}$ " and is 43" high.

Thompson cabinets are finished in Olive Green baked enamel. Cases have Masonite bottoms and new Cadmium plated combination pulls and label holder.

This cabinet can also be furnished in a double tier model.

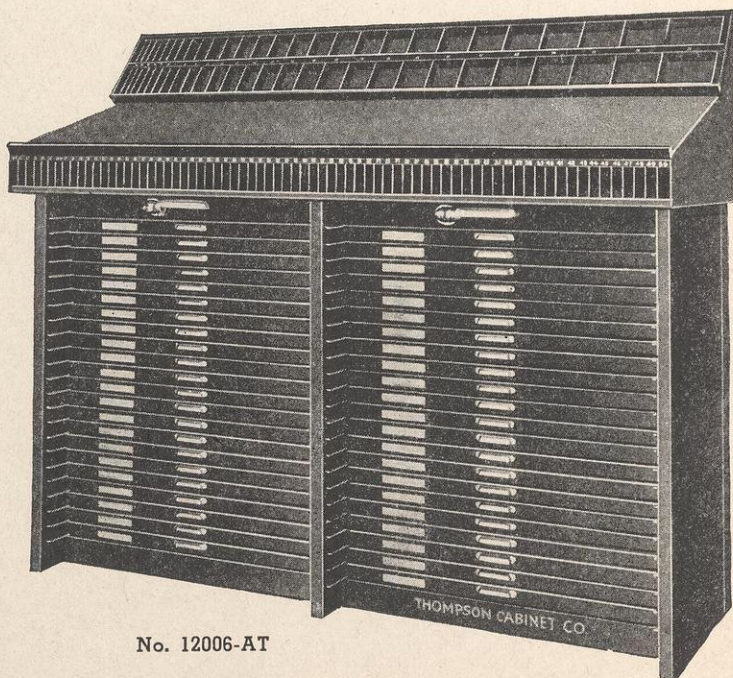
THOMPSON WALL TYPE CABINET

Cabinet contains 46 California Job Cases and 2 Blank Cases. Cases have Masonite bottoms and new Cadmium plated combination pulls and label holders.

Cabinet contains No. 12112-AT Working Top with sloping work surface which will hold two full size type cases. Upper part of top holds No. 13210-T Steel Lead and Slug Case with duplicate compartments to hold leads and slugs from 4 to 26 picas long, graduating by single picas. There is a duplicate compartment for 28-pica lengths, and additional compartments for 4 and 5-pica lengths.

Under working top is a Lead and Slug rack with numbered compartments to hold leads 10 to 40 picas long and slugs 10 to 50 picas long.

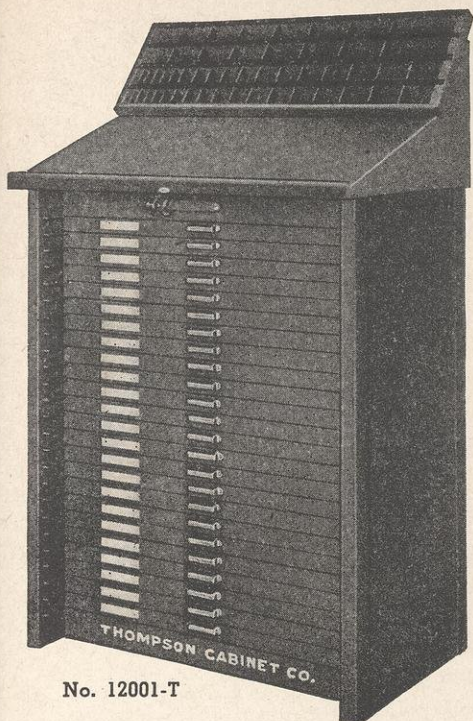
Cabinet finished in Olive Green baked enamel, furnished in steel or wood.



No. 12006-AT

AMERICAN WOOD TYPE MFG. CO. New York • Chicago • San Francisco

THOMPSON TYPE CABINET



No. 12001-T

This Steel Wall Type Cabinet is to be placed against a wall or at the end of a row of cabinets. Cabinet construction is of heavy steel, finished in olive green baked enamel.

Cases have Masonite bottoms and new Cadmium plated combination pulls and label holders.

Cabinet contains 23 California Job Cases and one blank case.

Working side of top will hold a full sized California Job Case.

Upper part has a No. 13205-T Lead and Slug Case accommodating in duplicate compartments leads and slugs measuring 4 to 26 picas long, graduating by picas—and also compartments for 35 pica lengths.

Dimensions: Floor space required, $36\frac{1}{8} \times 24$ inches. Height to working bank 44 inches.

CONCENTRATED TYPE CABINET

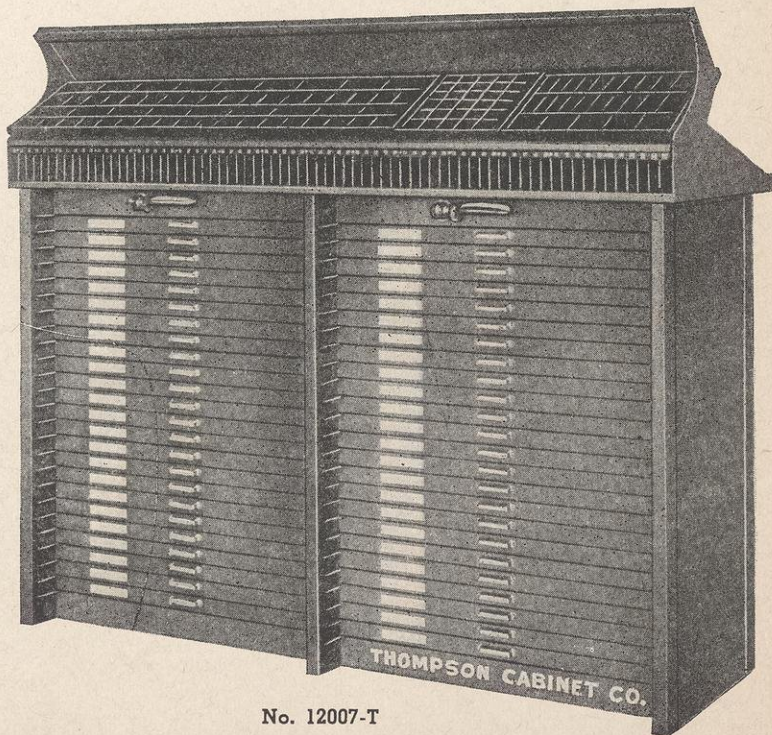
The concentrated steel type cabinet is the most popular of all working top cabinets. This cabinet has been designed to meet with the most exacting requirements of the modern compositor.

Cabinet contains 46 California and 2 blank cases. All cases have Masonite bottoms and new Cadmium plated label holders and pulls.

Working Top is equipped with a No. 12007-A space and Quad Case, No. 12007-B Copper and Brass Thin Space Case for half-point copper and one-point brass spaces, and a No. 12007-C Lead and Slug Case.

Body is made of heavy steel finished in Olive Green baked enamel.

Dimensions: Floor space required, $70\frac{1}{4} \times 24\frac{3}{4}$ inches.



No. 12007-T

AMERICAN WOOD TYPE MFG. CO. New York • Chicago • San Francisco

IMPOSING TABLES

An ideal Imposing Table for school or small plant. The storage space of letter boards on opposite side of table, and the well proportioned fonts of reglet and furniture have the approval of all users.

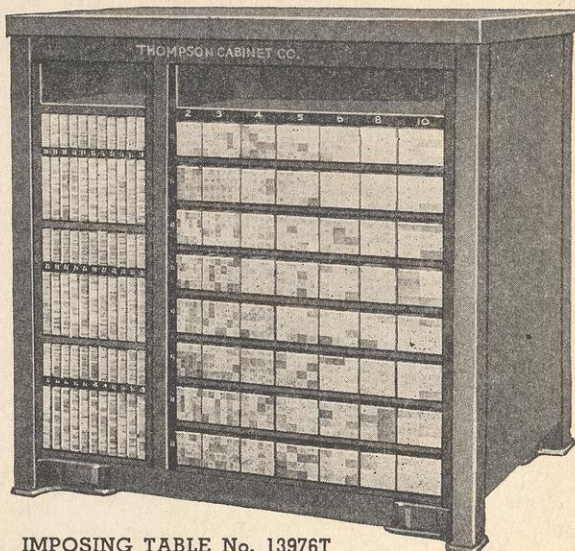
Table has cast iron top, 28x36 inches. Can also be furnished with marble surface measuring 28x36 inches.

The No. 13744A Furniture Font consists of:

24 pieces of 2 and 3 pica	} Cut 20-30-40-45-50 and 60 picas long.
16 pieces of 4 and 5 pica	
12 pieces of 6 pica	
8 pieces of 8 and 10 pica	

The No. 13730 Reglet Font consists of: 26 pieces each 6 point and pica reglet cut 10 to 33 picas long, graduating by single picas; and 36 to 60 picas long, graduating by three picas.

Opposite side of table contains 11 letter boards measuring $30\frac{5}{8} \times 16$ ". Full sized drawer is above letterboards.



IMPOSING TABLE No. 13976T

Showing reglet and furniture side. Opposite side contains letterboards. Also made in wood.

TABLE No. 14000T

Every kind of Imposing Table is included in the Thompson line. There are Imposing Tables holding reglet and furniture for lock-up; tables with galleys or letterboards for storing forms and tables with space for chase racks. Imposing Tables may be furnished in all sizes for job work, publication or newspaper work. Complete information and prices on request. Tell us your requirements.

No. 14000T — Steel Lockup and Storage Table. A real money maker for printers who do catalog, booklet and publication work.

Table provides for a 39x65" Iron Top or a 36x62" Marble Top.

Side shown holds 138 galleys, size $8\frac{3}{4} \times 13$ ", for storage.

Side not shown contains 6 and 12 pt. reglet to 60 picas long and 2 to 10 pica wide furniture to 140 picas long for lock-up.

The table is $64\frac{1}{2}$ " wide, $38\frac{1}{2}$ " deep and $38\frac{1}{2}$ " high. Prices and full description on request.



No. 14000T Lockup and Storage Table

AMERICAN WOOD TYPE MFG. CO. New York • Chicago • San Francisco

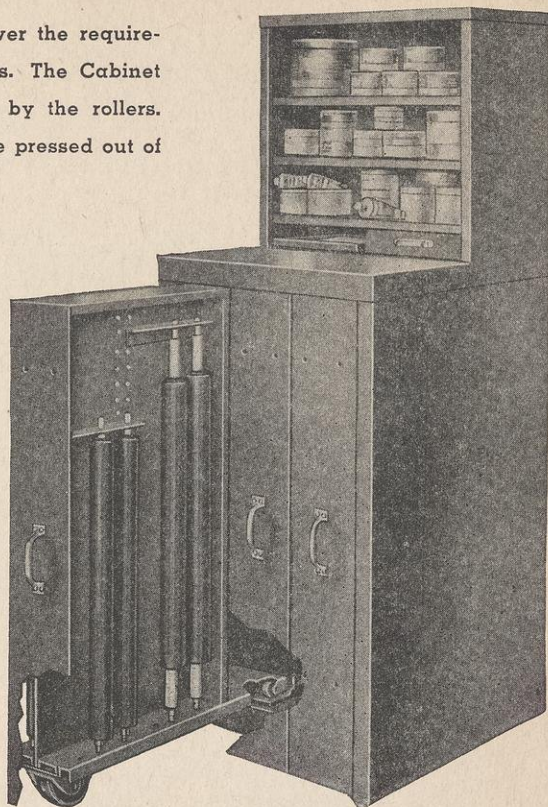
INK AND ROLLER CABINET

This Cabinet for the storage of rollers and ink will answer the requirements of pressrooms with platen and "B" Kelly presses. The Cabinet prevents rapid evaporation or absorption of moisture by the rollers. And as the composition can touch nothing it will not be pressed out of shape.

Cabinet is fitted with three dust-proof roller drawers. Each drawer has adjustable brackets to hold 12 rollers any size from 8x12 to "B" Kelly size. Each drawer is carried on light running wheels in front and back. A stop catch at the back prevents possibility of drawer being pulled too far and falling.

The Ink Storage compartment has room for 100 pounds of ink in 1- and 5-pound cans. Bottom compartment houses a black enamel ink mixing tray. Also in bottom compartment is a drawer with one large and four smaller compartments for storing parts and small tools.

Cabinet is beautifully finished in Olive Green baked enamel. Fitted with brass drawer pulls.



Dimensions: Floor space required, 23-25 inches. Height to working surface 39 inches. Working surface measures $22\frac{1}{4} \times 12\frac{3}{4}$ inches.

CUT STORAGE CABINET

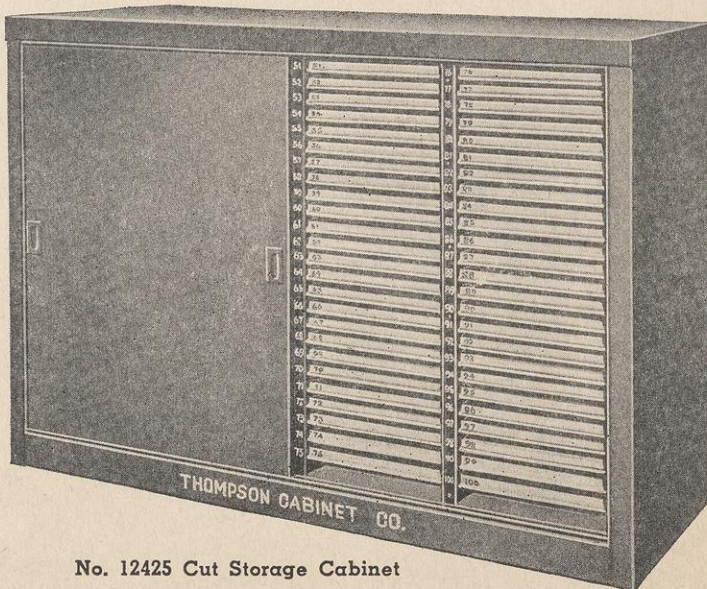
No. 12425 Steel Cut Storage Cabinet.

This is the finest and most practical cut storage cabinet made.

The cabinet has sliding doors to exclude any moisture. Cabinets may be stacked 2 or 3 high.

The cabinet holds 100 plated metal cut trays size $12\frac{1}{4} \times 18\frac{1}{4}$ ". Trays are the same thickness as galleys for easy proofing. The capacity of the cabinet is the same as a double tier, 48 case electro cabinet.

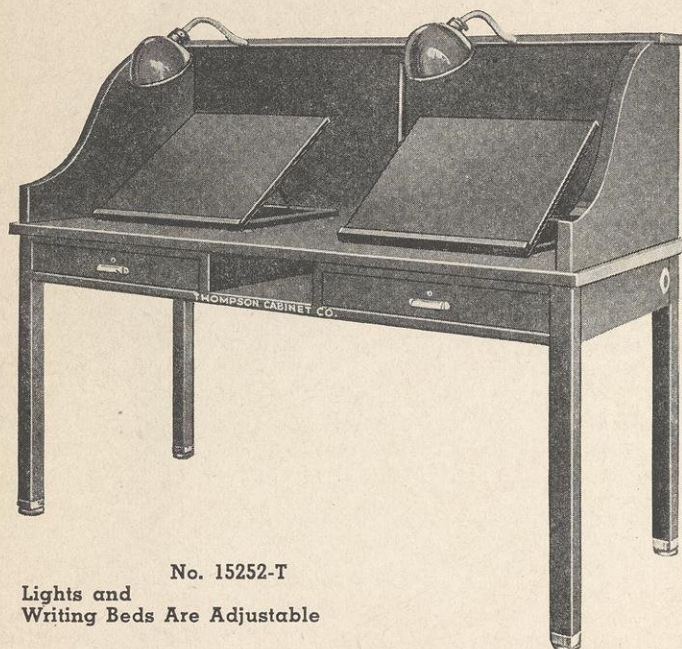
Size of cabinet: $58\frac{1}{4}$ " wide, $21\frac{1}{4}$ " deep and 40" high. Also made in half the size to accommodate 50 trays.



No. 12425 Cut Storage Cabinet

AMERICAN WOOD TYPE MFG. CO. New York • Chicago • San Francisco

PROOF READER'S DESK



No. 15252-T
Lights and
Writing Beds Are Adjustable

Here is a newly designed Proof Reader's Desk with curved ends. This Desk has a flat shelf at the top as it is used in conjunction with a mechanical overhead carrier in some of the larger metropolitan publishing plants.

The flat surface of the working top is covered with battleship linoleum. The two writing beds, each 19 x 18 inches, are adjustable in height to an angle of 45 degrees.

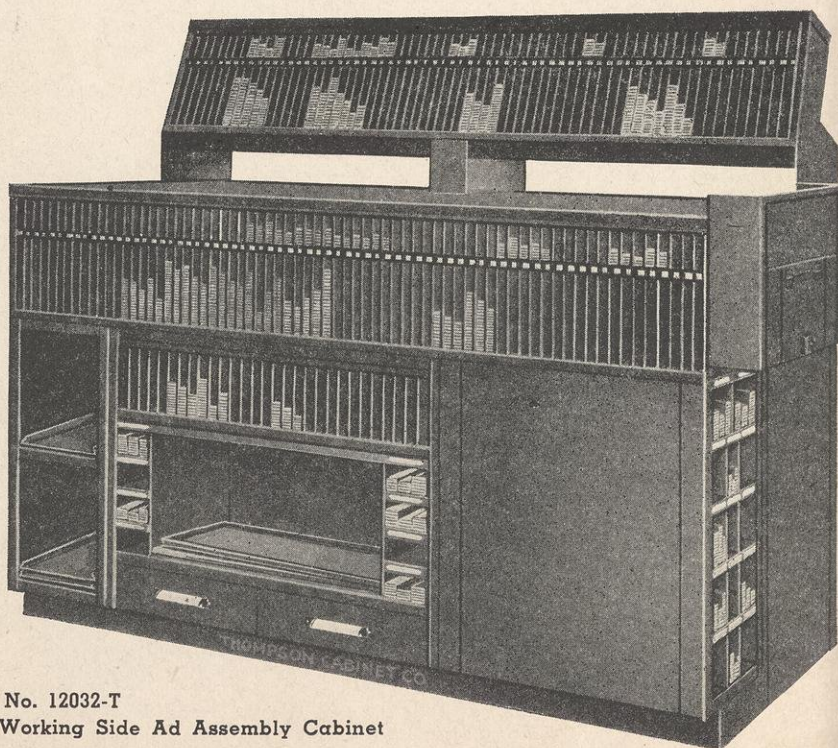
Each of the two drawers measures 20½ inches wide, 20 inches front to back, 2½ inches deep—inside measurements. Each drawer has brass pull, lock and key. Between the two drawers is an open bin.

AD ASSEMBLY CABINET

This cabinet is of unit design and embodies many valuable features. Accommodates about 2,000 pounds of cut-to-measure spacing materials, column rules and borders.

TOP: On the case side, set in highest part of top, is a case to accommodate column rules. There are 10 compartments for single column rules, 6 for double column, 2 for three-column, 2 for four-column, and one each for five-, six-, seven-, and eight-column rules.

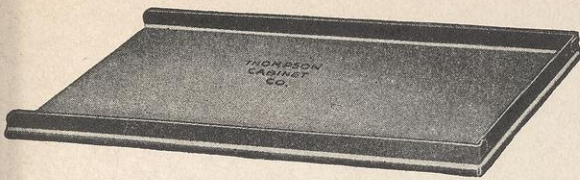
BODY: Cabinet is equipped with two tiers of 22 cases each of California Job Cases.



No. 12032-T
Working Side Ad Assembly Cabinet

AMERICAN WOOD TYPE MFG. CO. New York • Chicago • San Francisco

RUSTPROOF GALLEYS



Our galleys are Thompson make of Rustproof Steel. They are of uniform thickness with perfectly smooth finish. The neat corners are spot welded, the strongest most rigid construction available. These high quality galleys are offered at regular galley prices. Insist on Thompson Rustproof Galleys.

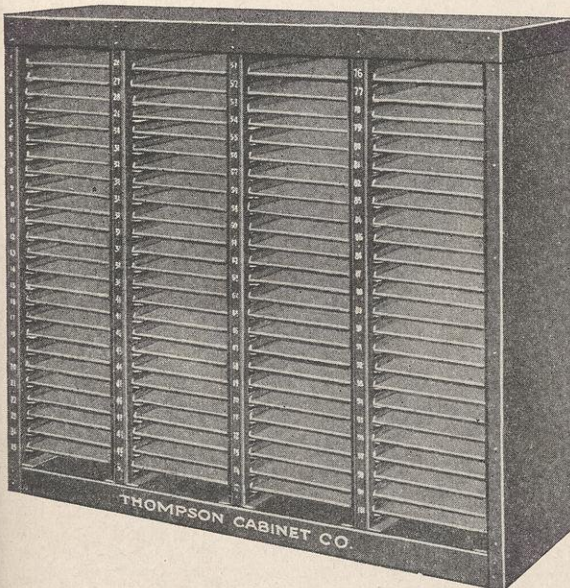
6 x10" Rustproof Galleys	3 1/2 x23 1/2" Rustproof Galleys	12 3/4 x23 1/2" Rustproof Galleys
8 3/4 x13" Rustproof Galleys	6 1/4 x23 1/2" Rustproof Galleys	15 x23 1/2" Rustproof Galleys
12 x18" Rustproof Galleys	8 1/2 x23 1/2" Rustproof Galleys	17 1/4 x23 1/2" Rustproof Galleys
10 x16" Rustproof Galleys	10 3/4 x23 1/2" Rustproof Galleys	18 3/4 x23 1/2" Rustproof Galleys

Thompson galleys are made of extra heavy rustproof steel and are guaranteed to be the finest on the market. Also a complete line of Mailing Galleys and Law Galleys. Special sizes made to order.

MINIMUM ORDER 10 GALLEYS OF ONE SIZE

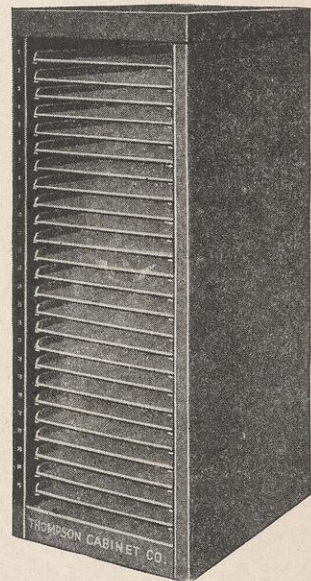
GALLEY CABINETS

Our steel galley cabinets are Thompson make. They are rigidly constructed and made to last a lifetime. These cabinets are guaranteed to be the finest that money can buy. All galley cabinets are made standard height, 38 1/2 inches. Cabinets are sold with or without galleys.



GALLEY CABINET No. 13540T

This Steel Galley Cabinet has a capacity of 100 galleys made twice as high to accommodate 200 size 8 3/4 x 13" galleys.



GALLEY CABINET No. 13537T

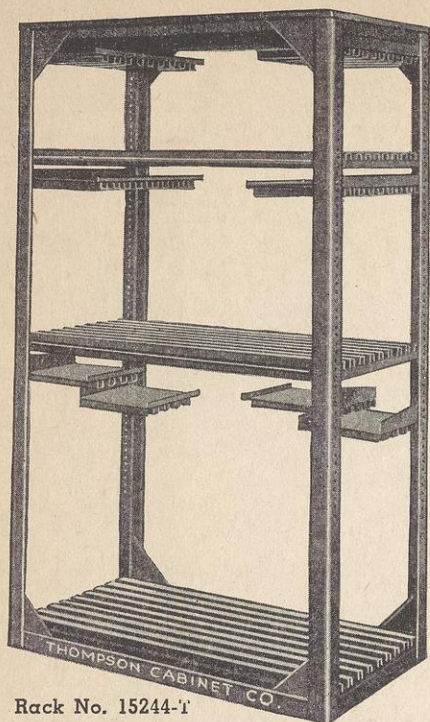
This cabinet has a capacity of 25 Job Galleys, size 12 x 18".

Floor space required 15 1/8 x 18 1/8".

OTHER STEEL GALLEY CABINETS

Galley Cabinet No.	Capacity	Floor Space Required	Galley Cabinet No.	Capacity	Floor Space Required
13537-T	25 12x18	18x38 1/2 in.	13543-T	50 12x18 in two tiers	29x19 1/2 in.
13538-T	50 8 3/4 x13 in two tiers	22x14 1/2 in.	13544-T	100 Single column in four tiers	23x25 in.
13539-T	50 6 1/4 x23 1/2 in two tiers	17x25 in.	13545-T	100 Double column in four tiers	34x25 in.
13540-T	100 8 3/4 x13 in four tiers	44x14 1/2 in.	13547-T	50 10x16 in two tiers	25x17 1/2 in.
13541-T	100 10x16 in four tiers	49x17 1/2 in.	13565-T	100 Triple column in four tiers	43x25 in.
13542-T	100 12x18 in four tiers	57x19 1/2 in.			

AMERICAN WOOD TYPE MFG. CO. New York • Chicago • San Francisco



Rack No. 15244-T

CHASE RACKS

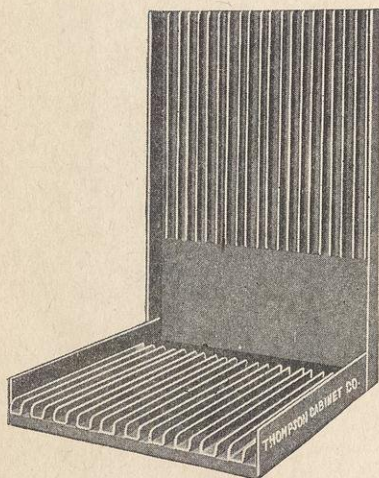
Thompson made all steel adjustable chase rack will accommodate any size chase. This versatile chase rack is needed in every plant since it can be adjusted to meet your requirements.

Rack holds forms securely so it is impossible for one form to rub against another.

Adjustability: Has steel channelled base platform and two movable steel channelled platforms. All top guides adjustable. Maximum height chase accommodates 56 $\frac{1}{4}$ inches. Adjustments for smaller chases made by means of platform and top guides than can be engages in bolt holes $\frac{3}{4}$ inch apart in rear and front of rack.

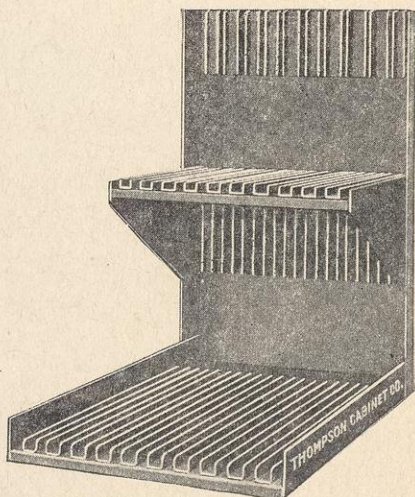
Floor space required 20x36 inches; height over all 63 inches.

OTHER CHASE RACKS



No. 15230-T Unit Chase Rack accommodates 10 cylinder pressform.

Dimensions: Width, 19 inches; depth, 25 inches; height, 30 inches.



No. 15240-T Unit Chase Rack.

Each deck platenpress chases up to 14 $\frac{1}{2}$ x22 inches.

Dimensions: Width, 19 inches; depth, 25 inches; height, 30 inches.

IRON TOPS

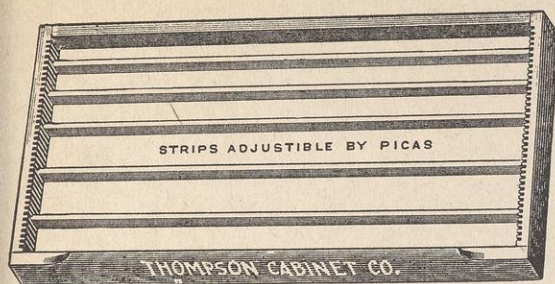
Cast Iron Tops Nos. 15679 to 15711 inclusive are 2 inches thick over all. Rabbits are 9/16 inch wide and 3/32 inch deep. All Cast Iron Tops are made by Challenge Machinery Co. These tops are for imposing tables.

Wt.	No.	Size Inches	Wt.	No.	Size Inches	Wt.	No.	Size Inches
370	15679	50x28	325	15694	39x31	635	15706	39x63
190	15684	27x31	400	15696	31x53	680	15707	65x39
285	15688	39x27	440	15700	35x51	815	15708	51x63
325	15690	47x29	420	15703	37x51	975	15710	75x51
575	15692	79x29	455	15704	51x39	1050	15711	78x54

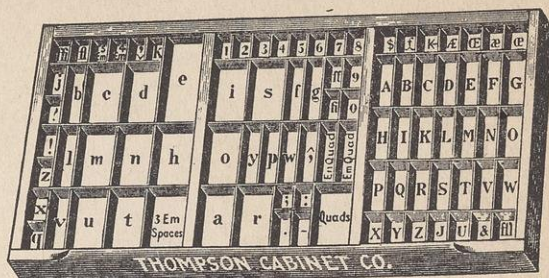
We can also furnish sizes not listed above.

AMERICAN WOOD TYPE MFG. CO. New York • Chicago • San Francisco

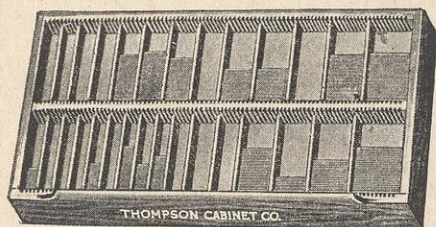
TYPE CASES



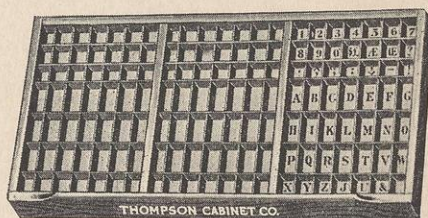
No. 12715 Wood-Type Case



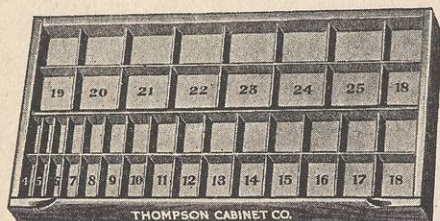
No. 12735 California Job Case



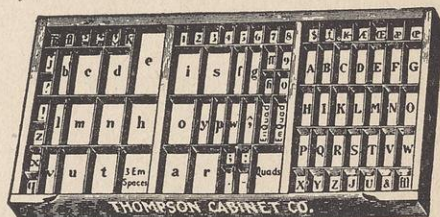
No. 12815 Adjustable Lead and Slug Case



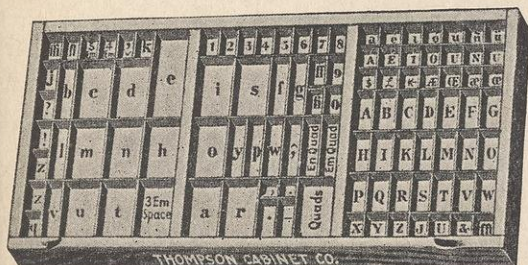
No. 12770 Triple Case



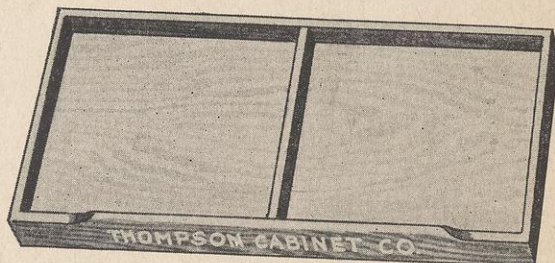
No. 12805 Morgan Lead and Slug Case



No. 12755 Double Yankee Job Case



No. 12740 Italic Job Case



No. 12706 Blank Case

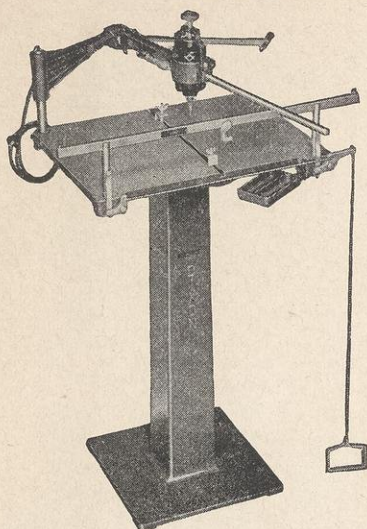
Our type cases are all Thompson made with Masonite bottoms and reenforced joints. Due to lack of space we can only show a few of the more popular cases.

We can also furnish two-third size and quarter size cases. Minimum order accepted, 3 cases.

AMERICAN WOOD TYPE MFG. CO. New York • Chicago • San Francisco

PRINTERS' EQUIPMENT

DIXON ROUTER



The Dixon Router and Type-high Planer is made on the same principle as the machines costing several hundred dollars. It is constructed for accuracy, speed, and is capable of routing all materials used by the printing trade. It is machined to micrometer measurements and made of the very best material, which puts it in the class of the very highest grade machinery, capable of giving years of dependable service.

FOOT POWER PERFORATORS



Rosback Foot Power Perforator is the original Round Hole Perforator, thousands of which are in use. The punches in this machine are of the highest quality. They will not break or bend. The machine and its dies are guaranteed for at least 5 years. Made in 4 sizes: 15", 20", 24" and 28". Write for prices and illustrated circular.

Ask for information concerning any Rosback machine including the Hand Power Perforators and Punching Machines.



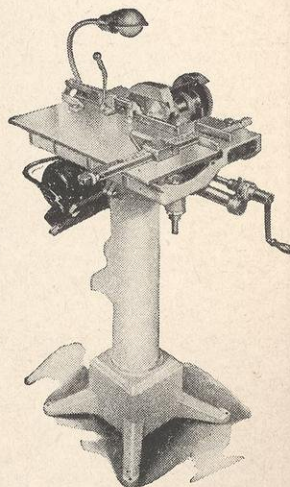
The Pioneer Router is very handy:

1. For type high planing.
2. Removing waste metal.
3. Cutting tints and engravings.

This router has a Universal motor for A.C. or D.C. and can be plugged into any light socket.

COST CUTTER SAWS

Cost Cutter Saw Trimmers will function most profitably in your composing room. They are noted for the fine engineering principles embodied in their construction—many unique labor-saving features—speed—simplicity—economy.



Cost Cutter Saws are sold on an iron-clad money-back guarantee within 30 days if you are not fully and completely satisfied with their operation. And still more, you have another guarantee, one for 5 years against defective materials and workmanship.

Cost Cutter Saws are the fastest, most accurate and economical saws on the market today. They are used and endorsed by leading plants in the United States and most foreign countries. If you want the best saw trimmer investment, buy a Cost Cutter. Write for detailed information.

AMERICAN WOOD TYPE MFG. CO. New York • Chicago • San Francisco

WOOD AND METAL JIG SAW

Printers, Electrotypers, Photo Engravers make your own mortises. Cut in tight places. This sturdy heavy duty jig saw has been developed for accurate and dependable work. Will pay for itself in six months. Made and guaranteed by the world's largest manufacturers of woodworking machinery.

This new 24" Jig Saw with direct-motor drive, "finger-tip control" speed, new type, instantly adjustable blade tensioner and many other superior features has set an entirely new standard of jig saw performance. One demonstration will convince you that it has out-moded the belt-and-pulley drive and the fixed-blade-tension head and—at the same time provided many new features which have never before been available in any jig saw, at any price.

SPECIFICATIONS

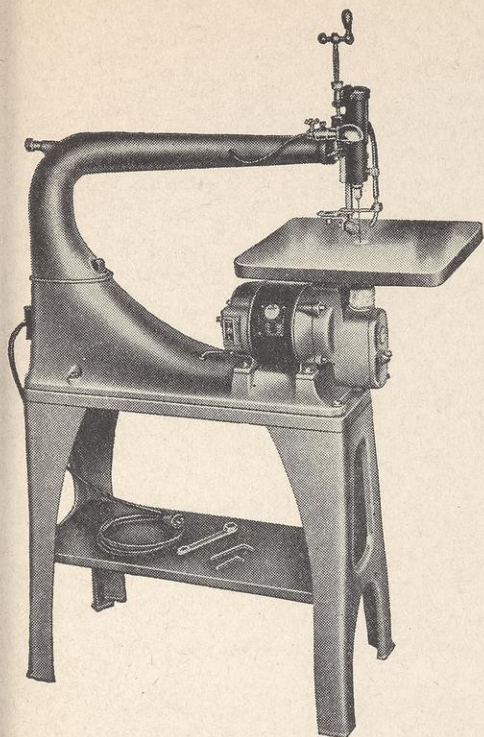
New type driving mechanism is built in combination with motor providing direct drive. No belt or pulleys. Connecting rod is drop-forged, bronze-brushed. Crank pins are hardened and ground steel. Splash system of oiling.

Throat capacity 24". Normal capacity upper vise to table 2 3/4" with 6" blades. Extra capacity, if longer blades are used.

Table is 15" x 14", machined cast-iron heavily ribbed. Soft metal insert in table around blade. Table tilts to 45°, has graduated quadrant.

New type head has adjustable blade tensioner. A few turns of the handle changes spring tension for each size of blade.

Blade vises have positive locks and take plain end blades up to 1/8" wide. Roller guide accommodates various sizes of blades. Spring hold-down prevents work being lifted on up-stroke.



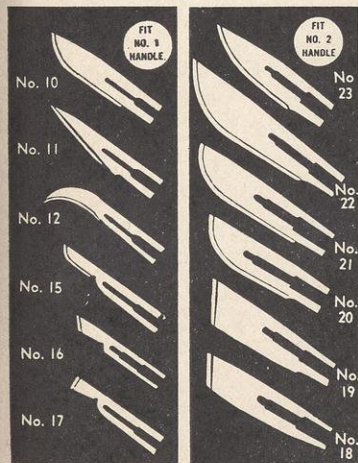
Height overall (with stand 54") without stand 29". Approx. shpg. wgt. with stand 197 lbs. Jig saw sold complete as illustrated including overhead light, tools and 18 blades.

XACTO KNIVES

Here's a new kind of knife that's really practical. Xacto knives are controlled as easily as a pencil point for the most delicate work.

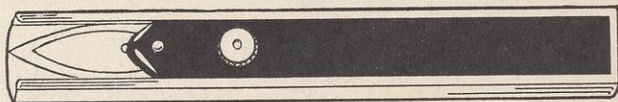
Xacto blades are made of surgical steel and remain sharp longer than any make-ready knife. Practical uses are for: MAKEREADY, RUBBER ENGRAVING, ART WORK, LITHOGRAPHY, MAT CUTTING, STRIPPING, SHOW CARDS, MODEL KNIFE, ETCHING KNIFE, STENCIL KNIFE, WOOD CUTTING.

Xacto blades may be purchased in any quantity.



Blades shown are half actual size.

No. 4—has fountain pen clip—1 blade



No. 5—Heavy Duty—3 heavy blades



No. 2—Ordinary Cutting—6 blades—Style 5 to 18



No. 1—For Fine Cutting—6 blades—Style 10 to 16



AMERICAN WOOD TYPE MFG. CO. New York • Chicago • San Francisco

PRINTERS' TOOLS

STEEL TAPE RULES



With Printers' Measurements
72" long in a 1 7/8" case



These Flexible Rigid Steel Tape Rules are very handy for compositors, pressmen, advertising men, newspaper men and bindery workers. They have finely etched markings.

No. 100 Printers' Tape Rule marked picas and nonpareils and 72" to 16ths.

Price \$1.50 each

No. 200 Printers' Tape Rule marked on face in picas and nonpareils and 72" to 16ths. Back is marked in agates.

Price \$1.75 each

Less 10% discount on 6.

HAND NUMBERING MACHINES



654321

Fac-Simile Impression

American Hand Numbering Machines are the finest values at the price. They are all steel and can be adjusted to number consecutively, duplicate, triplicate and repeat.

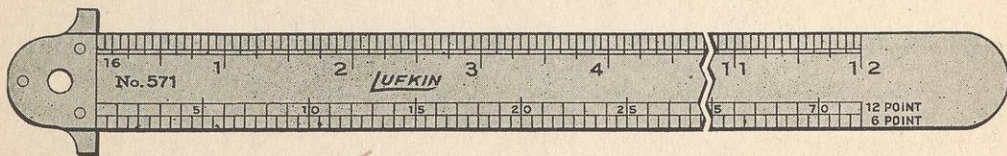
The figures are clear cut and easily read. They are made from long wearing, specially designed steel type.

No. 110 — 5 wheels

No. 111 — 6 wheels

Write for complete information on 50 other models of hand or press numbering machines.

PRINTERS' STEEL TYPE GAUGES OR RULES



Printers prefer to work with Steel Type Gauges. These are made of the finest tempered rule steel and are flexible. The markings are sunken and in black to be easily read.

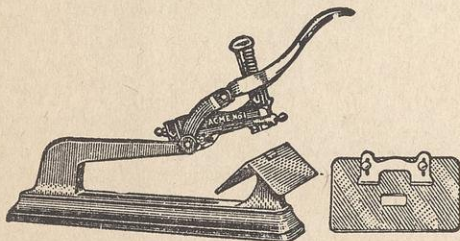
No. 571: Marked 12 inches to 16ths and in picas and nonpareils (6 and 12 pt.) on lower edge.

No. 573: Newspaper Rule, 24 inches to 16ths, agates and nonpareils.

No. 572: Marked 12 inches to 16ths and 168 agates on lower edge. Opposite side is marked in 8 and 10 pt. on upper edge, picas and nonpareils (6 and 12 pt.) on lower edge. For newspaper work.

ACME STAPLERS

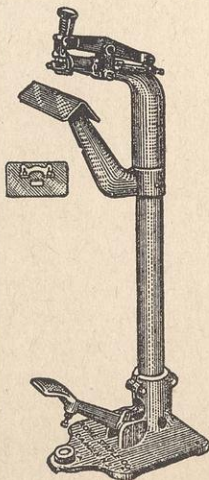
HAND POWER STAPLER



Acme No. 2 Hand Power Stapler with interchangeable saddle back and flat tables included at no extra charge. This is a substantial machine weighing 19 lbs. It has a 12" reach. Often one job will pay for the machine.

Staples and other model staplers may also be had.

FOOT POWER STAPLER

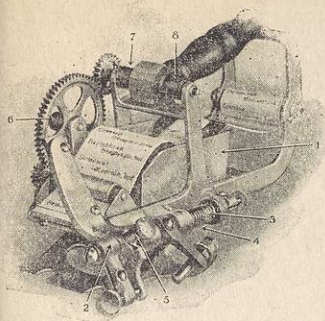


Acme No. 9 Foot Power Stapler with interchangeable saddle back and flat tables included at no extra charge. It is a heavy duty, sturdy machine built for production work yet is priced at a fraction of similar machines. The machine weighs 85 lbs. It turns out booklet and catalog work swiftly and easily with its velvety smooth foot power action. Thoroughly guaranteed.

AMERICAN WOOD TYPE MFG. CO. New York • Chicago • San Francisco

PRINTERS EQUIPMENT

WING HAND MAILER



The New Wing Aluminum Hand Mailer is the latest development in mailers. It cuts and places the slips perfectly and removes excess paste.

The instrument is light weight and easily handled. Machine weighs 2 lbs.

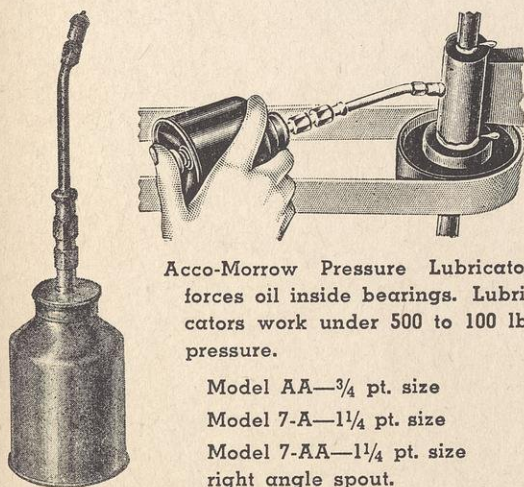
- No. 1 Mailer—1 $\frac{7}{8}$ " size
- No. 2 Mailer—2 $\frac{1}{4}$ " size
- No. 3 Mailer—2 $\frac{5}{8}$ " size

WELDED STEEL CHASES



Electric Welded Steel Chases are much stronger and in every way superior to the old cast iron chases. They are made in any size with inside bars if desired. Write for low prices on your requirements. Chases are completely guaranteed.

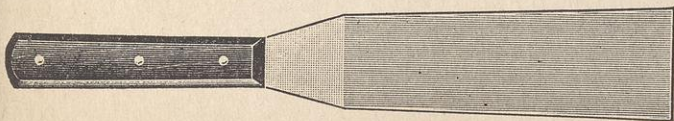
MORROW PRESSURE OIL CAN



Acco-Morrow Pressure Lubricator forces oil inside bearings. Lubricators work under 500 to 100 lb. pressure.

- Model AA— $\frac{3}{4}$ pt. size
- Model 7-A—1 $\frac{1}{4}$ pt. size
- Model 7-AA—1 $\frac{1}{4}$ pt. size right angle spout.

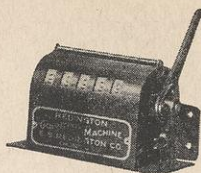
INK KNIVES



These are standard Lamson Printers' Ink Knives. Guaranteed.

- 6" Blade
- 8" Blade
- 10" Blade
- 12" Blade

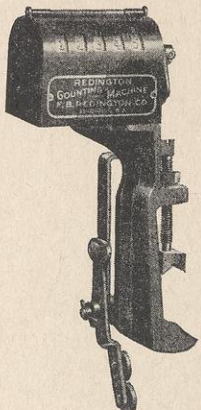
REDINGTON COUNTER "A"



Model "A" Redington Counter is the standard counter for cylinder presses, embossers, stampers or any other automatic machine. Counts to 100,000 at any speed to 400 per minute. May be set to zero any time.

PRICE See Price List
Add 25c for celluloid window

REDINGTON COUNTER "D"



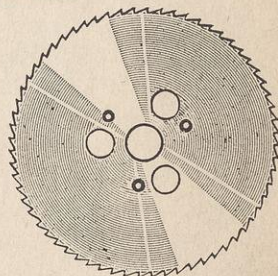
Model "D" Redington Counter for Chandler & Price and Kluge Presses. None better made—of steel parts throughout. Easily read figures.

Other counting machines:
"H" for Miller High Speed.
"K" for Kelly Presses.
"M-2" for Multicolor.
"American" for Miehles.

Prices on request.

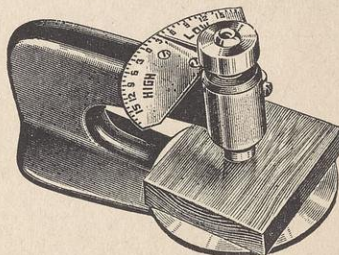
SAW BLADES

Simonds Saw Blades, 6 inches in diameter, are carried in stock. They have trimmer holes and will fit most printers' saws. Blades are universal (for wood or metal) and have 64 teeth.



Other famous Simonds Blades may be furnished.

KEMPER TYPE HIGH GAUGE



The Kemper Type High Gauge is the most useful type high gauge on the market. It can measure to the center of cuts up to 8 $\frac{1}{2}$ " wide (not only on the edges like pocket gauges). Shows at a glance exactly how many thousands of an inch a cut is high or low. Circular on request.

AMERICAN WOOD TYPE MFG. CO. New York • Chicago • San Francisco

PRINTERS' SUPPLIES

WOOD MALLETS



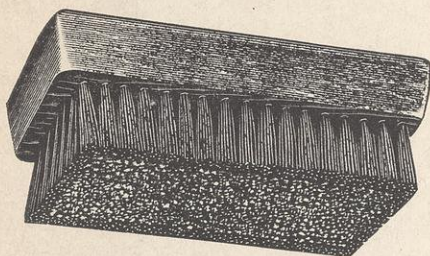
- Small Mallet size $2\frac{1}{2} \times 4\frac{1}{2}$ "
- Medium Mallet size $2\frac{3}{4} \times 5$ "
- Large Mallet size $3\frac{1}{2} \times 6$ "

RAW HIDE MALLETS

All Raw Hide Mallets are made from the best quality Buffalo Hide.

Size No.	Diameter of head	Length of Head	Weight
3	$1\frac{3}{4}$ "	$3\frac{3}{8}$ "	8 oz.
4	2"	$3\frac{1}{2}$ "	10 oz.
5	$2\frac{3}{4}$ "	$4\frac{1}{4}$ "	22 oz.
6	$2\frac{3}{4}$ "	$4\frac{3}{4}$ "	24 oz.

BENZENE BRUSHES



Our Benzene Brushes are all made by R. Hoe & Co. These are guaranteed to be the finest on the market.

- Plate Brush (fine wire center).
- Perfection Brush long hair.
- Perfection Brush short hair.



JUSTRITE BENZENE CANS

Approved, inspected and labeled by National Board of Fire Underwriters and built according to their standards.

Size	Weight
• 1 Pint Can	2 Lbs.
• 1 Quart Can	$2\frac{1}{2}$ Lbs.
• 2 Quart Can	$3\frac{1}{2}$ Lbs.
• 1 Gallon Can	$4\frac{1}{2}$ Lbs.
• 2 Gallon Can	7 Lbs.
• 3 Gallon Can	8 Lbs.
• 5 Gallon Can	10 Lbs.

SAFETY BENZENE CAN

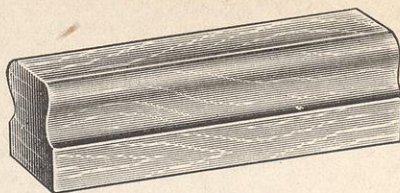


Made of heavy brass solidly constructed and well finished. These cans have spring nozzles.

Pint size

Quart size

WOOD PLANERS



- Midget Planer $1\frac{3}{4} \times 3$ ".
- Ordinary Planer $3\frac{1}{4} \times 6$ ".
- Ordinary Planer $3\frac{1}{4} \times 8$ ".
- Pressman's Planer $3\frac{1}{4} \times 8$ ".
- Proof Planer $3\frac{1}{4} \times 8$ ".

Planers are furnished with or without leather top. Leather tops are 15c extra.

JUSTRITE OILY WASTE CAN



Approved and inspected. Reduce fire hazard.

No.	Capacity	Weight
1-A	6 Gallon	9 Lbs.
2-A	8 Gallon	11 Lbs.
3-A	10 Gallon	13 Lbs.
5-A	14 Gallon	15 Lbs.

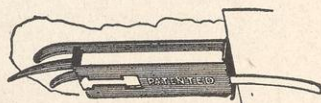
BELLOWS



Bellows are useful for blowing out dust and dirt from type cases and places in presses that cannot be reached with a cloth or a brush.

Size 20"

GAUGE PINS



Megill Spring Tongue Pins
Megill Spring Tongue Pins
Megill Perfect Register Gauges
Megill Double Grip Gauges
Double Grip for Miller Feeder
Grove "No Slip" Gauge Pins

ROUTER BITS

Unequalled for routing plates of all kinds.



Style "A" for Electros, Stereos, soft metals and wood.



Style "B" for Copper, Zinc and hard metals.

	Sizes	
$1/32$ "	$1/8$ "	$5/16$ "
$1/16$ "	$3/16$ "	$3/8$ "
$3/32$ "	$1/4$ "	$1/2$ "

AMERICAN WOOD TYPE MFG. CO. New York • Chicago • San Francisco

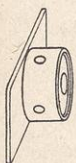
PRINTERS' SUPPLIES

TWEEZERS



No. 34	3" long
No. 47	3½" long
No. 52	4½" long
No. 152 Block Style	4½" long

ROUSE REGISTER QUOINS



No. 2 will expand 24 points, fits into a space of 36 points.



No. 1 will expand 10 points, fits into a space of 18 points.

Rouse Register Quoins are invaluable to lock up forms where ordinary quoin space is limited.

TYMPAN STABBER



This is very handy tool for locating the position of overlays. It makes two small cuts at right angles to each other through the tympan sheet.

SAFTYSLIDE MAKEREADY KNIFE



This fine makeready knife slides into a handy case and is absolutely safe. Fits into your pocket. Blade made of surgical steel and may be replaced at 10c each.

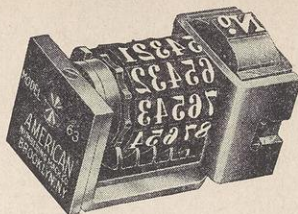
SPHINX PAD-TEX



is not affected by weather conditions and is not inflammable. Supplied in red and white.

A modern, latex cement for padding and general book-binding work. It has exceptional strength and flexibility and is supplied in ready for use form. Can be thinned with water if necessary and due to its great coverage is most economical. PAD-TEX spreads easily; dries in thirty minutes and does not chip or peel. It

PRESS NUMBERING MACHINES



No. 54321

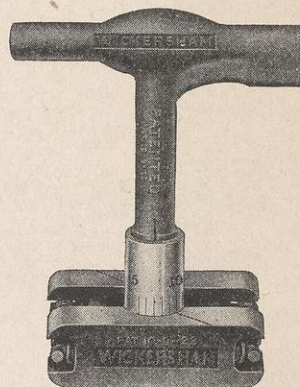
Fac-Simile Impression

Every kind of Press Numbering Machine can be furnished. Special machines are made to your requirements. Machines can be furnished with skip wheels. There are machines to number backward, to duplicate, triplicate, etc. Your old machine can be given in trade.

WICKERSHAM QUOINS

Wickersham Quoins are one piece. Over 13,000,000 have been sold. They will not loosen or slip.

Quoins lock instantly by one turn of the key. Send for prices and circular. Made in three widths.



No. 0	1½" when closed
No. 1	5/8" when closed
No. 2	3/4" when closed

MICROMETER



This instrument will measure up to 1 inch and is accurate to 1 thousandth of an inch.

Useful for measuring Lino slugs, Ludlow slugs, rules and cuts.

SPHINX PASTE



A steel grey, jelly-like make-ready paste that has been the first choice of printers and the allied trades for over half a century. A positive necessity in every pressroom. Keeps soft and free from mould; does not swell the packing or wrinkle paper; no risk of lumps getting into the packing or overlays and battering the form.

Has no bad odor, will not injure the hands and is not inflammable. Excellent for use in the mailing room and for general pasting work.

AMERICAN WOOD TYPE MFG. CO. New York • Chicago • San Francisco

PLATE MOUNTING SUPPLIES

CENTER PUNCH



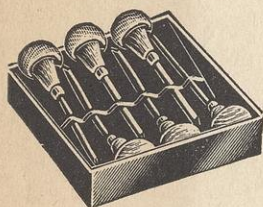
Made of hardened steel.

NAIL SET



Made of hardened steel.

ENGRAVING TOOLS

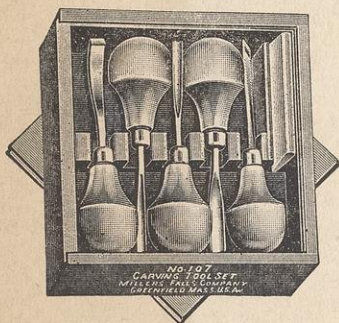


Tools are made by Mueller, and are guaranteed to be the finest obtainable.

Engraving tools are made in sets of 6 assorted tools and are neatly packed in a special box.

These tools are valuable for working on metal cuts and electros. They are also good for engraving in Endwood and Boxwood.

LINOLEUM ENGRAVING TOOLS



A set of 5 tools and sharpening stone packed in a wooden box.

Tools are forged and heat treated to insure long life. These tools are excellent for engraving in Linoleum and soft wood.

STA-FAST CEMENT

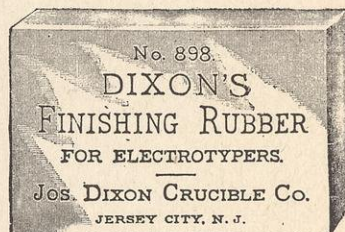


Money Back Guarantee

Printers, Photo-Engravers and Electrotypers throughout the United States have discovered that our STA-FAST CEMENT will hold the plate to its base as if it were a solid block.

STA-FAST CEMENT is now packed in large tubes. No waste—easy to apply. A single tube will mount about 50 small cuts.

FINISHING RUBBERS



These rubbers are made for rubbing plates to polish and remove fine scratches or dried ink marks. Made for half tones and Electrotypers.

MOUNTING NAILS

We carry in stock $\frac{5}{8}$ and $\frac{1}{2}$ " nails for mounting cuts. These nails are of standard make. Will fit nailing machines.

1 lb. box.....

2 lb. box.....

5 lb. box.....

Also sold in 25, 50 and 100 lbs. kegs. Write for price.

MAGNETIC PLATE MOUNTER



of the Magnetic Plate Mouter it is possible to securely position a nail in a space otherwise inaccessible without risk of damage to the plate or injury to the fingers.

This magnetized plunger draws the small nail within the hardened point of the tool and holds it there. The nail is driven straight and true into the block by a hammer blow on the top of the tool. By the use

December 1938

PRICE LIST

Of Printing Supplies - Equipment - Furniture - Machinery



American Wood Type Mfg. Co.

270 Lafayette Street, New York City -- Tel. CAnal 6-2310

New York, N. Y.

Buyer of Equipment & Supplies
Printing Plant

Dear Sir:

We present our Price List of products shown in our catalog No. 39. Save it. You will refer to it frequently. From these prices quantity discounts are given, in many cases. Prices are subject to change without notice.

We are especially equipped to handle out of town mail order business. Our large stock assures fast service. Make us your supply house whether you are one mile or a thousand from us.

To speed shipment, payment with order or C.O.D. is suggested. Regular credit terms are extended to rated concerns and those with satisfactory credit references. If desired time payments can be arranged on heavy equipment.

Consult us if we can help you. We want your business and we appreciate it through good service and fair treatment.

May we serve you?

Very truly yours,

AMERICAN WOOD TYPE MFG. CO.

AMERICAN WOOD TYPE MFG. CO. -- 270 Lafayette Street, New York City

AD ASSEMBLY CABINETS; see Cabinets		CANS	
APRONS, Printers	1.00	Benzene, Success, Brass	
BAND SAWS; see Saws		Pint	1.50
BELLOWS, Cylinder 20"	2.50	Quart	1.75
BENZENE BRUSHES; see Brushes		Benzene, Justrite	
BENZENE CANS; see Cans		Pint	2.00
BITS, ROUTER —		Quart	2.25
Specify for wood or metal		1/2 Gallon	2.50
1/16"	.50	1 Gallon	3.00
1/8"	.50	3 Gallon	4.50
1/4"	.50	5 Gallon	5.50
3/8"	.70	Oil, Morrow Pressure	
BLADES, Saw		AA	3.00
Regular 6" trimmer comb	4.00	7A	3.40
Other sizes on request		7AA	3.75
BLOCKS, Drilling Machine		Oily Waste, Justrite—Foot Lever	
Dozen	1.00	6 Gallon	4.00
BLOCKS, Basswood and Maple, Engraving. Prices on request.		8 Gallon	4.50
BRASS RULE; see Rule		10 Gallon	5.00
BRUSHES		14 Gallon	6.00
Perfection, large size	.85	CASES, Type, Wood, Lip Front	
Perfection	.75	Adjustable Lead and Slug	2.25
Oval Back	.65	Blank	1.15
Plate, Brass Wire	.90	California Job	1.80
Kelly Curve	1.25	Double Yankee Job	2.25
CABINETS		Italic Job	1.80
Type		Morgan Lead and Slug	2.25
No. 12210T	65.00	Triple	2.25
No. 12006AT	164.00	Wood Type	1.70
No. 12001T	77.00	Cabinet fronts or steel fronts add	.22
No. 12007T	170.00	CEMENT	
Cut Storage		Sphinx Pad-Tex	
No. 1245T with 100 trays	137.00	Pint	.75
No. 12426T	120.00	Quart	1.25
Ad Assembly		Gallon	4.00
No. 12032T	360.00	Sta Fast for mounting cuts	
Galley		1/4 lb. Tube	1.00
No. 13537T	16.50	Pint	3.00
No. 13538	20.00	Quart	5.00
No. 13539	26.00	Gallon	15.00
No. 13540	25.00	10% Discount on 3 Tubes	
No. 13541	31.00	CENTER PUNCH; see Punch	
No. 13542	34.00	CHALLENGE PAPER DRILLS; see Drills	
No. 13543T	33.00	CHASES, Electric Welded all Steel	
No. 13544	35.00	8"x12"	6.00
No. 13545	32.00	12"x18"	8.00
No. 13547	30.00	14"x22"	11.00
No. 13565	36.00	CHASE RACKS; see Racks	
Ink and Roller Steel	80.00	COMPOSING STICKS; see Sticks	
		CORNER MACHINES; see Machines	

AMERICAN WOOD TYPE MFG. CO. -- 270 Lafayette Street, New York City

COUNTERS, Remington Press		FILES, Newspaper	
Model A Cylinder	6.25	Prices on request	
Model D Job	6.75	FINISHING RUBBERS; see Rubbers	
CUT STORAGE CABINETS; see Cabinets		FRAMES, Page	
CUTTERS, PAPER		Prices on request	
Diamond, Power		FURNITURE, Challenge Iron	
30½"	740.00	Font A-4, 125 pieces	28.00
34½"	805.00	Font A, 392 pieces	95.00
36½"	900.00	Font M, 98 pieces	23.75
Challenge Lever 265-26½"	270.00	Font S, 280 pieces	131.25
Advance Pony-Stand Extra		Other fonts and sorts sold	
16¼"	93.00	Prices on any size upon request	
19⅜"	116.00	No. 25 Font	28.50 — Cabinet 18.00
CUTTERS, Lead, Rouse		FURNITURE, Labor Saving Fonts, Wood	
No. 10	16.50	No. 4 Font	16.50 — Cabinet 9.50
No. 20	25.75	No. 10 Font	7.50 — Cabinet 6.50
No. 30	29.75	No. 12 Font	15.00 — Cabinet 9.25
No. 40	35.75	No. 16 Font	38.50 — Cabinet 32.00
Lino-Slug Clippers	24.75	No. 17 Font	69.50 — Cabinet 37.50
Ludlow Slug Clippers	25.75	No. 13705 Font	31.00 — Cabinet 29.00
Slug Clippers—no gauge or shelf	4.50	No. 13715 Font	69.00 — Cabinet 41.00
CUTTING STICKS, Rock Maple; see Sticks		No. 13725 Font	100.00 — Cabinet 55.00
CYLINDER BELLOWS; see Bellows		FURNITURE, Labor Saving Wood	
DESKS, Proof Readers		See Prices in Catalog	
No. 15252T Thompson	137.00	FURNITURE, Wood — ⅝" per yard	
DRILLS, Challenge Paper		6 point	.02¾
Prices on request		9 point	.03
DRILLING MACHINE BLOCKS; see Blocks		12 point	.03
ENGRAVING TOOLS; see Tools		18 point	.03½
EQUIPMENT, Stereotype		2 pica	.05
Caster, Speed Line Junior	22.50	3 pica	.06½
10"x14"	35.00	4 pica	.08
12"x18"	65.00	5 pica	.10
Full Page, Flat		6 pica	.11
(prices on request)		8 pica	.13½
Full Page, Automatic		10 pica	.17
(prices on request)		12 pica	.22
Scorcher, Speed Line	20.00	15 pica	.30
10"x15"	24.50	20 pica	.40
Humidor, Speed Line		24 pica	.45
12"x20"	14.50	6 point Slug High ¾"	.03¼
12"x24"	19.50	12 point	.03¾
Matrix Moulder, Speed Line		18 point	.04¼
Senior (single gear)	89.00	2 pica	.06
Junior	45.00	3 pica	.08
		GALLEYS	
		Rustproof Steel	
		10 - 19	20 - 49
		6" x10"	.25
		8¾" x13"	.29
		10" x16"	.39
		12" x18"	.45
		3½" x23½"	.29
		6¼" x23½"	.37
		8½" x23½"	.45
		10½" x23½"	.60
		10 - 19	.24
		20 - 49	.38
		50 & over	.32
			.37
			.25
			.29
			.37
			.42
			.56
			.47

AMERICAN WOOD TYPE MFG. CO. -- 270 Lafayette Street, New York City

GALLEYS		KNIVES	
Mailing, Law and Cadmium Plated		No. 1, 2, 4, 5, Xacto with blades	1.00
Prices on request		Extra blades, each	.10
Double Wall		Safteyslide Makeready	.50
8 3/4" x13"	.37	Makeready	.35
12" x18"	.59	Paper Cutter (on request)	
6 1/4" x23 1/2"	.49	Trimmer, set of 3	1.50
Brass Make-Up		LEAD CUTTERS, Rouse; see Cutters	
8 1/4" x13"	4.50	LEADS AND SLUGS	
10" x16"	5.40	Prices on request	
12" x18"	6.35	LOCKS, Galley, Challenge	
14" x21"	7.90	2" —dozen	1.80
Other sizes on request		3 3/16" —dozen	1.95
GALLEY CABINETS; see Cabinets		6" —dozen	2.50
GALLEY LOCKS; see Locks		Discount on Quantity	
GAUGE PINS; see Pins		MAKE READY PASTE; see Paste	
GAUGES, Rouse Brass Type		MAILERS, Aluminum New Wing	
Specify 6, 12 pt., and inches or 6, 12 pt. and picas		No. 1—1 7/8" size	22.00
8"	.80	No. 2—2 1/4" size	26.40
12"	1.00	No. 3—2 5/8" size	30.80
18"	2.10	MACHINES, Mitering	
22"	2.70	Rouse Hand	
GAUGES, Steel, 12" Type		Panameric	31.00
6 and 12 pt. and inches	1.20	Rouse Hand	39.75
6 and 12 pt. inches, and agates	1.40	With extension Gauge	48.50
GAUGES, Type High		Rouse Power Miterer	
Pocket	1.50	Cabinets Model	265.00
Challenge	1.25	Pedestal Model	250.00
Kemper	9.50	Bench Model	230.00
HAND NUMBERING MACHINES; see Machines		Roto Miterer	164.00
IMPOSING TABLES; see Tables		MACHINES, Hoerner Type High	50.00
JIG SAWS; see Saws		MACHINES, Numbering	
JOB STICKS, Rouse; see Sticks		Hand—5 action	
KEYS, Quoin; see Quoins		5 wheel	7.50
KNIVES, Lamson Ink		6 wheel	8.50
Square End		Press—American, Wetter, Force, Roberts	
6" blade	1.25	5 wheel	12.00
8" blade	2.10	6 wheel	14.00
10" blade	2.80	With slide plunger, extra	1.00
12" blade	3.95	With lock pawl, extra	4.00
Spatula (round end)		Less 5% on 6, less 10% on 12. Trade in allowance on old machines. Other models and parts sold.	
4" blade	.60	MACHINES, Type High, Hacker	
6" blade	.90	Prices on request	
8" blade	1.15	MACHINES, Cornering	
10" blade	1.75	Prices on request	

AMERICAN WOOD TYPE MFG. CO. -- 270 Lafayette Street, New York City

MALLETS		PLANERS, Wood	
Wood		1 3/4" x3"	.30
4 1/2" Long Head size	1.00	3 1/4" x6"	.65
5" Long Head size	1.00	3 1/4" x8" Pressmans Lea Top	.70
6" Long Head size	1.20	3 1/4" x8" Leather Top	.85
Raw Hide		3 1/4" x8" Proof Leather Top	1.25
3 3/8" Long Head size	1.25	3 1/4" x8" Kelly Press	1.00
3 1/2" Long Head size	1.50	PRESS BOARDS	
3 1/4" Long Head size	3.00	Prices on request	
4 3/4" Long Head size	3.50	PRESS COUNTERS; see Counters	
MAGNETIC PLATE MOUNTERS; see Mounters		PRESSES, Proof	
MAKEUP RULES; see Rules		Vandercook	
MICROMETERS		No. 099	53.00
Lufkin Precision No. 1911	1.25	No. 01	85.00
	7.25	No. 03	145.00
MITERING MACHINES; see Machines		No. 3	485.00
MOUNTING NAILS; see Nails		Challenge Series C	
MOUNTER, Magnetic Plate	1.50	No. 1418C	99.00
NAILS, Mounting — 5/8" or 1/2"		No. 1425C	135.00
1 lb.	.50	No. 2025C	225.00
2 lbs.	.90	Stands are Extra	
5 lbs.	2.00	PRESS NUMBERING MACHINES; see Machines	
25 lbs.	8.75	PRESS TAPE & FOLDER RED LINE; see Tape	
NAIL SET; see Set		PRINTERS APRONS; see Aprons	
NEWSPAPER FILES; see Files		PRINTERS TRIMMER SAWS; see Saws	
NUMBERING MACHINES; see Machines		PROOF PRESSES; see Presses	
PADDING CEMENT; see Cement		PROOF READERS DESKS; see Desks	
PAGE FRAMES; see Frames		PUNCH, Center	.25
PAPER CUTTERS; see Cutters		PUNCH, Paper	
PAPER DRILLS; see Drills		Sieber Hand	
PAPER PUNCH; see Punch		Junior	22.00
PASTE, Makeready		Regular	30.00
1 pint	.35	Roscoe Foot Power	
1 quart	.60	QUOINS	
1/2 gallon	.90	Challenge	
1 gallon	1.60	No. 0—dozen	1.35
PERFORATORS		No. 1—dozen	1.35
Prices on request		No. 2—dozen	2.50
PINS, Gauge		Discount on Quantity	
Grove, dozen	1.00	Challenge High Speed, each	
Megill, Spring Tongue, dozen	1.80	4 1/2"	2.20
Spring Tongue, per 3	.50	6"	2.35
Perfect Register, per 3	1.75	7 1/2"	2.50
Double Grip, per 3	1.75	9"	2.65
Double Grip, Miller Feeder, 3	2.00	12"	2.95
		Discount on Quantity	

PLATE MOUNTING SUPPLIES

CEI

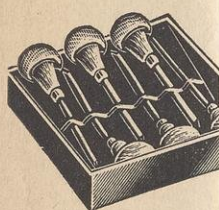


Made



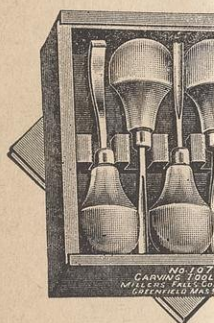
Made

ENGR



These tools are valuable
and electros. They
Endwood and Box

LINOLEUM



of the Magnetic Plate
out risk of damage to the plate or injury to the fingers.

AMERICAN WOOD TYPE MFG. CO. -- 270 Lafayette Street, New York City

QUOINS

Wickersham	
No. 0—dozen	5.25
No. 1—dozen	4.75
No. 2—dozen	4.75
Rouse Register	
No. 1—dozen	3.00
No. 2—dozen	4.00

QUOIN KEYS

Wickersham	
Specify quoin size, each	.75
Challenge	
Specify No. 0, 1, or 2, each	.65
Combination	1.50
Triple Combination	1.75
Right Angle	1.00
Rouse Register	.40
Hi-Speed Challenge	1.20

RACKS, Chase

No. 15230T Cylinder	12.50
No. 15230T Job	17.50
No. 15244T Adjustable	45.00

REGISTER QUOINS; see Quoins

REGLET; see Furniture

ROUND CORNERING MACHINES; see Machines

ROSBACK FOOT PERFORATORS; see Perforators

ROUTERS

Pioneer	28.50
Dixon	
Bench Model	110.00
Full Model	140.00
Challenge Portable	33.95
Challenge Type High Unit for Routers	
No. 10	42.50
No. 20	75.00
Speedline	
12"x16"	47.50
16"x20"	67.50

RUBBERS, Finishing

Electrotype	.40
Half Tone	.40
Less 10% for 3	

RUBBER PRINTING PLATES

2¢ per sq. inch plus 40¢ cutting charge,
any size. Stock sizes: 12x12, 12x18, 18x24,
24x36.

RULES, BRASS & METAL

Prices on request

RULES, Makeup and Composing

12 or 13 em, each	.20
Per dozen	1.80

SAW BLADES; see Blades

SCOTCH STONES; see Stones

SET, Nail

SLUG CLIPPERS; see Lead Cutters

SPACES, Brass & Copper

2 oz. pkg. any size	.35
Also in strips and bulk	

STABBER, Tympan

STA FAST CEMENT; see Cement

STAPLERS

Acme No. 2	12.50
Acme No. 9	49.00
Staple prices on request	

STEEL CHASES; see Chases

STEREOTYPE EQUIPMENT; see Equipment

STICKS; Rock Maple Cutting, see next page

STICKS, Rouse Job

6"	3.90
8"	4.20
10"	4.50
12"	4.80
15"	5.40
20"	6.00

Stainless steel and quarter
point sticks are slightly
higher

STONES, Scotch

Small size	.30
Large size	.60

TABLES, Imposing, Steel

No. 13744A	
No. 14000T	185.00
Contents are extra on tables	

TAPE, Press and Folder Red Line in 36 yard rolls

3/8" wide	.90
1/2" wide	1.00
5/8" wide	1.15
3/4" wide	1.25
7/8" wide	1.50
1" wide	1.75
1 1/8" wide	2.00
1 1/4" wide	2.25
1 3/8" wide	2.75
1 1/2" wide	3.75

Less 10% for 6 rolls

AMERICAN WOOD TYPE MFG. CO. New York • Chicago • San Francisco

AMERICAN WOOD TYPE MFG. CO. -- 270 Lafayette Street, New York City

TOOLS, Engraving

Set of 6 for removing waste metal and end grain maple engraving--	3.50
Set of 5 for linoleum and red rubber -----	2.75

TRIMMER KNIVES; see Knives

TWEEZERS

3" -----	.40
3½" -----	.45
4½" -----	.50
4½" Block -----	.65
With bodkins -----	1.25

TYPE CABINETS; see Cabinets

TYPE CASES; see Cases

TYPE GAUGES; see Gauges

TYPE HIGH GAUGES; see Gauges

TYPE HIGH MACHINES;
see Machines

TYMPAN STABBER; see Stabber

WOOD REGLET; see Furniture

WRIGHT DRILLING MACHINE
BLOCKS; see Blocks

SAWS, Printers

Nelson Model A -----	185.00
Nelson Model B -----	350.00
Nelson Model C -----	250.00
Speedline with Pica Gauge -----	47.00
Somitrim Bench Model -----	125.00
Somitrim with Stand -----	160.00
Speed Craft Bench Model -----	250.00
Speed Craft Pedestal Model -----	295.00

CUTTING STICKS

(Per Dozen)

SIZE	16½"	20"	23½"	27"	30½"	33"	35"	37"	41"	45"	51"
½" --	.65	.75	.90	1.00	1.10	1.20	1.30	1.40	1.50	1.60	1.80
⅝" --	.90	1.00	1.20	1.35	1.40	1.55	1.60	1.70	1.90	2.00	2.35
¾" --	1.00	1.20	1.35	1.55	1.70	1.90	2.00	2.20	2.40	2.70	3.10
1" --	1.70	2.00	2.35	2.70	3.00	3.30	3.50	3.70	4.00	4.60	5.20
1⅛" --	2.00	2.30	2.70	3.00	3.35	3.70	3.90	4.15	4.70	5.20	5.80
1¼" --	2.30	2.55	2.95	3.35	3.70	4.00	4.35	4.55	5.00	5.70	6.50
1⅜" --	2.55	2.80	3.35	3.90	4.30	4.60	4.80	5.15	5.70	6.20	7.10
1½" --	2.95	3.50	4.15	4.70	5.20	5.70	6.00	6.35	7.00	7.70	8.70

(ROUND CUTTING STICKS PRICES ON REQUEST)

CLEANING WOOD TYPE: Use cloth dampened lightly with benzine to wipe ink from type. Never use a brush or type wash. Wood type will last many years if these simple rules are followed.

PLATE MOUNTING SUPPLIES

CEI

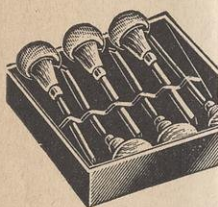


Made



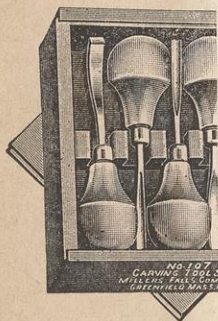
Made

ENGR



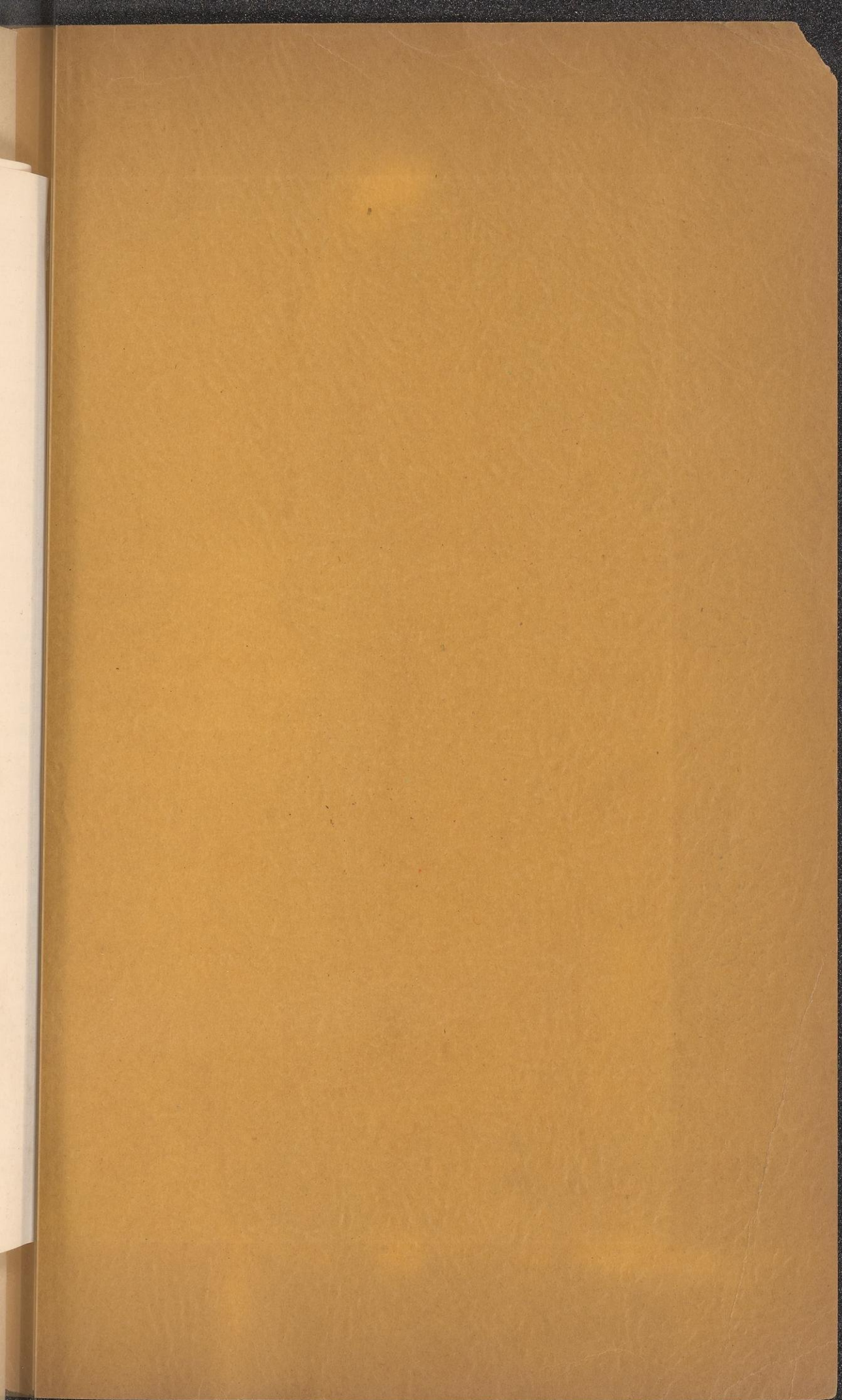
These tools are valu
and electros. They
Endwood and Box

LINOLEUM

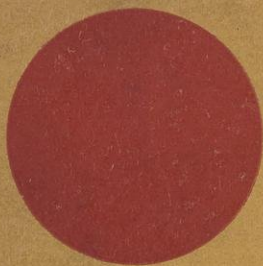


of the Magnetic Plate
out risk of damage to the plate or injury to the fingers.

AMERICAN WOOD TYPE MFG. CO. New York • Chicago • San Francisco



8 PICA



ZINCPLATE CIRCLE FONT

No. 1 _____ \$2.00

1— 8 PICA CIRCLE

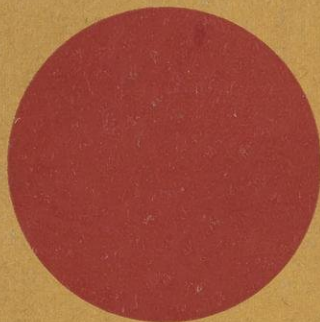
1—10 PICA CIRCLE

1—12 PICA CIRCLE

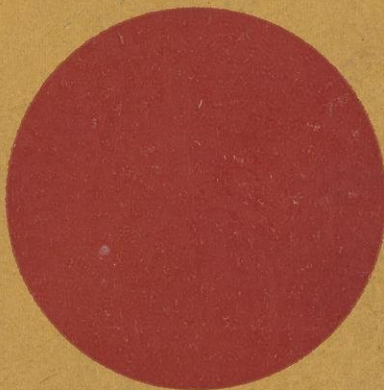
1—15 PICA CIRCLE

ALSO MADE IN SMALLER SIZES

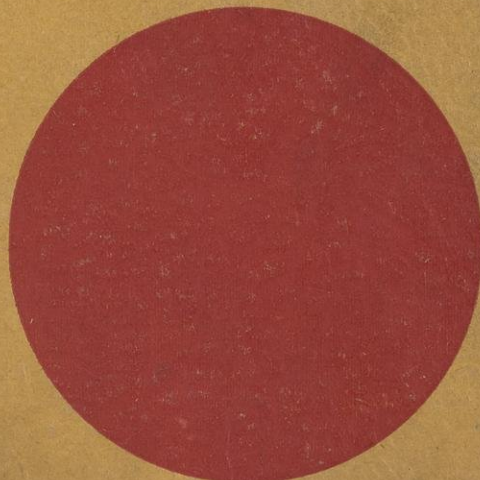
10 PICA



12 PICA



15 PICA



ZINCPLATE CIRCLE FONT

No. 2 _____ \$4.00

1—15 PICA CIRCLE

1—20 PICA CIRCLE

1—24 PICA CIRCLE

1—30 PICA CIRCLE

ALSO MADE IN OUTLINE