



LIBRARIES

UNIVERSITY OF WISCONSIN-MADISON

Site 4042: Princeton, Green Lake County, Township 15N, Range 11E, Section 12. 1952-07-03

[s.l.]: [s.n.], 1952-07-03

<https://digital.library.wisc.edu/1711.dl/44YBMPA7BXHZK8J>

This material may be protected by copyright law (Title 17, US Code).

For information on re-use see:

<http://digital.library.wisc.edu/1711.dl/Copyright>

The libraries provide public access to a wide range of material, including online exhibits, digitized collections, archival finding aids, our catalog, online articles, and a growing range of materials in many media.

When possible, we provide rights information in catalog records, finding aids, and other metadata that accompanies collections or items. However, it is always the user's obligation to evaluate copyright and rights issues in light of their own use.

STAND RECORD

FORESTS

Stand No. 4042

Name: Princeton
 County: Green Lake
 Date: July 3, 1952
 Size of Stand: 12-15 A
 Forest Type: low red maple-oak woods
 Topography:

Locality: NW 1/4 of SW 1/4
 T: 15N R: 11E Sec: 12
 Observers: Ward, Ware, Gray
 Size of Area Sampled: 12-15 A.
 Soil Type:
 Slope: Directions

Condition of Stand: Some cutting, apparently not very recent - large trees scattered throughout stand - some stump sprout trees

Open Grown Trees:

% Canopy:

Stumps:

1.	4.	7.	10.
2.	5.	8.	11.
3.	6.	9.	12.

Soil Data:

	pH	N	P	K	Ca	Mg	Org. Mat.	Colloids	W.H.C.
A ₀									
A ₁									
A ₂									
B									

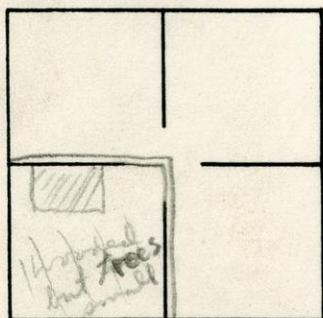
DEPTH

CHARACTERISTICS (Color, Texture, Structure, etc.)

A₀ - 1 in or a little less great deal of matted roots in surface
 A₁ - 1 in - A₁ and A₂ indistinguishable, black sandy
 A₂ -
 B - starting at about 12 in light brown pure sand

Parent Material: Very sandy

Map:



no trunks letter for road

STATION NO.	1	2	3	4	5	6	7	8	9	10
Acer negundo										
A. saccharinum										
A. saccharum rubrum	85	35 280	25 150	4 33	18 4	35 55	3 45	80 110	2 1	70 180 3 420 2 25 3
Betula nigra										
Carya cordiformis										
Celtis occident.										
Crataegus sp.										
Fraxinus americ.										
F. nigra										
F. pennsylvanica										
Gleditsia triacan.										
Gymnocladus dioica										
Juglans cinerea										
Platanus occident.										
Populus deltoides										
P. tremuloides										
Prunus serotina			2							
Quercus bicolor alba	35		1							
Q. rubra		50								
Robinia pseudo.										
Salix nigra										
Tilia americana										
Ulmus americana										
U. rubra										
Prunus virginiana		2								
Quercus velutina		1								
Hamamelis			1							
Distance	19 1/2	23 1/2	26	22 1/2	15	20 1/2	14	21	21	20

STATION NO.	1	2	3	4	5	6	7	8	9	10
Acer negundo										
A. saccharinum										
A. ^{rubrum} saccharum	27	100	120	4	4	35	110	110	100	80
Betula nigra										
Carya cordiformis										
Celtis occidental-										
Crataegus sp.										
Fraxinus americ.										
F. nigra										
F. pensylvanica										
Gleditsia triacan.										
Gymnocladus dioica										
Juglans cinerea										
Platanus occident.										
Populus deltoides										
P. tremuloides										
Prunus serotina										
Quercus ^{rubra} bicolor					110					
Q. ^{alba} rubra	28	50		55	80					
Robinia pseudo.										
Salix nigra										
Tilia americana										
Ulmus americana										
U. rubra										
Distance	8 1/2	11	15 1/2	15 1/2	14 1/2	6 1/2	11	19 1/2	9	18

POINT RECORD TREES

Stand No. 042

STATION NO.	1	2	3	4	5	6	7	8	9	10
Acer negundo	8									
A. saccharinum saccharinum	85 100	25 85	10 95	90	140 55	160 145	15	250 140 65	3	50 4
A. saccharum										
Betula nigra										
Carya cordiformis										
Celtis occident.										
Crataegus sp.										
Fraxinus americ.										
F. nigra										
F. pennsylvanica										
Gleditsia triacan.										
Gymnocladus dioica										
Juglans cinerea										
Platanus occident.										
Populus deltoides										
P. tremuloides				55						
Prunus serotina										
Quercus bicolor										
Q. rubra rubra							14		24 20	80
Robinia pseudo.										
Salix nigra										
Tilia americana										
Ulmus americana										
U. rubra										
Distance	22	19	15	13	12 1/2	14	11 1/2	14	12 1/2	30

STATION NO.	1	2	3	4	5	6	7	8	9	10
Acer negundo										
A. saccharinum										
A. ^{rubrum} saccharum	30 165 135	3 35 28	3 35	2 2		100 55	2 133 85 100		360 110 110	4370 120
Betula nigra										
Carya cordiformis										
Celtis occidental-										
Crataegus sp.										
Fraxinus americ.										
F. nigra										
F. pennsylvanica										
Gleditsia triacan.										
Gymnocladus dioica										
Juglans cinerea										
Platanus occident.										
Populus ^{grand.} deltoides			65							
P. tremuloides										
Prunus serotina										
Quercus ^{alba} bicolor				90				100		
Q. rubra				95	45 110			160 25	50	
Robinia pseudo.										
Salix nigra										
Tilia americana										
Ulmus americana										
U. rubra										
Distance	13	45	19	17 1/2	11	15	18	15	19	23 1/2

Presence or Frequency
(Common species only)

FLOOD-PLAIN HARDWOODS

Stand No. 4042
Quadrat No.

Presence

Adiantum pedatum
Agrimonia gryposepala
Allium canadense
Allium tricoccum
Amphicarpa bracteata
Anemone canadensis
Anemone virginiana
Aralia nudicaulis
Arenaria lateriflora
Arisaema atrorubens
Arisaema dracontium
Asarum canadense
Aster lateriflorus
Aster simplex
Athyrium filix-femina
Athyrium thelypteroides
Boehmeria cylindrica
Brachyelytrum erectum
Caltha palustris
Campanula americana
Carex crinita
Carex grayii
Carex intumescens
Carex lupulina
Carex normalis
Carex vupinoidea
Cephalanthus occidentalis
Cicuta maculata
Circaea quadrisulcata
Cirsium altissimum
Convolvulus sepium
Cornus femina
Cornus obliqua
Cornus rugosa
Cornus stolonifera

Corylus americana
Cryptotaenia canadensis
Desmodium glutinosum
Dioscorea villosa
Echinocystis lobata
Fragaria virginiana
Galium aparine
Galium concinnum
Galium obtusum
Galium triflorum
Geranium maculatum
Geum canadense
Glyceria striata
Hydrophyllum virginianum
Ilex verticillata
Impatiens capensis
Iris virginica
Lactuca biennis
Laportea canadensis
Leersia oryzoides
Lobelia cardinalis
Lycopus americanus
Lycopus uniflorus
Lysimachia ciliata
Lysimachia nummularia
Menispermum canadense
Onoclea sensibilis
Osmorhiza claytoni
Osmorhiza longistylis
Parthenocissus inserta
Phlox divaricata
Phryma leptostachya
Physostegia virginiana
Podophyllum peltatum
Polemonium reptans

Polygonatum canaliculatum
Prenanthes alba
Ranunculus abortivus
Ranunculus septentrionalis
Rhus radicans
Ribes americanum
Ribes cynosbati
Ribes missouriense
Rorippa islandica
Rudbeckia laciniata
Rumex verticillatus
Sambucus canadensis
Sanguinaria canadensis
Sanicula gregaria
Smilacina racemosa
Smilacina stellata
Smilax ecirrhata
Smilax herbacea
Smilax tannoides
Solanum dulcamara
Stachys palustris
Teucrium canadense
Thalictrum dasycarpum
Thalictrum dioicum
Tovara virginiana
Trillium flexipes
Uvularia sessilifolia
Veronicastrum virginianum
Viburnum lentago
Viola canadensis
Viola conspersa
Viola cucullata
Viola pubescens
Vitis riparia
Zanthoxylum americanum

Additional species:

Carex debilis var debilis

Carex brunnescens

Glyceria striata

Podocarpus
striped leaves

Lonicera dioica

Rubus occidentalis

Vaccinium angustifolium

Presence List
(Uncommon species)

FLOOD-PLAIN HARDWOODS

Stand No. 4042
Quadrat No.

Presence

- | | | |
|------------------------------|-----------------------------|-------------------------|
| Acorus calamus | Comandra umbellata | Mitella diphylla |
| Actaea pachypoda | Cornus alternifolia | Monarda fistulosa |
| Actaea rubra | Cuscuta sp. | Muhlenbergia sp. |
| Agastache scrophulariaefolia | Dentaria laciniata | Napaea dioica |
| Agropyron trachycaulum | Desmodium nudiflorum | Nepeta hederacea |
| Alisma subcordatum | Dicentra cucullaria | Oryzopsis racemosa |
| Alnus incana | Diervilla lonicera | Osmunda cinnamomea |
| Alnus rugosa | Dryopteris cristata | Osmunda regalis |
| Ambrosia trifida | Dryopteris spinulosa | Oxalis europaea |
| Amorpha fruticosa | Dryopteris thelypteris | Oxalis stricta |
| Anemone quinquefolia | Ellisia nyctelea | Parietaria pensylvanica |
| Anemonella thalictroides | Elymus virginicus | Phalaris arundinacea |
| Angelica atropurpurea | Epilobium palustre | Phlox pilosa |
| Apios americana | Equisetum arvense | Physocarpus opulifolius |
| Aralia hispida | Equisetum hyemale | Pilea pumila |
| Aralia racemosa | Erigeron philadelphicus | Poa palustris |
| Asclepias incarnata | Erigeron pulchellus | Polygonatum biflorum |
| Aster cordifolius | Erythronium albidum | Polygonatum pubescens |
| Aster sagittifolius | Eupatorium perfoliatum | Polygonum hydropiper |
| Aster shortii | Eupatorium purpureum | Polygonum sagittatum |
| Bidens connata | Eupatorium rugosum | Pteridium aquilinum |
| Bidens coronata | Euonymus atropurpureus | Ranunculus recurvatus |
| Bidens frondosa | Festuca obtusa | Ratibida pinnata |
| Bidens vulgata | Fragaria vesca | Rubus allegheniensis |
| Botrychium virginianum | Galium tinctorium | Rubus occidentalis |
| Bromus purgans | Gerardia gradiflora | Rumex altissimus |
| Calamagrostis canadensis | Geum strictum | Salix amygdaloides |
| Carex albursina | Hackelia virginica | Salix interior |
| Carex alopecoidea | Helenium autumnale | Sanicula marilandica |
| Carex convoluta | Helianthus strumosus | Saxifraga pensylvanica |
| Carex cristata | Hepatica acutiloba | Scutellaria lateriflora |
| Carex grisea | Heraclium maximum | Senecio aureus |
| Carex laxiflora | Hydrophyllum appendiculatum | Silphium perfoliatum |
| Carex molesta | Hypericum ascyron | Sium suave |
| Carex muskingumensis | Hypericum pyramidatum | Solidago gigantea |
| Carex pensylvanica | Hystrix patula | Solidago ulmifolia |
| Carex projecta | Impatiens pallida | Spiraea alba |
| Carex stipata | Iris versicolor | Staphylea trifolia |
| Carex tribuloides | Isopyrum biternatum | Stellaria longifolia |
| Carex typhina | Juncus tenuis | Symplocarpus foetida |
| Carex vesicaria | Lactuca canadensis | Trientalis borealis |
| Cassia marilandica | Lilium michiganense | Trillium grandiflorum |
| Caulophyllum thalictroides | Lilium philadelphicum | Trillium recurvatum |
| Galatstrus scandens | Lilium superbum | Triosteum perfoliatum |
| Chaerophyllum procumbens | Lippia lanceolata | Urtica dioica |
| Chelone glabra | Lonicera proliifera | Uvularia grandiflora |
| Cicuta bulbifera | Maianthemum canadense | Vernonia fasciculata |
| Circaea alpina | Mentha arvensis | Viola renifolia |
| Clematis virginiana | Mertensia virginica | Zizia aurea |
| Clintonia borealis | Mimulus ringens | |

Additional Species:

Presence or Frequency
(Common species only)

FLOOD-PLAIN HARDWOODS

Stand No. 4042
Quadrat No. 1

Adiantum pedatum
Agrimonia gryposepala
Allium canadense
Allium tricoccum
Amphicarpa bracteata
Anemone canadensis
Anemone virginiana
Aralia nudicaulis
Arenaria lateriflora
Arisaema atrorubens
Arisaema dracontium
Asarum canadense
Aster lateriflorus
Aster simplex
coll. — Athyrium filix-femina
Athyrium thelypteroides
Boehmeria cylindrica
Brachyelytrum erectum
Caltha palustris
Campanula americana
Carex crinita
Carex grayii
Carex intumescens
Carex lupulina
Carex normalis
Carex vupinoidea
Cephalanthus occidentalis
Cicuta maculata
Circaea quadrisulcata
Cirsium altissimum
Convolvulus sepium
Cornus femina
Cornus obliqua
Cornus rugosa
Cornus stolonifera

Corylus americana
Cryptotaenia canadensis
Desmodium glutinosum
Dioscorea villosa
Echinocystis lobata
Fragaria virginiana
Galium aparine
Galium concinnum
Galium obtusum
Galium triflorum
Geranium maculatum
Geum canadense
Glyceria striata
Hydrophyllum virginianum
Ilex verticillata
Impatiens capensis
Iris virginica
Lactuca biennis
Laportea canadensis
Leersia oryzoides
Lobelia cardinalis
Lycopus americanus
Lycopus uniflorus
Lysimachia ciliata
Lysimachia nummularia
Menispermum canadense
Onoclea sensibilis
Osmorhiza claytoni
Osmorhiza longistylis
Parthenocissus inserta
Phlox divaricata
Phryma leptostachya
Physostegia virginiana
Podophyllum peltatum
Polemonium reptans

Polygonatum canaliculatum
Prenanthes alba
Ranunculus abortivus
Ranunculus septentrionalis
Rhus radicans
Ribes americanum
Ribes cynosbati
Ribes missouriense
Rorippa islandica
Rudbeckia laciniata
Rumex verticillatus
Sambucus canadensis
Sanguinaria canadensis
Sanicula gregaria
Smilacina racemosa
Smilacina stellata
Smilax ecirrhata
Smilax herbacea
Smilax tamnoides
Solanum dulcamara
Stachys palustris
Teucrium canadense
Thalictrum dasycarpum
Thalictrum dioicum
Tovara virginiana
Trillium flexipes
Uvularia sessilifolia
Veronicastrum virginianum
Viburnum lentago
Viola canadensis
Viola conspersa
Viola cucullata
Viola pubescens
Vitis riparia
Zanthoxylum americanum

Additional species:

Red maple seedling

Presence or Frequency
(Common species only)

FLOOD-PLAIN HARDWOODS

Stand No. 4042
Quadrat No. 2

Adiantum pedatum	Corylus americana	Polygonatum canaliculatum
Agrimonia gryposepala	Cryptotaenia canadensis	Prenanthes alba
Allium canadense	Desmodium glutinosum	Ranunculus abortivus
Allium tricoccum	Dioscorea villosa	Ranunculus septentrionalis
Amphicarpa bracteata	Echinocystis lobata	Rhus radicans
Anemone canadensis	Fragaria virginiana	Ribes americanum
Anemone virginiana	Galium aparine	Ribes cynosbati
Aralia nudicaulis	Galium concinnum	Ribes missouriense
Arenaria lateriflora	Galium obtusum	Rorippa islandica
Arisaema atrorubens	Galium triflorum	Rudbeckia laciniata
Arisaema dracontium	Geranium maculatum	Rumex verticillatus
Asarum canadense	Geum canadense	Sambucus canadensis
Aster lateriflorus	Glyceria striata	Sanguinaria canadensis
Aster simplex	Hydrophyllum virginianum	Sanicula gregaria
Athyrium filix-femina	Ilex verticillata	Smilacina racemosa
Athyrium thelypteroides	Impatiens capensis	Smilacina stellata
Boehmeria cylindrica	Iris virginica	Smilax ecirrhata
Brachyelytrum erectum	Lactuca biennis	Smilax herbacea
Caltha palustris	Laportea canadensis	Smilax tamnoides
Campanula americana	Leersia oryzoides	Solanum dulcamara
Carex crinita	Lobelia cardinalis	Stachys palustris
Carex grayii	Lycopus americanus	Teucrium canadense
Carex intumescens	Lycopus uniflorus	Thalictrum dasycarpum
Carex lupulina	Lysimachia ciliata	Thalictrum dioicum
Carex normalis	Lysimachia nummularia	Tovara virginiana
Carex vupinoidea	Menispermum canadense	Trillium flexipes
Cephalanthus occidentalis	Onoclea sensibilis	Uvularia sessilifolia
Cicuta maculata	Osmorhiza claytoni	Veronicastrum virginianum
Circaea quadrisulcata	Osmorhiza longistylis	Viburnum lentago
Cirsium altissimum	Parthenocissus inserta	Viola canadensis
Convolvulus sepium	Phlox divaricata	Viola conspersa
Cornus femina	Phryma leptostachya	Viola cucullata
Cornus obliqua	Physostegia virginiana	Viola pubescens
Cornus rugosa	Podophyllum peltatum	Vitis riparia
Cornus stolonifera	Polemonium reptans	Zanthoxylum americanum

Additional species:

Vaccinium angustifolium collected

Cornus collected

Prunus virginiana seedling

red maple seedling

Maianthemum canadense

Dryopteris thelypteris

Presence or Frequency
(Common species only)

FLOOD-PLAIN HARDWOODS

Stand No. 4042
Quadrat No. 3

Adiantum pedatum
Agrimonia gryposepala
Allium canadense
Allium tricoccum
Amphicarpa bracteata
Anemone canadensis
Anemone virginiana
Aralia nudicaulis
Arenaria lateriflora
Arisaema atrorubens
Arisaema dracontium
Asarum canadense
Aster lateriflorus
Aster simplex
Athyrium filix-femina
Athyrium thelypteroides
Boehmeria cylindrica
Brachyelytrum erectum
Caltha palustris
Campanula americana
Carex crinita
Carex grayii
Carex intumescens
Carex lupulina
Carex normalis
Carex vupinoidea
Cephalanthus occidentalis
Cicuta maculata
Circaea quadrisulcata
Cirsium altissimum
Convolvulus sepium
Cornus femina
Cornus obliqua
Cornus rugosa
Cornus stolonifera

Corylus americana
Cryptotaenia canadensis
Desmodium glutinosum
Dioscorea villosa
Echinocystis lobata
Fragaria virginiana
Galium aparine
Galium concinnum
Galium obtusum
Galium triflorum
Geranium maculatum
Geum canadense
Glyceria striata
Hydrophyllum virginianum
Ilex verticillata
Impatiens capensis
Iris virginica
Lactuca biennis
Laportea canadensis
Leersia oryzoides
Lobelia cardinalis
Lycopus americanus
Lycopus uniflorus
Lysimachia ciliata
Lysimachia nummularia
Menispermum canadense
Onoclea sensibilis
Osmorhiza claytoni
Osmorhiza longistylis
Parthenocissus inserta
Phlox divaricata
Phryma leptostachya
Physostegia virginiana
Podophyllum peltatum
Polemonium reptans

Polygonatum canaliculatum
Prenanthes alba
Ranunculus abortivus
Ranunculus septentrionalis
Rhus radicans
Ribes americanum
Ribes cynosbati
Ribes missouriense
Rorippa islandica
Rudbeckia laciniata
Rumex verticillatus
Sambucus canadensis
Sanguinaria canadensis
Sanicula gregaria
Smilacina racemosa
Smilacina stellata
Smilax ecirrhata
Smilax herbacea
Smilax tannoides
Solanum dulcamara
Stachys palustris
Teucrium canadense
Thalictrum dasycarpum
Thalictrum dioicum
Tovara virginiana
Trillium flexipes
Uvularia sessilifolia
Veronicastrum virginianum
Viburnum lentago
Viola canadensis
Viola conspersa
Viola cucullata
Viola pubescens
Vitis riparia
Zanthoxylum americanum

Additional species:

Athyrium angustum
Maianthemum
Cornus coll P-1
red oak seedling
red maple seedling
Prunus serot seedling

Trientalis
Viola incognita

Presence or Frequency
(Common species only)

FLOOD-PLAIN HARDWOODS

Stand No. 4042
Quadrat No. 4

Adiantum pedatum	Corylus americana	Polygonatum canaliculatum
Agrimonia gryposepala	Cryptotaenia canadensis	Prenanthes alba
Allium canadense	Desmodium glutinosum	Ranunculus abortivus
Allium tricoccum	Dioscorea villosa	Ranunculus septentrionalis
Amphicarpa bracteata	Echinocystis lobata	Rhus radicans
Anemone canadensis	Fragaria virginiana	Ribes americanum
Anemone virginiana	Galium aparine	Ribes cynosbati
Aralia nudicaulis	Galium concinnum	Ribes missouriense
Arenaria lateriflora	Galium obtusum	Rorippa islandica
Arisaema atrorubens	Galium triflorum	Rudbeckia laciniata
Arisaema dracontium	Geranium maculatum	Rumex verticillatus
Asarum canadense	Geum canadense	Sambucus canadensis
Aster lateriflorus	Glyceria striata	Sanguinaria canadensis
Aster simplex	Hydrophyllum virginianum	Sanicula gregaria
Athyrium filix-femina	Ilex verticillata	Smilacina racemosa
Athyrium thelypteroides	Impatiens capensis	Smilacina stellata
Boehmeria cylindrica	Iris virginica	Smilax ecirrhata
Brachyelytrum erectum	Lactuca biennis	Smilax herbacea
Caltha palustris	Laportea canadensis	Smilax tannoides
Campanula americana	Leersia oryzoides	Solanum dulcamara
Carex crinita	Lobelia cardinalis	Stachys palustris
Carex grayii	Lycopus americanus	Teucrium canadense
Carex intumescens	Lycopus uniflorus	Thalictrum dasycarpum
Carex lupulina	Lysimachia ciliata	Thalictrum dioicum
Carex normalis	Lysimachia nummularia	Tovara virginiana
Carex vupinoidea	Menispermum canadense	Trillium flexipes
Cephalanthus occidentalis	Onoclea sensibilis	Uvularia sessilifolia
Cicuta maculata	Osmorhiza claytoni	Veronicastrum virginianum
Circaea quadrisulcata	Osmorhiza longistylis	Viburnum lentago
Cirsium altissimum	Parthenocissus inserta	Viola canadensis
Convolvulus sepium	Phlox divaricata	Viola conspersa
Cornus femina	Phryma leptostachya	Viola cucullata
Cornus obliqua	Physostegia virginiana	Viola pubescens
Cornus rugosa	Podophyllum peltatum	Vitis riparia
Cornus stolonifera	Polemonium reptans	Zanthoxylum americanum

Additional species:

Maianthemum

Rubus dewberry coll.

Viola incognita

red maple seedling

Lonicera dioica

2 *Carex* species (P-4 collected)

Carex brunnescens

Carex debilis var. *rudgei*

Presence or Frequency
(Common species only)

FLOOD-PLAIN HARDWOODS

Stand No. 4042
Quadrat No. 5

Adiantum pedatum	Corylus americana	Polygonatum canaliculatum
Agrimonia gryposepala	Cryptotaenia canadensis	Prenanthes alba
Allium canadense	Desmodium glutinosum	Ranunculus abortivus
Allium tricoccum	Dioscorea villosa	Ranunculus septentrionalis
Amphicarpa bracteata	Echinocystis lobata	Rhus radicans
Anemone canadensis	Fragaria virginiana	Ribes americanum
Anemone virginiana	Galium aparine	Ribes cynosbati
Aralia nudicaulis	Galium concinnum	Ribes missouriense
Arenaria lateriflora	Galium obtusum	Rorippa islandica
Arisaema atrorubens	Galium triflorum	Rudbeckia laciniata
Arisaema dracontium	Geranium maculatum	Rumex verticillatus
Asarum canadense	Geum canadense	Sambucus canadensis
Aster lateriflorus	Glyceria striata	Sanguinaria canadensis
Aster simplex	Hydrophyllum virginianum	Sanicula gregaria
Athyrium filix-femina	Ilex verticillata	Smilacina racemosa
Athyrium thelypteroides	Impatiens capensis	Smilacina stellata
Boehmeria cylindrica	Iris virginica	Smilax ecirrhata
Brachyelytrum erectum	Lactuca biennis	Smilax herbacea
Caltha palustris	Laportea canadensis	Smilax tamnoides
Campanula americana	Leersia oryzoides	Solanum dulcamara
Carex crinita	Lobelia cardinalis	Stachys palustris
Carex grayii	Lycopus americanus	Teucrium canadense
Carex intumescens	Lycopus uniflorus	Thalictrum dasycarpum
Carex lupulina	Lysimachia ciliata	Thalictrum dioicum
Carex normalis	Lysimachia nummularia	Tovara virginiana
Carex vupinoidea	Menispermum canadense	Trillium flexipes
Cephalanthus occidentalis	Onoclea sensibilis	Uvularia sessilifolia
Cicuta maculata	Osmorhiza claytoni	Veronicastrum virginianum
Circaea quadrisulcata	Osmorhiza longistylis	Viburnum lentago
Cirsium altissimum	Parthenocissus inserta	Viola canadensis
Convolvulus sepium	Phlox divaricata	Viola conspersa
Cornus femina	Phryma leptostachya	Viola cucullata
Cornus obliqua	Physostegia virginiana	Viola pubescens
Cornus rugosa	Podophyllum peltatum	Vitis riparia
Cornus stolonifera	Polemonium reptans	Zanthoxylum americanum

Additional species:

<i>Athyrium angustum</i>	white birch seedling
<i>Dryopteris thelypt</i>	Carya cord. seedling
<i>Clintonia borealis</i>	Carex ficifera P-4 brunnescens
<i>Trientalis</i>	red oak seedling
<i>Vaccinium angustifolium</i>	<i>Scutellaria lateriflora</i> L
<i>Viola incognita</i>	<i>Lonicera dioica</i>
<i>Rubus hispida</i> P-4	

Presence or Frequency
(Common species only)

FLOOD-PLAIN HARDWOODS

Stand No. 4042
Quadrat No. 6

Adiantum pedatum	Corylus americana	Polygonatum canaliculatum
Agrimonia gryposepala	Cryptotaenia canadensis	Prenanthes alba
Allium canadense	Desmodium glutinosum	Ranunculus abortivus
Allium tricoccum	Dioscorea villosa	Ranunculus septentrionalis
Amphicarpa bracteata	Echinocystis lobata	Rhus radicans
Anemone canadensis	Fragaria virginiana	Ribes americanum
Anemone virginiana	Galium aparine	Ribes cynosbati
Aralia nudicaulis	Galium concinnum	Ribes missouriense
Arenaria lateriflora	Galium obtusum	Rorippa islandica
Arisaema atrorubens	Galium triflorum	Rudbeckia laciniata
Arisaema dracontium	Geranium maculatum	Rumex verticillatus
Asarum canadense	Geum canadense	Sambucus canadensis
Aster lateriflorus	Glyceria striata	Sanguinaria canadensis
Aster simplex	Hydrophyllum virginianum	Sanicula gregaria
Athyrium filix-femina	Ilex verticillata	Smilacina racemosa
Athyrium thelypteroides	Impatiens capensis	Smilacina stellata
Bqehmeria cylindrica	Iris virginica	Smilax ecirrhata
Brachyelytrum erectum	Lactuca biennis	Smilax herbacea
Caltha palustris	Laportea canadensis	Smilax tamnoides
Campanula americana	Leersia oryzoides	Solanum dulcamara
Carex crinita	Lobelia cardinalis	Stachys palustris
Carex grayii	Lycopus americanus	Teucrium canadense
Carex intumescens	Lycopus uniflorus	Thalictrum dasycarpum
Carex lupulina	Lysimachia ciliata	Thalictrum dioicum
Carex normalis	Lysimachia nummularia	Tovara virginiana
Carex vupinoidea	Menispermum canadense	Trillium flexipes
Cephalanthus occidentalis	Onoclea sensibilis	Uvularia sessilifolia
Cicuta maculata	Osmorhiza claytoni	Veronicastrum virginianum
Circaea quadrisulcata	Osmorhiza longistylis	Viburnum lentago
Cirsium altissimum	Parthenocissus inserta	Viola canadensis
Convolvulus sepium	Phlox divaricata	Viola conspersa
Cornus femina	Phryma leptostachya	Viola cucullata
Cornus obliqua	Physostegia virginiana	Viola pubescens
Cornus rugosa	Podophyllum peltatum	Vitis riparia
Cornus stolonifera	Polemonium reptans	Zanthoxylum americanum

Additional species:

Scutellaria lat.
Vaccinium angustifolium
Maianthemum
Viola incognita
Prunus virg. seedling
Saxifraga-like

Dryopteris ~~*thelypteris*~~
Rubus occidentalis

Presence or Frequency
(Common species only)

FLOOD-PLAIN HARDWOODS

Stand No. 4042
Quadrat No. 7

Adiantum pedatum	Corylus americana	Polygonatum canaliculatum
Agrimonia grypsosepala	Cryptotaenia canadensis	Prenanthes alba
Allium canadense	Desmodium glutinosum	Ranunculus abortivus
Allium tricoccum	Dioscorea villosa	Ranunculus septentrionalis
Amphicarpa bracteata	Echinocystis lobata	Rhus radicans
Anemone canadensis	Fragaria virginiana	Ribes americanum
Anemone virginiana	Galium aparine	Ribes cynosbati
Aralia nudicaulis	Galium concinnum	Ribes missouriense
Arenaria lateriflora	Galium obtusum	Rorippa islandica
Arisaema atrorubens	Galium triflorum	Rudbeckia laciniata
Arisaema dracontium	Geranium maculatum	Rumex verticillatus
Asarum canadense	Geum canadense	Sambucus canadensis
Aster lateriflorus	Glyceria striata	Sanguinaria canadensis
Aster simplex	Hydrophyllum virginianum	Sanicula gregaria
Athyrium filix-femina	Ilex verticillata	Smilacina racemosa
Athyrium thelypteroides	Impatiens capensis	Smilacina stellata
Boehmeria cylindrica	Iris virginica	Smilax ecirrhata
Brachyelytrum erectum	Lactuca biennis	Smilax herbacea
Caltha palustris	Laportea canadensis	Smilax tannoides
Campanula americana	Leersia oryzoides	Solanum dulcamara
Carex crinita	Lobelia cardinalis	Stachys palustris
Carex grayii	Lycopus americanus	Teucrium canadense
Carex intumescens	Lycopus uniflorus	Thalictrum dasycarpum
Carex lupulina	Lysimachia ciliata	Thalictrum dioicum
Carex normalis	Lysimachia nummularia	Tovara virginiana
Carex vupinoidea	Menispermum canadense	Trillium flexipes
Cephalanthus occidentalis	Onoclea sensibilis	Uvularia sessilifolia
Cicuta maculata	Osmorhiza claytoni	Veronicastrum virginianum
Circaea quadrisulcata	Osmorhiza longistylis	Viburnum lentago
Cirsium altissimum	Parthenocissus inserta	Viola canadensis
Convolvulus sepium	Phlox divaricata	Viola conspersa
Cornus femina	Phryma leptostachya	Viola cucullata
Cornus obliqua	Physostegia virginiana	Viola pubescens
Cornus rugosa	Podophyllum peltatum	Vitis riparia
Cornus stolonifera	Polemonium reptans	Zanthoxylum americanum

Additional species:

Scutellaria lateriflora
Viola incognita
Rubus hispidus
~~*Carex*~~ *delilis* var *rudgei*
Gaylussacia - like coll.

Presence or Frequency
(Common species only)

FLOOD-PLAIN HARDWOODS

Stand No. 4042
Quadrat No. 8

Adiantum pedatum
Agrimonia grypsosepala
Allium canadense
Allium tricoccum
Amphicarpa bracteata
Anemone canadensis
Anemone virginiana
Aralia nudicaulis
Arenaria lateriflora
Arisaema atrorubens
Arisaema dracontium
Asarum canadense
Aster lateriflorus
Aster simplex
Athyrium filix-femina
Athyrium thelypteroides
Boehmeria cylindrica
Brachyelytrum erectum
Caltha palustris
Campanula americana
Carex crinita
Carex grayii
Carex intumescens
Carex lupulina
Carex normalis
Carex vupinoidea
Cephalanthus occidentalis
Cicuta maculata
Circaea quadrisulcata
Cirsium altissimum
Convolvulus sepium
Cornus femina
Cornus obliqua
Cornus rugosa
Cornus stolonifera

Corylus americana
Cryptotaenia canadensis
Desmodium glutinosum
Dioscorea villosa
Echinocystis lobata
Fragaria virginiana
Galium aparine
Galium concinnum
Galium obtusum
Galium triflorum
Geranium maculatum
Geum canadense
Glyceria striata
Hydrophyllum virginianum
Ilex verticillata
Impatiens capensis
Iris virginica
Lactuca biennis
Laportea canadensis
Leersia oryzoides
Lobelia cardinalis
Lycopus americanus
Lycopus uniflorus
Lysimachia ciliata
Lysimachia nummularia
Menispermum canadense
Onoclea sensibilis
Osmorhiza claytoni
Osmorhiza longistylis
Parthenocissus inserta
Phlox divaricata
Phryma leptostachya
Physostegia virginiana
Podophyllum peltatum
Polemonium reptans

Polygonatum canaliculatum
Prenanthes alba
Ranunculus abortivus
Ranunculus septentrionalis
Rhus radicans
Ribes americanum
Ribes cynosbati
Ribes missouriense
Rorippa islandica
Rudbeckia laciniata
Rumex verticillatus
Sambucus canadensis
Sanguinaria canadensis
Sanicula gregaria
Smilacina racemosa
Smilacina stellata
Smilax ecirrhata
Smilax herbacea
Smilax tannoides
Solanum dulcamara
Stachys palustris
Teucrium canadense
Thalictrum dasycarpum
Thalictrum dioicum
Tovara virginiana
Trillium flexipes
Uvularia sessilifolia
Veronicastrum virginianum
Viburnum lentago
Viola canadensis
Viola conspersa
Viola cucullata
Viola pubescens
Vitis riparia
Zanthoxylum americanum

Additional species:

Gaylussacia like cell
Prunus serot seedling
red oak seedling
red maple seedling
Viola micognata
Lactuca coll

Phlox like coll P-8
Rubus frigidus
Botrychium virginianum

~~Carex P-4~~ Carex debilis var. rudgeri

Presence or Frequency
(Common species only)

FLOOD-PLAIN HARDWOODS

Stand No. 4042
Quadrat No. 9

Adiantum pedatum	Corylus americana	Polygonatum canaliculatum
Agrimonia gryposepala	Cryptotaenia canadensis	Prenanthes alba
Allium canadense	Desmodium glutinosum	Ranunculus abortivus
Allium tricoccum	Dioscorea villosa	Ranunculus septentrionalis
Amphicarpa bracteata	Echinocystis lobata	Rhus radicans
Anemone canadensis	Fragaria virginiana	Ribes americanum
Anemone virginiana	Galium aparine	Ribes cynosbati
Aralia nudicaulis	Galium concinnum	Ribes missouriense
Arenaria lateriflora	Galium obtusum	Rorippa islandica
Arisaema atrorubens	Galium triflorum	Rudbeckia laciniata
Arisaema dracontium	Geranium maculatum	Rumex verticillatus
Asarum canadense	Geum canadense	Sambucus canadensis
Aster lateriflorus	Glyceria striata	Sanguinaria canadensis
Aster simplex	Hydrophyllum virginianum	Sanicula gregaria
Athyrium filix-femina	Ilex verticillata	Smilacina racemosa
Athyrium thelypteroides	Impatiens capensis	Smilacina stellata
Boehmeria cylindrica	Iris virginica	Smilax ecirrhata
Brachyelytrum erectum	Lactuca biennis	Smilax herbacea
Caltha palustris	Laportea canadensis	Smilax tamnoides
Campanula americana	Leersia oryzoides	Solanum dulcamara
Carex crinita	Lobelia cardinalis	Stachys palustris
Carex grayii	Lycopus americanus	Teucrium canadense
Carex intumescens	Lycopus uniflorus	Thalictrum dasycarpum
Carex lupulina	Lysimachia ciliata	Thalictrum dioicum
Carex normalis	Lysimachia nummularia	Tovara virginiana
Carex vupinoidea	Menispermum canadense	Trillium flexipes
Cephalanthus occidentalis	Onoclea sensibilis	Uvularia sessilifolia
Cicuta maculata	Osmorhiza claytoni	Veronicastrum virginianum
Circaea quadrisulcata	Osmorhiza longistylis	Viburnum lentago
Cirsium altissimum	Parthenocissus inserta	Viola canadensis
Convolvulus sepium	Phlox divaricata	Viola conspersa
Cornus femina	Phryma leptostachya	Viola cucullata
Cornus obliqua	Physostegia virginiana	Viola pubescens
Cornus rugosa	Podophyllum peltatum	Vitis riparia
Cornus stolonifera	Polemonium reptans	Zanthoxylum americanum

Additional species:

Scutellaria lateriflorus

Daylily - like

Viola incognita

red maple seedling

Vitis riparia

Ilex verticillata

Presence or Frequency
(Common species only)

FLOOD-PLAIN HARDWOODS

Stand No. 4042
Quadrat No. 10

Adiantum pedatum
Agrimonia grypsosepala
Allium canadense
Allium tricoccum
Amphicarpa bracteata
Anemone canadensis
Anemone virginiana
Aralia nudicaulis
Arenaria lateriflora
Arisaema atrorubens
Arisaema dracontium
Asarum canadense
Aster lateriflorus
Aster simplex
Athyrium filix-femina
Athyrium thelypteroides
Boehmeria cylindrica
Brachyelytrum erectum
Caltha palustris
Campanula americana
Carex crinita
Carex grayii
Carex intumescens
Carex lupulina
Carex normalis
Carex vupinoidea
Cephalanthus occidentalis
Cicuta maculata
Circaea quadrisulcata
Cirsium altissimum
Convolvulus sepium
Cornus femina
Cornus obliqua
Cornus rugosa
Cornus stolonifera

Corylus americana
Cryptotaenia canadensis
Desmodium glutinosum
Dioscorea villosa
Echinocystis lobata
Fragaria virginiana
Galium aparine
Galium concinnum
Galium obtusum
Galium triflorum
Geranium maculatum
Geum canadense
Glyceria striata
Hydrophyllum virginianum
Ilex verticillata
Impatiens capensis
Iris virginica
Lactuca biennis
Laportea canadensis
Leersia oryzoides
Lobelia cardinalis
Lycopus americanus
Lycopus uniflorus
Lysimachia ciliata
Lysimachia nummularia
Menispermum canadense
Onoclea sensibilis
Osmorhiza claytoni
Osmorhiza longistylis
Parthenocissus inserta
Phlox divaricata
Phryma leptostachya
Physostegia virginiana
Podophyllum peltatum
Polemonium reptans

Polygonatum canaliculatum
Prenanthes alba
Ranunculus abortivus
Ranunculus septentrionalis
Rhus radicans
Ribes americanum
Ribes cynosbati
Ribes missouriense
Rorippa islandica
Rudbeckia laciniata
Rumex verticillatus
Sambucus canadensis
Sanguinaria canadensis
Sanicula gregaria
Smilacina racemosa
Smilacina stellata
Smilax ecirrhata
Smilax herbacea
Smilax tamnoides
Solanum dulcamara
Stachys palustris
Teucrium canadense
Thalictrum dasycarpum
Thalictrum dioicum
Tovara virginiana
Trillium flexipes
Uvularia sessilifolia
Veronicastrum virginianum
Viburnum lentago
Viola canadensis
Viola conspersa
Viola cucullata
Viola pubescens
Vitis riparia
Zanthoxylum americanum

Additional species:

Osmunda regalis
Cornus calif.
Polygonum sagittatum
red maple seedling
Viola incognita
Scutellaria lateriflorus
Rubus hispidus

Carex { ~~coarse~~ *debilis* var. *nudgeri*
fine *brunnescens*

Presence or Frequency
(Common species only)

FLOOD-PLAIN HARDWOODS

Stand No. 4042
Quadrat No. 11

Adiantum pedatum	Corylus americana	Polygonatum canaliculatum
Agrimonia gryposepala	Cryptotaenia canadensis	Prenanthes alba
Allium canadense	Desmodium glutinosum	Ranunculus abortivus
Allium tricoccum	Dioscorea villosa	Ranunculus septentrionalis
Amphicarpa bracteata	Echinocystis lobata	Rhus radicans
Anemone canadensis	Fragaria virginiana	Ribes americanum
Anemone virginiana	Galium aparine	Ribes cynosbati
Aralia nudicaulis	Galium concinnum	Ribes missouriense
Arenaria lateriflora	Galium obtusum	Rorippa islandica
Arisaema atrorubens	Galium triflorum	Rudbeckia laciniata
Arisaema dracontium	Geranium maculatum	Rumex verticillatus
Asarum canadense	Geum canadense	Sambucus canadensis
Aster lateriflorus	Glyceria striata	Sanguinaria canadensis
Aster simplex	Hydrophyllum virginianum	Sanicula gregaria
Athyrium filix-femina	Ilex verticillata	Smilacina racemosa
Athyrium thelypteroides	Impatiens capensis	Smilacina stellata
Boehmeria cylindrica	Iris virginica	Smilax ecirrhata
Brachyelytrum erectum	Lactuca biennis	Smilax herbacea
Caltha palustris	Laportea canadensis	Smilax tannoides
Campanula americana	Leersia oryzoides	Solanum dulcamara
Carex crinita	Lobelia cardinalis	Stachys palustris
Carex grayii	Lycopus americanus	Teucrium canadense
Carex intumescens	Lycopus uniflorus	Thalictrum dasycarpum
Carex lupulina	Lysimachia ciliata	Thalictrum dioicum
Carex normalis	Lysimachia nummularia	Tovara virginiana
Carex vupinoidea	Menispermum canadense	Trillium flexipes
Cephalanthus occidentalis	Onclea sensibilis	Uvularia sessilifolia
Cicuta maculata	Osmorhiza claytoni	Veronicastrum virginianum
Circaea quadrisulcata	Osmorhiza longistylis	Viburnum lentago
Cirsium altissimum	Parthenocissus inserta	Viola canadensis
Convolvulus sepium	Phlox divaricata	Viola conspersa
Cornus femina	Phryma leptostachya	Viola cucullata
Cornus obliqua	Physostegia virginiana	Viola pubescens
Cornus rugosa	Podophyllum peltatum	Vitis riparia
Cornus stolonifera	Polemonium reptans	Zanthoxylum americanum

Additional species:

Osmunda cinnamomea
Viola incognita
~~*Scutellaria lateriflora*~~ call
~~*Carex brunneascens*~~
Rubus { *sp. rounded* } call
hispida
Maisanthemum

Presence or Frequency
(Common species only)

FLOOD-PLAIN HARDWOODS

Stand No. 4042
Quadrat No. 12

Adiantum pedatum
Agrimonia gryposepala
Allium canadense
Allium tricoccum
Amphicarpa bracteata
Anemone canadensis
Anemone virginiana
Aralia nudicaulis
Arenaria lateriflora
Arisaema atrorubens
Arisaema dracontium
Asarum canadense
Aster lateriflorus
Aster simplex
Athyrium filix-femina
Athyrium thelypteroides
Boehmeria cylindrica
Brachyelytrum erectum
Caltha palustris
Campanula americana
Carex crinita
Carex grayii
Carex intumescens
Carex lupulina
Carex normalis
Carex vupinoidea
Cephalanthus occidentalis
Cicuta maculata
Circaea quadrisulcata
Cirsium altissimum
Convolvulus sepium
Cornus femina
Cornus obliqua
Cornus rugosa
Cornus stolonifera

Corylus americana
Cryptotaenia canadensis
Desmodium glutinosum
Dioscorea villosa
Echinocystis lobata
Fragaria virginiana
Galium aparine
Galium concinnum
Galium obtusum
Galium triflorum
Geranium maculatum
Geum canadense
Glyceria striata
Hydrophyllum virginianum
Ilex verticillata
Impatiens capensis
Iris virginica
Lactuca biennis
Laportea canadensis
Leersia oryzoides
Lobelia cardinalis
Lycopus americanus
Lycopus uniflorus
Lysimachia ciliata
Lysimachia nummularia
Menispermum canadense
Onoclea sensibilis
Osmorhiza claytoni
Osmorhiza longistylis
Parthenocissus inserta
Phlox divaricata
Phryma leptostachya
Physostegia virginiana
Podophyllum peltatum
Polemonium reptans

Polygonatum canaliculatum
Prenanthes alba
Ranunculus abortivus
Ranunculus septentrionalis
Rhus radicans
Ribes americanum
Ribes cynosbati
Ribes missouriense
Rorippa islandica
Rudbeckia laciniata
Rumex verticillatus
Sambucus canadensis
Sanguinaria canadensis
Sanicula gregaria
Smilacina racemosa
Smilacina stellata
Smilax ecirrhata
Smilax herbacea
Smilax tannoides
Solanum dulcamara
Stachys palustris
Teucrium canadense
Thalictrum dasycarpum
Thalictrum dioicum
Tovara virginiana
Trillium flexipes
Uvularia sessilifolia
Veronicastrum virginianum
Viburnum lentago
Viola canadensis
Viola conspersa
Viola cucullata
Viola pubescens
Vitis riparia
Zanthoxylum americanum

Additional species:

Lycopus uniflorus
red maple seedling
Maianthemum

Presence or Frequency
(Common species only)

FLOOD-PLAIN HARDWOODS

Stand No. 4042
Quadrat No. 13

Adiantum pedatum
Agrimonia grypsosepala
Allium canadense
Allium tricoccum
Amphicarpa bracteata
Anemone canadensis
Anemone virginiana
Aralia nudicaulis
Arenaria lateriflora
Arisaema atrorubens
Arisaema dracontium
Asarum canadense
Aster lateriflorus
Aster simplex
Athyrium filix-femina
Athyrium thelypteroides
Boehmeria cylindrica
Brachyelytrum erectum
Caltha palustris
Campanula americana
Carex crinita
Carex grayii
Carex intumescens
Carex lupulina
Carex normalis
Carex vupinoidea
Cephalanthus occidentalis
Cicuta maculata
Circaea quadrisulcata
Cirsium altissimum
Convolvulus sepium
Cornus femina
Cornus obliqua
Cornus rugosa
Cornus stolonifera

Corylus americana
Cryptotaenia canadensis
Desmodium glutinosum
Dioscorea villosa
Echinocystis lobata
Fragaria virginiana
Galium aparine
Galium concinnum
Galium obtusum
Galium triflorum
Geranium maculatum
Geum canadense
Glyceria striata
Hydrophyllum virginianum
Ilex verticillata
Impatiens capensis
Iris virginica
Lactuca biennis
Laportea canadensis
Leersia oryzoides
Lobelia cardinalis
Lycopus americanus
Lycopus uniflorus
Lysimachia ciliata
Lysimachia nummularia
Menispermum canadense
Onoclea sensibilis
Osmorhiza claytoni
Osmorhiza longistylis
Parthenocissus inserta
Phlox divaricata
Phryma leptostachya
Physostegia virginiana
Podophyllum peltatum
Polemonium reptans

Polygonatum canaliculatum
Prenanthes alba
Ranunculus abortivus
Ranunculus septentrionalis
Rhus radicans
Ribes americanum
Ribes cynosbati
Ribes missouriense
Rorippa islandica
Rudbeckia laciniata
Rumex verticillatus
Sambucus canadensis
Sanguinaria canadensis
Sanicula gregaria
Smilacina racemosa
Smilacina stellata
Smilax ecirrhata
Smilax herbacea
Smilax tamnoides
Solanum dulcamara
Stachys palustris
Teucrium canadense
Thalictrum dasycarpum
Thalictrum dioicum
Tovara virginiana
Trillium flexipes
Uvularia sessilifolia
Veronicastrum virginianum
Viburnum lentago
Viola canadensis
Viola conspersa
Viola cucullata
Viola pubescens
Vitis riparia
Zanthoxylum americanum

Additional species:

Osmunda cinnamomea
Viola indoginta
Prunus virg seedling
~~*pointed Rubus hirsutus*~~
Scutellaria lateriflorus
maianthemum

white pine seedling
Carex debilis var rugosa

Presence or Frequency
(Common species only)

FLOOD-PLAIN HARDWOODS

Stand No. 4042
Quadrat No. 14

<i>Adiantum pedatum</i>	<i>Corylus americana</i>	<i>Polygonatum canaliculatum</i>
<i>Agrimonia grypsosepala</i>	<i>Cryptotaenia canadensis</i>	<i>Prenanthes alba</i>
<i>Allium canadense</i>	<i>Desmodium glutinosum</i>	<i>Ranunculus abortivus</i>
<i>Allium tricoccum</i>	<i>Dioscorea villosa</i>	<i>Ranunculus septentrionalis</i>
<i>Amphicarpa bracteata</i>	<i>Echinocystis lobata</i>	<i>Rhus radicans</i>
<i>Anemone canadensis</i>	<i>Fragaria virginiana</i>	<i>Ribes americanum</i>
<i>Anemone virginiana</i>	<i>Galium aparine</i>	<i>Ribes cynosbati</i>
<i>Aralia nudicaulis</i>	<i>Galium concinnum</i>	<i>Ribes missouriense</i>
<i>Arenaria lateriflora</i>	<i>Galium obtusum</i>	<i>Rorippa islandica</i>
<i>Arisaema atrorubens</i>	<i>Galium triflorum</i>	<i>Rudbeckia laciniata</i>
<i>Arisaema dracontium</i>	<i>Geranium maculatum</i>	<i>Rumex verticillatus</i>
<i>Asarum canadense</i>	<i>Geum canadense</i>	<i>Sambucus canadensis</i>
<i>Aster lateriflorus</i>	<i>Glyceria striata</i>	<i>Sanguinaria canadensis</i>
<i>Aster simplex</i>	<i>Hydrophyllum virginianum</i>	<i>Sanicula gregaria</i>
<i>Athyrium filix-femina</i>	<i>Ilex verticillata</i>	<i>Smilacina racemosa</i>
<i>Athyrium thelypteroides</i>	<i>Impatiens capensis</i>	<i>Smilacina stellata</i>
<i>Boehmeria cylindrica</i>	<i>Iris virginica</i>	<i>Smilax ecirrhata</i>
<i>Brachyelytrum erectum</i>	<i>Lactuca biennis</i>	<i>Smilax herbacea</i>
<i>Caltha palustris</i>	<i>Laportea canadensis</i>	<i>Smilax tannoides</i>
<i>Campanula americana</i>	<i>Leersia oryzoides</i>	<i>Solanum dulcamara</i>
<i>Carex crinita</i>	<i>Lobelia cardinalis</i>	<i>Stachys palustris</i>
<i>Carex grayii</i>	<i>Lycopus americanus</i>	<i>Teucrium canadense</i>
<i>Carex intumescens</i>	<i>Lycopus uniflorus</i>	<i>Thalictrum dasycarpum</i>
<i>Carex lupulina</i>	<i>Lysimachia ciliata</i>	<i>Thalictrum dioicum</i>
<i>Carex normalis</i>	<i>Lysimachia nummularia</i>	<i>Tovara virginiana</i>
<i>Carex vupinoidea</i>	<i>Menispermum canadense</i>	<i>Trillium flexipes</i>
<i>Cephalanthus occidentalis</i>	<i>Onoclea sensibilis</i>	<i>Uvularia sessilifolia</i>
<i>Cicuta maculata</i>	<i>Osmorhiza claytoni</i>	<i>Veronicastrum virginianum</i>
<i>Circaea quadrisulcata</i>	<i>Osmorhiza longistylis</i>	<i>Viburnum lentago</i>
<i>Cirsium altissimum</i>	<i>Parthenocissus inserta</i>	<i>Viola canadensis</i>
<i>Convolvulus sepium</i>	<i>Phlox divaricata</i>	<i>Viola conspersa</i>
<i>Cornus femina</i>	<i>Phryma leptostachya</i>	<i>Viola cucullata</i>
<i>Cornus obliqua</i>	<i>Physostegia virginiana</i>	<i>Viola pubescens</i>
<i>Cornus rugosa</i>	<i>Podophyllum peltatum</i>	<i>Vitis riparia</i>
<i>Cornus stolonifera</i>	<i>Polemonium reptans</i>	<i>Zanthoxylum americanum</i>

Additional species:

Osmunda claytoni
~~*Carex brunnescens*~~
Ilex verticillata
Saxifraga - like

Presence or Frequency
(Common species only)

FLOOD-PLAIN HARDWOODS

Stand No. 4042
Quadrat No. 15

Adiantum pedatum	Corylus americana	Polygonatum canaliculatum
Agrimonia gryposepala	Cryptotaenia canadensis	Prenanthes alba
Allium canadense	Desmodium glutinosum	Ranunculus abortivus
Allium tricoccum	Dioscorea villosa	Ranunculus septentrionalis
Amphicarpa bracteata	Echinocystis lobata	Rhus radicans
Anemone canadensis	Fragaria virginiana	Ribes americanum
Anemone virginiana	Galium aparine	Ribes cynosbati
Aralia nudicaulis	Galium concinnum	Ribes missouriense
Arenaria lateriflora	Galium obtusum	Rorippa islandica
Arisaema atrorubens	Galium triflorum	Rudbeckia laciniata
Arisaema dracontium	Geranium maculatum	Rumex verticillatus
Asarum canadense	Geum canadense	Sambucus canadensis
Aster lateriflorus	Glyceria striata	Sanguinaria canadensis
Aster simplex	Hydrophyllum virginianum	Sanicula gregaria
Athyrium filix-femina	Ilex verticillata	Smilacina racemosa
Athyrium thelypteroides	Impatiens capensis	Smilacina stellata
Boehmeria cylindrica	Iris virginica	Smilax ecirrhata
Brachyelytrum erectum	Lactuca biennis	Smilax herbacea
Caltha palustris	Laportea canadensis	Smilax tamnoides
Campanula americana	Leersia oryzoides	Solanum dulcamara
Carex crinita	Lobelia cardinalis	Stachys palustris
Carex grayii	Lycopus americanus	Teucrium canadense
Carex intumescens	Lycopus uniflorus	Thalictrum dasycarpum
Carex lupulina	Lysimachia ciliata	Thalictrum dioicum
Carex normalis	Lysimachia nummularia	Tovara virginiana
Carex vupinoidea	Menispermum canadense	Trillium flexipes
Cephalanthus occidentalis	Onoclea sensibilis	Uvularia sessilifolia
Cicuta maculata	Osmorhiza claytoni	Veronicastrum virginianum
Circaea quadrisulcata	Osmorhiza longistylis	Viburnum lentago
Cirsium altissimum	Parthenocissus inserta	Viola canadensis
Convolvulus sepium	Phlox divaricata	Viola conspersa
Cornus femina	Phryma leptostachya	Viola cucullata
Cornus obliqua	Physostegia virginiana	Viola pubescens
Cornus rugosa	Podophyllum peltatum	Vitis riparia
Cornus stolonifera	Polemonium reptans	Zanthoxylum americanum

Additional species:

Prunus serot. seedling
Lysimachia quadrifolia
fine Carex brunneus
Lactuca coll
Viola incognita
red maple seedling

Presence or Frequency
(Common species only)

FLOOD-PLAIN HARDWOODS

Stand No. 4042
Quadrat No. 16

Adiantum pedatum
Agrimonia grypsosepala
Allium canadense
Allium tricoccum
Amphicarpa bracteata
Anemone canadensis
Anemone virginiana
Aralia nudicaulis
Arenaria lateriflora
Arisaema atrorubens
Arisaema dracontium
Asarum canadense
Aster lateriflorus
Aster simplex
Athyrium filix-femina
Athyrium thelypteroides
Boehmeria cylindrica
Brachyelytrum erectum
Caltha palustris
Campanula americana
Carex crinita
Carex grayii
Carex intumescens
Carex lupulina
Carex normalis
Carex vupinoidea
Cephalanthus occidentalis
Cicuta maculata
Circaea quadrisulcata
Cirsium altissimum
Convolvulus sepium
Cornus femina
Cornus obliqua
Cornus rugosa
Cornus stolonifera

Corylus americana
Cryptotaenia canadensis
Desmodium glutinosum
Dioscorea villosa
Echinocystis lobata
Fragaria virginiana
Galium aparine
Galium concinnum
Galium obtusum
Galium triflorum
Geranium maculatum
Geum canadense
Glyceria striata
Hydrophyllum virginianum
Ilex verticillata
Impatiens capensis
Iris virginica
Lactuca biennis
Laportea canadensis
Leersia oryzoides
Lobelia cardinalis
Lycopus americanus
Lycopus uniflorus
Lysimachia ciliata
Lysimachia nummularia
Menispermum canadense
Onoclea sensibilis
Osmorhiza claytoni
Osmorhiza longistylis
Parthenocissus inserta
Phlox divaricata
Phryma leptostachya
Physostegia virginiana
Podophyllum peltatum
Polemonium reptans

Polygonatum canaliculatum
Prenanthes alba
Ranunculus abortivus
Ranunculus septentrionalis
Rhus radicans
Ribes americanum
Ribes cynosbati
Ribes missouriense
Rorippa islandica
Rudbeckia laciniata
Rumex verticillatus
Sambucus canadensis
Sanguinaria canadensis
Sanicula gregaria
Smilacina racemosa
Smilacina stellata
Smilax ecirrhata
Smilax herbacea
Smilax tannoides
Solanum dulcamara
Stachys palustris
Teucrium canadense
Thalictrum dasycarpum
Thalictrum dioicum
Tovara virginiana
Trillium flexipes
Uvularia sessilifolia
Veronicastrum virginianum
Viburnum lentago
Viola canadensis
Viola conspersa
Viola cucullata
Viola pubescens
Vitis riparia
Zanthoxylum americanum

Additional species:

Osmunda regalis
Phlox-like coll
Trientalis
Viola incognita
red oak seedling
red maple seedling

Presence or Frequency
(Common species only)

FLOOD-PLAIN HARDWOODS

Stand No. 4042
Quadrat No. 17

Adiantum pedatum
Agrimonia grypsosepala
Allium canadense
Allium tricoccum
Amphicarpa bracteata
Anemone canadensis
Anemone virginiana
Aralia nudicaulis
Arenaria lateriflora
Arisaema atrorubens
Arisaema dracontium
Asarum canadense
Aster lateriflorus
Aster simplex
Athyrium filix-femina
Athyrium thelypteroides
Boehmeria cylindrica
Brachyelytrum erectum
Caltha palustris
Campanula americana
Carex crinita
Carex grayii
Carex intumescens
Carex lupulina
Carex normalis
Carex vupinoidea
Cephalanthus occidentalis
Cicuta maculata
Circaea quadrisulcata
Cirsium altissimum
Convolvulus sepium
Cornus femina
Cornus obliqua
Cornus rugosa
Cornus stolonifera

Corylus americana
Cryptotaenia canadensis
Desmodium glutinosum
Dioscorea villosa
Echinocystis lobata
Fragaria virginiana
Galium aparine
Galium concinnum
Galium obtusum
Galium triflorum
Geranium maculatum
Geum canadense
Glyceria striata
Hydrophyllum virginianum
Ilex verticillata
Impatiens capensis
Iris virginica
Lactuca biennis
Laportea canadensis
Leersia oryzoides
Lobelia cardinalis
Lycopus americanus
Lycopus uniflorus
Lysimachia ciliata
Lysimachia nummularia
Menispermum canadense
Onoclea sensibilis
Osmorhiza claytoni
Osmorhiza longistylis
Parthenocissus inserta
Phlox divaricata
Phryma leptostachya
Physostegia virginiana
Podophyllum peltatum
Polemonium reptans

Polygonatum canaliculatum
Prenanthes alba
Ranunculus abortivus
Ranunculus septentrionalis
~~Rhus radicans~~
Ribes americanum
Ribes cynosbati
Ribes missouriense
Rorippa islandica
Rudbeckia laciniata
Rumex verticillatus
Sambucus canadensis
Sanguinaria canadensis
Sanicula gregaria
Smilacina racemosa
Smilacina stellata
Smilax ecirrhata
Smilax herbacea
Smilax tannoides
Solanum dulcamara
Stachys palustris
Teucrium canadense
Thalictrum dasycarpum
Thalictrum dioicum
Tovara virginiana
Trillium flexipes
Uvularia sessilifolia
Veronicastrum virginianum
Viburnum lentago
Viola canadensis
Viola conspersa
Viola cucullata
Viola pubescens
Vitis riparia
Zanthoxylum americanum

Additional species:

Prunus virginiana
Carex flacca
Trientalis
red maple seedling

Presence or Frequency
(Common species only)

FLOOD-PLAIN HARDWOODS

Stand No. 4042
Quadrat No. 18

Adiantum pedatum
Agrimonia grypsosepala
Allium canadense
Allium tricoccum
Amphicarpa bracteata
Anemone canadensis
Anemone virginiana
Aralia nudicaulis
Arenaria lateriflora
Arisaema atrorubens
Arisaema dracontium
Asarum canadense
Aster lateriflorus
Aster simplex
Athyrium filix-femina
Athyrium thelypteroides
Boehmeria cylindrica
Brachyelytrum erectum
Caltha palustris
Campanula americana
Carex crinita
Carex grayii
Carex intumescens
Carex lupulina
Carex normalis
Carex vupinoidea
Cephalanthus occidentalis
Cicuta maculata
Circaea quadrisulcata
Cirsium altissimum
Convolvulus sepium
Cornus femina
Cornus obliqua
Cornus rugosa
Cornus stolonifera

Corylus americana
Cryptotaenia canadensis
Desmodium glutinosum
Dioscorea villosa
Echinocystis lobata
Fragaria virginiana
Galium aparine
Galium concinnum
Galium obtusum
Galium triflorum
Geranium maculatum
Geum canadense
Glyceria striata
Hydrophyllum virginianum
Ilex verticillata
Impatiens capensis
Iris virginica
Lactuca biennis
Laportea canadensis
Leersia oryzoides
Lobelia cardinalis
Lycopus americanus
Lycopus uniflorus
Lysimachia ciliata
Lysimachia nummularia
Menispermum canadense
Onoclea sensibilis
Osmorhiza claytoni
Osmorhiza longistylis
Parthenocissus inserta
Phlox divaricata
Phryma leptostachya
Physostegia virginiana
Podophyllum peltatum
Polemonium reptans

Polygonatum canaliculatum
Prenanthes alba
Ranunculus abortivus
Ranunculus septentrionalis
Rhus radicans
Ribes americanum
Ribes cynosbati
Ribes missouriense
Rorippa islandica
Rudbeckia laciniata
Rumex verticillatus
Sambucus canadensis
Sanguinaria canadensis
Sanicula gregaria
Smilacina racemosa
Smilacina stellata
Smilax ecirrhata
Smilax herbacea
Smilax tannoides
Solanum dulcamara
Stachys palustris
Teucrium canadense
Thalictrum dasycarpum
Thalictrum dioicum
Tovara virginiana
Trillium flexipes
Uvularia sessilifolia
Veronicastrum virginianum
Viburnum lentago
Viola canadensis
Viola conspersa
Viola cucullata
Viola pubescens
Vitis riparia
Zanthoxylum americanum

Additional species:

red maple seedling
Trientalis borealis
Viola incognita
Lysimachia ciliata
Carex ~~crinita~~ ^{debilis} var. ^{rudgeri}
Maianthemum canadense
rounded Rubus hispida

Presence or Frequency
(Common species only)

FLOOD-PLAIN HARDWOODS

Stand No. 4042
Quadrat No. 19

Adiantum pedatum	Corylus americana	Polygonatum canaliculatum
Agrimonia gryposepala	Cryptotaenia canadensis	Prenanthes alba
Allium canadense	Desmodium glutinosum	Ranunculus abortivus
Allium tricoccum	Dioscorea villosa	Ranunculus septentrionalis
Amphicarpa bracteata	Echinocystis lobata	Rhus radicans
Anemone canadensis	Fragaria virginiana	Ribes americanum
Anemone virginiana	Galium aparine	Ribes cynosbati
Aralia nudicaulis	Galium concinnum	Ribes missouriense
Arenaria lateriflora	Galium obtusum	Rorippa islandica
Arisaema atrorubens	Galium triflorum	Rudbeckia laciniata
Arisaema dracontium	Geranium maculatum	Rumex verticillatus
Asarum canadense	Geum canadense	Sambucus canadensis
Aster lateriflorus	Glyceria striata	Sanguinaria canadensis
Aster simplex	Hydrophyllum virginianum	Sanicula gregaria
Athyrium filix-femina	Ilex verticillata	Smilacina racemosa
Athyrium thelypteroides	Impatiens capensis	Smilacina stellata
Boehmeria cylindrica	Iris virginica	Smilax ecirrhata
Brachyelytrum erectum	Lactuca biennis	Smilax herbacea
Caltha palustris	Laportea canadensis	Smilax tannoides
Campanula americana	Leersia oryzoides	Solanum dulcamara
Carex crinita	Lobelia cardinalis	Stachys palustris
Carex grayii	Lycopus americanus	Teucrium canadense
Carex intumescens	Lycopus uniflorus	Thalictrum dasycarpum
Carex lupulina	Lysimachia ciliata	Thalictrum dioicum
Carex normalis	Lysimachia nummularia	Tovara virginiana
Carex vupinoidea	Menispermum canadense	Trillium flexipes
Cephalanthus occidentalis	Onoclea sensibilis	Uvularia sessilifolia
Cicuta maculata	Osmorhiza claytoni	Veronicastrum virginianum
Circaea quadrisulcata	Osmorhiza longistylis	Viburnum lentago
Cirsium altissimum	Parthenocissus inserta	Viola canadensis
Convolvulus sepium	Phlox divaricata	Viola conspersa
Cornus femina	Phryma leptostachya	Viola cucullata
Cornus obliqua	Physostegia virginiana	Viola pubescens
Cornus rugosa	Podophyllum peltatum	Vitis riparia
Cornus stolonifera	Polemonium reptans	Zanthoxylum americanum

Additional species:

Polygonatum pubescens

Carex ~~casae~~ debilis var *rudgii*

Maianthemum

red maple seedling

Trientalis

Rubus pointed leaves *trifida*

Prunus virginiana seedling

Presence or Frequency
(Common species only)

FLOOD-PLAIN HARDWOODS

Stand No. 4042
Quadrat No. 20

Adiantum pedatum
Agrimonia grypsosepala
Allium canadense
Allium tricoccum
Amphicarpa bracteata
Anemone canadensis
Anemone virginiana
Aralia nudicaulis
Arenaria lateriflora
Arisaema atrorubens
Arisaema dracontium
Asarum canadense
Aster lateriflorus
Aster simplex
Athyrium filix-femina
Athyrium thelypteroides
Boehmeria cylindrica
Brachyelytrum erectum
Caltha palustris
Campanula americana
Carex crinita
Carex grayii
Carex intumescens
Carex lupulina
Carex normalis
Carex vupinoidea
Cephalanthus occidentalis
Cicuta maculata
Circaea quadrisulcata
Cirsium altissimum
Convolvulus sepium
Cornus femina
Cornus obliqua
Cornus rugosa
Cornus stolonifera

Corylus americana
Cryptotaenia canadensis
Desmodium glutinosum
Dioscorea villosa
Echinocystis lobata
Fragaria virginiana
Galium aparine
Galium concinnum
Galium obtusum
Galium triflorum
Geranium maculatum
Geum canadense
Glyceria striata
Hydrophyllum virginianum
Ilex verticillata
Impatiens capensis
Iris virginica
Lactuca biennis
Laportea canadensis
Leersia oryzoides
Lobelia cardinalis
Lycopus americanus
Lycopus uniflorus
Lysimachia ciliata
Lysimachia nummularia
Menispermum canadense
Onoclea sensibilis
Osmorhiza claytoni
Osmorhiza longistylis
Parthenocissus inserta
Phlox divaricata
Phryma leptostachya
Physostegia virginiana
Podophyllum peltatum
Polemonium reptans

Polygonatum canaliculatum
Prenanthes alba
Ranunculus abortivus
Ranunculus septentrionalis
Rhus radicans
Ribes americanum
Ribes cynosbati
Ribes missouriense
Rorippa islandica
Rudbeckia laciniata
Rumex verticillatus
Sambucus canadensis
Sanguinaria canadensis
Sanicula gregaria
Smilacina racemosa
Smilacina stellata
Smilax ecirrhata
Smilax herbacea
Smilax tannoides
Solanum dulcamara
Stachys palustris
Teucrium canadense
Thalictrum dasycarpum
Thalictrum dioicum
Tovara virginiana
Trillium flexipes
Uvularia sessilifolia
Veronicastrum virginianum
Viburnum lentago
Viola canadensis
Viola conspersa
Viola cucullata
Viola pubescens
Vitis riparia
Zanthoxylum americanum

Additional species:

red maple seedling
Viola incognita
Maianthemum
Osmunda cinnamomea
Gaylussacia-like
Anemone quinquefolia
Rubus potentillifolius

Carex ~~conspersa~~ ^{deltoidea var. rudgeri}
fine brassicae