



LIBRARIES

UNIVERSITY OF WISCONSIN-MADISON

Orchestra part: oboe (1st & 2nd). Set no. 10 [between 1870-1919?]

Bizet, Georges, 1838-1875; Meilhac, Henri, 1831-1897; Halévy,
Ludovic, 1834-1908

[s.l.]: [s.n.], [between 1870-1919?]

<https://digital.library.wisc.edu/1711.dl/4HPLGP3IGKYLM82>

Based on date of publication, this material is presumed to be in the public domain.

For information on re-use see:

The libraries provide public access to a wide range of material, including online exhibits, digitized collections, archival finding aids, our catalog, online articles, and a growing range of materials in many media.

When possible, we provide rights information in catalog records, finding aids, and other metadata that accompanies collections or items. However, it is always the user's obligation to evaluate copyright and rights issues in light of their own use.

No. **10**

1st & 2nd Oboe.



ORCHESTRATION OF

Handwritten: 2nd part complete

Carmen

By

↔ **Bizet.** ↔

||

THE WITMARK MUSIC LIBRARY

Witmark Building, New York



EVERYTHING FURNISHED IN THE MUSIC LINE.

SELLING AGENTS FOR THE 'GREST' HIGH GRADE MUSIC PAPER, EVERY RULING.

TAMS WITMARK, Inc.

313 W. 40th ST., N. Y. C.

- 1 Prelude - 20
- 2 6b + 7 ^{to air 3}
- 3 Intermetz before #19
- 4 #20
- 5 Inter to act 4 before #25
- 6 #17

THE PROPERTY OF
THE WITMARK MUSIC LIBRARY, 144-146 W. 37th ST., NEW YORK

Any alteration or cut that may be thought desirable **MUST** be indicated in **BLACK LEAD PENCIL ONLY**, lightly, so that the marks can be easily erased and **NO PERMANENT DAMAGE** be done to the part.

IF INK OR ANY KIND OF COLORED OR INDELIBLE pencil be used in marking these parts, a charge will be made for the amount of damage done.

M. WITMARK & SONS, PROPRIETORS.

10

(1) out

Oboe. 1st & 2nd

Comment

Prelude All: 1st & 2nd ~~Repeat~~

Handwritten musical notation for the first system of the Prelude. It consists of three staves. The first staff begins with a treble clef, a key signature of two sharps (F# and C#), and a 2/4 time signature. The music features a series of eighth and sixteenth notes, with some slurs and accents. There are handwritten annotations such as "trm" above the notes and a red bracket under the first few measures.

Handwritten musical notation for the second system of the Prelude. It consists of two staves. The first staff starts with a circled "1" and a boxed "A" above the first measure. The notation continues with eighth and sixteenth notes, including slurs and accents. There are handwritten annotations like "trm" and "out" scattered throughout the system.

Handwritten musical notation for the third system of the Prelude. It consists of two staves. The first staff is labeled "1st" and the second staff is labeled "2nd". Both staves contain musical notation for the first and second parts, with some slurs and accents.

Handwritten musical notation for the fourth system of the Prelude. It consists of two staves. The first staff has a circled "4" and a "2" below it. The second staff has "V.S" and "V.P" written above it with arrows pointing to the staff. The notation includes slurs and accents.

2.
4/4
mis. 2 4

Handwritten musical notation on a single staff, featuring a treble clef, a key signature of two sharps (F# and C#), and a 4/4 time signature. The notation consists of a series of eighth and sixteenth notes. A circled number '2' is written above the first measure. The word 'trun' is written above the final measure.

Handwritten musical notation on a single staff, featuring a treble clef, a key signature of one flat (F), and a 4/4 time signature. The notation consists of a series of eighth and sixteenth notes. The word 'trun' is written above the final measure.

Handwritten musical notation on a single staff, featuring a treble clef, a key signature of one flat (F), and a 4/4 time signature. The notation consists of a series of eighth and sixteenth notes. The word 'trun' is written above the final measure.

Handwritten musical notation on a single staff, featuring a treble clef, a key signature of one flat (F), and a 4/4 time signature. The notation consists of a series of eighth and sixteenth notes. A circled number '3' is written above the final measure.

Handwritten musical notation on a grand staff (treble and bass clefs), featuring a key signature of one flat (F) and a 4/4 time signature. The notation includes a triplet of eighth notes in the treble clef and a circled number '4' above the middle of the staff.

Handwritten musical notation on a grand staff (treble and bass clefs), featuring a key signature of one flat (F) and a 4/4 time signature. The notation includes a triplet of eighth notes in the treble clef and a circled number '5' above the first measure.

Handwritten musical notation on a single staff, featuring a treble clef, a key signature of one flat (F), and a 4/4 time signature. The notation consists of a series of eighth and sixteenth notes. The word 'trun' is written above the final measure.

Handwritten musical notation on a single staff, featuring a treble clef, a key signature of one flat (F), and a 4/4 time signature. The notation consists of a series of eighth and sixteenth notes. The word 'trun' is written above the final measure.

Handwritten musical notation on a single staff, featuring a treble clef, a key signature of one flat (F), and a 4/4 time signature. The notation consists of a series of eighth and sixteenth notes. A circled number '3' is written above the first measure.

Handwritten musical notation on a single staff, featuring a treble clef, a key signature of one flat (F), and a 4/4 time signature. The notation consists of a series of eighth and sixteenth notes. A circled number '3' is written above the first measure, and a circled number '3' is written above the final measure.

"The Crest" (New Gostine without Maternal) M. WITMAY & SONS, Sullivan Art. New York & Chicago

1 (1A) 2

2

Handwritten musical notation on a single staff. It begins with a treble clef and a key signature of two sharps (F# and C#). The melody consists of eighth and sixteenth notes. A circled '2' is written above the staff towards the right side.

Handwritten musical notation on a single staff, continuing the melody from the previous staff. It includes a circled '2' above the staff.

Handwritten musical notation on a single staff, continuing the melody. It includes a circled '2' above the staff.

Handwritten musical notation on a single staff, continuing the melody. It includes a circled '2' above the staff.

Handwritten musical notation on a single staff. It features a circled '4' at the beginning. Above the staff, there are handwritten notes: "Alto. modto." and "pl.". There are also some numbers and markings like "18", "17", and "4".

Handwritten musical notation on a grand staff (treble and bass clefs). It includes handwritten notes: "Alto. modto No. 1. No. 2" and "Ass". Below the staff, there are markings for "No. 2" and the number "4".

Handwritten musical notation on a single staff. It includes a circled '9' above the staff and some other markings.

Handwritten musical notation on a grand staff. It includes a circled '9' above the staff and some other markings.

Handwritten musical notation on a grand staff. It includes a circled '9' above the staff and some other markings.

"The Crest" (None Genuine without Watermark.) M. WITMARK & SONS, Selling Agts, New York & Chicago.



4
5

Handwritten musical notation on a grand staff. The music consists of two staves with various notes and rests. Dynamics include *ppp*, *f*, and *ppp*. There are some handwritten annotations above the staff, possibly indicating fingerings or articulation.

Handwritten musical notation on a grand staff. The music consists of two staves. Dynamics include *p*. There are several circled numbers (11, 7, 8, 10) and a circled letter 'B' at the beginning. A circled '10' is also present with a '4' next to it. The word 'seq. 3' is written in the middle of the staff.

Handwritten musical notation on a grand staff. The music consists of two staves. Dynamics include *ppp* and *ppp*. There are some handwritten annotations above the staff.

Handwritten musical notation on a grand staff. The music consists of two staves. Dynamics include *p*. There are several circled numbers (8, 14) and a circled letter 'D' at the beginning. The word 'flute' is written in red next to the circled '14'.

Handwritten musical notation on a grand staff. The music consists of two staves. Dynamics include *SOLO* and *rit.*. There are circled numbers (15, 7) and red markings above the staff. A circled '15' has '3' and '4' written below it with lines connecting them.

1. ob.

Handwritten musical notation on a grand staff. The music consists of two staves. Dynamics include *ppp*, *ppp*, *ppp*, *f*, and *FLUTE*. There are circled numbers (9, 16) and a circled letter 'E' at the end. The word 'unis.' is written in the middle of the staff. There are also some red markings and a circled '8' at the bottom right.

Solo

Solo.

5

17

10 ¹⁹ *Postes* *F* *Tempo*

2a tempo

V.P.

"The Crest" (None Genuine without Watermark.) M. WITMARK & SONS, Selling Agts, New York & Chicago.



Handwritten musical notation for the first system, featuring a treble and bass staff with notes and rests. A handwritten 'pp' dynamic marking is present above the second measure.

13 K

Handwritten musical notation for the second system, including a treble and bass staff. A handwritten 'ff' dynamic marking is visible above the fourth measure.

Handwritten musical notation for the third system, showing a treble and bass staff with various notes and rests.

44

Handwritten musical notation for the fourth system, featuring a treble and bass staff. A handwritten '7' is written in the bass staff.

14 L Tempo 1.

10 25
8 | 1-2-1

Handwritten musical notation for the fifth system, including a treble and bass staff. A handwritten 'pp' dynamic marking is present above the second measure.

Handwritten musical notation for the sixth system, showing a treble and bass staff with notes and rests.

Adagio
rit.
 No 2 tacet

15 *3-Allto* **A** **B**
 No 3
 16 16 16

Piston **C**
 1 2 3

D
 6

E CUT
 Turn quickly 3

"The Best" (None Genuine without Watermark.) M. WITMARK & SONS, Selling Agents, New York & Chicago.



Handwritten musical notation on a grand staff. The upper staff contains a melodic line with notes and rests. The lower staff contains a bass line with notes and rests. A circled number '12' is written below the first measure of the upper staff. A circled number '4' is written below the fourth measure of the upper staff.

Handwritten musical notation on a grand staff. A circled letter 'F' is written above the first measure of the upper staff. A circled number '7' is written below the first measure of the upper staff. A circled number '10' is written below the second measure of the upper staff.

Handwritten musical notation on a grand staff. A circled letter 'G' is written above the first measure of the upper staff. A circled number '5' is written below the first measure of the upper staff. A circled number '3' is written below the second measure of the upper staff. A circled number '10' is written below the third measure of the upper staff.

Handwritten musical notation on a grand staff. A circled number '3' is written below the first measure of the upper staff. A circled number '10' is written below the second measure of the upper staff.

Handwritten musical notation on a grand staff. A circled number '18' is written above the first measure of the upper staff. A circled number '2' is written below the first measure of the upper staff. A circled number '2' is written below the second measure of the upper staff.

Handwritten musical notation on a grand staff. A circled number '18' is written above the first measure of the upper staff. A circled number '2' is written below the first measure of the upper staff. A circled number '2' is written below the second measure of the upper staff.

Handwritten musical notation on a grand staff. A circled number '18' is written above the first measure of the upper staff. A circled number '2' is written below the first measure of the upper staff. A circled number '2' is written below the second measure of the upper staff.

J HERE

"The Crest" (None Genuine without Watermark.) M. WITMARK & SONS, Selling Agents, New York & Chicago.



4
5

20

Revid. 32 33

Tresser

Omit and go to "4"

No. 36

14-194

2 3

p

5

No. 4

Begin here

8

34

e e d

f

ff

pp

24

28

9

Lento

ret.

24

And no

4

"The Great" (Mace Grainger without Watermark) M. MITCHELL & SONS, Salford, Leeds, New York & Chicago.

1. Ob. I. Ob.

Handwritten musical notation for the first staff, featuring a treble clef, a key signature of three sharps (F#, C#, G#), and a dynamic marking of *pp*. The notation includes a circled number '3' above the staff.

Handwritten musical notation for the second staff, featuring a bass clef and a circled number '36' above the staff.

Lo stesso tempo 1 beat.

Handwritten musical notation for the third staff, featuring a treble clef, a key signature of three sharps, and a circled number '37' above the staff. The notation includes a circled number '38' and '39' above the staff, and a circled number '15' below the staff.

Handwritten musical notation for the fourth staff, featuring a bass clef and a circled number 'E' above the staff. The notation includes a circled number '18' below the staff and the handwritten word 'watch tempo' written across the staff.

I. Ob.

Handwritten musical notation for the fifth staff, featuring a treble clef, a key signature of three sharps, and dynamic markings of *mf* and *p*. The notation includes a circled number '40' and the word 'Solo' above the staff, and a circled number '11' below the staff.

I & II. *in 2/4*

All. mod. *allegro*

Handwritten musical notation for the sixth staff, featuring a bass clef and a circled number '4' below the staff.

"The Crest" (None Genuine without Watermark.) M. WITMARK & SONS, Selling Agents, New York & Chicago.



All: *modto*

(4) (5A) (7) *out*

"The Crest" (None Genuine without this mark) M. WITMARK & SONS, Selling Agts, New York & Chicago.

vocal solo

46

Chorus

16

cut

10

D

unis.

unis

V. P.

40



Omit, begin at No 7.

29. *Allto modto* **A** *modto*

28. *Allto* 2/4 **B** *Andte Allto*

unis.

30. *Recit.* **B** *Begin here*

A *FLUTE*

52

Handwritten musical notation on a grand staff, including notes, rests, and accidentals. Includes circled numbers 5, 6, and 6 at the top of the page.

Handwritten musical notation with a treble clef and a 2/2 time signature. Includes the text "Began here, And to All the" and "pmp plus lent." with circled numbers 33, 50, and 55.

Handwritten musical notation on a grand staff. Includes the text "No. 7." and "16 (A) 18".

Handwritten musical notation on a grand staff. Includes the text "B All. mod to" and "B Poco meno mosso" with circled numbers 15 and 12.

Handwritten musical notation on a grand staff. Includes the text "10" and "12" with circled numbers.

Handwritten musical notation on a grand staff. Includes the text "cut on 2nd to 3rd of 6." and "cut" with circled numbers 1 and 3.



7 tract

(D)

Handwritten musical notation for the first system, including a treble clef, a key signature of one sharp (F#), and a common time signature (C). The notation includes notes, rests, and dynamic markings like 'pp' and 'p'.

Handwritten musical notation for the second system, featuring a treble clef and a key signature of one sharp. It includes notes, rests, and dynamic markings such as 'rit.' and 'rit. 3'.

Allto. ~~And~~ ~~stesso~~ tempo

Handwritten musical notation for the third system, including a treble clef and a key signature of one sharp. It features notes, rests, and dynamic markings like 'pp' and 'p'.

~~Began~~ And to modo

Handwritten musical notation for the fourth system, including a treble clef and a key signature of one sharp. It contains notes, rests, and dynamic markings like 'pp' and 'sfz'. There are also circled numbers '4' and '12'.

Handwritten musical notation for the fifth system, including a treble clef and a key signature of one sharp. It features notes, rests, and dynamic markings like 'pp' and 'p'.

HERE

Handwritten musical notation for the sixth system, including a treble clef and a key signature of one sharp. It contains notes, rests, and dynamic markings like 'pp' and 'rit'. There are circled numbers '8' and '7'.

in bar

cut from G to 5th notes

cut to "9"

31 Recit. 38.

Handwritten musical notation for measures 31-38. Includes a treble clef, a common time signature, and a key signature of two sharps (F# and C#). The notation is on a single staff with some notes and rests. Handwritten annotations include "10", "15", and "p". A circled "6" and "9" are written above the staff. The word "Fine" is written at the end of the line.

39 All: vivo.

Handwritten musical notation for measures 39-44. Includes a treble clef, a 3/4 time signature, and a key signature of two sharps. The notation is on a single staff with notes and rests. Handwritten annotations include "11" and "f". A circled "A" is written above the staff.

Handwritten musical notation for measures 45-50. Includes a treble clef and a key signature of two sharps. The notation is on a single staff with notes and rests. Handwritten annotations include "14" and "p".

Handwritten musical notation for measures 51-56. Includes a treble clef and a key signature of two sharps. The notation is on a single staff with notes and rests. A circled "A" is written above the staff.

Handwritten musical notation for measures 57-62. Includes a treble clef and a key signature of two sharps. The notation is on a single staff with notes and rests.

Handwritten musical notation for measures 63-68. Includes a treble clef and a key signature of two sharps. The notation is on a single staff with notes and rests. Handwritten annotations include "mf" and "f". A circled "B" is written above the staff.

"The Crest" (None Genuine without Watermark.) M. WITMARK & SONS, Selling Agts, New York & Chicago.



18
5 rest

cut to 9

Handwritten musical notation for the first system, featuring treble and bass staves. The key signature has two sharps (F# and C#). The first measure has a dynamic marking of *mf*. The second measure has a rest. The third measure has a dynamic marking of *f*. The fourth and fifth measures have a dynamic marking of *f* with a slur over the notes. The sixth measure has a dynamic marking of *f*.

Handwritten musical notation for the second system, showing treble and bass staves. The first measure has a dynamic marking of *p*. The second measure has a rest. The third and fourth measures have notes with a slur. The fifth and sixth measures have notes with a slur.

Handwritten musical notation for the third system, including treble and bass staves. The first measure has a dynamic marking of *f*. The second measure has a dynamic marking of *ff*. The third and fourth measures have notes with a slur. The fifth and sixth measures have notes with a slur. There is a circled 'C' above the second measure.

Handwritten musical notation for the fourth system, featuring treble and bass staves. The first measure has a dynamic marking of *f*. The second measure has a dynamic marking of *ff*. The third and fourth measures have notes with a slur. The fifth and sixth measures have notes with a slur. There is a circled 'B' above the second measure and some scribbles in the background.

Handwritten musical notation for the fifth system, showing treble and bass staves. The first measure has a dynamic marking of *pp*. The second measure has a dynamic marking of *p*. The third and fourth measures have notes with a slur. The fifth and sixth measures have notes with a slur. There is a circled 'D' above the second measure.

Handwritten musical notation for the sixth system, featuring treble and bass staves. The first measure has a dynamic marking of *f*. The second measure has a dynamic marking of *ff*. The third and fourth measures have notes with a slur. The fifth and sixth measures have notes with a slur.

Cut & 9.

Handwritten musical notation on a grand staff, measures 1-2. The key signature has two sharps (F# and C#). The notation includes quarter notes and rests.

Handwritten musical notation on a grand staff, measures 3-4. Includes a circled '62' and a circled 'cut' in red ink. There are also some handwritten notes and markings.

Handwritten musical notation on a grand staff, measures 5-6. Includes a 'p' dynamic marking. The notation features quarter notes and rests.

Handwritten musical notation on a grand staff, measures 7-8. Includes a circled 'E' and a 'rit' marking. The notation includes quarter notes and rests.

Handwritten musical notation on a grand staff, measures 9-10. Includes a 'f' dynamic marking. The notation features quarter notes and rests.

Handwritten musical notation on a grand staff, measures 11-12. Includes a 'Dura quick' marking. The notation features quarter notes and rests.

"The Crest" (None Genuine without Watermark.) M. WITMARK & SONS, Selling Agrés, New York & Chicago.



unis.

Handwritten musical notation on three staves. The first staff begins with a treble clef and a key signature of two sharps (F# and C#). The notes are mostly quarter and eighth notes, with some rests. The second and third staves continue the melodic line with similar rhythmic values.

To I cut 15
2 8

(42)

Revil.

(H) *All*

Allegro (MSC)

Handwritten musical notation on two staves. The first staff has a treble clef and a common time signature (C). The second staff has a bass clef and a common time signature (C). There are various markings including 'N: 9', '10', '32', and 'ff'.

Adc

4 5

ple
simu
ab.

tact Solo for Violin

Handwritten musical notation on two staves. The first staff has a treble clef and a common time signature (C). The second staff has a bass clef and a common time signature (C). There are various markings including '9' and '10'.

Handwritten musical notation on three staves. The first staff has a treble clef and a key signature of one sharp (F#). The second and third staves continue the melodic line. The notation is heavily obscured by blue scribbles.

I. Ob. tempo I:

wat for dar *ppp* *Das*

(8) (9)

Flute
B
Recit: 10
Power 21
21
70

Musical staff with notes and rests. Time signatures 2/4 and 3/4 are indicated. A circled 'C' is present.

Musical staff with notes and rests. The word "mod to" is written above the staff.

I. ob. Solo Solo Solo 9

Musical staff with notes and rests.

3 beats. 71
A 72

Musical staff with notes and rests. Includes markings "No. 10", "Allto", "PP", and circled numbers 9 and 13.

Musical staff with notes and rests. Includes markings "Rit.", "47", "11/13", and circled numbers 25 and 30.

Musical staff with notes and rests. Includes markings "48", "Allegro", and circled number 15.

Musical staff with notes and rests. Includes markings "49", "* no hold", and "end".

(C) 4 beats.

(50) 3 beats.

atempo watch Molto

Molto *f*

10 *p*

(51) D pin lento (52) Molto allegro

18

5

mf *pp*

(53) F atempo

33

10 → *f*

(54) All: vivo.

(55) All: molto slow

No: 11

47 47

15

(56) Solo

pp

Solo

All: B

f *f* *f* *f* *f*

f *f* *f* *f* *f*

9A *cut*

mit

mmis

Oct 2

mit 6 No. 60

cut
Entre act.

clairinettes.

Ob. I. Oboe I

ppp

Fine

V.P.



10

60 Annotte All Ho

2nd flute

2nd Flute

Handwritten musical score for a flute part. The score consists of ten staves of music. The first staff includes a treble clef, a key signature of one sharp (F#), and a 3/4 time signature. The music is written in a single melodic line with various note values and rests. There are several circled numbers (1, 2, 3, 4, 5, 6, 7, 8, 9, 10, 11, 12, 13) interspersed throughout the score, likely indicating measure numbers or specific performance instructions. The notation includes slurs, ties, and dynamic markings.

38 mea out

38 mea out

Phoe

61

A

Handwritten musical score for a piano accompaniment. The score consists of two staves of music. The top staff is in treble clef and the bottom staff is in bass clef. The music features chords and melodic lines in both hands. There are several circled numbers (1, 2, 3) and other markings (A, B) within the score. The notation includes slurs, ties, and dynamic markings.

ent

4 Ob. A *tempo*

C *cut to D*

D *Diminuto*



5

10

7

Handwritten musical notation for the first system, featuring a treble and bass staff with notes, rests, and dynamic markings like 'p' and 'f'.

Handwritten musical notation for the second system, including a treble and bass staff with notes and rests. A section is crossed out with a red 'X' on a yellow background.

Handwritten musical notation for the third system, starting with a treble and bass staff. Includes the instruction "E sin animato" and "Ob.".

Handwritten musical notation for the fourth system, consisting of a single staff with notes and rests.

Handwritten musical notation for the fifth system, featuring a treble and bass staff with notes and rests. Includes the instruction "F sin anim." and "punta".

Handwritten musical notation for the sixth system, consisting of a single staff with notes and rests.

9

8 *tr*

66 Recit. Kind steps led you all good night

Clarinet

69 all rest

N: 13

12

12

108 4

A 5 7 B

Begin



11 4 C

Handwritten musical notation on two staves. The first staff contains a melodic line with eighth and sixteenth notes. The second staff contains a bass line with similar rhythmic patterns. A dynamic marking *f* is present in the second measure of the first staff.

Handwritten musical notation on two staves. The first staff begins with a circled chord and contains a melodic line. The second staff contains a bass line. A dynamic marking *pp* is present in the first measure of the second staff.

Handwritten musical notation on two staves. The first staff contains a melodic line with some rests. The second staff contains a bass line with rests and notes. A dynamic marking *f* is present in the second measure of the first staff.

Handwritten musical notation on two staves. The first staff contains a melodic line with notes and rests. The second staff contains a bass line with notes and rests. A dynamic marking *f* is present in the second measure of the first staff.

Handwritten musical notation on two staves. The first staff contains a melodic line with notes and rests. The second staff contains a bass line with notes and rests. A dynamic marking *pp* is present in the first measure of the first staff. A handwritten note "seg 12" is written on the right side of the page.

Handwritten musical notation on two staves. The first staff contains a melodic line with notes and rests. The second staff contains a bass line with notes and rests. A dynamic marking *pp* is present in the first measure of the first staff. A handwritten note "unimed to 14" is written on the right side of the page.

Handwritten notes and a sticker at the bottom right of the page. The notes include "seg 12" and "unimed to 14". A piece of yellow tape is partially covering the bottom right corner.

No 14

W. S.

Alately



Foreador Song

N^o 14

C

Handwritten musical notation on a grand staff. The upper staff begins with a treble clef, a key signature of three flats (B-flat, E-flat, A-flat), and a common time signature (C). The lower staff is mostly blank with some diagonal lines. The upper staff contains a series of notes with accents and a circled 'C' at the beginning.

Handwritten musical notation on a grand staff. The upper staff features a melodic line with various note values, including eighth and sixteenth notes, and some triplets. The lower staff contains a bass line with similar rhythmic patterns.

Handwritten musical notation on a grand staff. The upper staff continues the melodic line with more complex rhythmic figures and triplets. The lower staff provides a corresponding bass line.

Handwritten musical notation on a grand staff. The upper staff shows a melodic line with some rests and a circled '3' above a triplet. The lower staff features a bass line with a circled '4' and a double bar line.

Handwritten musical notation on a grand staff. The upper staff continues the melodic line. The lower staff has a circled 'ff' dynamic marking and a double bar line.

Handwritten musical notation on a grand staff. The upper staff features a melodic line with a circled '3' above a triplet. The lower staff has a circled 'ff' dynamic marking and a double bar line.

To 69 P 80

D

A

Handwritten musical notation on two staves. The first staff begins with a treble clef and a key signature of three flats (B-flat, E-flat, A-flat). The second staff begins with a bass clef and the same key signature. The music consists of eighth and sixteenth notes. Dynamics include *pp* and *rit.* A large handwritten number '4' is written between the staves.

Handwritten musical notation on two staves. The first staff begins with a treble clef and a key signature of one flat (F). The second staff begins with a bass clef and the same key signature. Dynamics include *f*, *ppp*, and *mf*. A large handwritten number '1' is written on the left side of the first staff.

B + E

Handwritten musical notation on two staves. The first staff begins with a treble clef and a key signature of one flat (F). The second staff begins with a bass clef and the same key signature. Dynamics include *ppp*, *rit.*, and *f*. A large handwritten number '1' is written on the left side of the first staff.

F

Handwritten musical notation on two staves. The first staff begins with a treble clef and a key signature of one flat (F). The second staff begins with a bass clef and the same key signature. The music consists of eighth and sixteenth notes.

Handwritten musical notation on two staves. The first staff begins with a treble clef and a key signature of one flat (F). The second staff begins with a bass clef and the same key signature. Dynamics include *ppp*. A large handwritten number '5' is written on the left side of the first staff. There are some scribbles and a circled '2' in the second measure.

Handwritten musical notation on two staves. The first staff begins with a treble clef and a key signature of one flat (F). The second staff begins with a bass clef and the same key signature. Dynamics include *rall* and *a tempo*. The music is heavily scribbled over with red and blue ink.

Bass Trumpet

Handwritten musical notation for the first system, consisting of two staves with notes and rests.

Handwritten musical notation for the second system, including a piano (*pp*) dynamic marking.

Handwritten musical notation for the third system, with some faint markings.

Handwritten musical notation for the fourth system, featuring a double bar line and the number 21.

Handwritten musical notation for the fifth system, including the tempo marking *Alto. molto*.

Handwritten musical notation for the sixth system, including a measure with the number 5.

3 out

No 14b

Abis

No 14

No 14c

21

Alto. molto

5

All Risk at My Risk

Solo sadly

Handwritten musical notation for the first system, featuring a treble and bass staff with notes and rests. The key signature has three sharps (F#, C#, G#). The treble staff contains a melody with notes and rests, while the bass staff has rests. The word "Solo" is written above the treble staff and "sadly" is written below it. The word "top" is written above the bass staff and "basso" is written below it. A circled number "6" is written at the end of the bass staff.

Handwritten musical notation for the second system, showing a treble staff with a double bar line and a diagonal slash. The number "9" is written above the staff. To the left, "No. 14" is written and bracketed to the staff.

Handwritten musical notation for the third system, featuring a treble and bass staff with notes and rests. The key signature has five flats (Bb, Eb, Ab, Db, Gb). The time signature is 10/6. The number "10" is written above the treble staff and "3" is written above the bass staff. The number "1" is written below the treble staff. The number "15" is written to the left of the treble staff.

Handwritten musical notation for the fourth system, featuring a treble and bass staff with notes and rests. The number "2" is written in the treble staff. The number "1-20-1" is written in red above the treble staff. The number "10" is written below the treble staff.

Handwritten musical notation for the fifth system, featuring a treble and bass staff with notes and rests. The number "10" is written below the treble staff.

Handwritten musical notation for the sixth system, featuring a treble and bass staff with notes and rests. A circled "A" is written in the treble staff. The number "7" is written at the end of the bass staff.

15 3
2-22-16

15
11
26

18

23 .ob.

24

25

5

pp

25

pp

179

26-2

p

pp

g

f

A handwritten musical score on aged, yellowed paper. The score consists of several systems of staves. The top system has two staves with notes and rests. The second system has two staves, with the first staff starting with a double bar line and a red box containing the number '23'. The third system has two staves, with a red box containing '24' at the end. The fourth system has two staves, with a red box containing '25' above the first staff and a '5' and 'pp' dynamic marking below the first staff. The fifth system has two staves, with a red box containing '25' above the first staff and 'pp' dynamic marking below the first staff. The sixth system has two staves, with a circled '179' above the first staff and a red box containing '26-2' above the second staff. The seventh system has two staves, with 'p' and 'pp' dynamic markings below the first staff and a 'g' dynamic marking below the second staff. The eighth system has two staves, with an 'f' dynamic marking below the first staff. There are various other annotations, including a circled 'A' at the top right, a '7' on the left margin, and some scribbles.

12
14
16
40

Handwritten musical notation on a grand staff. The top staff contains a melodic line with various notes and rests. The bottom staff contains a bass line. There are some markings above the staves, including a double sharp symbol (##) and a circled 'D'.

Handwritten musical notation on a grand staff. The top staff contains a melodic line. The bottom staff contains a bass line with some rests. Annotations include a circled '80', a circled 'D', and the word 'Tempo' written in red. There are also some numbers like '24', '16', and '40' written in red.

Handwritten musical notation on a grand staff. The top staff contains a melodic line. The bottom staff contains a bass line with some rests. The word 'unis.' is written in the middle of the staff.

Handwritten musical notation on a grand staff. The top staff contains a melodic line. The bottom staff contains a bass line with some rests. Annotations include a circled '31', a circled '3', and the number '16'.

Handwritten musical notation on a grand staff. The top staff contains a melodic line. The bottom staff contains a bass line. Annotations include a circled 'F', the word 'a tempo', and a circled '33'.

Handwritten musical notation on a grand staff. The top staff contains a melodic line. The bottom staff contains a bass line. Annotations include a circled '5', the word 'a tempo', and the number '45'. There are also some numbers like '32', '33', and '22' written in red.

43

H

34

45

35

86

I

36

37

Handwritten circled number 5

Handwritten number 28

Handwritten musical notation on two staves, measures 1-4.

Handwritten musical notation on two staves, measures 5-8. Measure 6 contains a red handwritten number 38.

Handwritten musical notation on two staves, measures 9-12.

Handwritten musical notation on two staves, measures 13-16.

Handwritten musical notation on two staves, measures 17-20.

Handwritten musical notation on two staves, measures 21-24.

Large red handwritten mark resembling a stylized 'L' or '4' with a flourish.



AE
7

89

No. 15 \flat C 12

88

No. 16 C 28 20

All. a ~~ff~~ *rit* here

All. *rit* *rit*

10

Begin

No. 17 C 3 3 5

All. *mod to*

A 91 All. *mod to* 39

11-40-12-41-94 All. *mod to*

Castnetts 16

Trp.

9-32-1/32

2

3-4-2-8

3 1 E 8

Quickly

41
18
23

Un poco rit: a tempo

Handwritten musical score for the first system, consisting of two staves. The top staff contains a melodic line with notes and rests. The bottom staff contains a bass line with a circled '3' and a circled 'F 11' above it, indicating a triplet and a fingering. There are some scribbles and a red circle around the first few notes of the top staff.

Tempo I

Handwritten musical score for the second system, consisting of two staves. The top staff has a melodic line with a 'Here' annotation above the final measure. The bottom staff has a bass line with a circled '2' at the end. There are various annotations and scribbles throughout the system.

G. Mosso

Handwritten musical score for the third system, consisting of two staves. The top staff is mostly blank with some notes. The bottom staff is labeled 'Engl: Horn' and contains a melodic line. The text 'English Horn (?) no' is written above the staff.

Handwritten musical score for the fourth system, consisting of two staves. Both staves contain melodic lines with various notes and rests. There are some annotations like 'HP' above the top staff.

Handwritten musical score for the fifth system, consisting of two staves. The top staff has a melodic line with a 'cresc.' annotation. The bottom staff is labeled 'Engl. Horn' and contains a melodic line with a 'Solo?' annotation. There is a circled '2' at the end of the bottom staff.

Engl. Horn

V. S.

Andte *press.*

English Horn

cresc. *dim:* *Aud^{no}*

pp. *pp.* *p. solo*

Anim. impoco a tempo

Ob. *pp.* *mf.* *crescendo* *mf.* *Eng Horn*

Stringen *do...* *molt.*

100 **45**

17 on page 48

16 cont.

a tempo esp.

Cresc

46 A Tempo

1 pop hit

101 **K** **17** **Moderate**
30 **L** **pop**

Cut at 18 (12 before) to 21 before M

12

twins

16 cont. 17 cont.

"The Crest" (None Genuine without Watermark.) M. WITMARK & SONS, Selling Agents, New York & Chicago.

in on 3

49

I.

4

Allegretto

Handwritten musical notation for the first system, featuring a treble and bass staff with notes, rests, and dynamic markings like 'f' and '4'.

Begin

Handwritten musical notation for the second system, including a treble and bass staff with notes and rests.

107

Handwritten musical notation for the third system, showing a treble and bass staff with notes and rests.

All. mod. to

No. 18

10-5-2-1
12
10-2

2nd Fl.

10

108 (A)

Handwritten musical notation for the fourth system, including a treble and bass staff with notes and rests, and the word 'COUNT' written in large letters.

"The Crest" (None Genuine without Watermark.) M. WITMARK & SONS, Selling Agts, New York & Chicago.



B *All.^o a molte.* **109** *a tempo* **110**

54 *rall* *a tempo*

(Chorus)

111 **C** *All.^o mod^{to}* **55**

pp *f* **15** *p*

"The Crest" (None Genuine without Watermark.) M. WITMARK & SONS, Selling Agts, New York & Chicago.

Handwritten musical score on aged paper, consisting of six systems of two staves each. The notation includes treble and bass clefs, various note values (quarter, eighth, sixteenth notes), rests, and dynamic markings such as *f* and *ff*. A red circle around the number 56 is present in the second system. A boxed-in section in the fifth system contains a red 'E' and a red '7'. A red '58' is written in the sixth system. The manuscript shows signs of age, including foxing and some staining.



Handwritten musical notation for the first system, featuring a treble and bass staff with notes, rests, and dynamic markings like 'f' and 'p'.

Handwritten musical notation for the second system, including a large number '5' and a dynamic marking 'f'.

Handwritten musical notation for the third system, showing notes and rests on both staves.

Handwritten musical notation for the fourth system, featuring a circled red number '119' and '114'.

Handwritten musical notation for the fifth system, with notes and rests on both staves.

Handwritten musical notation for the sixth system, including notes, rests, and dynamic markings.

Key of C

Handwritten musical notation for the first system, consisting of two staves with notes and rests.

Handwritten musical notation for the second system, consisting of two staves with notes and rests.

Act III.

E. H. L. M.

Entr'act.

Handwritten musical notation for the Entr'act section, including instrument markings like "13th Clar." and "Engl: Horn." with a circled number "115" and a double slash "20".

Handwritten musical notation for the third system, consisting of two staves with notes and rests.

Handwritten musical notation for the fourth system, including a large handwritten signature or initials.

"The Great" (None Genuine without Watermark.) M. WITMARK & SONS, Selling Agts, New York & Chicago.



17

17

Handwritten musical notation for the first system, featuring two staves with treble and bass clefs, a key signature of two flats, and various rhythmic markings.

Handwritten musical notation for the second system, including a staff with a soprano clef and a staff with an alto clef, with dynamic markings like "f" and "E.H."

(E.H. solo.) Solo for Eng. Horn.

Handwritten musical notation for the third system, showing two staves with treble clefs and dynamic markings like "p" and "f"

Handwritten musical notation for the fourth system, consisting of two staves with treble clefs and a piano dynamic marking

116

Handwritten musical notation for the fifth system, featuring two staves with a common time signature and a key signature of two flats

Handwritten musical notation for the sixth system, showing two staves with treble clefs and various rhythmic patterns

17

A

Handwritten musical notation on five staves. The first staff has a circled 'A' above it. The second staff has '12/10' written above it. The third staff has 'D E' written above it. The fourth and fifth staves contain piano accompaniment with various notes and rests.

"The Crest" (None Genuine without Watermark.) M. WITMARK & SONS, Selling, Agts., N. York & Chicago.

Handwritten musical notation on a single staff. It begins with a circled 'A' and the word 'Amis' written in blue ink. The notation includes notes, rests, and a 'p/p' dynamic marking.

Handwritten musical notation on two staves. The second staff has a circled 'B' above it. The notation includes notes, rests, and a 'p' dynamic marking.

Handwritten musical notation on two staves. The second staff has a circled 'B' above it. The notation includes notes, rests, and a '3' marking.

Handwritten musical notation on two staves. The notation includes notes, rests, and markings '12/10', '3', and '4'.

Handwritten musical notation on a single staff. It begins with a circled 'C' and the Roman numeral 'I'. The notation includes notes, rests, and a '2' marking.



Handwritten musical notation for the first system, consisting of two staves. The top staff contains a melodic line with various note values and rests. The bottom staff contains a bass line with fewer notes, including a triplet of eighth notes.

Handwritten musical notation for the second system, consisting of two staves. The top staff continues the melodic line with slurs and ties. The bottom staff continues the bass line with rests and notes.

Handwritten musical notation for the third system, consisting of two staves. The top staff features a series of eighth notes with slurs. The bottom staff has a similar rhythmic pattern. There are some handwritten annotations below the staves.

Handwritten musical notation for the fourth system, consisting of two staves. The top staff has a circled 'D' above it. The bottom staff has several slanted lines indicating rests or cancellations.

Handwritten musical notation for the fifth system, consisting of two staves. The top staff is marked "unis" and contains a continuous melodic line. The bottom staff contains a similar melodic line.

Handwritten musical notation for the sixth system, consisting of two staves. The top staff has a circled 'D' above it. The bottom staff has several slanted lines indicating rests or cancellations.

10 10

"The Crest" (None Genuine without Watermark.) M. WITMARK & SONS, Selling Agts, New York & Chicago.

Handwritten: \oplus / 1 / 2

Handwritten: I. **5**
Softer

Handwritten: 119 out to A rit

Handwritten: 120 B

Handwritten: V.P. solo



All^o mod^{to}

Solo

dyring - 5
7 - 10 5
8

15

121

12

No. 20.

192

Viola

12

32

2

123.A

Horns

10/10

9

10

1

5

B

un poco piu mosso b^e

7

8

slow 26

29

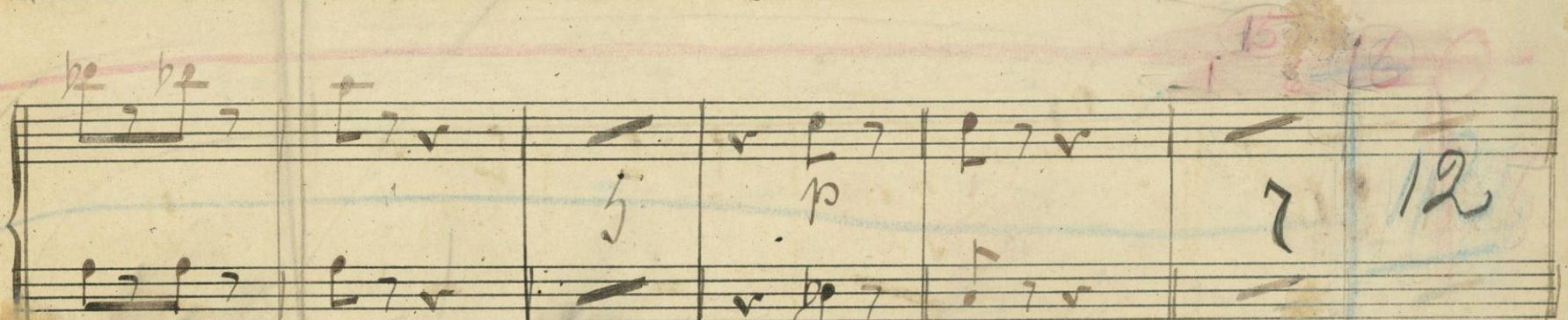
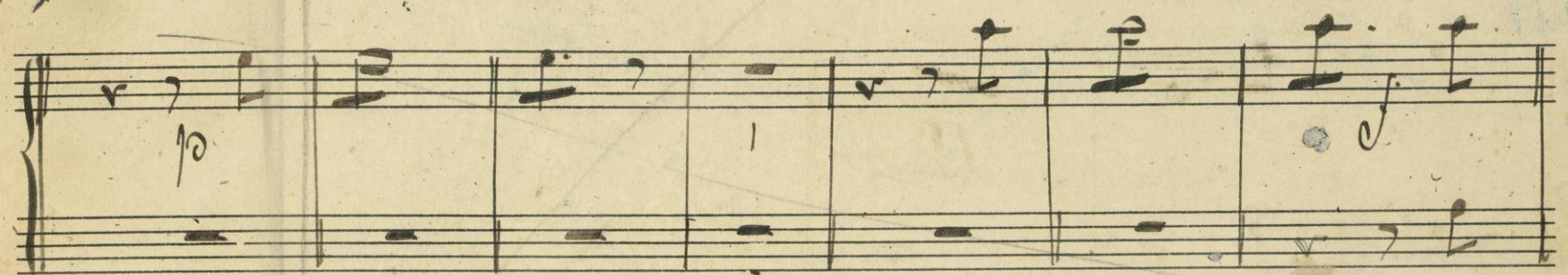
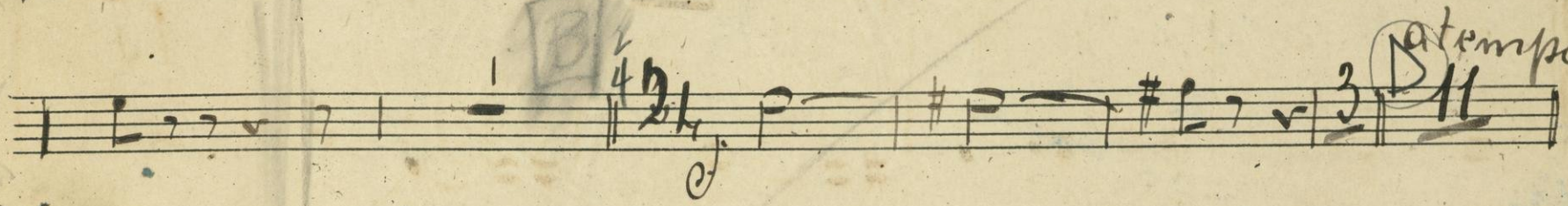
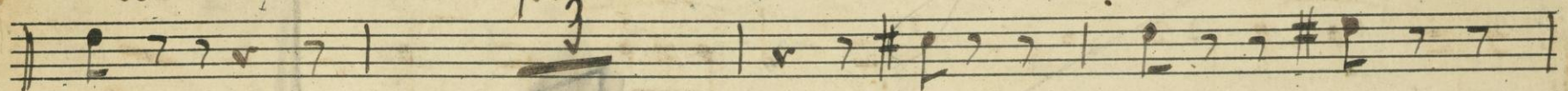
12

rit.

no cut

mmis

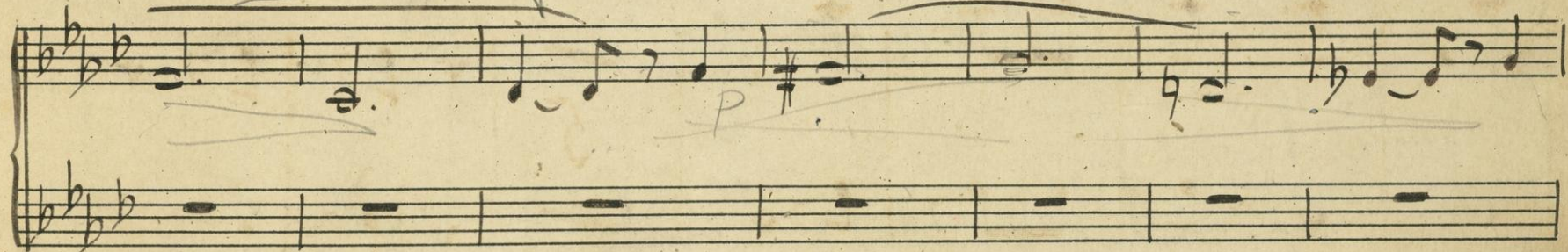
(18) C *al tempo anim.*



(126) (E) = *cut at 12* *Amolte* *transpose to tempo*

flute (10) 4 17 15

at 12 cut to 1 before F



I. (19) *al tempo* 5

129 F 2/4 11

"The Crest" (None Genuine without Watermark.) M. WITMARK & SONS, Selling Agts, New York & Chicago.



*Hand a cat in
the room*

1st and last H same

20

20

130

Allegro

play

21

A

"The Crest" (None Genuine without Watermark.) M. WITMARK & SONS, Selling Agts, New York & Chicago.

B

Handwritten musical notation for the first system, featuring a grand staff with treble and bass clefs, a key signature of three flats, and a common time signature. The music includes a whole rest followed by eighth notes and triplet markings.

Handwritten musical notation for the second system, continuing the piece with eighth notes and rests in both staves.

Handwritten musical notation for the third system, showing a continuation of the melodic and harmonic lines with eighth notes and rests.

Handwritten musical notation for the fourth system, featuring a melodic line in the treble clef and a bass line in the bass clef.

Handwritten musical notation for the fifth system, including a blue number "135" written above the staff and various musical notations.

Handwritten musical notation for the sixth system, starting with a circled "C" and including the word "Solo" written above the staff.

20

20

Solo

Handwritten musical notation for the first system, consisting of two staves. The key signature has four flats (B-flat, E-flat, A-flat, D-flat). The first staff contains a melodic line with a fermata over the first measure. The second staff contains a bass line. A dynamic marking *mf* is present. A circled number '2' is written above the first measure of the second staff.

Handwritten musical notation for the second system, consisting of two staves. The first staff has a circled 'Solo' above it. The second staff has circled numbers '3' and '4' above it. The notation includes various rhythmic values and rests.

Handwritten musical notation for the third system, consisting of two staves. The first staff has a circled 'I' above it. The second staff has a circled 'I' above it. The notation includes various rhythmic values and rests.

Handwritten musical notation for the fourth system, consisting of two staves. The first staff has a circled '136' and the word 'Molto' written above it. The second staff has a circled 'I' above it. The notation includes various rhythmic values and rests.

Handwritten musical notation for the fifth system, consisting of two staves. The first staff has a circled '3' above it. The second staff has a circled '3' above it. The notation includes various rhythmic values and rests.

2) Engl Horn.

Handwritten musical notation for the first staff of the English Horn section, consisting of a single staff with a key signature of two flats (B-flat, E-flat).

Handwritten musical notation for the second staff of the English Horn section, consisting of a single staff.

Handwritten musical notation for the third staff of the English Horn section, consisting of a single staff.

Handwritten musical notation for the fourth staff of the English Horn section, consisting of a single staff.

Handwritten musical notation for the fifth staff of the English Horn section, consisting of a single staff.

"The Crest" (None Genuine without Watermark.) M. WITMARK & SONS, Selling Agents, New York & Chicago.



Ob.

atempo

Engl. H.

B All: molto mod to

Engl. H.

atempo

Tempo Primo

Ob.

Engl. H.

Eng. Horn

Engl. H.

140

x cut (Jose)

N: 22

into 23 at once

141 All: mod to

N: 23

atempo

B

piu lento.

C

Tempo Primo

back in

cut at 3 in meas

31

V.I.P.



rit *f* *rit* *atempo* *rit*

m *D*

1 ~~3~~ 5 10

E

1 2 4

3 10/10

F

f *f* *f*

cut *cut*

m

E **G** *Adesso tempo*

Handwritten musical score for piano, consisting of four systems of staves. The music is in a minor key with a key signature of one flat. It features various rhythmic patterns, including eighth and sixteenth notes, and rests. There are some annotations in red ink, including a circled '4' and a circled '146'.

No. 24.

Handwritten musical score for No. 24, featuring vocal lines and piano accompaniment. The score includes tempo markings such as "rit", "pian anim.", "Molto cut on 2 to", "rall", "a tempo", and "all. mod. h.". It also contains performance instructions like "I promise that your blood will be", "I love", and "I clear". There are several boxed letters (A, B, C, D) and circled numbers (147, 148, 33, 34, 35) throughout the score.

22

22

150

Solo

I

153 un poco anim.

22

H *al tempo*

Molto

1

All.

J

All. molto molto

156

Lo stesso tempo 10

cut



Handwritten scribbles at the top of the page.

Handwritten musical notation on a grand staff. The first staff has a circled number '47' and a dynamic marking 'p'. The second staff has a circled number '23 out' and a dynamic marking 'p'. There are some handwritten notes above the staves.

Handwritten musical notation on a grand staff, continuing from the previous system. It includes a circled number '23 out' and a dynamic marking 'p'.

Handwritten section title: "Act 4."

Handwritten section title: "Entr. Act 4"

Handwritten number: "15.4"

Handwritten circled note: "(3) beats"

Handwritten musical notation in 3/8 time, consisting of two staves. The first staff has a circled number '1' and the word 'Solo.' above it. The second staff has a circled number '2' and the word 'dim' at the end.

Handwritten musical notation in 3/8 time, consisting of two staves. The first staff has a circled number '1' and the word 'Solo.' above it. The second staff has a circled number '2' and the word 'dim' at the end.

Handwritten musical notation on a single staff. It starts with a circled number '1' and the word 'Solo.' above it. Below the staff is the text 'p eson.'.

Handwritten musical notation on a single staff. It ends with a circled number '2' and the word 'dim' at the end.

Handwritten musical notation on a grand staff. The first staff has a circled number '1' and the word 'Solo.' above it. The second staff has a circled number '2' and the word 'dim' at the end.

9

I.

rall

atempo

All^o moderato

unis

No. 25

act 4

To Beque 26

Handwritten musical score on aged paper. The score consists of several staves. The top staff is a vocal line starting with a treble clef and a key signature of one sharp (F#). It begins with a circled '9' and the letter 'I.'. The second staff continues the vocal line with the instruction 'atempo'. The third staff is a piano accompaniment line with a treble clef. The fourth staff is another vocal line with a treble clef and a key signature of one sharp, starting with 'All^o moderato' and 'unis'. The fifth staff is a piano accompaniment line with a treble clef. The sixth staff is a piano accompaniment line with a bass clef. The seventh staff is a piano accompaniment line with a bass clef. The eighth staff is a piano accompaniment line with a bass clef. The ninth staff is a piano accompaniment line with a bass clef. The tenth staff is a piano accompaniment line with a bass clef. The score includes various musical notations such as notes, rests, and bar lines. Handwritten annotations include 'I.', 'rall', 'atempo', 'All^o moderato', 'unis', 'No. 25', 'act 4', and 'To Beque 26'. Measure numbers 11, 12, 13, 14, 15, 17, 18, 19, 20, 21, 22, 23, 24, 25, 26, 27, 28, 29, 30, 31, 32, 33, 34, 35, 36, 37, 38, 39, 40, 41, 42, 43, 44, 45, 46 are visible. There are also some circled numbers like '9' and '4'.

Entrée 5. *Al*



100

105

(B)

gato 26

All.^o vivo deciso 3 3 I.

N^o 25 b. out

ten

ten

unis

↑ 70

177

Handwritten musical score on ten staves. The notation includes treble clefs, a key signature of one sharp (F#), and a common time signature (C). The music consists of a single melodic line with various rhythmic values and phrasing. There are some blue pencil markings and a circled number '177' on the second staff.

250 - Menuet

No. 25 d. $\text{F}\#\text{C}$ 10

Handwritten musical score for a minuet. It shows two staves with treble clefs, a key signature of one sharp (F#), and a common time signature (C). The notation is mostly blank with some handwritten notes and a circled number '10'.

2.

I.

p

poco più mosso

unis

p

Allto

mf

All: non troppo

Handwritten musical notation on two staves. The first staff begins with a treble clef and a key signature of three sharps (F#, C#, G#). The second staff begins with a bass clef and the same key signature. The notation includes various note values and rests.

I.

Handwritten musical notation on two staves. The first staff begins with a treble clef and a key signature of two sharps (F#, C#). The second staff begins with a bass clef and the same key signature. The notation consists of a series of quarter notes.

12

uniso *Allo vivo.*

Handwritten musical notation on two staves. The first staff begins with a treble clef and a key signature of three sharps (F#, C#, G#). The second staff begins with a bass clef and the same key signature. The notation includes various note values and rests.

Handwritten musical notation on two staves. The first staff begins with a treble clef and a key signature of three sharps (F#, C#, G#). The second staff begins with a bass clef and the same key signature. The notation includes various note values and rests.

Handwritten musical notation on two staves. The first staff begins with a treble clef and a key signature of three sharps (F#, C#, G#). The second staff begins with a bass clef and the same key signature. The notation includes various note values and rests.

Handwritten musical notation on two staves. The first staff begins with a treble clef and a key signature of three sharps (F#, C#, G#). The second staff begins with a bass clef and the same key signature. The notation includes various note values and rests.

Handwritten musical notation on two staves. The first staff begins with a treble clef and a key signature of three sharps (F#, C#, G#). The second staff begins with a bass clef and the same key signature. The notation includes various note values and rests.

Handwritten musical notation on two staves. The first staff begins with a treble clef and a key signature of three sharps (F#, C#, G#). The second staff begins with a bass clef and the same key signature. The notation includes various note values and rests.

Presto.

Handwritten musical notation on two staves. The first staff begins with a treble clef and a key signature of three sharps (F#, C#, G#). The second staff begins with a bass clef and the same key signature. The notation includes various note values and rests.

unis.

Handwritten musical score for a single instrument, consisting of seven staves. The music is in treble clef with a key signature of three sharps (F#, C#, G#). It features various rhythmic values including eighth and sixteenth notes, rests, and dynamic markings like accents and 'tr.' (trill).

N. 26

All: giocoso

I.

Handwritten musical score for a two-part setting, consisting of two systems of staves. The first system has a treble clef staff with a key signature of three sharps and a 2/4 time signature, and a bass clef staff. The second system has a treble clef staff with a key signature of one sharp (F#) and a 2/4 time signature, and a bass clef staff. The music includes various rhythmic patterns and dynamic markings.

A

mis

turn

B

turn

Cut to A before

C *Quern*

turn fast

C

24

mmis
#

D

20 12

E

22
24
32

mf

mmis

6 16

m

22
7

F

Musical notation for the first system, consisting of two staves. The key signature is two sharps (F# and C#). The first staff contains a melody with triplet markings (3) and a dynamic marking of *f*. The second staff contains a bass line with triplet markings (3) and some slurs.

Musical notation for the second system, consisting of four staves. The first staff begins with the word *unis*. The notation includes various rhythmic values, slurs, and dynamic markings such as *f* and *ff*. There are also triplet markings (3) in the third and fourth staves.

A single staff of musical notation, mostly blank, with the word *unis* written at the beginning. The word *turn fast* is written in cursive across the middle of the staff.

Four empty musical staves, providing space for further notation.

unis **I** 24

Musical staff with treble clef, key signature of two sharps (F# and C#), and a series of eighth notes.

Musical staff with treble clef, key signature of two sharps, and a series of eighth notes. Includes a handwritten 'trm' and a '2' with a sharp sign.

Musical staff with treble clef, key signature of two sharps, and a series of eighth notes. Includes a handwritten 'trm'.

Musical staff with treble clef, key signature of two sharps, and a series of eighth notes. Includes a handwritten 'trm' and a circled 'G'.

Musical staff with treble clef, key signature of two sharps, and a series of eighth notes. Includes a handwritten 'trm'.

Musical staff with treble clef, key signature of two sharps, and a series of eighth notes. Labeled 'unis.'.

Musical staff with treble clef, key signature of two sharps, and a series of eighth notes.

Musical staff with treble clef, key signature of two sharps, and a series of eighth notes. Includes a circled 'H', 'Amol', and 'H'. Handwritten notes include 'yes I love you' and '2nd 12 20 10'.

30

Molto

5

Revised Bartok

25 →

29

Handwritten musical notation on two staves. The first staff has a treble clef and a key signature of two flats (B-flat, E-flat). The second staff has a bass clef. There are various notes, rests, and dynamic markings. A circled 'J' is written above the second staff.

Handwritten musical notation on two staves. The first staff has a treble clef and a key signature of two sharps (F#, C#). The second staff has a bass clef. The tempo marking 'a tempo' is written between the staves. There are some numbers written below the staves: 15, 4, 5, and 3.

Handwritten musical notation on two staves. The first staff has a treble clef and a common time signature (C). The second staff has a bass clef. The tempo marking 'Rit' is written above the first staff. There are some numbers written below the staves: 6, 3, 4, 6.

Handwritten musical notation on two staves. The first staff has a treble clef and a key signature of two sharps (F#, C#). The second staff has a bass clef. The tempo marking 'un poco anim.' is written above the first staff. There are some numbers written below the staves: 3, 4, 2.

Handwritten musical notation on two staves. The first staff has a treble clef and a key signature of two flats (B-flat, E-flat). The second staff has a bass clef. The tempo marking 'rit' is written above the first staff. There are some numbers written below the staves: 10, 7, 17.

173 poco pin

25 9

C

Musical staff with notes and dynamics. The first staff has a treble clef and a key signature of three flats. The second staff has a bass clef. Dynamics include *pp* and *f*.

Musical staff with notes and dynamics. The first staff has a treble clef and a key signature of two flats. The second staff has a bass clef. Dynamics include *f* and *rit*.

Musical staff with notes and dynamics. The first staff has a treble clef and a key signature of two flats. The second staff has a bass clef. Dynamics include *f* and *rit*. A red circle highlights the word *Allegro* and the number 17. A red circle highlights the word *Mod.* and the number 10. A red line connects the two circles.

Musical staff with notes and dynamics. The first staff has a treble clef and a key signature of two flats. The second staff has a bass clef. Dynamics include *f* and *rit*.

Musical staff with notes and dynamics. The first staff has a treble clef and a key signature of two flats. The second staff has a bass clef. Dynamics include *f* and *rit*.

Musical staff with notes and dynamics. The first staff has a treble clef and a key signature of two flats. The second staff has a bass clef. Dynamics include *f* and *rit*. A box labeled **B** contains the text *All: giocoso*. A box labeled **G** contains the text *All: furioso*. The number 20 is written below the staff.

ff to *co*

rit

Handwritten musical notation on a five-line staff. The top staff contains a melodic line with eighth and sixteenth notes, and a key signature of one sharp (F#). The bottom staff contains a bass line with rests.

Handwritten musical notation on a five-line staff. The top staff continues the melodic line. A faint red circle containing the number '14' is visible in the middle of the staff.

Handwritten musical notation on a five-line staff. The top staff continues the melodic line. The bottom staff contains rests.

Handwritten musical notation on a five-line staff. The top staff continues the melodic line. The bottom staff contains rests.

Handwritten musical notation on a five-line staff. The top staff contains notes with dynamic markings: *tr.*, *fp*, *fp*, *f*. A circled 'C' and the number '12' are written to the right. The bottom staff contains notes with dynamic markings: *f*, *f*, *f*.

Handwritten musical notation on a five-line staff. The top staff contains notes with dynamic markings: *f*, *f*, *f*. The bottom staff contains notes with dynamic markings: *f*, *f*, *f*. The word *rit.* is written above the staff.

119

op. 11

All. giocoso

Lo stesso tempo

82 *allegro*

(27)

(420)

(14)

Handwritten musical notation on a grand staff. The right hand contains a melodic line with notes and rests. The left hand contains a bass line with notes and rests. The key signature is one sharp (F#).

allegro

181 *Lo stesso tempo*

Handwritten musical notation on a grand staff. The right hand contains a melodic line with notes and rests. The left hand contains a bass line with notes and rests. The key signature is one sharp (F#).

2 **J** 3

Handwritten musical notation on a grand staff. The right hand contains a melodic line with notes and rests. The left hand contains a bass line with notes and rests. The key signature is one sharp (F#). The word "rit" is written below the first measure of the right hand.

1 **K** 11 82

Handwritten musical notation on a grand staff. The right hand contains a melodic line with notes and rests. The left hand contains a bass line with notes and rests. The key signature is one sharp (F#). The word "rit" is written below the first measure of the right hand.

Handwritten musical notation on a grand staff. The right hand contains a melodic line with notes and rests. The left hand contains a bass line with notes and rests. The key signature is one sharp (F#). The word "rit" is written below the first measure of the right hand.

(4)

Handwritten musical notation on a grand staff. The right hand contains a melodic line with notes and rests. The left hand contains a bass line with notes and rests. The key signature is one sharp (F#).

Finale

P. 4. ...
P. 5. ... here.

42 ...
53 ...
63 ...
80 ...
11 ...
31 ...

c.

Handwritten musical notation on the left edge of the page, including staves and notes.

Handwritten text, possibly a title or section name, written diagonally across the page.

