



LIBRARIES

UNIVERSITY OF WISCONSIN-MADISON

Site 4121: Lone Rock, Richland County, Township 8N, Range 2E, Section 11. 1954-08-18

[s.l.]: [s.n.], 1954-08-18

<https://digital.library.wisc.edu/1711.dl/HJXYRJ3FON72F8P>

This material may be protected by copyright law (Title 17, US Code).

For information on re-use see:

<http://digital.library.wisc.edu/1711.dl/Copyright>

The libraries provide public access to a wide range of material, including online exhibits, digitized collections, archival finding aids, our catalog, online articles, and a growing range of materials in many media.

When possible, we provide rights information in catalog records, finding aids, and other metadata that accompanies collections or items. However, it is always the user's obligation to evaluate copyright and rights issues in light of their own use.

STAND RECORD

FORESTS

Stand No. 4121

Name: Lone Rock

County: Richland

Date: Aug 18, 1954

Size of Stand: 40 A.

Forest Type: Flood plain hardwoods

Topography: Ridges and sloughs

Locality:

T: 8N R: 2E

Sec: 11

NW: SW

Observers: Ware, Bray

Size of Area Sampled: 10 A.

Soil Type:

Slope:

Directions

Condition of Stand:

No apparent recent disturbance other than signs of fire are present. Much sand deposition from river overflow. Some of swamp white oaks show signs of bur and white oak introgression.

Open Grown Trees: Many

75% Canopy:

Stumps:

- | | | | |
|----|----|----|-----|
| 1. | 4. | 7. | 10. |
| 2. | 5. | 8. | 11. |
| 3. | 6. | 9. | 12. |

Soil Data:

	pH	N	P	K	Ca	Mg	Org. Mat.	Colloids	W.H.C.
A ₀									
A ₁									
A ₂									
B									

DEPTH

CHARACTERISTICS (Color, Texture, Structure, etc.)

A₀ Little or no profile

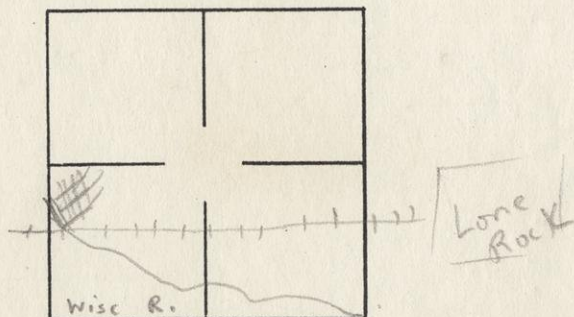
A₁

A₂

B

Parent Material: Sand

Map:



STATION NO.	1	2	3	4	5	6	7	8	9	10
Acer negundo										
A. saccharinum			1			30			130	
A. saccharum										
Betula nigra								340		
Carya cordiformis	1	30				11		11	25	1
Celtis occident.							11			
Crataegus sp.										
Fraxinus americ.										
F. nigra										
F. pennsylvanica		1			30 15				1	100
Gleditsia triacan.										
Gymnocladus dioica										
Juglans cinerea										
Platanus occident.										
Populus deltoides										
P. tremuloides										
Prunus serotina										
Quercus bicolor	30	340	200 18	50 25	2	75 75	40	2	250	180
Q. rubra										
Robinia pseudo.										
Salix nigra										
Tilia americana										
Ulmus americana	500									
U. rubra										
6 vel								1		
Distance	27	36	9	6	15	13	14	35	21	45

Large
760

Presence or Frequency
(Common species only)

FLOOD-PLAIN HARDWOODS

Stand No. 4/21
Quadrat No.

PRESENCE

Adiantum pedatum
Agrimonia grypsosepala
Allium canadense
Allium tricoccum
Amphicarpa bracteata
Anemone canadensis
Anemone virginiana
Aralia nudicaulis
Arenaria lateriflora
Arisaema atrorubens
Arisaema dracontium
Asarum canadense
Aster lateriflorus
Aster simplex
Athyrium filix-femina
Athyrium thelypteroides
Boehmeria cylindrica
Brachyelytrum erectum
Caltha palustris
Campanula americana
Carex crinita
Carex grayii
Carex intumescens
Carex lupulina
Carex normalis
Carex vupinoidea
Cephalanthus occidentalis
Cicuta maculata
Circaea quadrisulcata
Cirsium altissimum
Convolvulus sepium
Cornus femina
Cornus obliqua
Cornus rugosa
Cornus stolonifera

Corylus americana
Cryptotaenia canadensis
Desmodium glutinosum
Dioscorea villosa
Echinocystis lobata
Fragaria virginiana
Galium aparine
Galium concinnum
Galium obtusum
Galium triflorum
Geranium maculatum
Geum canadense
Glyceria striata
Hydrophyllum virginianum
Ilex verticillata
Impatiens capensis
Iris virginica
Lactuca biennis
Laportea canadensis
Leersia oryzoides
Lobelia cardinalis
Lycopus americanus
Lycopus uniflorus
Lysimachia ciliata
Lysimachia nummularia
Menispermum canadense
Onoclea sensibilis
Osmorhiza claytoni
Osmorhiza longistylis
Parthenocissus inserta
Phlox divaricata
Phryma leptostachya
Physostegia virginiana
Podophyllum peltatum
Polemonium reptans

Polygonatum canaliculatum
Prenanthes alba
Ranunculus abortivus
Ranunculus septentrionalis
Rhus radicans
Ribes americanum
Ribes cynosbati
Ribes missouriense
Rorippa islandica
Rudbeckia laciniata
Rumex verticillatus
Sambucus canadensis
Sanguinaria canadensis
Sanicula gregaria
Smilacina racemosa
Smilacina stellata
Smilax ecirrhata
Smilax herbacea
Smilax tannoides
Solanum dulcamara
Stachys palustris
Teucrium canadense
Thalictrum dasycarpum
Thalictrum dioicum
Tovara virginiana
Trillium flexipes
Uvularia sessilifolia
Veronicastrum virginianum
Viburnum lentago
Viola canadensis
Viola conspersa
Viola cucullata
Viola pubescens
Vitis riparia
Zanthoxylum americanum

Additional species:

Chelone glabra

Bromus catherinus

Muhlenbergia frondosa

Andropogon gerardii

Presence or Frequency
(Common species only)

FLOOD-PLAIN HARDWOODS

Stand No. 4128
Quadrat No.

- 1-5
- Adiantum pedatum
 - Agrimonia gryposepala
 - Allium canadense
 - Allium tricoccum
 - Amphicarpa bracteata
 - Anemone canadensis
 - Anemone virginiana
 - Aralia nudicaulis
 - Arenaria lateriflora
 - Arisaema atrorubens
 - Arisaema dracontium
 - Asarum canadense
 - Aster lateriflorus
 - Aster simplex
 - Athyrium filix-femina
 - Athyrium thelypteroides
 - Boehmeria cylindrica
 - Brachyelytrum erectum
 - Caltha palustris
 - Campanula americana
 - Carex crinita
 - Carex grayii
 - Carex intumescens
 - Carex lupulina
 - Carex normalis
 - Carex vupinoidea
 - Cephalanthus occidentalis
 - Cicuta maculata
 - Circaea quadrisulcata
 - Cirsium altissimum
 - Convolvulus sepium
 - Cornus femina
 - Cornus obliqua
 - Cornus rugosa
 - Cornus stolonifera

- Corylus americana
- Cryptotaenia canadensis
- Desmodium glutinosum
- Dioscorea villosa 3
- Echinocystis lobata
- Fragaria virginiana
- Galium aparine
- Galium concinnum
- Galium obtusum
- Galium triflorum
- Geranium maculatum
- Geum canadense
- Glyceria striata
- Hydrophyllum virginianum
- Ilex verticillata
- Impatiens capensis
- Iris virginica
- Lactuca biennis
- Laportea canadensis
- Leersia oryzoides
- Lobelia cardinalis
- Lycopus americanus
- Lycopus uniflorus
- Lysimachia ciliata
- Lysimachia nummularia
- Menispermum canadense 1345
- Onclea sensibilis
- Osmorhiza claytoni
- Osmorhiza longistylis
- Parthenocissus inserta 2
- Phlox divaricata
- Phryma leptostachya
- Physostegia virginiana
- Podophyllum peltatum
- Polemonium reptans

- Polygonatum canaliculatum
- Prenanthes alba
- Ranunculus abortivus
- Ranunculus septentrionalis
- Rhus radicans
- Ribes americanum
- Ribes cynosbati
- Ribes missouriense
- Rorippa islandica
- Rudbeckia laciniata
- Rumex verticillatus
- Sambucus canadensis
- Sanguinaria canadensis
- Sanicula gregaria
- Smilacina racemosa
- Smilacina stellata 2
- Smilax ecirrhata
- Smilax herbacea
- Smilax tannoides
- Solanum dulcamara
- Stachys palustris
- Teucrium canadense / 245
- Thalictrum dasycarpum
- Thalictrum dioicum
- Tovara virginiana
- Trillium flexipes
- Uvularia sessilifolia
- Veronicastrum virginianum
- Viburnum lentago
- Viola canadensis
- Viola conspersa
- Viola cucullata
- Viola pubescens
- Vitis riparia 5
- Zanthoxylum americanum 5

Additional species:

Culmacis 23

Elymus 125
Solidago 1345
Rubus (Blue river) 12
Panicum 3
Eragrostis 3
Rhynchos 3
Panicum 345
Elymus 9

swamp white 95
Stachys 3
Clematis 5

Presence or Frequency
(Common species only)

FLOOD-PLAIN HARDWOODS

Stand No. 4121
Quadrat No.

6-10

Adiantum pedatum
Agrimonia gryposepala
Allium canadense
Allium tricoccum
Amphicarpa bracteata
Anemone canadensis
Anemone virginiana 4
Aralia nudicaulis
Arenaria lateriflora
Arisaema atrorubens
Arisaema dracontium
Asarum canadense
Aster lateriflorus
Aster simplex
Athyrium filix-femina
Athyrium thelypteroides
Boehmeria cylindrica
Brachyelytrum erectum
Caltha palustris
Campanula americana
Carex crinita
Carex grayii
Carex intumescens
Carex lupulina
Carex normalis
Carex vupinoidea
Cephalanthus occidentalis
Cicuta maculata
Circaea quadrisulcata
Cirsium altissimum
Convolvulus sepium
Cornus femina
Cornus obliqua
Cornus rugosa
Cornus stolonifera

Corylus americana
Cryptotaenia canadensis
Desmodium glutinosum
Dioscorea villosa
Echinocystis lobata
Fragaria virginiana
Galium aparine
Galium concinnum
Galium obtusum
Galium triflorum
Geranium maculatum
Geum canadense
Glyceria striata
Hydrophyllum virginianum
Ilex verticillata
Impatiens capensis
Iris virginica
Lactuca biennis
Laportea canadensis
Leersia oryzoides
Lobelia cardinalis
Lycopus americanus
Lycopus uniflorus
Lysimachia ciliata
Lysimachia nummularia
Menispermum canadense 1234
Onoclea sensibilis
Osmorhiza claytoni
Osmorhiza longistylis
Parthenocissus inserta
Phlox divaricata
Phryma leptostachya
Physostegia virginiana
Podophyllum peltatum
Polemonium reptans

Polygonatum canaliculatum
Prenanthes alba
Ranunculus arbortivus
Ranunculus septentrionalis
Rhus radicans 234
Ribes americanum
Ribes cynosbati
Ribes missouriense
Rorippa islandica
Rudbeckia laciniata
Rumex verticillatus
Sambucus canadensis
Sanguinaria canadensis
Sanicula gregaria
Smilacina racemosa
Smilacina stellata
Smilax ecirrhata
Smilax herbacea
Smilax tamnoides
Solanum dulcamara
Stachys palustris
Teucrium canadense 135
Thalictrum dasycarpum
Thalictrum dioicum
Tovara virginiana
Trillium flexipes
Uvularia sessilifolia
Veronicastrum virginianum
Viburnum lentago
Viola canadensis
Viola conspersa
Viola cucullata
Viola pubescens
Vitis riparia
Zanthoxylum americanum 12345

Additional species:

Panicum virg 13

Solidago sp 134

Panicum cont 1

Elymus virg 12345

Yellowhead milk-weed 24

Q. bicolor 2

Helianthus 345 (American) (Prunus 5)

Bluegrass 5

Spartina 5

Ambrosia art 5

Presence or Frequency
(Common species only)

FLOOD-PLAIN HARDWOODS

Stand No. 4121
Quadrat No.

11-55

- Adiantum pedatum
- Agrimonia grypsosepala
- Allium canadense
- Allium tricoccum
- Amphicarpa bracteata
- Anemone canadensis
- Anemone virginiana
- Aralia nudicaulis
- Arenaria lateriflora
- Arisaema atrorubens
- Arisaema dracontium
- Asarum canadense
- Aster lateriflorus
- Aster simplex
- Athyrium filix-femina
- Athyrium thelypteroides
- Boehmeria cylindrica
- Brachyelytrum erectum
- Caltha palustris
- Campanula americana
- Carex crinita
- Carex grayii
- Carex intumescens
- Carex lupulina
- Carex normalis
- Carex vupinoidea
- Cephalanthus occidentalis
- Cicuta maculata
- Circaea quadrisulcata
- Cirsium altissimum
- Convolvulus sepium
- Cornus femina
- Cornus obliqua
- Cornus rugosa
- Cornus stolonifera

- Corylus americana
- Cryptotaenia canadensis
- Desmodium glutinosum
- Dioscorea villosa
- Echinocystis lobata
- Fragaria virginiana
- Galium aparine
- Galium concinnum
- Galium obtusum
- Galium triflorum
- Geranium maculatum
- Geum canadense
- Glyceria striata
- Hydrophyllum virginianum
- Ilex verticillata
- Impatiens capensis
- Iris virginica
- Lactuca biennis
- Laportea canadensis
- Leersia oryzoides
- Lobelia cardinalis
- Lycopus americanus
- Lycopus uniflorus
- Lysimachia ciliata
- Lysimachia nummularia
- Menispermum canadense
- Onoclea sensibilis
- Osmorhiza claytoni
- Osmorhiza longistylis
- Parthenocissus inserta
- Phlox divaricata
- Phryma leptostachya
- Physostegia virginiana
- Podophyllum peltatum
- Polemonium reptans

- Polygonatum canaliculatum
- Prenanthes alba
- Ranunculus abortivus
- Ranunculus septentrionalis
- Rhus radicans
- Ribes americanum
- Ribes cynosbati
- Ribes missouriense
- Rorippa islandica
- Rudbeckia laciniata
- Rumex verticillatus
- Sambucus canadensis
- Sanguinaria canadensis
- Sanicula gregaria
- Smilacina racemosa
- Smilacina stellata
- Smilax ecirrhata
- Smilax herbacea
- Smilax tamnoides
- Solanum dulcamara
- Stachys palustris
- Teucrium canadense
- Thalictrum dasycarpum
- Thalictrum dioicum
- Tovara virginiana
- Trillium flexipes
- Uvularia sessilifolia
- Veronicastrum virginianum
- Viburnum lentago
- Viola canadensis
- Viola conspersa
- Viola cucullata
- Viola pubescens
- Vitis riparia
- Zanthoxylum americanum

Additional species: *see seedlings*

- Panicum virg 13
- Elymus virg 12
- Chenopodium 123
- Solidago sp 123
- Ambrosia art 1
- Calamagrostis 35
- Helianthus 12345
- yellowhead 13
- long leafed coat 1
- (Arenaria)
- Burdock (blue stem) 3
- Spartina 3
- Panicum sp 34
- Elymus virg 3
- Equisetum arvense 3
- Rosa 4
- Panicum capillare 4

Presence or Frequency
(Common species only)

FLOOD-PLAIN HARDWOODS

Stand No. 4121
Quadrat No.

16-20

- Adiantum pedatum
- Agrimonia gryposepala
- Allium canadense
- Allium tricoccum
- Amphicarpa tracteada
- Anemone canadensis
- Anemone virginiana
- Aralia nudicaulis
- Arenaria lateriflora
- Arisaema atrorubens
- Arisaema dracontium
- Asarum canadense
- Aster lateriflorus
- Aster simplex
- Athyrium filix-femina
- Athyrium thelypteroides
- Boehmeria cylindrica
- Brachyelytrum erectum
- Caltha palustris
- Campanula americana
- Carex crinita
- Carex grayii
- Carex intumescens
- Carex lupulina
- Carex normalis
- Carex vupinoidea
- Cephalanthus occidentalis
- Cicuta maculata
- Circaea quadrisulcata
- Cirsium altissimum
- Convolvulus sepium
- Cornus femina
- Cornus obliqua
- Cornus rugosa
- Cornus stolonifera

- Corylus americana
- Cryptotaenia canadensis
- Desmodium glutinosum
- Dioscorea villosa
- Echinocystis lobata
- Fragaria virginiana
- Galium aparine
- Galium concinnum
- Galium obtusum
- Galium triflorum
- Geranium maculatum
- Geum canadense
- Glyceria striata
- Hydrophyllum virginianum
- Ilex verticillata
- Impatiens capensis
- Iris virginica
- Lactuca biennis
- Laportea canadensis
- Leersia oryzoides
- Lobelia cardinalis
- Lycopus americanus
- Lycopus uniflorus
- Lysimachia ciliata
- Lysimachia nummularia
- Menispermum canadense
- Oncoclea sensibilis
- Osmorhiza claytoni
- Osmorhiza longistylis
- Parthenocissus inserta
- Phlox divaricata
- Phryma leptostachya
- Physostegia virginiana
- Podophyllum peltatum
- Polemonium reptans

- Polygonatum canaliculatum
- Prenanthes alba
- Ranunculus abortivus
- Ranunculus septentrionalis
- Rhus radicans
- Ribes americanum
- Ribes cynosbati
- Ribes missouriense
- Rorippa islandica
- Rudbeckia laciniata
- Rumex verticillatus
- Sambucus canadensis
- Sanguinaria canadensis
- Sanicula gregaria
- Smilacina racemosa
- Smilacina stellata
- Smilax ecirrhata
- Smilax herbacea
- Smilax tamnoides
- Solanum dulcamara
- Stachys palustris
- Teucrium canadense
- Thalictrum dasycarpum
- Thalictrum dioicum
- Tovara virginiana
- Trillium flexipes
- Uvularia sessilifolia
- Veronicastrum virginianum
- Viburnum lentago
- Viola canadensis
- Viola conspersa
- Viola cucullata
- Viola pubescens
- Vitis riparia
- Zanthoxylum americanum

Handwritten numbers and marks: 5, 25, 12345, 123, 18, 24

Additional species:

Handwritten notes for additional species:

- Phegodes 14
- Elymus canadensis 13/4
- Solidago 1 24 5
- Helianthus 12
- Calamagrostis 14
- Elymus virg 2
- Ranunculus virg 2
- Equisetum arvense 24
- Rosa 3
- Saggonaria 3
- swamp white 34
- long leaf Carex 3
- Spartina 4 5
- Clematis 4
- Andropogon grandis 5