



LIBRARIES

UNIVERSITY OF WISCONSIN-MADISON

Annual reports of the officers of the Madison Park and Pleasure Drive Association for the years ending December 31, 1920, and December 31, 1921, respectively, with reports of annual meetings held May ...

Madison, Wisconsin: [s.n.], [s.d.]

<https://digital.library.wisc.edu/1711.dl/P7NWUZALYHOUB80>

Based on date of publication, this material is presumed to be in the public domain.

Original material owned by Madison Public Library.

For information on re-use see:

<http://digital.library.wisc.edu/1711.dl/Copyright>

The libraries provide public access to a wide range of material, including online exhibits, digitized collections, archival finding aids, our catalog, online articles, and a growing range of materials in many media.

When possible, we provide rights information in catalog records, finding aids, and other metadata that accompanies collections or items. However, it is always the user's obligation to evaluate copyright and rights issues in light of their own use.

MADISON FREE LIBRARY.
MADISON, WIS.

**The Madison Park and
Pleasure Drive Association**

ANNUAL REPORTS FOR 1921-1922



MADISON FREE LIBRARY,
MADISON, WIS.



OLBRICH PURCHASE

Annual Reports

of the

Officers of the

Madison Park and Pleasure Drive Association

BRITISH
FREE LIBRARY
MADISON PARK

For the Years Ending December 31, 1920, and
December 31, 1921, Respectively

With

Reports of Annual Meetings

Held May 16, 1921, and April 25, 1922.



YOUNG & CO.

Engravings by
BUREAU OF ENGRAVING,
MINNEAPOLIS

*
917.758
M265
1921-1929

MADISON FREE LIBRARY
MADISON, WIS.

Memorial

Dr. Charles H. Vilas

WHEREAS, since the last annual meeting of the Madison Park and Pleasure Drive Association Dr. Charles H. Vilas, for many years an honored citizen of Madison, has departed this life, and

WHEREAS, this association and the City of Madison is greatly indebted to him for his benefactions, especially in connection with the animal exhibits in Henry Vilas Park,

NOW, THEREFORE, BE IT RESOLVED by the members of the Madison Park and Pleasure Drive Association, in annual meeting assembled, that we recognize with appreciation and gratitude the gifts to the Madison Park and Pleasure Drive Association by Dr. Charles H. Vilas.

BE IT FURTHER RESOLVED that a copy of this resolution be spread upon our records as a permanent memorial of our appreciation and that a copy of the same be published in the city papers.

Adopted May 16, 1921.

(LM) 80072



BURROWS PARK

The Annual Meeting

of the

Madison Park and Pleasure Drive Association

Held May 16, 1921

The annual meeting of the Madison Park and Pleasure Drive Association was held at Room A, in the City Library, May 16, 1921.

The meeting was called to order by Ernest N. Warner, President.

The report of the treasurer was read and placed on file.

The report on behalf of the board of directors was made by President Ernest N. Warner.

A resolution was offered by Mr. Frank W. Hoyt on the death of Dr. Charles H. Vilas, which resolution will appear in this report.

A resolution was offered by Mr. John L. Bourke and unanimously adopted favoring the purchase by the city of the lake shore park area offered by Mr. Olbrich.

On Motion of Mayor I. M. Kittleson the following officers were elected for the ensuing year:

President, Ernest N. Warner.

Vice-President, Charles N. Brown.

Secretary, John L. Bourke.

Treasurer, Frank W. Hoyt.

Directors, Corydon G. Dwight, Frank W. Hoyt, Arthur X. Merz, Fred M. Schlingen and John Stock, Jr.

On motion the meeting adjourned.

President's Report

1921

Made on Behalf of the Board of Directors
of the

Madison Park and Pleasure Drive Association

To the Members of the Madison Park and Pleasure Drive Association:

We are met on this twenty-ninth anniversary of the work of the Madison Park and Pleasure Drive Association to listen to the reports of the officers for the preceding year and to select officers for the ensuing year.

The report of the city auditor shows budget appropriation for the parks for the year 1920 of \$35,545.75, expenditures \$34,689.00, leaving an unexpended balance for last year of \$856.75. This item is a little more than offset, however, by the auditor's report with respect to the appropriations for the zoo. The budget provided \$27,084.10 and there were expended in maintenance of the zoo last year \$28,576.23, showing an overdraft in that department of \$1,492.13 and a net overdraft in the park department including the zoo of \$635.38.

The report of Mr. Hoyt, our treasurer, shows subscriptions (including \$3,150 reported from the City of Madison by the city auditor) \$8,535.50 and disbursements \$8,348.91, leaving a balance on hand Dec. 31, 1920, in the subscription account of \$186.59.

The detailed expenditures by parks will be published in the annual report and will sufficiently analyze the work done and money expended in each park and in the zoo.

The administration of the park area within the city the past year has been merely one of routine. Tenney Park

awaits at some convenient time the construction of a bridge from Sherman Avenue to the island and the construction of a shelter house. This park is adequately supplying the park needs of the portion of the city in which it is situated. The bathhouse is adequately manned and liberally patronized. The island has been used for play, including baseball. It has served a great need in this respect and no complaints have reached the board of directors of this use of the park.

Brittingham Park and Henry Vilas Park and the small areas have been well cared for and freely used. The concrete road along the outer edge of the island in Henry Vilas Park was paid for during the past year although the road was built in the fall of 1919. During the past year a macadam shoulder four feet on either side of the twelve-foot concrete road was constructed. There was also built in Henry Vilas Park a macadam road from the dens past the new lock to the bridge spanning the canal at the entrance of Capitol Avenue leading to Lake Forest.

The city council has provided in the budget for this year \$1,200 to be used in keeping ice clear for skating. This is a substantial increase over former appropriations for this purpose and seems an exceedingly wise appropriation to be made for this popular and healthful sport.

The city council is annually appropriating a sum of money for the care of street ends running down to the lakes and to the extent that the council makes appropriations this board is pleased to park and care for these lake approaches.

Contributions on the part of the city and individuals towards restoring the drives were most generous in 1920. The board of directors was enabled to oil both Lake Mendota and Farwell Drives throughout their length last year. The expense of oiling was so heavy that it was impossible last year to do the necessary patching in addition to the oiling. The subscriptions for this year include \$3,000 by the City of Madison and up to the present time \$3,090.50 by individuals. A new concrete culvert has been constructed at the foot of the hill just east of Prof. Parkinson's cottage on Lake Mendota Drive and another has been constructed just beyond the

Menges' cottage on Farwell Drive. The patching of the rough places in Farwell Drive is now proceeding. It is believed by the board of directors that in addition to doing such repairing on Lake Mendota and Farwell Drives as will be necessary there can be built a piece of permanent roadway on the Owen Parkway Drive from the end of the present macadem to the Mineral Point road, a distance of a quarter of a mile, thus completing the permanent hard surfaced improvement of the drive throughout the extent of Owen Parkway from the entrance of this parkway at the cemeteries to the Mineral Point road, a distance of about one and one-half miles.

Your officers and employees are involved in constant struggle to prevent vandalism on the drives and to a lesser extent in the parks within the city. Following arrests of students for cutting trees for prom decorations there was held a meeting of the Interfraternity Council to which the president was invited. There was a large attendance of fraternity men and action was taken pledging the support of the fraternities to the work of the association. Promises were given that the fraternities would undertake to instill in their members loyalty to our work and financial and moral support. Subsequently each fraternity took action in harmony with the action of the Interfraternity Council and many of the fraternities have made financial contribution to the work for this year and no complaint of vandalism on the part of fraternities or fraternity men has come to the attention of your board since that date. Our work of education of university young people, however, is not yet complete. The matter has not as yet been formally brought before the young women of the university and numerous recent complaints have been made of vandalism on the part of young women students. The university authorities have proposed to grow suitable shrubs, flowers and evergreens for decoration and to provide for the student body of the university decorations for their parties at nominal cost to assist constructively in correcting such abuses of the plantings along the drives.

Reference should be made to the gift of Mrs. Mary C. Stewart for a fountain to be erected in memory of her daughter, Annie C. Stewart. This fund has been kept at interest

and now amounts to \$3076.48. The contract has been let for the erection of the fountain at the crest of the hill in the new addition to Henry Vilas Park. The bowl of the fountain has been already constructed. The two models for the rim of the bowl have arrived in Madison. The central figure alone is yet to come. When completed this fountain will be a work of art and of value far in excess of the amount left by Mrs. Stewart or the contract price for the fountain.

Since our meeting of a year ago there has passed from our midst Dr. Charles H. Vilas, long an interested and liberal contributor to Madison's civic enterprises. Dr. Vilas made the large gift of the Lion House located in Henry Vilas Park and was a liberal contributor to the work of this association in its various activities.

The park program in Madison as related to the completed parks is well defined, well supported by the city and entirely acceptable to the people of Madison. There is needed new vision, courage, and constructive energy looking towards the acquirement and development of additional park areas, particularly in the eastern portion of our city. Spaight Street Park should be enlarged and developed and a park at the eastern limits of the city, preferably in that area offered to the city by Mr. Olbrich, should be secured and developed. The board of directors renews the recommendation that it has made at former meetings of the members of the association that every possible effort should be expended to secure to the city the Olbrich offerings or such portion of them as to the city may seem best.

This meeting of the association concludes ten years of continuous service of Mr. Hoyt, Mr. Schlimgen and myself as directors of the Madison Park and Pleasure Drive Association. Mr. Hoyt and Mr. Schlimgen had served before. Mr. Charles N. Brown, for many years secretary of the association, gave the report for the board of directors at the meeting ten years ago. He reviewed the history of the association to that time, a period of nineteen years, and showed total voluntary contributions of \$273,826. The new total as of this date is \$359,099.33, an increase from this source during the last ten years of over \$86,000. In the report given in

1911 the amount of aid furnished by the city to that time was \$121,595.12. The report this year will show a total of city contributions up to the present year of \$593,860.10, an increase from this source during the last ten years of over \$472,000. The last assessment of the City of Madison, being the assessment for 1910, reported at the meeting in 1911, was \$31,400,000.00 and a tax levy for that year for park purposes of \$15,700.00. The assessment of the City of Madison for 1920 was \$81,160,311 and there is included in the budget for general park work under the auspices of the Madison Park and Pleasure Drive Association \$37,636.13 and on account of the zoo, also under the auspices of the Madison Park and Pleasure Drive Association, \$24,999.95, a total tax levy to be administered this year by this association of \$62,636.08. In addition to this there is a provision in the budget for Monona Park of \$5,873.55, or a total for park purposes in the City of Madison for this year of \$68,509.63. The report of 1911 shows voluntary contributions for 1911 of \$3,534.00. The voluntary contributions for 1921 to date are \$3,090.50.

In 1911 automobiles were only allowed on portions of the drives certain half days per week. The automobiles now are allowed free use of the drives and one scarcely finds horses in use on the drives or on the public roads.

Mrs. Vilas had tendered \$25,000 to the city on condition that it would purchase an addition to Henry Vilas Park, fill the low portion of the park, build a drive on the island and build bridges across the lagoons. Since 1911 all these things have been accomplished and Henry Vilas Park has been completed according to the original design and the enlarged plans proposed by Mrs. Vilas.

Ten years ago a few deer had been accepted by the board of directors of the Madison Park and Pleasure Drive Association to be placed in Henry Vilas Park. During the last ten years the Lion House has been erected, the Bird House, the animal cages and bear dens, and some four hundred specimens and at least twice that number of animals, birds and fish have been gathered in the zoo in Henry Vilas Park,

making it in all probability second to none in any city of the size of Madison in our country.

In Tenney Park an unfortunate controversy between Mr. D. K. Tenney, the principal donor to this park, and the board of directors of this association, had prevented the erection of a suitable bridge from either Marston Avenue or Sherman Avenue to the island. This matter has since been entirely adjusted and Mr. Tenney became the generous donor of the Marston Bridge spanning the lagoon from Marston Avenue to the island, costing nearly \$3,300, and by his will he provided for an annual contribution of \$500 per year to this association. These annual contributions are being set aside until a sufficient amount is obtained to erect a suitable bridge from Sherman Avenue to the island.

Since the meeting of ten years ago the familiar Assembly Grounds have been purchased by the City of Madison as an additional park to be known as Monona Park, at a cost to the city of \$40,000.

Through condemnation proceedings the title to Spaight Street Park has been obtained, costing the city, with other purchases for the same purpose, \$11,300.00.

The possession of Burrows Park came to this association April 1, 1911. A design for its improvement has since that date been adopted; the low portion has been filled and beginnings have been made toward the parking of this area by seeding and mowing the front portion, removing the fence adjacent to Sherman Avenue and making preliminary excavations for a driveway where indicated on the design adopted by this board.

The popularity and great use of our parks has almost wholly developed during the past ten years. Music was first furnished in the parks by voluntary band concerts in the summers of 1909 and 1910 and during the past ten years band concerts have been regularly provided in both Tenney Park and Henry Vilas Park.

The bathhouse and boathouse at Brittingham Park were first opened for use in 1910 and since then the bathhouse has been built in Tenney Park.

Until 1917 the City Council had failed to appropriate any funds for use in the maintenance of the drives outside the city limits but in the make up of its tax budget for 1916 the city provided "\$1,000 for the maintenance of the drives outside the city limits and provided further \$2,000.00 additional, conditioned upon a like amount being subscribed for this work outside the city limits." This provision by the city for funds to assist in maintaining the outside drives has continued since that time. The subscribers to the work of the association have annually provided an amount in excess of whatever amount the city has included in its budget for maintaining the drives.

Prior to 1911 a committee was appointed from this association to look towards the securing of a general park law that would enable the City of Madison or a Park District created by it to take over all the park and drive work in and about Madison and relieve the Madison Park and Pleasure Drive Association, a voluntary organization, of this work. It was not until 1915 that a suitable law was framed and passed to carry out this purpose. At its meeting in 1914 a plea for a greater Madison Park program was made by the presiding officer, Rev. Thomas B. Johnson, and at that meeting a committee of ten was appointed with authority to increase its membership to twenty-five to devise and secure, if possible, the passage of a suitable law for the creation of a park district in and about Madison. The committee held several meetings and finally secured the passage of Chapter 180, Laws of 1915, which was believed by the committee to be a suitable working law. The City of Madison can at any time by a majority vote of the Common Council create a Park District to comprise Madison and surrounding territory and when an ordinance should be passed, adopting the provisions of Chapter 180, Laws of 1915, a board of five park commissioners to be appointed by the mayor and confirmed by the city council would constitute the board of park commissioners. Under this law the board of directors of the Madison Park and Pleasure Drive Association "may by the unanimous vote of its board of directors, transfer to such board of park commissioners as trustees any parks, boulevards, or pleasure drives

or any gifts or grants therefor, over which its powers and jurisdiction extend under the provisions of said sections. Any property so transferred shall be held by such board of park commissioners subject to all the conditions and trusts under which it was held by such public park corporation." Notice of the passage of this law has been called to the attention of the mayor and the common council of the City of Madison but up to the present time they have not seen fit to pass such an ordinance but have annually appropriated adequate sums of money to the board of directors of this association to carry forward the park work. It would seem that the time must early come when the city will take over the park and boulevard work as a wholly public function. The members of this association and its board of directors have long looked forward earnestly to the time when the city would do this and thus afford the board of directors the opportunity to transfer the responsibilities of this voluntary association to such a public body.

Recently the board of directors has secured a steel safe cabinet and other cabinet files and has assembled all deeds, leases, contracts, abstracts, maps, records, cuts, films, and slides relating to the affairs of the association and has them permanently filed and indexed for safe keeping and ready reference. Reports of the association's work have been annually made and biennially reports have been published with illustrations covering two year's work of the association. These reports during the past ten years have conformed to the style and so far as possible to the quality of the reports published during the constructive period of the association's activities.

Respectfully submitted,

ERNEST N. WARNER,
President.



BEAR DENS—POLAR BEAR—(*Thalarectos maritimus*)

The Annual Meeting
of the
Madison Park and Pleasure Drive
Association

Held April 25, 1922

The annual meeting of the Madison Park and Pleasure Drive Association was held at Room A, in the City Library, April 25, 1922.

The meeting was called to order and at the request of the board of directors Ernest N. Warner presided and made the annual report on their behalf.

The report of the treasurer was read and placed on file.

On motion of Mr. M. B. Olbrich the following officers were elected for the ensuing year:

President, Ernest N. Warner.

Vice-President, Charles N. Brown.

Secretary, John L. Bourke.

Treasurer, Frank W. Hoyt.

Directors, Corydon G. Dwight, Frank W. Hoyt, Herbert C. Schenk, Fred M. Schlingen and John Stock, Jr.

On motion the meeting adjourned.



BURROWS PARK

President's Report

1922

Made on Behalf of the Board of Directors
of the
Madison Park and Pleasure Drive Association

To the Members of the Madison Park and Pleasure Drive Association:

This is the thirtieth anniversary of the work of the Madison Park and Pleasure Drive Association.

There was expended last year under the auspices of the board of directors for parks \$33,670.70 provided by the city, in addition to \$4,013.83 contributed by subscribers, making a total for parks and pleasure drives of \$37,684.53; for the zoo \$23,038.59 provided by the city and \$1,551.25 from tag day and other contributions, total for zoo \$24,589.84, a total expenditure under your board of directors for the parks and zoo \$62,274.37. In both the park department and zoo department the disbursements were well within the budget provisions leaving in each department unexpended balances. Labor costs and the cost of feed were somewhat less than the estimates at the time the budget was prepared. At the close of the year there was in the hands of Mr. Hoyt, the treasurer of the subscription account, for drives, \$3,033.82 and an unexpended balance in the zoo account of \$636.23. A contract had been let for work on Owen Parkway which was not completed last year and which, when completed this spring, will absorb the unexpended drive subscription balance in the hands of the treasurer. The balance sheet by the city auditor as well as the itemized account of the treasurer will appear in the published report.

A new band stand was built in Tenney Park during the past season and the foot bridge reconstructed from Thornton Avenue to the island, but the greatest improvement in this park was the building of a thirty-foot asphalt driveway along the Yahara River from Sherman Avenue to Williamson Street by the city at a cost of \$31,723.16. This is an improvement that has been urged for many years and the city is to be congratulated on having built this fine, broad, surfaced roadway over this course so much used. Substantial improvements were made at the bathhouse. The bathing beach was freely patronized. Swimming instruction and playground supervision were provided by the board of education.

Brittingham Park is a playgrounds park and although the area is not large it is freely and increasingly used by the children of the neighborhood. Both the boathouse and the bathhouse were manned as usual and taxed to capacity. Instruction in swimming and playground supervision were provided by the board of education.

There were no considerable expenditures for new work in Henry Vilas Park the past year. The island having been put in excellent condition is being brought into use. The zoo is not only an attraction of Henry Vilas Park. It is a Southern Wisconsin attraction and brings people from all parts of this portion of the state to visit the zoo, the park and Madison. The employees in this park were having difficulty last summer in keeping the cars from crowding onto the lawn and they were directed to take the license numbers of cars that were driven on the lawn in violation of the park rules. The records of the two Sundays will be of interest. They emphasize first that it is not the Madison people that crowd onto the lawns. It evidences that we have guests from all parts of the state. On July 31st there were 67 cars that could not be accommodated on the roads and they were driven on the lawn. Only one of them was a Madison car. All others were from distant towns bringing guests to our city to spend the day and enjoy the park and the zoo. They came from Blue Mounds, Stoughton, Arlington, Cambridge, Black Earth, Columbus, Prairie du Sac, Hollandale, Merri-

mack, Albany, Edgerton, Barneveld, Orfordville, Fennimore, Fort Atkinson, Lake Mills and other towns of like distances away from Madison. Again on August 7th a record of license numbers were kept and efforts to keep the people off the lawn were perhaps not quite as vigorous as at other times and on that day 275 cars drove on the lawn. Of this number less than a dozen were Madison cars. One was from Minnesota, 3 from Missouri, 1 Michigan, 2 South Dakota, 2 Nebraska, 1 Texas, 5 Iowa, 10 Indiana, 25 Illinois and 225 Wisconsin and the cars from Wisconsin were from all parts of the state. The ground was hard and no special damage could be done on that date and needless to say with all these guests in the city enjoying our parks and drives no arrests were made and the story of these two Sundays but serves to illustrate the great popularity of the zoo.

Action was brought against the association by Celeste K. Burrows to recover Burrows Park on the ground that the association failed to comply with the conditions under which the property was given, namely "that they (association) shall forever keep and maintain the same as a public park to be always called and known as Burrows Park." The lower court decided against the contention of the claimant and the matter is now before the Supreme Court on appeal. As this report goes to press we are able to report the successful outcome of this suit. Title was confirmed in the Park and Pleasure Drive Association by the Supreme Court.

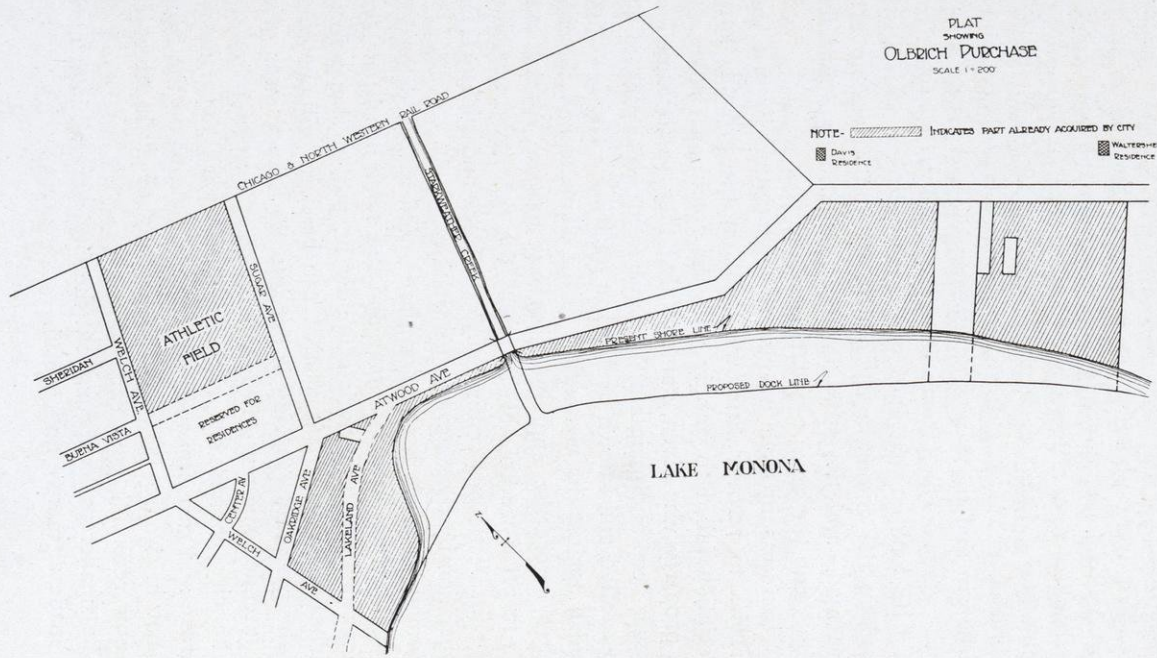
Something more than 3,000 yards of dirt was delivered to Spaight Street Park last year and the same has been leveled and graded and this park can now be put in shape for use and beautified in so far as that can be done without enlarging the park and carrying it out into the lake as was originally intended and for which a design has been prepared.

The city council has authorized the park department to improve and care for such street ends running to the lake as are not in use for roadways and many of such street ends are now receiving park care.

The smaller parks throughout the city were all kept mowed and made attractive and useful.

PLAT
SHOWING
OLBRICH PURCHASE
SCALE 1" = 200'

NOTE - [Hatched Box] INDICATES PART ALREADY ACQUIRED BY CITY
[Square with diagonal lines] Davis Residence
[Square with horizontal lines] WALTERSHEP Residence



Lake Front Park, in the eastern portion of the city, is increasing in usefulness the most rapidly of any park in the city. The council was asked to include in this year's budget a provision for a comfort station in this park. The finance committee favored it and there was included in the general contingent fund \$2,000 for such a building. Its location has been determined in consultation with Mr. Simonds, landscape designer, and it should be erected this year.

The city council has made the largest advance towards increased park area this last year that has been made in Madison in many years. A portion of the Olbrich offerings adjacent to Lake Front Park and extending for more than 3700 feet along Lake Monona's shore were purchased at a cost to the city of \$40,00.00, interested contributors having assisted to the extent of \$17,350.00 additional. The names of contributors and the amount of their contributions will be included in the published report. The portion of this added park area adjacent to Lake Front Park is being graded, seeded and parked this season. The purchase by the city did not include the entire property recommended by Mr. O. C. Simonds to be included in this park and interested citizens made contributions to the amount of \$7,500.00 to purchase that portion of the larger park scheme designed for a playgrounds and athletic field. This the city accepted. The names of the contributors and the amounts of the contributions will also be published in the printed report.

It is a matter of sincere gratification that this wide sweep of lake frontage has been secured to the public. There is published in our report the Simonds Plan for the completed park. The present needs do not demand the development of that portion of the design lying east of Atwood Avenue but as the population increases about the eastern edge of Lake Monona it is certain that there should be added to the present park area and to the athletic field the entire area recommended in the Simonds Plan. The matter of greatest importance was, of course, to do what has been done, namely to secure title to the lake shore frontage.

In addition to the usual maintenance of the drives that portion of Owen Parkway Drive extending from the end



STEVENS HILL

Madison Park and Pleasure Drive Association 25

of the present macadam to the Mineral Point Road will be permanently surfaced with nine feet of concrete and adequate shoulders of stone on either side. The contract for this permanent improvement was let last year to Mr. John F. Icke and funds were set aside to meet the expense but on account of winter closing in before the work was completed it will have to be finished this spring. It is the purpose of the board of directors to undertake each year some definite stretch of permanent surfacing.

Farwell Drive is in excellent condition and provision will be made to oil it throughout its entire extent this coming season. Owing to developments along the course of Lake Mendota Drive little money was expended on this drive last year. Some re-locations are being considered for portions of the Lake Mendota Drive. An entirely new road from the Sauk Road to the pleasure drive along the westerly boundary of the old Merrill Farm, being the property purchased and in process of development by the Black Hawk Country Club, is being considered as a relocation of the drive for many years used by the public through the Merrill Farm. With the changes in ownership and the developments taking place along Lake Mendota Drive adjustments with the new owners will be made and special contributions will be sought from those benefited in the construction and up-keep of this drive.

Respectfully submitted,

ERNEST N. WARNER,
President.

Appendix

Officers and Members of the Board of Directors of the Madison Park and
Pleasure Drive Association Since its Organization*

<p style="text-align: center;">1894</p> <p>President . . . John M. Olin Vice-Pres. . . . John Hess Secretary . . . Charles N. Brown Treasurer . . . Frank W. Hoyt Directors—C. F. Cooley, Frank G. Brown, Julius Zehnter.</p>	<p>Treasurer . . . Frank W. Hoyt Directors—C. F. Cooley, Frank G. Brown, L. S. Hanks, Frank M. Wootton.</p>
<p style="text-align: center;">1895</p> <p>President John M. Olin Vice-Pres. . . . John Hess Secretary . . . Charles N. Brown Treasurer . . . Frank W. Hoyt Directors—C. F. Cooley, Frank G. Brown, Julius Zehnter.</p>	<p style="text-align: center;">1899</p> <p>President John M. Olin Vice-Pres. . . A. R. Kentzler, Jr. Secretary . . . Charles N. Brown Treasurer . . . Frank W. Hoyt Directors—L. S. Hanks, F. M. Wootton, F. G. Brown, C. F. Cooley, W. F. McConnell.</p>
<p style="text-align: center;">1896</p> <p>President John M. Olin Vice-Pres. . . . Frank S. Warren Secretary . . . Charles N. Brown Treasurer . . . Frank W. Hoyt Directors—C. F. Cooley, Frank G. Brown, L. S. Hanks, Frank M. Wootton.</p>	<p style="text-align: center;">1900</p> <p>President John M. Olin Vice-Pres. . . A. R. Kentzler, Jr. Secretary . . . Charles N. Brown Treasurer . . . Frank W. Hoyt Directors—L. S. Hanks, F. M. Wootton, W. S. Main, Carl J. Hausmann, Daniel K. Tenney.</p>
<p style="text-align: center;">1897</p> <p>President John M. Olin Vice-Pres. . . . Frank S. Warren Secretary . . . Charles N. Brown Treasurer . . . Frank W. Hoyt Directors—C. F. Cooley, Frank G. Brown, L. S. Hanks, Frank M. Wootton.</p>	<p style="text-align: center;">1901</p> <p>President John M. Olin Vice-Pres. . . Andrew S. Brown Secretary . . . Charles N. Brown Treasurer . . . Frank W. Hoyt Directors—L. S. Hanks, F. M. Wootton, W. S. Main, Carl J. Hausmann, Daniel K. Tenney.</p>
<p style="text-align: center;">1898</p> <p>President John M. Olin Vice-Pres. . . . Frank S. Warren Secretary . . . Charles N. Brown</p>	<p style="text-align: center;">1902</p> <p>President John M. Olin Vice-Pres. . . Andrew S. Brown Secretary . . . Charles N. Brown Treasurer . . . Frank W. Hoyt Directors—W. S. Main, D. K. Tenney, C. J. Hausmann, R. C. Vernon, Halle Steensland.</p>

* From January, 1892, until July 10, 1894, a citizen's committee consisting of John M. Olin, Chairman, Prof. C. S. Slichter, Carl Hausmann, John L. Erdahl, L. S. Hanks, C. F. Cooley, M. R. Doyon, J. A. Aylward, M. S. Klauber, H. J. Veerhusen, A. L. Sanborn, secured subscriptions and disbursed moneys for the construction of the Bay Road and the Rustic Bridge, Mr. J. J. Suhr, now deceased, acting as treasurer of the committee.

1903

President . . . John M. Olin
 Vice-Pres. . . Andrew S. Brown
 Secretary . . . Charles N. Brown
 Treasurer . . . Frank W. Hoyt
 Directors—Carl J. Hausmann,
 Wm. R. Bagley, Halle Steensland,
 Magnus Swenson, Arthur O. Fox.

1904

President . . . John M. Olin
 Vice-Pres. . . Andrew S. Brown
 Secretary . . . Charles N. Brown
 Treasurer . . . Frank W. Hoyt
 Directors—Carl J. Hausmann,
 Wm. R. Bagley, Halle Steensland,
 Magnus Swenson, Arthur O. Fox.

1905

President . . . John M. Olin
 Vice-Pres. . . Andrew S. Brown
 Secretary . . . Charles N. Brown
 Treasurer . . . Frank W. Hoyt
 Directors—Carl J. Hausmann,
 Wm. R. Bagley, Halle Steensland,
 Magnus Swenson, Arthur O. Fox.

1906

President . . . John M. Olin
 Vice-Pres. . . Andrew S. Brown
 Secretary . . . Charles N. Brown
 Treasurer . . . Frank W. Hoyt
 Directors—Wm. R. Bagley, C.
 J. Hausmann, J. M. Naughtin,
 Halle Steensland, Magnus Swen-
 son,* W. D. Curtis.†

1907

President . . . John M. Olin
 Vice-Pres. . . Andrew S. Brown
 Secretary . . . Charles N. Brown
 Treasurer . . . Frank W. Hoyt
 Directors—Mayor J. C. Schu-
 bert, and Ald. John C. Prien, ex-
 officio, Wm. R. Bagley, Wm. D.
 Curtis, John M. Naughtin, Fred
 M. Schlimgen, Halle Steensland.

1908

President . . . John M. Olin
 Vice-Pres. . . Andrew S. Brown
 Secretary . . . Charles N. Brown
 Treasurer . . . Frank W. Hoyt
 Directors—Mayor J. C. Schu-
 bert, and Ald. John C. Prien, ex-

officio, Wm. R. Bagley, Wm. D.
 Curtis, John M. Naughtin, Fred
 M. Schlimgen, Halle Steensland.

1909

President . . . John M. Olin
 Vice-Pres. . . Andrew S. Brown
 Secretary . . . Charles N. Brown
 Treasurer . . . Frank W. Hoyt
 Directors—Mayor J. C. Schu-
 bert and Ald. C. W. Constantine,
 ex-officio, Wm. R. Bagley, John
 M. Naughtin, Fred M. Schlimgen,
 Halle Steensland, W. D. Curtis.

1910

President . . . J. C. Schubert
 Vice-Pres. . . Andrew S. Brown
 Secretary . . . Charles N. Brown
 Treasurer . . . Frank W. Hoyt
 Directors—Ald. Geo. Smith, ex-
 officio, W. D. Curtis, Fred M.
 Schlimgen, F. W. Cantwell, F.
 W. Hoyt, G. M. Fisk.

1911

President . . . J. C. Schubert
 Vice-Pres. . . Andrew S. Brown
 Secretary . . . Charles N. Brown
 Treasurer . . . Frank W. Hoyt
 Directors—Ald. Geo. Smith, ex-
 officio, F. W. Cantwell, W. D.
 Curtis, Frank W. Hoyt, Fred M.
 Schlimgen, Ernest N. Warner.

1912

President . . . Ernest N. Warner
 Vice-Pres. . . Charles N. Brown
 Secretary . . . E. J. B. Schubring
 Treasurer . . . Frank W. Hoyt
 Directors—Mayor J. B. Heim,
 and Ald. Milo Kittleson, ex-of-
 ficio, John L. Bourke, Ben F.
 Mautz, Fred M. Schlimgen, F.
 W. Cantwell, Frank W. Hoyt.

1913

President . . . Ernest N. Warner
 Vice-Pres. . . Charles N. Brown
 Secretary . . . Eugene C. Smith
 Treasurer . . . Frank W. Hoyt
 Directors—Mayor J. B. Heim,
 and Ald. Arthur O. Utter, ex-
 officio, John L. Bourke, Ben F.
 Mautz, Fred M. Schlimgen, John
 C. Prien, Frank W. Hoyt.

* Resigned May 19, 1906.

† Succeeded Magnus Swenson.

1914

President . . Ernest N. Warner
 Vice-Pres. . . Charles N. Brown
 Secretary . . Eugene C. Smith
 Treasurer . . Frank W. Hoyt

Directors—Mayor A. H. Kayser
 and Ald. Arthur O. Utter, ex-
 officio, John L. Bourke, Ben F.
 Mautz, Fred M. Schlingen, John
 C. Prien, Frank W. Hoyt.

1915

President . . Ernest N. Warner
 Vice-Pres. . . Charles N. Brown
 Secretary . . Eugene C. Smith
 Treasurer . . Frank W. Hoyt

Directors—Mayor A. H. Kayser
 and Ald. Arthur O. Utter, ex-
 officio, John L. Bourke, Ben F.
 Mautz, Fred M. Schlingen, John
 C. Prien, Frank W. Hoyt.

1916

President . . Ernest N. Warner
 Vice-Pres. . . Charles N. Brown
 Secretary . . John L. Bourke
 Treasurer . . Frank W. Hoyt

Directors—Mayor George C.
 Sayle and Ald. Arthur O. Utter,
 ex-officio, Corydon G. Dwight,
 John C. Prien, Edward J. Reyn-
 olds, Fred M. Schlingen, Frank
 W. Hoyt.

1917

President . . Ernest N. Warner
 Vice-Pres. . . Charles N. Brown
 Secretary . . John L. Bourke
 Treasurer . . Frank W. Hoyt

Directors—Mayor George C.
 Sayle and Ald. Arthur O. Utter,
 ex-officio, Corydon G. Dwight,
 John C. Prien, Edward J. Reyn-
 olds, Fred M. Schlingen, Frank
 W. Hoyt.

1918

President . . Ernest N. Warner
 Vice-Pres. . . Charles N. Brown
 Secretary . . John L. Bourke
 Treasurer . . Frank W. Hoyt

Directors—Mayor George C.

Sayle and Ald. Thomas Quinn,
 ex-officio, Gorydon C. Dwight,
 John C. Prien, Edward J. Reyn-
 olds, Fred M. Schlingen, Frank
 W. Hoyt.

1919

President . . Ernest N. Warner
 Vice-Pres. . . Charles N. Brown
 Secretary . . John L. Bourke
 Treasurer . . Frank W. Hoyt

Directors—Mayor George C.
 Sayle and Ald. Thomas Quinn,
 ex-officio, Gorydon C. Dwight,
 John C. Prien, Edward J. Reyn-
 olds, Fred M. Schlingen, Frank
 W. Hoyt.

1920

President . . Ernest N. Warner
 Vice-Pres. . . Charles N. Brown
 Secretary . . John L. Bourke
 Treasurer . . Frank W. Hoyt

Directors—Mayor I. M. Kittle-
 son and Ald. Thomas W. Quinn,
 ex-officio, Corydon G. Dwight,
 Arthur X. Merz, John C. Prien,
 Fred M. Schlingen, Frank W.
 Hoyt.

1921

President . . Ernest N. Warner
 Vice-Pres. . . Charles N. Brown
 Secretary . . John L. Bourke
 Treasurer . . Frank W. Hoyt

Directors—Mayor I. M. Kittle-
 son and Ald. Thomas W. Quinn,
 ex-officio, Corydon G. Dwight,
 Arthur X. Merz, Fred M. Schlim-
 gen, John Stock, Jr., Frank W.
 Hoyt.

1922

President . . Ernest N. Warner
 Vice-Pres. . . Charles N. Brown
 Secretary . . John L. Bourke
 Treasurer . . Frank W. Hoyt

Directors—Mayor I. M. Kittle-
 son and Ald. Thomas W. Quinn,
 ex-officio, Corydon G. Dwight,
 Herbert C. Schenk, Fred M.
 Schlingen, John Stock, Jr.,
 Frank W. Hoyt.

Private Contributions, Receipts Since Organization

For the years 1892 and 1893 -----		\$6,888 86
Amount contributed by Prof. Owen in 1892, in addition to above -----		3,000 00
For the year 1894 -----		655 00
For the year 1895 -----		995 00
For the year 1896 -----		1,580 00
For the year 1897 -----		10,160 23
For the year 1898 -----		2,171 32
For the year 1899, excluding gifts for Tenney Park -----	\$3,231 50	
Gifts for Tenney Park, exclusive of the \$1,500 appropriated by the city -----	5,778 00	
		<u>\$9,009 50</u>
For the year 1900 -----		5,313 20
For the year 1901 -----		5,286 00
For the year 1902 -----		5,409 00
For the year 1903, for the general work of the association -----	\$5,036 75	
For the year 1903, for the Yahara River improvement -----	20,621 24	
		<u>\$25,657 99</u>
For the year 1904, for the general work of the association -----	\$5,665 50	
For the year 1904, for the Yahara River improvement -----	4,658 50	
		<u>\$10,324 00</u>
For the year 1904, gift of Mr. and Mrs. Wm. F. Vilas for the purchase of Henry Vilas Park -----		18,000 00
For the year 1904, special subscription for improving Henry Vilas Park -----		10,171 00
For the year 1904, special subscription for improving Monona Lake Park -----		1,100 00
Amount contributed by D. K. Tenney for constructing foot bridge in Tenney Park -----		368 00
Amount contributed by Julius Zehnter for same purpose -----		50 00
Amount contributed for all purposes for the year 1905, as follows:		
For general work of the association -----	\$5,663 25	
For the extra work of the association -----	5,338 00	
For securing the addition to Tenney Park -----	5,600 00	
For improving Henry Vilas Park, contributed by Wm. F. Vilas -----	10,000 00	
For improving Brittingham Park, contributed by T. E. Brittingham -----	8,000 00	
		<u>\$34,601 25</u>
Amount contributed for all purposes for the year 1906, as follows:		
For the general work of the association -----	\$7,841 08	
For improving Henry Vilas Park, contributed by William F. Vilas -----	5,000 00	
For improving triangle, contributed by T. E. Brittingham -----	4,000 00	

Legacy of Mary C. Stewart for constructing drinking fountain -----	\$2,000 00	
		\$18,841 08
Amount contributed for all purposes for the year 1907, as follows:		
For the general work of the association..	\$8,741 25	
For improving Henry Vilas Park, contributed by William F. Vilas-----	2,000 00	
For improving Brittingham Park and Parkway to South Madison, contributed by T. E. Brittingham subsequent to annual meeting held April 23, 1907-----	5,000 00	
		\$15,741 25
Amount contributed for all purposes for the year 1908, as follows:		
For the general work of the association..	\$8,066 32	
Amount contributed by D. K. Tenney—five lots which were sold by the association for \$5,000—for improving addition to Tenney Park -----	5,000 00	
Amount contributed by association for improvement of addition to Tenney Park, being the excess realized on sale of fifteen lots over and above the \$5,000 heretofore stated as paid for the land for this addition to the Park -----	9,400 00	
Amount contributed by T. E. Brittingham to erect a public bathhouse in the year 1909 -----	7,500 00	
		\$29,966 32
Amount contributed in 1909 by 827 subscribers for general work -----	\$7,119 00	
Amount contributed by D. K. Tenney for improvement of addition to Tenney Park	2,500 00	
Amount contributed to secure general city plan -----	1,500 00	
Special contributions for the improvement of Tenney Park -----	1,875 00	
Special subscriptions for macadamizing road to Owen Park -----	350 00	
Value of gift of 12 acres of land under will of George B. Burrows-----	15,000 00	
		\$28,394 50
Amount contributed for 1910, as follows:		
Subscriptions -----	\$5,042 50	
Legacy of Sarah J. Riebsam -----	500 00	
Gift of Mrs. Anna M. Vilas -----	25,000 00	
		\$30,542 50
Amount contributed for 1911, as follows:		
Subscriptions -----	\$3,700 00	
Bequest of A. H. Hollister (estimated)--	10,000 00	
		\$13,700 00

Amount contributed for 1912, as follows:		
Subscriptions -----	\$3,355 00	
Gift of Marston Bridge by D. K. Tenney	\$3,321 00	
Subscriptions paving Capital Avenue----	1,146 37	
	<hr/>	\$7,822 37
Amount contributed for 1913, as follows:		
Subscriptions -----	\$4,989 50	
Mrs. A. H. Hollister estate confirming A. H. Hollister bequest, and in excess thereof -----	2,203 09	
	<hr/>	\$7,192 59
Amount contributed for 1914, as follows:		
Subscriptions -----	\$3,925 55	
Dividends and interest -----	233 67	
	<hr/>	\$4,159 22
Amount contributed for 1915, as follows:		
Subscriptions -----	\$2,518 50	
Dividends and interest -----	265 87	
	<hr/>	\$2,784 37
Amount contributed for 1916, as follows:		
Subscriptions -----	\$2,562 00	
Dividends and interest -----	533 95	
Through Madison Zoological and Aquar- ium Society, Mrs. Anna M. Vilas, bird house and aquarium -----	6,900 00	
	<hr/>	\$10,085 95
Amount contributed for 1917, as follows:		
Subscriptions -----	\$2,664 45	
Dividends and interest -----	372 00	
Through Madison Zoological and Aquar- ium Society, Dr. Charles H. Vilas, lion house -----	15,500 00	
	<hr/>	\$18,536 95
Amount contributed for 1918, as follows:		
Subscriptions -----	\$2,274 50	
Dividends and interest -----	384 11	
Daniel Kent Tenney bequest (annually)	500 00	
	<hr/>	\$3,158 61
Amount contributed for 1919, as follows:		
Subscriptions -----	\$2,352 00	
Dividends and interest -----	423 00	
Daniel Kent Tenney bequest -----	500 00	
Contributions for special work in Henry Vilas Park, 1918-1919 -----	10,000 00	
	<hr/>	\$13,275 00
Amount contributed for 1920, as follows:		
Subscriptions -----	\$3,270 00	
Daniel Kent Tenney bequest -----	500 00	
Dividends and interest -----	388 27	
	<hr/>	\$4,158 27

Amount contributed for 1921, as follows:

Subscriptions -----	\$3,163 25	
Daniel Kent Tenney bequest -----	500 00	
Contributions for zoo -----	2,187 48	
Dividends and interest -----	384 99	
Subscriptions for 1920 -----	52 00	
Subscriptions toward purchase of Olbrich holding for park -----	17,350 00	
Subscriptions for purchase of athletic field -----	7,500 00	
		<u>\$31,137 72</u>
Total contributions up to 1922 -----		\$390,237 05
Contributions for 1922:		
Subscriptions for 1922 to date -----	\$3,946 00	
Contributions for zoo -----	1,971 37	
Daniel Kent Tenney bequest -----	500 00	
		<u>\$6,417 37</u>
Total to date for 1922 -----		\$6,417 37
Grand total to date -----		<u>\$396,654 42</u>



TENNEY PARK

Appropriations by the City of Madison

For land for which no bonds were issued -----	\$8,000 00
For improving streets fronting on parks:	
Main Street -----	\$1,875 00
Washington Avenue -----	1,500 00
Drake Street -----	1,935 00
Johnson Street -----	2,500 00
Brittingham Park -----	2,326 00
Brittingham Place -----	1,675 00
Marston Avenue -----	2,965 00
Sherman Avenue -----	2,517 00
	\$17,293 00
For streets within parks:	
Burr Oak Drive, Henry Vilas Park -----	\$2,900 00
Bay View Drive, Brittingham Park -----	7,153 00
Bay View Drive, Brittingham Park -----	4,900 00
	\$14,593 00
For storm sewer extending through parks -----	3,266 00
For boathouse, Brittingham Park -----	5,000 00
	\$48,512 00
In addition to this the city has paid out since 1902 for park maintenance including principal and interest on bonds issued -----	\$112,808 00
General maintenance, 1912 -----	16,000 00
Filling at Brittingham Park -----	214 50
Taxes on streets abutting park property -----	4,269 75
Improving Henry Vilas Park Addition -----	5,000 00
Tenney Park Bathhouse -----	5,400 00
Filling Burrows Park -----	1,800 00
Reported by city auditor for park purposes for the year 1913 -----	32,086 85
Reported by city auditor for park purposes for the year 1914 -----	45,512 14
Reported by city auditor for park purposes for the year 1915 -----	54,756 30
Reported by city auditor for park purposes for the year 1916 -----	51,608 27
Reported by city auditor for park purposes for the year 1917 -----	48,276 74
Reported by city auditor for park purposes for the year 1918 -----	55,331 13
Reported by city auditor for park purposes for the year 1919 -----	49,019 19
Reported by city auditor for park purposes for the year 1920 -----	63,265 23
Reported by city auditor for park purposes for the year 1921 -----	56,709 29
Bond issue by city for Olbrich purchase -----	40,000 00
	\$690,569 39
Making a total of -----	

Treasurer's Report

To the Members of the Madison Park and Pleasure Drive Association:

GENTLEMEN: The following is a condensed statement of the financial transactions for the year ending December 31, 1920.

1920

Receipts

Balance in bank Jan. 1, 1920	\$117 73
Reports sold	8 00
1920 subscriptions	3,270 00
Interest	388 27
University of Wisconsin	976 00
Lantern slides	5 00
Town of Madison	500 00
Skating rink	110 00
City of Madison	3,150 00
Asphalt sold	10 50
	<hr/>
	\$8,535 50

Disbursements

Lake Mendota Drive	\$3,058 60
Farwell Drive	2,787 73
Miscellaneous	905 52
Automobile	384 73
Owen Parkway	39 43
Lake Monona Skating Rink	110 00
University Drive	976 19
Work done by park men	80 05
Monona Drive	6 66
Balance on hand Dec. 31, 1920	186 59
	<hr/>
	\$8,535 50
	<hr/>
By balance Jan. 1, 1921	\$186 59

Mr. and Mrs. A. H. Hollister Park Fund

Statement from January 1, 1920, to January 1, 1921

1920			
Jan.	1	By balance from annual report-----	\$14,705 61
Feb.	20	By Arthur Heilman, interest to Feb. 17, 1920 -----	\$55 00
Mar.	13	By John O'Connell, interest to Mar. 12, 1920 -----	11 12
Mar.	22	By Joseph Hornung, interest to Mar. 22, 1920 -----	137 50
April	19	By A. F. Menges, interest to Apr. 18, 1920 -----	27 50
May	1	By Aug. Halberslaben, interest to April 30, 1920 -----	46 45
May	4	By Robt. O'Malley, interest to May 3, 1920 -----	94 73
Aug.	18	By Arthur Heilman, interest to August 17, 1920 -----	55 00
Sept.	14	By John O'Connell, interest to Sept. 12, 1920 -----	19 25
Sept.	23	By Joseph Hornung, interest to Sept. 22, 1920 -----	137 50
Oct.	19	By A. F. Menges, interest to Oct. 18, 1920 -----	27 50
Nov.	1	By Aug. Halberslaben, interest to Oct. 30, 1920 -----	55 00
Nov.	4	By Robert O'Malley, interest to Nov. 3, 1920 -----	110 00
			776 55
To Paid Madison Park and Pleasure Drive Association one-half of income, \$766.55 used on drives outside of the city-----		\$388 27	
To Balance -----		15,093 89	
			<u>\$15,482 16</u>
			<u>\$15,482 16</u>

1921			
Jan.	1	By Balance -----	\$15,093 89

The above balance is invested in the name of the Madison Park and Pleasure Drive Association as Trustee of Mr. and Mrs. A. H. Hollister Park Fund as follows:

Joseph Hornung, mortgage, 5½%	\$5,000 00
A. F. Menges, mortgage, 5½%---	1,000 00
A. & R. Heilman, mortgage, 5½%--	2,000 00
Aug. Halberslaben, mortgage, 5½%	2,000 00
Robt. O'Malley, mortgage, 5½%--	4,000 00
John O'Connell, mortgage, 5½%--	700 00
First National Bank Certificates, 2½, 3, 4% -----	393 89
	<u>\$15,093 89</u>

Original Capital		
Principal Sept. 17, 1913 -----	\$12,279 61	
Principal Sept. 20, 1917 -----	212 75	
	<u>\$12,492 36</u>	
One-half income to Jan. 1, 1921---	2,601 53	
	<u>\$15,093 89</u>	

The Mary C. Stewart Memorial Fountain Fund

Statement from January 1, 1920, to January 1, 1921

1920		
Jan. 1	By Balance -----	\$2,958 15
Dec. 31	By interest to date -----	118 33
	To balance -----	\$3,076 48
		<u>\$3,076 48</u>
		<u>\$3,076 48</u>

1921		
Jan. 1	By balance -----	\$3,076 48

The above balance is invested in the name of the Madison Park and Pleasure Drive Association as Trustee of the Mrs. Stewart bequest as follows:

First National Bank certificates, 2½, 3, 4%-----	\$3,076 48
--	------------

D. K. Tenney Park Fund

1920		
May 26	By City of Madison -----	\$500 00
Aug. 4	By Golden Rule Association -----	500 00
Nov. 11	By interest on U. S. of America certificates of indebtedness to date -----	20 72
	To balance -----	\$1,020 72
		<u>\$1,020 72</u>
		<u>\$1,020 72</u>

1921		
Jan. 1	By balance -----	\$1,020 72

The above balance is invested in the name of the Madison Park and Pleasure Drive Association, D. K. Tenney Park Fund, as follows:

U. S. of America certificates of indebtedness, 5¾%---	\$1,000 00
First National Bank certificate -----	20 72
	<u>\$1,020 72</u>

Respectfully submitted,

FRANK W. HOYT, *Treasurer.*

I hereby certify that I have examined the accounts of Frank W. Hoyt, treasurer, for the year 1920 and find them correct in all particulars.

Dated April 30, 1921.

ROBERT C. O'MALLEY.



WHITE HANDED GIBBON—(*Hylobates lar*)

SUBSCRIPTIONS FOR 1920

Advance Rumely Thresher Co. -----	\$10 00	Collyer, B. B. -----	\$5 00
Alford, Frank -----	5 00	Commons, J. R. -----	10 00
Allen, Miss Katherine -----	15 00	Comstock, George C. -----	10 00
Allison, M. B. -----	5 00	Coppernoll, Jan es S. -----	10 00
Allison, M. G. -----	2 00	Corscot, John -----	5 00
Andelson, Abe -----	10 00	Crescent Clothing Co. -----	15 00
Andelson, Louis -----	10 00	Critton, J. M. -----	5 00
Atwood, M. H. -----	5 00	Crowe, Miss B. C. -----	5 00
		Crowley, F. M. -----	25 00
		Cudahy Cash Market -----	10 00
Babcock, S. M. -----	10 00		
Badger Pharmacy -----	10 00	Dean, Joseph -----	10 00
Bagley, Wm. R. -----	25 00	Dithmar, J. T. -----	5 00
Baker, N. D. -----	5 00	Dudgeon, R. B. -----	5 00
Bauchop, F. E. -----	5 00	Dueppen, Jake -----	7 50
Bean, E. F. -----	5 00	Dye, A. A. -----	25 00
Bergh, M. C. -----	10 00		
Bitterman, J. C. -----	10 00	Edwards, E. N. -----	5 00
Blackburn, A. C. -----	10 00	Ekern, Herman L. -----	10 00
Blake, Chauncey E. -----	15 00	Ela, Emerson -----	15 00
Blied, F. C., Printing Co. -----	10 00	Electrical Supply Co. -----	10 00
Blied, John J., & Sons -----	5 00	Ellman, George -----	2 00
Boyce, S. R. -----	10 00	Elsom, J. C. -----	3 00
Boyd, John L. -----	15 00	Elver, Elmore T. -----	10 00
Boyd, Joseph M. -----	5 00		
Boyd, Joseph M., Co. -----	15 00	Fairchild, Mrs. F. B. -----	25 00
Bradley, Mrs. H. C. -----	25 00	Fauerbach Brewing Co. -----	10 00
Brandenburg, O. D. -----	10 00	Feldman, Jacob -----	5 00
Brittingham, T. E. -----	50 00	Ferguson, F. W. -----	10 00
Brossard, Eugene E. -----	10 00	Findorf, J. H. -----	15 00
Brown, Charles N. -----	10 00	Fischer, Richard -----	10 00
Brown, Fred M. -----	25 00	Fjelstad, G. J. -----	5 00
Buell, C. E. -----	10 00	Forward Oil Co. -----	10 00
Burdick & Murray Co. -----	10 00	Fox, A. O. -----	10 00
Burger, Peter L. -----	15 00	Fox, J. H. -----	5 00
Butler, H. L. -----	25 00	Fox, Philip R. -----	15 00
		Frautschi, C., & Sons -----	10 00
		Frautschi, E. J. -----	10 00
		Frish, A. M. -----	10 00
Cadby, J. N. -----	10 00		
Cady, Emil C. -----	4 00	Gallagher, Arthur J. -----	5 00
Cantwell Printing Co. -----	25 00	Gallagher, John -----	5 00
Carr, Peter P. -----	5 00	Garver, James R. -----	10 00
Castle & Doyle -----	10 00	Gary, George E. -----	10 00
Chapman, C. B. -----	25 00	Geffert, Louis A. -----	3 00
City Meat Market No. 3 -----	10 00	General Paper & Supply Co. -----	25 00
Clarke Publishing Co. -----	25 00	Gernon, G. E. -----	25 00
Cochran, J. W. -----	5 00	Giddings, W. E. -----	20 00
Coe, J. H. -----	10 00	Gilbert, E. M. -----	5 00
Cole, Leon J. -----	3 00	Gill, G. E. & A. J. -----	10 00
Coleman, Thomas W. -----	25 00		
Collins, W. H. -----	15 00		

Gilman, Stephen W. -----	\$5 00	Karstens, F. W. -----	\$10 00
Glenz, A. H. -----	5 00	Kayser, A. H. -----	10 00
Grady, E. J. -----	5 00	Kenney, A. P. -----	5 00
Grimm, John W. -----	5 00	Kennedy Dairy Co. -----	25 00
Grinde, John -----	10 00	Kindschi, George W. ----	5 00
Groves, John -----	5 00	Kindschi, M. R. -----	5 00
		Kirchoffer, W. G. -----	10 00
Haley, John C., & Sons ----	5 00	Kittleson, I. M. -----	5 00
Hall, F. W. -----	5 00	Kleiner, J. E. -----	5 00
Halligan, B. J. -----	10 00	Kney, E. O. -----	5 00
Hanks, L. M. -----	25 00	Kney, Paul -----	10 00
Hanks, L. S. -----	15 00	Knox, P. B. -----	10 00
Harloff-Loprich Co. -----	10 00	Kornhauser, Alexander --	10 00
Hart, Walter W. -----	5 00	Krauskopf, F. C. -----	2 00
Hastings, E. G. -----	5 00	Kroncke, George -----	10 00
Hatch, K. L. -----	5 00	Krueger & Tandvig -----	10 00
Haugen, Nils P. -----	10 00		
Hazelwood, John A. -----	5 00	Laird, A. G. -----	5 00
Heddles, W. S. -----	15 00	Larson, A. C. -----	10 00
Hedquist, O. O. -----	5 00	Law, James E. and Ed-	
Hefty, T. R. -----	5 00	ward J. -----	5 00
Heggen, A. S. -----	5 00	Lindsay, W. T. -----	15 00
Heilprin, J., & Co. -----	5 00	Loftsgordon, H. J. -----	10 00
Herfurth, Theodore -----	10 00	Loomis, Mrs. Frances S. --	5 00
Hill, Carl N. -----	10 00	Luetscher, J. J. -----	5 00
Hinkson, Park E. -----	10 00	Lunstrum, Lewis -----	5 00
Hobbins, J. N. -----	10 00	Lyons, Thomas E. -----	10 00
Hobbins, J. W. -----	10 00		
Hoffman Feed Co. -----	10 00	McCarthy, T. C. -----	25 00
Hohlfeld, A. R. -----	5 00	McKay, W. J. -----	3 00
Holmes, George C. -----	5 00	McMullen, C. L. -----	10 00
Holt, J. C. -----	2 50	Mack, John G. D. -----	5 00
Hopkins, A. W. -----	5 00	Madison Gas & Electric	
Hoppman, A. C. -----	5 00	Co. -----	25 00
Hotchkiss, W. O. -----	10 00	Madison Realty Co. -----	50 00
Hovey, M. H. -----	10 00	Main, John S. -----	5 00
Hoyt, Frank W. -----	25 00	Main, W. E. -----	5 00
Hudson, Charles H. -----	10 00	Mansfield-Caughey Co. ---	5 00
Humphrey, George C. -----	7 50	Marlatt, Miss A. L. -----	5 00
Hurd, R. W. -----	5 00	Marschall, A. J. -----	25 00
Huseby, George C. -----	5 00	Marshall, Wm. S. -----	20 00
Hutchcroft, L. W. -----	5 00	Martens, Conrad F. -----	5 00
Hyland, W. J. -----	5 00	Mason, E. C. -----	7 50
		Mason, Vroman -----	5 00
Icke, John F. -----	10 00	Mautz Bros. -----	15 00
Ingersoll, L. R. -----	3 00	Mayers, Andrew A. -----	10 00
		Mead, Daniel W. -----	25 00
Jacobs, F. W. -----	10 00	Menges, A. F. -----	25 00
Jarvis, C. W. -----	3 00	Merz, A. X. -----	20 00
Jefferson Transfer Co. ----	10 00	Montgomery, F. W. -----	25 00
Jenkins, B. M. -----	10 00	Moore, R. A. -----	5 00
Johnson, C. A. -----	50 00	Moran, John -----	10 00
Johnson, Hobart S. -----	25 00	Morris, W. A. P. -----	10 00
Johnson, M. I. -----	25 00	Moseley Book Co. -----	20 00
Jonas, A. F. -----	50 00	Mowry, Don E. -----	5 00
Jones, Burr W. -----	25 00	Mueller, W. H. -----	5 00
Jones, L. R. -----	5 00	Murphy, Tim -----	5 00

Myrland, A. J. -----	\$5 00	Sanborn, John B. -----	\$10 00
Neckerman, George M. --	5 00	Sanderson, C. H., & Co. --	10 00
Nelson, George -----	10 00	Sater, M. H. -----	5 00
Nelson, M. L. -----	5 00	Sayle, George C. -----	10 00
Nelson, O. M. & Son -----	5 00	Scanlan-Morris Co. -----	10 00
Nelson, Robert N. -----	5 00	Schenk, H. C. -----	10 00
Netherwood, H. C. -----	5 00	Schlimgen, Fred M. -----	15 00
New York Store -----	10 00	Schmitz, August J. -----	5 00
Nichols, H. E. -----	5 00	Schoelkopf, L. F. -----	25 00
Noe, Mrs. Jessie -----	15 00	Schoen, Frank -----	5 00
Norgord, C. P. -----	5 00	Schulz, Herman -----	5 00
Norsman, O. S. -----	5 00	Schumacher, W. G. -----	5 00
		Schwogler, William -----	5 00
Oakley, F. W. -----	15 00	Seastone, C. V. -----	10 00
Occident Baking Co. -----	15 00	Sheldon, Charles S. -----	5 00
Olbrick, M. B. -----	10 00	Simon, Fred N. -----	10 00
Olin, John M. -----	25 00	Slichter, C. S. -----	10 00
Olwell Bros. -----	5 00	Smiley, Daniel -----	5 00
Olson, O. C. -----	5 00	Smith, Charles Forster -----	5 00
Olson & Veerhusen Co. -----	25 00	Smith, Howard L. -----	5 00
O'Malley, Robert C. -----	10 00	Smith, Karl W. -----	10 00
O'Shea, M. V. -----	5 00	Smith, Lathrop E. -----	5 00
Ott, Harlow S. -----	5 00	Smith, L. S. -----	5 00
Overton, J. B. -----	10 00	Smith, Walter M. -----	5 00
		Smith & Wilhelm -----	5 00
Palmer, J. H. -----	10 00	Smythe, H. A. -----	5 00
Park Hotel Co. -----	25 00	Snow, Benjamin W. -----	5 00
Parke, H. J. -----	10 00	Stark Land Co. -----	10 00
Parker, W. N. -----	5 00	Stebbins, Byron H. -----	10 00
Parkinson, E. E. -----	5 00	Steensland Land Co. -----	30 00
Parkinson, J. B. -----	5 00	Stehr, Wm. -----	5 00
Peabody, Arthur -----	5 00	Steve, W. F. -----	5 00
Pepper, John W. -----	5 00	Stevens, E. Ray -----	10 00
Phi Gamma Delta Frater-		Stevens, Mrs. M. Elizabeth	25 00
nity -----	25 00	Stewart, C. B. -----	5 00
Photoart House -----	10 00	Stitgen, Ben -----	5 00
Pickford, H. W. -----	5 00	Struck & Irwin Fuel Co. --	10 00
Prien, J. C. -----	5 00		
		Taylor, Richard F. -----	5 00
Qualey, R. N. -----	2 00	Teckemeyer, W. J. -----	15 00
Quann, Mike -----	5 00	Tenney, Charles H. -----	10 00
		Thompson, H. L. -----	5 00
Ramsay, J. B. -----	15 00	Thorkelson, H. J. -----	15 00
Rayne, George T. -----	15 00	Thwaites, F. T. -----	5 00
Reed, Frank D. -----	10 00	Thwaites, Mrs. Jessie T. --	5 00
Reindahl, A. K. -----	5 00	Toepfer, Otto F. -----	15 00
Rennebohm, Fred O. -----	5 00	Tormey, Thomas W. -----	10 00
Reynolds, Edward J. -----	10 00	Trachte Bros. Co. -----	10 00
Riley, Charles G. -----	5 00	Tressler, A. W. -----	10 00
Rogers, Alfred -----	10 00	Trumbower, Henry R. -----	10 00
Roys, W. B. -----	10 00	Turneure, F. E. -----	10 00
Royston, R. T. -----	10 00		
Rundell, Sidney P. -----	10 00	University Co-Operative	
Runge, A. E. -----	5 00	Co. -----	15 00
Sammis, J. L. -----	2 00	Van Vleck, E. B. -----	10 00
Sanborn, A. L. -----	25 00	Vilas, Mrs. Anna M. -----	25 00

Vinje, A. J. -----	\$10 00	Wolff, Kubly & Hirsig----	\$15 00
Wagner, George -----	10 00	Wood, Kent T. -----	5 00
Warner, Ernest N. -----	25 00	Worcester, E. S. -----	5 00
Waterman, H. G. -----	5 00	Young, E. J. -----	10 00
Wiedenbeck Dobelin Co.---	25 00	Zimmerman, A. G. -----	5 00
Williams, Norton -----	5 00	Zoelle, F. J. -----	5 00
Withey, M. O. -----	10 00		
Wolcott, W. A. -----	5 00		
Wolf, H. C. -----	5 00	Total-----	\$3,327 00



ELDERS

Balance Sheet

By City Auditor

STATEMENT OF DETAIL OPERATION, MAINTENANCE, AND OUTLAY EXPENDITURES OF PUBLIC
PARKS AND PLAYGROUNDS FOR PERIOD JANUARY 1, 1920, TO DECEMBER 31, 1920

Account	Expenditure	Budget Appropriation	Unexpended Balance	Overdraft
ADMINISTRATION				
Salaries and Wages -----	\$2,669 92	\$2,780 00	\$110 08	
Printing, Stationery and Office Expense-----	619 09	650 00	30 91	
	\$3,289 01	\$3,430 00	\$140 99	
TENNEY PARK				
Salaries and Wages -----	\$3,455 37	\$3,395 00		\$60 37
General Supplies -----	57 58	43 25		14 33
Heat, Light, Power and Water-----	32 01	10 00		22 01
Advertising and Publication -----	3 15			3 15
Repairs and Replacements -----	8 55	150 00	\$141 45	
Real Estate and Structures -----	1,128 09	1,228 09	100 00	
	\$4,684 75	\$4,826 34	\$241 45	\$99 86

STATEMENT OF DETAIL OPERATION, MAINTENANCE, AND OUTLAY EXPENDITURES OF PUBLIC
PARKS AND PLAYGROUNDS FOR PERIOD JANUARY 1, 1920, TO DECEMBER 31, 1920, CONTINUED

Account	Expenditure	Budget Appropriation	Unexpended Balance	Overdraft
TENNEY PARK BATHHOUSE				
Salaries and Wages -----	\$891 34	\$1,060 00	\$168 66	-----
Printing, Stationery and Office Expense -----	9 31	18 00	8 69	-----
Rent and Insurance -----	22 40	22 40	-----	-----
General Supplies and Expense -----	104 91	8 40	-----	\$96 51
Heat, Light, Power and Water -----	48 42	90 00	41 58	-----
Laundry and Janitor Supplies -----	113 44	171 10	57 64	-----
Dry Goods, Bedding and Clothing -----	81 45	96 30	14 85	-----
Medical Supplies -----	2 75	-----	-----	2 75
Repairs and Replacements -----	129 90	215 00	85 10	-----
	\$1,403 92	\$1,681 20	\$376 52	\$99 26
TENNEY PARK LAVATORY				
Salaries and Wages -----	\$19 13	-----	-----	\$19 13
Laundry and Janitor Supplies -----	-----	\$15 05	\$15 05	-----
Medical Supplies -----	1 10	2 00	90	-----
Heat, Light, Power and Water -----	-----	20 00	20 00	-----
Repairs and Replacements -----	30 00	23 00	-----	7 00
	\$50 23	\$60 05	\$35 95	\$26 13

STATEMENT OF DETAIL OPERATION, MAINTENANCE, AND OUTLAY EXPENDITURES OF PUBLIC
PARKS AND PLAYGROUNDS FOR PERIOD JANUARY 1, 1920, TO DECEMBER 31, 1920, CONTINUED

Account	Expenditure	Budget Appropriation	Unexpended Balance	Overdraft
GENERAL PARK EQUIPMENT				
Salaries and Wages -----	\$347 12	\$150 00		\$197 12
Printing, Stationery and Office Expense -----	26 00			26 00
General Supplies and Expense -----	199 90	177 70		22 20
Laundry and Janitor Supplies -----	17 31			17 31
Heat, Light, Power and Water -----	24 44	110 00	\$85 56	
Stable and Garage Expense -----	1,721 78	1,716 95		4 83
Repairs and Replacements -----	120 08			120 08
Apparatus and Equipment -----	681 20	1,000 00	318 80	
Real Estate and Structures -----	309 00			309 00
	\$3,446 83	\$3,154 65	\$404 36	\$696 54
BRITTINGHAM PARK				
Salaries and Wages -----	\$3,039 88	\$2,595 00		\$448 88
General Supplies -----	2 65	308 25	\$305 60	
Heat, Light, Power and Water -----		10 00	10 00	
Repairs and Replacements -----	12 75	175 00	162 25	
	\$3,055 28	\$3,088 25	\$477 85	\$448 88

STATEMENT OF DETAIL OPERATION, MAINTENANCE, AND OUTLAY EXPENDITURES OF PUBLIC
PARKS AND PLAYGROUNDS FOR PERIOD JANUARY 1, 1920, TO DECEMBER 31, 1920, CONTINUED

Account	Expenditure	Budget Appropriation	Unexpended Balance	Overdraft
BRITTINGHAM PARK BOATHOUSE				
Salaries and Wages -----	\$802 50	\$760 00	-----	\$42 50
Printing, Stationery and Office Expense -----	34 77	30 00	-----	4 77
General Supplies -----	1 30	104 20	\$102 90	-----
Heat, Light, Power and Water -----	52 46	74 00	21 54	-----
Dry Goods, Bedding and Clothing -----	8 00	16 00	8 00	-----
Repairs and Replacements -----	-----	35 00	35 00	-----
Laundry and Janitor Supplies -----	2 90	5 10	2 20	-----
Medical Supplies -----	-----	2 00	2 00	-----
	\$901 93	\$1,026 30	\$171 64	\$47 27
BRITTINGHAM PARK BATHHOUSE				
Salaries and Wages -----	\$709 34	\$890 00	\$180 66	-----
Printing, Stationery and Office Expense -----	14 82	18 00	3 18	-----
General Supplies -----	1 25	42 40	41 15	-----
Laundry and Janitor Supplies -----	42 28	62 90	20 62	-----
Medical Supplies -----	2 75	2 00	-----	\$ 75
Heat, Light, Power and Water -----	112 24	45 00	-----	67 24
Dry Goods, Bedding and Clothing -----	77 44	97 30	19 86	-----
Repairs and Replacements -----	-----	80 00	80 00	-----
	\$960 12	\$1,237 60	\$345 47	\$67 99

STATEMENT OF DETAIL OPERATION, MAINTENANCE, AND OUTLAY EXPENDITURES OF PUBLIC
PARKS AND PLAYGROUNDS FOR PERIOD JANUARY 1, 1920, TO DECEMBER 31, 1920, CONTINUED

Account	Expenditure	Budget Appropriation	Unexpended Balance	Overdraft
HENRY VILAS PARK				
Salaries and Wages -----	\$4,363 07	\$3 990 00		\$373 07
General Supplies and Expense -----	121 24	369 75	\$248 51	
Heat, Light, Power and Water -----	277 02	200 00		77 02
Dry Goods, Bedding and Clothing -----		4 00	4 00	
Repairs and Replacements -----		275 00	275 00	
Real Estate and Structures -----	5,899 74	5,905 35	5 61	
	\$10,661 07	\$10,744 10	\$533 12	\$450 09
HENRY VILAS PARK LAVATORY				
General Supplies and Expense -----	\$9 20	\$138 25	\$129 05	
Laundry and Janitor Supplies -----	6 37	42 50	36 13	
Medical Supplies -----		2 00	2 00	
Heat, Light, Power and Water -----	84 73	85 00	27	
Furniture and Fixtures -----		54 00	54 00	
	\$100 30	\$321 75	\$221 45	

STATEMENT OF DETAIL OPERATION, MAINTENANCE, AND OUTLAY EXPENDITURES OF PUBLIC
PARKS AND PLAYGROUNDS FOR PERIOD JANUARY 1, 1920, TO DECEMBER 31, 1920, CONTINUED

Account	Expenditure	Budget Appropriation	Unexpended Balance	Overdraft
HENRY VILAS PARK ZOO				
Salaries and Wages -----	\$12,093 84	\$10,440 00		\$1,128 84
Printing, Stationery and Office Expense -----	44 43	92 00	\$47 57	
Freight and Express -----	135 94	100 00		35 94
Rent and Insurance -----	215 20	196 40		18 80
General Supplies -----	499 91	866 90	366 99	
Laundry and Janitor Supplies -----	48 40	185 80	137 40	
Medical Supplies -----	54 90	50 00		4 90
Heat, Light, Power and Water -----	4,071 53	3,350 00		721 53
Dry Goods, Bedding and Clothing -----	40 10	55 00	14 90	
Stable and Garage Expense -----	10,624 15	9,462 50		1,161 65
Repairs and Replacements -----	442 42	1,360 00	917 58	
Real Estate and Structures -----	183 66	925 50	741 84	
Apparatus and Equipment -----	20 00			20 00
Journal Transfers -----	101 75			
	\$28,576 23	\$27,084 10	\$2,226 28	\$3,091 66
ORTON PARK				
Salaries and Wages -----	\$345 07	\$200 00		\$145 07

STATEMENT OF DETAIL OPERATION, MAINTENANCE, AND OUTLAY EXPENDITURES OF PUBLIC
PARKS AND PLAYGROUNDS FOR PERIOD JANUARY 1, 1920, TO DECEMBER 31, 1920, CONTINUED

Account	Expenditure	Budget Appropriation	Unexpended Budget	Overdraft
SPAIGHT STREET PARK				
Salaries and Wages -----	\$133 17	\$75 00	-----	\$58 17
BURROWS PARK				
Salaries and Wages -----	\$131 07	\$200 00	\$69 93	-----
LAKE FRONT PARK				
Salaries and Wages -----	\$429 02	\$470 00	\$40 98	-----
Real Estate and Structures -----	-----	25 00	25 00	-----
	\$429 02	\$495 00	\$65 98	-----
WASHINGTON BOULEVARD				
Salaries and Wages -----	\$142 83	-----	\$125 00	\$17 83

STATEMENT OF DETAIL OPERATION, MAINTENANCE, AND OUTLAY EXPENDITURES OF PUBLIC
PARKS AND PLAYGROUNDS FOR PERIOD JANUARY 1, 1920, TO DECEMBER 31, 1920, CONTINUED

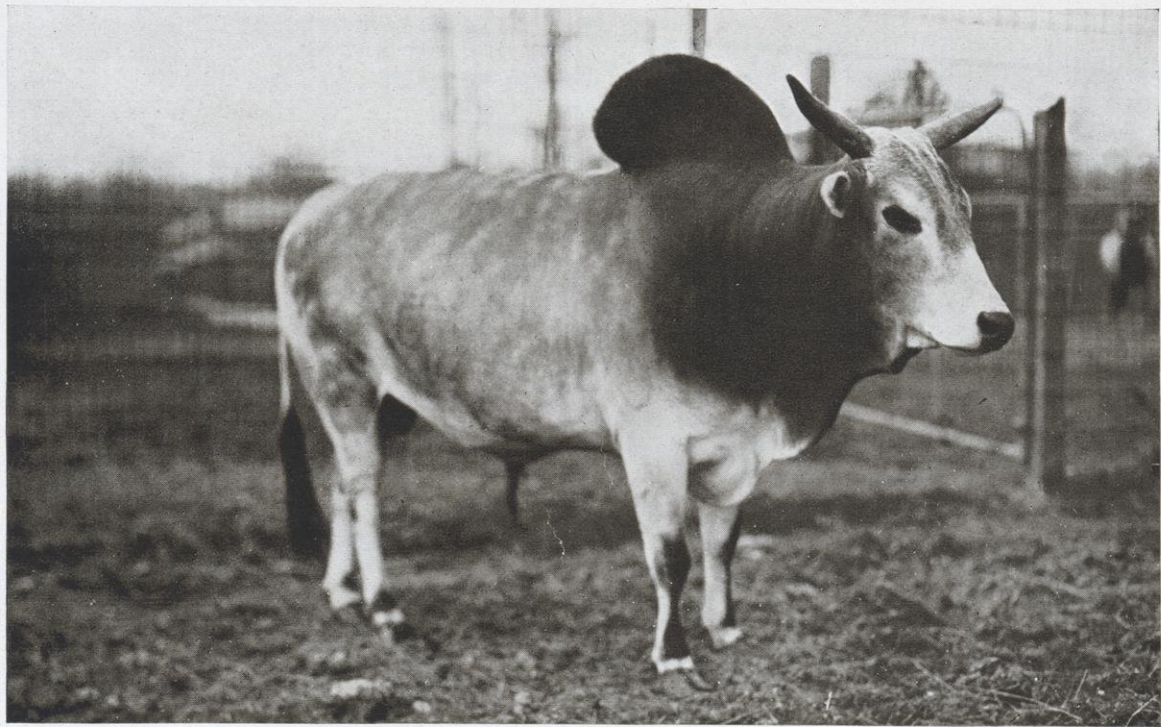
Account	Expenditure	Budget Appropriation	Unexpended Budget	Overdraft
MAPLE PARK Salaries and Wages -----	\$110 29	\$75 00	-----	\$35 29
SPOONER STREET VIADUCT Salaries and Wages -----	\$6 08	\$15 00	\$8 92	-----
KENDALL PARK Salaries and Wages -----	\$43 41	\$25 00	-----	\$18 41
Real Estate and Structures -----	409 44	434 44	\$25 00	-----
	\$452 85	\$459 44	\$25 00	\$18 41
WASHINGTON OVAL Salaries and Wages -----	\$180 49	\$125 00	-----	\$55 49
OWEN PARKWAY Salaries and Wages -----	\$153 00	\$150 00	-----	\$3 00

STATEMENT OF DETAIL OPERATION, MAINTENANCE, AND OUTLAY EXPENDITURES OF PUBLIC
PARKS AND PLAYGROUNDS FOR PERIOD JANUARY 1, 1920, TO DECEMBER 31, 1920, CONTINUED

Account	Expenditure	Budget Appropriation	Unexpended Budget	Overdraft
MADISON GENERAL HOSPITAL				
Salaries and Wages -----	\$69 70	\$75 00	\$5 30	-----
EVERGREEN PARK				
Salaries and Wages -----	\$35 12	\$75 00	\$39 88	-----
OLIVE JONES FIELD				
Salaries and Wages -----	\$40 80	\$50 00	\$9 20	-----
Real Estate and Structures -----	154 11	154 11	-----	-----
	\$194 91	\$204 11	\$9 20	-----
BURR JONES FIELD				
Salaries and Wages -----		\$75 00	\$75 00	-----
Real Estate and Structures -----	\$141 60	141 60	-----	-----
	\$141 60	\$216 60	\$75 00	-----

STATEMENT OF DETAIL OPERATION, MAINTENANCE, AND OUTLAY EXPENDITURES OF PUBLIC
PARKS AND PLAYGROUNDS FOR PERIOD JANUARY 1, 1920, TO DECEMBER 31, 1920, CONTINUED

Account	Expenditure	Budget Appropriation	Unexpended Balance	Overdraft
STREET ENDS				
Salaries and Wages -----	\$138 71	\$200 00	\$61 29	-----
QUARANTINE HOSPITAL				
Salaries and Wages -----	\$24 50	\$30 00	\$5 50	-----
OUTSIDE DRIVES				
Appropriation -----	\$3,000 00	\$3,000 00	-----	-----
MORRISON STREET PARK				
Salaries and Wages -----	\$54 20	\$50 00	-----	\$4 20
Real Estate and Structures -----	55 38	55 38	-----	-----
	\$109 58	\$105 38	-----	\$4 20



SACRED BULL—ZEBU—(*Bos indicus*)

STATEMENT OF DETAIL OPERATION, MAINTENANCE, AND OUTLAY EXPENDITURES OF PUBLIC
PARKS AND PLAYGROUNDS FOR PERIOD JANUARY 1, 1920, TO DECEMBER 31, 1920, CONTINUED

Account	Expenditure	Budget Appropriation	Unexpended Balance	Overdraft
MONONA SKATING RINK Maintenance of Rink -----	\$102 98	\$150 00	\$47 02	-----
JOURNAL TRANSFER CHARGES -----	\$234 59	-----	-----	-----
TOTAL BUDGET APPROPRIATION, PARKS -----			\$35,545 75	-----
TOTAL EXPENDITURES AND JOURNAL TRANSFERS, PARKS -----				\$34,689 00
UNEXPENDED BALANCE, PARKS -----				856 75
			<u>\$35,545 75</u>	<u>\$35,545 75</u>
TOTAL BUDGET APPROPRIATION, HENRY VILAS PARK ZOO -----			\$27,084 10	-----
TOTAL EXPENDITURES AND JOURNAL TRANSFERS, HENRY VILAS PARK ZOO -----				\$28,576 23
OVERDRAFT, HENRY VILAS PARK ZOO -----			1,492 13	
			<u>\$28,576 23</u>	<u>\$28,576 23</u>

Madison Park and Pleasure Drive Association

Treasurer's Report

To the Members of the Madison Park and Pleasure Drive Association:

The following is a condensed statement of the receipts and disbursements of the association for the year ending Dec. 31, 1921:

1921

Receipts

Bank Balance Jan. 1, 1921-----	\$186 59
1920 subscriptions -----	52 00
1921 subscriptions -----	3,163 25
Nolen reports -----	6 50
Interest -----	384 99
Appropriation by city -----	3,150 00
Work by park men -----	56 82
Zoo account -----	1,551 25
Trees sold -----	16 50
Miscellaneous -----	31 00

Disbursements

Miscellaneous -----	\$988 20
Automobile -----	338 84
Lake Mendota Drive -----	1,391 06
Farwell Drive -----	989 27
Zoo account -----	1,551 25
Owen Parkway -----	284 64
Work by park men -----	21 82
Balance in bank Dec. 31, 1921 -----	3,033 82
	<hr/>
	\$8,598 90
	<hr/>
	\$8,598 90
	<hr/>
Jan. 1, 1922, by Balance -----	\$3,033 82

Mr. and Mrs. A. H. Hollister Park Fund

Statement from January 1, 1921, to January 1, 1922

1921			
Jan. 1	By balance from annual report -----		\$15,093 89
Feb. 23	By Arthur Heilman, interest to Feb. 17, 1921 -----	\$55 00	
Mar. 14	By John O'Connell, interest to March 12, 1921 -----	19 25	
Mar. 22	By Joseph Hornung, interest to March 22, 1921 -----	137 50	
April 13	By First National Bank, interest on certificates -----	6 28	
April 19	By A. F. Menges, interest to to Aug. 18, 1921 -----	27 50	
May 2	By Aug. Halberslaben, interest Aug. 30, 1921 -----	55 00	
May 5	By Robt. O'Malley, interest to May 3, 1921 -----	110 00	
Sept. 13	By John O'Connell, interest to Sept. 12, 1921 -----	19 25	
Sept. 23	By First National Bank, interest on certificates -----	6 90	
Sept. 23	By Joseph Hornung, interest to Sept. 22, 1921 -----	137 50	
Oct. 19	By A. F. Menges, interest to Oct. 18, 1921 -----	27 50	
Nov. 1	By Aug. Halberslaben, interest to Oct. 30, 1921 -----	55 00	
Nov. 4	By Robt. C. O'Malley, interest to Nov. 3, 1921 -----	110 00	
Nov. 4	By First National Bank, interest on certificates -----	3 30	
			769 98
	To Paid Madison Park & Pleas- ure Drive Association one-half income, \$769.98, used on drives outside of the city -----	\$384 99	
	To Balance -----	15,478 88	
		\$15,863 87	\$15, 863 87

1922		
Jan. 1	By Balance -----	\$15,478 88

The above balance is invested in the name of the Madison Park and Pleasure Drive Association as Trustee of Mr. and Mrs. A. H. Hollister Park Fund as follows:

Joseph Hornung, mortgage, 5½%--	\$5,000 00
Aug. Halberslaben, mortgage 5½%	2,000 00
A. F. Menges, mortgage, 5½%---	1,000 00
Robt. C. O'Malley, mortgage, 5½%	4,000 00
John O'Connell, mortgage, 5½%--	700 00

Ole Gilbertson, mortgage, 6%----	2,300 95
U. S. of America certificates of indebtedness, 5½% -----	300 41
First National Bank, certificates of deposit, 2½, 3, 4%-----	93 37
First National Bank, certificates of deposit, 2½, 3, 4%-----	84 15
	<u>\$15,478 88</u>
Original capital	
Principal, Sept. 17, 1913 -----	\$12,279 61
Principal, Sept. 20, 1917 -----	212 75
	<u>\$12,492 36</u>
One-half income to Jan. 1, 1922---	2,986 52
	<u>\$15,478 88</u>

The Mary C. Stewart Memorial Fountain Fund

1921		
Jan. 1	By Balance from annual report -----	\$3,076 48
Dec. 31	By Interest to date -----	123 06
	To Balance -----	\$3,199 54
		<u>\$3,199 54</u>
		<u>\$3,199 54</u>
1922		
Jan. 1	By Balance -----	\$3,199 54

The above balance is invested in the name of the Madison Park and Pleasure Drive Association as Trustee of the Mrs. Stewart bequest as follows:

First National Bank certificates, 2½, 3, 4% -----	\$3,199 54
--	------------

D. K. TENNEY PARK FUND

1921		
Jan. 1	By Balance from annual report -----	\$1,020 72
May 9	By interest on U. S. of America certificate of indebtedness -----	18 24
Aug. 6	By received from the Golden Rule Association 3 Bonds signed by Solomon Levitan to Dec. 31, 1922 -----	1,500 00
Sept. 8	By interest on U. S. of America certificate of indebtedness -----	28 75
Nov. 6	By interest on First National Bank certificate -----	83

Dec.	1	By interest from Solomon Levitan to Dec. 1, 1921 -----		45 00
		To balance -----	\$2,613 54	
			\$2,613 54	\$2,613 54
1922	Jan.	1	By Balance -----	\$2,613 54

The above balance is invested as follows:

U. S. of America Certificate of indebtedness, 5¾% -----	\$1,000 00
Solomon Levitan, trust deed, 6%--	1,500 00
First National Bank, certificate of deposit, 2½, 3, 4%-----	18 24
First National Bank, certificate of deposit, 2½, 3, 4% -----	28 75
First National Bank, certificate of deposit, 2½, 3, 4% -----	21 55
First National Bank, certificate of deposit, 2½, 3, 4% -----	45 00
	\$2,613 54

HENRY VILAS PARK ZOO ACCOUNT

1921

Receipts

1921			
June	4	John Grinde -----	\$50 00
June	4	C. Frautschi & Sons -----	10 00
June	4	H. L. Moseley -----	5 00
June	4	Morgan Bros. -----	10 00
June	4	Wm. S. Marshall -----	10 00
June	4	A. J. Marschall -----	10 00
June	4	O. M. Nelson & Son -----	5 00
June	4	Edward Williams -----	5 00
June	4	Howard F. Weiss -----	5 00
June	4	M. J. Vincent -----	1 00
June	4	G. E. Gernon -----	2 50
June	4	Sherley F. Hobbins -----	10 00
June	6	Castle & Doyle -----	10 00
June	6	Fred M. Schlingen -----	5 00
June	6	F. J. Zoelle -----	1 00
June	6	General Agency Co. -----	5 00
June	6	Trachte Bros. Co. -----	5 00
June	6	H. S. Siggelko -----	1 00
June	6	Henry H. Steensland -----	5 00
June	6	Anna M. Vilas -----	25 00
June	6	E. B. Steensland -----	10 00
June	6	F. W. Huels -----	2 00
June	6	Louis E. Reber -----	2 00
June	6	Mrs. C. E. Whalen -----	5 00
June	6	C. E. Whelan -----	5 00
June	6	Belmont Hotel -----	10 00

June	6	Wm. E. Morgan -----	10 00
June	6	Ernest N. Warner -----	5 00
June	6	Mary E. V. Hanks -----	25 00
June	6	Association of Commerce -----	774 00
June	6	Railroad Jack -----	25 00
June	6	Cantwell Printing Company -----	5 00
June	6	Allen G. Park -----	5 00
June	6	Mrs. H. C. Zarton -----	5 00
June	6	M. M. Steensland -----	5 00
June	7	Henry R. Trumbower -----	5 00
June	7	James P. Garver -----	10 00
June	7	Board of Commerce -----	136 70
June	7	E. B. McGilvary -----	1 00
June	7	Samuel Farrell -----	5 00
June	7	C. W. Harrington -----	1 00
June	7	Walk Over Shoe Shop -----	5 00
June	7	Katharine Allen -----	3 00
June	7	Mautz Bros. -----	5 00
June	7	Margaret A. Allen -----	2 00
June	8	C. G. Dwight -----	752 28
June	8	Stephen W. Gilman -----	1 00
June	8	Ethel F. Kornhauser -----	1 00
June	8	John M. Olin -----	5 00
June	8	Wm. R. Bagley -----	50 00
June	8	John C. White -----	3 00
June	9	Marling Lumber Company -----	3 00
June	9	H. L. Butler -----	15 00
June	9	L. F. Schoelkopf -----	10 00
June	10	G. T. Gyte -----	1 00
June	11	F. W. Jacobs -----	5 00
June	13	Harlow S. Ott -----	5 00
June	14	Mary S. Cargill -----	25 00
June	15	The Outlet Store -----	1 00
June	20	C. G. Dwight -----	6 00
June	20	Wolff, Kubly & Hirsig Co. -----	15 00
June	21	Walter Mayer -----	5 00
June	21	Henry B. Gleason -----	2 00
July	6	Daniel W. Mead -----	10 00
Nov.	7	W. G. Doren -----	25 00
Total receipts -----			\$2,187 48

Disbursements

1921			
June	25	Heger & Harris, birds and fish -----	\$34 15
June	25	Ausel W. Robinson, animals -----	700 00
July	6	F. W. Winkelman, salary -----	80 00
July	6	Dwight Paper Co., buttons for tag day -----	200 00
July	23	Madison Association of Commerce, expense tag day -----	16 36
July	23	John Gallagher Co., rental of tents -----	21 00
July	23	Myron McPherson, posters -----	5 00
July	23	Aultman, show cards -----	3 00

July	23	Union Transfer & Storage Co., drayage on animals -----	2 25
Aug.	2	F. W. Winkelmann, July salary -----	83 33
Sept.	6	F. W. Winkelmann, Aug. salary -----	83 33
Sept.	21	Dalco Cab & Transfer Co. -----	2 00
Sept.	27	Mautz Bros. -----	7 30
Oct.	13	F. W. Winkelmann, Sept. salary -----	83 33
Nov.	4	F. W. Winkelmann, Oct. salary -----	83 33
Dec.	8	Yawkey-Crowley Lumber Co. -----	53 54
Dec.	9	F. W. Winkelmann, Nov. salary -----	83 33
Dec.	9	G. A. Larson, whistling swan -----	10 00
			\$2,187 48
Dec.	31	To balance in bank -----	\$1,551 25 636 23
			\$2,187 48
			\$2,187 48
1922			
Jan.	1	By balance -----	\$636 23

Respectfully submitted,

FRANK W. HOYT, *Treasurer.*

I hereby certify that I have examined the accounts of Frank W. Hoyt, treasurer, for the year 1921 and find them correct in all particulars.

Dated April 1, 1922.

ROBERT C. O'MALLEY.

SUBSCRIPTIONS FOR 1921

Achtenberg, C. A. -----	\$10 00	Critton, J. M. -----	5 00
Advance-Rumely Thresher Co. -----	10 00	Crowe, Miss B. C. -----	5 00
Allen, Miss Katherine ---	15 00	Crowley, Leo T. -----	25 00
Allison, M. B. -----	5 00	Deadman, C. A. -----	5 00
Allison, M. G. -----	2 00	Dean, Joseph -----	10 00
Andelson, Abe -----	10 00	Dithmar, J. T. -----	5 00
Andelson, Louis -----	10 00	Dolphin Club -----	7 50
Anderson, Wm. J. -----	5 00	Dudgeon, R. B. -----	5 00
Anonymous -----	25	Dye, A. A. -----	25 00
Armbrecht, George H. ---	5 00	Ekern, H. L. -----	10 00
Atwood, M. H. -----	5 00	Ela, Emerson -----	15 00
Badger State Shoe Co. ---	25 00	Ellman, George -----	2 00
Bagley, Wm. R. -----	25 00	Elsom, J. C. -----	3 00
Baker, N. D. -----	5 00	Elver, Elmore T. -----	10 00
Bean, E. F. -----	5 00	Fairchild, Mrs. F. B. ---	25 00
Bergh, M. C. -----	10 00	Fauerbach Brewing Co. --	10 00
Bitterman, J. C. -----	10 00	Fauerbach, Philip -----	5 00
Blackburn, A. C. -----	10 00	Ferguson, W. F. -----	5 00
Blake, Chauncey E. -----	5 00	Findorff, J. H. & Son ---	15 00
Blied, John J. -----	5 00	Fish & Schulkamp -----	10 00
Blied Printing Co. -----	5 00	Fischer, Richard -----	10 00
Boyd, John L. -----	15 00	Fjelstad, G. J. -----	5 00
Boyd, Joseph M. -----	5 00	Flint, Albert S. -----	6 00
Boyd, Joseph M. Co. ---	15 00	Forbes-Meagher Music Co.	5 00
Botham, George W. -----	15 00	Fox, A. O. -----	15 00
Boyce, S. R. -----	10 00	Fox, J. H. -----	5 00
Bradley, Mrs. H. C. -----	25 00	Fox, Philip R. -----	15 00
Brittingham, T. E. -----	25 00	Frautschi, C., & Sons ---	10 00
Brown, Charles N. -----	10 00	Frautschi, E. J. -----	10 00
Brown, E. A. -----	5 00	Frederickson, A. D. ---	10 00
Buell, C. E. -----	10 00	Frish, A. M. -----	10 00
Burger, Peter -----	10 00	Fritz, C. B. -----	15 00
Butler, H. L. -----	15 00	Gallagher, John -----	5 00
Cady, Emil C. -----	4 00	Ganser, Wm. J. -----	15 00
Cantwell Printing Co. ---	25 00	Garver, James R. -----	10 00
Castle & Doyle -----	10 00	Geffert, Louis A. -----	3 00
Chapman, C. B. -----	25 00	General Agency Co. ---	5 00
Chase, W. J. -----	15 00	Giddings, W. E. -----	15 00
Cochram, Joseph W. -----	5 00	Gilbert, E. M. -----	5 00
Coe, J. H. -----	10 00	Gilman, Stephen W. ---	5 00
Cole, Leon J. -----	3 00	Glenz, A. H. -----	5 00
Coleman, Thomas E. -----	25 00	Gregg, George F. -----	5 00
Collins Bros. Lbr. Co. ---	10 00	Greig, George T. -----	5 00
Collyer, B. B. -----	5 00	Grimm, John J. -----	5 00
Commons, John R. -----	10 00	Grinde, John -----	10 00
Comstock, George C. ---	5 00	Groves, John W. -----	5 00
Conklin & Sons Co. ---	25 00	Haas, Herman -----	15 00
Conover, Allan D. -----	10 00	Hagan, Milo C. -----	5 00
Corscot, John -----	5 00		
Crescent Clothing Co. ---	15 00		

Haley, Harry B. -----	5 00	La Follette, R. M. -----	10 00
Haley, John C., & Sons ---	5 00	Laird, A. G. -----	5 00
Hall, F. W. -----	5 00	Larson, A. C. -----	10 00
Halligan, B. J. -----	10 00	Law, A. R. -----	5 00
Hanks, L. M. -----	15 00	Law, James R. -----	5 00
Hanks, L. S. -----	15 00	Lindsay, W. T. -----	15 00
Hanks, Stanley -----	10 00	Loftsgorden, H. J. -----	10 00
Harloff-Loprich Elec. Co. ---	10 00	Loomis, Mrs. F. S. -----	5 00
Hart, Walter W. -----	5 00	Loveland, R. E. -----	2 00
Hastings, E. G. -----	5 00	Lunstrum, Lewis -----	5 00
Hatch, K. L. -----	5 00	Lyons, Thomas E. -----	10 00
Hauk, Henry -----	5 00		
Hausman, Carl -----	25 00	McCarthy, T. C. -----	25 00
Hazelwood, John A. -----	5 00	McKay, W. J. -----	3 00
Hedquist, O. O. -----	5 00	McKenna, J. C. -----	5 00
Hefty, T. R. -----	5 00	Mack, John G. D. -----	5 00
Helstrom, A. B. -----	10 00	Madison Cement Stave & Silo Co. -----	20 00
Herfurth, Theodore -----	10 00	Madison Gas & Electric Co. -----	25 00
Hill, Carl N. -----	10 00	Madison Packing Co. ----	5 00
Hobbins, J. N. -----	10 00	Madison Realty Co. -----	50 00
Hoffman Feed Co. -----	10 00	Mansfield-Caughey Co. --	5 00
Holt, J. C. -----	2 50	Marlatt, Miss A. L. -----	5 00
Holmes, George C. -----	5 00	Marling, W. A. -----	10 00
Hook, F. B. -----	5 00	Marschall, A. J. -----	25 00
Hopkins, Andrew W. -----	5 00	Marshall, Wm. S. -----	20 00
Hoppman, A. C. -----	5 00	Martens, Conrad F. -----	5 00
Hotchkiss, W. O. -----	10 00	Mason, Max -----	10 00
Hoyt, Frank W. -----	25 00	Mautz Bros. -----	15 00
Hudson, Charles H. -----	5 00	Mayers, Andrew A. -----	10 00
Humiston, F. W. -----	5 00	Mead, D. W. -----	25 00
Humphrey, George C. -----	7 50	Menges, A. F. -----	10 00
Hurd, R. W. -----	5 00	Merz, A. X. -----	20 00
		Michelson, A. G. -----	5 00
Icke, John F. -----	10 00	Moehlman Grain & Pro- duce Co. -----	5 00
Ingersoll, L. R. -----	3 00	Montgomery, F. W. -----	25 00
Jackson, Reginald H. -----	15 00	Moore, R. A. -----	5 00
Jacobs, Frank W. -----	10 00	Moran, John -----	10 00
Jansky, C. M. -----	5 00	Morgan Bros. -----	10 00
Jarvis, C. W. -----	3 00	Moseley Book Co. -----	20 00
Johnson, Carl A. -----	50 00	Mowry, Don E. -----	5 00
Johnson, Hobart S. -----	25 00	Mueller, W. H. -----	5 00
Jones, Burr W. -----	25 00	Myrland, A. J. -----	5 00
Karstens, F. W. -----	10 00	Neckerman, George M. ---	5 00
Kayser, A. H. -----	10 00	Nelson, George W. -----	10 00
Kennedy Dairy Co. -----	25 00	Nelson, M. L. -----	5 00
Kindschi, George W. -----	5 00	Nelson, O. M. & Son -----	5 00
Kindschi, M. R. -----	5 00	Nelson, R. N. -----	5 00
Kirchoffer, W. G. -----	10 00	Netherwood, H. C. -----	5 00
Kittleston, I. M. -----	5 00	New York Store -----	10 00
Kney, E. O. -----	5 00	Nichols, H. E. -----	5 00
Knox, P. B. -----	10 00	Noe, Mrs. W. C. -----	25 00
Koch, Henry -----	10 00	Norgord, C. P. -----	5 00
Kornhauser, Alexander -----	10 00	Norsman, O. S. -----	5 00
Krauskopf, Francis C. ---	2 00	Northwestern Securities Co. -----	10 00
Kroncke, George -----	10 00		
Kropf, R. R. -----	5 00		
Krueger & Tandvig -----	10 00		

Oakley, F. W. -----	15 00	Sheldon, Charles S. -----	5 00
Olbrich, M. B. -----	10 00	Simon, Fred N. -----	5 00
Olin, John M. -----	25 00	Smith, Edward H. -----	5 00
Olson, O. C. -----	5 00	Smith, Howard L. -----	5 00
Olson & Veerhusen Co. -----	25 00	Smith, Lathrop E. -----	5 00
O'Malley, Robert C. -----	10 00	Smith, Leonard S. -----	5 00
O'Shea, M. V. -----	5 00	Smith, Walter M. -----	5 00
Ott, Harlow S. -----	5 00	Smythe, H. A., Jr. -----	5 00
Overton, J. B. -----	10 00	Snow, Benjamin W. -----	5 00
Owen, W. C. -----	10 00	St. John, John W. -----	10 00
Owens, William -----	10 00	Stebbins, Byron H. -----	10 00
		Steensland Land Co. -----	30 00
Palmer, J. H. -----	10 00	Steffen, A. W. -----	3 00
Paltz Bros. -----	10 00	Stehr, Wm. C. -----	5 00
Park Hotel Co. -----	25 00	Stevens, E. Ray -----	10 00
Parke, H. J. -----	5 00	Stevens, Mrs. B. J. -----	25 00
Parker Co. -----	5 00	Stewart, Mrs. C. B. -----	5 00
Parkinson, E. E. -----	5 00	Stitgen, Ben -----	5 00
Parkinson, J. B. -----	5 00	Struck & Irwin Fuel Co. -----	10 00
Pepper, John W. -----	5 00		
Photoart House -----	10 00	Taylor, Richard F. -----	5 00
Pickford, H. W. -----	5 00	Teckemeyer, W. J. -----	15 00
Piper Bros. -----	25 00	Tenney, Charles H. -----	10 00
Powers, Wm. M. -----	5 00	Thompson, H. L. -----	5 00
		Thorkelson, H. J. -----	15 00
Qualley, R. N. -----	2 00	Thwaites, F. T. -----	5 00
Quann, Mike -----	5 00	Thwaites, Mrs. R. G. -----	5 00
		Torkelson, M. W. -----	10 00
Rayne, George T. -----	15 00	Tormey, Thomas W. -----	10 00
Reed, Frank D. -----	10 00	Trachte Bros. Co. -----	10 00
Rennebohm, Oscar -----	10 00	Tracy & Kilgore -----	10 00
Richards, H. S. -----	5 00	Tressler, A. W. -----	10 00
Riley, Charles G. -----	5 00	Trumbower, Henry R. -----	10 00
Ritter Automobile Co. -----	15 00	Turneure, F. E. -----	10 00
Rogers, Alfred T. -----	10 00		
Ross, E. A. -----	7 50	University Co-Operative	
Roys, W. B. -----	10 00	Co. -----	15 00
Royston, R. T. -----	10 00	Utter, Arthur O. -----	5 00
Rundell, S. P. -----	10 00		
		Vilas, Mrs. Anna M. -----	25 00
Sammis, J. L. -----	2 00	Vinje, A. J. -----	10 00
Sanborn, John B. -----	10 00		
Sanderson, C. H., & Co. -----	10 00	Wagner, George -----	10 00
Sater, M. H. -----	5 00	Warner, Ernest N. -----	25 00
Sayle, George C. -----	10 00	Waterman, H. G. -----	5 00
Scanlan Morris Co. -----	10 00	Withey, M. O. -----	5 00
Schenk, H. C. -----	10 00	Wolf, H. C. -----	5 00
Schlimgen, Fred M. -----	15 00	Wolff, Kubly & Hirsig Co. -----	10 00
Schmitz, August J. -----	5 00	Wood, Kent T. -----	5 00
Schoelkopf, L. F. -----	25 00	Worcester, Edward S. -----	5 00
Schoen, Frank -----	5 00		
Schulz, August F. -----	5 00	Young, Edward J. -----	10 00
Schulz, Herman -----	5 00	Young, Karl -----	10 00
Schumacher, Wm. -----	5 00		
Schwogeler, William -----	5 00	Zimmerman, A. G. -----	5 00
Seastone, C. V. -----	10 00	Zoelle, F. J. -----	5 00

Acacia -----	10 00	Sigma Chi -----	15 00
Alpha Gamma Rho -----	5 00	Sigma Nu -----	15 00
Alpha Sigma Phi -----	15 00	Sigma Phi -----	5 00
Chi Psi -----	15 00	Tau Kappa Epsilon -----	15 00
Delta Tau Delta -----	10 00	Theta Delta Chi -----	15 00
Phi Delta Theta -----	15 00	Theta Xi -----	10 00
Pi Kappa Alpha -----	10 00		
Psi Upsilon -----	15 00	Total -----	\$3,208 25

Subscriptions to M. B. Olbrich Fund for Purchase of Athletic Field

Allison, M. B. -----	\$25 00	Haswell, Clayton W. ----	25 00
American Exchange Bank	100 00	Heddles, W. S. -----	100 00
Baillie, E. T. -----	25 00	Hopkins, R. L. -----	100 00
Blied, Joseph H. -----	50 00	Hooper, C. A. -----	150 00
Brandenburg, O. D. -----	100 00	Hoppman, A. C. -----	100 00
Bridgman, L. W. -----	300 00	Hoyt, Ralph -----	25 00
Brossard, E. E. -----	100 00	Hutchcroft, L. W. -----	150 00
Brown, Charles N. -----	50 00	Icke, John F. -----	100 00
Caesar, Elmer -----	50 00	J. Johnson, A. E. -----	50 00
Capital Times -----	100 00	Law, J. R. and E. J. ----	25 00
Chapman, C. B. -----	25 00	Loftsgordon, Herman L. --	100 00
Chipman, H. A. (Stoughton)	500 00	Loftsgordon, Martin -----	100 00
Cnare, George C., & Sons	100 00	Lyons, Thomas -----	50 00
Cousins, Marshall -----	100 00	McKee, Jerry V. -----	25 00
Crescent Clothing Co. --	50 00	McMillen, Clifford -----	100 00
Dietrich & Denu -----	25 00	Marks, Roy -----	25 00
Dow, Charles M. -----	25 00	Mathews, George C. -----	50 00
Dreher, J. S. -----	25 00	Miller, Alex. G. (Verona)	100 00
Duckert, R. F. -----	25 00	Miller, C. L. -----	100 00
Dunn, M. L. -----	25 00	Miller, S. E. -----	25 00
Ekern, Herman L. -----	400 00	Moran, John -----	50 00
Ficks, C. D. -----	100 00	Moss, W. T. (Ladysmith)	200 00
Fox Motor Sales Co. ----	25 00	Murray, T. G. -----	100 00
Gallagher, Clyde A. -----	100 00	Myrland, A. J. -----	25 00
Gallagher, R. D. -----	25 00	Neesvig, O. -----	25 00
Garver, James R. -----	50 00	Netherwood, H. C. -----	25 00
Gettle, L. E. -----	100 00	Oetking, T. G. -----	100 00
Greig, George T. (Timber Lake, N. D.)	100 00	Olbrich, I. W. -----	100 00
Gunderson, L. C. -----	50 00	Olbrich, Jacob (Harvard, Ill.)	100 00
Harper, C. A. -----	200 00	Olbrich, M. B. -----	100 00
Harper, Charles L. -----	50 00	Olson, Oscar -----	25 00
		O'Malley, R. C. -----	100 00
		O'Neill, Charles -----	25 00



OLBRICH PURCHASE

Peterson, A. R. -----	25 00	Stevens, E. R. -----	100 00
Phillips, G. W. -----	25 00	Thorkelson, M. W. -----	100 00
Purcell, H. E. -----	25 00	Tormey, Albert -----	25 00
		Tormey, Thomas W. ----	100 00
Reed, Frank D. -----	100 00		
Reuter, Jackson -----	100 00	Uehling, A. T. -----	25 00
Riley, J. W. -----	25 00		
		Warner, Ernest N. -----	25 00
Salzman, J. G. -----	25 00	Welton Co. -----	50 00
Sander, Wm. R. -----	50 00	Whalen, W. P. -----	25 00
Schen, H. C., Hardware		Wilcox, F. M. -----	50 00
Co. -----	250 00	Wisconsin State Journal-	100 00
Shaffer, C. E. -----	50 00	Witte, E. E. -----	25 00
Shakshesky, L. W. -----	300 00	Wolf, Kubly & Hirsig --	100 00
Sheldon, W. H. -----	25 00		
Siebecker, R. G. -----	100 00	Zander, Henry M. -----	100 00
Stark, Sanford P. -----	100 00		
		Total -----	\$7,500 00

Subscriptions to M. B. Olbrich Fund for Purchase of Park Tract

Aberg, Wm. J. P. -----	\$25 00	Crawford, Robert -----	25 00
Ahrensmeyer, Arthur ---	25 00	Cremer, Charles F. -----	5 00
Aylward, R. C. -----	50 00	Crowley, Leo -----	100 00
		Crownhart, C. H. -----	100 00
Bagley, Wm. R. -----	100 00		
Baldwin, Z. -----	25 00	Davies, Joseph E., and	
Ballinger, W. L. -----	25 00	Reinsch, Paul S. -----	500 00
Bewick, T. W. -----	50 00	Doerfler, Christian -----	100 00
Blum, John -----	100 00	Dunlap, A. A. -----	5 00
Blum, Joseph -----	25 00		
Borden, J. B. -----	100 00	East Side Motor Co. ----	25 00
Bornstein, N. -----	25 00	Edison, Miss -----	10 00
Bosben, T. K. -----	50 00	Evans, J. S. -----	100 00
Boyd, J. M., Company ---	500 00	Elver, R. F. -----	10 00
Briggs, S. J. -----	100 00	Ely, E. R. -----	100 00
Brown, Fred M. -----	150 00		
		Fauerbach Brewing Co. ---	50 00
Callahan, John -----	25 00	Fehlau, G. W. -----	5 00
Cannon, F. A. -----	25 00	Feldman, Jacob -----	25 00
Cantwell Printing Co. --	100 00	Finnegan, B. -----	100 00
Canwright, G. S. -----	25 00	Fosdick, A. L. -----	5 00
Capital Times -----	100 00	Frautschi, C., & Sons ---	100 00
Castle & Doyle -----	100 00	French, Harry R. -----	50 00
Chipman, H. A. -----	400 00		
Chorlog, J. K. -----	25 00	Gary, George E. -----	100 00
Clark, H. J. -----	50 00	Gastrow, F. E. -----	50 00
Cohen, F. -----	100 00	Gilbert, H. A. -----	100 00
Collins, W. H. -----	100 00	Gillette, W. L. -----	25 00
Conklin & Sons Co. ----	100 00	Gilman, Stephen W. ----	100 00

Gordon, L. A. -----	50 00	Mennes, J. L. -----	25 00
Groves, John W. -----	25 00	Messerschmidt, J. E. ---	25 00
Haak, William -----	200 00	Michelson, A. G. -----	100 00
Hanks, L. M. -----	100 00	Mueller, W. H. -----	25 00
Hanks, S. C. -----	50 00	Neckerson, R. J. -----	100 00
Harper, J. C. -----	50 00	Nelson, George -----	100 00
Hazelwood, John A. ---	25 00	Nelson, Robert N. -----	25 00
Head, L. R. -----	25 00	Newman, W. O. -----	100 00
Hengel, H. C. -----	15 00	Nichols, Harvey E. -----	100 00
Herfurth, Theo. -----	100 00	Nordman, Ed. -----	50 00
Hintze, Phil -----	150 00	Norgord, C. P. -----	50 00
Hirst, A. R. -----	50 00	Oeland, L. L. -----	50 00
Holmes, Fred L. -----	25 00	Olbrich, Isabel, Jr. -----	5 00
Hovey, M. H. -----	100 00	Olbrich, Jacob -----	200 00
Hoyt, Frank W. -----	100 00	Olbrich, John C. -----	200 00
Huels, F. W. -----	25 00	Olbrich, M. B. -----	5,000 00
Icke, John F. -----	25 00	Oscar, S. A. -----	25 00
Ingold, Charles P. -----	25 00	Owen, W. C. -----	100 00
Jackson, Carl D. -----	100 00	Parker, E. E. -----	50 00
Johnson, Marcus -----	25 00	Platt, Chester C. -----	50 00
Jones, Burr W. -----	100 00	Porter, P. H. -----	50 00
Karstens, F. W. -----	100 00	Ratcliffe, H. H. -----	25 00
Kayser, A. H. -----	300 00	Reindahl, Knute -----	50 00
Kelley, V. H. -----	25 00	Rentschler, Fred -----	25 00
Kirchoffer, W. G. -----	10 00	Reynolds, E. J. -----	15 00
Kopp, M. H. -----	25 00	Riley, George C. -----	25 00
Kornhauser, Alexander -	50 00	Rinder, Arthur -----	5 00
Kroncke, George -----	25 00	Rosa, C. D. -----	100 00
Larson, M. D. -----	25 00	Rose, P. J. -----	15 00
L'Hommedieu-Gasser		Rosenberry, M. B. -----	100 00
Agency -----	25 00	Ross, E. A. -----	20 00
Lindsay, H. -----	100 00	Rowley, L. M. -----	25 00
Loftsgordon, Otto -----	100 00	Sanderson, C. H. -----	50 00
Lucky, Claude C. -----	25 00	Sanderson, F. W. -----	100 00
McCarthy, J. L. -----	25 00	Sauthoff, Harry -----	25 00
McLeod, Arthur A. -----	100 00	Schenk, F., Estate -----	100 00
McMillen, C. L. -----	50 00	Schenk-Huegel Co. -----	100 00
Mack, J. D. G. -----	50 00	Schoelkopf, L. F. -----	100 00
Mackin, James -----	10 00	Schubert Candy Co. -----	100 00
Madison Kipp Corpora-		SeCheverell, S. D. -----	25 00
tion -----	500 00	Shakshesky, L. W. -----	500 00
Madison Gas & Electric		Sinaiko, Albert -----	50 00
Co. -----	100 00	Sinaiko, Sol -----	10 00
Madison Realty Co. -----	100 00	Slinde, Hans -----	5 00
Mahan, Flora Belle -----	25 00	Smith, Albert E. -----	25 00
Marschall, A. J. -----	100 00	Smith, E. H. -----	25 00
Mason, Vroman -----	25 00	Soelch, J. F. -----	50 00
Mead, D. W. -----	100 00	Sprecher, George -----	10 00
Menges Pharmacies ----	50 00	Stark Land Co. -----	50 00
		Steensland, E. B. -----	100 00
		Stein Brothers -----	10 00

Struckmeyer, H. C. -----	50 00	Walterscheid, Ben -----	\$50 00
Swenson, Magnus -----	100 00	Walterscheid, John -----	100 00
		Warner, H. M. -----	100 00
Taylor, Edwin F. -----	25 00	Whalen, Charles E. -----	100 00
Teckemeyer Candy Co.---	100 00	Wisconsin State Journal---	100 00
Tenney, Charles H. -----	100 00	Woldenberg, S. A. -----	25 00
Tressler, A. W. -----	100 00	Wootton, F. M. -----	50 00
Trumbower, Henry R.---	100 00	Wrabetz, Voyta -----	25 00
Turneure, F. E. -----	25 00		
Vitense, William -----	5 00	Yawkey-Crowley Lbr. Co.	100 00
		Young, Edward J. -----	100 00
Walden, E. J. -----	25 00	Total -----	<u>\$17,350 00</u>



SACRED WHITE FALLOW DEER—(*Dama vulgaris*)

Balance Sheet

By City Auditor

STATEMENT OF DETAIL OPERATION, MAINTENANCE, AND OUTLAY EXPENDITURES OF PUBLIC
PARKS AND PLAYGROUNDS FOR PERIOD JANUARY 1, 1921, TO DECEMBER 31, 1921

Account	Expenditure	Budget Appropriation	Unexpended Balance	Overdraft
ADMINISTRATION				
Salaries and Wages -----	\$2,839 95	\$2,950 00	\$120 05	-----
Printing, Stationery and Office Expense -----	130 48	200 00	69 52	-----
	\$2,960 43	\$3,150 00	\$189 57	-----
MONONA SKATING RINK				
Salaries and Wages -----	\$250 00	\$500 00	\$250 00	-----
TENNEY PARK AND PARKWAY				
Salaries and Wages -----	\$ 3,769 53	\$4,230 00	\$460 47	-----
General Supplies -----	47 60	76 50	28 90	-----
Heat, Light, Power and Water -----	141 05	32 40	-----	\$108 65
Repairs and Replacements -----	477 04	1,110 00	632 96	-----
Real Estate and Structures -----	1,349 40	1,069 40	-----	280 00
Bridges -----	18 75	-----	-----	18 75
	\$5,803 37	\$6,518 30	\$1,122 33	\$407 40

STATEMENT OF DETAIL OPERATION, MAINTENANCE, AND OUTLAY EXPENDITURES OF PUBLIC
PARKS AND PLAYGROUNDS FOR PERIOD JANUARY 1, 1921, TO DECEMBER 31, 1921, CONTINUED

Account	Expenditure	Budget Appropriation	Unexpended Balance	Overdraft
TENNEY PARK BATHHOUSE				
Salaries and Wages -----	\$1,352 46	\$1,382 50	\$30 04	-----
Printing, Stationery and Office Expense -----	17 02	18 00	98	-----
Rent and Insurance -----	22 40	28 00	5 60	-----
General Supplies -----	24 43	22 90	-----	1 53
Laundry and Janitor Supplies -----	208 45	168 76	-----	39 75
Medical Supplies -----	2 70	10 80	8 10	-----
Heat, Light, Power and Water -----	51 34	103 85	52 51	-----
Dry Goods, Bedding and Clothing -----	163 87	211 90	48 03	-----
Repairs and Replacements -----	202 54	295 00	92 46	-----
Real Estate and Structures -----	690 54	945 00	254 46	-----
	\$2,735 75	\$3,186 65	\$492 18	\$41 28
TENNEY PARK LAVATORY				
Laundry and Janitor Supplies -----		\$20 85	\$20 85	-----
Medical Supplies -----		2 00	2 00	-----
Heat, Light, Power and Water -----		20 00	20 00	-----
Repairs and Replacements -----	\$68 28	108 00	39 72	-----
	\$68 28	\$150 85	\$82 57	-----

STATEMENT OF DETAIL OPERATION, MAINTENANCE, AND OUTLAY EXPENDITURES OF PUBLIC
PARKS AND PLAYGROUNDS FOR PERIOD JANUARY 1, 1921, TO DECEMBER 31, 1921, CONTINUED

Account	Expenditure	Budget Appropriation	Unexpended Balance	Overdraft
GENERAL PARK EQUIPMENT				
Salaries and Wages -----	\$431 18	\$700 00	\$268 82	-----
General Supplies -----	182 72	199 20	16 48	-----
Laundry and Janitor Supplies -----	18 34	-----	-----	\$18 34
Heat, Light, Power and Water -----	86 36	160 00	73 64	-----
Stable and Garage Expense -----	1,749 92	1,800 70	50 78	-----
Repairs and Replacements -----	412 77	-----	-----	412 77
Apparatus and Department Equipment -----	613 97	1,000 00	386 03	-----
	\$3,495 26	\$3,859 90	\$795 75	\$431 11
BRITTINGHAM PARK				
Salaries and Wages -----	\$3,229 96	\$3,650 00	\$420 04	-----
General Supplies -----	3 50	360 50	357 00	-----
Heat, Light, Power and Water -----	3 38	10 00	6 62	-----
Repairs and Replacements -----	273 26	225 00	-----	48 26
	\$3,510 10	\$4,245 50	\$783 66	\$48 26

STATEMENT OF DETAIL OPERATION, MAINTENANCE, AND OUTLAY EXPENDITURES OF PUBLIC
PARKS AND PLAYGROUNDS FOR PERIOD JANUARY 1, 1921, TO DECEMBER 31, 1921, CONTINUED

Account	Expenditure	Budget Appropriation	Unexpended Balance	Overdraft
BRITTINGHAM PARK BOATHOUSE				
Salaries and Wages -----	\$880 00	\$880 00	-----	-----
Printing, Stationery and Office Expense ----	21 48	30 00	\$8 52	-----
Rent and Insurance -----	171 00	150 00	-----	\$21 00
General Supplies -----	4 20	7 20	3 00	-----
Laundry and Janitor Supplies -----	1 08	5 10	4 02	-----
Medical Supplies -----	-----	1 90	1 90	-----
Heat, Light, Power and Water -----	65 76	69 90	4 14	-----
Repairs and Replacements -----	-----	35 00	35 00	-----
	\$1,143 52	\$1,179 10	\$56 58	\$21 00
BRITTINGHAM PARK BATHHOUSE				
Salaries and Wages -----	\$1,035 94	\$1,162 50	126 56	-----
Printing, Stationery and Office Expense ----	21 82	18 00	-----	\$3 82
Rent and Insurance -----	-----	63 90	63 90	-----
General Supplies -----	13 20	66 90	53 70	-----
Laundry and Janitor Supplies -----	119 29	87 70	-----	31 59
Medical Supplies -----	2 70	10 80	8 10	-----
Heat, Light, Power and Water -----	116 31	125 20	8 89	-----
Dry Goods, Bedding and Clothing -----	85 88	131 90	46 02	-----
Repairs and Replacements -----	62 22	160 00	97 78	-----
	\$1,457 36	\$1,826 90	\$404 95	\$35 41

STATEMENT OF DETAIL OPERATION, MAINTENANCE, AND OUTLAY EXPENDITURES OF PUBLIC
PARKS AND PLAYGROUNDS FOR PERIOD JANUARY 1, 1921, TO DECEMBER 31, 1921, CONTINUED

72

Madison Park and Pleasure Drive Association

Account	Expenditure	Budget Appropriation	Unexpended Balance	Overdraft
HENRY VILAS PARK				
Salaries and Wages -----	\$4,322 11	\$4,240 00	-----	\$82 11
Printing, Stationery and Office Expense -----	5 00	20 00	\$15 00	-----
General Supplies -----	24 03	416 00	391 97	-----
Heat, Light, Power and Water -----	66 53	92 59	26 06	-----
Dry Goods, Bedding and Clothing -----	-----	6 50	6 50	-----
Repairs and Replacements -----	161 05	210 00	48 95	-----
Real Estate and Structures -----	686 64	1,302 38	615 74	-----
	\$5,265 36	\$6,287 47	\$1,104 22	\$82 11
HENRY VILAS PARK ZOO				
Salaries and Wages -----	\$11,245 24	\$10,630 00	-----	\$615 24
Printing, Stationery and Office Expenses -----	57 15	95 00	\$37 85	-----
Freight and Express -----	5 75	-----	-----	5 75
Rent and Insurance -----	31 70	131 70	100 00	-----
General Supplies -----	274 75	461 85	187 10	-----
Laundry and Janitor Supplies -----	81 78	117 05	35 27	-----
Medical Supplies -----	34 10	35 00	90	-----
Heat, Light, Power and Water -----	3,001 69	2,590 00	-----	411 69
Dry Goods, Bedding and Clothing -----	31 15	36 60	5 45	-----
Stable and Garage Expense -----	7,594 16	9,317 75	1,723 59	-----
Repairs and Replacements -----	172 57	585 00	412 43	-----
Furniture and Fixtures -----	50 00	50 00	-----	-----
Real Estate and Structures -----	458 55	950 00	491 45	-----
	\$23,038 59	\$24,999 95	\$2,994 04	\$1,032 68

STATEMENT OF DETAIL OPERATION, MAINTENANCE, AND OUTLAY EXPENDITURES OF PUBLIC
PARKS AND PLAYGROUNDS FOR PERIOD JANUARY 1, 1921, TO DECEMBER 31, 1921, CONTINUED

Account	Expenditure	Budget Appropriation	Unexpended Balance	Overdraft
HENRY VILAS LAVATORY				
General Supplies -----	\$26 16	\$47 50	\$21 34	-----
Laundry and Janitor Supplies -----	17 21	29 00	11 79	-----
Medical Supplies -----		6 80	6 80	-----
Heat, Light, Power and Water -----	206 40	200 56	-----	\$5 84
	\$249 77	\$283 86	\$39 93	\$5 84
SPAIGHT STREET PARK				
Salaries and Wages -----	\$233 67	\$150 00	-----	\$83 67
ORTON PARK				
Salaries and Wages -----	\$293 64	\$250 00	-----	\$43 64
BURROWS PARK				
Salaries and Wages -----	\$296 10	\$200 00	-----	\$96 10

STATEMENT OF DETAIL OPERATION, MAINTENANCE, AND OUTLAY EXPENDITURES OF PUBLIC
PARKS AND PLAYGROUNDS FOR PERIOD JANUARY 1, 1921, TO DECEMBER 31, 1921, CONTINUED

Account	Expenditure	Budget Appropriation	Unexpended Balance	Overdraft
LAKE FRONT PARK				
Salaries and Wages -----	\$573 32	\$590 00	-----	\$23 32
Real Estate and Structures -----	377 70	377 70	-----	-----
	\$951 02	\$927 70	-----	\$23 32
WASHINGTON BOULEVARD				
Salaries and Wages -----	\$176 34	\$150 00	-----	\$26 34
MAPLE PARK				
Salaries and Wages -----	\$101 81	\$150 00	\$48 19	-----
SPOONER STREET VIADUCT				
Salaries and Wages -----	\$13 87	\$25 00	\$11 13	-----

STATEMENT OF DETAIL OPERATION, MAINTENANCE, AND OUTLAY EXPENDITURES OF PUBLIC
PARKS AND PLAYGROUNDS FOR PERIOD JANUARY 1, 1921, TO DECEMBER 31, 1921, CONTINUED

Account	Expenditure	Budget Appropriation	Unexpended Balance	Overdraft
OLIVE JONES FIELD				
Salaries and Wages -----	\$75 77	\$50 00		\$25 77
Real Estate and Structures -----	147 58	147 58		
	\$223 35	\$197 58		\$25 77
BURR JONES FIELD				
Salaries and Wages -----		\$75 00	\$75 00	
Real Estate and Structures -----	\$134 40	134 80	40	
	\$134 40	\$209 80	\$75 40	
KENDALL PARK				
Salaries and Wages -----	\$46 68	\$75 00	\$28 32	
Real Estate and Structures -----	389 70	389 70		
	\$436 38	\$464 70	\$28 32	

STATEMENT OF DETAIL OPERATION, MAINTENANCE, AND OUTLAY EXPENDITURES OF PUBLIC
PARKS AND PLAYGROUNDS FOR PERIOD JANUARY 1, 1921, TO DECEMBER 31, 1921, CONTINUED

Account	Expenditure	Budget Appropriation	Unexpended Balance	Overdraft
WASHINGTON OVAL				
Salaries and Wages -----	\$175 92	\$125 00	-----	\$50 92
MORRISON STREET PARK				
Salaries and Wages -----	\$34 30	\$50 00	\$15 70	-----
Real Estate and Structures -----	52 82	52 82	-----	-----
	\$87 12	\$102 82	\$15 70	-----
OWEN PARKWAY				
Salaries and Wages -----	\$150 00	\$150 00	-----	-----
MADISON GENERAL HOSPITAL				
Salaries and Wages -----	\$64 26	\$75 00	\$10 74	-----

STATEMENT OF DETAIL OPERATION, MAINTENANCE, AND OUTLAY EXPENDITURES OF PUBLIC
PARKS AND PLAYGROUNDS FOR PERIOD JANUARY 1, 1921, TO DECEMBER 31, 1921, CONTINUED

Account	Expenditure	Budget Appropriation	Unexpended Budget	Overdraft
EVERGREEN PARK				
Salaries and Wages -----	\$51 73	\$25 00	-----	\$26 73
QUARANTINE HOSPITAL				
Salaries and Wages -----	\$30 64	\$30 00	-----	\$ 64
WILLOWS				
Salaries and Wages -----	\$173 31	-----	-----	\$173 31
Material and Supplies -----	35 00	-----	-----	35 00
	\$208 31	-----	-----	\$208 31
STREET ENDS				
Real Estate and Structures -----	\$102 94	\$215 00	\$112 06	-----



BURROWS PARK

STATEMENT OF DETAIL OPERATION, MAINTENANCE, AND OUTLAY EXPENDITURES OF PUBLIC
PARKS AND PLAYGROUNDS FOR PERIOD JANUARY 1, 1921, TO DECEMBER 31, 1921, CONTINUED

Account	Expenditure	Budget Appropriation	Unexpended Balance	Overdraft
OUTSIDE DRIVES Appropriation -----	\$3,000 00	\$3,000 00	-----	-----
TOTAL BUDGET APPROPRIATION, PARKS -----			\$37,636 13	-----
TOTAL EXPENDITURES AND JOURNAL TRANSFERS, PARKS -----				\$33,670 70
UNEXPENDED BALANCE, PARKS -----				3,965 43
			<u>\$37,636 13</u>	<u>\$37,636 13</u>
TOTAL BUDGET APPROPRIATION, HENRY VILAS PARK ZOO -----			\$24,999 95	
TOTAL EXPENDITURES AND JOURNAL TRANSFERS, HENRY VILAS PARK ZOO -----				\$23,038 59
UNEXPENDED BALANCE, HENRY VILAS PARK ZOO -----				1,961 36
			<u>\$24,999 95</u>	<u>\$24,999 95</u>

ANIMALS IN THE ZOOLOGICAL COLLECTION AT HENRY VILAS PARK

April 1, 1922

Mammals			
<i>Marsupiala</i>	No. of Specimens		
Parma wallaby kangaroo	1	Prairie-dog	6
(<i>Macropus parma</i>)		(<i>Cynomys ludovicianus</i>)	
		Canadian Porcupine	4
		(<i>Erethizon dorsatus</i>)	
		Guinea pig	12
		(<i>Cavia porcellus</i>)	
<i>Carnivora</i>			
European Bear, Russian		<i>Lagomorpha</i>	
Brown	2	Domestic rabbit	6
(<i>Ursus arctos</i>)		(<i>Oryctolagus cuniculus</i>)	
Grizzly bear	2		
(<i>Ursus horribilis</i>)		<i>Primates</i>	
Black bear	7	White Handed Gibbon	1
(<i>Ursus americanus</i>)		(<i>Hylobates lar</i>)	
Cinnamon bear	5	Gray spider monkey	2
(<i>Ursus americanus cinnamonomum</i>)		(<i>Ateles geoffroyi</i>)	
Polar bear	1	White-throated capuchin	1
(<i>Thalarchos maritimus</i>)		(<i>Cebus capucinus</i>)	
Gray wolf	2	Margarita capuchin	1
(<i>Canis nubilus</i>)		(<i>Cebus margaritae</i>)	
Coyote	6	Mandrill	1
(<i>Canis latrans</i>)		(<i>Papio sphinx</i>)	
Red fox	3	Pig-tailed monkey	2
(<i>Vulpes fulva</i>)		(<i>Macaca nemestrina</i>)	
Raccoon	8	Rhesus monkey	15
(<i>Procyon lotor</i>)		(<i>Macaca rhesus</i>)	
American badger	4	Javan macaque	3
(<i>Taxidea taxus</i>)		(<i>Macaca mordax</i>)	
African civet cat	2	Sooty mangabey	1
(<i>Viverra civetta</i>)		(<i>Cercocebus fuliginosus</i>)	
Lion	3	Mona	1
(<i>Felis leo</i>)		(<i>Lasiopyga mona</i>)	
Bengal tiger	2	Patas monkey	1
(<i>Felis tigris</i>)		(<i>Erythrocebus patas</i>)	
Leopard	4	Blueball	1
(<i>Felis pardus</i>)		(<i>Callithrix moloch</i>)	
Leopard	1		
(Jaguar hybrid)		<i>Artiodactyla</i>	
Jaguar	1	Llama	3
(<i>Felis onca</i>)		(<i>Lama glama</i>)	
Mountain lion	1	Fallow deer	2
(<i>Felis hipolestes</i>)		(<i>Cervus dama</i>)	
Bay lynx	1	Sacred white fallow deer	8
(<i>Lynx ruffus</i>)		(<i>Dama vulgaris</i>)	
		Barasingha	2
<i>Rodentia</i>		(<i>Rucervus duvaucelii</i>)	
Woodchuck	4	Japanese deer	3
(<i>Marmota monax</i>)		(<i>Sika nippon</i>)	

Red European deer -----	5
(<i>Cervus elaphus</i>)	
American elk -----	3
(<i>Cervus canadensis</i>)	
Virginia deer -----	1
(<i>Odocoileus virginianus</i>)	
Tahr -----	3
(<i>Hermitragus jemlahicus</i>)	
Aoudad -----	1
(<i>Ammotragus lervia</i>)	
Domestic ass -----	1
(<i>Equus domesticus asinus</i>)	
Zebu -----	2
(<i>Bos indicus</i>)	
American bison -----	4
(<i>Bison bison</i>)	
<i>Proboscidea</i>	
Indian elephant -----	1
(<i>Elephas indicus</i>)	

Birds

<i>Ratitae</i>	
South African ostrich ----	1
(<i>Struthio australis</i>)	
Rhea -----	1
(<i>Rhea americana</i>)	
Emu -----	1
(<i>Dromiceius novaehollandiae</i>)	
<i>Ciconiiformes</i>	
American white pelican ---	1
(<i>Pelecanus erythrorhynchos</i>)	
Great blue heron -----	3
(<i>Ardea herodias</i>)	
Black-crowned night heron	15
(<i>Nycticorax nycticorax naervius</i>)	
<i>Anseriformes</i>	
Mallard duck -----	14
(<i>Anas platyrhynchos</i>)	
Black duck -----	10
(<i>Anas rubripes</i>)	
Pintail -----	2
(<i>Dafila acuta</i>)	
Wood duck -----	3
(<i>Aix sponsa</i>)	
Mandarin duck -----	3
(<i>Dendronessa galericulata</i>)	
Canada goose -----	5
(<i>Branta canadensis</i>)	

Egyptian goose -----	2
(<i>Chenalopex oegyptiaca</i>)	
African goose -----	4
(<i>Anser gambeli</i>)	
Gray Swedish duck -----	3
Black Muscovy duck -----	5
White Muscovy duck -----	4
Whistling swan -----	2
(<i>Olor columbianus</i>)	
<i>Falconiformes</i>	
Turkey vulture -----	2
(<i>Cathartes aura</i>)	
Golden eagle -----	3
(<i>Aquila chrysaetos</i>)	
Bald eagle -----	3
(<i>Haliaeetus leucocephalus</i>)	
Red-tailed hawk -----	3
(<i>Buteo borealis</i>)	
<i>Galliformes</i>	
Silver pheasant -----	4
(<i>Gennaesus nyctemerus</i>)	
Lady Amherst's pheasant	1
(<i>Chrysolophus amherstiae</i>)	
Golden pheasant -----	8
(<i>Chrysolophus pictus</i>)	
Reeves pheasant -----	4
(<i>Syrmatius reevesi</i>)	
Ring neck pheasant -----	4
(<i>Phasianus torquatus</i>)	
<i>Gruiformes</i>	
Sandhill crane -----	1
(<i>Grus mexicana</i>)	
Demoiselle crane -----	1
(<i>Anthropoides virgo</i>)	
Stork -----	1
(<i>Ciconia allea</i>)	
<i>Charadriiformes</i>	
Herring gull -----	5
(<i>Larus argentatus</i>)	
Australian crested pigeon	2
(<i>Ocyphaps lophotes</i>)	
Bronze-wing pigeon -----	2
(<i>Phaps chalcoptera</i>)	
Mourning dove -----	4
(<i>Zenaidura macroura</i>)	
Zebra dove -----	2
(<i>Geopelia striata</i>)	
Ringed turtle-dove -----	6
(<i>Streptopelia risoria</i>)	
Nicobur pigeon -----	2
(<i>Caloenus nicobarica</i>)	

Domestic pigeon -----	16	<i>Rhamphastiformes</i>	
Wonga Wonga pigeon ----	2	Toca toucan -----	2
(<i>Leucosarcia picata</i>)		(<i>Rhamphastus toca</i>)	
<i>Psittaciformes</i>		Reptiles	
Grass paroquet (Green) --	24	Alligator -----	15
(<i>Melopsittacus undulatus</i>)		(Alligator Mississipiensis)	
Grass paroquet (Yellow) --	4	Snakes -----	30
(<i>Melopsittacus undulatus</i>)		Bull snake	
Yellow-headed parrot ----	2	(<i>Pituophis sayi</i>)	
(<i>Amazona ochrocephala</i>)		Pine snake	
Ringneck paroquet -----	4	(<i>Pituophis melanoleucus</i>)	
(<i>Palaeornis torquatus</i>)		Green water snake	
Australian magpie -----	2	(<i>Tropidonatus cyclopium</i>)	
(<i>Gymnor hinatibicen</i>)		Common water snake	
Red-and-blue macaw -----	2	(<i>Tropidonatus fasciatus</i>)	
(<i>Ara chloroptera</i>)		Gopher or Indigo snake	
Blue-and-yellow macaw --	1	(<i>Spilotes corais</i>)	
(<i>Ara ararauna</i>)		Boa constrictor	
Sulphur-crested cockatoo --	3	(<i>Boa constrictor</i>)	
(<i>Cacatoes galerita</i>)		Florida black snake	
Leadbeater's cockatoo ---	1	(<i>Zamenis constrictor</i>)	
(<i>Cacatoes leadbeateri</i>)		Southern pigmy rattle snake	
Rosae cockatoo -----	4	(<i>Siotriesus miliarius</i>)	
(<i>Cacatoes roseicapilla</i>)		Cotton mouth moccasin	
<i>Coraciiformes</i>		(<i>Ancistrodon piscivorus</i>)	
Giant kingfisher -----	2	Highland moccasin or copperhead snake	
(<i>Dacelo gigas</i>)		(<i>Ancistrodon contortrix</i>)	
Screech owl -----	5	Banded or timber rattle snake	
(<i>Otus asio</i>)		(<i>Crotolus horridus</i>)	
Great horned owl -----	6	Florida king snake	
(<i>Bubo virginianus</i>)		(<i>Ophibolus getulus</i>)	
<i>Passeriformes</i>		Milk snake	
Carrion crow -----	2	(<i>Ophibolus doliatus</i>)	
(<i>Corvus frugivorus</i>)		Glass snake	
Catbird -----	1	(<i>Ophisaurus ventralis</i>)	
(<i>Dumetella carolinensis</i>)		Florida yellow chicken snake	
Black bird -----	5	(<i>Coluber obsoletus</i>)	
(<i>Sturnus vulgaris</i>)			
Zebra finch -----	12	The number and variety of fish	
(<i>Taeniopygia castanotis</i>)		differ considerably during different	
Strawberry finch -----	10	seasons of the year. The following	
(<i>Amandava amandava</i>)		varieties are on exhibit some time	
Canary -----	10	during the year. On this date more	
(<i>Serinus canarius</i>)		than two hundred specimen are on	
Red-crested cardinal ----	1	display:	
(<i>Paroaria cuculata</i>)		Small mouth black bass	
Blue jay -----	1	(<i>Micropterus dolomien</i>)	
(<i>Cyanocetta cristata</i>)		Large mouth black bass	
Robin -----	1	(<i>Micropterus salmoides</i>)	
(<i>Planesticus migratorius</i>)		Calico bass	
Robin Japanese -----	12	(<i>Pomoxis sparoides</i>)	
(<i>Planesticus Japonica</i>)		White bass	
Gray Java sparrow -----	4	(<i>Roccus chrysops</i>)	
White Java sparrow ----	4		

Rock bass
(*Ambloplites rupestris*)
Yellow perch
(*Perca flarescens*)
Common sunfish
(*Eupomotis gibbosus*)
Bluegill
(*Lepomis pallidus*)
Wall-eyed pike
(*Stizostedion vitreum*)
Muskallunge
(*Esox masquinongy*)
Great northern pike
(*Esox immaculatus*)
Pickerel
(*Esox lucius*)
Brook trout
(*Salvelinus fontinalis*)
Rainbow trout
(*Salmo irideus*)
Whitefish
(*Coregonus clupeiformes*)
Common chub
(*Semotilus atromaculatus*)
German carp
(*Cyprinus carpes*)
Common sucker
(*Moxostoma aureolum*)

Buffalo
(*Ictiobus cyprinella*)
Black bullhead
(*Ameiurus melas*)
Channel cat
(*Ictalurus punctatus*)
Lake sturgeon
(*Acipenser rubicundus*)
Dogfish
(*Haleocommorphi*)
Long nosed gar
(*Gingly modi*)
Tropical fish—ten varieties, four
of them live bearing
Goldfish—several varieties
54 Common
25 Comets
25 Nymphs
25 Chinese Telescopes
25 Japanese Faintails
75 European Pear Roach or
Rudd

Conchology

A collection of eight thousand shells—two hundred varieties carefully named.



BABY LEOPARDS—BORN IN THE ZOO
(*Felis pardus*)



LLAMA (*Lama glama*)

Length of Lake and Park Drives

	Miles	
Lake Mendota Drive		
University Drive -----	1	
Bay Road and Eagle Heights -----	2	
Eagle Heights to Merrill Springs -----	1.6	
Mendota Beach -----	.7	
Capital Avenue -----	.6	
Sumac Drive -----	1.3	
Total miles -----	7.2	
Hammersley Road -----		.9
Owen Parkway -----		1.5
Farwell Drive		
Lakewood Boulevard -----	1.5	
Maple Bluff and Woodward's Grove -----	2.8	
State Hospital Drive -----	1	
Woodward Farm Road -----	.6	
Total miles -----	5.9	
Tenney Park		
Thornton Avenue -----	1.	
Sherman Avenue -----	.2	
Marston Avenue -----	.5	
Total miles -----	1.7	
Lake Front Park		
Lake Drive -----	.5	
Total miles -----	.5	
Olbrich Purchase		
Atwood Avenue -----		1.3
Brittingham Park		
Brittingham Drive -----	.7	
Brittingham Boulevard -----	.8	
Total miles -----	1.5	
Henry Vilas Park		
Elm Court -----	.1	
Burr Oak Drive -----	.7	
Meadow Drive -----	.5	
Wingra Heights Drive -----	.4	
Fenway Drive -----	1	
Edgewood -----	.5	
Total miles -----	3.2	
West Washington Boulevard -----		1
Total miles -----		24.7

Present Park Areas and Water Frontage

Parks	Acres	Water Frontage
Brittingham Park	27	4,370 ft.
Burr Jones Field	1.5	
Burrows Park	12	550 ft.
East Washington Ave. Parkway	10	
Elmside and Lake Front Park	5.1	2,000 ft.
Henry Vilas Park	62.6	6,000 ft.
Highlands	11	
Kendall Park	1.5	
Monona Park (Assembly Grounds)	30	1,350 ft.
Olbrich purchase, including athletic field	25	3,610 ft.
Olive Jones Field	1.5	
Orton Park	3.6	
Owen Parkway	6	
South Madison Boulevard	5	4,800 ft.
Spring Harbor	1	270 ft.
Spaight Street Park	1.5	600 ft.
Tenney Park	44.2	3,800 ft.
Washington Oval	.9	
Wingra Monona Parkway	33	6,000 ft.
Yahara Parkway	16.9	7,200 ft.
Totals	299.3	40,550 ft.



