



LIBRARIES

UNIVERSITY OF WISCONSIN-MADISON

Quarterly : a communique for Wisconsin Union Members. Fall 1990

Madison, Wisconsin: Wisconsin Union, Fall 1990

<https://digital.library.wisc.edu/1711.dl/I5LHU5BY3ABKK87>

This material may be protected by copyright law (e.g., Title 17, US Code).

For information on re-use, see

<http://digital.library.wisc.edu/1711.dl/Copyright>

The libraries provide public access to a wide range of material, including online exhibits, digitized collections, archival finding aids, our catalog, online articles, and a growing range of materials in many media.

When possible, we provide rights information in catalog records, finding aids, and other metadata that accompanies collections or items. However, it is always the user's obligation to evaluate copyright and rights issues in light of their own use.

Fall 1990

Quarterly

A Communique for Wisconsin Union Members

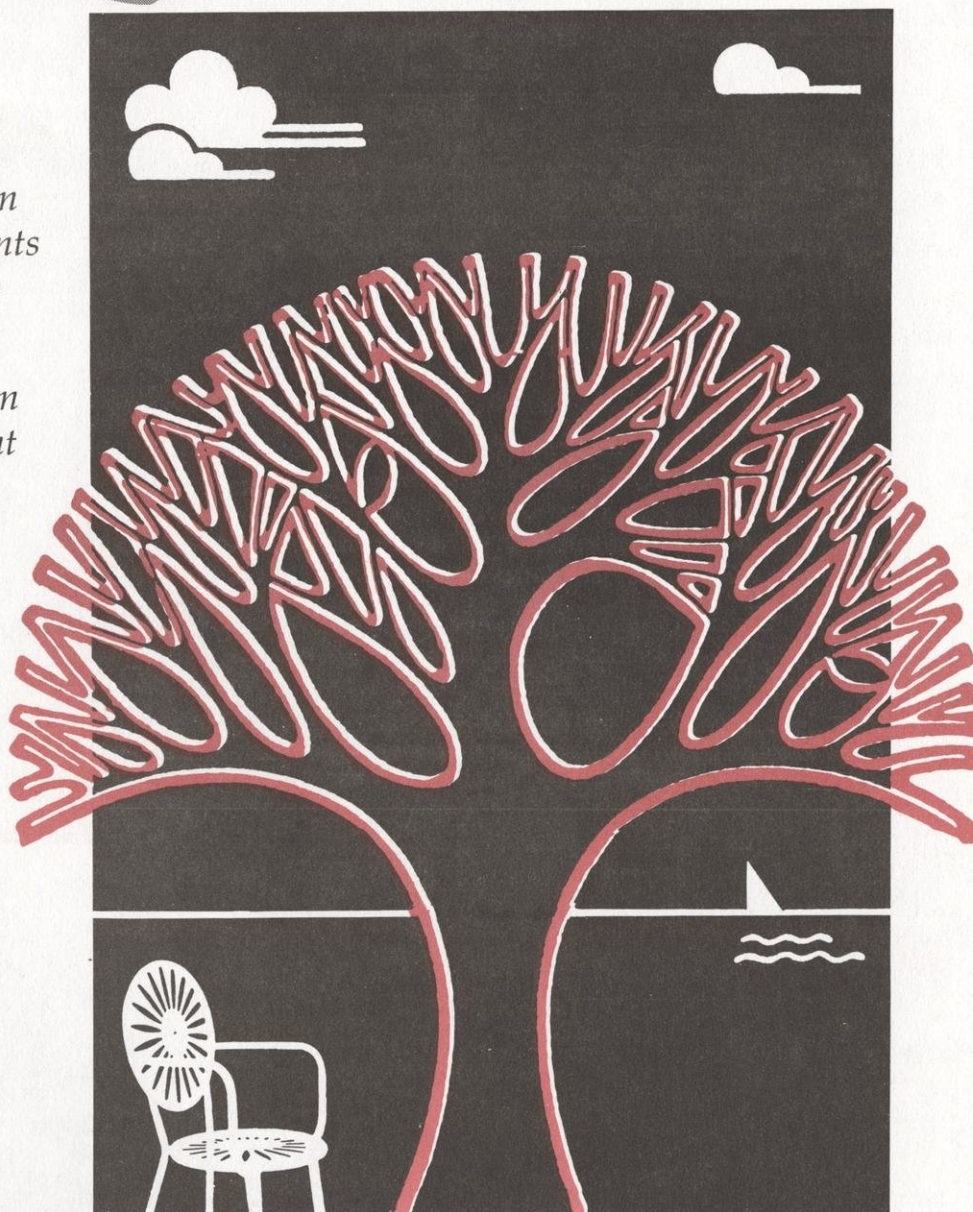
Featuring...

Wisconsin Union
Calendar of Events
including Badger Bash
information

Wisconsin Union
Theater Spotlight

Mini-Course
information

Convenient
Parking Guide



THE WISCONSIN UNION

◆ HANG GLIDING CLUB

Fall Kickoff Meeting

Sunday, September 9

7:00-8:30 pm

Council Room, Memorial Union

◆ OUTING CLUB

Fall Kickoff Meeting

Tuesday, September 11

7:00-9:00 pm

Great Hall, Memorial Union

◆ SAILING CLUB

Fall Kickoff Meeting

Thursday, September 6

8:00-11:00 pm

Tripp Commons, Memorial Union

◆ RIDING CLUB

Old Member Kickoff

Wednesday, August 29

7:00 pm

Hoofer Lounge, Memorial Union

All-day - Fall Huntseat

Schooling Show

Sunday, September 2

Pleasant View Stables, Middleton

New Member Kickoff

Wednesday, September 5

6:30 pm

Hoofer Lounge, Memorial Union

All-day Cross Country

Schooling Day

Saturday, September 15

Hoofer Riding Stable

◆ SKI CLUB

Fall Kickoff Meeting

Thursday, October 4

8:00-10:00 pm

Great Hall, Memorial Union

Ski Resale

Saturday and Sunday

December 1 & 2

Tripp Commons, Memorial Union

◆ SCUBA CLUB

Fall Kickoff

Monday, September 10

7:00 pm

Memorial Union (Check TITU)

PADI

Open Water Certification Course

Wednesday, September 12 through

Sunday, October 21

Wednesday Evening Lectures and

Sunday Pool Work

Fees:

\$170, plus Scuba Club membership

Registration: \$25 non-refundable

deposit.

Register at :

- Outdoor Rentals Office, Memorial Union
- Scuba Club Kickoff
- Scuba Club Social, Thur. nights, Memorial Union

Ecology Dive

Saturday, September 22

10:00 am

Memorial Union Lakefront

Underwater Pumpkin

Carving Dive

Saturday, October 27

8:00-10:00 pm

Memorial Union Boathouse

ALL HOOFER KICKOFF

Wednesday, September 5

8:00-11:00 pm

Great Hall, Memorial Union

For additional information call one of the following numbers:

- Wisconsin Hoofers 262-1630
- Hoofer Hotline 262-7445
- Boathouse/Outdoor Rentals 262-7351



Other Happenings...

Hoofers reach hearing impaired sailors

Responding to the call to make more services available to physically challenged people, the Hoofers Sailing Club is offering sailing lessons for the hearing impaired. This program differs from other Hoofers sailing lesson programs in one way only—lessons are given by instructors qualified in both sailing instruction and interpretation.

Club member and sailing instructor for the hearing impaired, Wendy Spagia-

Wiegman, notes that, "Although the program is brand new, so far, four people have taken advantage of it." She feels that the program is successful since those "otherwise unable, are now able to get involved with Hoofers and sailing."

For information on how to get involved, contact:

Wendy Spagia-Wiegman (608) 455-3300
~ or ~ Hoofers Office 262-1630.



Expansions improve Games Rooms

The Wisconsin Union is ever changing and we have these improvements to report.

The Alley, located in Memorial Union's lower level, is undergoing an expansion that will include additional seating space and allow room for a wider variety of recreational activities. Construction is almost complete. Look for the grand re-opening of The Alley this fall.

Union South Games Room is purchasing an automated bowling scoring system that will enable bowlers to have their score recorded automatically. The new system will also include television monitors and video graphics signifying a spare or a strike. According to Tim Gloeckler, Games Room Supervisor, "It should help make bowling at Union South more fun." The system should be installed by the start of the fall semester.



Travel Center - *your guide to adventure*

Escape to faraway lands using the Wisconsin Union Travel Center. Whether it's an actual trip or a dream vacation, the Travel Center has something for you.

The Travel Center offers these benefits to Union Members: Travel Escape Lunches (next page), discounted passport photos and passport information,

same day service for Eurail passes, American Youth Hostel memberships, Alco bus tickets, travel discount information, travel resource library, and much more. For additional information about the Travel Center, please call 262-6200 or stop by the Travel Center Office, fourth floor, Memorial Union.

MINI-COURSES

Fall is a season of variety. The fall Mini Course offerings reflect that variety—from the last great days of summer to the magic of the holiday season.

SUMMER...

is almost over but you may still get involved in some warm weather activities through Mini Courses. Enjoy the lakes with SAILING, SAILBOARDING, RECREATIONAL CANOEING, or take a YACHTING PLEASURE CRUISE. Take flight in HANG GLIDING, HOT AIR BALLOONING, or LET'S FLY. Harvest nature's wealth with WILD EDIBLE PLANTS, or stroll through the woods in KNOW YOUR TREES.


AUTUMN...

is the perfect time to start something new. Exercise (and have fun too!) in ROCK CLIMBING, ROLLERBLADING or dancing the JITTERBUG. Make new fall fashions in KNIT A SWEATER or PATCHWORK SKIRTS. Enhance your home decor with THE ART OF FLORAL ARRANGEMENT or MATTING & FRAMING.

WINTER...

is only a few months away. Get ready to enjoy the season with CROSS COUNTRY SKI PREPARATION or learn a new hobby by taking your choice of over 20 different CRAFTSHOP COURSES. Heat up the kitchen with CHINESE EGG ROLLS, SEAFOOD DISHES, or MEATLESS CUISINE. Get ready for holiday entertaining in GOURMET COFFEES or in WINE APPRECIATION with Bob Wollersheim.

Celebrate fall with Mini Courses. If you don't already have our fall catalog, call us at 262-3156 and we'll mail you one today. It's a season of variety at Mini Courses.



Events in the Union

BADGER BASH

Badger spirit is alive and well at Union South

Kick off the 1990 Badger football season with pre-game festivities at Union South. Join in the gameday zip-boom-bah with Bucky Badger, the UW Marching Band, the Wisconsin Cheerleaders, and brats and kraut... all at Union South Outdoor Plaza before each home game.

The festivities don't end at the sound of the gun. After the game, continue your Badger spirit with free entertainment at Union South.

- Dance to rock'n roll in Union South Plaza (rain location - Einstein's).
- Laugh along with Comedy Sportz in the Red Oak Grill.
- Tap your foot to the music of Doc DeHaven, September 8, 22, October 27, and November 3 in Carousel Cafe.
- Swing with the Lost Century Jazz Band September 15, October 6, and November 17 also in Carousel Cafe.

MUSIC

Sundays:

Bagels 'n Bach

Classical music during brunch, 10:00 am, Lakefront Cafeteria, Memorial Union

Tuesdays:

Mornings with Mozart

Classical music in the morning, 9:00 am, Lakefront Cafeteria, Memorial Union

Wednesdays:

Jazz Juggernaut

Afternoon Jazz, 4:30 pm, Rathskeller, Memorial Union

Open Mic

Student Talent Show, 8:00-10:30 pm, Rathskeller or Terrace, Memorial Union

Thursdays:

Spotlight

Live Music and Music Related Programs, 8:00-10:00 pm, Red Oak Grill, Union South

Thursday Night Music

Live Bands, 9:00 pm-12:30 am, Rathskeller or Terrace, Memorial Union

Fridays

TGIF I

Live popular music to start the weekend, 4:00-6:00 pm, Rathskeller or Terrace, Memorial Union

Jazz Hot Off the Grill

9 pm-Midnight, Red Oak Grill, Union South

TGIF II

Live weekend music continues, 9:00 pm-12:30 am, Rathskeller or Terrace, Memorial Union

Diversions

Alcohol-free dance club, 10:00 pm-2:00 am, Einstein's, Union South

Saturdays:

Saturday Night Music

9:00 pm-12:30 am, Rathskeller or Terrace, Memorial Union

Diversions

Alcohol-free dance club, 10:00 pm-2:00 am, Einstein's, Union South

MISC.

Open House

WUD Travel Committee and Alternative Spring Break programs, Thursday, September 6, 4:30-6:00 pm, Travel Center, Memorial Union

Lecture by Israel Shahak

Expert on Palestine, Tuesday, September 11, time to be announced, Memorial Union

Travel Escape Lunch: Brazil*

Thursday, September 13, Noon-1:00 pm, Memorial Union

Women's Film Series Kickoff

Wednesday, September 19, 1:00 pm-11:00 pm, Memorial Union

Lecture by Audre Lorde

Poet essayist, Monday, September 24, 7:30 pm, Memorial Union Theater

Lecture by Godfrey Binaisa

Former president of Uganda, Tuesday, September 25, 7:30 pm, Memorial Union Theater

Travel Escape Lunch: Guatemala*

Thursday, September 27, Noon-1:00 pm, Union South

Piano Recital by Franghis Alizadeh

Thursday, September 27, 8:00 pm, Memorial Union Theater

How To Plan for Study Abroad

Tuesday, October 2, 4:30-6:00 pm, Memorial Union

Tips for Travelers to Latin America

Thursday, October 11, Memorial Union

Lecture by Faye Wattleton

National Director, Planned Parenthood, Monday, October 29, 7:30 pm, Memorial Union Theater (tentative)

Lecture by Seymour Hersh

American foreign policy expert, Thursday, November 1, 7:30 pm, Memorial Union Theater

*Travel Escape lunches are informal slide presentations and discussions given by people who have spent time traveling in other countries. For information about these lunches, please call the Travel Center, 262-6200.



THE WISCONSIN

UNION
THEATER

1990-91 SEASON

Spotlight

September - December Events 1990

A special preview of the hottest tickets in town!



71st Annual Concert Series

*Emerson String Quartet**

*Orpheus Chamber Orchestra**

*Richard Goode, piano**

*Milwaukee Symphony Orchestra
w/ Shlomo Mintz, violin*

Beaux Arts Trio

Michel Debost, flute

*Malcolm Frager, piano
& Thomas Zehetmair, violin*

31st Annual Travel Adventure Film Series

*Himalayan Odyssey**

*Argentina - Land of Passion**

*In the Footsteps of Abraham**

Hong Kong and Macau

Rome and the Romans

Norway - Land of the Midnight Sun

Performance Series

*The Branford Marsalis
Jazz Quartet**

*The Parsons Dance Company**

*Africa Oyé!**

Kodo

New Dance Ensemble

** Tickets for First-Semester Individual Events Now on Sale!*



David Parsons Dance Company

TICKET INFORMATION

Series Subscriptions

Subscriptions to the Union Theater Concert Series (7 events), Travel Adventure Film Series (6 events) and Performance Series (3, 4 or 5 events) will remain available until all tickets designated for series sales have been purchased, or until the first event of the series.

Subscriber advantages:

- The best seats at the lowest cost
- Priority renewal for Union Members
- Reserved parking opportunity
- Ticket exchange for Travel Film subscribers
- Assured seats for sold out events

Individual Events

Tickets for first-semester (September - December 1990) individual events go on open sale at the Union Theater Box Office beginning Monday, August 27 at 11:30 a.m., or by mail order as soon as the Fall 1990 *Spotlight* is distributed. Tickets for second-semester (January - May 1991) individual events will be available for purchase beginning January 15, 1991.

With support from the Theater Program Endowment Fund, the Theater is able this year to offer an extraordinary **\$10 ticket price for UW-Madison students for Concert Series and Performance Series events.** That low price means faster sales, so act soon!

The Wisconsin Union Directorate reserves a number of tickets exclusively for student purchase.

The Sounds 71st Annual CONCERT SERIES First Semester Events

Saturday, October 13 - 8:00PM

Emerson String Quartet

Proud recipients of the 1990 Grammy Award for Best Classical Album of the Year, this outstanding quartet will perform Mozart's Adagio and Fugue in C minor, Bartók's Quartet No. 1, Op. 7, and Dvořák's Quartet in C Major, Op. 61.

Tickets: \$18.50 & \$17.50; UW-Madison students \$10.



Orpheus Chamber Orchestra

Saturday, October 27 - 8:00PM

Orpheus Chamber Orchestra

Come hear it yourself: "Orpheus, emotional and very musical, seems tied to a mysterious and invisible conductor, 'one for all, and all for one.' It is a marvelous experience." The program will include Handel's *Water Music*, Copeland's *Appalachian Spring*, Dvořák's *Serenade for Strings* and Bolcom's *Orpheus Serenade*.

Tickets \$18.50 & \$17.50; UW-Madison students \$10.

Friday, December 7 - 8:00PM

Richard Goode, piano

"In an age full of routinely brilliant pianists, Richard Goode stands out as a musician's musician." "He seems to be able to reach directly into the heart of the music without making us aware of his presence as 'interpreter.'" The program will include Beethoven's Sonata No. 13 in E flat; Schubert's Sonata in A minor; Schumann's *Davidsbündlertänze*.

Tickets: \$18.50 & \$17.50; UW-Madison students \$10.

Second Semester Concert Series Events:

- Milwaukee Symphony Orchestra w/Shlomo Mintz, violin • Beaux Arts Trio
- Michel Debost, flute • Malcolm Frager, piano & Thomas Zehetmair, violin

The Sights TRAVEL ADVENTURE FILM SERIES First Semester Events

Monday, Tuesday & Wednesday, October 1, 2 & 3 - 8:00PM

Himalayan Odyssey

- presented in person by Frank Klicar

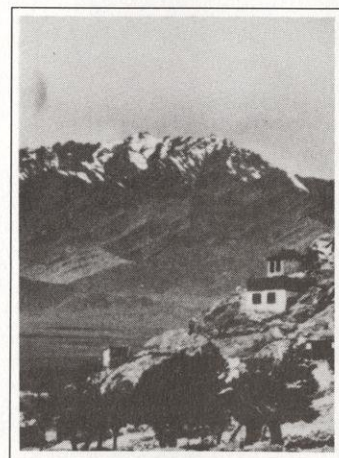
Mystery, beauty and adventure beneath the towering peaks of the earth's mightiest mountains—the Himalayas. Tickets \$5.00.

Monday, Tuesday & Wednesday, October 22, 23 & 24 - 8:00PM

Argentina - Land of Passion

- presented in person by Buddy Hatton

A cosmopolitan country, Argentina is home to 32 million people of Spanish, Italian, German and English descent. With terrain that includes sunny coastal beaches, snow-capped peaks of the Andes, a Swiss-like Lake District, and the fertile grasslands of the Pampas, this intriguing land provides something for everyone. Tickets \$5.00.



Himalayas

Monday, Tuesday & Wednesday, December 10, 11 & 12 - 8:00PM

In the Footsteps of Abraham

- presented in person by Jean-Luc Sterckx

4,000 years ago Abraham made a journey of 1500 miles across what is now modern Iraq, Syria, Turkey, Lebanon and Israel. Today you can follow his footsteps through the odyssey of the book of Genesis and the creation of Judaism, Christianity and Islam. Tickets \$5.00.

Second Semester Travel Adventure Film Series Events:

- Hong Kong and Macau • Rome and the Romans • Norway - Land of the Midnight Sun

Thursday, October 25 - 8:00PM

The Branford Marsalis Jazz Quartet

Branford Marsalis has emerged as one of the most innovative and eclectic stars of contemporary music. His talented quartet takes the best of mainstream jazz, transforms it into a powerful personal statement and makes it live again.

Tickets \$17.50; UW-Madison students \$10.

Friday, November 2 - 8:00PM

The Parsons Dance Company

David Parsons is a brilliant choreographer and a powerhouse dancer with the ability to move full-throttle with uncommon grace and nuance. His polished performers toss off his style with zestful flair and precision. It doesn't take long to see why they're "One of the hottest tickets in contemporary dance."

Tickets \$18.50 & 16.50; UW-Madison students \$10.

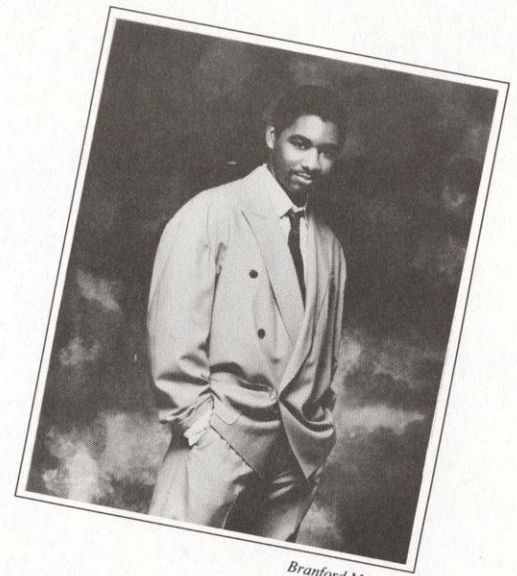
This project is supported by Arts Midwest members and friends in partnership with the National Endowment for the Arts.

Thursday, November 8 - 8:00PM

Africa Oyé!

"Viva Africa!" A celebratory cry from the heart and soul of Africa proclaims this colorful extravaganza of exuberant dancers, captivating musicians, breathtaking acrobats and spectacular costumes—an experience to set your heart pounding and your feet stamping.

Tickets: \$18.50 & \$16.50; UW students \$10.



Branford Marsalis

Second Semester Performance Series Events:

- Kodo • New Dance Ensemble

THE FINE PRINT

How To Order

Write, phone or stop by:

Wisconsin Union Theater Box Office,
Memorial Union, 800 Langdon Street
Madison, WI 53706-1495 • (608) 262-2201

The Union Theater Box Office is located just inside the Langdon/Park Street entrance to the Memorial Union on the UW-Madison campus. Regular hours are 11:30 a.m. to 5:30 p.m. on weekdays when classes are in session. Hours extend to 1/2 hour past curtain time on days of scheduled events. The Box Office closes for summer, winter and spring recess, during which time mail orders are accepted.

Mail Orders: Complete the mail order form on the back and return the entire page to the Wisconsin Union Theater Box Office with correct payment and a self-addressed, stamped business envelope. Orders may be mailed or dropped in the mail-slot of the Box Office window. There is a \$1.50 processing fee for all mail orders. Orders without return envelope and correct postage will be held at the Box Office as paid reservations. (Student orders see below.)

Phone Orders: Tickets to individual events may be charged by phone on Visa or MasterCard. Phone (608) 262-2201 during regular Box Office hours. All sales are final. There is a \$1.50 processing fee for all phone orders. Series subscriptions are not accepted by phone, but may be ordered by mail, or in person at the Box Office.

Over-The Counter Orders may be placed at the Box Office window. When Box Office is closed, orders may be dropped in the mail-slot, or at the theater office during regular business hours, 9:00 a.m. to 4:00 p.m. weekdays.

Student Discounts are available only to UW-Madison students enrolled for the fall of 1990. Two subscriptions or tickets allowed per ID. Student tickets will not be mailed. They must be picked up in person at the Box Office and a valid UW-Madison ID presented.

Payroll Deduction Plan is available to 1990-91 UW-Madison Faculty, Academic and Classified Staff for season subscriptions only (individual event ticket purchases do not qualify for payroll deduction.) The total cost of your subscriptions will be deducted from your paycheck in three monthly installments. Phone 262-2201 for information.

Theater Policy

All sales for Union Theater sponsored events are final. Refunds will be given only when an event is canceled and not rescheduled. The Wisconsin Union Directorate Theater Arts Committee reserves the right to substitute comparable attractions or to change the dates of programs if compelled to do so by conditions beyond its control. No refunds will be made under such circumstances.

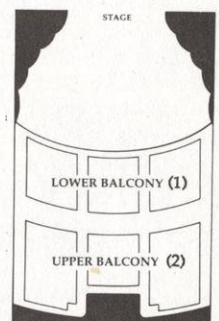
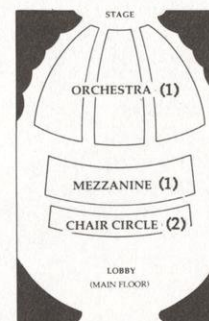
If you are unable to attend a performance, the donation of your ticket(s) to the Union Theater would be appreciated to enable resale. This is particularly appreciated for sold out events, when vacant seats could be filled by waiting patrons. Your contribution will be acknowledged for tax deduction purposes.

Services for those with a disability: Because the Main Box Office is not accessible by wheelchair, patrons in wheelchairs are encouraged to order by mail or phone. Please notify the Box Office at the time you purchase tickets if special assistance or seating arrangements are required due to a disability. The main floor of the Union Theater is accessible by wheelchair—the balcony is not. Wheelchair locations are available for patrons unable to transfer into regular auditorium seats, but must be reserved in advance; please indicate if you require such a location. An easy-access restroom is available in the outer lobby of the main floor for the convenience of patrons in wheelchairs or unable to climb stairs. Large print programs may be requested in advance by calling the Theater office at 262-2202.

Gift Certificates are available through the Box Office or Theater Office.

Group Seating: If you would like to sit with friends, please submit your orders together and include a self-addressed stamped business envelope for each address to which the tickets are to be mailed. Please state clearly the number of subscriptions to be sent to each address. If several subscriptions are to be mailed to a single address, please provide adequate postage: 45¢ for three or four books of tickets, or 65¢ for five or six books of tickets. The Box Office would appreciate it if you would also include the names and addresses of all subscribers in your party.

Reserved seat tickets in the Wisconsin Union Theater are divided into two prices corresponding to seat location: **top price (1)** seating in the orchestra, the mezzanine and the lower balcony; **lower price (2)** in the chair circle and upper balcony:



For further information phone
608/262-2201 or 262-2202



THE WISCONSIN UNION THEATER

1990-91 Series Subscription and First Semester Individual Events

Ticket Order Form

(Tickets for second semester individual events go on sale Tuesday, January 15, 1991)

Circle desired location and write in number of tickets ordering in the appropriate column below:

Name _____

Address _____

City _____

State _____ Zip _____

() Day Phone _____

() Evening Phone _____

Check all that apply:

☐ UW Student ☐ Union Member ☐ UW Faculty

☐ UW Staff ☐ New Subscriber ☐ Other

METHOD OF PAYMENT:

☐ Check enclosed payable to:
Wisconsin Union Theater

☐ Charge my: ☐ MasterCard ☐ Visa

Card # _____

Exp. date _____

Signature _____

Date _____

Please enclose a self-addressed, stamped business envelope with your completed order and mail with correct payment to:

Wisconsin Union Theater Box Office
Memorial Union, 800 Langdon Street
Madison, WI 53706-1495

Orders without a self-addressed, stamped envelope will be held at the Box Office as paid reservations. If you would like to sit with your friends, submit your orders together and include a return envelope for each address to which tickets are to be mailed. State clearly how many subscriptions are to go to each address. For multiple orders please provide 45¢ postage for three or four books of tickets, or 65¢ for five or six books of tickets.

Please return this entire page

SEASON SUBSCRIPTIONS	General Public orchestra mezzanine lower balcony	General Public chair circle upper balcony	UW Student orchestra mezzanine lower balcony	UW Student chair circle upper balcony	TOTAL PRICE
CONCERT SERIES (7 events)	# _____ @ \$90.00	# _____ @ \$80.00	# _____ @ \$70.00	# _____ @ \$70.00	= \$ _____
TRAVEL ADVENTURE FILM SERIES (6 events)	# _____ @ \$19.50	# _____ @ \$17.50	# _____ @ \$19.50	# _____ @ \$17.50	= \$ _____
Please indicate 1st, 2nd & 3rd choice: Mon _____ Tues _____ Wed* _____					
PERFORMANCE SERIES Check events (Must order 3 or more) <input type="checkbox"/> Branford Marsalis <input type="checkbox"/> Parsons Dance Company <input type="checkbox"/> Africa Oyé! <input type="checkbox"/> Kodo <input type="checkbox"/> New Dance Ensemble					
3-EVENT SUBSCRIPTION:	# _____ @ 45.00	# _____ @ \$45.00	# _____ @ \$30.00	# _____ @ \$30.00	= \$ _____
4-EVENT SUBSCRIPTION:	# _____ @ \$60.00	# _____ @ \$60.00	# _____ @ \$40.00	# _____ @ \$40.00	= \$ _____
5-EVENT SUBSCRIPTION:	# _____ @ \$75.00	# _____ @ \$75.00	# _____ @ \$50.00	# _____ @ \$50.00	= \$ _____

INDIVIDUAL EVENTS

EMERSON STRING QUARTET 10/13/90	# _____ @ \$18.50	# _____ @ \$17.50	# _____ @ \$10.00	# _____ @ \$10.00	= \$ _____
ORPHEUS CHAMBER ORCHESTRA 10/27/90	# _____ @ \$18.50	# _____ @ \$17.50	# _____ @ \$10.00	# _____ @ \$10.00	= \$ _____
RICHARD GOODE 12/7/90	# _____ @ \$18.50	# _____ @ \$17.50	# _____ @ \$10.00	# _____ @ \$10.00	= \$ _____
BRANFORD MARSALIS 10/25/90	# _____ @ \$17.50	# _____ @ \$17.50	# _____ @ \$10.00	# _____ @ \$10.00	= \$ _____
PARSONS DANCE COMPANY 11/2/90	# _____ @ \$18.50	# _____ @ \$16.50	# _____ @ \$10.00	# _____ @ \$10.00	= \$ _____
AFRICA OYÉ! 11/8/90	# _____ @ \$18.50	# _____ @ \$16.50	# _____ @ \$10.00	# _____ @ \$10.00	= \$ _____

TRAVEL ADVENTURE FILMS: Please indicate 1st, 2nd & 3rd choice of day (Mon, Tues, or Wed)

HIMALAYAN ODYSSEY Mon _____ Tues _____ Wed* _____	# _____ @ \$5.00	# _____ @ \$5.00	# _____ @ \$5.00	# _____ @ \$5.00	= \$ _____
ARGENTINA Mon _____ Tues _____ Wed* _____	# _____ @ \$5.00	# _____ @ \$5.00	# _____ @ \$5.00	# _____ @ \$5.00	= \$ _____
FOOTSTEPS OF ABRAHAM Mon _____ Tues _____ Wed* _____	# _____ @ \$5.00	# _____ @ \$5.00	# _____ @ \$5.00	# _____ @ \$5.00	= \$ _____

*Best available seating is on Wednesday

Total cost of tickets ordered

Required ticket order processing fee

Optional contribution to Wisconsin Union Theater Program Endowment Fund

TOTAL AMOUNT DUE

The Box Office will make every effort to fill your order as requested. If seating is not available in location/price requested may we substitute the next best? ☐ yes ☐ no



THE WISCONSIN UNION THEATER

Memorial Union, 800 Langdon St., Madison, WI 53706-1495

Non-Profit Org
U.S. Postage

PAID

Madison, Wisconsin
Permit No. 84.

MOVIES

Union Film Series

Fridays at 5:00, 7:00 & 9:00 pm
Saturdays / Sundays at 7:00 & 9:00 pm
Fredric March Play Circle,
Memorial Union, Admission-\$2.50

September

7-9 House Party
14-16 Driving Miss Daisy
21-23 Without You I'm Nothing*
28-30 The Gods Must Be Crazy II

October

5-7 Too Beautiful For You*
12-14 Labyrinth of Passion*
19-21 Sweetie*

*No 5:00 pm Friday show.

Lakeside Cinema

Mondays at 8:00 pm, Memorial
Union, Admission - FREE

September

10 Annie Hall
17 Play it Again, Sam
24 Love and Death

October

1 Everything You Always Wanted to
Know About Sex (But Were Afraid To Ask)
8 Hollywood Shuffle
15 Shaft
22 I'm Gonna Get You, Sucka
29 Little Shop of Horrors

November

5 Teenage Caveman
12 The Masque of the Red Death
19 And Now For Something
Completely Different
26 Monty Python's Meaning of Life

December

3 Live at the Hollywood Bowl
10 Holiday Film Jamboree

Starlight Cinema

Thursdays at 8:00 pm, Rm. 109
Union South, Admission - FREE

September

6 Repo Man
13 Brazil
20 The Adventures of Buckaroo Banzai:
Across the 8th Dimension
27 Bliss

October

4 Stalker
11 The Gods Must be Crazy
18 Diva
25 Fantastic Planet

November

1 Forbidden Planet
8 Real Life
15 Soldier of Orange
29 Housekeeping
6 After Hours

December

13 Mountains of the Moon



ART GALLERY EXHIBITS:

July 20-Sept. 9

Theater Gallery
WORKS FROM THE UNION
COLLECTION

Aug. 17-Sept. 15

Main Gallery
GILL ALEXANDER
Realistic drawings, watercolors, and acrylic
paintings.

Class of 1925 Gallery
M. L. KRASE
Paper media.

Sept. 21-Oct. 21

Main Gallery
MARK BARONE
Oil paintings.

Class of 1925 Gallery
NAOMI COHAN
Watercolors.

Theater Gallery
DAVID SPITZER
Photographs of legendary jazz artists.

Nov. 3-Dec. 2

Main, Theater, and Class of 1925
Galleries
GRADUATE STUDENT SHOW
63rd annual competitive art exhibition in all
media, open to all UW-Madison graduate
students.

Dec. 7-Dec. 15

Main and Class of 1925 Galleries
MASTER OF FINE ARTS SHOW

Dec. 20-Jan. 19

Main, Theater, and Class of 1925
Galleries
THE TIDE TURNS - WOMEN'S
CAUCUS FOR THE ARTS
Two and three dimensional works.

Gallery hours are
10:00 am-6:00 pm daily.

All exhibitions are planned and in-
stalled by student volunteers of the
Wisconsin Union Directorate Art
Committee. For further information
concerning gallery exhibitions and
other art programs, please call
Margaret Tennessen at 262-5969.

In the News

FANNIE TAYLOR RECEIVES STATE AWARD

The Wisconsin Union is proud with the announcement that one of its own has received a Book Award of Merit from the State Historical Society of Wisconsin. The book, *The Wisconsin Union Theater - Fifty Golden Years*, chronicles five decades of the colorful history of the Union Theater.

Fan Taylor, Union Theater Director (1946-1966), authored the book on the historical Union Theater. She spent five years researching theater records, newspaper clippings and photographs to reconstruct a half-century of Theater history, philosophy and programming. The book features hundreds of vintage photos, poignant quotes and colorful remembrances, giving the reader an up-close view of the Theater's many celebrity performers and its show-stopping design.

The beautifully designed coffee table book takes the reader on a visual and narrative tour of a landmark's history, and offers an insight into the cultural contributions made by a theater once hailed by novelist Sinclair Lewis as "the most beautiful theater in the world."

Professor Emeritus Taylor received this Award of Merit from State Historical Society Director, H. Nicholas Muller III during the Society's annual meeting in Ashland, June 22.



The Wisconsin Union Theater-Fifty Golden Years is available for \$11.95 at the Memorial Union Theater Box Office, 262-2201. The Box Office hours are 11:30 am-5:30 pm, Monday through Friday and one-half hour past showtime. Or write, Memorial Union Theater Box Office, 800 Langdon St., Madison, WI 53706



Special Events

TUDOR DINNER CONCERTS

Relish the majesty of the traditional Tudor Dinner Concerts. Feast in a banquet of exquisitely prepared cuisine and enjoy the eloquent sounds of the Madison Philharmonic Chorus under the direction of Professor Samuel Jones. Make this a holiday custom for you and those you love.

Reserve these dates on your holiday calendar and watch the mail for future information about the Tudor Dinner Concerts. The 1990 series dates are November 28 - December 2, and December 4 and 5, at 6:15 p.m. in Great Hall, Memorial Union.

Notification and specific information about the Tudor Dinners will be mailed to area resident members (living within a 40 mile radius of Madison) who are not students.

Non-resident members and UW-Madison students may receive this mailing, by contacting: Membership Office, Room 410 Memorial Union, 800 Langdon Street, Madison, WI 53706, phone 262-2263 and request this information.

Tickets go on sale October 29, 1990; orders received before then will not be processed. Ticket orders, including walk-ins, must be accompanied by a stamped, self-addressed envelope.

Due to the popularity of the Tudor Dinners, everyone cannot be accommodated. Members whose ticket requests could not be honored last year will be put on a priority list to receive an early mailing this year.

NEW YEAR'S EVE EXTRAVAGANZA

Ring in the New Year with a Wisconsin Union affair of eating, drinking, and dancing. The festivities begin at 8:30 pm, in Great Hall, Memorial Union, December 31, 1990.

The party includes hors d'oeuvres, a dessert buffet, party favors, free champagne at midnight, and the music of American Jazz Express. Free parking is also available to all who attend. Create new memories by spending New Year's Eve with us at the Wisconsin Union.

All members will have preference in ticket sales. Watch for a mailing later this fall. For additional information, contact Bill Mann, Program Coordinator, 262-0887.

CULTUREBEATS

In celebration of the music of diverse cultures, the Wisconsin Union and the Dean of Student's Alcohol-Free Programming and Allocation Committee announces a new and exciting dance series.

Tuesday, August 28, 10:00 pm-12 am
Multicultural Orientation DJ Dance
Great Hall, Memorial Union

Thursday, August 30, 9:00 pm-12 am
International Student Welcome DJ Dance, Einstein's, Union South

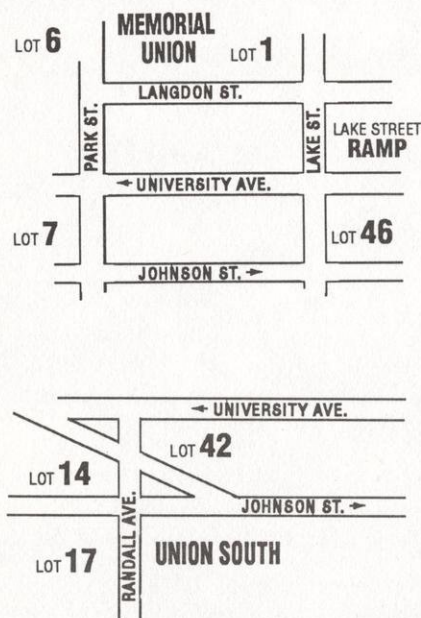
Friday, September 21, 9:00 pm-1:00 am
Culturebeats, Live Band
Great Hall, Memorial Union

Saturday, October 27, 9:00 pm-1:00 am
Homecoming Dance - Live Band
Great Hall, Memorial Union

Saturday, Nov. 10, 9:00 pm-1:00 am
Culturebeats-Live Band
Union South



THE EVENTS LOOK GREAT, BUT WHERE DO I PARK?



Parking near Memorial Union and Union South is easy. Here's a guide to help you locate convenient parking next time you use one of our buildings.

Parking near Memorial Union:

Lot 1 has 78 stalls of metered parking available daily in the lot adjacent to the Memorial Union and the Armory (Red Gym)

Lot 6 (Helen C. White Library Parking Garage) has 163 metered parking spaces available. The lot is located west of Memorial Union, with the entrance on Park Street. The upper level is available to visitors daily, and the lower level is available to visitors evenings and weekends only.

Lake Street Ramp is located less than three blocks southeast of Memorial Union between State Street and University Avenue; it provides 1200 spaces of paid visitor parking. Enter on Lake Street or Francis Street.

Lot 46 is located between University Avenue and Johnson Street, adjacent to Lake Street. More than 300 visitor spaces are available daily and nearly 700 visitor spaces are available nights and weekends. A shuttle service is provided by the UW-Madison Parking Office between lot 46 and the Wisconsin Union Theater on nights of Concert Series, Performance Series and Travel Adventure presentations.

Lot 7 is located at the intersection of Park and Johnson Streets (entrance on Brooks Street). This lot is slated for demolition to make way for the new School of Business building. Until then, visitors use the lot evenings and on weekends.

Parking near Union South:

Lot 14 is a metered lot located west of Union South near the College of Engineering. Visitor parking is available daily.

Lot 42 is an open parking lot located just north of Union South between Johnson Street and University Avenue. It is available to visitors after 5:30 pm Monday through Saturday and all day Sunday.

Lot 17 is located less than 2 blocks west of Union South. Visitor parking is available evenings and weekends.

Football Saturday/Badger Bash Parking

Finding a place to park during home Badger football games can be difficult. However, permits to park in University lots near Camp Randall and Union South are available to purchase. These permits, sold on a first come, first served basis are available at the entrance of each lot ON GAME DAYS ONLY.

WISCONSIN UNION DIRECTORY

Campus Video	263-1115
Catering	MU 262-7819
	US 263-2561
Craftshop	262-1282
Games Desk	MU 262-1330
	US 263-2514
Hoofers	262-1630
Hotel	MU 262-1583
	US 263-2600

Information Desk	MU 262-1331
	262-2511
	US 263-2600
Membership	262-2263
Mini Courses	262-3156
	262-5771
Outdoor Rentals	262-7351
Room Reservations	MU 262-2511
	US 263-2543
Theater Box Office	262-2201
Travel Center	262-6200
Union Retail Store:	
The Corner Store	262-3960

Editor: Susan Jebson
Assistant Editor: Sandra Gau
Designer: William Hamilton

The "Quarterly" is mailed to Wisconsin Union members informing them of Union activities and events. Story ideas, comments and suggestions are welcome. Please forward information to: Membership Office, 800 Langdon St., Madison, WI 53706.

T-SHIRTS FOR SALE

Wisconsin Union Theater 50th Anniversary Commemorative T-Shirts printed in three fabulous colors on a 100% cotton Beefy-T, are on sale for only \$6. They are available at the Memorial Union Service Center.

T-shirts depicting Memorial Union terrace chairs, also on a 100% cotton Beefy-T, are on sale at the Memorial Union Service Center. The 1989 version is still available for \$6 and the 1990 T-shirt sells for \$7.



THE WISCONSIN UNION

University of Wisconsin - Madison
Memorial Union, 800 Langdon St.
Madison, WI 53706-1495

Non-Profit Org
U.S. Postage

PAID

Madison, Wisconsin
Permit No. 84.

Address Correction Requested