



The daily cardinal. Vol. LXXI, No. 40

November 4, 1960

[Madison, Wisconsin]: [s.n.], November 4, 1960

<https://digital.library.wisc.edu/1711.dl/YSX6ORO7MD6K38E>

<http://rightsstatements.org/vocab/InC/1.0/>

The libraries provide public access to a wide range of material, including online exhibits, digitized collections, archival finding aids, our catalog, online articles, and a growing range of materials in many media.

When possible, we provide rights information in catalog records, finding aids, and other metadata that accompanies collections or items. However, it is always the user's obligation to evaluate copyright and rights issues in light of their own use.

The Daily Cardinal

Complete Campus Coverage

VOL. LXXI, No. 40

University of Wisconsin, Madison, Wisconsin, Friday, November 4, 1960

5 CENTS A COPY

Homecoming Festivities Begin

Weekend Gaiety Marked By Show, Displays, Dances

By LYNNE ABRAHAM

What has been long-awaited, elaborately planned for, and constantly talked about has finally arrived—Homecoming weekend.

Festivities get under way this afternoon with a pep rally on the Union terrace at 4:45. Master of Ceremonies Ed Garvey, backed by a pep band, will introduce the Homecoming king, Peter Zouvas and his queen, Anne Valessares, and the 1960 Badger grid team and their coach, Milt Bruhn.

THE "YELL LIKE Hell!" contest, with 23 entries competing for a trophy will follow the rally on the Union steps.

Displays in front of dorms, independent houses, and fraternity and sorority houses will add color and excitement to the occasion. Adhering to this year's Homecoming theme, "It's Bucky in '60," 48 units will attempt to be best in show.

ORIGINALITY, ingenious mechanics, and a decorative flair can be seen in the projects—from the Martian creature, carrying a ray gun, who proclaims "I Volts for Bucky" in front of the Theta Chi house, to the Chi Omega display which assures a Northwestern Wildcat in every pot.

Taking full advantage of the 1:30 night, many students will flock to the homecoming show at the field house, which features Count Basie and his orchestra, singer Joe Williams, jazz vocal trio Lambert, Hendricks and Ross, vocalist Ernestine Anderson and comedian Don Adams.

An added attraction will be the announcement of the winners of

(continued on page 8)



TREE DECORATION—After decorating their Homecoming display with appropriate supplies, these men of Gregory house (Tripp) stand proudly before their creation, claiming, "We'll Wipe 'Em." All the houses in Tripp hall have combined their efforts in this single decoration, which is among the many displays to be judged today for prizes. —photo by Finn and Boecher

'U' Fraternities Surpassing Gophers in '60 Clause Fight

Chapters of Alpha Tau Omega and Sigma Nu fraternities at the University of Minnesota apparently will not be able to satisfy their school's counterpart to our university's 1960 clause, but the corresponding chapters here are continuing optimistically to fulfill the requirements of the clause by Dec. 1.

A story this week in the **Minnesota Daily**, the student newspaper, stated that spokesmen for the two Minnesota fraternities admitted to the school's Senate Com-

mittee on Student Affairs that their organizations were not ready to comply with the university's rule requiring the abolishment of clauses in their constitutions which limited fraternity membership to either white males or Christians.

Both fraternities could probably have satisfied the university ruling by obtaining special waivers of these national clauses as provided through amendments to their national constitutions this summer.

The spokesman for Sigma Nu said that chapter does not intend to apply for the waiver. "With a waiver, there would be no change in membership," he said. "It would be redundant to have such a waiver," he added, claiming that the local chapter was autonomous in regard to the national organization and no longer was restricted by the national "white only" membership clause.

The committee, however, unanimously denied Sigma Nu's request to be given a "clean slate" concerning the university rule.

The ATO president at Minnesota said that although his chapter has applied for the waiver, his group is "not ready to admit Negroes."

The ATO national constitution contains both "white only" and "Christian only" provisions regarding membership. The Minnesota chapter has applied for a waiver just on the "white only" provision, however. The president, denying that his fraternity excludes non-Christians, said, "They exclude themselves" by not accepting the Christian principles, ideals, and faith on which the organization is founded.

A professor who is a member of the committee then announced that he would move at the next meeting to withdraw recognition of Alpha Tau Omega.

At Wisconsin spokesman for the local chapters of these two fraternities said that they are proceeding to receive the waivers, confident that will get them and that they will satisfy the university's 1960 clause, which requires basically the same thing as the Minnesota ruling.

ATO has sent a request to their national organization for the spe-

(continued on page 8)

Parties Endorse More 'Politicos'

Badger and Campus parties neared completion of their slates of candidates for campus elections at meetings held yesterday.

The Badgers endorsed Paul Geisler and Naomi Shapiro for District I Student Senators and Denny O'Connell for sophomore man on the **Daily Cardinal** Board of Control. For the District IV senate seats the Badgers backed Ira Kornbluth, Bill Haberman, and Gretchen Becker. Dietrich Kessler and Amy Herman received the party's nod for the District III seats.

Campus picked Chuck Mazurski for District I, Cathy Stettler and Don Kind for District II, and Mike Comer and Jerry Redfield in District IV. Senator Lana Daniels was renominated for her seat in District III, while Tom Blanchard will run for the second senatorship in that district.

Senator Larry Van Cura (C-

Dist. III) announced his resignation at the Campus meeting. Another candidate will be nominated before the Friday registration deadline, however, according to party chairman John Jacobson.

Gale Pfund will run on the Campus ticket for sophomore on the **Badger** Board of Control. This position was left vacant by the resignation of Dave Schuster, who was elected last spring. **Cardinal** Board hopefuls are Amy Wastila for sophomore woman and Karen Magee for junior at large.

Union Approves \$400 for Trial Night Busline

Approval of a \$400 bond to finance a trial bus service between the Union and the dorm area was unanimously approved last night at the Union directorate meeting. A rundown of last year's Union activities and the approval of a summer session booklet were also discussed.

"The November 14 to January 21 period is an ideal one for the bus service because it includes the times when the Union and the library are the busiest," said Dan Webster, Union president. He will meet with representatives of WSA and LHA to plan the publicity and promotion for the service.

ATTENDANCE of 216,704 at last year's lectures, concerts, and theater programs in the Union was almost equal to the attendance at the five home football games last year, Union Director Porter Butts told the directorate. "This is indicative that students are interested in cultural events as well as football games," said Butts.

Total attendance at all organized group events was 566,360 for the June 1, 1959 to May 31, 1960

(continued on page 8)

World News Briefs

COOL—Cloudy and cooler today. Saturday cloudy and continued cool. High today upper 40; low tonight 40.

MEANY CHARGES WITHHELD FIGURES

Washington—AFL-CIO president George Meany has charged the administration with holding back October unemployment figures until after election day because they show a rise in the number of jobless. A labor department spokesman says the report will be issued after the election because this is part of "the normal course of operations." But Meany says the administration had arranged for publication of October employment statistics before the 1954, '56, and '58 elections "when it had good news."

ELECTION ODDS OUT

Las Vegas—Odds on the presidential election were taken off tote boards in Nevada today because of an obscure law. Although gambling is legal in Nevada, State Attorney General Roger Foley notified gamblers he would enforce a 1919 statute making it illegal to list odds on elections, lest they influence the outcome. When the prices came down, Senator Kennedy was the favorite (at 9-to-5.)

CHINESE 'INVADE' CUBA

Havana—Sources in Havana say Communist Chinese pilots are arriving to train Cuban fliers in handling Soviet mig fighter planes. They say the planes are being assembled by Czechoslovakian technicians at a base in Western Cuba. The Red Chinese pilots got their own combat experience in Migs during the Korean War.

U.S. PROFS. WIN NOBEL PRIZE

Stockholm—Two University of California scientists have won the 1960 Nobel Prizes in chemistry and physics. Professor Willard Libby received the chemistry award for his "atomic time clock" which determines the age of old items, and the physics prize went to Professor Donald Glaser for his "bubble chamber" used to photograph atom smashing.

IKE ON TV TONIGHT

Washington—President Eisenhower will campaign for the Nixon-Lodge ticket in Cleveland and Pittsburgh today. A speech by the President tonight will be carried on nationwide TV.



GETTING READY—Students all over campus spent most of last night and early this morning putting up their house displays for Homecoming. Official festivities for the big weekend begin today with display judging and end Saturday night with Homecoming Balls in the Union and in Van Hise Commons.

—Cardinal photo by Sally Levin

"... that Continual and Fearless Sifting and Winnowing by which alone the truth may be found ..."

The Daily Cardinal

COMMENT

A PAGE OF OPINION

The Mock Election ...

Odds and Ends

The Big Ten mock election this week set a precedent in reporting procedures for the **Daily Cardinal**, and in the process made the election much more meaningful to readers. Instead of knowing just the results here the next morning, students at the university could read about and compare them with every Big Ten school holding a similar election.

THE BIG TEN schools exchanged their results by means of a conference telephone call, in which all the editors got on the line at the same time and reported their results to those listening. The co-ordinated election on the various campuses and the conference call afterwards was arranged by the University of Illinois' **Daily Illini** and the Illinois Student Senate. These two groups, and especially Ray Cohen, mock election chairman at Illinois, deserve many thanks.

Many interesting, and perhaps significant sidelights were gleaned during the conference call. For instance, two schools—Michigan State university and Purdue university—did not hold their scheduled mock elections because of apparent student apathy at both schools and restrictions imposed by the administration at Purdue. At MSU the Young Republicans and the Young Democrats originally planned to co-operate in sponsoring the election, much as they did at Wisconsin in working with the Union Forum committee. But when the time came, not enough of the young politicians turned out to man the ballot boxes, so no vote could be held.

AT PURDUE the student government voted to have a combined national and state mock election, as we did here, but the school's administration then ruled out having the state election, for reasons which we on this campus will never understand. (Any results would stray from bi-partisanship, which a state-supported institution has to maintain, they must have reasoned.) So plans for a presidential vote alone were made, only to have the administration rule then that no polling places could be set up on campus. (This would encourage on-campus campaigning, officials stated.) Still wanting a mock vote, the campus Young Republicans and Young Democrats offered to take ballots around to living units so students could still vote, but apathy set in, and when the time came, not enough of the two groups' members showed up to do the job.

At the University of Minnesota, the student newspaper long ago decided that they didn't want to sponsor any mock election

because they believed the student body would be too apathetic to make it successful. So there was no official mock vote on that campus either.

ALTHOUGH THE University of Illinois went through with their vote as planned, the Young Democrats on the campus refused to co-operate in the plans because write-in votes were allowed, thus giving Adlai Stevenson's supporters a chance to lessen the number of vote for Kennedy. The Illinois voters did give Stevenson 64 votes, but it surely seems like a small reason for the Young Democrats to withdraw their support.

A very interesting observation at several campuses was that the mock election turnout far outdid any previous turnouts for elections on campus, including those in which student officers were chosen. Illinois and Northwestern were outstanding examples of this, as well as our own university. Our previous high vote for a mock presidential election was 4,789 (excluding write-ins) in 1956; this year we had 7,072 (including write-ins). The record for an all-campus election was 3,965 in the spring of 1959. (Last April's vote of 3,949 nearly equaled that record, however).

A NUMBER OF ballots here on which the students voted in an unexpected way were commented on by election officials. Although the extent of the occurrences could not be definitely stated, there were many Kennedy-Kuehn ballots, suggesting that some staunch Republicans remained loyal to Republican Kuehn but switched to Kennedy because of—perhaps—even stronger religious loyalties. Officials also remarked that out-of-state students, using ballots of different color than in-state students, favored Kennedy over Nixon.

Who really won the election? We tend to agree with Bill Whitford, chairman of the Young Democrats, who said that Kennedy gained a victory because the number of votes cast for him was 9.1 percentage points higher than those for Stevenson in 1956. This is a substantial increase, and it might indicate that Kennedy has enough strength to carry the national election next week.

THE MOCK ELECTION was thus an important campus event, and students showed their great interest in it by turning out in large numbers. Various campus groups must have looked in bewilderment at the lack of student apathy involved. We hope they don't stay bewildered too long, however, and eventually decide that the thing to do is sponsor activities based on student interest, rather than providing activities which no one cares about and then complaining that the students don't know what's good for them.—B.T.

The Daily Cardinal

FOUNDED APRIL 4, 1892

Official student newspaper of the University of Wisconsin, owned and controlled by the student body. Published Tuesday through Saturday mornings during the regular school session, by the New Daily Cardinal Corporation, Journalism Hall, Madison. Printed at the Journalism School typography laboratory.

Subscription rate—\$6.00 per year, \$3.50 per semester, by carrier or by mail. Single copies 5 cents each. Second-class postage paid at Madison, Wis.

Member, Inland Daily Press Association
Editorial and Business offices—Journalism School, North wing. Office hours: Editorial 2 p.m.-12 p.m.; Business 8 a.m.-3:30 p.m.

Election Kudos

To the Editor:

The Forum committee would like to take this opportunity to express publically our thanks to the many people not directly concerned with the committee, the Y-Dems, or the Y-GOPS, who helped make the mock election a success.

Of great help, of course, was the **Daily Cardinal** staff, which gave the project promotion with many inches of copy and completely handled the Big Ten co-operation. The Union News Bureau spent much time helping us organize publicity for both campus and city newspapers, as well as radio news releases.

Branches of the administration all over the campus went out of their way to make this once-in-four year event a success. Without the cooperation of all the above groups, the election would not have been the success it was.

The Forum Committee

Fraternity Battle Continues

To the Editor:

I was so completely overjoyed when I read Mr. Langer's letter addressed to me (**Daily Cardinal**, Nov. 2) and all the other members of my "ilk" that I could not refrain from answering.

NOT KNOWING Mr. Langer personally, I would hat to venture a guess as to whether he is a "fraternity man." I have more faith in fraternities than that. I don't think there is any fraternity on this campus that would be so indiscreet as to allow a letter of that type to be written and submitted to the **Cardinal** by one of its members.

Mr. Langer's letter is positively the most un-original, meaningless piece of "garp" that I have ever seen in print. His first paragraph centers around an idea that was first submitted by S. W. to Mr. James M. O'Connell (Oct. 26), telling Mr. O'Connell to get the "chip" off his shoulder. It seems that Mr. Langer liked the idea so much that he used it in his illustrious letter.

AND THEN Mr. Langer goes so far as to say that I implied that my mode of life was the "only correct one." I didn't. I didn't even say what my mode of

life was. For all Mr. Langer knows I may be a fraternity member (perish the thought).

For another specific example of Mr. Langer's originality, I would like everyone to take notice of the structure he used for the letter. Could it be that Mr. Langer could not think of an adequate structure for his letter so he borrowed the structure I used in my letter?

IN ITEMS TWO through five, Mr. Langer attempts to be witty. Well actually, he attempts to be witty in the whole letter, but this is the closest he comes. Thinking that I might be just a slight bit prejudiced against his ridiculous letter, I pointed the letter out to a few people I know, both in and outside of the Greek system, for their honest evaluation with accord to wit and content. The answer which seemed to prevail was, "meaningless, and not even funny."

Then in item 6, Mr. Langer makes a frantic attempt at being logical. He says, "These activities are anything but limited to Greeks, since Greeks make up a minority of the university students." My reply to this is, "So

(continued on page 3)

OPPORTUNITIES FOR ENGINEERING GRADUATES SWIFT & COMPANY positions for ENGINEERS: leading meat packer has

Architectural, Civil, Electrical and Mechanical Engineers for positions in Construction and Equipment Development. Location, Chicago.

Chemical Engineers, Production work with advancement to top-level supervisory operations.

Mr. A. T. Watkins will be on campus, Thursday, November 10. You are invited to make an appointment with your Engineering Placement Office. For further information, write:

Mr. A. T. Watkins, Recruiter

SWIFT & COMPANY

Union Stock Yards,
Chicago 9, Illinois

CLASSIFIED ADS

— RATES —

For Three Days or Less—
25c per line or fraction of line per day.

For Four Days or More—
20c per line or fraction of line per day.
75c minimum charge

Above rates are net. No commissions or discounts on Classified Ads.

FOR SALE

RECORDS, Pre-Recorded Tapes, Voice of Music Phonos and Tape Recorders. Your On Campus Music Center. Josheff Music 670 State St. xxx

HOMEcoming Ball ticket. Call AL 7-1990. 3x4

MAPLE writing desk. Provincial. Ex. cond. \$28. AL. 5-6443, AL. 6-8788.

NE 4-bedroom, 3-year old ranch, 2 car garage, complete workshop, darkroom. 4½% mtg. \$18,-900. CH 4-9005. 10x17

PERSONALS

FOR pen repair & Rubber Stamps made to order it's King Pen Shop 312 State Street in Madison, Wis. 23x19

HEY Minnewancans! Call CE 3-3148 10x5

BUS to U. of Ill. Nov. 11-13. Mark Telpner. AL 6-0276. 5x5

FOR RENT

PARKING—1 block from Union. \$8.50 a month. AL. 6-3013. xxx

SPACE for 1 or 2 men to share 5 Rm. Apt. with 2 others. 309 N. Frances. AL 6-5808. 8x5

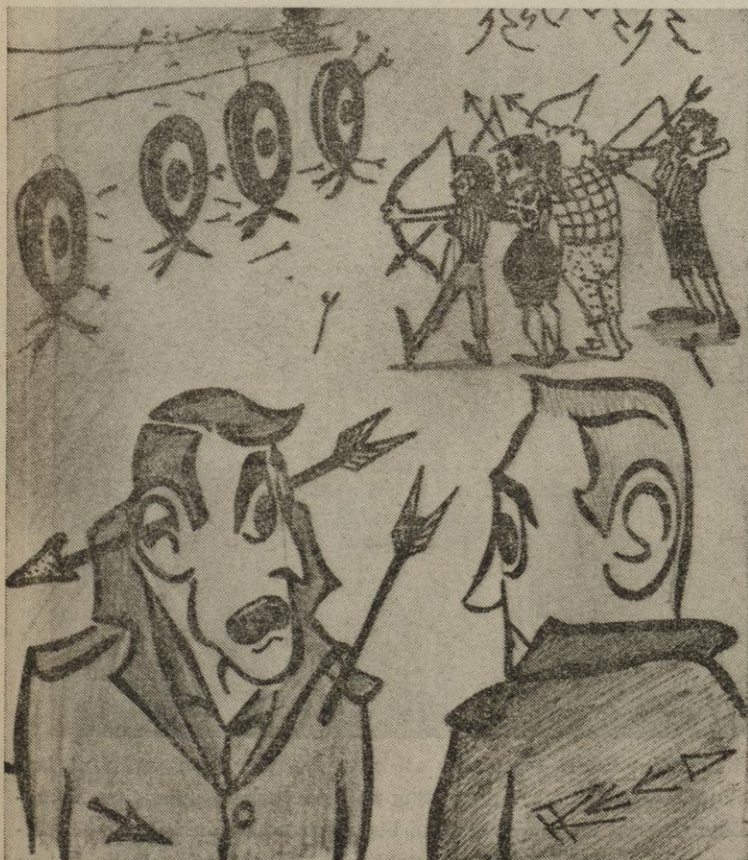
PARKING. 1 block from Union. \$5 a mon. AL. 5-1637, Ken Kramer. 4x9

LOST

BROWN card case containing identification Sat. night. Reward. Call collect 3054 Milton, Wis. G. L. Luke, Jr. 3x5

SHAGGY black female dog, white chest, partially white face, red collar. AL 6-2694. 2x4

DIAMOND Ring. Valuable. Lost Nov. 3 near Union. Reward. U. 2176.



"Whatever you do, DON'T walk behind them!"

In the Mailbox . . .

(continued from page 2)

what if the Greeks make up a minority? Panty raids, water-fights, and snake dances are still their ideas, and are attended by a larger percentage of the Greeks than by any other group.

OF COURSE, we all realize that there hasn't been a panty raid on

Jewish Musician Lectures Sunday

Erwin Jospe, one of this country's leading musicologists, will appear at the B'nai B'rith Hillel Foundation, in a lecture-recital on "The Pleasures of Jewish Music" this Sunday at 7 p.m.

Jospe, who is the director of music at the Anshe Emet Synagogue of Chicago, has lectured and given concerts at Brandeis Arts Institute, McGill, Baylor, University of Arts, Tokyo, National University of Korea, University of Santo Tomas, and many others.

An authority in the field of Jewish music, Jospe is noted not only for his sensitive artistry but also for a delightful sense of humor. In 1958, at the request of the U.S. State department, he toured the Far East under the International Cultural Exchange program.

American Friends Have 5 Point Plan

Carrying on a five-point program to promote human understanding is the American Friends Service Committee (AFSC). The organization works through student work camps, international and national seminars, educational programs, information services, and aid missions.

Through dramatic presentations, speakers, and seminars, the committee attempts to educate the public. They integrate the various programs into their projects on Peace education, International relations, International services, Community relations, and Youth services.

Students help in the redevelopment of neglected, run-down areas on the local, national, and international level. Mark Wyman, former Cardinal editor, participated in a major activity—work camps.

Another major activity are student seminars. Human relations, peace and disarmament, and social action problems are discussed. These are also held on local, international, and national level. At present they are planning to hold a peace conference on three campuses, including the University of Wisconsin.

this campus in quite a while, but I still, very frequently, hear that familiar cry in the middle of the night, "Panty Raid." Is there anything that could be more foolish?

And then Mr. Langer says, in point 11—"Now the 'GG' is trying to state that the Greeks write in the Cardinal only to air their hatred for it." When did I say that? When did I even imply that? I did say, "By their innate hate for the Cardinal. For what other reason would they submit an article for publication?" I think if you'll read that letter carefully, and take a look at the quality of Mr. Langer's letter, you'll see what I was getting at. And oh—by the

way—what does "GG" mean?

THEN IN HIS summary, Mr. Langer implies that I, and my group, have become "intellectually stagnant and decayed." I still maintain that I don't know Mr. Langer. How does he know the kind of people I associate with? I'd certainly enjoy introducing Mr. Langer to a few of my friends sometime. It would be interesting to compare them both socially and intellectually. I have one fear, however: Mr. Langer might learn something new and abstract. He might run into a few original ideas. I certainly wouldn't want to frustrate the poor boy.

D. Lewis

Friday, November 4, 1960

THE DAILY CARDINAL—3

CHRISTIAN SCIENCE EXPLAINED

How individual usefulness and health can be restored through spiritual means, as illustrated in the Bible, will be discussed at a public lecture by John D. Pickett of Chicago, Ill. As part of a nation-wide tour, Pickett will speak

under the auspices of Christian Science organization, 315 N. Mills st., Nov. 7 at 7:30 p.m. His topic will be, "Christian Science: The Joy of Living by Divine Authority."

NEW THIS YEAR! COLUMBIA BRINGS YOU TAPE RECORDERS

Lowest-priced high fidelity tape recorder ever, for home recording fun. Record music, TV and radio programs, your own singing! Powerful 4x6" speaker, 2 speeds. Plays or records up to 60 minutes. Includes microphone. Smartly styled in leatherette. Size 6 1/2 x 11 x 8 1/2".



\$89.95
Pay only \$2.50 per week

Student Accounts Invited.

BEECHER'S

FOR RECORDS AND STEREO
430 State St. AL 6-7561

Nowhere, But NOWHERE
Except

McDonald's 20¢



SHAKES

Full 16-ozs. thick creamy
Open Year Around



2201 S. PARK ST.
3317 University Ave.

GOODMAN'S

Flawless Quality Diamonds



Magnificent Diamond Solitaire

\$169.75

Choose NOW the ring that will reflect your own good taste and be loved by her for a life-time.

Goodman Diamond Prices start at \$67.50

Layaway Now

for

HOLIDAY GIVING

Convenient Terms

No Interest.

No Carrying Charges.

AT

GOODMAN'S

The Diamond Store of Madison
220 State St.

Salem refreshes your taste —"air-softens" every puff



Created by R. J. Reynolds Tobacco Company

Take a puff...it's Springtime! For the cool, fresh softness in Salem's smoke is the very essence of springtime. This most refreshing cigarette of all is made even more so by Salem's special High Porosity paper that "air-softens" the smoke. You'll be delighted with Salem's springtime freshness — its rich, tobacco taste. Smoke refreshed . . . smoke Salem!

- menthol fresh
- rich tobacco taste
- modern filter, too



If you see a financial 8-ball in your future, there is a way you can start getting ahead of it—now!

A life insurance program started while you're still in college can be the first step in your lifetime financial planning. And you profit by lower premiums.

Your campus representative is qualified to discuss with you a variety of plans to take care of your present and future needs.

JOHN L. MEEHAN
214 N. Hamilton, Madison
AL 6-1928

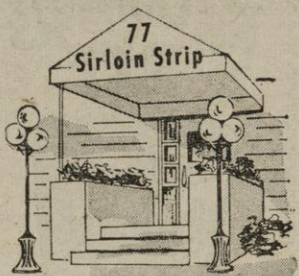
PROVIDENT MUTUAL
Life Insurance Company
of Philadelphia

ORPHEUM**SUN., NOV. 13th**

Mat. 5 P. M.—Eve. 8:15

SEATS NOW

At Box Office

**AMERICA'S MOST HONORED
MUSICAL COMEDY**N.Y.
DRAMA
CRITICS
AWARDPULITZER
PRIZEANTOINETTE
PERRY
AWARD**fiorello!**Exclusive
National
TourPerfectly
wonderful
for
everyone.**PRICES:**MATINEE — \$5.50, \$4.50,
\$2.50, \$2.00EVENINGS — \$6.00, \$5.00,
\$4.50, \$3.50, \$2.50.**EDDIE MUELLER****ORCHESTRA**STILL AVAILABLE FOR
YOUR PARTIES
CALL AL 5-7814**77 Sirloin
Strip****SUPPER CLUB****NEW YORK SIZZLIN
SIRLOIN STRIP
STEAK****\$2.95****SAT. PRE GAME BUFFET
LUNCHEON—featuring****Prime Ribs****TRANSPORTATION TO GAME**

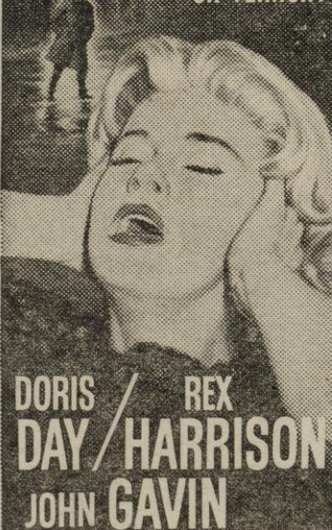
for reservation call

AL. 5-1702**FOR YOUR DINING
PLEASURE AFTER
THE GAME****ENJOY OUR SPECIAL
SIRLOIN STRIP STEAK****DINNER HOURS**
5:30 - 10:30**SUNDAY 12 noon 'till 10:30**Located on Badger Rd.
2 Bks East of So. Park St.**ORPHEUM**

PLEASE SEE—

"MIDNIGHT LACE"

From the Beginning

**THE WOMAN IN THE
MIDNIGHT LACE
...TARGET FOR
TEMPTATION
OR TERROR?****DORIS DAY / REX
HARRISON
JOHN GAVIN**

A ROSS HUNTER-ARWIN PRODUCTION

**"Midnight
Lace"**in Eastman **COLOR****MYRNA LOY • RODDY McDOWALL
HERBERT MARSHALL • NATASHA PARRY
JOHN WILLIAMS with HERMIONE BADDELEY****ENTERTAINMENT****HOMECOMING WEEKEND****Union To Hold Crafts Sale Tomorrow**

A Homecoming crafts sale and a free coffee hour before the football game tomorrow will be the Union's contributions to the Homecoming festivities.

The crafts sale will be in the cafeteria lobby of the Union from 9 a.m. to 12:30 p.m. Proceeds from the sale will go to the Union Workshop for facility improvements. According to Tom Ray, Union Crafts committee chairman, jewelry, novelties, paintings, copper enamels and ceramic pottery will be sold.

Members of the committee in charge of the sale are Mary Hahn and Alice Crow.

The coffee hour will be in the

Main Lounge of the Union tomorrow from 10 to 11 a.m. Students, parents, faculty members, guests, and alumni are invited as guests of the Union Social committee.

FILM CLUB

The Little Badger Film club will meet tomorrow morning. The movie "Heidi" will be shown at 9 a.m. and again at 10:30 a.m. The Union Film committee sponsors this program, which is designed to give married students an opportunity to leave their children at the Union for a few hours on Saturday morning. Tickets for the movie are 25 cents each.

**Plan Coffee Hour
Before and After
Game Tomorrow**

University alumni returning to the campus for Homecoming this weekend will have an opportunity to meet classmates and members of the university's official family at a Wisconsin Alumni coffee hour.

The event will be held in the Camp Randall Memorial building adjoining the stadium during the hour preceding the Wisconsin-Northwestern football game and the hour immediately following it.

University Pres. and Mrs. Conrad A. Elvehjem, other members of the faculty and administration, and students will be hosts and hostesses at the coffee hour.

**4 Bands To Play
At Ball in Union**

Because of the congestion on the dance floor last year, the sale of tickets for Homecoming Ball tomorrow night will be limited.

Bands will be playing in four different rooms. Skitch Henderson and his orchestra will be located in Great hall. The cafeteria will resound to the Basin st. beat of the Saints of Dixieland. Boy Leyson and his orchestra will be installed in Tripp Commons, and the Rathskeller will be headquarters for a rock-and-roll combo.

With four separate rooms for dancing, and a limited ticket sale, there will be ample room for those who prefer to "cut a rug" in as large a space as possible.

**THE VILLA
DANCE TO LIVE
MUSIC**

No other place
closer to campus
**THE DANNY
ROBERTS' TRIO**
FRI. & SAT. NITE

*also for the best in college
atmosphere, Tony has . . .*

- Dancing Nitely
- Charcoal Grill—Pizza—Fireplace
- Never an admission or cover charge
- Huge parking lot
- Dim Lighting!
- Open Nitely

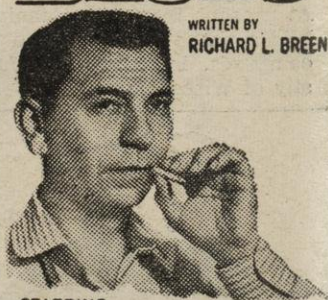
After the game Saturday join the crowd
around our "flaming" and "cozy" fireplace.

AL 7-3048 **THE VILLA** 2330 S. PARK ST.

Presented By The Union Film Committee

**TRAVEL ADVENTURE FILM
SERIES****DISCOVERY—***"The oldest shipwreck ever found"***EXPLORATION—***"In the depths of the Asia Minor Coast"***ARCHAEOLOGY—***"Unlocking Centuries-old Treasures"***BEAUTY—***"Brilliant color on a cruise through the
Islands of the Aegean"***3,000 YEARS
UNDER the SEA**

Narrated by Stanton Waterman

NOVEMBER 14 — 8:00 P. M.**TICKETS — \$1.00****NOW ON SALE AT
UNION BOX OFFICE****WISCONSIN UNION THEATER****STARTING TODAY**you will
see**JACK
WEBB**as
Pete Kelly
in**PETE
KELLY'S
BLUES**WRITTEN BY
RICHARD L. BREEN

STARRING

**JANET
LEIGH****EDMOND
O'BRIEN****PEGGY LEE****ANDY DEVINE • LEE MARVIN****ELLA FITZGERALD****WARNER BROS.**

PRESENT IT IN

CINEMASCOPE

WARNERCOLOR • STEREOGRAPHIC SOUND

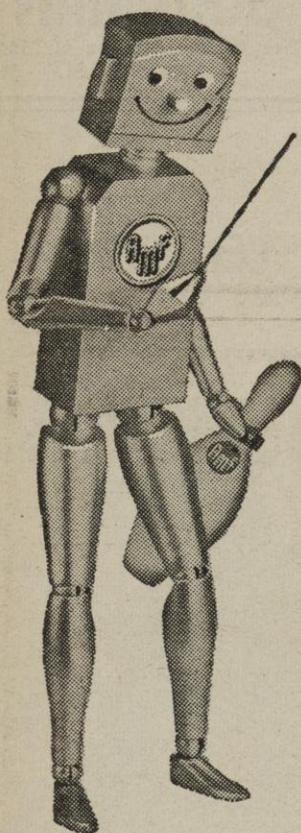
MARK VII LTD. PRODUCTION • DIRECTED BY JACK WEBB

PRINT BY TECHNICOLOR • PRESENTED BY WARNER BROS.

MOVIE TIME**IN THE UNION PLAY CIRCLE**

Continuous from 12 noon

Call AL 5-9000 for Showtime

**WHAT A
LANE THIS
GUY'S GOT!****AMF MODERN
EQUIPMENT****UNION
BOWLING
LANES****OPEN BOWLING**Monday—Thursday:
noon-1, 3:30 - 7 p.m.

Friday: noon - midnight

Saturday: 9 a.m.-midnight

Sunday: 1 - 10:30 p.m.

OPEN BOWLING
AT
THE LARK
EVERY EVENING
2550 University Avenue
CE 8-1133

NOW IT CAN BE SEEN . . . INTACT . . . UNCUT!

Ingmar Bergman's

3 STRANGE LOVES
UNUSUAL, FRANK!
MAJESTIC

ADULT ENTERTAINMENT

A love story so provocative only Bergman would dare to touch it . . . a film you must see with an open mind.

NOW PLAYING

AMATO'S HOLIDAY HOUSE
8 oz. Fillet Mignon \$2.25 Chicken In Basket \$1.50
Spaghetti & Meatballs \$1.25 Shrimp DeLux \$1.35
The Finest in Pizzas
Friday Night Special Open Til 2 A. M.
515 S. Park St. Fish \$1.00, Lobster \$1.75

MILROC'S DELICATESSEN

Send a Wisconsin or Imported Cheese Box for the Thanksgiving and Christmas holidays.

Choose from a variety of beautifully wrapped gift boxes.

Priced from \$2.75

We Gift wrap and mail.

MILROC'S

450 State AL 5-4200
Open 'til 11 p.m. Monday—Thursday and midnight Friday and Saturday.

Always Something Different At

THE LOG CABIN

Biggest Little Beer Parlor
On State Street

529½ State St. AL 6-9270



APPEARING IN PERSON THIS WEEKEND



BOB SCOBEY



AND HIS GREAT NEW BAND

IN THE **BADGER ROOM OF THE TOWNE CLUB**

306 W. Mifflin — Madison

Your favorite Foreign and Domestic Brands of Beer at Popular Prices

ADMISSION—Thurs. \$1.00, Fri. and Sat.—\$1.50

FIRST SHOW 8:30 P. M.

Tonight, In The University Fieldhouse!

HOMECOMING

SHOW

1960



Count Basie & Orchestra
featuring Joe Williams



Don Adams



Lambert, Hendricks
& Ross

Plus — ERNESTINE ANDERSON

8:15 p. m.

\$1²⁵ Seats available at:

ATHLETIC TICKET OFFICE, 8 a.m. - 4 p.m.
FIELDHOUSE, GATE 6 BEGINNING at 5 p.m.



LOVELY—Songstress Barbara Wise will be featured at the Homecoming dance tomorrow night in Great hall. If her singing is comparable to her beauty, she should be a welcome addition to the Skitch Henderson performance.

Homecoming Ball Features Vocalist

Songstress Barbara Wise will serve as Skitch Henderson's featured vocalist tomorrow night at the Homecoming ball in the Union Great hall. The song stylist will be singing everything from blues to rhythm tunes. Also filling an important role in Homecoming Ball will be Ronnie Neubert, a member of the band whose trombone solos will be featured throughout the evening.

Three other bands will share the honors Homecoming night. A Rock and Roll Combo in the Rathskeller will be surrounded by pennants representing the members of the Big Ten conference. Atmosphere in the Cafeteria, where the campus-renowned Saints of Dixieland are scheduled to play, will be provided by the panoramic view of Lake Mendota. Tripp Commons, the home of Bob Leyson's Orchestra, will feature seven-foot-tall caricatures of Wisconsin's first-string football team.

Great Hall itself will be decorated around the all-Homecoming theme of "It's Bucky in '60." Abstract mobiles of Bucky will comprise a part of the decorations.



TRAVEL TO CHICAGO
via BADGER BUS
and NORTH SHORE TRAIN
for the most convenient
connections to your destination

Leaves Madison
And Milwaukee Daily
7:30 AM 10:00 AM 12:30 PM
3:00 PM 5:30 PM 8:00 PM
10:30 PM—Fri., Sat., Sun.
& Holidays only

BADGER COACH FARE
One Way \$1.70 plus tax
Round Trip \$3.06 plus tax

BADGER COACHES, Inc.
UNION BUS STATION
PHONE AL 5-6771

Suppers Follow Pep Rally Tonight

More groups are starting off the big Homecoming weekend with beer suppers. Sharing supper will be Beta Theta Pi and Kappa Kappa Gamma; Chi Psi with Kappa Alpha Theta; Sigma Alpha Epsilon and Delta Delta Delta; Lambda Chi Alpha hosting the nurses from St. Mary's; and Sigma Chi's with their dates.

Others having exchange dinners include Zeta Beta Tau and Sigma Delta Tau; Delta Upsilon with Alpha Chi Omega; Theta Chi and Kappa Delta; Chi Psi and Pi Beta Phi; Alpha Gamma Delta with Theta Delta Chi, and Alpha Tau Omega with Chi Omega.

Finishing up the list are Phi Delta Theta and Delta Gamma; Delta Tau Delta and Alpha Phi; and Zoe Bayliss and David Schreiner house.

Some groups have scheduled parties for tonight. Most of them will get under way after the Homecoming show. Triangle, Phi Kappa Theta, Alpha Epsilon Pi, Phi Gamma Delta, and Psi Upsilon led off the list. After the show festivities are in line for

Things To Write With

Sales & Repairs

DAVIS

PEN & PENCIL SHOP
528 State Madison



"Pre-Furred" Coverage

Here's a dashing young coat with everything to offer—fluffy raccoon collar, bright plaid lining, smart double-breasted styling with "T" pocket trim! By Chadwick in Shuster's camel blend in camel color or 100% Melton in Black, Loden Green, Red, Top Brass. Your choice of full-length or toppler. Sizes 6 to 18.

Topper \$39.95 Full Length \$45

W.J. Rendall's
SQUARE AT STATE

and WESTGATE Shopping Center

members of Delta Upsilon and their dates as well as for the Sigma Chi group.

Alpha Tau Omega, Phi Sigma Delta, Pi Lambda Phi, Alpha Chi Rho, Zeta Beta Tau, and Delta Sigma Phi are also planning on winding up the evening at their houses. Alpha Delta Phi, Chi Phi, Theta Delta Chi, Theta Chi, and Spika Lodge complete the list.

AWS REMINDER

All entries for the AWS design contest must be turned in by next Monday, Nov. 7. The designs will be displayed on Nov. 17 in Great hall.



Religion On Campus

LUTHERAN STUDENT CENTER

228 Langdon St. AL 6-1968

Sat., After-the-game-coffee-hour
Sun., 5:15 p.m.—Sunday Evening Club Cost Supper and program—Panel Discussion "Where Will You Be in '65" by four L.S.A. student members: Bill Graeyna, Lois Engleman, Cloe Ann Loree, Peder Lund.
Mon., Tues., Wed., Thurs.—8:00 a.m. Chapel
Fri., 8:00 a.m.—Christus Chapel, Luther Memorial Church.
Wed., 7:00 p.m.—Choir Rehearsal
Coffee Hour—Everyday at 3:30

St. Paul's Catholic Chapel

723 State St. AL 5-1383

Masses:
Sun., 7:45, 8:45, 10:00, 11:15, 12:30
Breakfast except after 12:30 Mass
Daily, 6:30, 7:00, 7:30, and 4:45 p.m.
Sun., 7:30 p.m. Pax Romana
Tues., and Thurs., 7:30 p.m. Inquiry Classes
Wed., 7:30 p.m.—Newman Association Meeting

WESLEY FOUNDATION

1127 University Ave. AL 5-7267

Sun., 8:30 a.m.—Holy Communion
9:30 & 11:00 a.m.—Worship Service — Sermon: "Cheap Grace and Hard Discipline"
5:30 p.m.—Buffet Supper and Student Program "What the Bible Has to Say about Man."
Prof. Dan Cole of Lawrence College, speaker.

UNITED STUDENT FELLOWSHIP

303 Lathrop St. CE 3-6815

Sun., 9 a.m.—Bible Study
5:00 p.m.—Cost Supper followed by program. Fred Gerlach speaks. "U. S. Fer Abroad"
7:00 p.m. Worship Service
Wed., 7 p.m.—Religious Drama Workshop at First Congregational Student Chapel
9:30 p.m.—Intercessory Prayer at First Congregational Student Chapel
Fri., 2:15 p.m.—"Theology and Engineers" Meet at the U.S.F. House
U.C.C.F. State-Wide Conference (Nov. 11, 12, and 13) Speaker: Dr. Ralph Hyslop, Union Theological Seminary. Topic "The Meaning Beyond the Fellowship"
Conference Highlights—
Fri., 3 p.m. Registration
7:15 p.m. Holy Communion
8:15 p.m. Work Shops
Sat., 8:45 a.m. First presentation by Dr. Hyslop
1 p.m. Second Presentation
7:00 p.m. Work Shop
8:45 p.m. U.C.C.F. Plenary Session
Sun., 10:45 a.m. Worship Service at First Cong. Church, Dr. Hyslop
1:30 p.m. Installation of officers, dedication, and adjournment.
Registration deadline is Nov. 8. Send it to Jim Seeman, 303 Lathrop St.

Committee Sets Button Deadline

All unsold Homecoming buttons and the money for those who have been sold must be turned to the WSA office by 3 p.m. today. Houses which are entered the decoration contest will receive extra points on a proportionate basis toward their display only if buttons and money have been turned in.

ST. FRANCIS HOUSE

1001 University Ave. AL 6-2946

Sun., 8:00 a.m.—Services
10:00 a.m.—Morning Prayer
10:30 a.m. Song (Eucharist)
5:30 p.m.—Evensong
6:00 p.m.—Cost Supper and program: An illustrated talk on the work of the campus Episcopal Church of the University of Illinois by Peter Arvedson.
Communion:
Mon., Tues. and Fri., 7:00 a.m.
Wed., 12:00 noon
Thurs., 5:00 p.m.
Sat., 8:00 a.m.
Evening Prayer: Daily except Sat., 5:00 p.m.
Tues., 7:15 p.m.—Study and discussion groups
Wed., 7:15 p.m.—Choir practice
Thurs., 7:15 p.m.—Instruction class

HILLEL FOUNDATION

611 Langdon St. AL 6-8306

Fri., 8 p.m. Services followed by B. B. Y. O.
Sat., 9:30 a.m.—Services
Sun., 1:30 p.m.—Grad Club Coffee Hour with Dr. Harlyn O. Halvorson.
5:29 p.m.—Cost Supper with Milton Mayer of the PROGRESSIVE MAGAZINE speaking on "God and Man Behind the Iron Curtain."
7:30 p.m.—Folk sing sponsored by the music committee.
8:00 p.m.—Israelis Folk dancing.
Thurs., 8-9 p.m.—Hillel Choir Rehearsal

CHRISTIAN SCIENCE ORGANIZATION

315 N. Mills St. AL 5-4006

Reading Rooms are open 8:30 a.m. to 4:30 p.m. Mon-Fri.
Tuesday Evening Testimony Meetings are at 7:30, all are welcome

PRES HOUSE Presbyterian Student Foundation

731 State St. AL 7-1030

Fri., 4:00 p.m.—Snack Hour
Sun., 9:45 & 11:15 a.m.—Worship Services, Sermon: "For All the Saints"
10:45 a.m.—Coffee Hour
4:00 p.m. Oratorio Choir Practice
5:55 p.m.—Cost Supper—The Program: "A Primitive Communion"
Wed., 7:15 p.m.—Choir Rehearsal
9:30 p.m.—Compline Service
Thurs., 7:15 p.m.—Choir Rehearsal
Fri., Nov. 11—8 p.m.—Pizza Party

CALVARY LUTHERAN CHAPEL & STUDENT CENTER

713 State St. AL 5-7214

Sunday Service — 9:00, 10:15, 11:30 a.m.
5:30 p.m.—Cost Supper—Program—"Religion in Russia," a talk by Prof. Harry Schubert
Tues., 7:00 a.m.—Matsins
7:00 p.m.—Theological Study group
Wed., 8 p.m.—Study Course "The Christian Faith and Scientific Method"
Thurs., 9:30 p.m.—Vespers
7:30 p.m.—Inquiry Class
Coffee Hours—Wed., 9:00 p.m. Thurs., 10 p.m.



In This Corner

By JERRY SHEA

Friday's Filler

Only Illinois' upset of Purdue kept our Big Ten record from another perfect week. Unfortunately we missed on several crucial intersectional games, but under the rules which we've just devised these won't count in our record. Even though we haven't tabulated our overall won-lost mark, we obviously must be leading Zier by an overwhelming margin.

OHIO STATE OVER INDIANA—Not much doubt about this one unless the Buckeyes point too much for the Iowa game next week. Woody's troops should run the Hoosiers out of huge Ohio Stadium unless the Buckeye first team gets lost on the way to the field.

ILLINOIS OVER MICHIGAN — The Illini should show the midwest's TV fans why they were a pre-season conference favorite in dumping the Wolverines. The highly touted Elliott brothers face each other for the first time in this one and our vote goes to older brother Pete.

MICHIGAN STATE OVER PURDUE—Two rugged teams take out their frustrations on each other with State getting a shaky vote. The Boilermakers have too many of their stars on the injury list while the Spartans are in peak physical condition.

MINNESOTA OVER IOWA—After last Jan. 1, we vowed never to pick speed over power, but we're still going with the Gophers. Iowa's luck should have just about run out and Minnesota isn't the kind of team to fumble away their big chance. The fans in Minneapolis have been waiting two decades for a champion and the much maligned Murray Warmath might just have found the combination this fall. We think the Gopher line will turn the tide of battle and besides all these logical reasons, Roundy agrees with us.

NORTHWESTERN OVER WISCONSIN — The clock has just about run out on the Cinderella Badgers and the Wildcats could have a big afternoon tomorrow. Milt Bruhn has done a lot with this team, but its just asking too much when your two best players are on the sidelines. Northwestern is due to break loose and we're afraid they may do it against the Badgers.

KENNEDY OVER NIXON — As Ring Lardner would say, we don't see how either candidate can win. But we think Jack has a better line so we'll go along with him, even though Ike's eleventh hour appearance may make the difference.

NORTHLAND OVER MAYVILLE
Contrary to Zier's slanderous remarks, we confidently predict we will catch our cane tomorrow. After all we've been holding secret practices all week.



Tradition has it that if a senior law student can throw his cane over the cross-bar and catch it, he will win his first case. This particular method may be bad

Friday, November 4, 1960

THE DAILY CARDINAL—7

form, but its probably the only way these two worthies could use to be successful this Saturday. These would be lawyers (tentatively identified as J. Altman and J. Shea) will have their big moment along with the rest of the law seniors right before the Wisconsin-Northwestern game. Be sure to watch closely—their careers may depend on it.

—photo by K. Lowe

Note—Altman is too poor to afford a cane, so he is using his obsolete umbrella.

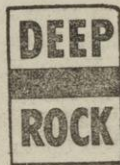
HAIRCUT
4 BARBERS
WISCONSIN UNION BARBER SHOP
Ground Floor—Union

JET-A-WAY

92+ OCTANE

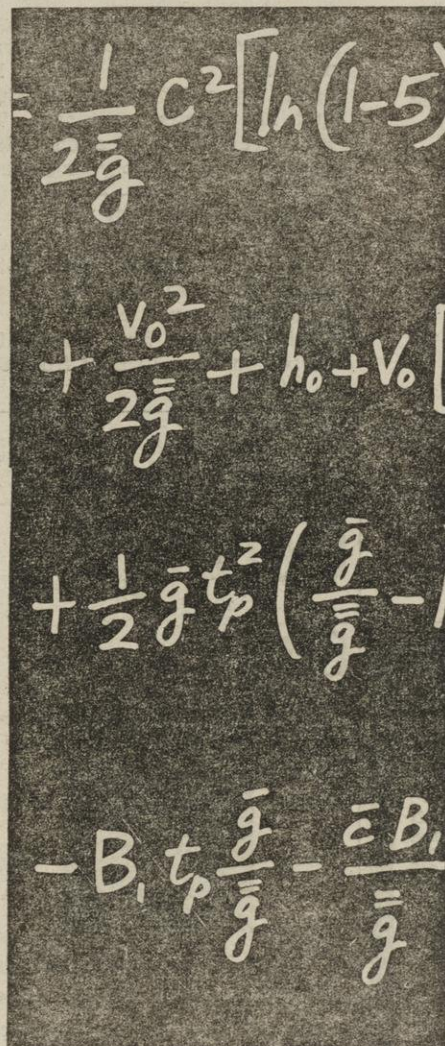
- 2709 Univ. Ave.
- 1201 Regent

- 1002 E. Wash.
- 1040 S. Park St.
- 751 Williamson



TRY A
TANKFUL and
SAVE MONEY

31.9c
Per Gal.
PLUS STAMPS



The TOP name in Missile Inertial Guidance—AC SPARK PLUG seeks top talent!

AC SPARK PLUG, THE ELECTRONICS DIVISION OF GENERAL MOTORS, has immediate, permanent positions in Milwaukee, Los Angeles, Boston and Flint. If you have a BS, MS or PhD degree in EE, Physics, Math or ME, you may qualify...

You can find a challenge and opportunity for advancement at AC. You will be working on such projects as MACE, THOR, POLARIS, the ultra-sophisticated TITAN system and complex Bombing Navigation Systems.

AC and GM will assist your career progress through graduate study at universities in nearby locations. In addition, you will have the opportunity to take exclusive on-the-job course work on the advanced state of the art.

These training programs are now available in Milwaukee:

ENGINEERING PROGRAM—For men whose career aim is design and development of inertial guidance equipment. All recent college graduates will enter this six-month training program with formalized, half-day classroom instruction. This instruction will be in conjunction with rotating job assignments of a two-month duration. These assignments, in Manufacturing, Reliability and Engineering areas, will provide a smooth transition from academic learning to career development.

FIELD SERVICE PROGRAM—formalized two- to four-month classroom training on missile inertial systems and bombing navigation systems. After completion of training program, assignments are to both domestic and foreign sites.

SEE YOUR
PLACEMENT OFFICER
TO SCHEDULE
GENERAL MOTORS
INTERVIEW
NOVEMBER 11, 1960



AC SPARK PLUG
THE ELECTRONICS DIVISION
OF GENERAL MOTORS

MILWAUKEE 1, WISCONSIN
LOS ANGELES, CALIFORNIA
FLINT, MICHIGAN
BOSTON, MASSACHUSETTS

TAPE IT ANYWHERE



Weights just 4 pounds • Operates 50 hours on 4 flashlight batteries • Gives up to 90 minutes recording time on standard 3" reels of tape • Size—9" x 5" x 4 1/4"
Great for family fun and gifts. Ideal for business and professional use.
COME IN AND TRY IT TODAY!

MARK II
79.95

Self-contained in shock-resistant plastic case. Includes microphone, built-in speaker, 3" reel of tape and take-up reel.

THE **HI FI** CORNER

401 State St.

AL 6-0267

The Week's Doings At The University

OCTOBER 31 - NOVEMBER 6, 1960

Conferences at the Wisconsin Center

- 2-4—Certified Public Accountant examination
- 2-4—Wisconsin Pharmaceutical society (central reservation)
- 2-4—Wisconsin Pharmacy institute
- 3-4—Plastics—Basic Chemistry and Technology
- 4—School Transportation Safety institute
- 4—Purchasing conference
- 5—Wisconsin AP-Radio-TV News Editors conference

Friday, November 4...Last Day to Drop Subjects

- 12 p.m.—Movie time: "Pete Kelly's Blues"—Union Play Circle
- 12m-5 p.m.—Voter Registration—Union Play Circle Lobby
- 3:30 p.m.—Geography club—Union Reception
- 4:45 p.m.—Pep rally, "Yell like Hell" contest—Union terrace
- 7 p.m.—Lakeshore Halls film—B-10 Commerce
- 7:30 p.m.—Planetarium demonstration, "The Moon"—Sterling hall
- 8:15 p.m.—Homecoming show with Count Basie—Field house
- 9 p.m.—International dancetime—Union Old Madison
- 9 p.m.—Danskeller—Union Rathskeller

Saturday, November 5

- 9 p.m.—Homecoming craft sale—Union
- 9:15 a.m.—Women's physical education breakfast—Old Madison
- 10 a.m.—Little Badgers movies—Union Play Circle
- 10 a.m.—Cross County track meet, Wis. vs. Marquette—Intramural fields
- 10 a.m.—Homecoming coffee hour—Union Main lounge
- 1:30 p.m.—Football: Northwestern vs. Wisconsin—Camp Randall
- 9 p.m.—LHA Homecoming dance—Holt Commons
- 9 p.m.—Homecoming ball—Union

Sunday, November 6

- American Education Week (November 6-12)
- 2 p.m.—Grad club bridge—Union Loft
- 2:30 p.m.—Bridge lessons—Union Top Flight
- 4 p.m.—Carillon recital, John W. Harvey, carillonneur—Memorial Carillon
- 4:30 p.m.—Grad club coffee hour—Union Reception
- 5 p.m.—Smorgasbord—Union Tripp Commons
- 7:30 p.m.—Duplicate bridge—Union Loft
- 8 p.m.—Pro Arte quartet—Music hall
- 8 p.m.—International friendship hour—Union Reception

Fraternities...

(continued from page 1)
cial waiver, and is expecting to receive it "any day," according to the local president, Phillip Mork.

Mork added, however, that even if they get the waiver, "I don't know what would happen if we pledged a Negro." He explained that, as far as he knows, no ATO chapter has had a Negro as a member, so there is no precedent on which to base speculation about such a situation.

John Mickiewicz, chairman of the Alumni Receivership Board for the local Sigma Nu chapter which is now handling the affairs of the fraternity, said that they have not yet sent in a request for a waiver, but are definitely planning to do so.

"With the waiver, I understand we would be free to activate a Negro," Mickiewicz said last night, "but, as always, membership of the fraternity will be decided solely by the existing members."

Prof. Gladys L. Borchers, chairman of the university Faculty Committee on Human Rights, which is in charge of enforcing the 1960 clause, told the *Daily Cardinal* yesterday that she and her committee are satisfied that the two local fraternities are sincerely attempting to comply to the 1960 clause. She explained, however, that they must present evidence that they have received the waivers to her committee by Dec. 1.

"If they don't present it by then, they're off-campus," she said.

Both fraternities expect to make this deadline, their spokesmen said.

ANSWER TO PREVIOUS PUZZLE

W	A	P	S	H	O	T	P	R	O	P	E	L
E	Y	E	P	A	T	C	H	R	E	V	I	L
B	R	O	U	H	A	H	A	O	M	E	L	E
B	E	N	T	R	A	M	D	I	R	E	C	T
T	O	Y	I	N	G	S	T	A	T	S		
L	A	T	E	X	K	E	R	N	E	L		
A	W	A	R	E	O	R	A	N	Y	A	K	S
V	E	X	N	E	V	P	E	A	J	O	E	
A	S	I	A	E	S	T	E	D	R	A	K	E
T	A	L	K	O	F	Z	E	R	O	S		
F	I	A	T	S	Y	A	R	D	E	D		
I	M	P	A	C	T	S	U	E	C	L	U	B
S	P	A	C	H	E	R	T	I	T	M	O	U
T	E	C	H	N	O	S	T	R	E	A	K	E
S	L	E	E	T			S	E	T	T	E	R

Bus Service...

(continued from page 1)
period, with programs sponsored by Union committees accounting for 217,397.

"THIS IS the first time the Union has looked statistically at what goes on in the building," Webster said, "And it seems that Union committees are doing a substantial amount of the programming."

Reservations for organized events totaled 7,088 or what would be an average of 23 events seven days a week. Attendance at dances and parties totaled 38,931 and classes and demonstration attendance totaled 21,385.

THE DIRECTORATE also approved a budget for a summer session booklet. This will cover all non-classroom activities taking place in the summer, including non-Union as well as Union events.

BOOK EXHIBIT

A books on exhibit for young adults, comprising over 400 new and recent library books for young adults, will be on display at the Wisconsin High School library until Nov. 10. This display has books from 34 trade publishers and 11 university presses. The titles are adult publications selected as interesting to young adults.

INTER-CHURCH DANCE

The Inter-Church Young Adult fellowship is sponsoring its Saturday Night club tomorrow at the Grace Episcopal church on the Capitol square. The Bernie Henderson combo will play from 8:30 to 11:30 p.m.

Tom Gering* says...



"Even if you can't pass the Physical Exam at that time, you can get more insurance later on... with College Life's famous policy, THE BENEFAC-TOR, designed expressly for college men and sold exclusively to college men. Call me today and I'll explain how and why. No obligation, of course."

*TOM GERING

Representing the Only Company that sells Exclusively to College Men
The College Life Ins. Co. of America
Geo. A. Walters & Assoc. Agency
1910 MONROE STREET
MADISON 5, WISCONSIN
AL 7-3543

Homecoming...

(continued from page 1)
"Yell Like Hell" and display contests.

SATURDAY is the big day. A large turnout is expected at the game to cheer the Badgers to a victory over the Wildcats. Before and after the game university President and Mrs. Conrad A. Elvehjem will welcome alumni at a coffee hour in the Camp Randall Memorial building.

Discarding dirty sneakers and wool socks for dressier shoes and heels, couples will be seen celebrating in their best. Homecoming Ball at the Union will star famed orchestra leader, Skitch Henderson, and his band in Great

hall.
OTHER ATTRACTIONS are "Rock 'n' Roll" in the Rat, Bob Leyson with his band at Tripp Commons, and the Saints of Dixieland in the Cafeteria.
An LHA dance at Van Hise commons will feature the music of Bob Rowe and his orchestra. Fraternity parties will be held in the evening. The bewitching hour is 1:30 again this night, marking the end of a wonderful weekend.

WE BUY — WE SELL Shop
IT IT
• typewriters
• art supplies
• miscellaneous items
304 E. Main AL 7-3956

Edwin O. Olson & Son

*bold
burly
beaut!*



Lakeland
SPORTSWEAR

HOCKEY COAT

Sizes 36 to 46

A burly beauty in Crompton's new, wide-wale Corduroy. Warmly lined with Sierra plaid, a colorful blend of wool and mohair. Jumbo, bulky, all wool knit Hockey collar.

\$49⁹⁵

EDWIN O. OLSON & SON

555 STATE at FRANCES
FREE CUSTOMER PARKING Town/Campus Bldg.

High Style



Over 5000 Pair
on display



in Low Styles

AT THE AMAZING

FACTORY TO YOU PRICES

\$2.97 \$3.97 \$5.97

Values to \$24.95

NEIL'S

FACTORY OUTLET SHOE STORE

ON EAST BELT LINE
AT PLUM RD.

OPEN UNTIL 9:00 P. M. EVENINGS

MONDAY THRU FRIDAY

SATURDAY UNTIL 5:30 P. M.