

Quarterly : a Union member's guide to upcoming events. Summer 1994

Madison, Wisconsin: Wisconsin Union, Summer 1994

<https://digital.library.wisc.edu/1711.dl/I5LHU5BY3ABKK87>

This material may be protected by copyright law (e.g., Title 17, US Code).

For information on re-use, see

<http://digital.library.wisc.edu/1711.dl/Copyright>

The libraries provide public access to a wide range of material, including online exhibits, digitized collections, archival finding aids, our catalog, online articles, and a growing range of materials in many media.

When possible, we provide rights information in catalog records, finding aids, and other metadata that accompanies collections or items. However, it is always the user's obligation to evaluate copyright and rights issues in light of their own use.

Summer 1994

Quarterly

A Union Member's Guide to Upcoming Events

The Wisconsin Union Terrace:

There's nothing quite like it...

Where else in the Madison area can you so easily and fully enjoy a summer day? Start off your day with beautiful, live classical music; then escape the midday heat by strolling through the art galleries or maybe cool off in a canoe or sailboat on Lake Mendota; savor the tastes of a Wisconsin summer with a freshly-grilled brat and our famous Babcock ice cream; as night falls, listen to a free band on the Terrace while you sip a cold drink.

We've got it all...
all summer long...

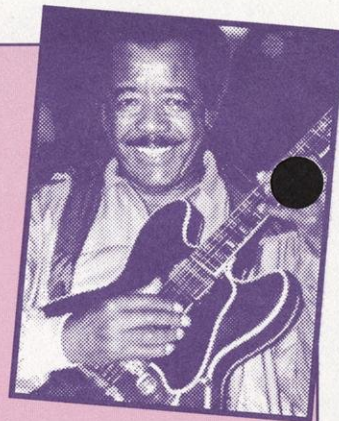
As a Union member recently wrote, "It is the #1 place in Madison to enjoy yourself any time of the day."



THE WISCONSIN UNION

MUSIC

Hot Summer Nights ON THE TERRACE



Free, live music weekend nights on the Terrace (rain location is the Rathskeller)—everything from local favorites to national acts, reggae to the blues! Thursday, Friday and Saturday nights, note nightly starting times. For further information call 608-265-3000.

SUNDAYS

Bagels 'n Bach

10 - 11:30 a.m.

Enjoy live, classical music as you brunch on the Terrace or in the Lakefront Cafeteria, Memorial Union.

TUESDAYS

Classics by Candlelight

5 - 6:30 p.m.

Missed Bagels 'n Bach on Sunday? Here's a second chance to relax, and maybe dine, to more live, classical music every week on the Terrace or in the Lakefront Cafeteria, Memorial Union.

WEDNESDAYS

Open Mic

8 - 11 p.m.

Students take the spotlight on the Terrace or in the Rathskeller, Memorial Union.

THURSDAYS

Thursday Night Music

9 p.m. - midnight

Free live music that warms you up for the weekend, on the Terrace or in the Rathskeller, Memorial Union.

FRIDAYS

Behind the Beat

5 - 7 p.m.

Finish your work week with live jazz on the Terrace or in the Rathskeller, Memorial Union.

TGIF

9 p.m. - midnight

Music to start the weekend on the Terrace or in the Rathskeller, Memorial Union.

SATURDAYS

Saturday Night Special

9 p.m. - midnight

Live music from local, regional and national acts on the Terrace or in the Rathskeller, Memorial Union.

JUNE

Thur 16 SPECIAL EVENT—“An Indigenous Music Celebration”

7 p.m. Four Winds
8 p.m. Ballet Folklorico
9 p.m. Ynka Nan
10:30 p.m. Olmeca

Fri 17 5 p.m. Bob Krueger—Sophisticated standards

Fri 17 9:30 p.m. Wake Ooloo—Rock 'n' roll featuring Dave Weckerman & Glenn Mercer from The Feelies

Sat 18 9:30 p.m. Tina & The B-Side Movement—“If Mick Jagger and Melissa Etheridge had a daughter together, she might be Tina.”

Thur 23 8 p.m. Superchunk with Polvo and Scrawl—Reigning kings (and queen) of indie rock

Fri 24 4 p.m. Mary Ann Egerstrand—Latin jazz (Special 4 p.m. show)

Fri 24 8:30 p.m. Randy Sabien—Jazz violinist

10:30 p.m. Killbilly—Bluegrass-thrash

Sat 25 9:30 p.m. Mufa—Local acid jazz

Thur 30 9 p.m. The Coolhand Band and Danger Prone Daphne—Two cutting-edge Madison rock bands

JULY

Fri 1 5 p.m.

Fri 1 9 p.m.

Sat 2 9 p.m.

Thur 7 8 p.m.

Fri 8 5 p.m.

Fri 8 9 p.m.

Sat 9 9 p.m.

Mama Digdown's Brass Junction—New Orleans street jazz

The Drovers—Chicago's own Irish rock band

Weaker Youth Ensemble—Madison's favorite ska band

Guided by Voices, Prisonshake and Franklin Bruno—Three alternative rock bands from Ohio

Joel Adams—Jazz trombonist

Jimmy Johnson—Chicago blues

The Curbfeellers—Funk from that funky city called Minneapolis

Thur 14 9:30 p.m. Groove Spoon—Groovy funk

Fri 15 5 p.m. Gregg Gill—Jazz drummin'

Fri 15 9 p.m. Los Toallitas—A blend of Middle Eastern and Latin dance rhythms

Sat 16 9 p.m. Willy Porter—A Terrace favorite back again

Thur 21 9:30 p.m. Alejandro Escovedo—Tex-Mex meets American folk

Fri 22 5 p.m. Michael Arnold & Outside In—Jazz guitar

Fri 22 9:30 p.m. Mango Jam—Jammin' feel-good Minneapolis band

Sat 23 9:30 p.m. Orquesta de Jazz y Salsa Alto Mais—Eleven piece Latin jazz band

Thur 28 9:00 p.m. C.C. Adcock—Former sidekick to Bo Diddley and Buckwheat Zydeco

Fri 29 5 p.m. Vincent Davis—Jazz

Fri 29 9:30 p.m. Matt Wilson & Planetmaker—Former lead singer of Trip Shakespeare and his new band

Sat 30 9:30 p.m. The Coctails—Retro jazz pop

AUGUST

Thur 4 9 p.m.

Fri 5 5 p.m.

Fri 5 9 p.m.

Fri 12 5 p.m.

Fri 19 5 p.m.

Fri 26 5 p.m.

Green Daddy & The Jokes—The final performance by this local blues rock band

The Clams—Alternative jazz

Common Faces—R&B inflected folk-pop

James Kennedy & Friends—Electric jazz fusion

The Daniel Wallach Quartet—Jazz and funk

Bob Krueger—Sophisticated standards

THU/FRI/SAT
\$2.50 members
\$3.00 non-members

Memorial Union MOVIES

2ND FLOOR — PLAY CIRCLE

FILM HOTLINE
262-6333

IN THE NAME OF THE FATHER

June 16-18; Thur & Sat, 7:00 & 9:45 p.m.
Fri, 4:15, 7:00 & 9:45 p.m.
Daniel Day-Lewis gives an Oscar-nominated performance.

THE SNAPPER – June 23-25

Thur & Sat, 7:00 & 9:15 p.m.
Fri, 5:00, 7:15 & 9:30 p.m.
A family in present-day Dublin deals with a pregnant daughter who won't reveal the name of the father of her little "snapper" in this hilarious film.

WAR ROOM – June 30, July 1, 2

Thur & Sat, 7:00 & 9:15 p.m.
Fri, 5:00, 7:15 & 9:30 p.m.
This Oscar nominated documentary provides a behind-the-scenes look at Bill Clinton's 1992 presidential campaign.

BLUE – July 7-9

Thur & Sat, 7:00 & 9:15 p.m.
Fri, 5:00, 7:15 & 9:30 p.m.
Juliette Binoche stars in this poignant tale of a woman pulling her life together after the loss of her family. (French with English subtitles)

THE SCENT OF GREEN PAPAYA

July 14-16; Thur & Sat, 7:00 & 9:30 p.m.
Fri, 4:30, 7:00 & 9:30 p.m.
This Oscar nominee for Best Foreign Language Film tells of a young girl growing up in pre-war Vietnam. (English subtitles)

ANIMATION FESTIVAL – July 21-23

Thur & Sat, 7:00 & 9:15 p.m.
Fri, 5:00, 7:15 & 9:30 p.m.
This feature-length compilation highlights two Oscar nominated shorts.

FARAWAY, SO CLOSE – July 28-30

Thur & Sat, 7:00 & 9:45 p.m.
Fri, 4:15, 7:00 & 9:45 p.m.
In this sequel to Wim Wenders' "Wings of Desire", Peter Falk and Nastassja Kinski star in the story of an angel who becomes human after saving a girl from a fatal fall.

LAKE SIDE CINEMA

Free films Monday nights at dusk
on the Terrace (rain location, the Rathskeller)

NEW THIS SUMMER:
Cartoons & shorts before each feature

2001: A SPACE ODYSSEY – June 13
Ground-breaking sci-fi from Stanley Kubrick

REAR WINDOW – June 20
Alfred Hitchcock, James Stewart, Grace Kelly...need we say more?

SHAFT – June 27
Who's the man who'd give his life for the brotherman?

THE NATURAL – July 4
Robert Redford slugs his way through the national pastime.

INDIANA JONES
& THE LAST CRUSADE – July 11
Harrison Ford dons the fedora for his final adventure, with Sean Connery and River Phoenix.

REVENGE OF THE CREATURE – July 18
A 3-D horror extravaganza!

THE LAST WALTZ – July 25
A musical cinematic treat.

RAISING ARIZONA – August 1
Nicolas Cage and Holly Hunter star in this wacky tale of baby-napping.

wisconsin union mini courses

© 1994 THE WISCONSIN UNION



This summer the Wisconsin Union Mini Course program is pleased to offer you two series of companion courses to Madison-area theater events. Each series is designed to complement American Players Theater (APT) or University Theatre summer productions.

Mini Courses will help theater-goers better understand and appreciate the plot, playwright and era of four APT summer productions, Shakespeare's "Hamlet" and "As You Like It," Farquhar's "The Beaux Stratagem," and Moliere's "The Learned Ladies."

Each course is two or three sessions long and is scheduled to correspond to the run

of the production at APT. The instructor, Margaret Quintanar, holds a master's degree in English literature, studied at the Shakespeare Institute, Stratford-on-Avon, and taught dramatic literature at the University of Pittsburgh.

Two Mini Courses will complement University Theatre's summer schedule: *Insider's Look At Play Production* and *The History & Production Of Comedy*. The first course looks at "The Fantastiks" and "Lend Me A Tenor;" the second at "The Fantastiks" and Overmyer's "On The Verge." These courses include special presentations by the directors, designers and technicians who bring the plays to life.

Theater Series Highlights Summer

The instructor for this series is Juliette Willis, the house manager of University Theatre's summer productions. Juliette has an educational background in theatrical history and great enthusiasm for these productions.

Check your summer Mini Course catalog for full course descriptions, class schedules and fees.

Also, check out the over 300 other opportunities that Mini Courses offers this summer. If you do not have a catalog, call (608) 262-3156 today to have one mailed to you.

75th Annual Concert Series

Sunday, October 2, 1994 • 2 p.m.

THE MILWAUKEE SYMPHONY ORCHESTRA

Zdenek Macal will conduct and Cyprien Kataris will be guest pianist as one of America's top twenty orchestras kicks off the 75th anniversary of the Wisconsin Union Theater Concert Series.

Tuesday, November 8, 1994 • 8 p.m.

ORPHEUS CHAMBER ORCHESTRA

This Grammy-winning ensemble will perform Haydn, Mendelssohn and Beethoven without a conductor but with plenty of entertaining, nonverbal communication. Soprano Benita Valente will sing Benjamin Britten's "Les Illuminations."

Friday, December 2, 1994 • 8 p.m.

EMERSON STRING QUARTET

One of the premier string quartets in the world, this chamber ensemble boasts two Grammy awards: one for Best Classical Album, and another for Best Chamber Music Performance.

Saturday, January 28, 1995 • 8 p.m.

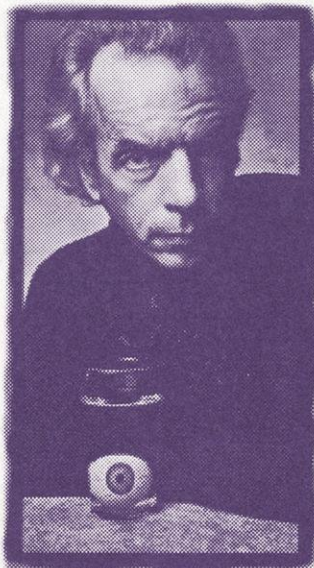
SAMUEL RAMEY, *bass*

A proven master of numerous styles, Ramey is a star at one of the foremost opera companies of the world. This Wisconsin appearance is part of a rare recital tour.

Friday, February 3, 1995 • 8 p.m.

LYNN HARRELL, *cello* & YEFIM BRONFMAN, *piano*

Harrell and Bronfman will perform together for the first time on the Union Theater stage to combine their romantic and dramatic styles.



Spalding Gray

Friday, March 3, 1995 • 8 p.m.

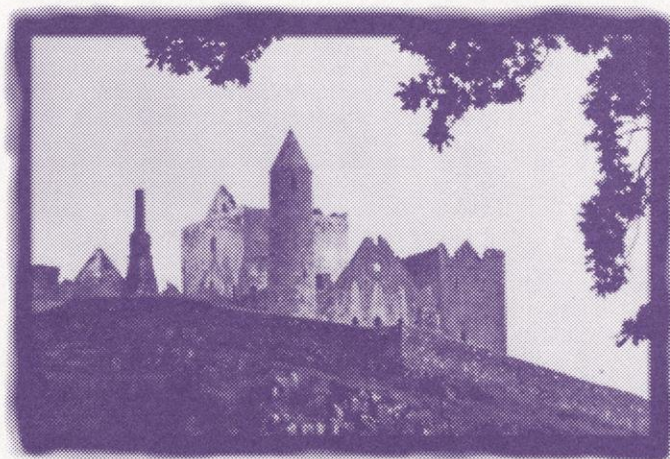
ANDRAS SCHIFF, *pianist*

The International Classical Music Awards Instrumentalist of 1993, Schiff won rave reviews for his rare U.S. performance of Schubert piano sonatas last season.

Friday, April 28, 1995 • 8 p.m.

CHAMBER MUSIC SOCIETY OF LINCOLN CENTER

The performance will include a Wisconsin Union Theater and Wisconsin Presenters Network commissioned quintet for clarinet and strings by Joan Tower.



Ireland

Performance Series

Thursday, October 6, 1994 • 8 p.m.

BILL T. JONES / ARNIE ZANE & CO.

Drawing upon his experiences being HIV-positive for this multimedia/music/theater/dance performance, Jones combines images by videographer Gretchen Bender, original music by American composers and dancers from his own company to create STILL/HERE.

Friday, October 28, 1994 • 8 p.m.

RICHARD DAVIS & FRIENDS

Called a bass innovator, this UW professor has played with Miles Davis, Sarah Vaughn, Bruce Springsteen and Barbara Streisand. Pianist Sir Roland Hanna, percussionist Ronnie Burrage, trumpet player Cecil Bridgewater and Ricky Ford on tenor saxophone will join Davis in this performance.

Friday, November 11, 1994 • 8 p.m.

EIKO & KOMA

These Japanese-born dancers/choreographers find their inspiration in natural images of wind, water and trees. This Union Theater presentation of their contemporary, multimedia work "Land" marks the performers' Wisconsin debut.

Thursday, February 9, 1995 • 8 p.m.

KODO

After selling out the Union Theater three times, these Japanese drummers and musicians return by popular demand to display their ever-present energy, power and emotion.

Thursday, March 2, 1995 • 8 p.m.

MACBETH

Shakespeare's classic is restaged as a political allegory in 20th century Africa by leading black actors of the Royal Shakespeare Company and the Royal National Theatre of Great Britain.

Saturday, March 25, 1995 • 8 p.m.

"GRAY'S ANATOMY"

Actor and author Spalding Gray performs his own monologue which takes a surrealistic trip through the world of alternative medicine. The "one-man cast of tens" portrays the individuals met along the way.



35th Travel Adventure Film Series

Mon, Tues & Wed
Oct. 10, 11 & 12, 1994 • 7:30 p.m.

THE CRUSADES

Produced and narrated by Frank Klicar

Mon, Tues & Wed
Oct. 31, Nov. 1 & 2, 1994 • 7:30 p.m.

HIGH COUNTRY ADVENTURE

Produced and narrated by John P. Wilson

Mon, Tues & Wed
Dec. 5, 6 & 7, 1994 • 7:30 p.m.

HUNGARY—LAND OF PROMISE

Produced and narrated by Phil Slayton

Mon, Tues & Wed
Feb. 6, 7 & 8, 1995 • 7:30 p.m.

EMERGING INDOCHINA

Produced and narrated by Rick Ray

Mon, Tues & Wed
March 6, 7 & 8, 1995 • 7:30 p.m.

SONG OF IRELAND

Produced and narrated by Buddy Hatton

Mon, Tues & Wed
April 24, 25 & 26, 1995 • 7:30 p.m.

DARWIN'S PATAGONIA

Produced and narrated by Ken Armstrong



Orpheus Chamber Orchestra

Ticket Information

Series subscribers who would like to keep their seats from the '93-'94 subscription series must renew them by July 1, 1994. Performance Series subscriptions are \$105 for all six events or you may create your own 4 or 5 event series for \$20 per ticket. Concert Series subscriptions are \$125 for all seven events or you may create your own 5 or 6 event series for \$20 per ticket. Travel Adventure Series subscriptions are \$23 for all six events.

NEW BONUS VALUE: All series subscribers (Performance, Concert, Travel Adventure) are eligible to purchase additional tickets to Performance or Concert Series events for \$20. All orders must be submitted together to receive this special opportunity.

Series subscriptions are presently available by mail. Tickets for fall semester individual events go on sale August 31, 1994. Tickets for spring semester individual events go on sale January 24, 1995.

If you have not yet received the Union Theater 1994-95 season brochure and would like a copy, please notify the Theater Office at (608) 262-2201. If you are presently not receiving Theater mailings, but would like to receive them in the future, please call the Membership Office at (608) 262-2263.

Don't forget special Theater benefits for Union members

Order your series subscription by July 1, 1994 and you'll receive priority in seat location and a special \$5 Union member discount on Performance Series and Concert Series orders and a Union member discount of \$1 on Travel Adventure Film Series orders.



Scene from MacBeth



KODO

In The

Galleries

June 18 - July 22

Spirit in the Land

A selection of pieces by over a dozen artists, mostly from the Madison area, combine science and art to deepen awareness and appreciation of the environment.

Porter Butts and Class of 1925 Galleries

July 9 - July 14

Tribute to Howard M. Temin

A varied pictorial display, including candid laboratory and classroom photographs, will highlight the important contributions to research and teaching of UW professor and Nobel Prize winner Howard M. Temin (1934-1994).

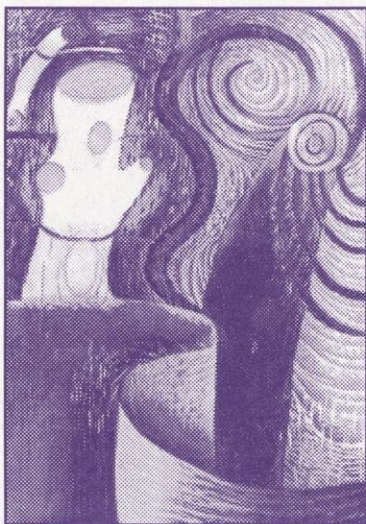
Theater Gallery

July 30 - September 2

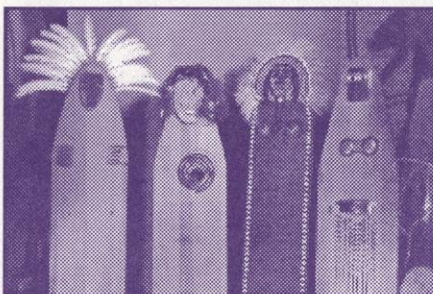
Prints by Karen Kunc

Nationally and internationally known and exhibited artist Karen Kunc will present a variety of her woodcuts and prints. The work of this University of Nebraska associate professor is influenced by Oriental and expressionistic art.

Porter Butts Gallery



Unfolding Story, Karen Kunc



Honoring the Crone, Lynn Slattery Hellmuth. Black and white photo by Vickie Sprinkman, Nursing Matters magazine

July 30 - September 2

Honoring the Crone

This installation by Lynn Slattery Hellmuth is a collaborative effort by writers and the artist to honor the older women in our lives.

Class of 1925 Gallery

July 30 - September 2

Images of the Terrace

Finding the Terrace and famous Terrace chairs to be fascinating and challenging subjects, Treva Breuch has captured the essence of the Union in photographs.

Theater Gallery

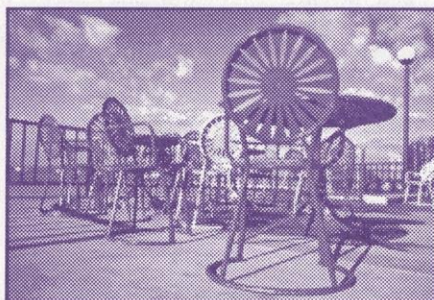


Photo: Treva Breuch

The Porter Butts and Class of 1925 Galleries, located on the second floor of Memorial Union, are open daily from 10 a.m. to 6 p.m.

The Theater Gallery, located on the first and second floor of Memorial Union's Theater wing, is open during regular building hours.

Exhibits and gallery hours are subject to change. For more information about any of the exhibits, call (608) 262-5969.

CHANGES IN MEMBERSHIP AND RATES

The Wisconsin Union is pleased to offer a new membership, the Recent Grad Life for \$125 (one payment). This membership is available to individuals enrolled at the UW-Madison within the last five years. Annual members who have already begun payment toward a life membership and who qualify for this special have the option of paying the balance (accumulated total of \$125) in one payment to become a life member. This membership is available after July 1, 1994.

Joint Life memberships are being discontinued July 1, 1994. However, life members who were members prior to this change will always have the opportunity to purchase a Joint Life membership for a spouse for the Student Life membership rate, presently \$45.

Also as of July 1, 1994, some membership rates will increase. The Student Life and Joint Life rates will be \$50; the single payment for Life membership will be \$200; annual members must accumulate \$220 to be considered Life members; the annual payment for a resident (living within 40 miles of Madison) will be \$50 and annual payment for a non-resident will increase \$30. The rates for Affiliate membership will remain \$10 per year. Affiliate memberships replace our spouse options and are intended for spouses, relatives, significant others and friends of Union members.

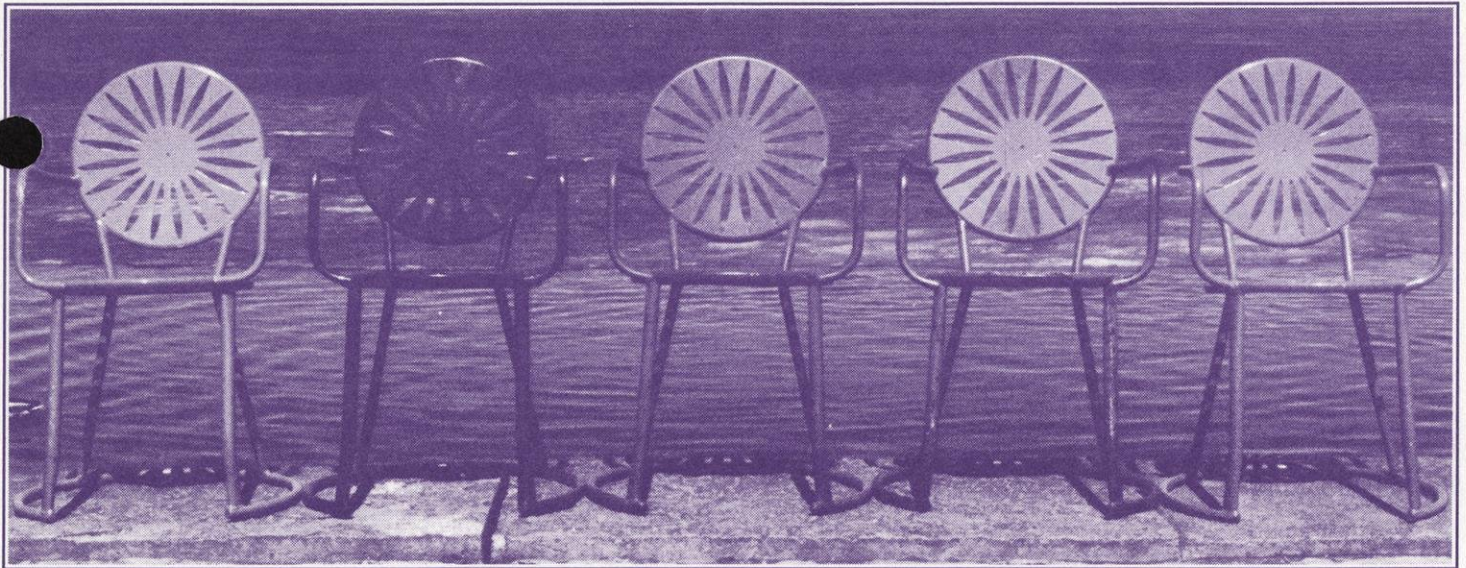
For more information about these changes, you may contact the Membership Office, Room 410, Memorial Union or call us at (608) 262-2263.



The Wisconsin Union Craftshop has a new medium for your creative impulses. In addition to pottery, woodworking, photography, stained glass, batik, silkscreening, art metals and glass fusing, you can now try your hand at leathercrafting.

Whether you're making your own sandals or sculpting a purse or belt for a unique gift, the Craftshop has all the tools you need to do the job right. Mini Courses offers Beginning Leathercrafting courses for children and adults.

For more information on the Wisconsin Union Craftshop call (608) 262-1282.



BRING A BIT OF THE TERRACE TO YOUR BACKYARD

Now you can enjoy the Wisconsin Union's sunburst chairs right in your own backyard. A limited number of these classic chairs are being constructed for your summer enjoyment. Each Terrace chair is hand-built one at a time and is available in either Badger red or white. Chairs are \$137* for Union members, \$150* for non-members. For more information, or to order your chairs, call (608) 262-0887.

*Prices include tax. Shipping extra.

MORE CHANGES

Finishing touches are being made to the first floor Memorial Union "grand promenade." Concentration has been on two areas recently: the Trophy Room (just outside of the Rathskeller) and the Park Street entrance (near the Theater Box Office.)

The Trophy Room has a new lighting system and booths along each side of the room. Dick Pierce, Memorial Union Operations manager, has received "very positive comments" about the improvements and notes increased numbers of people studying and enjoying meals there. Murals with a multicultural theme will soon replace the trophy cases on the walls.

The Park Street entrance, the second most heavily used entrance at Memorial Union, will soon be more "eye-catching." Despite the construction, the Union Theater Box Office is fully functional; the changes in lighting and flooring around it will be completed by the end of June.

The Games Room at Union South will be bigger and better than ever in the fall. The Games Room will be closed all summer to renovate. In the fall, expect big-screen TVs, nicer billiards and table tennis and more food items on the menu. The updated room will also allow space for live band performances. Tim Gloeckler, Union South Operations associate manager, says the improvements are in response to the needs and suggestions of Union members and students.

In early April, the Service Center closed its window on the lower level of Memorial Union. Essentials, the information desk and store on Memorial Union's first floor, took over most of the Service Center's operations such as film processing, Union memorabilia sales and stamp sales.

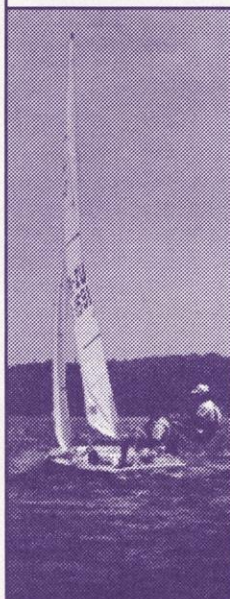
Union South continues to offer the other services that the Memorial Union Service Center provided, check cashing, UPS service, and photocopying.

HOOFER CLUB SUMMER KICKOFF DATES

| | | |
|--------------|-----------------|-------------------------------|
| Riding Club | June 15, 7 p.m. | Hoofer Lounge, Memorial Union |
| Scuba Club | June 16, 7 p.m. | See TITU |
| Outing Club | June 21, 7 p.m. | Great Hall, Memorial Union |
| Gliding Club | June 22, 7 p.m. | Hoofer Lounge, Memorial Union |
| Sailing Club | June 23, 8 p.m. | Tripp Commons, Memorial Union |

Questions about Club meetings?

Call the Hoofer Hotline: 265-HOOF (4663)



SMOOTH SAILING

Want to have fun in the sun and meet exciting people? Join the Hoofer Sailing Club. Members of the Sailing Club have unlimited use of the club's boats and unlimited access to Hoofer sailing instructors and lessons. You could be sailing solo within three days. And once you're a rated skipper, you can take your friends for a sail. The Sailing Club is economical—you won't find a better sailing deal anywhere!

The club also plans events like lakefront parties every Friday night, moonlight cruises and the Commodore's Ball on July 22 at 8 p.m. in the Great Hall at Memorial Union. Don't miss the kick-off meeting on June 23 at 8 p.m.



THE WISCONSIN UNION

University of Wisconsin-Madison
Memorial Union, 800 Langdon St.
Madison, WI 53706-1495

Non-Profit Org
U.S. Postage
PAID
Madison, Wisconsin
Permit No. 84

Address Correction Requested

SUMMER CHILDREN'S PROGRAMS

For children ages 4 - 7. All programs are held from 10 - 11:30 a.m. at the Memorial Union, Play Circle. Call 608-263-2432 for details.

June 23

SPECTRUM JUGGLER, Alan Tilove

July 7

KOKOPELLI PUPPET THEATRE

July 21

WHAT A WONDERFUL WORLD

OUTDOOR SMOKE-FREE AREAS

There are now three, outdoor non-smoking areas at Memorial Union and Union South. At Memorial Union, the plaza in front of the Union Theater at the west end of the Terrace is designated non-smoking. At Union South, the southeast corner of the plaza between the Union and the Wendt Library, and the east end of the second-floor balcony off of the Sports Cafe are each smoke-free. Appropriate signs designate the areas.

THROW YOUR TAILGATE PARTY AT UNION SOUTH

Don't fumble your chance to host a great tailgate party this season. The catering staff at Union South is ready to create a tailgate spread that's just right for you and your guests. Don't wait! Party rooms are filling fast. Call the Union South Reservations office at (608) 263-2543 and ask for Jacques Girard.

SUMMER TRAVEL PLANS...

The Union Travel Center is pleased to offer a new, special rate for Union members. Round-trip tickets for Van Galder's Alco bus trips to downtown Chicago or O'Hare Airport are now available for \$26—that's a savings of \$8.

Editor: Sue Jebson
Writer: Velia Bolda
Layout: Memorial Union Graphics Dept.



WISCONSIN UNION TELEPHONE DIRECTORY

| | |
|---------------------------|---|
| Catering | MU 262-1631 or 263-1717 US 263-7306 |
| Craftshop | 262-1282 |
| Games Room | MU 262-1330 US 263-2514 |
| Hoofers | 262-1630 |
| Hotel | MU 262-1583 US 263-2600 |
| Information Desk | MU 265-3000 US 263-2600 |
| Membership | 262-2263 |
| Mini Courses | 262-3156 or 262-5771 |
| Outdoor Rentals | 265-2910 |
| Room Reservations | MU 262-2511 US 263-2543 |
| Store, Essentials | MU 262-1583 |
| Store, Corner Store | US 263-3960 |
| Theater Box Office | 262-2201 |
| Travel Center | 262-6200 |