



# LIBRARIES

UNIVERSITY OF WISCONSIN-MADISON

## **Specimens of large wood type manufactured by Hamilton Manufacturing Co..**

Two Rivers, Wis.: Hamilton Manufacturing Co., 1932

<https://digital.library.wisc.edu/1711.dl/ZZYNHEB6G2EBC8N>

<http://rightsstatements.org/vocab/InC/1.0/>

The libraries provide public access to a wide range of material, including online exhibits, digitized collections, archival finding aids, our catalog, online articles, and a growing range of materials in many media.

When possible, we provide rights information in catalog records, finding aids, and other metadata that accompanies collections or items. However, it is always the user's obligation to evaluate copyright and rights issues in light of their own use.



*Specimens*  
*of*

LARGE  
WOOD  
• • TYPE

---

---

MANUFACTURED BY

HAMILTON MANUFACTURING CO.

MAIN OFFICE & FACTORY  
TWO RIVERS, WIS.

EASTERN OFFICE & WAREHOUSE  
RAHWAY, N. J.

PACIFIC COAST PLANT, LOS ANGELES, CALIF.



No. 97—Class L

Thirty Line

DINE

No. 266—Class L

Thirty Line

RB

No. 81—Class L

Thirty Line

RIB

No. 4006—Class L

Thirty Line

BE

Type shown hereon—Caps, Lower Case and Figures—supplied in any size desired up to 100 line.

Larger or smaller sizes increase or decrease in exact proportion. Example: The 8 line size is exactly twice as high, twice as wide, and the stems twice as heavy as the same design in 4 line.



No. 4050—Class L Thirty Line

RI

No. 4045—Class M Thirty Line

M

No. 6243—Class L Thirty Line

BI

No. 6011—Class M Thirty Line

BR

Type shown hereon—Caps, Lower Case and Figures—supplied in any size desired up to 100 line.

Larger or smaller sizes increase or decrease in exact proportion. Example: The 8 line size is exactly twice as high, twice as wide, and the stems twice as heavy as the same design in 4 line.



No. 4099—Class N Thirty Line

N

No. 123—Class N Thirty Line

R

No. 98—Class O Thirty Line

D

No. 5072—Class O Thirty Line

B

Type shown hereon—Caps, Lower Case and Figures—supplied in any size desired up to 100 line.

Larger or smaller sizes increase or decrease in exact proportion. Example: The 8 line size is exactly twice as high, twice as wide, and the stems twice as heavy as the same design in 4 line.



No. 679—Class N Thirty Line

RI

No. 681—Class O Thirty Line

IE

No. 673—Class O Thirty Line

R

No. 680—Class O Thirty Line

D

Type shown hereon—Caps, Lower Case and Figures—supplied in any size desired up to 100 line.

Larger or smaller sizes increase or decrease in exact proportion. Example: The 8 line size is exactly twice as high, twice as wide, and the stems twice as heavy as the same design in 4 line.



No. 3027—Class N Thirty Line

**DN**

No. 153—Class M Thirty Line

**RN**

No. 5025—Class N Thirty Line

**RI**

No. 152—Class M Thirty Line

**HI**

Type shown hereon—Caps, Lower Case and Figures—supplied in any size desired up to 100 line.

Larger or smaller sizes increase or decrease in exact proportion. Example: The 8 line size is exactly twice as high, twice as wide, and the stems twice as heavy as the same design in 4 line.



No. 5028—Class N Thirty Line

DI

No. 154—Class N Thirty Line

BI

No. 5029—Class N Thirty Line

R

No. 10—Class N Thirty Line

E

Type shown hereon—Caps, Lower Case and Figures—supplied in any size desired up to 100 line.

Larger or smaller sizes increase or decrease in exact proportion. Example: The 8 line size is exactly twice as high, twice as wide, and the stems twice as heavy as the same design in 4 line.



No. 5033—Class P

Twenty-four Line

**B**

**I**

No. 4050—Class L Forty Line

No. 4045—Class M Forty Line

**R**

Type shown hereon—Caps, Lower Case and Figures—  
supplied in any size desired up to 100 line.

**D**

Larger or smaller sizes increase or decrease in exact proportion. Example: The 8 line size is exactly twice as high, twice as wide, and the stems twice as heavy as the same design in 4 line.



No. 5014—Class P

Twenty-four Line

ME

No. 81—Class L

Forty Line

BE

No. 266—Class L

Forty Line

RI

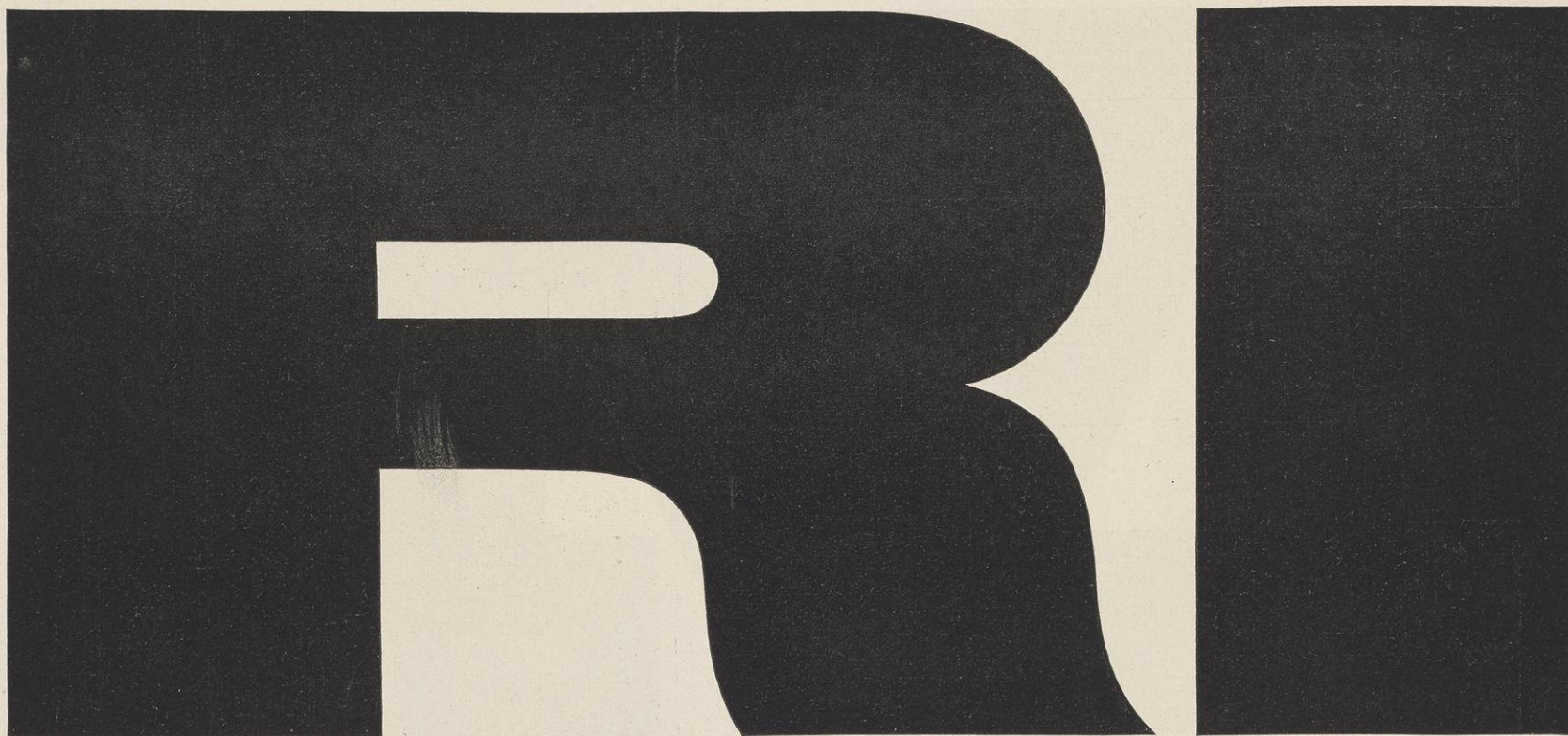
Type shown hereon—Caps, Lower Case and Figures—  
supplied in any size desired up to 100 line.

Larger or smaller sizes increase or decrease in exact proportion. Example: The 8 line size is exactly twice as high, twice as wide, and the stems twice as heavy as the same design in 4 line.



No. 5075—Class P

Twenty-four Line

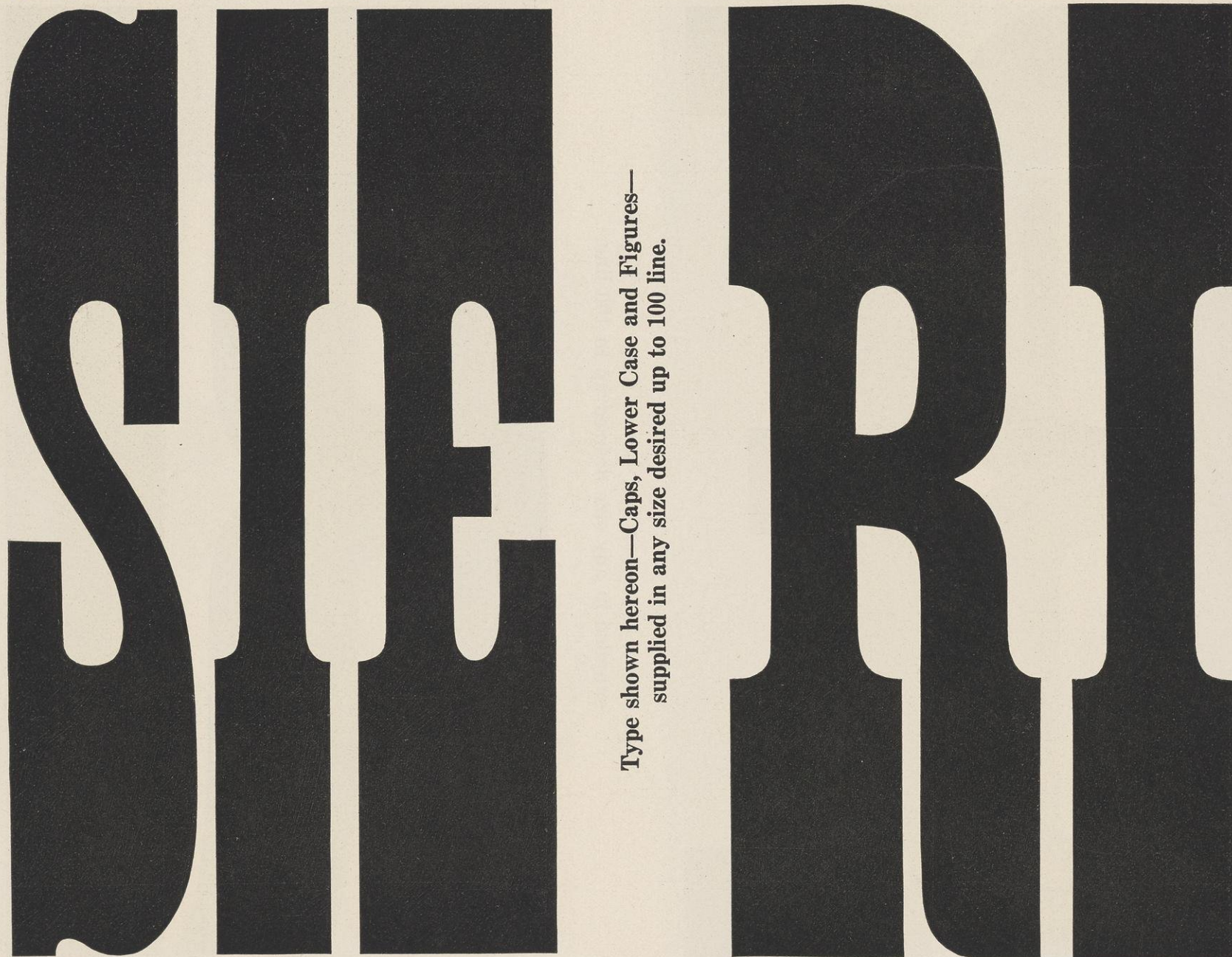


No. 95—Class N

Forty Line

No. 24—Class N

Forty Line



Type shown hereon—Caps, Lower Case and Figures—  
supplied in any size desired up to 100 line.

Larger or smaller sizes increase or decrease in exact proportion. Example: The 8 line size is exactly twice as high, twice as wide, and the stems twice as heavy as the same design in 4 line.



No. 126—Class Q

Twenty Line

ER

No. 5028—Class N Forty Line

No. 5025—Class N

Forty Line

HE

Type shown hereon—Caps, Lower Case and Figures—  
supplied in any size desired up to 100 line.

BI

Larger or smaller sizes increase or decrease in exact proportion. Example: The 8 line size is exactly twice as high, twice as wide, and the stems twice as heavy as the same design in 4 line.



No. 702—Class O

Twenty-four Line

BS

No. 156—Class N Forty Line

No. 3164—Class N

Forty Line

BR

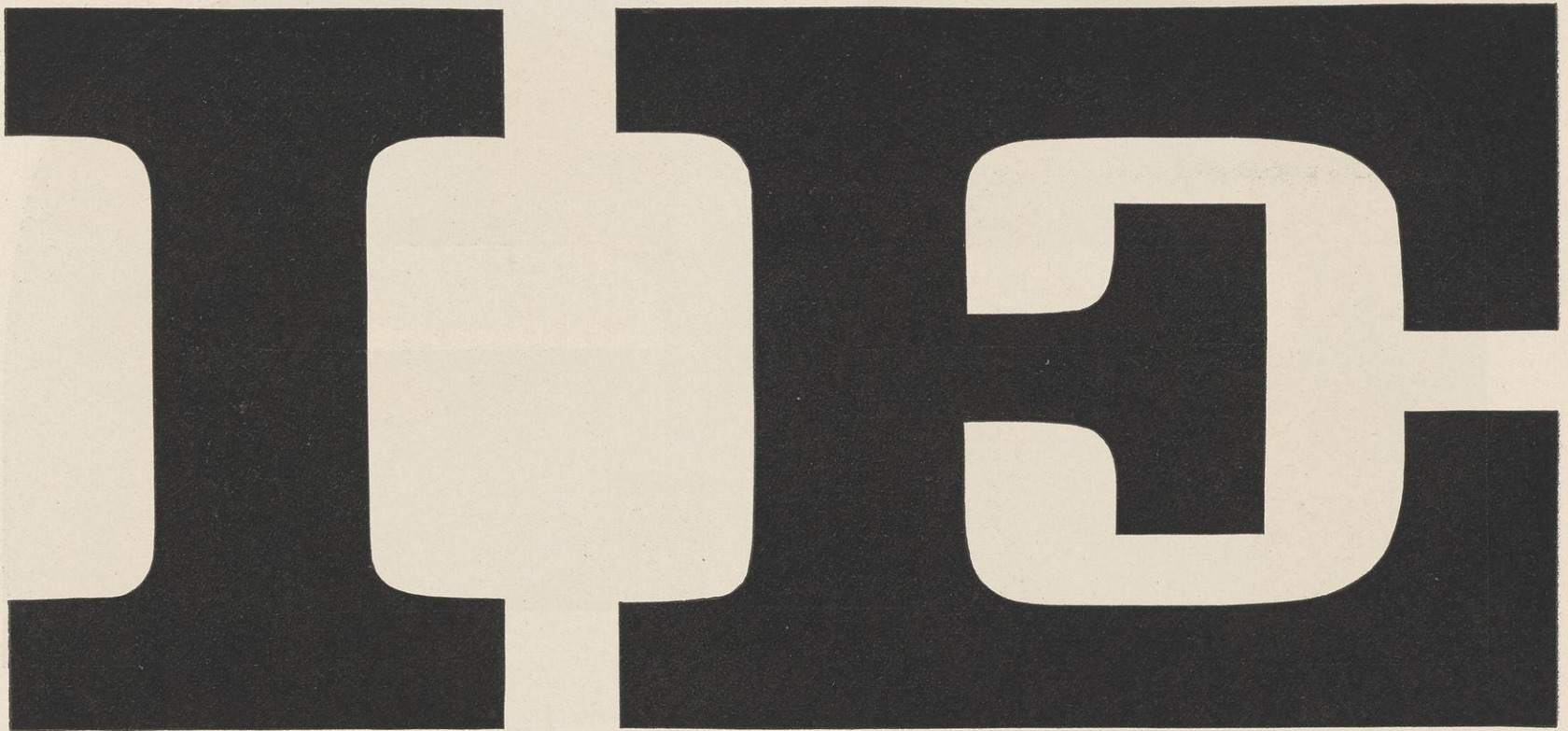
Type shown hereon—Caps, Lower Case and Figures—  
supplied in any size desired up to 100 line.

Larger or smaller sizes increase or decrease in exact proportion. Example: The 8 line size is exactly twice as high, twice as wide, and the stems twice as heavy as the same design in 4 line.



No. 53—Class P

Twenty-four Line



No. 255—Class N

Forty Line

No. 37—Class N

Forty Line



Type shown hereon—Caps, Lower Case and Figures—  
supplied in any size desired up to 100 line.

Larger or smaller sizes increase or decrease in exact proportion. Example: The 8 line size is exactly twice as high, twice as wide, and the stems twice as heavy as the same design in 4 line.



Fifty Line

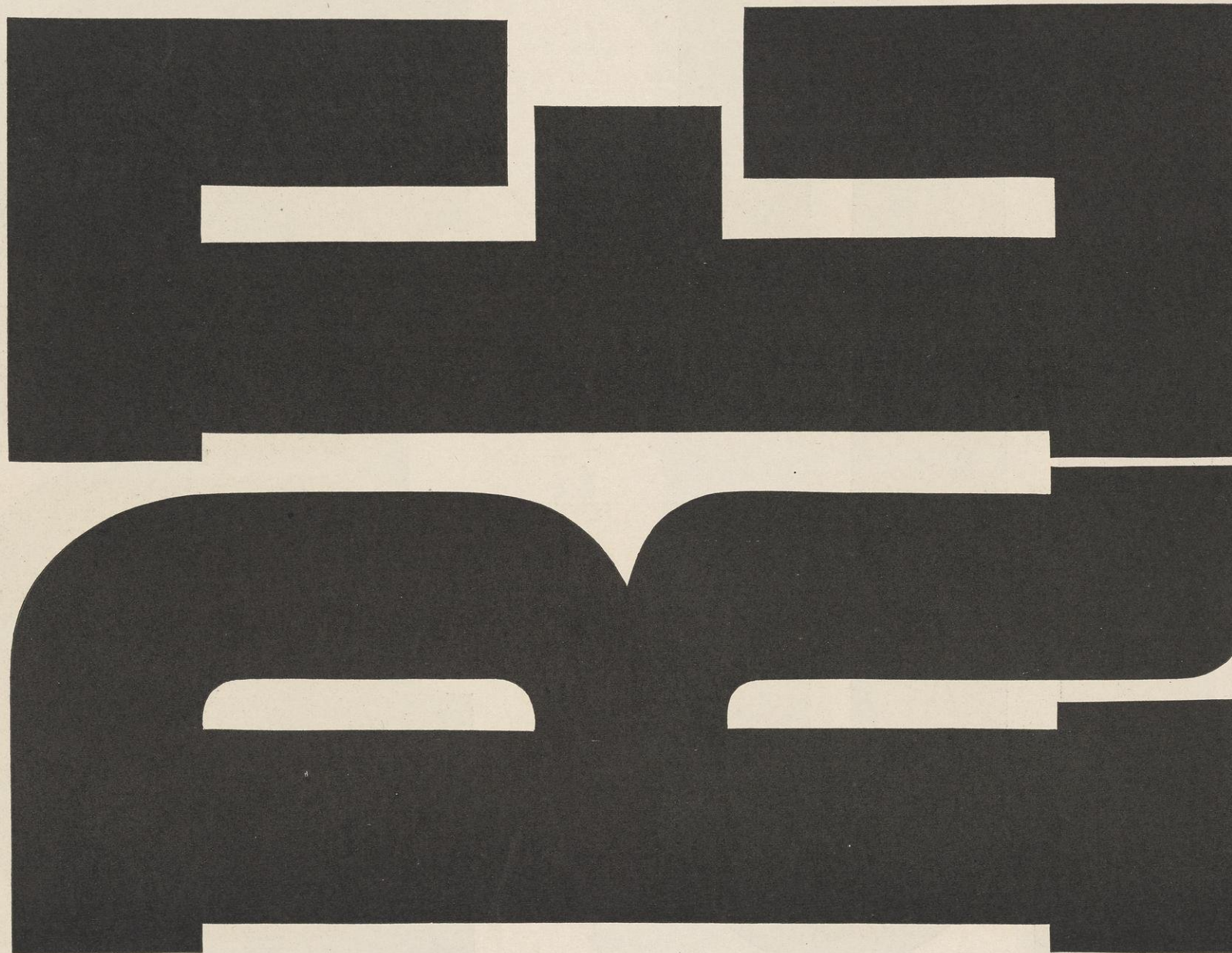
No. 5028—Class N



Type shown hereon—Caps, Lower Case and Figures—  
supplied in any size desired up to 100 line.

Fifty Line

No. 255—Class N



Larger or smaller sizes increase or decrease in exact proportion. Example: The 8 line size is exactly twice as high, twice as wide, and the stems twice as heavy as the same design in 4 line.



Fifty Line



No. 24—Class N

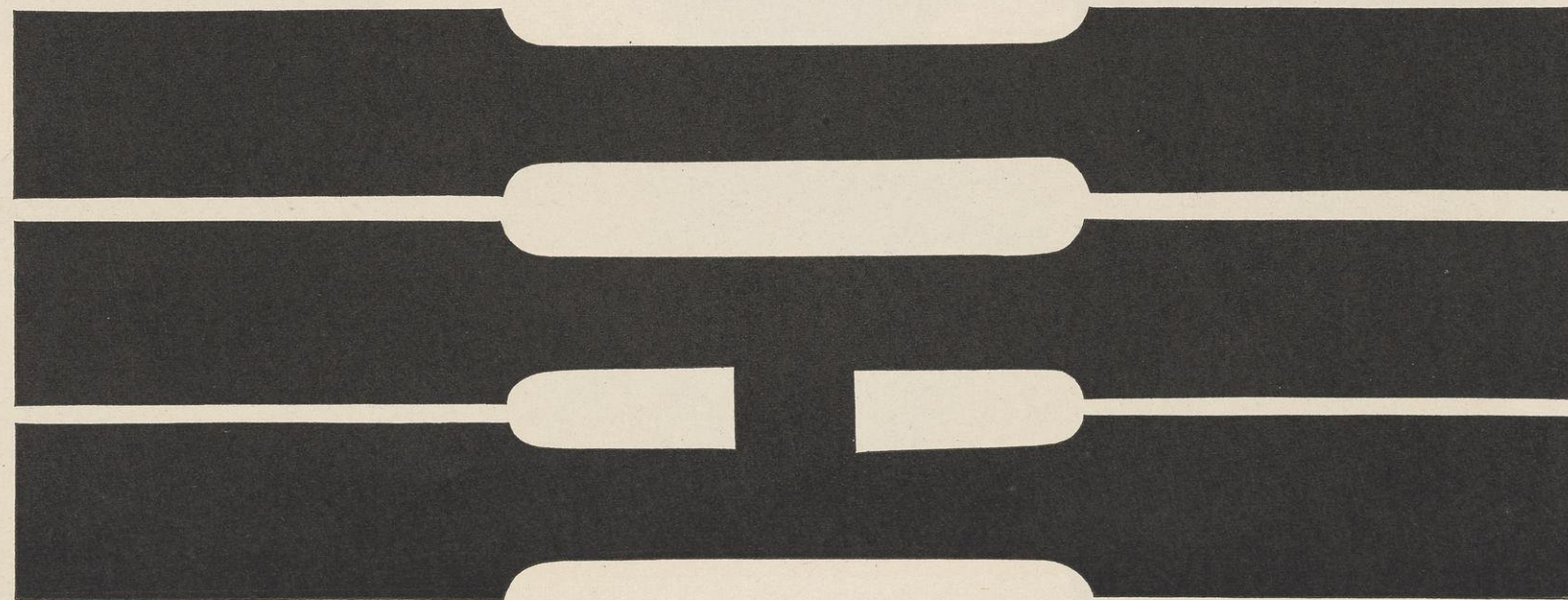


Type shown hereon—Caps, Lower Case and Figures—  
supplied in any size desired up to 100 line.

Fifty Line



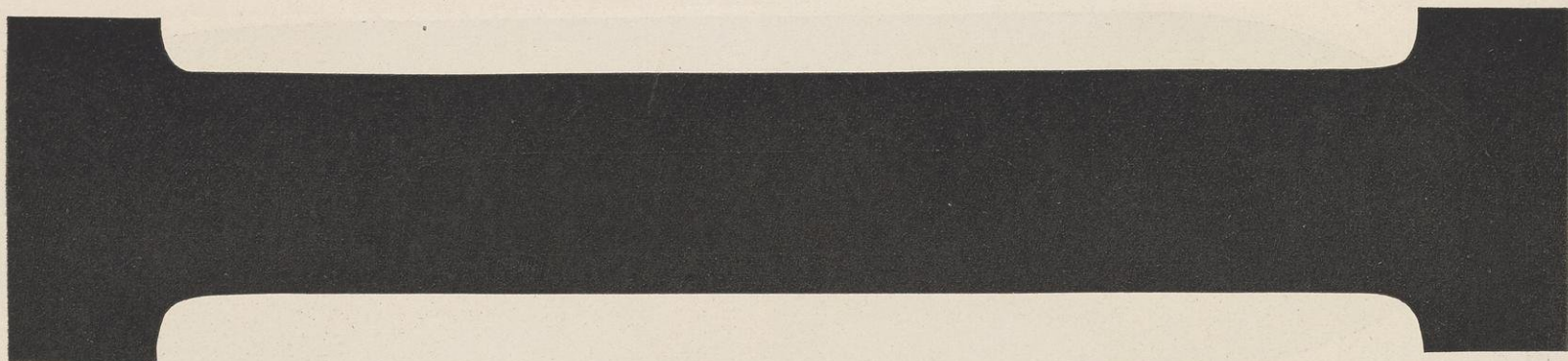
No. 95—Class N



Larger or smaller sizes increase or decrease in exact proportion. Example: The 8 line size is exactly twice as high, twice as wide, and the stems twice as heavy as the same design in 4 line.



Fifty Line

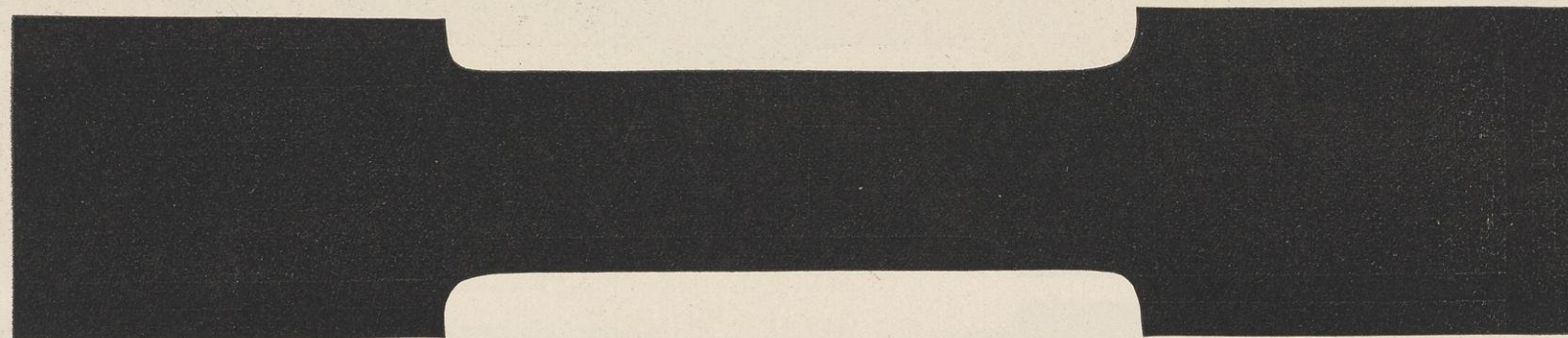


No. 152—Class M



Type shown hereon—Caps, Lower Case and Figures—  
supplied in any size desired up to 100 line.

Fifty Line



No. 5025—Class N

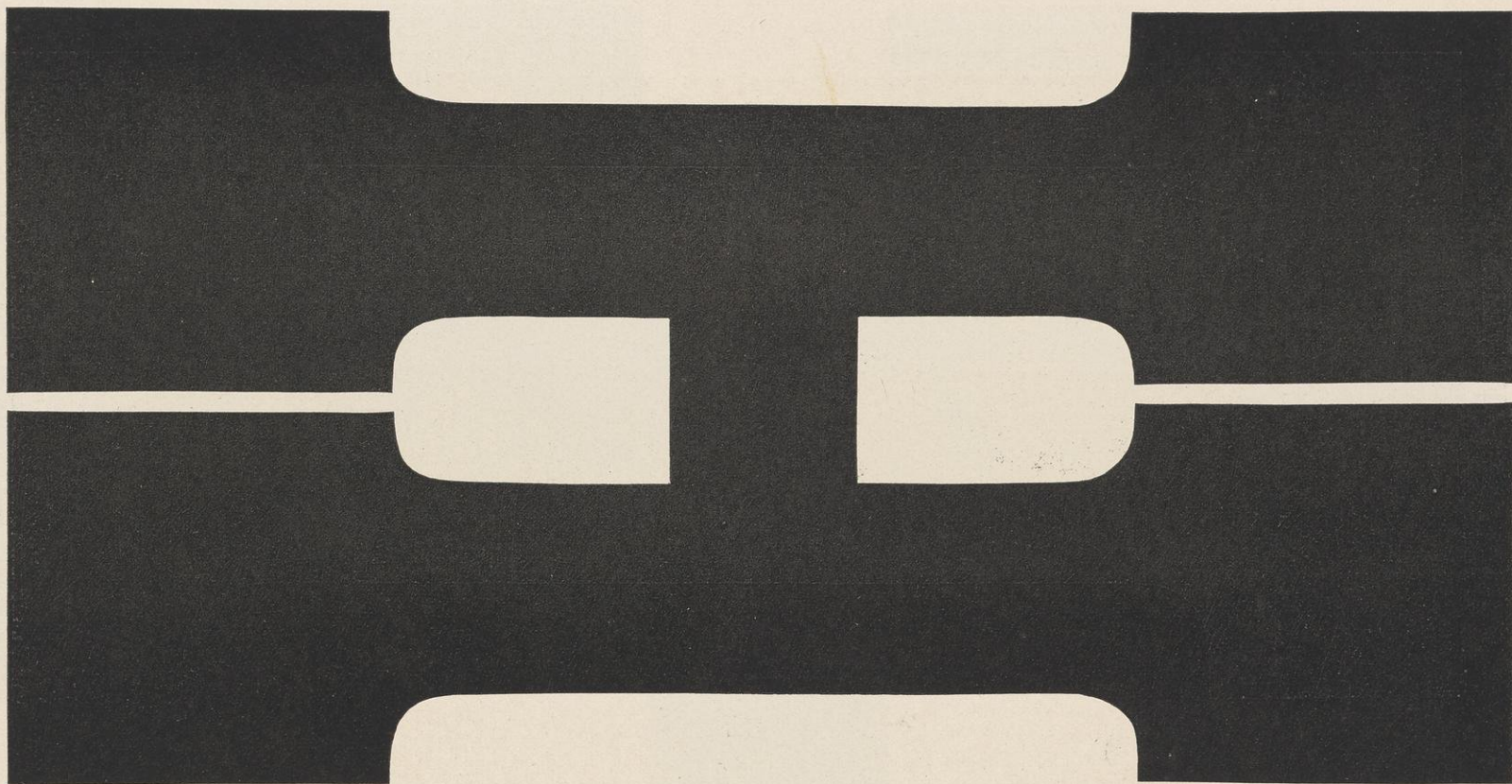


Larger or smaller sizes increase or decrease in exact proportion. Example: The 8 line size is exactly twice as high, twice as wide, and the stems twice as heavy as the same design in 4 line.



Fifty Line

No. 154—Class N



Type shown hereon—Caps, Lower Case and Figures—  
supplied in any size desired up to 100 line.

Fifty Line

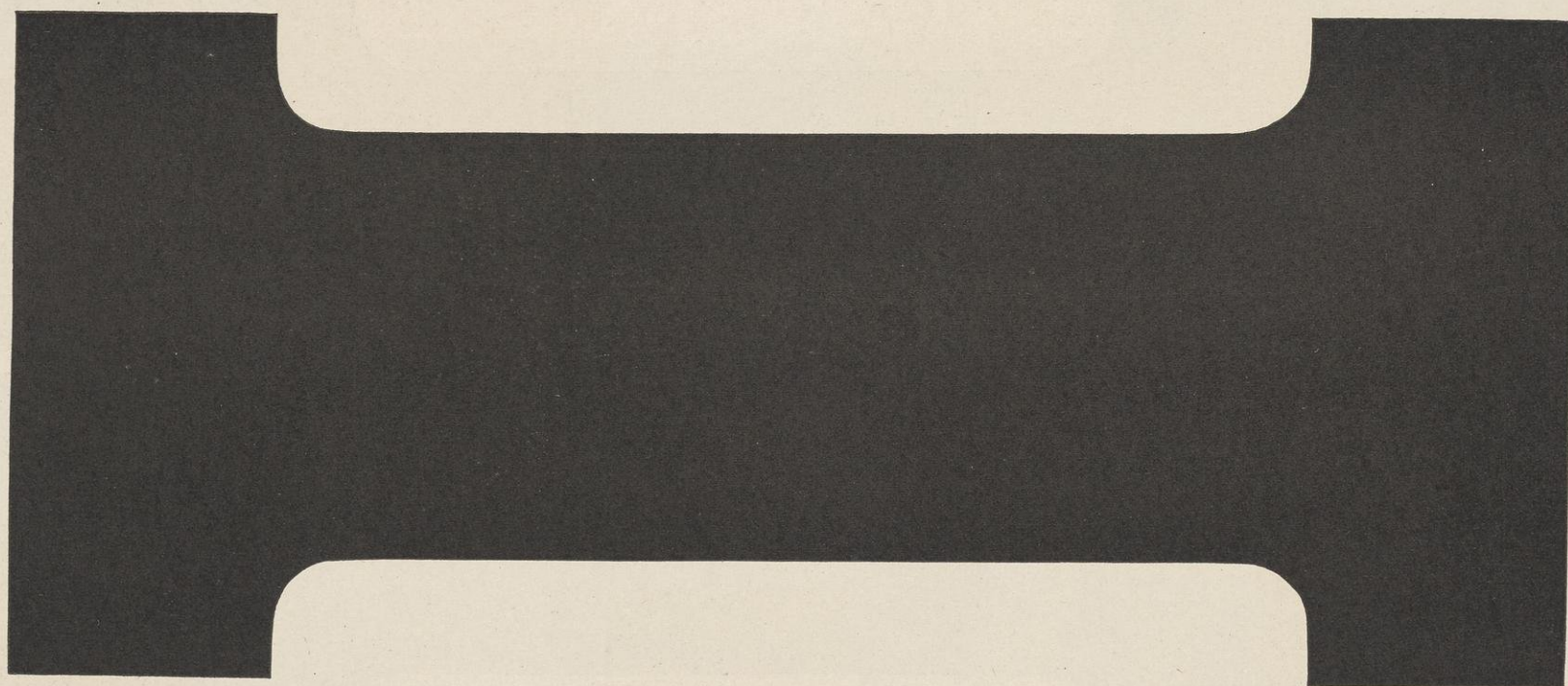
No. 5029—Class N



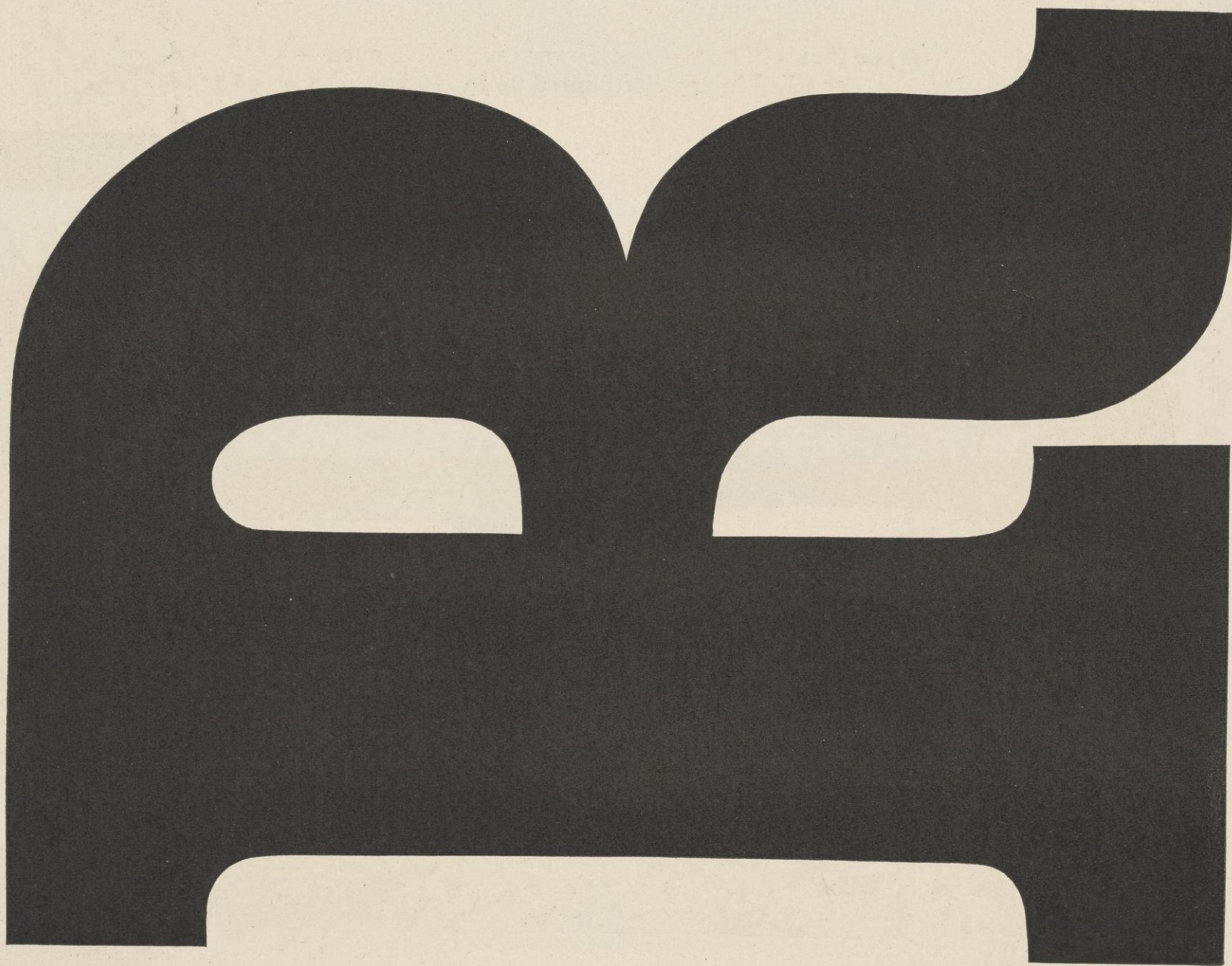
Larger or smaller sizes increase or decrease in exact proportion. Example: The 8 line size is exactly twice as high, twice as wide, and the stems twice as heavy as the same design in 4 line.



Fifty Line



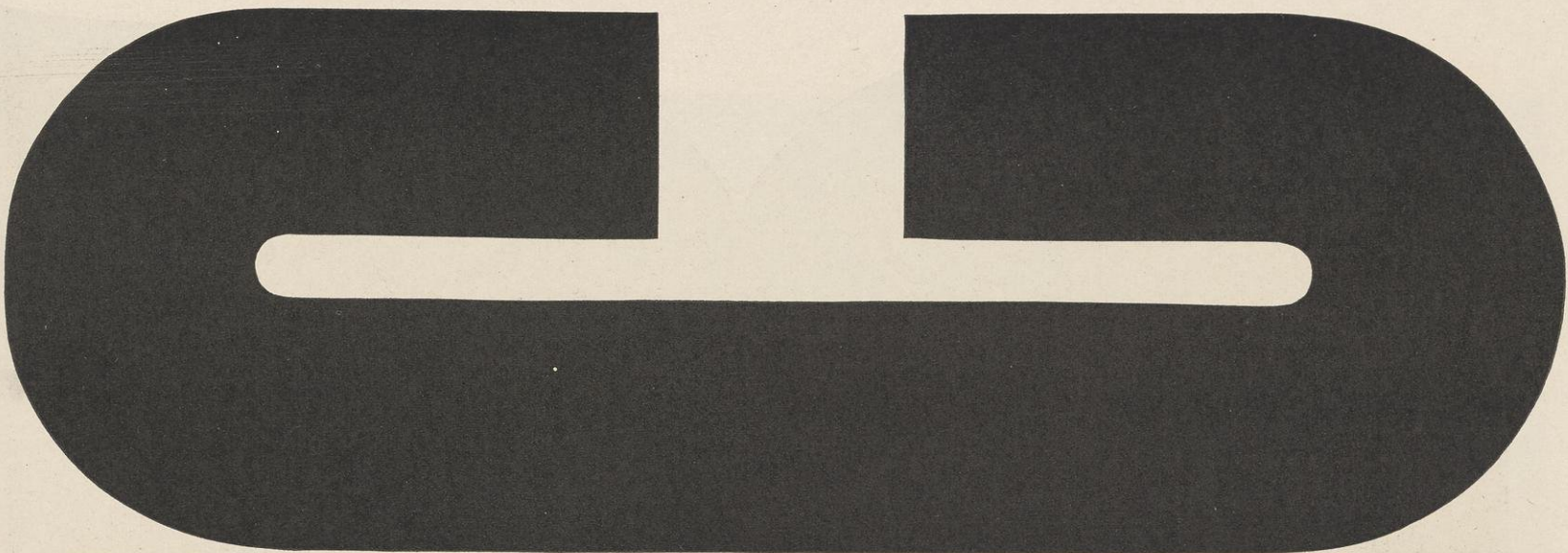
No. 10—Class N



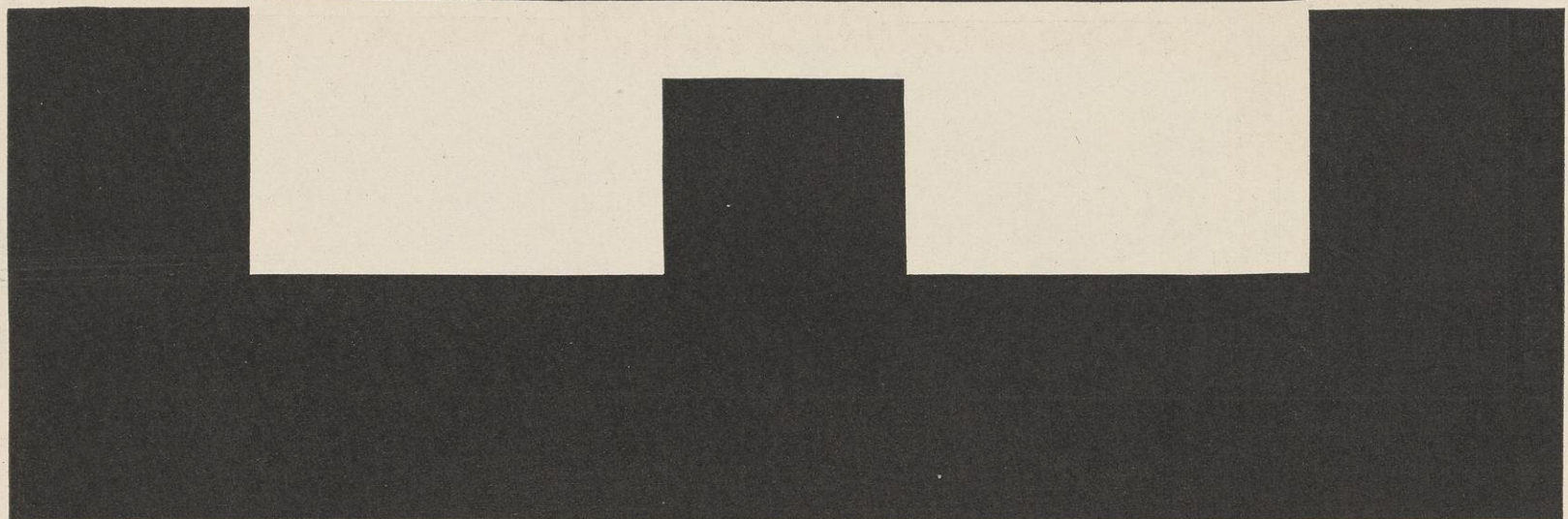
Larger or smaller sizes increase or decrease in exact proportion. Example: The 8 line size is exactly twice as high, twice as wide, and the stems twice as heavy as the same design in 4 line.



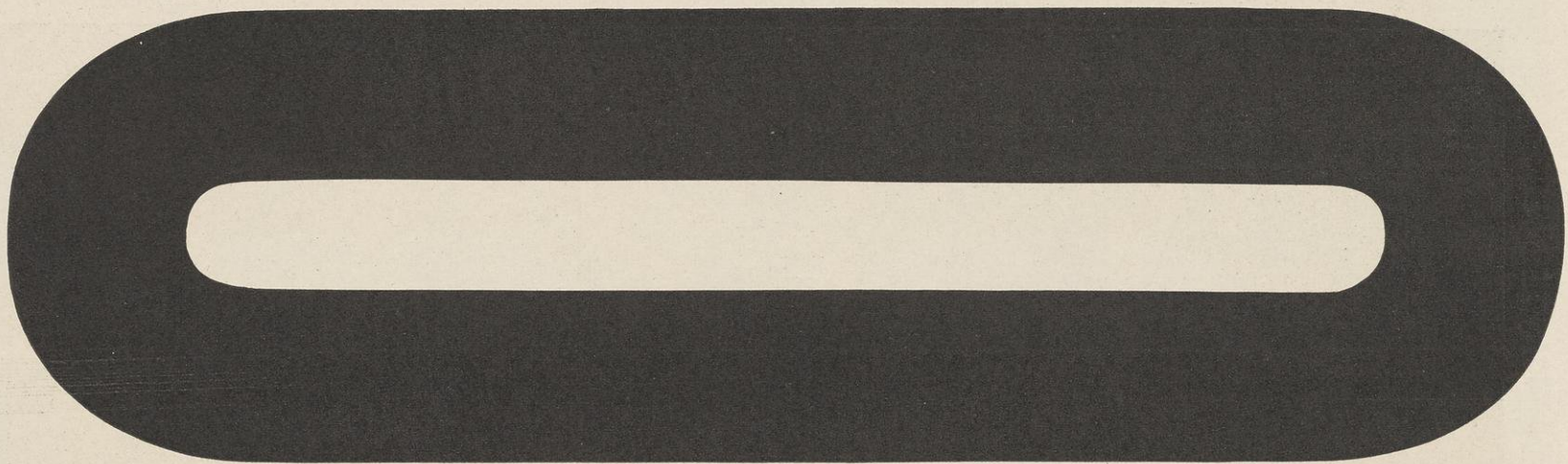
Fifty Line



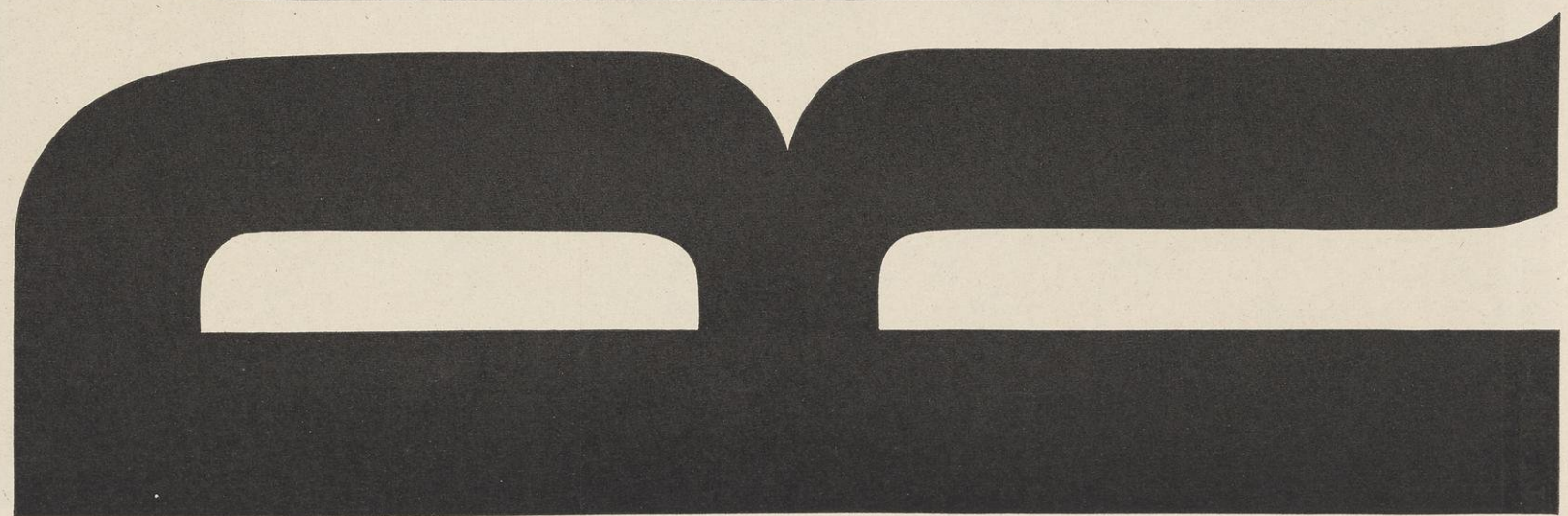
No. 266—Class L



Fifty Line



No. 81—Class L

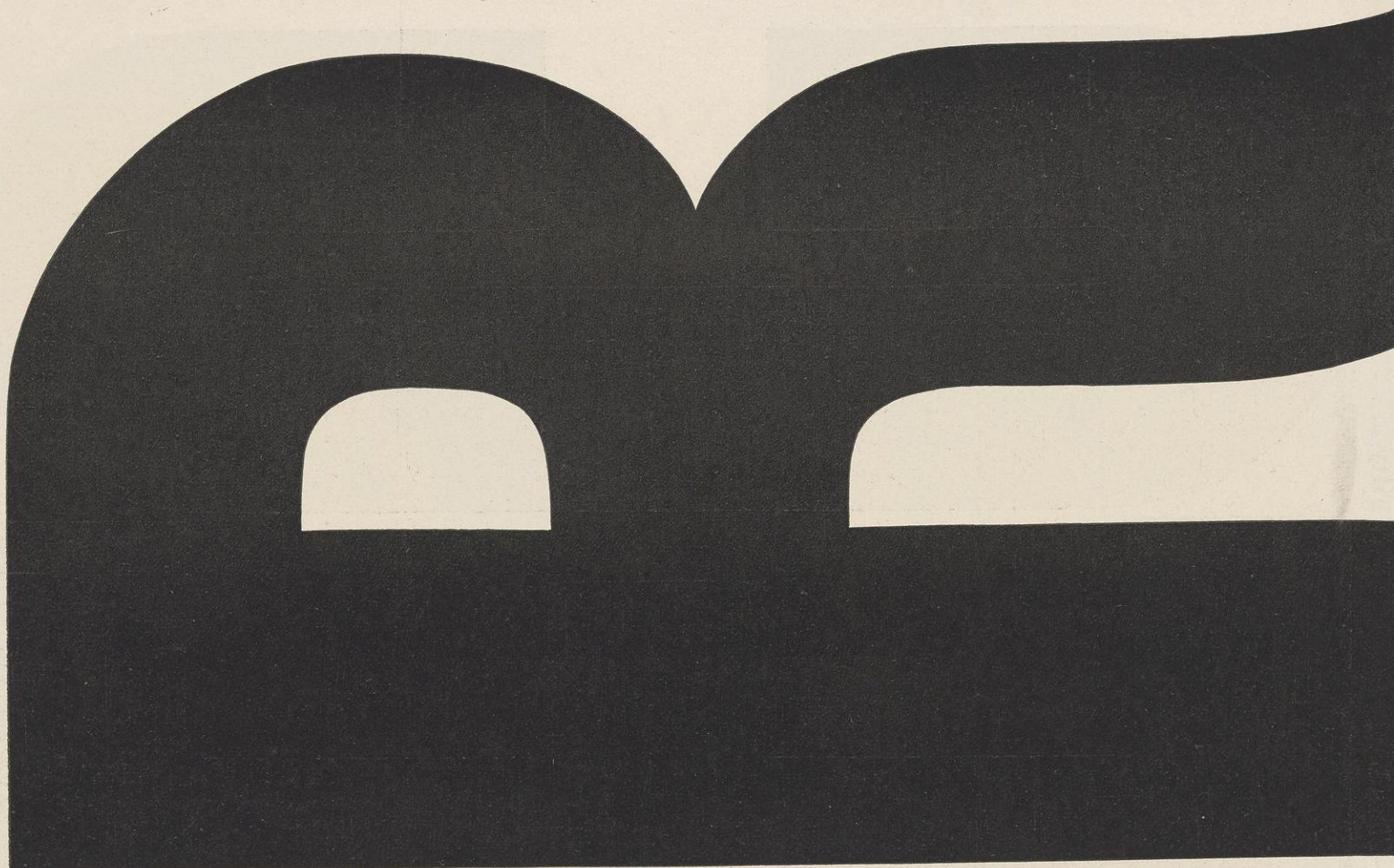


Larger or smaller sizes increase or decrease in exact proportion. Example: The 8 line size is exactly twice as high, twice as wide, and the stems twice as heavy as the same design in 4 line.



Fifty Line

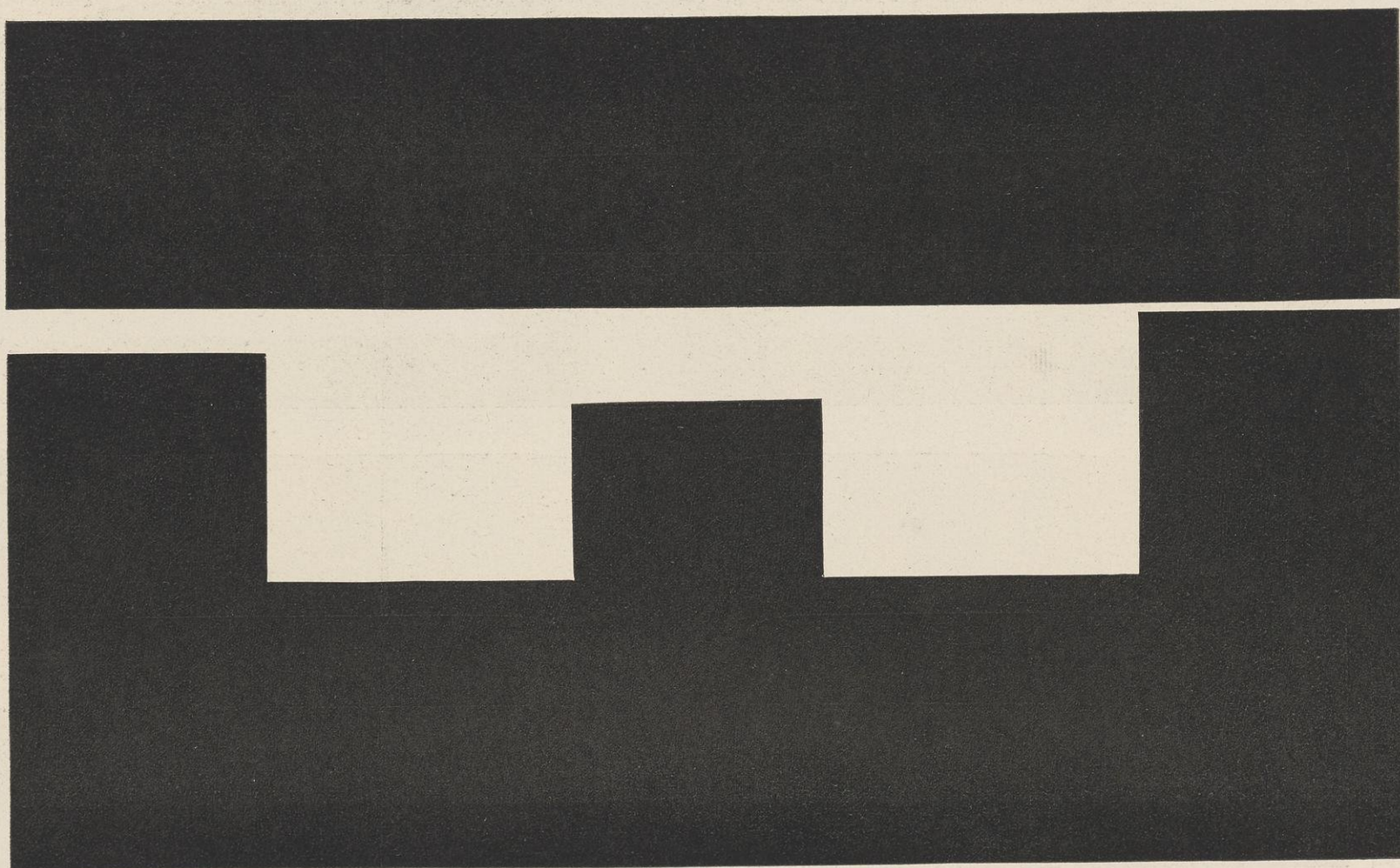
No. 4045—Class M



Type shown hereon—Caps, Lower Case and Figures—  
supplied in any size desired up to 100 line.

Fifty Line

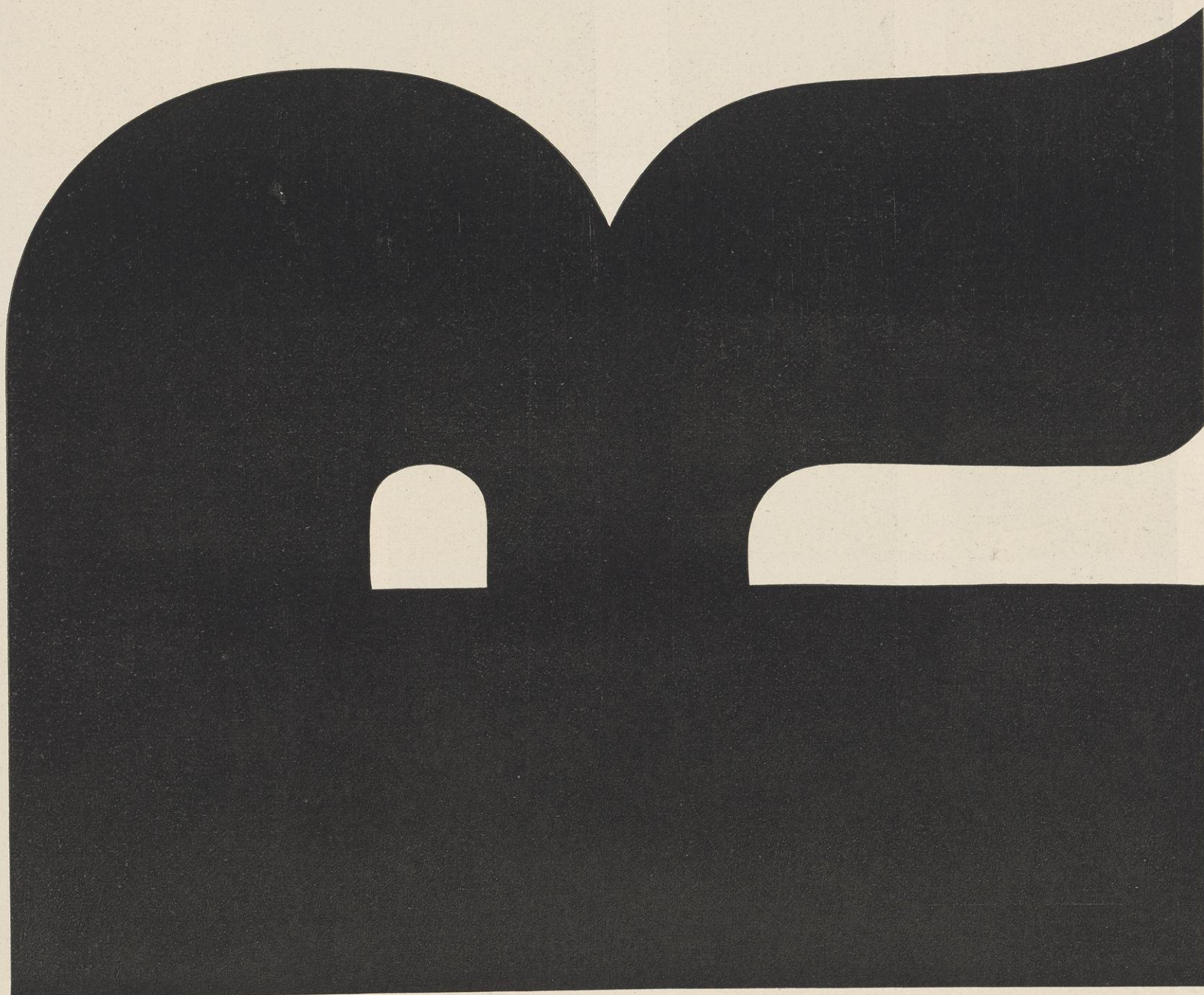
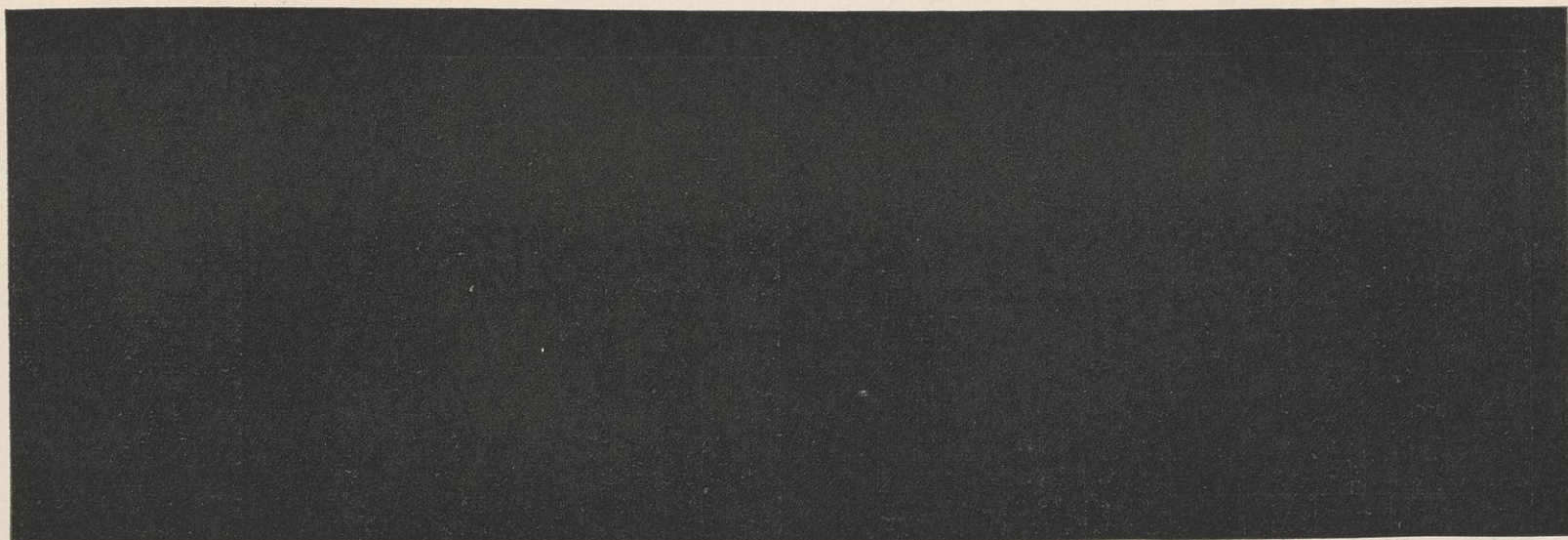
No. 4050—Class L



Larger or smaller sizes increase or decrease in exact proportion. Example: The 8 line size is exactly twice as high, twice as wide, and the stems twice as heavy as the same design in 4 line.



Fifty Line



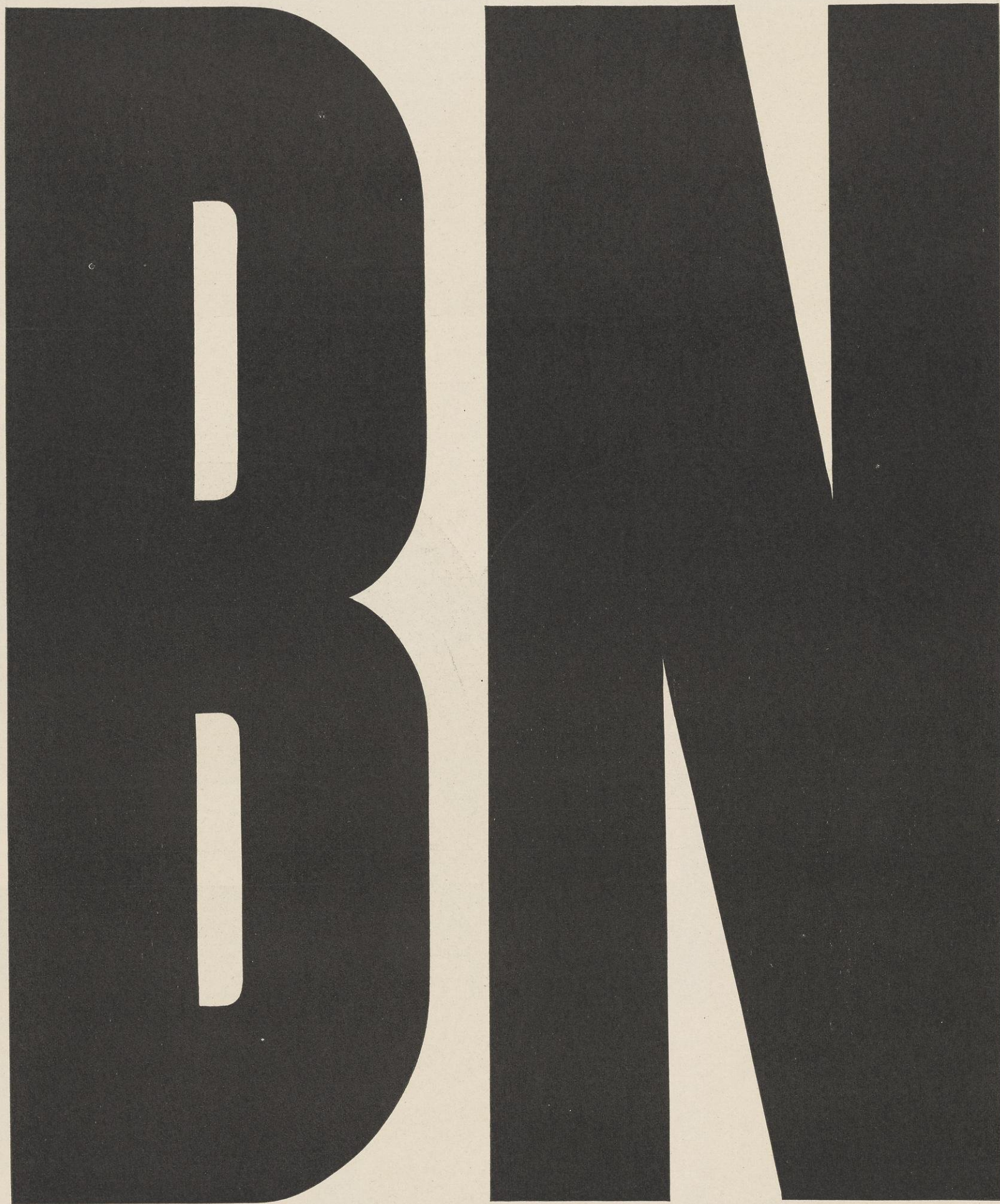
No. 5072—Class O

Larger or smaller sizes increase or decrease in exact proportion. Example: The 8 line size is exactly twice as high, twice as wide, and the stems twice as heavy as the same design in 4 line.



No. 266—Class L

Sixty Line



Larger or smaller sizes increase or decrease in exact proportion. Example: The 8 line size is exactly twice as high, twice as wide, and the stems twice as heavy as the same design in 4 line.



No. 4050—Class L

Sixty Line

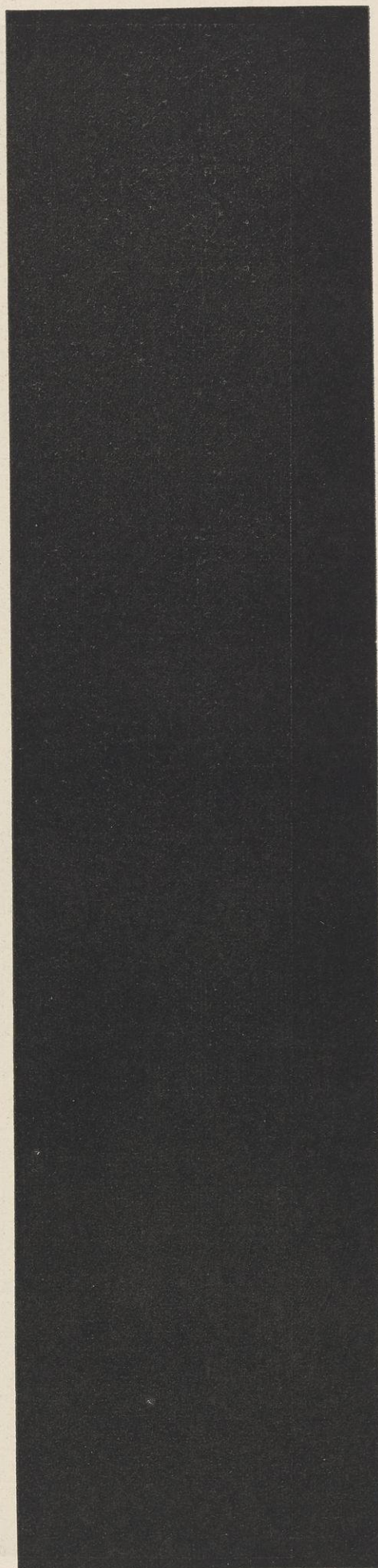


Larger or smaller sizes increase or decrease in exact proportion. Example: The 8 line size is exactly twice as high, twice as wide, and the stems twice as heavy as the same design in 4 line.



No. 4045—Class M

Sixty Line



Larger or smaller sizes increase or decrease in exact proportion. Example: The 8 line size is exactly twice as high, twice as wide, and the stems twice as heavy as the same design in 4 line.



No. 24—Class N

Sixty Line



Larger or smaller sizes increase or decrease in exact proportion. Example: The 8 line size is exactly twice as high, twice as wide, and the stems twice as heavy as the same design in 4 line.



No. 5032—Class N

Sixty Line



Larger or smaller sizes increase or decrease in exact proportion. Example: The 8 line size is exactly twice as high, twice as wide, and the stems twice as heavy as the same design in 4 line.



WOOD TYPE

Manufactured by Hamilton Mfg. Co.

Two Rivers, Wis.

No. 10—Class N

Sixty Line



Larger or smaller sizes increase or decrease in exact proportion. Example: The 8 line size is exactly twice as high, twice as wide, and the stems twice as heavy as the same design in 4 line.



WOOD TYPE

Manufactured by Hamilton Mfg. Co.

Two Rivers, Wis.

No. 779—Class 0

Sixty Line



Larger or smaller sizes increase or decrease in exact proportion. Example: The 8 line size is exactly twice as high, twice as wide, and the stems twice as heavy as the same design in 4 line.



WOOD TYPE

Manufactured by Hamilton Mfg. Co.

Two Rivers, Wis.

No. 81—Class L

Seventy-two Line

BRN



WOOD TYPE

Manufactured by Hamilton Mfg. Co.

Two Rivers, Wis.

No. 266—Class L

Seventy-two Line

R

E



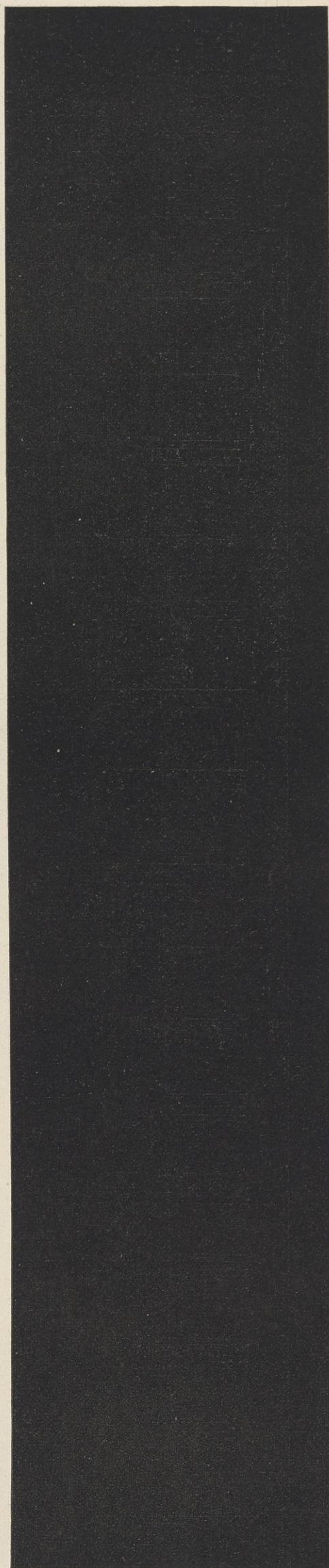
WOOD TYPE

Manufactured by Hamilton Mfg. Co.

Two Rivers, Wis.

No. 4050—Class L

Seventy-two Line





WOOD TYPE

Manufactured by Hamilton Mfg. Co.

Two Rivers, Wis.

No. 6011—Class M

Seventy-two Line





WOOD TYPE

Manufactured by Hamilton Mfg. Co.

Two Rivers, Wis.

No. 95—Class N

Seventy-two Line

W H B



WOOD TYPE

Manufactured by **Hamilton Mfg. Co.**

Two Rivers, Wis.

No. 24—Class N

Seventy-two Line





WOOD TYPE

Manufactured by Hamilton Mfg. Co.

Two Rivers, Wis.

No. 152—Class M

Seventy-two Line

DI



WOOD TYPE

Manufactured by Hamilton Mfg. Co.

Two Rivers, Wis.

No. 5032—Class N

Seventy-two Line

