



# LIBRARIES

UNIVERSITY OF WISCONSIN-MADISON

## **Site 1225: Lone Rock, Richland County, Township 8N, Range 2E, Section 11. 1954-08**

[s.l.]: [s.n.], 1954-08

<https://digital.library.wisc.edu/1711.dl/GOGN64NS53V658K>

This material may be protected by copyright law (Title 17, US Code).

For information on re-use see:

<http://digital.library.wisc.edu/1711.dl/Copyright>

The libraries provide public access to a wide range of material, including online exhibits, digitized collections, archival finding aids, our catalog, online articles, and a growing range of materials in many media.

When possible, we provide rights information in catalog records, finding aids, and other metadata that accompanies collections or items. However, it is always the user's obligation to evaluate copyright and rights issues in light of their own use.

STAND RECORD

FORESTS

Stand No. 1225  
= 4121

Name: Lone Rock  
County: Richland  
Date: August, 1954  
Size of Stand: 40+ acres  
Forest Type: Flood plain hardwoods  
Topography: bottomland series of low ridges

Locality:  
T: 8 N R: 2 E Sec: 11 NW SW  
Observers: Bray

Size of Area Sampled: 15  
Soil Type:  
Slope: none Directions

Condition of Stand:

Open Grown Trees:

% Canopy:

Stumps:

- |    |    |    |     |
|----|----|----|-----|
| 1. | 4. | 7. | 10. |
| 2. | 5. | 8. | 11. |
| 3. | 6. | 9. | 12. |

Soil Data:

	pH	N	P	K	Ca	Mg	Org. Mat.	Colloids	W.H.C.
A <sub>0</sub>									
A <sub>1</sub>									
A <sub>2</sub>									
B									

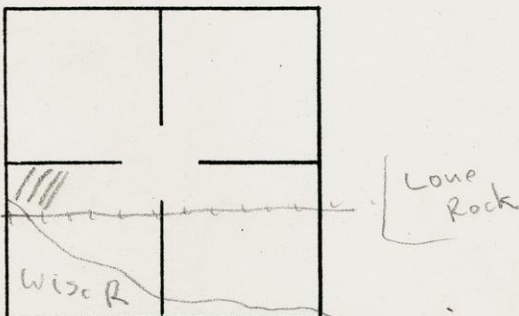
DEPTH

CHARACTERISTICS (Color, Texture, Structure, etc.)

A <sub>0</sub>	-----
A <sub>1</sub>	-----
A <sub>2</sub>	-----
B	-----

Parent Material:

Map:



STATION NO.	1	2	3	4	5	6	7	8	9	10
Acer negundo										
A. saccharinum						200	1	80 180		
A. saccharum										
Betula nigra										
Carya cordiformis			2	4	4	2	20	1	1	60 120 35
Celtis occident.										
Crataegus sp.										
Fraxinus americ.										
F. nigra										
F. pennsylvanica						70		1		
Gleditsia triacan.										
Gymnocladus dioica										
Juglans cinerea										
Platanus occident.										
Populus deltoides										
P. tremuloides										
Prunus serotina										
Quercus bicolor	68	110 70		90	180 200			100 20	250 3	3 4
Q. rubra										
Robinia pseudo.										
Salix nigra										
Tilia americana										
Ulmus americana	70		60	85						110 130 160
U. rubra										
U. vel							1			
Distance	12	18	18	38	39	24	10½	15	36	27

Lone Rock  
Richland

4121

Data Form No. 39  
POINT RECORD TREES

Plant Ecology Research  
FLOOD-PLAIN HARDWOODS

Univ. of Wisconsin  
Stand No.

STATION NO.	1	2	3	4	5	6	7	8	9	10
Acer negundo										
A. saccharinum			1				30		130	
A. saccharum										
Betula nigra								340		
Carya cordiformis	1	30							25	
Celtis occidental.							1			
Crataegus sp.										
Fraxinus americ.										
F. nigra										
F. pensylvanica		1			30 15					100
Gleditsia triacan.										
Gymnocladus dioica										
Juglans cinerea										
Platanus occident.										
Populus deltoides										
P. tremuloides										
Prunus serotina										
Quercus bicolor	30	3	490	200 18	50 95	2	75 75	40	250	180
Q. rubra										
Robinia pseudo.										
Salix nigra										
Tilia americana										
Ulmus americana	500									
U. rubra										
Q vel										
Distance	27	36	9	6	15	13	14	35	21	45