



LIBRARIES

UNIVERSITY OF WISCONSIN-MADISON

Catalog of children's carriages. [19--?]

Hill Children's Carriage Factory
Sheboygan, Wisconsin: s.n., [19--?]

<https://digital.library.wisc.edu/1711.dl/C5SJYOVSQFH48L>

This material may be protected by copyright law (Title 17, US Code).

Original material owned by Mead Public Library.

For information on re-use see:

<http://digital.library.wisc.edu/1711.dl/Copyright>

The libraries provide public access to a wide range of material, including online exhibits, digitized collections, archival finding aids, our catalog, online articles, and a growing range of materials in many media.

When possible, we provide rights information in catalog records, finding aids, and other metadata that accompanies collections or items. However, it is always the user's obligation to evaluate copyright and rights issues in light of their own use.

SHEB 2FLR/REFERENCE

S R

684 H55

Hill Children's Carriage Factory (Sheboygan,
Catalog of children's carriages.



9000192984

BURKE-BLACKSTOCK



Express 1/5 24

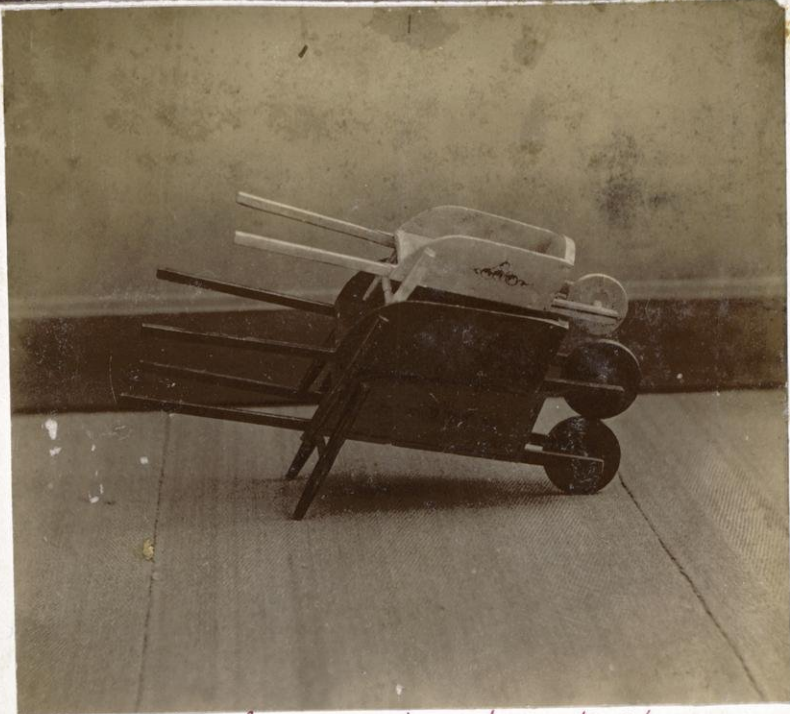


No 6 Large 4 12 x 24 body on axle & iron not out

- | | | | | | |
|------|-------|---|-----------------------------|------------------------|---------|
| No 1 | Small | 4 | Body 8 x 16 | wheels turn under body | c. iron |
| " 2 | Same | " | painted fancy colors | " " " | c. drum |
| " 1 | Large | " | 12 x 24 | " " " | c. drum |
| " 2 | Same | " | richly painted & ornamented | " " " | c. drum |
| " 3 | " | " | highly | or Iron axle | c. drum |
| " 4 | " | " | with seat | | c. drum |



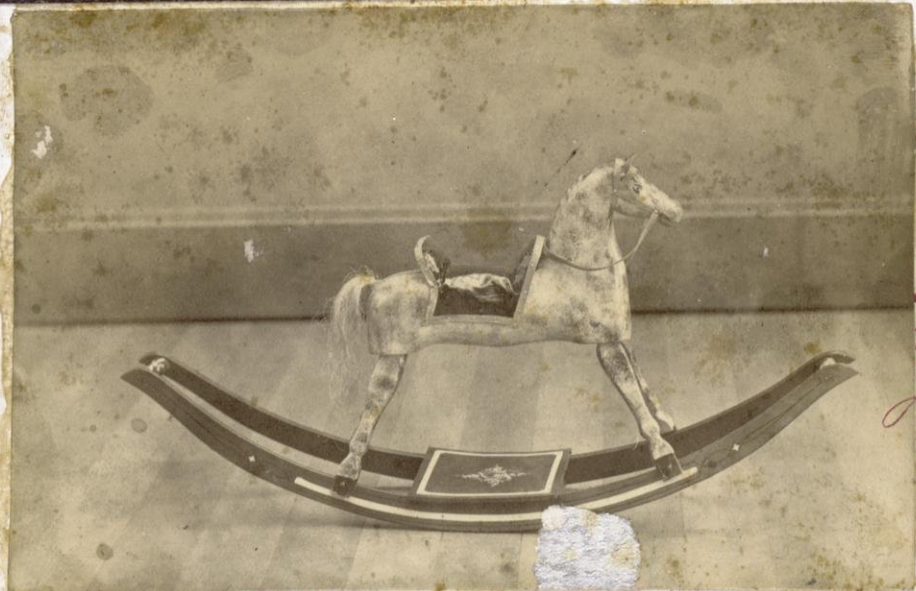
- | | | |
|------|-------------|---------|
| No 1 | Velocipedes | c. iron |
| " 2 | or | c. iron |
| " 3 | or | c. iron |



No 1 Boys Wheelbarrow 3 in nest by C. E. Linn

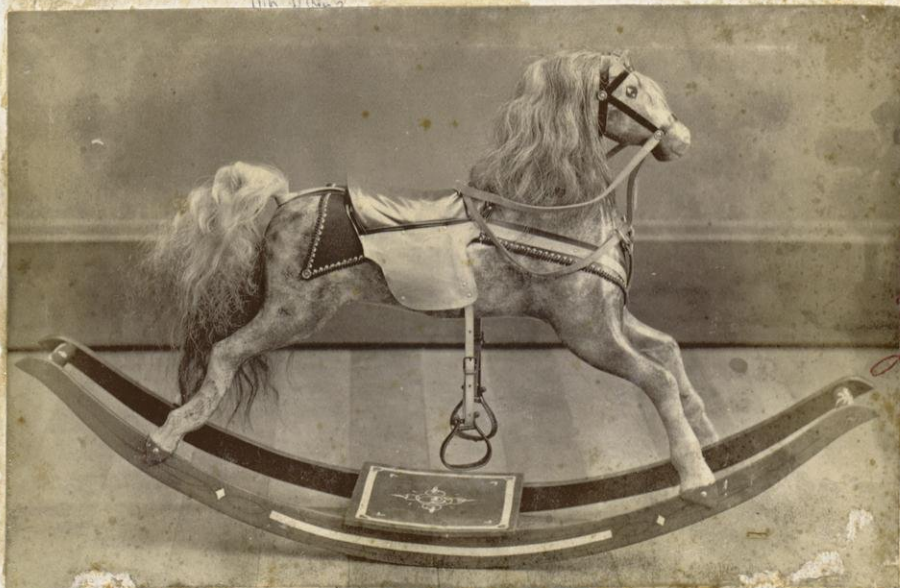


No 2 Boys Wheelbarrow by C. E. Linn
" 3 " " 50 fancy painted " C. E. Linn
C. E. Linn



Hand

no 1-5 x 5 block without mane or stirrups set a. to
 " 2-5 x 5 " with " and or c. done
 " 3-6 x 6 " " " " or c. done
 " 4-6 x 6 " " " " or leather saddle & dao



Hand

no 5 block 6 x 6 carved legs a. iio
 " 6 " 7 x 7 " set nicely trimmed c. from
 " 7 " 8 x 8 " " leather saddle c. hand
 " 8 " 10 x 10 " " " " c. man



No. 5, 2, 2, 2, 2, 2

5. ~~man~~ - Ctr Eng Body Cripsey frame body resting on leather strap
24 inch wheels



No. 8 - turn
 " 7 - am

- # 8. turn - mlu C. spring front S shape in rear tempered steel, En Cloth improved cut under Phaeton. caps wheels 2 joint
- # 7. am - omu Single joint. En Cloth



No 11 - sun
1172 - con

11. sun - all new Phaeton. in cloth
10 con - all = = = = = Larry back



#23 - dtm
#22 - dmm

+ 1/6⁰⁰

#23 - dtm - dtm scroll Phetou all wool Brussels mat
#22 - dmm - dmm for Rail damasks - Long back



15-00

no
19 c dtun
18 s. down
17 c. dtun
all Lacy

19 dtun - dtun Engraised Panel wool Rep
 # 18 down - dtun Rep or Terry
 # 17 dtun - dtun En Cloth



reach half way
to spring
No 11 1/2 dtum

18⁰⁰

11 1/2 curved Phaeton raised Panels, wool rep or Sattlen Pipe Rolls
c, dtum - dtum full Plate throughout



no
20 - c darrin

20 darrin - darrin style no 21 wool rep or satteen no lamps
 plated foot rail top lined merino or empress
 silver plated mountings



No.
21 - dtum

21 dtum - Allia scroll Body nearly like # 28
 " double C. Spring half elliptic front



✓
Tory
70
42 - d'tun
41 - d'mun
en cloche

Twin No. 28 c. p. m. m.



Raised panel, all wool,
 - - Terry
 - - En Cloth

○ Rem C. from C. W. M. C. Assn
 45-44-48



© *Tram a. p. m.* 45-44-43 *St. Louis*



royl ✓

same as

35 - iron - damon Bent Rep, Terry, Pipe Rolls plated side, + foot Rail
handles by means of hook
Poussels not ornam



✓
m - 2.0000
37 - 2.0000
36 - 2.0000
35 - 2.0000

36 Ioun - iun. Reub. P. pipe Polly plated Mountings double C. S. + 1/2 eliph
4 37 soun - iun Pipe Polly silk, Satin plated throughout top lined silk, covered
handles with loop (with feather)



onyh
- jh

70
31 c. tonyh
34 c. ioyh
29 c. iinn

29 iinn - damn Bent Terry Lazy Back Brussels Mat for rail
four cov Bow & padded & lined alpaca cov in cloth
full plated joints



1/2
my

28 'lum - deir Bent Rep Torrey Rolls covered 1800s richly painted
Plated Rail + dash²⁶ padded top
Bent in lady back

no 28-27-28
oam in 28

any



8. TRK.
28 - illum
27 - illum
26 - illum

27 illum - damn wool Kap Pipe, Biscuit Bone covered plated tips
caps + bands lights in side + rear full lined
Bent Body in Lory. Books



26 imm - dunn Bent Terry Pipe Rolls other wise same as # 27
Bent wooden back²⁶ o



Phaeton
No
40 c poun
Silk
Rent top
Pat leather
39 - c poun
up all wool
38. 10mm
up Terry

40. poun -

39 - poun -

38 10mm



S. BIK
No
19 - c dlin
18 - c down
17 - c dlin

19 dlin - dlin English raised Panel wool rep handles screws
18 down - dlin - - - - - for rep or Terry
17 dlin - dlin - - - - - En Cloth



No
25 - down
24 - down

25 down - down scroll Pheaton, raised panel wool rep, Sateen
24 down - down Rep or Terry Pipe Rolls Brussels Mat no Lamps



stephens tot.

#16 - a. down
#15 - c. down

#16 down - drum English, Raised panel, wool goods, rail
 #15 down - drum ^{Padded top} ~~Ferry~~ - no lanterns



No 14 - dprun

14 dprun - dully Raised Panels En Cloth Rolls Carpet Mat
platted rail caps & bands on hub



14 - dpmu

14 - dpmu - dulu same as of -



3 pics

- # 31 Lion - Lion Phaeton style (Reut) silk, mohair plush, velvet mat
leather on bows silk, merino lined,
- # 30 Lion - Lion Rep, Satten, rail on dash, full plated joints, tips, & bands



50
51
52

stopped
- down
- down
- lunch top



No. 49 - *dean*
enamel



X

void

c. d. m. w.

+

320



no. 1 - lao
 " 2 om
 " 3 oon

1. c. lao - ptn Eu. cloth four bows, steel spring, tire oval shrunk on
 # 2. c. om - hwn Eu. cloth back + side curtains single joints gapped
 # 3. c. oon - Uu fancy Eu. cloth double joints C springs lights in curtains

0
33



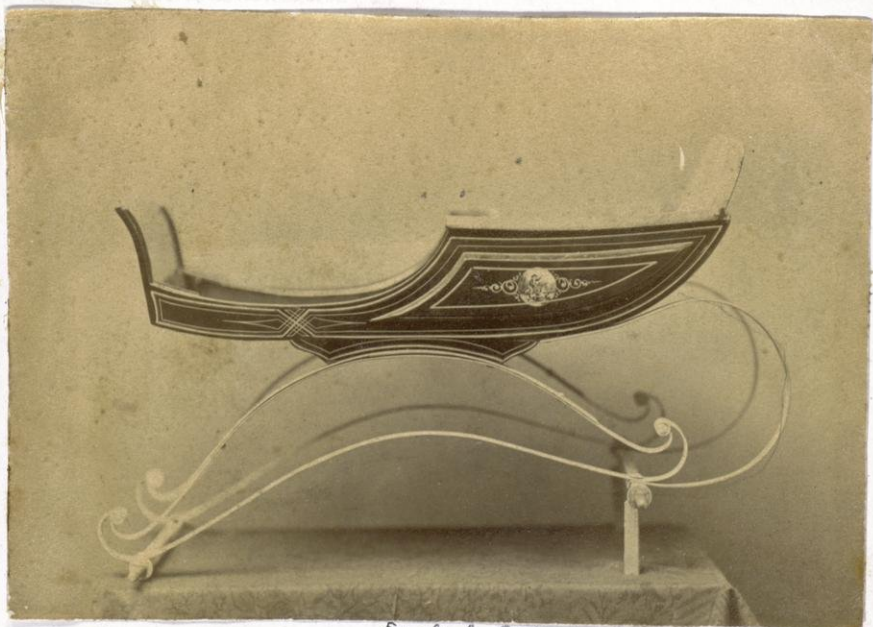
No. 4 - 7mm

4. c. mm - 1/2 in 3d wheel better finished double joints



no. 6 - a. arm

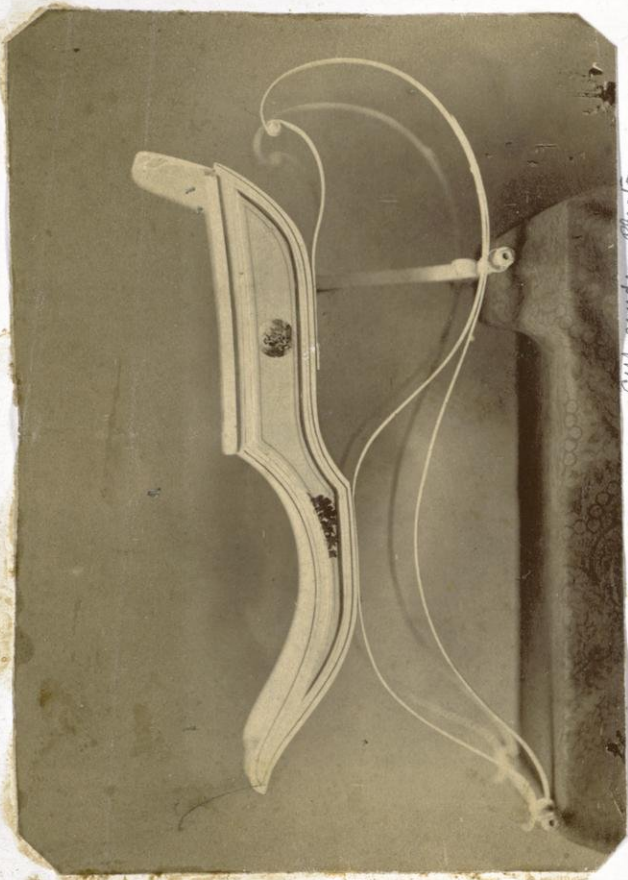
6. arm - omni Gipsy gear. bright double joints fancy en cloth



English Body

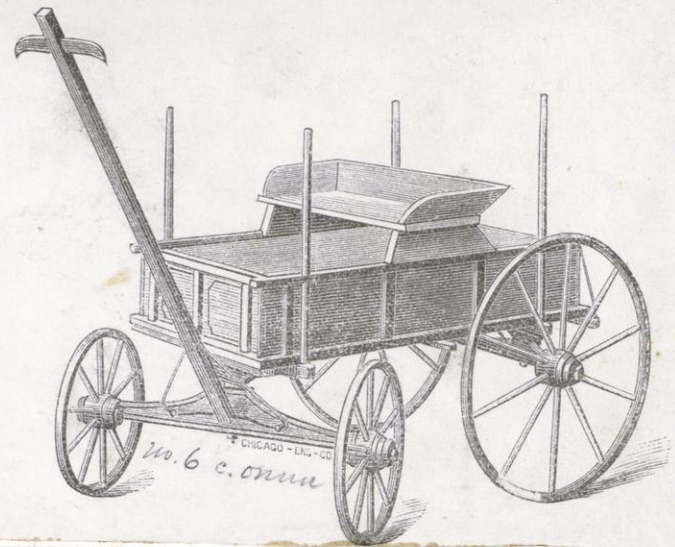


200. 1 - 2.
#180 / 200

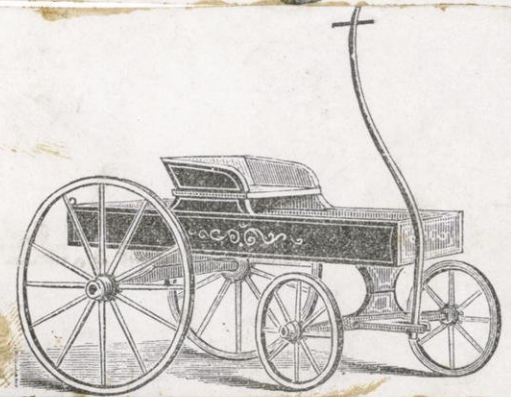


Cut under the seat

LARGE EXPRESS WAGON.



CHICAGO - ILL. - CO
No. 6 c. iron



No. 5 c. iron

36



2
no
10 1/2 - c. d. c. i. s.
with side rail
Se. top



Bracket Phantom
High arm

high arm
C. S. S.
L.
C. S. in rear

X oval



to not make

X road



No. 13 - e. d. p. m.
" 12 - e. d. i. m.

13 d. p. m. - date curved Phaeton Rep Rolls Brussels mat
12 d. i. m. - emu - - - - - Eu Cloth Rolls



OK

No. 9 - emm
" 8 1/2 - dunn

- # 9. emm - an Phaeton. stuffed. double points. En Cloth richly Striped
- # 8 1/2 dunn - tm Lammal or ref. bright points, tips. full Stuffed top

A

S
R
684
H55
c.1

DO NOT CIRCULATE

601

192984

MEAD PUBLIC LIBRARY
SHEBOYGAN, WISCONSIN

