



LIBRARIES

UNIVERSITY OF WISCONSIN-MADISON

Gentle Annie.

Foster, Stephen Collins, 1826-1864; Foster, Stephen Collins,
1826-1864

New York: Firth, Pond & Co. (547 Broadway), 1856

<https://digital.library.wisc.edu/1711.dl/LICIRZRBHOR6L8Z>

<http://rightsstatements.org/vocab/NKC/1.0/>

The libraries provide public access to a wide range of material, including online exhibits, digitized collections, archival finding aids, our catalog, online articles, and a growing range of materials in many media.

When possible, we provide rights information in catalog records, finding aids, and other metadata that accompanies collections or items. However, it is always the user's obligation to evaluate copyright and rights issues in light of their own use.

MUSIC DEALER,
MADISON, WIS.



FOSTER'S MELODIES
No. 31.

GENTLE ANNIE

Ballad

Written and Composed by

STEPHEN C. FOSTER.

Author of
THE VILLAGE MAIDEN & C. C.

PIANO

GUITAR.

NEW YORK
PUBLISHED BY FIRTH, POND & CO. 547 BROADWAY.

2c

Pittsburgh.
H. KLEBER & BRO.

Albany.
J. H. HIDLEY.

Buffalo.
J. SAGE & SONS

Cleveland.
S. BRAINARD & CO.

St. Louis.
H. PILCHER & SONS.

Wakarusa

Entered according to Act of Congress in 1856 by Firth, Pond & Co. in the Clerk Office of the District Court of the S. D. of N. Y.

GENTLE ANNIE.

3

WRITTEN AND COMPOSED BY S.C. FOSTER.

Andante mosso.

Thou wilt come no more, gen_tle An_nie, Like a
flower thy spi_rit did de_part; Thou art gone, a__las! like the
many That have bloomed in the summer of my heart.

Entd according to Act of Congress AD 1856 by Firth Pond & C^o in the Clerk's Office of the Dis't Court of the South'n District of N.Y.

CHORUS.

Shall we ne-ver more be-hold thee; ne-ver hear thy winning voice a-

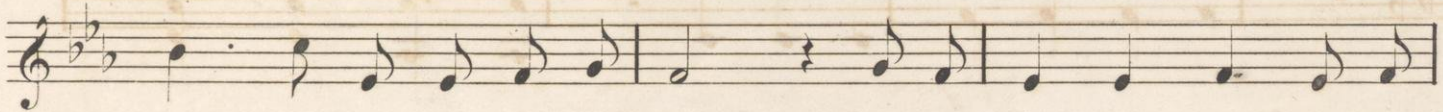
-gain - When the Spring time comes, gen-tle An-nie, When the

wild flowers are scattered o'er the plain?

SECOND VERSE.



We have roamed and loved mid the bow_ers When thy



dow_ _ ny cheeks were in their bloom; Now I stand a_ _ lone mid the

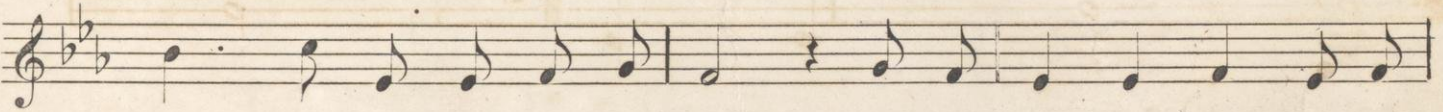


flow_ers While they min_ _ gle their per_ _ fumes o'er thy tomb. *Chorus.*

THIRD VERSE.



Ah! the hours grow sad while I pon_ _ der Near the



si_ _ lent spot where thou art laid, And my heart bows down when I



wan_ _ der By the streams and the mea_ _ dows where we strayed. *Chorus.*