



**LIBRARIES**  
UNIVERSITY OF WISCONSIN - MADISON

## **Cedars-Sinai Medical Center advertisement.**

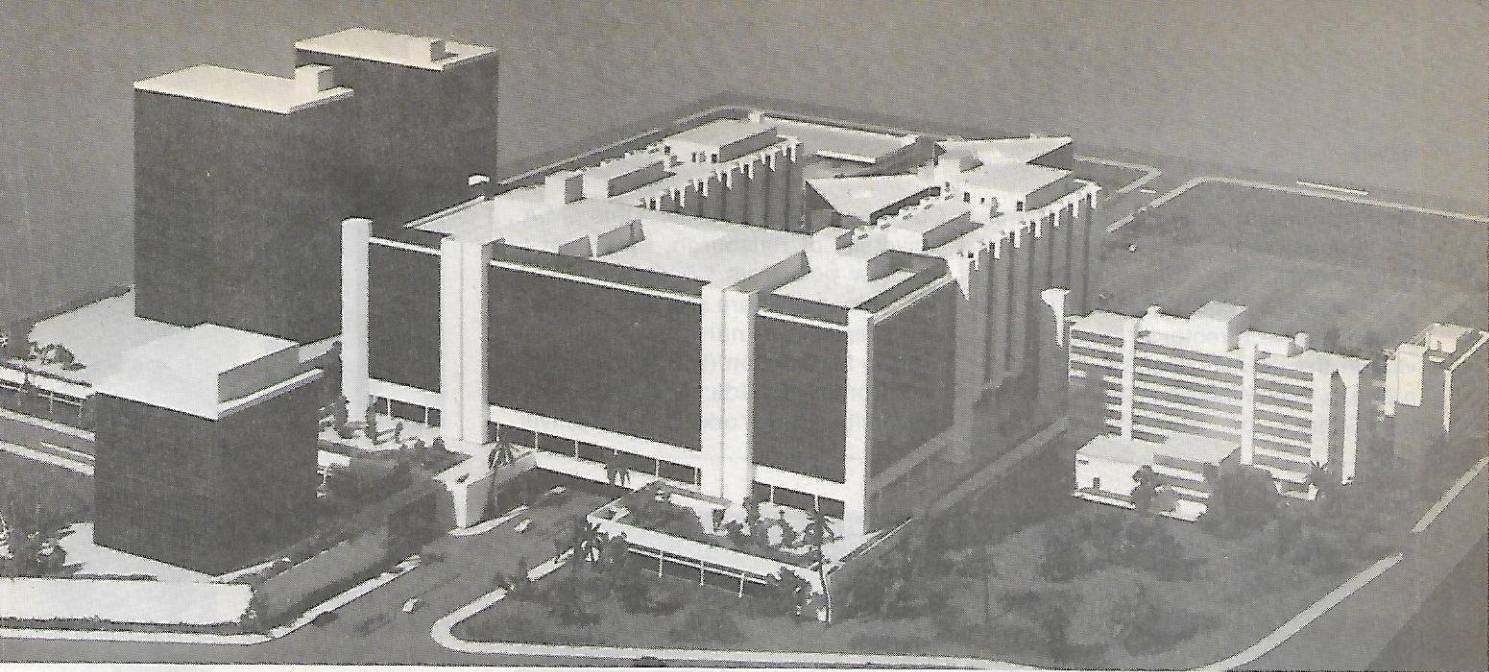
[s.l.]: [s.n.], 1975

<https://digital.library.wisc.edu/1711.dl/D2BWS3RQKIGAX9B>

<http://rightsstatements.org/vocab/InC/1.0/>

The libraries provide public access to a wide range of material, including online exhibits, digitized collections, archival finding aids, our catalog, online articles, and a growing range of materials in many media.

When possible, we provide rights information in catalog records, finding aids, and other metadata that accompanies collections or items. However, it is always the user's obligation to evaluate copyright and rights issues in light of their own use.



# Our new Medical Center— a body of steel, but it needs your heart of gold.

Cedars-Sinai has been expanding so rapidly that we're building  
a whole new medical complex.

Now we need nurses to help fill those facilities. Nurses who will  
bring us the experience, professionalism, dedication and  
compassion every hospital needs.

We offer you the chance to work and learn with a large,  
dedicated staff in one of the world's foremost teaching hospitals.

You will go through a detailed orientation program and  
continue to grow professionally through our comprehensive  
inservice education program.

There is another benefit we have that few other hospitals can  
match. For your free time—Los Angeles, California.

Join Cedars-Sinai NOW! Ask about our air transportation and  
tuition aid plans.



An Equal Opportunity Employer.



Sally Rush, Coordinator of Nurse Recruitment  
**CEDARS-SINAI MEDICAL CENTER**  
P.O. Box 54265, Los Angeles, Calif. 90054

Name \_\_\_\_\_

Address \_\_\_\_\_

City \_\_\_\_\_ State \_\_\_\_\_ Zip \_\_\_\_\_

Nursing School \_\_\_\_\_ Yr. Graduated \_\_\_\_\_