



# **The daily cardinal. Vol. LXXI, No. 50**

## **November 18, 1960**

[Madison, Wisconsin]: [s.n.], November 18, 1960

<https://digital.library.wisc.edu/1711.dl/YSX6ORO7MD6K38E>

<http://rightsstatements.org/vocab/InC/1.0/>

The libraries provide public access to a wide range of material, including online exhibits, digitized collections, archival finding aids, our catalog, online articles, and a growing range of materials in many media.

When possible, we provide rights information in catalog records, finding aids, and other metadata that accompanies collections or items. However, it is always the user's obligation to evaluate copyright and rights issues in light of their own use.



# The Daily Cardinal

Complete Campus Coverage

VOL. LXXI, No. 50

University of Wisconsin, Madison, Wisconsin, Friday, November 18, 1960

5 CENTS A COPY

## Lana Daniels No Longer A Candidate

Lana Daniels, District III Student Senator, has withdrawn from her campaign for re-election to Senate in Tuesday's all campus election.

Miss Daniels told the *Daily Cardinal* last night, "Because of the circumstances, I am ineligible to continue to run for an office and withdraw my name from Campus party, as a candidate for Dist. III Senator."

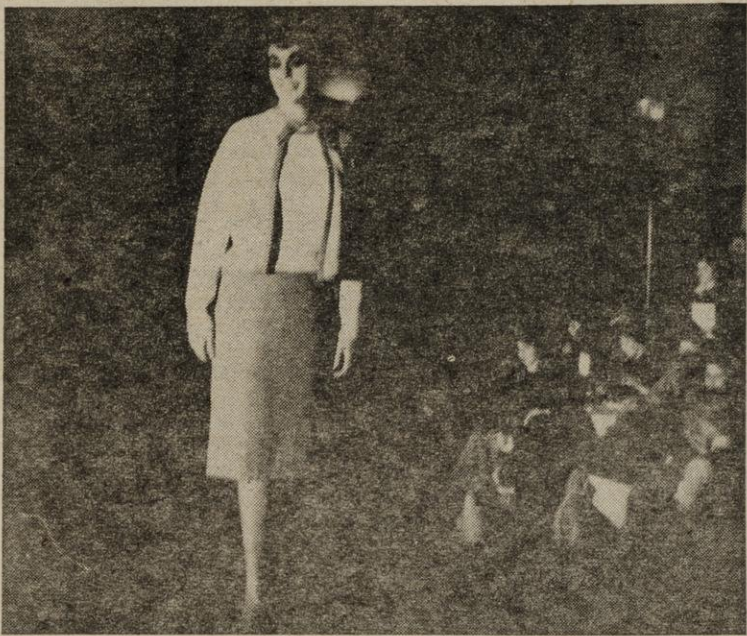
"However," she continued, "I will do all that I can to support the Campus candidates and work for their election."

Elmer E. Meyer, Jr., student activities advisor, said last night that Miss Daniels' ineligibility "is due to a probationary action of the kind which would limit her from all-campus activities."

The probationary action stems from a violation of women's hours regulations.

Although it would be possible for Miss Daniels to appeal the decision to the faculty Student Conduct and Appeals committee, she said last night that she was not sure whether she would do so.

If her appeal were considered by the committee, she would become eligible for the election and for serving on Student Senate while that appeal was being reviewed.



**AWS FASHIONS**—Jeane Schweger models a three-piece skirt and sweater set at the AWS Fashion show last night in Union Great hall. Jeane wears a slim skirt of mink brown, a beige short-sleeved pull-over sweater and beige Chanel jacket trimmed in mink brown.

—Cardinal photo by Don Klicko

## Reviewer Calls Play, 'J.B.,' 'Magnificent Theater Piece'

By JIM WESOLOWSKI

The opening night audience at the Wisconsin Union theater was treated last night to a magnificent piece of theater—"J.B." The performance of Archibald MacLeish's play was just that—theatre. And all the more magnificent for the fact that it was staged on a stage, theatrically.

The three lead players—John Carradine, Shepperd Strudwick, and Frederic Worlock—carried off with the utmost of grace the

play within a play that makes up the verse of "J.B." A pleasure to watch, a pleasure to hear, those men demonstrated what is meant by the term "professional."

FROM 8 to 10 p.m., the audience experienced a complete unit that stood on the stage as a thrillingly and completely theatrical impression. We were watching a play, on a stage, done by actors, written by a poet. And it was exciting not because it fooled us, but because it was beautifully and excitingly put together.

There were no low points during the evening; but several high points immediately come to mind: the telling, explosive impression of the endless glare of a flash bulb striking into a woman's, and our hearts . . . the ritualistic mystical chorus conclusion to the first act . . . the exciting and tempting arguments of the three "comforters" rejected, and the final elevation of the last act.

ALL OF THE lesser roles were filled proudly. Especially attractive were Richard Kuss, in a variety of roles, and Virginia Kiser, as the vigorous moll. The chorus of older women swelled across the stage appropriately, and the children of Jab warmed the audience at an early stage.

All of the technical effects deserve special commendation. We returned to a literal up-and-down stage area that made up the center turntable of the set, which

(continued on page 8)

## 2 Party Chairmen Review Platforms

By JEFF GREENFIELD

The chairmen of the Badger and Campus parties last night replied to the platform suggestions of *Cardinal* staff writer James O'Connell. Both declared much agreement with O'Connell's suggestions, and pointed out that many of his planks were already in one or the other of the platforms.

Campus party chairman John Jacobson stated: "I'm very happy that the *Cardinal* has given the Campus party free publicity; much of O'Connell's planks are already in our platform."

Jacobson pointed to the Campus platform plank advocating a shortening of women's physical education requirements, and a re-districting proposal. The re-districting plank, he said, is already before the Senate legislative committee.

JACOBSON supported the direct election of all student senators, and the proposal to give students the rights of initiative, referendum, and recall. He suggested giving Student court more, but not total rights in student misconduct cases. Jacobson suggested that some cases were best left in faculty hands.

On the suggestion for an investigation of Madison bookstore prices, Jacobson noted that this, too, was before the Student senate legislative committee. On only one plank did Jacobson differ; this was the proposal of strict enforcement of participation in Union events.

Said Jacobson: "The use of the Union by Madison residents has promoted good relations between the university and the city. It is a matter of good public relations. Furthermore, the Wisconsin center and Monona terrace will take much of the social-cultural load off the Union."

"IN GENERAL," Jacobson said, "the O'Connell column was a reiteration of the Campus party platform."

Speaking for the Badger party,

Chairman Gene Armstrong stated that "some of the planks in the platform show very careful thought and are very practical. Others are not in keeping with the form of student government."

Armstrong said the book exchange plank was part of the Badger platform. On the physical education plank, Armstrong said that all physical education should be voluntary. "Compulsory physical education should be taken care of in high school." The Student court platform is also in the Badger platform. Armstrong expressed a belief that students should enjoy full judicial rights.

THE PROPOSAL to turn all student jurisdiction over to Student court was opposed by the Badger leader. "Student Life and Interests committee has promoted much cooperation between the administration and the students. This is to their credit, and they should continue their present function," Armstrong said that Madison residents should continue to enjoy Union facilities.

Armstrong favored initiative and referendum, but said he would support recall "only if those seeking recall could prove to the Committee on Elections that the senator had been acting in an incompetent manner." Armstrong, like his Campus par-

(continued on page 8)

## World News Briefs

**CLOUDY AND COOL**—Partly cloudy and cool today. Increasing cloudiness tonight. Saturday, mostly cloudy with light showers. High today in the mid forties; low tonight near 30.

### KENNEDY TO CONFER WITH DULLES

Bergstrom Air Force Base, Texas—President-elect Kennedy is flying back to Florida after a one-day visit at the Texas ranch of his running mate Lyndon Johnson. Kennedy told newsmen tonight that Johnson will be the most effective Vice-President in U.S. history. The President-elect will confer with Central Intelligence Director Allen Dulles tomorrow on the Central American situation.

### U.S. CARRIERS OFF GUATEMALA

Augusta, Georgia—The U.S. aircraft carrier "Shangri-La" and four destroyers are patrolling an area off the southern tip of Cuba by order of President Eisenhower. The president ordered the vessels on patrol to prevent any invasion of Guatemala and Nicaragua from what was called "Communist-directed" elements. The Cuban propaganda organs have called the action "a grave threat to world peace."

### BOARD ASKS INTEGRATION HALT

New Orleans—The New Orleans school board has asked a federal judge to vacate his order integrating city schools. The school board's action follows a wave of racial violence last night and early this morning in which New Orleans police arrested 25 persons throughout the city. Judge Skelly Wright has scheduled a hearing tomorrow on the board's request.

### STARVED ROCK SLAYINGS SOLVED

Ottawa, Illinois—A 23-year-old ex-marine has confessed to the nine-months-old murder of three Chicago housewives in Starved Rock state park in Illinois. Chester Weger told police that the bludgeon slaying of three socially prominent women was just a "robbery that got out of hand." Weger was a bus boy at the resort lodge where the three women were staying.

### RECORD INCOME HIGH REPORTED

Washington—Personal income hit a record high in October according to latest figures released by the Commerce department. The report says higher wages and salaries in government, retail trade and construction pushed the October figure to a new mark despite a decline in manufacturing payrolls for the fifth month in a row. The individual income report reflects earlier government statements which indicated no decisive trend up or down in October.

## Dist. IV Sets Up New Area Lines At First Meeting

The re-organization of District IV was outlined at the commission's first meeting yesterday in the Union.

Student Sen. Ed Sandvold explained that the commission has decided to divide District IV into six areas. Originally, one representative from each living unit was to be on the commission. However, such an arrangement would involve far too many people. Therefore, Dist. IV has been divided into six areas of approximately eight living units each. Each living unit will choose a representative and then each area will choose a representative.

Ed Sandvold and Gretchen Becker, who is running for re-election on the Badger party ticket, stressed the importance of the District IV commissioners. They explained that these commissioners serve as liaisons between the students and the student senators.

The commissioners will also sound out student opinion on certain issues by collecting and processing information, and reporting actual student opinion in the various living units. Commissioners will also have a voice in determining district policy.

At the next Dist. IV meeting, commission policy will be discussed.

At the close of the meeting, Miss Becker re-emphasized that students should take a more active interest in WSA and that "this was the main idea behind the commission set up."

## Campus Party Posters Down In Dorm Area

A special plea to students in Dist. III who have been tearing down campaign signs was issued Thursday by Campus party.

HOUSEFELLOWS of the Holt and Kronshage areas informed John Jacobson, party chairman, that most of the original posters of Campus party had been torn down by Monday morning and that the posters put up recently were also disappearing rapidly. Housefellows are personally checking on the problem and are watching for any offenders.

Jacobson, commenting on the campaign, said, "I feel things are going quite well, but it's entirely a toss-up. I'm very disappointed that the dormitory incident has come up, as this reduces the campaign to a mud-slinging level, instead of upholding the informative one we're trying to carry out."

## .22 Shell Fired Into Coeds' Room

A .22 caliber bullet was fired through a window of Carroll hall, it was reported to police Thursday.

The bullet entered the room of Roberta Pollock and Judy Sackin. They were not in the room when the bullet was fired.

Police have not yet determined who fired the bullet or from where it was fired.

## 1960 Homecoming Profits Reported

Dave Rice, co-chairman of the Special Projects committee of the Wisconsin Student association, told Executive committee last night that Homecoming dance will bring WSA a \$500 to 600 profit.

HE ADDED that the total profits of the dance, show and Homecoming buttons will be greater than last year's proceeds.

Barbara Duwe told Exec that only schools which participated in last year's mock UN will be invited to participate again this year. The mock convention may feature three secondary speakers—from the Soviet, neutral, and Western blocs.



"... that Continual and Fearless Sifting and Winnowing by which alone the truth may be found ..."

# The Daily Cardinal Comment

A PAGE OF OPINION

## Greek Discrimination ...

### On Its Way Out?

Thirteen days from today is the deadline for Sigma Nu and Alpha Tau Omega fraternities to show they no longer are forced by their national organizations to discriminate in selecting members. By Dec. 1 they must have presented to Prof. Gladys Borchers' faculty Human Rights committee statements by their national officers granting them waivers from discriminatory clauses in their constitutions.

IF THE TWO GROUPS present proof of their waivers by that time—and both have told the **Cardinal** they fully expect to comply with the deadline—the matters will be settled. The two fraternities will remain in good standing, and the 1960 Clause will have accomplished its purpose of removing national bias from local fraternity and sorority chapters, except for Sigma Chi, which has been given an extra year to change or receive exemptions from certain parts of its national constitution.

If, however, either Alpha Tau Omega or Sigma Nu does not prove to the committee by Dec. 1 that it has been given waivers from its national discriminatory clauses, it will automatically be off-campus, thereby losing its present fraternity status.

QUESTIONS HAVE come up as to whether Alpha Tau Omega and Sigma Nu, or any fraternity or sorority, do or will discriminate in selecting members even though they are free from national pressures and requirements. We would say that most Greek living organizations do discriminate; that is presently one of their basic reasons for existing. But according to Miss Borchers, her committee and the university faculty are not expressly interested in making sure the local organizations do not discriminate, but they are definitely interested in making sure the groups are free not to discriminate if they choose not to.

Once this freedom is established, an education process can be started, in which faculty members and others concerned can try to persuade fraternity and sorority members that they should open their doors to wider membership, so that they can receive the benefits of associating closely with students of different races, creeds, and backgrounds.

MISS BORCHERS told us yesterday that her committee is thinking about talking to individual representatives of fraternities and sororities in an effort to help them with questions and problems regarding human rights. An excellent idea, for we cannot be satisfied with just the fact that local Greek chapters are free to admit to membership any student they want; they must be convinced that broadening their membership would be greatly advantageous.—B.T.

## the inVINCEible



"Now, I'll be frank, professor; I haven't quite finished my paper."

# NSA Main Issue Today

(EDITOR'S NOTE: Our series of statements by the candidates in Tuesday's all-campus elections continues today with those from the hopefuls from Student Senate seats from Districts II and III).

ble innovation on our Wisconsin campus as well.

Kathy Stettler,  
Don Kind,  
Campus Party,  
Dist. II

## Campus ...

Campus party feels that a concrete plan of action which is in accordance with our party's stated purposes is a necessary part of a winning platform. This concreteness is the basis for the planks in our platform this year, and we feel this is a major advantage over the vague generalities of the opposition's platform on controversial issues.

Two specific planks we would like to discuss concern:

1. informing students of their judicial rights and, 2. a student notetaking service.

**JUDICIAL RIGHTS:** Since student knowledge of judicial affairs and legal rights on campus is insufficient and vague, Campus party would establish a Judicial Rights committee, which would be organized within the Welfare department of WSA.

This committee would publish legal procedures on student rights in the **Student Handbook** and the **Daily Cardinal**. In addition, the committee would give personal counselling on legal rights to the students. We believe such a committee would be very advantageous to many students who have questions on their legal rights concerned with the faculty, Student Court of Appeals, and the administration.

**STUDENT NOTETAKING SERVICE:** Campus Party supports the establishment of a service by the WSA Academic Affairs department which would hire students to take notes at major lectures. These notes would be put into outline form which would cover the major points of the lecture as it is presented. This is important in making optimum use of lecture time. Several professors have already indicated their support of this idea, stating, "we want to test the students' comprehension of the material and not his notetaking ability." This plan is working successfully in Michigan at the present time and we feel it would be a valuable

During the ensuing campaign the major issue which will undoubtedly evolve is the Campus party plank on the constitutional amendment. Our amendment states: "We urge the amendment of the WSA constitution to read: Membership in NSA may be temporarily suspended by a 3/4 majority vote of Student Senate until a referendum at the next all-campus election."

**THE MOST** important use of this amendment will be policy making. To emphasize this point we will cite an example which happened recently. In 1952 NSA endorsed a particular policy. Harvard University felt that this particular issue was beyond the bounds of NSA. To prevent connection between the NSA policy and their school, Harvard withdrew from the organization. In an effort to regain Harvard as a member, NSA changed its policy.

We could accomplish the same results in case of a disagreeable stand by NSA. Wisconsin was one of its founding schools and today is still one of the strongest schools in the organization. NSA would respond to our request for the reason that it could not afford to lose us as a member.

**BADGER PARTY** in their frantic attempt to create issues to avoid the students' investigation of their bland platform and distract attention from the positive platform of Campus party has claimed we are against NSA. How erroneous, how absurd, how ignorant. What we are opposed to is an inflexible constitution.

The amendment which we pro-

pose would only allow Student Senate to remove WSA from NSA by a 3/4 vote until the next all campus election. We must put confidence in the future members of Student Senate if we are to function efficiently. This amendment would allow us to exert more pressure on NSA if we did disagree.

**WE SINCERELY** hope that the student body will examine most carefully not only the present stands of both parties but also their past records, and we hope that you will decide to back Campus and allow us to continue the work started.

Lana Daniels,  
Charlotte Gunderdorf,  
Tom Blanchard,  
Campus Party,  
Dist. III

## Badger ...

While campaigning in Dist. III we have been asked on many occasions to speak about the National Student association. As a charter member of NSA the university has always enjoyed a pre-eminent position in this confederation. The Badger party sees this as a means of giving vigor and direction to the organization that effectively represents the American students in a world that will be looking to us for leadership.

**WE SEE** that whatever course of action the majority in NSA might decide upon, although we are not bound to follow it, we will always serve our best interests by exerting the influence that we have within the organization of NSA. We feel that this is the only positive approach.

The Campus party apparently does not feel it is necessary to have a positive attitude. Their

(continued on page 3)

## the staff speaks

Daily Cardinal Writers Give Their Opinions

By JEFF GREENFIELD

The recent campus controversy over the House Un-American Activities committee has served to bring into sharp focus a basic difference between the liberal and conservative spokesmen—that of temperament.

The method of discussion and persuasion, reflects deeply into the positions of the two basic factions in the political and economic fields, for it illustrates how the two groups view themselves, as well as each other.

**THE CONSERVATIVE** is basically a defender of the status quo. Although recent government positions have aroused his ire, the conservative sees the basic economic climate as satisfying, needing only a purge of socialist tendencies to restore itself to its 19th century perfection.

He wishes no revamping of the system of production and distribution, nor does he especially urge the undertaking of government in any new area of participation. As such, the conservative must assume the mantle of calmness, of tranquility, of equanimity.

**HE APPEARS** at his best when he assumes the position of the solemn deliberator, warding off hordes of hysterical liberals as he softly suggests that they view the truth without the fevered emotion he sees them as victims of.

For him, change is the forerunner of revolution, and this he is most decidedly against. His best hope is to present his cause as the ultimately correct one, free from the chains of immediate hysteria and blindness.

**THE LIBERAL**, by his nature, is excited. He is in a state of

agitation because he views the present environment as one in need of considerable repair. A huge unemployment rate, jungles of slums, elderly people without medical care, workers earning unlivable wages, all arouse in him feelings of anger, pity, and a desire to correct the situation as soon as possible.

A congressional committee operating in apparent violation of civil liberties presents itself to the liberal as a threat to the civil liberties of all of us. In sum, the liberal is highly dissatisfied with his environment, and wants something done about it.

**THUS**, his outlook alters his temperament to one of agitation, of action. He is vocal, he is active, and he is thrown into sharp contrast with the unmoving conservative, standing rock-like in the path of justice.

The liberal sees the conservative as rendered paralyzed by a combination of blindness and euphoric drugs of apathy. Where the liberal is constantly in motion, picketing, attending rallies, arguing for reform, the conservative sits quietly, content to let the tide of history overtake him without even trying to dam up the flood.

**THE CONSERVATIVE** and the liberal, then, agree in their image of one moving and the other motionless, but they disagree as to its significance. The conservative would say that he is standing firmly on proven truths and defending society against the fevered whims and capriciousness of the mob; the liberal says that he is agitating for justice, while the conservative is viewing truth with no desire to rouse himself over to it.

## In the Mailbox ...

### No More Fooling

AN OPEN LETTER

TO JAMES M. O'CONNELL

Dear Jim:

Although I normally find issue with most of your arguments, I heartily agree with your stand on the forthcoming campus election campaign. Let's quite fooling ourselves and get down to some concrete issues!

With the possible exception of a slightly different redistricting system as you put forth in part I of your platform, I second the motion!

R.P.L.

## The Daily Cardinal

FOUNDED APRIL 4, 1892  
Official student newspaper of the University of Wisconsin, owned and controlled by the student body. Published Tuesday through Saturday mornings during the regular school session, by the New Daily Cardinal Corporation, Journalism Hall, Madison. Printed at the Journalism School typography laboratory. Subscription rate—\$6.00 per year, \$3.50 per semester, by carrier or by mail. Single copies 5 cents each. Second-class postage paid at Madison, Wis.  
Member, Inland Daily Press Association  
Editorial and Business offices—Journalism School, North wing.  
Office hours: Editorial 2 p.m.-12 p.m.; Business 8 a.m.-3:30 p.m.

6TH ANNIVERSARY SALE

OPEN FRIDAY NIGHT

6TH ANNIVERSARY SALE

1/2

PRICE LP SALE BEECHER'S

FOR RECORDS & STEREO

430 State St. - Phone AL6-7561



## Badger...

(continued from page 2)

platform states that whenever NSA takes a distasteful stand, 3/4 vote of the Student Senate could suspend our membership, thus eliminating any representation we might have used to influence NSA to our way of thinking. This is an irresponsible approach at best, and one which we do not think the students will elect to represent them next Tuesday.

WE HOPE this explanation will help answer the questions that students in our district have concerning NSA. We feel, however, that there are other parts of the Badger party platform that are of great value to students.

We feel that the Badger party

## 31 ROTC Cadets Get Distinguished Military Awards

Thirty-one student cadets in the ROTC have been presented with certificates of appointment as Distinguished Military students, it was announced yesterday.

Awards were presented to the cadets by Col. Josef A. Prall, professor of military science and tactics and commandant of the ROTC unit.

Cadets are chosen for the honor on the basis of outstanding ability and high qualities of leadership, moral character, and definite aptitude for military service. They must have high ratings in their studies as well as outstanding records in their military subjects.

Cadets honored are: David Williamson, Don Quam, James Fisher, Norbert Schwarz, Gordon A. Putney, Robert W. Niedermeier, David Ernst, Lee Dannenberg, Henry Derleth, Richard Gerber, Frederick Hanson, Richard Hankel, Gary Harms, John Hughes, Thomas J. Walter, John Hulder, Peter Kind, Donald Knutzen, Adrian F. Kruswicki, Thomas Leonhardt, Edward Mattison, Gerald F. Moore, Edward Sandvold, Richard O. Mueller, Arthur Poehlman, Tim Ross, Wayne Thomas, Ernest Smith, Charles Steeno, Warren Stern, and Elmer J. Kirmse.

### MED CENTER VISITOR

Dr. Benjamin Barrera, dean of the College of Medicine of the University of the Philippines, is visiting the university Medical Center to study methods of administration in an American medical school and teaching hospital. Dr. Barrera arrived in Madison Wednesday for a two-week visit.

## GOODMAN'S

Flawless Quality Diamonds



\$349<sup>75</sup>

Choose NOW the ring that will reflect your own good taste and be loved by her for a life-time.

Goodman Diamond Prices start at \$67.50

Layaway Now  
for  
HOLIDAY GIVING

Convenient Terms  
No Interest.  
No Carrying Charges.  
AT

**GOODMAN'S**  
The Diamond Store of Madison  
220 State St.

program for establishing a student book exchange, the program for obtaining late study facilities, the plan to refer student conduct cases from the Faculty Conduct and Appeals committee to the WSA Student Court are some of the positive programs offered in the Badger party platform that will be of great service to the student body. We hope that you will compare the platforms of the parties and vote for the candidates according to what they stand for as stated in their platforms.

Marnie Schrage,  
Glenda Carper,  
Henry Schwarz,  
Badger Party,  
Dist. III

Discrimination in housing is a problem throughout the university community, but perhaps in District II, where a large group of international students live, this is an especially important issue.

To combat this problem, we urge approval of the recent Student Senate proposal, supported by Badger party, to make sure that all landlords now having or seeking university housing approval are aware of the university's insistence that there be no discrimination in approved housing, and to encourage the Welfare department of WSA to detect and

report instances of discrimination in approved housing.

EXPANSION of the university facilities is eliminating an increasing amount of student housing in District II. We suggest that the newly organized committee formed by Student Senate concerned with increasing enrollment consider the feasibility of the university building more co-operative living units, both to ease the squeeze of the housing shortage, and to provide a common meeting ground of American and International students.

We also feel that the increasing enrollment of the university makes especially desirable an increase in academic programs, such as the ILS program, which provide a close professor-student

Friday, November 18, 1960

THE DAILY CARDINAL—3

relationship within this large university.

We believe that students, in preparing to become full-fledged citizens of the country, must become concerned with national and international problems as well as campus problems. The sit-in movement of the southern Negro students, part of the attempt to obtain equal citizenship, deserves our whole-hearted support. Thus, we approve of the Student Senate stand on the sit-ins—support of a non-violent student protest of a moral wrong.

Dietrich Kessler,  
Amy Herman,  
Badger Party,  
Dist. II

**RIDE**  
**BADGER COACHES**  
*Fast Express*  
**TO**  
**MILWAUKEE**

**Via HIGHWAY 30**

TRAVEL TO CHICAGO  
via **BADGER BUS**  
and **NORTH SHORE TRAIN**  
for the most convenient  
connections to your destination

Leaves Madison  
And Milwaukee Daily  
7:30 AM 10:00 AM 12:30 PM  
3:00 PM 5:30 PM 8:00 PM  
10:30 PM—Fri., Sat., Sun.  
& Holidays only

**BADGER COACH FARE**  
One Way \$1.70 plus tax  
Round Trip \$3.06 plus tax  
**BADGER COACHES, Inc.**  
**UNION BUS STATION**  
PHONE AL 5-6771

the **Voice**  of Music®

### Stereo Tape Recorder

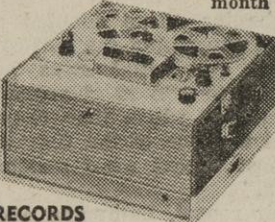
4-Track Stereo/Record Tape Recorder—Model 722. Now you can record stereo-phonically right at home! Record stereo broadcasts, preserve your finest stereo records on tape and record family fun in full stereo! Two microphone, Dual-Cathodic Tuning Eye for professional-quality recording results. Records and plays-back monophonically on four tracks as well. Simple push-button controls assure complete ease of operation. Unique, "Add-A-Track" feature for added enjoyment.

**BEECHER'S**

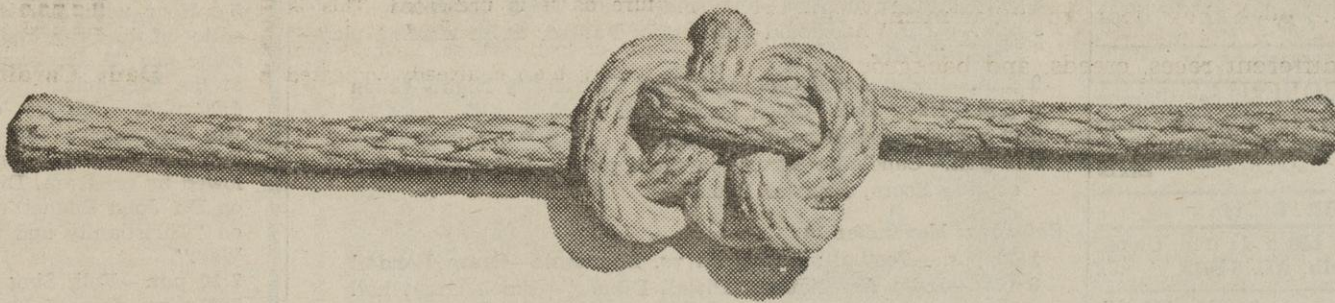
430 State Street —Student Accounts Invited— AL 6-7561

**\$259<sup>95</sup>**

\$5.00 per month



when  
you  
look  
at  
a  
knot



do  
you  
want  
to  
untie  
it?

If you're the type who enjoys unraveling tough problems . . . who finds it hard to resist any challenge . . . you're apt to discover unique satisfaction and opportunity in the dynamic field of electronic data processing.

The marketing of data processing systems is challenging and fascinating. After comprehensive training, you work with management executives in diverse industries, study their business or scientific problems, figure out the solutions by use of data processing systems, and assist the customer in putting the solutions into effect.

Electronic data processing offers great opportunities for outstanding, technically trained young men with a flair

for business. It's a new professional occupation offering unusual opportunities for personal and financial growth. There are openings throughout the country in the marketing of systems or direct sales.

If you are a candidate for a bachelor's or advanced degree in engineering, science, mathematics, or business, see your placement director for additional information about IBM and arrange for an interview. If you prefer, feel free to write or call me:

Mr. W. A. Hedlin, Branch Manager, IBM Corp.,  
P. O. Box 1608, Madison 3, Wisc., AL 7-1424

You naturally have a better chance to grow  
with a growth company.

**IBM**

DATA PROCESSING DIVISION



## University Profs. Earn "C" Average in Salary Grades

Salaries of university professors earned a grade of "C" on the national grading scale of the American Association of University Professors for 1959-60, according to the report submitted this week to the university chapter of the association.

In submitting the figures, economics Prof. Robert Lampman, chairman of the AAUP committee on faculty salaries, pointed out that neighbors Minnesota and Michigan — as well as Indiana,

Northwestern, and California—earned "B" grades on the scale. At present only Harvard enjoys an "A" rating.

The Madison chapter voted to give full support to the university administration and Board of Regents in their 1961-63 budget request for salary increases. The request calls for a 16 per cent increase the first year and a 6 per cent increase the second year.

**MEMBERS** resolved to make every effort "to inform the legislature and the general public of the continued effort that must be made over the next several biennia to preserve and to improve the quality of the educational opportunity which will be open to the rapidly mounting numbers of Wisconsin high school graduates."

The chapter also adopted a resolution expressing the earnest hope that substantial steps be taken soon to add to classroom space, lack of which they characterized as "one of the University's most urgent and serious problems."

In their report, Lampman and associates revealed that in 1959-60 Wisconsin ranked 19th among the 26 major graduate degree-granting institutions of the nation. The rank of the university among Big Ten schools falls to

9th if fringe benefits are included.

"It is interesting to note that the professors' average salary here was far from the top in these several rankings (as much as \$5,000 below the top in the national ranking, for example), but only about \$1,000 from the medium in any case. On the other hand, the university's average is only \$800 above that of the lowest Big Ten school."

**"IT IS HARD** to evaluate these data as indicators of Wisconsin's current bargaining position. Perhaps it is enough to say that if Wisconsin aims to continue being one of the leading 12 universities in the nation, then it must pay salaries that are near the average of those schools," the report said.

"Between 1939 and 1959 per capita real personal income increased 83 per cent; average weekly wage-earnings in manufacturing rose 77 per cent. The mean net incomes of physicians and dentists rose more than 90 and 45 per cent respectively. That of lawyers rose more than 34 per cent."

"Nation-wide, academic salaries are moving up. It is important that each state make its contribution to the achievement of more nearly adequate salary levels. But it is necessary for each university to keep its salaries moving up just to maintain a competitive position among all universities. One must run very fast just to stay in the same place in the situation of greatly increasing demand for academic personnel," the report said.

## Club To Hold Party and Panel

The Latin American club is sponsoring a party and a panel discussion this weekend. The party tomorrow, will be held from 8 to 12 p.m. in the Union's Old

Madison room.

"United States Investment in Latin America—Aid, Trade, or Private Investment?" will be the topic for a panel discussion Sunday at 8 p.m. in the Union's Round Table room. Taking part will be Professors T. P. Ellsworth and William Glade.

All students are invited to attend both programs.

## HEY STUTS!!



Madison's Newest Record Shop Now Open!

## STUDENT DISCOUNT PLAN

POPS • CLASSICS • FOLK • WESTERNS • SINGLES

HOURS: 9:30 to 6 P.M.

MONDAY AND FRIDAY—9:30 to 9 P.M.

• PHONOGRAPHS • RECORDS • TV and RADIO REPAIR

## Campus Record Shop

907 University — across street from Chadbourne



## Religion On Campus

### HILLEL FOUNDATION

611 Langdon St. AL 6-8361

Fri., 8 p.m.—Services followed by Oneg Shabbat: A student panel on "Has the Time Arrived For Jewish Missionaries?"

Sat., 9:30 a.m.—Shabbat Rosh Hodesh Services.

Sun., 1:30 p.m.—Grad Club Coffee Hour with Morris Rubin, editor of the Progressive Magazine on, "A Backward Look at the Elections."

4:00 p.m.—History of Zionism Discussion group.

5:29 p.m.—Cost Supper followed by program. Discussion on Dr. John Bennett's lecture on "Christianity and the Cold War."

7:30 p.m.—Folk Sing

8:00 p.m.—Israelis Folk Dancing.

### CALVARY LUTHERAN CHAPEL & STUDENT CENTER

713 State St. AL 5-7214

Sunday Service — 9:00, 10:15, 11:30 a.m.

5:30 p.m.—Cost Supper—Program.

7:00 p.m. The Lutheran Acapella Choir of Milwaukee

Tues., 7:00 a.m.—Matins

7:00 p.m.—Theological Study group

### CHRISTIAN SCIENCE ORGANIZATION

315 N. Mills St. AL 5-4066

Reading Rooms are open 8:30 a.m. to 4:30 p.m. Mon.-Fri. Tuesday Evening Testimony Meetings are at 7:30, all are welcome

### UNITED STUDENT FELLOWSHIP

303 Lathrop St. CE 3-6815

Sat., After-the-game-coffee hour at U.S.F. House

Sun., 9 a.m. Informal discussion with Dr. Bennett at U.S.F. House

5:00 p.m.—Cost Supper

7:30 p.m.—"Quiz the Professor" at Old Madison Room.

Sun., Nov. 27, 5:00 p.m. Informal Supper at U.S.F. House.

### WESLEY FOUNDATION

1127 University Ave. AL 5-7267

Sun., 9:30 & 11:00 a.m.—Worship Service — Sermon: "Three Times Thankful"

5:30 p.m.—Buffet Supper and Student Programs

### PRES HOUSE Presbyterian Student Foundation

731 State St. AL 7-1039

Fri., 4:00 p.m.—Snack Hour

Sun., 9:45 & 11:15 a.m.—Worship Services, Sermon—"The Intruder"

10:45 a.m.—Coffee Hour

4:00 p.m. Oratorio Choir Practice

5:55 p.m.—Cost Supper—The Program—Quiz Dr. Bennett—University Lecture Series, Union.

### ST. FRANCIS HOUSE

1001 University Ave. AL 6-2940

Sun., 8:00 a.m.—Services

10:00 a.m.—Morning Prayer

10:30 a.m. Song (Eucharist)

5:30 p.m.—Evensong

6:00 p.m.—Cost Supper and program—The Rev. Robert Shaw of St. Andrew's, Madison will speak.

Communion: Mon., Tues. and Fri., 7:00 a.m.

Wed., 12:00 noon

Thurs., 5:00 p.m.

Sat., 8:00 a.m.

Evening Prayer: Daily except Sat., 5:00 p.m.

Tues., 7:15 p.m.—Study and discussion groups

### LUTHERAN STUDENT CENTER

228 Langdon St. AL 6-1968

Coffee Hour After the Game

Fri., 7:30 p.m.—Grad Club, Pastor Teske's home. Prof. Leroy Holm will speak.

Sun., Afternoon—Choir practice

5:15 p.m.—Sunday Evening Club Cost Supper and program

7:00 p.m.—Group will leave Center for Union to hear Dr. John Bennett speak.

Mon., Tues., Wed.—8:00 a.m. Chapel

Coffee Hour—Everyday at 3:30

### St. Paul's Catholic Chapel

723 State St. AL 5-1383

Masses:

Sun., 7:45, 8:45, 10:00, 11:15

12:30

Breakfast except after 12:30

Mass

Daily, 6:30, 7:00, 7:30, and 4:45 p.m.

Sun., 7:30 p.m. Pax Romana

Tues., and Thurs., 7:30 p.m. Inquiry Classes

Wed., 7:30 p.m.—Newman Association Meeting

## The Week's Doings At The University

### Friday, November 18

12 m.—Movie Time "Sayonara"—Union Play Circle

12:30 p.m.—Student Court—Union Penthouse

4 p.m.—Jazz in the Rat—Union Rathskeller

4-5:30 p.m.—Badger Party—Union Old Madison East

7:30 p.m.—Planetarium Demonstration, "Galaxies"—Sterling hall

8-11:30 p.m.—Folk Arts—folk sing—Union Tripp Commons

8 p.m.—"J.B." Archibald MacLeish's Pulitzer Prize winning play—Union theater

9 p.m.—International Club and Grad Club Party Night—Union

9 p.m.—Navy Ball—Union Great Hall

9-12 p.m.—Danskeller—Rathskeller

9-12 p.m.—Candlelite Service in shore patrol—Union Great hall, Reception Room, Popover Room

### Saturday, November 19

1:30 p.m.—Football: Wisconsin vs. Minnesota—Camp Randall

6 p.m.—India Association "Diwali Dinner"—Union Great hall

8 p.m.—Latin American Club—Union Old Madison

8:30 p.m.—International Club Thanksgiving Party—Union Tripp Commons

### Sunday, November 20

3 p.m.—University Symphony Orchestra, Prof. R. C. Church, Director—Union theater

3:30 p.m.—University Religious Lecture "Christianity and the Cold War," Prof. John Bennett—Union Great hall

4 p.m.—Wis. Salon of Art—Reception and Announcement of Awards—Union Main lounge

4 p.m.—Carillon Recital, John W. Harvey, carillonneur—Memorial Carillon

4:30 p.m.—Grad Club Coffee—Union Reception

5 p.m.—Smorgasbord—Union Tripp Commons

7:30 p.m.—Discussion with John Bennett—Union

8 p.m.—Union Folk Fiesta—Union Great hall

You are cordially invited to—

## THE BILLINGS LECTURE

RALPH N. HELVERSON

Minister First Church (Unitarian) Cambridge, Mass.

## "THE LIFE OF THE MIND"

(The Arguments Against Intelligence and The Case For Its Defense)

MONDAY, NOV. 21 — 7:30 P.M.

Memorial Union Top Flight Room

Sponsored by Channing - Murray Club

**WE BUY — WE SELL Shop**  
IT IT  
• typewriters  
• art supplies  
• miscellaneous items  
304 E. Main AL 7-3956

## CLASSIFIED ADS

### — RATES —

For Three Days or Less—  
25c per line or fraction of line per day.

For Four Days or more—  
20c per line or fraction of line per day.

75c minimum charge

Above rates are net. No commissions or discounts on Classified Ads.

### FOR SALE

RECORDS, Pre-Recorded Tapes, Voice of Music Phonos and Tape Recorders. Your On Campus Music Center. Josheff Music 670 State St. xxx

ENCYCLOPEDIA Britannica. '59 edition with bookcase. CE 8-4428 after 6 p.m. 5x23

IF you are looking for a used TV, see Schuster, 2505 Monroe St. Also man's diamond ring for sale. CE 8-5910 or CE 3-3893. 4x23

### PERSONALS

FOR pen repair & Rubber Stamps made to order it's King Pen Shop 312 State Street in Madison, Wis. 23x19

### FOR RENT

PARKING—1 block from Union. \$8.50 a month. AL 6-3013. xxx

ROOM—single or double. 812 W. Johnson. CE 3-6871. xxx

PARKING available across from Chadbourne. CE 3-6871. xxx

NEED 1 girl to live with 3 others in large 6-room apt. with patio, wall to wall carpeting. Available now. AL 5-8350. 5x23

### LOST

SMALL dark blue purse in vicinity of library or Union. Contact Marlene Buckbinder, AL 6-1117. 3x18

LADIES Longine wristwatch; white gold, 16 diamonds. Initials MCL on back. Reward. AL 5-7309. 3x22

DIAMOND Ring. Valuable. Lost Nov. 3 near Union. Reward. U-2176. 4x23

### SERVICES

THESIS and gen'l typing. Experienced. Will pick up and deliver if over \$10. CE 8-3084. 5x18

TAKE your typing downtown to Girl Friday Service. Professional work. 208 Tenney Bldg. AL 7-1622. xxx

### WANTED

PIANIST to accompany dance classes on West Side. AL 6-2932. xxx

### HELP WANTED

RESIDENT couple and receptionist wanted. Furnished apartment across from University Library plus cash salary. Apply at Pres House, 731 State St. 4x23

### BOARD

MEALCOOKED meals, day, week or month. AL 6-1641. AL 6-6554 or apply at 615 N. Lake. 6x30



# Society and Features

## Delta Sigma Pi Announces Rose Queen Candidates

Delta Sigma Pi, professional commerce fraternity, is selecting a rose queen for its annual winter formal. The Rose Queen will represent the Wisconsin chapter in the national contest, where she will be in competition with the queens of 108 Delta Sig chapters. Last years "Rose of Delta Sigma Pi" was selected by Ed Sullivan and Barbara Hale, who served as national judges.

Fourteen candidates have been chosen for the competition. They are Becky Kough, Jane Minahan, Tobie Kriisa, Majorie Krask, Margo Grant, Helaine Schrank, Kathy Hempe, Lola Lemberg, Pat Hovey, Karen Thorsen, Nancy Schumann, Anne Riddleberger, Dianne Eyth and Ingrid Leach.

From these candidates, three finalists will be chosen by the active chapter and announced on November 22. The rose queen will be chosen from the finalists and announced at the formal, held at the Delta Sig House on Dec. 2. The queen will reign for one year as the "Rose of Delta Sigma Pi" and will be present at such chapter functions as rushing smokers, formals, and chapter award presentations. Her reign will end at the next winter formal when she crowns the new queen.

## Beauty Consultant To Be Selected

Coty, Inc., leader in the cosmetics and fragrance field, is now conducting a search to find the "Coty Girl" to act as a campus beauty consultant.

The "Coty Girl" will be personally trained by outstanding beauty authorities on good grooming, make up and skin care, receiving inside information on all the newest beauty fashions from Paris and New York salons. After training, she will conduct campus clinics at dorms, sororities, and clubs, on the selection of most flattering make up shades, proper application of make up, and solving of individual beauty care problems.

Those interested should contact Prof. I. V. Fine, Commerce school as quickly as possible, since applications close on Nov. 22.

### INITIATES

Activated into Sigma Phi Epsilon fraternity Sunday were Dave Bennett, who was named the outstanding pledge, Bill Duemling, Fred Fedler, John Hughes, Dick Jacobson, Richard Rutherford, Bob Skilton, and Ralph Stelling. Following Sunday's activation ceremonies, Sigma Phi Epsilon's annual Founder's Day banquet was held.

### AE PHI OFFICERS

Newly elected officers of Alpha Epsilon Phi are: president, Arlene Silver; vice-president, Rochelle Schaffer; secretary, Helene Stein; treasurer, Mona Garon; rushing chairman, Marsha Schaffer; social chairman, Bonnie Freed; house president, Harriet Simensky; senior Pan-El representative, Betty Polacheck; junior Pan-El representative, Susan Jo Weiner.

## Beer Suppers Slated Tonight

To start the last football weekend of the year many groups have scheduled beer suppers. Kappa Sigma and Pi Beta Phi; Alpha Gamma Rho and Gamma Phi Beta; Alpha Chi Rho and Delta Zeta; and Beta Theta Pi and Sigma Delta Tau will be sharing supper.

Also eating together are Theta Delta Chi and Chi Omega; Theta Chi with Alpha Phi; Sigma Alpha Epsilon and Kappa Kappa Gamma; and Alpha Delta Phi with Alpha Xi Delta.

Lambda Chi Alpha will host the girls of Shepard hall and Psi Upsilon entertains Kappa Delta. Zeta Beta Tau and Villa Maria plan to get together as do Pi Lambda Phi and Elizabeth Waters.

Other groups planning beer suppers are Sigma Phi Epsilon and Zoe Bayliss; Chi Phi and Alpha Chi Omega; Alpha Epsilon Pi with Alpha Gamma Delta; and Delta Tau Delta with Alpha Epsilon Phi.

Rounding out the list of suppers are these groups; Alpha Tau Omega and Kappa Alpha Theta; Phi Kappa Theta and McConnell hall, nurses dorm; Phi Gamma Delta with Delta Delta Delta; Phi Sigma Delta and Tower View; and Phi Sigma Kappa with Lincoln Lodge.

Some groups are having informal parties to kickoff the weekend. Beta Theta Pi will have a "South Sea Vacation" and McNeel, "Shipwreck." Others are Zeta Beta Tau, Alpha Chi Sigma, Phi Delta Theta, Philips house, and LaFollette house are having informal parties with records.

Friday, November 18, 1960

THE DAILY CARDINAL—5



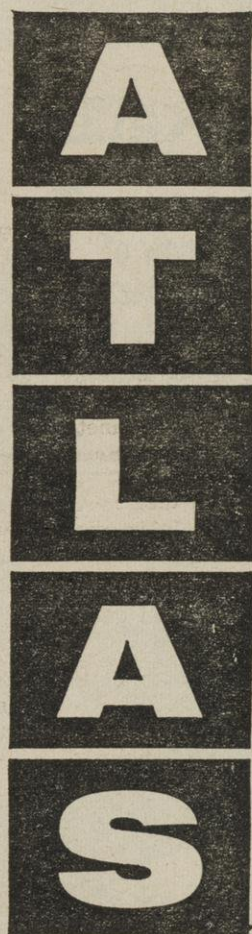
Artist-in-residence Aaron Bohrod will be the honored guest at the Forum Committee's last "Dinner with a Professor" meeting.

The informal dinner will be held in Union Popover 5:30 p.m. Sunday. Mr. Bohrod, one of America's foremost artists, has won recognition through his realistic still-life paintings.

## Will Yonkel and His Beloved Desiree Announce the BIG DAY?

AEPI PLEDGE PARTY — NOV. 19

## CHEMICAL GRADUATES



An expanding, diversified chemical organization offers outstanding opportunity and responsibility to qualified young men at all degree levels in Chemistry and Chemical engineering.

Training through orientation and on the job assignments assist the newer members of our technical staff to adjust rapidly to the amazing and stimulating world of industrial chemistry.

Looking to the future while conquering the present is the theme of the company from the new \$4 million Tech Center in Wilmington, to the laboratory and production facilities in 11 states, to the smallest sales office.

Advancement on merit, interesting projects, good salaries and a planned program of management development will all please the man on his way to a career in a dynamic company.

See your placement officer now to make an appointment with our representative who will visit your campus on December 2 to discuss your career opportunities with —



**ATLAS**  
Powder Company  
Wilmington 99, Delaware

## Union Lists Open Bowling Times

Now that their new bowling lanes with automatic pinspotters have been operating for two months, the Union has had a chance to spot the best times for open bowling and for getting lanes immediately without any wait.

The times especially recommended are 3:30-7 p.m., Monday through Thursday, noon to 7 p.m. on Friday, and all day on Saturday, beginning at 9 a.m. Open bowling hours shape up like this: Monday-Thursday, 3:30-7 p.m.; Friday, noon to midnight; Saturday, 9 a.m. to midnight; and on Sunday 1:00-10:30 p.m.

Rates for Union members are 40c a line and you may rent shoes at the bowling desk.

Our six lanes sport new ball return units, new approaches, and a new lane refinishing job in addition to the automatic pinspotters. The revamping has helped account for a near one hundred per cent increase in usage over last year.

## Jazz-in-the-Rat Headliner To Be Laird Marshall

The Union's social weekend begins this afternoon with "Jazz in the Rat" featuring the modern jazz of Laird Marshall's group. They will play from 4 to 5:30 p.m. in the Rathskeller.

Friday and Saturday evening a portion of the Rathskeller will be cleared for dancing as part of the weekly Danskeller program. Theatergoers are welcome to drop into the Rathskeller after the Friday performance of "JB."

Sunday at 4 p.m. in the Union Main Lounge the Union Gallery committee will host the Wisconsin Salon of Art Reception. At the reception awards totaling \$1,705 will be presented to winning artists.

Sunday evening from 8 to 10 p.m. students may attend the Folk Fiesta, an evening of folk and square dancing.

### PLEDGE OFFICERS

Pledge Officers for Alpha Gamma Delta are: president, Katherine Salversen; secretary-treasurer, Beth Hotchkiss; and social chairman, Judy Nelson.

Things To Write With  
Sales & Repairs

DAVIS  
PEN & PENCIL SHOP  
528 State Madison

## ATTENTION HOUSE PRESIDENTS

You can arrange for a special opening exclusively for your group at

Neil's Factory Outlet Shoe Store

Transportation will be furnished — Refreshments served

And best of all 5,000 pairs of shoes at 1/2 price and less

to browse through and try on

**NEIL'S**

FACTORY OUTLET SHOE STORE

ON EAST BELTLINE AT PLAU RD.

OPEN UNTIL 9 P. M. MON. THRU FRI.

CALL AC 2-2946 for details



## State Doctors Arrive for Convo

Doctors from around the state will be visiting the university Medical center this weekend.

Events begin with a program for preceptors this afternoon. The preceptors are practicing physicians located in 15 centers throughout the state. They give intensive personalized training to senior medical students who are sent to work with them for three months.

A dinner will be held for the preceptors this evening at the Wisconsin State Medical society.

Tomorrow morning at 8:30 in Bardeen auditorium, the preceptors will attend a scientific program in conjunction with the annual fall meeting of the Wisconsin Medical Alumni association.

## British Producer To Speak Tuesday

Are the young men still angry? All eyes will turn to Eric Salmon, eminent British producer-director, as he steps onto the stage of the Wisconsin Center auditorium next Tuesday, to tell a Wisconsin audience about British playwriting since Osborne. The public lecture will begin at 8 p.m. Salmon is director of Theatre

nual fall meeting of the Wisconsin Medical Alumni association. The program of the alumni meeting consists of a symposium concerning lesions which are or may be associated with athletics.

Outlook, a professional British touring company specializing in productions of standard classic works. For ten years he served as drama advisor to the Shropshire Education committee —

teaching, lecturing and directing adult amateur drama organizations.

Recently, Salmon-directed the Ludlow Summer festival and the Shrewsbury Summer festival.

plays for all kinds of schools and The evening program is sponsored by Wisconsin Idea theatre, university residence and Extension speech departments, and the Athenian society.

# Weekend Ahead . . .

Last Chance - Tonight & Sat. to See and Hear



## BOB SCOBEY

AND HIS GREAT NEW BAND

IN THE BADGER ROOM OF THE TOWNE CLUB

306 W. Mifflin — Madison

Your favorite Foreign and Domestic Brands of Beer at Popular Prices

ADMISSION—Fri. and Sat.—\$1.50. (You must be 18 and bring proof)

FIRST SHOW 8:30 P. M.

ONION RINGS 35c

**HOWARD Johnson's**  
RESTAURANT

Alpine 6-9586

S. PARK ST. AT BELTLINE  
(Turn right 400 ft.)

OPEN 6:30 A.M. to 9:30 P.M. EVERYDAY

**ORPHEUM**

THE ONE THEY'RE  
ALL TALKING ABOUT

STANLEY KRAMER presents

SPENCER TRACY/FREDRIC MARCH/GENE KELLY

**"INHERIT THE WIND"**

—A Robust  
Show of  
Razzle-Dazzle...  
A Wonderfully  
Engaging Movie!

DICK VORK  
DONNA ANDERSON

—New York Mirror

## OPEN BOWLING

AT

**THE LARK**

EVERY EVENING

2550 University Avenue

CE 8-1133

## MILROC'S DELICATESSEN

Send a Wisconsin or Imported Cheese Box for the Thanksgiving and Christmas holidays.

Choose from a variety of beautifully wrapped gift boxes.

Priced from \$2.75

We Gift wrap and mail.

## MILROC'S

450 State AL 5-4200

Open 'til 11 p.m. Monday—Thursday and midnight Friday and Saturday.

**ORPHEUM**

NEXT Thurs. & Fri. 8:30 p.m.

## ON STAGE

"YOU'RE IN FOR A WHOLE OF AN EVENING!"

A WALLOPING PIECE OF SHOWMANSHIP! THEATRICAL ELECTRICITY! THE ACTING IS SUPERB... EACH VIGNETTE IS CARVED INTO PERFECTION. —Kerr, Herald Tribune

"STRIKING, ABSORBING COURTROOM DRAMA!" —Watts, N.Y. Post

"A HELL RAISING HEART SEARCHER! BROADWAY DRAMA TOOK A LONG STEP FORWARD." —McClain, World Telegram & Sun

"SUSPENSEFUL HIT! SUPERB CAST! FULL DRAMATIC IMPACT!" —Aston, Journal American

"A PLAY OF FORCE AND POWER! IT'S A DRAMA THAT CERTAINLY SHOULD BE SEEN." —Morehouse, NANA

"DRAMA OF BRILLIANT IMPACT! MEMORABLE DRAMATIC EXPERIENCE... A DRAMATIC TRIUMPH!" —Associated Press

"EXCELLENT ACTING WITH FORCE, SKILL AND PASSION!" —Atkinson, N.Y. Times

"AUDIENCE BEGINS CHEERS BEFORE 'THE ANDERSONVILLE TRIAL' ENDS. LUSTY THEATRE FOUND A LUSTY FIRST NIGHT AUDIENCE." —Chapman, N.Y. Daily News

"ACTION BUILDS TOWARD AN EMOTIONAL CLIMAX! A ROUSER!" —United Press.

BRIAN DONLEVY • MARTIN BROOKS  
**THE ANDERSONVILLE TRIAL**  
IN PERSON  
with SAM GRAY OWEN PAVITT

**SEATS NOW**

\$2.00 - \$2.50 - \$3.00 - 3.50  
\$4.00 - \$4.50

## MOVIE TIME

IN THE UNION PLAY CIRCLE

STARTS TODAY

**MARLON BRANDO**  
AND AN EXQUISITE NEW JAPANESE STAR.

**SAYONARA**



Filmed in TECHNICOLOR and presented by WARNER BROS.

10-STARING PATRICIA OWENS-RED BUTTONS-RICARDO MONTALBAN-MARTHA SCOTT-MIYOSHI UMEKI-JAMES GARNER

AND INTRODUCING MIKO TAKA PRODUCED BY WILLIAM GOETZ DIRECTED BY JOSHUA LOGAN

BASED ON THE NOVEL BY JAMES A. MICHENER SCREEN PLAY BY PAUL OSBORN Song "SAYONARA" Words and Music by IRVING BERLIN - Music by FRANK WATSON

Continuous from 12 noon

Call AL 5-9000 for Showtime

## GRAND OPENING

of the

**Pizza KING**

17 DIFFERENT VARIETIES

For Out of This World Pizza Pleasure

Half, third, or quarter combinations will be made to suit your tastes without extra charge.

HOURS: 4 P. M. 'til 2 A. M.

454 STATE ST.

AL 5-0315

**Hoffman House**

**Tonight's the Night**

or maybe . . .  
tomorrow night!

. . . the right time to dine at the Hoffman House . . . completely rebuilt and all new . . . sumptuous yet simple in its decor of charcoal and gold . . . finest foods prepared to your taste and at prices you can afford.

**Now Open**

**Hoffman House**

MADISON • ROCKFORD  
WISCONSIN DELLS





# In This Corner

By JERRY SHEA

## Latest Rumors

Our confidence was somewhat shaken by a disastrous prediction record (4 of 6) last week, but an aged seer has given us several inside tips on Saturday's contests. So armed with this information, we sally forth in quest of a perfect slate of guesses.

**PURDUE OVER INDIANA**—Not too much doubt about this one as the Hoosiers are about as punchless as some of Floyd Patterson's earlier opponents. Purdue may have a let-down after their victory over Minnesota, but as long as they don't have to fly to the game, the Boilermakers should prevail.

**NORTHWESTERN OVER ILLINOIS**—A tossup, but a native of Evanston has assured us that the 'Cats will win. Northwestern has a good line, fast backs and lovely cheerleaders (who all belong to sororities) and will dump the downstaters.

**IOWA OVER NOTRE DAME**—Speed and talent prevail over Irish guile and spirit. This has been a dismal season for the South Benders and the Big Ten champs are going to keep Irish eyes from smiling for another week. This is Evy's last game and Notre Dame fans will probably wish he had retired in the long distant past.

**MICHIGAN STATE OVER DETROIT**—The Titans are a good small college team, but the Spartans shouldn't have too much trouble showing them how things are in the Big Ten. The conference has a 17-1 record against outside opposition (only Indiana spoiled the mark) and State will make it 18-1.

**OHIO STATE OVER MICHIGAN**—Woody didn't win the championship this year, which makes it a poor season for him, but he still has the horses to down Michigan. A traditional battle like this might be close, but on form we go with the Buckeyes.

**WISCONSIN OVER MINNESOTA**—We just don't want to see a nice guy like Milt finish last in the league which could happen if the Badgers lose. The Gophers would normally win with ease but we have reliable information that some of the Rams are staying behind to suit up for Wisconsin. Rumor has it that Jon Arnett and Les Richter will disguise themselves as mild-mannered Badgers to aid the local cause.

**GREEN BAY OVER LOS ANGELES**  
**YALE OVER HARVARD**  
**MISSOURI OVER KANSAS**

### SIGMA XI TALK

The university's chief of geophysics studies, Prof. George P. Woollard, will be presented Tuesday in a Sigma Xi lecture open to the Madison public as well as members of the honorary science society. The talk, titled, "The Earth's Crust," will begin at 8 p.m. in Birge hall auditorium.

### DIWALI DINNER

The India association is sponsoring a Diwali dinner tomorrow at 6 p.m. in Great hall. The program includes a short speech by Dean Harrington and few cultural items after the dinner. A movie on Indian dances is also planned. The price for the dinner is \$2.50.

### CHAMBERLIN DORM CHAMPS

Chamberlin house (Kronshage), champions of the 1960 all-dorm football league, will play Minnesota's dorm champs tomorrow morning at 10:15 on intramural field 2. The twelve members of the Minnesota intramural team will arrive tonight along with three faculty members.

Members of Chamberlin's championship team will act as hosts for the Minnesota students, who will stay at Chamberlin house. After the intramural game, the Minnesota students will attend the Wisconsin-Minnesota game at Camp Randall.

The Minnesota-Wisconsin dorm intramural championship game is an annual game which is played on the day of the varsity encounter. Last year, Pyre house (Elm Drive) defeated Minnesota's dorm champs 12-0 at Minnesota.

## Miller, Bakken, Weisner Among League Leaders

Bob Ferguson, Ohio State full-back, continues to show the way in Conference rushing with a net gain of 480 yards in 98 rushes for a mark of 4.9. Ferguson's lead in rushing is being threatened by teammate Tom Matte, who has driven for 430 yards in the same number of contests.

Matte holds the No. 1 spot in the passing department and has come forward to present a threat to Wisconsin's Ron Miller in total offense, 871 yards against 903.

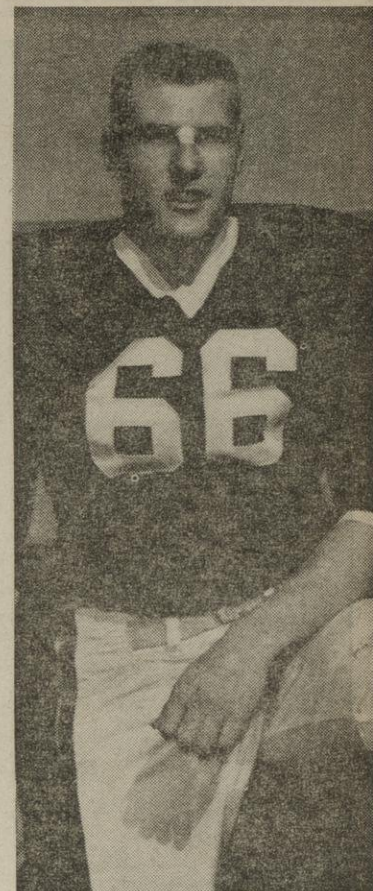
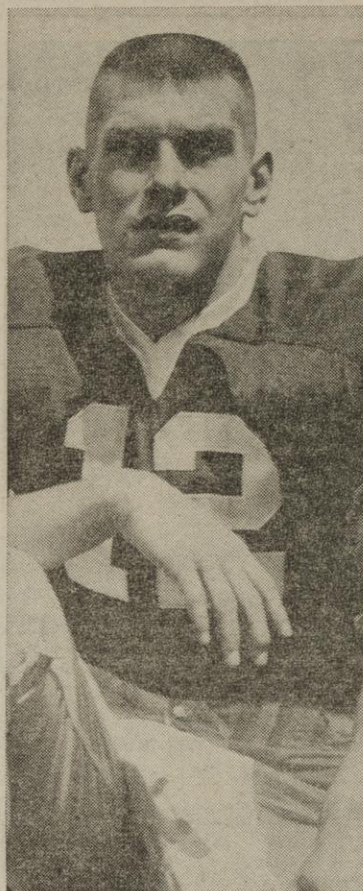
In the scoring division, Wilburn Hollis of Iowa held his lead with 48 points, but since the Hawkeyes have concluded their Conference season, Bob Ferguson of Ohio State has an excellent chance to overtake him.

Other Conference leaders also held their own last week, with Jim Bakken of Wisconsin in punting, 42.0; Gerry Mauren of Iowa in kickoff returns, 24.1; Bill Munsey of Minnesota in pass interceptions with three and Tom Wiesner of Wisconsin in pass receiving yardage, 276.

Marshall Starks of Illinois has taken over the punt return leadership with an average of 10.1 yards.

Friday, November 18, 1960

THE DAILY CARDINAL—1



Bowing out tomorrow after three years as Wisconsin gridders will be Butch Kellogg and Jerry Kulcinski. Kellogg, an end, has moved into a starting role this season after playing behind Hank Derleth in 1959. He has snared four passes for 45 yards this year from his right end position. Kulcinski has been a starter all season after playing two years behind guard Ron Perkins. He has won three letters in football and is an honor student in electrical engineering.



## AEROSPACE CORPORATION

are creating a climate conducive to significant scientific achievement

"Essentially, this corporation will be people—people of the highest quality. The United States Air Force recognizes that men of great scientific and technical competence can perform at their best only when they can exercise their initiative to the full under leadership which creates the climate for creativity. We expect Aerospace Corporation to provide that kind of environment."

### SECRETARY OF THE AIR FORCE

Among those providing their leadership to this new non-profit public service corporation are: Dr. Ivan A. Gettings, president; Allen F. Donovan, senior vice president, technical; Jack H. Irving, vice president and general manager, systems research and planning; Edward J. Barlow, vice president and general manager, engineering division; and Dr. Chalmers W. Sherwin,

vice president and general manager, laboratories division.

These scientist/administrators are now selecting the scientists and engineers who will achieve the mission of Aerospace Corporation: concentrating the full resources of modern science and technology on rapidly achieving those advances in missile/space systems indispensable to the national security.

The functions of Aerospace Corporation include responsibility for: advanced systems analysis; research and experimentation; initial systems engineering; and general technical supervision of new systems through their critical phases, on behalf of the United States Air Force.

Aerospace Corporation is already engaged in a wide variety of specific systems projects and research programs—offering scientists and engi-

neers the opportunity to exercise their full capabilities, on assignments of unusual scope, within a stimulating environment.

Immediate opportunities exist for MS and PhD candidates completing requirements in engineering, physics, and mathematics, and interested in:

- Theoretical Physics
- Experimental Physics
- Inertial Guidance
- Propulsion Systems
- Computer Analysis
- Applied Aerodynamics
- Space Communications

Those capable of contributing in these and other areas are invited to direct their resumes to:

Mr. James M. Benning, Room 138  
P.O. Box 95081, Los Angeles 45, Calif.

## Ski in Europe • Christmas Vacation

FOR ONLY \$580! (ALL INCLUSIVE)

FANTASTIC OPPORTUNITY TO SKI IN

DAVOS, SWITZERLAND  
ST ANTON, AUSTRIA

VISIT  
LISBON  
PARIS

FLY  
ROUND-TRIP  
IN LUXURIOUS  
DC-8 JETS

14 DAY  
STUDENT  
FACULTY TOUR

SKIING  
SIGHTSEEING  
ENTERTAINMENT

DEPART NEW YORK  
DECEMBER 22  
AND RETURN  
JANUARY 5

LAND TRANSPORTATION  
STANDARD HOTELS  
MEALS

SKI SCHOOLS

FOR  
INFORMATION  
AND BROCHURES  
WRITE:  
DEPT. S

ASETA TRAVEL, INC.

37 WEST 57 STREET, NEW YORK 19, N.Y. PLAZA 3-0976-7

A new and vital force



AEROSPACE CORPORATION

engaged in accelerating the advancement of space science and technology





**BADGER BEAUTIES**—These six coeds (left to right), Pat Reybold, Diane Kohlmetz, Joan Bradley, Pat Sinkler, Roanne Ringsmuth, and Jolly Clarkson were last year's Badger Beauties. The 1961 contest will begin Nov. 30, and applications are due next Wednesday.

**'J.B.'...**

(continued from page 1)  
was generous enough to allow the imagination of the audience to wander as does the place of the play—over "the roads of the world." Costumes were effective and poetic, lighting was poetic and impressive.

**PERHAPS IT** is a mark of hesitancy, but preferably it is the mark of discretion that an interpretation is left to the very end. Man seems to be a thing which cannot know the cause of the evils (if, indeed they can be called that), but can know that there

are such evils and that there are such causes. And he is tempted to rail forth a plea to be told what the reasons are.

But the difference between Voltaire and Job is that the latter is infinitely wiser in that he knows how little he really knows. To try to state more about what may call the theme of the play would be to attempt a greater work of art than MacLeish has produced in his "J.B."

**Platforms...**

(continued from page 1)  
ty rival, called the proposal for coeds to regulate their own rules, "highly desirable, but impractical."

Both chairmen commended O'Connell for his interest in student government, and for his proposals.

**Rev. R. Helverson To Give 1960 Billings Lecture**

The arguments against intelligence and the case for its defense will be posed Monday night in the annual Billings lecture.

The speaker will be Ralph N. Helverson, minister of First Parish (Unitarian), Cambridge, Mass., and his subject, "The Life of the Mind." The lecture is scheduled for 7:30 p.m. in Top-flight of the Union.

**SPONSORED** locally by Channing-Murray club, Helverson comes to Madison under the auspices of the American Unitarian association college centers committee which administers the Billings fund for lectures on college campuses. He is minister to the church that serves Unitarian students at Harvard.

Coincidentally Max Gaebler, minister of First Unitarian society here and president of the Unitarian Ministers' association, recently gave the 1960 Billings lecture at Harvard, his alma mater.

**Planetarium Sets 15th Lecture Today**

The galaxies will be the topic tonight when the Planetarium presents the fifth public lecture-demonstration in its fall program.

Under the darkened canvas "sky," guests will watch as a photo-projector "creates" the galaxies and William Reining tells about workings of these great systems of dust, gas, and stars.

The performance will begin promptly at 7:30 p.m. The Planetarium is housed on the roof of the east wing, Sterling hall.

**ANSWER TO PREVIOUS PUZZLE**

ASPS	CAGER	ECUS
CLEO	OVULO	LAVE
CADI	LEND	GRAM
OVER	FOND	ECARTE
MIS	ORON	ARIEL
ASTAR	ELEAN	ESE
CHAVEZ	RAVINE	
LENO	MILL	
COOGAN	SBLUFF	
CID	OTERO	AESIR
ORION	RAVEL	TRI
MORASS	CENSURES	
ONES	OLAND	PINK
REST	HORAE	ONZE
ORTS	OSIER	NEED

**Polling Booths Listed for Fall Election Tuesday**

Twenty-five candidates for positions on student governing bodies await the election next Tuesday, Nov. 22. Polling booths will be open at 8:30 a.m. on Tuesday and will close at 5 p.m. The polls in the Union, Memorial Library, and the Pine Room will remain open until 9:45 p.m.

Booths are located in Bascom hall, Commerce, Lathrop, Mechanical Engineering, Electrical Engineering, Union, Agriculture building, Home Economics building, Science hall, 600 North Park, Journalism, Education, Memorial library, Law, Sterling hall, Pine Room, Kronshage, Holt, Liz Waters, YMCA, Elm Drive, and Chadbourne.

The elections commission hopes everyone will feel a responsibility to vote and cast a vote for the individuals which they feel are the most qualified to assume roles of leadership on this campus. Each voter must present his fee card at the polls in order to vote.

ty to vote and cast a vote for the individuals which they feel are the most qualified to assume roles of leadership on this campus. Each voter must present his fee card at the polls in order to vote.

**PRO ARTE CONCERT**

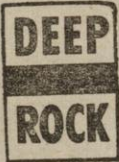
Works by Haydn, Schoenberg, and Brahms will be played by members of the University Pro Arte quartet in their next concert on Friday, Dec. 2, at 8 p.m. The public is invited to attend the program, scheduled for Music hall. The Haydn "Piano Trio in G Major, Opus 75, No. 1 will be played by violinist Rudolf Kolisch, violoncellist Lowell Creitz, and pianist Gunnar Johansen. The Schoenberg "String Trio, Opus 45," with Kolisch and Creitz joined by violist Richard Blum, will follow; and the three will be joined by Johansen again for the final work, Brahms' "Piano Quartet in G Minor, Opus 25."

**JET-A-WAY**

92+ OCTANE

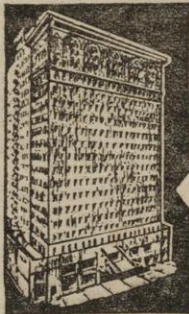
• 2709 Univ. Ave.  
• 1201 Regent

• 1002 E. Wash.  
• 1040 S. Park St.  
• 751 Williamson



TRY A  
TANKFUL and  
SAVE MONEY

**31.9c**  
Per Gal.  
PLUS STAMPS



**COMING TO CHICAGO FOR THE WEEKEND?**

Students (men or women), Couples, Families, Groups on Tour.

**STAY AT THE YMCA HOTEL**

• At the edge of the Loop

• Accommodations for 2,000

• Rates: \$2.50 and up

• For Reservations, write Dept. "R", 826 South Wabash Ave., Chicago 5, Ill.

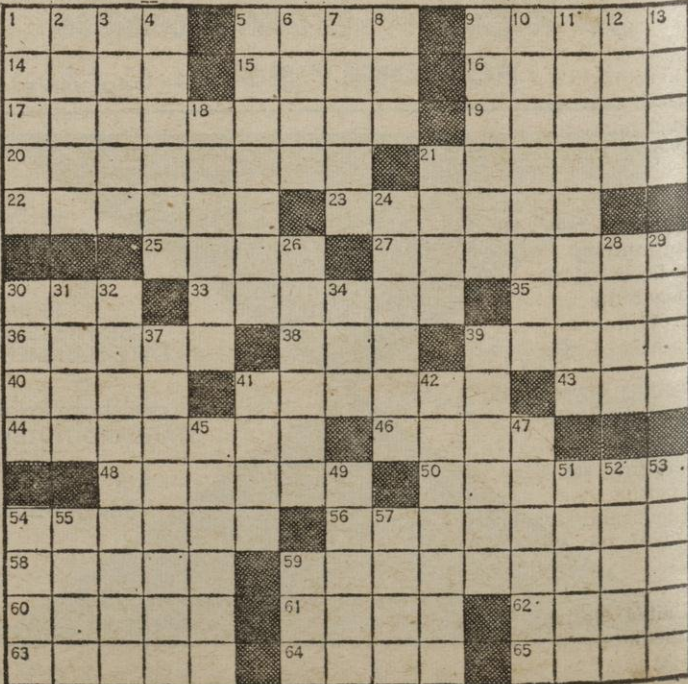
**Daily Crossword Puzzle**

- ACROSS**  
1 Barbed spear.  
5 Elwood P. in "Harvey."  
9 Clark of Hollywood.  
14 Unfounded.  
15 Concept.  
16 Dart.  
17 Deceptive ore; 2 words.  
19 Grin.  
20 Certain race-horses.  
21 Novelist Glyn.  
22 Jewish services.  
23 Farmer's job.  
25 Things known or assumed.  
27 Sample again.  
30 Counter.  
33 Key.  
35 Ruffle.  
36 Bring into agreement.  
38 Article.  
39 Honored name in South Africa.  
40 Cupid in art.  
41 Dance step.  
43 tee; 2 words.  
44 Receiver of a bequest.  
46 Pace.  
48 Lariats.

- 50 Grown-ups.  
54 Golfer's position.  
56 Fade away; 2 words.  
58 Whether (in either case): " words.  
59 Smoke.  
60 Of the sound phase, in TV.  
61 Related.  
62 Pack away.  
63 Poet of the Elizabethan period.  
64 Utmost.  
65 Conservative.

- DOWN**  
1 Donations.  
2 Worship.  
3 Deluge.  
4 Covered with fibrous cloth.  
5 Assimilates, as food.  
6 Fragrance.  
7 People of Cardiff.  
8 VIP in June.  
9 Illuminated in a certain way.  
10 Phrase for togetherness; 3 words.  
11 Makes clear; 2 words.

- 12 Native of Yunnan, China.  
13 Pitcher.  
18 Melody.  
21 Examined.  
24 Dillion of "Gunsmoke."  
26 Gibson, of tennis.  
28 European president.  
29 Mme. Schiaparelli.  
30 Semitic sun god.  
31 Egyptian dancing girl.  
32 Brownsville's river; 2 words.  
34 Cry of triumph.  
37 What fusel is; 2 words.  
39 Sowing machine.  
41 A whale.  
42 In heraldry, standing.  
45 Tic; 2 words.  
47 Clearest.  
49 Long nail.  
51 Game of chance.  
52 Teacher.  
53 Steamy; hot.  
54 Shampoo.  
55 Right.  
57 Shield; Var.  
59 Hansom.



**77 Sirloin Strip SUPPER CLUB**



**NEW YORK SIZZLIN SIRLOIN STRIP STEAK \$2.95**

**SAT. PRE GAME BUFFET LUNCHEON—featuring Prime Ribs**

TRANSPORTATION TO GAME

for reservation call  
**AL. 5-1702**

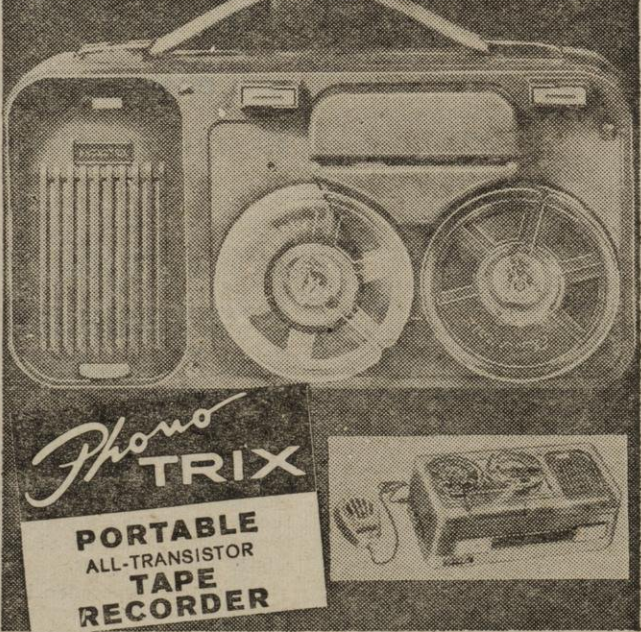
**FOR YOUR DINING PLEASURE AFTER THE GAME ENJOY OUR SPECIAL SIRLOIN STRIP STEAK**

**DINNER HOURS**  
5:30 p.m. - 10:30 p.m.  
**SUNDAY DINING HOURS**  
4:00 p.m. 'til 10:30 p.m.

Banquet Room Available  
For all occasions

Located on Badger Rd.  
2 Blks East of So. Park St.

**TAPE IT ANYWHERE**



**PORTABLE ALL-TRANSISTOR TAPE RECORDER**  
Weights just 4 pounds • Operates 50 hours on 4 flashlight batteries • Gives up to 90 minutes recording time on standard 3" reels of tape • Size—9" x 5" x 4 1/4" — **MARK II**  
Great for family fun and gifts. Ideal for business and professional use.  
**COME IN AND TRY IT TODAY!**

**79.95**

Self-contained in shock-resistant plastic case. Includes microphone, built-in speaker, 3" reel of tape and take-up reel.

**THE HI FI CORNER**

401 State St.

AL 6-0267