

Eli Lilly's Digiglusin advertisement.

[s.l.]: [s.n.], 1927

<https://digital.library.wisc.edu/1711.dl/25GXUBJLJS3U29B>

<http://rightsstatements.org/vocab/InC/1.0/>

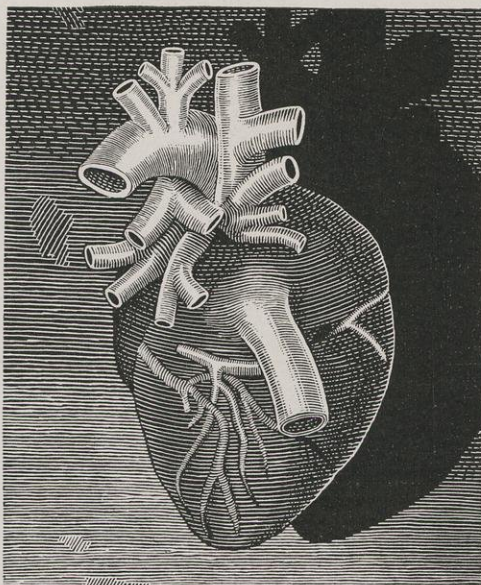
The libraries provide public access to a wide range of material, including online exhibits, digitized collections, archival finding aids, our catalog, online articles, and a growing range of materials in many media.

When possible, we provide rights information in catalog records, finding aids, and other metadata that accompanies collections or items. However, it is always the user's obligation to evaluate copyright and rights issues in light of their own use.

ELI LILLY AND COMPANY

FOUNDED 1876

Makers of Medicinal Products



DIGIGLUSIN

(Digitalis Glucosides, Lilly)

The cat method of assay of digitalis preparations and the expression of their potency in cat units are favored by many specialists in cardiac disorders who approve of the testing of these products on a warm-blooded animal.

'Digiglusin' contains the total therapeutically active glucosidal principles of prime digitalis leaf. It is stable and of uniform strength. 'Digiglusin' products are standardized by the cat method of Hatcher and Brody.

Tablets 'Digiglusin' are supplied in strengths of 1/2, 1, 1 1/2, and 2 cat units in packages of 40 and 500. Liquid 'Digiglusin,' and Ampoules 'Digiglusin' are also available.

Prompt Attention Given to Professional Inquiries

PRINCIPAL OFFICES AND LABORATORIES, INDIANAPOLIS, INDIANA, U. S. A.