



LIBRARIES
UNIVERSITY OF WISCONSIN - MADISON

Smith Kline Surgical Specialties advertisement.

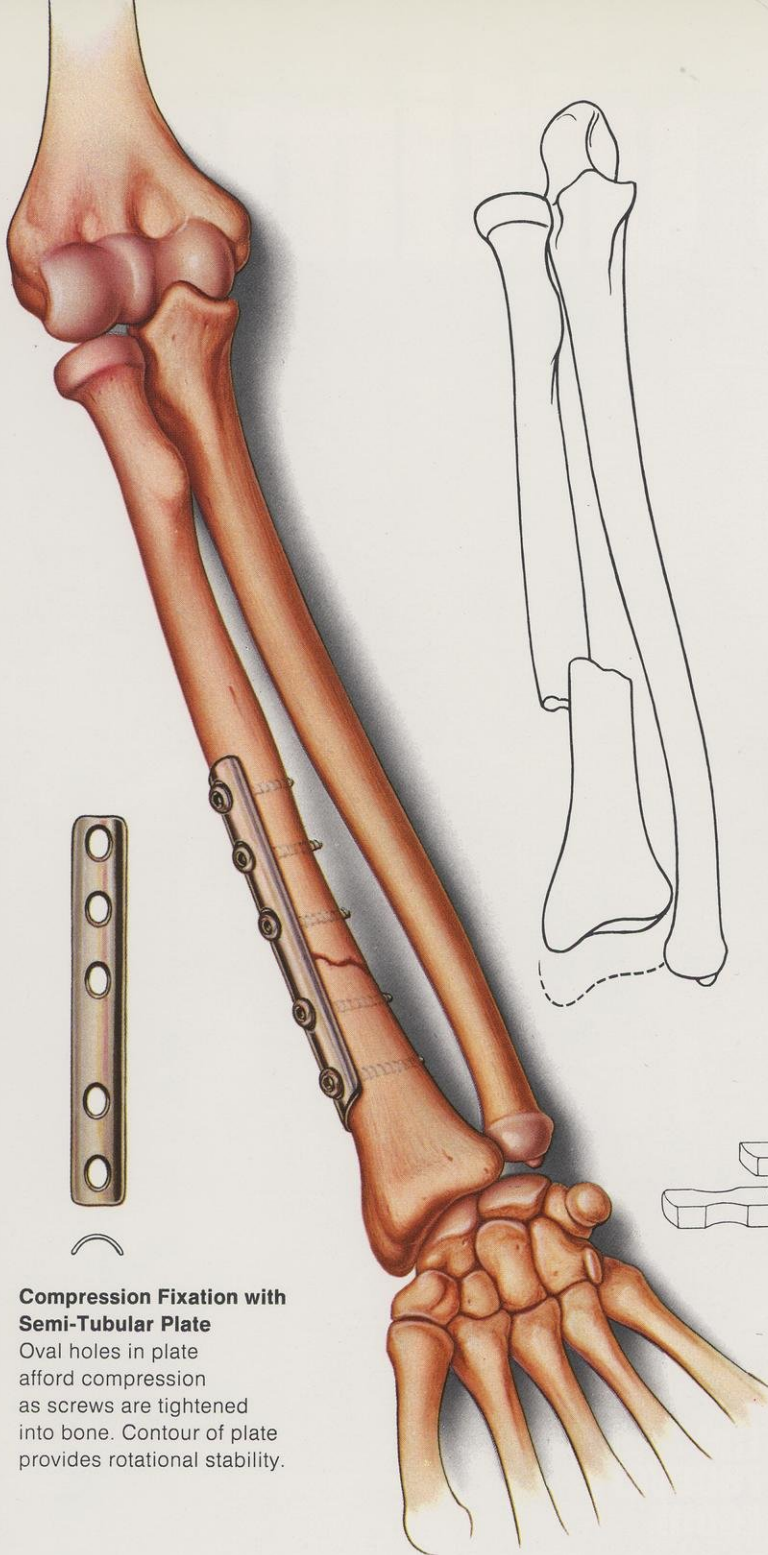
[s.l.]: [s.n.], 1969

<https://digital.library.wisc.edu/1711.dl/XWXMB55K6QGZX8E>

<http://rightsstatements.org/vocab/InC/1.0/>

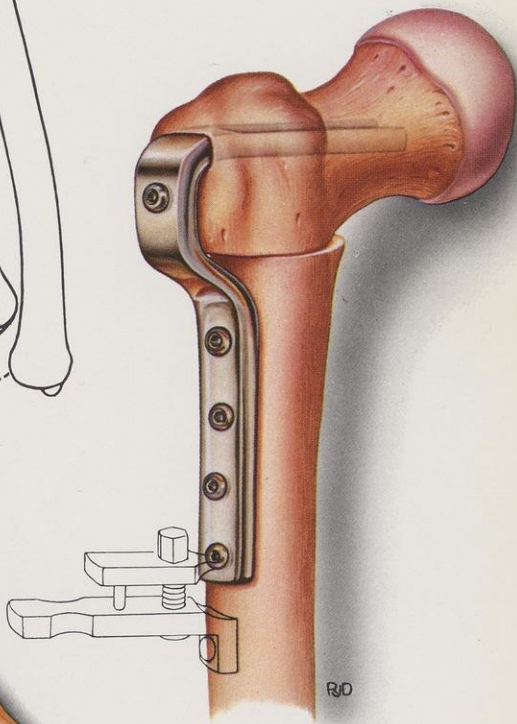
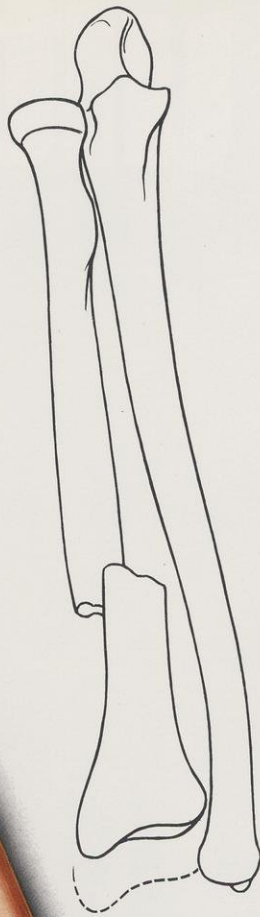
The libraries provide public access to a wide range of material, including online exhibits, digitized collections, archival finding aids, our catalog, online articles, and a growing range of materials in many media.

When possible, we provide rights information in catalog records, finding aids, and other metadata that accompanies collections or items. However, it is always the user's obligation to evaluate copyright and rights issues in light of their own use.



Compression Fixation with Semi-Tubular Plate

Oval holes in plate afford compression as screws are tightened into bone. Contour of plate provides rotational stability.



Compression Fixation in Displacement Osteotomy

Rigid fixation permits early non-weight-bearing exercise. Osteotomy plates available in 10, 15, 20 mm displacements and variety of angles to allow for precise positioning.

SMITH KLINE SURGICAL SPECIALTIES

For information, write to:
Smith Kline Surgical Specialties
1500 Spring Garden Street
Philadelphia, Pa. 19101

In Canada:
Smith Kline Surgical Specialties
2755 Thamesgate Drive
Mississauga (Toronto), Ontario

In Great Britain:
Smith Kline Surgical Specialties
Welwyn Garden City
Hertfordshire, England