



LIBRARIES

UNIVERSITY OF WISCONSIN-MADISON

Site 1000: Pedee Woods, Green County, Township 1N, Range 9E, Section 21. 1948-05-16

[s.l.]: [s.n.], 1948-05-16

<https://digital.library.wisc.edu/1711.dl/IOLOPMGUDVDIC8P>

This material may be protected by copyright law (Title 17, US Code).

For information on re-use see:

<http://digital.library.wisc.edu/1711.dl/Copyright>

The libraries provide public access to a wide range of material, including online exhibits, digitized collections, archival finding aids, our catalog, online articles, and a growing range of materials in many media.

When possible, we provide rights information in catalog records, finding aids, and other metadata that accompanies collections or items. However, it is always the user's obligation to evaluate copyright and rights issues in light of their own use.

1000

Stand No: 100 Name: *Pedee Woods*
 County: *Green - Spring Grove* T: *1N* R: *9E* Sec: *21* *sw 1/4* Locality: *Pedee*
 Date: *May 16, 48* Observers: *Asme.*
 Size of Stand: *25 acres* Size of Area Sampled: *20 pts - 20 4m quad.*
 Forest Type: *Maple Basswood* Soil Type: *Knox loam*
 Topography: *Level or nearly so with a slightly lower area in the NE portion.*
 Condition of Stand: *Excellent - some cutting apparently of poorer trees for firewood*

Open Grown Trees:

Stumps:

1.	6.
2.	7.
3.	8.
4.	9.
5.	10.

Soil

*Nasample.**Partch has sample (Gr-19)*

Sample No:	pH	N	P	K	Colloids	Vol/wt	WHC
A₀ <i>A₁ 4.5</i>	<i>7.0</i>	—	<i>50</i>	<i>280</i>	—	—	—
<i>A₁ A₂ 3.5</i>	<i>5.8</i>	—	<i>10</i>	<i>150</i>	—	—	—
A₂ <i>4.8</i>	<i>4.8</i>	—	<i>90</i>	<i>200</i>	—	—	<i>53.1</i>

Depth

Characteristics (Color, texture, etc.)

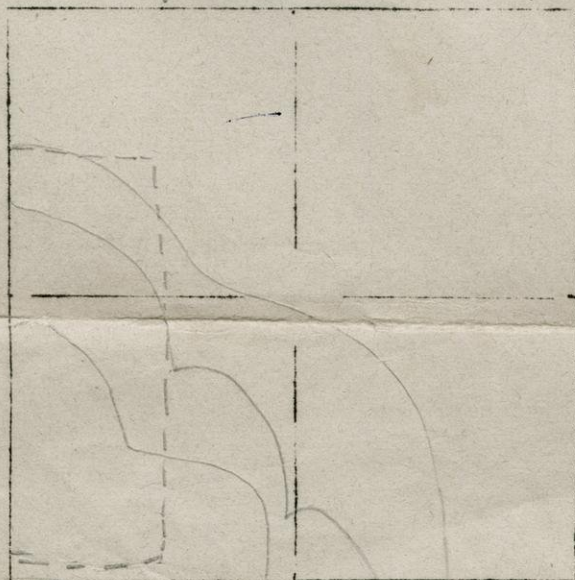
A₀ _____A₁ *4.5*A₂ *3.5*

B _____

Parent Material:

Remarks:

2 very large 100" & 110" C white oaks were observed in the woods.
780" Basswood Stump
Sprout

Map *SW 1/4*

K

1948

Tree	# Pts	# Tr.	Size Cl. sq. in. -80:-320:-321	Dom.	# Sap	# Seed	F.% Seed	F.% Tr.	D.% Tr.	Dom % Tr.	D F D Index	C.I.	Station No.
Acer rubrum													Total Length of Transect.
A. sacchar.	14	19	$\frac{8}{279}$ $\frac{11}{2038}$	2317	11	55	41.2	47.5	49.3	138	1380		Total Area of Transect.
Carya cord.					2	10							Ave. Dist. Btw'n Trees
C. ovata													Saplings/unit area
Fagus gran.													Ave. BA (Total BA = 86)
Fraxinus am													117.3 58. in.
F. penn.													No. Trees/acre
Juglans cin													Dom./acre
J. nigra													
Ostrya vir.	3	3	$\frac{3}{67}$	61			8.8	7.5	1.4	18	144		
Populus gr.													
P. tremuloi						2	10						
Prunus sero													
Quercus al.													
Q. macrocar													
Q. rubra	3	3	$\frac{3}{669}$	669	1	5	8.8	7.5	14.3	31	186		
Q. velutina													
Tilia amer.	2	2	$\frac{2}{907}$	907	1	5	5.9	5.0	19.3	30	225		
Ulmus amer.													
U. fulva	12	13	$\frac{10}{42}$ $\frac{3}{317}$	738	6	30	35.3	32.5	15.7	83	581		
					1	5							
Totals			$\frac{80}{761}$ $\frac{21}{3024}$ $\frac{2}{907}$	4692			✓	✓	✓	✓	2516		

[illegible]

Hardwood Survey (Cont'd)

[illegible]

[illegible]

[illegible]

Temp

TOO 20P-20q
Sec 21 - Spring Grove - Green
May 16, 48

7.
Frederick

7.
BA

Station No.	1	2	3	4	5	6	7	8	9	10	11	12	13	14	15	16	17	18	19	20		
Trees:																						
Acer negundo																						
A. rubrum																						
A. saccharinum																						
A. saccharum	23	S	12.5	S	54	48-42		12	12.5	25	12	31	28	56	40	43	52	38	5	39	5	90% 49.3
Betula lutea																						
B. nigra																						
B. papyrifera																						
Carpinus carol.																						
Carya cordiform.		S																S			10	
C. ovata																						
Celtis occident.																						
Crataegus sp.																						
Fagus grandif.																						
Fraxinus americ.																						
F. nigra																	S				5	
F. pennsylvanica																						
Gleditsia tria.																						
Gymnocladus dio.																						
Juglans cinerea																						
J. nigra																						
Ostrya virgin.											18							15	15		15% 1.4%	
Platanus occid.																						
Populus deltoid.																						
P. grandident.																						
P. tremuloides																						
Prunus american.																						
P. pennsylvan.																						
P. serotina																	S		S		10	
P. virginiana																						
Quercus alba																						
Q. bicolor																						
Q. ellipsoid.																						
Q. macrocarpa																						
Q. rubra					50			60	48					S							200 14.3%	
Q. velutina																						
Robinia pseudo.																						
Salix nigra																						
Sorbus americana																						
Tilia americana								76													15 19.3%	
Ulmus americana																						
U. fulva	16	15	24	29	5	19	40	34	29	13	5										85% 15.7%	
U. thomasi																						
Shrubs & Herbs:																						
Actaea sp.																						
Adiantum pedat.																						
Agrimonia gryp.																						
Aletris farin.																						
Allium canad.																						
A. tricoccum																						
Amelanchier sp.																						
Amphicarpa brac.																						
A. b. v. comosa																						
Anaphalis marg.																						
Anemone cylindr.																						
A. quinquefolia																						
A. virginiana																						
Anemonella thal.																						
Antennaria sp.																						
Aplectrum hiem.																						
Apocynum andros.																						
Aquilegia cana.																						
Arabis canadens.																						
A. laevigata																						

t. v. area

<i>A. saccharum</i>	-	2314.35
<i>Ostrya</i>	-	61.58
<i>Q. rubra</i>	-	668.77
<i>Tilia</i>	-	907.29
<i>U. fulva</i>	-	739.52

4691.51

Station No. -1000-	1	2	3	4	5	6	7	8	9	10	11	12	13	14	15	16	17	18	19	20	
A. lyrata																					
A. perstellata																					
Aralia hispida																					
Aralia nudicaul.																					
A. racemosa																					
Arenaria laterif.																					
Arisaema atrop.	✓	✓	✓	✓			✓	✓	✓	✓									✓		45%
A. draconium																					
Asarum canad.																					
Asclepias ovalif.																					
A. phytolaccoides																					
Aster azureus																					
A. macrophyllus																					
A. paniculatus																					
A. sagittifolius																					
A. shortii												✓									5%
Athyrium angust.																			✓		5%
Aureolaria gran.																					
Besseyia bullii																					
Boehmeria cylin.																					
Botrychium multif. v. intermedium																					
B. virginianum												✓	✓	✓	✓	✓	✓				30%
Brachyelytrum er.																					
Campanula americ.																					
Castilleja coccin.																					
X Caulophyllum thal.																					
Ceanothus americ.																					
Celastrus scand.																					
Chimaphila umbel.																					
X Circaea latifolia																					
Cirsium altissim.																					
X Claytonia virg.																					
Celmatis virgin.																					
Clintonia boreal.																					
Comandra umbell.																					
Conopholis amer.																					
Corallorrhiza mac.																					
C. odontorrhiza																					
X Cornus alternif.																			✓		5%
C. femina																					
C. rugosa																					
Corydalis semper.																					
Corylus americana																					
Cryptotaenia can.																					
Cynoglossum virg.																					
Cypripedium pub.																					
Cystopteris bulb.																					
C. fragilis																					
X Dentaria lacin.																					
Desmodium acumin.																					
D. bracteosum																					
D. canadense																					
D. nudiflorum																					
Dicentra canad.																					
D. cucullaria																					
Diervilla lonic.																					
Dioscorea villosa																					
Dodecatheon mead.																					
Ellisia nyctelea																					
Erigeron philadel.																					
E. pulchellus																					
Erythronium alb.												✓	✓	✓	✓	✓	✓	✓	✓		50%
E. americanum																					
Eupatorium pur.																					

Station No.	1	2	3	4	5	6	7	8	9	10	11	12	13	14	15	16	17	18	19	20
E. rugosum																				
Evonymus atrop.																				
Festuca obtusa																				
Floorkea proserp.																				
Fragaria vesca																				
F. v. var. amer.																				
F. virginiana																				
Galium aparine																				10%
G. circaezans																				
G. concinnum																				45%
G. lanceolatum																				
G. triflorum																				
Gaultheria proc.																				
Gaylussacia bacc.																				
Gentiana quinq.																				
Geranium maculat.																				5%
Geum canadense																				
G. virginianum																				
Goodyera pubesc.																				
Habenaria bract.																				
H. hookeri																				
Hamamelis virg.																				
Hedeoma hispida																				
Helianthus strum.																				
Hepatica acutil.																				
H. americana																				
Heuchera richard																				
Hieracium canad.																				
H. scabrum																				
Hydrastic canad.																				
Hydrophyllum vir.																				25%
Hypoxis hirsuta																				
Hystrix patula																				
Imatiens biflor																				
I. pallida																				35%
Isopyrum bitern.																				
Juncus tenuis																				
Krigia biflora																				
Lactuca spicata																				
Laporteia canad.																				
Lappula virgin.																				
Lilium philadel.																				
Liparis liliif.																				
Lobelia cardin.																				
Lonicera dioica																				
L. prolifera																				
Luzula acuminata																				
L. multiflora																				
Lysimachia quad-																				
rifolia																				
Maianthemum can.																				
Menispermum can.																				
Mitchella repens																				
Mitella diphylla																				
Monarda fistul.																				
Onoclea sensib.																				
Orchis spectab.																				15%
Oryzopsis asper.																				
O. racemosa																				
Osmorhiza clayt.																				30%
O. longistylis																				
Osmunda cinnam.																				
O. claytoniana																				
Oxalis violacea																				50%
Panax quinquef.																				

[illegible]

Hardwood Survey (cont'd)

p. 5

Station No. 1000	1	2	3	4	5	6	7	8	9	10	11	12	13	14	15	16	17	18	19	20	
<i>Trillium cernuum</i>																					
<i>T. flexipes</i>																					
<i>T. grandiflorum</i>																					
<i>T. recurvatum</i>	✓	✓	✓	✓	✓			✓	✓				✓		✓	✓	✓	✓			60%
<i>Triosteum perf.</i>																					
<i>Uvularia grandif.</i>			✓															✓			10%
<i>U. sessilifolia</i>																					
<i>Vaccinium canad.</i>																					
<i>Veronica serpyll.</i>																					
<i>Veronicastrum vir.</i>																					
<i>Viburnum acerifol.</i>																					
<i>V. affine</i>																					
<i>V. lentago</i>																					
<i>V. trilobum</i>																					
<i>Vicia americana</i>																					
<i>Viola cucullata</i>	✓				✓				✓	✓	✓	✓	✓					✓			40%
<i>V. incognita</i>																					
<i>V. pubescens</i>	✓	✓		✓	✓	✓	✓	✓	✓	✓	✓	✓	✓	✓	✓	✓	✓	✓	✓		65%
<i>Vitis aestivalis</i>																					
<i>V. a. var. argent.</i>																					
<i>V. riparia</i>																					
<i>Zanthoxylum amer.</i>																					
<i>Aster lateriflorus</i>																					
<i>Carex sp. broad leaved</i>												✓						✓			10%
<i>Carex sp.</i>																					
<i>Thaspium aureum</i>	✓				✓				✓	✓	✓	✓	✓	✓	✓	✓	✓				30%

1000

HARDWOOD SURVEY

I Spring Grove Sec. 8.

Station No.	1	2	3	4	5	6	7	8	9	10	11	12	13	14	15	16	17	18	19	20
Trees:																				
Acer negundo																				
A. rubrum																				
A. saccharinum																				
A. saccharum	23	12	54																	
Betula lutea																				
B. nigra																				
B. papyrifera																				
Carpinus carol.																				
Carya cordiform.																				
C. ovata																				
Celtis occident.																				
Crataegus sp.																				
Fagus grandif.																				
Fraxinus americ.																				
F. nigra																				
F. pennsylvanica																				
Gleditsia tria.																				
Gymnocladus dio.																				
Juglans cinerea																				
J. nigra																				
Ostrya virgin.																				
Platanus occid.																				
Populus deltoid.																				
P. grandident.																				
P. tremuloides																				
Prunus american.																				
P. pennsylvan.																				
P. serotina																				
P. virginiana																				
Quercus alba																				
Q. bicolor																				
Q. ellipsoid.																				
Q. macrocarpa																				
Q. rubra																				
Q. velutina																				
Robinia pseudo.																				
Salix nigra																				
Sorbus americana																				
Tilia americana																				
Ulmus americana																				
U. fulva	16	29	40	34	27															
U. thomasi																				

Shrubs & Herbs:

- Actaea sp.
- Adiantum pedat.
- Agrimonia gryp.
- Aletris farin.
- Allium canad.
- A. tricoccum
- Amelanchier sp.
- Amphicarpa brac.
- A. b. v. comosa
- Anaphalis marg.
- Anemone cylindr.
- A. quinquefolia
- A. virginiana
- Anemonella thal.
- Antennaria sp.
- Aplectrum hiem.
- Apocynum andros.
- Aquilegia cana.
- Arabis canadens.
- A. laevigata

1 3 5 7 9 11 13 15 17 19

pasture
edge

[illegible]

1000

[illegible]

[illegible]

Station No. 1000

Trillium cernuum

T. flexipes

T. grandiflorum

T. recurvatum

Triosteum perf.

Uvularia grandif.

U. sessilifolia

Vaccinium canad.

Veronica serpyll.

Veronicastrum vir.

Viburnum acerifol.

V. affine

V. lentago

V. trilobum

Vicia americana

Viola cucullata

V. incognita

V. pubescens

Vitis aestivalis

V. a. var. argent.

V. riparia

Zanthoxylum amer.

Aster lateriflorus

Corynephorus

I- On E-W slope - lower side Maybe more Sarcocolla & Basswood
Little cloning - only one Podophyllum clump
Some cutting - stump old - hollow - considerable
slipping elm & hackberry

II Flat Heavy Maple - Elm seedling
cutting evident - very little myrtles
some cloning
w/ large open ground 87" - 112"
1st count 180-190? w/ small hollow

Field
Record

Sec. VIII Springgrove
2 Springgrove

HARDWOOD SURVEY

Sec 21 Springgrove I
Peder 1000

Station No.	1	2	3	4	5	6	7	8	9	10	11	12	13	14	15	16	17	18	19	20
Trees:																				
Acer negundo																				
A. rubrum																				
A. saccharinum																				
A. saccharum	5	19	30	55	24	5	1	33	33	32	5	5	48	12	12	5	5	5	5	5
Betula lutea																				
B. nigra																				
B. papyrifera																				
Carpinus carol.																				
Carya cordiform.																				
C. ovata																				
Celtis occident.																				
Crataegus sp.																				
Fagus grandif.																				
Fraxinus americ.																				
F. nigra																				
F. pennsylvanica																				
Gleditsia tria.																				
Gymnocladus dio.																				
Juglans cinerea																				
J. nigra																				
Ostrya virgin.																				
Platanus occid.																				
Populus deltoid.																				
P. grandident.																				
P. tremuloides																				
Prunus american.																				
P. pennsylvan.																				
P. serotina																				
P. virginiana																				
Quercus alba																				
Q. bicolor																				
Q. ellipsoid.																				
Q. macrocarpa																				
Q. rubra																				
Q. velutina																				
Robinia pseudo.																				
Salix nigra																				
Sorbus americana																				
Tilia americana																				
Ulmus americana																				
U. fulva	5	22																		
U. thomasii																				

Shrubs & Herbs:

- Actaea sp.
- Adiantum pedat.
- Agrimonia gryp.
- Aletris farin.
- Allium canad.
- A. tricoccum
- Amelanchier sp.
- Amphicarpa brac.
- A. b. v. comosa
- Anaphalis marg.
- Anemone cylindr.
- A. quinquefolia
- A. virginiana
- Anemonella thal.
- Antennaria sp.
- Aplectrum hiem.
- Apocynum andros.
- Aquilegia cana.
- Arabis canadens.
- A. laevigata

2 4 6 8 10 12 14 16 18 20

521
1000

Station No.	1	2	3	4	5	6	7	8	9	10	11	12	13	14	15	16	17	18
<i>A. lyrata</i>																		
<i>A. perstellata</i>																		
<i>Aralia hispida</i>																		
<i>Aralia nudicaul.</i>																		
<i>A. racemosa</i>																		
<i>Arenaria laterif.</i>																		
<i>Arisaema atror.</i>																		
<i>A. dracontium</i>																		
<i>Asarum canad.</i>																		
<i>Asclepias ovalif.</i>																		
<i>A. phytolaccoides</i>																		
<i>Aster azureus</i>																		
<i>A. macrophyllus</i>																		
<i>A. paniculatus</i>																		
<i>A. sagittifolius</i>																		
<i>A. shortii</i>																		
<i>Athyrium angust.</i>																		
<i>Aureolaria gran.</i>																		
<i>Besseyia bullii</i>																		
<i>Boehmeria cylin.</i>																		
<i>Botrychium multif.</i>																		
<i>v. intermedium</i>																		
<i>B. virginianum</i>																		
<i>Brachyelytrum er.</i>																		
<i>Campanula americ.</i>																		
<i>Castilleja coccin.</i>																		
<i>Caulophyllum thal.</i>																		
<i>Ceanothus americ.</i>																		
<i>Celastrus scand.</i>																		
<i>Chimaphila umbel.</i>																		
<i>Circaea latifolia</i>																		
<i>Cirsium altissim.</i>																		
<i>Claytonia virg.</i>																		
<i>Celmatis virgin.</i>																		
<i>Clintonia boreal.</i>																		
<i>Comandra umbell.</i>																		
<i>Conopholis amer.</i>																		
<i>Corallorrhiza mac.</i>																		
<i>C. odontorrhiza</i>																		
<i>Cornus alternif.</i>																		
<i>C. femina</i>																		
<i>C. rugosa</i>																		
<i>Corydalis semper.</i>																		
<i>Corylus americana</i>																		
<i>Cryptotaenia can.</i>																		
<i>Cynoglossum virg.</i>																		
<i>Cypripedium pub.</i>																		
<i>Cystopteris bulb.</i>																		
<i>C. fragilis</i>																		
<i>Dentaria lacin.</i>																		
<i>Desmodium acumin.</i>																		
<i>D. bracteosum</i>																		
<i>D. canadense</i>																		
<i>D. nudiflorum</i>																		
<i>Dicentra canad.</i>																		
<i>D. cucullaria</i>																		
<i>Diervilla lonic.</i>																		
<i>Dioscorea villosa</i>																		
<i>Dodecatheon mead.</i>																		
<i>Ellisia nyctelea</i>																		
<i>Erigeron philadel.</i>																		
<i>E. pulchellus</i>																		
<i>Erythronium alb.</i>																		
<i>E. americanum</i>																		
<i>Eupatorium pur.</i>																		

[illegible]

[illegible]

1.2

C.2

1949 Brown, J.C. - R.M.C.

Tree	# Pts	# Tr.	Size Cl. sq. in.	# Dom.	# Sap.	# Seed.	F.% Tr.	F.% Tr.	D.% Tr.	Dom % Tr.	D F D Index	CT	Station No.
Acer rubrum													1000
A. sacchar.	13	17	$\frac{7}{251}$ $\frac{10}{1546}$ $\frac{1}{780}$	1797	6	15	25	41.6	42.5	35.0	118	1180	Total Length of Transect. 381.5
Carya cord.	1	1	$\frac{1}{24}$	24	2	10	3.1	2.5	.5	6	51		Total Area of Transect 1259.0
C. ovata													Ave. Dist. Btw'n Trees 19.1
Fagus gran.													Saplings/unit area
Fraxinus am													
F. penn.													
Juglans cin	2	2	$\frac{1}{70}$	$\frac{1}{785}$ 525			62	5.0	10.2	21	105		Ave. BA (Total BA 40) 128.1 sq. in.
J. nigra													No. Trees/acre 119
Ostrya vir.	4	5	$\frac{5}{142}$	142			12.5	12.5	2.8	28	224		Dom./acre 15244
Populus gr.													
P. tremuloi													
Prunus sero													
Quercus al.													
Q. macrocar													
Q. rubra	3	4	$\frac{3}{777}$ $\frac{3}{227}$ $\frac{1}{321}$	1048			74	10.0	20.4	40	240		
Q. velutina													
Tilia amer.	5	6	$\frac{3}{767}$ $\frac{2}{385}$ $\frac{1}{780}$	1332	1	3	15	15.7	15.0	26.0	57	427	
Ulmus amer.													
U. fulva	4	5	$\frac{4}{176}$ $\frac{1}{178}$	264	3	15	12.5	12.5	5.1	30	210		
Crataegus					1	5							
Totals	40	21	$\frac{16}{770}$ $\frac{3}{2776}$ $\frac{3}{1586}$	5132	7		162	✓	✓	✓	✓	2437	

IN

1948 (22)

Tree	No. Pts.	No. Tr.	Size Class	sq. in.	No. Dom.	No. Sap.	F.% Seed	F.% Seed	D.% Tr.	D.% Tr.	Dom.% Trees	D.F.D. Index	Station No.
			12-80	81-320	321+								1000
Acerrubrum													Total Length of Transect <u>Not Avail.</u>
A. saccharum	14	19	8 279	11 2038	23	2	55	41.2	47.5	49.3	138	1380	Total Length of Transect <u>Not Avail.</u>
Carya cord.							2	10					Total Length of Transect <u>Not Avail.</u>
C. ovata													Ave. Dist. Btw'n Trees <u>Not Avail.</u>
Fagus grand.													Saplings/unit area <u>Not Avail.</u>
Fraxirus amar.													Ave. BA (Total BA) <u>Not Avail.</u>
F. pennsylvani.													117.3 sq in.
Juglans cinere.													No. Trees/acre
J. nigra													Dom./acre
Ostrya virgin.	3	3	3 61		61			88	7.5	1.4	28	144	
Populus grand.													
P. tremuloides							2	10					
Prunus serotina													
Quercus alba													
Q. macrocarpa													
Q. rubra	3	3		669	669	1	5	88	7.5	14.3	31	186	
Q. velutina													
Tilia americana	2	2		707	907	1	5	59	5.0	19.3	30	225	
Ulmus americana													
U. fulva	12	13	10 421	3 312	238	6	30	353	32.5	15.7	83	681	
Fraxinus nigra						1	5						
Totals			80+ 761	21+ 3024	17+ 1692	2 907							2516

add 1948 20pts + 1949 20pts

Tree	# Pts	# Tr.	Size Cl. sq in -80: -320: 321: Dom.	# Sap.	# Seed	F.% Seed	F.% Tr.	D.% Tr.	Dom % Tr.	D F D Index	Station No.
Acer rubrum											1000
A. sacchar.	27	36	$\frac{15}{530}$ $\frac{21}{3584}$	404			40.9	45.0	41.9	127.8	1278
Carya cord.	1	1	$\frac{1}{24}$	24			1.5	1.25	.2	2.9	24
C. ovata											
Fagus gran.											
Fraxinus am											
F. penn.											
Juglans cin	2	2	$\frac{1}{40}$	40	525		3.0	2.50	5.3	10.8	70
J. nigra											
Ostrya vir.	7	8	$\frac{8}{203}$	203			10.6	10.0	2.1	22.7	182
Populus gr.											
P. tremuloi											
Prunus sero											
Quercus al.											
Q. macrocar											
Q. rubra	6	7	$\frac{6}{1396}$ $\frac{1}{321}$	1717			9.1	8.25	17.5	35.3	212
Q. velutina											
Tilia amer.	7	8	$\frac{3}{167}$ $\frac{2}{385}$ $\frac{3}{1687}$	2239			10.6	10.0	22.8	43.4	325
Ulmus amer.											
U. fulva	16	18	$\frac{14}{576}$ $\frac{4}{435}$	1002			24.8	22.5	10.2	56.9	398
Crataegus											
Fraxnigra.											
Totals	80		$\frac{42}{1540}$ $\frac{33}{5800}$ $\frac{5}{2493}$	9824			✓	✓	✓	✓	2489

Total Length of
Transect.Total Area of
Transect.Ave. Dist. Btw'n
Trees

Saplings/unit area

Ave. BA (Total BA=80)

No. Trees/acre

Dom./acre

19.1' 20pts only.

122.8
138
16,946 sq in.

1000

Stand No: 1000

Name: Pelee woods

County: Green

T: 1N

R: 9E

Sec: 21

Locality:

Date: May 7, 1949

Observers: R Brown, J.C. RMC

Size of Stand:

Size of Area Sampled: 20 ft x 20 m quad.

Forest Type:

Soil Type:

Topography:

Condition of Stand:

Open Grown Trees:

Stumps:

- | | |
|----|-----|
| 1. | 6. |
| 2. | 7. |
| 3. | 8. |
| 4. | 9. |
| 5. | 10. |

Soil

Sample No:	pH	N	P	K	Colloids	Vol/wt	WHC
A ₀ _____	—	—	—	—	—	—	—
A ₁ _____	—	—	—	—	—	—	—
A ₂ _____	—	—	—	—	—	—	—
Depth	Characteristics (Color, texture, etc.)						

A₀_____A₁_____A₂_____

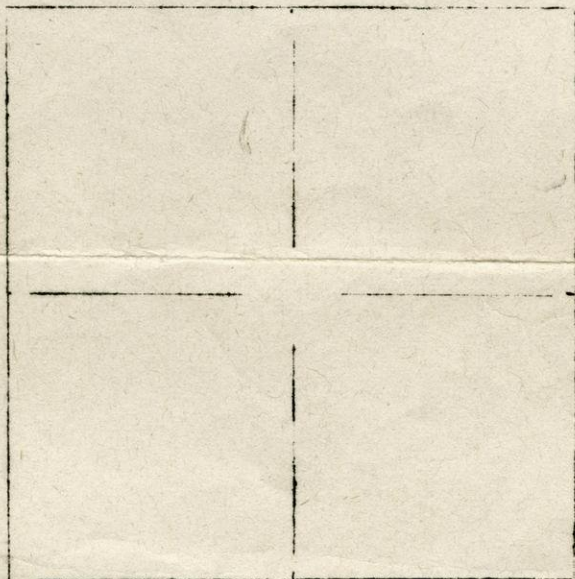
B _____

Parent Material:

Remarks:

780" Basswood
Stump Sprout.

Map



7.5

1949 Brown, JTC - RNK

Tree	# Pts	# Tr.	Size Cl. sq. in. -80:-320:-321	Dom.	# Sap	# Seed	F.% Seed	F.% Tr.	D.% Tr.	Dom % Tr.	D F D Index	C.I.	Station No.
Acer rubrum													1000
A. sacchar.	13	17	$\frac{7}{251}$ $\frac{10}{1546}$	1797	6	15	75	41.6	42.5	35.0	118	1180	Total Length of Transect. 381.5
Carya cord.	1	1	$\frac{1}{24}$	24	2	10	3.1	2.5	5	6	51		Total Area of Transect. 1259.0
C. ovata													Ave. Dist. Btw'n Trees 19.1
Fagus gran.													819.1
Fraxinus am													191
F. penn.													1719
Juglans cin	2	2	$\frac{1}{40}$ $\frac{1}{485}$	525			6.2	5.0	10.2	21	105		Ave. BA (Total BA = 80) 128.1 sq. in.
J. nigra													No. Trees/acre
Ostrya vir.	4	5	$\frac{5}{142}$	142			12.5	12.5	2.8	28	224		Dom./acre
Populus gr.													
P. tremuloi													
Prunus sero													
Quercus al.													
Q. macrocar													
Q. rubra	3	4	$\frac{3}{727}$ $\frac{1}{321}$	1048			9.4	10.0	20.4	40	240		
Q. velutina													
Tilia amer.	5	6	$\frac{3}{167}$ $\frac{2}{385}$ $\frac{1}{780}$	1332	1	3	15	15.7	15.0	26.0	57	427	
Ulmus amer.													
U. fulva	4	5	$\frac{4}{146}$ $\frac{1}{118}$	264	3	15	12.5	12.5	5.1	30	210		
					1	5							
Totals	80	21	$\frac{16}{770}$ $\frac{3}{2776}$ $\frac{3}{1586}$	5132	7		160	✓	✓	✓	✓	2487	

HARDWOOD SURVEY

TYPE:

RB, J.T., R.A.C.
20 in quad
1949-

[illegible]

[illegible]

[illegible]

STATION NO.	1	2	3	4	5	6	7	8	9	10	11	12	13	14	15	16	17	18	19	20	No	F%
SHRUBS & HERBS (cont'd)																						
Lithospermum latifolium																						
Lobelia cardin.																						
L. spicata																						
Lonicera canadense																						
L. dioica																						
L. hirsuta																						
L. prolifera																						
Luzula acuminata																						
L. multiflora																						
Lycopodium lucidulum																						
L. obscurum																						
Lysimachia quadrifolia																						
Maianthemum can.																						
Menispermum can.																						
Milium effusum																						
Mitchella repens																						
Mitella diphylla																						
Monarda fistul.																						
Monotropa uniflora																						
Morus rubra																						
Muhlenbergia frondosa																						
Oenothera biennis																						
Onoclea sensib.																						
Orchis spectab.	✓			✓																	1	5
Oryzopsis asper.																						
O. racemosa																						
Osmorhiza clayt.	✓									✓		✓									1	5
O. longistylis	✓									✓					✓		✓	✓			4	20
Osmunda cinnam.																						
O. claytoniana																						
Oxalis violacea																						
Panax quinquef.																						
P. trifolium																						
Panicum latifol.																						
Parietaria penn.	✓				✓																1	5
Paronychia cana.																						
Parthenocissus vitacea	✓	✓	✓	✓	✓	✓	✓											✓			7	35
Pedicularis can.																						
Phlox divaricata																						
Phryma leptost.																						
Physocarpus opul.																						
Phytolacca dec.																						
Pilea pumila																						
Poa palustris																						
Podophyllum pel.	✓			✓						✓		✓	✓		✓	✓	✓	✓	✓	✓	5	25
Polemonium rep.	✓				✓					✓		✓		✓	✓	✓	✓	✓	✓	✓	6	30
Polygonatum com.	✓	✓	✓																		2	10
P. pubescens																						
Polygonum virg.																						
Polymnia canad.																						
Polypodium virgin.																						

[illegible]

1949 Study 1000

Tree	: BA	: S	Tree	: BA	: S	Tree	: BA	: S
Acer negundo			Fagus grandif.			Prunus virgin.		
A. rubrum			Fraxinus amer.			Quercus alba		
A. saccharinum			F. nigra			Q. bicolor		
A. saccharum			F. pennsylvan.			Q. ellipsoid.		
Amelanchier sp.			Juglans cinere			Q. macrocarpa		
Betula lutea			J. nigra			Q. rubra		
B. nigra			Ostrya virgin.	32		Q. velutina		
B. papyrifera			Populus deltoi			Robinia pseudo		
Carpinus carol			P. grandident.			Sorbus americ.		
Carya cordifor			P. tremuloides			Tilia american	18	
C. ovata			Prunus americ.			Ulmus american		
Celtis occiden			P. pennsylvan.			U. fulva	32	
Crataegus sp.			P. serotina					

Distance:

14.5

Actaea sp.
 Adiantum pedat.
 Agrimonia gryp.
 Allium tricocc.
 Amphicarpa brac.
 Anemone quinque.
 A. virginiana
 Anemonella thal.
 Antennaria sp.
 Aplectrum hiem.
 Apocynum andros.
 Aquilegia canad.
 Aralia nudicaul.
 A. racemosa
 Arenaria later.
 Arisaema atrop.
 Asarum canad.
 Aster macrophyll.
 A. sagittifolius
 A. shortii
 Athyrium angust.
 Aureolaria grandif.
 Botrychium vir.
 Brachyelytrum
 Campanula amer.
 Carex albursina
 C. pennsylvan.
 Caulophyllum thal.
 Celastrus scan.
 Circaea latif.
 Claytonia virg.
 Cornus altern.
 C. femina
 C. rugosa
 Corylus americana
 Cryptotaenia canad.
 Cypripedium pubesc.
 Cystopteris frag.
 Dentaria laciniata
 Desmodium acumin.
 D. nudiflorum
 Dicentra cucullaria
 Dodecatheon meadia
 Dryopteris spinulosa
 Erigeron pulchellus
 Erythronium albidum

Shrubs & Herbs

Eupatorium purpur.
 Eupatorium rugosum
 Festuca obtusa
 Fragaria virgin.
 Galium aparine
 G. circaezans
 G. concinnum
 G. lanceolatum
 G. triflorum
 Geranium macul.
 Geum canadense
 Goodyera pubesc.
 Habenaria bract.
 Hamamelis virg.
 Helianthus strum.
 Hepatica acutil.
 Heuchera richard.
 Hydrastis canad.
 Hydrophyllum virg.
 Hystrix patula
 Impatiens biflora
 I. pallida
 Isopyrum bitern.
 Lactuca spicata
 Laportea canad.
 Lapoula virgin.
 Lathyrus ochrol.
 Lonicera prolif.
 Lysimachia quadr.
 Maianthemum can.
 Menispermum can.
 Mitella diphylla
 Monarda fistulosa
 Orchis spectab.
 Oryzopsis racem.
 Osmorhiza clayton.
 O. longistylis
 Osmunda clayton.
 Panax quinquef.
 Panicum latifolium
 Parietaria pennsylv.
 Parthenocissus vit.
 Phlox divaricata
 Phryma leptostachya
 Podophyllum pelt.
 Polemonium reptans

Polygonatum commut.
 Polygonatum pubesc.
 Polygonum virgin.
 Potentilla simpl.
 Prenanthes alba
 Pteridium aquil.
 Pyrola elliptica
 Ranunculus abort.
 R. recurvatus
 R. septentrion.
 Rhus radicans
 Ribes americanum
 R. cynosbati
 R. missouriense
 Rosa sp.
 Rubus alleghen.
 R. occidentalis
 R. strigosus
 Sambucus canad.
 Sanguinaria can.
 Sanicula gregaria
 S. marilandica
 Smilacina racemosa
 S. stellata
 Smilax ecirrhata
 S. herbacea
 S. hispida
 Solidago altissima
 S. latifolia
 S. ulmifolia
 Thalictrum dioicum
 Trillium cernuum
 T. flexipes
 T. grandiflorum
 T. recurvatum
 Triosteum perfoliatum
 Uvularia grandiflora
 Veronicastrum virg.
 Viburnum acerifolium
 V. affine
 Viola cucullata
 V. pubescens
 Vitis aestivalis
 V. riparia
 Zanthoxylum americ.
 Zizia aurea

Carex
 annua

Tree : BA : S : Tree : BA : S : Tree : DA : S

Acer negundo
A. rubrum
A. saccharinum
A. ~~saccharum~~
Amelanchier sp.
Betula lutea
B. nigra
B. papyrifera
Carpinus carol
Carya cordifor
C. ovata
Celtis occiden
Crataegus sp.

Fagus grandif.
Fraxinus amer.
F. nigra
F. pennsylvan.
Juglans cinere
J. nigra
Ostrya virgin. { 12
Populus delto { 28
P. grandident.
P. tremuloides
Prunus americ.
P. pennsylvan.
P. serotina

Prunus virgin.
Quercus alba
Q. bicolor
Q. ellipsoid.
Q. macrocarpa
Q. rubra
Q. velutina
Robinia pseudo
Sorbus americ.
Tilia american
Ulmus american
U. fulva

Distance: 26.5

Actaea sp.
 Adiantum pedat.
 Agrimonia gryp.
 Allium tricocc.
 Amphicarpa brac.
 Anemone quinque.
 A. virginiana
 Anemonella thal.
 Antennaria sp.
 Aplectrum hiem.
 Apocynum andros.
 Aquilegia canad.
 Aralia nudicaul.
 A. racemosa
 Arenaria later.
 Arisaema atrov.
 Asarum canad.
 Aster macrophyll.
 A. sagittifolius
 A. shortii
 Athyrium angust.
 Aureolaria grandif.
 Botrychium vir.
 Brachyelytrum
 Campanula amer.
 Carex albursina
 C. pennsylvan.
 Caulophyllum thal.
 Celastrus scan.
 Circaea latif.
 Claytonia virg.
 Cornus altern.
 C. femina
 C. rugosa
 Corylus americana
 Cryptotaenia canad.
 Cyripedium pubesc.
 Cystopteris frag.
 Dentaria laciniata
 Desmodium acumin.
 D. nudiflorum
 Dicentra cucullaria
 Dodecatheon meadia
 Dryopteris spinulosa
 Erigeron pulchellus
 Erythronium albidum

Shrubs & Herbs

Eupatorium purpur.
 Eupatorium rugosum
 Festuca obtusa
 Fragaria virgin.
 Galium aparine
 G. circaeazans
 G. concinnum
 G. lanceolatum
 G. triflorum
 Geranium macul.
 Geum canadense
 Goodyera pubesc.
 Habenaria bract.
 Hamamelis virg.
 Helianthus strum.
 Hepatica acutil.
 Heuchera richard.
 Hydrastis canad.
 Hydrophyllum virg.
 Hystrix patula
 Impatiens biflora
 I. pallida
 Isopyrum bitern.
 Lactuca spicata
 Laportea canad.
 Lapoula virgin.
 Lathyrus ochrol.
 Lonicera proclif.
 Lysimachia quadr.
 Maianthemum can.
 Menispermum can.
 Mitella diphylla
 Monarda fistulosa
 Orchis spectab.
 Oryzopsis racem.
 Osmorhiza clayton.
 O. longistylis
 Osmunda clayton.
 Panax quinquef.
 Panicum latifolium
 Parietaria pennsylv.
 Parthenocissus vit.
 Phlox divaricata
 Phryma leptostachya
 Podophyllum pelt.
 Polemonium reptans

Polygonatum commut.
Polygonatum pubesc.
Polygonum virgin.
Potentilla simpl.
Prenanthes alba
Pteridium aquil.
Pyrola elliptica
Ranunculus abort.
R. recurvatus
R. septentrion.
Rhus radicans
Ribes americanum
R. cynosbati
R. missouriense
Rosa sp.
Rubus alleghen.
R. occidentalis
R. strigosus
Sambucus canad.
Sanguinaria can.
Sanicula gregaria
S. marilandica
Smilacina racemosa
S. stellata
Smilax ecirrhata
S. herbacea
S. hispida
Solidago altissima
S. latifolia
S. ulmifolia
Thalictrum dioicum
Trillium cernuum
T. flexipes
T. grandiflorum
T. recurvatum
Triosteum perfoliatum
Uvularia grandiflora
Veronicastrum virg.
Viburnum acerifolium
V. affine
Viola cucullata
V. pubescens
Vitis aestivalis
V. riparia
Zanthoxylum americ.
Zizia aurea

 Tree : BA : S : Tree : BA : S : Tree : BA : S

Acer negundo
 A. rubrum
 A. saccharinum
 A. saccharum
 Amelanchier sp.
 Betula lutea
 B. nigra
 B. papyrifera
 Carpinus carol
 Carya cordifor
 C. ovata
 Celtis occiden
 Crataegus sp.

138
 60

Fagus grandif.
 Fraxinus amer.
 F. nigra
 F. pennsylvan.
 Juglans cinere
 J. nigra
 Ostrya virgin.
 Populus deltoi
 P. grandident.
 P. tremuloides
 Prunus americ.
 P. pennsylvan.
 P. serotina

Prunus virgin.
 Quercus alba
 Q. bicolor
 Q. ellipsoid.
 Q. macrocarpa
 Q. rubra
 Q. velutina
 Robinia pseudo
 Sorbus americ.
 Tilia american
 Ulmus american
 U. fulva

Distance: 5.5

Actaea sp.
 Adiantum pedat.
 Agrimonia gryp.
 Allium tricocc.
 Amphicarpa brac.
 Anemone quinque.
 A. virginiana
 Anemonella thal.
 Antennaria sp.
 Aplectrum hiem.
 Apocynum andros.
 Aquilegia canad.
 Aralia nudicaul.
 A. racemosa
 Arenaria later.
 Arisaema atror.
 Asarum canad.
 Aster macrophyll.
 A. sagittifolius
 A. shortii
 Athyrium angust.
 Aureolaria grandif.
 Botrychium vir.
 Brachyelytrum
 Campanula amer.
 Carex albursina
 C. pennsylvan.
 Caulophyllum thal.
 Celastrus scan.
 Circaea latif.
 Claytonia virg.
 Cornus altern.
 C. femina
 C. rugosa
 Corylus americana
 Cryptotaenia canad.
 Cypripedium pubesc.
 Cystopteris frag.
 Dentaria laciniata
 Desmodium acumin.
 D. nudiflorum
 Dicentra cucullaria
 Dodecatheon meadia
 Dryopteris spinulosa
 Erigeron pulchellus
 Erythronium albidum

Shrubs & Herbs

Eupatorium purpur.
 Eupatorium rugosum
 Festuca obtusa
 Fragaria virgin.
 Galium aparine
 G. circaezans
 G. concinnum
 G. lanceolatum
 G. triflorum
 Geranium macul.
 Geum canadense
 Goodyera pubesc.
 Habenaria bract.
 Hamamelis virg.
 Helianthus strum.
 Hepatica acutil.
 Heuchera richard.
 Hydrastis canad.
 Hydrophyllum virg.
 Hystrix patula
 Impatiens biflora
 I. pallida
 Isopyrum bitern.
 Lactuca spicata
 Laportea canad.
 Lapoula virgin.
 Lathyrus ochrol.
 Lonicera prolif.
 Lysimachia quadr.
 Maianthemum can.
 Menispermum can.
 Mitella diphylla
 Monarda fistulosa
 Orchis spectab.
 Oryzopsis racem.
 Osmorhiza clayton.
 O. longistylis
 Osmunda clayton.
 Panax quinquef.
 Panicum latifolium
 Parietaria pennsylv.
 Parthenocissus vit.
 Phlox divaricata
 Phryma leptostachya
 Podophyllum pelt.
 Polemonium reptans

Polygonatum commut.
 Polygonatum pubesc.
 Polygonum virgin.
 Potentilla simpl.
 Prenanthes alba
 Pteridium aquil.
 Pyrola elliptica
 Ranunculus abort.
 R. recurvatus
 R. septentrion.
 Rhus radicans
 Ribes americanum
 R. cynosbati
 R. missouriense
 Rosa sp.
 Rubus alleghen.
 R. occidentalis
 R. strigosus
 Sambucus canad.
 Sanguinaria can.
 Sanicula gregaria
 S. marilandica
 Smilacina racemosa
 S. stellata
 Smilax ecirrhata
 S. herbacea
 S. hispida
 Solidago altissima
 S. latifolia
 S. ulmifolia
 Thalictrum dioicum
 Trillium cernuum
 T. flexipes
 T. grandiflorum
 T. recurvatum
 Triosteum perfoliatum
 Uvularia grandiflora
 Veronicastrium virg.
 Viburnum acerifolium
 V. affine
 Viola cucullata
 V. pubescens
 Vitis aestivalis
 V. riparia
 Zanthoxylum americ.
 Zizia aurea

Tree	: BA	: S	Tree	: BA	: S	Tree	: BA	: S
Acer negundo			Fagus grandif.			Prunus virgin.		
A. rubrum			Fraxinus amer.			Quercus alba		
A. saccharinum			F. nigra			Q. bicolor		
A. saccharum	58	175	F. pennsylvan.			Q. ellipsoid.		
Amelanchier sp.			Juglans cinere			Q. macrocarpa		
Betula lutea			J. nigra			Q. rubra		
B. nigra			Ostrya virgin.			Q. velutina		
B. papyrifera			Populus deltoi			Robinia pseudo		
Carpinus carol			P. grandident.			Sorbus americ.		
Carya cordifor			P. tremuloides			Tilia american		
C. ovata			Prunus americ.			Ulmus american		
Celtis occiden			P. pennsylvan.			U. fulva		
Crataegus sp.			P. serotina					
						Distance:	14.5	
Actaea sp.			Shrubs & Herbs			Polygonatum commut.		
Adiantum pedat.			Eupatorium purpur.			Polygonatum pubesc.		
Agrimonia gryp.			Eupatorium rugosum			Polygonum virgin.		
Allium tricocc.			Festuca obtusa			Potentilla simpl.		
Amphicarpa brac.			Fragaria virgin.			Prenanthes alba		
Anemone quinque.			Galium aparine			Pteridium aquil.		
A. virginiana			G. circaezans			Pyrola elliptica		
Anemonella thal.			G. concinnum			Ranunculus abort.		
Antennaria sp.			G. lanceolatum			R. recurvatus		
Aplectrum hiem.			G. triflorum			R. septentrion.		
Apocynum andros.			Geranium macul.			Rhus radicans		
Aquilegia canad.			Geum canadense			Ribes americanum		
Aralia nudicaul.			Goodyera pubesc.			R. cynosbati		
A. racemosa			Habenaria bract.			R. missouriense		
Arenaria later.			Hamamelis virg.			Rosa sp.		
Arisaema atror.			Helianthus strum.			Rubus alleghen.		
Asarum canad.			Hepatica acutil.			R. occidentalis		
Aster macrophyll.			Heuchera richard.			R. strigosus		
A. sagittifolius			Hydrastis canad.			Sambucus canad.		
A. shortii			Hydrophyllum virg.			Sanguinaria can.		
Athyrium angust.			Hystrix patula			Sanicula gregaria		
Aureolaria grandif.			Impatiens biflora			S. marilandica		
Botrychium vir.			I. pallida			Smilacina racemosa		
Brachyelytrum			Isopyrum bitern.			S. stellata		
Campanula amer.			Lactuca spicata			Smilax ecirrhata		
Carex albursina			Lamortea canad.			S. herbacea		
C. pennsylvan.			Lapnula virgin.			S. hispida		
Caulophyllum thal.			Lathyrus ochrol.			Solidago altissima		
Celastrus scan.			Lonicera proclif.			S. latifolia		
Circaea latif.			Lysimachia quadr.			S. ulmifolia		
Claytonia virg.			Maianthemum can.			Thalictrum dioicum		
Cornus altern.			Menispermum can.			Trillium cernuum		
C. femina			Mitella diphylla			T. flexipes		
C. rugosa			Monarda fistulosa			T. grandiflorum		
Corylus americana			Orchis spectab.			T. recurvatum		
Cryptotaenia canad.			Oryzopsis racem.			Triosteum perfoliatum		
Cypripedium pubesc.			Osmorhiza clayton.			Uvularia grandiflora		
Cystopteris frag.			C. longistylis			Veronicastrum virg.		
Dentaria laciniata			Osmunda clayton.			Viburnum acerifolium		
Desmodium acumin.			Panax quinquef.			V. affine		
D. nudiflorum			Panicum latifolium			Viola cucullata		
Dicentra cucullaria			Parietaria pennsylv.			V. pubescens		
Dodecatheon meadia			Parthenocissus vit.			Vitis aestivalis		
Dryopteris spinulosa			Phlox divaricata			V. riparia		
Erigeron pulchellus			Phryma leptostachya			Zanthoxylum americ.		
Erythronium albidum			Podophyllum pelt.			Zizia aurea		
			Peletonium reptans					

Tree	BA	S	Tree	BA	S	Tree	BA	S
Acer negundo			Fagus grandif.			Prunus virgin.		
A. rubrum			Fraxinus amer.			Quercus alba		
A. saccharinum			F. nigra			Q. bicolor		
A. saccharum 50			F. pennsylvan.			Q. ellipsoid.		
Amelanchier sp.			Juglans cinere			Q. macrocarpa		
Betula lutea			J. nigra			Q. rubra		
B. nigra			Ostrya virgin.			Q. velutina		
B. papyrifera			Populus deltoi			Robinia pseudo		
Carpinus carol			P. grandident.			Sorbus americ.		
Carya cordifor			P. tremuloides			Tilia american		
C. ovata			Prunus americ.			Ulmus american		
Celtis occiden			P. pennsylvan.			U. fulva 54		
Crataegus sp.			P. serotina					

Distance: 16

Actaea sp.
 Adiantum pedat.
 Agrimonia gryp.
 Allium tricocc.
 Amphicarpa brac.
 Anemone quinque.
 A. virginiana
 Anemonella thal.
 Antennaria sp.
 Aplectrum hiem.
 Apocynum andros.
 Aquilegia canad.
 Aralia nudicaul.
 A. racemosa
 Arenaria later.
 Arisaema atror.
 Asarum canad.
 Aster macrophyll.
 A. sagittifolius
 A. shortii
 Athyrium angust.
 Aureolaria grandif.
 Botrychium vir.
 Brachyelytrum
 Campanula amer.
 Carex albursina
 C. pennsylvan.
 Caulophyllum thal.
 Celastrus scan.
 Circaea latif.
 Claytonia virg.
 Cornus altern.
 C. femina
 C. rugosa
 Corylus americana
 Cryptotaenia canad.
 Cyripedium pubesc.
 Cystopteris frag.
 Dentaria laciniata
 Desmodium acumin.
 D. nudiflorum
 Dicentra cucullaria
 Dodecatheon meadia
 Dryopteris spinulosa
 Erigeron pulchellus
 Erythronium albidum

Shrubs & Herbs

Eupatorium purpur.
 Eupatorium rugosum
 Festuca obtusa
 Fragaria virgin.
 Galium aparine
 G. circaeazans
 G. concinnum
 G. lanceolatum
 G. triflorum
 Geranium macul.
 Geum canadense
 Goodyera pubesc.
 Habenaria bract.
 Hamamelis virg.
 Helianthus strum.
 Hepatica acutil.
 Heuchera richard.
 Hydrastis canad.
 Hydrophyllum virg.
 Hystrix patula
 Impatiens biflora
 I. pallida
 Isopyrum bitern.
 Lactuca spicata
 Laportea canad.
 Lapula virgin.
 Lathyrus ochrol.
 Lonicera prolif.
 Lysimachia quadr.
 Maianthemum can.
 Menispermum can.
 Mitella diphylla
 Monarda fistulosa
 Orchis spectab.
 Oryzopsis racem.
 Osmorhiza clayton.
 O. longistylis
 Osmunda clayton.
 Panax quinquef.
 Panicum latifolium
 Parietaria pennsylv.
 Parthenocissus vit.
 Phlox divaricata
 Phryma leptostachya
 Podophyllum pelt.
 Polemonium reptans

Polygonatum commut.
 Polygonatum pubesc.
 Polygonum virgin.
 Potentilla simpl.
 Prenanthes alba
 Pteridium aquil.
 Pyrola elliptica
 Ranunculus abort.
 R. recurvatus
 R. septentrion.
 Rhus radicans
 Ribes americanum
 R. cynosbati
 R. missouriense
 Rosa sp.
 Rubus alleghen.
 R. occidentalis
 R. strigosus
 Sambucus canad.
 Sanguinaria can.
 Sanicula gregaria
 S. marilandica
 Smilacina racemosa
 S. stellata
 Smilax ecirrhata
 S. herbacea
 S. hispida
 Solidago altissima
 S. latifolia
 S. ulmifolia
 Thalictrum dioicum
 Trillium cernuum
 T. flexipes
 T. grandiflorum
 T. recurvatum
 Triosteum perfoliatum
 Uvularia grandiflora
 Veronicastrium virg.
 Viburnum acerifolium
 V. affine
 Viola cucullata
 V. pubescens
 Vitis aestivalis
 V. riparia
 Zanthoxylum americ.
 Zizia aurea

Carex sp. NL

Tree	BA	S	Tree	BA	S	Tree	BA	S
Acer negundo			Fagus grandif.			Prunus virgin.		
A. rubrum			Fraxinus amer.			Quercus alba		
A. saccharinum			F. nigra			Q. bicolor		
A. saccharum	240		F. pennsylvan.			Q. ellipsoid.		
Amelanchier sp.			Juglans cinere			Q. macrocarpa		
Betula lutea			J. nigra			Q. rubra		
B. nigra			Ostrya virgin.			Q. velutina		
B. papyrifera			Populus deltoi			Robinia pseudo		
Carpinus carol			P. grandident.			Sorbus americ.		
Carya cordifor			P. tremuloides			Tilia american		
C. ovata			Prunus americ.			Ulmus american		
Celtis occiden			P. pennsylvan.			U. fulva	40	
Crataegus sp.			P. serotina					

Distance: 17

			<u>Shrubs & Herbs</u>					
Actaea sp.			Eupatorium purpur.			Polygonatum commut.		
Adiantum pedat.			Eupatorium rugosum			Polygonatum pubesc.		
Agrimonia gryp.			Festuca obtusa			Polygonum virgin.		
Allium tricocc.			Fragaria virgin.			Potentilla simpl.		
Amphicarpa brac.			Galium aparine			Prenanthes alba		
Anemone quinque.			G. circaeazans			Pteridium aquil.		
A. virginiana			G. concinnum			Pyrola elliptica		
Anemonella thal.			G. lanceolatum			Ranunculus abort.		
Antennaria sp.			G. triflorum			R. recurvatus		
Aplectrum hiem.			Geranium macul.			R. septentrion.		
Apocynum andros.			Geum canadense			Rhus radicans		
Aquilegia canad.			Goodyera pubesc.			Ribes americanum		
Aralia nudicaul.			Habenaria bract.			R. cynosbati		
A. racemosa			Hamamelis virg.			R. missouriense		
Arenaria later.			Helianthus strum.			Rosa sp.		
Arisaema atrop.			Hepatica acutil.			Rubus alleghen.		
Asarum canad.			Heuchera richard.			R. occidentalis		
Aster macrophyll.			Hydrastis canad.			R. strigosus		
A. sagittifolius			Hydrophyllum virg.			Sambucus canad.		
A. shortii			Hystrix patula			Sanguinaria can.		
Athyrium angust.			Impatiens biflora			Sanicula gregaria		
Aureolaria grandif.			I. pallida			S. marilandica		
Botrychium vir.			Isopyrum bitern.			Smilacina racemosa		
Brachyelytrum			Lactuca spicata			S. stellata		
Campanula amer.			Laportea canad.			Smilax ecirrhata		
Carex albursina			Lappula virgin.			S. herbacea		
C. pennsylvan.			Lathyrus ochrol.			S. hispida		
Caulophyllum thal.			Lonicera proclif.			Solidago altissima		
Celastrus scan.			Lysimachia quadr.			S. latifolia		
Circaea latif.			Maianthemum can.			S. ulmifolia		
Claytonia virg.			Menispermum can.			Thalictrum dioicum		
Cornus altern.			Mitella diphylla			Trillium cernuum		
C. femina			Monarda fistulosa			T. flexipes		
C. rugosa			Orchis spectab.			T. grandiflorum		
Corylus americana			Oryzopsis racem.			T. recurvatum		
Cryptotaenia canad.			Osmorhiza clayton.			Triosteum perfoliatum		
Cypripedium pubesc.			O. longistylis			Uvularia grandiflora		
Cystopteris frag.			Osmunda clayton.			Veronicastrum virg.		
Dentaria laciniata			Panax quinquef.			Viburnum acerifolium		
Desmodium acumin.			Panicum latifolium			V. affine		
D. nudiflorum			Parietaria pennsylv.			Viola cucullata		
Dicentra cucullaria			Parthenocissus vit.			V. pubescens		
Dodecatheon meadia			Phlox divaricata			Vitis aestivalis		
Dryopteris spinulosa			Phryma leptostachya			V. riparia		
Erigeron pulchellus			Podophyllum pelt.			Zanthoxylum americ.		
Erythronium albidum			Polemonium reptans			Zizia aurea		

Tree	BA	S	Tree	BA	S	Tree	BA	S
Acer negundo			Fagus grandif.			Prunus virgin.		
A. rubrum			Fraxinus amer.			Quercus alba		
A. saccharinum			F. nigra			Q. bicolor		
A. saccharum			F. pennsylvan.			Q. ellipsoid.		
Amelanchier sp.			Juglans cinere			Q. macrocarpa		
Betula lutea			J. nigra			Q. rubra		
B. nigra			Ostrya virgin.			Q. velutina		
B. papyrifera			Populus deltoii			Robinia pseudo		
Carpinus carol			P. grandident.			Sorbus americ.		
Carya cordifor			P. tremuloides			Tilia american	85	
C. ovata			Prunus americ.			Ulmus american		
Celtis occiden			P. pennsylvan.			U. fulva	20	
Crataegus sp.			P. serotina					

Distance:

14.5

Actaea sp. *alba*
 Adiantum pedat.
 Agrimonia gryp.
 Allium tricocc.
 Amphicarpa brac.
 Anemone quinque.
 A. virginiana
 Anemonella thal.
 Antennaria sp.
 Aplectrum hiem.
 Apocynum andros.
 Aquilegia canad.
 Aralia nudicaul.
 A. racemosa
 Arenaria later.
 Arisaema atror.
 Asarum canad.
 Aster macrophyll.
 A. sagittifolius
 A. shortii
 Athyrium angust.
 Aureolaria grandif.
 Botrychium vir.
 Brachyelytrum
 Campanula amer.
 Carex albursina
 C. pennsylvan.
 Caulophyllum thal.
 Celastrus scan.
 Circaea latif.
 Claytonia virg.
 Cornus altern.
 C. femina
 C. rugosa
 Corylus americana
 Cryototaenia canad.
 Cypripedium pubesc.
 Cystopteris frag.
 Dentaria laciniata
 Desmodium acumin.
 D. nudiflorum
 Dicentra cucullaria
 Dodecatheon meadia
 Dryopteris spinulosa
 Erigeron pulchellus
 Erythronium albidum

Shrubs & Herbs

Eupatorium purpur.
 Eupatorium rugosum
 Festuca obtusa
 Fragaria virgin.
 Galium aparine
 G. circaeazans
 G. concinnum
 G. lanceolatum
 G. triflorum
 Geranium macul.
 Geum canadense
 Goodyera pubesc.
 Habenaria bract.
 Hamamelis virg.
 Helianthus strum.
 Hepatica acutil.
 Heuchera richard.
 Hydrastis canad.
 Hydrophyllum virg.
 Hystrix patula
 Impatiens biflora
 I. pallida
 Isopyrum bitern.
 Lactuca spicata
 Laportea canad.
 Lapula virgin.
 Lathyrus ochrol.
 Lonicera proclif.
 Lysimachia quadr.
 Maianthemum can.
 Menispermum can.
 Mitella diphylla
 Monarda fistulosa
 Orchis spectab.
 Oryzopsis racem.
 Osmorhiza clayton.
 O. longistylis
 Osmunda clayton.
 Panax quinquef.
 Panicum latifolium
 Parietaria pennsylv.
 Parthenocissus vit.
 Phlox divaricata
 Phryma leptostachya
 Podophyllum pelt.
 Polemonium reptans

Polygonatum commut.
 Polygonatum pubesc.
 Polygonum virgin.
 Potentilla simpl.
 Prenanthes alba
 Pteridium aquil.
 Pyrola elliptica
 Ranunculus abort.
 R. recurvatus
 R. septentrion.
 Rhus radicans
 Ribes americanum
 R. cynosbati
 R. missouriense
 Rosa sp.
 Rubus alleghen.
 R. occidentalis
 R. strigosus
 Sambucus canad.
 Sanguinaria can.
 Sanicula gregaria
 S. marilandica
 Smilacina racemosa
 S. stellata
 Smilax ecirrhata
 S. herbacea
 S. hispida
 Solidago altissima
 S. latifolia
 S. ulmifolia
 Thalictrum dioicum
 Trillium cernuum
 T. flexipes
 T. grandiflorum
 T. recurvatum
 Triosteum perfoliatum
 Uvularia grandiflora
 Veronicastrium virg.
 Viburnum acerifolium
 V. affine
 Viola cucullata
 V. pubescens
 Vitis aestivalis
 V. riparia
 Zanthoxylum americ.
 Zizia aurea

Carex sp.
 1

Tree	BA	S	Tree	BA	S	Tree	BA	S
Acer negundo			Fagus grandif.			Prunus virgin.		
A. rubrum			Fraxinus amer.			Quercus alba		
A. saccharinum			F. nigra			Q. bicolor		
A. saccharum			F. pennsylvan.			Q. ellipsoid.		
Amelanchier sp.			Juglans cinere			Q. macrocarpa		
Betula lutea			J. nigra			Q. rubra		
B. nigra			Ostrya virgin.			Q. velutina		
B. papyrifera			Populus deltoi			Robinia pseudo		
Carpinus carol			P. grandident.			Sorbus americ.		
Carya cordifor	24		P. tremuloides			Tilia american	80	
C. ovata			Prunus americ.			Ulmus american		
Celtis occiden			P. pennsylvan.			U. fulva		
Crataegus sp.			P. serotina					

Distance: 12

Actaea sp.
 Adiantum pedat.
 Agrimonia gryp.
 Allium tricocc.
 Amphicarpa brac.
 Anemone quinque.
 A. virginiana
 Anemonella thal.
 Antennaria sp.
 Aplectrum hiem.
 Apocynum andros.
 Aquilegia canad.
 Aralia nudicaul.
 A. racemosa
 Arenaria later.
 Arisaema atrop.
 Asarum canad.
 Aster macrophyll.
 A. sagittifolius
 A. shortii
 Athyrium angust.
 Aureolaria grandif.
 Botrychium vir.
 Brachyelytrum
 Campanula amer.
 Carex albursina
 C. pennsylvan.
 Caulophyllum thal.
 Celastrus scan.
 Circaea latif.
 Claytonia virg.
 Cornus altern.
 C. femina
 C. rugosa
 Corylus americana
 Cryptotaenia canad.
 Cypripedium pubesc.
 Cystopteris frag.
 Dentaria laciniata
 Desmodium acumin.
 D. nudiflorum
 Dicentra cucullaria
 Dodecatheon meadia
 Dryopteris spinulosa
 Erigeron pulchellus
 Erythronium albidum

Shrubs & Herbs

Eupatorium purpur.
 Eupatorium rugosum
 Festuca obtusa
 Fragaria virgin.
 Galium aparine
 G. circaeans
 G. concinnum
 G. lanceolatum
 G. triflorum
 Geranium macul.
 Geum canadense
 Goodyera pubesc.
 Habenaria bract.
 Hamamelis virg.
 Helianthus strum.
 Hepatica acutil.
 Heuchera richard.
 Hydrastis canad.
 Hydrophyllum virg.
 Hystrix patula
 Impatiens biflora
 I. pallida
 Isopyrum bitern.
 Lactuca spicata
 Laportea canad.
 Lapoula virgin.
 Lathyrus ochrol.
 Lonicera proclif.
 Lysimachia quadr.
 Maianthemum can.
 Menispermum can.
 Mitella diphylla
 Monarda fistulosa
 Orchis spectab.
 Oryzopsis racem.
 Osmorhiza clayton.
 O. longistylis
 Osmunda clayton.
 Panax quinquef.
 Panicum latifolium
 Parietaria pennsylv.
 Parthenocissus vit.
 Phlox divaricata
 Phryma leptostachya
 Podophyllum pelt.
 Polemonium reptans

Polygonatum commut.
 Polygonatum pubesc.
 Polygonum virgin.
 Potentilla simpl.
 Prenanthes alba
 Pteridium aquil.
 Pyrola elliptica
 Ranunculus abort.
 R. recurvatus
 R. septentrion.
 Rhus radicans
 Ribes americanum
 R. cynosbati
 R. missouriense
 Rosa sp.
 Rubus alleghen.
 R. occidentalis
 R. strigosus
 Sambucus canad.
 Sanguinaria can.
 Sanicula gregaria
 S. marilandica
 Smilacina racemosa
 S. stellata
 Smilax ecirrhata
 S. herbacea
 S. hispida
 Solidago altissima
 S. latifolia
 S. ulmifolia
 Thalictrum dioicum
 Trillium cernuum
 T. flexipes
 T. grandiflorum
 T. recurvatum
 Triosteum perfoliatum
 Uvularia grandiflora
 Veronicastrum virg.
 Viburnum acerifolium
 V. affine
 Viola cucullata
 V. pubescens
 Vitis aestivalis
 V. riparia
 Zanthoxylum americ.
 Zizia aurea

Tree	BA	S	Tree	BA	S	Tree	BA	S
Acer negundo			Fagus grandif.			Prunus virgin.		
A. rubrum			Fraxinus amer.			Quercus alba		
A. saccharinum			F. nigra			Q. bicolor		
A. saccharum	101	1	F. pennsylvan.			Q. ellipsoid.		
Amelanchier sp.			Juglans cinere			Q. macrocarpa		
Betula lutea			J. nigra			Q. rubra		
B. nigra			Ostrya virgin.	48		Q. velutina		
B. papyrifera			Populus deltoii			Robinia pseudo		
Carpinus carol			P. grandident.			Sorbus americ.		
Carya cordifor			P. tremuloides			Tilia american		
C. ovata			Prunus americ.			Ulmus american		
Celtis occiden			P. pennsylvan.			U. fulva		
Crataegus sp.			P. serotina					

Distance: 235

			Shrubs & Herbs					
Actaea sp.			Eupatorium purpur.			Polygonatum commut.		
Adiantum pedat.			Eupatorium rugosum			Polygonatum pubesc.		
Agrimonia gryp.			Festuca obtusa			Polygonum virgin.		
Allium tricocc.			Fragaria virgin.			Potentilla simpl.		
Amphicarpa brac.			Galium aparine			Prenanthes alba		
Anemone quinque.			G. circaeazans			Pteridium aquil.		
A. virginiana			G. concinnum			Pyrola elliptica		
Anemonella thal.			G. lanceolatum			Ranunculus abort.		
Antennaria sp.			G. triflorum			R. recurvatus		
Aplectrum hiem.			Geranium macul.			R. septentrion.		
Apocynum andros.			Geum canadense			Rhus radicans		
Aquilegia canad.			Goodyera pubesc.			Ribes americanum		
Aralia nudicaul.			Habenaria bract.			R. cynosbati		
A. racemosa			Hamamelis virg.			R. missouriense		
Arenaria later.			Helianthus strum.			Rosa sp.		
Arisaema atrop.			Hepatica acutil.			Rubus alleghen.		
Asarum canad.			Heuchera richard.			R. occidentalis		
Aster macrophyll.			Hydrastis canad.			R. strigosus		
A. sagittifolius			Hydrophyllum virg.			Sambucus canad.		
A. shortii			Hystrix patula			Sanguinaria can.		
Athyrium angust.			Impatiens biflora			Sanicula gregaria		
Aureolaria grandif.			I. pallida			S. marilandica		
Botrychium vir.			Isopyrum bitern.			Smilacina racemosa		
Brachyelytrum			Lactuca spicata			S. stellata		
Campanula amer.			Laportea canad.			Smilax ecirrhata		
Carex albursina			Lappula virgin.			S. herbacea		
C. pennsylvan.			Lathyrus ochrol.			S. hispida		
Caulophyllum thal.			Lonicera prolif.			Solidago altissima		
Celastrus scan.			Lysimachia quadr.			S. latifolia		
Circaea latif.			Maianthemum can.			S. ulmifolia		
Claytonia virg.			Menispermum can.			Thalictrum dioicum		
Cornus altern.			Mitella diphylla			Trillium cernuum		
C. femina			Monarda fistulosa			T. flexipes		
C. rugosa			Orchis spectab.			T. grandiflorum		
Corylus americana			Oryzopsis racem.			T. recurvatum		
Cryptotaenia canad.			Osmorhiza clayton.			Triosteum perfoliatum		
Cypripedium pubesc.			O. longistylis			Uvularia grandiflora		
Cystopteris frag.			Osmunda clayton.			Veronicastrum virg.		
Dentaria laciniata			Panax quinquef.			Viburnum acerifolium		
Desmodium acumin.			Panicum latifolium			V. affine		
D. nudiflorum			Parietaria pennsylv.			Viola cucullata		
Dicentra cucullaria			Parthenocissus vit.			V. pubescens		
Dodecatheon meadia			Phlox divaricata			Vitis aestivalis		
Dryopteris spinulosa			Phryma leptostachya			V. riparia		
Erigeron pulchellus			Podophyllum pelt.			Zanthoxylum americ.		
Erythronium albidum			Peletonium reptans			Zizia aurea		

Tree	: BA	: S	Tree	: BA	: S	Tree	: BA	: S
Acer negundo			Pagus grandif.			Prunus virgin.		
A. rubrum			Fraxinus amer.			Quercus alba		
A. saccharinum	18	2	F. nigra			Q. bicolor		
A. saccharum			F. pennsylvan.			Q. ellipsoid.		
Amelanchier sp.			Juglans cinere			Q. macrocarpa		
Betula lutea			J. nigra			Q. rubra		
B. nigra			Ostrya virgin.			Q. velutina		
B. papyrifera			Populus deltoi			Robinia pseudo		
Carpinus carol			P. grandident.			Sorbus americ.		
Carya cordifor			P. tremuloides			Tilia american		780
C. ovata			Prunus americ.			Ulmus american		
Celtis occiden			P. pennsylvan.			U. fulva		
Crataegus sp.			P. serotina					
Distance: 24.5								
Actaea sp.			Shrubs & Herbs			Polygonatum commut.		
Adiantum pedat.			Eupatorium purpur.			Polygonatum pubesc.		
Agrimonia gryp.			Eupatorium rugosum			Polygonum virgin.		
Allium tricocc.			Festuca obtusa			Potentilla simpl.		
Amphicarpa brac.			Fragaria virgin.			Prenanthes alba		
Anemone quinque.			Galium aparine			Pteridium aquil.		
A. virginiana			G. circaeans			Pyrola elliptica		
Anemonella thal.			G. concinnum			Ranunculus abort.		
Antennaria sp.			G. lanceolatum			R. recurvatus		
Aplectrum hiem.			G. triflorum			R. septentrion.		
Apocynum andros.			Geranium macul.			Rhus radicans		
Aquilegia canad.			Geum canadense			Ribes americanum		
Aralia nudicaul.			Goodyera pubesc.			R. cynosbati		
A. racemosa			Habenaria bract.			R. missouriense		
Arenaria later.			Hamamelis virg.			Rosa sp.		
Arisaema atrop.			Helianthus strum.			Rubus alleghen.		
Asarum canad.			Hepatica acutil.			R. occidentalis		
Aster macrophyll.			Heuchera richard.			R. strigosus		
A. sagittifolius			Hydrastis canad.			Sambucus canad.		
A. shortii			Hydrophyllum virg.			Sanguinaria can.		
Athyrium angust.			Hystrix patula			Sanicula gregaria		
Aureolaria grandif.			Impatiens biflora			S. marilandica		
Botrychium vir.			I. pallida			Smilacina racemosa		
Brachyelytrum			Isopyrum bitern.			S. stellata		
Campanula amer.			Lactuca spicata			Smilax ecirrhata		
Carex albursina			Laportea canad.			S. herbacea		
C. pennsylvan.			Lappula virgin.			S. hispida		
Caulophyllum thal.			Lathyrus ochrol.			Solidago altissima		
Celastrus scan.			Lonicera proclif.			S. latifolia		
Circaea latif.			Lysimachia quadr.			S. ulmifolia		
Claytonia virg.			Maianthemum can.			Thalictrum dioicum		
Cornus altern.			Menispermum can.			Trillium cernuum		
C. femina			Mitella diphylla			T. flexipes		
C. rugosa			Monarda fistulosa			T. grandiflorum		
Corylus americana			Orchis spectab.			T. recurvatum		
Cryptotaenia canad.			Oryzopsis racem.			Triosteum perfoliatum		
Cypripedium pubesc.			Osmorhiza clayton.			Uvularia grandiflora		
Cystopteris frag.			O. longistylis			Veronicastrum virg.		
Dentaria laciniata			Osmunda clayton.			Viburnum acerifolium		
Desmodium acumin.			Panax quinquef.			V. affine		
D. nudiflorum			Panicum latifolium			Viola cucullata		
Dicentra cucullaria			Parietaria pennsyl.			V. pubescens		
Dodecatheon meadia			Parthenocissus vit.			Vitis aestivalis		
Dryopteris spinulosa			Phlox divaricata			V. riparia		
Erigeron pulchellus			Phryma leptostachya			Zanthoxylum americ.		
Erythronium albidum			Podophyllum pelt.			Zizia aurea		
			Polemonium reptans					

Agastache scrophul.	Erigeron philadel.	Pilea pumila
Allium canadense	Erythronium americ.	Polymnia canad.
Amorpha canesc.	Evonymus atropur.	Polypodium vulgare
Anaphalis marg.	Floerkea prosperp.	Prunella vulgaris
Anemone cylindrica	Fragaria vesca	Pteretis nodulosa
Arabis canadensis	Galium boreale	Pyrus coronaria
A. laevigata	Gaultheria procumb.	P. icensis
A. lyrata	Gaylussacia baccata	Ranunculus fascicul.
A. perstellata	Gentiana quinquef.	R. rhomboideus
Aralia hispida	Geum virginianum	Rhus glabra
Arisaema dracont.	Hedeoma hispida	R. typhina
Asclepias ovalif.	Hepatica americana	Rubus hispidus
A. phytolaccoides	Heracleum lanatum	R. pubescens
Aster azureus	Hieracium canad.	Rudbeckia laciniata
A. paniculatus	H. scabrum	Salix sp.
A. prenanthoides	Hydrophyllum append.	Sambucus pubens
Athyrium thelypter.	Hypoxis hirsuta	Saxifraga pennsylv.
Besseyia bullii	Ilex verticillata	Scrophularia lan.
Boehmeria cylindr.	Juncus tenuis	S. marilandica
Botrychium multif.	Juniperus communis	Senecio balsamitae
Bromus burgans	J. virginiana	Silene stellata
Camptosorus rhizop.	Krigia biflora	Solanum nigrum
Carex convoluta	Lathyrus venosus	Solidago speciosa
Ceanothus americ.	Lilium philadel.	Staphylea trifolia
Chimaphila umbell.	Liparis liliifolia	Steironema ciliatum
Cirsium altissim.	Lobelia cardinalis	S. lanceolatum
Clematis virgin.	Lonicera dioica	Streptopus roseus
Clintonia boreal.	L. hirsuta	Symplocarpus foet.
Comandra umbellata	Luzula acuminata	Taenidia integerr.
Conopholis americ.	L. Multiflora	Taxus canadensis
Corallorrhiza mac.	Milium effusum	Thalictrum dasycarp.
Corydalis semperv.	Mitchella repens	Thaspium aureum
Cynoglossum offic.	Monotropa uniflora	Tradescantia ohio.
Cystopteris bulbif.	Onoclea sensibilis	Uvularia sessilif.
Desmodium bracteos.	Oryzopsis asperif.	Vaccinium canad.
D. canadense	Osmunda cinnamomea	Veronica serpyllif.
Dicentra canad.	Oxalis violacea	Viburnum lentago
Diervilla lonicera	Panax trifolium	V. trilobum
Dioscorea villosa	Paronychia canad.	Vicia americana
Dirca palustris	Pedicularis canad.	Viola conspersa
Elymus villosus	Physocarpus opul.	V. incognita
Epifagus virgin.	Phytolacca decand.	

Additional Species:

Chrys. Sprengalli
Yellow Lady

Tree : BA : S : Tree : BA : S : Tree : BA : S

Acer negundo
A. rubrum
A. saccharinum
~~A. saccharum~~
Amelanchier sp.
Betula lutea
B. nigra
B. papyrifera
Carpinus carol
Carya cordifor
C. ovata
Celtis occiden
Crataegus sp.

Fagus grandif.
Fraxinus amer.
F. nigra
F. pennsylvan.
Juglans cinere
J. nigra
Ostrya virgin.
Populus deltoi
P. grandident.
P. tremuloides
Prunus americ.
P. pennsylvan.
P. serotina

Prunus virgin.
Quercus alba
Q. bicolor
Q. ellipsoid.
Q. macrocarpa
Q. rubra
Q. velutina
Robinia pseudo
Sorbus americ.
Tilia american
Ulmus american
U. fulva

Distance:

17.5

Actaea sp.
 Adiantum pedat.
 Agrimonia gryp.
 Allium tricocc.
 Amphicarpa brac.
 Anemone quinque.
 A. virginiana
 Anemonella thal.
 Antennaria sp.
 Aplectrum hiem.
 Apocynum andros.
 Aquilegia canad.
 Aralia nudicaul.
 A. racemosa
 Arenaria later.
 Arisaema atrop.
 Asarum canad.
 Aster macrophyll.
 A. sagittifolius
 A. shortii
 Athyrium angust.
 Aureolaria grandif.
 Botrychium vir.
 Brachyelytrum
 Campanula amer.
 Carex albursina
 C. pennsylvan.
 Caulophyllum thal.
 Celastrus scan.
 Circaea latif.
 Claytonia virg.
 Cornus altern.
 C. femina
 C. rugosa
 Corylus americana
 Cryptotaenia canad.
 Cypridium pubesc.
 Cystopteris frag.
 Dentaria laciniata
 Desmodium acumin.
 D. nudiflorum
 Dicentra cucullaria
 Dodecatheon meadia
 Dryopteris spinulosa
 Erigeron pulchellus
 Erythronium albidum

Shrubs & Herbs

Eupatorium purpur.
 Eupatorium rugosum
 Festuca obtusa
 Fragaria virgin.
 Galium aparine
 G. circaezans
 G. concinnum
 G. lanceolatum
 G. triflorum
 Geranium macul.
 Geum canadense
 Goodyera pubesc.
 Habenaria bract.
 Hamamelis virg.
 Helianthus strum.
 Hepatica acutil.
 Heuchera richard.
 Hydrastis canad.
 Hydrophyllum virg.
 Hystrix patula
 Impatiens biflora
 I. pallida
 Isopyrum bitern.
 Lactuca spicata
 Laportea canad.
 Lapoula virgin.
 Lathyrus ochrol.
 Lonicera proclif.
 Lysimachia quadr.
 Maianthemum can.
 Menispermum can.
 Mitella diphylla
 Monarda fistulosa
 Orchis spectab.
 Oryzopsis racem.
 Osmorhiza clayton.
 O. longistylis
 Osmunda clayton.
 Panax quinquef.
 Panicum latifolium
 Parietaria pennsylv.
 Parthenocissus vit.
 Phlox divaricata
 Phryma leptostachya
 Podophyllum pelt.
 Polemonium reptans

Polygonatum commut.
 Polygonatum pubesc.
 Polygonum virgin.
 Potentilla simpl.
 Prenanthes alba
 Pteridium aquil.
 Pyrola elliptica
 Ranunculus abort.
 R. recurvatus
 R. septentrion.
 Rhus radicans
 Ribes americanum
 R. cynosbati
 R. missouriense
 Rosa sp.
 Rubus alleghen.
 R. occidentalis
 R. strigosus
 Sambucus canad.
 Sanguinaria can.
 Sanicula gregaria
 S. marilandica
 Smilacina racemosa
 S. stellata
 Smilax ecirrhata
 S. herbacea
 S. hispida
 Solidago altissima
 S. latifolia
 S. ulmifolia
 Thalictrum dioicum
 Trillium cernuum
 T. flexipes
 T. grandiflorum
 T. recurvatum
 Triosteum perfoliatum
 Uvularia grandiflora
 Veronicastrum virg.
 Viburnum acerifolium
 V. affine
 Viola cucullata
 V. pubescens
 Vitis aestivalis
 V. riparia
 Zanthoxylum americ.
 Zizia aurea

Corey N. L.

Tree	: BA	: S	Tree	: BA	: S	Tree	: BA	: S
Acer negundo			Fagus grandif.			Prunus virgin.		
A. rubrum			Fraxinus amer.			Quercus alba		
A. saccharinum			F. nigra			Q. bicolor		
A. saccharum	23		F. pennsylvan.			Q. ellipsoid.		
Amelanchier sp.			Juglans cinere	40		Q. macrocarpa		
Betula lutea			J. nigra			Q. rubra		
B. nigra			Ostrya virgin.			Q. velutina		
B. papyrifera			Populus deltoi			Robinia pseudo		
Carpinus carol			P. grandident.			Sorbus americ.		
Carya cordifor			P. tremuloides			Tilia american		
C. ovata			Prunus americ.			Ulmus american		
Celtis occiden			P. pennsylvan.			U. fulva		
Crataegus sp.			P. serotina					

Distance: 10.5

			Shrubs & Herbs			
Actaea sp.			Eupatorium purpur.			Polygonatum commut.
Adiantum pedat.			Eupatorium rugosum			Polygonatum pubesc.
Agrimonia gryp.			Festuca obtusa			Polygonum virgin.
Allium tricocc.			Fragaria virgin.			Potentilla simpl.
Amphicarpa brac.			Galium aparine			Prenanthes alba
Anemone quinque.			G. circaezans			Pteridium aquil.
A. virginiana			G. concinnum			Pyrola elliptica
Anemonella thal.			G. lanceolatum			Ranunculus abort.
Antennaria sp.			G. triflorum			R. recurvatus
Aplectrum hiem.			Geranium macul.			R. septentrion.
Apocynum andros.			Geum canadense			Rhus radicans
Aquilegia canad.			Goodyera pubesc.			Ribes americanum
Aralia nudicaul.			Habenaria bract.			R. cynosbati
A. racemosa			Hamamelis virg.			R. missouriense
Arenaria later.			Helianthus strum.			Rosa sp.
Arisaema atror.			Hepatica acutil.			Rubus alleghen.
Asarum canad.			Heuchera richard.			R. occidentalis
Aster macrophyll.			Hydrastis canad.			R. strigosus
A. sagittifolius			Hydrophyllum virg.			Sambucus canad.
A. shortii			Hystrix patula			Sanguinaria can.
Athyrium angust.			Impatiens biflora			Sanicula gregaria
Aureolaria grandif.			I. pallida			S. marilandica
Botrychium vir.			Isopyrum bitern.			Smilacina racemosa
Brachyelytrum			Lactuca spicata			S. stellata
Campanula amer.			Laportea canad.			Smilax ecirrhata
Carex albursina			Lapula virgin.			S. herbacea
C. pennsylvan.			Lathyrus ochrol.			S. hispida
Caulophyllum thal.			Lonicera prolif.			Solidago altissima
Celastrus scan.			Lysimachia quadr.			S. latifolia
Circaea latif.			Maianthemum can.			S. ulmifolia
Claytonia virg.			Menispermum can.			Thalictrum dioicum
Cornus altern.			Mitella diphylla			Trillium cernuum
C. femina			Monarda fistulosa			T. flexipes
C. rugosa			Orchis spectab.			T. grandiflorum
Corylus americana			Oryzopsis racem.			T. recurvatum
Cryptotaenia canad.			Camorhiza clayton.			Triosteum perfoliatum
Cypripedium pubesc.			C. longistylis			Uvularia grandiflora
Cystopteris frag.			Osmunda clayton.			Veronicastrum virg.
Dentaria laciniata			Panax quinquef.			Viburnum acerifolium
Desmodium acumin.			Panicum latifolium			V. affine
D. nudiflorum			Parietaria pennsylv.			Viola cucullata
Dicentra cucullaria			Parthenocissus vit.			V. pubescens
Dodecatheon meadia			Phlox divaricata			Vitis aestivalis
Dryopteris spinulosa			Phryma leptostachya			V. riparia
Erigeron pulchellus			Podophyllum pelt.			Zanthoxylum americ.
Erythronium albidum			Polemonium reptans			Zizia aurea

copy N1
2M1

Tree	BA	S	Tree	BA	S	Tree	BA	S
Acer negundo			Fagus grandif.			Prunus virgin.		
A. rubrum			Fraxinus amer.			Quercus alba		
A. saccharinum			F. nigra			Q. bicolor		
A. saccharum			F. pennsylvan.			Q. ellipsoid.		
Amelanchier sp.			Juglans cinere			Q. macrocarpa		
Betula lutea			J. nigra			Q. rubra		
B. nigra			Ostrya virgin.			Q. velutina		
B. papyrifera			Populus deltoi			Robinia pseudo		
Carpinus carol			P. grandident.			Sorbus americ.		
Carya cordifor			P. tremuloides			Tilia american		
C. ovata			Prunus americ.			Ulmus american		
Celtis occiden			P. pennsylvan.			U. fulva		
Crataegus sp.			P. serotina					

Distance: 23.5

Actaea sp.
 Adiantum pedat.
 Agrimonia gryp.
 Allium tricocc.
 Amphicarpa brac.
 Anemone quinque.
 A. virginiana
 Anemonella thal.
 Antennaria sp.
 Aplectrum hiem.
 Apocynum andros.
 Aquilegia canad.
 Aralia nudicaul.
 A. racemosa
 Arenaria later.
 Arisaema atrop.
 Asarum canad.
 Aster macrophyll.
 A. sagittifolius
 A. shortii
 Athyrium angust.
 Aureolaria grandif.
 Botrychium vir.
 Brachyelytrum
 Campanula amer.
 Carex albursina
 C. pennsylvan.
 Caulophyllum thal.
 Celastrus scan.
 Circaea latif.
 Claytonia virg.
 Cornus altern.
 C. femina
 C. rugosa
 Corylus americana
 Cryptotaenia canad.
 Cypridium pubesc.
 Cystopteris frag.
 Dentaria laciniata
 Desmodium acumin.
 D. nudiflorum
 Dicentra cucullaria
 Dodecatheon meadia
 Dryopteris spinulosa
 Erigeron pulchellus
 Erythronium albidum

Shrubs & Herbs

Eupatorium purpur.
 Eupatorium rugosum
 Festuca obtusa
 Fragaria virgin.
 Galium aparine
 G. circaeazans
 G. concinnum
 G. lanceolatum
 G. triflorum
 Geranium macul.
 Geum canadense
 Goodyera pubesc.
 Habenaria bract.
 Hamamelis virg.
 Helianthus strum.
 Hepatica acutil.
 Heuchera richard.
 Hydrastis canad.
 Hydrophyllum virg.
 Hystrix patula
 Impatiens biflora
 I. pallida
 Isopyrum bitern.
 Lactuca spicata
 Laportea canad.
 Lappula virgin.
 Lathyrus ochrol.
 Lonicera proclif.
 Lysimachia quadr.
 Maianthemum can.
 Menispermum can.
 Mitella diphylla
 Monarda fistulosa
 Orchis spectab.
 Oryzopsis racem.
 Osmorhiza clayton.
 O. longistylis
 Osmunda clayton.
 Panax quinquef.
 Panicum latifolium
 Parietaria pennsylv.
 Parthenocissus vit.
 Phlox divaricata
 Phryma leptostachya
 Podophyllum pelt.
 Polemonium reptans

Polygonatum commut.
 Polygonatum pubesc.
 Polygonum virgin.
 Potentilla simpl.
 Prenanthes alba
 Pteridium aquil.
 Pyrola elliptica
 Ranunculus abort.
 R. recurvatus
 R. septentrion.
 Rhus radicans
 Ribes americanum
 R. cynosbati
 R. missouriense
 Rosa sp.
 Rubus alleghen.
 R. occidentalis
 R. strigosus
 Sambucus canad.
 Sanguinaria can.
 Sanicula gregaria
 S. marilandica
 Smilacina racemosa
 S. stellata
 Smilax ecirrhata
 S. herbacea
 S. hispida
 Solidago altissima
 S. latifolia
 S. ulmifolia
 Thalictrum dioicum
 Trillium cernuum
 T. flexipes
 T. grandiflorum
 T. recurvatum
 Triosteum perfoliatum
 Uvularia grandiflora
 Veronicastrum virg.
 Viburnum acerifolium
 V. affine
 Viola cucullata
 V. pubescens
 Vitis aestivalis
 V. riparia
 Zanthoxylum americ.
 Zizia aurea

Tree	BA	S	Tree	BA	S	Tree	BA	S
Acer negundo			Fagus grandif.			Prunus virgin.		
A. rubrum			Fraxinus amer.			Quercus alba		
A. saccharinum			F. nigra			Q. bicolor		
A. saccharum 165			F. pennsylvan.			Q. ellipsoid.		
Amelanchier sp.			Juglans cinere			Q. macrocarpa		
Betula lutea			J. nigra			Q. rubra		
B. nigra			Ostrya virgin.	30	1	Q. velutina		
B. papyrifera			Populus deltoi			Robinia pseudo		
Carpinus carol			P. grandident.			Sorbus americ.		
Carya cordifor			P. tremuloides			Tilia american		
C. ovata			Prunus americ.			Ulmus american		
Celtis occiden			P. pennsylvan.			U. fulva		
Crataegus sp.			P. serotina					
						Distance: 15		
Actaea sp. wh			Shrubs & Herbs					
Adiantum pedat.			Eupatorium purpur.			Polygonatum commut.		
Agrimonia gryp.			Eupatorium rugosum			Polygonatum pubesc.		
Allium tricocc.			Festuca obtusa			Polygonum virgin.		
Amphicarpa brac.			Fragaria virgin.			Potentilla simpl.		
Anemone quinque.			Galium aparine			Prenanthes alba		
A. virginiana			G. circaezans			Pteridium aquil.		
Anemonella thal.			G. concinnum			Pyrola elliptica		
Antennaria sp.			G. lanceolatum			Ranunculus abort.		
Aplectrum hiem.			G. triflorum			R. recurvatus		
Apocynum andros.			Geranium macul.			R. septentrion.		
Aquilegia canad.			Geum canadense			Rhus radicans		
Aralia nudicaul.			Goodyera pubesc.			Ribes americanum		
A. racemosa			Habenaria bract.			R. cynosbati		
Arenaria later.			Hamamelis virg.			R. missouriense		
Arisaema atrop.			Helianthus strum.			Rosa sp.		
Asarum canad.			Hepatica acutil.			Rubus alleghen.		
Aster macrophyll.			Heuchera richard.			R. occidentalis		
A. sagittifolius			Hydrastis canad.			R. strigosus		
A. shortii			Hydrophyllum virg.			Sambucus canad.		
Athyrium angust.			Hystrix patula			Sanguinaria can.		
Aureolaria grandif.			Impatiens biflora			Sanicula gregaria		
Botrychium vir.			I. pallida			S. marilandica		
Brachyelytrum			Isopyrum bitern.			Smilacina racemosa		
Campanula amer.			Lactuca spicata			S. stellata		
Carex albursina			Laportea canad.			Smilax ecirrhata		
C. pennsylvan.			Lapula virgin.			S. herbacea		
Caulophyllum thal.			Lathyrus ochrol.			S. hispida		
Celastrus scan.			Lonicera proclif.			Solidago altissima		
Circaea latif.			Lysimachia quadr.			S. latifolia		
Claytonia virg.			Maianthemum can.			S. ulmifolia		
Cornus altern.			Menispermum can.			Thalictrum dioicum		
C. femina			Mitella diphylla			Trillium cernuum		
C. rugosa			Monarda fistulosa			T. flexipes		
Corylus americana			Orchis spectab.			T. grandiflorum		
Cryptotaenia canad.			Oryzopsis racem.			T. recurvatum		
Cypripedium pubesc.			Osmorhiza clayton.			Triosteum perfoliatum		
Cystopteris frag.			O. longistylis			Uvularia grandiflora		
Dentaria laciniata			Osmunda clayton.			Veronicastrum virg.		
Desmodium acumin.			Panax quinquef.			Viburnum acerifolium		
D. nudiflorum			Panicum latifolium			V. affine		
Dicentra cucullaria			Parietaria pennsylv.			Viola cucullata		
Dodecatheon meadia			Parthenocissus vit.			V. pubescens		
Dryopteris spinulosa			Phlox divaricata			Vitis aestivalis		
Erigeron pulchellus			Phryma leptostachya			V. riparia		
Erythronium albidum			Podophyllum pelt.			Zanthoxylum americ.		
			Polemonium reptans			Zizia aurea		

Tree	: BA	: S	Tree	: BA	: S	Tree	: BA	: S
Acer negundo			Fagus grandif.			Prunus virgin.		
A. rubrum			Fraxinus amer.			Quercus alba		
A. saccharinum			F. nigra			Q. bicolor		
A. saccharum			F. pennsylvan.			Q. ellipsoid.		
Amelanchier sp.			Juglans cinere			Q. macrocarpa		
Betula lutea			J. nigra			Q. rubra		
B. nigra			Ostrya virgin.			Q. velutina		
B. papyrifera			Populus deltoi			Robinia pseudo		
Carpinus carol			P. grandident.			Sorbus americ.		
Carya cordifor			P. tremuloides			Tilia american		
C. ovata			Prunus americ.			Ulmus american		
Celtis occiden			P. pennsylvan.			U. fulva		
Crataegus sp.			P. serotina					

Distance:

Shrubs & Herbs

Actaea sp.	Eupatorium purpur.	Polygonatum commut.
Adiantum pedat.	Eupatorium rugosum	Polygonatum pubesc.
Agrimonia gryp.	Festuca obtusa	Polygonum virgin.
Allium tricocc.	Fragaria virgin.	Potentilla simpl.
Amphicarpa brac.	Galium aparine	Prenanthes alba
Anemone quinque.	G. circaeazans	Pteridium aquil.
A. virginiana	G. concinnum	Pyrola elliptica
Anemonella thal.	G. lanceolatum	Ranunculus abort.
Antennaria sp.	G. triflorum	R. recurvatus
Aplectrum hiem.	Geranium macul.	R. septentrion.
Apocynum andros.	Geum canadense	Rhus radicans
Aquilegia canad.	Goodyera pubesc.	Ribes americanum
Aralia nudicaul.	Habenaria bract.	R. cynosbati
A. racemosa	Hamamelis virg.	R. missouriense
Arenaria later.	Helianthus strum.	Rosa sp.
Arisaema atror.	Hepatica acutil.	Rubus alleghen.
Asarum canad.	Heuchera richard.	R. occidentalis
Aster macrophyll.	Hydrastis canad.	R. strigosus
A. sagittifolius	Hydrophyllum virg.	Sambucus canad.
A. shortii	Hystrix patula	Sanguinaria can.
Athyrium angust.	Impatiens biflora	Sanicula gregaria
Aureolaria grandif.	I. pallida	S. marilandica
Botrychium vir.	Isopyrum bitern.	Smilacina racemosa
Brachyelytrum	Lactuca spicata	S. stellata
Campanula amer.	Laportea canad.	Smilax ecirrhata
Carex albursina	Lapoula virgin.	S. herbacea
C. pennsylvan.	Lathyrus ochrol.	S. hispida
Caulophyllum thal.	Lonicera prolif.	Solidago altissima
Celastrus scan.	Lysimachia quadr.	S. latifolia
Circaea latif.	Maianthemum can.	S. ulmifolia
Claytonia virg.	Menispermum can.	Thalictrum dioicum
Cornus altern.	Mitella diphylla	Trillium cernuum
C. femina	Monarda fistulosa	T. flexipes
C. rugosa	Orchis spectab.	T. grandiflorum
Corylus americana	Oryzopsis racem.	T. recurvatum
Cryptotaenia canad.	Osmorhiza clayton.	Triosteum perfoliatum
Cypripedium pubesc.	O. longistylis	Uvularia grandiflora
Cystopteris frag.	Osmunda clayton.	Veronicastrum virg.
Dentaria laciniata	Panax quinquef.	Viburnum acerifolium
Desmodium acumin.	Panicum latifolium	V. affine
D. nudiflorum	Parietaria pennsylv.	Viola cucullata
Dicentra cucullaria	Parthenocissus vit.	V. pubescens
Dodecatheon meadia	Phlox divaricata	Vitis aestivalis
Dryopteris spinulosa	Phryma leptostachya	V. riparia
Erigeron pulchellus	Podophyllum pelt.	Zanthoxylum americ.
Erythronium albidum	Polemonium reptans	Zizia aurea

Carey NL.

 Tree : BA : S : Tree : BA : S : Tree : BA : S

Acer negundo
 A. rubrum
 A. saccharinum
 A. saccharum
 Amelanchier sp.
 Betula lutea
 B. nigra
 B. papyrifera
 Carpinus carol
 Carya cordifor
 C. ovata
 Celtis occiden
 Crataegus sp.

Fagus grandif.
 Fraxinus amer.
 F. nigra
 F. pennsylvan.
 Juglans cinere
 J. nigra
 Ostrya virgin.
 Populus deltoi
 P. grandident.
 P. tremuloides
 Prunus americ.
 P. pennsylvan.
 P. serotina

Prunus virgin.
 Quercus alba
 Q. bicolor
 Q. ellipsoid.
 Q. macrocarpa
 Q. rubra
 Q. velutina
 Robinia pseudo
 Sorbus americ.
 Tilia american
 Ulmus american
 U. fulva

321

69

Distance:

31

Actaea sp.
 Adiantum pedat.
 Agrimonia gryp.
 Allium tricocc.
 Amphicarpa brac.
 Anemone quinque.
 A. virginiana
 Anemonella thal.
 Antennaria sp.
 Aplectrum hiem.
 Apocynum andros.
 Aquilegia canad.
 Aralia nudicaul.
 A. racemosa
 Arenaria later.
 Arisaema atror.
 Asarum canad.
 Aster macrophyll.
 A. sagittifolius
 A. shortii
 Athyrium angust.
 Aureolaria grandif.
 Botrychium vir.
 Brachyelytrum
 Campanula amer.
 Carex albursina
 C. pennsylvan.
 Caulophyllum thal.
 Celastrus scan.
 Circaea latif.
 Claytonia virg.
 Cornus altern.
 C. femina
 C. rugosa
 Corylus americana
 Cryptotaenia canad.
 Cypripedium pubesc.
 Cystopteris frag.
 Dentaria laciniata
 Desmodium acumin.
 D. nudiflorum
 Dicentra cucullaria
 Dodecatheon meadia
 Dryopteris spinulosa
 Erigeron pulchellus
 Erythronium albidum

Shrubs & Herbs

Eupatorium purpur.
 Eupatorium rugosum
 Festuca obtusa
 Fragaria virgin.
 Galium aparine
 G. circaezans
 G. concinnum
 G. lanceolatum
 G. triflorum
 Geranium macul.
 Geum canadense
 Goodyera pubesc.
 Habenaria bract.
 Hamamelis virg.
 Helianthus strum.
 Hepatica acutil.
 Heuchera richard.
 Hydrastis canad.
 Hydrophyllum virg.
 Hystrix patula
 Impatiens biflora
 I. pallida
 Isopyrum bitern.
 Lactuca spicata
 Laportea canad.
 Lapula virgin.
 Lathyrus ochrol.
 Lonicera proclif.
 Lysimachia quadr.
 Maianthemum can.
 Menispermum can.
 Mitella diphylla
 Monarda fistulosa
 Orchis spectab.
 Oryzopsis racem.
 Osmorhiza clayton.
 O. longistylis
 Osmunda clayton.
 Panax quinquef.
 Panicum latifolium
 Parietaria pennsylv.
 Parthenocissus vit.
 Phlox divaricata
 Phryma leptostachya
 Podophyllum pelt.
 Polemonium reptans

Polygonatum commut.
 Polygonatum pubesc.
 Polygonum virgin.
 Potentilla simpl.
 Prenanthes alba
 Pteridium aquil.
 Pyrola elliptica
 Ranunculus abort.
 R. recurvatus
 R. septentrion.
 Rhus radicans
 Ribes americanum
 R. cynosbati
 R. missouriense
 Rosa sp.
 Rubus alleghen.
 R. occidentalis
 R. strigosus
 Sambucus canad.
 Sanguinaria can.
 Sanicula gregaria
 S. marilandica
 Smilacina racemosa
 S. stellata
 Smilax ecirrhata
 S. herbacea
 S. hispida
 Solidago altissima
 S. latifolia
 S. ulmifolia
 Thalictrum dioicum
 Trillium cernuum
 T. flexipes
 T. grandiflorum
 T. recurvatum
 Triosteum perfoliatum
 Uvularia grandiflora
 Veronicastrum virg.
 Viburnum acerifolium
 V. affine
 Viola cucullata
 V. pubescens
 Vitis aestivalis
 V. riparia
 Zanthoxylum americ.
 Zizia aurea

Rufus?

Tree	: BA	: S	Tree	: BA	: S	Tree	: BA	: S
Acer negundo			Fagus grandif.			Prunus virgin.		
A. rubrum			Fraxinus amer.			Quercus alba		
A. saccharinum			F. nigra			Q. bicolor		
A. saccharum	105		F. pennsylvan.			Q. ellipsoid.		
Amelanchier sp.			Juglans cinere			Q. macrocarpa		
Betula lutea			J. nigra			Q. rubra		
B. nigra			Ostrya virgin.			Q. velutina		
B. papyrifera			Populus deltoi			Robinia pseudo		
Carpinus carol			P. grandident.			Sorbus americ.		
Carya cordifor			P. tremuloides			Tilia american		
C. ovata			Prunus americ.			Ulmus american		
Celtis occiden			P. pennsylvan.			U. fulva	718	
Crataegus sp.			P. serotina					
						Distance:	24	
			<u>Shrubs & Herbs</u>					
Actaea sp.			Eupatorium purpur.			Polygonatum commut.		
Adiantum pedat.			Eupatorium rugosum			Polygonatum pubesc.		
Agrimonia gryp.			Festuca obtusa			Polygonum virgin.		
Allium tricocc.			Fragaria virgin.			Potentilla simpl.		
Amphicarpa brac.			Galium aparine			Prenanthes alba		
Anemone quinque.			G. circaezans			Pteridium aquil.		
A. virginiana			G. concinnum			Pyrola elliptica		
Anemonella thal.			G. lanceolatum			Ranunculus abort.		
Antennaria sp.			G. triflorum			R. recurvatus		
Aplectrum hiem.			Geranium macul.			R. septentrion.		
Apocynum andros.			Geum canadense			Rhus radicans		
Aquilegia canad.			Goodyera pubesc.			Ribes americanum		
Aralia nudicaul.			Habenaria bract.			R. cynosbati		
A. racemosa			Hamamelis virg.			R. missouriense		
Arenaria later.			Helianthus strum.			Rosa sp.		
Arisaema atror.			Hepatica acutil.			Rubus alleghen.		
Asarum canad.			Heuchera richard.			R. occidentalis		
Aster macrophyll.			Hydrastis canad.			R. strigosus		
A. sagittifolius			Hydrophyllum virg.			Sambucus canad.		
A. shortii			Hystrix patula			Sanguinaria can.		
Athyrium angust.			Impatiens biflora			Sanicula gregaria		
Aureolaria grandif.			I. pallida			S. marilandica		
Botrychium vir.			Isopyrum bitern.			Smilacina racemosa		
Brachyelytrum			Lactuca spicata			S. stellata		
Campanula amer.			Laportea canad.			Smilax ecirrhata		
Carex albursina			Lappula virgin.			S. herbacea		
C. pennsylvan.			Lathyrus ochrol.			S. hispida		
Caulophyllum thal.			Lonicera proclif.			Solidago altissima		
Celastrus scan.			Lysimachia quadr.			S. latifolia		
Circaea latif.			Maianthemum can.			S. ulmifolia		
Claytonia virg.			Menispermum can.			Thalictrum dioicum		
Cornus altern.			Mitella diphylla			Trillium cernuum		
C. femina			Monarda fistulosa			T. flexipes		
C. rugosa			Orchis spectab.			T. grandiflorum		
Corylus americana			Oryzopsis racem.			T. recurvatum		
Cryptotaenia canad.			Osmorhiza clayton.			Triosteum perfoliatum		
Cypripedium pubesc.			C. longistylis			Uvularia grandiflora		
Cystopteris frag.			Osmunda clayton.			Veronicastrum virg.		
Dentaria laciniata			Panax quinquef.			Viburnum acerifolium		
Desmodium acumin.			Panicum latifolium			V. affine		
D. nudiflorum			Parietaria pennsylv.			Viola cucullata		
Dicentra cucullaria			Parthenocissus vit.			V. pubescens		
Dodecatheon meadia			Phlox divaricata			Vitis aestivalis		
Dryopteris spinulosa			Phryma leptostachya			V. riparia		
Erigeron pulchellus			Podophyllum pelt.			Zanthoxylum americ.		
Erythronium albidum			Polemonium reptans			Zizia aurea		

Tree	BA	S	Tree	BA	S	Tree	BA	S
Acer negundo			Fagus grandif.			Prunus virgin.		
A. rubrum			Fraxinus amer.			Quercus alba		
A. saccharinum			F. nigra			Q. bicolor		
A. saccharum			F. pennsylvan.			Q. ellipsoid.		
Amelanchier sp.			Juglans cinere			Q. macrocarpa		
Betula lutea			J. nigra			Q. rubra		
B. nigra			Ostrya virgin.			Q. velutina		
B. papyrifera			Populus deltoi			Robinia pseudo		
Carpinus carol			P. grandident.			Sorbus americ.		
Carya cordifor			P. tremuloides			Tilia american		
C. ovata			Prunus americ.			Ulmus american		
Celtis occiden			P. pennsylvan.			U. fulva		
Crataegus sp.			P. serotina					

19

118

Distance: 27

Shrubs & Herbs

Actaea sp.	Eupatorium purpur.	Polygonatum commut.
Adiantum pedat.	Eupatorium rugosum	Polygonatum pubesc.
Agrimonia gryp.	Festuca obtusa	Polygonum virgin.
Allium tricocc.	Fragaria virgin.	Potentilla simpl.
Amphicarpa brac.	Galium aparine	Prenanthes alba
Anemone quinque.	G. circaeans	Pteridium aquil.
A. virginiana	G. concinnum	Pyrola elliptica
Anemonella thal.	G. lanceolatum	Ranunculus abort.
Antennaria sp.	G. triflorum	R. recurvatus
Aplectrum hiem.	Geranium macul.	R. septentrion.
Apocynum andros.	Geum canadense	Rhus radicans
Aquilegia canad.	Goodyera pubesc.	Ribes americanum
Aralia nudicaul.	Habenaria bract.	R. cynosbati
A. racemosa	Hamamelis virg.	R. missouriense
Arenaria later.	Helianthus strum.	Rosa sp.
Arisaema atror.	Hepatica acutil.	Rubus alleghen.
Asarum canad.	Heuchera richard.	R. occidentalis
Aster macrophyll.	Hydrastis canad.	R. strigosus
A. sagittifolius	Hydrophyllum virg.	Sambucus canad.
A. shortii	Hystrix patula	Sanguinaria can.
Athyrium angust.	Impatiens biflora	Sanicula gregaria
Aureolaria grandif.	I. pallida	S. marilandica
Botrychium vir.	Isopyrum bitern.	Smilacina racemosa
Brachyelytrum	Lactuca spicata	S. stellata
Campanula amer.	Laportea canad.	Smilax ecirrhata
Carex albursina	Lappula virgin.	S. herbacea
C. pennsylvan.	Lathyrus ochrol.	S. hispida
Caulophyllum thal.	Lonicera prolif.	Solidago altissima
Celastrus scan.	Lysimachia quadr.	S. latifolia
Circaea latif.	Maianthemum can.	S. ulmifolia
Claytonia virg.	Menispermum can.	Thalictrum dioicum
Cornus altern.	Mitella diphylla	Trillium cernuum
C. femina	Monarda fistulosa	T. flexipes
C. rugosa	Orchis spectab.	T. grandiflorum
Corylus americana	Oryzopsis racem.	T. recurvatum
Cryptotaenia canad.	Osmorhiza clayton.	Triosteum perfoliatum
Cypripedium pubesc.	C. longistylis	Uvularia grandiflora
Cystopteris frag.	Osmunda clayton.	Veronicastrum virg.
Dentaria laciniata	Panax quinquef.	Viburnum acerifolium
Desmodium acumin.	Panicum latifolium	V. affine
D. nudiflorum	Parietaria pennsyl.	Viola cucullata
Dicentra cucullaria	Parthenocissus vit.	V. pubescens
Dodecatheon meadia	Phlox divaricata	Vitis aestivalis
Dryopteris spinulosa	Phryma leptostachya	V. riparia
Erigeron pulchellus	Podophyllum pelt.	Zanthoxylum americ.
Erythronium albidum	Polemonium reptans	Zizia aurea

Tree	BA	S	Tree	BA	S	Tree	BA	S
Acer negundo			Fagus grandif.			Prunus virgin.		
A. rubrum			Fraxinus amer.			Quercus alba		
A. saccharinum			F. nigra			Q. bicolor		
A. saccharum	104		F. pennsylvan.			Q. ellipsoid.		
Amelanchier sp.			Juglans cinere			Q. macrocarpa		
Betula lutea			J. nigra			Q. rubra	- 250	
B. nigra			Ostrya virgin.			Q. velutina		
B. papyrifera			Populus deltoi			Robinia pseudo		
Carpinus carol			P. grandident.			Sorbus americ.		
Carya cordifor			P. tremuloides			Tilia american		
C. ovata			Prunus americ.			Ulmus american		
Celtis occiden			P. pennsylvan.			U. fulva		
Crataegus sp.			P. serotina					

Distance: 27.5

Actaea sp.	Eupatorium purpur.	Polygonatum commut.
Adiantum pedat.	Eupatorium rugosum	Polygonatum pubesc.
Agrimonia gryp.	Festuca obtusa	Polygonum virgin.
Allium tricocc.	Fragaria virgin.	Potentilla simpl.
Amphicarpa brac.	Galium aparine	Prenanthes alba
Anemone quinque.	G. circaezans	Pteridium aquil.
A. virginiana	G. concinnum	Pyrola elliptica
Anemonella thal.	G. lanceolatum	Ranunculus abort.
Antennaria sp.	G. triflorum	R. recurvatus
Aplectrum hiem.	Geranium macul.	R. septentrion.
Apocynum andros.	Geum canadense	Rhus radicans
Aquilegia canad.	Goodyera pubesc.	Ribes americanum
Aralia nudicaul.	Habenaria bract.	R. cynosbati
A. racemosa	Hamamelis virg.	R. missouriense
Arenaria later.	Helianthus strum.	Rosa sp.
Arisaema atror.	Hepatica acutil.	Rubus alleghen.
Asarum canad.	Heuchera richard.	R. occidentalis
Aster macrophyll.	Hydrastis canad.	R. strigosus
A. sagittifolius	Hydrophyllum virg.	Sambucus canad.
A. shortii	Hystrix patula	Sanguinaria can.
Athyrium angust.	Impatiens biflora	Sanicula gregaria
Aureolaria grandif.	I. pallida	S. marilandica
Botrychium vir.	Isopyrum bitern.	Smilacina racemosa
Brachyelytrum	Lactuca spicata	S. stellata
Campanula amer.	Laportea canad.	Smilax ecirrhata
Carex albursina	Lapula virgin.	S. herbacea
C. pennsylvan.	Lathyrus ochrol.	S. hispida
Caulophyllum thal.	Lonicera prolif.	Solidago altissima
Celastrus scan.	Lysimachia quadr.	S. latifolia
Circaea latif.	Maianthemum can.	S. ulmifolia
Claytonia virg.	Menispermum can.	Thalictrum dioicum
Cornus altern.	Mitella diphylla	Trillium cernuum
C. femina	Monarda fistulosa	T. flexipes
C. rugosa	Orchis spectab.	T. grandiflorum
Corylus americana	Oryzopsis racem.	T. recurvatum
Cryptotaenia canad.	Osmorhiza clayton.	Triosteum perfoliatum
Cypripedium pubesc.	O. longistylis	Uvularia grandiflora
Cystopteris frag.	Osmunda clayton.	Veronicastrum virg.
Dentaria laciniata	Panax quinquef.	Viburnum acerifolium
Desmodium acumin.	Panicum latifolium	V. affine
D. nudiflorum	Parietaria pennsylv.	Viola cucullata
Dicentra cucullaria	Parthenocissus vit.	V. pubescens
Dodecatheon meadia	Phlox divaricata	Vitis aestivalis
Dryopteris spinulosa	Phryma leptostachya	V. riparia
Erigeron pulchellus	Podophyllum pelt.	Zanthoxylum americ.
Erythronium albidum	Polemonium reptans	Zizia aurea