



# LIBRARIES

UNIVERSITY OF WISCONSIN-MADISON

## College of Letters & Science, 1924.

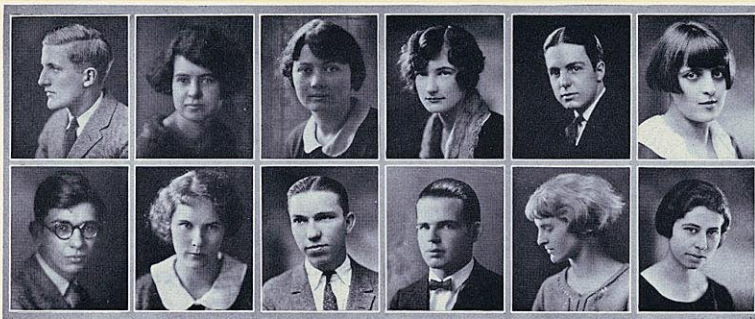
[s.l.]: [s.n.], 1925

<https://digital.library.wisc.edu/1711.dl/JJCCILITT4WHE8A>

<http://rightsstatements.org/vocab/InC/1.0/>

The libraries provide public access to a wide range of material, including online exhibits, digitized collections, archival finding aids, our catalog, online articles, and a growing range of materials in many media.

When possible, we provide rights information in catalog records, finding aids, and other metadata that accompanies collections or items. However, it is always the user's obligation to evaluate copyright and rights issues in light of their own use.



Eschweiler  
Fearing

Evans  
Fenn

Everson  
Field

Fairbanks  
Finley

Fensworth  
Fitch

Fathauer  
Fitch

## The College of Letters and Science

**PAUL ESCHWEILER**  
Madison  
MEDICAL

Zeta Psi.

**EILEEN F. EVANS**  
Milwaukee  
ECONOMICS

Northwestern University 1, 2 ~ 1925 Badger Staff  
~ Advisor of International Club Y. W. C. A. 3, 4.  
Thesis: Red "In" ~ "Out" ~ Public Work to Prevent  
Unemployment.

**DOROTHY A. EVERSON**  
Hudson  
SOCIOLOGY

River Falls State Normal 1, 2 ~ Y. W. C. A. 3, 4;  
Vespers Club 4 ~ S. G. A. Board 3 ~ Social Science  
Club 4.  
Thesis: A Study of the Exemptions for Dependents  
of Dane County Based upon a Study of the Income Tax  
Returns for 1922.

**ISABELLE ADELAIDE FAIRBANKS**  
Springfield, Ohio  
SOCIOLOGY  
Wittenberg College 1 ~ Kappa Alpha Theta.

**RICHARD WIGGAN FENSWORTH**  
Janesville  
CHEMISTRY

Phi Gamma Delta ~ Skull and Crescent ~ Glee  
Club ~ Haresfoot 2 ~ 1924 Prom Fox Trot Com-  
mittee.  
Thesis: Preparation of "Novocain" etc. from Nicot-  
tine.

**MARGARET L. FATHAUER**  
Chicago, Illinois  
SOCIOLOGY

1923-24 Badger Staff Classes Editor 4 ~ W. A. A.  
~ Ouring Club.

**KENNETH FLEXNER FEARING**  
Oak Park, Illinois  
ENGLISH

Indian Reservation 1, 2 ~ Editor Literary Magazine.

**CAMILLA FENN**  
Prophetstown, Illinois  
SOCIOLOGY

Grafton Hall 1 ~ Kappa Kappa Gamma.

**TED H. FIELD**  
Rice Lake  
POLITICAL SCIENCE

Phi Kappa Tau ~ Y. M. C. A. ~ Inner Circle 1 ~  
Sophomore Commission 2 ~ News Sheet 2 ~ Presby-  
terian Student Cabinet 2, 3, 4; Finance Committee 3;  
Social Chairman 4 ~ Athenae Literary Society 1, 2 ~  
Lieutenant R. O. T. C. ~ President Guard 3 ~ Student  
Senate 4 ~ Senior Finance Committee.  
Thesis: The Development and Legality of Zoning.

**GEORGE WILLIAM FINLEY**  
Fontana  
CHEMISTRY

**MILDRED ELIZABETH FITCH**  
Milwaukee  
HUMANITIES  
George Washington University 1.

**DOROTHY HELEN FITCH**  
Hudson, South Dakota  
MATHEMATICS

Yankton College 1, 2 ~ Junior Mathematics Club  
3, 4 ~ Intercollegiate Club 3.

**ELIZABETH A. WATERS, B.S., '85**  
Principal of Fond du Lac High School and Regent of University of Wisconsin

MISS WATERS has the honor of being the only woman ever elected to the Kiwanis Club. She was elected to membership in recognition of her educational services to the state. The university can point with pride to Miss Waters, as one who is giving a splendid example of the utility of higher education for women.

Miss Waters, we are sure, could ably fill a senatorship, serve as representative from

Wisconsin in the House at Washington, for she is a striking public speaker. When in school she was a member of Gamma, and took the Lewis Prize for the best commencement oration. She has held the position of principal in the high school at Neerab, and in the German and English Academy at Fond du Lac. She has been principal of the Fond du Lac high school since 1898.

