



LIBRARIES

UNIVERSITY OF WISCONSIN-MADISON

When two that love are parted.

New York: Boosey & Hawkes, Inc. (W. 23rd St.), 1895

<https://digital.library.wisc.edu/1711.dl/5M2KTRIJD7YPB9A>

<http://rightsstatements.org/vocab/NKC/1.0/>

The libraries provide public access to a wide range of material, including online exhibits, digitized collections, archival finding aids, our catalog, online articles, and a growing range of materials in many media.

When possible, we provide rights information in catalog records, finding aids, and other metadata that accompanies collections or items. However, it is always the user's obligation to evaluate copyright and rights issues in light of their own use.

P. 100 Fisher

N^o. 1 IN D^b



NEW EDITION.

SUNG BY
MISS CLARA BUTT.

N^o. 2 IN D



5

WHEN TWO THAT LOVE ARE PARTED

(LUNGI DAL CARO BENE)

Song

BY

SECCHI.

With Italian and English Words

THE ENGLISH TRANSLATION BY

THEO. MARZIALS

Arranged by

* A * L *

PRICE 50 CENTS NET

B · H · B

Boosey & Hawkes Belwin

43-45-47 WEST 23RD STREET NEW YORK, N. Y.

SOLE DISTRIBUTORS, U. S. A.
FOR

Boosey & Hawkes, Inc.

NEW YORK, U. S. A.

ANY PARODIED REPRESENTATION OF THIS COMPOSITION IS STRICTLY PROHIBITED
PRINTED IN U. S. A. — ALL RIGHTS RESERVED

BOOSEY & HAWKES
LTD.
295 REGENT STREET
LONDON, ENGLAND

BOOSEY & HAWKES
(Australia) LTD.
NATIONAL BUILDING
250 PITT ST.
SYDNEY, AUSTRALIA

BEN KLINE MUSIC CO.
116 W. JEFFERSON ST.
SYRACUSE, N. Y.

WHEN TWO THAT LOVE ARE PARTED.

(LUNGI DAL CARO BENE.)

English words by
THEO. MARZIALS.

SECCHI.

Arranged by
A. L.

Largo.

VOICE.

PIANO.

largo con espress.

When

rit: e decres.

con molto espress.

Lun - gi dal ca - ro be - ne,
two that love are part - ed,

dolce

* This note in voice and accompaniment to be omitted when sung in Italian.

Vi - ve - re non... poss' - i - o!
 Ne - ver in life... to... meet a - gain,

So - no in un mar... di pe - ne. Lun - gi dal
 E - ven the bra - vest heart - ed But live to'

stringendo un poco *con espress.*
 ca - ro, dal ca - ro be - ne, Sen - to man -
 lan - guish In bit - ter an - guish, And on - ly

- car, man - car... il cor.
 Death can heal... the pain.

rit: e decres.

When two that love are parted.

p dolce espress.

Un dolc' es - tre - mo... son - - no,
Had they no hope to... guide them,

p dolce espress.

Se lei mi - rar non pon - - no, Mi chiu - dai
Where ought can ne'er di - - vide them, Their lives were

lu - - mi an - - cor...
lived all in vain...

pp

pp dolce assai

Lun - gi dal ca - - ro be - - ne,
When two that love are part - - ed,

pp dolce assai

Vi - ve - re non poss' i - o! So - no in un mar di
 Ne - ver in life to meet a - gain, E - ven the bra - vest

f cres. e stringendo colla voce

pe - - ne, Lun - gi dal ca - ro, dal ca - ro be - - ne, Sen - to man -
 heart - ed But live to lan - guish In bit - ter an - guish, And on - ly

stringendo e con anima

stringendo f

- car, man - car. . il cor, Sen - to man - car, man -
 Death can heal the pain, And on - ly Death can

ad lib. Adagio

ff colla voce

- car. il cor.
 heal the pain

f decres. pp

When two that love are parted.

OTHER RECENT SUCCESSFUL SONGS BY EMINENT COMPOSERS

No. 1 in G MINOR

HEAR ME! YE WINDS AND WAVES.

No. 2 in A MINOR

Handel
Arranged by
A. L.

Largo

Here me ye winds and waves! Your help proud Cæ-sar craves! Bring to my ach-ing breast Peace and e-ter-nal
rest! No hope in Heav'n a-bove. And torn from all I love, and torn from all I love, Des-pair now

Copyright MDCCCV by Bossey & Co.

No. 1 in D

NOW SLEEPS THE CRIMSON PETAL

No. 3 in F

No. 2 in E♭

Words by TENNYSON.

Sung by Mr. John McCormack.

Music by ROGER QUILTER.

No. 4 in G♭

p Slow, with emphasis.

Now sleeps the crimson petal, now the white; Nor waves the cypress in the palace walk; Nor winks the gold fin in
the porphyry font; The fire-fly wa-kens: waken thou with me. Now folds the lily all her sweet-ness

with passion. *pp*

Copyright MCMIV by Bossey & Co.

No. 1 in D♭

SHIPS THAT PASS IN THE NIGHT.

No. 2 in E♭

No. 3 in G

Words by LONGFELLOW.
From "Tales of a Wayside Inn."

Music by T. WILKINSON STEPHENSON.

Slowly and with feeling.

Ships that pass in the night, and speak each other in passing, On-ly a signal shown and a dis-tant voice in the
darkness; So on the o-c-ean of life— we pass and speak one an-oth-er,

mf *dim.* *p* *mf* *dim.* *p* *mf* *cresc.* *mf* *cresc.*

Copyright MCMXIV by Bossey & Co.

OTHER RECENT SUCCESSFUL SONGS BY EMINENT COMPOSERS

No. 1 in E \flat



BOIS EPAIS

(SOMBRE WOODS)

No. 2 in F



Music by LULLY, (1684)
Arr. by A. L.

Largo

Bois é-pais re-dou - ble ton om - bre, Tu ne sau - rais être as-sez som - bre, Tu ne peux trop ca - cher Mon
Som-bre woods, ye glades dark and lone-ly, Where midnight gloom enters on - ly, Oh! hide my slighted love In

mal-heur - eux a-mour. Bois é-pais re-dou - ble ton om - bre, Tu ne sau - rais être as-sez som - bre, Tu
your un-bound-ed night. Som-bre woods, Ye glades dark and lone - ly. Where midnight gloom enters on - ly, Oh!

Copyright MCCCCXCII by Boosey & Co.

No. 1 in B \flat



THE SHIPS OF ARCADY

No. 2 in D



Music by
MICHAEL HEAD

Words by
FRANCIS LEDWIDGE.

Moderato (♩ = 126)

Thro' the faint-est fi - li-gree O - ver the dim - wa - ters go

Lit-tle ships of Ar - ca-dy When the morning moon is low.

Copyright MCMXIX by Boosey & Co.

No. 1 in D



SILENT STRINGS

No. 2 in F



Music by
GRANVILLE BANTOCK

Words by
HELEN TAYLOR

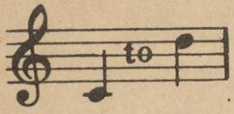
Andante con sentimento
pdolente

Si - lent strings, Long have you mu - ted lain, Strings of my heart, - Un-touched by joy or pain.

Si - lent strings, Oh, - when were you played up-on?

Copyright MCMXXIX by Boosey & Co., Ltd.

Nº 1 in C



EVER IN MY MIND

Nº 2 in E



Words by
HELEN TAYLOR

Music by
KENNEDY RUSSELL

Andante mp

VOICE Out of

PIANO mf rit mp

sight... But ev - er in... my mind, My life's de -

- light, So lov - ing and so kind. Through lone - ly

nev - er can de - part. Of lips that smile_ Of

eyes that soft - ly shine, And all the while More

rit

dear - ly, tru - ly mine.

"HEAVENLY MUSIC!" - So You Will Proclaim
 THIS GREATEST BALLAD OF MANY YEARS
 FEATURED BY AMERICA'S PREMIER BARITONE
 REINALD WERRENRATH

YOUR SONG FROM PARADISE

Words by
 MONTEREY P. BROOKTON

No. 1 in F No. 2 in A^b No. 3 in B^b

Music by
 SYDNEY BARLOW BROWN

Andantino con moto

p

But still I hear the bells of twi-light ring-ing, And I can see the love-light in your

mf

eyes, As o'er the dai - sy fields I hear you sing-ing Your song di - vine from Par - a -

mf

dise - "I love you, I love you, I love you," A-cross the long, long years I'll hear you

pp

sing-ing, "I love you, I love you, I love you," Your song di-vine from Par - a - dise.

ppp *slowly*

Copyright MCMXXVII by Boosey & Co., Ltd.

Boosey & Co., Ltd. - THE HOUSE OF SONG FAME - NEW YORK & LONDON

OTHER RECENT SUCCESSFUL SONGS BY EMINENT COMPOSERS

Words by DENA TEMPEST Music by VERNON EVILLE

UPON A GAY MORNING

Tempo di Minuetto *poco rit.* *a tempo.*

I stood there to lis - ten In green of the glade, Then to the gay sing - er This an - swer was made -

mp *poco rit.* *a tempo.*

con espressione *rit. ten.* *mf* *a little slower* *f*

"Skies blu - er, flow'rs fair - er There nev - er will be, For I'm lov - ing you dear - er Than

rit. *p* *colla voce* *mf* *f*

you're loving me!

Copyright MCMXXV by Boosey & Co., Ltd.

Lyric by AUBREY DOWDON Music by MAURICE BESLY

THE SECOND MINUET

Tempo di Minuet *No. 2 in B^b*

He fell at once in love with her (At least so Grand - ma said,) And that is all a - bout the Ball that I to tell you

p

ad lib. *delicatamente*

dare, 'Cos Grand - pa - pa and Grand - ma - ma are sleeping o - ver there; But Grand - pa - pa and Grand - ma - ma had nev - er real - ly

(colla voce) *p*

met When Grand - papa kissed Grand - mama in the Second Minuet.

Copyright MCMXXIV by Boosey & Co.

Words by JEFFERY LANG Music by HARRY S. PEPPER

THE SNOW-MAN

Lightly *No. 1 in E^b* *No. 2 in G*

I found a snow - man ver - y white and tall - I found a snow - man with a round white head, I

rall.

gave him a clay pipe to com - fort him when all The kind folk who loved him were fast a - sleep in bed.

rall. *a tempo.*

Copyright MCMXXVI by Boosey & Co., Ltd.