



# LIBRARIES

UNIVERSITY OF WISCONSIN-MADISON

## Dialogue part: Sheep. [189-?]

Kerker, Gustave, 1857-1923; Morton, Hugh, 1865-1916  
[s.l.]: [s.n.], [189-?]

<https://digital.library.wisc.edu/1711.dl/UVT67RPGI6F4W9B>

Based on date of publication, this material is presumed to be in the public domain.

For information on re-use see:

<http://digital.library.wisc.edu/1711.dl/Copyright>

The libraries provide public access to a wide range of material, including online exhibits, digitized collections, archival finding aids, our catalog, online articles, and a growing range of materials in many media.

When possible, we provide rights information in catalog records, finding aids, and other metadata that accompanies collections or items. However, it is always the user's obligation to evaluate copyright and rights issues in light of their own use.

Part No. 20

Set No.

DIALOGUE PART  
OF

*Sheep*

IN

BELLE OF NEW YORK

PROPERTY OF

TAMS-WITMARK MUSIC LIBRARY, Inc.

115 W. 45th STREET, Inc.

NEW YORK CITY  
115 W. 45th ST., N. Y. C.

THE UNIVERSITY OF CHICAGO

PHYSICS DEPARTMENT

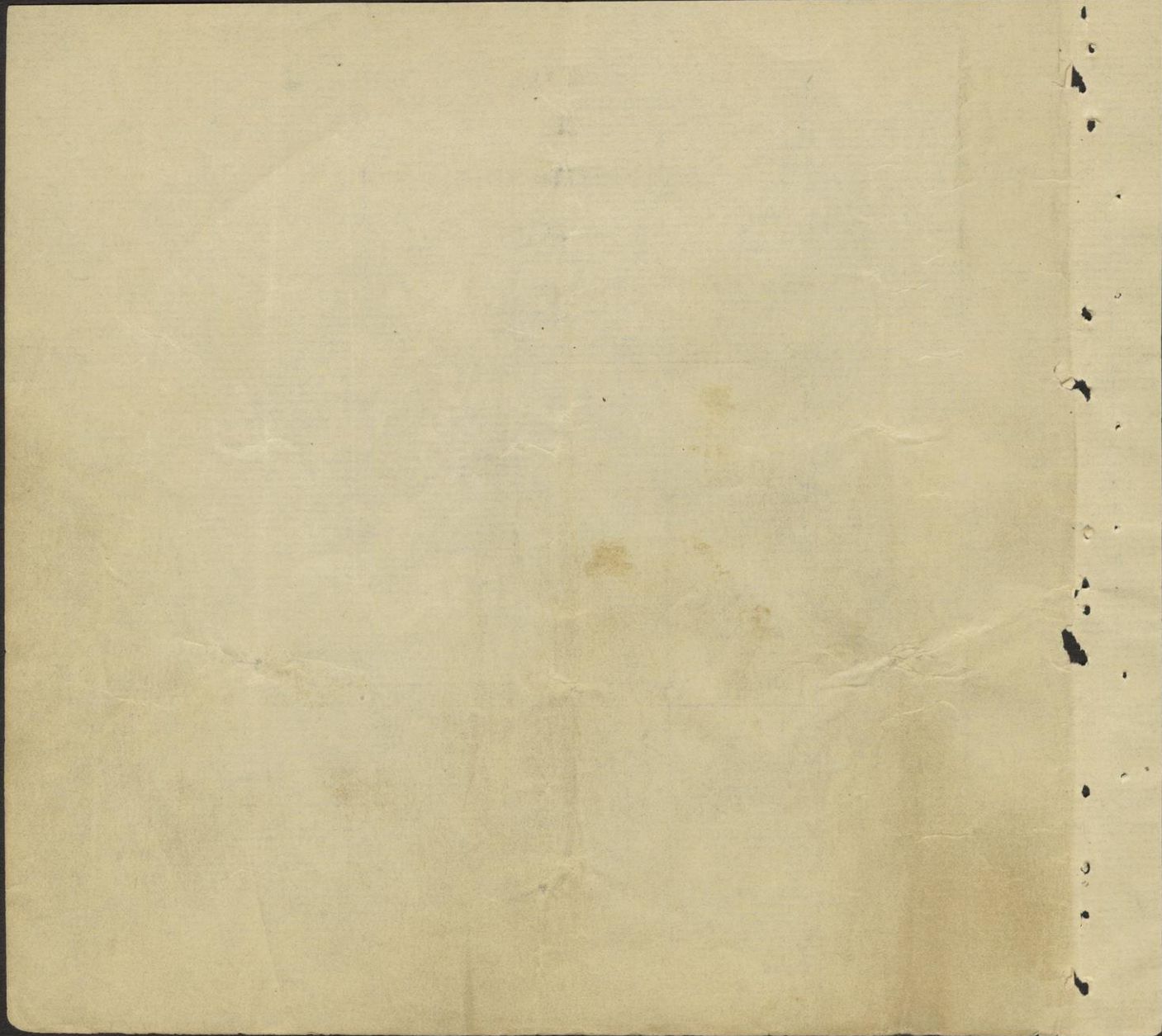
PHYSICS 309

LECTURE NOTES

S H E E P

I N

"THE BELLE OF NEW YORK."



SHEEP  
IN  
THE BELIE OF NEW YORK  
ACT I

.....Oh! Mr. Brenson.  
(Enter with others)

.....marry us sir.  
(Behind Cora and Harry) I beg your pardon.

.....read your lines.  
(C) But I am really to proceed. <sup>and</sup> ?

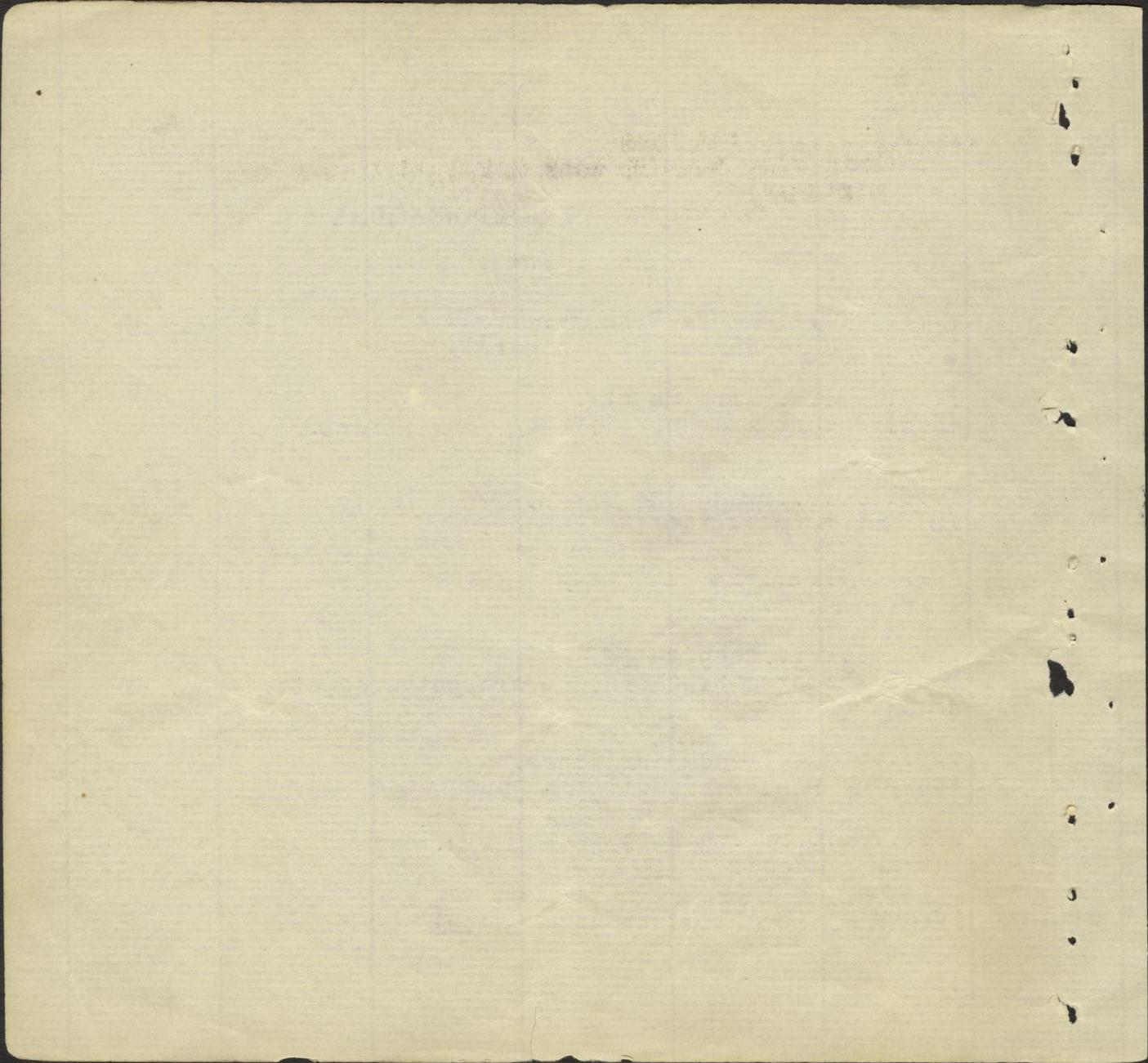
.....are you ready?  
I suppose so.

.....they're off .  
Dearly beloved brethern, we are gathered etc., (Bus. of  
crash)

.....read your lines.  
(Mopping his brow) Well I'm just a bit nervous.

.....what is it bay run.  
Let us proceed.

(Crash again all start enter Mugg)



.....I'm lost.

(Exit Fifi through door R.I.E. followed by  
minister)



THE GREAT EASTERN

INSURANCE CO. LTD.

