



LIBRARIES

UNIVERSITY OF WISCONSIN-MADISON

Annual reports of the officers of the Madison Park and Pleasure Drive Association for the years ending December 31, 1927 and December 31, 1928 with reports of annual meetings held May 4, 1927, May 2, ...

Madison, Wisconsin: [s.n.], [s.d.]

<https://digital.library.wisc.edu/1711.dl/P7NWUZALYHOUB80>

This material may be protected by copyright law (Title 17, US Code).

Original material owned by Madison Public Library.

For information on re-use see:

<http://digital.library.wisc.edu/1711.dl/Copyright>

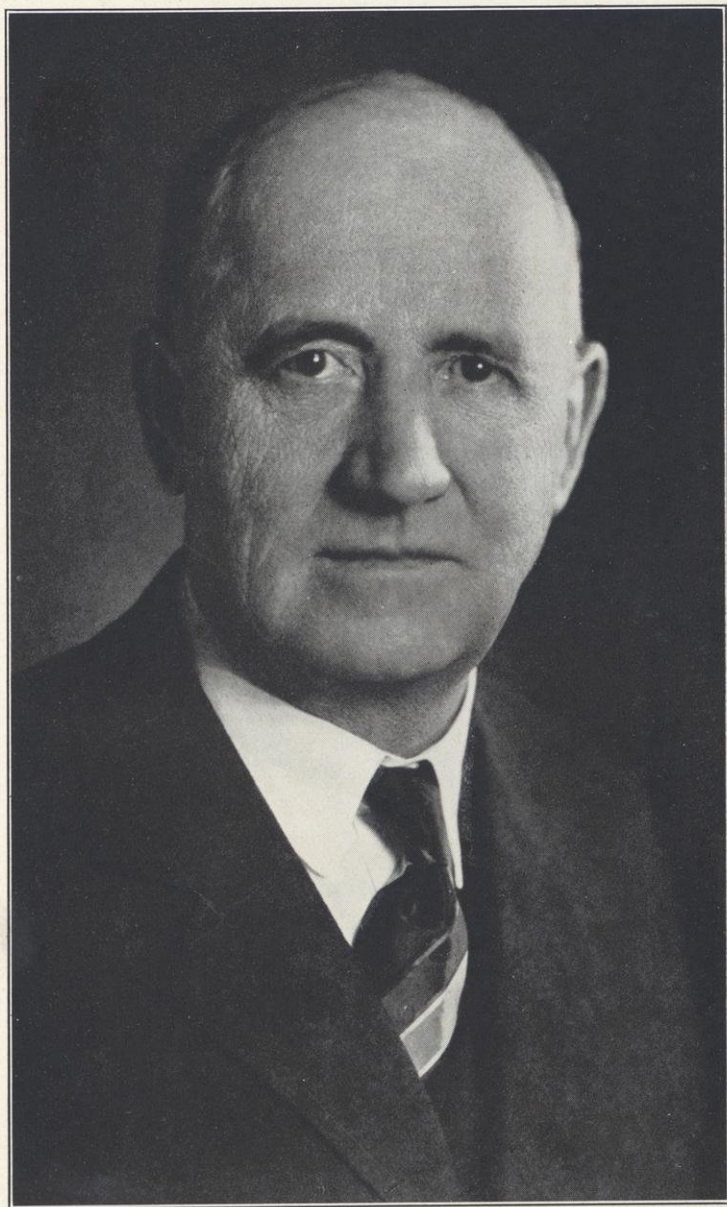
The libraries provide public access to a wide range of material, including online exhibits, digitized collections, archival finding aids, our catalog, online articles, and a growing range of materials in many media.

When possible, we provide rights information in catalog records, finding aids, and other metadata that accompanies collections or items. However, it is always the user's obligation to evaluate copyright and rights issues in light of their own use.

The Madison Park and Pleasure Drive Association

ANNUAL REPORTS FOR THE YEARS
1927 ————— 1928 ————— 1929





Ernest N. Warner, President Madison Park and Pleasure Drive Association

Annual Reports
of the
Officers of the
**Madison Park and Pleasure
Drive Association**



For the Years Ending December 31, 1927
and December 31, 1928

with

Reports of Annual Meetings
Held May 4, 1927, May 2, 1928
and May 8, 1929



The Annual Meeting
of the
Madison Park and Pleasure Drive
Association
Held May 4, 1927

The annual meeting of the Madison Park and Pleasure Drive Association was held in the auditorium of the City Library, May 4, 1927.

The meeting was called to order by Ernest N. Warner, President.

The report of the Treasurer was read and placed on file.

The report on behalf of the Board of Directors was made by President Ernest N. Warner.

On motion of William Ryan the following officers were elected for the ensuing year:

President—Ernest N. Warner.

Vice-President—Frank W. Cantwell.

Secretary—John L. Bourke.

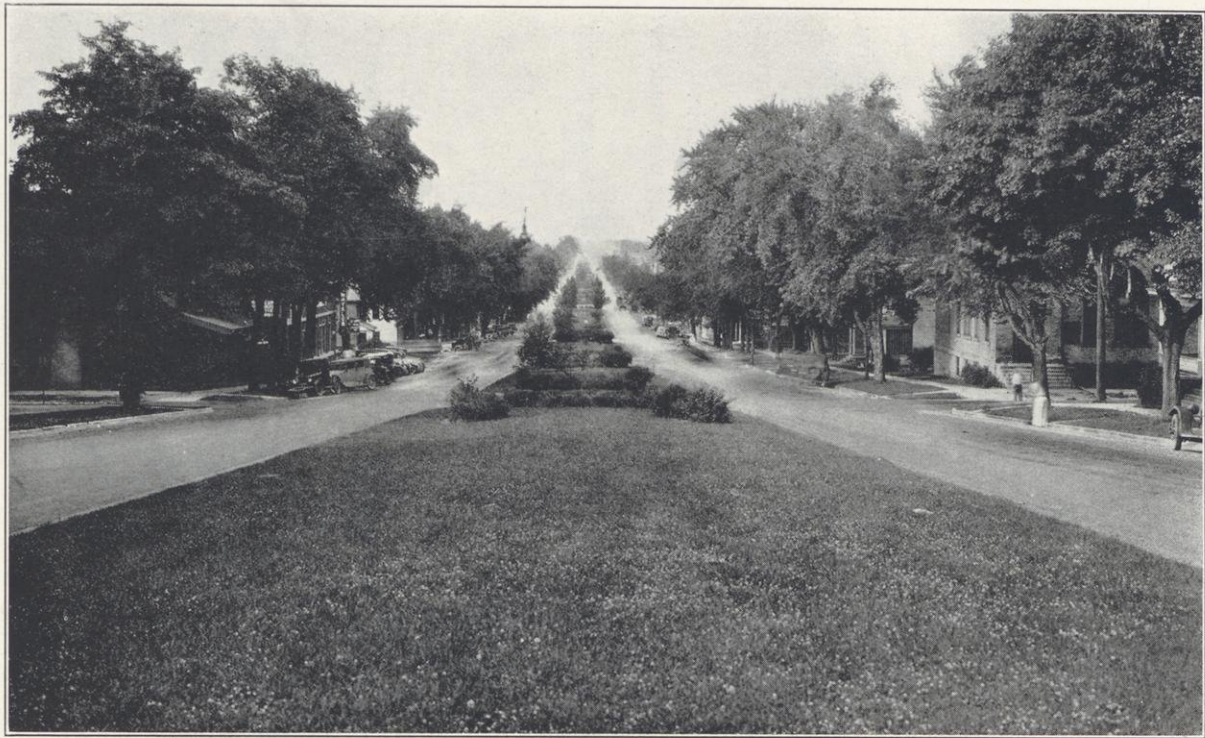
Treasurer—Frank W. Hoyt.

Directors—Corydon G. Dwight, Frank W. Hoyt, Herbert C. Schenk, Fred M. Schlimgen, D. C. Sullivan.

Upon motion of Mr. Aberg a resolution was adopted prohibiting fishing in the lagoons of Tenney Park and Henry Vilas Park.

On like motion the President was authorized to appoint a committee of three to cooperate with the State Conservation Commission in securing a site and in the location of a bass hatchery and aquarium in one of the parks—preferably Henry Vilas Park.

On motion the meeting adjourned.

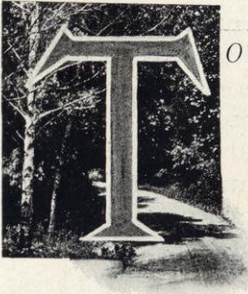


East Washington Avenue Boulevard

President's Report

1927

Made on Behalf of the Board of Directors of the Madison
Park and Pleasure Drive Association



*To the Members of the Madison Park and
Pleasure Drive Association:*

This meeting marks the thirty-fifth anniversary of the Madison Park and Pleasure Drive Association. Although request was made of the City Council for funds with which to publish the reports of the Association, other pressing needs seemed so heavy that the provision for printing the report was omitted from the 1926 budget. The voluntary contributions were sufficiently liberal so that, after placing Lake Mendota and Farwell Drives in excellent condition, there remained in the general subscription account funds sufficient to justify the printing of the report, and near the close of the year 1926, reports covering the years 1924, 1925, and the financial statement up to and including November 15, 1926, were published and distributed to the contributors.

In this report appear the resolutions upon the death of the Honorable John M. Olin and Honorable Charles N. Brown, together with a likeness of Mr. Charles N. Brown as frontispiece.

Farwell Drive

As successor to Mr. Brown, who had been an officer, either as secretary or vice-president, over a period continuously from its organization until the time of his death, Mr. Frank W. Cantwell was elected vice-president at the meeting a year ago, and very largely through the efforts of Mr. Cantwell, special subscriptions were raised in the amount of \$2,660 to assist in permanently improving Farwell Drive. In addition to the special subscriptions, there was expended from the general funds of the Association more than \$5,000 on Farwell Drive, relocating the course of the "S" curve at Maple Bluff and extending the concrete from the top of the bluff to the foot of the hill at the J. B. Ramsay

home. Patching and oiling was done on through Woodward's Grove to the grounds of the Wisconsin State Hospital, putting this drive in the best shape it has been in many years.

As a pleasure drive only Farwell Drive would be in condition to stand up for several years without great expense of maintenance, but with the development of residential property along the course of this drive, there comes a demand for increased service traffic, including auto bus. This class of service is beyond anything that has been contemplated by the Madison Park and Pleasure Drive Association and the municipalities who receive the tax moneys for the development along the course of our drives must rapidly assume and permanently carry the cost of the maintenance for such purely public demands.

Lake Mendota Drive

Lake Mendota Drive had in recent years been surfaced with concrete over a considerable portion of its course. During the season of 1926, in cooperation with the University, Lake Mendota Drive was regravelled from the Bay Road on to Eagle Heights, the Association meeting the entire expense of gravelling the easterly side of the double drive. The amount expended by the Association in this work was \$1,052.50.

Owen Parkway Drive

The Association administered the funds set aside for park purposes within the city. Permanent park improvement was completed on Owen Parkway Drive from Owen Park to Farley Avenue. The most urgent need for this present year is the improvement of Owen Parkway Drive from Farley Avenue on to Sunset Point, and the grading and surfacing of the connecting road between Owen Parkway Drive on the easterly side of the University farm to the Sauk Road. Title to this driveway has been in the Association for a great many years. Much planting was done many years ago, but the drive has been sadly neglected and has been utterly impassable much of the time. The time seems now to have arrived when this stretch of approximately three-quarters of a mile should be brought into harmony with the rest of our system as a real pleasure drive.

City Parks

The most significant permanent improvement last year was the construction of a concrete road through Brittingham Park. It was built by the city at a cost of approximately \$40,000. The traffic has been so heavy through this park that it seemed wisest to build the concrete road. The grade established by the City Engineer has brought the roadway, through much of its course, above the level of the park, and again the problem will confront the city of adequately grading the park to fit the new road grade.

The city has made available for public use by remitting the taxes on the same, property owned by the Madison Parks Foundation on Lake Monona, and has tentatively provided a bond issue to purchase this property for park purposes at a cost of approximately \$100,000.

The City Auditor reports moneys spent for park purposes during 1926 the sum of \$114,041.29, which with appropriations heretofore made, makes a total appropriated by the city for park purposes of \$1,162,316.62. Special subscriptions for 1926 were \$2,660, general subscriptions \$4,359.90, which together with voluntary subscriptions heretofore made for park work, amount to \$437,473.08.

The published report, covering the years 1924-1925-1926, contains detailed statements of expenditures both within and without the city on parks and drives for 1926. These published reports are available to all members of the Association, and in view of the fact that they have already been published and distributed, more detailed reference to the work of the Association for last year is not made in this report.

City Tree Ordinance

After many years of agitation and in harmony with Madison's purpose to go forward in the care of her public areas and the beautification of the city, the Common Council of the city passed a tree ordinance, which received the approval of the Mayor on August 18, 1926. The responsibility of carrying out this ordinance was placed with the Madison Park and Pleasure Drive Association. It provides among other things, "No person, corporation, or association shall plant, cut, prune, or remove any living tree or shrub in a public highway in the City of



Tenny Park

Madison, or cut, disturb, or interfere in any way with the roots of any tree, to the extent of causing serious injury to such tree, in such public highway, or spray any such trees or shrubs with any chemicals or insecticides without written permit of the Madison Park and Pleasure Drive Association."

The ordinance then provides for the appointment by the Madison Park and Pleasure Drive Association of such person or persons as it may deem necessary to take charge of and direct the work authorized to be done under the tree ordinance by the Association. The Council adopted a budget provision of approximately \$9,400 for the carrying out of this ordinance, and after the adoption of the budget provision, the Board of Directors elected as City Forester and Assistant Superintendent to take charge of this particular work, Mr. James G. Marshall, a graduate of the School of Architecture of the University of Illinois. Mr. Marshall comes to the work with the required technical knowledge and with practical experience as assistant to the City Forester of Lake Forest, Illinois.

Future Development Committee

A Future Development Committee for Madison has been constituted to consider the present status and future needs of our city. The Executive Committee has outlined the work for thirteen sub-committees, one of which is to be known as the Parks and Drives Committee, which is asked to study and report on:

- (1) The relation of park area to population,
- (2) The distribution of park areas with reference to convenience and intensive use,
- (3) The equipment of parks according to location and use,
- (4) Recommendations concerning the acquisition of future park areas,
- (5) The planning of park areas in outlying and suburban additions,
- (6) The present and proper relations between the city and the Madison Park and Pleasure Drive Association, and
- (7) The development of connecting parkways.

Appointments to this committee included the President of the Association, Mrs. Marshall F. Browne, H. C. Schenk, J. B. Ramsay, and M. B. Olbrich.

The press of the city is giving full publicity to the plans of Mayor Schmedeman in the appointment of this Future Development Committee, and has published in full the report of John Nolen entitled "Madison, a Model City," and the report of Harland K. Bartholomew, City Planner of St. Louis.

The importance of a determined effort to carry out the recommendations in these two comprehensive, farseeing surveys can not be too urgently stressed. This voluntary Association has now functioned for more than a third of a century. The tax on the time and strength of individuals is greater than the city should ask, and most earnest consideration should be given to the recommendation made by Mr. Nolen sixteen years ago that "Madison must realize, as other cities have realized, that large and permanent results are possible only through the regular machinery of the city government, and democratic ideals of city life should make citizens unwilling to accept the benefits of public improvements without contributing their share toward the expenses that are necessarily involved. A city park system cannot be made by private efforts, no matter how persistent, well-directed or generous they may be. The power and purse of the public are needed."

One of the two greatest needs suggested by Mr. Nolen was "the creation of an official park commission." This is a problem that will be considered by the sub-committee of the Future Development Committee, and suggestions are invited in order that the wisest thing for Madison in the way of a park commission can be suggested and carried out.

Provision has been made by the City Council in its budget for 1927 for the sum of \$140,573.92 to be expended for park and recreational purposes. Voluntary subscriptions were invited on the postal card plan as has been done for many years, and at the present time \$3,669.50 has been subscribed. It is hoped that additional general subscriptions will be made and that special subscriptions can be obtained along the course of drives where permanent improvement is made, which carries with it a special benefit to abutting property. The special advantages to prop-

erty along the course of the pleasure drives have been recognized for several years, and special subscriptions have been made that substantially increase the funds available for making permanent road and drive improvements.

Respectfully submitted,

ERNEST N. WARNER,

President



Municipal Golf Course from 6th Tee

The Annual Meeting
of the
Madison Park and Pleasure Drive
Association
Held May 2, 1928

The annual meeting of the Madison Park and Pleasure Drive Association was held in the auditorium of the City Library, May 2, 1928.

The meeting was called to order by Ernest N. Warner, President.

The report of the Treasurer was read and placed on file.

The report on behalf of the Board of Directors was made by President Ernest N. Warner.

On motion of Ira Cole the following officers were elected for the ensuing year:

President—Ernest N. Warner

Vice-President—Frank W. Cantwell

Secretary—John L. Bourke

Treasurer—Frank W. Hoyt

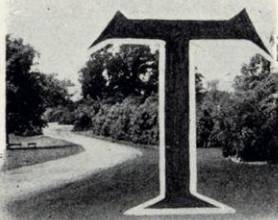
Directors—Corydon G. Dwight, Frank W. Hoyt, Herbert C. Schenk, Fred M. Schlimgen, D. C. Sullivan.

On motion the meeting adjourned.

President's Report

1928

Made on Behalf of the Board of Directors of the Madison
Park and Pleasure Drive Association



*To the Members of the Madison Park
and Pleasure Drive Association:*

This is the thirty-sixth anniversary meeting of the Madison Park and Pleasure Drive Association. Definite progress towards an enlarged park program for Madison has been made during the past year.

The Future Development Committee of Madison, appointed by Mayor Schmedeman, has functioned through sub-committees, one on parks and drives to which was referred several problems in connection with Madison's parks. The committee, of which the president of the Madison Park and Pleasure Drive Association was chairman, gave particular attention during the past year to the matter of the present and proper relations between the city and the Madison Park and Pleasure Drive Association, and near the close of last year communicated its conclusions to Mayor Schmedeman as follows:

A meeting of the sub-committee of the Future Development Committee for Madison, appointed by you, to consider the relation of the Madison Park and Pleasure Drive Association to the city and other matters relating to parks and drives, met and formally went over the matters referred to it. Individual committee members had from time to time expressed themselves, but hadn't before formally given expression to their views as a committee.

Without undertaking to make a complete statement as to all the matters considered and referred to this committee, they did, however, express themselves unanimously on one or two vital matters, and I am hastening to report their findings and conclusions to you as far as they have gone.

First, the committee is unanimously of the opinion that the time has arrived when the city should create a park commission,

and to the largest degree possible, if not entirely, assume the responsibility and the administration of parks and drives in and about Madison.

Second, the committee respectfully urges the importance of the city's taking over the property tendered to it by the Madison Parks Foundation. The Monona Lake Frontage and area secured through the Foundation is most vital and important as a public park area to the city. This most important lake frontage probably could not have been obtained at all, or if at all, only at a greatly increased cost over that made possible by the farseeing, prompt, and loyal contributions of time and money of a very large number of public spirited citizens in Madison.

Third, if, as the city is assured, the taking over of the property of the Madison Parks Foundation and the payment for the same by the city will release to these same public spirited citizens a financial resource that can be made available and will assist in securing the very large area about Lake Wingra for an arboretum and wild life preserve, in cooperation with the regents of the university, it will multiply the public park area so greatly to be desired in our rapidly growing city.

(Signed by the Chairman.)

An ordinance was introduced early in the present year to create for Madison a park commission. The ordinance for creating a park commission provides that it shall, if adopted, take effect from and after January 1, 1929, and contemplates the taking over by such a park commission of the administration of parks within the city, and as soon as it can be brought about, the drives and park areas now held and administered by the Madison Park and Pleasure Drive Association outside the city limits. It is of the greatest importance that this Association should consider whether, upon the city's assuming the responsibility for the parks and drives now being administered through it, the Association should itself dissolve. The Madison Park and Pleasure Drive Association has rendered a significant service to the city of Madison during the thirty-six years of its activities. The Madison Parks Foundation is likewise rendering a wonderful service to the city in the matter of looking to the future and acquiring needed park lands. Will a city park commission take the place of either or both of these organizations, or is there a place in this community for a voluntary association or associations to continue to function in the interest of Madison's larger park needs? In other cities, as for instance, Grand



Barry Park—A Neighborhood Playground



Barry Park—Formerly Bog Hollow

Rapids, Michigan, a voluntary association continues its activities in behalf of an enlarged park program even after the park commission has been established to do the administrative park work for the city.

The City Council has by resolution authorized the purchase of the Monona Lake frontage held by the Madison Parks Foundation for public park purposes at a cost of more than one hundred thousand dollars (\$100,000).

Along with this action on the part of the Council, Mr. M. B. Olbrich, Secretary of the Madison Parks Foundation and regent of the University of Wisconsin, has taken definite steps to secure an arboretum of several hundred acres in extent about the shores of Lake Wingra. This will be brought about by the pledging of a substantial part of the sum paid to subscribers to the Madison Parks Foundation by the city, approximately eighty thousand dollars (\$80,000), and by securing an appropriation from the Board of Regents of a like amount. It is understood that to carry out the plan, further subscriptions of approximately forty thousand dollars (\$40,000) should be secured.

The park program for the past year has included, in addition to the usual maintenance and development of the already existing parks, some activities of outstanding significance.

Tree Ordinance

The Common Council placed with the Board of Directors of the Madison Park and Pleasure Drive Association the administration of the city tree ordinance. We have completed the first year under this ordinance. The Council provided for the complete equipment of the forestry department, and there has been the very finest cooperation on the part of all people concerned in thus caring for the street trees. Several streets have had the trees trimmed over their entire length. The actual cost of trimming the trees is certified to the city auditor, and bills are rendered. In most cases payment is made at once; where payment is not made the cost is carried into the tax roll. The work of this department for the first year has been largely experimental, but based upon the experience of the past year, it is clearly apparent that the work is well received and will be entirely self-sustaining.

City Parks

The City Forester has acted as assistant park superintendent and assisted in making designs for the replanting of city parks, particularly Brittingham Park. The original plantings in Brittingham Park have grown to such an extent that it is desirable, both from the standpoint of the beauty and usefulness of the park itself and in consideration of the property owners adjacent to the park, that many of the high trees should be entirely removed and a new planting substituted. The City Forester has made a design which has been accepted by the Board, and provision is included in the budget for 1928 to begin the replanting of the border trees and shrubbery in this park. Ground trimming of the trees and shrubbery in all the parks is done in the winter time under direction of the City Forester.

Municipal Golf Course

The administration of the Municipal Golf Course was placed under the jurisdiction of the Madison Park and Pleasure Drive Association during the past year. The course was opened June 11, 1927, and was used for 35,729 rounds of golf during the 1927 season, yielding a gross revenue of \$8,972.25. In this year of 1928 the season for playing was opened April 28 with players numbering 667 and receipts of \$169.25 for Saturday and Sunday, April 28 and 29, the opening days. The demand for this course this year has been so large that players have had to wait for more than two hours to get on the course after purchasing their tickets. The Municipal Golf Course is meeting with splendid success, and spells the need of increased municipal provisions for this popular sport.

Tourist Camp

The Olin Park Tourist Camp has justified the action of the board in making it a pay camp. The tourists visiting the camp express themselves as preferring to stop at a pay camp because of the accommodations and associations found at such camps. It is estimated that approximately fifteen thousand people used the camp during the past season, and the receipts at fifty cents per family per day yielded over two thousand dollars. The urgent desire of the board is that the receipts of the tourist camp be devoted to improvements in the camp, and one of the most

insistent requests on the part of tourists is that shower baths be provided. A new pump was installed in the camp the past season, and additional water for all purposes, including baths and lawn sprinkling, is much needed. The city water department gives assurance that the city water mains are to be extended to the camp in a short time. In view of these assurances there is reason for not providing extra machinery and piping to bring water from the lake.

Winter Sports

Winter sports have more and more come into favor and are demanding provision for their enjoyment. Skating rinks have been kept open in the Henry Vilas Park and Tenney Park lagoons, in Barry Park, on Lake Monona at South Madison, at Hudson Park, and opposite the Wirka landing. A winter sports committee was created by the Common Council, and the larger rinks were maintained the past winter in cooperation with this committee.

Outside Drives

The outside drives are in the best condition this year they have been for years. With a reasonable expenditure for oiling, Farwell Drive, that was rebuilt its entire length in 1926, has been well preserved. In cooperation with the Village of Shorewood Hills, the rustic bridge on Lake Mendota Drive was entirely rebuilt. The Hammersley Road, extending from Owen Parkway northerly to the Sauk Road, a distance of seven-eighths of a mile, was graded, gravelled, and over a short distance of the low portion, surfaced with concrete at a cost of fifty-nine hundred two dollars (\$5902).

The City Auditor reports moneys spent for park purposes during 1927 the sum of \$154,553.25, which with appropriations heretofore made, makes a total appropriated by the city for park purposes of \$1,316,869.87. General subscriptions for 1927 were \$4,036.00, which, together with voluntary subscriptions heretofore made for park work, amount to \$442,061.41.

Provision has been made by the City Council in its budget for 1928 for the sum of \$152,840.97 to be expended for park and recreational purposes. Voluntary subscriptions were invited

on the postal card plan as has been done for many years, and at the present time \$3,349.50 has been subscribed.

Whether this meeting proves to be the last annual meeting of the Madison Park and Pleasure Drive Association or not, it is most desirable that a published report be issued covering the work of the past two years, including detailed reports of receipts and disbursements of the Association and contributions to park work by the city and through the Madison Parks Foundation. The continuous record and history of the park movement in Madison will be lacking unless this is done. I think I cannot emphasize too earnestly the wish of the directors in this behalf.

Respectfully submitted,

ERNEST N. WARNER,
President.

The Annual Meeting
of the
**Madison Park and Pleasure Drive
Association**
Held May 8, 1929

The annual meeting of the Madison Park and Pleasure Drive Association was held in the auditorium of the City Library, May 8, 1929.

The meeting was called to order by Ernest N. Warner, President.

The report of the Treasurer was read and placed on file.

The report on behalf of the Board of Directors was made by President Ernest N. Warner.

On motion of John C. McKenna the following officers were elected for the ensuing year:

President—Ernest N. Warner

Vice-President—Frank W. Cantwell

Secretary—John L. Bourke

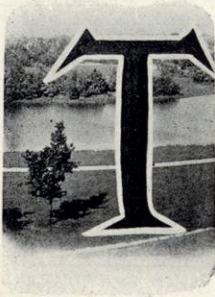
Treasurer—Frank W. Hoyt

Directors—Frank W. Hoyt, Herbert C. Schenk, Fred M. Schlimgen, Walter E. Sullivan.

On motion the meeting adjourned.

President's Report 1929

Made on Behalf of the Board of Directors of the
Madison Park and Pleasure Drive Association



To the Members of the Madison Park and Pleasure Drive Association:

This is the thirty-seventh anniversary meeting of the Madison Park and Pleasure Drive Association. Had the ordinance introduced in the Common Council more than a year ago providing for the creation of a park commission been passed and become effective as was contemplated, then this meeting would not be held. The provision of the ordinance to which I am referring fixed January 1, 1929, as the date for the taking over of the park work in and about Madison by the park commission. Explanations have been made by members of the city administration that large public matters had so fully engrossed the attention of the Common Council that it was not possible to give due attention last year to so important a matter as the creation of a park commission to take the place and undertake to do the work for Madison that has for more than one-third of a century been done by the Madison Park and Pleasure Drive Association.

In its budget provision made in 1928 for the year 1929, the usual appropriations were voted by the Common Council for the carrying on of the park work in Madison through the Madison Park and Pleasure Drive Association, and it is at the request of the Mayor that for the present this Association continues to function the same as it has been doing for many years past. Council appropriations for the park work for the current year include appropriations for the zoo \$27,378.90, for the general park work \$105,927.40, for outside drives \$1,000, total \$134,306.30. Receipts from park concessions are estimated at \$17,060.60, leaving the amount to be raised by taxation for parks and playgrounds \$117,245.70.

By comparison, the receipts and disbursements for parks and playgrounds within the city during the past year are stated by the city auditor at, expenditures \$140,766.84, of which there was earned through the various concessions and services rendered by the department \$24,372.72, leaving a net amount expended by this department in 1928 of \$116,394.12. Of these earnings the municipal golf course showed receipts of \$4,977 in excess of the estimate for the year, and in the care of street trees there was an earning of \$927.60 in excess of the estimate. With these excess earnings, when the park budget was balanced at the end of 1928, it showed an excess of revenues over expenditures of \$3,868.85.

There was received last year from private subscriptions and interest on invested funds for expenditure on drives outside the city, the sum of \$3,964.20, and an appropriation by the city of \$3,000.00. This, with the balance on hand at the beginning of the year, showed total receipts of \$7,239.63. Disbursements from these funds amounted to \$6,762.64, leaving a balance in the subscription account on January 1, 1929, of \$476.99.

The subscriptions up to this time for the current year with interest received on invested funds amount to \$3,051.37. The city appropriation for work on the drives is for the year 1929 \$1,000. This means that no large permanent improvement on outside drives can be made without substantial additional subscriptions for the specific work undertaken. The subscription account with the small appropriation by the city will only permit of the barest upkeep for the coming season on the outside drives.

In addition to the usual maintenance and upkeep of the existing zoo and park areas, there has been accomplished much significant park improvement during the past year.

Wingra Creek has been dredged its entire length, and beginnings have been made towards opening up and making available to the public the border areas owned by the city and dedicated to public use. Property owners along the banks of Wingra Creek are anxious to cooperate in the development of the banks along the water's edge.

Two public areas, one at the easterly limits of the city and one at the westerly limits of the city, have been improved and opened up to public use during the past year. The area lying

between East Washington Avenue and the Chicago, Milwaukee and St. Paul tracks, remembered as dumping grounds for many years, was last year cleared, graded, and is now being top dressed and seeded, and by common understanding of city officials is to become known and be dedicated as Burr Jones Field. The city property at this location consisted of eight acres of unkept, neglected marsh ground with irregular filling, and largely through the efforts and cooperation of the East Side Business Men's Association giving freely of their time and labor, about one-half of this area has now been leveled, improved, and parked. Much is left to be done to make available for park purposes the entire area. The City Council has appropriated \$2,000 toward this development, a part of which has already been expended, and the balance of which will be expended by our park superintendent during the present year, in cooperation with the East Side Business Men's Association, to carry this development as far as the money will go.

Other east end improvements should be mentioned in this connection. The park area lying between Thornton Avenue and the Yahara River and extending from Williamson Street bridge to the Rutland Street bridge was the past year filled, graded, and seeded, making a fine additional park frontage along the borders of the Yahara River.

A boathouse which accommodates forty-eight boats, was last year constructed on the north bank of the Yahara about opposite Dayton Street at a cost of \$6,000. This boathouse has long been wanted by boat owners along the Yahara, and its erection has done much to remove the unsightly, short piers and beached-boat uses of the banks of the Yahara.

The area lying between Spaight Street and Lake Monona, once known as Monona Park, later as Spaight Street Park, and named by the council B. B. Clarke Park, has been in the process of building for many years but never has taken shape as a park. The contract has been let for the grading, shaping and development of this area for this present season in accordance with the Simonds plan made many years ago. The delay in the improvement has largely awaited the necessary filling.

The significant improvement at the westerly limits of the city should be mentioned. The city for many years has owned



Old Quarry Entrance to Owen Park



Owen Park Playfield

twenty-four acres known as the old quarry property, a beautiful wooded area adjacent to Owen Park and Parkway. Only the occasional nature lover has found this place, pitched his camp, built his fire, and enjoyed outings in this marvelous area of natural beauty. Last year the city council by resolution authorized the Madison Park and Pleasure Drive Association to clear the area of dead and down timber. During the fall and winter months this work has progressed until now some two-thirds of this twenty-four acres has been opened up and made inviting for use as park area. Through plans of the park superintendent this work has been accomplished substantially without cost to the city by marking the trees to be cut and letting those do the cutting who would do it for the wood. This has proved helpful to those who are seeking winter fuel and a matter of economical development of this park area by the city.

Last year marked the completion of the parking of East Washington Avenue Boulevard extending from the Capitol easterly nearly two miles. Early in the history of this Association plans were formulated for the improvement and boulevarding of this avenue, and for many years thereafter it was occupied by the rails and ties of a proposed interurban railway which never materialized. The first successful effort to secure the parking of this boulevard was accomplished with the cooperation of Mr. William Ryan, City Attorney, through whose efforts the rails and ties of the proposed interurban were finally removed. The council appropriated money for the repair of the broken curbing and for the filling, grading, planting and seeding of the six blocks near the capitol. Annual appropriations of approximately \$2,000 per year have been made by the Common Council to carry on this work. The Board of Directors of the Association engaged Prof. Franz A. Aust of the Department of Landscape Design at the University of Wisconsin to advise the board and assist in the planting design. This most beautiful approach to Madison and its capitol should be credited in large measure to the persistent efforts of the park superintendent and the cooperation of Prof. Aust.

Plans for two bridges, substantial in form and artistic in design, have been submitted for Tenney Park, the one to be known as the Tenney Bridge, extending from the Island near its

easterly end to the mainland; the other, the gift of Judge A. G. Zimmerman, to span the lagoon from Sherman Avenue to the Island. One or both of these bridges should be built during the present season. The location of the bridges has been determined by Mr. Simonds, with whom the board has conferred as landscape advisor since the beginning of its park work in and about Madison. Their design follows his suggestion.

One cannot conclude a report on last year's work of the Madison Park and Pleasure Drive Association without making one or two personal references. The popularity of the zoo has often been mentioned. The interest in the zoo is testified to by the great number of people who visit it from throughout the state and from the city, and the appreciation manifested by many who contribute of their time and their means to its development. Complete plans for the proposed primate house have been prepared, the contributions necessary have almost entirely been provided for, and there is every reason to expect that it will be erected during the present season. In addition to all the other wonderful services to the city and to the zoo by Dr. Corydon G. Dwight, the completion of this primate house will ever stand as a final monument to his persevering efforts in behalf of the zoo. The board has been fortunate in the continued and loyal support of Fred Winkelman, zoo director. He has held his position continuously since the organization of the zoo.

The forestry department, placed under the jurisdiction of the Board of Directors of the Madison Park and Pleasure Drive Association, has been directed since its establishment by James G. Marshall as city forester. It was a new department and had to be organized from the ground up the first year. From the purchase of equipment on through the assembling of a crew, the determination of where the work should commence in the city, the education of the public to the work of the department, and the determination of charges for the work have all been matters of development. It is but natural that the taking over of jurisdiction of the street trees that lot owners had planted and interested themselves in, should meet with some friction; that the costs of the service should invite debate and perhaps differences. With only two full years of operation, there seems to be a practically universal acceptance of the program of this department,

and the constant calls upon the city forester are today rather for services than complaints. In the working out of this far-
visioned and wise care of the city's most beautiful asset, its trees,
real wisdom has been shown by the Common Council, and large
credit is due Mr. Marshall.

The Municipal Golf Course, under the jurisdiction of the
Madison Park and Pleasure Drive Association, was opened
April 28, 1928, for the second season. 51,864 rounds of golf were
played during the season by residents of Madison, students at
the University, and tourists from all parts of the United States.
The receipts of \$12,966 exceeded by \$5,607.45 the entire cost of
maintenance and operation for the entire year. Changes are
planned which will improve the course from the players' stand-
point and speed up play by relieving congestion at certain points.
The overcrowded conditions at the Municipal Golf Course con-
stitute sufficient evidence to prove the value of such utilization
of public lands and gives but slight indication of the present
popularity of the game since many are either turned away or
discouraged by the congestion.

Respectfully submitted,

ERNEST N. WARNER,

President.

Appendix

*Officers and Members of the Board of Directors of the Madison Park and Pleasure Drive Association Since Its Organization**

<p style="text-align: center;">1894</p> <p>President John M. Olin Vice-Pres. John Hess Secretary Charles N. Brown Treasurer Frank W. Hoyt Directors—C. F. Cooley, Frank G. Brown, Julius Zehnter.</p>	<p>Wootton, F. G. Brown, C. F. Cooley, W. F. McConnell.</p>
<p style="text-align: center;">1895</p> <p>President John M. Olin Vice-Pres. John Hess Secretary Charles N. Brown Treasurer Frank W. Hoyt Directors—C. F. Cooley, Frank G. Brown, Julius Zehnter.</p>	<p style="text-align: center;">1900</p> <p>President John M. Olin Vice-Pres. A. R. Kentzler, Jr. Secretary Charles N. Brown Treasurer Frank W. Hoyt Directors—L. S. Hanks, F. Wootton, W. S. Main, Carl J. Hausmann, Daniel K. Tenney.</p>
<p style="text-align: center;">1896</p> <p>President John M. Olin Vice-Pres. Frank S. Warren Secretary Charles N. Brown Treasurer Frank W. Hoyt Directors—C. F. Cooley, Frank G. Brown, L. S. Hanks, Frank M. Wootton.</p>	<p style="text-align: center;">1901</p> <p>President John M. Olin Vice-Pres. Andrew S. Brown Secretary Charles N. Brown Treasurer Frank W. Hoyt Directors—L. S. Hanks, F. M. Wootton, W. S. Main, Carl J. Hausmann, Daniel K. Tenney.</p>
<p style="text-align: center;">1897</p> <p>President John M. Olin Vice-Pres. Frank S. Warren Secretary Charles N. Brown Treasurer Frank W. Hoyt Directors—C. F. Cooley, Frank G. Brown, L. S. Hanks, Frank M. Wootton.</p>	<p style="text-align: center;">1902</p> <p>President John M. Olin Vice-Pres. Andrew S. Brown Secretary Charles N. Brown Treasurer Frank W. Hoyt Directors—W. S. Main, D. K. Tenney, C. J. Hausmann, R. C. Vernon, Halle Steensland.</p>
<p style="text-align: center;">1898</p> <p>President John M. Olin Vice-Pres. Frank S. Warren Secretary Charles N. Brown Treasurer Frank W. Hoyt Directors—C. F. Cooley, Frank G. Brown, L. S. Hanks, Frank M. Wootton.</p>	<p style="text-align: center;">1903</p> <p>President John M. Olin Vice-Pres. Andrew S. Brown Secretary Charles N. Brown Treasurer Frank W. Hoyt Directors—Carl J. Hausmann, Wm. R. Bagley, Halle Steensland, Magnus Swenson, Arthur O. Fox.</p>
<p style="text-align: center;">1899</p> <p>President John M. Olin Vice-Pres. A. R. Kentzler, Jr. Secretary Charles N. Brown Treasurer Frank W. Hoyt Directors—L. S. Hanks, F. M.</p>	<p style="text-align: center;">1904</p> <p>President John M. Olin Vice-Pres. Andrew S. Brown Secretary Charles N. Brown Treasurer Frank W. Hoyt Directors—Carl J. Hausmann, Wm. R. Bagley, Halle Steensland, Magnus Swenson, Arthur O. Fox.</p>

*From January, 1897, until July 10, 1894, a citizen's committee consisting of John M. Olin, Chairman, Prof. C. S. Slichter, Carl Hausmann, John L. Erdahl, L. S. Hanks, C. F. Cooley, M. R. Doyon, J. A. Aylward, M. S. Klauber, H. J. Veerhusen, A. L. Sanborn, secured subscriptions, and disbursed moneys for the construction of the Bay Road and the Rustic Bridge. Mr. J. J. Suhr, now deceased, acted as treasurer of the committee.

	1905	Schlimgen, F. W. Cantwell, F. W. Hoyt, G. M. Fisk.
President . . .	John M. Olin	
Vice-Pres. . .	Andrew S. Brown	
Secretary . . .	Charles N. Brown	
Treasurer . . .	Frank W. Hoyt	
Directors—	Carl J. Hausmann, Wm. R. Bagley, Halle Steensland, Magnus Swenson, Arthur O. Fox.	
	1906	
President . . .	John M. Olin	
Vice-Pres. . .	Andrew S. Brown	
Secretary . . .	Charles N. Brown	
Treasurer . . .	Frank W. Hoyt	
Directors—	Wm. R. Bagley, C. J. Hausmann, J. M. Naughtin, Halle Steensland, Magnus Swenson,* W. D. Curtis.†	
	1907	
President . . .	John M. Olin	
Vice-Pres. . .	Andrew S. Brown	
Secretary . . .	Charles N. Brown	
Treasurer . . .	Frank W. Hoyt	
Directors—	Mayor J. C. Schubert and Ald. John C. Prien, ex-officio, Wm. R. Bagley, Wm. D. Curtis, John M. Naughtin, Fred M. Schlimgen, Halle Steensland.	
	1908	
President . . .	John M. Olin	
Vice-Pres. . .	Andrew S. Brown	
Secretary . . .	Charles N. Brown	
Treasurer . . .	Frank W. Hoyt	
Directors—	Mayor J. C. Schubert and Ald. John C. Prien, ex-officio, Wm. R. Bagley, Wm. D. Curtis, John M. Naughtin, Fred M. Schlimgen, Halle Steensland.	
	1909	
President . . .	John M. Olin	
Vice-Pres. . .	Andrew S. Brown	
Secretary . . .	Charles N. Brown	
Treasurer . . .	Frank W. Hoyt	
Directors—	Mayor J. C. Schubert and Ald. C. W. Constantine, ex-officio, Wm. R. Bagley, John M. Naughtin, Fred M. Schlimgen, Halle Steensland., W. D. Curtis.	
	1910	
President . . .	J. C. Schubert	
Vice-Pres. . .	Andrew S. Brown	
Secretary . . .	Charles N. Brown	
Treasurer . . .	Frank W. Hoyt	
Directors—	Ald. Geo. Smith, ex-officio, W. D. Curtis, Fred M.	
	1911	
President . . .	J. C. Schubert	
Vice-Pres. . .	Andrew S. Brown	
Secretary . . .	Charles N. Brown	
Treasurer . . .	Frank W. Hoyt	
Directors—	Ald. Geo. Smith, ex-officio, F. W. Cantwell, W. D. Curtis, Frank W. Hoyt, Fred M. Schlimgen, Ernest N. Warner.	
	1912	
President . . .	Ernest N. Warner	
Vice-Pres. . .	Charles N. Brown	
Secretary . . .	E. J. B. Schubring	
Treasurer . . .	Frank W. Hoyt	
Directors—	Mayor J. B. Heim, and Ald. Milo Kittleson, ex-officio, John L. Bourke, Ben F. Mautz, Fred M. Schlimgen, F. W. Cantwell, Frank W. Hoyt.	
	1913	
President . . .	Ernest N. Warner	
Vice-Pres. . .	Charles N. Brown	
Secretary . . .	Eugene C. Smith	
Treasurer . . .	Frank W. Hoyt	
Directors—	Mayor J. B. Heim and Ald. Arthur O. Utter, ex-officio, John L. Bourke, Ben F. Mautz, Fred M. Schlimgen, John C. Prien, Frank W. Hoyt.	
	1914	
President . . .	Ernest N. Warner	
Vice-Pres. . .	Charles N. Brown	
Secretary . . .	Eugene C. Smith	
Treasurer . . .	Frank W. Hoyt	
Directors—	Mayor A. H. Kayser, and Ald. Arthur O. Utter, ex-officio, John L. Bourke, Ben F. Mautz, Fred M. Schlimgen, John C. Prien, Frank W. Hoyt.	
	1915	
President . . .	Ernest N. Warner	
Vice-Pres. . .	Charles N. Brown	
Secretary . . .	Eugene C. Smith	
Treasurer . . .	Frank W. Hoyt	
Directors—	Mayor A. H. Kayser and Ald. Arthur O. Utter, ex-officio, John L. Bourke, Ben F. Mautz, Fred M. Schlimgen, John C. Prien, Frank W. Hoyt.	

* Resigned May 19, 1906

† Succeeded Magnus Swenson

1916

President . . . Ernest N. Warner
 Vice-Pres. . . Charles N. Brown
 Secretary . . . John L. Bourke
 Treasurer . . . Frank W. Hoyt

Directors—Mayor George C. Sayle
 and Ald. Arthur O. Utter, ex-
 officio, Corydon G. Dwight, John C.
 Prien, Edward J. Reynolds, Fred M.
 Schlimgen, Frank W. Hoyt.

1917

President . . . Ernest N. Warner
 Vice-Pres. . . Charles N. Brown
 Secretary . . . John L. Bourke
 Treasurer . . . Frank W. Hoyt

Directors—Mayor George C. Sayle
 and Ald. Arthur O. Utter, ex-
 officio, Corydon G. Dwight, John C.
 Prien, Edward J. Reynolds, Fred M.
 Schlimgen, Frank W. Hoyt.

1918

President . . . Ernest N. Warner
 Vice-Pres. . . Charles N. Brown
 Secretary . . . John L. Bourke
 Treasurer . . . Frank W. Hoyt

Directors—Mayor George C. Sayle
 and Ald. Thomas Quinn, ex-officio,
 Corydon G. Dwight, John C. Prien,
 Edward J. Reynolds, Fred M.
 Schlimgen, Frank W. Hoyt.

1919

President . . . Ernest N. Warner
 Vice-Pres. . . Charles N. Brown
 Secretary . . . John L. Bourke
 Treasurer . . . Frank W. Hoyt

Directors—Mayor George C. Sayle
 and Ald. Thomas Quinn, ex-officio,
 Corydon G. Dwight, John C. Prien,
 Edward J. Reynolds, Fred M.
 Schlimgen, Frank W. Hoyt.

1920

President . . . Ernest N. Warner
 Vice-Pres. . . Charles N. Brown
 Secretary . . . John L. Bourke
 Treasurer . . . Frank W. Hoyt

Directors—Mayor I. M. Kittleson
 and Ald. Thomas W. Quinn, ex-
 officio, Corydon G. Dwight, Arthur
 X. Merz, John C. Prien, Fred M.
 Schlimgen, Frank W. Hoyt.

1921

President . . . Ernest N. Warner
 Vice-Pres. . . Charles N. Brown
 Secretary . . . John L. Bourke
 Treasurer . . . Frank W. Hoyt

Directors—Mayor I. M. Kittleson

and Ald. Thomas W. Quinn, ex-
 officio, Corydon G. Dwight, Arthur
 X. Merz, Fred M. Schlimgen, John
 Stock, Jr., Frank W. Hoyt.

1922

President . . . Ernest N. Warner
 Vice-Pres. . . Charles N. Brown
 Secretary . . . John L. Bourke
 Treasurer . . . Frank W. Hoyt

Directors—Mayor I. M. Kittleson
 and Ald. Thomas W. Quinn, ex-
 officio, Corydon G. Dwight, Herbert
 C. Schenk, Fred M. Schlimgen,
 John Stock, Jr., Frank W. Hoyt.

1923

President . . . Ernest N. Warner
 Vice-Pres. . . Charles N. Brown
 Secretary . . . John L. Bourke
 Treasurer . . . Frank W. Hoyt

Directors—Mayor I. M. Kittleson
 and Ald. Thomas W. Quinn, ex-
 officio, Corydon G. Dwight, Herbert
 C. Schenk, Fred M. Schlimgen,
 Dennis Sullivan, Frank W. Hoyt.

1924

President . . . Ernest N. Warner
 Vice-Pres. . . Charles N. Brown
 Secretary . . . John L. Bourke
 Treasurer . . . Frank W. Hoyt

Directors—Mayor I. M. Kittleson
 and Ald. Thomas W. Quinn, ex-
 officio, Corydon G. Dwight, Herbert
 C. Schenk, Fred M. Schlimgen,
 Dennis Sullivan, Frank W. Hoyt.

1925

President . . . Ernest N. Warner
 Vice-Pres. . . Charles N. Brown
 Secretary . . . John L. Bourke
 Treasurer . . . Frank W. Hoyt

Directors—Mayor I. M. Kittleson
 and Ald. Walter Plaenert, ex-
 officio, Corydon G. Dwight, Herbert
 C. Schenk, Fred M. Schlimgen, D.
 C. Sullivan, Frank W. Hoyt.

1926

President . . . Ernest N. Warner
 Vice-Pres. . . Frank W. Cantwell
 Secretary . . . John L. Bourke
 Treasurer . . . Frank W. Hoyt

Directors—Mayor A. G. Schmede-
 man and Ald. Walter Plaenert, ex-
 officio, Corydon G. Dwight, Herbert
 C. Schenk, Fred M. Schlimgen, D.
 C. Sullivan, Frank W. Hoyt.

1927

President . . . Ernest N. Warner
 Vice-Pres. . . Frank W. Cantwell
 Secretary . . . John L. Bourke
 Treasurer . . . Frank W. Hoyt

Directors—Mayor A. G. Schmedeman and Ald. Walter R. Kruger, ex-officio, Corydon G. Dwight, Herbert C. Schenk, Fred M. Schlingen, D. C. Sullivan, Frank W. Hoyt.

1928

President . . . Ernest N. Warner
 Vice-Pres. . . Frank W. Cantwell
 Secretary . . . John L. Bourke
 Treasurer . . . Frank W. Hoyt

Directors—Mayor A. G. Schmede-

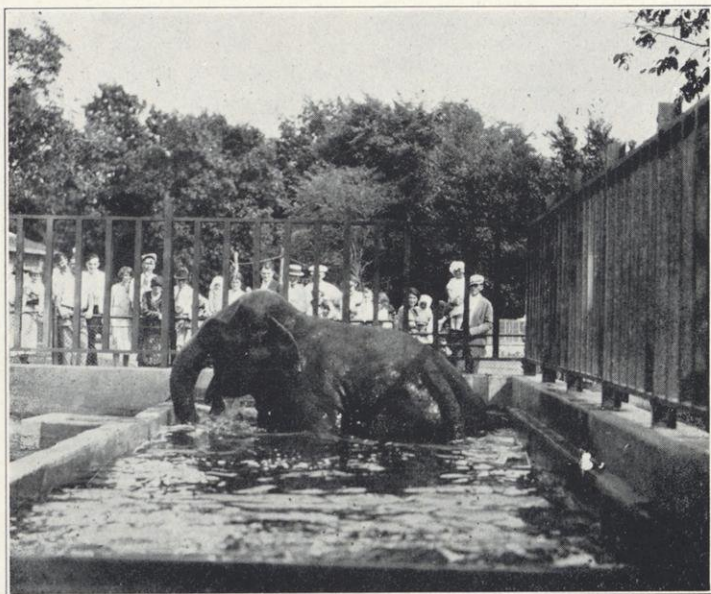
man and Ald. Walter R. Kruger, ex-officio, Corydon G. Dwight, Herbert C. Schenk, Fred M. Schlingen, D. C. Sullivan, Frank W. Hoyt.

1929

President . . . Ernest N. Warner
 Vice-Pres. . . Frank W. Cantwell
 Secretary . . . John L. Bourke
 Treasurer . . . Frank W. Hoyt

Directors—Mayor A. G. Schmedeman and Ald. Walter R. Kruger, ex-officio, Herbert C. Schenk, Fred M. Schlingen, Walter E. Sullivan, Frank W. Hoyt, Richard H. Marshall.*

*Elected August, 1929



Annie in Her Bath—Vilas Park Zoo

Private Contributions, Receipts Since Organization

For the years 1892 and 1893.....		\$6,888.86
Amount contributed by Prof. Owen in 1892, in addition to above.....		3,000.00
For the year 1894.....		655.00
For the year 1895.....		995.00
For the year 1896.....		1,580.00
For the year 1897.....		10,160.23
For the year 1898.....		2,171.32
For the year 1899, excluding gifts for Tenney Park.....	\$3,231.50	
Gifts for Tenney Park, exclusive of the \$1,500 appropriated by the city.....	5,778.00	
		<u>\$9,009.50</u>
For the year 1900.....		5,313.20
For the year 1901.....		5,286.00
For the year 1902.....		5,409.00
For the year 1903, for the general work of the Association.....	\$5,036.75	
For the year 1903, for the Yahara River improvement.....	20,621.24	
		<u>\$25,657.99</u>
For the year 1904, for the general work of the Association.....	\$5,665.50	
For the year 1904, for the Yahara River improvement.....	4,658.50	
		<u>\$10,324.00</u>
For the year 1904, gift of Mr. and Mrs. Wm. F. Vilas for the purchase of Henry Vilas Park.....		18,000.00
For the year 1904, special subscription for improving Henry Vilas Park.....		10,171.00
For the year 1904, special subscription for improving Monona Lake Park.....		1,100.00
Amount contributed by D. K. Tenney for constructing foot bridge in Tenney Park.....		368.00
Amount contributed by Julius Zehnter for same purpose....		50.00
Amount contributed for all purposes for the year 1905, as follows:		
For general work of the association.....	\$5,663.25	
For the extra work of the Association.....	5,338.00	
For securing the addition to Tenney Park....	5,600.00	
For improving Henry Vilas Park, contributed by Wm. F. Vilas.....	10,000.00	
For improving Brittingham Park, contributed by T. E. Brittingham.....	8,000.00	
		<u>\$34,601.25</u>
Amount contributed for all purposes for the year 1906, as follows:		
For the general work of the Association.....	\$7,841.08	
For improving Henry Vilas Park, contributed by William F. Vilas.....	5,000.00	
For improving triangle, contributed by T. E. Brittingham.....	4,000.00	
Legacy of Mary C. Stewart for constructing drinking fountain.....	2,000.00	
		<u>\$18,841.08</u>

Amount contributed for 1915:		
Subscriptions.....	\$2,518.50	
Dividends and interest.....	265.87	
	<hr/>	\$2,784.37
Amount contributed for 1916:		
Subscriptions.....	\$2,562.00	
Dividends and interest.....	533.95	
Through Madison Zoological and Aquarium Society, Mrs. Anna M. Vilas, bird house and aquarium.....	6,900.00	
	<hr/>	\$9,995.95
Amount contributed for 1917:		
Subscriptions.....	\$2,664.45	
Dividends and interest.....	372.50	
Through Madison Zoological and Aquarium Society, Dr. Charles H. Vilas, lion house....	15,500.00	
	<hr/>	\$18,536.95
Amount contributed for 1918:		
Subscriptions.....	\$2,274.50	
Dividends and interest.....	384.11	
D. K. Tenney bequest (annually).....	500.00	
	<hr/>	\$3,158.61
Amount contributed for 1919:		
Subscriptions.....	\$2,352.00	
Dividends and interest.....	423.00	
Daniel K. Tenney bequest.....	500.00	
Contributions for special work in Henry Vilas Park, 1918-1919.....	10,000.00	
	<hr/>	\$13,275.00
Amount contributed for 1920:		
Subscriptions.....	\$3,270.00	
Daniel K. Tenney bequest.....	500.00	
Dividends and interest.....	388.27	
	<hr/>	\$4,158.27
Amount contributed for 1921, as follows:		
Subscriptions.....	\$3,163.25	
Daniel K. Tenney bequest.....	500.00	
Contributions for zoo.....	2,187.48	
Dividends and interest.....	384.99	
Subscriptions for 1920.....	52.00	
Subscriptions toward purchase of Olbrich hold- ing for park.....	17,350.00	
Subscriptions for purchase of athletic field....	7,500.00	
	<hr/>	\$31,137.72
Amount contributed for 1922, as follows:		
Subscriptions.....	\$3,892.50	
Daniel K. Tenney bequest.....	500.00	
Contributions for zoo.....	1,971.37	
Dividends and interest.....	428.78	
Subscriptions for 1921.....	10.00	
Burrows Park subscriptions.....	152.00	
	<hr/>	\$6,954.65
Amount contributed for 1923, as follows:		
Subscriptions.....	\$4,105.00	
Daniel K. Tenney bequest.....	500.00	
Contributions for zoo.....	\$1,182.12	
Dividends and interest.....	498.11	
Special subscriptions Farwell Drive (Maple Bluff).....	4,095.32	
	<hr/>	\$10,380.55

Amount contributed for 1915:		
Subscriptions.....	\$2,518.50	
Dividends and interest.....	265.87	
	<hr/>	\$2,784.37
Amount contributed for 1916:		
Subscriptions.....	\$2,562.00	
Dividends and interest.....	533.95	
Through Madison Zoological and Aquarium Society, Mrs. Anna M. Vilas, bird house and aquarium.....	6,900.00	
	<hr/>	\$9,995.95
Amount contributed for 1917:		
Subscriptions.....	\$2,664.45	
Dividends and interest.....	372.50	
Through Madison Zoological and Aquarium Society, Dr. Charles H. Vilas, lion house....	15,500.00	
	<hr/>	\$18,536.95
Amount contributed for 1918:		
Subscriptions.....	\$2,274.50	
Dividends and interest.....	384.11	
D. K. Tenney bequest (annually).....	500.00	
	<hr/>	\$3,158.61
Amount contributed for 1919:		
Subscriptions.....	\$2,352.00	
Dividends and interest.....	423.00	
Daniel K. Tenney bequest.....	500.00	
Contributions for special work in Henry Vilas Park, 1918-1919.....	10,000.00	
	<hr/>	\$13,275.00
Amount contributed for 1920:		
Subscriptions.....	\$3,270.00	
Daniel K. Tenney bequest.....	500.00	
Dividends and interest.....	388.27	
	<hr/>	\$4,158.27
Amount contributed for 1921, as follows:		
Subscriptions.....	\$3,163.25	
Daniel K. Tenney bequest.....	500.00	
Contributions for zoo.....	2,187.48	
Dividends and interest.....	384.99	
Subscriptions for 1920.....	52.00	
Subscriptions toward purchase of Olbrich hold- ing for park.....	17,350.00	
Subscriptions for purchase of athletic field....	7,500.00	
	<hr/>	\$31,137.72
Amount contributed for 1922, as follows:		
Subscriptions.....	\$3,892.50	
Daniel K. Tenney bequest.....	500.00	
Contributions for zoo.....	1,971.37	
Dividends and interest.....	428.78	
Subscriptions for 1921.....	10.00	
Burrows Park subscriptions.....	152.00	
	<hr/>	\$6,954.65
Amount contributed for 1923, as follows:		
Subscriptions.....	\$4,105.00	
Daniel K. Tenney bequest.....	500.00	
Contributions for zoo.....	\$1,182.12	
Dividends and interest.....	498.11	
Special subscriptions Farwell Drive (Maple Bluff).....	4,095.32	
	<hr/>	\$10,380.55

Amount contributed for 1924, as follows:

Subscriptions.....	\$4,048.50	
Daniel K. Tenney bequest.....	500.00	
Dividends and interest.....	474.30	
Special subscriptions, Lake Mendota Drive... ..	4,392.80	
Subscriptions for 1923.....	10.00	
Subscriptions for 1922.....	5.00	
	<hr/>	\$9,430.60

Amount contributed for 1925, as follows:

Subscriptions.....	\$4,692.90	
Daniel K. Tenney bequest.....	500.00	
Dividends and interest.....	461.69	
Special subscriptions, Lake Mendota Drive... ..	2,680.00	
Special subscriptions, Stewart Memorial Foun- tain.....	3,590.96	
Subscriptions for 1924.....	10.00	
Special subscription, L. M. Hanks for skating rink expense.....	74.96	
	<hr/>	\$12,010.51

Amount contributed for 1926, as follows:

Subscriptions.....	\$4,359.90	
Daniel K. Tenney bequest.....	500.00	
Special subscriptions, Farwell Drive.....	2,660.00	
Dividends and interest.....	487.32	
Subscriptions for 1925.....	28.62	
	<hr/>	\$8,035.84

Amount contributed for 1927, as follows:

Subscriptions.....	\$4,036.00	
Special subscriptions, Farwell Drive.....	15.00	
Dividends and interest.....	501.96	
	<hr/>	\$4,552.96

Amount contributed for 1928, as follows:

Subscriptions.....	\$3,411.00	
Special subscriptions, Farwell Drive.....	25.00	
Dividends and interest.....	491.20	
Subscriptions for 1927.....	37.00	
	<hr/>	\$3,963.20

Grand Total to Date.....	<hr/>	\$437,389.52
--------------------------	-------	--------------

Appropriations by the City of Madison

For land for which no bonds were issued.....	\$8,000.00
For improving streets fronting on parks:	
Main Street.....	\$1,875.00
Washington Avenue.....	1,500.00
Drake Street.....	1,935.00
Johnson Street.....	2,500.00
Brittingham Park.....	2,326.00
Brittingham Place.....	1,675.00
Marston Avenue.....	2,965.00
Sherman Avenue.....	2,517.00
	\$17,293.00
For streets within parks:	
Burr Oak Drive, Henry Vilas Park.....	\$2,900.00
Bay View Drive, Brittingham Park.....	7,153.00
Bay View Drive, Brittingham Park.....	4,900.00
	\$14,953.00
For storm sewer extending through parks.....	3,266.00
For boathouse, Brittingham Park.....	5,000.00
	\$48,512.00
Total for permanent improvements.....	
In addition to this the city has paid out since 1902 for park maintenance including principal and interest on bonds issued.....	\$112,808.00
General maintenance, 1912.....	16,000.00
Filling at Brittingham Park.....	214.50
Taxes on streets abutting park property.....	4,269.75
Improving Henry Vilas Park Addition.....	5,000.00
Tenney Park Bathhouse.....	5,400.00
Filling Burrows Park.....	1,800.00
Reported by city auditor for park purposes for the year 1913	32,086.85
Reported by city auditor for park purposes for the year 1914	45,512.14
Reported by city auditor for park purposes for the year 1915	54,756.30
Reported by city auditor for park purposes for the year 1916	51,608.27
Reported by city auditor for park purposes for the year 1917	48,276.74
Reported by city auditor for park purposes for the year 1918	55,331.13
Reported by city auditor for park purposes for the year 1919	49,019.19
Reported by city auditor for park purposes for the year 1920	63,265.23
Reported by city auditor for park purposes for the year 1921	56,709.29
Bond issue by city for Olbrich purchase.....	40,000.00
Reported by city auditor for park purposes for the year 1922	63,840.00
Reported by city auditor for park purposes for the year 1923	77,465.93
Reported by city auditor for park purposes for the year 1924	86,587.66
Reported by city auditor for park purposes for the year 1925	87,847.90
Reported by city auditor for park purposes for the year 1926	114,041.29
Barry Park purchase.....	18,500.00
Franklin Street Park (City Boat House) purchase.....	19,000.00
Charles F. Lamb lot, Spaight Street Park.....	1,750.00
Madison Parks Foundation tax remittance.....	2,714.45
Reported by city auditor for park purposes for the year 1927	134,102.44
Reported by city auditor for park purposes for the year 1928	116,394.12
Madison Parks Foundation purchase.....	102,185.45
	\$1,514,998.63
Making a total of.....	



Owen Park—Picnic Grove

Treasurer's Report

To the Members of the Madison Park and Pleasure Drive Association:

GENTLEMEN:

The following is a condensed statement of the financial transactions for the year ending December 31, 1927.

Receipts

Balance in Bank, November 15, 1926.....	\$ 1,983.62
1925 Subscriptions.....	10.62
1927 Subscriptions.....	4,036.00
Farwell Drive Subscriptions.....	15.00
Interest.....	526.71
Spraying Fund Receipts.....	119.40
Tree Trimming Receipts.....	37.50
Tourist Camp Receipts.....	2,089.50
Rent from City Boathouse Property.....	183.75
Work by Park Men.....	79.13
Appropriation by City of Madison.....	3,000.00
Henry Vilas Park Canoe Livery.....	60.00
	<hr/>
	\$12,141.23

Disbursements

Miscellaneous.....	\$ 2,195.61
Lake Mendota Drive.....	1,358.77
Farwell Drive.....	1,425.45
Owen Parkway Drive.....	3,809.95
Work by Park Men.....	79.13
Spraying Fund Expense.....	230.86
Tourist Camp Expense.....	195.86
Tree Trimming Expense.....	8.50
City Boathouse Expense.....	30.00
Henry Vilas Park Canoe Livery Expense.....	205.45
City of Madison for Miscellaneous Accounts.....	2,326.22
Balance in Bank, January 1, 1928.....	275.43
	<hr/>
	\$12,141.23
	<hr/>
January 1, 1928, by balance.....	\$275.43

Mr. and Mrs. A. H. Hollister Park Fund

Statement from November 15, 1926, to January 1, 1928

1926			
Nov.	15	By Balance from last report	\$17,794.72
	18	By Geo. L. Ledwith, interest to Nov. 17, 1926	\$ 49.50
1927			
Jan.	18	By Russell S. Corona, interest to Jan. 19, 1927	15.00
Feb.	21	By John M. Melaas, interest to Feb. 23, 1927	27.50
Mar.	4	By John H. Lee, interest to Mar. 5, 1927	15.00
	8	By Aaron L. Parman, interest to Mar. 10, 1927	87.00
	14	By John O'Connell, interest to Mar. 12, 1927	19.25
	21	By Frank Le Wohl, interest to Mar. 22, 1927	12.00
	23	By Joseph Hornung, interest to Mar. 22, 1927	137.50
	23	By First National Bank, interest on cer- tificates	3.85
Apr.	7	By C. H. Osthoff, interest in full	16.00
May	4	By Robert O'Malley, interest to May 4, 1927	110.00
	18	By Geo. L. Ledwith, interest to May 17, 1927	40.09
June	7	By Levi P. Palmer, interest to June 6, 1927	13.22
	29	By John O'Connell, interest in full	12.48
July	30	By Russell Corona, interest to July 10, 1927	15.00
Aug.	24	By John M. Melaas, interest to Aug. 23, 1927	27.50
Sept.	3	By John H. Lee, interest to Sept. 5, 1927	28.50
	10	By Aaron L. Parman, interest to Sept. 10, 1927	87.00
	21	By Frank Le Wohl, interest in full	12.00
	23	By Joseph Hornung, interest to Sept. 22, 1927	137.50
	29	By Carrie S. Pierce, interest to Oct. 1, 1927	13.75
Nov.	2	By Robt. C. O'Malley, interest in full	110.00
	2	By First National Bank, interest on cer- tificates	2.29
	3	Northwestern Securities Company, in- terest on certificates	7.24
	19	By Geo. L. Ledwith, interest to Nov. 17, 1927	38.50
Dec.	8	By Levi P. Palmer, interest to Dec. 6, 1927	13.75
			1,051.42
			\$18,846.14
To one-half of income \$1,051.42 paid Madison Park and Pleasure Drive As- sociation used on drives outside of the city \$ 525.71			
To Balance			\$18,433.05
Less amount due W. F. Hoyt			112.62
			18,320.43
			\$18,846.14
			\$18,846.14

1928		
Jan. 1	By Balance.....	\$18,320.43
The above balance is invested in the name of the Madison Park and Pleasure Drive Association as Trustee of Mr. and Mrs. A. Hollister Park Fund, as follows:		
	Joseph Hornung, mortgage, 5½%	\$ 5,000.00
	Aaron L. Parman, mortgage, 5½%	2,900.00
	John H. Lee, mortgage, 6%	1,000.00
	John M. Melaas, mortgage, 6%	1,000.00
	Russell S. Corona, mortgage, 5½%	500.00
	Geo. L. Ledwith, mortgage, 5½%	1,400.00
	Carrie S. Pierce, mortgage, 5½%	500.00
	Lillian Dunn, mortgage, 5½%	5,633.05
	Levi P. Palmer, mortgage, 5½%	500.00
		<hr/>
		\$18,433.05
	Less amount due F. W. Hoyt.....	112.62
		<hr/>
		\$18,320.43
Original Capital:		
	Principal, Sept. 17, 1913.....	\$12,279.61
	Principal, Sept. 20, 1917.....	212.75
		<hr/>
		\$12,492.36
	One-half income to Jan. 1, 1928.....	5,828.07
		<hr/>
		\$18,320.43

Respectfully submitted,
 FRANK W. HOYT,
Treasurer.

D. K. Tenney Park Fund

Statement from November 15, 1926, to January 1, 1928

1926		
Nov. 15	By Balance from last report.....	\$5,511.68
29	By Solomon Levitan, interest to December 1, 1926.....	\$ 45.00
Dec. 6	By interest on First National Bank certificates.....	2.79
1927		
Jan. 3	By Theta Building Association, interest in full.....	42.25
3	By Theta Building Association, premium.....	13.00
3	By interest on First National Bank certificates.....	2.82
11	By interest on First National Bank certificates.....	.45
18	By Russell Corona, interest to January 10, 1927.....	15.00
Mar. 8	By U. S. Treasury Note, interest in full.....	11.87
Apr. 1	By interest on First National Bank certificates.....	15.28
22	By Vera Voght, interest to April 20, 1927.....	15.00
May 26	By Solomon Levitan, interest to June 1, 1927.....	45.00

July 30	By Russell Corona, interest to July 10, 1927.....	\$15.00	
Sept. 29	By Carrie S. Pierce, interest to October 1, 1927.....	82.50	
Oct. 17	By Vera Voght, interest to October 20, 1927.....	15.00	
Nov. 25	By Solomon Levitan, interest to December 1, 1927.....	45.00	
Dec. 6	By interest on First National Bank certificates.....	4.17	\$370.13
	To Balance.....	\$5,881.81	
		<u>\$5,881.81</u>	<u>\$5,881.81</u>

1928

Jan. 1 By Balance..... \$5,881.81

The above balance is invested in the name of the Madison Park and Pleasure Drive Association as Trustee of the D. K. Tenney Park Fund as follows:

Solomon Levitan, Trust Deed, 6%.....	\$1,500.00
Vera Voght, Trust Deed, 6%.....	500.00
Russell Corona, Trust Deed, 6%.....	500.00
Carrie S. Pierce, Trust Deed, 5½%.....	3,000.00
First National Bank, certificates of deposit, 2, 2½, 3%....	381.81

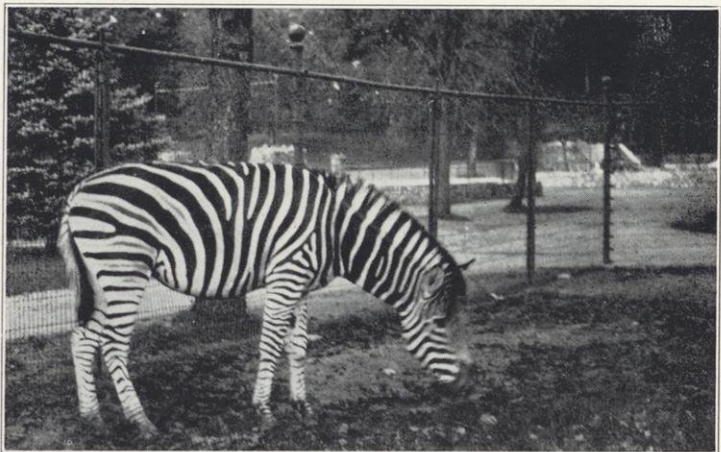
\$5,881.81

Respectfully submitted,

FRANK W. HOYT,
Treasurer.

I hereby certify that I have examined the accounts of Frank W. Hoyt, Treasurer, for the year 1927, and find them correct in all particulars

JOHN O. WALLESTAD



Zebra—Vilas Park Zoo

General Subscriptions for 1927

Aberg, W. J. P.....	\$15.00	Cantwell, F. W.....	10.00
Acly, C. R.....	5.00	Cantwell Printing Co.....	25.00
Adams, Gordon D.....	5.00	Capital City Bank.....	25.00
Adams, T. S.....	5.00	Capital Garage.....	5.00
Allen, Miss Katherine.....	20.00	Capital Wire Co.....	5.00
American Ice Cream Co.....	15.00	Cargill, Geo.....	5.00
American Stores Co.....	10.00	Cargill, Mrs. Mary S.....	15.00
Anderson, Edward.....	5.00	Cargill, W. W.....	3.00
Aylward, Dr. Richard.....	5.00	Carter, Dr. Homer M.....	5.00
Babcock, Stephen M.....	10.00	Castle & Doyle.....	25.00
Bank of Wisconsin.....	25.00	Cawley, James.....	5.00
Barlow, R. A.....	5.00	Chapman, C. B.....	10.00
Barstow, Rev. R. W.....	5.00	Chase, Prof. W. J.....	5.00
Bay View Stone Co.....	20.00	City Boathouse.....	10.00
Bartlett, R. D.....	5.00	Clark, Elizabeth.....	3.00
Barton, Albert O.....	1.00	Clark, H. J.....	2.00
Bates, W. B.....	10.00	Claude & Starck.....	10.00
Bean, Prof. Ernest.....	5.00	Cochrane, Mrs. E. K.....	5.00
Bennett, Prof. E.....	5.00	Coddington, Miss Hester.....	3.00
Bergh, Marcus C.....	5.00	Coe, J. H.....	10.00
Bergh, Reid M.....	2.00	Coleman, Joseph A.....	10.00
Bernard, Wm. P.....	15.00	Coleman, Thomas E.....	25.00
Birge, Anna.....	5.00	Collins Bros. Lumber Co.....	25.00
Birge, Dr. E. A.....	15.00	Collins, C. C. Lumber Co.....	10.00
Bitney, J. C.....	5.00	Commonwealth Tel. Co.....	5.00
Bitterman, J. C.....	5.00	Commons, Prof. John R.....	5.00
Blawusch, John.....	2.00	Community Laundry.....	5.00
Bleyer, Willard G.....	5.00	Community Men's Club.....	5.00
Boissard, Geo. A.....	5.00	Conklin, F. W.....	5.00
Botham, George W.....	10.00	Conklin, M. H.....	5.00
Bourke, John L.....	5.00	Corscot, J.....	2.00
Boyd, Joseph M.....	5.00	Coxon, Thomas.....	3.00
Boyd Co., The Joseph M.....	5.00	Crescent Clothing Co.....	10.00
Brabant, Edmond J.....	5.00	Cretney, T. J.....	5.00
Bradford, Irene.....	5.00	Critton, James N.....	5.00
Bradley, Mr. and Mrs. H. C.....	25.00	Crowley, Leo T.....	25.00
Brandenburg, O. D.....	15.00	Crownhart, Charles H.....	10.00
Breitenbach, G. H.....	5.00	Cullinane, John R.....	5.00
Briggs, P. A.....	2.00	Curran, C. E.....	5.00
Brittingham, Mary C.....	10.00	Daniels, Prof. F.....	5.00
Brittingham, T. E. Jr.....	10.00	Deadman, Dr. C. A.....	5.00
Brown, Dr. Damon A.....	5.00	Dean, Dr. Joseph.....	15.00
Brown, Mrs. Frank G.....	10.00	Denniston, R. H.....	5.00
Brown, S. L.....	5.00	Devine, W. A.....	10.00
Buckmaster, James A.....	10.00	Dick, Christian.....	5.00
Buehler, Fred.....	5.00	Diemer, M. E.....	5.00
Buell, Charles E.....	10.00	Dobelin, Chas. W.....	5.00
Bunting, C. H.....	5.00	Donald, John S.....	5.00
Burdick & Murray.....	15.00	Drives Fuel Co.....	5.00
Burger, Peter.....	15.00	Eagle Heights Land Co.....	25.00
Burrowbridge, Geo.....	2.00	Ekern, Herman L.....	10.00
Buser, R. E.....	5.00	Ela, Emerson.....	25.00
Butler, Harry L.....	25.00	Ellis, G. E.....	3.00
Cady, Emil C.....	3.00	Ellman, Geo.....	2.00
Cairns, Prof. W. B.....	5.00	Elwell, F. H.....	5.00

Engler, Wm.....	5.00	Harper, Dr. Carl S.....	5.00
English, Prof. H. R.....	5.00	Harper, J. C.....	10.00
Evjue, Wm. T.....	5.00	Hastings, Prof. Edwin G.....	5.00
Extrom, G. P.....	1.00	Hastings, W. A.....	2.00
Fargo, Prof. J. M.....	5.00	Haswell, Anna J.....	5.00
Farm Utilities Co.....	5.00	Hatch, Prof. K. L.....	5.00
Fauerbach, Philip.....	5.00	Haugen, N. P.....	5.00
Felton, A. P.....	5.00	Hauk, Henry.....	5.00
Felton, Carl.....	5.00	H'Doubler, Miss M. M.....	2.00
Fess, Perry.....	20.00	Heddles, Mrs. W. S.....	5.00
Fessenden, R. V.....	3.00	Heeb Co.....	5.00
Field, Maurice.....	5.00	Hefty, Mr. and Mrs. Thomas	10.00
Finch, V. C.....	5.00	Heise, O. E.....	5.00
Fiore, A., Coal Co.....	5.00	Helmicks, G. A.....	5.00
First Farm Mortgage Co.....	5.00	Hemminghaus, F. W.....	5.00
First National Bank & Cen- tral Wis. Trust Co.....	25.00	Herfurth, Theo.....	10.00
Fischer, Prof. Richard.....	10.00	Herling, W. H.....	1.00
Fish & Schulkamp.....	10.00	Herrington, C. W.....	5.00
Fish, Prof. Carl Russell.....	5.00	Hersch, B. Z.....	2.00
Fisk, Mrs. Geo. M.....	5.00	Hibbard, C. V.....	5.00
Five Point Pharmacy.....	5.00	Higgins, L. W.....	2.00
Fjelstad, Selma.....	5.00	Hill's, Inc.....	5.00
Flett, Mrs. Clara B.....	5.00	Hill, Carl.....	5.00
Forbes-Meagher Music Co.....	10.00	Hill, Thomann, & Beckwith	15.00
Ford, J. C.....	5.00	Hobbins, Mrs. J. W.....	10.00
Fox, Arthur O.....	25.00	Hohlfeld, Prof. A. R.....	5.00
Fox, Dr. Philip R.....	5.00	Holmes, George C.....	10.00
Frautschi, C. & Son.....	10.00	Holt, J. C.....	2.50
Frautschi, Emil J.....	5.00	Hommel, Carl E.....	5.00
French Battery Co.....	25.00	Hopkins, R. L.....	10.00
Fritz, Carl B.....	15.00	Hoppman, Hon. A. C.....	5.00
Gallistel, A. F.....	5.00	Horth, E. E.....	5.00
Gardner, E. H.....	10.00	Hoyt, Frank W.....	25.00
Gay, Miss L. M.....	5.00	Hudson, Charles H.....	5.00
Gay, Miss Sarah.....	5.00	Hull, Prof. C. L.....	5.00
Geisler, H. L.....	15.00	Humphrey, George C.....	5.00
Giddings, W.....	10.00	Hunt, G. M.....	2.00
Gilbert, Prof. E. M.....	5.00	Hunt, Henry J.....	5.00
Gilman, Prof. Stephan W.....	5.00	Hupprich, Wm.....	5.00
Glaeser, M. G.....	5.00	Hurd, Dr. Richard W.....	5.00
Gorst, Dr. Charles.....	10.00	Hutchcroft, L. W.....	5.00
Graham, Alexander.....	5.00	Hyde, Prof. Grant M.....	5.00
Gratz, A. W.....	3.00	Hyland, Mrs. John G.....	5.00
Grimm, John J.....	5.00	Icke, John F.....	25.00
Grover, Miss Arlene.....	2.50	Ingersoll, Prof. L. R.....	3.00
Grover, Miss Alice M.....	2.50	Jackson Clinic.....	10.00
Guyer, Prof. M. F.....	10.00	Jackson, Dr. Reginald H.....	25.00
Halbert, C. A.....	5.00	Jacobs, Frank W.....	10.00
Haley & Sayle.....	5.00	Jacobson, Norman S.....	5.00
Haley, John C. & Sons.....	5.00	James, Prof. John A.....	5.00
Hall, F. W.....	10.00	Jamieson, H. C.....	5.00
Hallauer, F. J.....	5.00	Jarvis, Charles W.....	3.00
Halligan, B. J.....	10.00	Jenkins, Miss Anna.....	1.00
Halpin, Prof. J. G.....	5.00	Johnson, Mrs. A.....	5.00
Hanks, L. M.....	25.00	Johnson, Carl A.....	25.00
Hansen, Dora M.....	5.00	Johnson, Chas. H.....	5.00
Hanson, G. O.....	5.00	Johnson, Mrs. E. H.....	25.00
Harbort, H. H.....	2.00	Johnson, Hobart S.....	25.00
Harlev, J. A.....	5.00	Johnson, J.....	3.00
		Johnson, Miss Laura B.....	5.00

Johnson, Mrs. Phoebe.....	15.00	Marling, Robert.....	5.00
Jonas, Dr. A. F.....	25.00	Marling, W. A.....	10.00
Jones, Burr W.....	25.00	Marshall, James G.....	5.00
Jones, Fred R.....	5.00	Marshall, Prof. Wm. S.....	10.00
Kanneberg, Adolph.....	5.00	Martens, Conrad.....	5.00
Karstens, F. W.....	10.00	Mason, Mrs. E. C.....	5.00
Kartack, R. E.....	10.00	Mason, Geo. W.....	15.00
Kennedy Dairy Co.....	25.00	Mason, Vroman.....	10.00
Kenney, A. P.....	2.00	Mathews, Geo. C.....	5.00
Kenney, John T.....	5.00	Matzdorf, W.....	3.00
Kentzler, A. R.....	5.00	Maurer, Prof. E. R.....	5.00
Kiekhofer, Prof. W. H.....	10.00	Mautz Bros.....	15.00
Kirchoffer, Wm. G.....	15.00	Mayer & Co., Oscar.....	30.00
Klein & Dickert Co.....	10.00	Mayers, Andrew A.....	10.00
Kleinheinz, A.....	3.00	Mead, D. W.....	25.00
Kleinheinz, Prof. F.....	1.00	Mendenhall, Prof. E. C.....	5.00
Kneller, Engelhardt Co.....	5.00	Meyer, Rev. E. J.....	5.00
Kney, E. O.....	5.00	Miller, B. E.....	5.00
Knox, Rev. P. B.....	10.00	Miller, G. J.....	1.00
Koch, Henry.....	3.00	Miller, H. L.....	5.00
Koen, Ross M.....	5.00	Milverstedt, A. G.....	5.00
Kramer, A. H.....	10.00	Montieth, Mary.....	5.00
Krauskopf, Prof. F. S. C.....	3.00	Moore, Prof. J. G.....	5.00
Kroncke, George.....	10.00	Moore, H. O.....	5.00
Kropf, R. R.....	10.00	Morgan Bros.....	10.00
Laird, Arthur G.....	10.00	Morris, A. B.....	5.00
Larson, A. C.....	5.00	Morris, Dr. Sarah.....	3.00
Larson, M. D.....	10.00	Morrison, F. B.....	5.00
Law, Law & Potter.....	5.00	Moseley Book Co.....	20.00
Law, Edward J.....	5.00	Mueller, Dr. W. H.....	5.00
Levenick, M. H.....	5.00	Myrland, A. J.....	10.00
Lindsay, Dr. Wm. T.....	25.00	Mryland, Ruth.....	3.00
Lobeck, Prof. A. K.....	3.00	Naffz, Carl.....	10.00
Loomis, Mrs. Frances S.....	5.00	Neckerman, Reuben J.....	5.00
Lorraine Hotel.....	10.00	Nelson, Robert N.....	10.00
Loughney, Rev. George.....	10.00	Nelson & Son, O. M.....	10.00
Loveland, Reuben E.....	10.00	Netherwood, Harry G.....	5.00
Lumpkin, Rev. H. H.....	2.00	Nilles, John A.....	5.00
Lunder Furniture Co.....	5.00	Noe, Mrs. Jessie.....	25.00
Lunenschloss, L. L.....	5.00	Northwestern Securities Co.....	15.00
Luther, Prof. Ernest L.....	5.00	Olbrich, M. B.....	15.00
McGowan, Mrs. H. B.....	5.00	Olds, L. L.....	5.00
McKay Nursery Co.....	15.00	Olman, A. O.....	5.00
McKenna, John C.....	15.00	Olson, Prof. J. E.....	5.00
McMullen, C. L.....	10.00	Olson, Oscar C.....	5.00
Mack, Herman.....	5.00	Olson & Veerhusen.....	15.00
Mack, Mrs. J. A.....	25.00	O'Malley, R. C.....	10.00
Mack, Mrs. J. G. D.....	10.00	Orvis, Wm. H.....	3.00
Madison Bowling & Billiards.....	10.00	O'Shea, Prof. M. V.....	5.00
Madison Fuel Co.....	5.00	Overton, Prof. James B.....	5.00
Madison Gas & Elec. Co.....	25.00	Owen, Ray S.....	5.00
Madison Railways Co.....	10.00	Owen, Walter C.....	10.00
Madison Realty Co.....	50.00	Owens, Wm.....	15.00
Madison Steam Dye Works.....	5.00	Palmer, A. G.....	3.00
Malec, Carl.....	5.00	Pantorium Co.....	10.00
Malec, Venzel E.....	3.00	Park, Allen G.....	5.00
Malone, W. C.....	5.00	Park, Ben W.....	3.00
Manchester, Harry S.....	10.00	Parke, H. J.....	5.00
Mansfield-Caughey Co.....	20.00	Parker, E. E.....	5.00
Marlatt, Prof. Abbie L.....	5.00	Parker, W. N.....	10.00

Parkinson, Edward E.....	5.00	Schlingen, Fred M.....	15.00
Peabody, F. L.....	1.00	Schmedeman, R. L. & Co...	5.00
Peshak, E. H.....	3.00	Schmelzkopf, E.....	5.00
Peterson, John.....	10.00	Schmitz, August J.....	5.00
Peterson, Prof. W. H.....	3.00	Schneider, C. J.....	3.00
Pfanku, Vern C.....	5.00	Schoen, Frank X.....	5.00
Phillip, Prof. J. D.....	5.00	Schoenwetter, F. O.....	3.00
Photoart Shop.....	5.00	Schreiber, Mrs. Clara.....	5.00
Pickford, Henry W.....	5.00	Schubring, E. J. B.....	15.00
Plaenert, F. C.....	5.00	Schulte, W. B.....	5.00
Plaenert, Walter.....	5.00	Security State Bank.....	15.00
Post, Mr. and Mrs. Chas....	2.50	Shakshesky, L. W.....	10.00
Post, Lewis.....	5.00	Sharrett, C. A.....	3.00
Priestley, T. M.....	5.00	Sheldon, Dr. Chas. S.....	5.00
Puelicher, A. P.....	3.00	Shiple, Geo. A.....	5.00
Puetz, H. H.....	3.00	Showerman, Prof. G.....	5.00
Putnam, C. M.....	5.00	Siebecker, L. L.....	5.00
Qualley, R. N.....	2.00	Simon Bros.....	5.00
Quann, Mike.....	5.00	Slichter, Chas. S.....	15.00
Quinn, Nicholas.....	10.00	Sloan, Will F.....	5.00
Ramsay, J. B.....	10.00	Smith, C. A.....	5.00
Rayne, Frederick W.....	5.00	Smith, Dr. Karl W.....	10.00
Reitan-Lerdahl & Co.....	5.00	Smith, Prof. Leonard S.....	5.00
Rentschler, Fred.....	15.00	Smith, Leon A.....	5.00
Reynolds, B. S.....	5.00	Smith, Walter McWynn....	10.00
Richards, H. S.....	5.00	Smith, Wm. M.....	5.00
Richtman, Prof. W. O.....	5.00	Smythe, H. A.....	10.00
Rieder, August.....	3.00	Southern Wis. Produce Co...	5.00
Riley, J. W.....	5.00	Standard Oil Co.....	5.00
Risser, Fred.....	5.00	State Bank.....	10.00
Ritter Automobile Co.....	10.00	Stebbins, Byron H.....	10.00
Roach, Mrs. W. L.....	10.00	Stebbins, Prof. Joel.....	5.00
Robbins, Dr. G. H.....	5.00	Stebbins, Dr. W. W.....	5.00
Roebuck, Prof. J. R.....	5.00	Stensland, E. B.....	5.00
Rogers, A. T.....	10.00	Stehr, W. H. Jr.....	3.00
Romig, Mrs. C. B.....	1.50	Stenjem, W. J.....	2.00
Rosenberry, Jdg. M. B.....	10.00	Steve, Prof. Wm. F.....	5.00
Ross, Prof. E. A.....	10.00	Stevens, Miss Amelia.....	25.00
Rowlands, A. E.....	5.00	Storey, O. W.....	5.00
Roys, Wm. B.....	10.00	Strand, Olaf.....	3.00
Royston, R. T.....	5.00	Straus Printing Company ..	10.00
Rundell, Prof. O. S.....	5.00	Stroud, Ray M.....	5.00
Rundle-Spence Mfg. Co.....	10.00	Struck, H. J.....	5.00
Runge, A. E.....	5.00	Suhr, F. W.....	10.00
Ryan, Wm.....	10.00	Suhr, John.....	10.00
Sachtjen, Carl.....	2.00	Sullivan, D. C.....	5.00
Sakrison & Rocky Co.....	5.00	Sweet, C. V.....	2.50
St. John, John.....	10.00	Swenson, Wm.....	5.00
Sammis, Prof. J. L.....	5.00	Taylor, Edwin L.....	5.00
Sample, Omar H.....	5.00	Taylor, Dr. F. B.....	5.00
Sanborn, Philip G.....	5.00	Taylor, Prof. W.....	5.00
Sander, W. R.....	5.00	Taylor, W. F.....	5.00
Sanford, Miss Delia C.....	5.00	Teamster's Union.....	5.00
Sanford, Miss Fannie.....	5.00	Teckemeyer, R. A.....	5.00
Sannes, E. H.....	5.00	Teckemeyer, W. J.....	5.00
Sauthoff, Harry.....	10.00	Tenney, Chas. H.....	10.00
Scanlon-Morris Co.....	10.00	Thomas, Herbert H.....	10.00
Schein, S. B.....	5.00	Thomas, L. F.....	5.00
Schenk, Herbert, C.....	15.00	Thompson, Harvey L.....	5.00
Schimming, H.....	5.00	Thwaites, Jessie T.....	10.00

Tiffany, Prof. E. M.....	5.00	Waterman, H. G.....	10.00
Toebaas, O. T.....	10.00	Wehrmann, Charles.....	5.00
Tormey, Dr. T. W.....	15.00	Welke, Dr. E. G.....	5.00
Tottingham, Prof. W. E.....	2.00	Welty, J. C.....	5.00
Tough, Edward.....	5.00	West Kentucky Coal Co....	5.00
Toussaint, A. M.....	5.00	Weston, Dr. Frank.....	5.00
Toussaint, H.....	10.00	Whipple, H. E.....	2.00
Towell, Arthur, Inc.....	5.00	White, John C.....	5.00
Trachte Bros. Co.....	10.00	Wiedner, W. E.....	5.00
Trachte, H. E.....	1.00	Wilder, Mrs. J. W.....	5.00
Tracy & Kilgore.....	10.00	Winkley, F. D.....	5.00
Tressler, Albert W.....	15.00	Winslow, C. P.....	5.00
Troug, Prof. and Mrs. E....	5.00	Wis. Advertising Co.....	5.00
Turneure, Dean F E.....	10.00	Wolff, Kubly & Hirsig Co... 25.00	
Uhl, Prof. W. L.....	5.00	Wootton, Frank M.....	5.00
Ulve, E. M.....	5.00	Yawkey-Crowley Lumber Co	15.00
University Co-Operative Co.	50.00	Young, E. J.....	10.00
Valvoline Oil Co.....	15.00	Zantrow, H. C.....	3.00
Van Hise, Alice.....	5.00	Zdanowicz, Prof. C. D.....	5.00
Van Ostrand, E. H.....	5.00	Zimmerman, Hon. A. G....	5.00
Van Valzah, Dr. Robert....	5.00	Acacia.....	10.00
Van Vleck, Prof. Edward...	5.00	Sigma Phi.....	1.00
Vaughan, W. I.....	5.00	Zeta Beta.....	5.00
Viel, L. C.....	1.00		
Wagner, Prof. George.....	10.00		
Wald, C. J.....	5.00	Total General Subscrip-	
Warner, Ernest N.....	15.00	tion for 1927.....	\$4,073.00



Lake Front Park

Madison Park
and
Pleasure Drive Association

Cash and Disbursements
Park Budget

1927

STATEMENT OF EXPENDITURES AND RECEIPTS FOR RECREATIONAL PURPOSES FOR THE YEAR 1927

Expenditures

	<i>Budget</i>	<i>Expenditures</i>	<i>Unexpended</i>	<i>Excess</i>
Administration.....	\$ 4,450.00	\$ 4,169.92	\$ 280.08
City Forester.....	2,400.00	10,483.70	\$ 8,083.70
Monona Skating Rink.....	925.00	860.38	64.62
△ Tenney Park.....	8,614.41	10,916.05	2,301.64
Tenney Park Bath House.....	2,945.90	2,108.32	837.58
Tenney Park Lavatory.....	391.00	391.00
△ Brittingham Park.....	9,396.45	9,034.34	362.11
Brittingham Boat House.....	2,998.20	3,619.83	621.63
Brittingham Bath House.....	5,388.90	5,938.93	550.03
△ Henry Vilas Park.....	13,634.92	20,689.87	7,054.95
Henry Vilas Lavatory.....	297.20	243.85	53.35
Lake Front Park.....	3,707.59	3,049.29	658.30
△ Oilbrich Park.....	83.40	83.40
East Washington Boulevard.....	2,270.00	3,069.34	799.34
△ B. B. Clarke Park.....	3,792.47	906.09	2,886.38
Owen Parkway.....	250.00	289.75	39.75
△ Orton Park.....	932.91	1,127.08	194.17
△ Burrows Park.....	2,340.00	1,276.99	1,063.01
Olive Jones Field.....	214.76	622.22	407.46
△ Evergreen Park.....	25.00	124.60	99.60
West Washington Boulevard.....	200.00	276.52	76.52
△ Maple Park.....	200.00	271.45	71.45
Spoooner Street Viaduct.....	25.00	25.00
Commonwealth-Hollister.....	75.00	107.47	32.47
Lake Mendota Skating.....	600.00	267.99	332.01
Franklin Street Boat.....	738.00	995.18	257.18
Fair Oaks Playground.....	200.00	200.00
Hillington Park.....	400.00	467.14	67.14
△ Barry Park.....	800.00	762.98	37.02
Willows.....	668.00	664.48	103.52
Outside Drives.....	3,000.00	3,000.00
Street Ends.....	1,300.00	178.48	1,121.52
Street Trees.....	3,000.00	19.51	2,980.49
Lake Front Extension.....	2,910.74	3,764.28	853.34
Quarantine Hospital.....	500.00	133.15	366.85
Washington Oval.....	200.00	279.02	79.02

← Morrison Street Park.....	50.00	27.17	22.83
Madison General Hospital.....	75.00	57.10	17.90
Elmside Boulevard.....	50.00	50.00
City Dump.....	1,000.00	48.96	951.04
← Kendall Park.....	100.00	66.40	33.60
South Madison Boulevard.....	1,020.00	473.42	546.58
Park Equipment.....	9,401.75	8,231.23	1,170.52
Olin Park.....	6,452.95	6,740.42	287.47
Wingra Locks.....	2,175.00	269.94	1,905.06
Yahara Locks.....	5,700.00	802.89	4,897.11
Golf Course.....	4,230.00	7,996.72	3,766.72
Henry Vilas Zoo.....	31,707.77	32,788.85	1,081.08
Celebrations.....	200.00	146.05	53.95
Piers.....	300.00	235.16	64.84
Stevens Field.....	5,000.00	4,405.78	594.22
General Repairman.....	2,420.00	2,420.00
Madison Parks Foundation.....	2,561.56	2,561.56
	<u>\$149,673.92</u>	<u>\$154,553.25</u>	<u>\$24,490.49</u>	<u>\$29,369.82</u>
<i>Revenues</i>		<i>Receipts</i>	<i>Excess</i>	<i>Unrealized</i>
Park Concessions.....	\$ 1,500.00	\$ 2,410.50	\$ 910.50
Brittingham Boat House.....	400.00	771.50	371.50
Brittingham Bath House.....	50.00	48.30	\$1.70
Tenney Park Bath House.....	500.00	435.70	64.30
Olin Park—Rental.....	100.00	140.00	40.00
Olin Park—Tourist.....	2,265.30	2,265.30
B. J. Stevens Athletic Field.....	978.44	978.44
B. J. Stevens Athletic Field.....	657.00	657.00
Tree Trimming.....	6,000.00	3,771.82	2,228.18
Municipal Golf Course.....	1,500.00	8,972.25	7,472.25
	<u>\$10,050.00</u>	<u>\$20,450.81</u>	<u>\$12,694.99</u>	<u>\$2,294.18</u>
Excess of Receipts over Budget Estimate.....	\$10,400.81
Excess of Expenditures over Budget Estimate.....	4,879.33
Excess of Receipts over Expenditures.....	\$ 5,521.48

I certify that the foregoing statement is true and correct to the best of my knowledge and belief.

GEORGE NELSON, Auditor.

Treasurer's Report

To the Members of the Madison Park and Pleasure Drive Association:

GENTLEMEN:

The following is a condensed statement of the financial transactions for the year ending December 31, 1928.

Receipts

Balance in Bank, January 1, 1927.....	\$ 275.43
1928 Subscriptions.....	3,411.00
1927 Subscriptions.....	37.00
Interest.....	491.20
Farwell Drive Subscriptions.....	25.00
Appropriation by City of Madison.....	3,000.00
	<hr/>
	\$7,239.63

Disbursements

Miscellaneous.....	\$1,181.08
Lake Mendota Drive.....	690.82
Farwell Drive.....	1,064.13
Owen Parkway Drive.....	3,821.61
Work by Park Men.....	5.00
Balance in Bank, January 1, 1929.....	476.99
	<hr/>
	\$7,239.63
	<hr/>
January 1, 1929, by balance.....	\$ 476.99

Mr. and Mrs. A. H. Hollister Park Fund
Statement from January 1, 1928, to January 1, 1929

1928		
Jan.	1	By Balance from last report.....
	9	By Russell S. Corona, interest to Jan. 10, 1928.....
		\$ 15.00
Feb.	2	By Levi P. Palmer, interest in full.....
	21	By John M. Melaas, interest to Feb. 23, 1928.....
		27.50
Mar.	30	By Joseph Hornung, interest to Mar. 22, 1928.....
	30	By Aaron Parman, interest in full.....
		137.50
Apr.	4	By C. S. Pierce, interest to April 1, 1928
	12	By Northwestern Securities Co., interest in full.....
		7.72
	12	By Northwestern Securities Co., interest in full.....
		.23
	17	By Lillian Dunn, interest to April 14, 1928.....
		144.27
	20	By John H. Lee, interest to Mar. 5, 1928
		30.00
May	19	By Geo. L. Ledwith, interest to May 17, 1928.....
		38.50
July	9	By Russell S. Corona, interest to July 10, 1928.....
		15.00
Aug.	18	By Carl and Winnie Knickmeier, interest to Aug. 16, 1928.....
	24	By John M. Melaas, interest to Aug. 23, 1928.....
		27.50
Sept.	7	By John H. Lee, interest to Sept. 5, 1928
	24	By Joseph Hornung, interest to Sept. 22, 1928.....
		137.50
	26	By Carrie S. Pierce, interest to Oct. 1, 1928.....
		13.75
Oct.	4	By interest on bank certificates.....
	17	By Lillian Dunn, interest to Oct. 14, 1928.....
		165.00
Nov.	19	By Geo. L. Ledwith, interest to Nov. 17, 1928.....
		24.75
		<hr/>
		982.41
		To one-half of income \$982.41 paid Madison Park and Pleasure Drive Association used on drives outside of the city.....
		491.20
		To Balance.....
		18,811.64
		<hr/>
		\$19,302.84
		<hr/>
		\$19,302.84

1928		
Jan. 1	By Balance.....	\$18,811.64
	The above balance is invested in the name of the Madison Park and Pleasure Drive Association as Trustee of Mr. and Mrs. A. H. Hollister Park Fund, as follows:	
	Joseph Hornung, 5½%.....	\$ 5,000.00
	John H. Lee, 6%.....	1,000.00
	John A. Melaas, 5½%.....	1,000.00
	Russell S. Corona, 5½%.....	500.00
	Geo. L. Ledwith, 5½%.....	900.00
	Lillian Dunn, 5½%.....	6,000.00
	Carrie S. Pierce, 5½%.....	500.00
	Carl Knickmeier, 5½%.....	3,000.00
	Wayne R. Bentley, 5½%.....	911.64
		<hr/>
		\$18,811.64
	Original Capital:	
	Principal, Sept. 17, 1913.....	\$12,279.61
	Principal, Sept. 20, 1917.....	212.75
		<hr/>
		\$12,492.36
	One-half income to Jan. 1, 1929.....	6,319.28
		<hr/>
		\$18,811.64

Respectfully submitted,

FRANK W. HOYT,
Treasurer**D. K. Tenney Park Fund****Statement from January 1, 1928, to January 1, 1929**

1928		
Jan. 1	By Balance from last report.....	\$ 5,881.81
	By interest collected.....	297.34
	To Balance.....	\$6,179.15
		<hr/>
		\$6,179.15
		<hr/>
1929		
Jan. 1	By Balance.....	\$6,179.15
	The above balance is invested in the name of the Madison Park and Pleasure Drive Association as Trustee of the D. K. Tenney Park fund as follows:	
	Russell Corona, 6%.....	\$ 500.00
	Carrie S. Pierce, 5½%.....	3,000.00
	First National Bank, certificates of deposit, 2, 2½, 3%.....	179.15
	Treas. U. S. A. certificates, 4%.....	2,500.00
		<hr/>
		\$6,179.15

Respectfully submitted,

FRANK W. HOYT,
Treasurer.

I hereby certify that I have examined the accounts of Frank W. Hoyt, Treasurer, for the year 1928, and find them correct in all particulars.

JOHN O. WALLESTAD.

General Subscriptions for 1928

Acly, C. R.....	\$5.00	Cochrane, E. K.....	5.00
Adams, Gordon D.....	5.00	Coddington, Miss Hester...	3.00
Adams, T. S.....	5.00	Coe, J. H.....	10.00
Allen, Miss Katherine.....	20.00	Coleman, Joseph A.....	10.00
American Ice Cream Co.....	15.00	Coleman, Thomas E.....	25.00
Aylward, Dr. Richard.....	5.00	Collins Bros. Lumber Co....	25.00
Babcock, Prof. Stephen M...	15.00	Commercial National Bank.	15.00
Bank of Wisconsin.....	25.00	Commons, Prof. John R.....	5.00
Bancroft, J. A.....	5.00	Commonwealth Tel. Co.....	10.00
Barlow, Dr. R. A.....	5.00	Conklin, J. W.....	5.00
Barstow, Rev. R. W.....	5.00	Conklin, M. H.....	5.00
Bartlett, R. D.....	5.00	Corscot, J.....	2.00
Barton, Albert O.....	1.00	Crescent Electric Co.....	2.00
Bates, W. B.....	10.00	Cretney, T. J.....	5.00
Bay View Stone Co.....	20.00	Crowl, Ralph.....	5.00
Bean, Prof. Ernest.....	5.00	Crowley, Leo T.....	25.00
Bennett, Prof. E.....	5.00	Crownhart, Charles H.....	10.00
Bergh, Marcus C.....	5.00	Cullinane, John R.....	5.00
Birge, Anna.....	5.00	Daniels, Farrington.....	5.00
Birge, Dr. E. A.....	15.00	Davis, Dr. F. A.....	10.00
Bitney, J. C.....	5.00	Deadman, C. A.....	5.00
Botham, George W.....	10.00	Dean, Dr. Joseph.....	15.00
Bourke, John L.....	5.00	Devine, W. A.....	10.00
Boyce, Dr. S. R.....	10.00	Dick, Christian.....	5.00
Boyd, Joseph M.....	5.00	Dobelin, Chas. W.....	5.00
Boyd Co., The Joseph M....	5.00	Donald, John S.....	5.00
Bradford, Irene.....	5.00	Dwight, C. G.....	10.00
Bradley, Mr. and Mrs. H. C.	25.00	Ela, Emerson.....	25.00
Brandenburg, O. D.....	15.00	Ellman, George.....	2.00
Breitenbach, G. H.....	5.00	Elsom, Prof. J. C.....	5.00
Briggs, P. A.....	2.00	Elver, G. W.....	5.00
Brittingham, Mary C.....	10.00	Elwell, F. H.....	5.00
Brittingham, T. E., Jr.....	10.00	Endres, Joseph.....	5.00
Brown, Mrs. Frank G.....	10.00	English, Prof. H. R.....	5.00
Brown, S. L.....	5.00	Extrom, G. P.....	1.00
Buehler, Fred W.....	5.00	Fargo, Prof. J. M.....	5.00
Buell, Charles E.....	10.00	Farm Utilities Co.....	5.00
Burdick & Murray.....	15.00	Farrell, Sam.....	5.00
Burrowbridge, George.....	2.00	Fauerbach, Phillip.....	5.00
Buser, R. E.....	5.00	Felton, A. P.....	5.00
Butler, Harry L.....	25.00	Felton, Carl.....	5.00
Cairns, Prof. W. B.....	5.00	Fess, Perry.....	20.00
Cantwell Printing Co.....	25.00	Fessenden, R. V.....	3.00
Capital City Bank.....	25.00	Finch, V. C.....	5.00
Capital Garage.....	5.00	First Farm Mrg. Co.....	5.00
Capital Wire Co.....	5.00	First Nat'l Bank & Central	
Cargill, Mrs. Mary S.....	15.00	Wis. Trust Co.....	25.00
Cargill, W. W.....	3.00	Fisch, Prof. Richard.....	10.00
Castle & Doyle.....	25.00	Fish & Schulkamp.....	10.00
Cawley, James.....	5.00	Fisk, Mrs. George M.....	5.00
Chapman, C. B.....	10.00	Fjelstad, Selma.....	5.00
Chase, Prof. W. J.....	5.00	Flett, Mrs. Clara B.....	5.00
Clark, Rev. J. R.....	2.00	Forbes-Meagher Music Co...	10.00
Claude & Starck.....	10.00	Ford, J. C.....	5.00
Cnare, Frank.....	3.00	Fox, Arthur O.....	25.00

Fox, Philip R.....	5.00	Humphrey, George C.....	5.00
Fowlkes, Prof. J. G.....	5.00	Hunt, G. M.....	2.00
Frautschi, C., & Sons.....	10.00	Hunt, Henry J.....	5.00
Frautschi, Emil J.....	5.00	Hupprich, Wm.....	5.00
French Battery Co.....	20.00	Hyde, Prof. Grant M.....	5.00
Fritz, Carl B.....	15.00	Hyland, Mrs. John G.....	5.00
Gallistel, A. F.....	5.00	Icke, John F.....	25.00
Ganser, Dr. W. J.....	10.00	Ingersoll, Prof. L. R.....	3.00
Gastrow, F. E.....	5.00	Jackson, Dr. Reginald H.....	25.00
Gay, Miss L. M.....	5.00	Jacobs, Frank W.....	10.00
Geisler, H. L.....	15.00	Jacobson, Norman S.....	5.00
Gettle, L. E.....	5.00	James, Prof. John A.....	5.00
Giddings, W. E.....	10.00	Jamieson, H. C.....	5.00
Gilbert, Prof. E. M.....	5.00	Jarvis, Charles W.....	3.00
Gilman, Prof. Stephan.....	5.00	Jenkins, Miss Anna.....	1.00
Greenleaf, Chas.....	3.00	Johnson, Carl A.....	25.00
Grimm, John.....	5.00	Johnson, Chas. H.....	5.00
Grover, Miss Alice M.....	2.50	Johnson, Mrs. E. H.....	25.00
Grover, Miss Arlene.....	2.50	Johnson, Miss G. E.....	2.00
Gulesserian, S. A.....	5.00	Johnson, Hobart S.....	25.00
Haake, Peter.....	5.00	Johnson, Mrs. Phoebe.....	15.00
Haley, John C., & Sons.....	5.00	Jones, Burr W.....	25.00
Haley & Sayle.....	5.00	Jones, Fred R.....	5.00
Hallauer, F. J.....	5.00	Kampen, O. A.....	5.00
Halligan, B. J.....	10.00	Kanneberg, Adolph.....	5.00
Halpin, Prof. J. G.....	5.00	Karstens, F. W.....	10.00
Hanks, L. M.....	25.00	Kartack, R. E.....	10.00
Hanks, Mrs. Mary E. V.....	25.00	Kennedy Dairy Co.....	15.00
Hanks, M. W.....	5.00	Kenney, A. P.....	2.00
Hansen, Ben.....	2.00	Kentzler, A. R.....	5.00
Hanson, Dora M.....	5.00	Kiekhofer, Prof. W. H.....	10.00
Hanson, G. O.....	5.00	Kimball, Norman.....	3.00
Harbort, H. H.....	2.00	Kirchoffer, Wm. G.....	15.00
Harley, J. A.....	5.00	Kleinheinz, A.....	3.00
Harper, J. C.....	5.00	Kleinheinz, Prof. F.....	1.00
Hastings, Prof. Edwin G.....	5.00	Knox, Rev. P. B.....	10.00
Hastings, W. A.....	2.00	Kramer, A. H.....	10.00
Hatch, Prof. K. L.....	5.00	Krauskopf, Prof. F. S. C.....	3.00
Haugen, N. P.....	5.00	Kroncke, George.....	10.00
Hauk, Henry.....	5.00	Kropf, R. R.....	5.00
Hawley, L. F.....	10.00	Laird, Arthur G.....	10.00
H'Doubler, Miss M. M.....	1.00	Lake City Bottling Works.....	3.00
Heddles, Mrs. W. S.....	5.00	Larsen, E. M.....	3.00
Heeb Co.....	5.00	Larson, A. C.....	5.00
Hefty, Mr. and Mrs. Thomas.....	10.00	Larson, M. D.....	10.00
Helmicks, G. A.....	5.00	Law, Edward J.....	5.00
Herfurth, Theo.....	10.00	Law, Law & Potter.....	5.00
Herrington, C. W.....	5.00	Lawrence, R. E.....	5.00
Hibbard, C. V.....	5.00	Lewis, Theo. G.....	5.00
Hobbins, Mrs. J. W.....	10.00	Lobeck, Prof. A. K.....	3.00
Hoffman Feed Co.....	15.00	Loomis, Mrs. Frances S.....	5.00
Hohlfeld, Prof. A. R.....	5.00	Lotz, Henry.....	5.00
Holmes, Geo. C.....	10.00	Loughney, Rev. George.....	10.00
Hopkins, R. L.....	10.00	Loveland, Reuben E.....	5.00
Hoppmann, Hon. A. C.....	5.00	Lumpkin, Rev. H. H.....	2.00
Horner, F. R.....	5.00	Lunenschloss, L. L.....	5.00
Horth, E. E.....	2.00	Luther, Prof. Ernest L.....	5.00
Hoyt, Frank W.....	25.00	McGilvary, E. B.....	5.00
Hudson, Chas. H.....	5.00	McKay Nursery Co.....	15.00
Hull, Prof. C. L.....	5.00	McMullen, C. L.....	10.00

Mack, Mrs. J. G. D.....	10.00	Parke, H. J.....	5.00
Madison Fuel Co.....	5.00	Parker, E. E.....	5.00
Madison Gas & Electric Co.	25.00	Peterson, John.....	10.00
Madison Steam Dye Works.	5.00	Peterson, Prof. W. H.....	3.00
Malec, Carl.....	5.00	Pfanku, Vern C.....	5.00
Malec, R. V.....	3.00	Phillips, Prof. J. D.....	5.00
Malone, W. C.....	5.00	Photoart Shop.....	5.00
Manchester, Harry S.....	10.00	Pickford, Henry W.....	5.00
Mansfield-Caughey Co.....	20.00	Plaenert, F. C.....	5.00
Markwardt, L. J.....	2.00	Potter, E. J.....	3.00
Marlatt, Prof. Abbie L.....	5.00	Power, W. W.....	5.00
Marling, W. A.....	10.00	Priestley, T. M.....	5.00
Marshall, James G.....	5.00	Proudfit, Mrs. A. E.....	5.00
Marshall, Prof. Wm. S.....	10.00	Puelicher, A. P.....	3.00
Martens, Conrad.....	5.00	Puetz, H. H.....	3.00
Mason, Mrs. E. C.....	5.00	Purcell Auto Co.....	10.00
Mason, Geo. W.....	15.00	Putnam, C. M.....	5.00
Mason, Vroman.....	10.00	Qualley, R. N.....	2.00
Mathews, Geo. C.....	5.00	Quann, Mike.....	5.00
Matzdorf, W.....	3.00	Quinn, Nicholas.....	10.00
Maurer, Prof. E. R.....	5.00	Rayne, Frederick W.....	5.00
Mayer & Co., Oscar.....	20.00	Reitan-Lerdahl & Co.....	5.00
Mayers, Andrew A.....	10.00	Rennebohm, Oscar.....	10.00
Mead, D. W.....	25.00	Reynolds, B. S.....	5.00
Meanwell, Prof. W. E.....	5.00	Richtman, Prof. W. O.....	5.00
Meyer, Rev. E. J.....	5.00	Risser, Fred.....	5.00
Miller, G. J.....	1.00	Ritter Automobile Co.....	10.00
Miller, H. L.....	5.00	Roach, Mrs. W. L.....	10.00
Milverstedt, A. G.....	5.00	Romig, Mrs. C. B.....	1.50
Montieth, Mary.....	5.00	Rosenberry, Jdg. M. B.....	10.00
Moore, Prof. J. G.....	5.00	Ross, Prof. E. A.....	8.00
Moores, H. O.....	5.00	Rowlands, A. E.....	5.00
Morgan Bros.....	10.00	Royston, R. T.....	5.00
Morris, A. B.....	5.00	Roys, Wm. B.....	10.00
Morriss, Dr. Sarah, J.....	3.00	Rundle-Spence Mfg. Co.....	10.00
Moseley Book Co.....	20.00	Ryan, Wm.....	10.00
Mueller, Dr. W. H.....	5.00	St. John, John.....	10.00
Myrland, August J.....	10.00	Sammis, Prof. J. L.....	5.00
Myrland, Ruth H.....	3.00	Sample, Omar H.....	5.00
Nardin, F. Louise.....	5.00	Sander, W. R.....	5.00
Nelson, George.....	5.00	Sanford, Miss Delia C.....	5.00
Nelson & Son, O. M.....	10.00	Sanford, Miss Fannie.....	5.00
Nelson, Robert N.....	10.00	Sauthoff, Harry.....	10.00
Netherwood, Harry G.....	5.00	Scanlon-Morris Co.....	10.00
Northwestern Sec. Co.....	15.00	Schein, S. B.....	5.00
Olbrich, M. B.....	15.00	Schenk, Herbert C.....	15.00
Olds, L. L.....	5.00	Schimming, H.....	5.00
Olman, A. O.....	5.00	Schlingen, Fred M.....	15.00
Olson, Prof. J. E.....	5.00	Schmitz, August J.....	5.00
Olson, Oscar C.....	5.00	Schoelkopf, Louis F.....	125.00
Olson & Veerhusen.....	15.00	Schoen, Frank.....	5.00
O'Malley, R. C.....	10.00	Schoenwetter, F. O.....	3.00
Orne, Emil.....	2.00	Schubring, E. J. B.....	15.00
Orvis, Wm. H.....	3.00	Schulte, W. B.....	5.00
O'Shea, Prof. M. V.....	5.00	Security State Bank.....	15.00
Owen, Ray S.....	5.00	Shakshesky, L. W.....	10.00
Owen, Walter C.....	10.00	Sharrett, C. A.....	3.00
Owens, Wm.....	15.00	Sheldon, Dr. Chas. S.....	5.00
Park, Allan G.....	5.00	Showerman, Prof. G.....	5.00
Park, Ben W.....	3.00	Simon Bros.....	5.00

Slaughter, Mrs. M. S.....	5.00	Toussaint, A. M.....	5.00
Slichter, Chas. S.....	15.00	Toussaint, H.....	10.00
Sloan, Will F.....	5.00	Trachte, H. E.....	1.00
Smith, Harrison.....	5.00	Tracy & Kilgore.....	10.00
Smith, Dr. Karl W.....	10.00	Tressler, Albert W.....	15.00
Smith, Leon A.....	5.00	Trumpf, E. C.....	3.00
Smith, Walter M.....	10.00	Truog, Prof. and Mrs. E...	5.00
Smith, Wm. M.....	5.00	Turneure, Dean F. E.....	10.00
Smythe, H. A.....	10.00	Turner, Glenn P.....	5.00
Snow, Prof. B. W.....	5.00	Uhl, Prof. W. L.....	5.00
Standard Oil Co.....	5.00	Valvoline Oil Co.....	15.00
State Bank.....	10.00	Van Valzah, Dr. Robert...	5.00
Stebbins, Byron H.....	10.00	Van Vleck, Prof. Edward...	5.00
Stebbins, Prof. Joel.....	5.00	Vaughn, W. I.....	5.00
Stebbins, Dr. W. W.....	5.00	Viel, L. C.....	1.00
Stensland, E. B.....	5.00	Wagner, Prof. George.....	10.00
Stehr, W. H. Jr.....	3.00	Wald, C. J.....	5.00
Steve, Prof. Wm. F.....	5.00	Warner, Ernest N.....	15.00
Stevens, Miss Amelia.....	25.00	Waterman, H. G.....	10.00
Storey, O. W.....	5.00	Welch, E. R.....	5.00
Strand, Olaf.....	3.00	West, J. P.....	5.00
Straus Printing Co.....	10.00	West Kentucky Coal Co...	5.00
Stroud, Ray M.....	5.00	Weston, Dr. Frank.....	5.00
Struck, H. J.....	5.00	White, John C.....	5.00
Struck & Irwin Fuel Co....	10.00	Whyte, W. F.....	3.00
Suhr, F. W.....	10.00	Wilder, Mrs. J. W.....	5.00
Suhr, John.....	10.00	Wilkie, H. M.....	10.00
Sweet, C. V.....	2.50	Winkley, F. D.....	25.00
Swenson, Wm.....	5.00	Winslow, C. P.....	5.00
Taylor, Edwin L.....	5.00	Wis. Advertising Co.....	5.00
Taylor, F. B.....	5.00	Witte, E. E.....	5.00
Taylor, W. F.....	5.00	Wootton, Frank M.....	5.00
Teckemeyer, W. J.....	5.00	Yawkey-Crowley Lbr. Co...	15.00
Tenney, Chas. H.....	10.00	Ylvisaker, Rev. S. C.....	3.00
Thomas, Herbert H.....	10.00	Young, E. J.....	10.00
Thomas, L. F.....	5.00	Zantrow, H. C.....	3.00
Thompson, Harvey L.....	5.00	Zdanowicz, Prof. C. D.....	5.00
Thwaites, Jessie T.....	10.00	Zimmerman, Hon. A. G....	5.00
Toebaas, O. T.....	10.00		
Tormey, Dr. T. W.....	15.00		
Tottingham, Prof. W. E....	2.00	Total General Subscrip-	
Tough, Edward.....	5.00	tion for 1928.....	\$3,444.00

Madison Park
and
Pleasure Drive Association

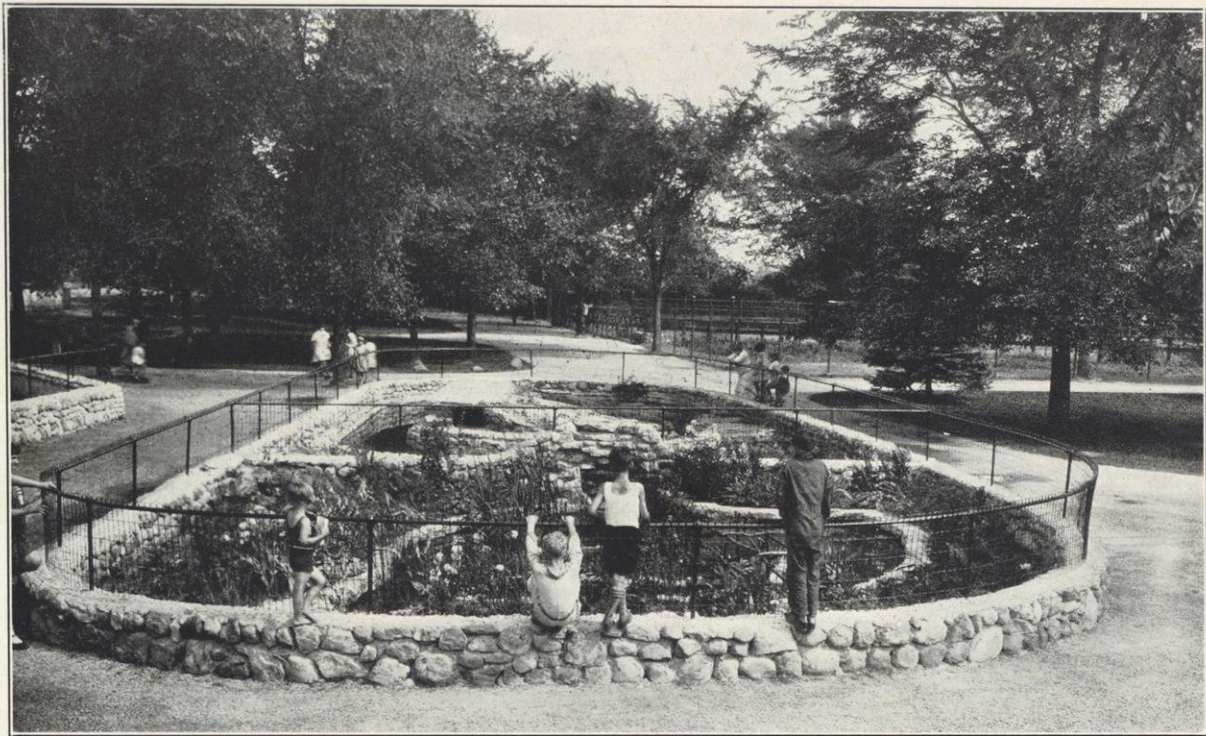
Cash and Disbursements
Park Budget

1928

STATEMENT OF RECEIPTS AND EXPENDITURES
PARKS AND PLAYGROUNDS
January 1-December 31, 1928

<i>Receipts</i>	<i>Receipts</i>	<i>Budget Estimate</i>	
Stevens Field.....	\$ 452.00	\$ 600.00	
Municipal Golf Course.....	12,966.00	7,989.00	
Vilas Park Canoe Livery.....	3.29		
McEvilly & Nye Contract.....	2,410.60		
Franklin Street Boat House.....	148.23		
Rent of Burr Jones Field.....	150.00		
Sale of Deer Horns.....	10.00		
Tenney Park Bath House—Suit Rental.....	398.45	3,500.00	
Yahara Boat House Rental.....	88.75		
Brittingham Boat Storage.....	484.40		
Brittingham Bath—Suit Rental.....	27.90		
Olin Park Tourist Camp Fees.....	1,516.50		
Care of Trees, Assessments.....	5,716.60	4,789.00	
	\$24,372.72	\$16,878.00	
Excess of Receipts over Budget Estimate.....			\$7,494.72
<i>Expenditures</i>	<i>Expenditures</i>	<i>Appropriation</i>	
General Repairman—All Parks.....	\$ 2,420.00	\$ 2,420.00	
Celebrations.....	130.14	200.00	
Public Piers.....	408.74	300.00	
Stevens Field.....	2,477.29	2,320.00	
Municipal Golf Course.....	7,358.55	7,989.00	
Henry Vilas Park.....	15,977.71	10,517.00	
Henry Vilas Park Lavatory.....	445.44	577.20	
Olin Park.....	4,870.17	5,673.60	
Tenney Park.....	12,292.26	12,090.00	
Tenney Park Bath House.....	3,110.45	3,343.90	
Tenney Park Lavatory.....	619.40	629.00	
Brittingham Park.....	8,696.61	7,434.50	
Brittingham Park Boat House.....	1,389.60	1,234.20	
Brittingham Park Bath House.....	2,985.70	3,535.40	
Lake Front Park.....	4,070.64	2,037.30	
Barry Park.....	1,802.10	1,610.00	
E. Washington Boulevard.....	3,606.32	2,660.00	
Franklin Street Boat House.....	148.47	300.00	
Owen Parkway.....	459.95	250.00	
Orton Park.....	660.92	530.00	
Burrows Park.....	1,251.69	1,025.00	

Hillington Park.....	57.76	100.00	
Willows.....	486.81	568.00	
South Madison Boulevard.....	321.35	1,020.00	
Outside Drives.....	3,000.00	3,000.00	
Lake Front Extension.....	15.00	850.00	
Wingra Creek (Dredging).....	3,036.80	
Murphy's Creek.....	131.69	
Street Ends.....	255.60	200.00	
Burr Jones Field.....	1,126.08	500.00	
Olive Jones Field.....	100.00	
Maple Park.....	185.68	200.00	
B. B. Clarke Park.....	200.00	
Evergreen Park.....	8.68	25.00	
Spooner Street Viaduct.....	25.00	
Commonwealth-Hollister.....	75.00	
Fair Oaks Playground.....	34.25	200.00	
Washington Oval.....	278.12	200.00	
Morrison Street Park.....	17.10	50.00	
Elmside Boulevard.....	50.00	
Kendall Park.....	64.92	
Vilas Boulevard.....	167.71	
Washington Playground.....	70.17	
Olbrich Park.....	310.33	
Spaight Street Park.....	104.47	
Edgewood Drive.....	5.19	
West Side High School Playground.....	124.50	
Quarantine.....	4.24	
Special Life Guards—Mendota.....	225.00	
Administration.....	3,987.05	4,472.00	
Wingra Locks.....	6,018.89	2,175.00	
Yahara Locks.....	869.02	5,700.00	
Outdoor Camp.....	4,695.84	6,000.00	
Winter Sports (Skating).....	2,069.53	3,500.00	
General Park Equipment.....	5,249.74	5,981.00	
City Forester.....	8,329.50	7,489.00	
Vilas Park Zoo.....	26,646.17	27,784.87	
Madison Parks Foundation.....	107.50	
	<u>\$140,766.84</u>	<u>\$137,140.97</u>	
Excess of Expenditures over Budget Estimate.....			<u>3,625.87</u>
Excess of Revenues over Expenditures.....			<u>\$3,868.85</u>



New Reptile Yard—Vilas Park Zoo

Animals in the Zoological Collection at Vilas Park Zoo

July 1, 1929

MAMMALS

<i>Carnivora:</i>	<i>Specimens</i>
European Bear, Russian Brown . . . (Ursus arctos)	2
Grizzly Bear (Ursus horribilis)	2
Black Bear (Ursus americanus)	6
Cinnamon Bear (Ursus americanus namomum)	4
Polar Bear	2
Gray Wolf (Canis nubilus)	2
Coyote—Prairie Wolf (Canis latrans)	1
Brush Wolf (Canis)	1
Red Fox (Vulpes fulva)	2
Gray Fox (Orocyon Virginianus)	3
American Badger (Taxidea taxus)	5
Raccoon (Procyon lotor)	18
African Lion (Felis leo)	2
African Leopard (Felis pardus)	2
Jaguar (Felis onca)	1
Leopard Jaguar Hybrid (Felis pardus-onca)	1
American Mountain Lion (Felis hippolestes)	1
Bay Lynx (Lynx ruffus)	1
<i>Primates:</i>	
Orang Utan (Simia satyrus)	1
White-handed Gibbon (Hylobates lar)	1
Hamadryas Baboon (Papio hamadryas)	3
Mandrill Baboon (Papio sphinx)	1
Anubis Baboon (Papio anubis)	1
Sphinx Baboon (Papio sphinx)	1
Pig-tailed Monkey (Macaca nemestrina)	1
Javan Macaque (Macaca mordax)	4
Mona Monkey (Lasiopyga mona)	1
Sooty Mangabey (Cercopithecus fuliginosus)	2
Blueball Monkey (Callithrix moloch)	1
Rhesus Monkey (Macaca rhesus)	8
Cinnamon Capuchin (Cebus fatuellus)	1
Margarita Capuchin (Cebus margaritae)	1
White-throated Capuchin (Cebus capucinus)	1
Horned Capuchin (Capuchin apella)	1
Ruffed Lemur (Lemur variegatus)	2
African Green Monkey	2
<i>Rodentia:</i>	
Black Squirrel (Sciurus carolinensis)	1
Fox Squirrel (Sciurus vulpinus)	2
White Squirrel (Sciurus carolinensis)	1
Canadian Porcupine (Erethizon dorsatus)	1
Guinea Pig (Cavia porcellus)	3
Domestic Rabbit (Oryctolagus cuniculus)	6
<i>Masupialia:</i>	
Opossum (Didelphis virginiana)	1

Artiodactyla:

Llama.....	(Lama glama).....	2
Sacred White Fallow Deer.....	(Dama vulgaris).....	6
Japanese Deer.....	(Sika nippon).....	1
European Red Deer.....	(Cervus elaphus).....	2
Virginia Deer.....	(Odocoileus virginianus).....	4
American Elk.....	(Cervus canadensis).....	8
American Bison.....	(Bison bison).....	8
Zebu.....	(Bos indicus).....	2
Tahr.....	(Hermitragus jemlahicus).....	2
Aoudad.....	(Ammotragus lervia).....	2
Domestic Milk Goat.....	(Europe).....	8
Indian Pony.....		1
Chapman Zebra.....	(Equus Burchelli Chapmani).....	1
South American Tapir.....	(Tapirus americanus teeastris).....	1

Proboscidea:

Indian Elephant.....	(Elephas indicus).....	1
----------------------	------------------------	---

BIRDS

Ciconiiformes:

American White Pelican.....	(Pelecanus erythrorhynchos).....	1
Great Blue Heron.....	(Ardea herodias).....	3
Black-crowned Night Heron.....	(Nycticorax nycticorax naervius).....	4

Anseriformes:

Mallard Duck.....	(Anas platyrhynchos).....	12
Black Duck.....	(Anas rubripes).....	6
Canada Goose.....	(Branta canadensis).....	2
Canada Black Brent.....	(Branta canadensis).....	1
African Goose.....	(Anser gabeli).....	2
Whistling Swan.....	(Olo columbianus).....	1
European Mute Swan.....	(Cyanus olor).....	1

Falconiformes:

Turkey Vulture.....	(Cathartes aura).....	2
Golden Eagle.....	(Aquila chrysaetos).....	2
American Bald Eagle.....	(Haliaeetus leucocephalus).....	2
Red-tailed Chicken Hawk.....	(Buteo borealis).....	3

Galliformes:

Silver Pheasant.....	(Gennaeus nyctemerus).....	2
Lady Amherst's Pheasant.....	(Chrysolophus amherstiae).....	2
Golden Pheasant.....	(Chrysolophus pictus).....	5
Ringneck Pheasant.....	(Phasianus torquatus).....	14
Indian Peafowl.....	(Pavo cristatus).....	1
English Game Bantam.....		24

Gruiformes:

Demoiselle Crane.....	(Anthropoides virgo).....	2
-----------------------	---------------------------	---

Charadriiformes:

Herring Gull.....	(Larus argentatus).....	6
Mourning Dove.....	(Zenaidura macroura).....	2
Ringed Turtle-Dove.....	(Streptopelia risoria).....	4
Wonga-Wonga Pigeon.....	(Leucosarcia picata).....	1
Bleeding Heart Pigeon.....	(Phlogaenas luzonica).....	4
White King Pigeon.....		3
White Owl Pigeon.....		2
White Fan-tail Pigeon.....		1
Carrier Pigeon.....		3
Pearlneck Dove.....		2

Psittaciformes:

Australian Shell Paroquet.....	(<i>Melopsittacus undulatus</i>).....	9
Blue Mountain Lory.....	(<i>Malay luri</i>).....	1
Australian Magpie.....	(<i>Gymnor hinatibicen</i>).....	1
Chinese Magpie.....	1
Red Macaw.....	(<i>Ara chloroptera</i>).....	1
Blue Macaw.....	(<i>Ara ararauna</i>).....	1
Sulphur-crested Cockatoo.....	(<i>Cacatoes galerita</i>).....	2
Rosae Cockatoo.....	(<i>Cacatoes roscicapilla</i>).....	4
Necked Eye.....	2

Coraciformes:

Giant Kingfisher.....	(<i>Dacelo gigas</i>).....	1
Screech Owl.....	(<i>Otus asio</i>).....	2
Great Horned Owl.....	(<i>Bubo virginianus</i>).....	9
Monkey-faced Owl.....	4

Passeriformes:

Carion Crow.....	(<i>Corvus frugivorus</i>).....	2
Black Bird.....	(<i>Sturnus vulgaris</i>).....	6
Redwing Black Bird.....	6
Blue Jay.....	(<i>Cyanocetta cristata</i>).....	8
Redcrested Cardinal.....	(<i>Paroaria cuculata</i>).....	1
Gray Java Sparrow.....	4
White Java Sparrow.....	2

REPTILES

Alligator.....	(<i>Alligator mississippiensis</i>).....	26
----------------	--	----

FISH

The number and variety of fish differ considerably during different seasons of the year. The following varieties are on exhibition some time during the year. On this date we have an extra fine collection of native specimen on display:

Large Mouth Black Bass.....	(<i>Micropterus salmoides</i>)
Calico Bass.....	(<i>Pomoxis sparoides</i>)
White Bass.....	(<i>Roccus chrysops</i>)
Rock Bass.....	(<i>Ambloplites rupestris</i>)
Yellow Perch.....	(<i>Perca flarescens</i>)
Common Sunfish.....	(<i>Eupomotis gibbosus</i>)
Blue Gill.....	(<i>Lepomis pallidus</i>)
Wall-eyed Pike.....	(<i>Stizostedion vitreum</i>)
Muskallung.....	(<i>Esox masquinongy</i>)
Great Northern Pike.....	(<i>Esox immaculatis</i>)
Pickereel.....	(<i>Esox lucius</i>)
Rainbow Trout.....	(<i>Salmo irideus</i>)
Common Chub.....	(<i>Semotilus atromaculatus</i>)
Carp.....	(<i>Cyprinus carpes</i>)
Buffalo.....	(<i>Ictiobus cyprinella</i>)
Black Bullhead.....	(<i>Ameinrus melas</i>)
Channel Cat.....	(<i>Ictalurus punctatus</i>)
Dog Fish.....	(<i>Haleocommorphi</i>)
Long Nosed Gar.....	(<i>Gingly modi</i>)
Tropical Fish.....	(Several varieties)
Gold Fish.....	(Several varieties)
6 large mounted specimen of Atlantic Ocean Fish.	

Conchology:

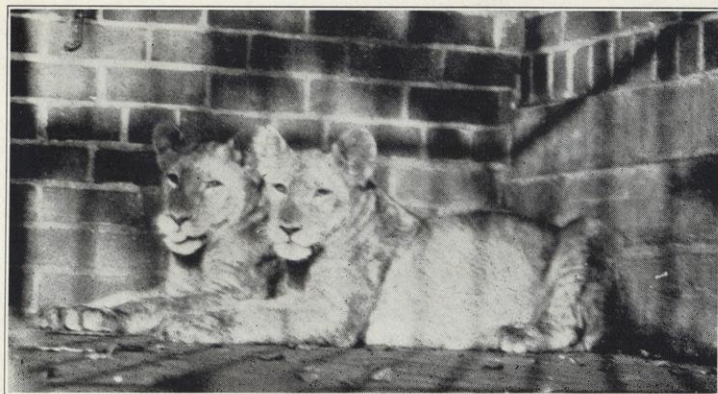
A splendid collection of fresh and saltwater Shells:
200 varieties carefully named.

Length of Lake and Park Drives

	Miles
Lake Mendota Drive	
University Drive.....	1
Bay Road and Eagle Heights.....	2
Eagle Heights to Merrill Springs.....	1.6
Mendota Beach.....	.7
Capital Avenue.....	.6
Sumac Drive.....	1.3
Total miles.....	— 7.2
Hammersley Road.....	.9
Owen Parkway.....	1.5
Farwell Drive	
Lakewood Boulevard.....	1.5
Maple Bluff and Woodward's Grove.....	2.8
State Hospital Drive.....	1
Woodward Farm Road.....	.6
Total miles.....	— 5.9
Tenney Park	
Thornton Avenue.....	1
Sherman Avenue.....	.2
Marston Avenue.....	.5
Total miles.....	— 1.7
Lake Front Park	
Lake Drive.....	.5
Total miles.....	— .5
Olbrich Purchase	
Atwood Avenue.....	1.3
Brittingham Park	
Brittingham Drive.....	.7
Brittingham Boulevard.....	.8
Total miles.....	— 1.5
Henry Vilas Park	
Elm Court.....	.1
Burr Oak Drive.....	.7
Meadow Drive.....	.5
Wingra Heights Drive.....	.4
Fenway Drive.....	1
Edgewood.....	.5
Total miles.....	— 3.2
West Washington Boulevard.....	1
Total miles.....	— 24.7

Park Areas and Water Frontage

Parks	Acres	Water Frontage
Barry Park.....	1.4	
Breese J. Stevens Athletic Field.....	4.5	
Brittingham Park.....	27	4,370 ft.
Burr Jones Field (new).....	3.39	
Burrows Park.....	12	550 ft.
East Washington Ave. Parkway.....	10	
Elmside and Lake Front Park.....	5.1	2,000 ft.
Franklin Street Park (City Boathouse).....	.2	70 ft.
Henry Vilas Park.....	62.6	6,000 ft.
Highlands.....	11	
Hillington Park.....	.8	
Kendall Park.....	1.5	
Lake Edge Park.....	4.5	75 ft.
Olbrich purchase.....	25	3,610 ft.
Olin Park (formerly Monona).....	30	1,350 ft.
Olive Jones Field.....	1.5	
Orton Park.....	3.6	
Owen Parkway.....	6	
Quarry Area.....	23.67	
South Madison Boulevard.....	5	4,800 ft.
Spring Harbor.....	1	270 ft.
Spaight Street Park.....	1.5	600 ft.
Tenney Park.....	44.2	3,800 ft.
Washington Oval.....	.9	
Wingra Monona Parkway.....	33	6,000 ft.
Yahara Parkway.....	16.9	7,200 ft.
Yahara River to Dunning Street on Lake Monona.....	4.8	1,750 ft.
Totals.....	341.06	42,445 ft.



Lion Cubs—Vilas Park Zoo

