

Friends of Wisconsin State Parks

2018 CALENDAR



The mission of the Friends of Wisconsin State Parks is to **preserve, protect, promote** and **enhance** Wisconsin's state parks, forests, trails and recreation areas for future generations. FWSP accomplishes this mission by strengthening its network of local Friends groups and by enhancing the relationship between the DNR and partner groups.



Letter from the President

BILL ZAGER



The Friends of Wisconsin State Parks are honored to partner once again with *Wisconsin Natural Resources* magazine to include the 2018 FWSP calendar with the December issue. The photographs in this calendar are the winning images from the 2017 FWSP photo contest, with entries offered in large numbers by users of Wisconsin's state parks, trails, forests and

recreation areas. Only a few of the contest photos can be selected for use in the annual calendar, but they are all winners and can be viewed on our website at FWSP.org.

Friends of Wisconsin State Parks are very proud of the support we and our local Friends groups have given to help accomplish our mission to "preserve, protect, promote and enhance" these state park system properties over the past year. We encourage everyone to help our state properties by enjoying them and promoting them as part of your healthy lifestyle!

To maintain the level of the state park system that we have learned to enjoy, please consider a tax-deductible donation to FWSP to help support these beautiful properties and the programming offered at each. Some would say we are lucky to have this great state park system, but it is really a credit to the forward thinking of our Wisconsin leaders to develop and maintain state properties that are an envy across the nation. If your local state park system property doesn't have a Friends group, we encourage you to rally local users to start one, or contact FWSP and volunteer as an individual to promote and maintain the property.

Let's all work together to preserve, protect, promote, enhance and enjoy these great jewels of Wisconsin in 2018!

We hope to see you this year!

Friends groups and individuals contribute their time, energy and talents to preserve and improve the state properties they cherish. You can support this work by joining a Friends group or volunteering as an individual. See the back of this calendar for a list of all FWSP Friends groups. We hope to see you in 2018!

2017 Gold Seal Award Winners

The Friends of Wisconsin State Parks would like to congratulate the 2017 Gold Seal Award winners. Every year, state park visitors vote for their favorite parks in 10 different categories. These parks are then honored at the FWSP annual meeting and awards banquet in November.

1. Best state park system property for winter recreating: **Hartman Creek State Park**
2. Best state park system property for a short hike with children: **Peninsula State Park**
3. Best state park system property for trail to ride horses with a group: **Wildcat Mountain State Park**
4. Most scenic state park system picnic area: **Devil's Lake State Park**
5. Best state park system office flower garden: **Governor Thompson State Park**
6. Best state park system property for star gazing: **Newport State Park**
7. Best state park fishing pier: **Wyalusing State Park**
8. Best state park system property to take nature photos: **Governor Dodge State Park**
9. Best state park family beach area: **Whitefish Dunes State Park**
10. Best view of the sunrise in a state park system campground: **Kohler-Andrae State Park**

Don't forget to vote for your favorite parks in 2018.

Friends of Wisconsin State Parks photo contest

Photographs from the Friends' photo contest are used to produce the annual FWSP calendar and may be used in other DNR publications, presentations, websites and displays. Your photos help promote the Wisconsin State Park System and all seasons are needed. You can submit your photos throughout the year.

The submission deadline for the 2018 calendar is Aug. 31, 2018. For more information, visit FWSP.org.



Above: Copper Falls State Park
Photo by **JASON SMITH**

It's a new year!

The Friends of Wisconsin State Parks offer a convenient way to purchase state park admission stickers and state trail passes as part of gift packages through the Friends online store at FWSP.org. You also can renew your membership or join a Friends group near you. January is a great time to take photos for FWSP's annual photo contest or to check out a candlelight ski or hike.



LAURA FROH

Kettle Moraine State Forest-Southern Unit

Park events

Visit dnr.wi.gov and search "Get Outdoors" for a complete list of nature programs and events happening in the parks.

JANUARY 2018

SUNDAY	MONDAY	TUESDAY	WEDNESDAY	THURSDAY	FRIDAY	SATURDAY
	1 Take a first day hike. New Year's Day  Full Moon	2	3	4 Keep backyard birdfeeders full.	5	6
7	8  Last Quarter Moon	9	10	11	12	13
14	15 Martin Luther King Jr. Day  New Moon	16	17 Bald eagle viewing.	18	19	20 Free Fishing Weekend. See dnr.wi.gov .
21 Free Fishing Weekend. See dnr.wi.gov .	22	23	24  First Quarter Moon	25	26	27
28	29	30	31 Be aware of ice safety.  Full Moon		DECEMBER 2017 S M T W T F S 1 2 3 4 5 6 7 8 9 10 11 12 13 14 15 16 17 18 19 20 21 22 23 24 25 26 27 28 29 30 31	FEBRUARY 2018 S M T W T F S 1 2 3 4 5 6 7 8 9 10 11 12 13 14 15 16 17 18 19 20 21 22 23 24 25 26 27 28

Support the friends of Wisconsin State Parks, purchase state park sticker packages online at FWSP.org.



Above: Aztalan State Park
Photo by **WENDY MURKVE**

Enjoy winter!

Friends groups sponsor many winter candlelight events. These may include lighted trails for classic- and skate-style cross-country skiing, snowshoeing and hiking. There are usually fires for warming up and the Friends groups may sell concessions with proceeds going to benefit the parks. The Friends may also help put on cross-country ski clinics, races and other special events and assist park staff in grooming trails.



Governor Dodge
State Park

HALEY WEISERT

Park events

Visit dnr.wi.gov and search "Get Outdoors" for a complete list of nature programs and events happening in the parks.

FEBRUARY 2018

SUNDAY	MONDAY	TUESDAY	WEDNESDAY	THURSDAY	FRIDAY	SATURDAY
JANUARY 2018 S M T W T F S 1 2 3 4 5 6 7 8 9 10 11 12 13 14 15 16 17 18 19 20 21 22 23 24 25 26 27 28 29 30 31	MARCH 2018 S M T W T F S 1 2 3 4 5 6 7 8 9 10 11 12 13 14 15 16 17 18 19 20 21 22 23 24 25 26 27 28 29 30 31			1	2	3
4	5	6 Squirrels mating.	7 Last Quarter Moon	8	9 Groundhog Day	10
11	12 Black bear cubs being born.	13	14 Valentine's Day Ash Wednesday	15 New Moon	16	17
18	19 Presidents' Day	20	21	22	23 First Quarter Moon	24 Great horned owls nesting.
25	26	27	28			

Support the friends of Wisconsin State Parks, purchase state park sticker packages online at FWSP.org.



Above: Kettle Moraine State
Forest-Southern Unit
Photo by **LAURA FROH**

Join a local Friends group!

Friends members and volunteers help park staff with spring cleaning projects, including trail brushing and cleanup, repairing fences, cleaning up park grounds and making information signs. The Friends also assist with some carpentry projects such as building birdhouses, constructing kiosks, repairing benches and picnic tables, and cutting and stocking firewood. Many Friends groups sell firewood with proceeds going back to the parks.



Kohler-Andrae State Park

EVELYN REGAN

Park events

Visit dnr.wi.gov and search "Get Outdoors" for a complete list of nature programs and events happening in the parks.

MARCH 2018

SUNDAY	MONDAY	TUESDAY	WEDNESDAY	THURSDAY	FRIDAY	SATURDAY
FEBRUARY 2018 S M T W T F S 1 2 3 4 5 6 7 8 9 10 11 12 13 14 15 16 17 18 19 20 21 22 23 24 25 26 27 28	APRIL 2018 S M T W T F S 1 2 3 4 5 6 7 8 9 10 11 12 13 14 15 16 17 18 19 20 21 22 23 24 25 26 27 28 29 30			1 Full Moon	2 Fishing licenses on sale soon.	3
4	5	6	7 Bald eagles migrating.	8	9	10
11 Daylight Savings Time Begins	12	13	14	15	16 Last Quarter Moon	17 St. Patrick's Day New Moon
18	19	20 Spring Begins	21	22 Maple sap running soon.	23	24 First Quarter Moon
25 Palm Sunday	26	27 Robins and bluebirds arriving.	28	29	30 Good Friday Passover Begins at Sundown Full Moon	31

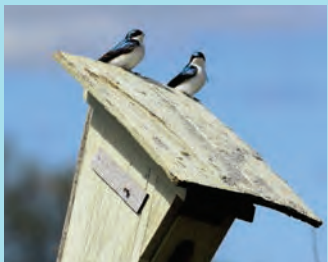
Support the friends of Wisconsin State Parks, purchase state park sticker packages online at FWSP.org.



Above: Potawatomi State Park
Photo by **TIM SWEET**

Celebrate Earth Day!

FWSP hosts several Work*Play*Earth Day events in April and May. Volunteers at these events help the parks by cleaning up picnic and campground areas, planting trees, clearing park trails and removing invasive species such as garlic mustard. The Friends groups typically provide lunches to say thanks to everyone who has volunteered for the day. Trail-building crews also are out getting the park trails ready for summer users. Many volunteers even "adopt a trail" and do regular trail work throughout the year.



ROBERT MALINOWSKI

Governor Nelson
State Park

Park events

Visit dnr.wi.gov and search "Get Outdoors" for a complete list of nature programs and events happening in the parks.

APRIL 2018

SUNDAY	MONDAY	TUESDAY	WEDNESDAY	THURSDAY	FRIDAY	SATURDAY
1 Easter April Fools' Day	2	3	4	5 Canada geese and bald eagles nesting.	6	7
8 Last Quarter Moon	9	10	11	12 Walleyes spawning.	13	14
15 New Moon	16	17 Tax Day	18	19	20	21
22 Earth Day First Quarter Moon	23	24	25 Crappies moving into shallow water.	26	27 Arbor Day	28
29 Full Moon	30				MARCH 2018 S M T W T F S 1 2 3 4 5 6 7 8 9 10 11 12 13 14 15 16 17 18 19 20 21 22 23 24 25 26 27 28 29 30 31	MAY 2018 S M T W T F S 1 2 3 4 5 6 7 8 9 10 11 12 13 14 15 16 17 18 19 20 21 22 23 24 25 26 27 28 29 30 31

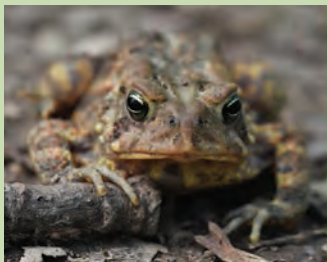
Support the friends of Wisconsin State Parks, purchase state park sticker packages online at FWSP.org.



Above: Amnicon Falls State Park
Photo by **TOM MORTENSON**

Learn about nature!

In May, the Friends of Wisconsin State Parks announce the winners of the Incentive Grants, which are awarded to local Friends groups to support naturalist programs. The grants help provide for some of the new educational materials at the parks and nature centers. May also is a popular time for school field trips, and the Friends help the parks by presenting programs, conducting workshops and leading guided nature walks for school groups.



MARK BURNS

Kettle Moraine State Forest

Park events

Visit dnr.wi.gov and search "Get Outdoors" for a complete list of nature programs and events happening in the parks.

MAY 2018

SUNDAY	MONDAY	TUESDAY	WEDNESDAY	THURSDAY	FRIDAY	SATURDAY
		1	2	3	4	5 General inland fishing season opener.
6	7 Last Quarter Moon	8	9 Look for morel mushrooms.	10	11	12
13 Mother's Day	14 Orioles arriving.	15 Ramadan Begins at Sundown New Moon	16	17	18	19 Lilacs blooming. Armed Forces Day
20	21 First Quarter Moon	22	23 Monarch butterflies arriving.	24	25	26
27	28 Memorial Day	29	30	31 Deer fawns being born.	APRIL 2018 S M T W T F S 1 2 3 4 5 6 7 8 9 10 11 12 13 14 15 16 17 18 19 20 21 22 23 24 25 26 27 28 29 30	
					JUNE 2018 S M T W T F S 1 2 3 4 5 6 7 8 9 10 11 12 13 14 15 16 17 18 19 20 21 22 23 24 25 26 27 28 29 30	

Support the friends of Wisconsin State Parks, purchase state park sticker packages online at FWSP.org.



Above: Potawatomi State Park
Photo by **GABRIELE WILLIAMS**

Enjoy the night!

During summer, Universe in the Park programs are scheduled at parks around the state for learning about and viewing the night sky. Friends groups often plan additional events to coincide with these programs, including nightly campfire talks, sing-a-longs and visits by Smokey Bear. The Friends may bring in singers and musicians or even perform themselves. Campground hosts help with these events and other park projects and are available to make sure campers enjoy their stay.



DEBRA COOK

High Cliff State Park

Park events

Visit dnr.wi.gov and search "Get Outdoors" for a complete list of nature programs and events happening in the parks.

JUNE 2018

SUNDAY	MONDAY	TUESDAY	WEDNESDAY	THURSDAY	FRIDAY	SATURDAY
<p>MAY 2018</p> <p>S M T W T F S</p> <p>1 2 3 4 5</p> <p>6 7 8 9 10 11 12</p> <p>13 14 15 16 17 18 19</p> <p>20 21 22 23 24 25 26</p> <p>27 28 29 30 31</p>	<p>JULY 2018</p> <p>S M T W T F S</p> <p>1 2 3 4 5 6 7</p> <p>8 9 10 11 12 13 14</p> <p>15 16 17 18 19 20 21</p> <p>22 23 24 25 26 27 28</p> <p>29 30 31</p>				<p>1</p> <p>Smallmouth bass spawning.</p>	<p>2</p> <p>Free Fun Weekend. See dnr.wi.gov.</p> <p>National Trails Day</p>
<p>3</p> <p>Free Fun Weekend. See dnr.wi.gov.</p>	4	5	<p>6</p> <p>Last Quarter Moon</p>	<p>7</p> <p>Watch for baby loons.</p>	8	9
10	11	12	<p>13</p> <p>New Moon</p>	<p>14</p> <p>Flag Day</p>	15	16
<p>17</p> <p>Father's Day</p>	18	19	<p>20</p> <p>First Quarter Moon</p>	<p>21</p> <p>Summer Begins</p>	<p>22</p> <p>Lightning bugs are out.</p>	23
24	25	26	<p>27</p> <p>Big brown bats giving birth to offspring.</p> <p>Full Moon</p>	28	29	30

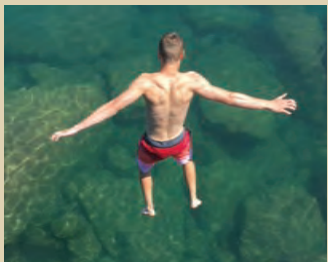
Support the friends of Wisconsin State Parks, purchase state park sticker packages online at FWSP.org.



Above: Point Beach State Forest
Photo by KRIS VAN HANDEL

Explore the outdoors!

During summer, many Friends groups sell concessions and rent canoes, kayaks, boats and bicycles at the parks. Firewood and ice also are often sold by the Friends with proceeds staying at the property. If you're exploring the parks and need equipment or supplies, make sure to stop by the park concessions. Wisconsin's state parks and forests also offer many reservable shelters and are popular places to hold family reunions, birthday parties and weddings.



MARTY GUSTAFSON

Big Bay State Park

Park events

Visit dnr.wi.gov and search "Get Outdoors" for a complete list of nature programs and events happening in the parks.

JULY 2018

SUNDAY	MONDAY	TUESDAY	WEDNESDAY	THURSDAY	FRIDAY	SATURDAY
1	2	3	4 Independence Day	5	6 Last Quarter Moon	7
8	9	10	11	12 Goldfinches gathering thistle down. New Moon	13	14
15	16	17 Steelhead moving into Lake Michigan tributaries.	18	19 First Quarter Moon	20	21
22	23	24	25	26	27 Full Moon	28 Deer antlers nearing peak size.
29	30	31			JUNE 2018 S M T W T F S 1 2 3 4 5 6 7 8 9 10 11 12 13 14 15 16 17 18 19 20 21 22 23 24 25 26 27 28 29 30	AUGUST 2018 S M T W T F S 1 2 3 4 5 6 7 8 9 10 11 12 13 14 15 16 17 18 19 20 21 22 23 24 25 26 27 28 29 30 31

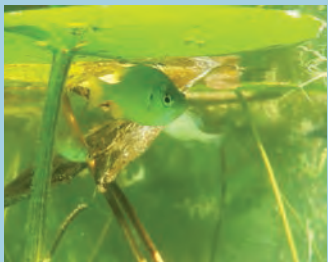
Support the friends of Wisconsin State Parks, purchase state park sticker packages online at FWSP.org.



Above: Harrington Beach
State Park
Photo by **DIANE JOHNSON**

Don't forget the camera!

Wisconsin's state parks, forests, recreation areas and trails are popular places for special events such as marathons, bike competitions, triathlons and endurance races. Friends groups help park staff plan and organize these events. The end of August also brings the FWSP photo contest to a close. Don't miss your chance to submit your best photos or to vote for your favorite parks for FWSP's Gold Seal awards. Winning photos appear in the FWSP annual calendar.



MARK BURNS

Hartman Creek State Park

Park events

Visit dnr.wi.gov and search "Get Outdoors" for a complete list of nature programs and events happening in the parks.

AUGUST 2018

SUNDAY	MONDAY	TUESDAY	WEDNESDAY	THURSDAY	FRIDAY	SATURDAY
<p>JULY 2018</p> <p>S M T W T F S</p> <p>1 2 3 4 5 6 7</p> <p>8 9 10 11 12 13 14</p> <p>15 16 17 18 19 20 21</p> <p>22 23 24 25 26 27 28</p> <p>29 30 31</p>	<p>SEPTEMBER 2018</p> <p>S M T W T F S</p> <p>1</p> <p>2 3 4 5 6 7 8</p> <p>9 10 11 12 13 14 15</p> <p>16 17 18 19 20 21 22</p> <p>23 24 25 26 27 28 29</p> <p>30</p>		1	2 Wisconsin State Fair begins.	3	4 Last Quarter Moon
5	6	7 Blackberries and elderberries ripening.	8	9	10	11 New Moon
12	13	14	15 Monarch butterflies begin migration south.	16	17	18 First Quarter Moon
19	20	21	22	23	24	25 Hummingbirds migrating.
26 Full Moon	27	28	29	30	31 FWSP photo contest deadline.	

Support the friends of Wisconsin State Parks, purchase state park sticker packages online at FWSP.org.



Above: Devil's Lake State Park
Photo by NATASHA BOUCHETTE

Thank you volunteers!

The annual Friends of Wisconsin State Parks Fall Jamboree is held in early September. The jamboree gives FWSP and park staff the opportunity to thank all the Friends, campground hosts and volunteers who have helped out at the parks throughout the year. All who have volunteered during the year are invited to attend this fun, educational and social gathering. There are campfires, dinners, entertainment, informative discussions and more.



JASON SMITH

Willow River State Park

Park events

Visit dnr.wi.gov and search "Get Outdoors" for a complete list of nature programs and events happening in the parks.

SEPTEMBER 2018

SUNDAY	MONDAY	TUESDAY	WEDNESDAY	THURSDAY	FRIDAY	SATURDAY
<p>AUGUST 2018</p> <p>S M T W T F S</p> <p>1 2 3 4</p> <p>5 6 7 8 9 10 11</p> <p>12 13 14 15 16 17 18</p> <p>19 20 21 22 23 24 25</p> <p>26 27 28 29 30 31</p>	<p>OCTOBER 2018</p> <p>S M T W T F S</p> <p>1 2 3 4 5 6</p> <p>7 8 9 10 11 12 13</p> <p>14 15 16 17 18 19 20</p> <p>21 22 23 24 25 26 27</p> <p>28 29 30 31</p>					1
<p>2</p> <p>Last Quarter Moon</p>	<p>3</p> <p>Labor Day</p>	4	5	<p>6</p> <p>Sumac leaves showing signs of red.</p>	7	8
<p>9</p> <p>Rosh Hashanah Begins at Sundown</p> <p>Grandparents Day</p> <p>New Moon</p>	10	<p>11</p> <p>White-tailed bucks shedding velvet.</p> <p>Patriot Day</p>	12	13	14	15
<p>16</p> <p>First Quarter Moon</p>	17	<p>18</p> <p>Yom Kippur Begins at Sundown</p>	19	20	21	22
<p>23</p> <p>Autumn Begins</p>	24	25	<p>26</p> <p>Oaks are raining acorns.</p>	27	28	29
<p>30</p> <p>Full Moon</p>						

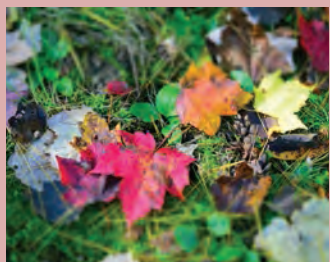
Support the friends of Wisconsin State Parks, purchase state park sticker packages online at FWSP.org.



Above: Brunet Island State Park
Photo by JAMES BUCHHOLZ

Celebrate fall!

Autumn is in full swing in October, and there is no better time to take some amazing photographs of Wisconsin's state parks and forests at peak color. Nature centers are busy with activities and crafts for kids and Friends groups also hold many programs to celebrate fall and Halloween. There may be candlelight hikes with trails lit with jack-o-lanterns, non-scary night events and more.



JILLIAN BARBER

Mirror Lake State Park

Park events

Visit dnr.wi.gov and search "Get Outdoors" for a complete list of nature programs and events happening in the parks.

OCTOBER 2018

SUNDAY	MONDAY	TUESDAY	WEDNESDAY	THURSDAY	FRIDAY	SATURDAY
	1	2 Last Quarter Moon	3	4	5	6
7	8 Columbus Day New Moon	9	10	11	12	13 Fall leaf color show on full display.
14	15	16 First Quarter Moon	17 Snakes disappearing into winter dens.	18	19	20
21	22	23	24 Full Moon	25	26 Black bears begin hibernating.	27
28	29	30 Tundra swans arriving.	31 Halloween Last Quarter Moon	SEPTEMBER 2018 S M T W T F S 1 2 3 4 5 6 7 8 9 10 11 12 13 14 15 16 17 18 19 20 21 22 23 24 25 26 27 28 29 30		NOVEMBER 2018 S M T W T F S 1 2 3 4 5 6 7 8 9 10 11 12 13 14 15 16 17 18 19 20 21 22 23 24 25 26 27 28 29 30

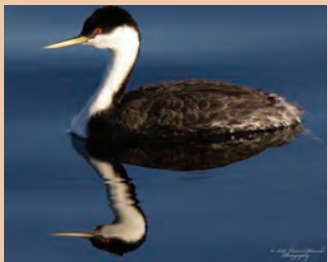
Support the friends of Wisconsin State Parks, purchase state park sticker packages online at FWSP.org.



Photo: Glacial Drumlin State Trail
Photo by **SCOTT SIMONSON**

Support the Friends!

Friends groups raise money to come up with matching funds so they can apply for grants through the Knowles-Nelson Stewardship Program that aid in habitat restoration and the construction of park and trail facilities. Previous Friends projects have included the construction of shelters, playground equipment, boardwalks, trails, accessible cabins and interpretive exhibits, as well as invasive species removal and prairie and woodland restoration. Nov. 15 is the deadline for applying for Friends Stewardship grants.



Lakeshore State Park

Park events

Visit dnr.wi.gov and search "Get Outdoors" for a complete list of nature programs and events happening in the parks.

NOVEMBER 2018

SUNDAY	MONDAY	TUESDAY	WEDNESDAY	THURSDAY	FRIDAY	SATURDAY
OCTOBER 2018 S M T W T F S 1 2 3 4 5 6 7 8 9 10 11 12 13 14 15 16 17 18 19 20 21 22 23 24 25 26 27 28 29 30 31	DECEMBER 2018 S M T W T F S 1 2 3 4 5 6 7 8 9 10 11 12 13 14 15 16 17 18 19 20 21 22 23 24 25 26 27 28 29 30 31			1	2 Get your blaze orange ready.	3
4 Daylight Savings Time Ends	5	6 Election Day	7 New Moon	8	9	10
11 Veterans Day	12	13	14	15 First Quarter Moon	16	17 Opening day of regular gun-deer hunting season.
18	19	20	21	22 Thanksgiving Full Moon	23	24
25	26	27	28 Hang suet and stock birdfeeders.	29 Last Quarter Moon	30	

Support the friends of Wisconsin State Parks, purchase state park sticker packages online at FWSP.org.



Above: Governor Nelson
State Park
Photo by **MICHAEL KNAPSTEIN**

Time to renew!

Just in time for the holidays, the Friends of Wisconsin State Parks offer online sales of state park admission stickers and state trail passes as part of gift packages through the Friends online store at FWSP.org. December also is the perfect time to join or renew your membership with the Friends of Wisconsin State Parks. A list of all local Friends groups is on the back of this calendar. We hope to see you in 2018!



Kettle Moraine State Forest-Northern Unit

Park events

Visit dnr.wi.gov and search "Get Outdoors" for a complete list of nature programs and events happening in the parks.

DECEMBER 2018

SUNDAY	MONDAY	TUESDAY	WEDNESDAY	THURSDAY	FRIDAY	SATURDAY
NOVEMBER 2018 S M T W T F S 1 2 3 4 5 6 7 8 9 10 11 12 13 14 15 16 17 18 19 20 21 22 23 24 25 26 27 28 29 30	JANUARY 2019 S M T W T F S 1 2 3 4 5 6 7 8 9 10 11 12 13 14 15 16 17 18 19 20 21 22 23 24 25 26 27 28 29 30 31					1 2019 Wisconsin state park stickers available.
2 Hanukkah Begins at Sundown	3	4	5	6	7 Pearl Harbor Remembrance Day ● New Moon	8
9	10	11	12	13 Get snowblowers and shovels ready.	14	15 ● First Quarter Moon
16	17	18	19	20	21 Winter Begins	22 ○ Full Moon
23	24	25	26	27	28 Be aware of ice safety.	29 ● Last Quarter Moon
30	31 New Year's Eve	Christmas Day	Kwanzaa Begins			

Support the friends of Wisconsin State Parks, purchase state park sticker packages online at FWSP.org.

Thank you!

Local Friends groups join with the Friends of Wisconsin State Parks and other volunteers to work together to preserve, protect, promote and enhance the state properties around Wisconsin by providing on-the-ground work, monetary support and advocacy for our most special places. Our park properties simply would not be what they are today without the continued help and support of all our Friends and volunteers.

You can join the Friends of Wisconsin State Parks online at FWSP.org

The Friends of Wisconsin State Parks include:

Black River Forest Trail Foundation
(Black River State Forest)
Bong Naturalist Association
(Richard Bong State Recreation Area)
Brillion Nature Study Center Association
(Brillion State Wildlife Area)
Chiwaukee Prairie Preservation Fund
(Chiwaukee Prairie State Natural Area)
Equestrian Friends of Governor Knowles
State Forest
Friends Into Spooner Hatchery (FISH)
Friends of the 400 State Trail
Friends of the Ahnapee State Trail
Friends of Aztalan State Park
Friends of the Badger State Trail
Friends of Big Foot Beach State Park
Friends of the Bird Sanctuary
(Douglas County State Wildlife Area)
Friends of Blue Mound State Park
Friends of Buckhorn State Park
Friends of Cadiz Springs State
Recreation Area
Friends of Capital Springs State
Recreation Area
Friends of Cedarburg Bog State
Natural Area
Friends of the Chippewa River State Trail
Friends of Copper Falls State Park

Friends of Council Grounds State Park
Friends of Crex Meadows State
Wildlife Area
Friends of Devil's Lake State Park
Friends of the Elroy-Sparta State Trail
Friends of the Fox River State Trail
Friends of the Friendship State Trail
Friends of the Glacial Drumlin State Trail
Friends of Governor Dodge State Park
Friends of Governor Thompson
State Park
Friends of the Great River State Trail
Friends of the Hank Aaron State Trail
Friends of Harrington Beach State Park
Friends of Hartman Creek State Park
Friends of Havenwoods State Forest
Friends of High Cliff State Park
Friends of the Horicon Marsh
International Education Center
Friends of Interstate State Park
Friends of the Kettle Moraine State
Forest (Northern Unit)
Friends of Kohler-Andrae State Park
Friends of the La Crosse River State Trail
Friends of Lake Kegonsa State Park
Friends of Lake Wissota State Park
Friends of Lakeshore State Park

Friends of Lapham Peak, Kettle
Moraine State Forest
Friends of the MacKenzie
Environmental Center
Friends of McGilvray Road
(Van Loon State Wildlife Area)
Friends of the Mead/McMillan
State Wildlife Area
Friends of the Military Ridge State Trail
Friends of Mill Bluff State Park and
Ice Age Scientific Reserve
Friends of Mirror Lake State Park
Friends of the Mountain-Bay State Trail
(Marathon County)
Friends of New Glarus Woods State Park
Friends of the Old Abe State Trail
Friends of Pattison and Amnicon
State Parks
Friends of Peninsula State Park
Friends of Perrot State Park
Friends of Pike Lake, Kettle Moraine
State Forest
Friends of Point Beach State Forest
Friends of Potawatomi State Park
Friends of the Poynette Game Farm
Friends of the Red Cedar State Trail
Friends of Rib Mountain State Park
Friends of Roche-A-Cri State Park

Friends of Rock Island State Park
Friends of Sandhill State Wildlife Area
Friends of Stonefield State Historic Site
and Nelson Dewey State Park
Friends of the Stower Seven Lakes
State Trail
Friends of the Sugar River State Trail
Friends of the Tuscobia State Trail
Friends of Vernon Marsh State Wildlife Area
Friends of the Wild Goose State Trail
(Dodge County)
Friends of Whitefish Dunes State Park
Friends of the White River State Trail
Friends of Wildcat Mountain State Park
Friends of Willow River and
Kinnickinnic State Parks
Friends of Wyalusing State Park
Friends of Yellowstone Lake State Park
Heritage Hill Foundation
(Heritage Hill State Park)
Kettle Moraine Natural History
Association (Southern Unit)
Merrick State Park TURTLES
Navarino Nature Center Inc.
(Navarino State Wildlife Area)
Newport Wilderness Society
(Newport State Park)
Seth Peterson Cottage Conservancy

Friends
of Wisconsin State Parks



For membership information, contact
Patty Loosen at **608-264-8994** or
patricia.loosen@wisconsin.gov
or visit FWSP.org

Friends of Wisconsin State Parks
P.O. Box 2271
Madison, WI 53701-2271



To subscribe
to *Wisconsin
Natural Resources*
magazine, visit us
online at wnrmag.com or call
1-800-678-9472

