



# LIBRARIES

UNIVERSITY OF WISCONSIN-MADISON

## **Rural architecture in the gothick taste: being twenty new designs, for temples, garden-seats, summer-houses, lodges, terminies, piers, &c. on sixteen copper plates : with instructions to workmen, and ...**

Halfpenny, William, -1755; Halfpenny, John, active 18th century  
London, England: Robert Sayer, 1752

<https://digital.library.wisc.edu/1711.dl/XYHA43B2D3EPG8Y>

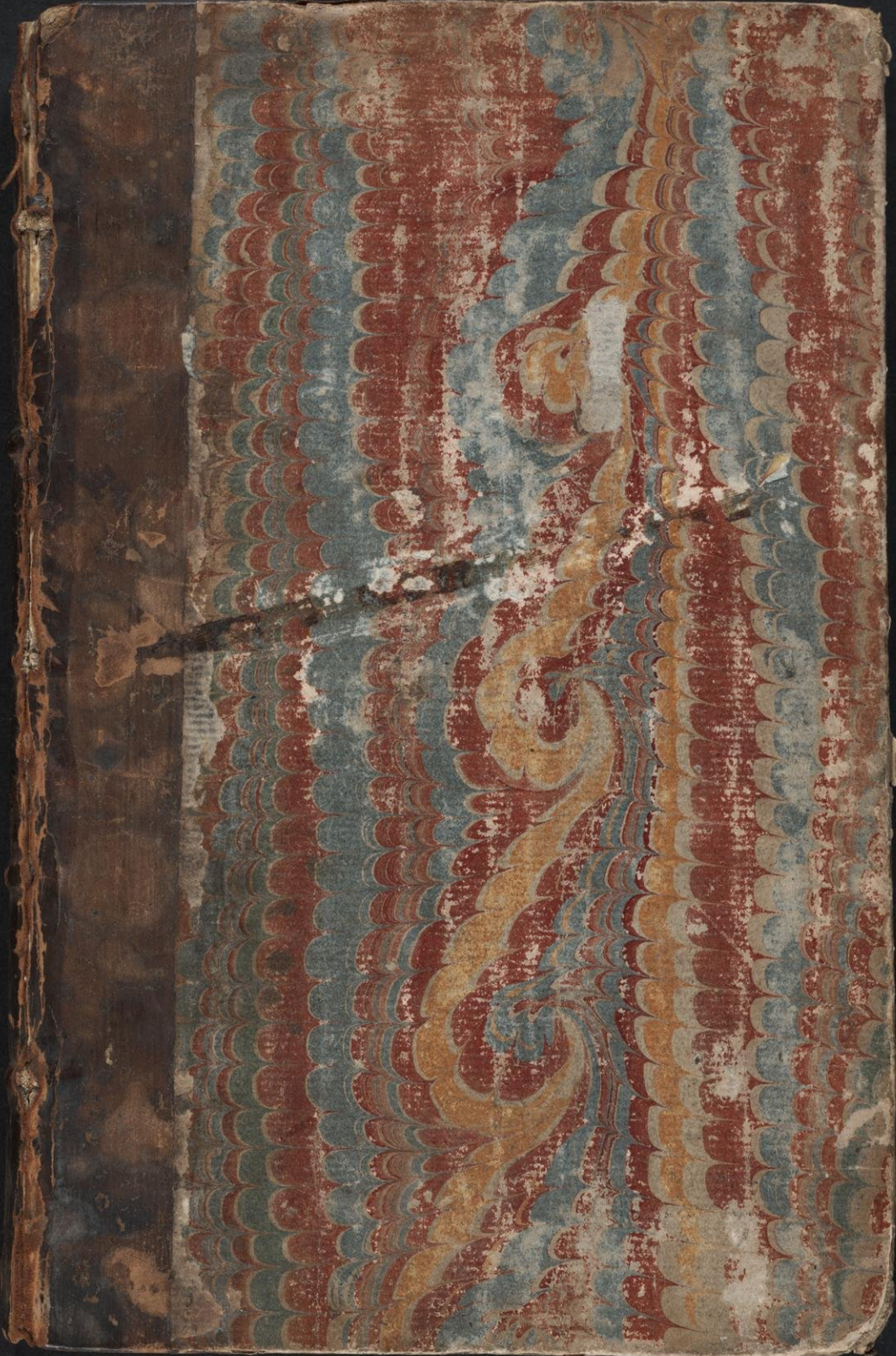
<http://rightsstatements.org/vocab/NKC/1.0/>

For information on re-use see:

<http://digital.library.wisc.edu/1711.dl/Copyright>

The libraries provide public access to a wide range of material, including online exhibits, digitized collections, archival finding aids, our catalog, online articles, and a growing range of materials in many media.

When possible, we provide rights information in catalog records, finding aids, and other metadata that accompanies collections or items. However, it is always the user's obligation to evaluate copyright and rights issues in light of their own use.



~~T 3896~~  
T 3194  
1/19

2



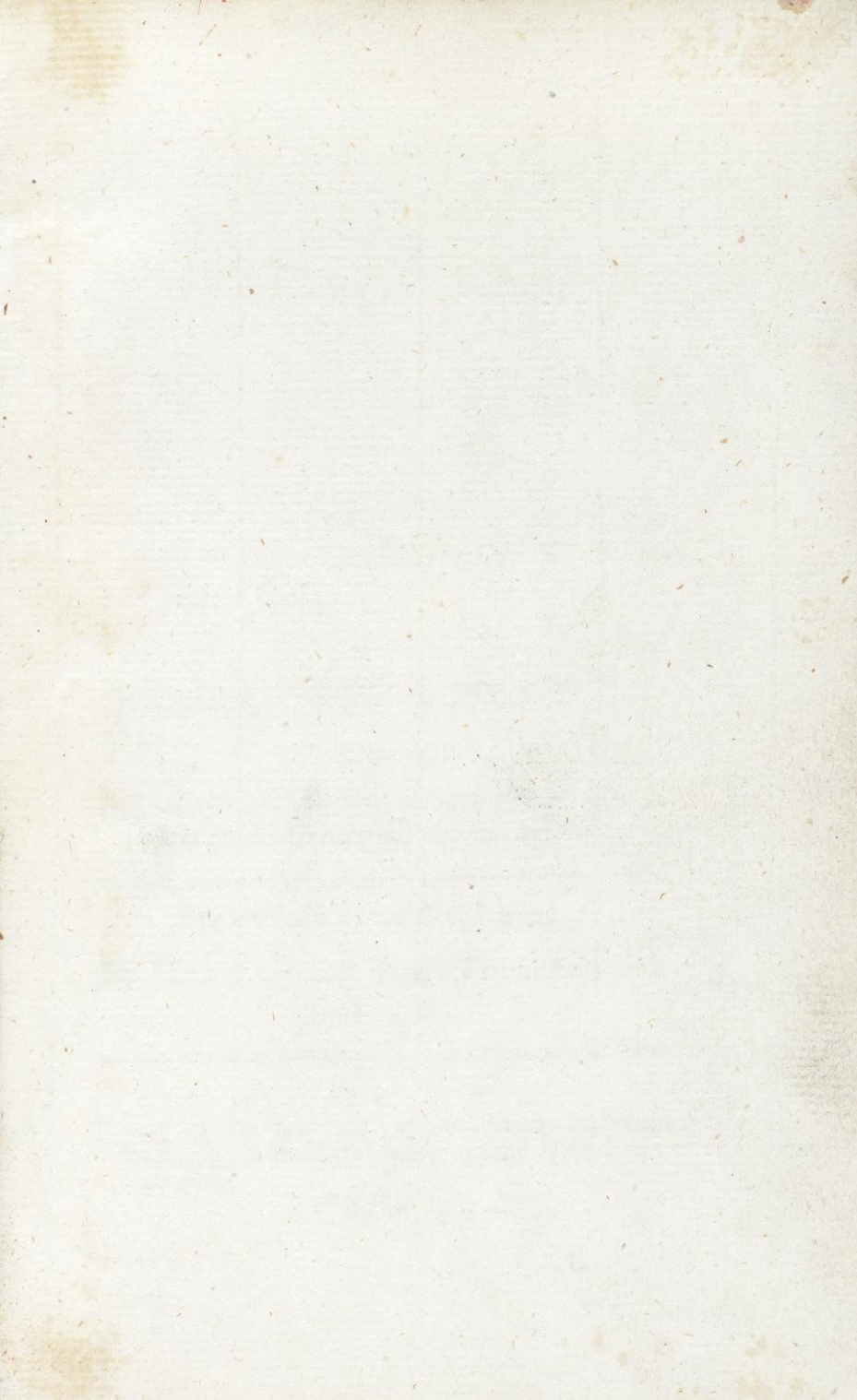
The Library  
University of Wisconsin  
✦  
Thordarson Collection

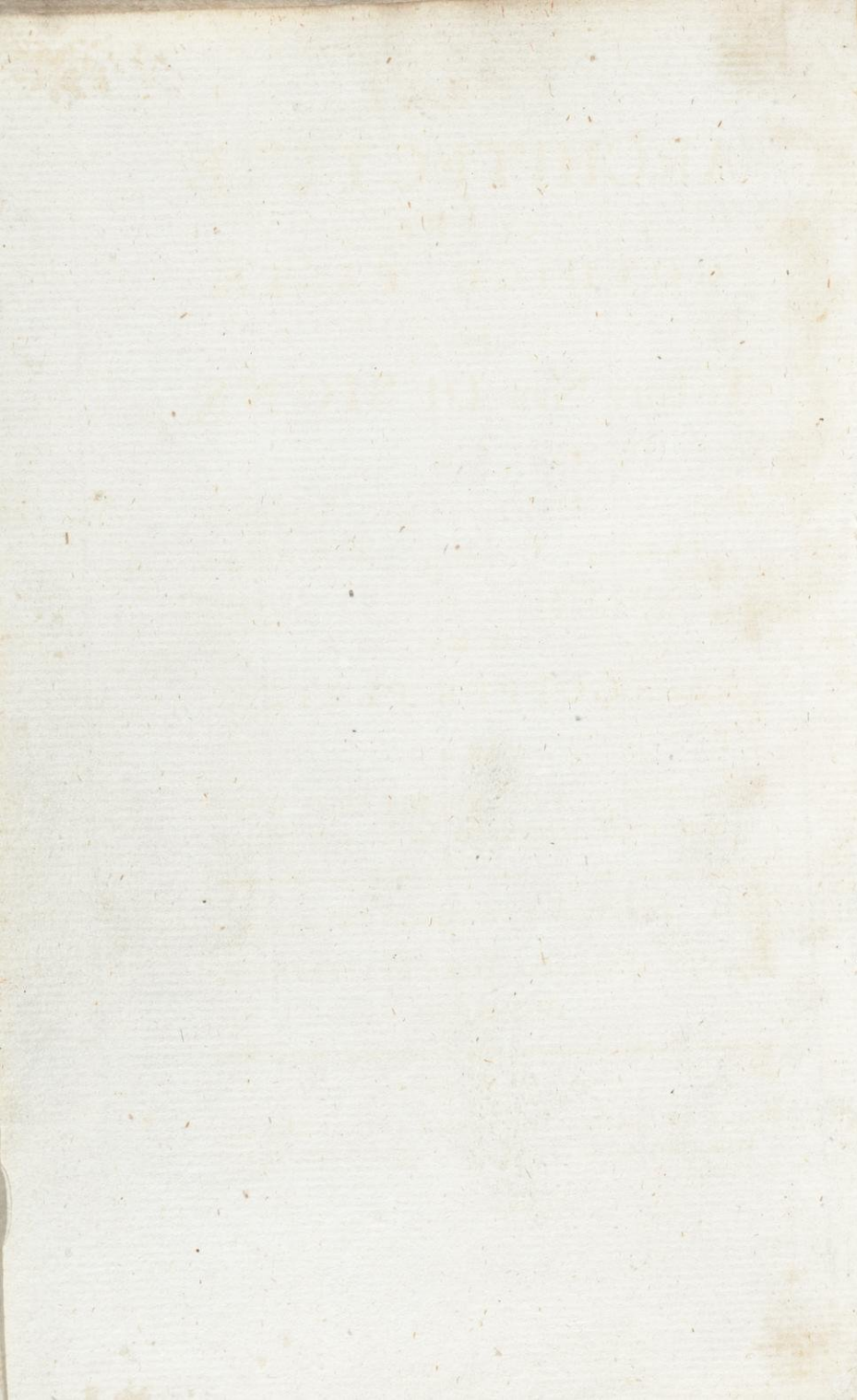
363

2 works in 1 vol.

994 Arch.







Wm Smith No  
RURAL

# ARCHITECTURE

IN THE  
GOTHICK TASTE.

BEING  
Twenty New DESIGNS,

FOR  
Temples, Garden-Seats, Summer-  
Houses, Lodges, Terminies,  
Piers, &c.

ON  
Sixteen COPPER PLATES.

WITH  
Instructions to Workmen, and Hints where  
with most Advantage to be erected.

---

The Whole invented and drawn  
By WILLIAM and JOHN HALFPENNY.  
Architects.

---

L O N D O N :

Printed for and sold by ROBERT SAYER, Map and  
Printfeller, at the *Golden Buck*, opposite *Fetter-Lane*  
*Fleet-street*.

MDCCLII.



RURAL  
ARCHITECTURE

IN THE  
GOTHIC TASTE  
DESIGNED  
Twenty New Designs

FOR  
Temples, Garden Seats, Summer  
Houses, Lodges, Terraces,  
Pavilions, &c.

By  
SIR JOHN COCKERILL

WITH  
Instructions to Workmen andHints which  
will not be thought to be superfluous.

---

The Whole bound and drawn  
By W. Baskett and John H. Baskett

---

LONDON  
Printed by R. DODD, in Pall Mall

1790



## PLATE I.



HE W S the Plan and Elevation of a Building, wherein is a Cove Seat, Sixteen Feet Diameter, with other Conveniencies as follow : A, the Floor, B, a small Room, with a Chimney ; C, a Bog-House ; D, Stairs leading to a Room eight Feet square over the Crown of the Cove for Musicians, &c. the Floor is one Step above the Surface, but if built on Low Ground, it will appear much more graceful to be elevated on a Subplinth three or four Feet high, and ascended to by Steps in Proportion.

PLATE

## P L A T E II.

Shews the Plan and Elevation of a Ter-  
 miny-Seat, Sixteen Feet wide in the Clear,  
 whose Floor is elevated Four Feet Six  
 Inches above the Surface of the Earth, for  
 the several Proportions, see the Scale.

## P L A T E III.

See A the Plan for a small Temple,  
 or Summer-house, Ten Feet each Way  
 in the Clear ; B shews the Elevation ;  
 this Design will be most suitable on an  
 Eminence, in a rural Plantation. The  
 Design C, is Eight Feet wide in the  
 Clear, and may be adapted to a Gateway,  
 Garden Seat, &c.

## P L A T E IV.

Shews the Plan and Elevation of a small  
 Temple, Ten Feet each Way in the Clear ;  
 A the Steps ; B a Well-Hole ; in the  
 groin'd or cov'd Ceiling open to the Cupola.

P L A T E

P L A T E

## P L A T E V.

Shews the Elevation of a Temple, Twenty-two Feet wide in Front, lighted from Windows in the Doom. This Design is suitable for an Eminence to be seen at a great Distance, or for the Center of a Wood, where its top can be seen above the Trees.

## P L A T E VI.

Shews the Plan and Elevation of a Temple, the Plan A is Eleven Feet each Way in the Clear.

## P L A T E VII.

Shews another Plan, and Elevation of a Temple; its Plan A is Fourteen Feet by Ten Feet in the Clear.

## P L A T E VIII.

Shews the Plan and Elevation of a Summer-house; its Plan A is Twelve Feet each Way in the Clear.

P L A T E

## P L A T E IX.

Shews the Plan and Elevation of a Temple ; A the Steps ; B the Plan, 20 Feet each Way in the Clear ; the Brakes are two Feet each, which makes the whole Width 24 Feet.

## P L A T E X.

Shews the Plan and Elevation of a Summer-house, elevated on a Pavement or green Sod, and ascended to by Steps, or a Slope of Grass ; A the Entrance ; B the Plan, 10 Feet each Way in the Clear.

## P L A T E XI.

Shews the Plan and Elevation of a Lodge, or House of Retirement, 78 Feet in Front ; A Tarras ; BB Entrances ; C Stair-Cafe 9 Feet wide ; D Parlour 17 Feet by 15 Feet ; E Dining-room, 18 Feet by 16 Feet ; F Passage ; G Closet, nine Feet by nine ; H Study, 17 Feet by 15 Feet. A Bed-chamber is intended over E, and one for a Servant over F G, with a Room above lighted by a Semicircle Window, to be come at by a small Stairs at the Side of the Bed-Room.

P L A T E

## P L A T E XII.

Shews the Plan and Elevation of a Lodge, or House of Retirement ; A the Front Steps ; B B circular Passage six Feet wide ; C Ditto Stairs, leading to the Bed-Chambers, and up to the Gallery, or Gasebo ; H (see Front ;) D Well-hole, E Back-steps ; F Parlour, 19 Feet by 15 Feet ; G Dining-room, 19 Feet by 15 Feet ; some intended Bed-rooms over F and G, and Garrets for Servants in the Roofs, with proper Offices under F and G.

## P L A T E XIII.

Shews the Plan and Elevation of a small Lodge, or Summer-house ; A Steps ; B Hall, 8 Feet 9 Inches by 6 Feet ; C Breakfast-room, 12 Feet by Seven Feet ; D Waiting-room and Stairs, 12 Feet by Seven Feet ; E Great Room, 20 Feet by 14 Feet, and two Stories high, FF Bow Windows, Five Feet wide in the Clear.

## P L A T E XIV.

Shews the Plan and Elevation of a small Lodge, or a Summer-house ; A the Steps ; B Hall, 14 Feet by 12 Feet ; C Stairs leading  
to

to the Cupola ; H (see Front) D Parlour, 18 Feet by 18 Feet ; E E are each Eight Feet Diameter ; F Bed-room, 18 Feet by 18 Feet ; GG Clofets, eight Feet Diameter. *N. B.* Proper Offices are intended below, and Garrets in the Roof for Servants Rooms, &c.

P L A T E X V.

Shews the Plan and Elevation of a Summer-houfe ; A, Colonade, 26 Feet by 16 Feet ; B B Rooms, 21 Feet by 14 Feet.

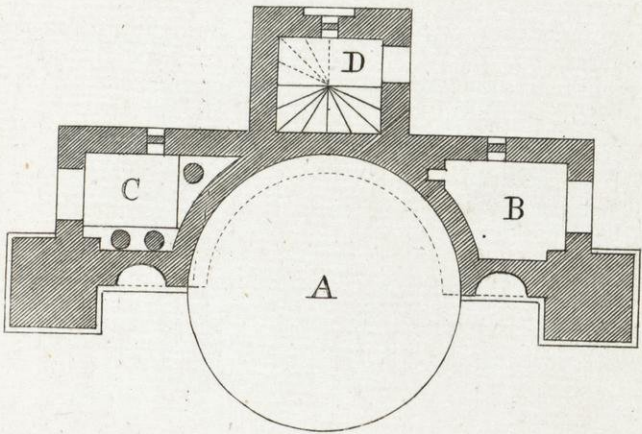
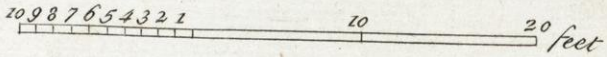
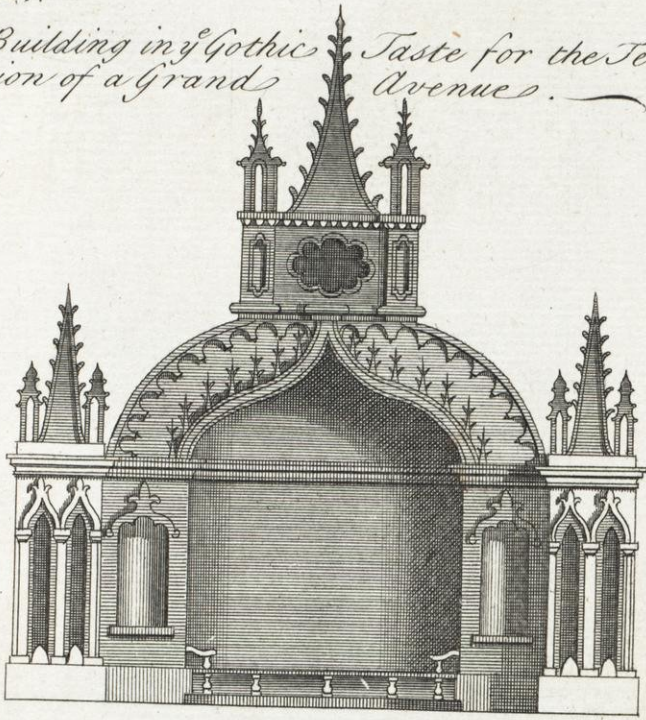
P L A T E X V I.

Shews Four different Designs for Terminies or Piers ; for their several Proportions, see the Scale.

F I N I S.

Pl. 1.

*A Building in Gothic Taste for the Termination of a Grand Avenue.*

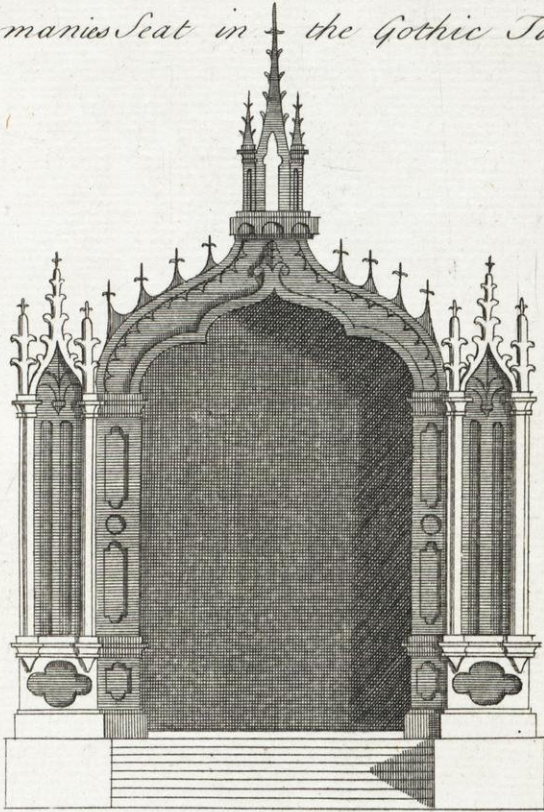




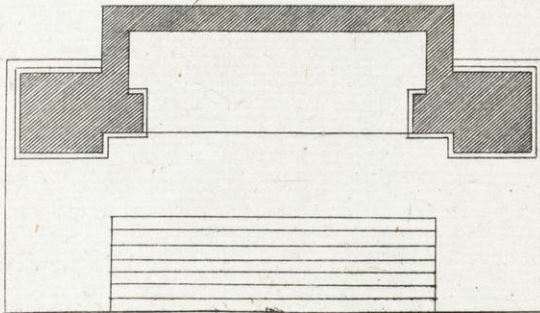


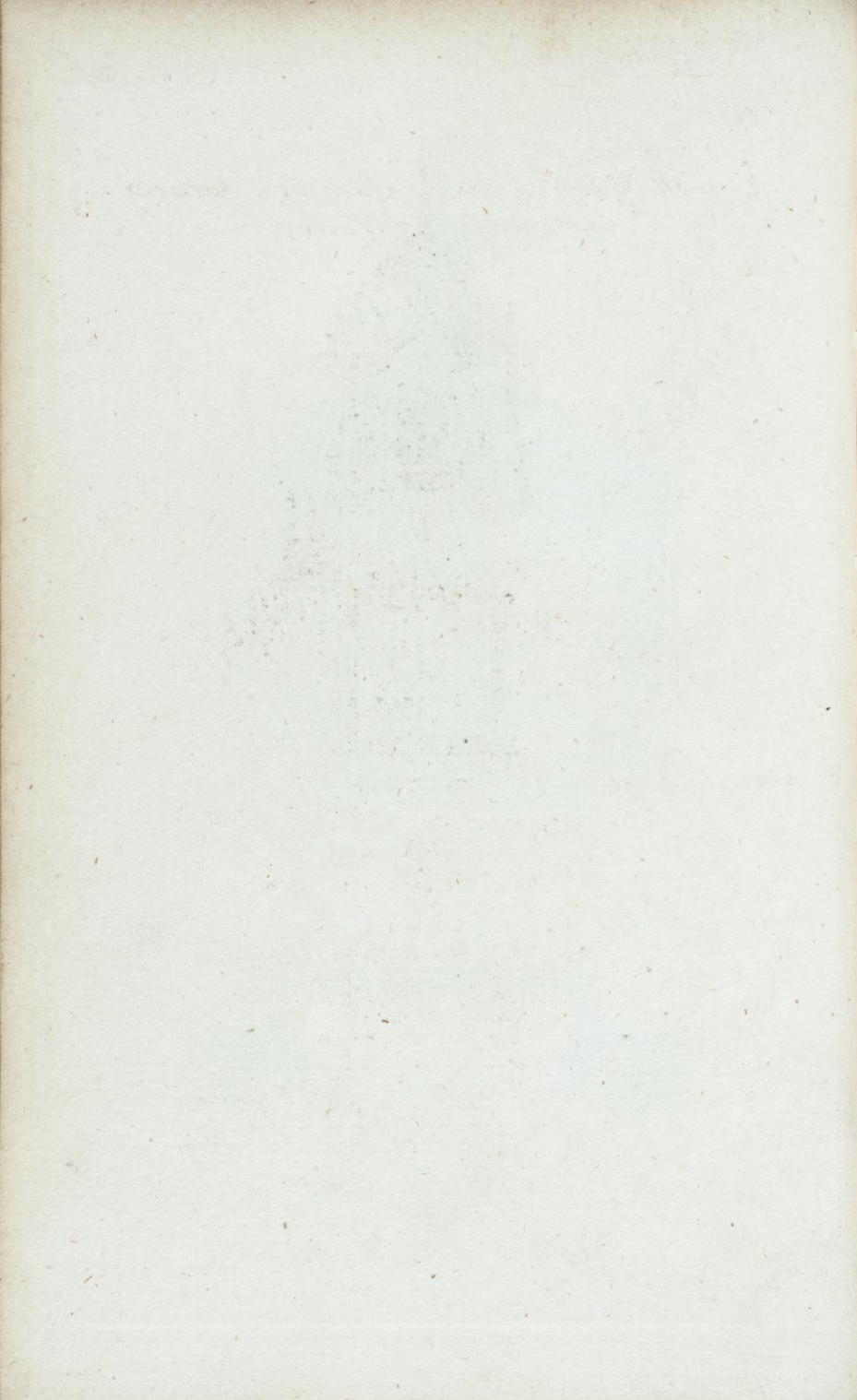
Pl. 2.

*A Germanic Seat in the Gothic Taste.*



10 9 8 7 6 5 4 3 2 1      10      20 feet



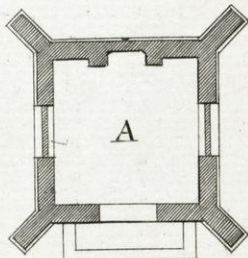


Pl. 3.

*A small Temple or Summer house  
in the Gothic Taste.*

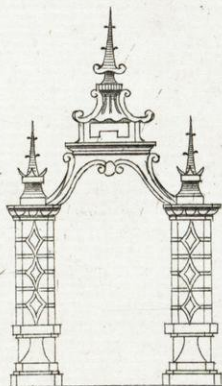


B



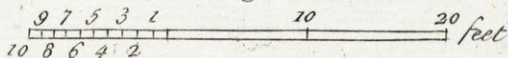
A

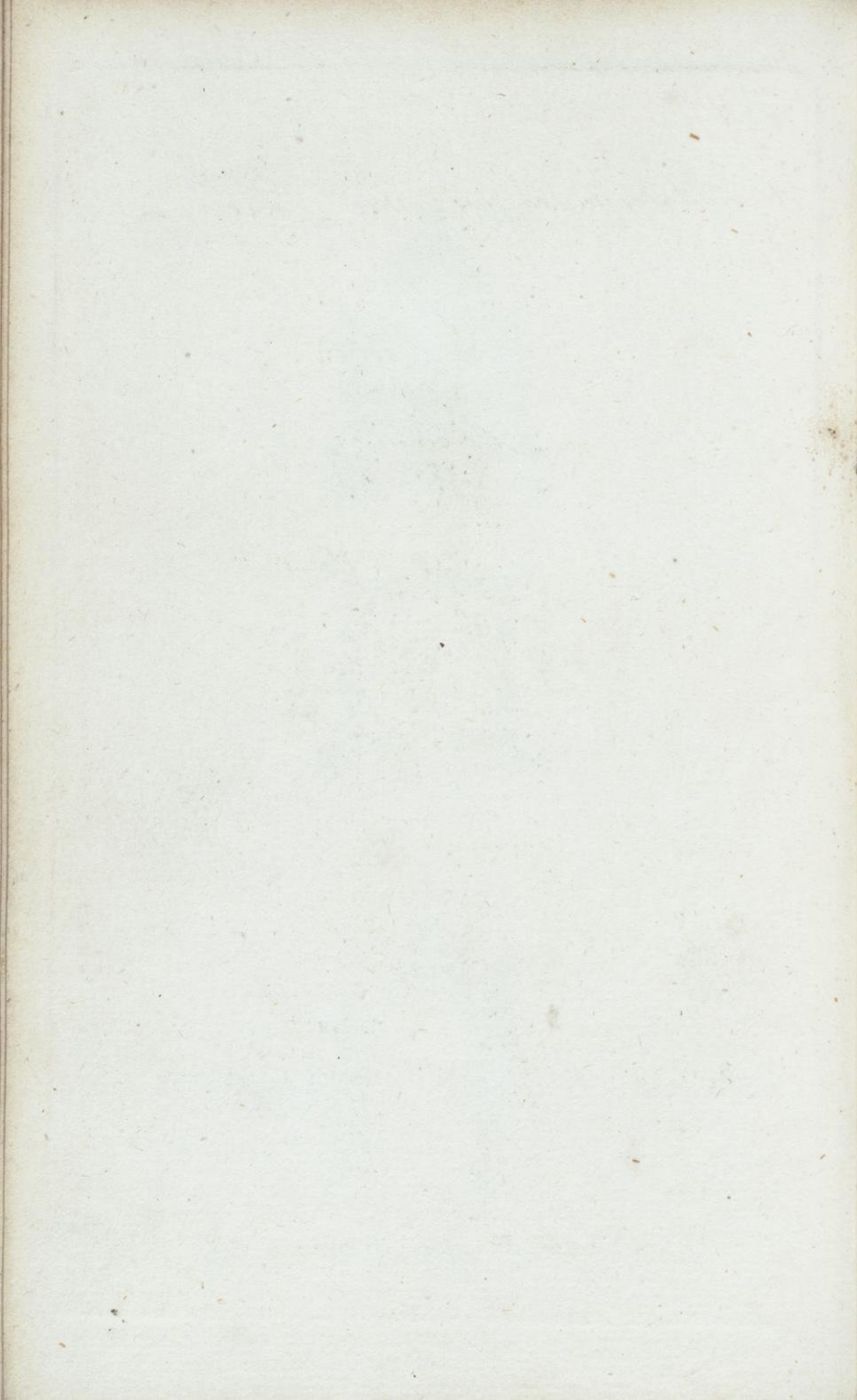
*A Gate Way in a*



*Composite Taste.*

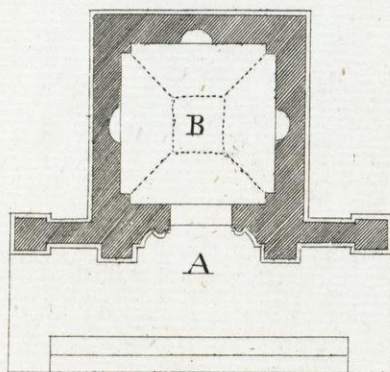
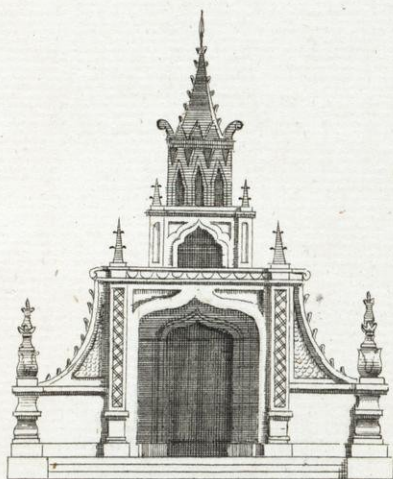
C





Pl. 4.

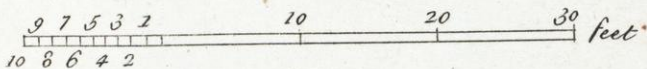
*A small Temple in the Gothic Taste.*



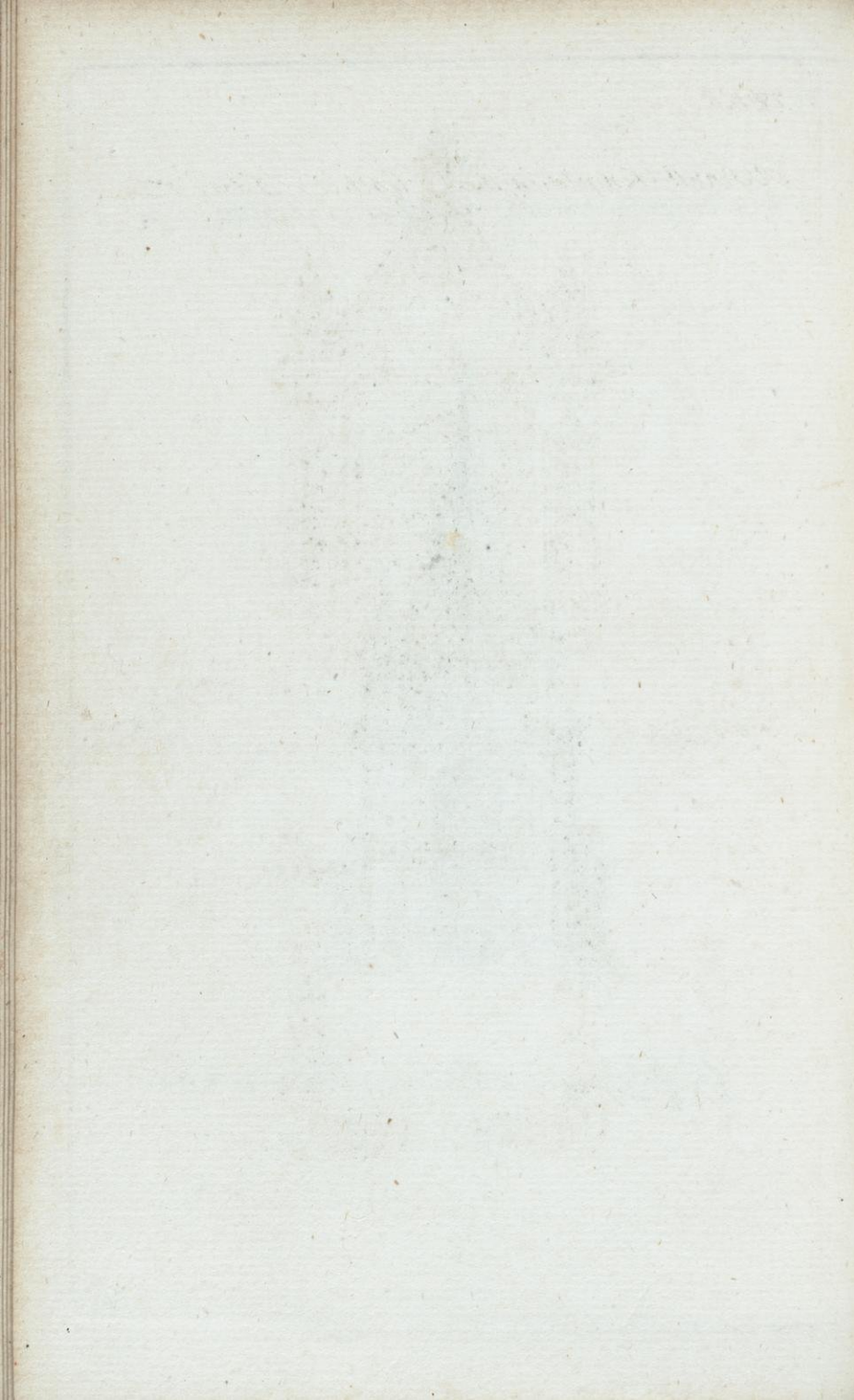
10 9 8 7 6 5 4 3 2 1      10      20 feet



*A Temple in the Gothic Taste*

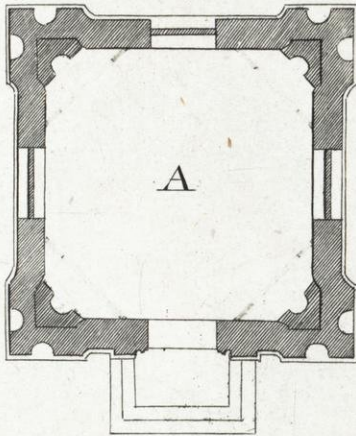
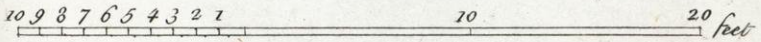
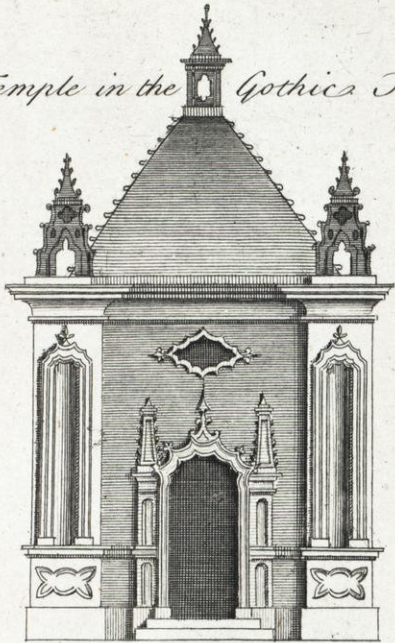


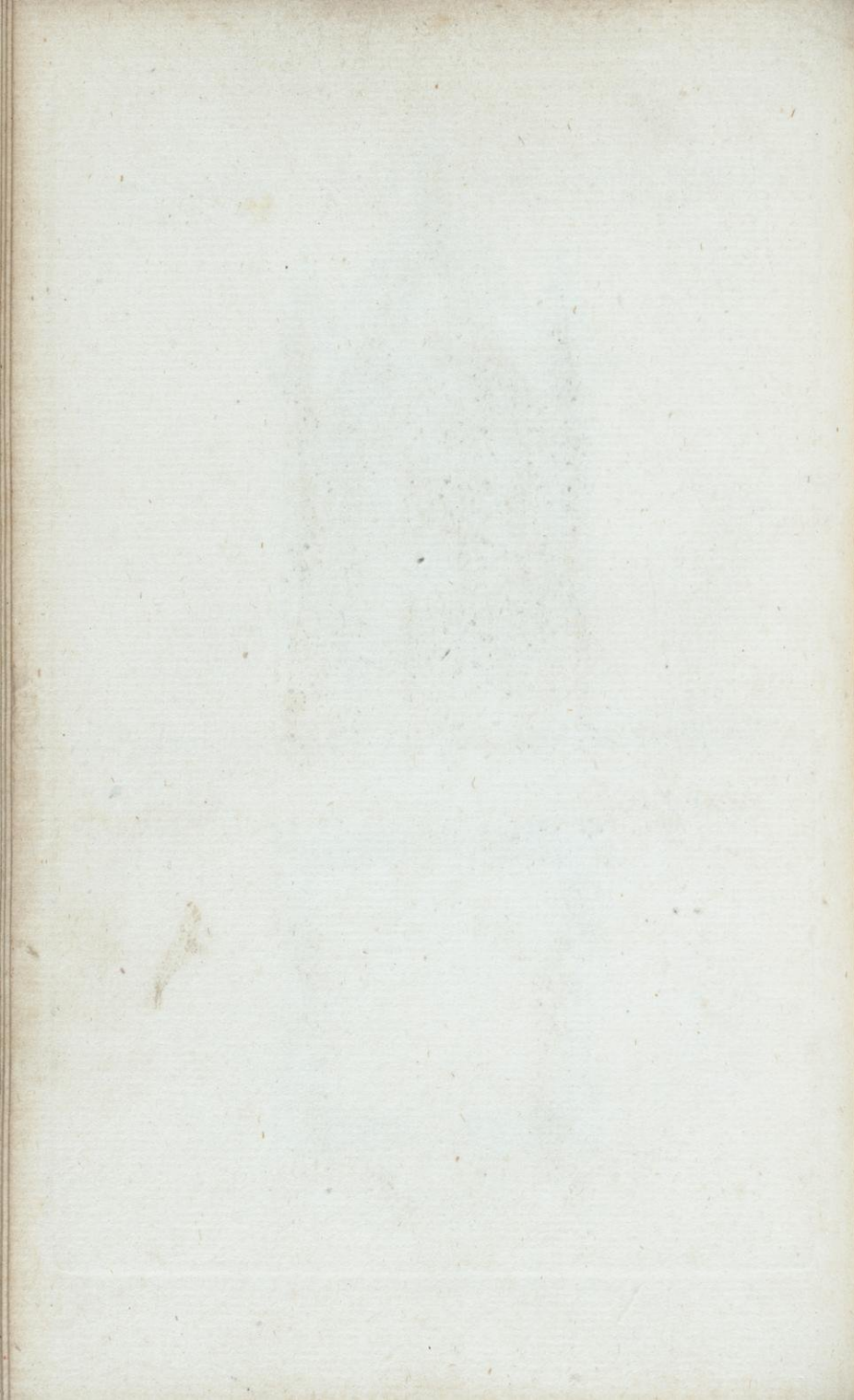




Pl. 6.

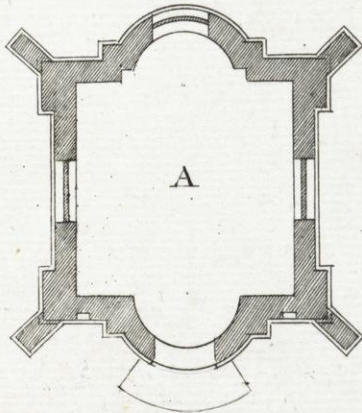
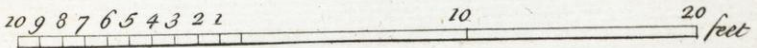
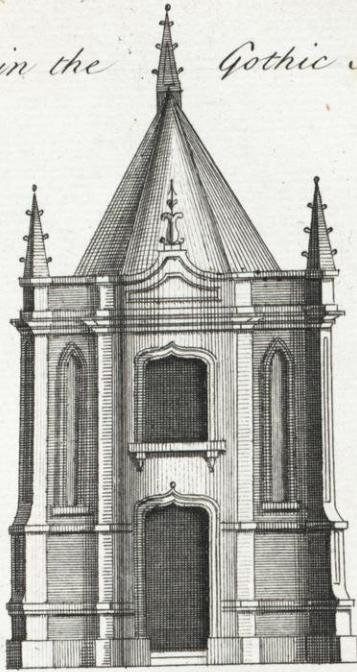
*A Small Temple in the Gothic Taste*

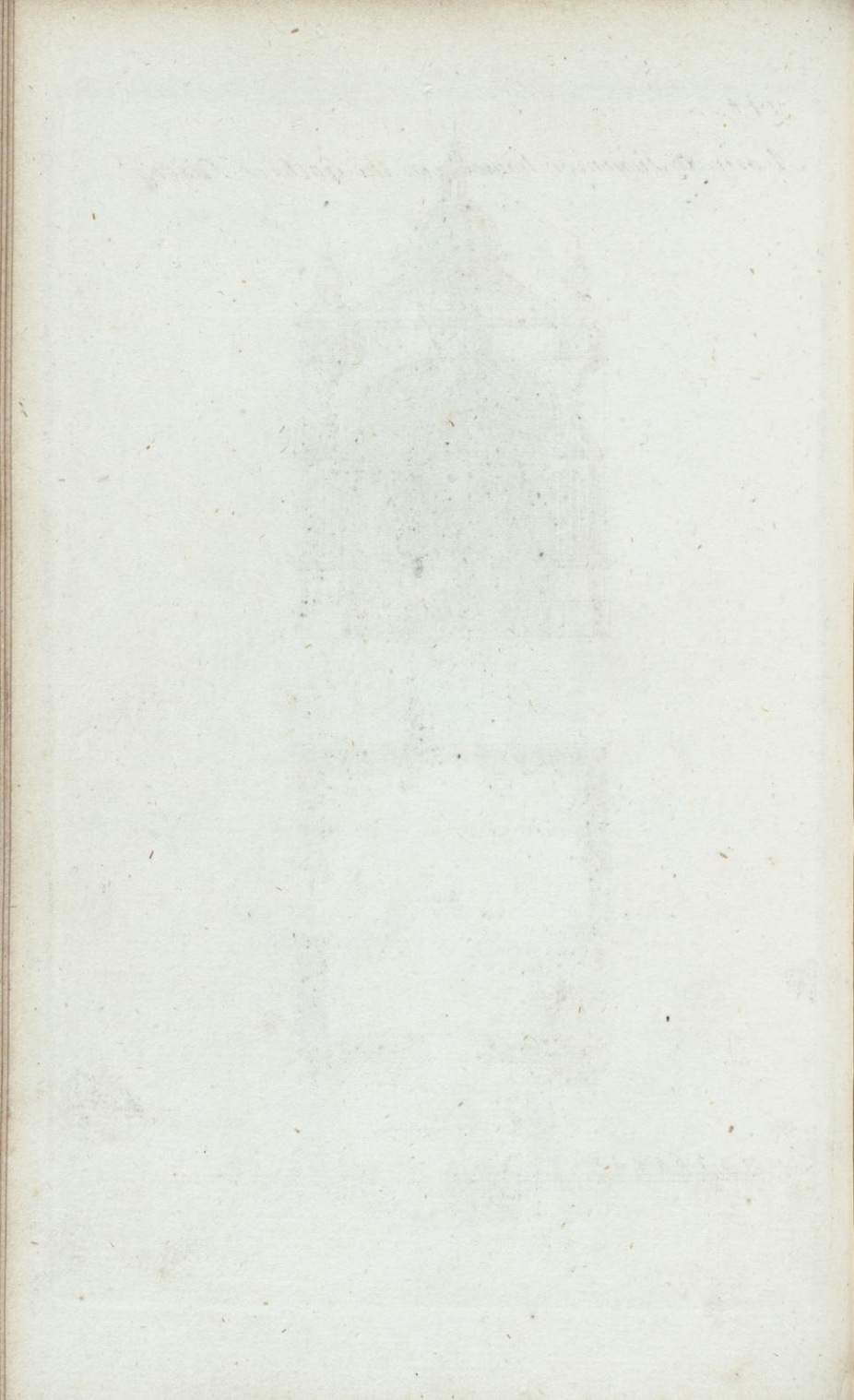




Pl. 7.

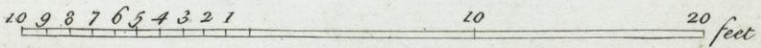
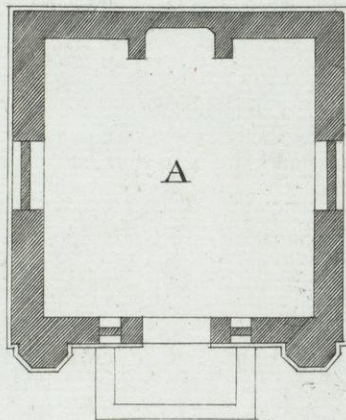
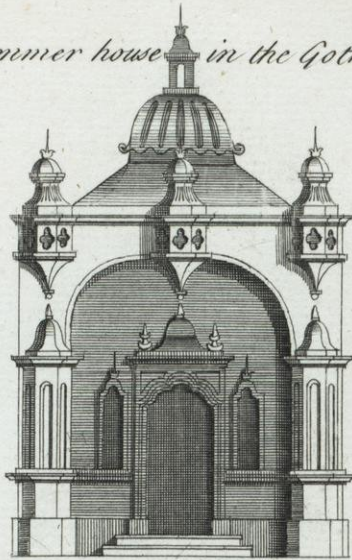
*A Temple in the Gothic Taste.*

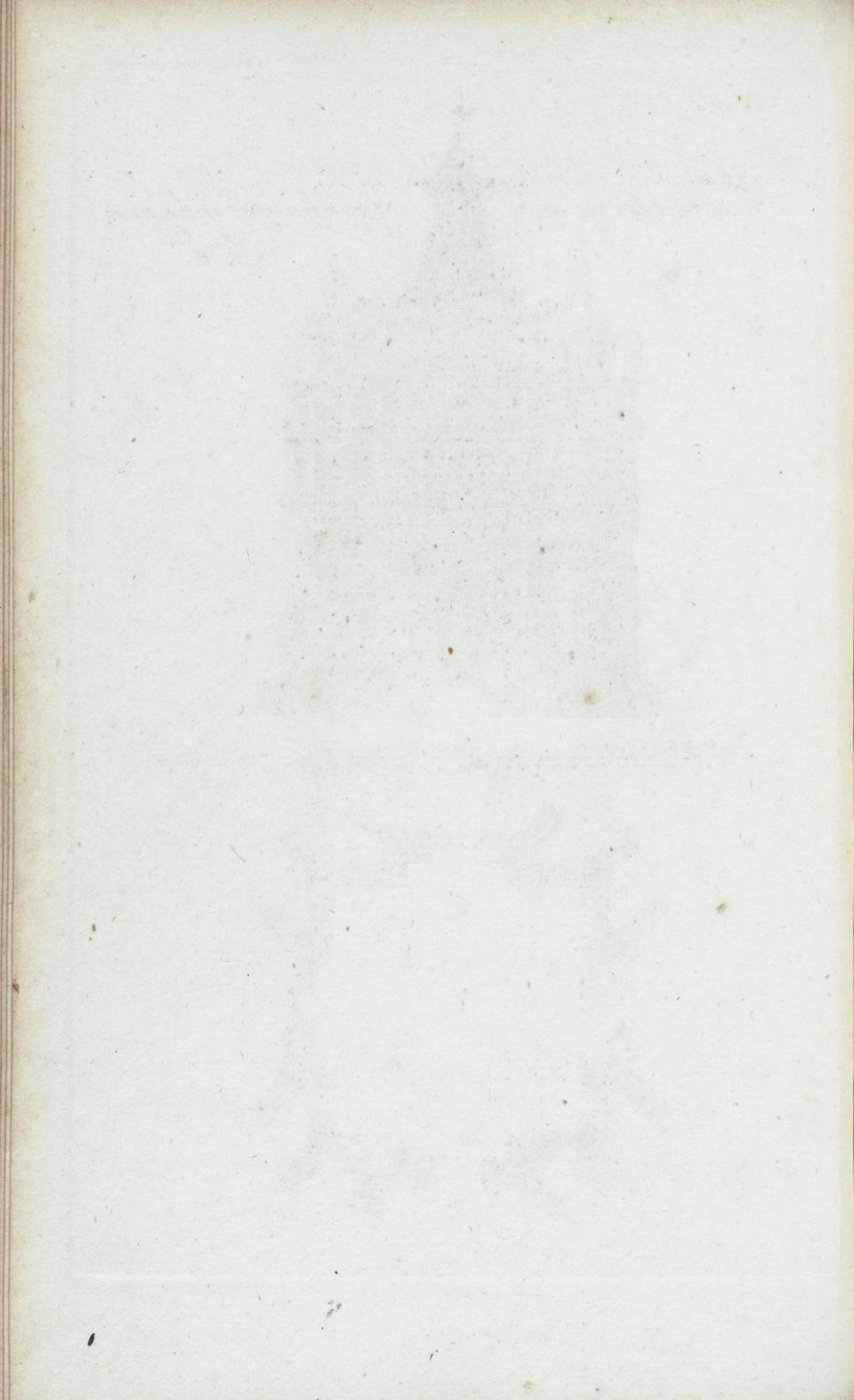




Pl. 3.

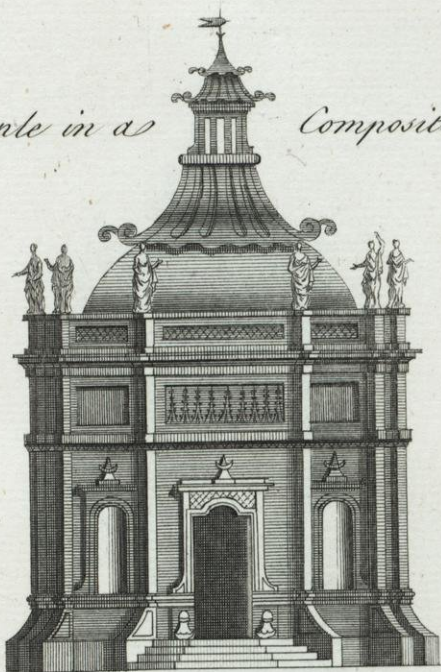
*A small Summer house in the Gothic Taste.*



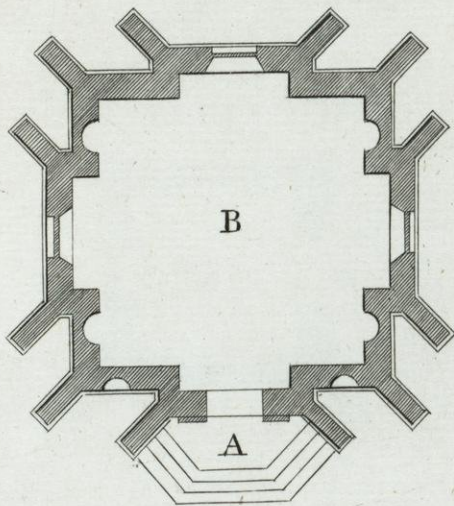


Pl. 9.

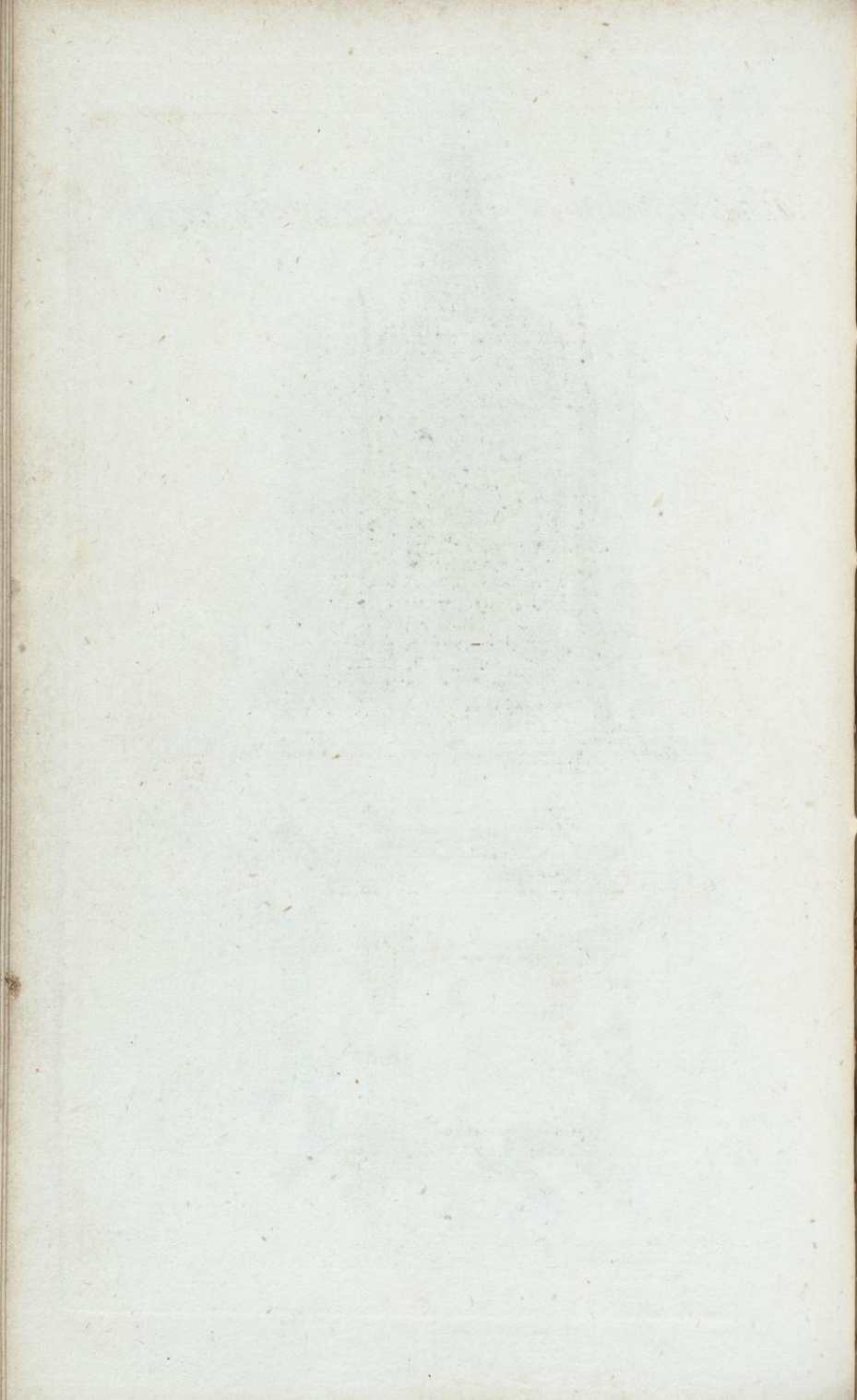
*A Temple in a Composite manner.*



10 987654321      10      20      30 feet

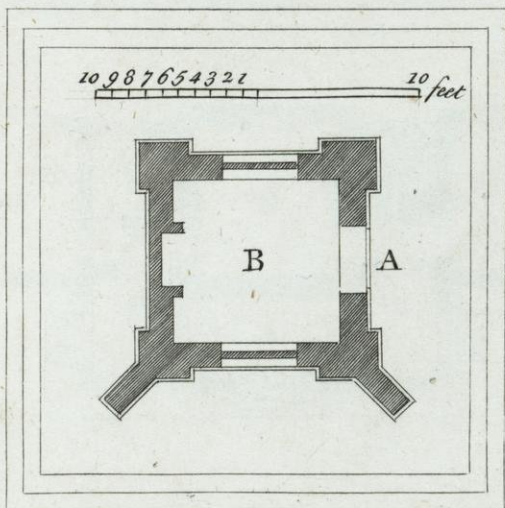
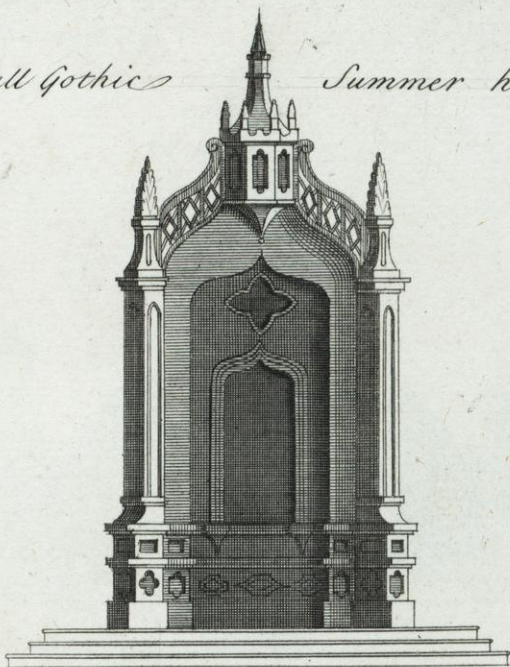


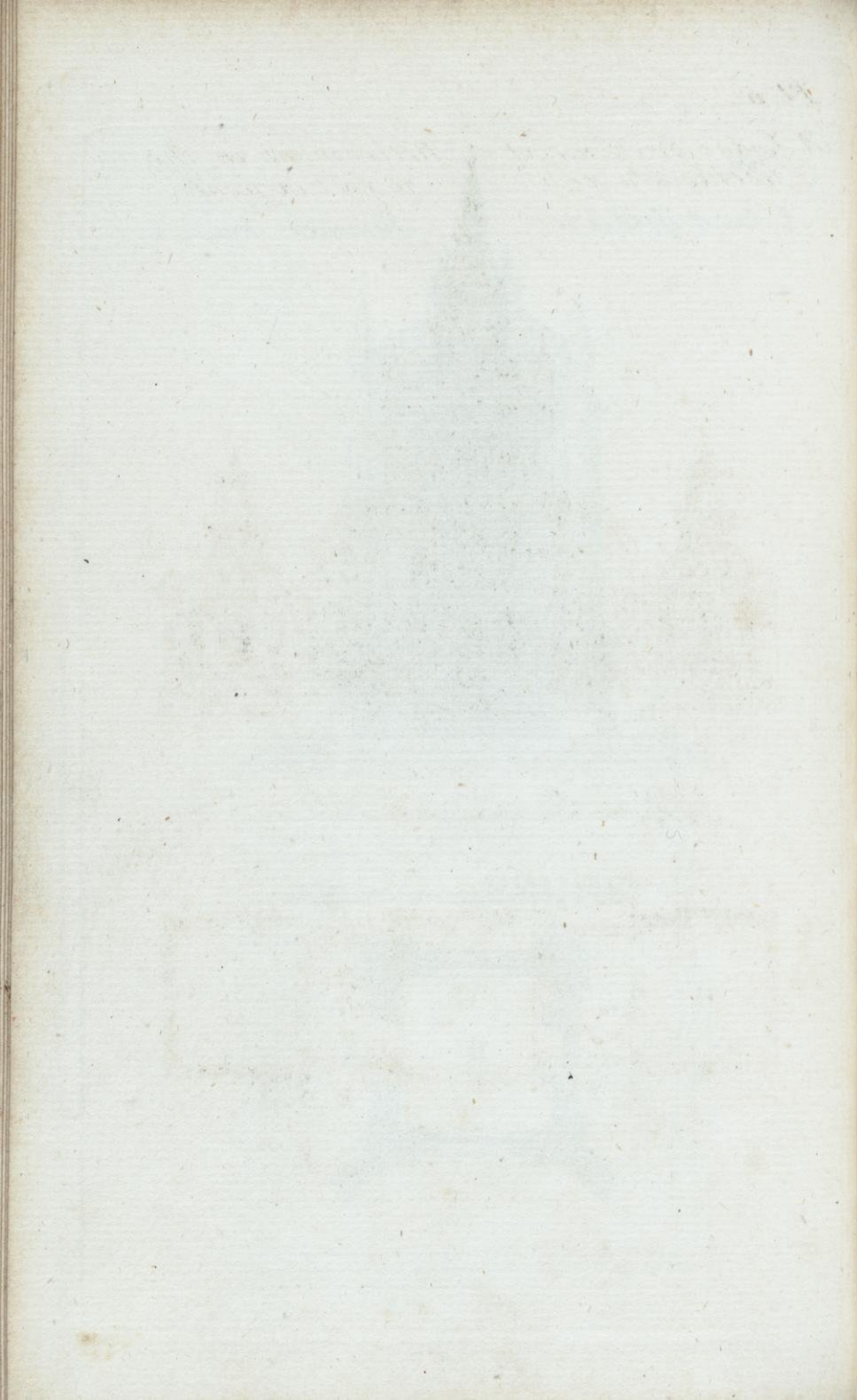




Pl 10.

*A Small Gothic Summer house.*

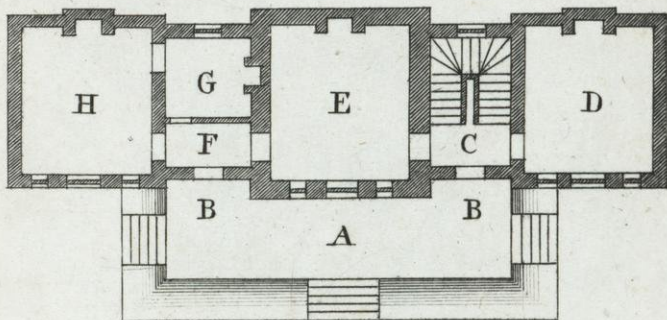
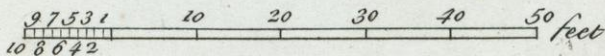
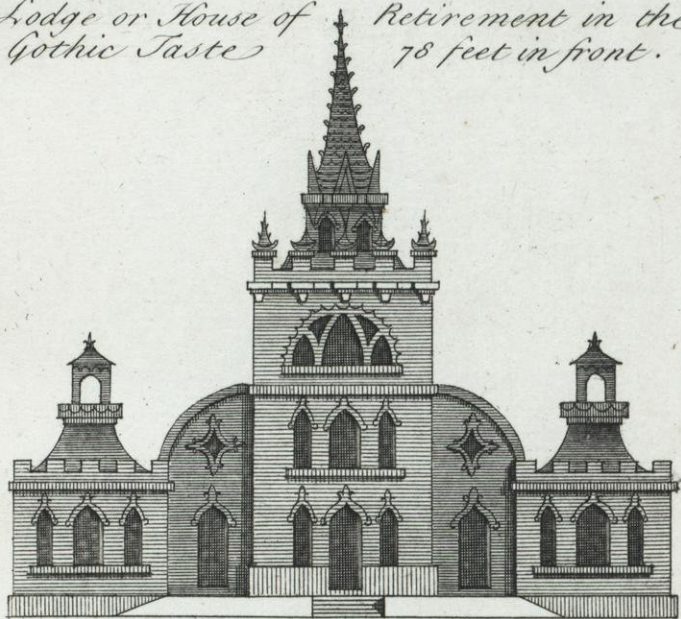


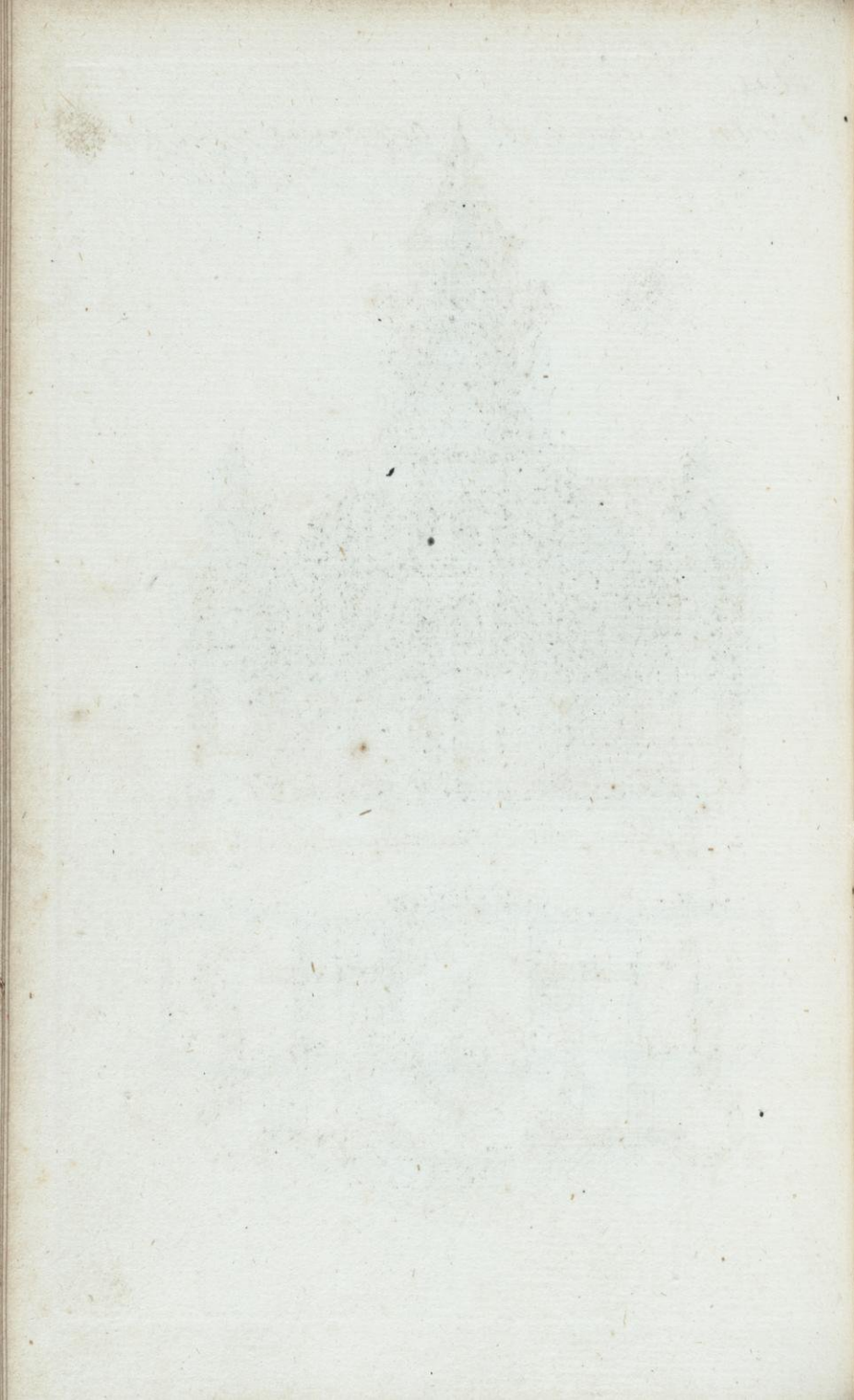


Pl. II.

A Lodge or House of  
Gothic Taste

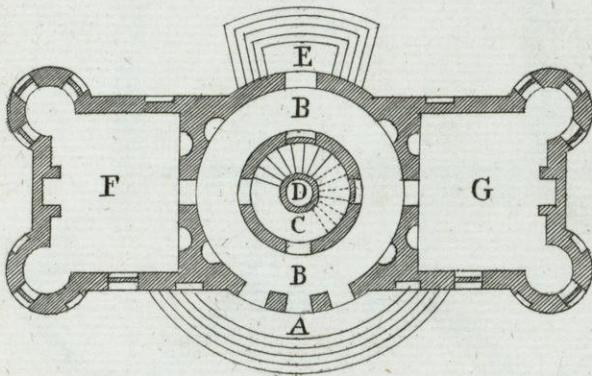
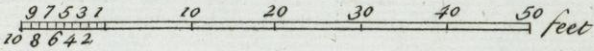
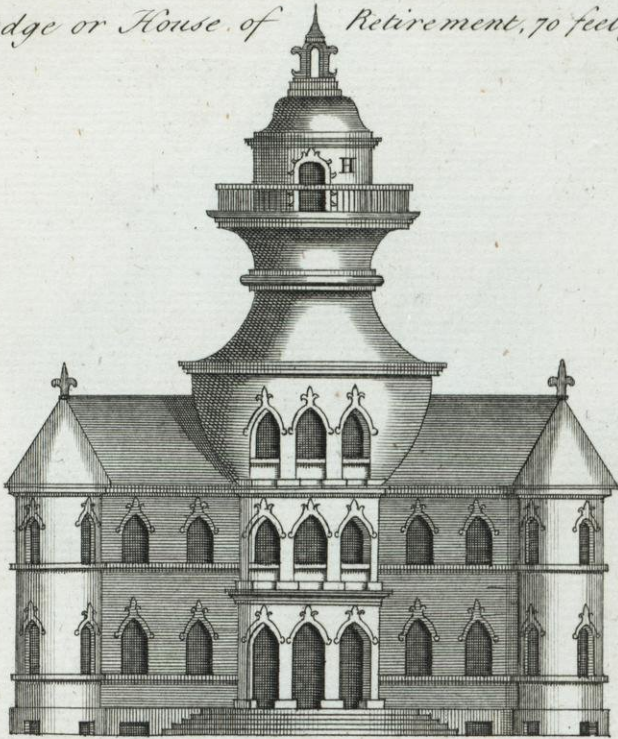
Retirement in the  
78 feet in front.

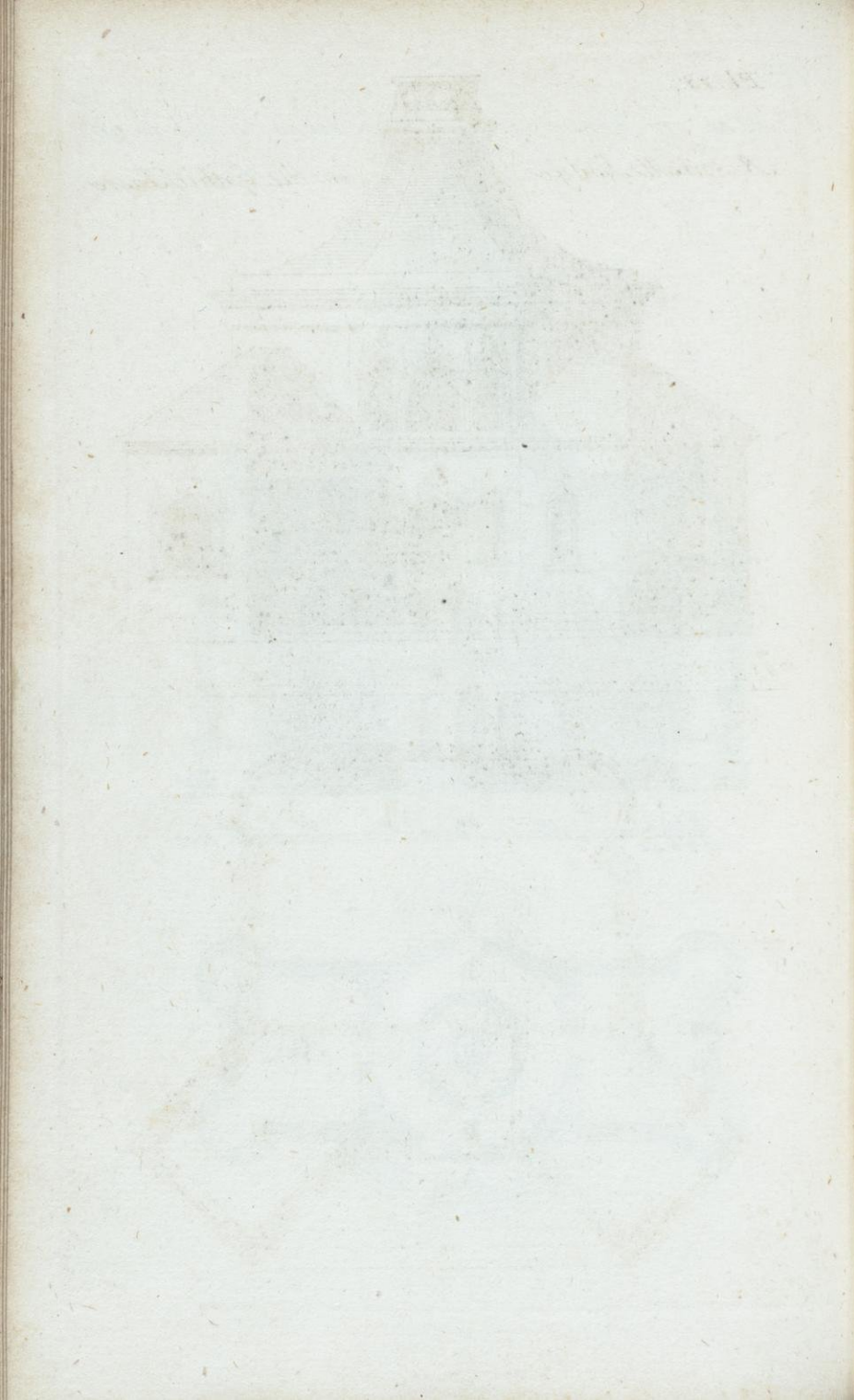




Pl. 12.

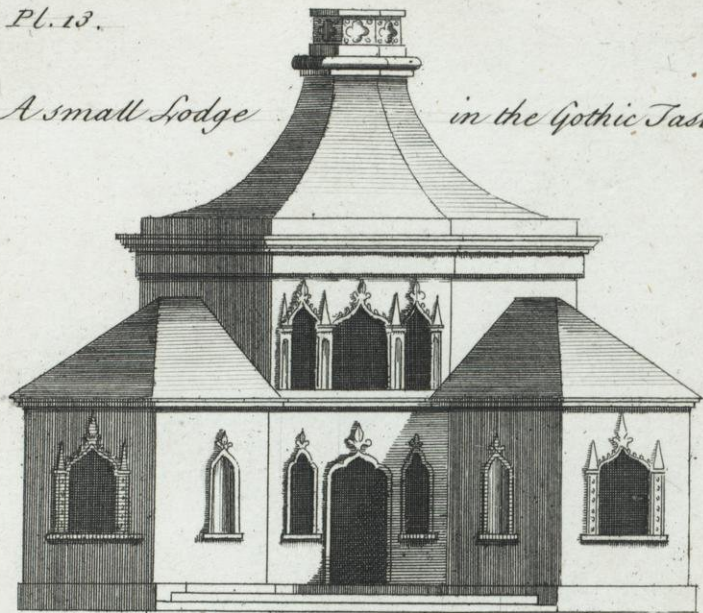
A Lodge or House of Retirement, 70 feet front.





Pl. 13.

*A small Lodge in the Gothic Taste.*

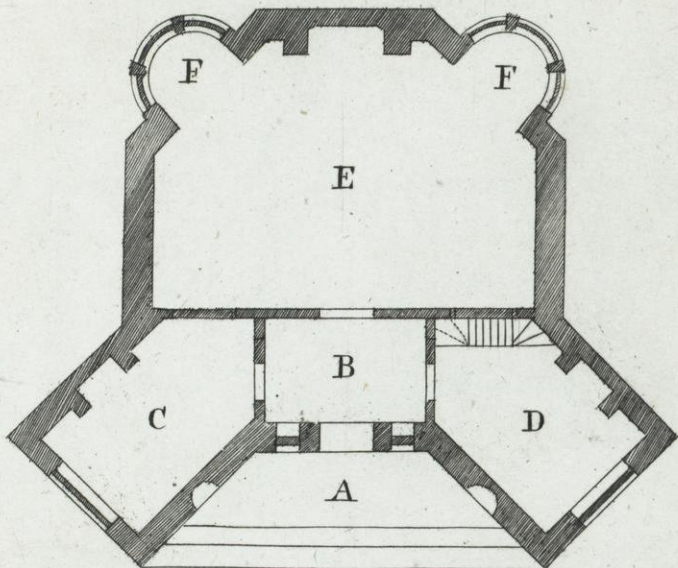


10 9 8 7 6 5 4 3 2 1

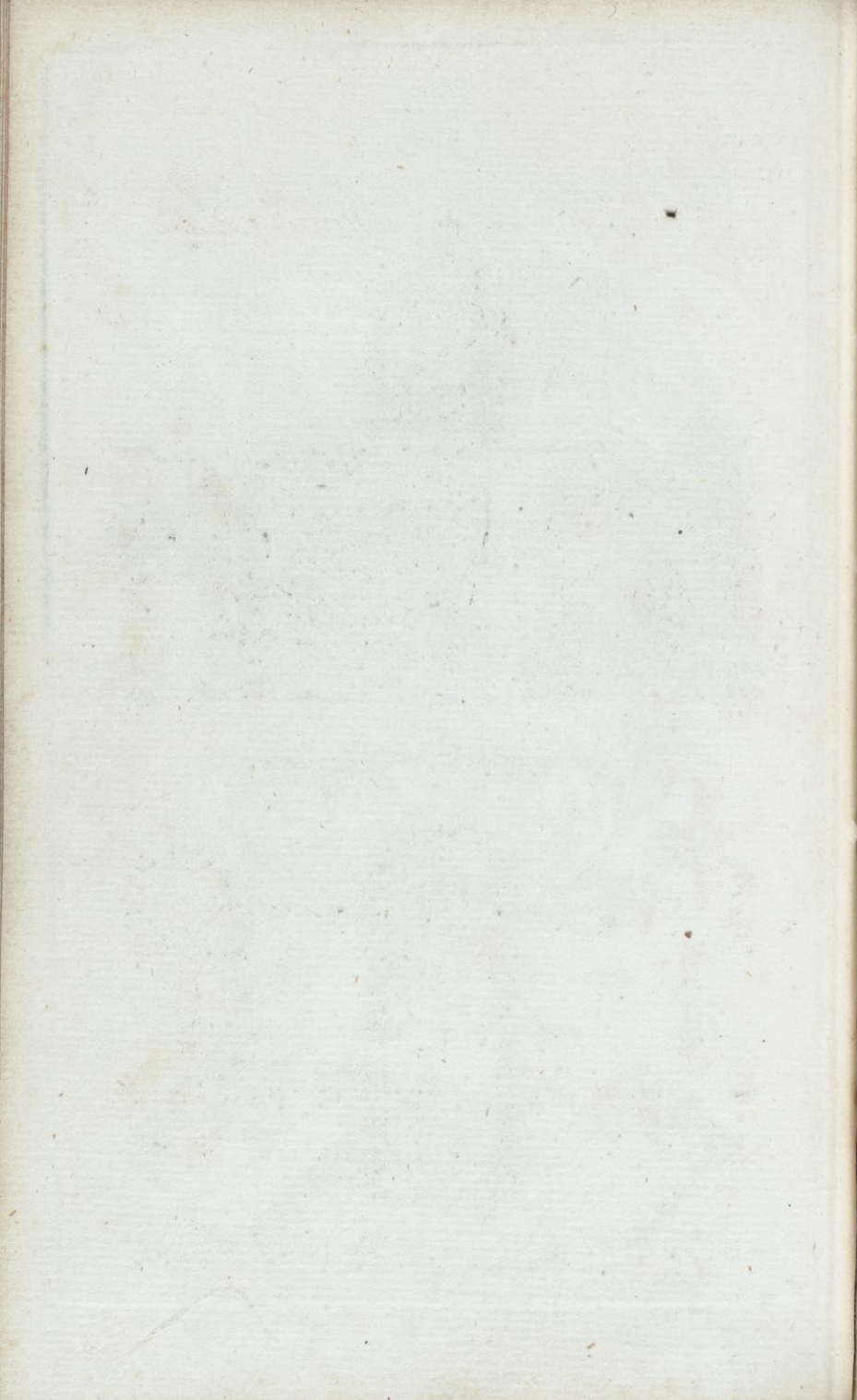
10

20

feet  
30

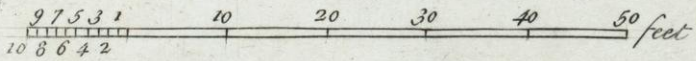
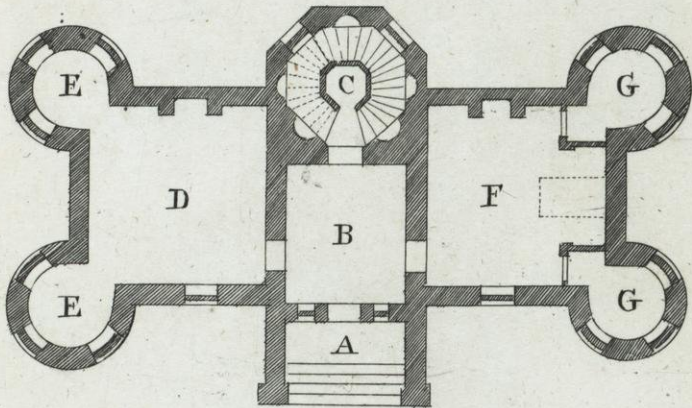
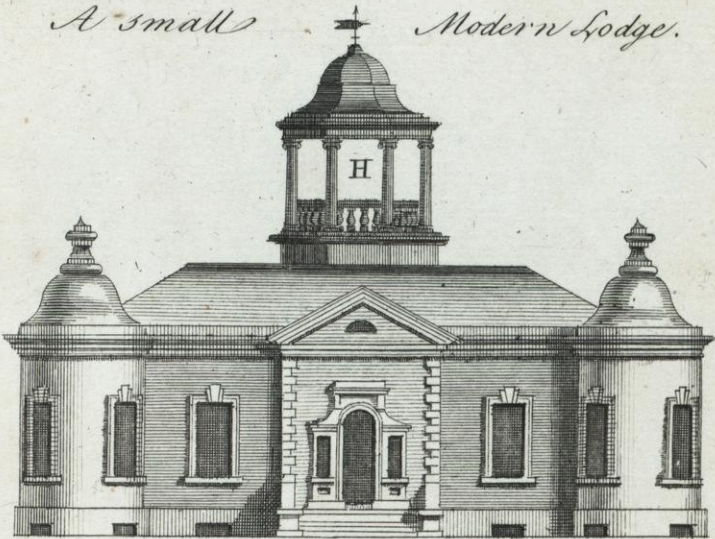


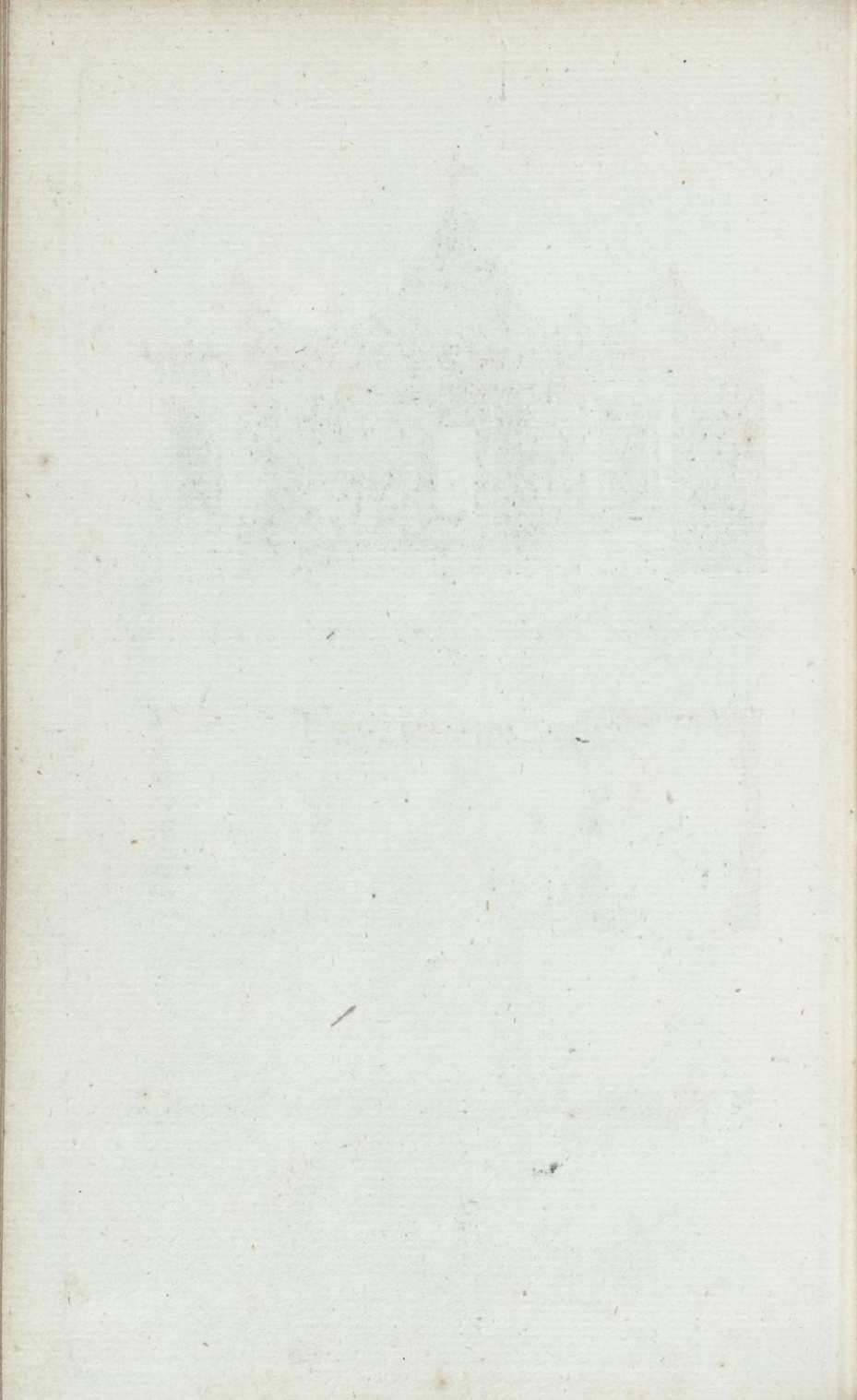


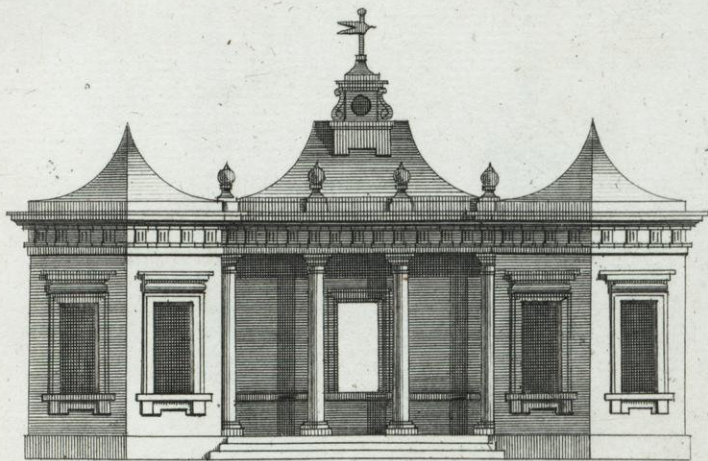


Pl. 14.

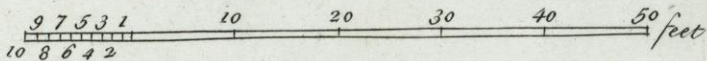
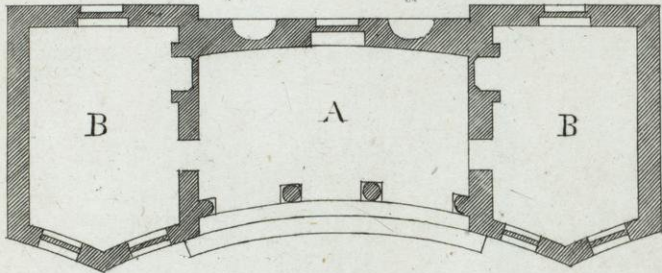
*A small Modern Lodge.*

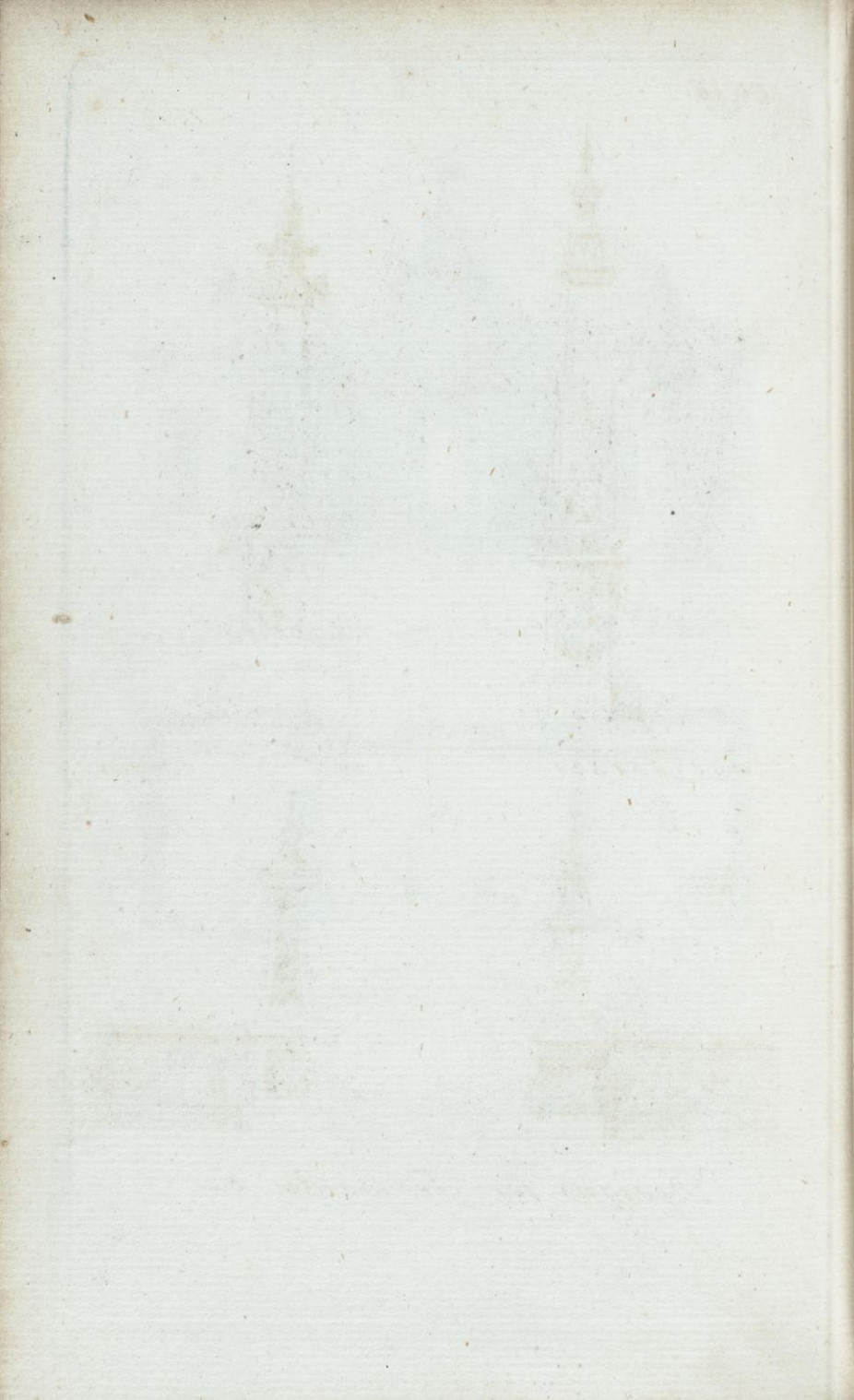


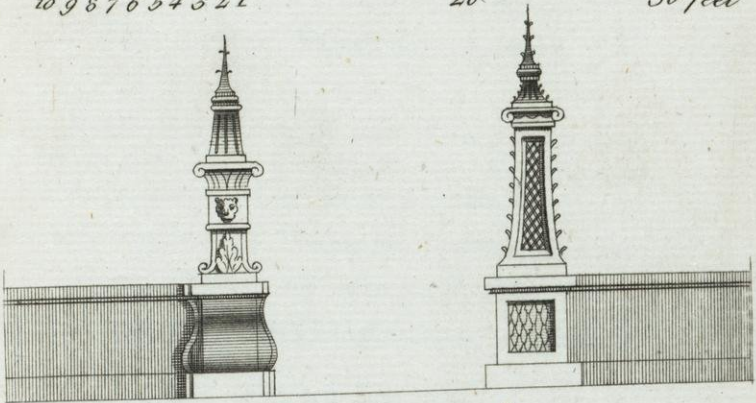
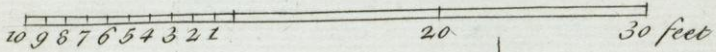
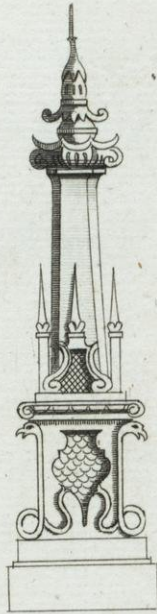
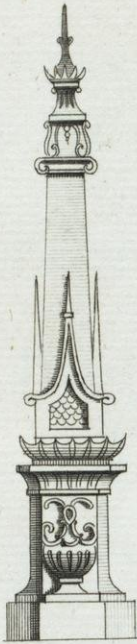




*A Summer house in the Modern Taste.*







*Designs for Terminals &c.*

