

Quarterly : a Union member's guide to upcoming events. Winter 1993

Madison, Wisconsin: Wisconsin Union, Winter 1993

<https://digital.library.wisc.edu/1711.dl/I5LHU5BY3ABKK87>

This material may be protected by copyright law (e.g., Title 17, US Code).

For information on re-use, see

<http://digital.library.wisc.edu/1711.dl/Copyright>

The libraries provide public access to a wide range of material, including online exhibits, digitized collections, archival finding aids, our catalog, online articles, and a growing range of materials in many media.

When possible, we provide rights information in catalog records, finding aids, and other metadata that accompanies collections or items. However, it is always the user's obligation to evaluate copyright and rights issues in light of their own use.

WINTER 1993

Quarterly

A Union Member's Guide to Upcoming Events

Come In from the Cold

Join us for a cup of coffee or hot chocolate and take a look at everything offered at the Wisconsin Union. There's theater events, Mini Courses, music, films, lectures, art exhibits and much more.

Outdoor enthusiasts can also enjoy the Union. There's downhill skiing & snowboarding and cross-country skiing through Hoofer clubs and Outdoor Rentals.

Take a look inside and see what's here for you.



THE WISCONSIN UNION

F R E E M U S I C

SUNDAYS

Bagels n' Bach

Classical music to brunch by.
Lakefront Cafeteria, Memorial Union
10-11:30 a.m.

TUESDAYS

Mornings with Mozart

Enjoy breakfast with live, classical music
Lakefront Cafeteria, Memorial Union
9-10:30 a.m.

THURSDAYS

Open Mic

Students entertaining students.
Rathskeller, Memorial Union
8-11 p.m.

FRIDAYS

Behind the Beat...Live Jazz

Rathskeller, Memorial Union
4-6 p.m.

TGIF

Live music.
Rathskeller, Memorial Union
9 p.m.-midnight.

Jazz Hot Off the Grill

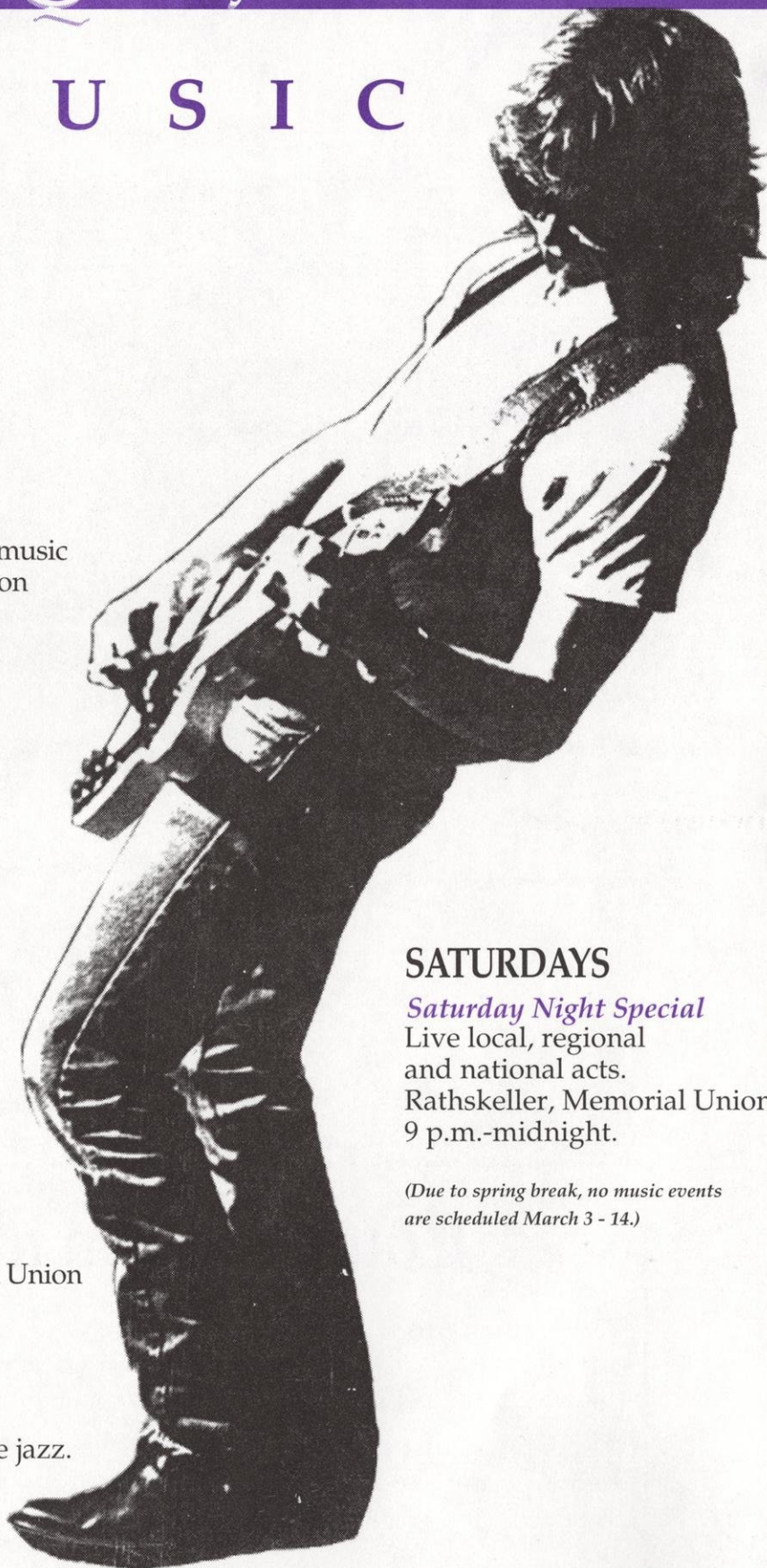
An outstanding series of free live jazz.
Red Oak Grill, Union South
9 p.m.-midnight.

SATURDAYS

Saturday Night Special

Live local, regional
and national acts.
Rathskeller, Memorial Union
9 p.m.-midnight.

*(Due to spring break, no music events
are scheduled March 3 - 14.)*



WISCONSIN UNION THEATER WINTER/SPRING EVENTS



CONCERT SERIES EVENTS

Thurs., Feb. 25 • 8 p.m.
**LAFAYETTE STRING
QUARTET**

This concert is presented in cooperation
with the UW-Madison School of Music as
part of a week-long celebration of
Women in Music.

Tickets \$17.00

UW-Madison Students \$8.50

Fri., Mar. 19 • 8 p.m.
SCOTT YOO

(Debut Recital), *violin*

Tickets \$16.00

UW-Madison Students \$8.00

Tues., Apr. 20 • 8 p.m.

JULIAN BREAM,

guitar and lute

Tickets \$19.00

UW-Madison Students \$9.50



Lafayette String Quartet

Mon., Apr. 25 • 2 p.m.
**MILWAUKEE SYMPHONY
ORCHESTRA,**

Zdenek Macal, *Music Director & Conductor*

A Bassett Performance Series event supported by the
Norman Bassett Foundation.

Tickets \$19.00

UW-Madison Students \$9.50



The King's Singers

Thurs., Mar. 25 • 8 p.m.

THE PARSONS DANCE CO.

Dance on Tour 1992 - 93

Tickets \$18.50 & \$16.50

UW-Madison Students \$9.25 & \$8.25

Fri., Apr. 30 • 8 p.m.

THE KING'S SINGERS

Tickets \$18.50 & \$16.50

UW-Madison Students \$9.25 & \$8.25

TRAVEL ADVENTURE FILMS

Mon., Tues. & Wed., Feb. 1, 2 & 3

7:30 p.m.

ICELAND - EUROPE'S OUTBACK,

Produced and narrated live by Rick Ray

Tickets \$6.50

Mon., Tues. & Wed., Feb. 15, 16 & 17

7:30 p.m.

PORTUGAL,

Produced and narrated live by David Morrish

Tickets \$6.50

Mon., Tues. & Wed., Mar. 15, 16 & 17

7:30 p.m.

THE BIBLE LANDS

(from the Nile to the Euphrates),

Produced and narrated live by Jean-Luc Sterckx

Tickets \$6.50

SPECIAL EVENT

Sat., Jan. 30 • 8 p.m.

"Actors of the London Stage"

in Shakespeare's *The Tempest*

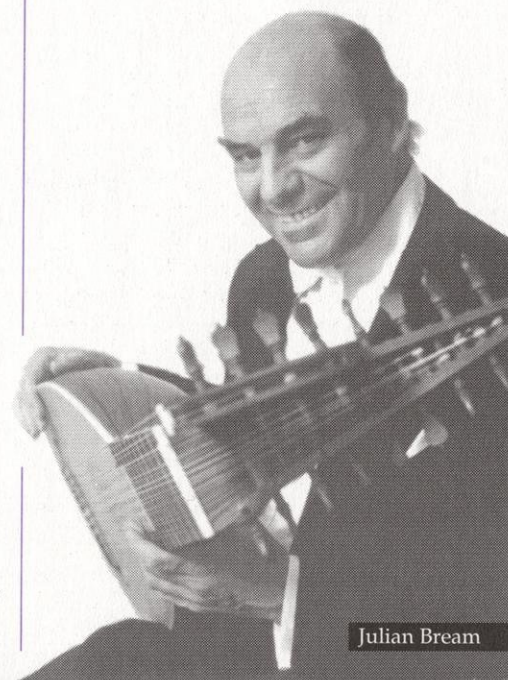
This presentation is a joint project of the Wisconsin
Union Theater with funding through the H. Douglas
and Elizabeth B. Weaver Fund for the Performance Arts.

Tickets \$5.00.

TICKET INFORMATION

Tickets for spring individual events go on
sale at 11:30 a.m. on January 19, 1993 or
earlier by mail order.

Mail order forms may be found in the
Theater's SPOTLIGHT bulletin. If you wish
to have SPOTLIGHT mailed to you on a
regular basis or have not yet received the
current bulletin, please notify the Member-
ship Office at (608) 262-2263. For theater
information phone the Union Theater at
(608) 262-2201.



Julian Bream

PERFORMANCE SERIES EVENTS

Wed., Feb. 10 • 8 p.m.

ODO, 12-man percussion ensemble from
Sado Island in the Sea of Japan

Tickets \$21.50 & \$19.50

UW-Madison Students \$10.75 & \$9.75

HOOFER YOUTH SAILING PROGRAM

Registration is open for the summer Hooper Youth Sailing Program. A variety of beginning and intermediate sailing and beginning windsurfing classes are available for youths ages 10 to 17. The two-week classes begin June 14 and continue through July 30 and are limited to children of either UW-Madison students, Wisconsin Union members or faculty/staff of UW-Madison.

For children of UW-Madison students or Wisconsin Union members, fees are \$75; for children of UW-Madison faculty or staff, fees are \$93.75. Space is limited and early registration is recommended. Call the Wisconsin Union Hooper Office at (608) 262-1630 for registration information.

DISTINGUISHED LECTURE SERIES 1992-93

Tuesday, Mar. 2

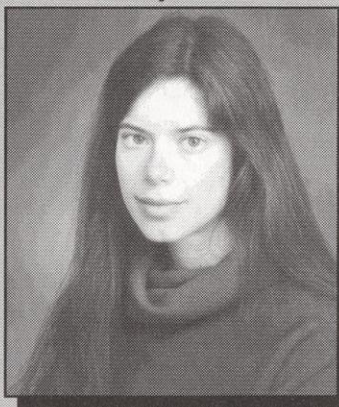
Tuesday, March 2 - 7:30 p.m.
Conservative activist **Phyllis Schlafly** has been listed many times by the *World Almanac* as one of the most influential women in the United States. Known for being a major force behind the defeat of the Equal Rights Amendment, she's written books on national defense, education, feminism & family and pornography. Presently she writes a syndicated newspaper column and is heard on radio. Her book, *A Choice Not an Echo*, has sold more than 3 million copies.



Phyllis Schlafly
Union Theater

Tuesday, Mar. 23

Tuesday, March 23 - 7:30 p.m.
Susan Faludi challenges the notion that feminism has become women's worst enemy and addresses issues facing women today. Her book *Backlash: The Undeclared War Against American Women* has been an international best seller and was the winner of the National Book Critics Circle Award.



Susan Faludi
Union Theater

The Distinguished Lecture Series is presented to you by the Wisconsin Union Directorate's Ideas & Issues Committee. All lectures are free and tickets are not necessary. For information, phone (608) 262-2216 or stop by room 507, Memorial Union.

HOOFER WINTER SCHEDULE

January 20

Riding Club Kickoff

7 p.m., Bradley Hooper Lounge, Memorial Union

January 21

Scuba Club Kickoff

7 p.m., Memorial Union

January 26

Outing Club Kickoff

7 p.m., Great Hall, Memorial Union

January 28

Ski Club Kickoff

7 p.m., Great Hall, Memorial Union

February 13

Snowball

Semi-formal ball open to the public, 9 p.m. - midnight, Great Hall, Memorial Union

April 15

Sailing Club Spring Kickoff

8 - 11 p.m., Tripp Commons, Memorial Union

May 27

Sailing Club Summer Kickoff

8 - 11 p.m., Tripp Commons, Memorial Union

June 9

Riding Club Summer Kickoff

7 p.m., Bradley Hooper Lounge, Memorial Union

For more information about Wisconsin Hoopers, you may call (608) 262-1630.

HOOFS OCEAN ADVENTURE SERIES

January 21

Flirting with Mermaids

A slide show presentation by John Kretschmer of sailing adventures on the high seas, 7:30 p.m., Wisconsin Union Theater, Memorial Union.

February 24

A Spring Victory in San Diego

A slide presentation by Jerry Kirby of the 1992 America's Cup - a view from the bow, 7:30 p.m., Wisconsin Union Theater, Memorial Union.

IN THE GALLERIES

January 29 - February 28
Photographs by Judith Garcia
 Theater Gallery
 (Reception: January 28, 7 p.m.)

January 29 - February 28
Americanism: Breaking the Mold
 A selection of artists of color from all over the United States visually present their respective cultural realities, Porter Butts Gallery (Reception: January 28, 7 p.m.)

January 29 - February 28
The Invisible Thread
 Photographs taken by Lori Grinker and Diane Bletter are based on the Jewish-American female experience, Class of 1925 Gallery (Reception: January 28, 7 p.m.)

March 5 - April 1
Sticks!
 Lynn Slattery Helmuth uses sticks as imagery, theme, media, metaphor and as a spiritual object, Porter Butts and Class of 1925 Galleries (Reception: March 4, 7 p.m.)

March 5 - April 1
At Home Alone
 This photo documentation discusses the stereotypes and family pressures on women today, Theater Gallery (Reception: March 4, 7 p.m.)

April 9 - May 2
65th Annual Student Art Show
 Open to all UW-Madison students, this competitive art exhibition allows the opportunity to show work publicly, Porter Butts, Class of 1925 and Theater Galleries (Reception: April 8, 7 p.m.)

May 8 - May 15
Alchemy
 Minimalism and decadently indulgent sensual beauty are featured in works presented by Ann Stretton, Porter Butts Gallery (Reception: May 7, 7 p.m.)

The Porter Butts and Class of 1925 Galleries are open daily from 10 a.m. to 6 p.m. and are located on the second floor of Memorial Union. The Theater Gallery is located on the first and second floors of Memorial Union's theater wing and is open during regular business hours. Exhibits are subject to change. For more information call (608) 262-5969.

14TH ANNUAL ESCAPE TO WABAKIMI

For the past 14 years Union members have been venturing through the pristine wilderness of Canada on the Travel Center's annual Escape to Wabakimi. The trips are designed to challenge beginners and experts alike; many participants return year after year. Each trip begins with a comfortable van ride from Madison to Armstrong, Ontario, and continues with a float plane ride into the Canadian wilds, Redmond Lake or Palisade River.

This year's trips are \$440 per person and run from July 9 to July 18, July 30 to August 8, August 6 to August 15, August 13 to August 22 and August 21 to August 29.

To learn more about Escapes to Wabakimi, call the Travel Center at (608) 262-6200, stop by their office on the fourth floor of Memorial Union or attend an informational slide presentation on Wednesday, February 24, Thursday, March 25 or Tuesday, April 13. All slide shows begin at 7 p.m. in Memorial Union.



WISCONSIN UNION TAKE-OUT

Wisconsin Union Take Out is available to UW-Madison students, faculty and staff and Union members. The Deli Sweet Shop provides party platters, box lunches, main meals, side orders, beverages and desserts including its famous fudge bottom pie for your party needs. Take the hassle out of your party preparations and let Wisconsin Union Take Out do the work for you! For more information or to place an order, call the Deli at (608) 262-5959, Mon. - Fri., 9 a.m. - 5 p.m.

ART FAIR ON THE TERRACE

10 a.m. - 6 p.m.
 Friday, April 30 and
 Saturday, May 1



CRAFTSHOP

In the southwest corner of Memorial Union on the fourth floor is the "Creative Zone" or Union Craftshop. Available to UW-Madison students, faculty, staff and Wisconsin Union members, the Craftshop provides tools and supplies for a woodshop, a darkroom, ceramics, framing and matting, batik, art metal/jewelry, stained glass and many other activities.

For the inexperienced, the Wisconsin Union Mini Course office works hand-in-hand with the Craftshop teaching new skills.

Craftshop permit fees are:

UW STUDENTS AND UNION MEMBERS
 \$1.50 per hour
 \$35.00 per semester
 \$20 per 1/2 semester

UW-MADISON FACULTY AND STAFF

\$1.75 per hour
 \$40.00 per semester
 \$22.50 per 1/2 semester

Summer session permits are sold at reduced prices. The Craftshop is open each semester and summer session and is closed during University breaks and holidays.

Hours of operation are:

Sunday - Thursday 1 p.m. - 10 p.m.
 Friday & Saturday 1 p.m. - 5 p.m.
 For more information call (608) 262-1282.

M O V I E S

LAKESIDE FREE CINEMA

Mondays at 8 p.m.
Rathskeller, Memorial Union

Jan. 25 **DRUGSTORE COWBOY**
Feb. 1 **NAME OF ROSE**
Feb. 8 **DR. STRANGELOVE**
Feb. 15 **KELLY'S HEROES**
Feb. 22 **HIGH NOON**
Mar. 1 **SAY ANYTHING**

STARLIGHT FREE CINEMA

Thursdays at 8 p.m.
Room 109, Union South

Feb. 4 Sonic Youth Evening
THE YEAR PUNK BROKE
(91 Tour Documentary)
TUNIC (uncensored)
SCOOTER & JINX
(a.k.a. Money Love)
TEENAGE RIOT
DEATH VALLEY 69

Feb. 11 **KAMIKAZE HEARTS**
Documentary: lesbian
prostitute heroin addicts.

Feb. 18 An Evening with Filmmaker
Richard Kern, Karen Finely,
J.G. Thirwill (foetus), Lydia
Lunch, Henry Rollins, Lung
Leg, and many others, music
by Kill dozer, Butthole
Surfers and Foetus.

Feb. 25 The Early Films of
Peter Greenaway
WINDOWS
HIS FOR HOUSE
DEAR PHONE
WATER WRACKETS
A WALK THROUGH H
VERTICAL FEATURES
REMAKE
INTERVALS

Mar. 18 **WOMEN IN PERFORMANCE**
SPINXES W/O SECRETS
PARANOID
SCHIZOID POSITION
MODEL RELEASE
TEST
MADE FOR TV

Mar. 25 An Evening of Animation
On the Stranger Side
MARQUIS
ARE WE STILL MARRIED
THE COMB
ANAMORPHOSIS

Apr. 1 Weird and Current
TETSUO (Iron Man)
DRUM STRUCK
WAX

Apr. 15 To Be Announced

MEMORIAL UNION MOVIES

Fridays, Saturdays and Sundays • \$2.50
Play Circle, Second Floor, Memorial Union

Jan. 22-24
OTHELLO
Fri. 5, 7 & 9 p.m.
Sat. and Sun. 7 & 9:30 p.m.
132 min.

Orson Welles directs and stars in
Shakespeare's *Othello*. A completely
remastered print gives new life to all the
theatrical and cinematic power of this
neglected masterpiece.

Jan. 29-31
CASABLANCA
Fri. 5, 7 & 9:15 p.m.
Sat. and Sun. 7 & 9:15 p.m.
102 min.
As time goes by, "a classic is still a classic,"
and *Casablanca* is still the greatest screen
romance of all time. A newly restored print
lets a new generation join Bogart, Bergman
and all the gang at Rick's.

Feb. 5-7
BEST INTENTIONS

Fri., Sat. and Sun. 5:30 & 9 p.m.
182 min.

Ingmar Bergman's screenplay chronicles the
full sweep of the courtship and rocky
marriage of his passionate parents. Directed
by Bille August (*Pelle the Conqueror*) this film
won the 1992 Best Film and Best Actress
Award at Cannes.

Feb 12-14
GAS FOOD LODGING

Fri. 5, 7 & 9:15 p.m.
Sat. and Sun. 7 & 9:15 p.m.
102 min.

Allison Anders draws from her own life to
create an honest look at a single mother and
her two daughters (Ione Skye and Fairuza
balk). As part of *Americanism Month*, this
simply powerful film gives us a real look at
a contemporary family.

Feb 19-21
ADAM'S RIB

Fri. 5, 7 & 9 p.m.
Sat. and Sun. 7 & 9
77 min.

An intimate comedy that centers on a
household of four women dealing with their
romantic and economic entanglements in a
large Russian city. This sharp-edged
personal story has wide reaching signifi-
cance in today's post-glasnost world.

Feb 26-28
FLIRTING

Fri. 5, 7 & 9:15 p.m.
Sat. and Sun. 7 & 9:15 p.m.
100 min.

Two boarding school outsiders form a
unique friendship that blossoms into
romance - the fact that he's white and she's
black doesn't seem to matter to them. A
sweet, sexy, funny coming-of-age story from
Australia that's taking the critics by storm.

MINI COURSES

Experience winter and spring with Mini Courses and choose from over 300 classes! Take a walk with an experienced naturalist in the *Celebrate Winter Hike*, learn *Cross Country Ski Basics* or forget about the cold with *Shaker Baskets* or *Basic Woodworking*.

With spring on the way, experiment with *Exotic Orchids* or *Ikebana: The Art of Japanese Floral Arranging*. Indulge with us for *An Evening of Chocolate* or *The Wines of Europe!* Join us for a weekend of *The Art and Culture of Maple Sugaring* in the spring and get ready for summer with *Sailboarding*, *Sailing: Theory & Practice*, *Rock Climbing* or *Wilderness Travel Skills*.

The winter term begins February 1 and the spring term on March 29. Call the Mini Course office at (608) 262-3156 for a catalog and take advantage of these great opportunities.

BALLROOM DANCE LIVE!

The big band sound returns to Great Hall, Memorial Union, on Tuesday, April 27. Dimensions In Sound, an 18 piece orchestra provides dance music from the 30's, 40's and 50's. Music begins at 8:00 p.m. with tickets available at the door or in advance from the Mini Course office, Room 509, Memorial Union. Call (608) 262-3156 for more information.

INTERNATIONAL STUDY & TRAVEL FAIR

For the 14th year, the Wisconsin Union Directorate Travel Committee and the Union Travel Center will sponsor the International Study and Travel Fair. The fair features 50 different international work, travel, study and volunteer organizations who will be on hand to discuss their programs and answer questions. In addition, door prizes such as airline tickets and a Eurailpass will be awarded throughout the day.

The Travel Fair is scheduled for Tuesday, February 23, 10 a.m. - 4 p.m. in the Great Hall at Memorial Union. For more information, call the Travel Center at (608) 262-6200.

Campus Care ♥ Packages

Do you have a special someone you would like to communicate with in an unforgettable way? The Wisconsin Union's Campus Care Package is the perfect way to...

- reassure a daughter or son away from home for the first time
- reach out during stressful and time-crunched exam periods
- help celebrate birthdays, anniversaries, etc.
- send a souvenir to someone who loves the UW.

A variety of Campus Care Packages are available to suit any occasion.

- 1. The Celebration Rations**\$14.50
White, chocolate or carrot cake for 20 with a message of your choice, complete with forks, plates and napkins.
- 2. The "Home Away From Home" Picnic Basket**\$15.00
A basket including one dozen gourmet cookies, 1 lb. of Wisconsin cheese, crackers, soda and juice.
- 3. The Souvenir**\$16.00
A basket including a Wisconsin Union T-shirt, a Wisconsin Union recyclable coffee mug and 1/2 lb of gourmet coffee.
- 4. The Gang's All Here**\$12.50
Coupons good for ten-double scoop ice cream cones.
(Coupons good for one year.)

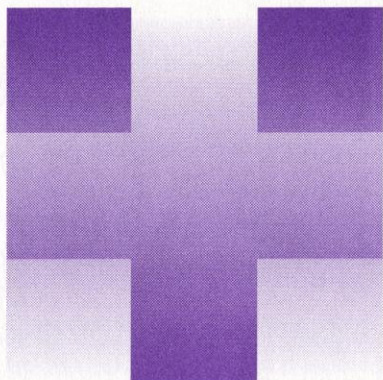
For more information
or to place an order, please contact the
Memorial Union Deli, 800 Langdon St., Madison, WI 53706, (608)262-5959.

VISITOR INFORMATION PLACE

The Visitor Information Place located next to the Union Theater will be opening in mid January. The office provides information about available resources on campus including parking, maps, brochures and campus handouts. The Information Place is a walk-up or drive-up facility and is connected to the Campus Assistance Center through computer terminals. The hours of operation are:

Monday - Friday	7 a.m. - 8 p.m.
Saturday	10 a.m. - 6 p.m.
Sunday	noon - 4 p.m.

For more information about the Visitor Information Place call the Campus Assistance Center at (608) 263-2400.



LEARN CPR AND FIRST AID

Learn CPR and First Aid through Mini Courses and the American Red Cross and become certified in adult or community CPR. A variety of sessions are being offered February through April. Details are in the Winter/Spring Mini Course catalog or call (608) 262-3156 for more information.

ALL CAMPUS BLOOD DRIVE

The holidays are over but you can keep on giving! The all campus blood drive is Tuesday, January 19 - Friday, January 29, at Youngblood, Room 319, Union South, (608) 263-4590. Hours for the Youngblood Blood Donation Center are Mon., Wed., Fri., noon - 4 p.m. and Tues., Thurs., 2 p.m. - 6 p.m.

CHILDREN'S PROGRAMS

Live entertainment and creative projects are being offered at Union South for children ages 3 - 6. The programs will be held in room 109, 10:30 a.m. - 12:30 p.m., Saturdays, Jan. 30, Feb. 27 and April 3. Program topics are yet to be determined. You may call (608) 263-2432 for more information.

IMAGINATION STATION

Fun, educational programs including creative, interactive projects focusing around a particular theme are offered at

Union South for children ages 3 - 6. Programs will be held in room 109, 10:30 a.m. - noon, Saturdays, Feb. 13, March 20, and April 24. For more information call (608) 263-2432.

DANE COUNTY BADGERS VOLUNTEER DAY

Saturday, May 1, 8 a.m. - 7 p.m.

An unprecedented all-university event, sponsored by the Wisconsin Alumni Association, the Wisconsin Union and numerous other university departments, will mobilize local alumni, faculty and students to volunteer for a hands-on experience in areas such as sprucing up a homeless shelter, collecting and sorting food for a pantry or helping with home chores for the elderly.

Three breakfasts, 7:30 a.m. - 9:00 a.m., January 21, February 17 and March 18, Great Hall, Memorial Union, will kick off the volunteer initiative, informing alumni of the needs in the Dane County area. Breakfast prices are \$7.50 for either members of the Union or the Wisconsin Alumni Association and \$9.50 for all others. For more information about this community service outreach day, you may call the Wisconsin Alumni Association at (608) 262-2551 or watch for details in Alumni Association publications or in local newspapers.

RENOVATION UPDATE

Phase II of the Memorial Union renovation is nearly complete. The men's and women's bathrooms in the Trophy Room are open and the store, Essentials, will be open in the first few weeks of January. Essentials will sell UW and Union memorabilia, clothing and various other items including cans of soda, mineral water, candy, bagged chips, newspapers and magazines. The phone number for Essentials is (608) 262-1583.

The location of Outdoor Rentals has moved to ground floor, Memorial Union, just

outside the Games Room. Outdoor Rentals has also taken over some services provided by the Service Center such as UPS, fax, film processing and check cashing. The phone number to Outdoor Rentals remains (608) 262-7351.

At the top of the list for next year's projects is updating the appearance of the Trophy Room and the Park Street entrance to Memorial Union. A new look for the Games Room at Union South can also be expected in the coming semesters.

WISCONSIN UNION DIRECTORY

Catering	MU 262-1631 or 263-1717 US 263-7306
Craftshop	262-1282
Games Room	MU 262-1330 US 263-2514
Hoofers	262-1630
Hotel	MU 262-1583 US 263-2600
Information Desk	MU 262-1331 or 262-2511 US 263-2600
Membership	262-2263
Mini Courses	262-3156 or 262-5771
Outdoor Rentals	262-7351
Room Reservations	MU 262-2511 US 263-2543
Store, Essentials	MU 262-1583
Store, Corner Store	US 263-3960
Theater Box Office	262-2201
Travel Center	262-6200

Editor: Sue Jebson
Writer: Julie Spragia
Layout: Memorial Union Graphics Dept.



THE WISCONSIN UNION

University of Wisconsin-Madison
Memorial Union, 800 Langdon St.
Madison, WI 53706-1495

Address Correction Requested

Non-Profit Org
U.S. Postage
PAID
Madison, Wisconsin
Permit No. 84