



LIBRARIES

UNIVERSITY OF WISCONSIN-MADISON

The colonial architecture of Maryland, Pennsylvania, and Virginia. 1900

Chandler, Joseph Everett

Boston: Bates & Guild Company, 1900

<https://digital.library.wisc.edu/1711.dl/KEAEPL5OPUXJE8R>

<http://rightsstatements.org/vocab/UND/1.0/>

For information on re-use see:

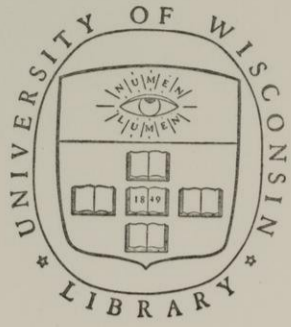
<http://digital.library.wisc.edu/1711.dl/Copyright>

The libraries provide public access to a wide range of material, including online exhibits, digitized collections, archival finding aids, our catalog, online articles, and a growing range of materials in many media.

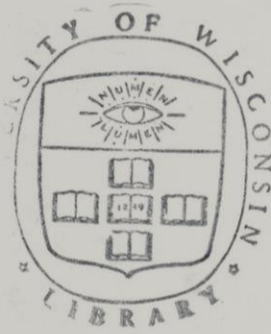
When possible, we provide rights information in catalog records, finding aids, and other metadata that accompanies collections or items. However, it is always the user's obligation to evaluate copyright and rights issues in light of their own use.

*The
Colonial
Architecture
of
Maryland
Pennsylvania and
Virginia
—
Chandler*

*Boston
Watson & Guild Company
1900*



FROM THE ESTATE OF
FRANK MORRIS RILEY
ARCHITECT
1875-1949



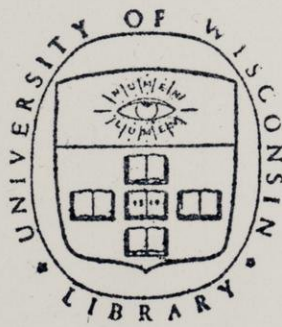
The
Colonial Architecture
of
Maryland
Pennsylvania and
Virginia

50 Plates
Photographed and Arranged
under the direction of
Joseph Everett Chandler ed.
Architect

Boston
Bates & Guild Company
1900

Copyright 1899
By Joseph Everett Chandler.

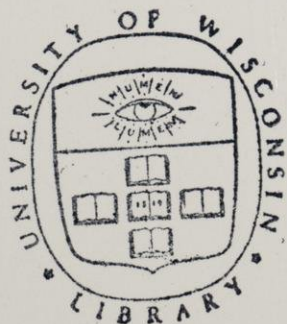
Third Edition.



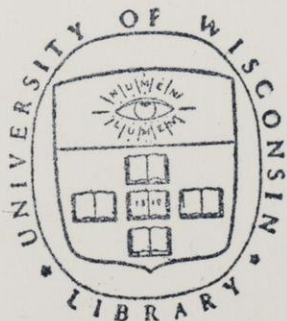
List of Plates.

1. The Courts House, Williamsburgh, Va.; designed by Sir Christopher Wren.
2. Farmington, Charlottesville, Va.; designed by Thomas Jefferson.
3. Arnold Mansion, Fairmount Park, Philadelphia; built 1761.
4. Upsal, Germantown, Pa.; built in 1798.
5. Doorway of Bockiss House, Germantown, Pa.
Doorway of Dr. Dunton's House, Germantown, Pa.
6. Woodfern Mansion, Fairmount Park, Philadelphia; built in 1734.
Cliveden, Germantown, Pa.; built by Benjamin Chew in 1763.
7. Homewood, Baltimore County, Md.; built about 1780.
8. Bear of Homewood, Baltimore County, Md.
9. Homewood Stable, Baltimore County, Md.
10. Front Porch of Homewood, Baltimore County, Md.
11. Hall Doorway, Homewood, Baltimore County, Md.
12. Mantel in Homewood, Baltimore County, Md.
13. Mantel in Homewood, Baltimore County, Md.
14. Mantel in the Bockiss House, Germantown, Pa.
Mantel in Homewood, Baltimore County, Md.
15. Dining Room, Homewood, Baltimore County, Md.
16. The Harwood House, Annapolis, Md.; built about 1770 by Mr. Buckland.
17. White Hall, Anne Arundel County, Md.; built between 1740 and 1750.

18. Doorway in Baltimore, Md.
Doorway of the Lloyd House, Alexandria, Va.; built in 1796.
19. Detail of Doorhead in White Hall, Anne Arundel County, Md.
20. Front and Rear Doors of the Chase House, Annapolis, Md.;
built in 1770.
21. Dining Room Door, Chase House, Annapolis, Md.
22. Stairway of the Chase House, Annapolis, Md.
23. Detail of Hall Window, Chase House, Annapolis, Md.
24. Mantel in Dr. Grim's House, Baltimore, Md.
Doorway in White Hall, Anne Arundel County, Md.
25. House of the Sisterhood of Notre Dame, Annapolis, Md.;
built about 1750.
26. Hallway Arch, House of the Sisterhood of Notre Dame,
Annapolis, Md.
27. Hall of the House of the Sisterhood of Notre Dame, An-
napolis, Md.
28. Stair Landing, Carter's Grove Hall, James River, Va.
Drawing Room, House of the Sisterhood of Notre Dame,
Annapolis, Md.
29. Detail of Doorhead in Dining Room, Gunston Hall, Va.;
built about 1757 by George Mason.
Detail of Stairs, House of the Sisterhood of Notre Dame,
Annapolis, Md.
30. Mantel in the Lord Fairfax House, Alexandria, Va.; built
between 1780 and 1790.
Hallway of Carter's Grove Hall, James River, Va.; built
in 1739.
31. Drawing Room Mantel, Brice House, Annapolis, Md.
32. Mantel in Dr. Grim's House, Baltimore, Md.
33. Mantel in Huntingdon, Baltimore County, Md.
34. Garden Front of the Poidout House, Annapolis, Md.; built
in 1750.



35. Doorway of Gazanove, Alexandria, Va.; built about 1806.
36. Mantel in Gazanove, Alexandria, Va.
37. Detail of Mantel in Gazanove, Alexandria, Va.
38. Hallway of Gazanove, Alexandria, Va.
Hallway of Westover, James River, Va.
39. Gates at Westover, James River, Va.
40. Shirley, built in 1650, porches added about 1800; and Westover,
built by William Bird 1737; James River, Va.
41. Doorway of the Harwood House, Annapolis, Md.
Doorway of Westover, James River, Va.
42. Lost Finials at Westover, James River, Va.
Statue of Gov. Worborne Berkeley, Williamsburgh, Va.;
erected in 1771.
43. Doorway on Prince St., Alexandria, Va.; built about 1815.
Porch in Fredericksburgh, Va.
44. Front and Side Entrances of the Old Maryland Club House,
Baltimore, Md.
45. Campus Front of the University of Virginia, Charlottesville,
Va.; begun in 1817 from designs by Thomas Jefferson.
46. Street Front of the University of Virginia, Charlottesville, Va.
47. House and Dormitories on the Campus, University of
Virginia, Charlottesville, Va.
48. House and Dormitories on the Campus, University of
Virginia, Charlottesville, Va.
49. House on the Campus, University of Virginia, Charlottes-
ville, Va.
50. House on the Campus, University of Virginia, Charlottes-
ville, Va.



*The Colonial Architecture of
Maryland, Pennsylvania, and Virginia.*



Plate 1.

The Court House, Williamsburgh, Va.

*The Colonial Architecture of
Maryland, Pennsylvania, and Virginia.*



Plate 2.

Farmington, Charlottesville, Va.

*The Colonial Architecture of
Maryland, Pennsylvania, and Virginia.*



Plate 3.

Arnold Mansion, Fairmount Park, Philadelphia.

*The Colonial Architecture of
Maryland, Pennsylvania, and Virginia.*



Plate 4.

Upsal, Germantown, Pa.

*The Colonial Architecture of
Maryland, Pennsylvania, and Virginia.*

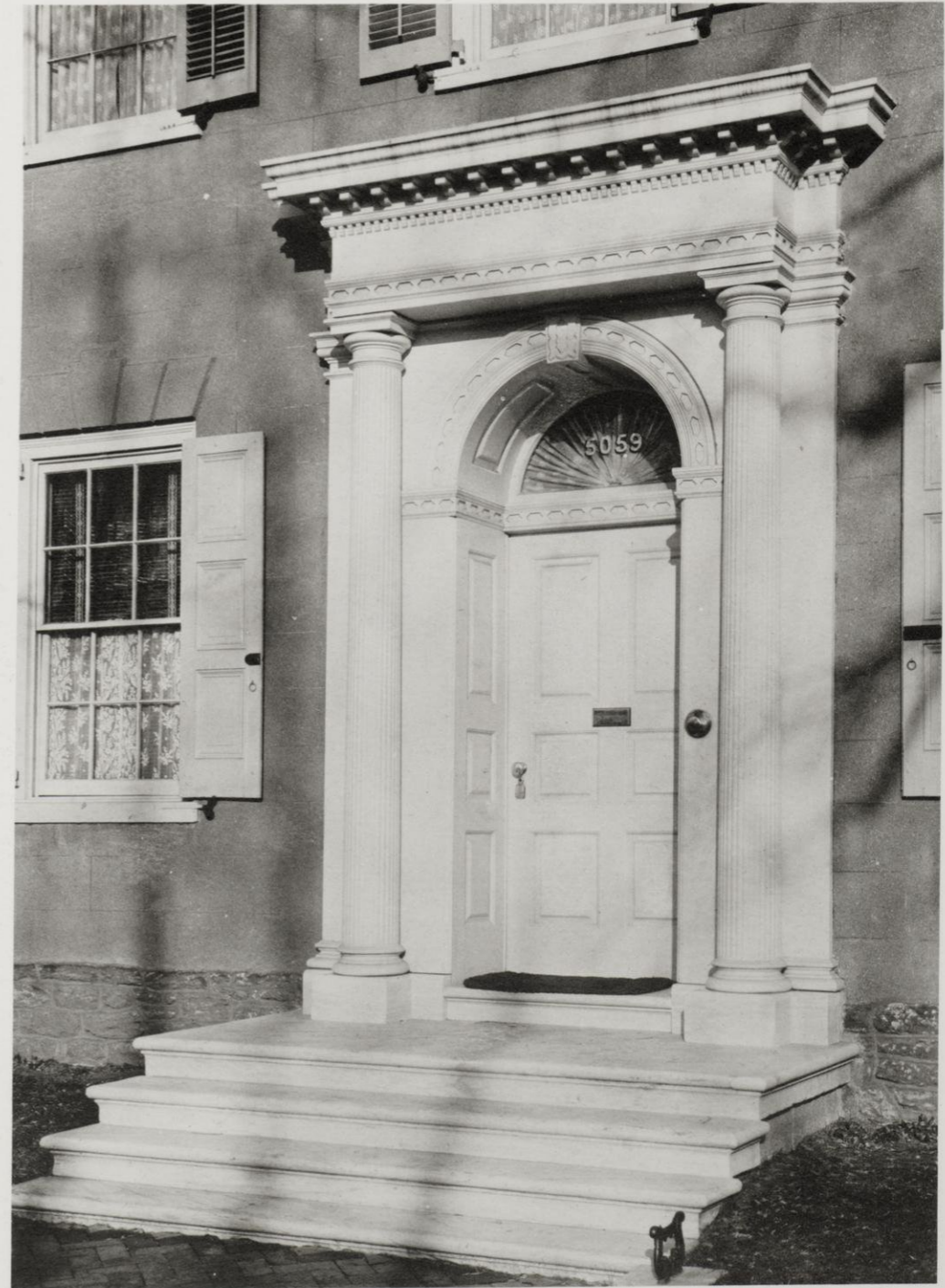


Plate 5.

Doorway of Bockiss House.

Germantown, Pa.

Doorway of Dr. Dunton's House.

*The Colonial Architecture of
Maryland, Pennsylvania, and Virginia.*



Plate 6.

Woodfern Mansion, Fairmount Park, Philadelphia.

Cliveden, Germantown, Pa.

*The Colonial Architecture of
Maryland, Pennsylvania, and Virginia.*



Plate 7.

Homewood, Baltimore County, Md.

*The Colonial Architecture of
Maryland, Pennsylvania, and Virginia.*



Plate 8.

Pear of Homewood, Baltimore County, Md.

*The Colonial Architecture of
Maryland, Pennsylvania, and Virginia.*



Plate 9.

Homewood Stable, Baltimore County, Md.

*The Colonial Architecture of
Maryland, Pennsylvania, and Virginia.*



Plate 10.

Front Porch of Homewood, Baltimore County, Md.

*The Colonial Architecture of
Maryland, Pennsylvania, and Virginia.*



Plate 11.

Hall Doorway, Homewood, Baltimore County, Md.

*The Colonial Architecture of
Maryland, Pennsylvania, and Virginia.*



Plate 12.

Mantel in Homewood, Baltimore County, Md.

*The Colonial Architecture of
Maryland, Pennsylvania, and Virginia.*



Plate 13.

Mantel in Homewood, Baltimore County, Md.

*The Colonial Architecture of
Maryland, Pennsylvania, and Virginia.*



Plate 14.

*Mantel in the Bockiss House, Germantown, Pa.
Mantel in Homewood, Baltimore County, Md.*

*The Colonial Architecture of
Maryland, Pennsylvania, and Virginia.*



Plate 15.

Dining Room, Homewood, Baltimore County, Md.

*The Colonial Architecture of
Maryland, Pennsylvania, and Virginia.*



Plate 16.

The Harwood House, Annapolis, Md.

*The Colonial Architecture of
Maryland, Pennsylvania, and Virginia.*



Plate 17.

White Hall, Anne Arundel County, Md.

*The Colonial Architecture of
Maryland, Pennsylvania, and Virginia.*



Doorway in Baltimore, Md.



Doorway of the Lloyd House, Alexandria, Va.

*The Colonial Architecture of
Maryland, Pennsylvania, and Virginia.*

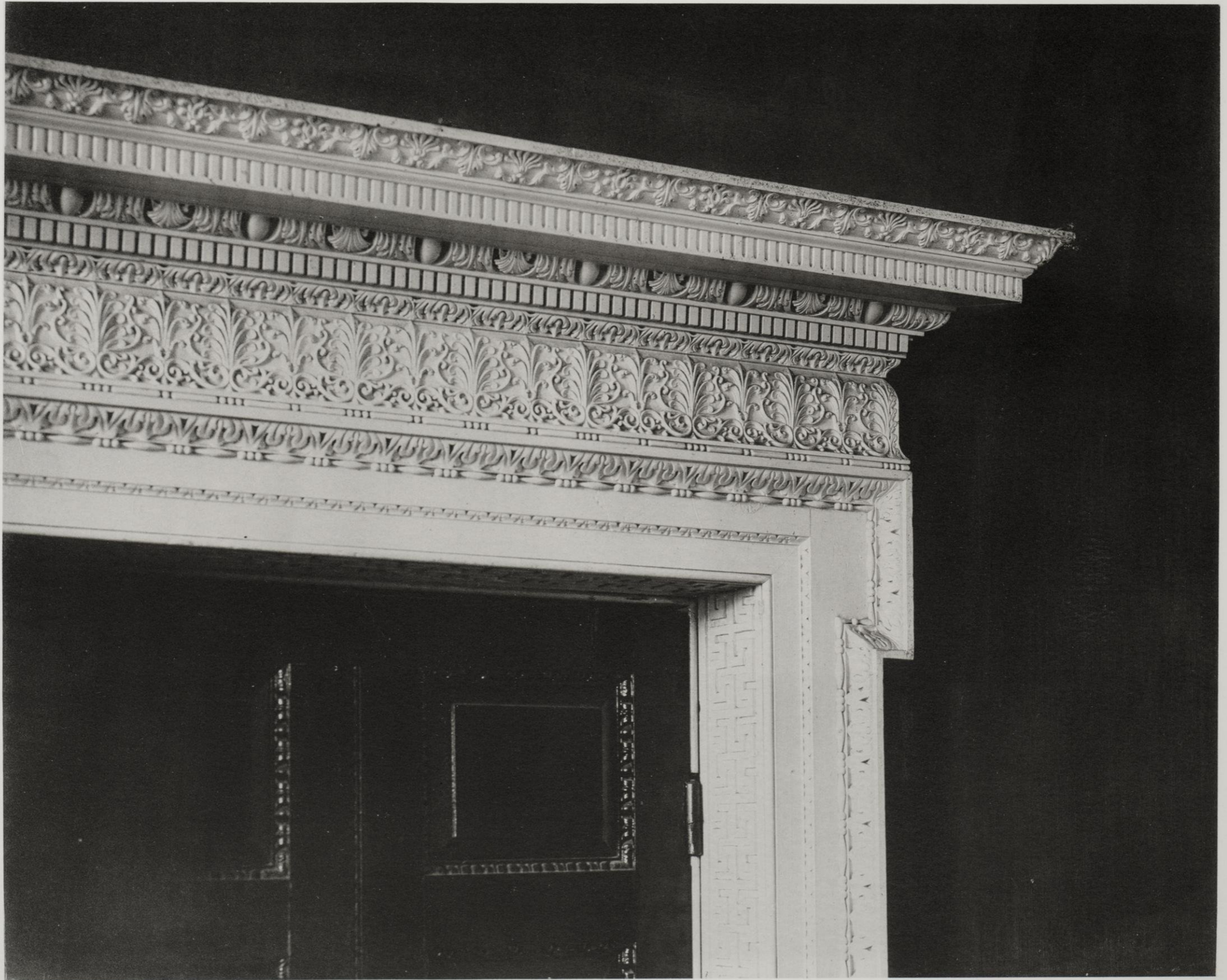


Plate 19.

Detail of Doorhead in White Hall, Anne Arundel County, Md.

*The Colonial Architecture of
Maryland, Pennsylvania, and Virginia.*



Plate 20.

Front and Rear Doors of the Chase House, Annapolis, Md.

*The Colonial Architecture of
Maryland, Pennsylvania, and Virginia.*



Plate 21.

Dining Room Door, Chase House, Annapolis, Md.

*The Colonial Architecture of
Maryland, Pennsylvania, and Virginia.*



Plate 22.

Stairway of the Chase House, Annapolis, Md.

*The Colonial Architecture of
Maryland, Pennsylvania, and Virginia.*



Plate 23.

Detail of Hall Window, Chase House, Annapolis, Md.

*The Colonial Architecture of
Maryland, Pennsylvania, and Virginia.*



Plate 24.

Mantel in Dr. Crim's House, Baltimore, Md.

Doorway in White Hall, Anne Arundel County, Md.

*The Colonial Architecture of
Maryland, Pennsylvania, and Virginia.*



Plate 25.

House of the Sisterhood of Notre Dame, Annapolis, Md.

*The Colonial Architecture of
Maryland, Pennsylvania, and Virginia.*



Plate 26.

*Hallway Arch, House of the Sisterhood of Notre Dame,
Annapolis, Md.*

*The Colonial Architecture of
Maryland, Pennsylvania, and Virginia.*



Plate 27.

Hall of the House of the Sisterhood of Notre Dame, Annapolis, Md.

*The Colonial Architecture of
Maryland, Pennsylvania, and Virginia.*



*Stair Landing, Carter's Grove Hall,
James River, Va.*



*Drawing Room, House of the Sisterhood of Notre Dame,
Annapolis, Md.*

*The Colonial Architecture of
Maryland, Pennsylvania, and Virginia.*

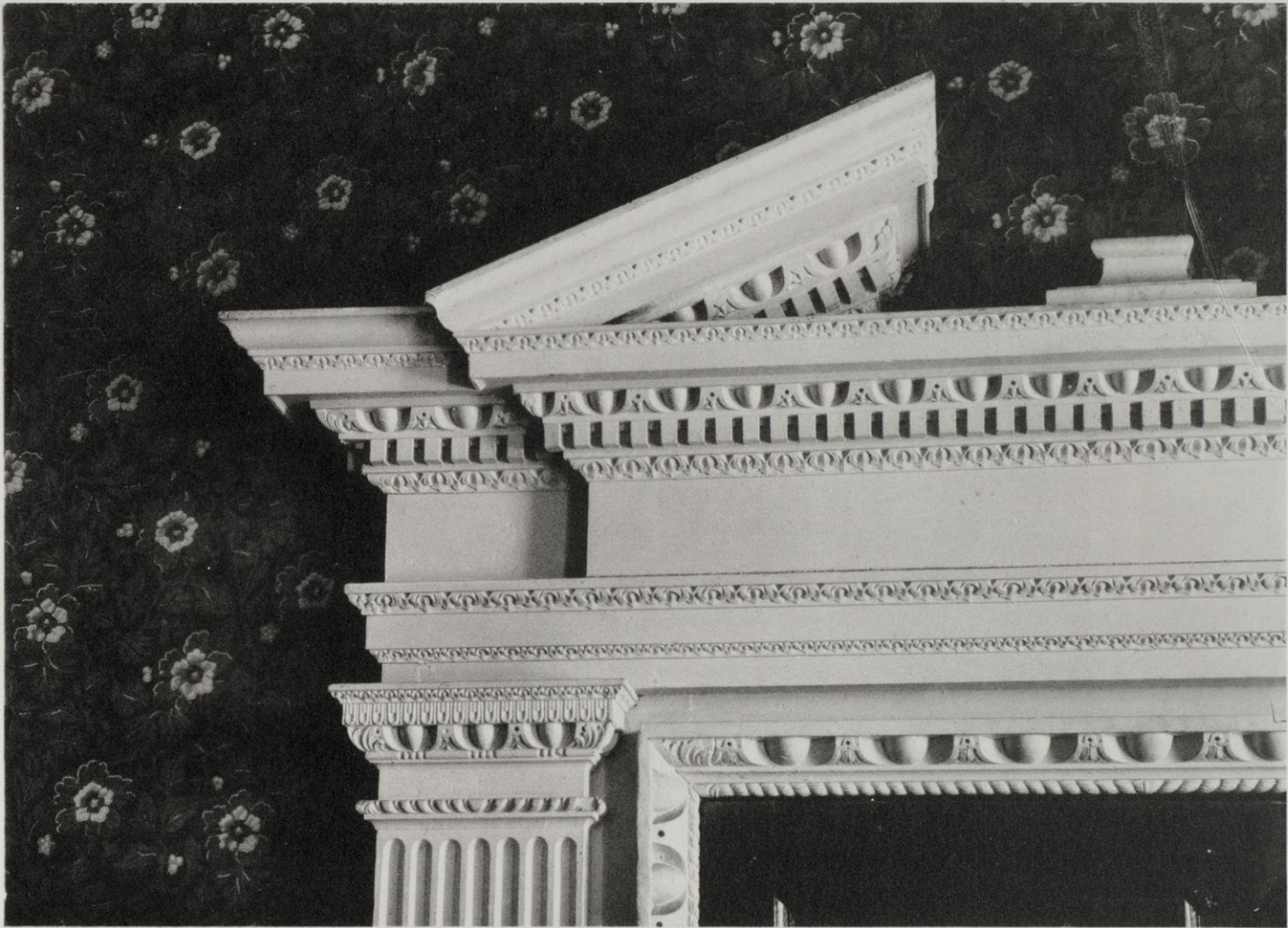


Plate 29.

*Detail of Doorhead in Dining Room, Gunston Hall, Va.
Detail of Stairs, Sisterhood of Notre Dame, Annapolis, Md.*

*The Colonial Architecture of
Maryland, Pennsylvania, and Virginia.*

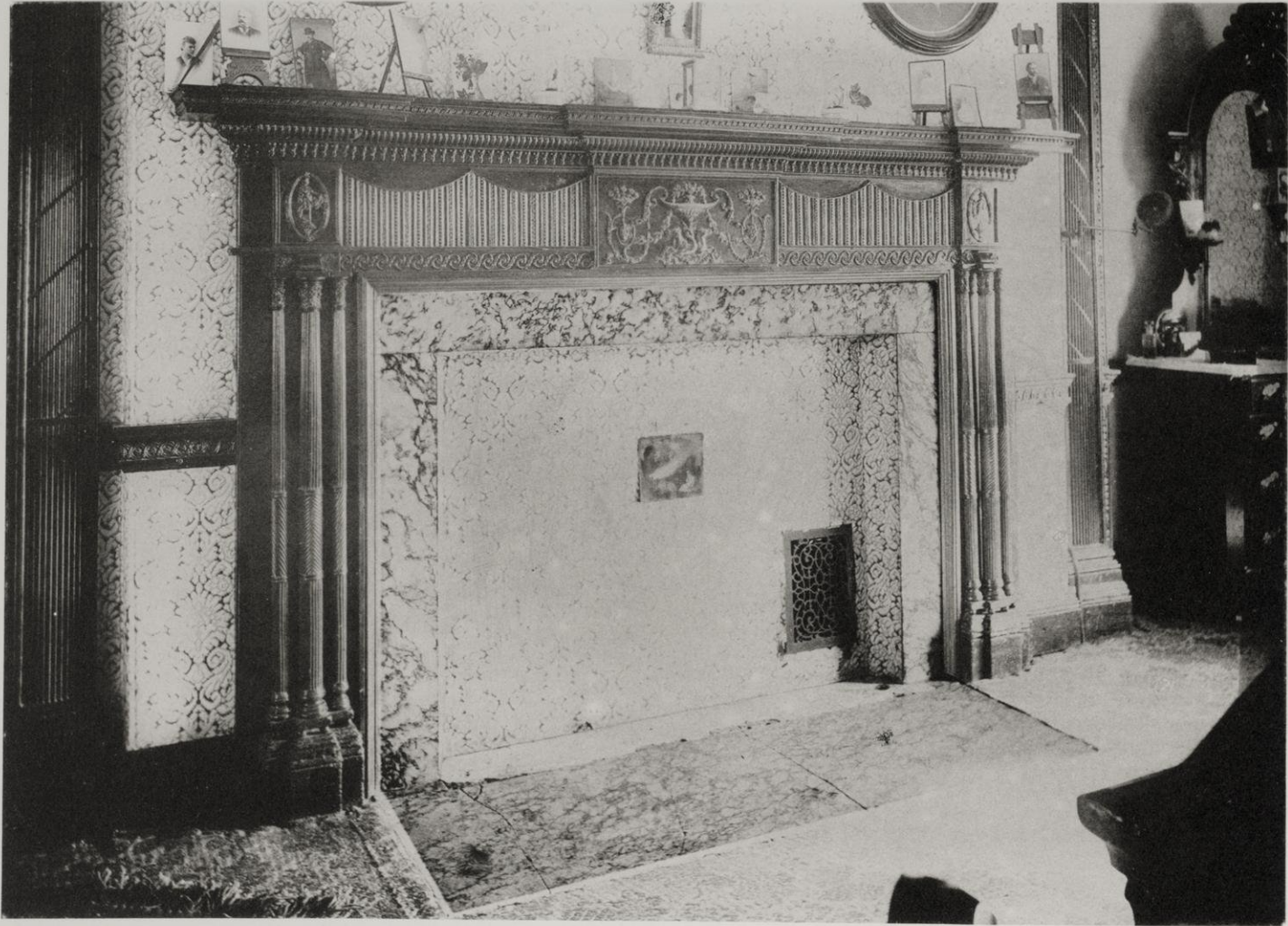


Plate 30.

*Mantel in the Lord Fairfax House, Alexandria, Va.
Hallway of Carter's Grove Hall, James River, Va.*

*The Colonial Architecture of
Maryland, Pennsylvania, and Virginia.*



Plate 31.

Drawing Room Mantel, Brice House, Annapolis, Md.

*The Colonial Architecture of
Maryland, Pennsylvania, and Virginia.*



Plate 32.

Mantel in Dr. Grim's House, Baltimore, Md.

*The Colonial Architecture of
Maryland, Pennsylvania, and Virginia.*



Plate 33.

Mantel in Huntingdon, Baltimore County, Md.

*The Colonial Architecture of
Maryland, Pennsylvania, and Virginia.*



Plate 34.

Garden Front of the Bidout House, Annapolis, Md.

*The Colonial Architecture of
Maryland, Pennsylvania, and Virginia.*



Plate 35.

Doorway of Gazanove, Alexandria, Va.

*The Colonial Architecture of
Maryland, Pennsylvania, and Virginia.*



Plate 36.

Mantel in Casanove, Alexandria, Va.

*The Colonial Architecture of
Maryland, Pennsylvania, and Virginia.*



Plate 37.

Detail of Mantel in Cazanove, Alexandria, Va.

*The Colonial Architecture of
Maryland, Pennsylvania, and Virginia.*



Hallway of Casanove, Alexandria, Va.



Hallway of Westover, James River, Va.

*The Colonial Architecture of
Maryland, Pennsylvania, and Virginia.*



Plate 39.

Gates at Westover, James River, Va.

*The Colonial Architecture of
Maryland, Pennsylvania, and Virginia.*



Plate 40.

Shirley and Westover Mansions, James River, Va.

*The Colonial Architecture of
Maryland, Pennsylvania, and Virginia.*



Doorway of the Harwood House, Annapolis, Md.



Doorway of Westover, James River, Va.

*The Colonial Architecture of
Maryland, Pennsylvania, and Virginia.*



Plate 42.

Lost Finials at Westover, James River, Va.

Statue of Gov. Norborne Berkeley, Williamsburgh, Va.

*The Colonial Architecture of
Maryland, Pennsylvania, and Virginia.*



Doorway on Prince St., Alexandria, Va.



Porch in Fredericksburg, Va.

Plate 43.

*The Colonial Architecture of
Maryland, Pennsylvania, and Virginia.*



Plate 44.

Front and Side Entrances of the Old Maryland Club House, Baltimore, Md.

*The Colonial Architecture of
Maryland, Pennsylvania, and Virginia.*



Plate 45.

Campus Front of the University of Virginia, Charlottesville, Va.

*The Colonial Architecture of
Maryland, Pennsylvania, and Virginia.*



Plate 46.

Street Front of the University of Virginia, Charlottesville, Va.

*The Colonial Architecture of
Maryland, Pennsylvania, and Virginia.*



Plate 47.

House and Dormitories on the Campus, University of Virginia, Charlottesville, Va.

*The Colonial Architecture of
Maryland, Pennsylvania, and Virginia.*



Plate 48.

House and Dormitories on the Campus, University of Virginia, Charlottesville, Va.

*The Colonial Architecture of
Maryland, Pennsylvania, and Virginia.*



Plate 49.

House on the Campus, University of Virginia, Charlottesville, Va.

*The Colonial Architecture of
Maryland, Pennsylvania, and Virginia.*



Plate 50.

House on the Campus, University of Virginia, Charlottesville, Va.

NA
+707
+C5

NA
+707
+C5

plates 1-50 (complete 11/8/72)

DATE	ISSUED TO
DEC 6 '72 9	Habel Gilman

KOHLER ART LIBRARY

89110520541



b89110520541a