



LIBRARIES

UNIVERSITY OF WISCONSIN-MADISON

Orchestra part: timpany. c1884

von Suppé, Franz et al.

[s.l.]: [s.n.], c1884

<https://digital.library.wisc.edu/1711.dl/WRXOEFPRMTQES8H>

Based on date of publication, this material is presumed to be in the public domain.

For information on re-use see:

<http://digital.library.wisc.edu/1711.dl/Copyright>

The libraries provide public access to a wide range of material, including online exhibits, digitized collections, archival finding aids, our catalog, online articles, and a growing range of materials in many media.

When possible, we provide rights information in catalog records, finding aids, and other metadata that accompanies collections or items. However, it is always the user's obligation to evaluate copyright and rights issues in light of their own use.

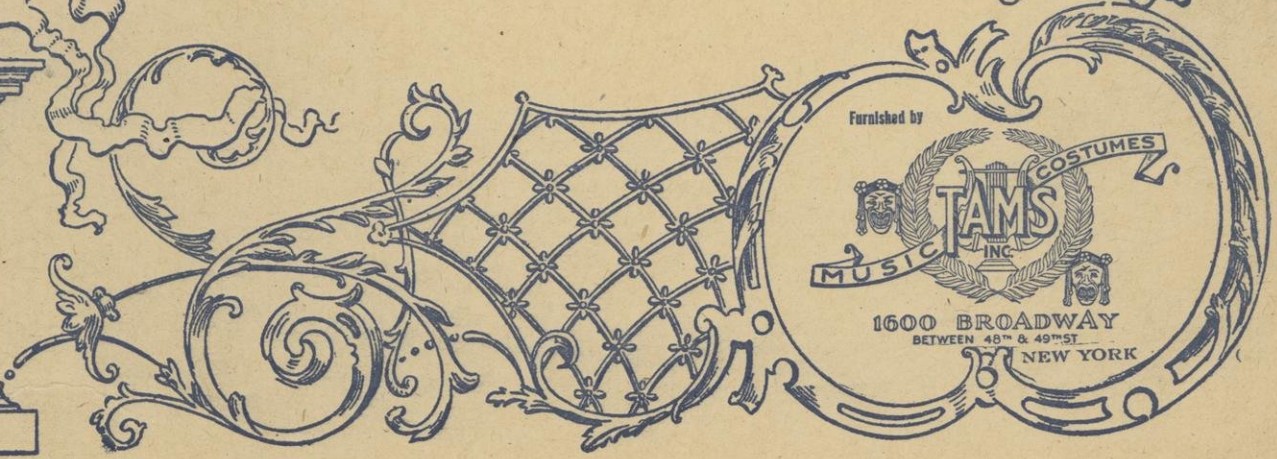


ORCHESTRATION

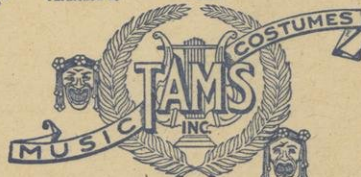
OF

A Trip to Africa

No Copying Of This Work Allowed
Under Any Circumstances.



Furnished by



1600 BROADWAY
BETWEEN 48TH & 49TH ST
NEW YORK

IMPORTANT

DO NOT Mutilate this part.

**Make only Necessary cuts with Black Lead Pencil,
and very lightly.**

**ANY CUTS Made with ink, colored or indelible pencil
mutilates this part.**

**As music of this description now cannot be purchased
All damage will be charged for.**

A. W. TAMS MUSIC LIBRARY, Inc.

Afrikareise. Oper. in 3 Acten von Fr. von Suppe.

Timpani

Preludio in F. C. E.

All.^o brillante. $\frac{5}{8}$ *pp.* *f.*

pp. *cresc.* *f.*

And.^{te} $\frac{3}{4}$ 15. 13. *attacca.*

No. 1 (ca) Introduction E. A.

Allegretto moderato alla breve. 10. *ppf.*

13. *ppf.*

f

f

ppf. *f*

ppf. *f*

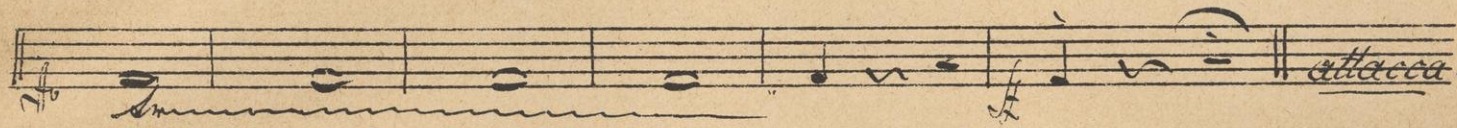
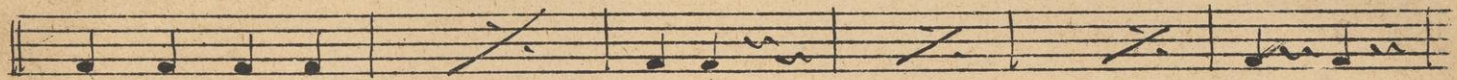
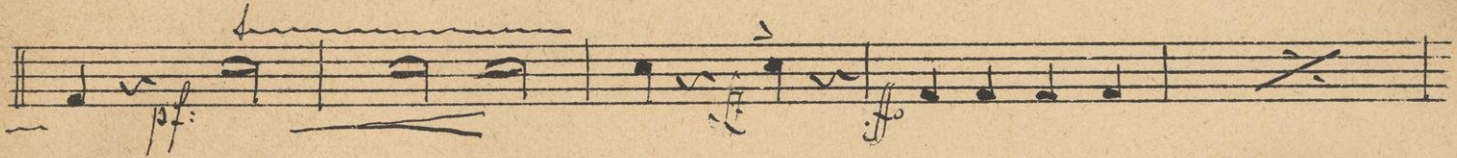
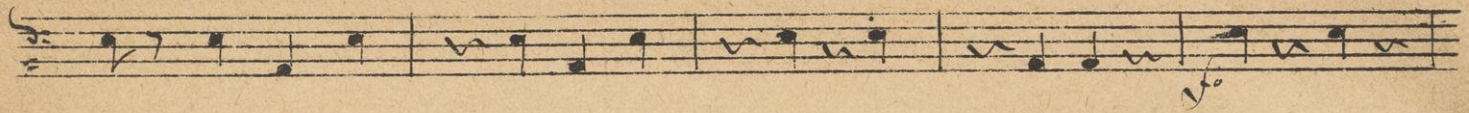
f

3. *f*

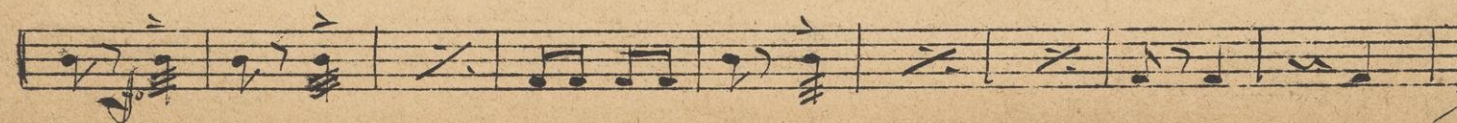
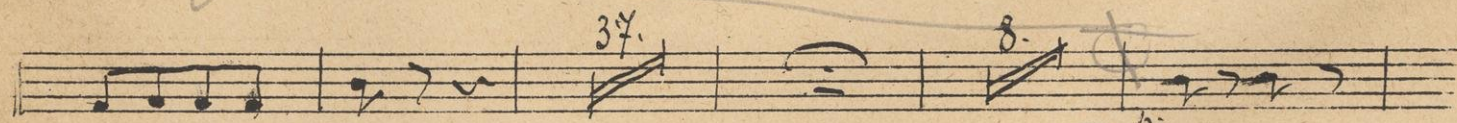
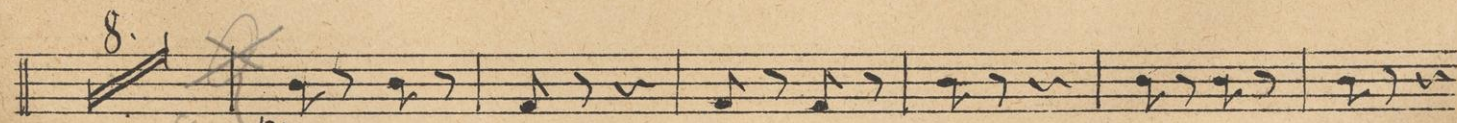
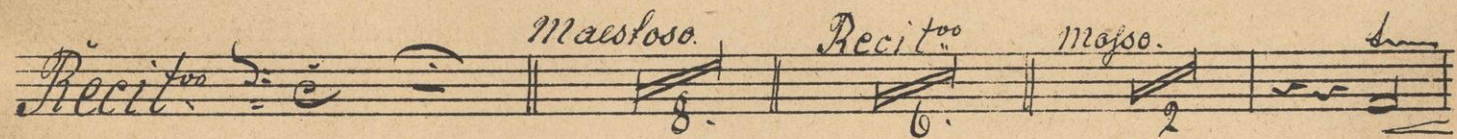
8. *f* 2.

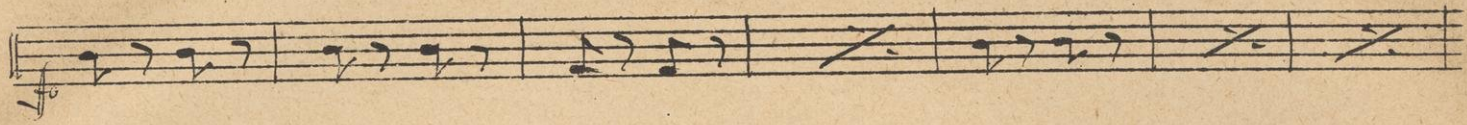
Lento. 15. *All.^o 6.* *ppf.*

Tempo 1^o

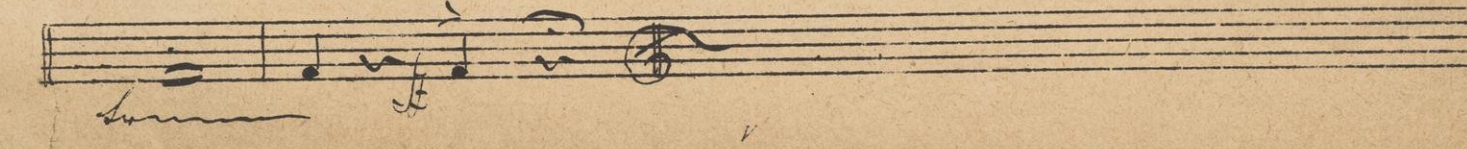
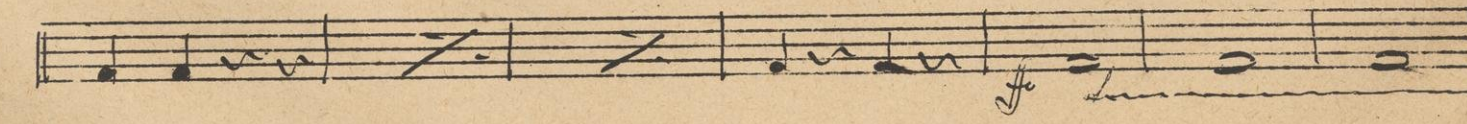
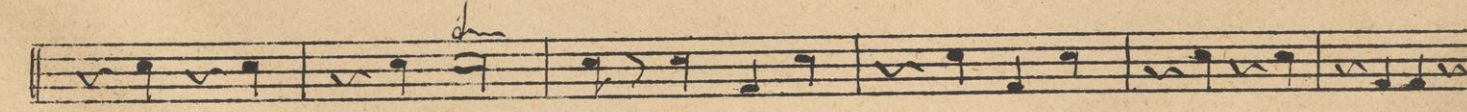
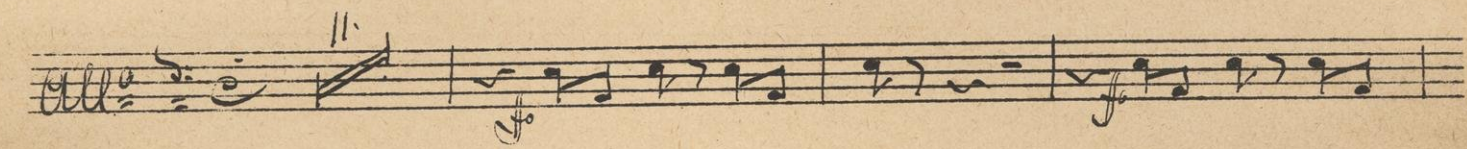
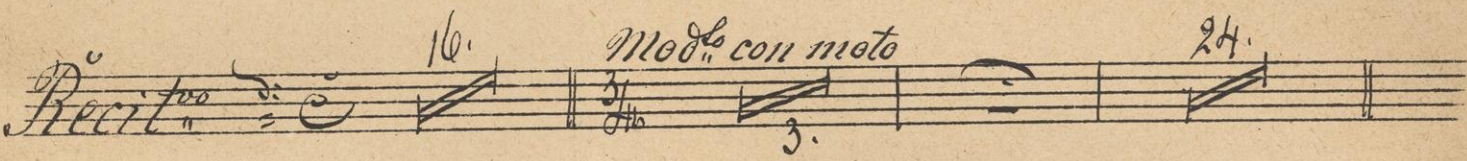


Op. 1 (b.) Touristen Lied. A. D.





No. 1. (a) Caschieren Muzgins E. A.



No. 2. Etude des Princes. F. C.

All.^o brillante $\frac{5}{8}$ f.

mf *cresc.*

f

f

f

f

18. *f*

29. *mf*

2. *f*

f

1^o 2^{do} *f*

No. 3. Entrée de Titania in A. & E.

Maestoso grave. $\frac{5}{8}$ 3.

Claro Solo in tempo rubato. $\frac{3}{4}$ 7. *And^{te} preciso*

Allegretto. 32.

No. 3 1/2. Antarsida Abgang. C. F.

All^o brillante. $\frac{5}{8}$ 8.

Ando " *Quartett* in C. u. G.

Ando " *con moto.*

Recitro 5. *modo* 4.

All: vivo alla breve.

8.

Handwritten musical score for five staves. The first staff begins with a treble clef, a key signature of one sharp (F#), and a dynamic marking of *fp*. Above the first staff, there are markings for fingerings: 1, 2, 3, and 4. The second staff continues with fingerings 1, 2, 3, 4, 1, 2, 3, 4. The third and fourth staves contain musical notation with various dynamics and articulation marks. The fifth staff concludes with a double bar line and a fermata.

Mus. 5. Terzett. C. in F.

Handwritten musical score for two staves. The first staff is marked *Allegretto* and features a 3/4 time signature. It includes dynamic markings such as *fp* and *f*, and contains markings for first, second, and third endings: *1^a ed 2^a* and *3^a*. The second staff continues the piece with a *dim* marking and ends with a double bar line and a fermata.

Mus. 6. Finale in B. in Es.

Handwritten musical score for three staves. The first staff is marked *Allegretto pesante* and features a 2/4 time signature. It includes dynamic markings such as *fp* and *f*, and contains a marking for a first ending: *1^a*. The second staff begins with a marking of *35.* and includes a dynamic marking of *f*. The third staff continues the piece with a *dim* marking and ends with a double bar line and a fermata.

Handwritten musical notation on a five-line staff. It begins with a treble clef and a common time signature. The music consists of quarter and eighth notes. A dynamic marking *dimin-* is written below the first few notes. A measure rest of 4 is indicated above the staff. The piece concludes with a fermata and a final note. A circled number 9 is written at the end of the staff.

Handwritten musical notation on a five-line staff. It begins with a treble clef and a common time signature. A measure rest of 32 is indicated above the staff. The music features a sequence of eighth notes and quarter notes.

Handwritten musical notation on a five-line staff. It begins with a treble clef and a common time signature. The music consists of quarter notes. A dynamic marking *dimin* is written at the end of the staff.

Handwritten musical notation on a five-line staff. It begins with a treble clef and a common time signature. A measure rest of 4 is indicated above the staff. The music consists of quarter notes.

Handwritten musical notation on a five-line staff. It begins with a treble clef and a common time signature. A measure rest of 3 is indicated above the staff. The tempo marking *All^o non molto.* is written above the staff. A circled number 9 is written above the staff. The music consists of quarter notes. A handwritten note *dimin inf fin o forte!* is written below the staff.

Handwritten musical notation on a five-line staff. It begins with a treble clef and a common time signature. The music consists of quarter notes.

Handwritten musical notation on a five-line staff. It begins with a treble clef and a common time signature. The tempo marking *Sostenuto* is written above the staff. The music consists of half notes. A dynamic marking *fp* is written below the staff.

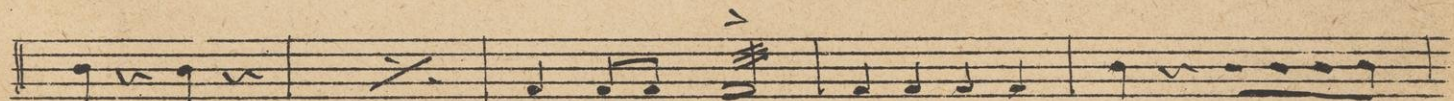
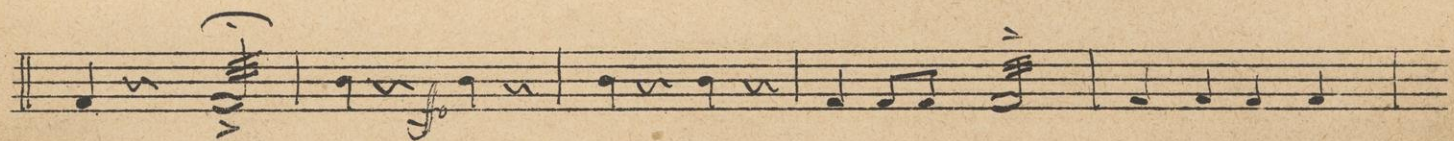
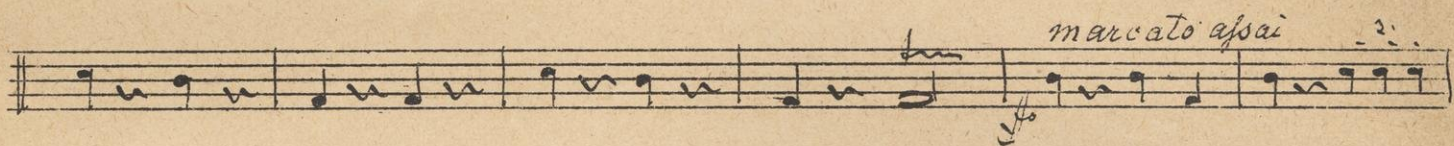
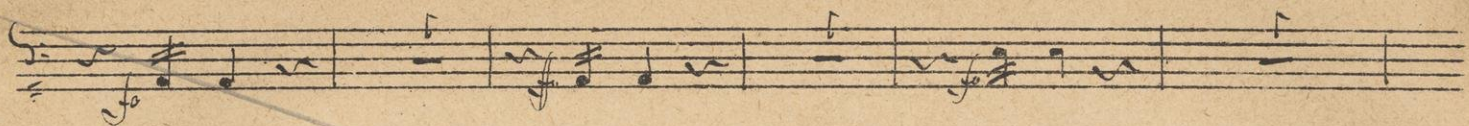
Handwritten musical notation on a five-line staff. It begins with a treble clef and a common time signature. A measure rest of 14 is indicated above the staff. The tempo marking *And^{te}* is written above the staff. A dynamic marking *fp* is written below the staff. A measure rest of 5 is indicated above the staff. The tempo marking *Allegretto* is written above the staff. A circled number 9 is written below the staff.

Handwritten musical notation on a five-line staff. It begins with a treble clef and a common time signature. The music consists of quarter notes.

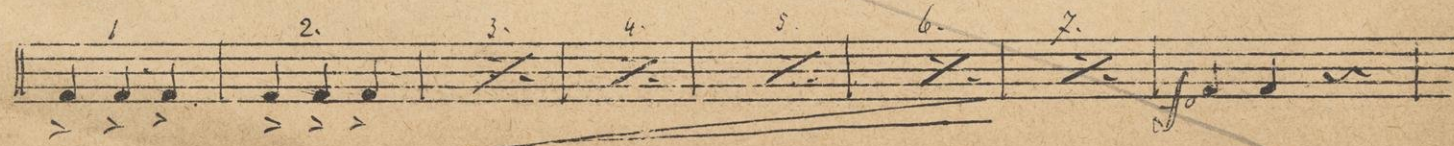
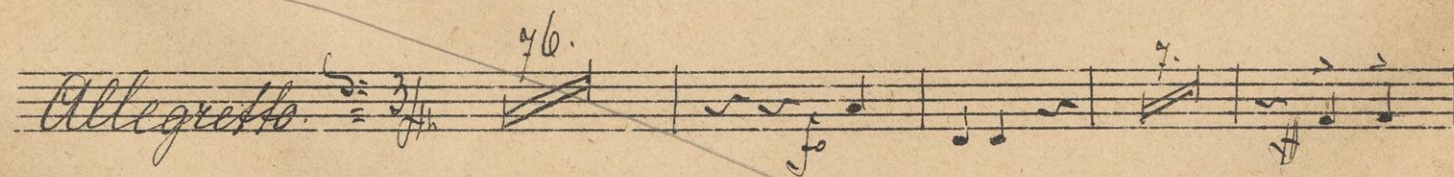
Handwritten musical notation on a five-line staff. It begins with a treble clef and a common time signature. A measure rest of 7 is indicated above the staff. The tempo marking *And^{te} tempo 1^o* is written above the staff. A dynamic marking *fp* is written below the staff. A measure rest of 8 is indicated above the staff. The tempo marking *Piu mosso.* is written above the staff. A measure rest of 8 is indicated above the staff. The tempo marking *Allegretto pesante* is written above the staff. A measure rest of 8 is indicated above the staff.

Handwritten musical notation on a five-line staff. It begins with a treble clef and a common time signature. The music consists of quarter notes.

Handwritten musical notation on a five-line staff. It begins with a treble clef and a common time signature. The tempo marking *Alla breve quasi l'istesso tempo.* is written above the staff. A measure rest of 17 is indicated above the staff.



II^{de} Act. F^{mo} y (a.) Entract. C^o. F.



attacca.

No 7 (6) Chor in Couplet. A. D.

16. 17. 2.

3.

mf. f.

5. pf.

1mo 2do 25.

8. Allegro pesante.

Einlage

f.

28. f.

No 8 Lied Facet.

No 8 1/2 Abgang zur Ruccametta Facet.

No. 9. *Wunder-Duettino* G. u. A.

Andantino 5/2 $\text{F}^{\#}$ 5. 12. 16.

1^{ma} 5 2^{da} 7

No. 10. *Ensemble* in C. u. F.

Andantino con moto quasi Allegretto. 3/8 $\text{F}^{\#}$ 38.

cresc. 31.

No. 11. *Couplet* in E. u. A.

Allegretto 2/4 $\text{F}^{\#}$ 4. 19. *Andantino* 4.

fmo tempo 2/4 $\text{F}^{\#}$

No. 12. *Duett* u. *Ferzett* G. u. C.

Mod. assai 2/4 $\text{F}^{\#}$ 13. 11. 3.

All^o giusto, non troppo.

Musical notation on a staff with notes and rests.

Allegretto grazioso. 118. *f* *dim.*
f. n. des Ophelinses füll!

M^o *do* *afai* quasi Sostenuto. 10. 11.

3. All^o *f* *dim.*
3. fünfmal Mal geffirt!

3. *f* *dim.*

3. *f* *dim.* *cresc. afai*

Musical notation with a large scribble over the first few notes.

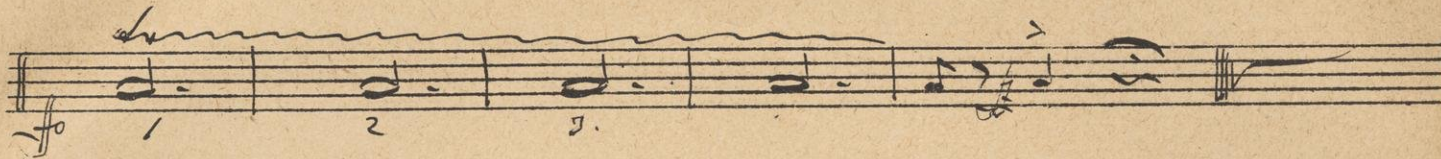
Musical notation with a large scribble over the first few notes.

3. *mf* 1 2

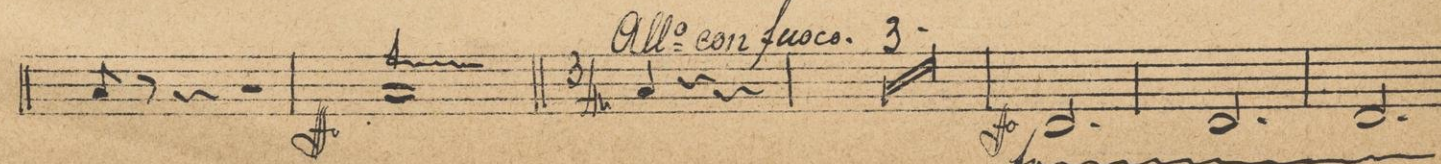
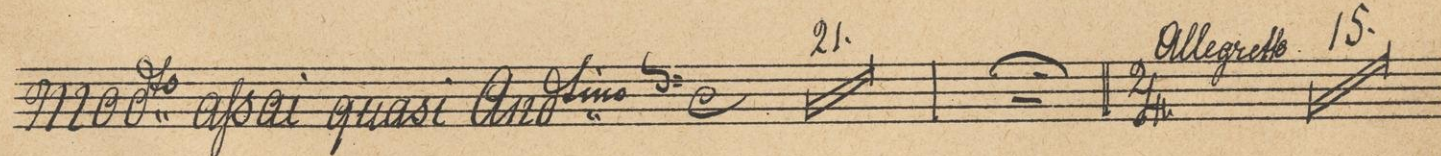
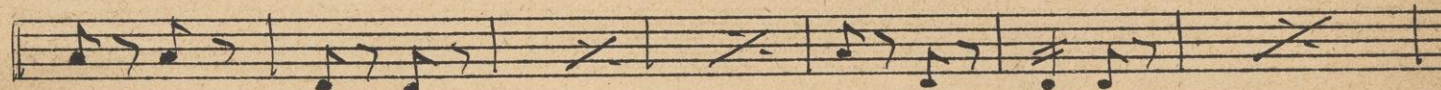
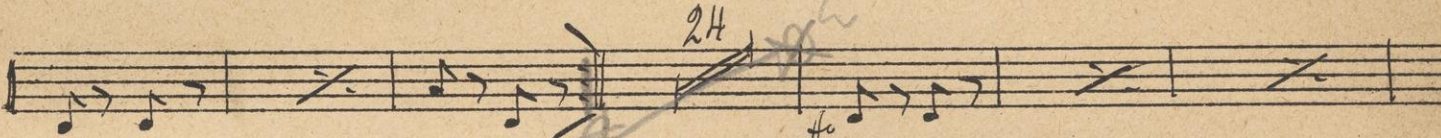
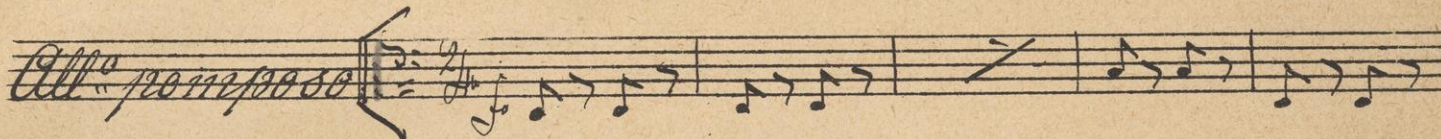
3 4 5 6 7 8 9

Musical notation with notes numbered 1 through 6.

14.



And. 13. Finale 2^{do} f. C.



Handwritten musical notation on a single staff. It begins with a treble clef and a key signature of one sharp (F#). The notation includes several measures with slurs and dynamic markings. A measure marked '3.' has a slur above it. A measure marked '14.' has a slur above it. The piece ends with a double bar line and a fermata.

Handwritten musical notation on a single staff. It begins with a treble clef and a key signature of one sharp (F#). The notation includes several measures with slurs and dynamic markings. A measure marked '29.' has a slur above it. A measure marked '2.' has a slur above it. A measure marked '6.' has a slur above it. Dynamic markings include *p*, *p*, and *mf*.

Handwritten musical notation on a single staff. It begins with a treble clef and a key signature of one sharp (F#). The notation includes several measures with slurs and dynamic markings. A measure marked '26.' has a slur above it. Dynamic markings include *ff* and *ffo*.

Handwritten musical notation on a single staff. It begins with a treble clef and a key signature of one sharp (F#). The notation includes several measures with slurs and dynamic markings. Dynamic markings include *ff*.

Handwritten musical notation on a single staff. It begins with a treble clef and a key signature of one sharp (F#). The notation includes several measures with slurs and dynamic markings.

Handwritten musical notation on a single staff. It begins with a treble clef and a key signature of one sharp (F#). The notation includes several measures with slurs and dynamic markings.

Handwritten musical notation on a single staff. It begins with a treble clef and a key signature of one sharp (F#). The notation includes several measures with slurs and dynamic markings. A measure marked '16' has a slur above it.

Handwritten musical notation on a single staff. It begins with a treble clef and a key signature of one sharp (F#). The notation includes several measures with slurs and dynamic markings. A measure marked '9.' has a slur above it. A measure marked '6.' has a slur above it. Dynamic markings include *p*, *p*, and *mf*.

Handwritten musical notation on a single staff. It begins with a treble clef and a key signature of one sharp (F#). The notation includes several measures with slurs and dynamic markings. A measure marked '3.' has a slur above it. Dynamic markings include *ff*.

Handwritten musical notation on a single staff. It begins with a treble clef and a key signature of one sharp (F#). The notation includes several measures with slurs and dynamic markings. A measure marked '7' has a slur above it. Dynamic markings include *ff*.

Handwritten musical notation on a single staff. It begins with a treble clef and a key signature of one sharp (F#). The notation includes several measures with slurs and dynamic markings. A measure marked '7.' has a slur above it. Dynamic markings include *ff*.

Handwritten musical notation on a single staff. It begins with a treble clef and a key signature of one sharp (F#). The notation includes several measures with slurs and dynamic markings. Dynamic markings include *ff*.

5. hum hum hum hum

Fin de des 2. Actes.

III^{de} Act. No. 14. Entrée, Chor. Romarze. T. A.

ballad

And 15. 5. 4.

p. cresc. ff. pp.

2. 3. 5. 10. And Lino 33.

No. 14 1/2 Sortie Facet.

Timpani

11

No. 15. Ferrett. G. H. E.

All. alla breve. Musical notation on a staff with a treble clef, key signature of one sharp (F#), and a common time signature (C). The notation includes quarter notes, eighth notes, and rests, with a fermata over the final note.

Musical notation on a staff with a treble clef, key signature of one sharp (F#), and a common time signature (C). It includes a fermata and the tempo marking *Allegretto brillante*.

Encore

Musical notation on a staff with a treble clef, key signature of one sharp (F#), and a common time signature (C). It includes a fermata and the tempo marking *Encore*.

Musical notation on a staff with a treble clef, key signature of one sharp (F#), and a common time signature (C). It includes a fermata and the tempo marking *Encore*.

Musical notation on a staff with a treble clef, key signature of one sharp (F#), and a common time signature (C). It includes a fermata and the tempo marking *Encore*.

Musical notation on a staff with a treble clef, key signature of one sharp (F#), and a common time signature (C). It includes a fermata and the tempo marking *Encore*.

Musical notation on a staff with a treble clef, key signature of one sharp (F#), and a common time signature (C). It includes a fermata and the tempo marking *Encore*.

Musical notation on a staff with a treble clef, key signature of one sharp (F#), and a common time signature (C). It includes a fermata and the tempo marking *Encore*.

Musical notation on a staff with a treble clef, key signature of one sharp (F#), and a common time signature (C). It includes a fermata and the tempo marking *Encore*.

No. 16. Beckwith's Entry G. D.

Musical notation on a staff with a treble clef, key signature of one sharp (F#), and a common time signature (C). It includes a fermata and the tempo marking *Mod.*

ppf

ffo

6.

14. 3. 3. 10.

ppf 3.

3. 1^{ma} 2^{do} 15.

Prosa 6. 21.

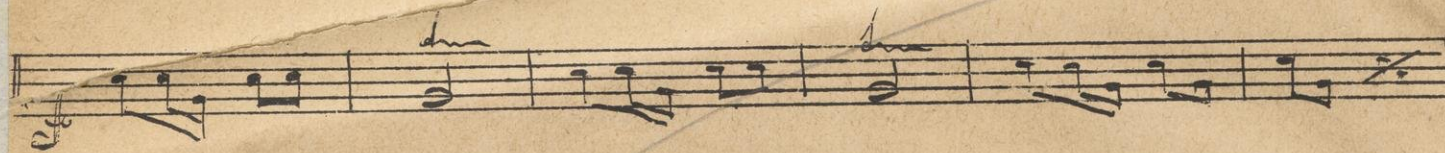
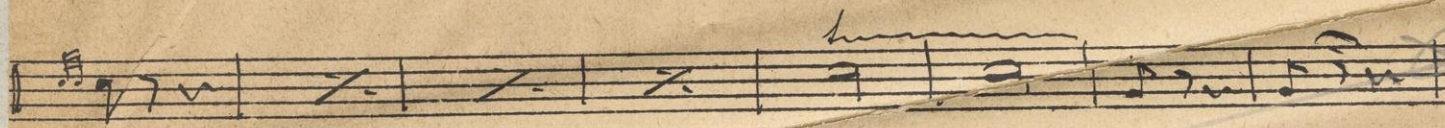
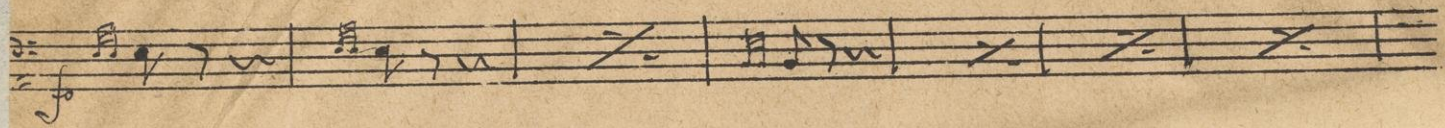
No. 17. Finale

Allegretto maestoso Prosa. 8. Prosa.

Allegretto pesante 2. 10. *ff. i. E.*

ff

18.



fin.

Hamburg,

Aug. Cranz.

Bruxelles,

A. Cranz. Editeur.

Handwritten signature or mark



