



LIBRARIES

UNIVERSITY OF WISCONSIN-MADISON

The Emerald: the Waterford Union High School annual. 1956

Waterford, Wisconsin: [s.n.], 1956

<https://digital.library.wisc.edu/1711.dl/DPEMPOSTSISKE9A>

This material may be protected by copyright law (Title 17, US Code). Original material owned by Waterford Public Library. For information on re-use, contact the Library through the Reference Department, Waterford Public Library, 101 N. River Street, Waterford, Wisconsin 53185, 262-534-3988, (jolliffe@waterford.lib.wi.us).

The libraries provide public access to a wide range of material, including online exhibits, digitized collections, archival finding aids, our catalog, online articles, and a growing range of materials in many media.

When possible, we provide rights information in catalog records, finding aids, and other metadata that accompanies collections or items. However, it is always the user's obligation to evaluate copyright and rights issues in light of their own use.

THE EMERALD

1956









W

**THE 1956
EMERALD**

Presented by
THE ANNUAL STAFF
Waterford High School
Waterford, Wisconsin

Volume 10

May, 1956

TABLE OF CONTENTS

Title	Miss Handran
Table of Contents	Miss Fisher
Dedication	Mr. Davison
Board of Education	Mr. Daugherty
Administration	Miss Crump
Football	Mr. Brys
Football	Mr. Bigley
Football	Mrs. Belich
Homecoming	Janitor
Homecoming	Freshmen
Homecoming	Freshmen
Basketball	Sophomores
Basketball	Sophomores
Basketball	Juniors
Cheerleaders	Juniors
Baseball	Honors
Golf	Sr. Officers
Pep Club	Seniors
G.A.A.	Seniors
Letterman's Club	Seniors
Awards	Seniors
Student Council	Seniors
Emerald Annual	Seniors
Projector Club	Seniors
Library Club	Seniors
Junior Play	Seniors
Senior Play	Seniors
Forensics	Senior Prom
Junior Prom	Drivers' Education
Miss Widerborg	Calendar of Events
Mr. Stasnoplis	Calendar of Events
Miss Ridings	Basketball Action
Mr. Ongaro	Noon Activities
Mr. Mueller	Busses
Mr. Leys	Snapshots
Miss Klemp	Ads.

Co-Editors.....Darlene Borowski
Margo Mattson
Business Manager.....Cordell Barker

DEDICATION



FRANK V. ONGARO

With sincere appreciation of your many fine qualities and accomplishments, the Senior Class proudly dedicates the 1956 Emerald to You Mr. Ongaro

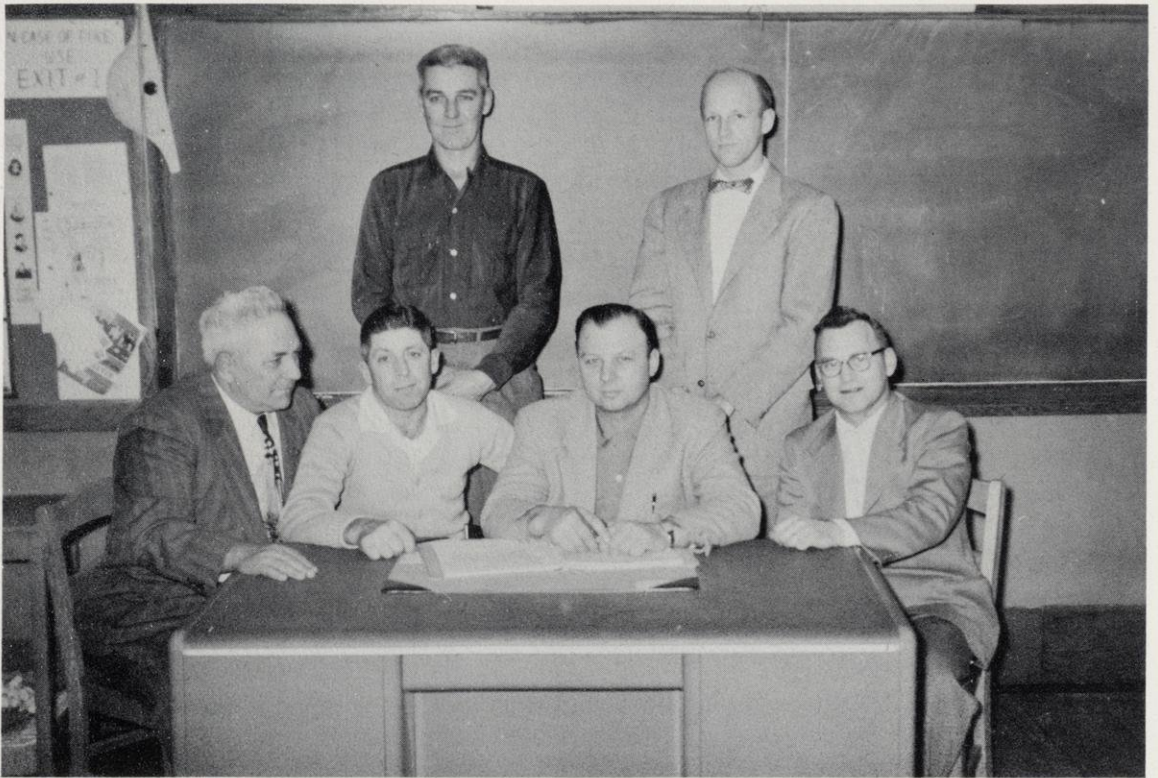
For broadening the horizons of our scientific world through your lectures and demonstrations

For setting us such a fine example of good sportsmanship and giving so freely of your time as golf coach and assistant coach in football and basketball

For sponsoring the Projector Club which serves faculty and students with audio-visual materials

For inspiring us to work toward achieving worthy goals and maintaining high ideals of conduct

BOARD OF EDUCATION



STANDING: Frank Dufenhorst, director; Allan E. Jones, treasurer.
SEATED: Ray S. Kamper, director; Lyman J. Healy, chairman; Everett Horner, clerk;
Clifford Eastman, principal.

We wish to say "Thank you" to the members of our school board for the many hours they have spent in connection with the present and future problems of Waterford High, which includes the coming addition to our school. We appreciate all the school board has done for the betterment of our school.



ADMINISTRATION



As you go along through life, you will find more and more that your schooling has helped prepare you for the varied needs of the future. Society will expect you to apply your abilities and information as a contribution toward making this world a better place to live.

You should have developed a feeling of adequacy, a sense of security, the ability to discipline yourself, and a realization that you are an accepted member of your group. Education should teach you to do the things you have to do when they should be done. We hope that you have been guided toward taking this kind of responsibility.

I wish to offer my sincere and hearty congratulations to this year's graduating class. Some of your accomplishments will remain as high standards for others to follow. We hope that you will continue in your pursuit of a worthy goal in life and that high ideals will influence your conduct as a member of society.

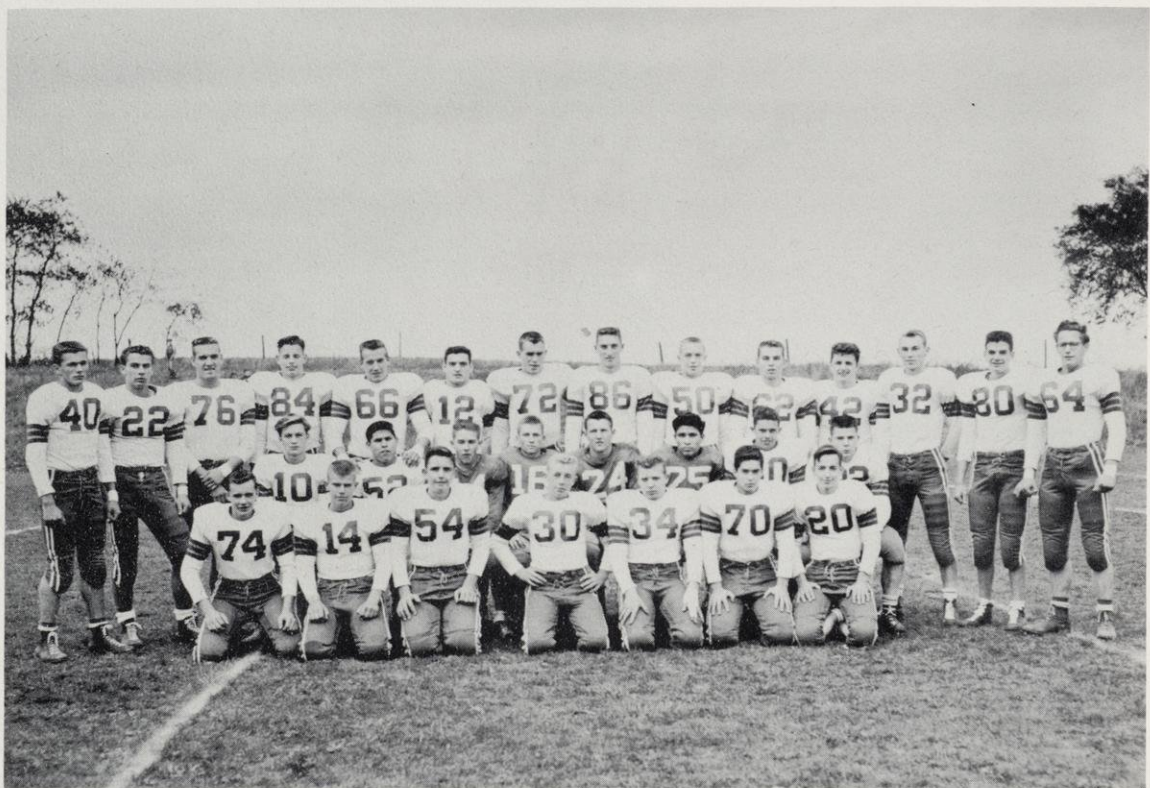
Clifford Eastman.



The office is run most efficiently by our secretary, Mrs. Cyril Barnes.

MRS. CYRIL BARNES

FOOTBALL



TOP ROW: R. Mittelstaedt, DuFrane, Bill Maurer, Curnow, G. Maurer, Gruenwald, F. Witty, Henkel, Soward, Len Hegeman, Olson, Bissonnette, Dufenhorst, Kuzmic.
2nd ROW: D. Meyers, Henry Benavides, Jack Hanson, Robel, Prager, Hector Benavides, Bob Hanson, Dietz.
3rd ROW: Don Banta, J. Greeley, Sholtis, C. Tindall, Glenzer, Edwards, Cahill.

BAD START

The Waterford Wolverines got off to a bad start in what later proved to be an exceptional football season. Bad defense combined with bad breaks (2 TD'S called back) proved too much for the fighting Wolves, as they were beaten by a good St. Mary's team, 12-6.

NORTH vs SOUTH

Waterford ran wild as they beat our age-old rivals, the Rochester Aggies, 18-0. Defense was bolstered by guard Chuck Kuzmic, who reported late to school. The ball was moved almost at will by the very fine running of halfbacks, Bob Olson and Cliff Gruenwald, and fullback, Tom Bissonnette.

ON TOP

Wolverines moved to the top of the heap alone by whipping Slinger, 14-0. Another impressive performance by the forward wall was the major reason for the conquest. Particularly sharp on defense were Chuck Kuzmic and George Maurer. On offense, Olson again ran wild, scoring twice. A fourth quarter safety added two more points.



WATERFORD vs PEWAUKEE

The Wolves finally yielded to a touchdown in beating Pewaukee 19-6. Cliff Gruenwald, a standout, scored twice. Chuck Kuzmic blocked a punt which end Dick Henkel picked up and ran 40 yards for another touchdown. Harry Curnow did a good job filling in for Dale Lueneburg who was out for the rest of the season with a fractured collarbone.

ALL DEFENSE

A brilliant defense game between Waterford and Walworth was played for our Homecoming with our boys winning, 6-0. A pass from Mittelstaedt to Henkel proved to be the deciding factor.

Gruenwald and Henkel turned in a beautiful defensive game. But it took a team effort to stave off Walworth's Warriors as three times they were within our 15 yard line.



DECIDING GAME

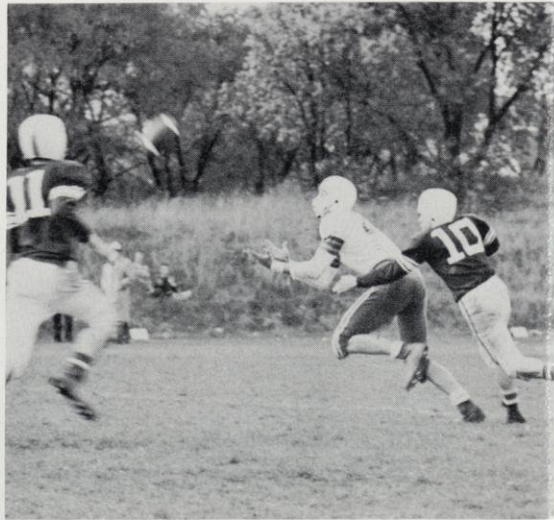
The Wolverines moved into Union Grove to spoil their Homecoming by the score of 19-13. Fullback Tom Bissonnette plunged over for the first touchdown. Gruenwald scored the second from 7 yards out, and Olson ran 60 yards with beautiful blocking to score the last touchdown. Kuzmic kicked the extra point.

NON-CONFERENCE

The victory-hungry Wolves traveled to Madison to whip Central, 25-0. The Wolverines couldn't get moving until the second quarter. After that it was all Waterford. The B squad even did a good job, scoring 6 points.

UNDEFEATED SEASON

Waterford traveled to Hartland on a very frigid night, but it was worth it as the Wolves were again victorious. It was the last game for the Senior boys, and they really did a good job in getting the 12-6 decision. Very fine quarterbacking by Daryl DuFrane and terrific running again by Olson decided the issue. Olson scored from 35 yards out, and another from 70 yards out.



HOMECOMING

KING
Daryl DuFrane



QUEEN
Donna Paulson



**COURT
OF HONOR**



LEFT TO RIGHT

- Carol Behling
- Harry Curnow
- Mary Hoppe
- Fred Witty
- Daryl DuFrane
- Donna Paulson
- Len Hegeman
- Agnes Grevstad
- Cliff Gruenwald
- Betty Hansen



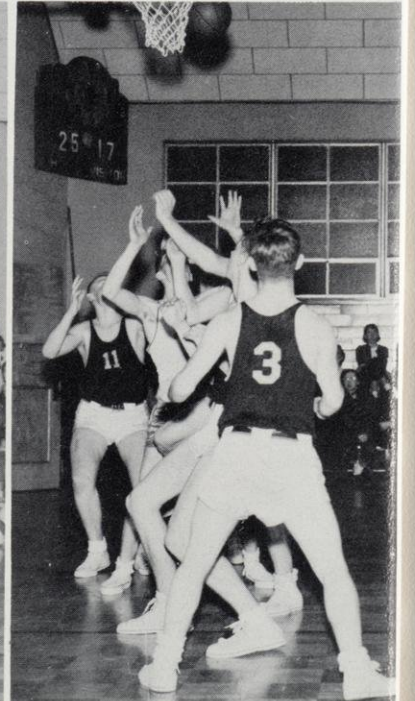
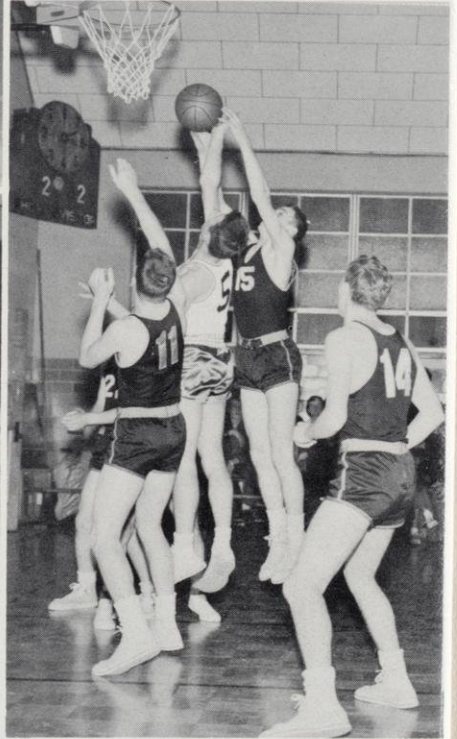
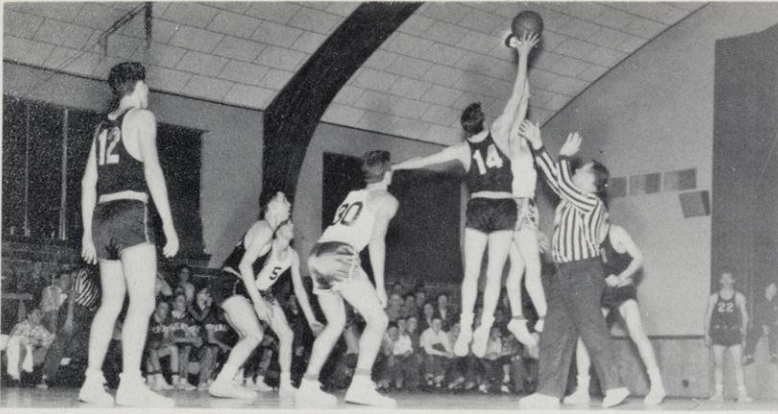


It was about that time again--along in October when Waterford plans for its annual homecoming. Things got under way about two weeks before the great day. There was elaborate preparation for the floats. When the day finally arrived, everyone was at the peak of excitement. Just the night before, the snake dance and bonfire attracted a more than average crowd and everyone was sure we were going to win our game.

Then the day arrived--October 14. Who could possibly keep his mind on school work? Look what was at hand--the prospect of the parade. One of the highlights was the beautiful float which held the lovely queen, Donna Paulson, and her court of honor: Agnes Grevstad, Mary Hoppe, Betty Hansen, and Carol Behling.

At three o'clock the game started with Waterford giving all on-lookers a thrill for their money. We finally won by a score of 6 to 0, defeating Walworth.

More was in store for the happy Waterford fans, for at night a dance was held in the high school gym. The gym itself was decorated in harvest colors and symbols. Lining the gym were football uniforms made up as scarecrows which designated Waterford's football team. King Daryl DuFrane and Queen Donna Paulson reigned over the dance which was presented by the Student Council.



BASKETBALL



BACK ROW: Chervenka, Curnow, Dick Mittelstaedt, Lueneburg.
2nd ROW: E. Staebler---Manager, Soward, M. Nelson, Don Banta, Gary Mittelstaedt
---Manager.
1st ROW: Dietz, Franke, B. Neitman, Baldwin.

What started out to look like a big year just couldn't be. Starting with a 55-43 victory over Slinger seemed to look as if Mr. Stasnopolis's boys were going to have a big year. A loss to Hartland 63-51 gave the boys still more reason to beat Pewaukee. A victory, 54-35, put Waterford in a tie for second place. We lost to Rochester, 48-37.

Next, Waterford played a good game, defeating Norris Foundation 74-48 in Waterford's highest scoring game.

Then something seemed to happen. Waterford lost three straight games, first to Union Grove, 77-57, to Slinger 57-51, and to Hartland, 58-48.

Then, Waterford scored a victory over Pewaukee, 51-47, only to lose the next match to Rochester, 80-63. Our next game was a victory over Norris Foundation, 68-53.

Waterford lost its last game of the season to Union Grove by a score of 73-47.

Over all, Waterford has had some wonderful games, and ended the season with a 5-7 record.

In the Union Grove Tournament, Waterford upset Union Grove by the score of 70-48. This gave Waterford a chance at the championship against Rochester the following night, but we lost to them, 63-47.

JUNIOR VARSITY



TOP ROW: Curzan, Victor, Gruenwald, Cahill, Dufenhorst.
 SECOND ROW: E. Staebler -Manager, Tindall, A. Hegeman, Edwards, Jack Hanson, Ludwig.
 BOTTOM ROW: Briske, Albright, Anderson, Luerrsen, Kruse.

The basketball "B's" were a "rags to riches" team this year. Coach Bigley had hopes of breaking even, but as it turned out the thirty or more hopefuls that tried out for the team molded themselves into a fine unit and came up with a very good 16-4 record. There is always a moral to any success story; Ours—Team work is the basis of success.

Congratulations, boys! Your school and coach are proud of you!

HIGH SCORERS

Jim Cahill	212
Tom Bissonnette	127
Harry Curzan	80
Joe Victor	69
Cliff Gruenwald	42
Gary Kruse	36

LETTER-WINNERS

J. Cahill	B. Edwards
T. Bissonnette	Jack Hanson
H. Curzan	T. Anderson
F. Victor	D. Briski
C. Gruenwald	B. Madden
D. Dufenhorst	K. Ludwig
G. Kruse	A. Hegemann
H. Curnow	C. Routley
C. Tindall	

CHEERLEADERS



A
S
Q
U
A
D

D. Flink, Whalen, N. Paulson, Chic.



B
S
Q
U
A
D

Standiford, Dieterle, R. Flink, Lewis.

BASEBALL



TOP ROW: Mr. Bigley, Don Banta, Leibundgut, D. Soward, Chervenka, Migalski, Dick Mittelstaedt, M. Soward, Jim Hanson.
FRONT ROW: Baldwin, Cahill, Kruse, Franke, B. Hanson, Olson.

The 1955 baseball season proved to be a highly improved one from previous years. The start of a fine season opened with a fine pitching feat as Jim Leibundgut pitched a no-hitter against Slinger to win himself a 2-0 victory. The pitching chores were handled by Jim Leibundgut and Dick Mittelstaedt during the season.

The Wolverines won three games and dropped three games to earn a tie for third place, Waterford claimed its second victory from Pewaukee as it scored a one sided victory of 14-0. Jim Leibundgut went all the way for Waterford.

Hartland was the third victim of a Waterford victory. After three innings of play, Waterford was trailing 3-1, when Jim found himself in trouble, and was relieved by Dick Mittelstaedt, who retired the side. Waterford's fine hitting attack then went to work and produced three runs in the next three innings as Mittelstaedt retired Harland to gain credit for the win.

This was Mr. Bigley's first year as baseball coach. He came up with a team that he shaped and worked hard with, and he had them playing a fine brand of ball. Waterford had one of the finest hitting and fielding teams in years and should prove tough in 1956.

GOLF



Mr. Ongaro, Kruse, W. Staebler, Dean Banta, Cahill, P. Staebler, Don Banta.

Our golf team had a very successful season last year under the direction of Mr. F. Ongaro. The record in our five meets was as follows: three wins, one loss, and one tie.

The first meet was with Union Grove at Waterford's Rivermoor Country Club, and we won 205 strokes to 301 strokes.

The team then traveled to Walworth and suffered our only loss by a score of 290 strokes to 237 strokes at the Big Foot Country Club.

Our next meet was with Wilmot at the Hillmoor Golf Club. We came out on top with a score of 197 strokes to 209 strokes.

Our golfers then returned home to Walworth for the second time and showed improvement by giving them a tie of 252 strokes to 252 strokes. This was the first time in five years that Walworth has ever been tied.

We then ended the season at the Brown's Lake Golf Course with a win over Union Grove. We had 192 strokes to 247 strokes.

G.A.A.



TOP ROW: Joann Rademacher, Whalen, Madden, Mattson.
2nd ROW: Thomas, Buse, Standiford, Metcalf, Joyce Rademacher.

Any high school girl may participate in G.A.A. There are set rules, and points are earned for emblems, letters, and pins. They are awarded at the end of the school year to active girl athletes.

TOP ROW: Malczewski, Whelan, Gulczynski, Rohda, R. Flink, Dieterle, Lewis.
SECOND ROW: Dixon, Gronczewski, Satterstrom, Sas, Christiansen, Magnuson, Mitsch.
THIRD ROW: Davis, Alaxson, Smetana, J. Hegemann, Bott, Beaumont, Mayer, P. Stan-
OSZ.
BOTTOM ROW: Meyers, Reesman, Ringe, Metcalf, Thomas, Joyce Rademacher, Stand-
ford, Buse.



PEP CLUB

A newly-formed organization this year is the Pep Club. They have been active in backing up our teams. Their presence at the games has boosted the morale of both the players and spectators.



Joann Rademacher, Bubenik, Diane Mittelsteadt.

TOP ROW: Kasprzak, Heck, N. Paulson, Wells, B. Schmidt, Wagner, J. Madden, Cottingham, Miller, Frenz.

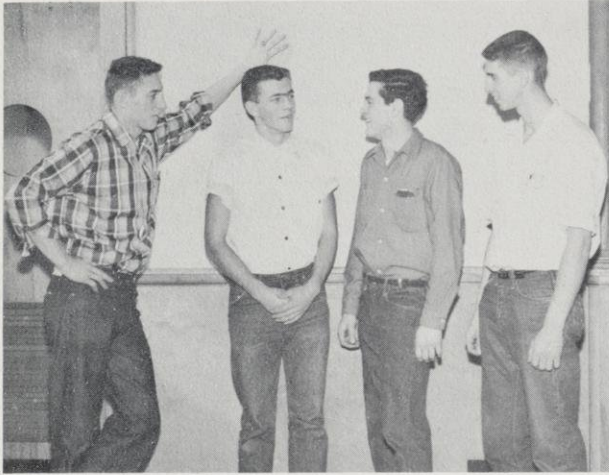
2nd ROW: Johnson, Simon, Kuntz, Whalen, Bubenik, Joann Rademacher.

3rd ROW: Joan Grajek, F. Schmidt, I. Ragio, D. Flink, Holtz, G. Guenther.

4th ROW: A. Saltzman, D. Borowski, Martha Brunlinger, D. Rademacher, Mattson, Kauppi, Hoover.



LETTERMEN'S CLUB



Henkel, Dick Mittelstaedt, Gruenwald, Chervenka.

The W club was organized to promote wholesome athletic competition, good sportsmanship, scholastic efficiency, community responsibility, and to encourage students to take some part in athletics.

Members are all boys who have earned a major athletic award.



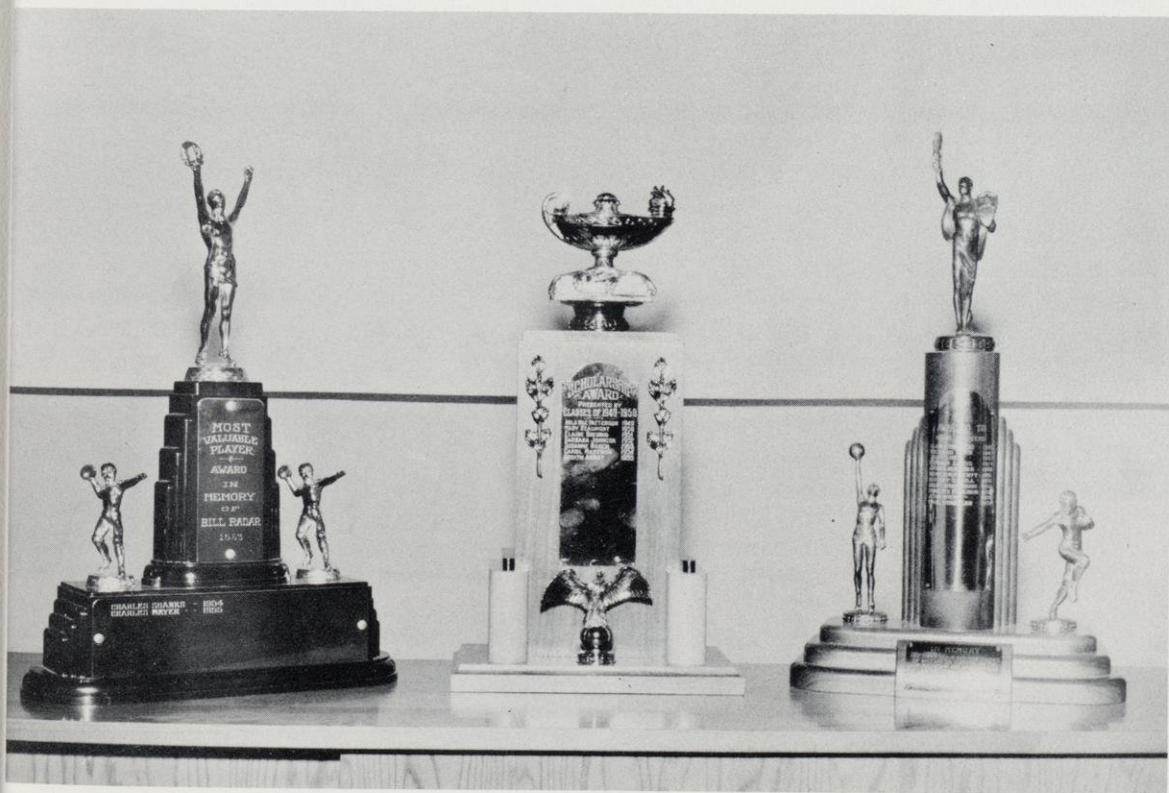
TOP ROW: Kruse, C. Tindall, Carew, Jim Hanson, Hotz.
2nd. ROW: Bob Hanson, Franke, E. Staebler, Don Banta, Cahill, Edwards, Dufenhorst.
3rd. ROW: Lueneburg, Henkel, Baldwin, Bissonnette, Gary Mittelstaedt, Curnow.
4th ROW: Chervenka, Olson, B. Neitman, DuFrane, Soward, F. Witty, Robel.

AWARDS

At commencement time in the spring of 1955, Paul Staebler was honored by having his name added to the winners of the Rockrohr-Skarie Award. All have been athletes who have shown outstanding character and scholarship.

Charles Meyer was the second recipient of the Rader Award. He was selected as the outstanding football player of the year.

As the class of 1956 left Waterford High, Margo Mattson's name remained engraved upon the Scholarship Trophy as the valedictorian of the class.

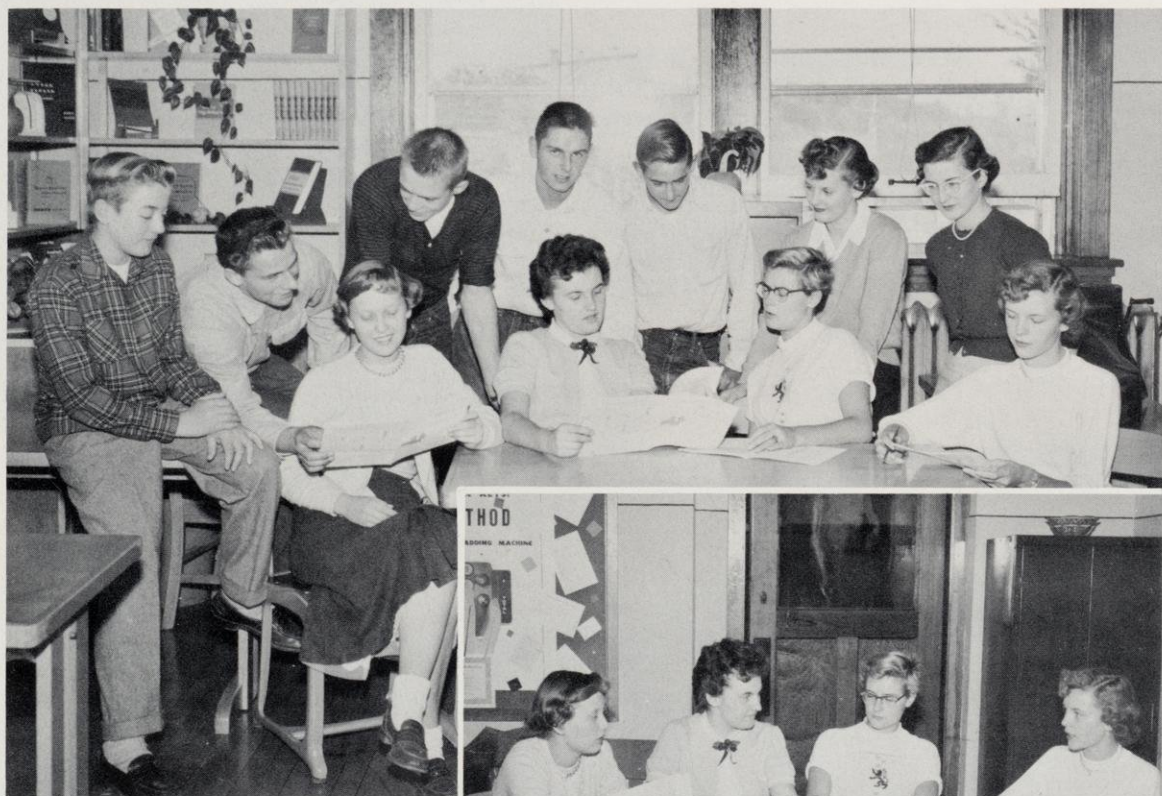


RADER

SCHOLASTIC

ROCKROHR-SKARIE

STUDENT COUNCIL



BACK ROW: Kempken, DuFrane, Soward, Donath, Janke, Halverson, Fisher.
FIRST ROW: Hoppe, N. Paulson, Joann Rademacher, Chic.



Hoppe, N. Paulson, Joann Rademacher, Chic.

The Student Council is advised by Principal C. Eastman. It consists of four seniors, three juniors, two sophomores, and two freshmen. All are elected by the class.

The Student Council has charge of Homecoming each year and does a wonderful job of making it a success. Planning for assemblies, open house, and charity drives keeps the members of the Student Council busy.

THE EMERALD ANNUAL



TOP ROW: Scherbarth, Lois Hegeman, Wagner, Hendricks, N. Paulson, Schmidt, D. Rademacher.

BOTTOM ROW: Holtz, D. Borowski, Barker, Jim Hanson, Mattson, Jo. Rademacher.

The task of preparing the yearbook at Waterford High was handled this year by a staff made up of seniors who sold at least one advertisement to aid in financing the book.

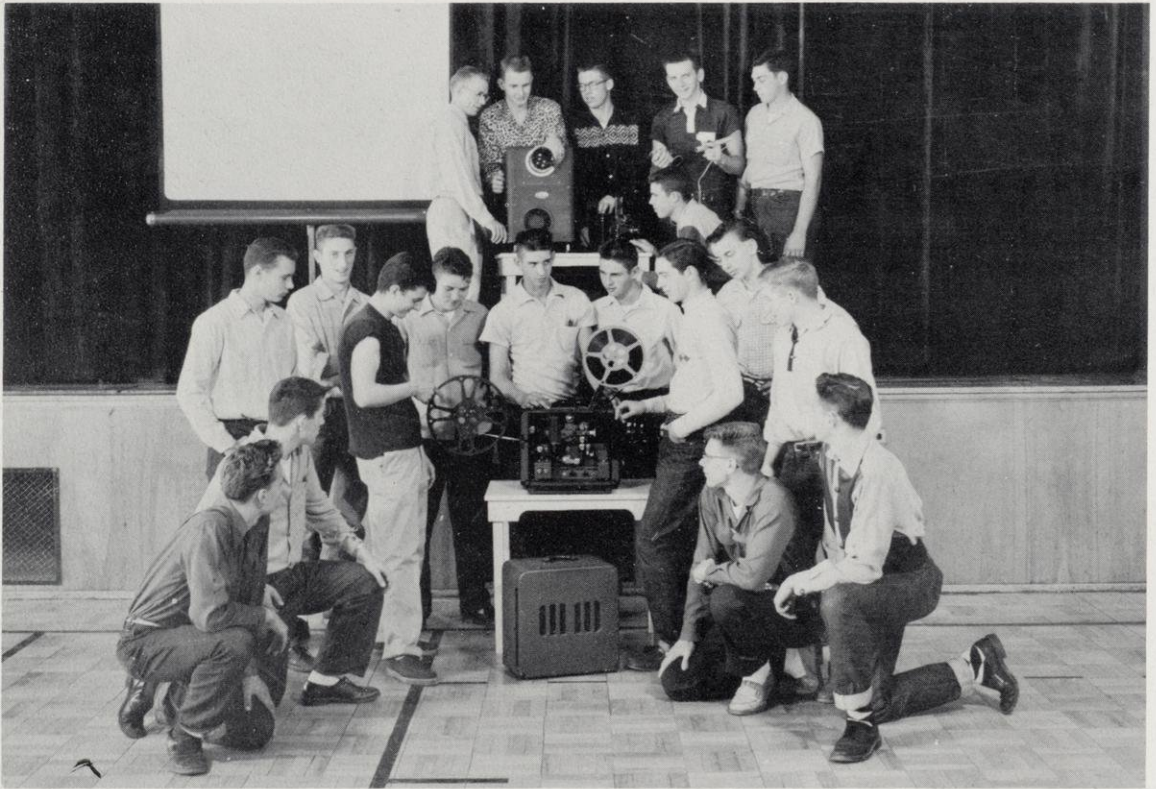
The co-editors, Darlene Borowski and Margo Mattson, and the business manager, Cordell Barker, were chosen by the staff from a group of nominees selected by the advisers, Miss Handran and Miss Klemp.

The staff has attempted to tell you in pictures and words the story of Waterford High for the school year 1955-1956.

John Marshall, photographer, Barker, D. Borowski, Mattson.



PROJECTOR CLUB



TOP ROW: Franke, Barker, Jim Hanson, Carew, Becker.
2nd ROW: Don Banta, Henkel, Olson, Jensen, Chervenka, Donath, M. Nelson, Bakke, Fieblekorn.
3rd ROW: Dean Banta Prager, Wiesenthal, Curnow.



The Projector Club was in charge of showing the student body feature-length movies sponsored by the Student Council. Also the feature-length picture "Macbeth" was shown for senior speech and English classes. The members run many films for various classes, and are under the direction of Mr. Frank Ongaro.

LIBRARY CLUB



FIRST ROW: Murray, Gail Mittelstaedt, Schattner, Sas, M. Routley, Hoover, Heck, G. Guenther, Fide, Brown, Robel.

FRONT ROW: Martha Brunlinger, Standiford, N. Waldron, Metcalf, R. Schroeder, Ray, S. Neitman, Scherbarth.

Schattner, M. Routley, R. Schroeder.

Membership in the club totals twenty-one; the following are seniors: Martha Brunlinger, Milly Routley, Judy Scherbarth, and Ruth Schroeder.

The operation of the circulation desk is handled smoothly and efficiently by the members. Some of the members took charge of the mail and most of them worked on the bulletin boards.

Something new this year is a library manual to help members become better informed in operating a library efficiently. The completion of the manual with a series of tests and the recommendation of the librarian enables a member to secure credit for the work.

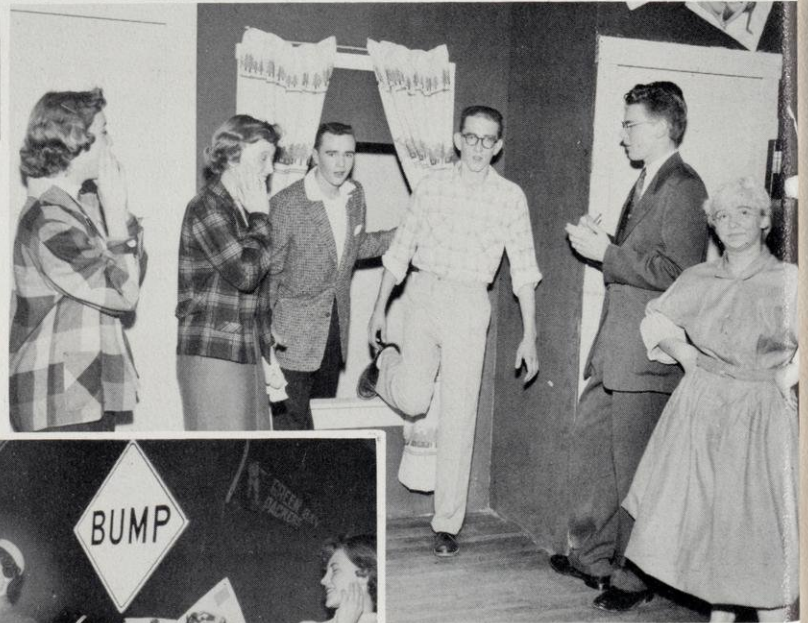
The Library Club went on a field trip to the Milwaukee Public Library and the Museum and to the Book Fair at West Allis. There the members helped in the selection of new books.

JUNIOR PLAY



A college dormitory set the scene for the Junior Class play, *Best Foot Forward*, which was presented November 18 and 19. The cast included, from left to right, Harry Curnow, Sharon Whalen, Dick Henkel, Marian Murray, Jerry Fieblekorn, and Tom Bissonette.

Maraloy Miller, Mary Hoppe, Don Banta, Don Wheeler, Bob Wiesenthal, and Donna Kauppi.



Milt Soward, Dean Banta, Susie Boehles, Gary Mittelstaedt, and Sandy Chic.

SENIOR PLAY



Instead of the usual long play, the seniors gave three one-act plays this year as a new venture in dramatics. It gave more seniors a chance to take part.



“THIS WAY TO HEAVEN”

Mr. Flannigan.....	Ronald Baldwin
Gram Wilson.....	Agnes Grevstad
June Wilson.....	Jean Madden
Charley Baker.....	Dick Mittelstaedt

“HIGH WINDOW”

Emily Winthrop.....	Milly Routley
Stephen Craig.....	Marvin Nelson
Judith Ware.....	Carol Hayne
Walter Hodge.....	Cordell Barker
Linda Norton.....	Donna Flink

“JAZZ AND MINUET”

Eleanor Prudence Von Hayden....	Darlene Borowski
Mrs. Von Hayden.....	Nancy Waldron
Prudence Von Hayden.....	Rita Wagner
Richard Townsend.....	Garth Hotz
Robert Trowbridge.....	Dennis Donath
Nettie.....	Dianne Rademacher
Lucy.....	Anita Ragio
Milord Devereaux.....	Roger Bauman



STUDENT DIRECTORS

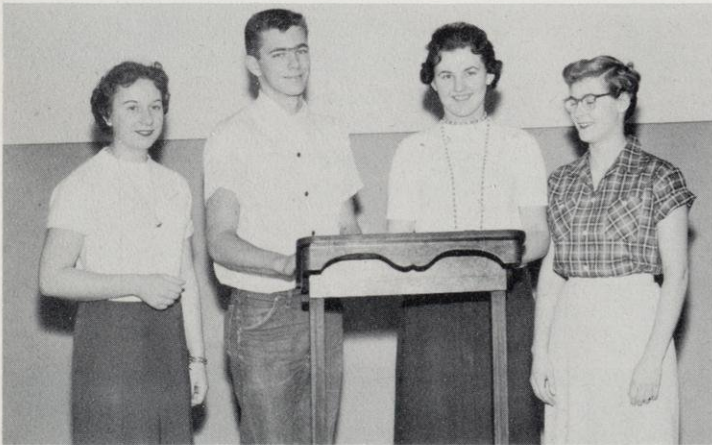
“HIGH WINDOW”.....	Naomi Paulson
“THIS WAY TO HEAVEN”....	Joann Rademacher
“JAZZ AND MINUET”.....	Grace Hendricks



FORENSICS



BACK ROW: Mutsch, Donath, Bauman.
SECOND ROW: Dieterle, Ray, S. Neitman, Holick, J. Hegeman, Hoover, Metcalf, Chic, Boehles.
BOTTOM ROW: Hoppe, Grevstad, M. Routley, Hayne, Murray, Gulczynski, Lewis.



N. Waldron, Dick Mittelstaedt, N. Paulson, Jo Rademacher.



Forensics is one of the many speech activities available for student participation. There is a big choice, as there are nine different categories from which to choose. These categories include:

Original oratory--Non-original oratory
Humorous declamation--Serious declamation
Four-minute speech
Extemporaneous speaking--Extemporaneous reading
Interpretative reading--Interpretative poetry

If you are lucky enough to pass the elimination which is held in your school, you are entered in the local contests. For those who receive an 'A' in the local contest, the League Contest is next.

This year Waterford High School was chosen to hold the League Contest. It was held March 2.

The District Contest follows the League Contest. From there you are represented at the State Contest where you may get a medal if you are very good.

JUNIOR PROM

KING: Leonard Hegeman

QUEEN: Joann Rademacher



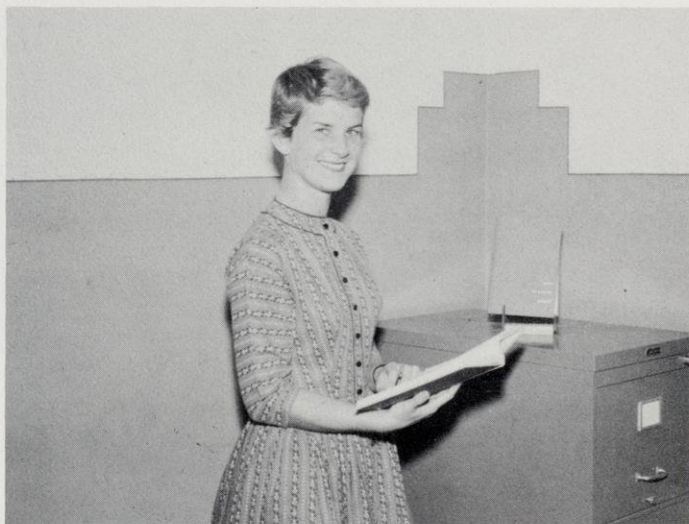
THEME: "Under the Southern Moon"

BAND: Tophatters

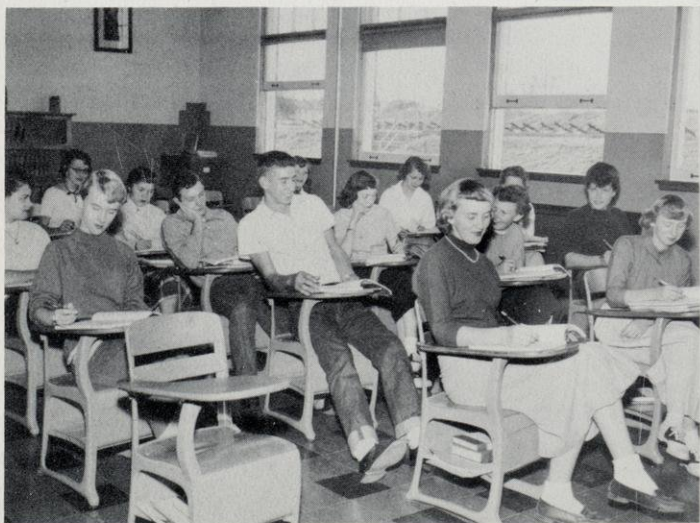
Barbara Hegeman and Jeffrey Halbach led the grand march after which they handed out the programs.



SPEECH AND ENGLISH



WILLA M. WIDERBORG



Miss Widerborg teaches junior and senior speech and English. She coaches forensics and has done much to make the junior and senior class plays successful. Miss Widerborg also gives her time to aid us in putting on our Christmas program.

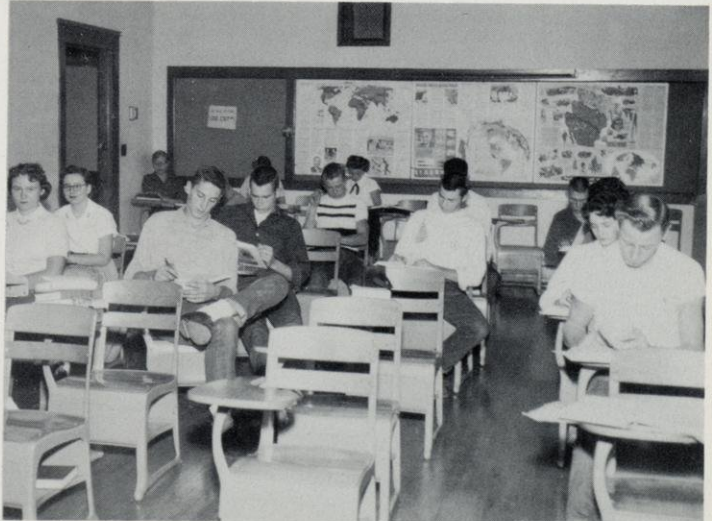
SOCIAL SCIENCE



ALEX STASNOPOLIS



Mr. Stasnopolis instructs classes in U. S. history, social problems, and economics to the juniors and seniors. As the senior adviser, he helped the seniors plan their various activities including their Christmas dance, "Silver Bells." Mr. Stasnopolis is head coach of our football and basketball teams.



CHORUS



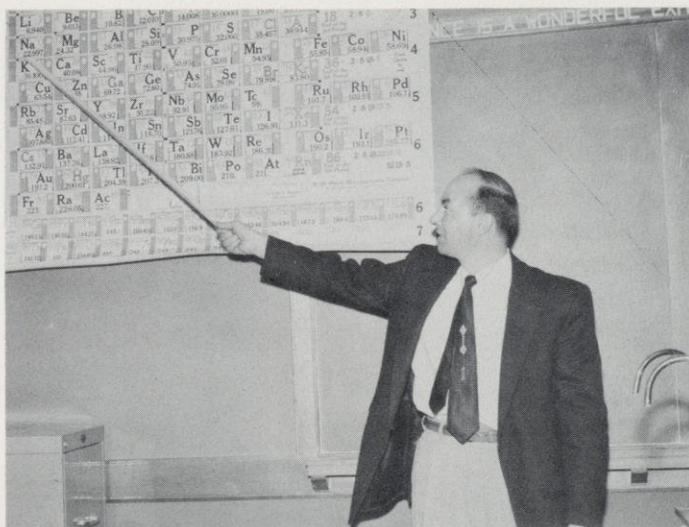
TOP ROW: Gulczynski, Hafner, Grevstad, J. Hegemann, N. Paulson, N. Waldron, Holtz, Metcalf, B. Hansen.
SECOND ROW: Tuinstra, Madden, Rozelle, Horner, Schroeder, Holick, Gronczewski, E. Schuster.
THIRD ROW: Smetana, Jo Rademacher, Natalie, Hoover, Halverson, Marge Brunlinger, J. Cole, M. West, Ray.
BOTTOM ROW: Bredeman, D. Browski, Mattson, Alaxson, Brown, Martha Brunlinger, Aguilar, D. Rademacher.



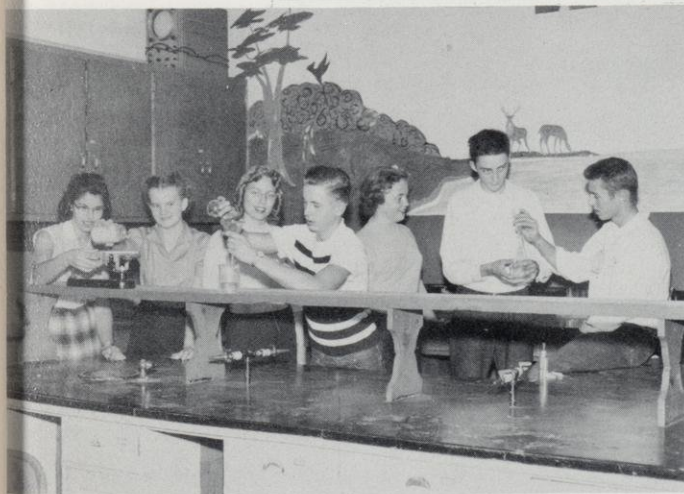
This has been Miss Ridings' first year as vocal director at Waterford. She directs the girls' chorus and puts on several concerts with the help of the band. Some of her girls entered contests for solos or ensembles at Whitewater and participated in the Massed Chorus concert at Burlington.

JOAN E. RIDINGS

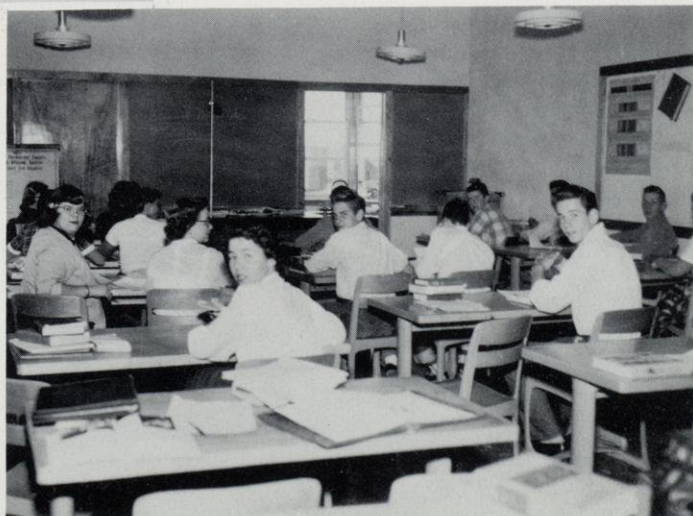
SCIENCE



FRANK V. ONGARO



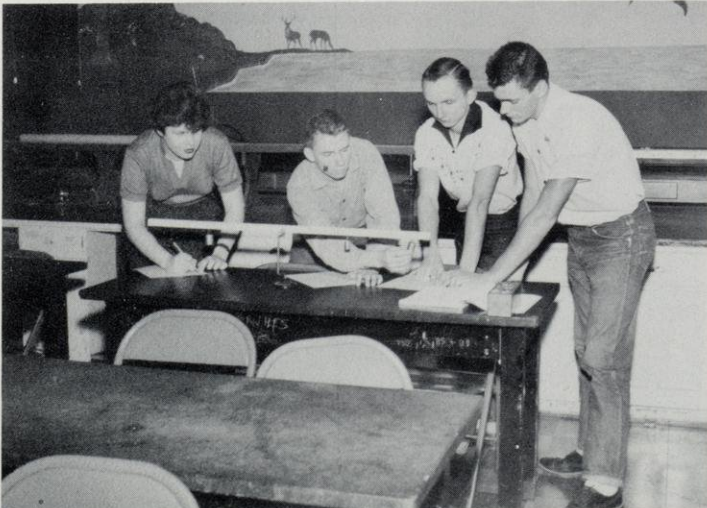
Mr. Ongaro teaches general science, biology, and chemistry. He makes his classes interesting by taking his students on field trips. One was to Charles Noll's outstanding collection of minerals and rocks. He is also sponsor for the Projector Club and head coach of golf. He has helped with all other sports.



PHYSICS AND SHOP



ROBERT F. MUELLER



During his first year at Waterford, Mr. Mueller has been in charge of two shop classes and a physics class. Many enjoyable experiments have made his physics class interesting.

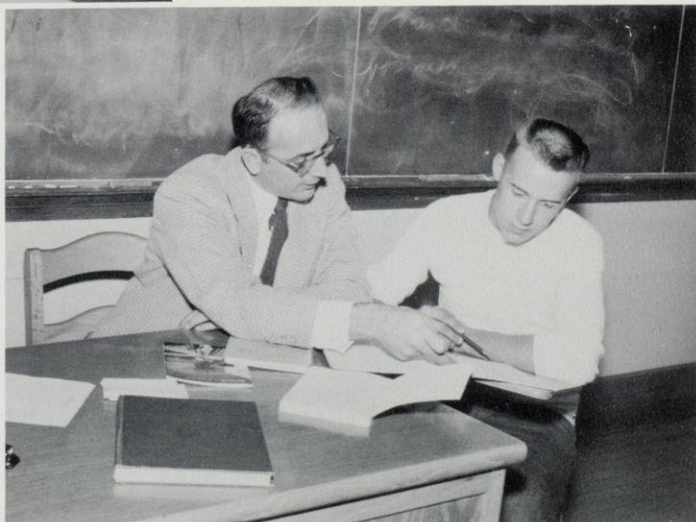
CIVICS AND GUIDANCE



WILBERT LEYS



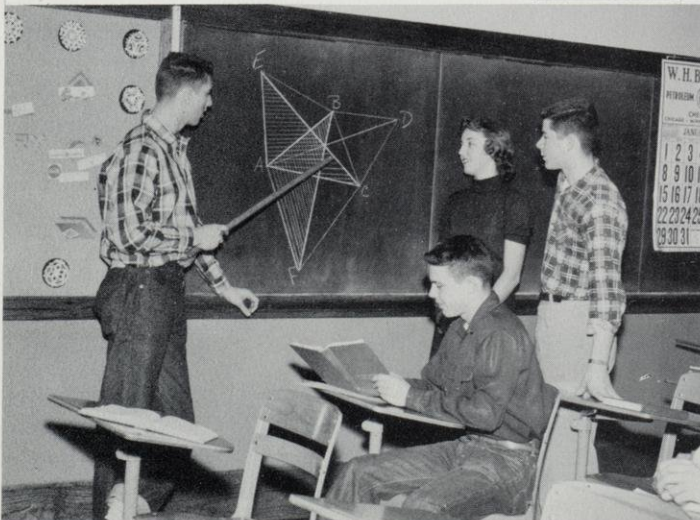
Mr. Leys is our freshman civics teacher. He is a great help to many students who are looking for guidance in their high school courses and future college careers. Mr. Leys has been our guidance director for three years.



MATHEMATICS



ESTHER M. KLEMP



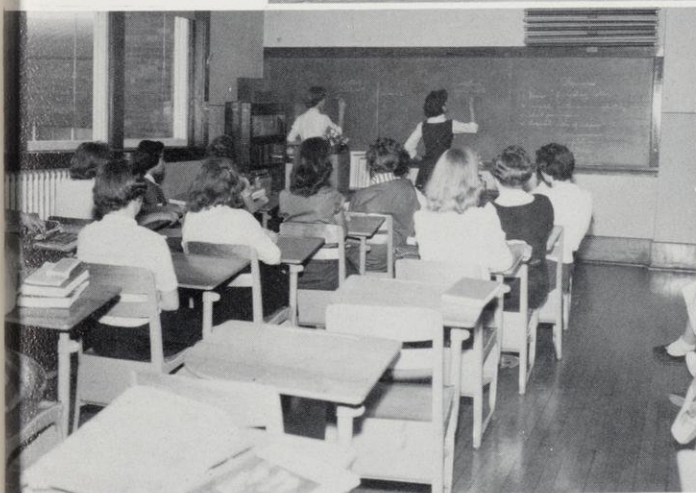
Any student interested in mathematics will find Miss Klemp eager to teach. Her classes include general math, geometry, algebra, and advanced algebra. Miss Klemp spends a great deal of time helping the seniors publish their year book, the Emerald.

to t
Har
libr
She
and

ENGLISH AND LIBRARY



ETHELYN A. HANDRAN



Miss Handran teaches English to the freshman class. Much of Miss Handran's time is spent keeping our library filled with interesting books. She is the adviser of the Library Club and adviser of the Emerald.



HOME ECONOMICS



CATHERINE FISHER



We are glad to have Miss Fisher back once again to continue teaching her classes in home economics. Her girls are taught sewing, cooking, home management, interior decorating, and many other interesting activities.

Miss Fisher is a class adviser for the juniors and gives her assistance in putting on the Junior Prom.

BAND



BACK ROW: Leischer, Vorpahl, R. Hanson, Mitsch, Mantel, Lawrence, Jim Hanson, Lester Frenz, Mr. Davison.

2nd ROW: Joyce Rademacher, Brinkman, S. Schmidt, R. Tindall, Buse, Thomas.

3rd ROW: Hruz, G. Guenther, Callen, Wagner, Barker, Jack Hanson, D. Tindall, J. Alaxson, T. Anderson, Joann Rademacher, Wiesenthal.

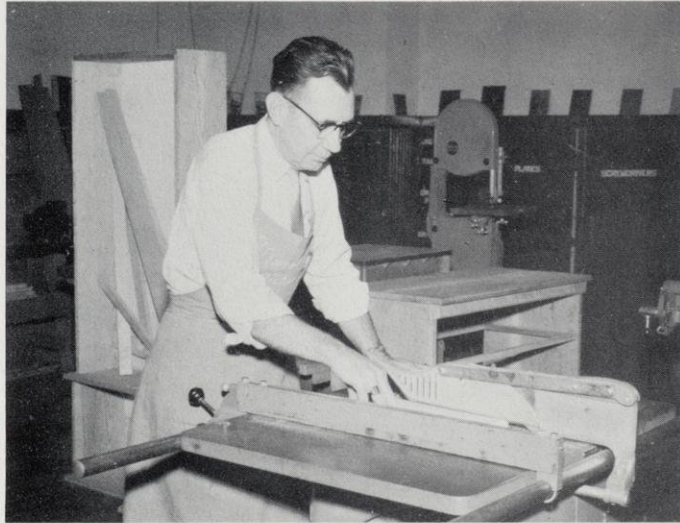
FRONT ROW: Beaumont, Sheard, K. Johnson, G. Hendricks, Lorraine Frenz, Davis.

W. A. DAVISON



Under the very capable direction of our new band director, Mr. Davison, the band has had a very successful year. Our library has grown to the point where it now includes many new semi-classical, novelty, and pop songs, many of which have been introduced at the Winter and Spring concerts, and at various football and basketball games.

INDUSTRIAL ARTS



C. A. DAUGHERTY



Mr. Daugherty taught mechanical drawing and manual arts classes. As Student Council adviser, he helped the Student Council make Homecoming a special event. He also advised the senior class and was in charge of attendance.

ENGLISH AND LATIN



CATHERINE M. CRUMP



Miss Crump has done a fine job this year teaching Latin, as well as senior and sophomore English. After one year's absence from our curriculum, Latin is again being offered to the students.



COMMERCIAL



JAMES H. BRYs



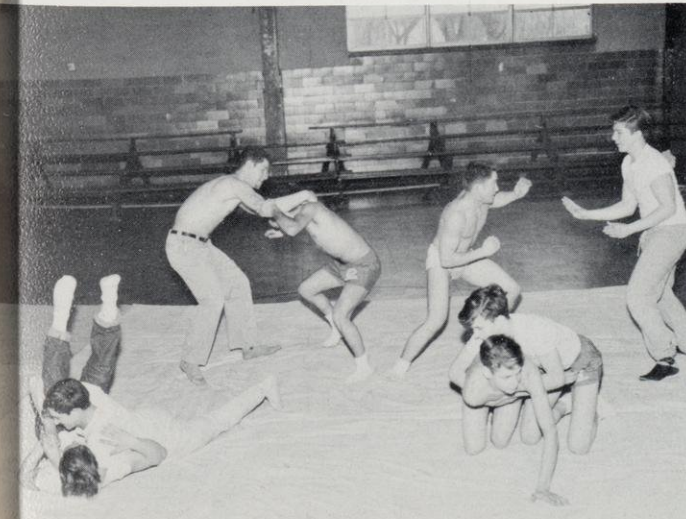
Mr. Brys, who is in charge of the commercial department, teaches beginning typing classes and shorthand, besides advanced typing. Office Practice replaces the latter during the second semester. He is in charge of tickets and keeps score at basketball games.

BOYS' PHYSICAL EDUCATION



GENE BIGLEY

Mr. Bigley is our boys' physical education instructor. He is also our baseball coach and assistant basketball and football coach. A lot of credit is due him for his great job with our winning football team.



GIRLS' PHYSICAL EDUCATION



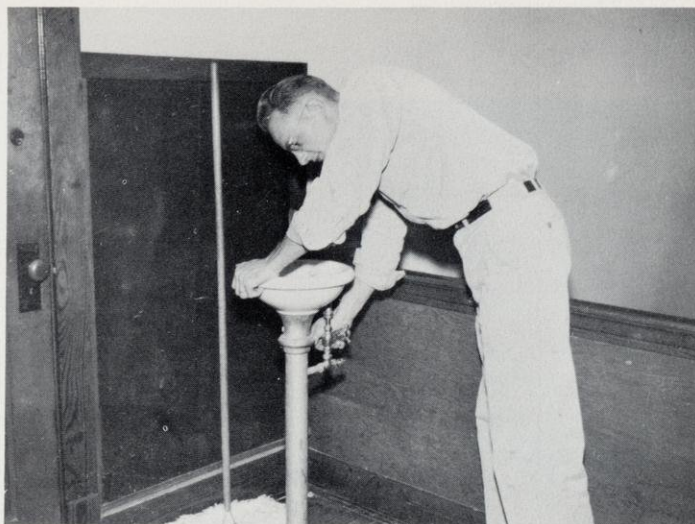
RUTH BELICH

Mrs. Belich has done much to further girls' athletic activities, besides teaching health and physical education to the girls. G.A.A. was very active, and a Pep Club was organized. Mrs. Belich was adviser for our cheerleaders.

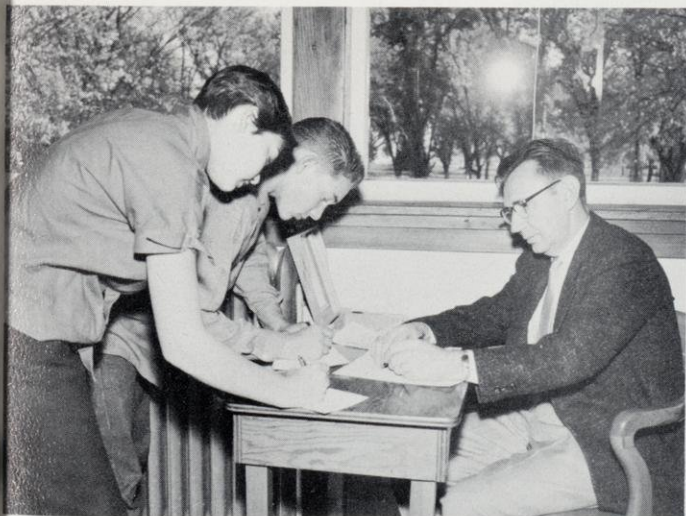




Waterford High's ever-sparkling floors are evidence of the efficient service given by our custodian, Dave Halbach.



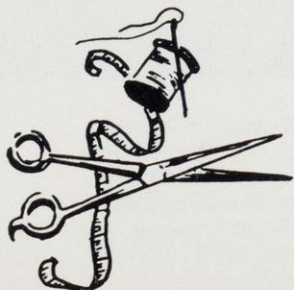
DAVID HALBACH



Each time a student was absent or tardy he called on Mr. Daugherty for an excuse to return to classes. Jeannette Hendricks and Jack Hanson are shown filling out their cards before receiving their excuses.

MRS. C. B. EDWARDS

Miss Fisher returned to the home economics department in late October to find her classes well organized under the excellent supervision of Mrs. Edwards.





Briski, Holick, Malczewski, Gail Mittelstaedt.



TOP ROW: Blodgett, Jones, Briski, A. Hegemann, F. Borowski, R. Arndt, T. Anderson, Albright, Folts.
 2nd ROW: N. Klasen, Davis, Bott, Barry, Behling, Kempken, Lebrick, Lau, Daniel Armes.
 3rd ROW: Holick, Gronczewski, Glueck, Fisher, Judy Cole Brandon, L. Greeley, Dieterle.
 4th ROW: Alaxson, Bredeman, Kaebisch, Erickson, D. Dixon, Aguilar, M. Cutsforth, Dale Armes, Jeremy Grajek.

FRESHMEN

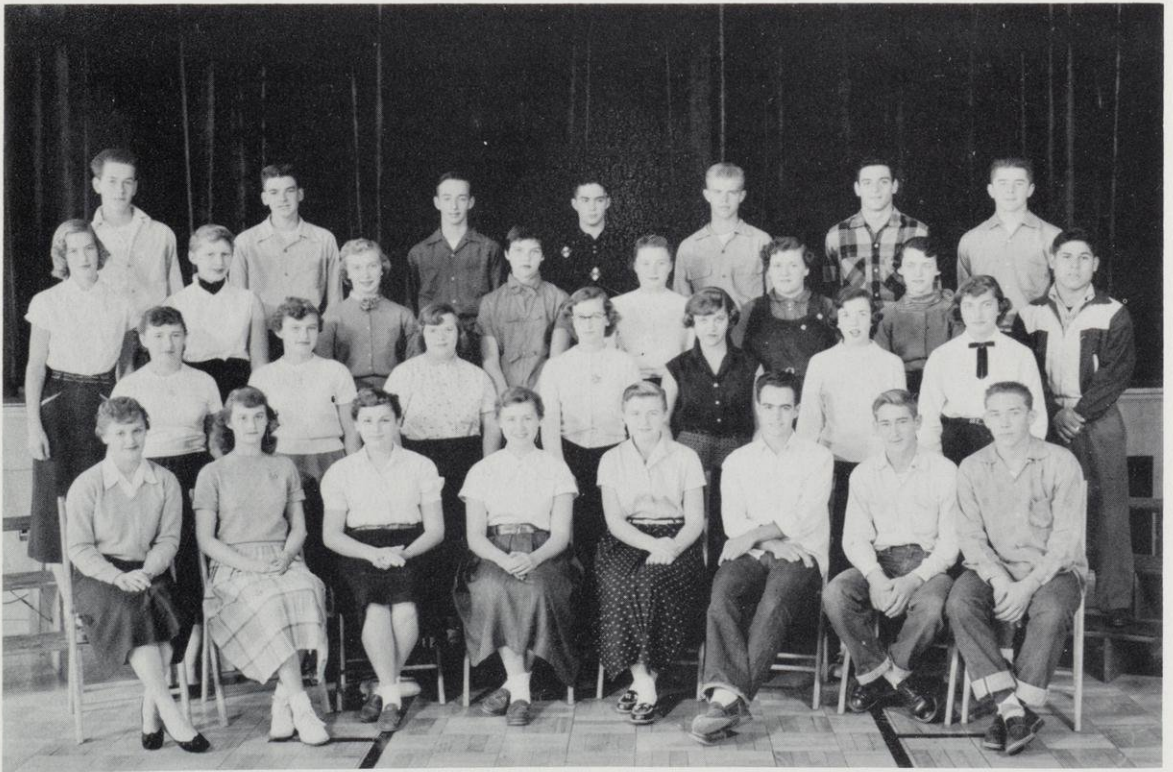
At the beginning of the 1955-56 school year, we had 69 students. Carole Behling represented the freshman class on the Homecoming court. Our representatives in the Student Council were Joellen Fisher and Ray Kempken. LaVerne Dieterle was elected by the student body as a member of the cheerleaders. The freshman class topped all others in magazine sales with Alvin Hegemann leading all the way with \$100 worth of subscriptions.



TOP ROW: Pulaski, W. Witty, W. Madden, Sholtis, Stachowiak, J. Stanosz, G. Nelson.
2nd ROW: Roeglin, Rutowski, J. Schmidt, Gail Mittelstaedt, Lutze, Whelan, Luerssen, E. Waldron.
3rd ROW: Pike, Reesman, Malczewski, B. Meyers, Ruhland, Joyce Rademacher, Ringe, Zabel.
4th ROW: Weed, Smith, M. West, Orth, Ludwig, Sadler, S. Neitman, Standiford, Zoellick.

SOPHOMORES

Nancy Halverson and Herb Janke were chosen by the sophomore class to represent them in the Student Council. Harry Curzan was chosen alternate for the Student Council. The representative on the court of honor at the Homecoming Dance was Betty Hansen. Karen Lewis and Mona Flink helped to cheer our teams to victory. Mrs. Belich and Mr. Ongaro were the class advisers. The highest salesman in the magazine sales was Carol Horner. Joyce Sheard, Judy Hruz and Flora Beaumont were in Massed Band. Evelyn Schuster, Nancy Halverson, Diana Gulczynski and Carol Horner participated in the Massed Chorus.



TOP ROW: Curzan, Dufenhorst, Cahill, Edwards, J. Greeley, Gruenwald, Dietz.
2nd ROW: J. Hegeman, Christiansen, Gulczynski, J. Hendricks, D. Anderson, S. Arndt, Beaumont, Henry Benavides.
3rd ROW: Margie Brunlinger, Buse, J. Cutsforth, Fide, Grosskopf, R. Flink, B. Hansen.
4th ROW: Halverson, Hruz, Horner, Janiszewski, Hoffman, R. Klasen, Janke, Jack Hanson.



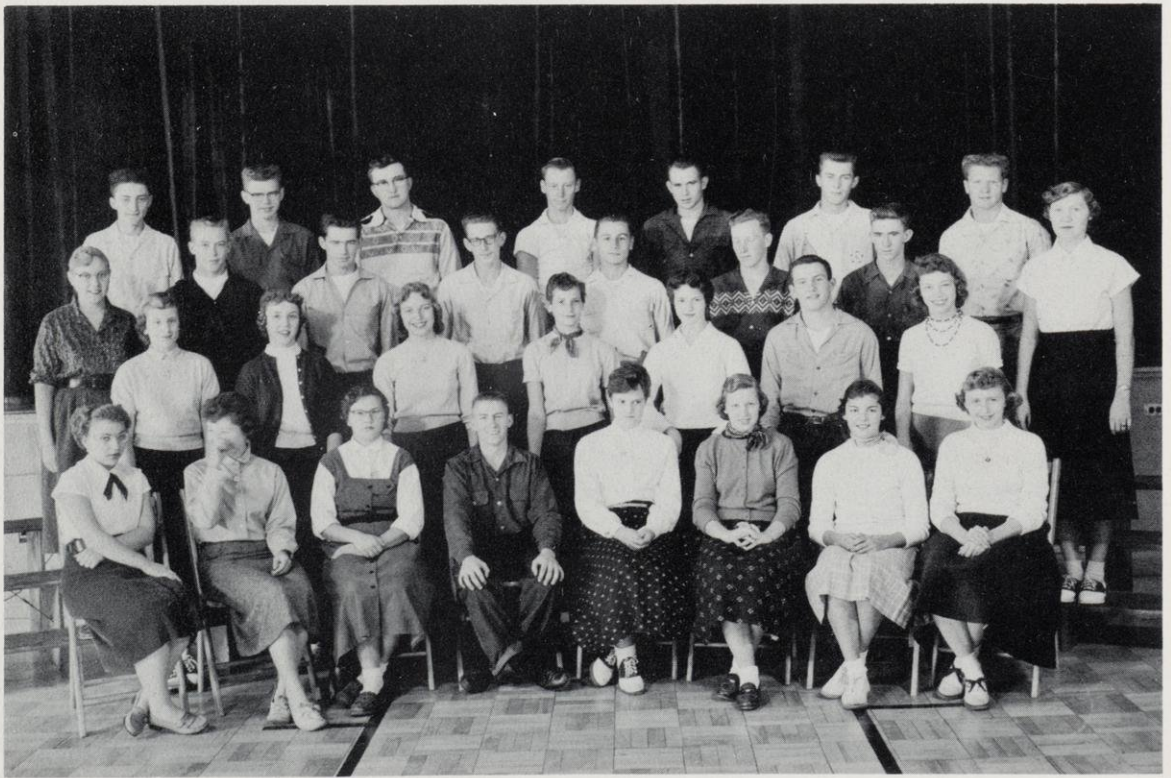
Cahill, Lewis, Hansen, Dufenhorst.



TOP ROW: Pakulski, Behrens, C. Routley, Young, C. Tindall, Thrun, Lackey, Fitzgerald, Victor, W. Schuster.
 2nd ROW: E. Staebler, Sheard, Sas, Mitsch, Mayer, D. Mittelstaedt, Magnuson, Kasulke, P. Paulson, W. Dixon.
 3rd ROW: S. West, Wisniewski, Satterstrom, Meredith, Peterson, S. Schmidt, Stanosz, Lewis, Metcalf.
 4th ROW: M. Saltzman, R. Fries, Kramer, Woods, Natalie, Smetana, Weber, E. Schuster, Thomas, Rohda.



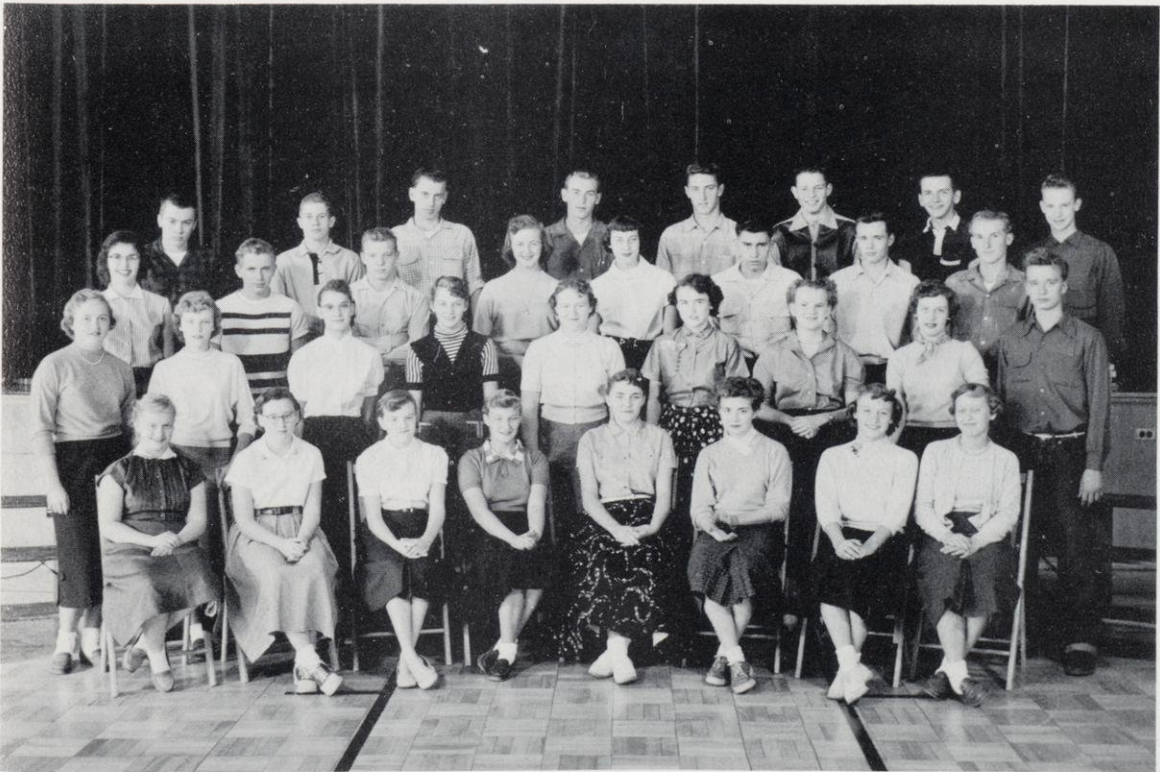
Frenz, Henkel, Lueneburg, Gary Mittelstaedt.



TOP ROW: Michl, Wiesenthal, Stark, Modrak, F. Witty, Lueneburg, Reeves.
 2nd ROW: Schattner, Soward, Gary Mittelstaedt, Wheeler, Raasch, Kruse, Paddock, Wells.
 3rd ROW: C. Schroeder, Miller, Kuntz, Simon, Norton, Prager, Murray.
 4th ROW: Walczak, D. Paulson, Kondell, Robel, Rozelle, F. Schmidt, Whalen, Tuinstra.

JUNIORS

At the beginning of our 1955-56 school year, the Junior Class had sixty-eight members, but some moved away. In late February, Mary Blodgett came from Central High School to join us, and we ended the year with sixty-five. The class won second prize in the Homecoming parade with the float, "We'll Clean 'Em Up." During the football season rehearsals were going strong for our play "Best Foot Forward." We gave two cafeterias to raise money for our Prom, the theme of which was "Blue Hawaii." The Student Council had three of our classmen in their midst. Two were officers. Mary Hoppe was treasurer and Sandy Chic, secretary. Milt Soward was the other representative. All in all the juniors had an eventful year.



TOP ROW: Allan, Fieblekorn, Bakke, Bissonnette, Henkel, Curnow, Carew, Drumel.
2nd ROW: Frenz, Hunter, Glenzer, Kasprzak, Heck, Doleshal, Don Banta, Garland.
3rd ROW: Johnson, Chic, Jeannette Fredrick, Johanna Fredrick, Duve, Erwin, G. Guenther, Boehles, Dean Banta.
4th ROW: Kauppi, Edwards, Brown, Jo Grajek, Hoover, P. Cole, Bubenik, Hoppe.

HONORS



Margo Mattson

VALEDICTORIAN

Margo's quiet efficiency and graciousness of manner soon established her as a favorite with the Class of '56, and she was elected to hold many offices and to receive special honors. The annual staff elected her to the co-editorship of the 1956 Emerald. She participated in chorus and Massed Chorus, G.A.A., dramatics, journalism, and all of the school's major social events. This year's valedictorian combined charm and dependability to a remarkable degree.

D. A. R. AWARD



Naomi Paulson



Principal Clifford Eastman is shown presenting the Daughter of American Revolution Award to Naomi Paulson. The award - made by the faculty - is based on qualities of dependability, leadership, service, and patriotism.

SALUTATORIAN

Naomi represented her class and her school in a variety of ways and always with distinction. You might find her leading the student body in a school yell or song; presiding at a meeting of the Student Council; working on a G.A.A. committee; singing in a Massed Chorus; attending rehearsal for a school play; working on a term paper for some class; or speaking at an inter-school Forensics Meet. Her high school years were filled to the brim with exciting, joyful, and profitable experiences. This year's salutatorian was the faculty choice for the D. A. R. Award.



TOP ROW: Len Hegeman, Dick Mittelstaedt.
BOTTOM ROW: D. Borowski, J. Scherbarth.



The Senior Class began the year by electing their class officers. These included Leonard Hegeman, president; Dick Mittelstaedt, vice-president; Judy Scherbarth, secretary; and Darlene Borowski, treasurer. They then chose Dennis Donath, Daryl DuFrane, Joann Rademacher, and Naomi Paulson to represent the class in Student Council. Naomi Paulson was elected President of the Council.

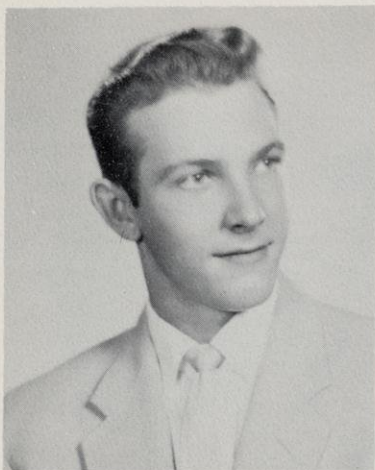
Royalty for the Homecoming Dance were Daryl DuFrane and Donna Paulson as king and queen respectively. Representing the Senior Class was Agnes Grevstad on the court of honor.

Through the year the class had concessions at games, noon candy sales and cafeterias, and they also took charge of a box luncheon for the Forensics Meet held here.

Agnes Grevstad and Marvin Nelson reigned as king and queen of the Senior Christmas Dance, "Silver Bells", on December 23, 1955. On the court of honor were Judy Scherbarth, Dennis Donath, Margo Mattson, and Frank Chervenka.

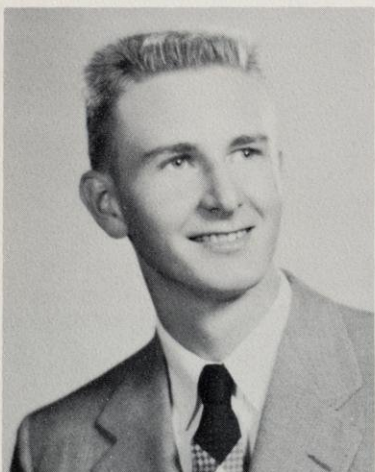
The last event of the year was the class play, which consisted of three short plays: The High Window, This Way to Heaven, and a light comedy.





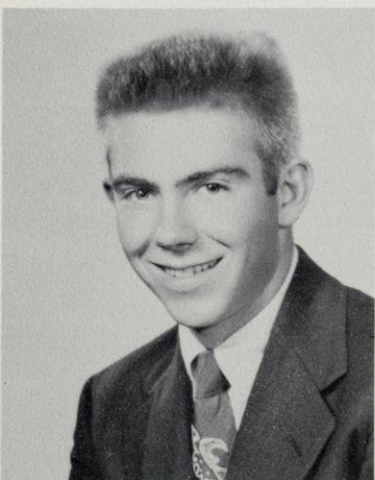
RONALD BALDWIN

Ronald was active in football, basketball, and baseball. He worked on the Emerald Echo for two years. His class elected him president as a sophomore and he represented the class in the Student Council in his junior year.



CORDELL BARKER

Cordell played in the band all through his high school years. He belonged to the Projector Club all four years and played basketball as a sophomore. He worked on the Emerald Echo and was Business Manager of the Emerald Annual.



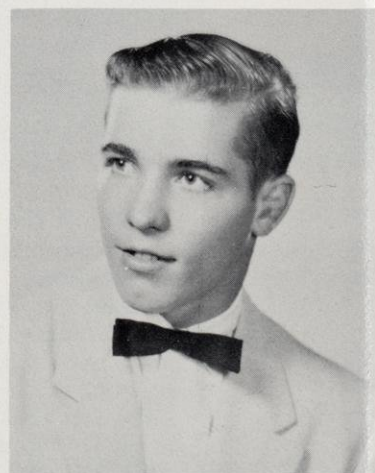
ROGER BAUMAN

Roger played baseball as a freshman. He worked on the Emerald Echo, played football, and had a role in the junior class play. As a senior he took part in forensics.

Tom was an active member of the Projector Club during his last two years at Waterford High. He was willing to offer a helping hand with class activities.



THOMAS BECKER



RAYMOND BOELTER

Ray's popularity with his classmates was rewarded by his election as class secretary in his junior year. He offered a great deal of assistance in the preparation of our Junior Prom.

Darlene has belonged to chorus, G.A.A., Emerald Echo staff, dramatics, photography club, forensics, junior class play. She was on the Executive Board of G.A.A. her junior year. She was Co-Editor of the Emerald Annual.



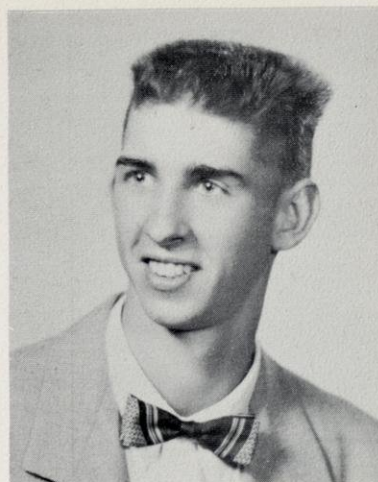
DARLENE BOROWSKI



MARTHA BRUNLINGER

Martha came to Waterford from East Troy to begin her sophomore year here. She worked on the Emerald Echo, belonged to G.A.A. and chorus and was an active member of the Library Club.

Frank has played basketball and baseball. He was secretary of the Projector Club for two years and also secretary of the Lettermen's Club as a senior. As a freshman, Frank sang in the chorus.



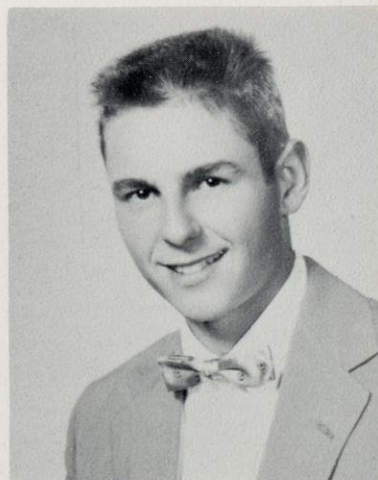
FRANK CHERVENKA

Louise has belonged to chorus for three years. She has been a member of the Emerald Echo staff and a member of G.A.A. for three years.



LOUISE COTTINGHAM

Rufus King lost Dennis to Waterford at the beginning of his junior year. He had a role in the junior class play. He was chosen to go to Badger Boy's State. As a senior he belonged to Student Council, Projector Club, and was chosen to be on the senior dance court.



DENNIS DONATH



DARYL DUFRANCE

Daryl played golf all four years at Waterford. He played basketball and football, and was Homecoming King as a senior. He coached basketball his senior year and was a member of Student Council for two years.



DONNA FLINK

Donna transferred from Rufus King to begin her sophomore year at Waterford. She has been a cheerleader for two years and had a role in the junior class play. She belonged to G.A.A., worked on the Emerald Echo, and went out for forensics.

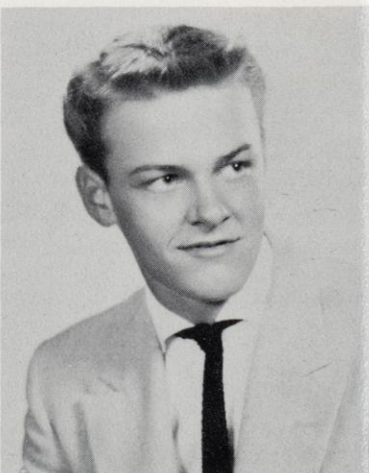


RICHARD FRANKE

Dick played basketball for four years and was captain, two years. He was freshman class president, member of "W" Club and Projector Club, worked on the school paper, and played baseball for three years.



AGNES GREVSTAD



KENNETH GUENTHER

Ken came to Waterford at the beginning of his junior year. He transferred from Rufus King High School. Ken has participated in golf during his two years at Waterford.

Carol was a great help on the Emerald Echo for three years. She participated in chorus for three years and belonged to G.A.A. her junior year.



CAROL HAFNER

Bob played baseball his first three years at Waterford. In his senior year he played football. He belonged to the Projector Club and played in the band all four years.



ROBERT HANSON

Carole has belonged to chorus for three years. She worked on the Emerald Echo and participated in the activities of G.A.A. As a senior she took part in for-ensics.

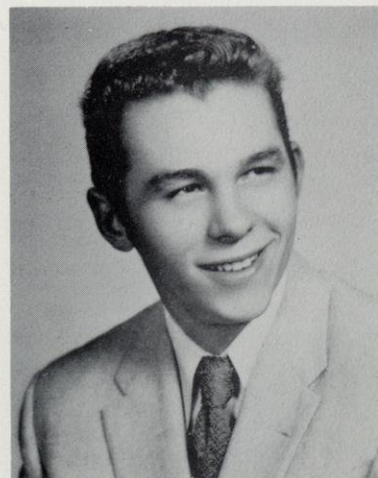


CAROLE HAYNE



JAMES HANSON

Len played football four years, and was King of the Junior Prom. He was vice president of the Junior Class, had a role in the play, and played baseball and basketball. As a senior, he belonged to the Letterman's Club and was class president.



LEONARD HEGEMAN

Jim helped out the band all four years. He played baseball in his freshman year and was baseball scorekeeper in his junior year. He belonged to the Projector Club and as a senior worked on the annual staff.

Lois has been a great help to our class. She has been on the Student Council for two years, one year as treasurer. She was a member of the junior play cast, chorus, Emerald Echo staff, and G.A.A. As a senior she is a member of the Emerald Annual staff.

LOIS HEGEMAN



GRACE HENDRICKS

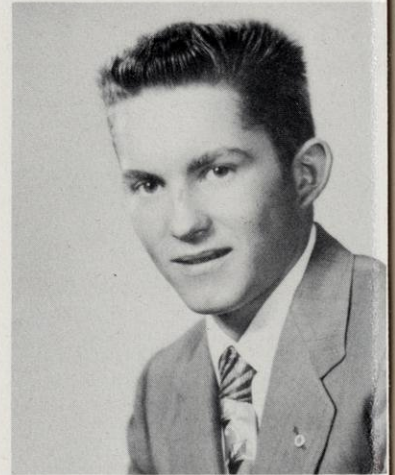


GLENELL HOLTZ

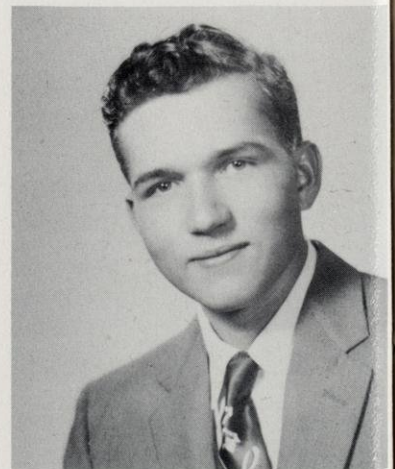
Grace has been a member of band for four years. She was class treasurer as a sophomore, worked on the Emerald Echo, belonged to chorus, and dramatics as a freshman. She is on the Emerald Annual staff.

Glenell was a member of chorus, G.A.A., the Emerald Echo and dramatics. She took part in the junior class play and also belonged to the Pep Club. She was a member of the Emerald Annual staff.

Garth played a great deal of football during his years at Waterford. During his senior year he coached the "B" squad.



GARTH HOTZ



GERALD JENSEN

Jerry was a member of Student Council as a freshman. He worked on the Emerald Echo during his sophomore year. He played in the band and belonged to the Projector Club.

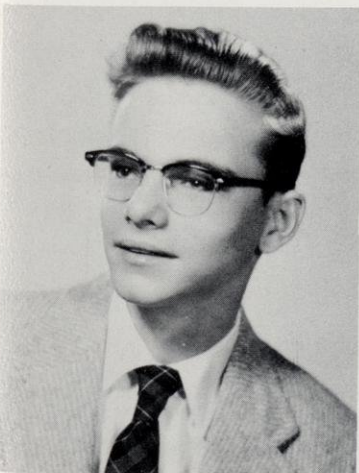
Fred
Club
Eme
year
years

G
ea
ch
ar

Fred was a member of the Photography Club as a freshman. He worked on the Emerald Echo during his sophomore year and sang in the chorus for two years.



FRED LENTZ



ALAN LIBERT

Glenbard High School lost Alan to us early in his sophomore year. He has chosen his subjects to prepare him for an anticipated career in business.

Duane came to Waterford from Glenbard to play football as a junior. He was a member of the Projector Club and the "W" Club during both his junior and senior years.

DUANE LIBERT



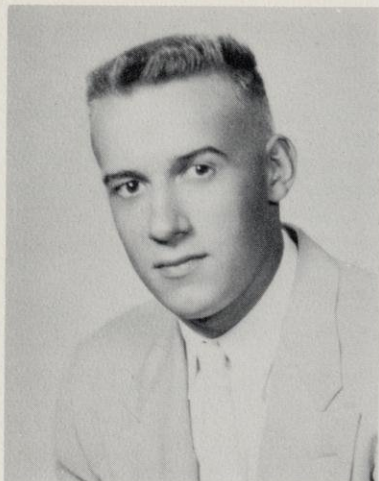
JEAN MADDEN

Jean was a member of the Student Council as a sophomore and represented the sophomore class on the Homecoming court. She belonged to chorus, G.A.A., and the Pep Club.



MARGO MATTSON

Margo was a class officer three years. She was in chorus, massed chorus, forensics, Pep Club, and G.A.A. She was in homecoming court as a freshman and the senior dance court. She worked on the Emerald Echo, was in the junior class play, and was co-editor of The Emerald.



GEORGE MAURER

George played football for Waterford during his freshman and senior years. He played baseball and belonged to the Letterman's Club and the Projector Club.

Dick played baseball, football, and basketball all four years at Waterford. He entered forensics, and was a member of the junior class play, student council, and the Letterman's Club, president. He was vice-president of the senior class.

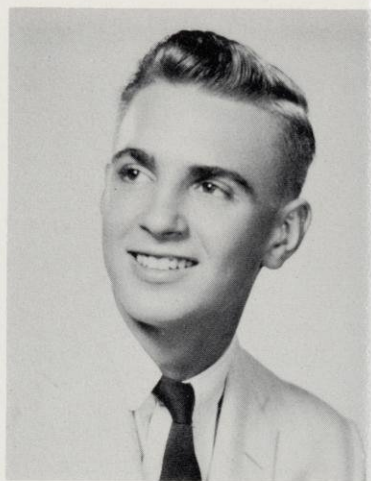
RICHARD MITTELSTAEDT



MARCIA MOSER

Marcia came to Waterford from Girl's Tech in the middle of her junior year. She spent her two years here participating in school activities.

Frank played football during his freshman and sophomore years at Waterford. As a sophomore, he worked on the Emerald Echo. As a senior he belonged to chorus.

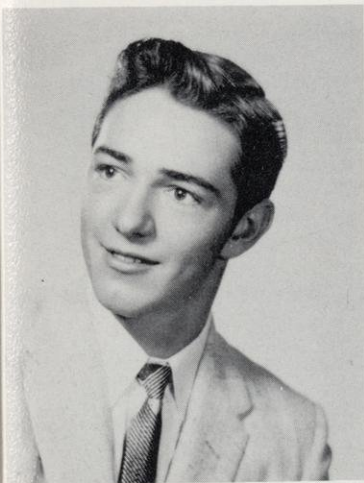


FRANK MUTSCH

Bob was vice-president of our class as a sophomore. He played baseball, basketball, and football. Bob was a member of the Letterman's Club for two years.

ROBERT NEITMAN

Marvin was president of the Projector Club his junior and senior years. He was chosen King of the Senior Dance. He played basketball and baseball and sang in the chorus for two years.



MARVIN NELSON

Dianne has belonged to G.A.A. for three years, and has been a member of chorus, dramatics, Photography Club, Emerald Echo, and Student Council. She was freshman class vice-president and participated in the junior play.



DIANNE RADEMACHER

Jo was secretary of the freshman class, and has belonged to chorus, dramatics, band, G.A.A., Student Council, Emerald Echo, forensics, junior class play, and Pep Club; president. She was chosen queen of the Junior Prom.



JOANN RADEMACHER



NAOMI PAULSON

Naomi, a cheerleader for three years, has been in G.A.A., chorus, forensics, the junior class play, Student Council; secretary and president. As a sophomore she worked on the Emerald Echo staff and the Emerald Annual Staff as a senior. She received the D.A.R. award.

Anita has belonged to G.A.A. for three years. She has been a member of chorus and the Emerald Echo. She participated in the junior class play and is also a member of the Pep Club.

ANITA RAGIO



MILLY ROUTLEY

Milly came to Waterford in the middle of her freshman year to remain at Waterford. She has been a member of the Emerald Echo staff and as a senior, she was president of the Library Club.



ARLENE SALTZMANN

Arlene has been a member of G.A.A. for three years. She has worked on the Emerald Echo as a freshman and has belonged to chorus for two years.



JUDY SCHERBARTH

Judy has been a member of the Library Club for three years, and has belonged to G.A.A., chorus, Student Council, and has worked on the Emerald Echo. She had a role in the junior class play and was secretary of the senior class.

Chorus was fortunate to have Barbara as a member for three years. She belonged to G.A.A. for two years and had a role in the junior class play, "Pride and Prejudice."



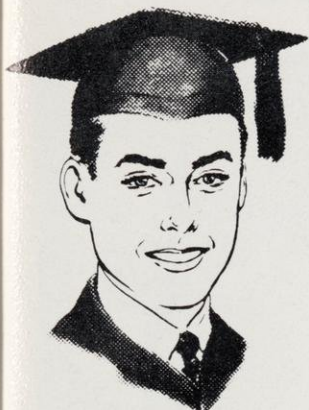
BARBARA SCHMIDT



RUTH SCHROEDER

Ruth has been a member of chorus all four years. She participated in the junior class play, belonged to Pep Club, and spent much time in the library as a member of the Library Club.

Rita
last
an ac
G.A.
ior c



WILLIAM STAEBLER

Bill has played golf for three years. He played in the band and belonged to the Emerald Echo staff, Projector Club, Lettermen's Club. He also was Manager of basketball as a junior.



RITA WAGNER

Rita came to Waterford to finish her last two years of high school. She was an active band student and belonged to G.A.A. She also had a role in the junior class play.



NANCY WALDRON

As a freshman, Nancy was a member of the Emerald Echo staff. She sang in the chorus, and took part in Forensics two years. As a senior she belonged to the Pep Club.

CLASS COLORS—Green and White

CLASS FLOWER - Red Rose

CLASS MOTTO -The word "American" ends in "I can".

SENIOR PROM



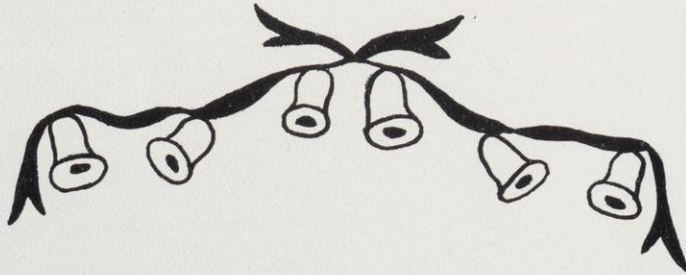
QUEEN

Agnes Grevstad



KING

Marvin Nelson



"Silver Bells" was the theme given to the semi-formal Christmas Dance which was held on December 23. It was the annual senior dance.

The royalty for the evening were Queen Agnes Grevstad and King Marvin Nelson. Those who were chosen for the Queen's court were Judy Scherbarth, Dennis Donath, Margo Mattson, and Frank Chervenka.

In the center of the gym stood a beautiful, large Christmas tree, covered with silver tinsel and spotted with blue lights. Along the sides of the gym were many more trees. Tables were placed at both ends of the gym.

Silver bells hung at the windows from red ribbon bows and large silver bells over the stage carried out the theme.

Bud Wilbur furnished delightful music.

DRIVER'S EDUCATION



LEFT TO RIGHT: Satterstrom, J. Hegemann, Mitsch, Marge Brunlinger, Dufenhorst, Cahill.

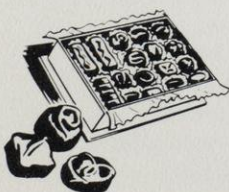
Drivers' Education was taught by Mr. Mueller. On Monday and Wednesday he taught the sophomore girls, and on Tuesday and Thursday he taught the sophomore boys. He instructed them in the handling and upkeep of a motor vehicle. A card was given to all those completing the course, exempting them from the written test at the time drivers' licenses are applied for.



CALENDAR



- August 30. Teachers had a meeting.
31. Freshman Registration.
- September 1. Upper Classes registered.
2. Teachers had a meeting.
6. First day of school.
14. Football game vs. St. Mary's of Kenosha. Lost 6-12.
19. Election of cheerleaders. Assembly: Taflin Trio.
23. Football vs. Rochester. Won 18-0. Dance.
30. Football vs. Slinger. Won 14-0. Class officers elected.
- October 7. Football vs. Pewaukee. Won 19-6. Senior dance.
8. Journalism trip to Madison.
11. Library trip to Milwaukee.
13. Bonfire and snake dance.
14. Homecoming. Football vs. Walworth. Won 6-0.
19. Seniors had a fudge sale.
20. Commercial trip to Milwaukee.
21. Tom Glazer assembly.
Football vs. Union Grove. Won 19-13.
24. Senior girls had pictures taken.
25. Senior boys had pictures taken.
26. Football vs. Madison Central. Won
27. Annual pictures taken.
- November 2. Football vs. Hartland. Won 12-6.
3. Teachers convention.
4. Teachers convention.
11. Veterans' Day program at Ford Theater.
15. Basketball vs. Genoa City. Junior Cafeteria.
17. Forensic trip to Whitewater.
18. Junior class play.
19. Junior class play.
21. Magazine sales began.
23. Football trophy presented.
24. Thanksgiving vacation.
25. Thanksgiving vacation.
- December 2. Basketball vs. Hartland.
6. Basketball vs. Pewaukee. Magazine sales ended.
13. Basketball vs. Sharon.
14. Band and chorus concert.
16. Senior pictures delivered. Basketball vs. Rochester.
20. Basketball vs. Genoa City. Junior class rings delivered.
23. Senior dance. Christmas Vacation began.



OF EVENTS



- January. 3. School began again. Basketball vs. St. John's
6. Basketball vs. Norris
10. Basketball vs. East Troy.
20. Basketball vs. Hartland.
25. Annual pictures taken.
26. Senior cafeteria.
27. Basketball vs. Pewaukee.
28. Dance.
31. Basketball vs. Williams Bay.

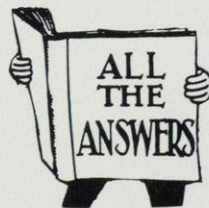


- February 3. Basketball vs. Rochester
10. Basketball vs. Norris.
16. Basketball vs. Union Grove.
21. Local forensics contest.
22. Movie.

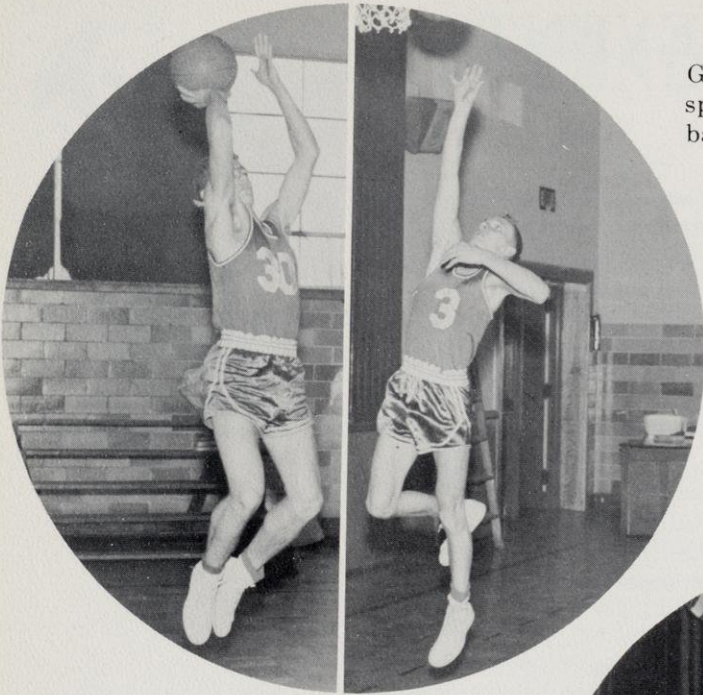
- March 2. League Forensics
17. District Forensics

- April 4. Baseball vs. Horlick.
12. Baseball vs. Pewaukee.
13. Baseball vs. Horlick.
14. State Forensics contest.
18. Band and chorus concert.
19. Baseball vs. Rochester.
23. Baseball vs. Slinger.
24. Baseball vs. St. Marys
26. Baseball vs. Hartland.
27. Senior Class play.
28. Senior class play.
28. Whitewater vocal festival.
30. Baseball vs. Norris.

- May. 3. Baseball vs. Union Grove
4. Baseball vs. St. Marys.
4. Junior Prom.
5. Whitewater Band festival.
8. Picnic.
10. Open house.
11. Visiting Day.
15. Senior Banquet.
20. Baccalaureate.
24. Commencement.

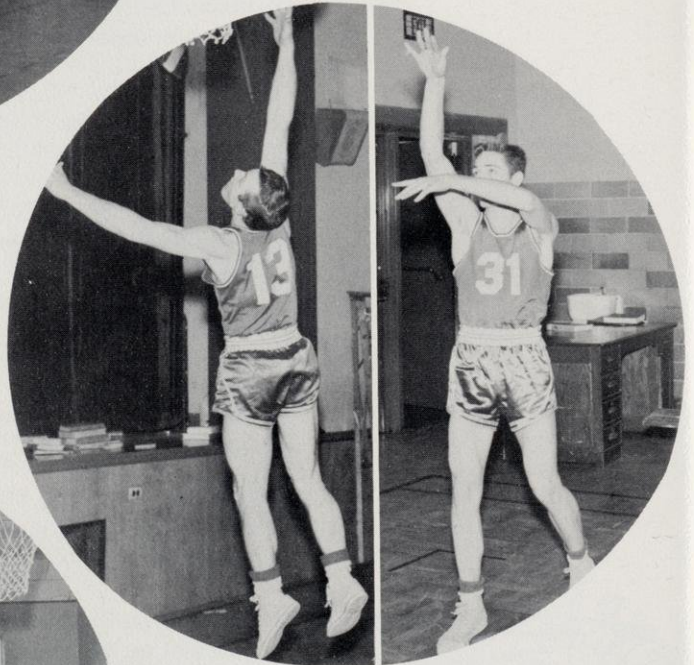


Graduation on May 24 will prove to be responsible for the loss of these players on the basketball team.



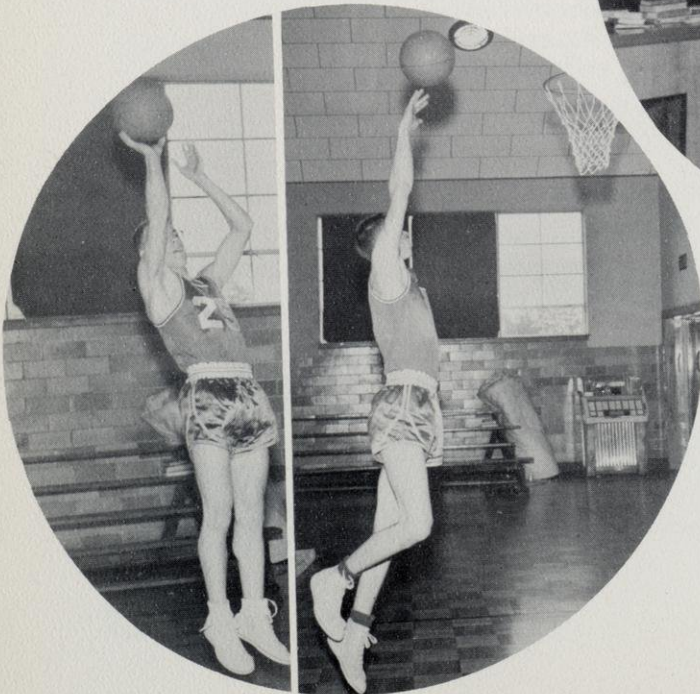
Dick Mittelstaedt

Bob Neitman



Ronnie Baldwin

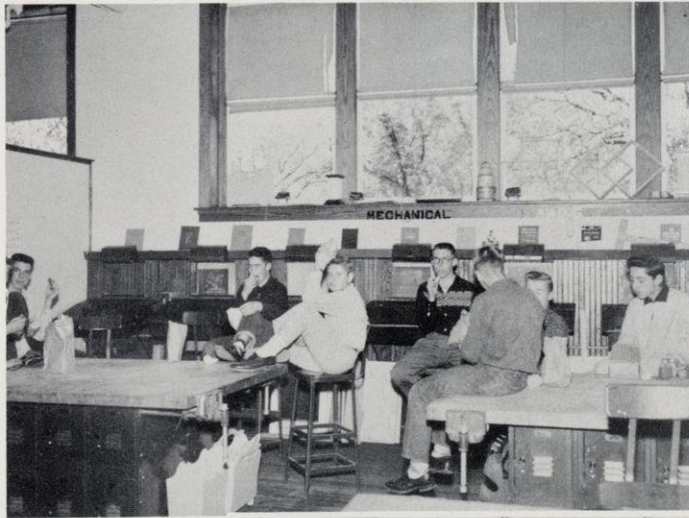
Marvin Nelson



Dick Franke

Frank Chervenka

NOON ACTIVITIES



BUSSES



Bus transportation was provided to our rural students by a fleet of busses owned by Verne Stalbaum and operated by an excellent crew of drivers. We are fortunate indeed to have this fine service to get us to school daily as well as to out-of-town athletic events and to various spots of interest for field trips.

The drivers this year have been:

Verne Stalbaum

Glenn Albee

Robert Hembrook

Robert Irwin

Alex Stasnopolis

Gene Bigley

Robert Mueller

Nick Nelson

Harry Mealy, Jr.

Robert Mealy

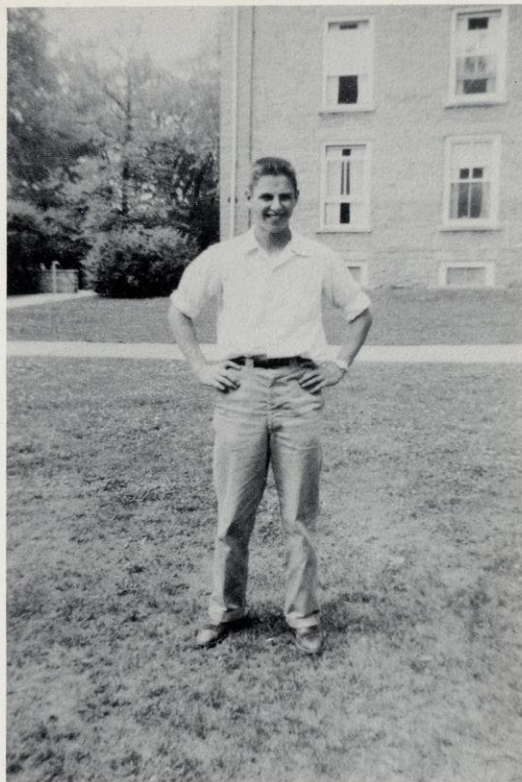


BOYS' STATE



Last year, Dennis Donath was fortunate to be chosen to go to Badger Boys' State at Ripon. He spent a very enjoyable week learning about the principles of our state government.

This opportunity is offered to a junior boy from Waterford High each year. The American Legion is the sponsor for the representative selected by the faculty.



Dennis Donath

DORMITORY





Congratulations
And Best of Luck
To The 1956
Graduates

Four things a man must learn to do,
If he would make his record true,
To think without confusion, clearly,
To love his fellowmen sincerely,
To act from honest motives purely,
To trust in God and Heaven securely.

ROCKROHR'S SUPER MARKET



EDWIN C. ROCKROHR

Groceries, Fresh Fruits
Vegetables, Frozen Foods

MILES ANDERSON

Meat Department
Dairy Department

CONGRATULATIONS TO THE SENIOR CLASS OF 1956



Complete Banking Services

Drive-In Window and After-Hour Depository
Safe Deposit Boxes to Rent

Open your Checking or Savings Accounts
with this Up-To-Date Bank

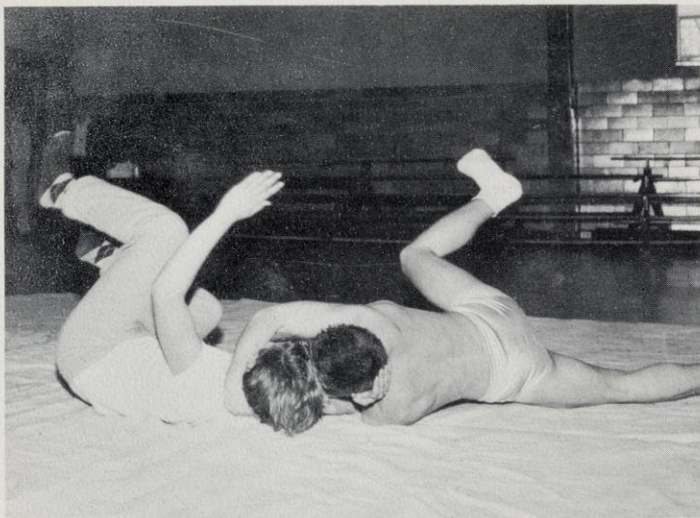
Lots of Free Parking Available

WATERFORD COMMUNITY BANK

Waterford, Wisconsin

Member of F.D.I.C.

217 N. Milwaukee St.
Phone 106



Among the events of the boys' gym classes was wrestling. A tournament was held March 28 in the gym to determine a champion.



Band lessons were given to all band members wanting them, by Mr. Davison.



Cheerleaders led a drill to set the college atmosphere for the junior class play, "Best Foot Forward."

TOP ROW: Fran Schmidt, Georgann Kuntz, Barbara Simon, Darlene Bubenik, Audrey Hoover, Lorriane Frenz, and Georgia Schattner.
 BOTTOM ROW: Joann Grajek, Carol Schroeder, and Dolores Brown.

Success to the Graduates
DUFENHORST'S PRAIRIE HARDWARE
Caldwell, Wisconsin
Telephones
Big Bend 5-1344 Wtfd. 23-J-21

BIG BEND FOOD MARKET
Fruits-Vegetables-Meats-Groceries
John Kuntowski - Prop.
Steve Krzman, Henry Kent, Mgrs.
Tel. Big Bend 5-1181
Hwy. 24 and "F" Big Bend, Wis.

THE MUSIC MART
Burlington,
Wisconsin
Everything For The
Waterford High School Band

Compliments of
STEINKE HARDWARE CO.
Plumbing - Heating
Waterford, Wisconsin

MEALY'S
Day or Night
Ambulance Service
Emergency Phone 172
Waterford, Wis.

BARR'S SHELL SERVICE
Corner of Highways
36-100-45
Phone HA 5-9941

SCHMIDT'S SERVICE STATION
10 Miles S.W. of Milwaukee
on
Highway 36 (U.S.45)
2 Blocks S.W. of Hy. 100
Phone HA 5-9906

"DICK'S RED BELL"
Market, Grocery, And
Locker Plant
W. Main St. Tel. Wtfd. 107-W
Everything in Fine Foods

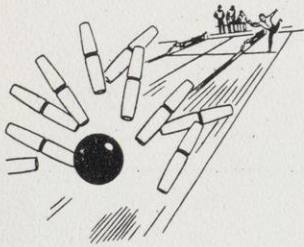
Compliments of

WIND LAKE

BUSINESS MEN'S ASSOCIATION



Holtz, Borowski, Jo Rademacher, J. Madden, Scherbarth.



Waterford High School was represented in league bowling at Windlake Bowl by the Jazzbos.



POM-POM HELPERS

BACK ROW: Grevstad, Packard, Jo Rademacher, Miller, Johnson, Waldron.
 FRONT ROW: A. Ragio, Chic, D. Flink, Whalen, Holtz, N. Paulson.



CARLSON INSURANCE AGENCY
STATE FARM
Auto - Life - Fire
Phone 817
Waterford, Wisconsin

WAGNER & JURANEK
In Burlington---Since 1919
Complete line of minor boys' wear
-Dress Right-
You Can't Afford Not To

WATERFORD

Mielke Motors
Dr. Dietz
Auterman's Launderette
Leighton Hardware
Bakke Electric Co.
Rittmann's Dept. Store
S & S Bowling Lanes
Mrs. Freda Rebstock
Archie's Shell Service
Ford Theater
Becka's Beauty Shop
The Waterford Post
Hembrook's Friendly Service
J. L. Hall, D.D.S.
Oasis Drive-In
Hegemann Electric
Helen's Style & Gift Shoppe
S. Peterson Bottled Gas Service
Wilbur Lumber Co.
Stalbaums Garage
Arcade Restaurant
Albee's Restaurant
Grebe Excavating & Tower Garage
Waterford Floor Covering
Allan E. Jones
H. Wm. Bardenwerper, M.D.
Tichigan Lake Canteen
Gerry's T.V. & Radio Service
Alex Engel Implement Co.
Dr. S. M. Mucci
Ken's T.V. & Radio Service
Stephen Dirks, D.V.M.
Beck's Food Market
Smith-Huening Agency
Waterford Mill

BURLINGTON

Peiters Men's Wear
Verick's Shoe Store
Weis Implement
The Fashion Shop
The Sport Mart
Wee Moderns
Academy Cleaners
Glaser Hardware
Herrman Jewelers
Pieters Bros.

LAKE DENOON

Morgenroth Plastering

HALES CORNERS

E & H Farm Machinery

BEAVER DAM

Crowell-Collier

NORTH CAPE

Andrewson's Store

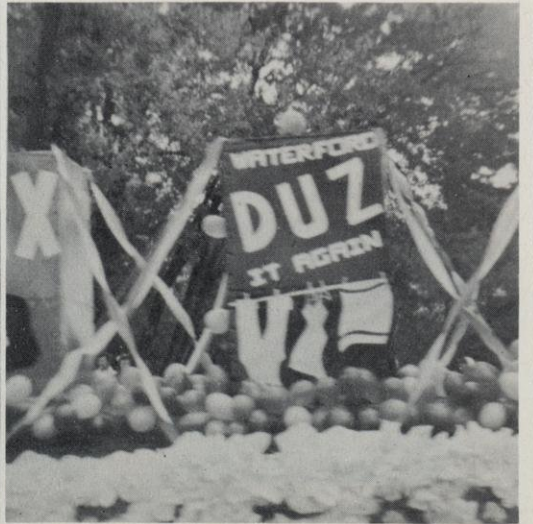
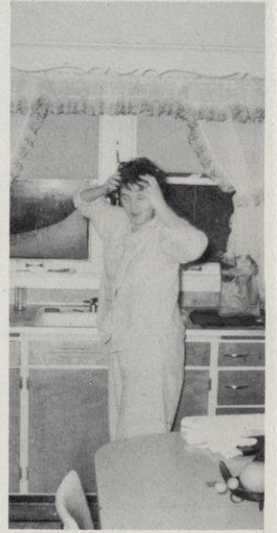
DURHAM

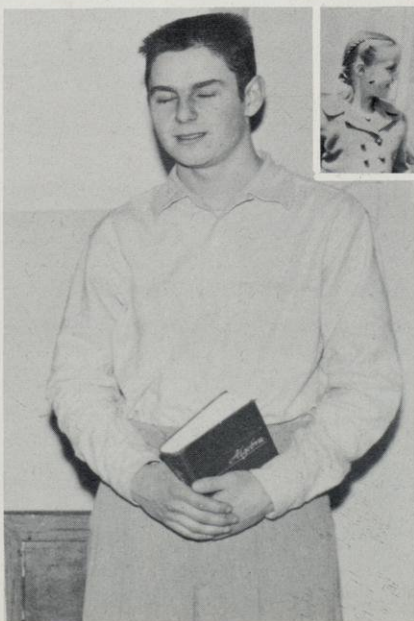
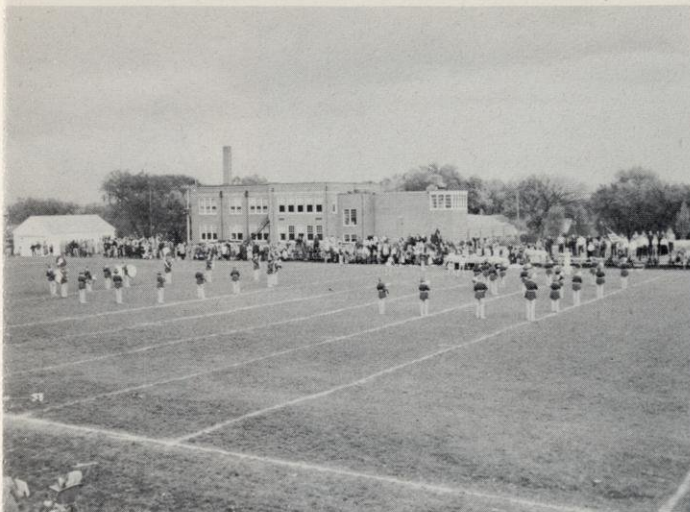
W. Bosch

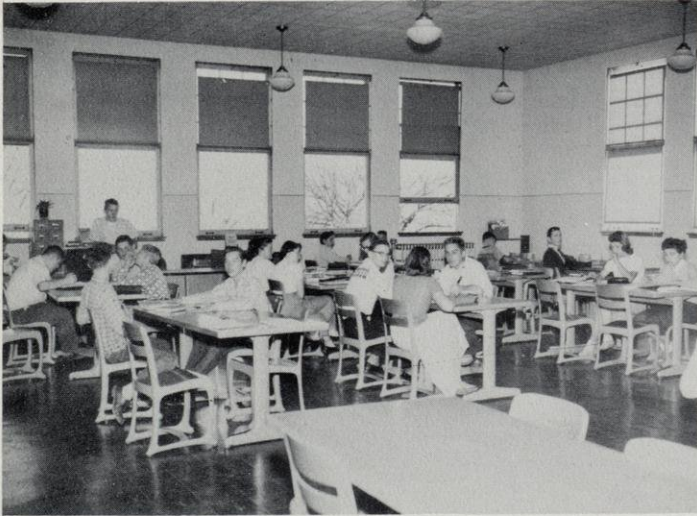
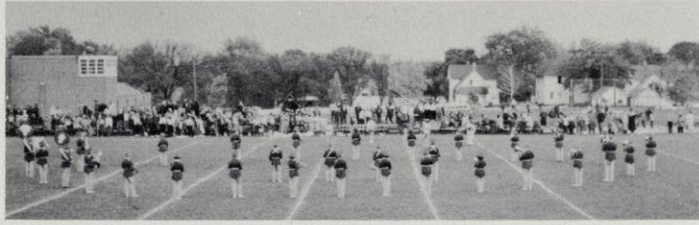
RACINE

Progressive Dairy Co.









AUTOGRAPHS

