



**LIBRARIES**  
UNIVERSITY OF WISCONSIN - MADISON

## **PRECLUDE Pericardial Membrane advertisement.**

[s.l.]: [s.n.], 1993

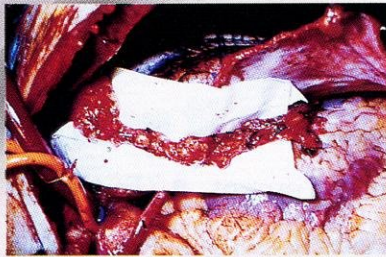
<https://digital.library.wisc.edu/1711.dl/SOHGRQ5FYVG2R8X>

<http://rightsstatements.org/vocab/InC/1.0/>

The libraries provide public access to a wide range of material, including online exhibits, digitized collections, archival finding aids, our catalog, online articles, and a growing range of materials in many media.

When possible, we provide rights information in catalog records, finding aids, and other metadata that accompanies collections or items. However, it is always the user's obligation to evaluate copyright and rights issues in light of their own use.

# When the lifeline is fragile...



*Photography courtesy of Raul Burgos, M.D.*

## protect the internal mammary artery with **PRECLUDE Pericardial Membrane**

*A GORE-TEX® Surgical Membrane Product*



**PRECLUDE**

**PERICARDIAL  
MEMBRANE**

W.L. Gore & Associates, Inc.  
P.O. Box 2300, Flagstaff, Arizona 86003  
For Technical Information 800-881-2186  
For Ordering Information 800-528-8763

GORE-TEX® and PRECLUDE are trademarks of W.L. Gore & Associates.  
© 1994 W. L. Gore & Associates, Inc. 11/94



Creative Technologies  
Worldwide