



The daily cardinal. Vol. XXXIV, No. 129 March 25, 1925

Madison, Wisconsin: University of Wisconsin, March 25, 1925

<https://digital.library.wisc.edu/1711.dl/YSX6ORO7MD6K38E>

<http://rightsstatements.org/vocab/InC/1.0/>

The libraries provide public access to a wide range of material, including online exhibits, digitized collections, archival finding aids, our catalog, online articles, and a growing range of materials in many media.

When possible, we provide rights information in catalog records, finding aids, and other metadata that accompanies collections or items. However, it is always the user's obligation to evaluate copyright and rights issues in light of their own use.

STYLE

The latest information on styles is found on pages 8 and 9.

The Daily Cardinal

WEATHER

Fair today and tomorrow increasing cloudiness. Continued mild temperature.

VOL. XXXIV. NO. 129

UNIVERSITY OF WISCONSIN, MADISON, WEDNESDAY, MARCH 25, 1925

PRICE 10 CENTS

300 SENIOR MEN ATTEND BANQUET, WELCOME LITTLE

Mason, Diebold, Little Give Speeches; Quartet Sings Three Songs

Three hundred men of the senior class attended the senior stag banquet at Luther Memorial church yesterday evening, listened to stirring speeches by George E. Little, Prof. Max Mason and Marshall Diebold and demonstrated to the new director of athletics true Wisconsin class spirit.

A toast, "On Wisconsin," was sung before the banquet and between courses Robert C. Nethercut '25, led in singing "I've Been Working On the Railroad," and "Liza Jane." The Haresfoot stage orchestra, and Roy Goodlad '27 and Burney Solbraa '26 were unable to be present.

Diebold Welcomes Little Following the banquet, a quartet consisting of Clarence Nyhus I. I. first tenor, Dan Vornholt '26, second tenor, Eugene Leonardson '26, baritone, Lloyd Lentzner '25, bass, with Nethercut at the piano, sang "Songs To Thee, Wisconsin," "Mah Lindy Lou," and "Little Liza Jane."

John L. Bergstresser, class president, acting as toastmaster, introduced the speakers.

The first speaker, Marshall Diebold, captain of the basketball team, welcomed Little in behalf of the men of the senior class.

Max Mason, professor of physics, the next speaker, told of the days of Pat O'Dea, Ikey Karel, the Yale football game and of Wisconsin tradition. In closing, he reminded the men that members of the faculty were the most enthusiastic rooters for the Cardinal teams.

"I want the men of Wisconsin to cut out the fussing, leave canoes alone and do the work of real red-blooded men," said Little, director of athletics.

"There should be 175 men on Randall field for football practice. You men of the class of '25 should see that every man weighing over 160 pounds is out for athletics."

Suggests Track Send Off "At a banquet last Thursday night I met 60 Wisconsin alumni, with Ikey Karel as toastmaster, and they are about the truest men I've ever met. Any university would be proud of them."

"Let's have every man down at the station when the track team leaves for California in April and that send off will add several points to our score."

James Brader '22, and Irwin Uteritz, Michigan '24, assistant football coaches were introduced by Little at the beginning of his speech. Prolonged applause for each speaker, culminated in three minutes of hand clapping for Little and every man jumped to his feet and gave three skyrockets for the director.

BOWMAN TO TALK HERE TOMORROW

Noted Explorer, American Geographic Head, to Speak at 4:30 O'Clock

Dr. Isaiah Bowman, director of the American Geographical society of New York, will speak on the "Geographical Aspects of International Relations," at 4:30 o'clock tomorrow night in the auditorium of Biology building.

Dr. Bowman is a famous South American explorer and has done wide research work. He was chief of the division of territorial experts in the Peace Commission at Paris. His work at this time determined many of the new boundaries that were fixed after the war.

"The New World" is the title of the book written by Dr. Bowman which is well known. It is one of the best analyses of the changes in Europe as a result of the war that has ever been written.

HARESFOOT OCTOPUS GOES ON SALE TODAY

The Haresfoot number of the Octopus will be on sale today at tables in various buildings on the hill and the usual pharmacies and stores on State street and the square.

EXPECT MANY AT FOSDICK'S SERIES

Conference Committee Plans For Largest Crowd in Its History

Plans have been made to accommodate one of the largest crowds in the history of the convocation which are expected to hear Dr. Harry Emerson Fosdick's four addresses before the annual all-university religious conference, according to George Hanna '25, chairman of the arrangements committee.

Dr. Fosdick will open the series of talks at 7:30 o'clock Friday evening in Lathrop hall when he speaks on "The Need of Religious Leadership." He will speak again at 7:30 o'clock Saturday night in Lathrop hall, and the two Sunday meetings, at 3:30 o'clock and 7:30 o'clock will be held in the men's gymnasium.

"Only students will be admitted to the meetings held in Lathrop hall," Hanna said. "The Sunday meetings will be open to the public."

All speeches except those on the Sunday night program, will be broadcast by the university radio station, which has been granted special permission to broadcast the talks by the KYW station in Chicago.

President Birge will preside and introduce the speaker at the all-university convocation Friday night. The men's glee club will sing and community singing will be led by Prof. E. B. Gordon of the extension division.

This is the first time that the university has been able to secure Dr. Fosdick to address the conference, and Wisconsin is the first university in the Big Ten to have him speak.

VOORHEES TO TALK ON PHI BETA KAPPA WORK

Dr. Oscar M. Voorhees, secretary of the united chapters of Phi Beta Kappa, will speak at 7 o'clock next Tuesday at the University club on the increased activities of the united chapters in recent years. He will tell of the forthcoming celebration of the sesquicentennial anniversary of the founding of the society. Invitations have been sent to members of Phi Beta Kappa in or near Madison. Reservations close March 30.

ST. PAT DECLINES INVITE; ENGINEERS MUST RE-ELECT

In answer to a night letter St. Pat sent the following radiogram direct from Dublin, Ireland, which was received here at a late hour last night.

Most Loyal Sons: My heart rejoices to be called upon once more to lead my loyal sons into the eyes of the world. But as I have been hired by the Irish government to chase the rest of the snakes and English lawyers out of Ireland, I cannot be with you in person on March 28; but in spirit I will be with you always.

With all anticipations for a hot time, I remain

Paternally yours,

ST. PAT.

P. S. Please kiss the blarney stone for me.

In view of the chivalrous obligations of St. Pat to his own country

Origin of Style is Enigma; Students Urge Simplicity

Who, when, where, why, or how style first originated has been ever an enigma which the sages from the time of Methuselah have not been able to dope out. We blame it to Dame Fashion just to appear to surmount the difficulty, but after all, who is she?

Could it be possible that Dame Fashion, when she first laid out her plans for the fashion stage, had foresight enough to see some thousands of years into the future, when her idea would be exploited into a million various styles, shapes, sizes, colors, and materials?

As we look about us today and enjoy the many springy garments set up for our approval, we owe a vote of thanks to this sagacious spirit.

Although we have more or less prescribed laws to follow as each season's whims dictate, yet much is left to the individual taste. What some of the "pet peeves" of a few

of the well known members of the campus are, have been disclosed.

Alice Corl '25, former president of W. S. G. A., says that her pet peeve in the matter of women's dress is her dislike in seeing informal silk dresses such as one would see at a social function being worn on the hill to classes. She likewise prefers school dresses to sport wear, such as sweaters and skirts. On the whole, however, she feels that Wisconsin women dress appropriately for school.

Dress shoes worn on the hill are the pet peeve of Bernadine Chesley '26 the Prom queen. Miss Chesley likes sport clothes of all kinds for school wear.

Sport wear, especially loud knickers and socks, are particularly disliked by Lincoln S. Frazier '26, president of the junior class. He thinks it is all right for Saturday afternoon wear, but not for school. He likes to see the men without hats on the hill.

COST OF MILITARY BALL TO BE LOW

Will Be Cut to Lowest Point Consistent With Conveniences

"We are trying to make the thirteenth annual Military ball, which will be held in the capitol April 3, as low in expense as possible without cutting down the number of conveniences," said Carl W. Damsheuser '25, service officer, and head of the committee on arrangements.

Most of the boxes will be on the same floor on which the dancing takes place. With convenient arrangements all parties will be taken care of with more efficient service than formerly.

Nearly 20 fraternities have made arrangements for boxes so far. The President's guard is attending the ball as a unit and has reserved a box. The Caisson club, Y. M. C. A., the Officers' Reserve corps and other groups are planning to obtain boxes.

Boxes may be obtained from Gilbert E. Roach '26, billeting officer. The price this year is \$10 because of the economical program outlined for the ball.

PATTERSON AND ROOD ASSIST MOZART CLUB

Helen Patterson '26, and Louise Rood assisted in the concert that was given by the Mozart club last night at the First Baptist church.

"Y" QUIET HOUR HELD AT 5 O'CLOCK TODAY

The weekly quiet hour at the Lutheran Memorial church, under the auspices of the Y. M. C. A. and Y. W. C. A., will be held from 5 to 5:30 o'clock this afternoon. The organ solos from "Tannhaeuser" will be played by Prof. A. Berthelsen.

BUILDING ON EXPO WILL START SOON

Booth Construction to Begin After April 1, Says Muehlenbruch

Construction of booths for the university exposition to be held in the gymnasium April 16 to 18 will be started next week and the actual placing of the booths is expected to be under way shortly after April 1, according to Alfred Muehlenbruch '25 who is in charge of the construction department.

In cooperation with other members of the exposition committees the allotting of space in the gymnasium and the annex was made some time ago. Blue print layouts made of each department's space and of the entire floor plan.

Actual construction work will be done by the service department of the university, acting in cooperation with the construction committees. All material has been ordered and it is expected that all details will be completed this week. An effort will be made to have a large number of the booths up before spring vacation in order that the supervisors of the respective exhibits may get their booths in condition for the exposition and not be compelled to stay over during spring vacation to do the work. The exposition will start two days after classes are resumed so that most of the work will have to be done before that time.

Muehlenbruch is being assisted in the construction work by B. B. Sumner '26. Electrical work which will be one of the most important factors of the exposition will be cared for by F. Fairman '25, assisted by H. Dupuis '26.

All arrangements in regard to the booths will be taken care of by Thomas Colbert '25 who will have working with him B. A. Weideman '25, W. Winkeld '26 and M. Wain '26. Records will be kept by B. Reinhart '25 aided by G. Jones '25. All decorations will be under the supervision of F. Buerki '27 who will have as his aids E. Heise '26, L. Matthias '26 and D. Vacheron, grad.

TEAMS ARE READY FOR FIRST GAMES OF TOURNAMENT

Cagers From 16 Schools Will Play Important Tilts Today

Eager for their first games in the championship series, 16 high school basketball teams await their call in the tenth annual high school basketball tournament today. Throughout the state, high school students are waiting for the results while their athletes, some future wearers of the Cardinal, battle on the varsity court of the men's gymnasium.

Tight games are scheduled for

GAMES TODAY.	
11 o'clock—Appleton vs. New Glarus.	
12 o'clock—Beloit vs. River Falls.	
2 o'clock—Bloomer vs. Shawano.	
3 o'clock—Eau Claire vs. Superior.	
4 o'clock—La Crosse vs. Tomahawk.	
7 o'clock—Manitowoc vs. Watertown.	
8 o'clock—Montfort vs. Waukesha.	
9 o'clock—Neenah vs. Wisconsin Rapids.	

today bringing all the teams in action. The first games are all im-

Continued on page 3.

ALUMNI FIGHT FOR UNIVERSITY FUNDS

Organize State-wide Campaign Under Leadership of Haight

Wisconsin alumni, aroused to the present emergency of the university, are organizing meetings all over the state in order to express their sentiments in favor of an adequate appropriation for the coming biennium. The widespread publicity given by the articles of Theodore Kronshage, president of the regents of the university, has helped to a great extent to acquaint the people of the state with the needs of the university and its accomplishments.

In order to supply speakers for these meetings, the Alumni association under the direction of George I. Haight, president, has organized a special speakers' bureau, in charge of John Dawson '24. Most of these speakers are prominent alumni who have volunteered their services, and who go to the meetings well equipped with charts and other data. The entire movement is being sponsored and carried on by alumni.

This far, 13 alumni meetings have been held and 12 more are definitely planned. The meetings already held, and the speakers for them, are as follows:

Appleton, Feb. 18, Dean G. C. Sillery; Beloit, Feb. 4, Prof. Steven Gilman; La Crosse, Feb. 7, Prof. Max Mason; Watertown, Feb. 7, Prof. T. L. Jones; Marshfield, Feb. 10, Prof. T. L. Jones; Sparta, Feb. 18, Prof. A. W. Hopkins; Racine, Feb. 18, Prof. J. F. A. Pyre; Marshfield, March 10, T. W. Brazeau of Wisconsin Rapids; Manitowoc, March 10, M. H. Strehlow of Green Bay; River Falls, March 19, Judge Oscar Hallam of St. Paul; Platteville, March 20, W. N. Smith; Elkhorn, March 23, Prof. W. Kiekhof; Baraboo, March 23, Prof. Max Mason.

The meetings that are yet to be held are Kenosha, March 25, Prof. J. F. A. Pyre; Wausau, March 28, Theodore Kronshage and James Phillips; Antigo, March 30, Prof. A. W. Hopkins; Sheboygan, April 3, ex-Governor Frank McGovern; Stoughton, March 25, Dean G. C. Sillery; Janesville, April 16; Superior, April 16, Professor Pyre; Oshkosh, March 27, Marinette, March 31, Prof. Lloyd Larson; Medford, March 26, local alumni; and Sturgeon Bay, April 2.

Daily Reports of Badger Teams

CARDINAL SPORTS Athletics in the Collegiate World

CALIFORNIA TRACKMEN STRONG; WISCONSIN TO TRAIN FOR DISTANCE

Bergstresser, Kubly and Flueck May Be Out of Western Trip

Reports from the land of oranges indicate that the California tracksters are one of the strongest all around track aggregations in the country with their especial strength in the weight events and their weakness, if they have any, in the distance runs and high jump.

With these facts in mind Coach Jones is placing especial stress on the development of his milers and two milers. Captain Vallely, Piper, Perry, Schutt, Petaja, Cassidy and Link especially are being watched.

Vallely in Mile

It is almost a certainty that Vallely will be shifted from his customary race in the half mile to the mile to bolster up the Badger potentialities in this event. Coach Jones expects the Badgers to take at least two places in each of the two longer runs. Vallely has always shown more ability as a miler as was evidenced by his record breaking feat in the mile at Iowa and his placing at the Big Ten indoor meet.

Petaja, Cassidy and Schutt, the other mile possibilities are all in good form and are working hard to be one of the five distance men to take the western jaunt. Schutt, a member of the championship hill and dale squad, is developing fast and may make one of the milers. Bergstresser, one of the best milers on the squad is suffering from a heel injury and may not round into shape but in case he does he will probably be used in the 880 as he travels distance well under two minutes.

Kubly Out

The two mile squad received a severe set back today when Ray Kubly, one of the best sophomores two milers ever to run for Wisconsin, was taken ill with the mumps which means that he will probably be unable to accompany his team mates to California. His services will be sadly missed because it is in the two mile that Coach Jones planned to garner the greatest number of points but Kubly's absence will cut the strength of the Badgers in this event by at least 50 per cent.

Another upset today was the appearance of Herb Flueck with his throat bandaged suffering from an attack of tonsillitis. Just how serious this will be is not known but it is hoped that the premier 440 man will be able to make the trip.

WALES DRILL TEAM TO OPEN STYLE SHOW

Tonight at 7:30 o'clock the Prince of Wales drill team will officially open the Spring Style show by giving its exhibition drill in front of the Orpheum theater. In the parade at 6:30 o'clock the team will escort Mayor I. Milo Kittleson. The drill team is composed entirely of women. Charlotte Logeman '26 is the captain. The members are: Charlotte Churchill '27, Eugenia McQuatters '27, Catherine Clausen '28, Alice Lyons '26, Helen Mueller '27,

FROSH TRACK MEN REPORT AT RANDALL

With the end of the indoor track season last Saturday all freshman track candidates will report to Coach Mead Burke today at Camp Randall to start the outdoor season and to be assigned to their lockers.

MAT AND GLOVE MEET SATURDAY

Combined Event Will Be Held on Basketball Floor at 2:30 O'Clock

What promises to be one of the most interesting athletic events in the university is the combined all-university boxing and wrestling tournament which will be held on the varsity basketball floor next Saturday afternoon. The big boxing and grappling meet is scheduled to begin at 2:30 o'clock.

In the boxing tower the boxers are keying themselves to perfecting by carefully bringing into play the advice given them by Coach Ray Moore. On the same floor only about one hundred feet away Coach Hitchcock's mat men are employing head locks, toe holds, half-Nelson and all the science of the mat in the eliminations for the final wind-up next Saturday afternoon.

Arrangements for the combined all-university boxing and wrestling tournament have been completed. Women are especially invited to come and watch the boxers and wrestlers perform in the annual gathering of ring athletes.

The fact that the state high school basketball tournament comes on the same day assures a record crowd, and this, with the announcement that the admission price has been reduced one half to 25 cents, should fill the stands.

Frosh Commission to Be Announced at Annual Banquet

The names of the freshman women who have been elected to freshman commission will be announced at the annual Y. W. C. A. supper that is to be given at 6 o'clock tonight at Wesley Foundation hall. In order to make the affair informal, attendance will be limited to those members who have been active in some branch of Y. W. C. A. work this year, and the program will be limited to group singing and a few short talks by representative workers in the organization, according to Jean Palica '25, social chairman of cabinet, who is in charge.

Elizabeth Stolte '26, president of Y. W. C. A., will preside and Rena Grubb '26, who is in charge of freshman work, will introduce the new commission. The recently elected officers will also be present.

Miriam Wollaeger '27, Ellen Dryden '28 and Dorothy Potter '27.

TENNIS SEASON FINDS COURTS INADEQUATE, SAYS PETITION

When spring comes, can tennis be far behind?

The first refrain by your red-breasted friends from the South is sure to inspire in some of our red-blooded students the irresistible desire to scamper over the white-lined tennis courts again. The hibernated racquets are unearthed, dusted off, and lodge for two weeks or so with the re-stringing dealer who promised the 24-hour service.

But where to play?

There are only 24 hours to satisfy the demand of 7,600 students, who are at the age when tennis playing is most popular. And when the women's spring sport season begins, seven of these courts will be used for class purposes during the entire day.

Forty students, realizing the gravity of the situation, have signed their names to a petition asking the university authorities to consider the project of providing a few more tennis courts for students. The petition contends that since tennis has increased so much in popularity, that as the number of students has mounted, and because some of the courts were destroyed when the Wisconsin General hospital was built, several new

tennis courts are greatly to be desired.

Plans are now being made to construct nine new courts at Camp Randall this spring, according to Thomas E. Jones, professor of physical education, but even then the number will be inadequate.

"We should have 40 or 50 tennis courts around the campus," said Mr. Jones. "There should be 20 more new ones if we are to have adequate tennis facilities. Several of the former courts were dug up for building sites without arranging for new ones to take their place.

"Tennis is a form of recreation we want to promote. There is plenty of room around the campus for additional courts, but the expense of preparing the ground and constructing the courts hinders the undertaking from being accomplished."

FROSH BASEBALL MEN REPORT TO UTERITZ

Frosh baseball candidates are asked to report to Coach Uteritz in the gymnasium annex any afternoon of this week after 2 o'clock. Pitchers and catchers are needed especially.

Swimming Banquet Will Be Held Next Wednesday Evening

The date of the annual swimming banquet, which has been shifted several times in the past few days, has been definitely set for one week from this evening at the Loraine hotel. It will be attended by all men who have swimming or water basketball awards coming, two managers, the coaches, George Little, J. F. A. Pyre, and Byron Barwig.

Coach Joe Steinbauer will speak, and there will be short talks from swimming captain Simpkins, and water basketball captain Joe Feuchtwanger. It is probable that Little and the other guests of honor will also speak.

At this banquet the men recommended for awards will be O. K'd by the Athletic council. New captains for next year's teams in both of these sports will be elected at this time.

Tomorrow afternoon there will be a meeting of all freshmen swimmers in the gymnasium at 4:30 o'clock. The yearling captain for the remainder of the season will be elected at this time.

ROCHESTER, N. Y. — Frank G. Patchin, editor and author of more than 200 books for juveniles, died in Jacksonville, Fla., according to word here.

IT'S THE CUT OF YOUR CLOTHES THAT COUNTS



Suits That Are a Part of Spring Itself

This Spring shows a decided change in the easy fitting styles. The broad shoulders are there, the loose effect, the straight, wide trousers. But these new coats are snuggler at the hips, their effect is more athletic. The Hub suits are cut in just the right manner, the new

models for spring are the most striking style, the most appropriate for the vigorous young college man, that we have ever seen. We have this suit in the best looking and most masculine version—Society Brand. There's a wonderful array of light colors to choose from. The prices are moderate.

THE HUB

F. J. SCHMITZ & SONS CO.

"On the Treatre Side of the Square"

LET US TAILOR IT!

Your
Easter
Suit



Your
Easter
Suit

SUITS \$35 AND UP

O. C. OLSON

For 32 years, most reasonable priced suits in city.
228 State St.

Daily Reports of Badger Teams

CARDINAL SPORTS Athletics in the Collegiate World

State Caging Title Seekers Battle In Tenth Annual Tournament Today

Madison High Schools Furnish
Music; Young Referees
Games

Continued from page 1.

portant in deciding the final victor and the high school athletes will fight hard. Winners will have advanced one step towards the coveted championship; the losers continue playing in the consolation series.

Backed by the enthusiastic support of the "W" men, officials of the 1925 tournament hope that the event will be a success and have tried hard to give the high school men a pleasing reception.

"We want the students to turn out and cheer at the games and let the players know they have some supporters here in order that they may play all the harder," said "Doc" Spooner '25, chairman.

Breakfast for Coaches

A breakfast at the University club for all the coaches is the first event on today's program. At this breakfast the mentors of the teams will discuss minor points and rules of the tourney and will become acquainted with each other.

Appleton and New Glarus take the court for the opening game at 11 o'clock this forenoon and one of the hardest fought battles of the meet can be expected as both teams have been successful in their pre-tournament games.

Games Are Hourly

After the first tilt, the games will be held hourly except for an intermission of one hour between 1 and 2 o'clock and 6 and 7 o'clock. Today will be the busiest of the four days of the meet.

Wisconsin high band, Madison Central and East high bands combined are furnishing the music between periods of the games.

Young to Referee

Fred Young, veteran Big Ten referee, and official of last year's event, will again officiate at the games assisted by George Levis, freshman basketball coach.

Tickets are still on sale for the tournament at the old clinic building. Series tickets at \$2 each or period tickets admitting the holder to either a forenoon, afternoon session, or evening at 50 cents each may be purchased.

Many New Teams

Among the list of tournament teams this year are included many new teams that were not at the 1924 contest. Fond du Lac, champion last year, lost to Neenah in the final round of its sectional meet. Wauwatosa, victor in the consolation series last year, was beaten by the strong Waukesha quintet.

Wisconsin Rapids, River Falls, Superior Central, La Crosse, Watertown, Manitowoc and Appleton are hoping to achieve what they failed to do last year.

ADVERTISE IN THE CARDINAL

Intramural News

Interfraternity Wrestling
Announcement was made yesterday by Coach Hitchcock that all men would be eligible for the interfraternity wrestling with the single exception of the varsity squad. This means that the various freshmen wrestlers may enter the competition under their fraternity colors.

The list of men who would not be allowed to compete under the intramural rules are Hanson, Meusen, Elmer, Minkow, Haas, Bundy, Phelps, Whitworth, Holmes, Wheeler, O'Laughlin, Zottner, Chada, Splees, Etipek, Plettner, Bieherstein, and Muegge. All others may enter.

Interfraternity Baseball Meeting
Representatives of fraternities are to meet at 1 o'clock Friday to make arrangements for the opening of the baseball season.

Up to Us

An Editorial

This morning and for the following three days the university will be host to 16 division teams here for the annual interscholastic basketball tournament. Many of these men and their followers are going to get their first glimpse of Wisconsin on this trip. Their visit should be made most enjoyable.

Here is an opportunity for Wisconsin students to make future Wisconsin men and women feel at home. You can do much individually to make that welcome a real one.

Support the tourney from beginning to end in all its activities.

KAY IVERSON SKATES IN RINK AT NEW YORK

Coach Kay Iverson and his brother, Emil Iverson, hockey coach at Minnesota, left last night for New York, where they will do fancy skating on an indoor rink.

150,000 HARDING STAMPS SOLD TO COLLECTORS

WASHINGTON — Sales of the new Harding 1½ cent postage stamp and the new 1½ cent stamped envelope on March 19, the first day of their offering at the post department's philatelic agency, amounted to \$2,446, representing 150,000 pieces. The sales were to stamp collectors who bought in blocks of six, twelve and even 100.

Either lace hosiery or the hosiery with the flashy embroidered tops for this season.

Varsity Hurlers Improve in Form

Pitching and Infield Work Get
Attention of Team in
Long Practice

A long practice session was the program of the varsity baseball team yesterday. Pitching and working with the infielders took up the time.

Clausen and Edwards, two southpaws, hurled in the daily scrimmage. Clausen appeared in top season form, having several strikeouts to his credit. He also found the plate with ease, and right now is performing well. Edwards pitched steadily, and his control is much improved since early season.

Larson at First

Following the scrimmage, Coach Lowman spent his time drilling Larson at first base. This man is a heavy hitter, and being over six feet tall should make a good first baseman.

At the present time Coach Lowman is handicapped by not having a slugging first sacker. Steen and Feuchtwanger, the other candidates for the first base position, are both good fielders, but lack batting ability.

Frosh Report

Yesterday afternoon marked the first appearance of the freshman ball players. A call was issued by Coach Lowman for battery candidates, and eight men, four pitchers and four catchers reported for work. All these men are unknown, and it will be several weeks before anything can be learned about their ability.

FAST MATCHES HELD IN MAT ELIMINATION

Ten fast matches in the eliminations for the wrestling meet Saturday afternoon were held Monday and several yesterday. Cohen, 115-pound class; Randecker and Chi, 125-pounds; Cramer, Halverson and Sherbert, 135-pound class; Weismuller, Meyer and Saari, 145-pound class; and Kelley, Derleth, 158-pound class were the victors in the first meets. Freshman and non-"W" men are eligible to compete in the eliminations. Matches will continue this week and all divisions are complete for the meet Saturday.

WASHINGTON—Mrs. Annie Norton Batelle of Columbus, O., associated member of the national Republican committee, died Monday.

SENIOR BASEBALL SQUAD VICTORIOUS OVER SOPHOMORES

In the most hotly contested game of the indoor season the senior women indoor nine leveled the sophomore baseball championship contenders and marched off with a 32-31 victory last night in Lathrop gymnasium. After leading the seniors by 16 scores up to the fourth inning, the sophomore outfit suffered its first break in the game, and the seniors tied the score.

The undefeated sophomore team started the first inning with a rush running up a lead of seven scores. Time after time the ball slipped past the senior infield and let a sophomore runner in for a score. Patterson was pitching a hard fast game for the sophomores.

With a lead of 16 scores in the fourth inning, the sophomore team confident of victory began to slip; then came the final break in the game. The senior infield tightened up on the defense and started running up the 16 scores which necessitated an overtime game. The fifth inning was scoreless neither team succeeding in getting their runners past third.

Rosenberg's two-base hit in the sixth inning let in the runner which gave the seniors their winning score. The first game in which the seniors have participated this year ended with a 32-31 victory in their favor Thursday at 4:40 the seniors meet the freshmen in Lathrop gym.

The championship game in basketball will be played tonight in Lathrop gymnasium when the seniors meet their old rivals, the junior sextet. Neither team has been defeated in the inter-class series. The game is open to the public.

Coolidge is so quiet we are thinking about inviting him to go fishing with us.

GOLFERS' DRIVING CONTEST PLANNED FOR FRATERNITIES

Competition Will Be Held
at Night in the
Annex

Eight fraternities were represented in the first meeting of the golf driving enthusiasts held yesterday. Another meeting will be held at 12:45 o'clock Thursday in the intramural office to complete the arrangements.

Compete Nights

The competition will be held nights in the annex and will consist of driving the ball into slots on a target at the far end of the building. Each slot will have a different value on the scoring sheet, the middle slot to correspond to the bull's eye.

Fraternities are to enter teams of six men in the sport. Only the count of the leading three, however, will count in the final comparison of scores. A fee of \$4 is being charged, this amount to be paid at the meeting Thursday. Trophies will go to the winning team.

Fraternities Entered

Fraternities now entered, and their representatives are Phi Sigma Delta, Arthur Baer '27; Phi Sigma Kappa, Kenneth C. Baughman '28; Kappa Sigma, Raymond Schmidt '27; Zeta Beta Tau, Allan Polachek '28; Delta Tau Delta, William Stegeman, '25; Beta Theta Pi, Adolph Bock '25; Delta Sigma Phi, Martin Juhl '26; and Phi Delta Theta, Moss Yater '25.

The dainty lace edged handkerchief or the bright colored linen with contrasting border completes the gown.

"Our sales tickets are worth 10% in trade"

STUDENT SUPPLIES

Fair prices and friendly service are yours when you trade at BROWN BOOK SHOP.

Price-book fillers: No. 1 bond paper, 100 sheets, narrow or wider rulings; 7½x5, 22c; 8½x5½, 25c; 9½x6, 35c; 8½x11, 50c; 30 sheets 8x10½, 2 ring, 3 for 25c.

Reinforcing rings, box of 100. 8c; 2 for 15c.

Erasers, W. Roberts brand; the biggest values in town.

"Jumbo Ruby," 3 in. long, 5c. Artgum, large size 5c

Gluey Paste, 6 inch tube----10c

Index cards, 3x5--

Per 100 ruled ----15c

Plain ----12c

4x6 in. ditto ----22c

Waterman's F. P. ink----10c

Lead refills, 1 doz. in tin----10c

"Parchment" bond, 8½x11,

typing paper, 20 lb., per

ream of 500 sheets ----\$1.00

16 lb. bond typing paper,

per ream ----65c

Engineers' Supplies: Draw-

ing Sets, T Squares, Curves,

Slide Rules, Scales and Ink.

BROWN BOOK SHOP

623 State St.

Shop on State Street

See Our Windows Tonight

"Where You See the Styles of Youth"

PARSON'S

Shop of Original Models

121 State Street

Announcing their complete readiness for spring and inviting you to attend their authentic Fashion Revue of spring styles, shown on living models, in their window, between the hours of eight and ten Wednesday night, March 25th; also to view the many other entertaining features of the Spring Opening.

Open house Thursday night from 7:30 to 9:30. Music will be furnished by a special selected University orchestra.

Two State Street bands to entertain you Wednesday night.

Quality and Fair Prices Have Made a Pathway to Our Door

Where You See the Styles of Youth

Let Us Store Your Furs



You can buy anything you want, whenever you want it—but Life Insurance. If feeling good TODAY be examined. TOMORROW you may not be so good.

"Art" Lowe
UNIVERSITY AGENT

Northwestern Mutual Life
Phone B.885
402 Corn. Nat. Bank Bldg.

The Daily Cardinal

FOUNDED APRIL 4, 1892

University of Wisconsin official daily newspaper, owned and controlled by the student body. Published every morning except Monday during the academic year by The Daily Cardinal Company, incorporated, at the Union Building, 752 Langdon Street, and at The Capital Times Building, 106 King Street, Madison, Wisconsin. Printed by The Capital Times Company. Member of the Western Conference Editorial Association.

Entered as second-class mail matter at the post office at Madison, Wisconsin.

Editorial Office—Union Building, Phone B. 250, before 6 p. m. Capital Times, Phone B. 1137 after 7 p. m. Business Office—Union Building, Phone B. 6606 before 5 p. m.

Subscription Rates—\$3 a year by carrier, \$3.50 a year by mail; \$1.75 a semester by carrier, \$2 a semester by mail. Single copies, 5 cents.

BOARD OF CONTROL

PRESIDENT, JOHN L. BERGSTRESSER; Vice-president, Theodore E. Camlin; Jane Pierson, Secretary; James R. Hemingway, Treasurer; Member, Sidney E. Thorson.

EDITORIAL STAFF

MANAGING EDITOR WES. W. DUNLAP
Associate Editors.....Eliot H. Sharp, Elmer L. Barringer
Women's Editor Helen J. Baldauf
Sporting Editor Kenneth B. Butler
Desk Editors—Vilas Boyle, Kenneth Cook, Lloyd Gladfelter, Hillier Kriehbaum, Max Nimman, Louis Sossand, Payson Wild.

Skyrocket Editor John E. Davis
Editorial Writer Lowell Frautschi
Assistant Women's Editor Irene Norman
Society Editor Helen A. Taylor
Rotogravure Editor Alice Colony
Desk Assistants—Vernon Carrier, Elmer Freytag, Bernard Goodkind, Joseph Mason, James Nelson, Robert Paddock.

Sport Assistants—George Dennis, Stanley Kalish, Herbert Powell, Clarence Schlayer.

Engineering Reporter Erwin Summers
Special Writers—Alice Drews, Esther Hawley, Edith Miller, Marcelles Rutherford, Kathryn Shattuck, Ruth Stevens, Rosemary Stone.

Reporters—Florence Allen, Mary Brandel, Hope Dahle, John Gillin, Katherine Hartman, Annette Hirschfeld, Ruth Krause, Rose Mantell, Muriel Markham, Edna Miller, Dorothy Potter, Winifred Wise, Louise Zimmerman.

BUSINESS STAFF

BUSINESS MANAGER ROBERT D. CASTERLINE
Associate Business Manager Earl E. Wheeler
Advertising Manager Luther E. Brooks
Associate Advtg. Mgr.—Norbert Eschmeyer, Harry M. Schuck.

Circulation Manager Irving W. York
Associate Circulation Manager Charles E. Kading
Assistant Circulation Manager Calvin Koehring
Assistant Office Secretary Lois B. Bacon
Foreign Advertising Mgr. Lester F. Malzahn
Merchandise Service Manager Antoinette Schwelk
Assistant Merchandising Service Manager Carol Bibb
Promotion Assistant Salome F. Fischer

Business Assistants—Ulla Rothermel, Grace Morley, Elizabeth Stone, Howard Jirtle, Lester A. Senty, Othmar Weber, Elaine Murphy, Gladys Bayer, Edw. Lowenthal, James Clark, John Weisz.

DESK EDITOR—HILLIER KRIEGHBAUM

THE FLOWERS THAT BLOOM IN THE SPRING

Tra-la, have everything to do with this case. Not the real flowers, of course, although they have their own fashions too. But their fashions are established, and have been for ages. Burbank is practically the only human being who can alter their fashions.

It is the changing fashions that have to do with this case, the fashions of human flowers, the dears. And now every day you see them blooming forth in something new, brilliant or subdued, but always entrancing. They make the campus merry with new life and our hearts light with new fancy.

Man, mere man, disliking to be outdone by his sisters, tries to keep up a pace of his own. He succeeds fairly well, and each spring sprouts out himself in something different, slight variations of old creations.

Spring might be called a new year—for it is a new year in fashions.

THE SUMMUM BONUM

These two words, which every student of an earlier generation would have known to mean "the highest good," formed the grounds of great dispute among the ancients. Every school of philosophy believed it had discovered the summum bonum and laid down rules of conduct and of thinking to attain it. Socrates, the first and the wisest, said, "Know thyself." Plato, in effect, said to seek wisdom. The cynic and skeptic schools said complete self-sufficiency and indifference to people and things about us was the highest attainment. The stoics agreed with this in theory, but, in practice, they said, "Virtue is the summum bonum." Then came He who said "Thou shalt love the Lord thy God with all thy heart, and with all thy soul, and with all thy might. This is the first and greatest commandment. And the second is like unto it. Thou shalt love thy neighbor as thyself."

And so all through history, men who have thought at all have sought some great good. In passing, let us say that it is sometimes our suspicion that those who have not thought at all have, unconsciously, attained the elusive goal of the thinkers. But why have we so unceasingly sought this great good? For itself? Doubtful! Is it not that we are all seeking for happiness, and that man has sought the summum bonum only as a means of attaining happiness? And happiness for whom? For all men—yes, sometimes. But for all men because it would gratify and make

happy the particular man to know that he had found the means of making all men happy. This was not the aim of Him who said, "Love thy neighbor," but generally it may seem to have been the aim of those who have followed and preached in His name.

This reasoning is perhaps very shallow, but does it not often seem that, take any deed in life, any deed in history, and go deeply enough into it, you may find a personal motive even in seeming self sacrifice? Perhaps this is true, right and natural, and only our hypocrisy makes us endeavor to cover up the fact. Perhaps we should advocate everything which we do advocate on a frankly egocentric basis, and it would probably not slow up the so-called progress of the world to any great extent, after all, because whether we like it or not, complete personal isolation is as impossible today as is complete national isolation.

IDEALS AND MATERIALISM

Sometimes it is charged of college students that they live too much in unrealities. Those in the active walks of life say that while in college we shut ourselves off too closely from the world in which supposedly we are preparing ourselves to live, that we form a little world of our own, and that when we are graduated we often find ourselves lost, unable to cope with the actualities of life.

What is to be said to these things, granting the charges are true? At least one thing is certain; without wanting it to appear that we are patting ourselves on the back, it is fortunate for the world in general, that there is a class, in this country as well as in other lands, that is temporarily getting away from the sordid things of life, that is for a time living up in the clouds. And we should be proud to be members of that class. It is a golden opportunity.

We do not believe that this is flattering ourselves for we are honestly of the opinion that progress to the finer things in this world must come mainly through those who have at some time or other tasted the fruits of beauty and idealism, who through those things are the better able to appreciate the materialistic world in which we now live, or in which we as these college students are soon to live.

Surely the man who can enjoy poetry or works of art or beautiful things in nature is a constant sense of pleasure unto himself. It is of course true that college does not alone or necessarily do these things for a man, but the college man or the man with the equivalent of a college training is usually more fitted for such things, and is more numerous in this group than those without such training.

On the other hand we believe that along with the idealistic conception that some stress so much, the college student does get some very strong and useful contacts with life while in school. What can our critics say of those who work their way through school? What can they say of those who are working actively on student work which at least gives them some idea of the things they will later do in the business world? Surely the average college student does not go out into the world entirely unprepared for the things he will face there.

Wisconsin Should Know

Coincident with the development of the Union program, another—that for men's dormitories—has been coming to a head. Early last fall President Birge appointed a faculty committee on undergraduate social needs with Prof. Max Mason as chairman. Its first principal business, prompted by the long interest of the regents in dormitories for men, and the immediate pressing need for them, has been to study minutely and first hand the dormitories of the principal universities of the country, to analyze Wisconsin's needs, and to make recommendations to the regents. On January 21 the regents approved the architect's sketches based on the committee's recommendations, sketches which show a series of quadrangles, each housing 230 men and made up of smaller units, eight in number, which will serve as individual homes for 30 men. Each of these small units is separated from the next by only a side wall, so that all the men are actually under the same roof. The architects have achieved a varied and interesting type of building in which there will be color and relief, and with their unparalleled lake shore site, on the shore drive behind Agricultural hall, the completed quads should be among the most beautiful in America. The building of two quads, to cost \$900,000, was authorized by the regents when they approved the sketches. The money is to be raised, not by the state, but by the university itself. The last legislature by statute provided that the dormitories could be built and owned by the university with funds raised from the sale of bonds to a non-profit corporation, which bonds are to be redeemed through income from the dormitories and through profits from revolving funds. More dormitories will be built as the money is secured. A program for the future has been marked out, and, in its general outlines, can be safely followed.

ALUMNI HANDBOOK.



EXTRA BULLETIN

Fourth Year He-Men Masticate!!!

To the rhythmic strains of Ellis "Jiles" Fulton's chewing gum, the senior males' tea-party was run off with but few fatalities last night. After Little Geo.'s stern instructions to the press on how to handle the situation, Methuselah got out with the scoop that will make all future freshman classes green—with envy.

Dollard and Dawson putting in appearance at the last minute, threatened to break up the party, as Fed Nowles feared a collection would be taken for the Memorial onion, and spread the alarm. The crisis was past, however, with no greater tragedy than the total absence of the Haresfoot orchestra, and of Solbush and Goodlad, which last was no tragedy.

Bergstresser led off with classic extracts from the Cardinal files of other years, again putting Skyrockets in the lead as banquet material. Jimmy Brader smoked his pipe to drown out the odor of moth balls on the reminiscences.

Now about this Mr. Little. He wants us to be red-blooded he-men, eschew dates, and get out of the canoes by Christmas. But say, we can't walk on water, can we?

Diebold claimed Little was to be clean-up man, but the erstwhile waitresses, unwilling to take any chances, made away with the dishes before the speeches got under way. Nevertheless, it is expected that the Sigma Nuze will be displaying new supplies of silver and napery for the rest of the year.

D'Artagnan claims that he knows a fellow who says that he did not descend from monkeys because his ancestors came from Wales.

A complete sentence in five letters A B C D I.

A complete sentence in seven letters "Ten days."

OUR OWN FASHION SECTION

You know, I do have the darndest luck. Here I am with a beautiful Pi Phi trying to get me to drag her to an informal, and we with a date with a DG! I felt so angry I could just cry, but consoled myself by going down to Peff's establishment and looking at some perfectly gorgeous neckties. One of them, tan with pink polkadots, really caught my eye and I was going to have one of the brainiest and hand-somest men of the university pose for it for the Deet, but I was especially busy and did not have time to get my picture taken. A suit and shirt, and possibly shoes, should be worn with the tie.

HOW LITTLE IS FAME! CLIVUFF OF THE MIGHTY HARESFOOT RECENTLY RECEIVED A LETTER ADDRESSED TO THE "BEARSFOOT CLUB."

Bulletin Board

This column is for the use of all organizations and university staff members who wish to reach large groups readily. No charge is made for notices. Notices may be brought to the editorial office in the Union building, 752 Langdon street, or phoned to Badger 250 before 5 o'clock of the day preceding publication.

SPANISH CLUB

There will be a meeting of the Spanish club, at 7 o'clock, Thursday night, in Engineering building.

JUNIOR MATHEMATICS

Prof. H. L. Miller of Wisconsin high school will talk to the Junior Mathematics club at 7 o'clock on Thursday night in 101 North hall.

ARTS AND CRAFTS CLUB

A talk will be given at 7:15 o'clock tonight by Mr. Stebbins on his trip through Europe. All those interested may attend this meeting.

WOMAN'S COMMERCE CLUB

There will be a meeting of the Woman's Commerce club at 7:15

The Haresfoot Octy comes out today. As we had something printed in it, we will refrain from making wise cracks about it. This is an advertisement. Any other periodicals can purchase immunity on like grounds.

"What a shape," said Hamlet as he saw his father's ghost.

My last roommate was so dumb he thought the weather bureau was part of a bedroom suite.

D'ARTAGNAN.

The Society of Homely Men expects to attend a performance of "Rain" in a body. They will view it with an unbiased mind, but expect to find it rather wet.

VACUUM

Her hair is fair as fair can be; Dried grass is known as hay— Oh for the like of a lipidwee! Let the woman pay! A hurtling bolt in the summer sky— The wild bark of an owl. Oh watch the pretty ships go by! A chicken is a fowl.

L'Envoi

Say, can you lend me a tenspot, Paul? I gotta go to the Milit Ball.

Many fellows send home (?) scented letters. Ours are never scented. In fact, they are usually never even sent.

Spring is coming! An athletic shop on State street has taken down the sign "Skates Sharpened Here" and put up the one "Tennis Rackets Restrung."

That sign on the Hotel Loraine is certainly a wonder. Viewed from a place a trifle south of the Parkway it reads

H

LO

Could one say that it was a welcome sign? (Pun)

No, no, no! Don't get excited! Hold your seats! U. W. Expo means University of Wisconsin exposition and not an expose of the university.

The noble D'Art insists that it is dangerous to practice on a saxophone, you might learn to play it. We inform the waiting world that there is no danger as far as Methuselah is concerned.

We see that the Milit ball has appointed an intelligence officer. Now if they could only get an intelligent officer, everything would be rosy.

Hush, little student, don't you fear; Spring recess will soon be here.

We must have one he and she joke in the column:

He: If I only dared I would.

She: What?

He: Ditch my date with you tonight and go out with Marion.

Strike!

ARGON THE LAZY.

o'clock tonight in the S. G. A. library.

EUTHENICS CLUB

The Euthenics club will hold its meeting Thursday night in Lathrop hall. Business meeting is at 7 o'clock and the open meeting, with special program, follows at 7:30 o'clock.

FROSH COMMISSION

There will be a meeting of the Freshman Commission at 6 o'clock Thursday night in the authors room of the Y. M. C. A.

ALPHA KAPPA DELTA

Due to the week end religious conference on the campus, the regular meeting of the Alpha Kappa Delta which was scheduled for next Friday evening has been postponed until Friday evening of next week.

OUTING CLUB

The members of Outing club will hold their regular business meeting at 7:30 o'clock tomorrow evening on the fifth floor of Lathrop hall. Program for spring sports will be completed, and the plans for the breakfast hike that is to be given Sunday morning will be discussed. New members will be admitted, and the women who have earned their points will be awarded pins.

"Clocks" Are Chic Feature In Smart Hose

The decree of fashion must be followed in the matter of women's hosiery just as much as in any other bit of feminine wearing apparel. Shabby hose or hose which are old fashioned will spoil the entire effect of milady's elaborate spring costume.

To be strictly chic a woman must wear the very latest of spring hosiery, but even so she has a wide variety of choice. Light shades, especially of tan, will still be worn very much, having not yet lost the high position in the light of a woman's mind which they have so nobly built up for themselves during the past months.

Chiffon hosiery will be the very height of style, and they will be decorated at the ankles with small clocks of pale shades. By the means of this color scheme the clocks will not be formed in straight outline but will give a rather shadowy effect.

Sport hose will be worn in combinations of blue and tan, yellow and white, and many other colors of the prism. A novelty half-hose with a bright colored band at the top will be the delight of many a woman's heart, and will thus find a sure and safe position at the top of the fashion ladder.



Wales Coat



RATES
1½ cents per word
35c column inch
25c extra on chg.
acc'ts.
Minimum 25c Con-
tract rates.

Classified Advertising
IN THE CARDINAL
Reaches Every Student

PHONE B. 6606
Ads must be at
Cardinal office, 752
Langdon St., by 5
o'clock of preced-
ing day.

LOST AND FOUND

LOST: Phi Beta Delta Pin. Call
F. 4208. Reward. 2x23

FOUND: Girl's wrist watch on
State street. Call F. 200 2x25

WANTED

EXPERIENCED TUTORING in
French and Spanish. F. 184.
semix27

TYPING: Manuscripts and theses.
F. 4650. 8x25

WASHING WANTED: Curtains

The two part gown in the wool
or silk georgette is very smart this
season.

and blankets especially. All
home work. Guaranteed. F. 4390.
WASHING AND IRONING neatly
done. Called for and delivered.
Prices reasonable. B. 509. 1xmo

FOR SALE—A new Lyon
and Healy C. Melady Saxo-
phone with a genuine leather
case, for less than half of
cost. Call Connel, B. 1712.

Either the straight or crooked
handle this year for my lady's par-
asol is fashionable.

EASTER

EASTER

\$23.50 Suit or Topcoat \$23.50
MADE TO YOUR MEASURE

Many of New, Lighter Shades
ORDER NOW FOR EASTER

We match pants to your coat or vest. Mail or bring vest as sample.

THE REX TAILORS

F. 4219
EASTER

306 State St.
EASTER

WOMEN'S NECKWEAR

MUST BE EXTREME

There is no middle course this
spring in women's neckwear. Either
it must be frilly and feminine or
strictly mannish and tailored. But
a cravat you must wear if you
would be stylish. Neckwear may be
fashioned of lace, silk or crepe. If
it is wide and sheer, it is tied in a
bow with flowing ends; if smaller,
it is worn knotted close about the
throat. For the mannish shirt, one
wears a small bow tie that is em-
phatically severe.

TO LOOK YOUR

BEST

for

Military Ball

Buy Your

Toiletries

at the

Lewis Pharmacy

Across from Co-op

Colorful Perfumers



Rider's Master Pen
is the ultimate in writing
efficiency! It holds eight
times as much ink as the
ordinary pen, writes at
touch, and has a smooth,
friendly feel in the fin-
gers. Compare it with
any ordinary pen. Its
value is convincing.



Located With McKillop Art Co.
650 State St.

Well Dressed Students Buy at the Co-op



There need never be a question of style if you buy your
new Spring suit and top coat here. We are in constant
touch with eastern markets. We know what college
men are wearing and will wear. As for quality of fab-
rics and excellence of tailoring, we give you our guaran-
tee that you'll get full value.

Suits and top coats, this Spring, run to soft shades of
grey with slight touches of London Lavender. Most ma-
terials are plain, but there's a sprinkling of faint pat-
terns to add variety. These fabrics in the lighter shades
give a touch of snap and style to men's clothes that
they've never had before.

The top coats are the new long models. Many of the
suits have two trousers.

Suits \$30 to \$60

Topcoats \$25 to \$37.50

The Co-op
ALL PROFITS RETURNED TO MEMBERS

BUY EVERYTHING YOU NEED ON YOUR CO-OP NUMBER

506-508
STATE ST.

E.J. GRADY
MGR.

WORLD of SOCIETY

Tournament Makes Number of Parties Smaller This Week

Eight parties are being arranged for Friday night. The state basketball tournament is being held this week end, and for this reason there are not so many parties being planned as might be expected. Spring formals will begin next week end and from that time on there will be a large number of parties held every week end. The parties for this Friday evening follow.

Alpha Delta Pi

Members of Alpha Delta Pi will entertain at an informal dancing party at the chapter house on Friday evening. Mrs. B. Raleigh Martin will chaperon.

Delta Pi Delta

Delta Pi Delta will hold an informal dancing party at the chapter house on Friday evening. Mr. and Mrs. H. H. Brockhausen have been asked to chaperon.

Alpha Omicron Pi

Alpha Omicron Pi will entertain with a formal dancing party at the chapter house on Friday evening. Mrs. N. R. Ritchie has consented to chaperon.

Barnard Hall

Residents of Barnard hall will give a formal dancing party at the hall. Miss Young and Prof. and Mrs. McCaffrey have been invited to chaperon.

Alpha Gamma Delta

Members of Alpha Gamma Delta will give a formal dancing party at the Morona hotel on Friday evening. Mrs. B. W. Davis is to chaperon.

Grad Club

An informal feature party will be given by the Graduate club at the College club on Friday evening.

Delta Zeta

Delta Zeta will entertain at a formal house-warming dance at their new chapter house on Friday evening. Mr. and Mrs. A. M. Brayton and Mrs. J. Streeter will chaperon.

Bouffant and Slim Silhouette Seen in New Evening Wear

Ranging from the youthful bouffant frock developed in taffeta or chiffon, to the slim, straight gowns of heavier silk, the evening gowns for spring are of types becoming to practically all figures.

Rich embroideries in colored and metal beads are much in evidence and lace and ribbon trimmings are good, while feather trimmings are a repeated note.

White still leads in popularity for evening wear, but such shades as geranium, mint, green, periwinkle, madonna blue, pink and pinky beige are used a great deal. Face powder colors, which match the shades of powders used by smart women, have been introduced by Paris. Brown, beige and cafe au lait shades are noted in the dyed lace evening frocks.

Jenny and Patou consider the high waist line important in evening gowns, and usually develop the high waisted effect through the use of beading. This effect can be noticed in the American made beaded frocks.

SHOP WINDOW FLOWERS ARE SIGNS OF SPRING

Old fashioned cineria in purple and pink and gay primroses as they nod to the passerby from the shop windows speak of the spring that is sure to come in spite of the harsh winds that blow against the glass pane. Tulips, jonquils, hyacinths, daffodils—all of these faithfully return when the first spring balm breaks on the air and reports of the first robin and bluebird are heard. Beau Brummels favor corsages of violets with a red rose for color for their lady loves.

Los Angeles doctor finds we all are half lazy. We find he hasn't told the half of it.

ADVERTISE IN THE CARDINAL

Sophomores Plan For Annual Dance to Be Held May 1

The annual sophomore dance will be held this year on May 1, it was definitely decided at a meeting of the committee heads recently, and will be held in Lathrop hall.

"We plan to make this affair bigger than ever before, and in order to do so have received the approval of Dean S. H. Goodnight that the party may be a 1 o'clock dance. We hope to rival the recent Prom to be remembered, and make this a sophomore dance that you can't forget," said James Hawley '27, president of the sophomore class yesterday.

The dance coming on the date that it does will be featured as a May day party, and will have special features pertaining to the time of year. The biggest feature of this year's dance will be the music, which will be furnished by Ted Moore and his orchestra of the Sherwin hotel of Chicago. This orchestra is one of the leading jobbing bands of Chicago, and has been secured only at great expense and after considerable trouble was met in finding a way for them to free themselves from their contract for that date.

All the details of arrangement have not yet been made in connection with the event, but are being taken care of in a very systematic and thorough fashion so as to insure a complete success. However, the music and time and place have been entirely taken care of, and the other matters will soon be in readiness.

Initiations

Phi Mu Delta

Gamma Delta of Phi Mu Delta announces the formal initiation of R. J. Burk, faculty member, Madison; Morris W. Chaplin '26, Hartford; Clifford E. Gustafson '27, Rockford, Ill.; Kenneth B. Kirk '26, Chicago, Ill.; Rex E. Stoneall '26, Hebron, Ill.; Ransom Tyler '28, Milwaukee, and the pledging of Angus Ingebritsen '28, Taylor; Raymond Johnson '27, Madison; Chris Larsen '28, Withee; Otmar Weber '26, Milwaukee.

Gay Printed Silks Hail From Orient; Designs Are Varied

Crinoline days and the age of jazz have at least one point in common; both agree on printed silks.

Far away in the distant past when silk weaving first came in, designers worked into the shiny surfaces of silks floral and conventional patterns of every description. Our great, great, grandmothers kept their printed silks for best wear because these materials were difficult to produce by the crude block print methods then used.

Prints may have come in from India or Persia where the more elaborate materials have held sway since time immemorial. In this country and even in Paris we have been slow to accept the prints which we have regarded as mere novelties. Occasionally some more intrepid fashion huntress flaunted a vivid printed silk scarf or dared appear in an odd frock or blouse of a printed design on silk.

Today, printed silk is not a novelty but the established vogue. Both the designs and colors now used are new and artistically different from the old printed materials. Brilliant and warm as the original design, these silks have an added beauty of warmth and color and sensations in design that vie with fineness and exquisiteness in print.

GRAY SLACKS, BLUE COATS ARE THE VOGUE

Slacks are being worn again this season. The gray slacks which were so popular last year with dark blue coats will once more be in popular demand. The new sport sweaters will look very well with the gray, tan, or brown slacks. The slacks are made in the plain fabrics and in the striped fabrics. A gray fabric with a stripe of gray silk thread running vertically is a popular fabric for slacks this season.

Love of Candy is the Same Today As It Ever Was

Fondness for candy is not seasonal, neither is it limited to an age. When we were gay young things and scampered over the fresh spring greens, we were in our lollypop days. The candy man reports that lollypops in novelty chocolate designs are as popular as they ever were.

Old fashioned stick candy is rapidly gaining in favor, because people are feeling the need for the simple, pure sugar confections. Chocolate designs of every nature and description are appearing as Easter approaches. Little chicks and bunnies with trimmings may be bought for a small sum. These and charming Dutch boys and girls of chocolate in bright crepe paper costumes came directly from Holland.

Confectioners have not slighted the cross-word puzzle, which is done in chocolate and wrapped in gay figured tin foil for 50 cents.

THREE STRAND CHOKERS ARE NEWEST IN BEADS

Newest and smartest are the three strand choker necklaces of small cream tinted imitation pearls alternating with French pearls in colors to match the gown. Some are just a simple three strand necklace which fastens with a clasp set with rhinestones, pearls or semi-precious jewels harmonizing with the costume. Other fetching styles have a larger stone artistically set in the front in the Egyptian fashion so popular now. These range in price from \$4 to \$15.

Green, Yellow, Red Oiled Fabrics Make Sporty Raincoats

Raglan sleeves, flare backs and large pockets give the new raincoats of oiled fabric much the same appearance as regular sport models. Their lightness of weight and youthful style will make them popular for spring wear. Dull green, bright yellow and crimson are the colors in which they appear.

Oiled silk raincoats are lovely because of their fineness and transparency. Their trim shoulder lines, high collars, and small revers make them look tailored and neat. One may get them in a variety of colors, red, open, green, yellow, navy and purple.

The bright yellow slickers which have found so much popularity with both men and women will probably continue in favor because they are heavy enough to be worn in very early spring. The dull green models with the strap collar are being shown again this season.

POLKA DOTS COME BACK FOR THE SPRING FROCK

There is no end to the number of designs from which your spring frock may be fashioned. The time honored polka dot returns in new disguise. No longer is it printed in regular spaces, but in varying sizes of dots, with solid and open dots, octagonal dots and others so large that they form a regular plaided design. Often the dots form merely a border for the plainer materials.

ADVERTISE IN THE CARDINAL

"RAT TAIL" NECKLACES LEAD EVENING STYLES

Interesting in necklaces for evening wear is the new "rat tail" down the back. These are exceedingly pretty and dashing and will be popular to wear with evening gowns in all colors, for they are fashioned from artificial pearls with a pendant of semi-precious stones in a variety of bright colors which hangs down the back after the manner of the French.

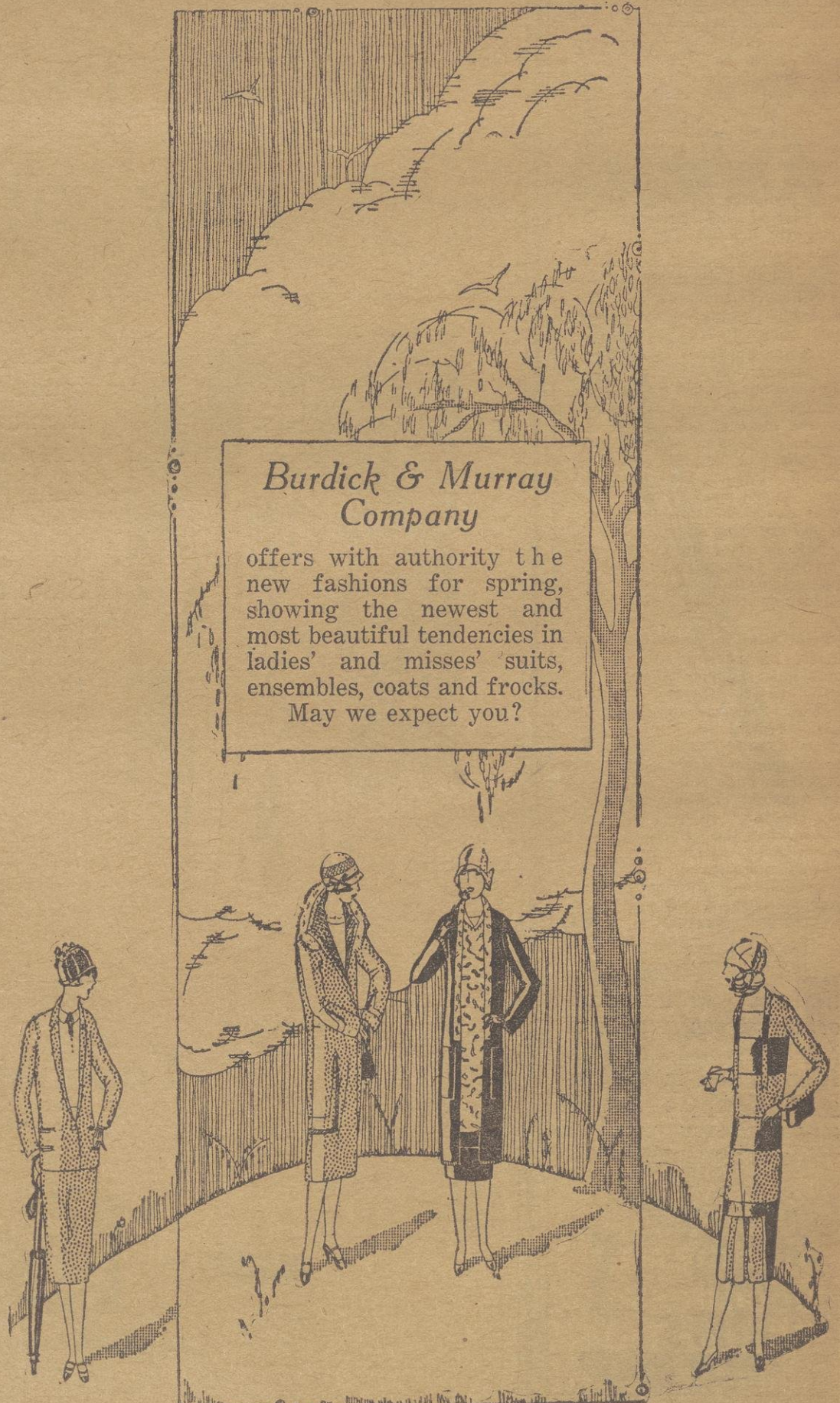
Sport hosiery is extremely flashy this season, striped and in the silk and wool as usual.

Buckles on slippers are more elaborate than ever this season, and onyx and French brilliants are used in buckles on black satin slippers.

50c Marcelling Every Day

Get a first class marcel done by experienced operators at one of the largest and best equipped parlors in the city. We also specialize in hair dyeing, facials, scalp treatments and permanent waving.

The Comfort Shop
209 Wisconsin Life Building
FAIRCHILD 421



Burdick & Murray Company

offers with authority the new fashions for spring, showing the newest and most beautiful tendencies in ladies' and misses' suits, ensembles, coats and frocks. May we expect you?

Many Women's Styles Are Set At Palm Beach

What the lucky minority who visit Palm Beach during the winter months stamp with approval in the way of new season fashions, usually indicates what the women of the entire country will wear the ensuing spring and summer, with a few modifications to suit the individual type and to fit the pocket book.

A survey of fashions worn by society at the smart Southern resort testifies to the uniform abbreviation of skirt lengths, a tendency toward fullness in chiffon dance frocks, the prevalence of white for all occasions, the continued vogue of the small felt hat, generally in a color to match the costume, and the popularity of the two piece frock for day-time wear.

Favor Jumper Frocks

The two piece mode deserves a paragraph to itself, since it is not only a highlight of Palm beach fashions, but is being shown and worn to a considerable degree in New York and is sponsored by Paris couturiers in their spring collections. As it is worn in Palm beach, the two piece frock is one of boyish simplicity with white middie jumper and pleated skirt, the former sometimes of fine wool jersey piped in the crepe which makes the pleated skirt. Two piece dresses shown in New York are frequently of kasha, one of spring's favored fabrics, with short skirts showing an inverted pleat or pleats at front or sides. For more formal occasions are two piece frocks of satin or sheerer crepes, almost all of them endorsing a front flared skirt.

Palm beach fashionables place an invaluable stamp of approval on the ensemble or three piece costume which has taken spring fashions by storm both here and abroad. In the matter of development, as well as pronunciation, the ensemble offers unlimited possibilities for variations and the most popular expressions of the three piece idea for spring promises to be the kasha or twill coat of full-length lined with a brightly printed silk which also makes the frock.

Small Felts Popular

Further carrying out the ensemble idea is the preference shown by smart women for the matching felt.

Fashions approved by winter resort visitors take on a youthful, summery appearance at night, in contrast to the tailored severity of daytime clothes, and affects diaphanous chiffons in white, pale pink and baby blue, named in the order of their importance. The short skirts, sometimes as high as 14 inches from the ground, are extremely full and may glisten with crystals or show fluttering borders of ostrich, frequently matched by a large ostrich fan. A flower at the shoulder is the season's badge of chic.

Print Silks in Various Motifs

Last, but certainly not least prints must be mentioned as leaders in resort fashions. On the beaches, cretane pajamas and coats, and printed silk suits present a riot of color, while printed silk frocks sponsor every conceivable motif from huge polka dots to delicate flowered chiffons, and while Judy O'Grady solves cross word puzzles when the boss isn't looking, the Colonel's lady wears dresses, parasols and bathing suits of puzzle prints, thus proving that cross words make the whole world kin.

FASHION PROBLEMS



—De Longe

My call proved interesting the other night and because spring is here and because I have a failing for athletes I have consented to take a long motor trip with a certain Sig Chi this week end and break his three date a year record

and who knows maybe ruin his chance for the crew!

But what to wear? Miss Manning and I talked it over and we decided that it would be what Sally Fletcher '25 is wearing in the picture. I have been so attracted by the style show that Manchester's have been having all week that I went directly there knowing that their stock is always very select and smart. Sure enough I found the very thing and so reasonable too!

This tan craigleigh top coat is just the thing to wear for it is 100 per cent wool and imported from England and it will not wrinkle even on a long motor tour for it is woven coat prevents wrinkling. The price in this Island country where it is very humid and the moisture in the range of these coats at Manchester's is \$35 to \$56. In fact one can find an attractive sport coat in this shop ranging from \$16.50 to \$60. Sport coats are extremely tailored and feature the velvet collar which is practical for the motorist because the close fitting sleeve makes it easy to shift gears.

The thing that make this coat attractive is the fact that it is the "indispensable kind that know no season," and now I have something that I can wear all year besides being attractively dressed for my date this week end.

The small close fitting imported



French suede hat in dark brown with petite knotted resettes of the same material complete this custom. This type of hat is the "in-between chapeau" rather than the straw this season and convenient for it can be easily packed. Dame Fashion rules for the sport custom the cotton shamoset slip on glove which is made without any opening in the grays and tans. For the school girl this is practical because carrying books is detrimental to the kid gloves.

Connie

RED FIGURES ON ROSE FABRICS ARE POPULAR

Patterns showing tiny figures are produced in one color on half the

width of the fabric, in another color on the other half, offering endless possibilities for the architecture of gowns. Almost all the patterns are printed on a "blond" or rose background. Fashion dictates a red season. Red will run riot in endless design over blond and neutral backgrounds.

ANIMAL, BIRD SHAPES MAKE NOVEL FAD PINS

Among the most novel ornaments of fad jewelry art are the shoulder pins which are popular as decorations for the plainer hats. Shapes of animals, birds and butterflies are effected from rhinestones set in silver. These may be obtained at from \$2.50 to \$4.50.

ADVERTISE IN THE CARDINAL

Around South America CONDUCTED STUDENT TOUR

TO

PANAMA PERU CHILE
ARGENTINE BRAZIL

A Sixty-seven Day Tour

Directed by a University Instructor

Via the Grace Line Through the Panama Canal to Chile.
Over the Andes Mountains to Buenos Aires
Returning to New York by way of Rio de Janeiro

For Additional Information see

MR. EMILIO LEFORT
University Club
Madison

FREER & BLACKMAN
140 S. Dearborn St.
Chicago

GRACE LINE

10 Hanover Square

New York

Get an Ex

by

Having Your Topic
Typed

by

College
Typing Co.

638 Langdon St.

Badger 3747

Open 7 A. M. to 10:30 P. M.



A Presentation of the Newest Phases of the Spring Mode

The Printed Silk Dress

in patterns that are vivacious and colorful is the smartest frock for informal wear.

The New Glove

has a fashionably decorated small cuff and is of a "national" shade.

The Ensemble Suit

has received the endorsement of Paris Openings and a brilliant Palm Beach Season. Shown here in its many phases.

New Perfumes From Rosine

are created by Paul Poirer, the famous fashion designer. Exotic, glorious new odors.

New, attractive, distinctive things throughout the store. We invite you to come in and see them.

Kessenich's

STATE AT FAIRCHILD



Summertime
Goodness for
Winter Thirst



The Coca-Cola Company, Atlanta, Ga.

COMFORT WILL BE THE KEYNOTE IN MEN'S CLOTHING

Blue, Gray Dominate in Suits; Bright Colors Are Popular in Ties, Scarfs, Sweaters, Shirts

Growing Demand For Loose Fitting Trousers and Straight Line Coats Show Men Seek Freedom in Styles This Season;
Square Shouldered Coats and Wide Trousers are Vogue in Smart Clothes

With the arrival of spring comes the shedding of heavy-weight clothes for the light and colorful attire of the season. The keynote for this spring's style can be summed up in the word comfort. This is evidenced in the growing favoritism for the loose fitting trousers, straight line coat, and loose fitting vest. Just as women, who were long martyrs to fashion, have discarded all that makes for discomfort, so men have emancipated themselves accordingly.

Soft shades of blue and gray with thin stripes, light browns and tans are the predominant colors for spring suits, and these are brightened up with more vivid and dashing ties than ever. Polka dots and blue, broad striped effects, varying from brightly gay to subdued, rich colorings, are the season's offerings in neckwear.

Colors Are Outstanding

Bright colors predominate not only in ties, but in kasha cloth or cashmere scarfs which give an attractive effect folding over the edge of a dark coat. Shepherd checked silks are in very good keeping for wear under the lapel when the warmer spring weather arrives.

Blues, lavenders, grays and tans are coming in to displace the white shirt to some extent. The latter is, of course, still the only thing for evening attire, but for daytime wear even the most conservative man realizes the desirability of a little color to relieve the monotony of a sombre suit. Handkerchiefs with a colored border to match the suit or shirt are used in preference to white.

Of interest, too, is the news that men seem to be wearing more jewelry than of late years. The single finger ring, small cravat pin, inconspicuous watch chain or fraternity fob, with cuff links that are both practical and handsome, constitute about all that judgment and discrimination will choose.

Tuxedo Preferred

For evening wear, the white-breasted waistcoat is still worn, but is not in such great demand. This is particularly true at Dartmouth college, which is one of the leading fashion setting colleges of the country.

The dress coat is also in universal wear, in spite of the growing preference for the tuxedo. The former has three black ivory buttons down each side and no button holes. The lapels of the coat are not so wide as last year's and are straight, rolling to the lowest possible point. The attempt at introduction of color into evening wear was not successful, and black and white still holds its traditional place.

In regard to suits, the university chap has already expressed his desires with the appearance of light-colored French suitings, tweeds and flannels about the campus in anticipation of an early spring. The two button, double-breasted cut for coats takes the lead. The coat will be 29 1-2 inches long, with wide, square shoulders, pockets slung low and ventless. Trousers will continue wide, the favored figures running 19 inches at the knee, 21 inches at the bottom.

Sport Hues Are Bright

For sport wear, even greater opportunity is given for the display of bright and dashing colors and plaid effects. Flannel trousers of biscuit hue, both striped and plain are being shown, and the favorite knicker outfit consists of plus fours or plus sixes in pastel shades of blue, gray and tan.

White pull over sweaters have given way for the colored ones, with a tendency toward having sweater and golf hose match in color and design.

Men's gloves introduce a somber note into the brightness and shrieking gayety that predominates all other apparel for spring. The colors in vogue are dark brown and grays with a few light tans for those who insist on harmony of socks, ties and gloves.

Moderately Priced

The unlined leather gloves that range in price from \$2 to \$2.50 are most popular for general wear, but a better quality of silk lined ones may be obtained for \$3 or \$3.50. For dress wear the soft suedes are favored.

Much of the plainness of the dull leather is relieved by heavy stitching in contrasting colors.

In Spring a Young Man's Fancy Turns to—Haberdashery

In the spring a young man's fancy lightly turns to thoughts of—haberdashery. And a man certainly isn't properly dressed if he doesn't wear the proper shirt, so let us turn to consideration of that necessary article of attire.

Plain white, delicate shades of blue, French flannel with thin plain plaids of fiber silk and Spanish



madras are a few of the textiles which are used this spring for making shirts. Long pointed collars are in favor, while removable ones starched or soft, with color to match the shirt are being worn to some extent.

Of course, English broad cloth is still going strong, while cotton is not entirely scorned except by the most elite. Prices range from \$1.50 for the cotton ready made to \$6.50 and more for imported or hand-made effects.

Brilliant Shades Enhance Sweaters For College Man

Red, green, orange, blue, yellow, and in fact any color that is bright will be worn in men's sweaters this season. The women no longer have a monopoly on bright colors. This year a man may flaunt them freely and be right up to the minute in styles.

All the sweaters will be slipovers, according to the style authorities and leading stores. The coat sweater is no longer in vogue but has given way to the lighter weight knitted garment which may be worn with or without a coat.

If you should chance to see what appears to be a walking rainbow on the hill this spring, do not be alarmed. It will be only a college man following the dictate of fashion by wearing a brilliant sweater.

Tan Shoes Enjoy More Popularity Than Brown Ones

Despite the flapping bell bottomed trousers, narrow toes are the tendency dictated by fashion in men's shoes for spring. Shades of tan, brighter than have ever been worn before, will prevail and will surpass blacks in popularity.

Grained leathers are still used for street wear, but Russian calfs are continually gaining favor. Brogues with heavy perforations will also be worn. Prices range from \$8 to \$12.50 with a great number on display at \$10.

For formal wear your old black, plain-toed, patent or dull calfs will still be good. An excellent quality may be purchased new around \$9.

Spring Suits Will Permit Varied Choice

Conservativeness, formerly the keynote of men's styles, is slightly losing ground as shown by the new spring suits. The styles are still conservative, but there are little detailed touches on the spring suits which show that more initiative on the part of the tailor is now being allowed.

As one looks at the new spring suits, one involuntarily gasps at the lightness of the colors. As one proud owner of a new light gray suit put it, "I sure hope it's washable." Of course the darker colors are always in good usage, but the dominant factor in the spring suits is lightness of color.

Trousers Are Loose

Light grays are the most spring-like. The various tan combinations run the gray fabrics a close race for popularity this spring. Light gray suits with a narrow black stripe running vertically about three-quarters of an inch apart are typical. Dark suits are made for the most part of the striped fabric, although the plain fabric is still correct.

Loose-fitting trousers, a straight line coat and a loose-fitting vest are the decrees of fashion for male attire this season. The trousers are wider than ever. Twenty inches around the cuff is the average width of trousers this spring. The coat is shorter than ever, being 28 and 29 inches in length in comparison with 31 inches last year. A certain freedom is allowed in the choice of a two-button or a three-button coat in the suits this year. The vent has entirely disappeared. A certain severity prevails in the precise and correct way in which the coat is made. The vests which fit very loosely have either five or six buttons. Here again, style is not arbitrarily set.

Have Extreme Simplicity

Broad shouldered coats and loose fitting trousers give the wearer of the new spring suit a certain added gracefulness caused, no doubt, by the additional freedom which the loose fitting clothes permit.

Changes this year in the suits are not so obvious at first glance, but in reality the change is more radical than we think. Although suits must be extremely tailored and precise, the loose fitting coat and trousers give a rather unconventional appearance.

Perhaps the more tailored, precise look which the loose-fitting suits of this spring have is due to the extreme simplicity of the tailoring. The lapels on the coats are much narrower than formerly. The border around wide pockets which was used so much last year is "taboo" this year. Even wide pockets are frowned upon in the new spring styles. Many of the new suits are doing away with the two pockets on either side of the bottom of the coat which were so handy, because they held almost everything. This is not, however, a definite decree of the new spring styles.

Suits Give Freedom

The introduction of the lighter colors is an innovation of the college man's. The college man has to a great extent caused the almost radical burst from the conventional dictates of fashion. Instead of the formerly extremely different clothes which the college man at one time effected, he has gone back to the conventional clothes, but has demanded more freedom of style instead of one set style.

College men now wear suits that give certain appearances of freedom and still fundamentally follow the conventional standard. This is the reason for the fact that all the new spring suits follow the standard that the college man has set, for everyone is discovering that a man can look collegiate and well groomed at the same time. New spring suits are very collegiate.

COLORED BORDERS USED ON HANDKERCHIEFS NOW

The white handkerchief which has seemed to override the fancies of fashion is now being displaced by the handkerchief with the colored border. The centers of these handkerchiefs are sometimes white, but are more frequently tan or light blue with a deeper shade of the same color for the border, or perhaps a contrasting color is used as the border.

Smartest



Curl brim hats, mostly in lighter colors and in silver gray, will adorn many a head during the coming months.



Neckties, in fancy grays, light tans and plaids, are increasing in popularity.



Here are the shirts, formal and informal. Formal attire will change but little. Informal shirts, however, are becoming markedly plain with blues, grays, and whites predominating.



Gloves change little from year to year. There is no reason to believe that anything radically different will be shown in gloves this year.



Loose fitting suits, broad at the shoulders and wide at the bottoms of the trousers, are evidently here to stay. The two or three button English model is attracting particular attention.

Regular Cuts Demanded By College Men

"It would be suicidal for us to try to sell anything to college men except the regular college type of clothing," said a salesman of one of the men's clothing stores in Madison. "They effect light colored, loose fitting coats and long, wide trousers."

"When other men copy college styles, the college boys themselves discard them. In New Haven two years ago, the college men started wearing plain, roomy coats and wide trousers."

"The style quickly spread."

Coats Are Loose

Because of their comfort and swagger, the loose coats and sailor trousers are popular with college men. Young business men avoid such styles because they don't want to appear too collegiate, although in a town like Madison many wear modified college styles.

Coats made close fitting with darts both in front and back are favored by young business men, who stick closely to the conventional 18 inch trouser width. College men demand a width of 20 or 21 inches. Their two inch trouser cuffs are worn less than an inch from the ground in the back, whereas in the front the cuffs flop over the shoes.

Spring Colors are Light

"Colors this spring will be light, the lighter the better," the salesman reported. "We get in a stock of very light and medium light colors and always sell out the first right away. Light tans and grays, some with pale green or blue stripes, or even plaid and some with a trifle of heather mixed in, are popular this spring. Slate color is still good. We sell a great many dark blues."

Vest fronts this spring are pointed rather than straight as they have been. Pockets are large, set-in and low. Cheviotte is the most favored material.

The satin stripe down the trousers of the new tuxedos is an inch wide. The only other difference is that the coats are cut lower in the front.

London Lavender, Blue, Gray Are Popular in Coats

By a man's topcoat you shall know him.

Topcoats, stylish, handsome, and comfortable, have been inaugurated by fashion's decree and are indispensable to the well dressed college man. The predominant and most popular hues blend into combinations of gray and blue. London lavender is seen most in campus stores.

Loose, full backs are the essentials for comfort and popularity. There are no belts on the correctly fashioned coat. Three pockets, patch or other wise, are prevalent. Sleeves have departed from the somewhat plebian raglan so much in vogue during the past few years and this season style has demanded the plain set in sleeve.

Two lengths of topcoats are permissible, the long type, which comes a few inches above the ankle and the medium style, reaching to the middle of the calf. The latter is now the most popular.

Buttons and button holes vary according to length, three being the average. Single breasted, deep lapped coats with no lining prevail. Materials are mostly imported cloth, which in design carry an almost invisible stripe, tiny check or blocked plaid. The most invisible stripes have the greatest popularity.

Socks Loud, Bright, Giddy Are Campus Fashion Dictates

No matter whether a man plays golf or not, he may wear knickers and golf socks and not be out of place. But the socks, must be in loud colors.

All socks are bright colored this spring, campus fashion dictates. Whether they be golf socks or the ordinary kind, they must be of extremely gay plaids and checked patterns.

The present fashion in trousers may tend to cramp one's style in the matter of displaying one's socks but this may be overcome if one wears golf knickers.

GAIETY, SEVERITY VIE FOR POPULARITY THIS SPRING

New Feminine Styles Proclaim Individuality Through Contrast of Color Schemes and Fabrics

Brightness Contests Simplicity For First Place in Milady's Wardrobe; Slim Silhouettes Oppose Flaring Bouffants in Race For Favor; Saucy Chapeau Strives to Outstrip Demure Poke

Giddy prints in unexpected flares, godets, and flounces, or simple and almost severe ensembles are the principal notes in the symphony of spring style. One must be very bright or be simplicity itself unless one wishes to be outside the pale of fashionable femininity. For the street, Dame Fashion decrees a slender silhouette in dress. An equally straight coat harmonizes in its matching, lining and completes the costume.

The small close hat which tops the outfit tends to be slightly saucy by means of an upturned brim, and draws a marked contrast to the more demure pokes. In spite of the upturned brim, the small hats with the high crown and the perky bow at the crest are still seen with all types of costumes.

Ensemble is Popular

To satisfy those who favor the ensemble costume, but who dislike its strict simplicity, the simulated ensemble has come into prominence. A gown of this type is most frequently of dark corded crepe, trimmed with self embroidery and slashed to introduce tucked cluster godets.

For the more frivolous, there are the ensemble costumes of plaided taffeta and crepe used in combination with plain kasha.

The note of informality is struck by the gay, exquisite fabrics which brighten the somber backgrounds so long present in the blacks and whites. Each pattern, whether it be a silk crepe, a cotton crepe, a brocade chenille or a voile, is a masterpiece in itself.

Patterns Show Personality

Every type of individual, each personality, can find some pattern to suit and emphasize the distinctive quality. There is a pattern for every mood.

These gorgeous materials are worked out in as many designs as there are patterns of materials. One presents a straight model with a circular drape at the back and side. The next is straight with the back plain and the front paneled or flounced. The circular lace flounce, usually of self color, is a very popular effect.

One frock is tucked from shoulder to hem with tiny painstaking stitches and trimmed with minute collars and cuffs of lace. For the belt, banded lace or insertion appears. The new crushed set-in belt is a detail worthy of consideration. A perfectly straight frock is given its touch of distinction by such a belt.

Lace is the predominant feature of the new spring styles. For morning, afternoon and evening, lace makes its appearance. An inset in the front of a dress, a godet at the bottom, or a frilled cuff, serves to introduce the lace in a filmy effect of softness.

Hats Have Soft Effects

The effect of softness is characteristic of the afternoon gowns and, indeed, of the hats as well. Many of the printed crepes are accompanied by large poke shaped bonnets with lace shaded brims. Clusters of huge flowers are seen on both the hats and the dresses, and often serve to unite the entire costume.

Formal gowns follow much the same lines as the informal frocks take. The straight silhouette, relieved by fullness at the bottom, has gradually superseded the bouffant style. An appearance of slimmness is still requisite, but the straight line must be broken somewhere, by an unexpected burst of lace, or embroidery.

Necklaces Are Popular

Brocades, and combinations of brocades and velvets, are becoming the correct thing for the spring evening wrap. Worth offers a bizarre creation in riotous coloring. The wrap is of rich metal brocade, perfectly straight and confined to the figure by a band of mink. At the bottom, three very full ruffles, also banded with mink, relieve the monotony. The straight line is also softened at the neck by a fur trimmed neck ruff which forms a soft frame for the face.

A tendency to elaborate the costume for both afternoon and evening with necklaces of all kinds is steadily growing in favor. Among the newest fancies for evening are the artificial pearls blended with brilliant settings that rival genuine jewels in their radiance.

Choice in Shades and Shapes Mark Milady's Millinery

Hats of every shade and shape are in milady's wardrobe this spring. Blonds, brunettes, thin or plump will not find it difficult to get a hat suited to their special type. This makes the spring problem of selecting a hat relatively simple.

Colors blend, from the pale thistle bloom to the deep violet, the shell pink to the deep rose, the bright Chinese yellow to the deep terra-cotta and the pale sky blues to the deep electric blue. All shades of green are still very much used, and the black hats are always in good taste.

Trimmings have as great a variety as the shades. Gay French flowers, gold and silver leaves, ribbons of all shades, twisted and swirled into attractive designs, and the usual amount of cording. The hats are decorated with flowers blending into the shades of the hat, with enough variation of color to remind one of the old fashioned garden.

The poke, with the large forward brim or the smaller brim, the turban, and the small chic hats, some with slightly turned-up brims, and others straight, are among the shapes to pick from.

With such a varied selection, and the relatively low prices that these attractive spring hats can be secured for, it might be said that there is a hat just suited to everybody's type, and to everybody's pocket-book.

Crimson and Voile Are Keywords For Spring Kerchiefs

Crimson and voile are the words that one must keep in mind when buying the kerchiefs to complete the new spring costume if one would be up to the minute.

Voile in all hues, but best in the shades of red with embroidered scallops and elaborate corners, sell for 35 to 60 cents. Particularly coy are those perfectly round and sheer, resembling doilies.

Glove handkerchiefs are a necessary accessory for the ensemble that means style this spring. Fine printed or plain linens trimmed with drawn work or clever applique designs are worn in the glove and in a bracelet of gold or silver metal ribbon especially designed to carry ornamental kerchiefs that freshen the old winter outfit and enhance the new.

Dame Fashion has sent some attractive linen bits from Paris decorated with clever pen and ink figures and net edgings that sell for 75 cents. Crepe du chine handkerchiefs in red and white stripes and in pastel shades are marked \$1.25.

CARVED GOLD RINGS ARE SHOWN IN SHOPS

Nevel rings of carved silver set with large pearls and old bold set with indestructible pearls are among the new designs in rings. Huge ones for the little finger or the forefinger in either black, red or in combination made from a firm rubber are the interesting creations in rings this season.

Paris Sends Fresh Fancies By Travelers

(Editor's Note—The following article on the ins and outs of spring fashions was written for the Daily Cardinal by the Marshall Field and company.)

With the coming of spring, we welcome back those who come from Paris fresh from the openings, dripping with the chic of the Campus Elysees and the Rue de la Paix, laden with trunks and cases and hat boxes, and overflowing with news of the spring fashions.

The silhouette, they agree, is straight and short and narrow with a flare at the bottom of the skirt. A new tendency, however, is pushing all the fullness to the fore, leaving the back flat and becomingly plain. Skirts are short, and all the models are characterized by their tailored and almost masculine simplicity.

Suede Coats are Gay

For sport wear and for the campus, since that is also a sporting proposition, kasha and flannel dresses in bright colors, the brighter the better, are being shown. They are boyish and plain, with almost no trimming save their colored leather belts. Two piece dresses, consisting of pleated skirts and jumpers are equally good in the early spring in green, yellow, blue or any plaid combination.

The leather jacket has ceased to be just a skating affair and the bright colored suede coats are very smart to wear with white tennis or golf skirts. The spring sporting wardrobe is hardly complete without a white top coat of kasha, flannel or basket weave homespun, with a tailored collar and on occasion a wide band of fur around the bottom.

Prints Color Suits

For the cut to the city there seems to be two alternatives, a smart double breasted kasha suit—boyish again—or a three-piece ensemble, which is, of course, far more dressy.

Ensemble may be of kasha with a printed silk tunic to match the lining of the coat or of silk and inconsistently trimmed with fur. Often the coat is unlined and so thin that the figured material of the dress shows through. Blouses are usually tunics of printed silk or crepe with long pleated jabots of the same material or full Russian peasant sleeves.

The hat needs only a tiny note, for it is universally small and increased and ironed to cling tightly to the shingled head. It is usually made of soft felt and adorned only with a flat bunch of cock feathers at the back, a felt bow or a stiff bunch of flowers. Combinations of straw and velvet are being shown in a variety of tight little shapes, with a noticeable tendency to shoot the trimming up to the apex of the crown.

Umbrellas are Novel

An umbrella is an essential part of the street costume. No longer the drab sister of the wardrobe, it is now a smart, short little body, Chinese in shape, covered with bright colored silk and topped off by a gay handle. Equally important is the bearer of the spring allowance, a leather purse, which is either more like an envelope than ever, or a mere little bag with rounded top in accordion pleated Canton crepe.

Last of all, and far the most interesting, are the evening frocks. The evening neck line is worthy of mention, for it is slightly rounded in the front and it dips down in the back in a low V. Of interest is the line of the hem, which refuses to stay even and is often cut down on one side or all the way around in jagged petals.

Display New Shade

There are many soft satins with streamers from the shoulder that tie in the back and fall down to the bottom of the skirt. There are beaded slips, always favorites with Parisian designers. There are gold and silver lames. There is a new shade, known as "bois de rose," there is fuschia; there is orchid—

Here they refuse to say more, they are far too busy unpacking their boxes and bundles, laying out "trotteurs" and "tailleurs" and dresses of silk and kasha and chiffon, for these tell best of all the story of the spring fashions.

It's Chic



Either the bright border, the lace border, or the pleated edging is being worn in handkerchiefs.



The small close fitting sport hat in either the felt or French suede with a touch of feather or ribbon is very good.



The silk scarf in the many colors is very lovely this year with its new feature, the silk fringe.



Sweaters are featuring the bright stripes. The straight "school girl" sweater is being worn again this season.



Purses are extremely diversified this season but Dame fashion favors the small purse in the many different shapes.



Dame Fashion's disciples are wearing the straight tailored sport dresses in the bright striped flannels with the narrow belt.

Spring Brings A Thought Of Dainty Frocks

By CAROLYN TROWBRIDGE RADNOR-LEWIS

H. R. Mallinson and company, Inc.

With spring just passed the corner, our thoughts have turned to new clothes. Nothing brings spring quite so close to us as a new hat or frock. Just as naturally as our thoughts turn to clothes so do they alight on the gay, bewitching and colorful silks.

The great difficulty is to make the right selection, right for the time and place as well as for style value and fabric. Here the ensemble offers the first and simplest solution to the problem. Today the ensemble, showing a coat of kasha or flannel with the simple little silk dress, plain or printed, matching the lining of the coat is almost a uniform.

Offer Wide Choice

For general usage this coat is of the beige or natural colored kasha straight and slim, with mannish collar and long, tight sleeves. The dress may be of a matching tone in Molly O crepe satin or of a printed pussy willow or crepe. But it is sure to be straight and simple, short and untrimmed.

It is impossible to make a mistake by selecting an artful print and reveling in the individuality and charm of these silken pictures. But let it be a print of a distinctive character.

The choice of design is a wide one and you can follow your own pet fancy be it for the large splashy motifs or the dainty old timey, all over flower patterns, the curious clever geometrics or a picture of Oriental origin. The unusual combinations of stripes and blocks, dots and plaids prove that there is something new under the fashion sun.

Light Background Shown

A feature of this season's printed pussy willows is the number which are shown with light or neutral backgrounds, rather than the blacks navy blues and dark browns of other years.

These wide printed silks are so cleverly planned that the border furnishes the trimming. All one has to do to make one's own costume is to fashion it on the tunic order and belt it with a matching suede belt or let it go beltless as your figure may demand. The lining of the coat is practically all made when the shoulder seams are stitched and the sleeves are put in.

The vogue of "Indestructible" chiffon voile for the coming spring and summer promises to be most pronounced, not alone for the frilly, frothy, drapy dancing frocks, but for the tailored type of gown into which one can slip in the morning and be appropriately dressed all day. It has sufficient body to take the precise tailored lines and hold them satisfactorily.

Plaited Capes Appear

Even the more formal of the filmy silk frocks take a cape or outer wrap of some sort thus bringing themselves into the ensemble class. With a frock of the printed silk the wrap will very often be of plain voile, matching the predominating color note of the print, and plaited in the narrow half inch knife plaiting.

The blouse reaches to the hips and is finished with a broad hem or turnback facing of the skirt material. While this season there is a persistent call for long sleeves, short sleeves are often in evidence and are far more comfortable if the costume is intended for strenuous action.

PENDANTS ARE VOGUE IN COSTUME JEWELRY

At this moment the pendant formed from emeralds, rhinestones or pearls in a setting of oxidized metal which closely resembles silver is being shown in exclusive shops. These are worn either long or shortened to the choker length and may be purchased for \$4.

ELABORATE EARRINGS ARE HEIGHT OF CHIC

Long elaborate earrings are the height of chic this season with the prevailing sleek hairdresses. They are being shown in artificial pearls intricately fashioned in brilliant settings which harmonize with the new French pearl necklaces and with gowns of every color.

Business Directory

BORNSTEIN BROS.
ELECTRIC REPAIRING
Best Repairing; Quick Service!
809 University Ave. B. 6750

R. W. NELSON
Jeweler
Phone Fairchild 4242
320 State St. Madison, Wis.
1x1

MEAT
Goeden & Kruger
INC.
F. 500

MORGAN'S
MALTED MILK

We match pants to your coat or vest. Bring or mail vest or sample. \$23.50 suit or topcoat made to measure.

REX TAILORS
306 State St. F. 4219

UNIVERSITY TAILOR SHOP
Suits steamed and pressed 50c.
Let experienced tailors serve you.

E. R. NYBERG
B. 4498 409 N. Frances

EMIL ORNE
Merchant Tailor
Place your order for
spring suits now.
Phone B. 797 608 University Ave.

Have your cleaning and pressing
done on your rebate.
QWEN & VETTER
Co-op Tailoring Co.
508 State St. B. 7542

Rentschler
FLORAL CO
226 State St. B. 179

Arthur O. Utter
PAPERING & DECORATING
Save IT with PAINT
934 E. Dayton B. 1752

The College Refectory
"A Good Place to Eat"
The Student Cafeteria
672 State St. B. 3185

WITTWER'S CAFE AND
TEA ROOM
The best meals in the city our
modest aim.
727-729 University Ave. B. 1539

MONEY LOANED
On diamonds, jewelry, clothing and
articles of value. Cash paid for
used diamonds, jewelry, clothing,
musical instruments and sporting
goods, etc.

SQUARE LOAN OFFICE
435 State
Corner Gilman and Broom

Mary Adelaide
Donaldson
First Central Building
Room 515
SMART MILLINERY OF
EXCLUSIVE CHARACTER
GAGE HATS
Phone F. 4734

A. Hauge Phone F. 2099
Badger Rent-a-Car
Drive it Yourself
Special 10 Hour Rates
We Deliver Car to Your Door
Sedans, Tourings, Coupes, Roadsters
313 W. Johnson Madison, Wis.

Gloves Will Match Costumes in Color For Spring Effect

Gloves, gloves, gloves and what
odd ones!

This was our first thought as we
reviewed spring fashions in gloves.
Gloves, of every description, trim-
med in every design and to match
every costume will be worn this
spring.

Silk gloves are always good for
spring wear and this year they seem
even better than ever. There will

be silk gloves to match any and
every outfit that milady owns. Long
gloves and short gloves in a great
variety of colors are now being
shown. Of course, the staid colors
of tan, black and gray will be worn,
but so will the new spring colors of
blues and purples and even the nu-
merous shades of pink.

The kid gloves in tan, brown and
black with the cut work cuff are
good for ordinary wear this spring.
They are plain except for the cut
work on the cuff.

Tan suedes are once more pop-
ular. Fancy, many colored cross-

stitching on the cuff gives this
glove a very springlike air. Light
colors in the suede gloves will be
good wear this spring especially for
sport.

JEWELRY DECORATES THE SPORT COSTUME

Sport costumes come in for their
share of ornament by way of jewel-
ry this season, for much in vogue
are the new sweater sets of tie and
cuff pins. These come in various
shades of popular tinted pearls, in
enamel, in silver with gold tips
and in hammered silver ranging.

FRED W. KRUSE CO.

209 State Street

You are Cordially Invited to Attend Our SPRING OPENING



Wednesday, Thursday, Friday

Perfection of costuming, the selection of apparel best suited
to interpret your individuality may now be accomplished to the
greatest advantage at Kruse's. Quick to catch the spirit of the
changing seasons, and yet intent upon featuring only those
tendencies which are certain to remain in the mode, each section
is now "in readiness" for the spring season.

Our Mr. Olson has been in New York the past two weeks,
where he has personally selected the most authentic fashions as
dictated by the world's leading designers—fashions that will in-
deed be a tribute to the tastes of university women. May we
expect you tomorrow?

*The completeness of stocks will make
selections easy*

Student Charge Accounts Solicited

Graduate —and Go!

You can travel to Europe
and Back for as little as \$155

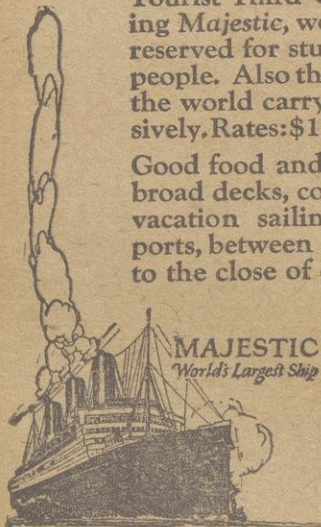
See a bit of the world before you settle down
to a real job. Get a fund of pep for a good
head start. Get a real knowledge of conditions
and affairs for a helpful background.

Here's the way!

Our College Specials

Tourist Third Cabin on great ships—including
Majestic, world's largest steamer—entirely
reserved for students, educators and congenial
people. Also the Minnekahda, only steamer in
the world carrying Tourist Third cabin exclu-
sively. Rates: \$155 to \$180 according to steamer.

Good food and service, attractive staterooms,
broad decks, commodious public halls. Seven
vacation sailings to all principal European
ports, between June 18 and July 3, convenient
to the close of college.



This advertisement appears in
Yale Daily News, Californian,
Vassar News, Michigan Daily,
Cornell Sun, and other leading
publications in colleges through-
out the country, from which
men and women are reserving
passage on the College Specials.

WHITE STAR LINE
ATLANTIC TRANSPORT LINE • RED STAR LINE
INTERNATIONAL MERCANTILE MARINE COMPANY

Spring Coats Allow Choice Of Novelties

Fawn skin, charmeen, bengalene silk, padrone, faille ribbed silk, kashmir flannel and kasha cloth are some of the fabrics popularly used in the new spring coats. This great variety of new fabrics now in use should produce a greater novelty in new spring styles for coats than it does.

The style most typical of this spring is the new flare effect on the silhouette coats. The flare is not very conspicuous but succeeds in breaking the straight silhouette effect. In sport coats the English tailored coat is the vogue.

Colors Are Varied

The small fur collar or the fur border is very common on the spring coat this season. Fox, dyed seal, dyed squirrel, white or tan summer fur and thibet are used most frequently.

Perhaps the greatest novelty and variety in the new spring coats is the great number of colors now being used. Especially noteworthy are the two tone effects which seem the main color idea of this spring. Dame fashion is very fond of the tan and brown effect. The shaded grays are also a very popular combination this season.

A coat of one of the new wool fabrics in the shaded tone of brown or gray which is perfectly tailored has a great many uses. This coat which is made in the silhouette style can be used for sport wear, traveling, town wear or motoring. A coat of this kind, which sells at \$50, is practical as well as good looking.

Use Fur Trimmings

For afternoon and informal evening wear perhaps the most attractive kind of coat is one made of the ribbed silk or bengalene. These coats are trimmed in fur, having both for collars and a border of fur at the bottom of the coat. Lined with bright colored silk crepe and trimmed in fancy braid, this silhouette style coat makes a very fine dress coat. Black, brown, cocoa or gray are very popular in this style coat.

One of the newest coats most representative of this spring's styles is a flare coat of wool charmeen with kit fox fur. This coat cleverly achieves the new flare effect by a narrow belt which goes inside the coat and ties in front. A scallop applique effect gives the coat an air of smartness and proclaims the ability of the tailor who makes the coat. French green, beige, navy blue, gray or black are the colors in which this coat is made.

Favor English Tweed

Spring coats some with the straight silhouette, some with the new flare effect seem to show beauty not in the way they are made but in the little finishing touches which give the coats a very finished, correct appearance. Such things as a gardenia sewed either on the fur collars or the lapel of the coat, or tailored straps of ribbon just above a fur border or soutache braiding in various colors sewed either on the collar or the skirt of the coat, or fancy buttons placed along the sides of the skirt or insets of corded tuckings and metal braid furnish the details which make the spring styles of this year just a bit more tailored and fastidious than those of last year. Perhaps it is these small touches which make the coats more expensive for they range in price from \$35 to \$185.

In direct contrast to the dress coats of this spring which try for a slim effect are the new tailored sport coats of English tweed, soft wool and imported fabrics which try to give a square effect to the wearer. The double breasted top coat



seems most popular in the tailored coat. Colors in this type of coat are gray, brown and black. The prices of the tailored coats are \$40 to \$50.

Follow Last Season

For extreme dress wear the light colored cashmir flannel coats of white, yellow, beige, gray, French blue, French green and French pink with a luxurious collar of white shirred lapin fur are very appropriate.

The general trend of the style in spring coats seems to follow that of last season. The flare effect is new but has not as yet become common. Silhouette coats which were worn last fall and this winter are still

being worn this spring. Fur collars and fur borders are a trace of last year's styles, so even that is not a new spring touch. New colors are perhaps the newest touch in 1925 spring coat fashions.

ONE STRAND CHOKER IS BECOMING POPULAR

The simple, one strand choker of large French pearls has found favor with the smartly dressed woman. It is worn in both the tinted and natural colors and in the gold, both plain and in filigree. The smoked pearl is becoming exceedingly popular because of its neutral color which permits of its being worn with a costume of almost any color.



Baron's Spring Opening Will Interest All Co-eds

Because this store specializes in apparel for University women, and because our Spring showing is unusually delightful and very, very new—you will want to visit us during Spring opening. The following program has been arranged:

Tonight

Unveiling of windows—Showing new coats, frocks, ensembles and accessories against beautiful new backgrounds.

Thursday

2 to 4 p. m.—Display of new apparel and accessories by mannikins. Flowers to all 2nd floor visitors.

Friday

2 to 4 p. m.—Promenade of Spring garments by mannikins. Flowers for all 2nd floor visitors.

Baron Brothers
INC.

Tucks and Ruffles Are Stylish Trims For "Evening Wear"

Pajamas may be exquisitely dainty, severely tailored or a compromise between these extremes and still be smartly fashionable. There is a style for every type and a type for every style.

For the college girl who affects tailor-mades, there are pajamas of jersey silk, trimmed with a wide band in a contrasting color, but for

the rest, very severe. Exquisite laces, pin tucks, ruffles, rows of hemstitching and ribbons set off another set of pajamas which are as elaborate as the first are tailored. These come in delicate pastel shades of every color.

A happy medium is expressed in still another style made of dainty materials severely cut, but trimmed with bands in delicate, contrasting shades of color.

ADVERTISE IN THE CARDINAL

SPRING ANNOUNCEMENT

Hirsh Wickwire

*The Finest of
Clothes Ready to Wear*

**The
Campus Clothes Shop**

Ready to Wear Clothes for Gentlemen

Present their compliments and desire to inform you that they are now displaying for your personal consideration the Newest Evolutions in Gentlemen's American and Americanized London Fashions for
Spring and Summer
Suits Topcoats
Sports Clothes

**CAPITAL CITY
RENT-A-CAR**

Drive it Yourself

Phone F. 334

**Special Day Rates
and Trip Rates**

Inquire about our free
insurance for you.

531 State

434 W. Gilman

For Formal Wear—the "Tux"



Formal wear for men is the same this season as it was in the winter featuring the well tailored tuxes. White vests predominate but the black vest is still very smart.

Men's Scarfs and Neckwear Varied in Color This Year

Independence in the color and kind of scarf is now the style in men's neckwear. The color and the style of scarf is left entirely to the discrimination of the wearer this season.

In keeping with the general tendency toward bright colors which is evident in men's as well as women's clothes this season, the more flashy scarfs will no doubt be worn more often. A bit of bright color under the new spring overcoat is in good taste this season. Perhaps the bright scarfs are trying to keep up with the gay colored ties which are in such popular demand this spring.

Spotted foulards and other figured silks are in demand for neckwear this year. Kasha cloth is used in scarfs this spring. The brighter the scarf the more popular it is, the authorities on scarfs claim.

For dress wear the heavy white silk scarf is in best usage, although there is a growing tendency to use

tans and light gray even for dress wear.

The figured silk scarfs in the blue, brown, gray red, orange, and purple shades are replacing the plaid flannel scarfs entirely. Flannel scarfs are not being worn this spring by the male followers of fashion. Peculiar designs which at least carry out some definite design are popular. The many colored scarf seems to have as great a fascination for the man as for the woman.

Warm, Soft Kasha Leads Sport Goods For Genuine Style

Kasha coats, ensembles of kasha, sports frocks of kasha—everywhere, everything, kasha this spring!

And what is this strange-sounding word whispered in every possible variation of pronunciation across department store counters and wherever else talk of fashion centers?

Kasha is the latest and most loudly acclaimed descendant of that ancient and worthy line of cashmeres.

Originally it grew, an exquisitely soft wool, on the backs of goats in India. Its name comes from Kashmir, India, the place where it was manufactured into a rich stuff for shawls and scarfs.

Cashmere shawls were soft and warm, but the new kasha cloth is more supple, warmer and softer. It lends itself more readily to the uses of fashion, because it dyes beautifully, falls in smart lines, combines utility, comfort and style, and comes in a variety of colors, although the natural shades are leading the color procession for early spring.

Unique Handles



The Biggest and Best Edition Ever Published !

Haresfoot Number of the

OCTOPUS

out today

Without doubt this month's OCTOPUS is the greatest ever published. For one thing, it's the biggest—60 pages crowded with good humor and beautiful art work.

You'll agree it's the best humor magazine you ever read.

Here's one that will turn up the corners of your mouth—

Stude: "Changed your bed linen yet?"

Roommate: "Heck, no; 'taint worn out yet."

And another—

"Did you take a bath last night?"

"No; is there one missing?"

Then we read further—

"A person asked to classify French heels, said: 'I should think they would come under dresses.'"

Hundreds of jokes, verses and pages of art work vie for your first attention. All through the book the romantic and humorous situations of "Ivan Ho!" the Haresfoot play, are capitalized upon, for this is the annual Haresfoot number—the feature edition of the year.

There's the now famous Octogravure section, the enlarged Exchange section and the new feature, "Octy's Book Shelf," a serious discussion of the latest literature. Then there's the cover, and it's a dandy, the work of Rosalind Hightower.

25^c

So don't miss out today. Buy several copies and send them to your friends. It will sell Wisconsin!

The Biggest Quarter's Worth You Ever Bought!

ON SALE ON THE HILL TODAY

FISCHER'S
PARKWAY
THEATRE
THE BRIGHTEST SPOT IN MADISON

FRI.-SAT. MAR. 27-28
MATINEE SATURDAY

THE LONG AWAITED DRAMATIC TREAT

SAM H. HARRIS
presents



"RAIN"
The WORLD'S GREATEST DRAMA

by John Colton & Clemence Randolph
Founded on W. Somerset Maugham's
Story "MISS THOMPSON"

PRICES—Nights \$2.50, \$2.00, \$1.50, \$1.00. Mat.—\$2.00, \$1.50, \$1.00, 75c
Plus Tax. Seats Now on Sale at Box Office.

STRAND
CLARKSON'S PHOTOPLAY THEATRE DE LUXE

Continuous Daily 1 to 11
Admission 35c

STARTING THURSDAY

Eugene O'Brien

and

Mae Busch

—in—



A First National Picture

A Dramatic Thunderbolt Staged Amid Mount
Rainier's Scenic Splendor and Cocur
D'Glene Silver Mines.

LAST TIMES TODAY
JACKIE COOGAN

—in—

"THE RAG MAN"

COMEDY—NEWS—FABLES

Color, Design Are Features In New Bags

Bags and purses for each occasion are represented in the new spring styles. There is the leather vamp purse for street wear. A black patent leather purse trimmed in red is one of the prettiest of the combinations in this style. Vamp purses are ideally suited to milady who must spend the afternoon shopping.

The double compartment idea which is carried out is useful. One of the compartments contains the coin purse, the other the vanity case. The handle is adjustable and the bag can easily be used as an under arm bag. The price of the vamp purse is \$3.50.

Arm Bags Add Colors

Envelope bags and under the arm bags are too convenient to go out of style. For the sake of variety we have the latest spring envelope bags trimmed in different colors. Color seems the dominant touch in the new spring envelope purse. The outside compartment for the handkerchief is very popular in the new purses. These bags range in price from \$3.50 to \$8.

Black moire bags with fancy silk lining are good for spring wear. The holding capacity of these bags is really remarkable. Compacts, gloves, handkerchiefs, money and all other necessities for milady who goes to a tea or afternoon bridge can be carried in the moire bags. Brown, taupe, gray, tan and other colors beside black distinguish the spring moire bag.

Variety of colors in the bags will provide the desired uniformity or the desired contrast in the new spring wardrobe. The price of the moire bag which milady wishes will from \$3.50 to \$8.

One of the more expensive models was trimmed by means of a hand-painted insert and had a crystal clasp. The envelope style moire bag is very pretty this spring. These are trimmed by means of fancy ornaments. Japanese figures in blue, silver, gold and green make an exquisite design for a gate-top more bag with a key lock.

Two Tones Featured

Two tone bags are a feature of this spring's purses. We have the two tone bags in the moire, leather and beaded bags. The color combinations are many. These bags range in price from \$10 to \$22.50.

Gray and silver beaded bags with flower designs are beautiful. They are imported and made for the most part from steel beads. The beaded bags with plain or braided fringe and with purse or gate tops are good for practically all occasions.

ADVERTISE IN THE CARDINAL

Military Ball

and

Spring Formal

Make Your

Reservations

Early

Yellow

Bad-500-ger

Cab

Call Mr. Fuller



A CENSUS OF STYLE AT AMERICA'S LEADING UNIVERSITIES

Here are shown four models designed as a direct result of a survey and study of the clothes preferred by students at America's leading universities. They reflect the sound style judgment and good taste of the best dressed college men. The sack suits, the dinner jacket and the top-coat on this page embody the details of style approved for spring. You may safely be guided by these models in selecting your spring apparel.

Fabrics from world famous looms have provided us with their choicest products. Flannel takes the lead, along with new shetlands, graceful cassimeres and chevots. All the wanted shades in

Kuppenheimer Suits and Topcoats



The "U" Sack

Thirty-inch jacket, natural shoulders, blunt notch lapels, wide button spacing, flap pockets, straight full back without vent, sleeves finished with vent and two buttons.

The Madison Sack

Half inch shorter than "U," closer button spacing, combination flap and piped-in welt pockets, full box back and otherwise like the "U" jacket.



Vest and Trousers

Six-button vest, small triangle opening at bottom. Trousers wide and straight, two-inch waist-bands, wide belt loops, back buckle straps, and quarter top pockets.

The "U" Tuxedo

Same full body as the "U" suit coat. Long, sweeping lapels, with pockets, coat 29 1/2 inches long.



The Grid Top-Coat

Long, four-button fly-front coat, natural shoulders, straight lines with full back, patch pockets.

Satisfaction
Guaranteed

Speth's

222
State Street

The house of Kuppenheimer good clothes

Haresfoot Club Origin Dates Back To First Production 27 Years Ago

The story of Haresfoot's growth is a college epic in itself.

In 1898 an original comedy, "The Professor's Daughter," written by Prof. J. F. A. Pyre, was presented by the Haresfoot club, an organization formed that spring to provide a outlet for dramatic activity on a campus which up to that time had no dramatic club worthy of the name.

Today, after 27 years, the Haresfoot club is still presenting productions, but the growth during that quarter of a century has been remarkable. Whereas in 1898 perhaps a few hundred students witnessed "The Professor's Daughter," and the itinerary consisted of one stop, Madison, this spring the 1925 production, "Ivan Ho!" will play before an audience of more than 35,000 persons in 13 cities in the middle west, Sheboygan, Oshkosh, Appleton, Minneapolis, Davenport, Peoria, Indianapolis, Cleveland, Detroit, Chicago, Racine, Milwaukee, and Madison.

Since 1909, when the "Dancing Doll" was presented, Haresfoot shows have all been musical comedies. Male students not only always have written the books and music and built the scenery, but men have taken the parts of women. In accordance with the club slogan, "All our girls are men, yet every one's a lady," the club has always succeeded in finding a man to take even the most difficult of female roles.

The show this year "Ivan Ho!" written by Porter F. Butts '24 and John A. Dollard '23, and based on Scott's novel, "Ivanhoe," is a production in which thirteenth century Anglo-Saxon humor mingles with quips of 1925 extraction. The lyrics and music for the 18 songs of the show were all selected only after keen competition between 16 contestants, and the 26 numbers of the three choruses as well as the ten cast members were picked from more than 400 men who entered the original tryouts.

All the scenery, consisting of medieval castles, great gateways, turrets and balconies are being constructed under the direction of Sidney R. Thorson '24, manager of the production, by 15 students.

A large portion of the \$45,000 going into this year's production will be spent on the 225 costumes, involving 17 complete changes.

The direction of the show is in the hands of E. Mortimer Shuter who has coached two previous Haresfoot productions. The star this year is Byron Rivers '26, of Louisville, lead in "Twinkle Twinkle" last year also, and who when in wig and gown is as a dainty a bit of femininity and dances with as much grace as any maid who ever came out of the Southland.

Palm Beach introduced the large pearl topped combs for evening wear and many fancy bandeaux are worn as well as Russian style head-dresses in gold and silver brocade. Many have adopted the fashion of wearing a flower over their ear in Spanish style, usually using a white gardenia or colored camellia.

Lapis Lazuli is seen a great deal this season, and is particularly effective when set in dull filigree silver.

"Hello Man!"



Don't forget my Wrigley's. Bring it when you call on sister.

Insure your welcome with this wholesome, long-lasting sweet.

Use it yourself when work drags. It is a great little pick-me-up.



Percy Grainger is a Deeply Serious Artist, Says Mills

"Percy Grainger is a pianist of deeply serious purpose," declared Prof. Charles H. Mills, director of the school of music. "He has individuality, and in octave and passage work he is technically well equipped, setting off dainty and pleading melodies brilliantly and then investing them with poetic charm all their own."

Prof. Mills acclaims Grainger a star in the world of music because the young Australian has attained unlimited praise and fame as a result of his interpretation and composing.

Grainger will appear in a piano recital in Madison on April 1, his concert concluding the concert series of the Union. The concert will be given in the university stock pavilion.

While the program which Grainger will place before his Madison audience has not yet been announced, it is believed that Grieg's compositions will form a major part of the concert. Grieg and Grainger were close friends.

Dame Fashion rules either the tailored coat with the narrow velvet collar and the double breasted Prince of Wales model or the dressy coat of fine wool trimmed in fur, feathers, and monkey fur.

WISCONSIN HAS 36 SORORITIES

University Maintains 23 Social, 8 Professional and 5 Honorary

Wisconsin has 36 sororities on its campus.

This figure includes both national and local social sororities, national and local professional sororities and honorary sororities.

Of the social there are 19 national and four local. Of the professional there are four national and four local. There are five national honorary sororities.

Of the 36 only one has been established here for 50 years. That chapter is Kappa Kappa Gamma, which was established in 1875, and which recently celebrated its fiftieth anniversary.

Six others have been established here from 25 to 50 years. The last national sorority was established here in 1921.

Two other organizations, Mystic circle and the Intercollegiate club, have grown out of sororities. Mystic circle is made up of a group of representatives from a group of sororities, and Intercollegiate club is composed of transfers from sororities of other colleges and universities.

Out of the 2,985 under graduate women on the campus, 703 are affiliated with sororities.

White leather is the latest thing in the flat envelope purses. Most of the time a jeweled motif forms the only trimming of the bag.

Gray predominates in the golf suit. The trousers are cut extremely loose; red predominates in the sock which is featuring the large

plaids. The slip on sweater has taken the place of the tuxedo model which is completed by the small bow tie, preferably red.

STETSON HATS



E. J. SCHMITZ AND SONS CO.
On the Theater Side of the Square



THE finest materials, expert designing and careful workmanship make every Stetson a masterpiece.

STETSON HATS

Styled for young men

COMPLETE SHOWING OF STETSONS

Olson & Veerhusen Co.

7-9 N. Pinckney St.

The Easter Clock

Points to Timely Accessories

It's the little things that count in achieving the perfect ensemble. So here are the correct accessories. Hand-bags, gloves, hosiery, handkerchiefs and lovely bits of costume jewelry—those tasteful and enhancing notes that distinguish and make distinctive the well groomed woman.

Special prices add to the interest of selection

Dainty neckwear in variety here suggests a charming freshening touch—50c to \$5.00



Corner State and Gilman

TOWER'S FISH BRAND COLLEGE COATS

SNAPPY, SERVICEABLE WATERPROOFS
All the go with College men



Varsity Slickers
(YELLOW OR OLIVE)

Sport Coats
(YELLOW OR OLIVE)



"The Rainy Day Pal"

AJ. TOWER CO.

BOSTON
MASS

WORKERS REPAIR TORNADO DAMAGE

Relief Organizations Labor in
Effort to Rebuild and Pre-
vent Epidemic

CHICAGO—Southern Illinois and Indiana and other states in the path of last Wednesday's tornado hummed with industry today as the work of rebuilding and restoration progressed.

Warm sunny weather prevailed in most of the stricken territory as carpenters plied hammer and saw on hundreds of new dwellings and relief workers continued to give aid.

Danger of epidemics was lessened today as sanitary measures were advanced. The water supply in every affected community was watched, and a supply of diphtheria anti-toxin was rushed to Carbondale, the relief center, at the direction of Dr. I. D. Rawlings, director of the Illinois department of health. Doctors and nurses reported the sanitation situation much improved and that favorable condition of the weather had greatly decreased fear of any extended outbreak of disease.

The drive for relief funds continued throughout the country with totals increasing hourly. Chicago expected to raise its quota of \$500,000 within 48 hours. Another \$500,000 was provided when the Illinois legislature passed an emergency relief bill.

Pending rebuilding of factories, relief workers were centering efforts on obtaining employment for working men, who were the greatest sufferers. Appeals were made to the state to start road construction in the Illinois area to provide temporary employment.

With three additional deaths at Griffin, Ind., the number of fatalities in five states was increased to 813, but this figure did not include a score of persons believed to have been incinerated at Murphysboro. The Red Cross announced that 2,939 persons were injured. Property loss was estimated in the neighborhood of \$20,000,000.

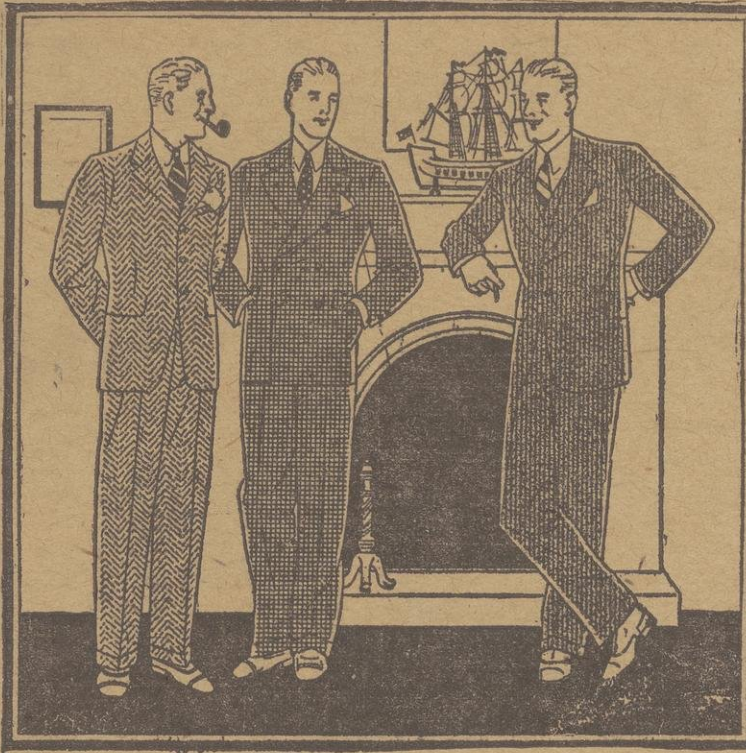
Bracelets must be worn below the elbow, according to Dame Fashion.

Gay Hankies



PARKWAY
NOW PLAYING
ADOLPH ZUKOR and JESSE L. LASKY PRESENT
THOMAS MEIGHAN
in
"Coming Through"
a Paramount Picture
WITH LILA LEE and WALLACE BEERY
ILLINOIS CYCLONE MOTION PICTURES
NEWS ORCHESTRA SCENIC
"Our Gang" Comedy
"A Mysterious Mystery"

Chic Collegiate Cut Clothes



The tall stiff tailored hat turned back to excess on one side is excellent for the tailored suit.

The small hat which droops over one shoulder with feather trimming is very smart.

Small close fitting hats, built on extremely high lines in combinations of ribbon and felt are replacing straw sport hats this season.

Pleated, brightly colored, Buster brown collars and cuffs are very smart especially when combined in two colors. The stiff tailored sets, cuffs and collars with the lace inserts, are both being worn extensively.

Metal lace is used for borders, incrustations, medallions and motifs of various sizes or shapes in the newest handkerchiefs.

ADVERTISE IN THE CARDINAL

ADVERTISE IN THE CARDINAL

With the Alumni

R. S. Hulce '11, professor of animal husbandry, has sent in his resignation to the College of Agriculture. Professor Hulce formerly had the management of the Medill McCormick farm at Byron, Ill., and at Wisconsin had charge of the dairy herd. He will go into commercial work with some manufacturing firm in Chicago.

Milton Mellar '24 has accepted a position as instructor in physics and agriculture at the Kenosha Union Free high school.

Douglas J. Mangan is one of the candidates for the circuit judgeship of the seventh branch, Milwaukee. Mr. Mangan attended the Law school here and was admitted to the bar in 1905.

A. A. U. W. TO PRESENT THREE PLAYS TONIGHT

Wednesday night the long anticipated presentation of the three plays under auspices of the Madison branch of the American Association of University Women will be made in Lathrop hall at 8:15 o'clock. The productions to be given are "Columbine," "The Brink of Silence," by the University players, and "Hyacinth Halvey."

Proceeds of the evening will go into the A. A. U. W. scholarship fund to provide three scholarships totaling \$500 to deserving university students.

The public is invited to attend and tickets will be on sale at the door.

The Home of the Better Plays

ORPHEUM

ALL THIS WEEK

Bargain Matinee 25 & 35c
Today, 2:30

Dorothy LaVern
Players

The greatest dramatic success in the world and the most discussed play in America.

THE Fool

CHANNING POLLACK'S great healing drama of the big problems in the world.

THE ONE PLAY YOU
CAN'T AFFORD
TO MISS!

CAST OF 25

See the crowning of the Spring Opening Queen by Mayor Kittleson on stage after parade tonight. It's going to be a Gala Affair.

—NEXT WEEK—
"CIVILIAN CLOTHES"

A Gallery of Styles

YOU'VE often heard the expression "A picture no artist can paint." That's just the kind our Clothing Department presents. It's a veritable "Gallery of Styles." We feel that no artist could do justice to the masterly Stratford styles we are showing—"the clothes are mightier than the artist's brush"—and so we are publishing this clothing advertisement without fashion illustrations.

The Stratford designers have truly outdone themselves. The new models in both suits and topcoats created specially for our individual requirements are far ahead of all past accomplishments.

In our display are many distinctively new fabrics and color conceptions shown exclusively in Stratford Clothes—the richest and rarest wools from the finest foreign and domestic looms.

Men who are interested in really fine clothes should take the time to see this interesting display. A visit of inspection will entail no obligation. There will be no formalities—just a friendly showing of the new Stratford styles that will be seen on the best dressed men this season.

The Crescent
CLOTHING CO
Specialists in Apparel for Men & Boys

Stratford — "America's Finest Clothes"

SEVERSON WANTS DRASTIC TAX CUT

Asks Senate to Reduce Property Tax By \$26,000,000 in Bill

A reduction in property taxes to the extent of \$26,000,000 was proposed today to the legislature by Sen. H. J. Severson, Iola, in a substitute amendment to the Morris income tax reduction bill, pending in the state senate. The substitute, however, refers to property taxes and has no reference to income.

The substitute provides for a flat decrease in general property taxes, both real and personal, of about 25 per cent.

General property taxes now total slightly more than \$100,000,000 per annum, and in the event of the enactment into law of the Severson substitute, the reduction proposed would mean a saving to the taxpayers of approximately \$26,000,000 according to Sen. Severson.

To carry out this program Sen. Severson proposes to cut the taxes levied by town boards one fourth, limiting the total levy to three-fourths of one per cent in place of 1 per cent as the law now provides. He further proposes to cut the levy made by village boards another 25 per cent, reducing it to $\frac{3}{8}$ in place of 1 per cent; and to cut the levy for municipal purposes levied by the city council to $2\frac{1}{2}$ per cent in place of the $3\frac{1}{2}$ per cent in the present law. The greatest cut is in the county tax, prohibiting county boards from levying more than three-tenths of one per cent in place of the 1 per cent of the present law.

While county boards have not yet levied the full amount of 1 per cent the average levy is a little more than one-half of 1 per cent, so that the cut in county taxes would be a little more than \$7,000,000 per annum, according to the senator.

The bill also adds a section which declares the public policy of Wisconsin to be that no tax should be levied which is greater than is required for the efficient conduct of the government and that in view of the constantly growing demand for reduction in taxation, a substantial reduction in property taxes should be enacted into a law by a reduction of the legal limitations of tax levies.

A further section makes it a criminal offense for any member of a town or village board, common council, or county board to vote to levy any tax in excess of the limitation provided by the law and also making it a criminal offense for any town, village or city clerk to place such excessive tax levy on the tax roll, with the further proviso that any officer who should violate the provisions of this section shall be guilty of malfeasance in office, shall vacate his office by such malfeasance, and be subject to a fine of not exceeding \$1,000 or by imprisonment in the county jail not exceeding six months, or by both such fine and imprisonment.

Commenting on this phase, Sen. Severson said: "This last section is necessary to administration of the tax law at the present time as the records disclose officers of municipalities are violating the law and making excessive levies and collecting taxes which are illegal and beyond the amount fixed by law."

Taxes levied for school purposes do not come within the provision of this bill, so that if the bill should pass, it would not cripple our educational system, according to the author. Neither will it affect the interest to be paid on indebtedness contracted.

"General property taxes have increased two and one-half times in ten years, coming up from \$41,000,000," its author contends. "The bill would only reduce taxes to what they were in 1919 or the highest peak during the war period. The only way to reduce taxes is for the municipal authorities to spend less money and when they are allowed to spend as much now as they were during the high war period, it should seem insufficient."

"We have been constantly jumping upwards and climbing; now let us see if it is not time to jump down and get back on a sound basis of taxation. Let us cut out all waste and extravagance and by doing that there is no reason why we cannot easily reduce our tax budget one fourth and save the people \$26,000,000 per year as this bill proposes."

The newest idea in sets is the combination of the parasols and scarfs. The parasol is made of silk, while the scarf is developed in chiffon.

This is Fashion Week at Simpson's

The College Girl's Own
Specialty Shop

Exclusive Paris and
New York Fashions



The large garden hat sketched here is a New York Fashion Show hat by Lucille. The wide brim is of leghorn, the soft crown of fashioned silk flowers rest in a bed of green pale yellow gros-grain. Hand fashioned silk flowers rest in a bed of green leaves at the side. For tea, for bridge, this garden hat should frame a lovely youthful face. A \$22.50 model.

Fashion, Kurz, and Ace High copies of French hats are carried exclusively at Simpson's. They create that chic appearance college girls achieve. \$10.00, \$12.50 up.

To wear on a lovely spring day, Easter Sunday, perhaps, this gown of filmy chiffon will delight you. Pink roses climb on a pale green trellis over the entire gown. Four flounces flare at the skirt front. A girdle of roses adds an intriguing touch. This gown is \$50.00.

Afternoon and informal dresses in advance of the mode include many Paris replicas that are so flattering to the university woman's individual style.

Models \$17.50 to \$65.00

Posed by Robye Nichols '25



On this side, as in Paris, the ensemble is the thing. Sketched here is a Simpson model by Golflex. The coat and gown are of golden buckskin kasha. Leopard skin at the collar and cuffs is bordered with bands of black satin and gold braid.

The trend of the season toward elaboration of detail is evidenced here in the shimmering black satin lining of the coat, the gold braid on the gown and the rows of black bone buttons that trim it. A charming model you must see to appreciate. \$145.00.

Other ensembles are \$39.50 to \$120.00.

With Military Ball and the Spring formal season so close at hand, thoughts are naturally concerned with evening gowns.

Today, Yesterday, and Tomorrow are embodied in this picturesque gown of pink chiffon over a pink satin slip. Rows of tiny roses and fine silk lace are sewed on the full skirt. The chiffon parts at the back allowing the tight satin bodice with its rows of rosebuds to be revealed. An entrancing frock, a fairy tale garment. \$85.00.

Gowns for Military Ball and Spring formals are \$27.50, \$39.50 up.



Posed by Maxine Walker '26

Simpson's extends, this Fashion Week, a special invitation to university girls to view the lovely apparel assembled for Spring and Eastertide. There is no need to go to Michigan Avenue or to Fifth Avenue, Simpson's brings the exclusive fashions of both to you. Prices, you will find, are very reasonable.

Sketches by Mike Stiver '25

Spring edition of Varsity Photo News which is issued on all major University occasions.

The Daily Cardinal

Send a copy of the roto section home and let the family see the side lights on the University Expo.

VARSITY PHOTO NEWS

Vol. II No. 4

UNIVERSITY OF WISCONSIN, MADISON, WEDNESDAY, MARCH 25, 1925

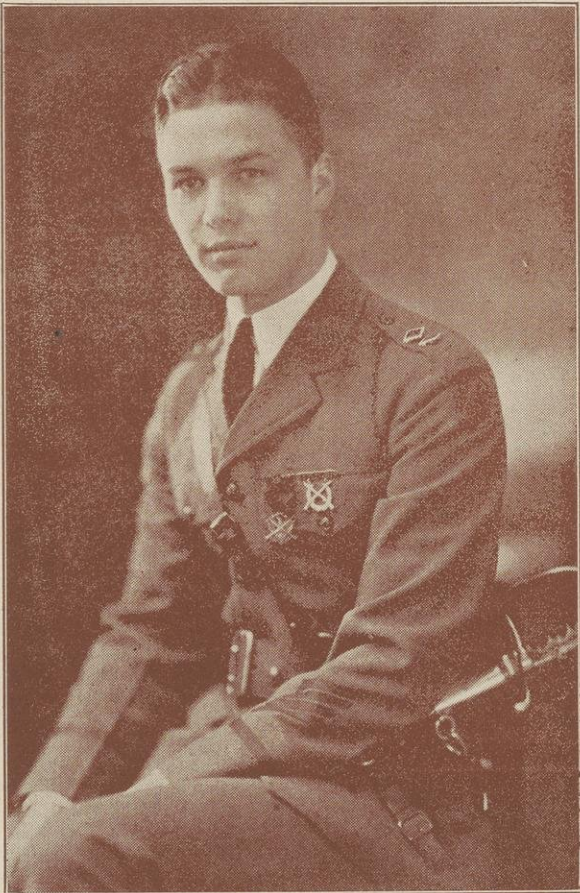
PRICE 10 CENTS

Side Lights on the Exposition Which Will Be Held Immediately Following Spring Vacation

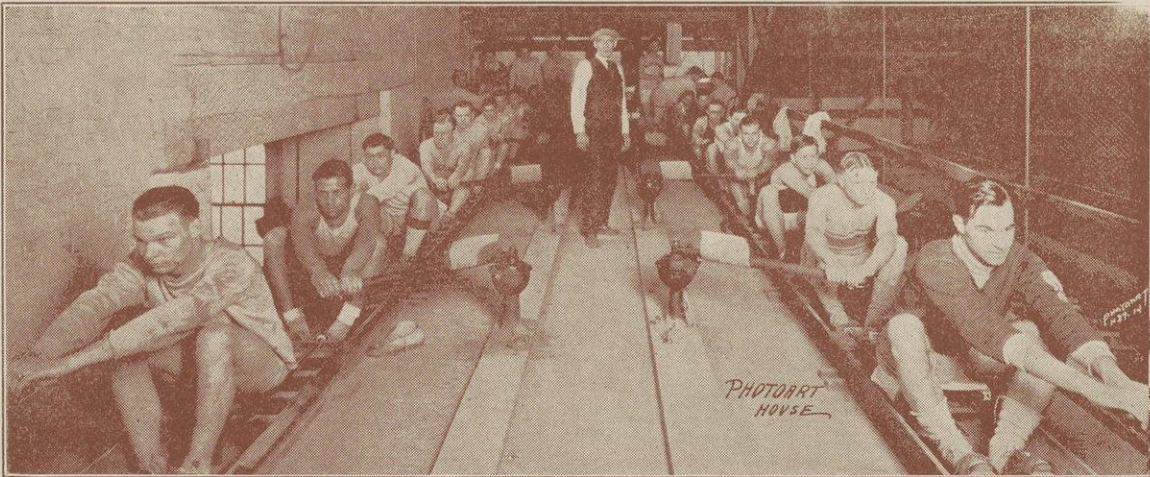


The five students directing the Exposition are (portraits at top of page) center, Gene Tuhtar '25, general manager, left, Fred Gustorf '25, manager of exhibits, right, Alfred Muelenbruch '25 construction manager, (portraits at bottom of page) Orin Wernecke '26, publicity manager and Mary Devine '25, women's arrangements.

Center—Wisconsin's "Old Faithful," large artificial geyser designed and built by Prof. Benjamin Snow, of the physics department, will be one of the principal attractions of the exposition. Prof. Snow is standing beneath his favorite "toy." Upper left, dairy department will demonstrate butter-making with this churn which will be set up and operated in the annex. Upper right, a model of the largest copper mine in the world with a value of \$10,000 as it will appear in the exhibit of the mining engineers. Lower left, these men and women together will all the foreign students, are planning an elaborate display in one corner of the armory floor. Lower right, seeing the actual path of a molecule will be made possible by the physics department which will set up this costly Shimizu-Wilson track apparatus as part of the physics exhibit.

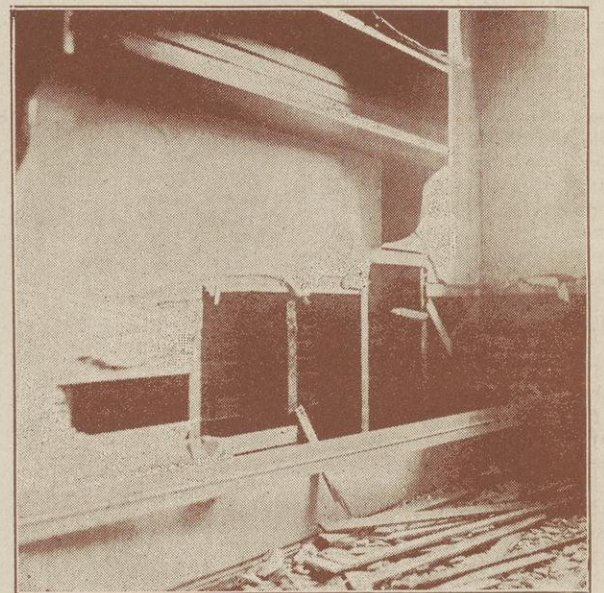


—De Longe's Studio.



—Photo Art House.

Left, Cadet Lieutenant-Colonel Clifford C. Franseen '25, Chief of Staff, and Miss Mary Eldredge '26, who will lead the Military Ball at the State Capitol, April 3. Lower left, the grind before the glory—the crew trains on rowing machines while awaiting the opening of the lakes. Lower right, when the Philosophy department got off some hot stuff. This picture shows part of the damage done to Bascom hall in the recent fire.



—Diemer Studio.

Town And Gown

A GREAT difference between "Town and Gown" lies in the adoption of style and clothes by their respective members. The young business men of the cities accept unquestioningly the dictates of Fashion. The University men as a group dictate their own styles. Our recognition of this peculiar fact has made ours one of the very popular stores for Wisconsin men; our clothes are made for us by houses who tailor particularly for the University clientele.

Suits and Topcoats \$35 to \$65



KARSTENS

22-24 N. Carroll St.



SPRING ENDS THE HOCKEY SEASON—Third row; Jahn, Moelk, Iuf, McCarter, Gore, Eksoln, Pollock, Engalka. Second row; Coach Iverson, Weideman, Allstin, Ludieker, Captain Cross, Jansky, Manirire, Manager Schnover. First Row; Boyer, Woldenberg, Shlecka, Pease, Murphy, Kneebone, Noses, Potter.

—Photo Art House.



Carrying out the traditions that "All Our Girls Are Men, Yet Every One a Lady" Lavern Smith '26 and Byron Rivers '26 are shown in their feminine glory. Both will appear in "Ivan-Ho!", Haresfoot's 1925 production. There will be six Madison performances at the Parkway following the spring vacation next month.



—Photo Art House.

CO-ED WINNERS—left, Doris Cushman '26, center, Camilla Gabel '27, right, Helen Cushman '26, who won honors in the recent ice carnival.

*You can save money
on your*

**Books
and
Supplies**

**Student's Book
Exchange**

652 State St.
W. S. "Bill" Gatewood, Mgr.

—as in previous years
this shop is solidly be-
hind Haresfoot as well
as every other student
enterprise—if we can
serve by sending away
the Haresfoot scores
or records our facilities
are ready for your use

*An announcement of great interest
to all students will soon be made*

The UNIVERSITY MUSIC SHOP Inc.

At 511 State Street Madison, Wisconsin

"The Shop With a Personality"

DEFINITIONS

Horizontal

1. Part of the leg below the knee.
4. Definite article.
6. Loving.
10. On.
11. Personal pronoun.
12. To depart.
13. Egyptian god.
16. To be able.
18. A negation (prefix).
19. Single.
21. That (French).
23. A Color.
24. Receptacle for carrying bricks.
25. Frozen water.
26. A roe (from Scotch).
27. African antelope.
29. Short and pointed.
31. To hurt. (obsolete).
32. Very.
33. Like.
35. A rodent.
36. Very.
37. Senior (abbrev.).
38. Girl's name.
40. Mentally sound.
42. Piece of music composed for eight parts. (plural)
43. Take again.
45. Objective case of second singular personal pronoun.
47. Tardy.
49. Nay.
51. To go (Spanish).
52. American Bible Society (abbrev.).
54. Not (adverb).
55. Like.
56. Extend over.
58. Actor.
60. Do not (contraction).
62. Man's name (uncommon).
63. Sick.
64. Wrath.
66. Past tense of eat.
67. Sailed (abbrev.).
68. A beverage.
69. Voice.
70. Male term of respect.
71. What (interrogative).
73. Yes (Spanish).
74. And (French).
75. 3.1416.
76. One who uses.
77. To be somewhat ill.
78. To hurl.

Vertical

2. Convenient for use.
3. Personal pronoun.
4. Delicate.
5. Practicer of egoism.
7. A Conjunction.
8. Mother-of-pearl.
9. Over.
11. To jeer.
- 12-a. One time.
15. To guide (present 3rd person).
17. Prefix meaning something in relation to air or a gas.
18. Eastern state. (abbrev.)
20. Electrical Engineering degree.
22. Organ for hearing (plural).
28. White crystalline compound contained in blood.
30. A male sheep.
31. To give. (Past tense.)
34. Grimace of contempt.
36. The devil.
38. Perform.
39. Past tense of eat.
40. South East League (abbrev.)
41. Increase till barely sufficient.
44. Assert with emphasis.
46. Man's nickname.
48. Kind of flower (plural).
50. Mineral of hydrous silica.
52. One of the three graces. (Greek mythology.)
53. Snuffle.
55. Against. (prefix).
57. South American mountain chain
58. Beverages.
59. Hastened jogging pace of a horse.
61. A fertile spot in a desert.
63. Personal pronoun.
65. Out (prefix).
72. Personal pronoun.
75. Paternal parent.

Editor's note—The winner of the "Cardinal Cross-word Contest" is a very modest member of the sophomore class who does not wish his name to be made public. Many puzzles were submitted from which this was selected as the best.



The Styles for Spring 1925 by *the* designers for young men

HART Schaffner & Marx tailored these spring clothes of ours; no one else is quite as skillful at the art of styling for young men.

Squarer shoulders, shorter coats, trousers hanging straight and wide from closely fitted waist—these are the style features you'll find in the clothes for young men this spring.

To these conventional style features Hart Schaffner & Marx add something all their own -- an air of dash that comes partly from fine tailoring and partly from the pliant richness of fine woollens.

Olson & Veerhusen Co

Hart Schaffner & Marx clothes