



LIBRARIES

UNIVERSITY OF WISCONSIN-MADISON

The 1944 meletean. Vol. 33 1944

[River Falls, Wis]: [Wisconsin State University, River Falls], 1944

<https://digital.library.wisc.edu/1711.dl/23FQSF6EQ7IJF8P>

This material may be protected by copyright law (e.g., Title 17, US Code).

For information on re-use, see

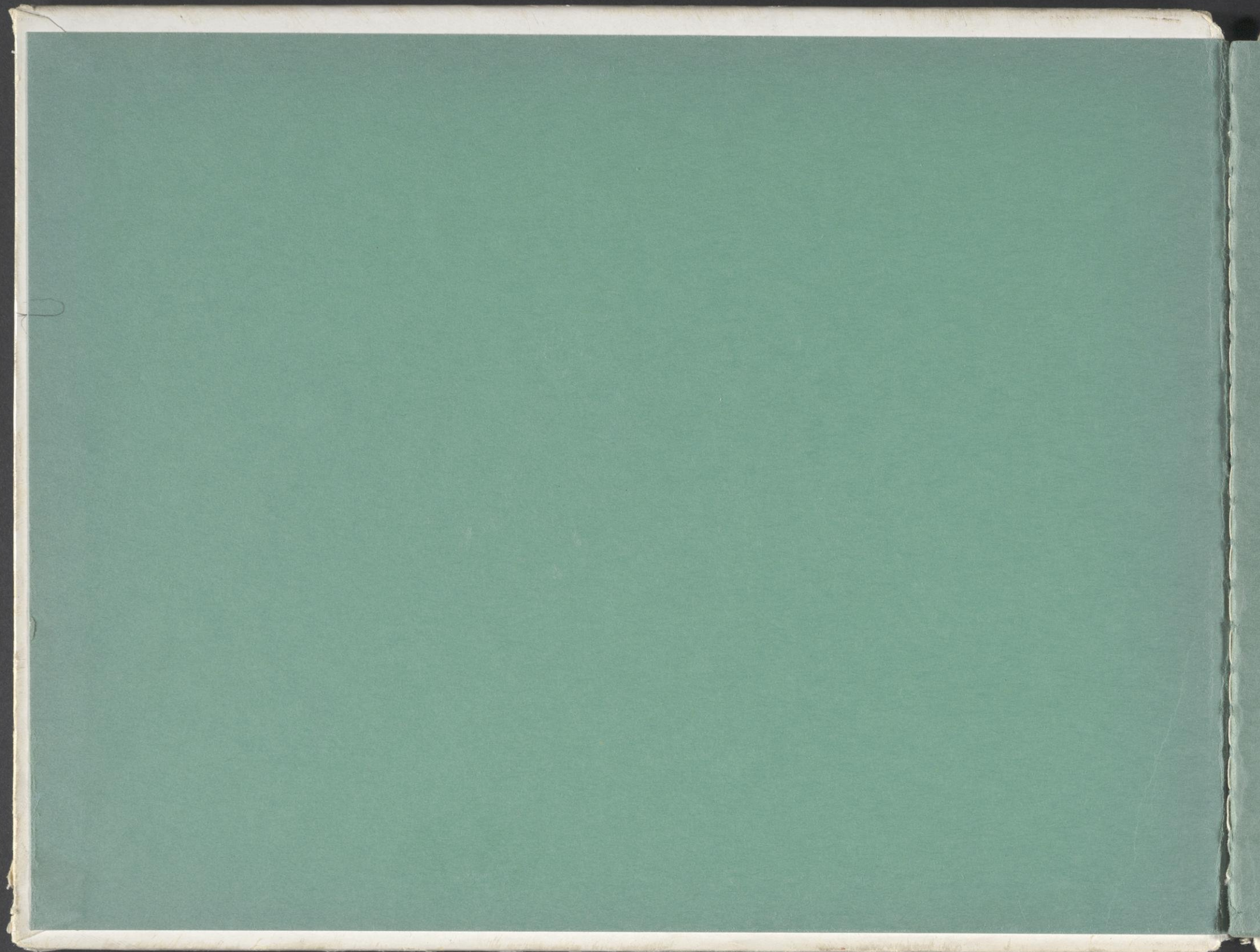
<http://digital.library.wisc.edu/1711.dl/Copyright>

The libraries provide public access to a wide range of material, including online exhibits, digitized collections, archival finding aids, our catalog, online articles, and a growing range of materials in many media.

When possible, we provide rights information in catalog records, finding aids, and other metadata that accompanies collections or items. However, it is always the user's obligation to evaluate copyright and rights issues in light of their own use.



*The
1944
Meletean*





The 1944 Meletean

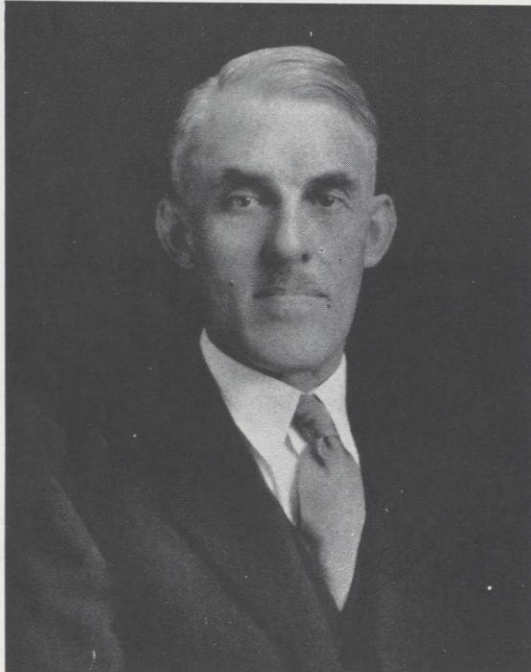
The Meletean comes to you again. Much that it contained in former years is missing. But the spirit of River Falls remains—a spirit of friendliness, high endeavor, and faith in the future. It is this spirit that prompted the publication of the annual this war year.

Published by the students of the
STATE TEACHERS COLLEGE

RIVER FALLS, WISCONSIN

VOLUME 33

THE LIBRARY
WISCONSIN STATE COLLEGE
RIVER FALLS, WISCONSIN



PRESIDENT J. H. AMES

Board of Regents

OFFICERS

EDWARD J. DEMPSEY	-	-	-	-	-	-	President
EDGAR G. DOUDNA	-	-	-	-	-	-	Secretary
JOHN M. SMITH	-	-	-	-	-	-	State Treasurer

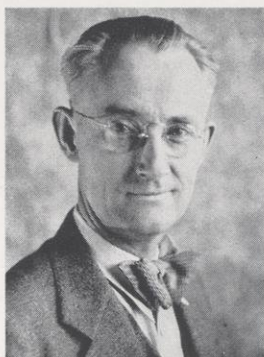
PERSONNEL

EDWARD J. DEMPSEY	-	-	-	-	-	-	Oshkosh
JOHN CALLAHAN, State Superintendent, ex-officio	-	-	-	-	-	-	Madison
MRS. ROBERT C. EBY	-	-	-	-	-	-	Madison
ELTON S. KARRMANN	-	-	-	-	-	-	Platteville
DR. G. N. SUNDQUIST	-	-	-	-	-	-	Superior
JAMES A. RICHARDS	-	-	-	-	-	-	River Falls
PETER J. SMITH	-	-	-	-	-	-	Eau Claire
WILSON DELZELL	-	-	-	-	-	-	Stevens Point
MRS. DORRIS D. MARKS	-	-	-	-	-	-	Milwaukee
DR. R. H. DIXON	-	-	-	-	-	-	Whitewater
ROY C. DAVIDSON	-	-	-	-	-	-	La Crosse



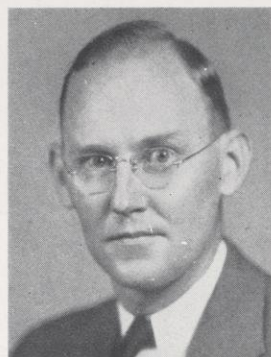
RUDOLPH A. KARGES

Ph.B., Ph.M. University of
Wisconsin
Ph.D. University of Iowa
Chemistry



JAMES P. JACOBSON

B.S. Beloit College
M.S. University of
Wisconsin
Physics



BENJAMIN H. KETTELKAMP

A.B., A.M. University of
Kansas
Ph.D. University of
Pittsburgh
Zoology



CATHARINE LIENEMAN

A.B. University of Nebraska
A.M. Washington
University
Ph.D. University of
Nebraska
Botany



GLEN P. JUNKMAN

Ph.B. University of
Wisconsin
M.S. University of Iowa
Mathematics



CHARLES G. STRATTON

A.B. Michigan Normal
College
Geography, Geology, Dean
of Men

Faculty



JOHN M. MAY

B.S. Kansas State
Agricultural College
M.S. Cornell University
Agricultural Education



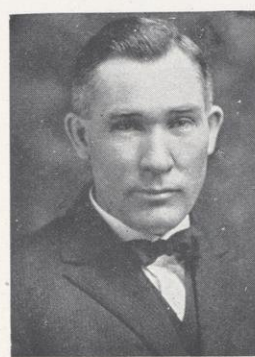
E. J. PRUCHA

B.S., M.S. University of
Wisconsin
Agronomy, Registrar



ARTHUR N. JOHNSON

B.S. University of Wisconsin
M.S. Iowa State
Agricultural College
Animal Husbandry



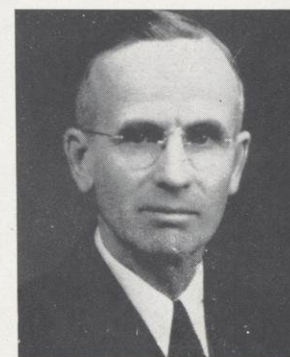
ROY E. SPRIGGS

B.S. Kansas State
Agricultural College
M.S. Iowa State
Agricultural College
Agricultural Engineering



WILLIAM SEGERSTROM

B.S.M. Stout Institute
M.S. University of
Minnesota
Manual Arts



CLYDE B. CAMPBELL

B.S. Iowa State
Agricultural College
M.S. University of
Minnesota
Teacher Training in Agriculture



WALKER D. WYMAN
B.Ed. Illinois State Normal
A.M., Ph.D. University of Iowa
American History and
Government



MAUD A. LATTA
A.B. University of
Wisconsin
A.M. University of Chicago
European History



CARLETON C. AMES
B.S., A.M. University of
Minnesota
Social Science



VERA M. MOSS
A.B. Kalamazoo State
Teachers College
A.M. University of
Michigan
English



ELSIE S. HOFFMAN
B.S. Colorado State College
M.A. University of Denver
Speech and English



GERALD M. MANION
B.S. River Falls State
Teachers College
Physical Education
Director of Athletics

Faculty



IRMA HATHORN
A.B. University of
Minnesota
A.M. Teachers College,
Columbia University
Education, Dean of Women



ERNST JURGENS
A.B., A.M., Ph.D.
University of Iowa
German, Philosophy



MABEL F. ARBUTHNOT
B.A. Milton College
M.A., Ph.D. University of
Wisconsin
Latin, French



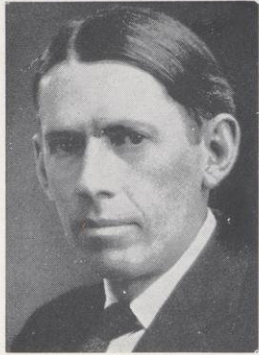
ALBERTA M. GREENE
B.S. Teachers College,
Columbia University
Art



B. LOUISE HILDER
B.S. University of
Minnesota
A.M. Teachers College,
Columbia University
Art in the Training School



O. W. SJOWALL
B.S., M.E. University of
Minnesota
Health and Physical Education



MARVIN D. GEERE
 Pennsylvania Conservatory
 of Music
 Warren Conservatory
 of Music
 Music



INGWELDE PFITZNER
 B.S. University of
 Minnesota
 Music, Band and Orchestra



CARA AMELIA WHARTON
 B. Mus. Gunn School of
 Music and Dramatic
 Arts, Chicago
 Piano



RHEA GIBSON
 A.B. University of
 Wisconsin
 Librarian



MARY BRADLEY
 Library School, University
 of Wisconsin
 Assistant Librarian



AMY FULLER
 B.Ed. River Falls State
 Teachers College
 A.B. in L.S. University of
 North Carolina
 Assistant Librarian

Faculty



RUSSELL JOHNSTON
 A.B. Washington and
 Jefferson College
 A.M. University of
 Minnesota
 Education, Director Teacher
 Training



MABEL L. BRIDGES
 A.B. University of
 Nebraska
 A.M. Teachers College,
 Columbia University
 Elementary Education,
 Geography



GLADYS M. ZAK
 Ph.B. University of Chicago
 Teachers College,
 Columbia University
 Primary Education



MABEL JORSTAD
 Ph.B. University of
 Wisconsin
 A.M. University of
 Minnesota
 Rural Education



NATHALIE DELANDER
 B.S., A.M. University of
 Minnesota
 Secondary Education, Social
 Science



LILLIAN R. HOFFMANN
 B.S. Colorado State
 College
 M.A. University of
 Wyoming
 Secondary Education, English



AUGUSTA M. THOMAS
B.S., M.A. University of
Minnesota
Elementary Education



ADELINE C. PATTON
Ph.B. University of
Wisconsin
Elementary Education



ALICE G. SWANSON
B.Ed. Superior State
Teachers College
Primary Education



FERN SWANKE, R.N.
Fairview Hospital School
of Nursing, Minneapolis,
Minnesota
College Nurse



HELEN JOHNSON
Stenographer



ELIZABETH ELERT
Recorder



ETHEL WEST
Secretary

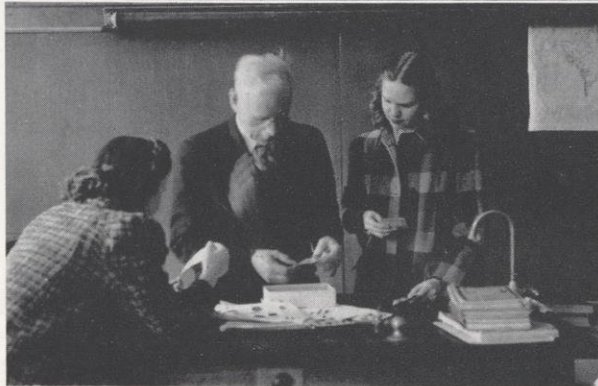
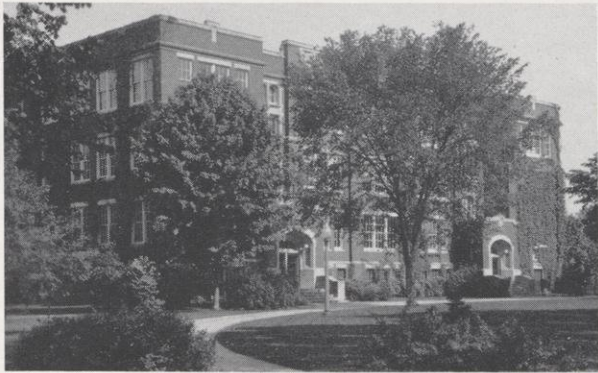


ESTHER MURPHY
Secretary, Training Department

ALMA W. GILBERT
B.S. Kalamazoo State Teachers College
M.S. University of Michigan
Physical and Health Education

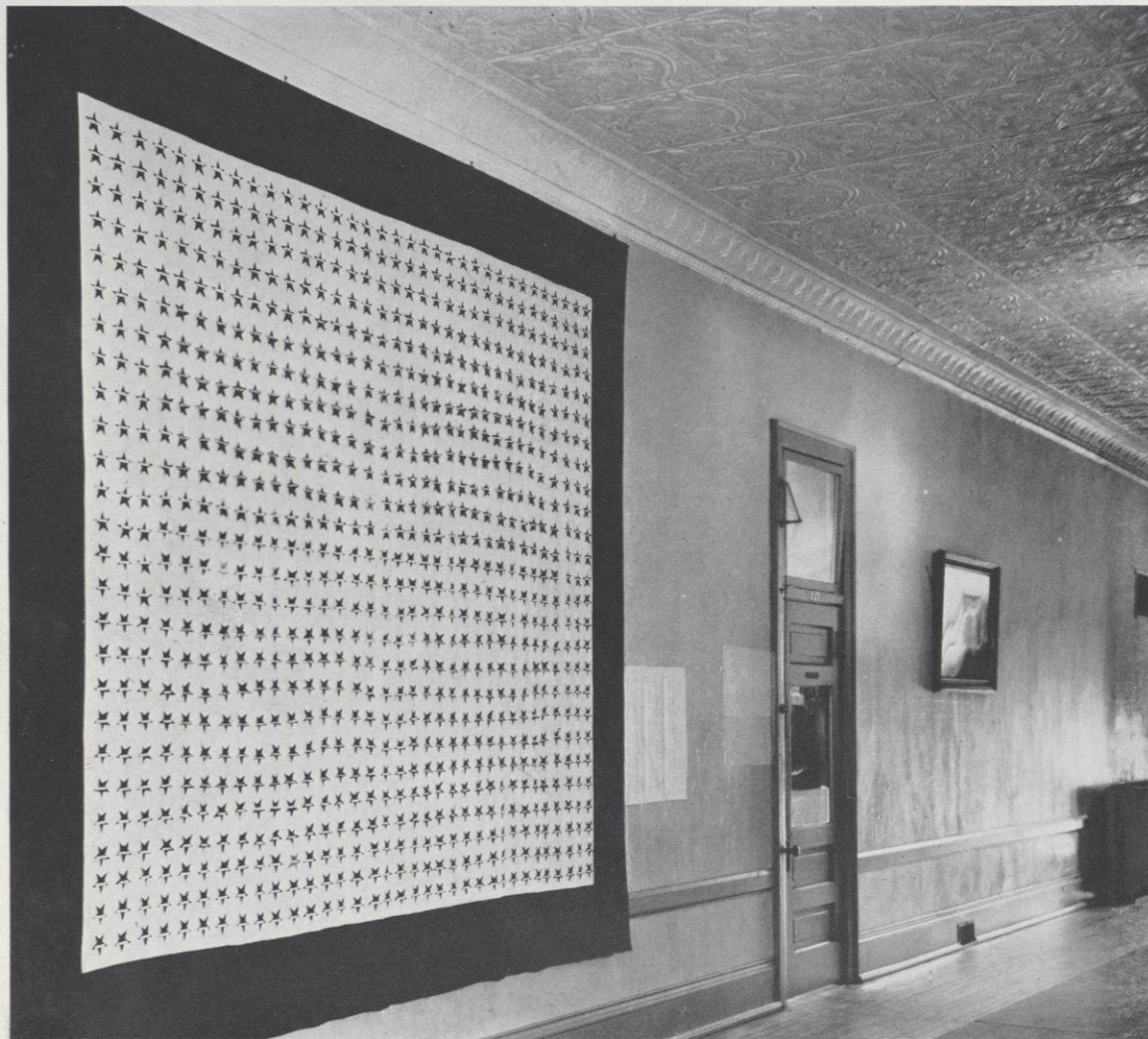
FACULTY IN THE ARMED FORCES
Mary Louise Branstad John G. Mosher
Chester L. Eggert B. J. Rozehnal
Helen Loeb Theodore Setterquist
Justin Williams

LEAVE OF ABSENCE
Margaret Chapman Eide
Melvin Wall



During this war year the faculty and students of River Falls have maintained successfully normal school activities, thereby making their best contribution to their country.

Service Flag



GOLD STARS

Burton Boettcher
Earle Boettcher
Robert Busby
Charles Ganske
Walter Guinn
Eugene Gossen
Voyle Johnson
Robert McCabe
Robert Mraz
Stanley Palm
John Person
Ward Randles
Jerome Sobotta
Keith Solveson
Robert Thoreson
Stanley Torgerson
Frank E. Winterling

Seniors

LEWIS BEER—Chemistry and Mathematics - - - - - **CLINTONVILLE**
University of Wisconsin 1; Oshkosh State Teachers College 2; "R" Club 4; Y.M.C.A. 4; Cabinet 4; Football 4.

LORETTA GOLDEN—Elementary Education, Music, and English - - - - - **ELMWOOD**
A.C.E. 2, 3, 4; Class Secretary-Treasurer 4; Women's Chorus 2, 4; A Cappella Chorus 4; Student Voice 4.

NEIL GOODSPEED—Science and Mathematics - - - - - **CLEAR LAKE**
Masquers 1, 2, 3; "R" Club 3; Football 1, 2, 3; Volleyball 1, 2, 3; "Elmer" 2; "Seven Keys to Baldpate" 2; "Blackout Mystery" 3.

JANE GRONLUND—English, History, and Latin - - - - - **CUSHING**
Language Club 1, 2, 3, 4, Secretary and Treasurer 3; Sigma Chi Sigma 2, 3, 4, Treasurer 3; Y.W.C.A. 1, 2, 3, 4, Cabinet 3, 4; Class Secretary 2; Homecoming Committee 3; Prom Committee 3.

DOLORES HANSON—Elementary Education, Art, and Geography - - - **RIVER FALLS**
A.C.E. 2, 3, 4, Secretary 4; Palette Club 3; Y.W.C.A. 1, 3, 4; Orchestra 4; String Quartet 4; Homecoming Committee 2; Prom Committee 3.

LOIS HARMELING—Elementary Education, Music, and Art - - - - - **BALDWIN**
Palette Club 1, 2, 3, Executive Board 2, Chairman 3; Sigma Chi Sigma 3, 4, Treasurer 4; Y.W.C.A. 1, 2, 3, 4, Cabinet 3, President 4; Midgardians 1, 2, 3, 4, Secretary and Treasurer 3, Program Chairman 4; A Cappella Chorus 1, 2, 3, 4; Student Voice 1, 2; Honor Society 4; Homecoming Committee 2.

JUNE HEALY—Elementary Education, English, and Geography - - - **RIVER FALLS**
Masquers 1, 2, 3, 4, Treasurer 3, President 4; Y.W.C.A. 1; Midgardians 2, 3, 4, President 4; Homecoming Committee 3; "Night Must Fall" 1; "Elmer" 2; "Thank You, Doctor" 2; Student Senate 4.

ELMER HEDLUND—History, Science, and English - - - - - **SIREN**
F.F.A. 1; Y.M.C.A. 1, 2, 3, 4, Cabinet 3, 4; Pi Kappa Delta 4; Intramural Sports 1, 2, 3; Debate 2, 3, 4; Student Voice 3, 4; 1944 Meletean; Homecoming Committee 3; Prom Committee 3; Student-Faculty Relations 4; Student Senate 4.

BERNICE INMAN—Elementary Education, History, and English - - - - - **CAMERON**
Bob Jones College 1; Barron County Normal 2, 3; A.C.E. 4; Honor Society 4; Language Club 4; Palette Club 4; Class Vice-President 4; A Cappella Chorus 4.

PATRICIA RYAN—History, English, and German - - - - - **HUDSON**
Honor Society 3, 4; Sigma Chi Sigma 2, 3, 4, Vice-President 3, President 4; Language Club 2, 4; Class Treasurer 1; 1944 Meletean, Editor; Homecoming Committee 2, 3; Student Senate 4; Who's Who In American Colleges 4.

DOROTHY SAMPSON—Elementary Education, Geography, and English - **RIVER FALLS**
W.A.A. 1, 2, 3, 4; Y.W.C.A. 1, 2, 3, 4; Class President 4; Basketball 1, 2, 3, 4; Badminton 4; Soccer 1, 2, 3; Volleyball 1, 2, 3, 4; Women's Chorus 2; Homecoming Committee 4; Student Senate 4.

MARGARET SIMONSON—English, Music, and History - - - - - **HUDSON**
Language Club 2, 4; Y.W.C.A. 1, 2, 3, 4, Cabinet 3, 4; Band 1, 2, 3, 4; Co-ed Band 1, 2; Orchestra 1, 2, 3, 4; Prom Committee 3; War Council 3, Secretary 3.

NORENE WELDON—Elementary Education, History, and Geography - - - **PLUM CITY**
Palette Club 1, 2, 3; Midgardians 2, 3, 4; W.A.A. 1; Y.W.C.A. 1, 2, 3, 4; Class Treasurer 3.

CAROL WHITAKER—English, History, and Music - - - - - **CHETEK**
Sigma Chi Sigma 3, 4; Y.W.C.A. 1, 2, 3; A Cappella Chorus 3; Student Voice 1, 2, 3; Co-editor 3; Prom Committee 3.



SENIOR OFFICERS

DOROTHY SAMPSON	-	-	-	-	-	President
BERNICE INMAN	-	-	-	-	-	Vice-President
LORETTA GOLDEN	-	-	-	-	-	Secretary-Treasurer



JUNIOR OFFICERS

BETTY AASTERUD - - - - - President
 WILBUR LARSON - - - - - Vice-President

Juniors

BETTY AASTERUD—English, Latin, and History - - - - - **SPRING VALLEY**
 Honor Society 3; Language Club 2, 3; President 2; Sigma Chi Sigma 2, 3; W.A.A. 1; Y.W.C.A. 1, 2, 3; Cabinet 3; Class President 3; Debate 2; Student Voice 1, 2, 3; Co-editor 3; Student Senate 3; Who's Who in American Colleges 3.

EDWARD AUSDERAU—Agricultural Education, Science - - - - - **COLFAX**
 Platteville State Teachers College 1; Honor Society 2, 3; Y.M.C.A. 3; Football 3; Intramural Sports 2, 3.

ALICE BOARDMAN—English, History, and French - - - - - **NEW RICHMOND**
 Masquers 2, 3, 4; Y.W.C.A. 1, 2, 3, 4; Cabinet 2, 3, 4; "Lost Horizon" 2; "Black Out Mystery" 2; "Fireman Save My Child" 2; "Cry Havoc" 3; Co-ed Band 1; Party Committee 3, 4.

EDNA BRIESEMEISTER—Elementary Education, Music, and English - - - - - **ALMENA**
 Midgardians 2, 3; Y.W.C.A. 1, 2, 3; Orchestra 2, 3; A Capella 3; Women's Chorus 1.

LA VERN DAHLBY—Pre-Professional - - - - - **OSSEO**
 Die Deutsche Gesellschaft 1; Homecoming Committee 1; Intramural Sports 1.

MARGARET DAVIS—Elementary Education, Biology, and Art - - - - - **HAYWARD**
 Northland College 1, 2; A.C.E. 3; Women's Chorus 3; Sextet 3; Student Voice 3.

LORRAINE ERICKSON—Elementary Education, Art, and Geography - - - - - **PLUM CITY**
 Honor Society 3; Palette Club 2; Y.W.C.A. 3; Midgardians 2, 3; Program Chairman 3; Women's Chorus 2; Homecoming Committee 2.

JEAN ERLANDSON—English, History, and French - - - - - **RIVER FALLS**
 Masquers 2, 3; W.A.A. 1, 2; Y.W.C.A. 1; "Lost Horizon" 2; "The Kleptomaniac" 3; Homecoming Committee 2.

CAROL FINSTAD—Mathematics and Science - - - - - **KINGSDALE, MINNESOTA**
 Mathematics Club 1, 2, 3; Secretary 2; President 3; Sigma Chi Sigma 2, 3; Y.W.C.A. 2, 3; 1944 Meletean.

ROBERT HAILE—Agricultural Education, Manual Arts, and Science - - - - - **KNAPP**
 F.F.A. 2; Masquers 1; Y.M.C.A. 1, 2, 3; Cabinet 2; Debate 1; Band 1.

ALFRED HARTUNG—Agricultural Education and Science - - - - - **PLUM CITY**

ANNA HENRIKSEN—Elementary Education, English, and Arts - - - - - **LUCK**
 Grand View College 1; Honor Society 2, 3; Palette Club 2, 3; Secretary 3; Y.W.C.A. 2, 3; Midgardians 2, 3; Secretary 3; Homecoming Committee 3.

Juniors

MERLE HUNTER—Elementary Education, History, and English - - - - HUDSON
A.C.E. 1, 2, 3; Palette Club 3; Y.W.C.A. 1, 2, 3; W.A.A. 1, 2; Co-ed Band 1.

REUBEN JOHNSON—Agricultural Education and Science - - - - GRANTSBURG
F.F.A. 1, 2; "R" Club 3; Y.M.C.A. 1, 2, 3, Treasurer 3; Football 3; Intramural Sports 1, 2;
1944 Meletean; Party Committee 3.

EDITH KING—Elementary Education, English, and History - - - - ARKANSAS
Honor Society 3; Rural Life Club 1.

DORIS LANDBERG—English, History, and Geography - - - - GLENWOOD CITY
Sigma Chi Sigma 2, 3; Y.W.C.A. 1, 2, 3; Women's Chorus 2.

JEAN LARSON—Elementary Education, Music, and Art - - - - SPRING VALLEY
A.C.E. 1, 2, 3, President 3; Sigma Chi Sigma 2, 3, Secretary 3; Y.W.C.A. 1, 2, 3, Cabinet 3;
Orchestra 1, 2, 3; Band 1, 2, 3; Women's Chorus 1, 3; 1943, 1944 Meletean; Homecoming Com-
mittee 2, 3.

WILBUR LARSON—Chemistry and Mathematics - - - - DOWNING
Mathematics Club 1, 2; "R" Club 3; Y.M.C.A. 1, 2, 3, Vice-President 3; Class Vice-President 3;
Football 3; Volleyball 1, 2; Basketball 1, 2.

MARION LYNCH—Elementary Education, Music, and Literature - - - - AMERY
A.C.E. 3; Masquers 3; Y.W.C.A. 2, 3; "Cry Havoc" 3.

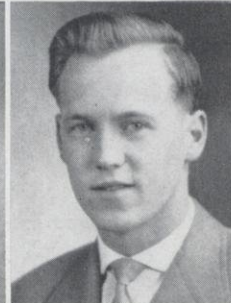
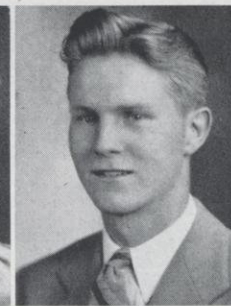
NONA McCOLLOW—Elementary Education, Art, and Geography - - - - RIVER FALLS
Masquers 1, 2, Secretary 2; Sigma Chi Sigma 2; W.A.A. 1; Midgardians 2; "Cry Havoc" 2;
Student Voice 1, 2, Co-editor 2; Student-Faculty Relations Committee 2; Student Senate 2,
Vice-President 2.

VIRGINIA STRONKS—Elementary Education, Music, and Art - - - - BALDWIN
A.C.E. 1, 2, 3, Treasurer 2, 3; Honor Society 1, 2, 3; Palette Club 1; Sigma Chi Sigma 2, 3;
W.A.A. 1; Y.W.C.A. 1, 2, 3, Cabinet 2, Treasurer 3; Class Treasurer 2; Band 1, 2; Co-ed Band 1;
Student Senate 2, 3, President 3; Student-Faculty Relations Committee 3; War Council 2, 3;
Student Voice 1; Who's Who In American Colleges 3.

CORRINE SWANSON—English, History, and French - - - - GLENWOOD CITY
Y.W.C.A. 1, 2, 3; Sigma Chi Sigma 2, 3, Vice-President 3; Student Voice 2, 3, Co-editor 3;
Student Senate 3, Treasurer 3; Party Committee 3.

DELOISE TRINDLE—Elementary Education, Art, and English - - - - NEW RICHMOND
Midgardians 2, 3; Palette Club 2, 3, President 3; Y.W.C.A. 1, 2, 3.

GERALDINE WENZEL—Science, Social Science, and Mathematics - - - - RIVER FALLS
Whitewater State Teachers College 2; W.A.A. 1; Honor Society 3.



JUNIOR OFFICERS

JEAN LARSON	-	-	-	-	-	Secretary
NORENE WELDON	-	-	-	-	-	Treasurer



Sophomores

MADOLYN ANDERSON—Elementary	- - - - -	MAIDEN ROCK
ELAINE BALL—Rural	- - - - -	NEW RICHMOND
FRANCES BERGER—Elementary	- - - - -	BARRON
LOIS BERND—Secondary	- - - - -	NEW RICHMOND
FAYE BIGNELL—Rural	- - - - -	PEPIN

ELLEN BROOKE—Rural	- - - - -	SPRING VALLEY
MARIE CHRISTENSON—Elementary	- - - - -	AMERY
GRACE CHURCHILL—Elementary	- - - - -	ROCK ELM
BETTY DODGE—Elementary	- - - - -	RIVER FALLS
AUDREY GILSTAD—Rural	- - - - -	SPRING VALLEY

MARJORIE GILSTAD—Rural	- - - - -	SPRING VALLEY
LOUELLA HALLING—Elementary	- - - - -	RIVER FALLS
DOROTHY HAMMELMAN—Rural	- - - - -	DEER PARK
MARJORIE HANSEN	- - - - -	BALSAM LAKE
BARBARA HARRIS—Secondary	- - - - -	RIVER FALLS

MARY HAWKINS—Elementary	- - - - -	ROBERTS
ELEANOR HAYES—Secondary	- - - - -	RICE LAKE
CALVIN HOPHAN	- - - - -	PLUM CITY
ANNA MAE HOSEID—Elementary	- - - - -	RIVER FALLS
EVELYN HUMPHREY—Rural	- - - - -	SPARTA

MAXINE HUPPERT—Elementary	- - - - -	HAGER CITY
FELICE JORSTAD—Elementary	- - - - -	HUDSON
MARIE KLETT—Secondary	- - - - -	PRESCOTT
GLADYS LEADHOLM—Elementary	- - - - -	AMERY
AUDREY LUBERG—Elementary	- - - - -	RIVER FALLS

SOPHOMORE OFFICERS

KATHRYN SNEESBY	- - - - -	President
BARBARA HARRIS	- - - - -	Vice-President

Sophomores

MYRTLE MARKEE—Elementary	- - - - -	AMERY
JOYCE MEIER—Rural	- - - - -	PRESCOTT
LOUISE MELBYE—Secondary	- - - - -	CAMERON
MARILYN MERCORD—Secondary	- - - - -	PRESCOTT
LOIS MEULEMANS—Secondary	- - - - -	GLENWOOD CITY

JEAN MORGAN—Unclassified	- - - - -	RIVER FALLS
EMOGENE NELSON—Rural	- - - - -	RIVER FALLS
HELEN OLESKOW—Secondary	- - - - -	WEYERHAUSER
MARY PAULSON—Secondary	- - - - -	CLEAR LAKE
RUTH PEDERSON—Rural	- - - - -	WILSON

ELIZABETH SAMPSON—Unclassified	- - - - -	RIVER FALLS
SHIRLEY SCHILLBERG—Elementary	- - - - -	OSCEOLA
ARDITH SMITH—Rural	- - - - -	HUDSON
KATHERINE SMITH—Rural	- - - - -	WILSON
KATHRYN SNEESBY—Secondary	- - - - -	BERLIN

MARY SOMSEN—Elementary	- - - - -	BALDWIN
OLIVE SUMMERS—Rural	- - - - -	SIREN
FAY SWANKE—Elementary	- - - - -	NEW RICHMOND
FELICIA TURNER—Rural	- - - - -	CENTURIA
GERALD WALLEN—Secondary	- - - - -	RIVER FALLS

SHIRLEY WIFF—Secondary	- - - - -	SPRING VALLEY
LEONA WOODS—Rural	- - - - -	WEBSTER

SOPHOMORE OFFICERS

MARY SOMSEN	- - - - -	Secretary
GERALD WALLEN	- - - - -	Treasurer





Freshmen

JOAN AAMODT—Unclassified	- - - - -	MADISON
SHIRLEY ANDERSON—Rural	- - - - -	RIVER FALLS
BEVERLEY ASKEY	- - - - -	NEW RICHMOND
HELEN BURKE—Rural	- - - - -	PLUM CITY
ELEANOR BUSSE—Unclassified	- - - - -	NEW RICHMOND

ELAINE CLOUTIER—Rural	- - - - -	NEW RICHMOND
EVELYN COCHRAN—Rural	- - - - -	ROBERTS
BETTY JANE COWAN—Elementary	- - - - -	RIVER FALLS
LOUIS DANIEL—Agriculture	- - - - -	GRANTSBURG
BETH DAVIS—Unclassified	- - - - -	HAYWARD

DENISE DEMULLING—Elementary	- - - - -	WOODVILLE
ARNOLD FEILER	- - - - -	ELMWOOD
MARY FINKE—Rural	- - - - -	SPRING VALLEY
VERA FINSTAD—Secondary	- - - - -	RIVER FALLS
LOIS MAE FOSTER—Unclassified	- - - - -	NEW RICHMOND

IRENE FROKJER—Unclassified	- - - - -	CENTURIA
JANE GIBSON—Rural	- - - - -	CYLON
ELOISE GILBERTSON—Rural	- - - - -	CLEAR LAKE
RITA GILLIS—Rural	- - - - -	GLENWOOD CITY
DOROTHY GRANT—Rural	- - - - -	SPRING VALLEY

MARVEL HAGLUND—Secondary	- - - - -	MAIDEN ROCK
JANET HAILE—Unclassified	- - - - -	KNAPP
VIOLA HALVORSON—Elementary	- - - - -	RIVER FALLS
YOU LAN HANSON—Elementary	- - - - -	BALDWIN
FRANCES HARRIGAN—Rural	- - - - -	MAIDEN ROCK
GLEN HENDRICKSON—Secondary	- - - - -	RIVER FALLS

FRESHMAN OFFICERS

KENNETH DIETZLER	- - - - -	President
PHYLLIS MYHRE	- - - - -	Vice-President

Freshmen

MARY HENNESSY—Rural	- - - - -	CYLON
EVELYN HOFFMEYER—Unclassified	- - - - -	ROBERTS
HELEN HOLT—Rural	- - - - -	ELMWOOD
LEONARD HONSTAD—Unclassified	- - - - -	STANLEY
EILEEN HOVDA—Rural	- - - - -	CLEAR LAKE

MAXINE HUENINK—Unclassified	- - - - -	BALDWIN
HILDEGARDE HUPPERT—Unclassified	- - - - -	RIVER FALLS
RUTH HURTH—Rural	- - - - -	CADOTT
DORIS JACKELLEN—Rural	- - - - -	GLENWOOD CITY
ALBERTINE JACOBSON—Rural	- - - - -	WOODVILLE

MARION JACOBSON—Elementary	- - - - -	HAMMOND
DOROTHY JENNINGS—Unclassified	- - - - -	RIVER FALLS
ARLIS JOHNSON—Rural	- - - - -	WILSON
EVADINE JURGENSON—Unclassified	- - - - -	ELLSWORTH
FRANKIE KELLY—Unclassified	- - - - -	RIVER FALLS

ALICE KIEKHOFER—Rural	- - - - -	NEW RICHMOND
MARY KIRCHNER—Rural	- - - - -	RIVER FALLS
JEAN KOLLING—Rural	- - - - -	RIVER FALLS
ELSIE MAE LaFAVE—Rural	- - - - -	MANITOWISH
LOIS LANDBERG—Elementary	- - - - -	GLENWOOD CITY

KENNETH LANDRY	- - - - -	NEW RICHMOND
MAE ONA LEE—Rural	- - - - -	PRAIRIE FARM
MARJORY LYNCH—Secondary	- - - - -	NEW RICHMOND
ROBERT McCARDLE—Secondary	- - - - -	SPRING VALLEY
AUDREY McCLEARY—Rural	- - - - -	MAIDEN ROCK
HOPE METCALF—Secondary	- - - - -	ARKANSAS

FRESHMAN OFFICERS

RALPH GAVIC	- - - - -	Secretary
MAXINE WURTZ	- - - - -	Treasurer





Freshmen

PHYLLIS MYHRE—Unclassified	- - - - -	STANLEY
PATRICIA NELSON—Elementary	- - - - -	CUMBERLAND
GERALD NESS—Unclassified	- - - - -	RIVER FALLS
LaVERNE OLSON—Agriculture	- - - - -	BARRON
MILLEN OLSON—Unclassified	- - - - -	CHETEK

BETTY PETERSON—Rural	- - - - -	BALDWIN
JAMES REDMOND—Agriculture	- - - - -	ARPIN
REBECCA REES—Secondary	- - - - -	ROCK SPRINGS, WYOMING
LOUELLYN REISS—Secondary	- - - - -	DEER PARK
PEARL RYDBERG—Unclassified	- - - - -	SHELL LAKE

DONALD SANDVE—Secondary	- - - - -	TURTLE LAKE
DORIS SCHROEDER—Rural	- - - - -	PRESCOTT
MILLICENT SKONE—Secondary	- - - - -	CUSHING
JOYCE STRAUB—Elementary	- - - - -	ELLSWORTH
SYLVA SWENSON—Elementary	- - - - -	SPRING VALLEY

GLEN TEASDALE—Unclassified	- - - - -	RIVER FORREST, ILLINOIS
NANCY TEUBERT—Unclassified	- - - - -	RIVER FALLS
DONALD UBBELOHDE—Unclassified	- - - - -	NEW RICHMOND
LEONA VON KUSTER—Elementary	- - - - -	ROBERTS
MARGUERITE WAGNER—Rural	- - - - -	SPRING VALLEY

JANIS WALTON—Rural	- - - - -	DOWNING
ARTHUR WATERS—Agriculture	- - - - -	ROSENDALE
EUGENE WIRZ—Secondary	- - - - -	RICE LAKE
LEONA WOHLK—Elementary	- - - - -	ALMENA
MAXINE WURTZ—Unclassified	- - - - -	ELMWOOD



Larson, Hedlund, Ryan, Johnson.



Halling, Swanson, Nelson, Aasterud, McCollow, Cuppernull.

The 1944 Meltean

Editor-in-Chief	- - - - -	Patricia Ryan
Associate Editor	- - - - -	Jean Larson
Business Manager	- - - - -	Elmer Hedlund
Assistants	- - - - -	Carol Finstad, Reuben Johnson
Faculty Adviser	- - - - -	Maud A. Latta

The Student Voice

Editors-in-Chief	- Nona McCollow, Corrine Swanson, Betty Aasterud
Sports Editor	- - - - - Bob McCardle
Feature Writers	—Irene Frokjer, Audrey Luberg, Jean Erlandson, Joan Aamodt, Elmer Hedlund
News Writers	—Kay Sneesby, Marge Lynch, Louise Melbye, Mary Paulson, Lois Landberg, Loretta Golden, Frances Berger, Madolyn Anderson, Barbara Harris
Business Manager	- - - - - Louella Halling
Faculty Adviser	- - - - - Walker D. Wyman



Football 1943

Back Row: Assistant Coach Sjowall, Anderson, Johnson, A. Feiler, Beer, Wise, Coach Manion.
Middle Row: C. Feiler, McCardle, Larson, Wirz, Beyl, Goodspeed, Ausderau.
Front Row: Hophan, Hartung, Ubbelohde, Dopkins, Hendrickson.

The tradition of an active athletic department at River Falls was upheld throughout the 1943-44 season because of the good participation in sports by the few students enrolled and the efforts of Coach Manion to keep the ball rolling. With all the other schools in the conference and many other schools throughout the country dropping sports, River Falls still carried on despite the difficulty of scheduling games. Football and basketball became a part of our physical fitness program and resulted in a very successful season.

One major and one minor letterman returned, and an additional seventeen men made up the football squad. This was something of a record because this number represented over half the fellows in school. However, there were still not enough fellows for scrimmage or replacements, thus adding to the problems of the Falcons' Coach.

The Falcons traveled to Northfield for their first encounter and won the much needed confidence by defeating the Oles by a 20-12 count. River Falls received the opening kickoff, and in a sustained

drive scored the first touchdown of the season. Wickman, Feiler, and Johnson each counted once, and Wickman converted twice.

The next two games were played with a light but determined Red Wing Training School eleven. The Falcons scored easily to win, 40-0 and 26-0, bringing the record to three wins and no defeats.

The last and most highly prized game of the season was the homecoming game with the fast, aggressive Oles. The Falcons gave the home crowd a thrill in the opening minutes when the Oles' line was split wide open and fullback Feiler sprinted 79 yards for a touchdown. Feiler crossed the goal two more times, and the Falcons won, 19-0. The entire team worked as a unit to hold St. Olaf to a minimum of yards, at the same time developing a tremendous offensive punch.

The regular starters were: C. Feiler and Shock, ends; McCardle and Goodspeed, tackle; Beyl and Larson, guards; Wirz center; Johnson, quarterback; Wickman, left halfback; Wise, right halfback; and A. Feiler, fullback. However, each member of the squad played in every game.

Basketball

1943-1944



Back Row: McCardle (Manager), Teasdale, Wirz, Landry, Coach Manion.
Front Row: C. Most, R. Most, De Long, Feiler, Wynveen, Wise.

The opening call for basketball was answered by eleven freshmen. Without a letterman on the squad there was ample reason to doubt a favorable outcome of the season. This doubt, however, was quickly erased by a smashing 57-20 victory over Macalester on the Mac's floor, followed by two more wins before the Christmas recess.

The first game of the season to be dropped was with Hamline at Hamline. This game was played on the third day after vacation and the Falcons had had only two light workouts. We played St. Olaf the same week and suffered a second setback, 34-27, after having defeated the Oles in the game before Christmas.

The Falcons then returned home to win two more games, the Navy Fliers, a service team composed of former college stars, 49-32, and Macalester, 64-24. This new string was once again broken when River Falls played Concordia and the Navy Fliers away from home, losing the first, 57-49, and the second, 51-44. Upon returning home the Falcons defeated the professional Negro team, the New York Col-

legians, before the largest home crowd of the year by the wide margin of 54-43. They won easily on their next two games over Bethel Junior College, 61-45, and the Navy Selection Board, 66-33. The highlight of the season was the Eau Claire game. The Falcons overcame a 17-point deficit in a hotly played and evenly contested game to win, 50-43.

The last home game of the season was with Bethel Junior College. The Falcons romped to an easy 62-27 win. This gave the Falcons a clean slate in their eight home games. In the last game of the season River Falls defeated Eau Claire, 43-38, in a nip and tuck battle played at Eau Claire.

Six-foot-six Nate DeLong paced the Fallsmen all season for a fifteen-game average of 20.7 points per game for a total of 310 points. Wynveen placed second with a 142-point total, followed by Charlie Most with a 120-point total. Every man on the team was essential, however, because of the small number, and each did his part to carry the season to a successful completion. Cal Feiler and Jerry Anderson were unable to finish the season, as they were called into service.

Awards Voted by the Athletic Council in Football for the 1943 Season

LETTERS			NUMERALS
Anderson	C. Feiler	McCardle	Dopkins
Ausderau	Goodspeed	Shock	Hophan
Beyl	Hendrickson	Wickman	Hartung
Beer	Johnson	Wirz	Ubbelohde
A. Feiler	Larson	Wise	

RESULTS OF THE SEASON

River Falls.....	20	St. Olaf	12
River Falls.....	40	Red Wing Training School.....	0
River Falls.....	26	Red Wing Training School.....	0
River Falls.....	19	St. Olaf	0
	<hr/> 105		<hr/> 12

Awards Voted by the Athletic Council in Basketball for the 1943 - 1944 Season

LETTERS		NUMERALS
DeLong	Wirz	Dandry
Feiler	Wise	Teasdale
C. Most	Wynveen	
R. Most		

RESULTS OF THE SEASON

River Falls.....	57	Macalester	20
River Falls.....	53	St. Olaf	36
River Falls.....	47	Concordia	35
River Falls.....	40	Hamline	51
River Falls.....	27	St. Olaf	34
River Falls.....	49	Wold Chamberlain N. A. S.	32
River Falls.....	64	Macalester	24
River Falls.....	49	Concordia	57
River Falls.....	54	New York Collegians	43
River Falls.....	61	Bethel J. C.	45
River Falls.....	66	Navy Aviation Selection Board ..	33
River Falls.....	50	Eau Claire	43
River Falls.....	62	Bethel J. C.	27
River Falls.....	45	Eau Claire	38
River Falls.....	44	Wold Chamberlain N. A. S.	51

768

569

BASKETBALL SCORING

	Games	Field Goals	Free Throws	Fouls	Points	Average per game
DeLong	15	27	56/100	47	310	20.7
Wynveen	15	52	38/55	25	142	9.5
C. Most	15	50	20/34	12	120	8.0
R. Most	15	35	12/24	14	82	5.5
A. Feiler	15	17	11/22	42	45	3.0
Wirz	15	11	3/5	25	25	1.7
Wise	13	7	2/5	13	16	1.2
*C. Feiler	3	6	0/1	8	12	4.0
Teasdale	4	4	0/2	0	8	2.0
*Anderson	6	3	2/5	9	8	2.6
Landry	4	0	0/1	0	0	0.0
	<hr/> 312	<hr/> 144/254	<hr/> 195	<hr/> 768	<hr/> 51.0	

* Members who did not complete the season.

Women's Athletic Association



Badminton
Table Tennis



Back Row: Anderson, Gilbert (Coach), Sampson.
Front Row: Morgan, P. Nelson, Davis, E. Nelson.

OFFICERS

KATHRYN SNEESBY - - - - President
JEAN MORGAN - - - - Vice-President
GLADYS LEADHOLM - - Secretary-Treas.
ELEANOR HAYES - - - Point Secretary
MRS. GILBERT - - - - - Adviser



Hayes, Leadholm, Morgan



College Masquers

OFFICERS

JUNE HEALY - - - - - President
 LOIS BERND - - - - - Vice-President
 NONA McCOLLOW - - - - - Secretary
 JEAN ERLANDSON - - - - - Treasurer
 CARLETON C. AMES - Adviser and Coach

MEMBERS

Lois Meulemans
 Maxine Huppert
 Lois Bernd
 June Healy
 Jean Erlandson
 Mary Frances Hawkins
 Elaine Ball
 Alice Boardman
 Nona McCollow
 Marilyn Mercord
 Marjorie Hansen
 Rita Gillis
 Millicent Skone
 Maxine Huenink
 Denise Demulling
 Vera Louise Finstad
 Dorothy Jennings
 Evelyn Cochran
 Viola Halvorson
 Marge Lynch
 Marion Lynch



CRY HAVOC

College Masquers

It was obvious at the first Masquer meeting in September that difficulties lay ahead for the organization. Only eight old members were in school. New members, mostly freshmen, brought the membership to 21, the smallest membership Masquers has known in years. More trouble was indicated by the fact that the sterner sex was conspicuous by its absence.

In spite of these handicaps, Masquers has enjoyed one of its most successful years. Marilyn Mercord as head of the program committee has given us some of our most worthwhile programs. Two out-of-town trips were conducted; one to Minneapolis to see Boris Karloff in *ARSENIC AND OLD LACE*, and one to Macalester College to see their production of *CRY HAVOC*.

It was decided early in the year to restrict the dramatic production program in view of the limited membership. In the fall term the one-act play, *THE KLEPTOMANIAC*, was presented as an assembly program and very well received. Only one full-length production was undertaken. Allan Kenward's play about nurses on Bataan, *CRY HAVOC*, was offered to the public on February 29. A gripping and timely war play, *CRY HAVOC* received an excellent audience reaction and gratifyingly turned a neat profit into the Masquers' treasury.

In connection with this production a reception was held in the Social room after the final curtain with coffee and doughnuts served to members of the audience and the cast by a Masquer committee. All seemed to enjoy this departure and efforts will be made to make it a regular thing.

Iota Beta, the local group of Alpha Psi Omega, honorary dramatic fraternity, has not been very active this year, because all of last year's charter members with the exception of the director, have left the campus. In recognition of their contributions to the dramatic program on this campus, Lois Bernd, Alice Boardman, Jean Erlandson, Elaine Ball, Nona McCollow and Marilyn Mercord have been elected to membership in the fraternity.





Dodge, Catone, Benson, Larson, Warwick, Miss Pfitzner, Hanson

COLLEGE ORCHESTRA

Ingwelde Pfitzner . . . Director

Music



INSTRUMENTAL BEGINNERS . . . TRAINING SCHOOL

A CAPPELLA CHORUS

MARVIN D. GEERE - - - - - Director
SHIRLEY WIFF - - - - - Accompanist

SOPRANOS	ALTOS
Joan Aamodt	Lois Bernd
Edna Briesemeister	Margaret Davis
Louella Halling	Loretta Golden
Youlan Hanson	Barbara Harris
Eileen Hovda	Bernice Inman
Marilyn Mercord	Marie Klett
Phyllis Myhre	Marge Lynch
Millicent Skone	Maxine Wurtz
Mary Somson	
Dolores Warwick	



Back Row: Klett, Warwick, Somson, M. Davis, Lynch.
Middle Row: Skone, Hovda, Wurtz, Aamodt, Bernd, Inman, Harris, Golden.
Front Row: Myhre, Mercord, Briesemeister, Hanson, Halling, Wiff.

WOMEN'S CHORUS

CARA WHARTON - - - - - Director
JOYCE STRAUB-SHIRLEY SCHILLBERG—
President

YOULAN HANSON - Secretary-Treasurer
EVELYN COCHRAN - - - - - Librarian
SHIRLEY WIFF - - - - - Accompanist

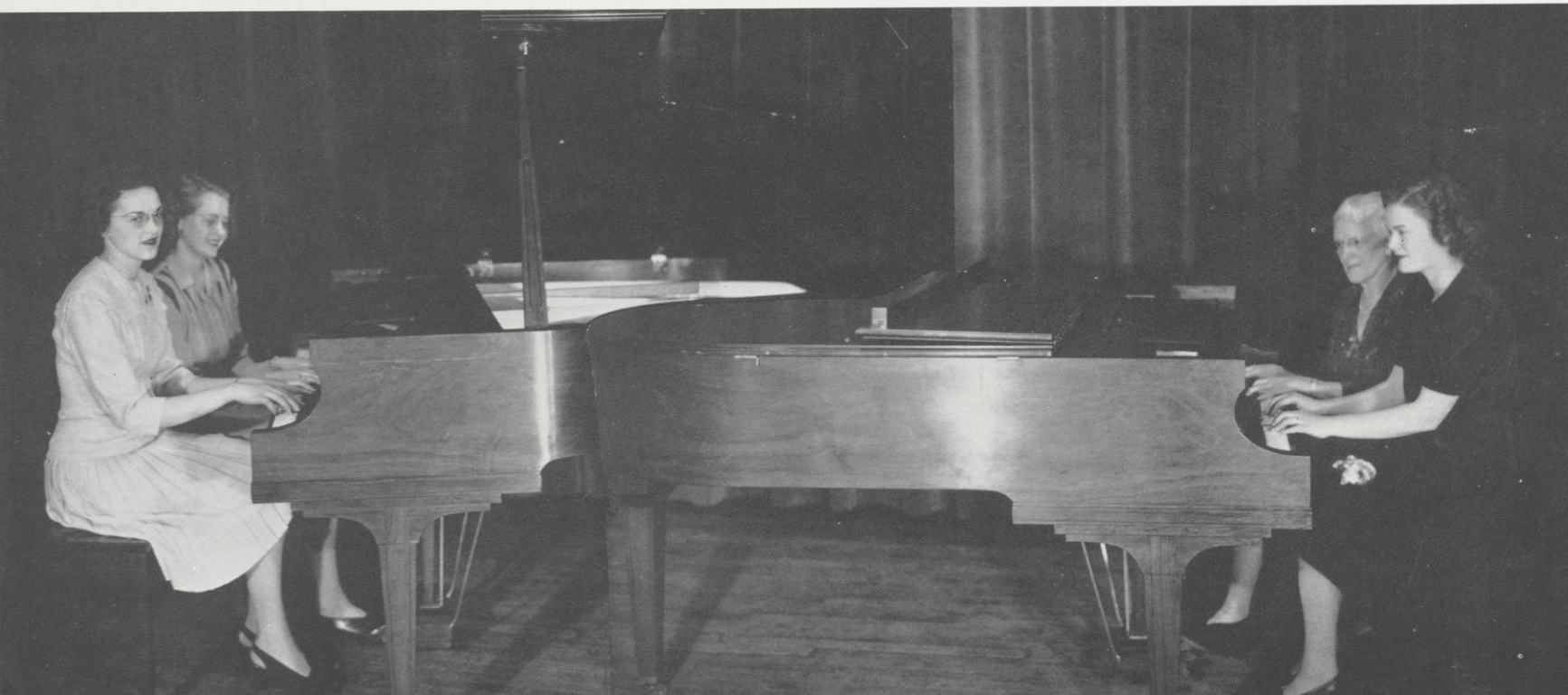
Shirley Anderson	Eileen Hovda
Helen Burke	Maxine Huenink
Evelyn Cochran	Marion Jacobson
Margaret Davis	Evadine Jurgenson
Denise Demulling	Jean Larson
La Vore Ellenson	Marilyn Mercord
Mary Finke	Patricia Nelson
Jane Gibson	Shirley Schillberg
Loretta Golden	Sylva Swenson
Florence Guest	Joyce Straub
Youlan Hanson	Leona Von Kuster
Frances Harrigan	Marguerite Wagner
Mary Hennesy	Shirley Wiff
Evelyn Hoffmeyer	Maxine Wurtz





SEPTET

Marilyn Mercord
Denise Demulling
Maxine Wurtz
Evadine Jurgenson
Barbara Harris
Lois Bernd
Margaret Davis
Cara Wharton, Director



Lois Bernd
Gladys Leadholm

Cara Wharton
Shirley Wiff

DEBATE

Two debate teams represented the River Falls Teachers College in the annual Red River Valley Tournament, defending and opposing the proposition, Resolved: That the United States should co-operate in establishing and maintaining an international police force upon the defeat of the Axis. Louis Daniels and Glenn Teasdale won two of the four debates in which they participated. John Bradley and Elmer Hedlund won three debates of the four, tying for second place with Augsburg College; in the finals the team placed third.

First place was awarded to Marge Lynch for her original oration, "Juvenile Delinquency."

"The Bible Is Our Greatest National Asset" was the title for the original oration given by Mr. Splinter, Presbyterian Minister of Ellsworth. This oration has been published recently.

VERSE SPEAKING CHOIR

In September of 1943, the Verse Speaking Choir was organized to develop group interpretation of poetry and rhythmic prose. Sensitivity to shadings of vocal quality and tone color, improvement of the speaking voice, and an opportunity for creative self expression were some of the objectives sought for each member of the choir.

Members of this group read for the Christmas Party and the Christmas Pageant. BALLAD FOR AMERICANS has been prepared to be given for Visitors' Day in May.



Hoffmann (Coach), Daniels, Hedlund, Bradley, Teasdale

Speech



Lynch



Back Row: Marvel Haglund, Helen Burke, Evelyn Cochran, Lois Meulemens, Mary Paulson, Albertina Jacobson, Elsie Hoffmann.

Front Row: Mae Ona Lee, Ruth Hurth, Alice Kirchener, Louise Melby, Eleanor Hayes, Maxine Huenick, Millicent Skone, Ruth Peterson.

Other Members: Doris Shroeder, Betty Peterson, Rita Gillis, Doris Jackelen, Margurite Wagner, Mary Henessy, Alice Kickhoefer, Audrey Gillstad.



Homecoming

October 26 and 27, 1943

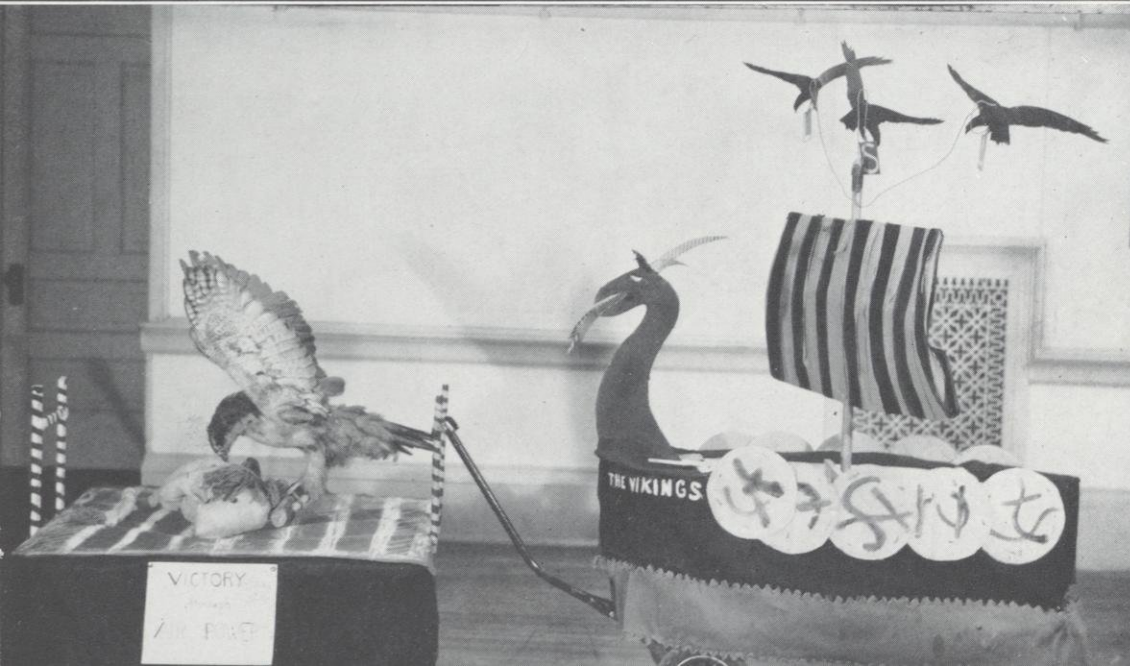
TUESDAY EVENING

Parade

Mass Meeting

Mock Game

Faculty-Alumni Reception



WEDNESDAY EVENING

Game with St. Olaf

October 26 and 27, 1943

Homecoming

Despite a decrease in enrollment and other wartime problems, the 1943 homecoming proved a big success!

Through the combined efforts of students and faculty, a homecoming in miniature was presented in the south hall gymnasium Tuesday evening, October 26. The gymnasium was the scene of much excitement from 7 until 10 o'clock. A parade consisting of floats which represented the various school organizations was led into the room by the pep band. True to the old homecoming tradition, these floats were judged, top honors going to the float sponsored by the Language Club. The mass meeting, at which Dr. Kettlekamp presided as master of ceremonies, had as guests of honor the present faculty members who can boast River Falls State Teachers College as their alma mater. The coronation of the queen, Reuben Johnson, brought the meeting to a fitting climax. Football teams composed of girls battled through four quarters of grid-iron football on the hard gym floor. Following this game, faculty, alumni, and students enjoyed coffee and doughnuts served by the faculty.

Then on Wednesday, October 27, the homecoming festivities were brought to a close by a regulation game between St. Olaf and the Falls, the Falcons winning, 20 to 12.





Organizations

Officers Only

HONOR SOCIETY

Melbye, Sampson

RURAL LIFE CLUB

Ball, Cochran, Smith

PALETTE CLUB

Trindle, Henrikson, Inman

ACE

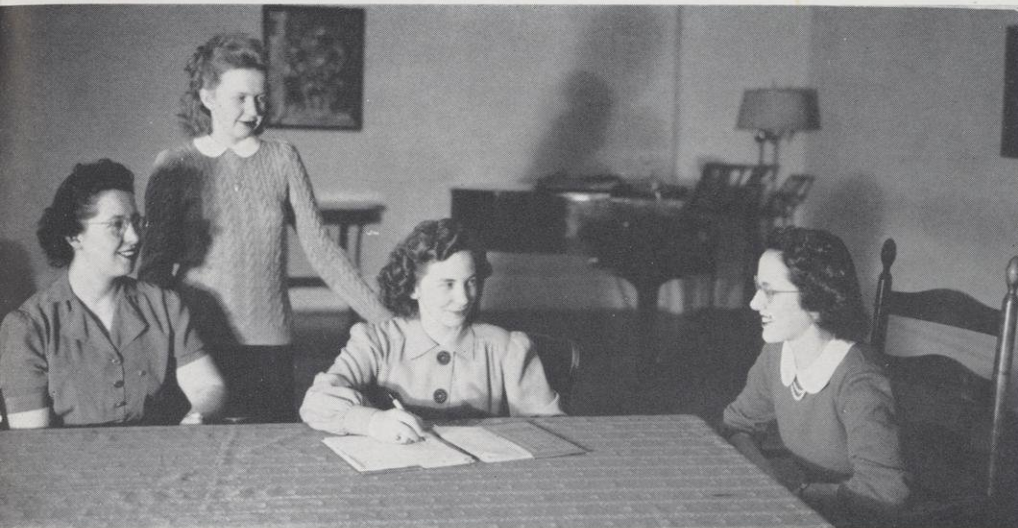
Hoseid, Hanson, Larson, Stronks

MIDGARDIANS

Weldon, Erickson, Henrikson

LANGUAGE CLUB

Wiff, Hayes, Harris



Harmeling, Swanson, Larson, Ryan

SIGMA CHI SIGMA



Back Row: Sneesby, Churchill, Christensen, Leadholm, Luberg, Hoseid, Larson, Aasterud, Berger.
Front Row: Boardman, Stronks, Harmeling, Anderson, Hanson.

Y. W. C. A.



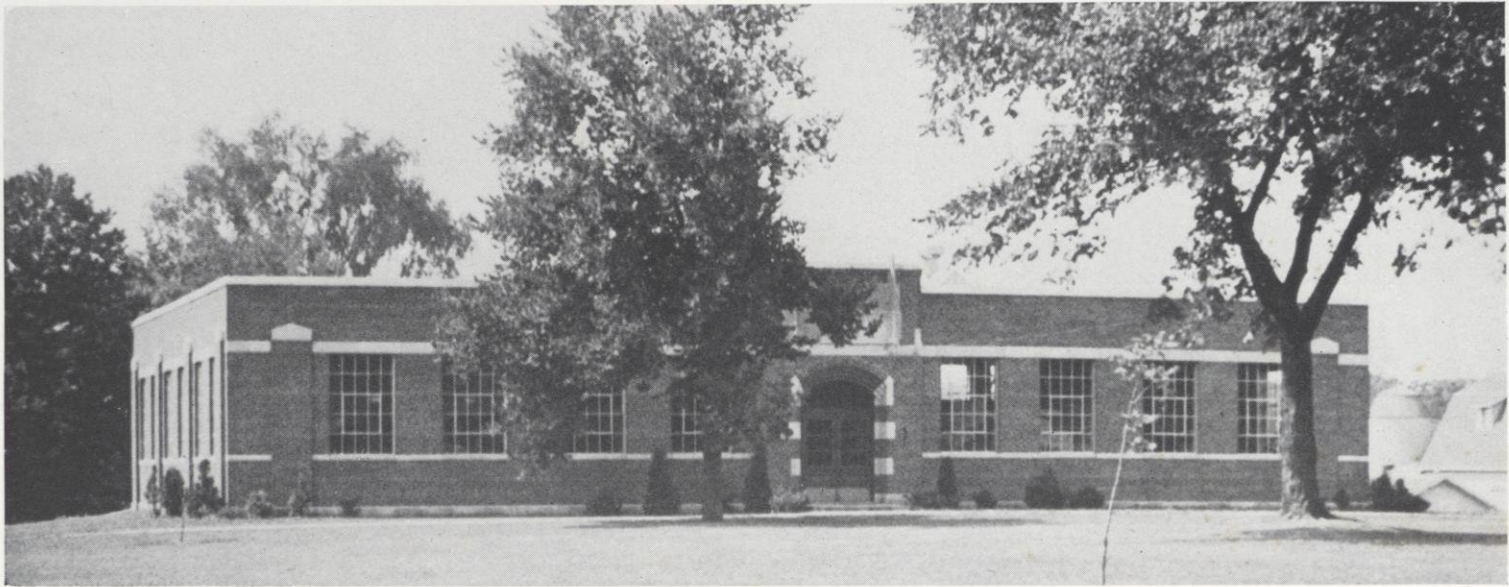
Back Row: McCardle, Davis, Sneesby, Sampson.
Front Row: McCollow, Aasterud, Swanson, Hedlund, Stronks.

STUDENT SENATE



Hedlund, Ausderau, Larson, Hendrickson, Haile, Johnson, Beer

Y. M. C. A.



BUREAU OF ENGRAVING, INCORPORATED
Minneapolis, Minnesota

