



LIBRARIES

UNIVERSITY OF WISCONSIN-MADISON

Site 3107: Uhrenholdt Memorial State Forest, Sawyer County. 1950-07-05

[s.l.]: [s.n.], 1950-07-05

<https://digital.library.wisc.edu/1711.dl/MCIUEQJLFETMU8M>

This material may be protected by copyright law (Title 17, US Code).

For information on re-use see:

<http://digital.library.wisc.edu/1711.dl/Copyright>

The libraries provide public access to a wide range of material, including online exhibits, digitized collections, archival finding aids, our catalog, online articles, and a growing range of materials in many media.

When possible, we provide rights information in catalog records, finding aids, and other metadata that accompanies collections or items. However, it is always the user's obligation to evaluate copyright and rights issues in light of their own use.

STAND RECORD

FORESTS

Stand No. 31040

Name: Ulyen Holtz
County: Sawyer
Date: July 5th 1950
Size of Stand: 20 acres
Forest Type: white pine - red pine
Topography: level

Observers: Cotton et al

Locality: Seely

T: 42N R: 8W Sec: 15

Size of Area Sampled: 20 acres

Soil Type: sandy Plainfield Sandy Loam and Peat
Slope: Directions

Condition of Stand:

part is good Part is not so good
grazed a long time ago - this part full of
dead firs. Little cutting.

Open Grown Trees:

% Canopy: 75

Stumps:

- | | | | |
|----|----|----|-----|
| 1. | 4. | 7. | 10. |
| 2. | 5. | 8. | 11. |
| 3. | 6. | 9. | 12. |

Soil Data:

	pH	N	P	K	Ca	Mg	Org. Mat.	Colloids	W.H.C.
A ₀									
A ₁									
A ₂									
B									

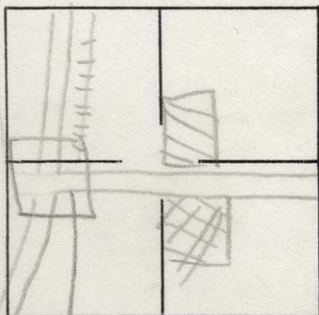
DEPTH

CHARACTERISTICS (Color, Texture, Structure, etc.)

A ₀	1"	pine needles
A ₁	1-2"	black sandy
A ₂	2-3"	purple-gray sand
B		medium gray sand

Parent Material:

Map:



Prob. = .92

Town of Seely

white
birch

3107

30
30 ①
30 *

black
oak

3107

37

37 *

white

Spencer

3107

12

12 #

sugar maple

3107

23

23①

18

12

53*

Tulia

3107

17

17②

17*

black cherry

3107

21

12

33*

red oak

3107

28

28 (C)

28 *

Popstern

3107

35

90

60

95

2800

19

105

404*

distances
2 trees

3107

	3	37	
	1	38	
		23	
		30	
1	3	70	
6	6	73	
	2	80	
		28	
		17	
8	8	96	4

distances

+ trees

3107

6 57

3 28

53

30

12

31 15

1 16 17

4 04

37

28

17

33

1 63 31 *

red maple

3107

13

24

26

35

40

1 38 (1)

28

13

13

18

45

30

18

25

3 28 *

red pine

3107

	1	55	
		90	
	1	80	
	1	10	
	2	10	
	1	80	
	2	10	
	1	25	
	1	10	
1	3	70	(1)
		80	
	1	90	
	1	90	
	2	20	
	3	10	
	1	20	
	1	20	
	1	30	
		75	
	1	50	
	1	60	
3	1	15	*

balsam

3107

12

24

13

20

30

34

18

13

12

32

40

60

29

3 37 ①

18

20

21

17

15

15

14

12

27

50

15

17

21

20

21

17

6 57 *

Distances

3107

	90
	90
1	00
	90
1	10
1	15
1	15
1	20
1	60
1	40
	45
1	65
1	80
2	15
1	95
1	40
1	40
	95
2	15
1	70
1	20
1	05
1	50
1	75
2	45
1	55
1	80
1	00
	55
1	10
1	30
1	20
	75
1	20
1	95
2	05
1	95
1	60
1	60
	90
5	5 35 *

white pine

3107

85
85
1 40
55
95
1 05
55
1 10
85
1 05
2 30
50
1 00
60
1 45
2 30
1 35
1 80
70
2 05
2 80
78
60
2 00
1 80
1 80
1 05
1 10
3 05
1 45
1 00
1 50
1 30
2 10
1 95
85
2 20
80
2 80
1 90
2 25
2 40
2 75
2 50
75
6 6 73 (1)
1 20
1 65
90
70
1 40
1 10
1 70
75
1 20
90
1 05
60
1 50
55
2 20
2 20
1 30
2 40
1 60
1 10
2 00
44
1 30
1 25
1 70
1 00
85
1 30
1 20
85
3 30
50
1 60
1 10
2 30
2 10
65
1 1 6 17 *

POINT RECORD TREES

NORTHERN PINE-HARDWOODS

Stand No. 3107

STATION NO.	1	2	3	4	5	6	7	8	9	10
Abies balsam	1	2	3	4	4	4	4		2	2
Acer rubrum	2		1							
A. sacchar.	1	1								
A. spicatum									1	
Betula lut.									1	
B. papyrif										
Carpinus car										
Fagus gran										
Ostrya virg										
Picea glau										
Pinus Bank										
P. resinosa		80		155		190 190	220		90 310	180 110 120
P. Strobus	85, 85 120	140, 55 165	75, 105 90	55 70 140	110 110 170	95, 105	75	230 120 90	50 105	60
Populus bals										
P. grand										
P. trem										
Prunus pen.										
Quercus ell										
Q. rubra										
Tilia amer										
Tsuga can										
Thuja occ										
Ulmus amer										
U. fulva										
Prunus serot		1								
Prunus virg										2
Distance	9	9	10	9	11	11.5	11.5	12	16	14

24 12
10 8

POINT RECORD TREES

NORTHERN PINE-HARDWOODS

Stand No. 3107

STATION NO.	11	12	13	14	15	16	17	18	19	20
Abies balsam	30	20 ✓	3 ✓	2 ✓	2 ✓	3 ✓	4 ✓	18 ✓	15 ✓	3 ✓
Acer rubrum		13 ✓	✓	✓	24 ✓	28 ✓	✓	✓	✓	2 ✓
A. sacchar.	12 ✓	23 ✓	✓	✓	✓	✓	✓	✓	✓	✓
A. spicatum										
Betula lut.										
B. papyrif										30
Carpinus car										
Fagus gran										
Ostrya virg										
Picea glau										
Pinus Bank										
P. resinosa										
P. Strobus	150 ✓		100 ✓ 55 ✓ 60 ✓ 24 ✓	145 ✓ 220 ✓	130 ✓ 240 ✓	230 ✓ 135 ✓ 160 ✓		180 ✓ 110 ✓	90 ✓ 20 ✓ 200 ✓	280 ✓ 44 ✓ 130 ✓
Populus bals										
P. grand										
P. trem	35 ✓	✓		90			60 ✓			
Prunus pen.										
Quercus ell				37 ✓						
Q. rubra					28					
Tilia amer										
Tsuga can										
Thuja occ										
Ulmus amer										
U. fulva										
Prunus Aer.		21 ✓	18 ✓	✓						
Distance	4.5	16.5	18	21.5	19.5	14	14	9.5	21.5	17

$\frac{21}{8} \frac{10}{6}$

POINT RECORD TREES

NORTHERN PINE-HARDWOODS

Stand No. 3107.

STATION NO.	21	22	23	24	25	26	27	28	29	30	
Abies balsam	(14)	2	4	(12)	2	3	(50)	12	3	2	4
Acer rubrum	1	(13)		1		26			(13)	1	
A. sacchar.					1			1			
A. spicatum											
Betula lut.											
B. papyrif											
Carpinus car											
Fagus gran											
Ostrya virg											
Picea glau					(12)						
Pinus Bank											
P. resinosa	210 190 (120)		210 (130)	125		(75)				110 (150)	
P. Strobus		74,60 (125)		200 (170)		140,180 (100)	105,110 (85)	305 (130)	145,100 (120)	150 (85)	
Populus bals											
P. grand											
P. trem								(19)			
Prunus pen.											
Quercus ell											
Q. rubra											
Tilia amer		1									
Tsuga can											
Thuja occ											
Ulmus amer											
U. fulva											
Prunus serot				1			1	2			
Prunus nig										1	
Distance	12	10.5	15	17.5	24.5	15.5	18	10	5.5	11	

$\frac{12}{7} \frac{11}{7}$

POINT RECORD TREES

NORTHERN PINE-HARDWOODS

Stand No. 3107

STATION NO.	31	32	33	34	35	36	37	38	39	40
Abies balsam		32	17	40	60	20			17 21	29
Acer rubrum	18	45			40 30		18 25			
A. sacchar.	2									
A. spicatum										
Betula lut.										
B. papyrif										
Carpinus car										
Fagus gran										
Ostrya virg										
Picea glau										
Pinus Bank										
P. resinosa					160					
P. Strobus	130 330		210 50 170	85 160		220 20 110	280 190	225 240 230	275 250	75 210 265
Populus bals										
P. grand										
P. trem		95 105								
Prunus pen.										
Quercus ell										
Q. rubra										
Tilia amer	17									
Tsuga can										
Thuja occ										
Ulmus amer										
U. fulva										
<i>Prunus penn.</i>								12		
Distance	13	12	7.5	12	19.5	20.5	19.5	16	16	9

20 13
8 8

TREE DATA SUMMARY SHEET

Northern Pine-Hardwoods

2 trees

Station Number: 3107

Prob. 92

TREE	# PTS	# TRS	DOM. CLASSES			TOT. DOM.	# SAP	D. % SAP	F. % SDL.	F. % TRS.	% SUM F. TR.	D. % TRS.	DOM% TRS.	DFD INDEX	C. I.
			-80	-320	321										
Abies bals	12	13	13			337	109	74.2	3		20.0	16.3	3.8	40.1	281
Acer rubru	4	5	5			138	14	9.5	15		6.7	6.3	1.6	14.6	88
A. sacchar	1	1	1			23	11	7.5	1		1.7	1.3	0.3	3.3	33
A. spicatu							1	0.7	1						
Betula lut							1	0.7							
B. papyrif	2	1	1			30	1	0.7			1.7	1.3	0.3	3.3	17
Carpinus c															
Fagus gran															
Ostrya vir															
Picea glau															
Pinus Bank															
P. resinosa	7	9		9		1370					11.7	11.3	15.4	38.4	115
P. Strobus	29	45	9	36		6673			2		48.3	56.3	75.0	179.6	898
Populus ba															
P. grandid															
P. tremulo	4	4	2	2		280			2		6.7	5.0	3.1	14.8	30
Prunus pen															
Quercus el															
Q. rubra	1	1	1			28					1.7	1.3	0.3	3.3	20
Tilia amer	1	1	1			17	1	0.7			1.7	1.3	0.3	3.2	26
Tsuga cana															
Thuja occi															
Ulmus amer															
U. fulva															
Prunus ser							6	4.1	2						
Prunus virg							3	2.0	2						
	60	80	33	47		8896	147	100.1			100.2	100.4	100.0	300.6	1508

AVE. DIST. BTW'N TREES: 13.8

AVE B. A.: 111.2

TREES/ACRE: 286

DOM./ACRE: 31,803

1350

HERB FREQUENCY

NORTHERN PINE-HARDWOODS

Stand No. 3107
Quadrat No. 1

Actaea pachypoda	Fragaria virginiana	Potentilla simplex
Actaea rubra	Galium lanceolatum	Prenanthes alba
Adiantum pedatum	Galium triflorum	Pteridium aquilinum
Allium tricoccum	Gaultheria procumbens	Pyrola elliptica
✓ Anemone quinquefolia	Gaylussacia baccata	Pyrola rotundifolia
Aquilegia canadensis	Geranium maculatum	Pyrola secunda
Aralia nudicaulis	Geum canadense	Ranunculus recurvatus
Aralia racemosa	Gnaphalium obtusifolium	Rhus radicans
Arisaema atrorubens	Helianthemum sp.	Ribes americanum
Aster macrophyllus	Helianthus strumosus	Rosa sp.
Aster sagittifolius	Hepatica acutiloba	Rubus parviflorus
Athyrium angustum	Hepatica americana	Rubus (blackberry)
Botrychium virginianum	Impatiens biflora	Rubus (dewberry)
Brachyelytrum erectum	Linnaea borealis	Sambucus pubens
Carex albursina	Lonicera oblongifolia	Sanguinaria canadensis
Caulophyllum thalictroides	Lupinus perennis	Sanicula gregaria
Chimaphila umbellata	Lycopodium annotinum	Smilacina racemosa
Circaea alpina	Lycopodium complanatum	Smilacina stellata
Circaea latifolia	Lycopodium lucidulum	Smilax ecirrhata
Clintonia borealis	Lycopodium obscurum	Solidago ulmifolia
Coptis trifolia	Lysimachia quadrifolia	Streptopus roseus
Corallorrhiza maculata	✓ Maianthemum canadense	Taxus canadensis
Cornus alternifolia	✓ Mitchella repens	Thalictrum dioicum
Cornus canadensis	Mitella diphylla	Trientalis borealis
Cornus rugosa	Mitella nuda	Trillium grandiflorum
Corylus americana	Monotropa uniflora	Uvularia grandiflora
Corylus cornuta	Myrica asplenifolia	Uvularia sessilifolia
Cypripedium acaule	Onoclea sensibilis	✓ Vaccinium angustifolium
Diervilla lonicera	Oryzopsis asperifolia	Vaccinium pennsylvanicum
Dirca palustris	Osmorhiza claytoni	Viburnum acerifolium
Dryopteris linnaeana	Oxalis montana	Viola canadensis
Dryopteris phegopteris	Phryma leptostachya	Viola cucullata
Dryopteris spinulosa	Polygala pauciflora	Viola pallens
Epifagus virginiana	Polygonatum commutatum	Viola pubescens
Epigaea repens	Polygonatum pubescens	Waldsteinia fragarioides

✓ Lonicera hirsuta

✓ Amelanchier canadensis

✓ Moneses uniflora

HERB FREQUENCY

NORTHERN PINE-HARDWOODS

Stand No. 3107.
Quadrat No. 2

- | | | |
|-----------------------------------|--------------------------------|---------------------------------|
| Actaea pachypoda | ✓ <i>Fragaria virginiana</i> | <i>Potentilla simplex</i> |
| Actaea rubra | <i>Galium lanceolatum</i> | <i>Prenanthes alba</i> |
| Adiantum pedatum | <i>Galium triflorum</i> | ✓ <i>Pteridium aquilinum</i> |
| Allium tricoccum | <i>Gaultheria procumbens</i> | <i>Pyrola elliptica</i> |
| ✓ <i>Anemone quinquefolia</i> | <i>Gaylussacia baccata</i> | <i>Pyrola rotundifolia</i> |
| <i>Aquilegia canadensis</i> | <i>Geranium maculatum</i> | <i>Pyrola secunda</i> |
| ✓ <i>Aralia nudicaulis</i> | <i>Geum canadense</i> | <i>Ranunculus recurvatus</i> |
| <i>Aralia racemosa</i> | <i>Gnaphalium obtusifolium</i> | <i>Rhus radicans</i> |
| <i>Arisaema atrorubens</i> | <i>Helianthemum sp.</i> | <i>Ribes americanum</i> |
| ✓ <i>Aster macrophyllus</i> | <i>Helianthus strumosus</i> | <i>Rosa sp.</i> |
| <i>Aster sagittifolius</i> | <i>Hepatica acutiloba</i> | <i>Rubus parviflorus</i> |
| <i>Athyrium angustum</i> | <i>Hepatica americana</i> | <i>Rubus (blackberry)</i> |
| <i>Botrychium virginianum</i> | <i>Impatiens biflora</i> | <i>Rubus (dewberry)</i> |
| <i>Brachyelytrum erectum</i> | <i>Linnaea borealis</i> | <i>Sambucus pubens</i> |
| <i>Carex albursina</i> | <i>Lonicera oblongifolia</i> | <i>Sanguinaria canadensis</i> |
| <i>Caulophyllum thalictroides</i> | <i>Lupinus perennis</i> | <i>Sanicula gregaria</i> |
| <i>Chimaphila umbellata</i> | <i>Lycopodium annotinum</i> | ✓ <i>Smilacina racemosa</i> |
| <i>Circaea alpina</i> | <i>Lycopodium complanatum</i> | <i>Smilacina stellata</i> |
| <i>Circaea latifolia</i> | <i>Lycopodium lucidulum</i> | <i>Smilax ecirrhata</i> |
| <i>Clintonia borealis</i> | <i>Lycopodium obscurum</i> | <i>Solidago ulmifolia</i> |
| <i>Coptis trifolia</i> | <i>Lysimachia quadrifolia</i> | <i>Streptopus roseus</i> |
| <i>Corallorrhiza maculata</i> | ✓ <i>Maianthemum canadense</i> | <i>Taxus canadensis</i> |
| <i>Cornus alternifolia</i> | ✓ <i>Mitchella repens</i> | ✓ <i>Thalictrum dioicum</i> |
| <i>Cornus canadensis</i> | <i>Mitella diphylla</i> | <i>Trientalis borealis</i> |
| <i>Cornus rugosa</i> | <i>Mitella nuda</i> | <i>Trillium grandiflorum</i> |
| <i>Corylus americana</i> | <i>Monotropa uniflora</i> | <i>Uvularia grandiflora</i> |
| <i>Corylus cornuta</i> | <i>Myrica asplenifolia</i> | ✓ <i>Uvularia sessilifolia</i> |
| <i>Cypripedium acaule</i> | <i>Oncoclea sensibilis</i> | <i>Vaccinium angustifolium</i> |
| ✓ <i>Diervilla lonicera</i> | <i>Oryzopsis asperifolia</i> | <i>Vaccinium pennsylvanicum</i> |
| <i>Dirca palustris</i> | <i>Osmorhiza claytoni</i> | <i>Viburnum acerifolium</i> |
| <i>Dryopteris linnaeana</i> | <i>Oxalis montana</i> | <i>Viola canadensis</i> |
| <i>Dryopteris phegopteris</i> | <i>Phryma leptostachya</i> | <i>Viola cucullata</i> |
| <i>Dryopteris spinulosa</i> | ✓ <i>Polygala pauciflora</i> | <i>Viola pallens</i> |
| <i>Epifagus virginiana</i> | <i>Polygonatum commutatum</i> | <i>Viola pubescens</i> |
| <i>Epigaea repens</i> | ✓ <i>Polygonatum pubescens</i> | <i>Waldsteinia fragarioides</i> |

✓ *Lonicera hisuta*

HERB FREQUENCY

NORTHERN PINE-HARDWOODS

Stand No. 3107.
Quadrat No. 3

Actaea pachypoda	Fragaria virginiana	Potentilla simplex
Actaea rubra	Galium lanceolatum	Prenanthes alba
Adiantum pedatum	Galium triflorum	Pteridium aquilinum
Allium tricoccum	Gaultheria procumbens	Pyrola elliptica
✓ Anemone quinquefolia	Gaylussacia baccata	Pyrola rotundifolia
Aquilegia canadensis	Geranium maculatum	Pyrola secunda
✓ Aralia nudicaulis	Geum canadense	Ranunculus recurvatus
Aralia racemosa	Gnaphalium obtusifolium	Rhus radicans
Arisaema atrorubens	Helianthemum sp.	Ribes americanum
✓ Aster macrophyllus	Helianthus strumosus	Rosa sp.
Aster sagittifolius	Hepatica acutiloba	Rubus parviflorus
Athyrium angustum	Hepatica americana	Rubus (blackberry)
Botrychium virginianum	Impatiens biflora	Rubus (dewberry)
Brachyelytrum erectum	Linnaea borealis	Sambucus pubens
Carex albursina	Lonicera oblongifolia	Sanguinaria canadensis
Caulophyllum thalictroides	Lupinus perennis	Sanicula gregaria
Chimaphila umbellata	Lycopodium annotinum	Smilacina racemosa
Circaea alpina	Lycopodium complanatum	Smilacina stellata
Circaea latifolia	Lycopodium lucidulum	Smilax ecirrhata
Clintonia borealis	✓ Lycopodium obscurum	Solidago ulmifolia
Coptis trifolia	Lysimachia quadrifolia	Streptopus roseus
Corallorrhiza maculata	✓ Maianthemum canadense	Taxus canadensis
Cornus alternifolia	✓ Mitella repens	Thalictrum dioicum
Cornus canadensis	Mitella diphylla	Trientalis borealis
Cornus rugosa	Mitella nuda	Trillium grandiflorum
Corylus americana	Monotropa uniflora	Uvularia grandiflora
✓ Corylus cornuta	Myrica asplenifolia	✓ Uvularia sessilifolia
Cypripedium acaule	Onoclea sensibilis	✓ Vaccinium angustifolium
Diervilla lonicera	✓ Oryzopsis asperifolia	✓ Vaccinium pennsylvanicum
Dirca palustris	Osmorhiza claytoni	Viburnum acerifolium
Dryopteris linnaeana	Oxalis montana	Viola canadensis
Dryopteris phegopteris	Phryma leptostachya	Viola cucullata
Dryopteris spinulosa	✓ Polygala pauciflora	Viola pallens
Epifagus virginiana	Polygonatum commutatum	Viola pubescens
Epigaea repens	Polygonatum pubescens	Waldsteinia fragarioides
✓ <i>Amelanchier canadensis</i>		

HERB FREQUENCY

NORTHERN PINE-HARDWOODS

Stand No. 3107

Quadrat No. 4

Actaea pachypoda	Fragaria virginiana	Potentilla simplex
Actaea rubra	Galium lanceolatum	Prenanthes alba
Adiantum pedatum	Galium triflorum	✓ Pteridium aquilinum
Allium tricoccum	Gaultheria procumbens	Pyrola elliptica
Anemone quinquefolia	Gaylussacia baccata	Pyrola rotundifolia
Aquilegia canadensis	Geranium maculatum	Pyrola secunda
✓ Aralia nudicaulis	Geum canadense	Ranunculus recurvatus
Aralia racemosa	Gnaphalium obtusifolium	Rhus radicans
Arisaema atrorubens	Helianthemum sp.	Ribes americanum
✓ Aster macrophyllus	Helianthus strumosus	Rosa sp.
Aster sagittifolius	Hepatica acutiloba	Rubus parviflorus
Athyrium angustum	Hepatica americana	Rubus (blackberry)
Botrychium virginianum	Impatiens biflora	Rubus (dewberry)
Brachyelytrum erectum	Linnaea borealis	Sambucus pubens
Carex albursina	Lonicera oblongifolia	Sanguinaria canadensis
Caulophyllum thalictroides	Lupinus perennis	Sanicula gregaria
Chimaphila umbellata	Lycopodium annotinum	Smilacina racemosa
Circaea alpina	Lycopodium complanatum	Smilacina stellata
Circaea latifolia	Lycopodium lucidulum	Smilax ecirrhata
Clintonia borealis	✓ Lycopodium obscurum	Solidago ulmifolia
Coptis trifolia	Lysimachia quadrifolia	Streptopus roseus
Corallorrhiza maculata	✓ Maianthemum canadense	Taxus canadensis
Cornus alternifolia	✓ Mitchellia repens	Thalictrum dioicum
Cornus canadensis	Mitella diphylla	Trientalis borealis
Cornus rugosa	Mitella nuda	Trillium grandiflorum
Corylus americana	Monotropa uniflora	Uvularia grandiflora
Corylus cornuta	Myrica asplenifolia	Uvularia sessilifolia
Cypripedium acaule	Onoclea sensibilis	Vaccinium angustifolium
Diervilla lonicera	Oryzopsis asperifolia	Vaccinium pennsylvanicum
Dirca palustris	Osmorhiza claytoni	Viburnum acerifolium
Dryopteris linnaeana	Oxalis montana	Viola canadensis
Dryopteris phegopteris	Phryma leptostachya	Viola cucullata
Dryopteris spinulosa	✓ Polygala pauciflora	Viola pallens
Epifagus virginiana	Polygonatum commutatum	Viola pubescens
Epigaea repens	Polygonatum pubescens	Waldsteinia fragarioides

✓ Amelanchier canadensis

HERB FREQUENCY

NORTHERN PINE-HARDWOODS

Stand No. 3107.
Quadrat No. 5

Actaea pachypoda	Fragaria virginiana	Potentilla simplex
Actaea rubra	Galium lanceolatum	Prenanthes alba
Adiantum pedatum	✓ Galium triflorum	Pteridium aquilinum
Allium tricoccum	Gaultheria procumbens	Pyrola elliptica
✓ Anemone quinquefolia	Gaylussacia baccata	Pyrola rotundifolia
Aquilegia canadensis	Geranium maculatum	Pyrola secunda
✓ Aralia nudicaulis	Geum canadense	Ranunculus recurvatus
Aralia racemosa	Gnaphalium obtusifolium	Rhus radicans
Arisaema atrorubens	Helianthemum sp.	Ribes americanum
Aster macrophyllus	Helianthus strumosus	Rosa sp.
Aster sagittifolius	Hepatica acutiloba	Rubus parviflorus
Athyrium angustum	Hepatica americana	Rubus (blackberry)
Botrychium virginianum	Impatiens biflora	✓ Rubus (dewberry)
Brachyelytrum erectum	Linnaea borealis	Sambucus pubens
Carex albursina	Lonicera oblongifolia	Sanguinaria canadensis
Caulophyllum thalictroides	Lupinus perennis	Sanicula gregaria
Chimaphila umbellata	Lycopodium annotinum	Smilacina racemosa
Circaea alpina	Lycopodium complanatum	Smilacina stellata
Circaea latifolia	Lycopodium lucidulum	Smilax ecirrhata
Clintonia borealis	✓ Lycopodium obscurum	Solidago ulmifolia
Coptis trifolia	Lysimachia quadrifolia	✓ Streptopus roseus
Corallorrhiza maculata	✓ Maianthemum canadense	Taxus canadensis
Cornus alternifolia	✓ Mitchella repens	Thalictrum dioicum
Cornus canadensis	Mitella diphylla	Trientalis borealis
Cornus rugosa	Mitella nuda	Trillium grandiflorum
Corylus americana	Monotropa uniflora	Uvularia grandiflora
Corylus cornuta	Myrica asplenifolia	Uvularia sessilifolia
Cypripedium acaule	Onoclea sensibilis	Vaccinium angustifolium
Diervilla lonicera	Oryzopsis asperifolia	Vaccinium pennsylvanicum
Dirca palustris	Osmorhiza claytoni	Viburnum acerifolium
Dryopteris linnaeana	Oxalis montana	Viola canadensis
Dryopteris phegopteris	Phryma leptostachya	Viola cucullata
Dryopteris spinulosa	Polygala pauciflora	Viola pallens
Epifagus virginiana	Polygonatum commutatum	Viola pubescens
Epigaea repens	Polygonatum pubescens	Waldsteinia fragarioides

HERB FREQUENCY

NORTHERN PINE-HARDWOODS

Stand No. 3107
Quadrat No. 6

Actaea pachypoda	Fragaria virginiana	Potentilla simplex
Actaea rubra	Galium lanceolatum	Prenanthes alba
Adiantum pedatum	Galium triflorum	✓ Pteridium aquilinum
Allium tricoccum	Gaultheria procumbens	Pyrola elliptica
✓ Anemone quinquefolia	Gaylussacia baccata	Pyrola rotundifolia
Aquilegia canadensis	Geranium maculatum	Pyrola secunda
✓ Aralia nudicaulis	Geum canadense	Ranunculus recurvatus
Aralia racemosa	Gnaphalium obtusifolium	Rhus radicans
Arisaema atrorubens	Helianthemum sp.	Ribes americanum
✓ Aster macrophyllus	Helianthus strumosus	Rosa sp.
Aster sagittifolius	Hepatica acutiloba	Rubus parviflorus
Athyrium angustum	Hepatica americana	Rubus (blackberry)
Botrychium virginianum	Impatiens biflora	Rubus (dewberry)
Brachyelytrum erectum	✓ Linnaea borealis	Sambucus pubens
Carex albursina	Lonicera oblongifolia	Sanguinaria canadensis
Caulophyllum thalictroides	Lupinus perennis	Sanicula gregaria
Chimaphila umbellata	Lycopodium annotinum	Smilacina racemosa
Circaea alpina	Lycopodium complanatum	Smilacina stellata
Circaea latifolia	Lycopodium lucidulum	Smilax ecirrhata
✓ Clintonia borealis	✓ Lycopodium obscurum	Solidago ulmifolia
Coptis trifolia	Lysimachia quadrifolia	Streptopus roseus
Corallorrhiza maculata	✓ Maianthemum canadense	Taxus canadensis
Cornus alternifolia	Mitchella repens	✓ Thalictrum dioicum
✓ Cornus canadensis	Mitella diphylla	Trientalis borealis
Cornus rugosa	Mitella nuda	Trillium grandiflorum
Corylus americana	Monotropa uniflora	Uvularia grandiflora
✓ Corylus cornuta	Myrica asplenifolia	✓ Uvularia sessilifolia
Cypripedium acaule	Onoclea sensibilis	Vaccinium angustifolium
Diervilla lonicera	✓ Oryzopsis asperifolia	Vaccinium pennsylvanicum
Dirca palustris	Osmorhiza claytoni	Viburnum acerifolium
Dryopteris linnaeana	Oxalis montana	Viola canadensis
Dryopteris phegopteris	Phryma leptostachya	Viola cucullata
Dryopteris spinulosa	Polygala pauciflora	Viola pallens
Epifagus virginiana	Polygonatum commutatum	Viola pubescens
Epigaea repens	Polygonatum pubescens	Waldsteinia fragarioides

✓ *Lonicera hisuta*
✓ *Amelanchier canadensis*

HERB FREQUENCY

NORTHERN PINE-HARDWOODS

Stand No. 3107.
Quadrat No. 7

Actaea pachypoda	Fragaria virginiana	Potentilla simplex
Actaea rubra	Galium lanceolatum	Prenanthes alba
Adiantum pedatum	Galium triflorum	✓ Pteridium aquilinum
Allium tricoccum	✓ Gaultheria procumbens	Pyrola elliptica
✓ Anemone quinquefolia	Gaylussacia baccata	Pyrola rotundifolia
Aquilegia canadensis	Geranium maculatum	Pyrola secunda
✓ Aralia nudicaulis	Geum canadense	Ranunculus recurvatus
Aralia racemosa	Gnaphalium obtusifolium	Rhus radicans
Arisaema atrorubens	Helianthemum sp.	Ribes americanum
✓ Aster macrophyllus	Helianthus strumosus	Fosa sp.
Aster sagittifolius	Hepatica acutiloba	Rubus parviflorus
Athyrium angustum	Hepatica americana	Rubus (blackberry)
Botrychium virginianum	Impatiens biflora	Rubus (dewberry)
Brachyelytrum erectum	Linnaea borealis	Sambucus pubens
Carex albursina	Lonicera oblongifolia	Sanguinaria canadensis
Caulophyllum thalictroides	Lupinus perennis	Sanicula gregaria
Chimaphila umbellata	Lycopodium annotinum	Smilacina racemosa
Circaea alpina	Lycopodium complanatum	Smilacina stellata
Circaea latifolia	Lycopodium lucidulum	Smilax ecirrhata
✓ Clintonia borealis	✓ Lycopodium obscurum	Solidago ulmifolia
Coptis trifolia	Lysimachia quadrifolia	Streptopus roseus
Corallorrhiza maculata	✓ Maianthemum canadense	Taxus canadensis
Cornus alternifolia	Mitchella repens	Thalictrum dioicum
✓ Cornus canadensis	Mitella diphylla	Trientalis borealis
Cornus rugosa	Mitella nuda	Trillium grandiflorum
Corylus americana	Monotropa uniflora	Uvularia grandiflora
Corylus cornuta	Myrica asplenifolia	Uvularia sessilifolia
Cypripedium acaule	Onoclea sensibilis	Vaccinium angustifolium
Diervilla lonicera	Oryzopsis asperifolia	Vaccinium pennsylvanicum
Dirca palustris	Osmorhiza claytoni	Viburnum acerifolium
Dryopteris linnaeana	Oxalis montana	Viola canadensis
Dryopteris phegopteris	Phryma leptostachya	Viola cucullata
Dryopteris spinulosa	✓ Polygala pauciflora	Viola pallens
Epifagus virginiana	Polygonatum commutatum	Viola pubescens
Epigaea repens	Polygonatum pubescens	Waldsteinia fragarioides

HERB FREQUENCY

NORTHERN PINE-HARDWOODS

Stand No. 3107
Quadrat No. 8

Actaea pachypoda	Fragaria virginiana	Potentilla simplex
Actaea rubra	Galium lanceolatum	Prenanthes alba
Adiantum pedatum	Galium triflorum	Pteridium aquilinum
Allium tricoccum	Gaultheria procumbens	Pyrola elliptica
Anemone quinquefolia	Gaylussacia baccata	Pyrola rotundifolia
Aquilegia canadensis	Geranium maculatum	Pyrola secunda
✓ Aralia nudicaulis	Geum canadense	Ranunculus recurvatus
Aralia racemosa	Gnaphalium obtusifolium	Rhus radicans
Arisaema atrorubens	Helianthemum sp.	Ribes americanum
Aster macrophyllus	Helianthus strumosus	Rosa sp.
Aster sagittifolius	Hepatica acutiloba	Rubus parviflorus
Athyrium angustum	Hepatica americana	Rubus (blackberry)
Botrychium virginianum	Impatiens biflora	Rubus (dewberry)
Brachyelytrum erectum	Linnaea borealis	Sambucus pubens
Carex albursina	Lonicera oblongifolia	Sanguinaria canadensis
Caulophyllum thalictroides	Lupinus perennis	Sanicula gregaria
Chimaphila umbellata	Lycopodium annotinum	Smilacina racemosa
Circaea alpina	Lycopodium complanatum	Smilacina stellata
Circaea latifolia	Lycopodium lucidulum	Smilax ecirrhata
✓ Clintonia borealis	Lycopodium obscurum	Solidago ulmifolia
Coptis trifolia	Lysimachia quadrifolia	Streptopus roseus
Corallorrhiza maculata	✓ Maianthemum canadense	Taxus canadensis
Cornus alternifolia	✓ Mitchella repens	Thalictrum dioicum
Cornus canadensis	Mitella diphylla	Trientalis borealis
Cornus rugosa	Mitella nuda	Trillium grandiflorum
Corylus americana	Monotropa uniflora	Uvularia grandiflora
✓ Corylus cornuta	Myrica asplenifolia	Uvularia sessilifolia
Cypripedium acaule	Onoclea sensibilis	Vaccinium angustifolium
Diervilla lonicera	Oryzopsis asperifolia	Vaccinium pennsylvanicum
Dirca palustris	Osmorhiza claytoni	Viburnum acerifolium
Dryopteris linnaeana	Oxalis montana	Viola canadensis
Dryopteris phegopteris	Phryma leptostachya	Viola cucullata
Dryopteris spinulosa	Polygala pauciflora	Viola pallens
Epifagus virginiana	Polygonatum commutatum	Viola pubescens
Epigaea repens	Polygonatum pubescens	Waldsteinia fragarioides

HERB FREQUENCY

NORTHERN PINE-HARDWOODS

Stand No.

Quadrat No. 9

Actaea pachypoda	Fragaria virginiana	Potentilla simplex
Actaea rubra	Galium lanceolatum	Prenanthes alba
Adiantum pedatum	Galium triflorum	Pteridium aquilinum
Allium tricoccum	Gaultheria procumbens	Pyrola elliptica
✓ Anemone quinquefolia	Gaylussacia baccata	Pyrola rotundifolia
Aquilegia canadensis	Geranium maculatum	Pyrola secunda
✓ Aralia nudicaulis	Geum canadense	Ranunculus recurvatus
Aralia racemosa	Gnaphalium obtusifolium	Rhus radicans
Arisaema atrorubens	Helianthemum sp.	Ribes americanum
Aster macrophyllus	Helianthus strumosus	Rosa sp.
Aster sagittifolius	Hepatica acutiloba	Rubus parviflorus
Athyrium angustum	Hepatica americana	✓ Rubus (blackberry)
Botrychium virginianum	Impatiens biflora	✓ Rubus (dewberry)
Brachyelytrum erectum	Linnaea borealis	Sambucus pubens
Carex albursina	Lonicera oblongifolia	Sanguinaria canadensis
Caulophyllum thalictroides	Lupinus perennis	Sanicula gregaria
Chimaphila umbellata	Lycopodium annotinum	Smilacina racemosa
Circaea alpina	Lycopodium complanatum	Smilacina stellata
Circaea latifolia	Lycopodium lucidulum	Smilax ecirrhata
Clintonia borealis	✓ Lycopodium obscurum	Solidago ulmifolia
Coptis trifolia	Lysimachia quadrifolia	Streptopus roseus
Corallorrhiza maculata	✓ Maianthemum canadense	Taxus canadensis
Cornus alternifolia	✓ Mitchella repens	Thalictrum dioicum
✓ Cornus canadensis	Mitella diphylla	✓ Trientalis borealis
Cornus rugosa	Mitella nuda	✓ Trillium grandiflorum
Corylus americana	Monotropa uniflora	Uvularia grandiflora
✓ Corylus cornuta	Myrica asplenifolia	Uvularia sessilifolia
Cypripedium acaule	Onoclea sensibilis	Vaccinium angustifolium
Diervilla lonicera	✓ Oryzopsis asperifolia	Vaccinium pennsylvanicum
Dirca palustris	Osmorhiza claytoni	Viburnum acerifolium
Dryopteris linnaeana	Oxalis montana	Viola canadensis
Dryopteris phegopteris	Phryma leptostachya	Viola cucullata
Dryopteris spinulosa	Polygala pauciflora	Viola pallens
Epifagus virginiana	Polygonatum commutatum	Viola pubescens
Epigaea repens	Polygonatum pubescens	Waldsteinia fragarioides

✓ Schizachne purpurascens

HERB FREQUENCY

NORTHERN PINE-HARDWOODS

Stand No. 3107
Quadrat No. 10

Actaea pachypoda	Fragaria virginiana	Potentilla simplex
Actaea rubra	Galium lanceolatum	Prenanthes alba
Adiantum pedatum	✓ Galium triflorum	✓ Pteridium aquilinum
Allium tricoccum	Gaultheria procumbens	Pyrola elliptica
Anemone quinquefolia	Gaylussacia baccata	Pyrola rotundifolia
Aquilegia canadensis	Geranium maculatum	Pyrola secunda
✓ Aralia nudicaulis	Geum canadense	Ranunculus recurvatus
Aralia racemosa	Gnaphalium obtusifolium	Rhus radicans
Arisaema atrorubens	Helianthemum sp.	Ribes americanum
✓ Aster macrophyllus	Helianthus strumosus	Rosa sp.
Aster sagittifolius	Hepatica acutiloba	Rubus parviflorus
Athyrium angustum	Hepatica americana	Rubus (blackberry)
Botrychium virginianum	Impatiens biflora	Rubus (dewberry)
Brachyelytrum erectum	✓ Linnaea borealis	Sambucus pubens
Carex albursina	Lonicera oblongifolia	Sanguinaria canadensis
Caulophyllum thalictroides	Lupinus perennis	Sanicula gregaria
Chimaphila umbellata	Lycopodium annotinum	Smilacina racemosa
Circaea alpina	Lycopodium complanatum	Smilacina stellata
Circaea latifolia	Lycopodium lucidulum	Smilax ecirrhata
Clintonia borealis	✓ Lycopodium obscurum	Solidago ulmifolia
Coptis trifolia	Lysimachia quadrifolia	Streptopus roseus
Corallorrhiza maculata	✓ Maianthemum canadense	Taxus canadensis
Cornus alternifolia	Mitchella repens	✓ Thalictrum dioicum
Cornus canadensis	Mitella diphylla	✓ Trientalis borealis
Cornus rugosa	Mitella nuda	Trillium grandiflorum
Corylus americana	Monotropa uniflora	Uvularia grandiflora
✓ Corylus cornuta	Myrica asplenifolia	✓ Uvularia sessilifolia
Cypripedium acaule	Onoclea sensibilis	Vaccinium angustifolium
Diervilla lonicera	✓ Oryzopsis asperifolia	Vaccinium pennsylvanicum
Dirca palustris	Osmorhiza claytoni	Viburnum acerifolium
Dryopteris linnaeana	Oxalis montana	Viola canadensis
Dryopteris phegopteris	Phryma leptostachya	Viola cucullata
Dryopteris spinulosa	Polygala pauciflora	Viola pallens
Epifagus virginiana	Polygonatum commutatum	Viola pubescens
Epigaea repens	Polygonatum pubescens	Waldsteinia fragarioides

✓ Amelanchier canadensis
✓ Viola renifolia

HERB FREQUENCY

NORTHERN PINE-HARDWOODS

Stand No. 3107.
Quadrat No. 11

Actaea pachypoda	Fragaria virginiana	Potentilla simplex
Actaea rubra	Galium lanceolatum	Prenanthes alba
Adiantum pedatum	Galium triflorum	Pteridium aquilinum
Allium tricoccum	Gaultheria procumbens	Pyrola elliptica
✓ Anemone quinquefolia	Gaylussacia baccata	Pyrola rotundifolia
Aquilegia canadensis	Geranium maculatum	Pyrola secunda
✓ Aralia nudicaulis	Geum canadense	Ranunculus recurvatus
Aralia racemosa	Gnaphalium obtusifolium	Rhus radicans
Arisaema atrorubens	Helianthemum sp.	Ribes americanum
Aster macrophyllus	Helianthus strumosus	Rosa sp.
Aster sagittifolius	Hepatica acutiloba	Rubus parviflorus
Athyrium angustum	✓ Hepatica americana	Rubus (blackberry)
Botrychium virginianum	Impatiens biflora	Rubus (dewberry)
Brachyelytrum erectum	Linnaea borealis	Sambucus pubens
Carex albursina	Lonicera oblongifolia	Sanguinaria canadensis
Caulophyllum thalictroides	Lupinus perennis	Sanicula gregaria
Chimaphila umbellata	Lycopodium annotinum	Smilacina racemosa
Circaea alpina	Lycopodium complanatum	Smilacina stellata
Circaea latifolia	Lycopodium lucidulum	Smilax ecirrhata
✓ Clintonia borealis	Lycopodium obscurum	Solidago ulmifolia
Coptis trifolia	Lysimachia quadrifolia	Streptopus roseus
Corallorrhiza maculata	✓ Maianthemum canadense	Taxus canadensis
Cornus alternifolia	✓ Mitchella repens	Thalictrum dioicum
Cornus canadensis	Mitella diphylla	Trientalis borealis
Cornus rugosa	Mitella nuda	Trillium grandiflorum
Corylus americana	Monotropa uniflora	Uvularia grandiflora
Corylus cornuta	Myrica asplenifolia	Uvularia sessilifolia
Cypripedium acaule	Onoclea sensibilis	✓ Vaccinium angustifolium
Diervilla lonicera	✓ Oryzopsis asperifolia	Vaccinium pennsylvanicum
Dirca palustris	Osmorhiza claytoni	Viburnum acerifolium
Dryopteris linnaeana	Oxalis montana	Viola canadensis
Dryopteris phegopteris	Phryma leptostachya	Viola cucullata
Dryopteris spinulosa	Polygala pauciflora	Viola pallens
Epifagus virginiana	Polygonatum commutatum	Viola pubescens
Epigaea repens	Polygonatum pubescens	Waldsteinia fragarioides

Ribes sp.

Prunus virg.
Amelanchier

HERB FREQUENCY

NORTHERN PINE-HARDWOODS

Stand No. 3107.
Quadrat No. 12

Actaea pachypoda	Fragaria virginiana	Potentilla simplex
Actaea rubra	Galium lanceolatum	Prenanthes alba
Adiantum pedatum	✓ Galium triflorum	✓ Pteridium aquilinum
Allium tricoccum	Gaultheria procumbens	Pyrola elliptica
✓ Anemone quinquefolia	Gaylussacia baccata	Pyrola rotundifolia
Aquilegia canadensis	Geranium maculatum	Pyrola secunda
Aralia nudicaulis	Geum canadense	Ranunculus recurvatus
Aralia racemosa	Gnaphalium obtusifolium	Rhus radicans
Arisaema atrorubens	Helianthemum sp.	Ribes americanum
Aster macrophyllus	Helianthus strumosus	Rosa sp.
✓ Aster sagittifolius	Hepatica acutiloba	Rubus parviflorus
Athyrium angustum	Hepatica americana	✓ Rubus (blackberry)
Botrychium virginianum	Impatiens biflora	Rubus (dewberry)
Brachyelytrum erectum	Linnaea borealis	Sambucus pubens
Carex albursina	Lonicera oblongifolia	Sanguinaria canadensis
Caulophyllum thalictroides	Lupinus perennis	Sanicula gregaria
Chimaphila umbellata	Lycopodium annotinum	Smilacina racemosa
Circaea alpina	Lycopodium complanatum	Smilacina stellata
Circaea latifolia	Lycopodium lucidulum	Smilax ecirrhata
✓ Clintonia borealis	✓ Lycopodium obscurum	Solidago ulmifolia
Coptis trifolia	Lysimachia quadrifolia	✓ Streptopus roseus
Corallorrhiza maculata	✓ Maianthemum canadense	Taxus canadensis
Cornus alternifolia	Mitchella repens	Thalictrum dioicum
Cornus canadensis	Mitella diphylla	✓ Trientalis borealis
Cornus rugosa	Mitella nuda	Trillium grandiflorum
Corylus americana	Monotropa uniflora	Uvularia grandiflora
Corylus cornuta	Myrica asplenifolia	Uvularia sessilifolia
Cypripedium acaule	Onoclea sensibilis	Vaccinium angustifolium
✓ Diervilla lonicera	Oryzopsis asperifolia	Vaccinium pennsylvanicum
Dirca palustris	Osmorhiza claytoni	Viburnum acerifolium
Dryopteris linnaeana	Oxalis montana	Viola canadensis
Dryopteris phegopteris	Phryma leptostachya	Viola cucullata
Dryopteris spinulosa	Polygala pauciflora	Viola pallens
Epifagus virginiana	Polygonatum commutatum	Viola pubescens
Epigaea repens	Polygonatum pubescens	Waldsteinia fragarioides

HERB FREQUENCY

NORTHERN PINE-HARDWOODS

Stand No. 3107.
Quadrat No. 13

Actaea pachypoda	Fragaria virginiana	Potentilla simplex
Actaea rubra	Galium lanceolatum	Prenanthes alba
Adiantum pedatum	✓ Galium triflorum	Pteridium aquilinum
Allium tricoccum	Gaultheria procumbens	Pyrola elliptica
Anemone quinquefolia	Gaylussacia baccata	Pyrola rotundifolia
Aquilegia canadensis	Geranium maculatum	Pyrola secunda
✓ Aralia nudicaulis	Geum canadense	Ranunculus recurvatus
Aralia racemosa	Gnaphalium obtusifolium	Rhus radicans
Arisaema atrorubens	Helianthemum sp.	Ribes americanum
Aster macrophyllus	Helianthus strumosus	Rosa sp.
Aster sagittifolius	Hepatica acutiloba	Rubus parviflorus
Athyrium angustum	✓ Hepatica americana	✓ Rubus (blackberry)
Botrychium virginianum	Impatiens biflora	Rubus (dewberry)
Brachyelytrum erectum	Linnaea borealis	Sambucus pubens
Carex albursina	Lonicera oblongifolia	Sanguinaria canadensis
Caulophyllum thalictroides	Lupinus perennis	Sanicula gregaria
Chimaphila umbellata	Lycopodium annotinum	Smilacina racemosa
✓ Circaea alpina	Lycopodium complanatum	Smilacina stellata
Circaea latifolia	Lycopodium lucidulum	Smilax ecirrhata
✓ Clintonia borealis	Lycopodium obscurum	Solidago ulmifolia
Coptis trifolia	Lysimachia quadrifolia	✓ Streptopus roseus
Corallorrhiza maculata	✓ Maianthemum canadense	Taxus canadensis
Cornus alternifolia	✓ Mitchella repens	Thalictrum dioicum
Cornus canadensis	Mitella diphylla	Trientalis borealis
Cornus rugosa	Mitella nuda	Trillium grandiflorum
Corylus americana	Monotropa uniflora	Uvularia grandiflora
Corylus cornuta	Myrica asplenifolia	Uvularia sessilifolia
Cypripedium acaule	Onoclea sensibilis	Vaccinium angustifolium
Diervilla lonicera	Oryzopsis asperifolia	Vaccinium pennsylvanicum
Dirca palustris	Osmorhiza claytoni	Viburnum acerifolium
Dryopteris linnaeana	Oxalis montana	Viola canadensis
Dryopteris phegopteris	Phryma leptostachya	Viola cucullata
Dryopteris spinulosa	Polygala pauciflora	Viola pallens
Epifagus virginiana	Polygonatum commutatum	Viola pubescens
Epigaea repens	Polygonatum pubescens	Waldsteinia fragarioides

HERB FREQUENCY

NORTHERN PINE-HARDWOODS

Stand No. 3107
Quadrat No. 14

Actaea pachypoda	Fragaria virginiana	Potentilla simplex
Actaea rubra	Galium lanceolatum	Prenanthes alba
Adiantum pedatum	Galium triflorum	Pteridium aquilinum
Allium tricoccum	Gaultheria procumbens	Pyrola elliptica
✓ Anemone quinquefolia	Gaylussacia baccata	Pyrola rotundifolia
Aquilegia canadensis	Geranium maculatum	Pyrola secunda
✓ Aralia nudicaulis	Geum canadense	Ranunculus recurvatus
Aralia racemosa	Gnaphalium obtusifolium	Rhus radicans
Arisaema atrorubens	Helianthemum sp.	Ribes americanum
✓ Aster macrophyllus	Helianthus strumosus	Rosa sp.
Aster sagittifolius	Hepatica acutiloba	Rubus parviflorus
Athyrium angustum	✓ Hepatica americana	Rubus (blackberry)
Botrychium virginianum	Impatiens biflora	Rubus (dewberry)
Brachyelytrum erectum	Linnaea borealis	Sambucus pubens
Carex albursina	Lonicera oblongifolia	Sanguinaria canadensis
Caulophyllum thalictroides	Lupinus perennis	Sanicula gregaria
Chimaphila umbellata	Lycopodium annotinum	Smilacina racemosa
Circaea alpina	Lycopodium complanatum	Smilacina stellata
Circaea latifolia	Lycopodium lucidulum	Smilax ecirrhata
Clintonia borealis	✓ Lycopodium obscurum	Solidago ulmifolia
Coptis trifolia	Lysimachia quadrifolia	✓ Streptopus roseus
Corallorrhiza maculata	✓ Maianthemum canadense	Taxus canadensis
Cornus alternifolia	✓ Mitchella repens	Thalictrum dioicum
✓ Cornus canadensis	Mitella diphylla	Trientalis borealis
Cornus rugosa	Mitella nuda	Trillium grandiflorum
Corylus americana	Monotropa uniflora	Uvularia grandiflora
✓ Corylus cornuta	Myrica asplenifolia	✓ Uvularia sessilifolia
Cypripedium acaule	Onoclea sensibilis	Vaccinium angustifolium
Diervilla lonicera	✓ Oryzopsis asperifolia	Vaccinium pennsylvanicum
Dirca palustris	Osmorhiza claytoni	Viburnum acerifolium
Dryopteris linnaeana	Oxalis montana	Viola canadensis
Dryopteris phegopteris	Phryma leptostachya	Viola cucullata
Dryopteris spinulosa	Polygala pauciflora	Viola pallens
Epifagus virginiana	Polygonatum commutatum	Viola pubescens
Epigaea repens	Polygonatum pubescens	Waldsteinia fragarioides

HERB FREQUENCY

NORTHERN PINE-HARDWOODS

Stand No. 3107
Quadrat No. 15

Actaea pachypoda	Fragaria virginiana	Potentilla simplex
Actaea rubra	Galium lanceolatum	Prenanthes alba
Adiantum pedatum	Galium triflorum	✓ Pteridium aquilinum
Allium tricoccum	Gaultheria procumbens	Pyrola elliptica
✓ Anemone quinquefolia	Gaylussacia baccata	Pyrola rotundifolia
Aquilegia canadensis	Geranium maculatum	Pyrola secunda
✓ Aralia nudicaulis	Geum canadense	Ranunculus recurvatus
Aralia racemosa	Gnaphalium obtusifolium	Rhus radicans
Arisaema atrorubens	Helianthemum sp.	Ribes americanum
✓ Aster macrophyllus	Helianthus strumosus	Fosa sp.
Aster sagittifolius	Hepatica acutiloba	Rubus parviflorus
Athyrium angustum	✓ Hepatica americana	✓ Rubus (blackberry)
Botrychium virginianum	Impatiens biflora	Rubus (dewberry)
Brachyelytrum erectum	Linnaea borealis	Sambucus pubens
Carex albursina	Lonicera oblongifolia	Sanguinaria canadensis
Caulophyllum thalictroides	Lupinus perennis	Sanicula gregaria
Chimaphila umbellata	Lycopodium annotinum	Smilacina racemosa
Circaea alpina	Lycopodium complanatum	Smilacina stellata
Circaea latifolia	Lycopodium lucidulum	Smilax ecirrhata
Clintonia borealis	Lycopodium obscurum	Solidago ulmifolia
Coptis trifolia	Lysimachia quadrifolia	Streptopus roseus
Corallorrhiza maculata	✓ Maianthemum canadense	Taxus canadensis
Cornus alternifolia	Mitchella repens	✓ Thalictrum dioicum
Cornus canadensis	Mitella diphylla	✓ Trientalis borealis
Cornus rugosa	Mitella nuda	Trillium grandiflorum
Corylus americana	Monotropa uniflora	Uvularia grandiflora
Corylus cornuta	Myrica asplenifolia	Uvularia sessilifolia
Cypripedium acaule	Onoclea sensibilis	Vaccinium angustifolium
Diervilla lonicera	✓ Oryzopsis asperifolia	Vaccinium pennsylvanicum
Dirca palustris	Osmorhiza claytoni	Viburnum acerifolium
Dryopteris linnaeana	Oxalis montana	Viola canadensis
Dryopteris phegopteris	Phryma leptostachya	Viola cucullata
Dryopteris spinulosa	Polygala pauciflora	Viola pallens
Epifagus virginiana	Polygonatum commutatum	Viola pubescens
Epigaea repens	✓ Polygonatum pubescens	Waldsteinia fragarioides

Actaea sp.

HERB FREQUENCY

NORTHERN PINE-HARDWOODS

Stand No.

3107.

Quadrat No. 16

Actaea pachypoda	Fragaria virginiana	Potentilla simplex
Actaea rubra	Galium lanceolatum	Prenanthes alba
Adiantum pedatum	Galium triflorum	Pteridium aquilinum
Allium tricoccum	Gaultheria procumbens	Pyrola elliptica
Anemone quinquefolia	Gaylussacia baccata	Pyrola rotundifolia
Aquilegia canadensis	Geranium maculatum	Pyrola secunda
Aralia nudicaulis	Geum canadense	Ranunculus recurvatus
Aralia racemosa	Gnaphalium obtusifolium	Rhus radicans
Arisaema atrorubens	Helianthemum sp.	Ribes americanum
Aster macrophyllus	Helianthus strumosus	Rosa sp.
Aster sagittifolius	Hepatica acutiloba	Rubus parviflorus
Athyrium angustum	Hepatica americana	Rubus (blackberry)
Botrychium virginianum	Impatiens biflora	Rubus (dewberry)
Brachyelytrum erectum	Linnaea borealis	Sambucus pubens
Carex albursina	Lonicera oblongifolia	Sanguinaria canadensis
Caulophyllum thalictroides	Lupinus perennis	Sanicula gregaria
Chimaphila umbellata	Lycopodium annotinum	Smilacina racemosa
Circaea alpina	Lycopodium complanatum	Smilacina stellata
Circaea latifolia	Lycopodium lucidulum	Smilax ecirrhata
Clintonia borealis	Lycopodium obscurum	Solidago ulmifolia
Coptis trifolia	Lysimachia quadrifolia	Streptopus roseus
Corallorrhiza maculata	Maianthemum canadense	Taxus canadensis
Cornus alternifolia	Mitchella repens	Thalictrum dioicum
Cornus canadensis	Mitella diphylla	Trientalis borealis
Cornus rugosa	Mitella nuda	Trillium grandiflorum
Corylus americana	Monotropa uniflora	Uvularia grandiflora
Corylus cornuta	Myrica asplenifolia	Uvularia sessilifolia
Cypripedium acaule	Onoclea sensibilis	Vaccinium angustifolium
Diervilla lonicera	Oryzopsis asperifolia	Vaccinium pennsylvanicum
Dirca palustris	Osmorhiza claytoni	Viburnum acerifolium
Dryopteris linnaeana	Oxalis montana	Viola canadensis
Dryopteris phegopteris	Phryma leptostachya	Viola cucullata
Dryopteris spinulosa	Polygala pauciflora	Viola pallens
Epifagus virginiana	Polygonatum commutatum	Viola pubescens
Epigaea repens	Polygonatum pubescens	Waldsteinia fragarioides

HERB FREQUENCY

NORTHERN PINE-HARDWOODS

Stand No. 3107
Quadrat No. 17

Actaea pachypoda	Fragaria virginiana	Potentilla simplex
Actaea rubra	Galium lanceolatum	Prenanthes alba
Adiantum pedatum	Galium triflorum	Pteridium aquilinum
Allium tricoccum	Gaultheria procumbens	Pyrola elliptica
Anemone quinquefolia	Gaylussacia baccata	Pyrola rotundifolia
Aquilegia canadensis	Geranium maculatum	Pyrola secunda
Aralia nudicaulis	Geum canadense	Ranunculus recurvatus
Aralia racemosa	Gnaphalium obtusifolium	Rhus radicans
Arisaema atrorubens	Helianthemum sp.	Ribes americanum
Aster macrophyllus	Helianthus strumosus	Rosa sp.
Aster sagittifolius	Hepatica acutiloba	Rubus parviflorus
Athyrium angustum	Hepatica americana	✓ Rubus (blackberry)
Botrychium virginianum	Impatiens biflora	Rubus (dewberry)
Brachyelytrum erectum	Linnaea borealis	Sambucus pubens
Carex albursina	Lonicera oblongifolia	Sanguinaria canadensis
Caulophyllum thalictroides	Lupinus perennis	Sanicula gregaria
Chimaphila umbellata	Lycopodium annotinum	Smilacina racemosa
Circaea alpina	Lycopodium complanatum	Smilacina stellata
Circaea latifolia	Lycopodium lucidulum	Smilax ecirrhata
Clintonia borealis	✓ Lycopodium obscurum	Solidago ulmifolia
Coptis trifolia	Lysimachia quadrifolia	Streptopus roseus
Corallorrhiza maculata	✓ Maianthemum canadense	Taxus canadensis
Cornus alternifolia	Mitchella repens	✓ Thalictrum dioicum
Cornus canadensis	Mitella diphylla	Trientalis borealis
Cornus rugosa	Mitella nuda	Trillium grandiflorum
Corylus americana	Monotropa uniflora	Uvularia grandiflora
Corylus cornuta	Myrica asplenifolia	Uvularia sessilifolia
Cypripedium acaule	Onoclea sensibilis	Vaccinium angustifolium
Diervilla lonicera	Oryzopsis asperifolia	Vaccinium pennsylvanicum
Dirca palustris	Osmorhiza claytoni	Viburnum acerifolium
Dryopteris linnaeana	Oxalis montana	Viola canadensis
Dryopteris phegopteris	Phryma leptostachya	Viola cucullata
✓ Dryopteris spinulosa	Polygala pauciflora	Viola pallens
Epifagus virginiana	Polygonatum commutatum	Viola pubescens
Epigaea repens	✓ Polygonatum pubescens	Waldsteinia fragarioides

HERB FREQUENCY

NORTHERN PINE-HARDWOODS

Stand No. 3107
Quadrat No. 18

Actaea pachypoda	Fragaria virginiana	Potentilla simplex
Actaea rubra	Galium lanceolatum	Prenanthes alba
Adiantum pedatum	✓ Galium triflorum	✓ Pteridium aquilinum
Allium tricoccum	Gaultheria procumbens	Pyrola elliptica
Anemone quinquefolia	Gaylussacia baccata	Pyrola rotundifolia
Aquilegia canadensis	Geranium maculatum	Pyrola secunda
Aralia nudicaulis	Geum canadense	Ranunculus recurvatus
Aralia racemosa	Gnaphalium obtusifolium	Rhus radicans
Arisaema atrorubens	Helianthemum sp.	Ribes americanum
✓ Aster macrophyllus	Helianthus strumosus	Rosa sp.
Aster sagittifolius	Hepatica acutiloba	Rubus parviflorus
Athyrium angustum	✓ Hepatica americana	✓ Rubus (blackberry)
Botrychium virginianum	Impatiens biflora	Rubus (dewberry)
Brachyelytrum erectum	Linnaea borealis	Sambucus pubens
Carex albursina	Lonicera oblongifolia	Sanguinaria canadensis
Caulophyllum thalictroides	Lupinus perennis	Sanicula gregaria
Chimaphila umbellata	Lycopodium annotinum	Smilacina racemosa
✓ Circaea alpina	Lycopodium complanatum	Smilacina stellata
Circaea latifolia	Lycopodium lucidulum	Smilax ecirrhata
✓ Clintonia borealis	✓ Lycopodium obscurum	Solidago ulmifolia
Coptis trifolia	Lysimachia quadrifolia	✓ Streptopus roseus
Corallorrhiza maculata	✓ Maianthemum canadense	Taxus canadensis
Cornus alternifolia	Mitchella repens	Thalictrum dioicum
Cornus canadensis	Mitella diphylla	Trientalis borealis
Cornus rugosa	Mitella nuda	Trillium grandiflorum
Corylus americana	Monotropa uniflora	Uvularia grandiflora
Corylus cornuta	Myrica asplenifolia	Uvularia sessilifolia
Cypripedium acaule	Onoclea sensibilis	Vaccinium angustifolium
Diervilla lonicera	✓ Oryzopsis asperifolia	Vaccinium pennsylvanicum
Dirca palustris	✓ Osmorhiza claytoni	Viburnum acerifolium
Dryopteris linnaeana	Oxalis montana	Viola canadensis
Dryopteris phegopteris	Phryma leptostachya	Viola cucullata
✓ Dryopteris spinulosa	Polygala pauciflora	Viola pallens
Epifagus virginiana	Polygonatum commutatum	Viola pubescens
Epigaea repens	Polygonatum pubescens	Waldsteinia fragarioides

lactuca sp.
Raspberry

HERB FREQUENCY

NORTHERN PINE-HARDWOODS

Stand No. 3107
Quadrat No. 17

Actaea pachypoda	Fragaria virginiana	Potentilla simplex
Actaea rubra	Galium lanceolatum	Prenanthes alba
Adiantum pedatum	✓ Galium triflorum	Pteridium aquilinum
Allium tricoccum	Gaultheria procumbens	Pyrola elliptica
Anemone quinquefolia	Gaylussacia baccata	Pyrola rotundifolia
Aquilegia canadensis	Geranium maculatum	Pyrola secunda
Aralia nudicaulis	Geum canadense	Ranunculus recurvatus
Aralia racemosa	Gnaphalium obtusifolium	Rhus radicans
Arisaema atrorubens	Helianthemum sp.	Ribes americanum
✓ Aster macrophyllus	Helianthus strumosus	Rosa sp.
Aster sagittifolius	Hepatica acutiloba	Rubus parviflorus
Athyrium angustum	Hepatica americana	Rubus (blackberry)
Botrychium virginianum	✓ Impatiens biflora <i>sp.</i>	Rubus (dewberry)
Brachyelytrum erectum	Linnaea borealis	Sambucus pubens
Carex albursina	Lonicera oblongifolia	Sanguinaria canadensis
Caulophyllum thalictroides	Lupinus perennis	Sanicula gregaria
Chimaphila umbellata	Lycopodium annotinum	Smilacina racemosa
✓ Circaea alpina	Lycopodium complanatum	Smilacina stellata
Circaea latifolia	Lycopodium lucidulum	Smilax ecirrhata
✓ Clintonia borealis	Lycopodium obscurum	Solidago ulmifolia
Coptis trifolia	Lysimachia quadrifolia	✓ Streptopus roseus
Corallorrhiza maculata	✓ Maianthemum canadense	Taxus canadensis
Cornus alternifolia	Mitchella repens	Thalictrum dioicum
Cornus canadensis	Mitella diphylla	✓ Trientalis borealis
Cornus rugosa	Mitella nuda	Trillium grandiflorum
Corylus americana	Monotropa uniflora	Uvularia grandiflora
Corylus cornuta	Myrica asplenifolia	Uvularia sessilifolia
Cypripedium acaule	Onoclea sensibilis	Vaccinium angustifolium
Diervilla lonicera	Oryzopsis asperifolia	Vaccinium pennsylvanicum
Dirca palustris	Osmorhiza claytoni	Viburnum acerifolium
Dryopteris linnaeana	Oxalis montana	Viola canadensis
Dryopteris phegopteris	Phryma leptostachya	Viola cucullata
✓ Dryopteris spinulosa	Polygala pauciflora	Viola pallens
Epifagus virginiana	Polygonatum commutatum	Viola pubescens
Epigaea repens	Polygonatum pubescens	Waldsteinia fragarioides

Raspberry

HERB FREQUENCY

NORTHERN PINE-HARDWOODS

Stand No. 3107.
Quadrat No. 20

Actaea pachypoda	Fragaria virginiana	Potentilla simplex
Actaea rubra	Galium lanceolatum	Prenanthes alba
Adiantum pedatum	✓ Galium triflorum	Pteridium aquilinum
Allium tricoccum	Gaultheria procumbens	Pyrola elliptica
✓ Anemone quinquefolia	Gaylussacia baccata	Pyrola rotundifolia
Aquilegia canadensis	Geranium maculatum	Pyrola secunda
Aralia nudicaulis	Geum canadense	Ranunculus recurvatus
Aralia racemosa	Gnaphalium obtusifolium	Rhus radicans
Arisaema atrorubens	Helianthemum sp.	Ribes americanum
✓ Aster macrophyllus	Helianthus strumosus	Rosa sp.
Aster sagittifolius	Hepatica acutiloba	Rubus parviflorus
Athyrium angustum	✓ Hepatica americana	✓ Rubus (blackberry)
Botrychium virginianum	Impatiens biflora	Rubus (dewberry)
Brachyelytrum erectum	Linnaea borealis	Sambucus pubens
Carex albursina	Lonicera oblongifolia	Sanguinaria canadensis
Caulophyllum thalictroides	Lupinus perennis	Sanicula gregaria
Chimaphila umbellata	Lycopodium annotinum	Smilacina racemosa
Circaea alpina	Lycopodium complanatum	Smilacina stellata
Circaea latifolia	Lycopodium lucidulum	Smilax ecirrhata
Clintonia borealis	✓ Lycopodium obscurum	Solidago ulmifolia
✓ Coptis trifolia	Lysimachia quadrifolia	✓ Streptopus roseus
Corallorrhiza maculata	✓ Matanthemum canadense	Taxus canadensis
Cornus alternifolia	Mitchella repens	Thalictrum dioicum
✓ Cornus canadensis	Mitella diphylla	Trientalis borealis
Cornus rugosa	Mitella nuda	Trillium grandiflorum
Corylus americana	Monotropa uniflora	Uvularia grandiflora
✓ Corylus cornuta	Myrica asplenifolia	Uvularia sessilifolia
Cypripedium acaule	Onoclea sensibilis	Vaccinium angustifolium
Diervilla lonicera	Oryzopsis asperifolia	Vaccinium pennsylvanicum
Dirca palustris	Osmorhiza claytoni	Viburnum acerifolium
Dryopteris linnaeana	Oxalis montana	Viola canadensis
Dryopteris phegopteris	Phryma leptostachya	Viola cucullata
Dryopteris spinulosa	Polygala pauciflora	Viola pallens
Epifagus virginiana	Polygonatum commutatum	Viola pubescens
Epigaea repens	Polygonatum pubescens	Waldsteinia fragarioides

~~Vaccinium~~
Ribes cynosbati

Vaccinium canadense

Prunus birg.

TABULATION FORM

NORTHERN PINE-HARDWOODS

Stand No. 3107

STATION NO.	P.	1	2	3	4	5	6	7	8	9	10	11	12	13	14	15	16	17	18	19	20	T	
<i>Prenanthes alba</i>	✓																						1
<i>Prunella vulgaris</i>																							
<i>Pteretis pennsylvanica</i>																							
<i>Pteridium aquilinum</i>	✓	✓	✓	✓	✓	✓	✓	✓	✓	✓	✓	✓	✓	✓	✓	✓	✓	✓	✓	✓	✓	✓	840
<i>Pyrola asarifolia</i>																							
<i>Pyrola elliptica</i>																							
<i>Pyrola minor</i>	✓																						1
<i>Pyrola rotundifolia</i>																							
<i>Pyrola secunda</i>	✓																						1
<i>Pyrola virens</i>																							1
<i>Ranunculus abortivus</i>																							
<i>Ranunculus recurvatus</i>																							
<i>Ranunculus septentrionalis</i>																							
<i>Rhus radicans</i>																							
<i>Rhus typhina</i>																							
<i>Ribes americanum</i> sp.	✓										✓												15
<i>Ribes cynosbati</i>																						✓	15
<i>Ribes lacustre</i>																							
<i>Ribes triste</i>																							
<i>Rosa</i> sp.																							
<i>Rubus idaeus</i>																							
<i>Rubus parviflorus</i>																							
<i>Rubus hispidus</i>																							
<i>Rubus</i> - blackberry	✓									✓		✓	✓	✓	✓	✓	✓	✓	✓	✓	✓	✓	630
<i>Rubus</i> - dewberry	✓					✓				✓													210
<i>Rubus</i> - raspberry	✓																			✓	✓	✓	210
<i>Salix</i> sp.																							
<i>Sambucus canadensis</i>																							
<i>Sambucus pubens</i>																							
<i>Sanguinaria canadensis</i>					✓																		
<i>Sanicula gregaria</i>																							
<i>Sanicula marilandica</i>																							
<i>Schizachne purpurascens</i>	✓									✓													15
<i>Scutellaria lateriflora</i>																							
<i>Senecio aureus</i>																							
<i>Shepherdia canadensis</i>																							
<i>Smilacina racemosa</i>	✓	✓																					15
<i>Smilacina stellata</i>																							
<i>Smilax ecirrhata</i>																							
<i>Smilax herbacea</i>																							
<i>Smilax hispida</i>																							
<i>Solidago canadensis</i>																							
<i>Solidago flexicaulis</i>																							
<i>Solidago ulmifolia</i>																							
<i>Spiraea alba</i>																							
<i>Stellaria longifolia</i>																							
<i>Streptopus amplexifolius</i>																							
<i>Streptopus roseus</i>	✓					✓						✓	✓	✓					✓	✓	✓	✓	735
<i>Symphoricarpos albus</i>																							
<i>Taxus canadensis</i>																							
<i>Thalictrum dioicum</i>	✓	✓				✓					✓					✓	✓						525

PRESENCE LIST

NORTHERN PINE-HARDWOODS

STAND NO. 3106:

Abies balsamea
 Acer rubrum
 Acer saccharum
 Acer spicatum
Amelanchier sp.
 Betula lutea
 Betula papyrifera
Caprinus caroliniana
Carya cordiformis
Crategeus sp.
Fagus grandiflora
Fraxinus americana
Fraxinus nigra

Fraxinus pennsylvanica
Juglans cinerea
Larix laricina
Ostrya virginiana
 Picea glauca
Pinus banksiana
 Pinus resinosa
 Pinus strobus
Populus balsamifera
Populus grandidentata
 Populus tremuloides
Prunus pennsylvanica
 Prunus serotina

Prunus virginiana
Quercus alba
Quercus ellipsoidalis
Quercus macrocarpa
 Quercus rubra
Sorbus decora
Thuja occidentalis
 Tilia americana
Tsuga canadensis
Ulmus americana
Ulmus fulva

HERBS AND SHRUBS

Actaea pachypoda
 Actaea rubra
Adiantum pedatum
Agrimonia gryposepala
Allium tricoccum
Alnus rugosa
Amphicarpa bracteata
Anemone canadensis
 Anemone quinquefolia
Antennaria sp.
 Apocynum androsaemifolium
Apocynum cannabinum
 Aquilegia canadensis
 Aralia nudicaulis
 Aralia racemosa
Arctostaphylos uva-ursi
Arisaema atrorubens
Asarum canadense
Asclepias phytolaccoides
Aster cordifolius
Aster lateriflorus
 Aster macrophyllus
Aster prenanthoides
Aster sagittifolius
Aster shortii
Aster umbellatus
 Athyrium angustum
Aureolaria pedicularia
Boehmeria cylindrica
Botrychium virginianum
 Brachyelytrum erectum
Bromus purgans
Campanula americana
Carex albursina
Carex pennsylvanica
Caulophyllum thalictroides
Celastrus scandens
Chimaphila umbellata
Chiogenes hispidula

Circaea alpina
Circaea latifolia
Claytonia caroliniana
Claytonia virginiana
 Clintonia borealis
Convolvulus spithameus
Coptis trifolia
Corallorrhiza maculata
Corallorrhiza striata
Cornus alternifolia
 Cornus canadensis
Cornus femina
Cornus rugosa
Corylus americana
 Corylus cornuta
Cryptotaenia canadensis
Cypripedium acaule
Cypripedium pubescens
Cystopteris fragilis
Danthonia spicata
Dentaria diphylla
Desmodium glutinosum
Desmodium nudiflorum
Dicentra canadensis
Dicentra cucullaria
 Diervilla lonicera
Dirca palustris
Dryopteris linneana
Dryopteris phegopteris
 Dryopteris spinulosa
Epifagus virginiana
Epigaea repens
Equisetum arvense
Erythronium americanum
 Fragaria virginiana
Galium aparine
Galium boreale
Galium circaeans
Galium concinnum

Galium lanceolatum
 Galium triflorum
 Gaultheria procumbens
Gaylussacia baccata
 Geranium maculatum
Geum canadense
Gnaphalium obtusifolium
Goodyera pubescens
Goodyera repens
Habenaria bracteata
Hamamelis virginiana
Helianthus strumosus
Hepatica acutiloba
Hepatica americana
Hieracium canadense
Hydrophyllum virginianum
Hystrix patula
Impatiens biflora
Lactuca canadensis
Laporteia canadensis
Lappula virginica
Lathyrus ochroleucus
Ledum groenlandicum
 Linnaea borealis
Lonicera canadensis
 Lonicera hirsuta
 Lonicera oblongifolia
Lonicera prolifera
Luzula multiflora
Lycopodium annotinum
Lycopodium clavatum
Lycopodium complanatum
Lycopodium lucidulum
 Lycopodium obscurum
Lycopodium tristachyum
Lycopus americanus
Lycopus uniflora
Lysimachia quadrifolia
 Maianthemum canadense

- | | | |
|--------------------------|----------------------------|--------------------------|
| Melampyrum lineare | Pyrola elliptica | Smilax herbacea |
| ✓ Mitchellia repens | Pyrola rotundifolia | Smilax hispida |
| Mitella diphylla | ✓ Pyrola secunda | Solidago latifolia |
| Mitella nuda | Ranunculus abortivus | Solidago ulmifolia |
| Monarda fistulosa | Ranunculus recurvatus | Streptopus amplexifolius |
| ✓ Moneses uniflora | Ranunculus septentrionalis | ✓ Streptopus roseus |
| Monotropa uniflora | Rhus radicans | Taxus canadensis |
| Myrica asplenifolia | Rhus typhina | ✓ Thalictrum dioicum |
| Onoclea sensibilis | Ribes americanum | Tiarella cordifolia |
| ✓ Oryzopsis asperifolia | Ribes cynosbati | ✓ Trientalis borealis |
| ✓ Osmorhiza claytoni | Ribes lacustre | Trillium cernuum |
| Osmunda cinnamomea | Ribes triste | ✓ Trillium grandiflorum |
| Osmunda claytoniana | Rubus idaeus | Uvularia grandiflora |
| Oxalis montana | Rubus parviflorus | ✓ Uvularia sessilifolia |
| Panax quinquefolia | Rubus hispidus | Vaccinium angustifolium |
| Parietaria pennsylvanica | ✓ Rubus - blackberry | Vaccinium pennsylvanicum |
| Parthenocissus vitacea | Rubus - dewberry | Viburnum acerifolium |
| Pedicularis lanceolata | ✓ Rubus - raspberry | ✓ Viburnum affine |
| Phyrma leptostachya | Sambucus canadensis | Viburnum lentago |
| Podophyllum peltatum | Sambucus pubens | Viola canadensis |
| Polemonium reptans | Sanguinaria canadensis | Viola cucullata |
| ✓ Polygala pauciflora | Sanicula gregaria | Viola incognita |
| Polygonatum commutatum | ✓ Schizachne purpurascens | Viola pallens |
| ✓ Polygonatum pubescens | Scutellaria lateriflora | ✓ Viola pubescens |
| Potentilla simplex | Shepherdia canadensis | Vitis aestivalis |
| ✓ Prenanthes alba | ✓ Smilacina racemosa | Vitis riparia |
| Pteretis nodulosa | Smilacina stellata | Waldsteinia fragarioides |
| ✓ Pteridium aquilinum | Smilax ecirrhata | Zanthoxylum americanum |

Additional Species:

Pyrola minor ?
Ilex verticillata

THE CORTICOLOUS VEGETATION OF THE NORTHERN WISCONSIN UPLAND
 Data collected by William L. Culberson, Summers 1952-1953.

From a 40-tree sample, the continuum index of this stand is 1578
 Abbreviations in the data sheet refer to the following species:

- | | | |
|---------------------------|-------------------------|--------------------------|
| Alectoria nidulifera | Parmelia saxatilis | (Bryophytes) |
| Allarthonia caesia | Parmelia subaurifera | |
| Anaptychia palmatula | Parmelia subquercifolia | Amblystegium varium |
| Anaptychia speciosa | Parmelia sulcata | Anomodon attenuatus |
| Arthonia radiata | Parmelia trichotera | Anomodon minor |
| Bacidia chlorococca | Parmeliopsis ambigua | Anomodon rostratus |
| Bacidia fuscorubella | Parmeliopsis hyperopta | Anomodon tristis |
| Bacidia sp. | Parmeliopsis placorodia | Bazzania trilobata |
| Buellia punctata | Peltigera canina | Brachythecium sp. |
| Buellia stillingiana | Pertusaria sp. | Brotherella recurvans |
| Caloplaca aurantiaca | Physcia aipolia | Campylium hispidulum |
| Caloplaca cerina | Physcia ascendens | Chamberlainia acuminata |
| Caloplaca sp. | Physcia ciliata | Dicranum flagellare |
| Candelaria concolor | Physcia grisea | Dicranum montanum |
| Candelaria fibrosa | Physcia millegrana | Dicranum sp. |
| Cetraria atlantica | Physcia orbicularis | Entodon sp. |
| Cetraria ciliaris | Physcia syncolla | Eurhynchium serrulatum |
| Cetraria fendleri | Physcia tribaccoides | Eurhynchium strigosum |
| Cetraria oakesiana | Pyrenula leucoplaca | Frullania asagrayana |
| Cetraria pinastri | Pyrenula nitida | Frullania bolanderi |
| Cladonia botrytes | Pyxine soredata | Frullania eboracensis |
| Cladonia cenotea | Ramalina fastigiata | Heterophyllum |
| Cladonia chlorophaea | Ramalina pollinaria | haldanianum |
| Cladonia coniocraea | Rinodina halei | Hypnum reptile |
| Cladonia cristatella | Rinodina papillata | Hypnum sp. |
| Cladonia verticillata | Rinodina sp. | Jamesoniella autumnalis |
| Collema subfurvum | Trypethelium virens | Leskea sp. |
| Conotrema urceolatum | Usnea sp. | Leucodon sciuroides |
| Evernia mesomorpha | Xanthoria fallax | Lindbergia brachyptera |
| Graphis scripta | Xanthoria polycarpa | var. austinii |
| Lecanora pallida | | Lophocolea heterophylla |
| Lecanora subfusca | | Mnium cuspidatum |
| Lecanora varia | | Mnium spinulosum |
| Lecidea berengeriana | | Neckera pennata |
| Lecidea nylanderi | | Orthotrichum sp. |
| Lecidea vernalis | | Plagiochila asplenioides |
| Lepraria aeruginosa | | Plagiothecium sp. |
| Leptorhaphis epidermidis | | Platygyrium repens |
| Le sym - unknown crustose | | Porella platy- |
| Lobaria pulmonaria | | phylloidea |
| Lobaria quercizans | | Ptilidium pulcherrimum |
| Normandina pulchella | | Pylasia sp. |
| Ochrolechia pallescens | | Radula complanata |
| Opegrapha varia | | Tetraphis pellucida |
| Parmelia andreana | | Thuidium delicatulum |
| Parmelia aurulenta | | Ulota crispa |
| Parmelia borrieri | | |
| Parmelia caperata | | |
| Parmelia cetrarioides | | |
| Parmelia crinita | | |
| Parmelia physodes | | |
| Parmelia rudecta | | |

Ecology Laboratory
 University of Wisconsin
 Madison

Cryptogam Summary. DBH Level ~~Base~~. W.L.Culberson. Stand No. 3107...

No. trees	2	1						27	2			2				6	49				
	Ac rub	Ac sac	Be lut	Be pap	Fa gra	Os vir	Pi ban	Pi res	Pi str	Po gra	Po tre	Pr ser	Qu alb	Qu ell	Qu rub	Tl ame	Ts can	Ul ame	Abies	Total	Frequence
Al nid								20												20	50
An spe															1					1	3
Ba chl			1					24											3	28	70
Bu pun								2											1	3	8
Cn con	1																			1	3
Ce atl								18												18	45
Ce cil	1							18												19	48
Cl chl								3												3	8
Cl con								17												17	43
Cr neg	2		1					25			1				2				6	37	93
Ev mes	2							21							1					24	60
Le sub								17		2									1	20	50
Le sym																			2	2	5
Le var																			1	1	3
Li ver																			2	2	5
Pa and								2												2	5
Pa aur	1																			1	3
Pa cap	2							21							1				3	27	68
Pa phy								22												22	55
Pa rud								10											2	12	30
Pa sax	2							16						1						19	48
Pa s-a	1									1									2	4	10
Pa s-q	1													2						3	8
Pa sul	2							18						2					1	23	58
Ph aip											1									1	3
Ph gri											1									1	3
Ph orb	1										1				1					3	8
Px sor																			1	1	3
Ra fas															1				1	2	5
Us sp.								21												21	53
	16		2					275			7				12				26	398	
Di mon								10												10	25
Fr asa																			1	1	3
Fr ebo	2									2					2				3	9	23
Or sp.										2										2	5
Pl rep	1							2							2				1	6	15
Pt pul								7												7	18
Py sp.										2										2	5
Ul cri															1					1	3
	3		0					19			6				5				5	38	