



# LIBRARIES

UNIVERSITY OF WISCONSIN-MADISON

## **The daily cardinal. Vol. XXXVII, No. 75 December 18, 1927**

Madison, Wisconsin: University of Wisconsin, December 18, 1927

<https://digital.library.wisc.edu/1711.dl/YSX6ORO7MD6K38E>

<http://rightsstatements.org/vocab/InC/1.0/>

The libraries provide public access to a wide range of material, including online exhibits, digitized collections, archival finding aids, our catalog, online articles, and a growing range of materials in many media.

When possible, we provide rights information in catalog records, finding aids, and other metadata that accompanies collections or items. However, it is always the user's obligation to evaluate copyright and rights issues in light of their own use.

**WEATHER**

Mostly fair Sunday and Monday; continued cold today but warmer Monday.

# The Daily Cardinal

**PHONES**

Editorial .....B. 250  
Business .....B.6606  
Night .....B.1137

VOL. XXXVII, No. 75

UNIVERSITY OF WISCONSIN, MADISON SUNDAY, DEC. 18, 1927

PRICE 5 CENTS

## The World's Window

By S. H.

**A**FTER THE CHRISTMAS recess this column will be run on an entirely different basis. Instead of presenting a summary of the significant events of the week, we shall devote this space to comment on the news.

The original purpose of this column was to create interest in national and international affairs—among that part of the student body which is blissfully ignorant of what is going on outside of Madison, Wis. However, the comparatively unattractive title of this column or the fact that alternate paragraphs are not set in light and bold face, or the matter of fact style in which it is written has evidently resulted in a lack of interest.

We have no desire to fill up space with material that nobody reads. Likewise, we see no purpose in continuing if our only followers are those who read newspapers anyhow and merely want to determine whether or not we are writing the truth. So we shall undertake to comment. Inasmuch as our opinions are not particularly tame, many readers will disagree. You are heartily invited to argue with us. The Cardinal knows from experience that nothing can create interest like an argument.

We sincerely hope that our efforts during the past two months have after all induced at least a few students to keep in touch with the outside world. One of our first observations is that college students are, as a rule, too detached from present day affairs. Lack of time is no valid excuse for ignorance of what is going on in a world in which history is being made faster than ever before. There are few courses in this university which cannot be better appreciated with a knowledge of the current trend of events.

**WE SHOULD NOW** like to round out our news summary and suggest what might be well to follow during the next two or three weeks.

The activities of congress here, for the present, silenced the talk about presidential possibilities. Far be it from us to decry this lull. However, it is probably short-lived. So-and-so banners, buttons, posters, and talk will not be long in coming.

**WILLIAM RANDOLPH HEARST** revealed before a senatorial investigating committee that the recipients of a Mexican fund of over \$1,000,000 were Senators La Follette, Borah, Norris, and Heflin. Mr. Hearst had previously published in some of his papers a set of documents which were purported to have been taken from Mexican archives. These papers revealed all sorts of sinister plots against the United States. All the above senators, as well as Dudley F. Malone, mentioned as the "financial agent," have denied any knowledge of the whole affair. No evidence has been found which proves the documents genuine, but much has been uncovered tending to show them false. It is safe to say that so far as Mexican and American officials are concerned the affair is a hoax.

**THE HOUSE** of representatives went beyond President Coolidge's tax reduction limit and passed a bill providing for a cut aggregating almost \$290,000,000. The administration is firmly convinced that reduction should not go lower than \$225,000,000. The senate or the president will probably make a downward revision. The large cut was made possible by lowering the taxes on corporations with incomes of less than \$15,000 and by repealing the 3 per cent rate tax on sales of automobiles.

**A NUMBER** of other events are worth watching. The coal strikes in Pennsylvania and Colorado are far from settled. The operators refused Secretary of Labor Davis' invitation to a parley, and the situation has consequently taken a turn for the worse. The Polish-Lithuanian argument, although nominally settled, has by no means been definitely disposed. The state of Oklahoma is in a bad way with the legislature impeaching the governor and the chief justice, and the latter gentlemen simply refusing to be impeached and backing up their refusal with state troops.

## Students, Faculty Meet Tonight To Celebrate Festival of Christmas

### Carollers to Sing in Latin Quarter Following Festival in Gym

Christmas comes to the campus tonight at 7:30 o'clock when students and faculty will gather in the men's gymnasium for the first University Christmas festival. An impressive program, studded with the best talent the university can offer, is free because that same university has lent financial backing to the festival—not only the first at the University of Wisconsin, but the first of its kind at any state university in America.

The Wisconsin Men's Glee club, intercollegiate champions, the Wisconsin Players, and the Wisconsin Women's Glee club are some of the well-known organizations represented on the program. Prof. F. W. Roe, department of English, Prof. E. B. Gordon, school of music, Herman Wirka '28, and Helen Ann Hughes '28, Wisconsin Players' stars, are some of the persons on the program.

**Candles to Greet Carollers**  
Thirty crippled children from Wisconsin General hospital, all that are able to be moved from their beds of the 100 confined there, will attend the festival. Six student sedans will call for them in time to make them among the early arrivals after the doors open at 6:30 o'clock.

Candles flickering in numerous windows will greet the groups of student carollers who will visit the Latin district and University avenue district, following the festival. One group, going through the highways and by-ways near Langdon street, will conclude by singing for Gov. Fred R. Zimmerman. The other group will bring a touch of Christmas to students in the infirmary, hospital patients, and residents of the University heights, near the home of President Glenn Frank. A nucleus of trained singers in each group will invite others to join in spreading the Christmas.

### TROUTMAN ISSUES SECOND CALL FOR CAST OF 'POOR NUT'

Desirous of picking the principals for his cast for "The Poor Nut" before vacation, Prof. W. Troutman last night issued his second call for prospective actors. "The Poor Nut" will be presented by Wisconsin University Players as the pre-prom play.

"Since vacation cuts our rehearsal time by two, I am anxious to assign parts now, so that the persons chosen can work on their lines and return ready to plunge into active rehearsals," said Prof. Troutman. "I expect to choose the main characters Tuesday night, but preliminary tryouts will be held Monday and Tuesday afternoons at 4:30 o'clock and Monday evening at 7 o'clock."

The title part requires a man capable of acting as if he were submerged in study, and who can be shy toward women. Opposite him must be a woman of quiet and helpful nature, an understanding and kind-hearted girl.

### Slogan Chairman Announces \$5 Prize; Set Jan. 11 Deadline

Slogans for the 1929 junior prom will be received until Tuesday, Jan. 11, it was announced yesterday by Margaret Casterline, chairman of the slogan committee.

Just as last year, the winner will receive \$5 for his efforts. A slogan somewhat of the type of those for past proms, examples of which are: "The Prom of the New Wisconsin," "The Prom to Remember," and last year's label, "Wisconsin's Prom, Wisconsin's Pride," has been suggested by Miss Casterline.

"We want slogans to be similar to those of the past in that they will be short. However," the chairman added, "we want them to be original and different in subject matter."

The contest will close at 6 o'clock Tuesday evening, Jan. 10, and all contestants must have their contributions in the hands of Miss Casterline by that time.

### Pres. Frank Expresses Keen Interest in Plans For Festival Tonight

President Glenn Frank of the university not only obtained funds for financing the Christmas festival to-day but issued the following statement concerning the program:

"I am keenly interested in the plans that are being made for an all-university Christmas festival in which all the students and student organizations are to participate before they part for the holidays.

"In a modern university, we are always in danger of losing that sense of intellectual and spiritual community without which the individual student may become ingrown and limited in sympathy and outlook. This Christmas festival will give us a chance to participate in the sacrament of a common appreciation."

### Haresfoot Tour Begins Monday

#### Complete Itinerary Includes 15 Cities in Three States; 76 Make Trip

Tomorrow night at 10 o'clock, the Haresfoot club of the University of Wisconsin will leave on its thirtieth annual tour, a tour that will carry it through three middle western states and to 15 cities. Seventy-six men will make the trip.

The complete itinerary includes: Oshkosh, Dec. 20; Appleton, Dec. 21; Manitowoc, Dec. 22; Sheboygan, Dec. 23; Milwaukee, Dec. 24; Racine, Dec. 26; Kenosha, Dec. 27; Chicago, Dec. 28; Springfield, Dec. 29; St. Louis, Dec. 30; Peoria, Dec. 31; Rockford, Jan. 2; Janesville, Jan. 3; La Crosse, Jan. 4; and Madison, Jan. 6, 7, 13, and 14.

Three dress rehearsals of "Feature That!", Haresfoot's 1927 musical comedy, were held during the past week. The last polishing touches have been put on the show and when the first performance is given in Oshkosh on Tuesday, the audience will see a splendid show.

"Feature That!" by William Rahr '28, and Jack Mason '29, is a story of the movies. A rich father is persuaded to go into the movies, and with Renee Charme and Eric Von Stroheim to guide the embryos, a whole family enters them. The satire in the show is obvious.

Twenty-four chorus men, an eighteen-piece orchestra, the cast, and the production men for the show will comprise the 76 men that will make the Haresfoot tour. The names of all those making the trip will be announced in Tuesday morning's Daily Cardinal.

### Union To See Surprise Gift Come Monday

A Christmas gift for the new Memorial union will arrive Monday morning in the person of Leon R. Pescheret, interior decorator, bearing a surprise package full of sketches, samples, and estimates for the decoration and furnishing of all the rooms in the new building.

For two months, Mr. Pescheret has worked busily but quietly in Chicago, preparing a huge \$150,000 decorative scheme, creating furniture designs, drawing perspectives, and amassing samples and quotations.

Talking over long distance phone yesterday, Mr. Pescheret said, "I'm bringing up a healthy surprise." Other than this, he has reported nothing of his plans.

Vague rumors, however, have leaked out. There is talk of wallpaper for the guest rooms that is washable with soap and water; of a men's taproom that is reminiscent of the old German rathskeller, with a 35-foot bar (and rill), plain oak tables and benches, booths for cards, rough plastered walls, and a vari-colored slate floors.

## 'Arms and the Man' Sparkles in Wit, Gayety

BY W. J. F.

It is undoubtedly fitting that at the same time the Theatre Guild Repertory Company was presenting Shaw's "Arms and the Man," here, the Acting Company in New York was offering another Shawian play, "The Doctor's Dilemma." Shaw seems to have arrived at that point envied by all dramatists—when his plays are subject to a periodic revival.

"Arms and the Man," while not the most brilliant of Shaw's plays by any means, has enough of the Shawian wit and sparkle to make its performance worth while attending. The whole comedy is filled with ironic gay dialogue, flashing conversation, clever innuendoes, and gently satirical thrusts.

The story itself is thin; but its function is only skeletal in nature, it serves as a support on which Shaw hangs his sententious comments. These remarks, excellently worked into the fabric of the play, have an enormous range; they include duels, amours, gratitude, lies, England, purity, servants, ladies; and the main interest of the comedy—soldiers and war, both of which he holds up to biting ridicule.

Some of his remarks on war and campaigning were expressed in a more allegorical form in Capek's play, "The World We Live In," but there is no disguise here, Shaw needs no insects to play the roles of soldiers.

The two leads are played by George Gaul and Florence Eldridge. Gaul, in the part of the professional Swiss soldier who took war as a business, and not as a romantic escapade, gave a most excellent performance. Miss Eldridge had moments in which she was splendid, notably, the one scene where she simulates a highly indignant young woman who is ashamed of herself for having lied twice in her life. Her rendition of that scene and of the subsequent expose left little to be desired. Frederic March and Hortense Alden, especially the latter, were also good in their presentations of the young Maj. Saron, and of Louka, the servant girl.

### UNION GETS SPECIAL BRONZE HARDWARE

The contract for the hardware in the new Memorial Union building has been let to the low bidder, H. F. Haessler company of Milwaukee, it was announced at Union headquarters yesterday. Door plates, scutcheons, and knobs have been designed specially for the Union, and will appear on the important doors of the building. The new design has the simple, symmetrical lines of the northern Italian Renaissance, harmonizing in this respect with the architectural motif of the building.

## Orchestra Plays This Afternoon; 1800 May Hear

### Marie Ludwig, Chicago, Assists; To Present Three Harp Solos

Seating arrangements to accommodate an audience of over 1,800 have been made at the Men's gymnasium for the University orchestra's first concert of the year, to be presented under the direction of Prof. E. W. Morphy at 3 o'clock this afternoon.

Miss Marie Ludwig, harpist, who will appear as soloist with the orchestra, arrived this morning from Chicago, where she played a radio engagement last night. Besides presenting a group of three solos, Miss Ludwig will play the elaborate harp parts of the "Scheherazade Suite" and assist the orchestra in other compositions.

#### Recalls Arabian Nights

One of the high points of interest in this afternoon's program lies in the Rimsky-Korsakoff "Scheherazade Suite," a series of fantastic compositions designed, according to the composer, to evoke an emotion akin to that aroused by reading the stories of the Arabian Nights.

The suite is composed of four movements. The first, called "The Sea and Sinbad's Ship," is introduced by a solo violin, accompanied by the harp. This theme, which is to personify Scheherazade, appears at one (Continued on Page 2)

### Non-Fraternity Men Given Chance to Enjoy Junior Prom as Group

Non-fraternity men will again have the opportunity this year of attending prom as a group and enjoying the advantages that accrue. Three years ago the custom was inaugurated and 35 couples had a pre-prom dinner, a box for prom, and a post-prom dance. Last year the pre-prom play was added to the program.

"The idea behind the movement," George I. Wallace '29, chairman of the independent prom goer's committee, stated yesterday, "is to furnish prom and all the embellishments at cost. This is a service to the non-affiliated men on the campus by the prom committee."

Several non-fraternity men have already signified their intentions of joining the group, according to Wallace, but active organization is not expected to take place until after the Christmas vacation.

Milton C. Wittenberg '29 is assistant chairman. Others on the committee are Chester W. Foster '31, Waldo Favreau '30, Herman Kerst '30, and Truman Bloss '30.

## Laziness Causes Student Apathy Toward Activities Declares Prof. Troutman

### Death of Capable Leaders Is Appalling, Professor Declares

Student apathy toward university activities and stoicism toward its cherished traditions were severely criticized by Prof. W. C. Troutman of the speech department in an interview yesterday on the problem of student morals.

"Wisconsin students are afflicted with a pernicious anemia toward those things which are wholesome and active," he said. "The dearth of capable workers to carry on campus activities is appalling. I can name the outstanding men of the campus on the fingers of one hand.

"And it is not because others are not able to take part in carrying on the student work; it is because they are too lazy, and too deeply interested in things of a flagrant and salient nature."

The death of the student senate was one of the cases cited by Prof. Troutman as an atrocious example of the direction in which this apathy on the part of the students is tending. Lack of interest shown in elections for prom chairman, the dying down of the freshman green cap tradition, the scant interest shown in the elections to Iron Cross and to Phi Kappa

Phi—all these things he believes are the unnatural manifestations of this age of modernism.

By the rabid discussions on things of a sensational nature, Wisconsin students are making themselves known all over the country as shocking and extreme modernists.

"Instead of a common bond uniting students of the same university, there is a feeling of antagonism between men of different fraternities. The interfraternity rushing system is largely responsible for this attitude, but indirectly this too, hinges back on the same apathy because the students refuse to do anything to improve the situation."

The spirit shown by the students toward the Memorial Union is another sign of degeneracy, Prof. Troutman pointed out. The average student has no real interest in the approaching completion of the building other than a feeling of relief.

Prof. Troutman does not believe that the students lack the necessary drive or ability to vie with each other in sharing the work and honor of student activities; it is merely that this drive or ability has been misdirected and turned into channels through which no real good can come. Wisconsin is not alone in this situation; other universities are experiencing the same thing, but it is up to Wisconsin to find a remedy, he says.

### ORCHESTRA APPEARS IN FIRST CONCERT

(Continued from Page 1)

time or another in all four movements.

#### Portrays Romance

The second movement is decidedly oriental in the opening theme, and closes with a spirited military motif. The third movement is introduced by a striking passage involving the use of military drums and gongs, and is followed by a selection to portray the romance of "The Prince and Princess."

The fourth movement is a riot of orchestral color in the atmosphere of a Bagdad carnival. It ends quietly with the Scheherazade theme, to suggest that the whole poem has been a vivid dream.

With Miss Ludwig's aid, the University orchestra will be able to present the suite with the identical instrumentation for which it was scored.

#### Miss Ludwig Plays Solos

The third overture to the act, Beethoven's opera "Leonore," which Richard Wagner declared was no longer an overture but a drama in itself, will be presented as the opening number, to be followed by Miss Ludwig's solos. Miss Ludwig will play the Saint-Saens arrangement of Bach's "Bourree," a Romanza from Donizetti's "Lucia de Lammermoor," and Zabel's "At the Fountain."

The composer of the "Elegy," to follow the soloist, is Friml, who is ranked with Victor Herbert in possessing a remarkable gift of melody. His works avoid the startling dissonance of the moderns without being vulgarly sentimental. This "Elegy" is a typical example of his work.

The Sibelius "Finlandia," which closes the program, is charged with a tremendous nationalistic spirit, and an intense terror of war, to such an extent that its performance was pro-

hibited in Finland during recent trouble with Russia. Officials, it is claimed, declared the composition aroused the people to a pitch of almost uncontrollable excitement.

### Alumni Office Keeps Contact With Commerce Grads By Card Files

In order to keep closely in contact with commerce graduates, men and women who have studied a few com-

merce courses, and non-university business men and women interested in the progress and activities of the school of commerce, a total of about 3,000 information file cards have been compiled by the alumni records office.

Much information concerning graduates and former students in the school of commerce, as well as correct addresses, is available in the alumni records office and is being added to material already collected in the office of William A. Scott, director of the school of commerce.

"Commerce graduates keep closely

in touch with their instructors and professors," said John L. Bergstresser, alumni recorder. "Letters from them are frequent, and at commencement

time last spring, people from as far away as Knoxville, Tenn., and Buffalo, N. Y., called at the commerce offices."

# STRAND

CONTINUOUS 1 TO 11 P. M.

INDEFINITE SHOWING

SHOWS START 1-3-5-7-9 P. M.



An Epic of Flaming Love and Blazing Courage.

BY THE MASTER PRODUCER OF "HUMORESQUE"

THIS PICTURE WILL TAKE RANK WITH "THE BIG PARADE" and "WHAT PRICE GLORY" and the other outstanding pictures of the past three years.

"7th Heaven" is the eighth wonder of the movie world \* \* \* inspiring from start to finish \* \* \* If you don't see it you've seen nothing in the moving picture line.

— The N. Y. Evening Telegram

## American Ice Cream Co.

### Week-end Special

A Layer of Carmel Pecan  
and  
A Layer of Orange

A DELICIOUS SPECIAL

## U of W Students HOME for the HOLIDAYS

CHRISTMAS-NEW YEAR'S, 1927-28

### SPECIAL TRAIN SERVICE

Wednesday, Dec. 21st

<b>To CHICAGO</b>	Lv. Madison 1:05 p. m.	1:10 p. m.	5:00 p. m.
	Parlor cars only	Coaches	Coaches
		Parlor Car	Parlor Cars
			Dining Cars
			Buffet-Lounge Car
<b>To MILWAUKEE</b>	Lv. Madison 1:00 p. m.	1:05 p. m.	5:30 p. m.
	Coaches	Coaches	Parlor Cars
	Parlor Cars	Parlor Car	Dining Cars
			Coaches
<b>To GREEN BAY and FOX RIVER VALLEY</b>	Lv. Madison 1:30 p. m.	Coaches, Observation-Parlor Car	
<b>To ELROY, ST. PAUL-MINNEAPOLIS, LA CROSSE, WINONA and MANKATO</b>	Lv. Madison 1:30 p. m.	Coaches, Parlor Cars	
<b>To ST. PAUL-MINNEAPOLIS and DULUTH</b>	Lv. Madison 9:28 p. m.	Coaches, Sleeping Cars	

ADDITIONAL FAST TRAINS will be operated on Thursday, December 22—7:25 a. m. and 1:00 p. m. to Chicago, and 1:00 p. m. to Milwaukee

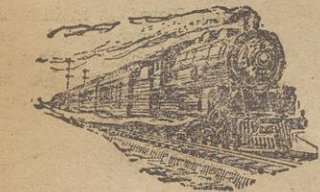
### REGULAR SERVICE

<b>To CHICAGO</b>	Lv. 4:35 a. m.	7:25 a. m.	10:40 a. m.	1:00 p. m.
	Ar. 8:35 a. m.	11:30 a. m.	4:35 p. m.	5:45 p. m.
	Lv. 1:15 p. m.	5:40 p. m.	5:40 p. m.	
	Ar. 5:15 p. m.	10:05 p. m.	10:10 p. m.	
	(a) Via Milwaukee	(b) Via National Ave.		
<b>To MILWAUKEE</b>	Lv. 8:00 a. m.	1:00 p. m.	5:40 p. m.	
	Ar. 10:25 a. m.	3:30 p. m.	8:10 p. m.	
<b>To GREEN BAY and FOX RIVER VALLEY</b>	Lv. 8:00 a. m.	1:00 p. m.	5:40 p. m.	
<b>To ELROY, LA CROSSE, WINONA and WEST</b>	Lv. 1:00 p. m.	1:15 a. m.		
<b>To ST. PAUL-MINNEAPOLIS, DULUTH and SUPERIOR</b>	Lv. 7:30 a. m.	1:00 p. m.	9:28 p. m.	

MAKE YOUR RESERVATIONS NOW  
For information and full particulars, apply  
A. F. KNIEBUSCH, Ticket Agent  
A. W. BOWER, Division Passenger Agent  
Telephone Badger 142-143

## CHICAGO & NORTH WESTERN RY.

1554



## Home for the Holidays

via The MILWAUKEE Road

### Complete Service Everywhere

In addition to its regular service the "Milwaukee" has arranged for Special Trains and through Standard Sleeping Cars, Parlor Cars, Dining Cars and Coaches.

Wednesday, Dec. 21st

#### LEAVE MADISON

for

Milwaukee	12:45 P. M.
Wauwatosa	12:45 P. M.
Chicago	12:55 P. M.
La Crosse	1:05 P. M.
Wisconsin Rapids	1:05 P. M.
Wausau	1:05 P. M.
Merrill	1:05 P. M.
Tomahawk	1:05 P. M.
Minocqua	1:05 P. M.
St. Paul	1:15 P. M.
Minneapolis	1:15 P. M.
Omaha	4:30 P. M.
Kansas City	4:30 P. M.
Sioux City	4:30 P. M.
Des Moines	4:30 P. M.
Davenport	4:30 P. M.
Sioux Falls	10:00 P. M.
Charles City	10:00 P. M.
Mason City	10:00 P. M.
Algona	10:00 P. M.
Emmetsburg	10:00 P. M.
Spencer	10:00 P. M.
Austin	10:00 P. M.
Faribault	10:00 P. M.
Owatonna	10:00 P. M.
Northfield	10:00 P. M.

For particulars regarding service to points not mentioned above, also reservations and tickets, call on



A. B. BATTY  
City Passenger Agent  
Phone Badger 6300  
Madison, Wis.

1929

# Pre Prom Dance

Crystal Ball Room

Saturday, January 7

## Billy Adair and His Band

Get Your Date Before Vacation

9 until 12

The last 12:30 weekend

\$2 per couple

Daily Reports of Badger Teams

CARDINAL SPORTS Athletics in the Collegiate World

All-Fraternity Football Team Is Picked By Daily Cardinal Dopesters



END Ed Kelly, Theta Xi

TACKLE Alois Bachhuber, A. K. K.

GUARD Harry Hansen, Theta Xi

CENTER Foster Schempf, Sig Chi

GUARD Howard McCaffrey, Psi U.

TACKLE Jack Kanalz, Theta Xi Glenn Arthur, S. A. E.

E. P. Kelly LE Theta Xi M. Bachhuber LT Alpha K. K. H. I. Hansen LG Theta Xi F. J. Schmpf C Sigma Chi McCaffrey RG Psi Upsilon Jack Kanalz RT Theta Xi G. Arthur RE Sig Alph Ep Crain QB Delta Tau Delta Powers LT Psi Upsilon Metcalf RH Sigma Chi Moldenhauer FB Theta Xi

By Dan Albrecht

Santa Claus coming down the chimney on Easter morning would scarcely feel more off schedule than this reporter as he presents, one month after the football season has closed, the honor roll of intramural football players. But there ain't no Santa Claus and this reporter has no feelings, so we'll just go ahead.

The truly discerning eye will discern without much trouble that the members of the 1927 all-university eleven were picked from six fraternities, four from Theta Xi, two from Psi Upsilon, and Sigma Chi, and one each from Delta Tau Delta, Alpha Kappa Kappa, and Sigma Alpha Epsilon.

A Capable Committee

The team itself was selected by a committee of five men who, between them, have witnessed every interfraternity football game this year and who, for that reason, are supposed to know something about it.

The predominance of Theta Xi's on the team is explained partly by the

fact that the heights eleven won the championship this year and partly by the fact that there wasn't anyone else better, both of which are regarded by this reporter as A-1 explanations.

Powers Is Captain

First on the list of honor men is Edward P. Powers '28, Fargo, N. D., who captains the all-university team. Eddie half-backed for Psi Upsilon during the season just ended—two weeks ago. He received no little support, of course, from a Psi U. line that was both heavy and fast, but many of his feats were performed in a perfectly open field. He was also a passer and punter of better than average caliber.

Brt Moldenhauer '30, Beloit, the big battering ram in the Theta Xi attack,

takes the fullback job without argument. Once again, he was helped by a strong line but it was not unusual for him to make a hole of his own when something went wrong with the men ahead of him.

Metcalf Good Halfback

A Sigma Chi, Ralph Metcalf '28, Webster Groves, Mo., played enough heavy football to make him halfback on any man's team. Ralph furnished most of the dynamite in Sigma Chi's attack, and you can believe or not, but Sigma Chi had plenty.

The remaining backfield member is Morris Crain '31, Thorntown, Ind., who was working every second to keep Delta Tau Delta in the race. His efforts weren't exactly successful, but his methods looked good, and it is

beyond question that he would have been an outstanding star if the Delta eleven had developed a bit more strength.

Place Arthur At End

At right end, the selecting committee saw fit to make over the field in order to include Glenn Arthur '29, Dodgeville, who captained the Sigma Alpha Epsilon team this season. Glenn started out in life as a quarterback, and if you remember the deceptive attack used by the SAE's, you will admit he's a good one.

A football team without an Irishman would be no football team at all, and without this particular Irishman, Edward P. Kelley '30, Chicago, Ill., it would be even less than that. Ed made one particular Theta Xi end the

unhealthiest place imaginable for halfbacks who couldn't produce their down under Moldenhauer's long punts.

Bachhuber Star

According to observers, the big stop and go man for Alpha Kappa Kappas' runner-up eleven was nobody but Alois M. Bachhuber '28, Mayville. Ollie lined-up as a tackle, but he played the whole field and he had very definitely to be put out of the way before anybody gained any ground. He was rated the outstanding tackle of the season by your committee.

During the Theta Xi-Alpha Kappa Kappa game, somebody was getting through and nailing AKK backs for no end of loss. That somebody was Jack P. Kanalz '30, Milwaukee, Theta Xi tackle. Jack may not have been a gentleman on the line, but he was every inch a go-getter. Which is enough.

Howard McCaffrey '31, Madison, acted as champion hole-opener and half-back impeder for the Psi U's all season. Mac is a big boy whose only bad habit is that he'll never stop and argue with you. He was probably the most aggressive and powerful guard on any fraternity team.

Harry Hansen '30, Cleveland, Ohio, played a somewhat different game at guard but he produced equally satisfactory results. It needs no repetition that the Theta Xi line won this year's championship for Theta Xi. Harry did more than his share of blocking and charging.

Phi Kappa Tau Is Winner of Fraternity Track Championship

Delta Upsilon Takes Second; Theta Chi 3rd

Victors Garner Six Firsts to Show Superiority Over All Rivals

By Aaron Gottlieb

Phi Kappa Tau, with a team score of 20 points, won the eleventh annual interfraternity track meet held during the past week on the indoor track, and in doing so showed complete superiority over the other teams entered.

The Phi Tau's, taking victories in the first two events held, secured a lead which they held throughout the entire meet, and were never threatened, though followed closely by the second place Delta Upsilon's.

In winning the meet, the victors took six firsts out of the 11 events held, coping in the 40-yard dash, the half-mile, the one-lap run, the low hurdles, the broad jump, and the mile.

Hummel, Thompson Star

While the Phi Tau's had only two truly individual stars, Richard Hummel and McClure Thompson, the remainder of their team was so evenly balanced as to give them high rankings in several events wherein they did not place high individually.

The second place Delta Upsilon's earned their position by winning firsts in the high hurdles and the high jump, and also securing a number of seconds. The third place Theta Chi team, after being hidden during the greater part of the meet, suddenly came into the spotlight yesterday by winning the shot put, and this with a previous tie for first in the low hurdles, advanced them into the select circle of winners.

The high jump, which was completed yesterday, resulted in a victory for the Delta Upsilon's. Individual honors in this event resulted in a tie for first place between Fyfe of Delta Upsilon and Beagle of Delta Tau

Delta, each having cleared the bar at 6 feet 2 inches.

Over the Bar

The D. U.'s won this event by having in addition to Fyfe's high mark another 1 inch less, made by Davidson, and two jumps of a fair height made by Burnham and Stone. These four men comprised the winning team for the D. U.'s in the high jump.

The rankings of the fraternities in this event are:

- 1. Delta Upsilon 6. Chi Phi 2. Delta Tau Delta 7. Theta Xi 3. Phi Kappa Tau 8. Sigma Chi 4. Theta Chi 9. Alpha Chi Rho 5. Kappa Sigma

Phi Kappa Tau emerged victorious in the mile. By placing Thompson as individual winner of the event in the time of 4:46.4 and Arne in the good time of 4:54.8, they secured a high enough average with the help of Johnson and Motley to win the event.

Close Mile Race

The fight for individual honors in this event turned out to be a battle between Thompson and Bell of Delta Upsilon. Both men happened to draw the same heat, and rapidly running away from the rest of the field, proceeded to fight it out between themselves. Thompson led all the way but was never more than five yards ahead of Bell, and finished but a second ahead of him.

The standings of the fraternities in this event are:

- 1. Phi Kappa Tau 6. Kappa Sigma 2. Delta Upsilon 7. Theta Xi 3. Alpha Chi Rho 8. Chi Phi 4. Sigma Chi 9. Delta Tau Delta 5. Theta Chi

Theta Chi won first place, in the shot put when a 40 1/2-foot heave by Sullivan, individual winner of the event, raised their average up to a winning margin. The four men to place for the Theta Chi's in this event were Sullivan, Lunde, Bayha, and De Haven.

The only outstanding mark in the shot put was the one set by Sullivan. The heave this youngster made is of varsity caliber, and sets a record for the event in fraternity track meets.

The rankings of the fraternities in this event are:

- 1. Theta Chi 5. Phi Kappa Tau 2. Theta Xi 6. Kappa Sigma

3. Delta Upsilon 7. Delta Tau Delta 4. Sigma Chi 8. Chi Phi

Fast Relay Time

The special relay, the closing event of the track meet, wherein the four men comprising a team were each required to run one lap, went to the Phi Kappa Tau's. Competition here, as far as numbers went, was small, only the D. U.'s and the Delta Tau Delta's furnishing competition, but the race was an exciting one.

To win, the Phi Tau team of Peacock, Hummel, Arne, and Benson, set a time of 1:05.8, which is 16.4 seconds per man, and brings the average up to the annex record.

The only event which has not been completed is the pole vault, which will be finished Monday, but indications are that the rankings in this will not affect the final standings of the fraternities in the meet which are as follows:

- 1. Phi Kappa Tau 20 2. Delta Upsilon 28 3. Theta Chi 41 4. Kappa Sigma 47 5. Theta Xi 52 6. Delta Tau Delta 54 7. Chi Phi 61 8. Alpha Chi Rho 70 9. Sigma Chi 77 10. Farm House 121 11. Theta Kappa Epsilon 130 12. Alpha Sigma Phi 130 13. Alpha Sigma Phi 134 13. Pi Pappa Alpha 135

LIBRARY TO LOAN BOOKS FOR STUDY DURING CHRISTMAS

By complying with the proper regulations, students may draw books from the University library for the Christmas vacation. L. C. Burke, assistant librarian, announced yesterday. The provisions for such withdrawal are:

If more than two copies of a reserved book are on hand, half of the number reserved may be drawn. Thus, if there are 10 books on reserve, five may be taken out for the Christmas recess. But if there are three books, only one may be drawn.

Improved Badger Cage Team Meets DePaw Tomorrow Night

Will Rely on Fast Passing Attack and Strong Defense for win

One Indiana college team suffered at the hands of the clawing Badgers and tomorrow night a second quintet from the Hoosier state, DePaw, will invade the Armory to attempt to make up for the lost prestige of that famous basketball state.

Wisconsin showed up much better than was expected last Friday night against Butler, and is expected to repeat against DePaw. DePaw will probably have a team as good or almost as good as Butler's, and if the Cardinal cagers suffered any strain in the game against Butler it might be that DePaw will do the thing that Butler could not.

A Starless Team

One thing about Wisconsin this year is the fact that there is not an

outstanding player on the whole team. Each and every man does his part as well as the other and it largely depends on the circumstances as to which man plays the best game.

The defense, so far, has proved superior to the offense. The two guards, George Hotchkiss and George Nelson, have been playing good basketball in all of the contests to date and it looks as if Big Ten opponents will have a tough time piling up any large scores on the Cardinal cagers.

Clever passing again is the feature of the play of the Meanwell coached five. The feint pivot and pass of Behr and Andrews is pretty to watch. The guards advance the ball to the center of the floor in a leisurely manner but once it is passed into the opponents' defense the Badger offense breaks fast.

"Lest You Forget"

Make your reservations NOW for our Mid-night suppers served during the intermission from 12:00-1:00 the night of the '28 Junior Prom. We will be glad to accommodate group parties and arrange for private dining rooms.

Hotel Loraine

"DINE IN DELIGHTFUL SURROUNDINGS"

# The Daily Cardinal

FOUNDED APRIL 4, 1892

University of Wisconsin official daily newspaper owned and controlled by the student body. Published every morning except Monday by the Daily Cardinal company at the Union building, 772 Langdon street, and at the University Y. M. C. A. building, 740 Langdon, Madison, Wis. Printed by the Daily Cardinal Publishing company. Member of the Western Conference association.

Entered as second class matter at the postoffice at Madison, Wis.

Subscription rates—\$3 a year by carrier; \$3.50 a year by mail; \$1.75 a semester by carrier; \$2 a semester by mail. Single copies 5 cents.

Editorial office—Union Building, phone B. 250 before 5:30 p. m.; Y. M. C. A., phone . . . . after 5:30 p. m.  
Business office—Union building, phone B. 6606 before 5:30 p. m.

### BOARD OF CONTROL

PRESIDENT, JAMES SIFFLE; vice-president, Thomas Kirmse; treasurer, Harry Thoma; secretary, Margaret Alsop; Catherine Kuehn; ex officio members, Edwin H. Ferree and Marvin A. Lehmkuhl; faculty advisory board, Don R. Fellows, J. C. Gibson, and Grant M. Hyde, chairman.

### EDITORIAL STAFF

EXECUTIVE EDITOR . . . . . MARVIN A. LEHMKUHL

Managing Editor . . . . . ALEXANDER GOTTLIEB  
Editor-in-Chief . . . . . WESLEY F. PETERSON

Senior Editor . . . . . Hamilton Beatty  
Woman's Editor . . . . . Idabel Sine  
Sports Editor . . . . . Dan Albrecht  
Women's Sports Editor . . . . . Pearl Malsin  
Society Editor . . . . . Elinor Prideaux  
Desk Editors—Eugene S. Duffield, Genaro Florez, C. Hjalmar Nelson, Warren C. Price, Hampton Randolph.  
Junior Editors—Marie Heuer, Renee Newman, Judith Ninman  
Skyrockets Editor . . . . . Don Trenary  
Literary Editor . . . . . Bayrd Still  
Assistant Desk Editors—Wilbur Davis, Robert Godley, Edith Haentzschel, David Morrison, Franklin Prinz, Ben Salinsky, Thomas Stavrum, Allen Tenny, William Fuller  
Assistant Sports Editor . . . . . Harold Dubinsky, Aaron Gottlieb  
Assistant Society Editor . . . . . Marjorie Droppers  
Exchange Editor . . . . . Margaret Reuter  
Alumni Editor . . . . . Ethelwyn Barton  
Intramural Sports Editor . . . . . Ty Dahlgren  
Engineering Reporter . . . . . Marvin Hersh  
Librarian . . . . . Elizabeth Lyman  
Special Writers—Alice Bickel, Kirk Bates, Marjorie Hamer, George Harb, Margaret La Budde, Irving Tarrant, Bernice Tweed, Francis Utley, Helena Weil.  
Reporters . . . . . Margaret Ludden, Elizabeth Maier, Jean Polk

### BUSINESS STAFF

BUSINESS MANAGER . . . . . EDWIN H. FERREE  
Associate Business Manager . . . . . Clayton O. Braatz  
Local Advertising Manager . . . . . Marvin M. Fein  
Foreign Advertising Manager . . . . . Glen H. Arthur  
Circulation Manager . . . . . Walter Eekers  
Collection Manager . . . . . Robert Kafton  
Circulation Assistant . . . . . Byron Caldwell  
Promotion Manager . . . . . Pearl Malsin  
Service Manager . . . . . Melvin Swanson  
Office Secretary . . . . . Myrtle Campbell  
Associate Advertising Managers—Dorothea Zarbell, Orval Bast, Edward Schmidt  
Assistant Advertising Manager . . . . . Melvin Swanson  
Advertising Assistants—Gerald Rice, Herbert Lenicheck, Janet Miller, Lydia Eskridge, Henry Holm, Elizabeth Babcock, Jean Sontag, Eileen Walper, Tirzah Caldwell, William Payne, Edith Allen, James McMullen, Margaret Sheppard, Marc McKinley, Joseph Schaaff, Martin Spero.  
Assistant Circulation Managers—Elizabeth Ashcraft, Erma Klempell, Newell Munson  
Associate Service Manager . . . . . William Payne  
Collection Assistants . . . . . Betty Olbrich, Alice Purcell  
Promotion Assistants—Sigurd Trnmal, Anita Cohen, Maurice Pasch.  
Office Assistants—Margaret Nutting, Dorothea Zarbell, Henry Kaufman.

DESK EDITOR—WARREN C. PRICE

## "ON WISCONSIN"

- 1. Adoption of a system for Fraternity Rushing.
- 2. Betterment of student Self-Government.
- 3. Success to the Experimental College.
- 4. Athletics for all.

### Tonight: Good Cheer

ONE-ACT PLAY appropriate to the season, carols sung by trained singers, and other fitting observances will mark the Christmas festival to be held in the men's gym this evening. Here is something new in university life at Wisconsin—the opportunity for all students and faculty members to join in a celebration of Christmas. It is an opportunity worth taking advantage of, especially since we are all-too-prone to neglect the spiritual side of our lives while attending college.

Christmas, the celebration of the birth of one of the most outstanding figures in world history, is, in a sense, a strictly sectarian sort of a thing. But its spirit of good will is universal. Regardless of race or creed, therefore, one can gain fellowship and mutual good cheer in the observance of Christmas-tide.

As December 25 nears, the whole atmosphere of human relations seems to become charged with a spirit of greater tolerance and well wishing unknown at any other time throughout the year. And not a little of this feeling is brought about by no more sublime a medium than decoration and outward display. Brilliantly ornamented trees, flashing beautiful lights, greet the eye on every hand. Shop windows take on a new air of delight. Shop interiors lure the passerby to come in and buy. Yes, buy but not for himself, for a friend, mother, father, sweetheart. And so millions every year learn the real truth of the old saying, "It is more blessed to give than to receive."

Tonight the opportunity will be provided for the whole university to come together for the purpose of enjoying the tonic stimulation of applied "good will toward men." And trained singers will carry the spirit of the festival from the gym out through the Latin quarter and out on the heights.

Christmas carols will be sung in the streets of Madison tonight.

### "Je Ne Sais Quoi"

MONDAY, TUESDAY, a half day Wednesday, then—homeward bound! Nearly 9,000 students are counting the hours till noon of December 21. And it is safe to say that the faculty is also looking forward to relief from the academic grind.

Lo, but there are strange plans and queer ambitions afoot for the passage of the time between next Wednesday and Jan. 5. There is talk of topics and themes. It has been prophesied that the concentrated manipulation of student typewriters in the university section will be

scattered broadcast during the holidays, but the clicking will continue. However, prophets have no honor in their own countries, especially when the citizens have seen their predictions fail in the past.

It has ever been rumored that students who are absorbing law under the fascinating guidance of "Steve" Gilman intend to review cases and decisions during the Christmas recess. It can be stated with assurance, however, that the law books will accumulate just as much dust, figuratively speaking, of course, as the topics and these.

With even more assurance, it can be predicted that about 9,000 young people will eat plenty and sleep more. "Phil" Fox, over a Sterling hall, estimates that 1,620,000 hours of sleep will be slept by Wisconsin students from Dec. 22 to Jan. 5. His statistics classes are preparing tables and curves to present these data graphically. Mr. Fox, when interviewed, stated that the distribution was far from normal.

It is rumored that Dr. Meiklejohn will spend the recess in research for the Experimental college. It seems that the students have grown tired of bridge, and Dr. Meiklejohn is faced with the necessity of finding new games for them to play; for, as the college mascot, an adorable guinea pig, remarked, "We simply must pass the time." Spelling bees may be made a regular part of the curriculum. A certain Prof. Armour, more affectionately known as Robert or "Bob" would no doubt welcome the addition of spelling bees to the curriculum of the university as a whole. Such is the curse of business letters.

One of the sadder aspects of the approaching vacation will be the desertion of the well known pharmacy. The pharm hands, or "coke" kings, are learning solitaire in order to while away the hours until the drugstore cowboys return from Main street.

We might say parenthetically here that this informal gossip style is affected in order to stimulate a return to more personal journalism. In this day and age of machines and standardization a certain "je ne sais quoi" has been divorced from the editorial pages of our contemporaries. Some of this "je ne sais quoi" is revived in this column today.

In all seriousness, however, we wish to remind the college youths who are about to return home, to save a little time for the family. Even if a course in French or history has killed the sentiment within your breast, do not forget that the folks back home will be glad to see you, if you'll give them a chance.

Since it is difficult to believe that the widespread intention to study during the Christmas vacation will have any effect, the following bit of advice is hereby offered to those who have borne with us this far:

"Gather ye rosebuds while ye may," for soon come the finals, the end for all and the finish for many.

### A STUDENT THINKS!

Seven-thirty, and up for breakfast; 8:30, up the Hill and to a class. A rapid succession of class periods, with short dashes between; an occasional period of comparative freedom in the library, to allow time to collect one's wits.

Down the Hill for lunch; bolt in a hurry, though, for a 1:30 class follows; afternoon classes finished, and a rush to the library again, merely to get a book, read it hurriedly, and outline a few vague notes before going to dinner.

Arguments pro and con over the dinner tables, the rush of rising and pushing back chairs, followed immediately by the crash of a piano and methodical clanking of a banjo.

The student returns to his room with glassy stare and mechanical motions. Indecision occurs. Should he go to the library or stay at his room? He decides on the latter course—everyone else in the class would want that particular book to fill that particular assignment, anyway.

Resignedly he sits down to the task of covering voluminous batches of text matter. But mental fatigue sets in—words blur before his eyes, and paragraph after paragraph fails to register.

Eyes grow heavy. Head nods. A short, but ineffectual attempt to overcome drowsiness follows; but he capitulates and drags himself to bed.

Just before he falls asleep comes a short clear moment. All that remains to be done—that must be done—flits before his mind's eye. And he thinks he will do it all tomorrow.

But the important thing is that he THINKS—he finally thinks.

Percy Percival Peters, poet:  
We don't know how all you folks feel,  
But this we will maintain,  
Bull fighting is as popular  
In Wall Street as in Spain.

## When You Were a Freshman

December 18  
THREE YEARS AGO

THE first announcement of committee chairmen for the university exposition was made last night by Eugene Tuhtar '25, general chairman.

Forensic board has filed complaint with the Student court preparatory to bringing a suit against Union board for violation of the former's right to bring speakers and all forensic talent to the university.

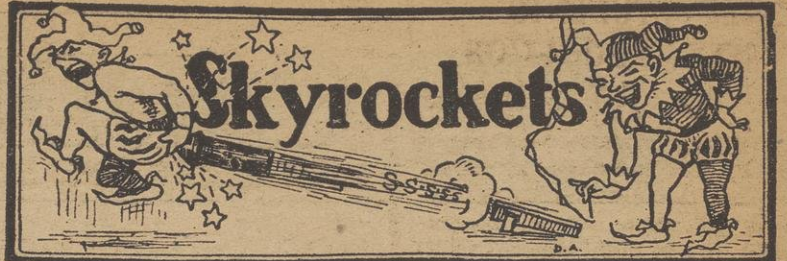
TWO YEARS AGO

Martha H. Walker '27, will be the queen of the 1927 Prom! The announcement of the selection was made late last night by Chairman Jeff Burrus, and with the announcement comes the answer to the question which has kept the campus wondering for so long.

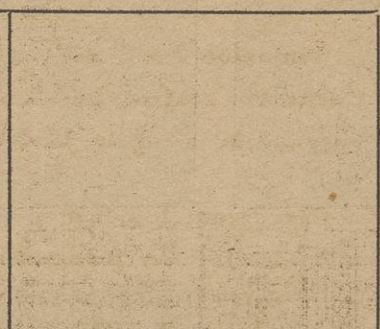
By action of the faculty members it was announced yesterday that over 100 students were finally absolved from suspicion and many were absolved from penalties in a case involving the theft of examination papers from the Romance language department here last June during the final days of the school year.

ONE YEAR AGO

There was no issue of the Daily Cardinal Saturday, Dec. 18, 1927, because Christmas vacation had begun.



Thinking of next Wednesday noon, we are inclined to agree with Santa Claus, who stroked his beard and said as he walked into the barber shop, "It won't be long now."  
MMM  
THE NIGHT BEFORE CHRISTMAS



Here we have a picture of an albino flea in Santa's beard as the old gent starts on his annual journey through a blinding snow storm.  
EEE

If the night before comes, can the morning after be far behind? Between them there's a direct relation but no comparison.  
RRR

HOPE IT DOESN'T RAIN, DEAR  
"I hope we have snow for Christmas."  
"I'd rather have turkey."  
RRR

Some girls are dressed fit to be hung on the Christmas tree and others are dressed fit to be hung.  
YYY

That picture on the front page of the Deet yesterday proves that even a man like King Bill has a failing now and then.  
CCC

Anyway we'll Betty has a good time at his party.  
HHH

Since Friday night Miss Betty's PROMINENCE on the campus has increased considerably.  
RRR

Prince of Orange says the Co-op ad yesterday should have read, "The Co-op's Pre-Christmas Sale Has Grown in Momenstum All Week."  
III

The Prince also remarks that if Prexy ever calls a conference about the R. O. T. C. he should call it a Tribunal.

SSS  
Jimmy '30, who is confined to the infirmary, wonders if he is going to be released in time to go home. His pulse registers 104. Every time the beeyutiful nurse holds his hand to take his pulse beat it jumps about 60 counts. He says he hopes people remember the poor invalid children in hospitals on Dec. 25.  
TTT

Ye Dumbe Coede who is doing Christmas shopping says, "I bought the darlinest little green fountain pen for sister, and when I got it home, it wrote black."  
MMM

Noses are red,  
Lips are blue,  
Winter is cold,  
And so are you.  
—Stuart.

AAA  
Think of a perfectly good football captain going to waste next fall—no pledges to be impressed.  
SSS

With this short offering we leave you even though you do wish we had shortened the "MERRY CHRISTMAS" to "Xmas," and we add a Happy New Year because we know that absolutely "There will be no drinking at prom."  
LITTLE BOY BLUE.

## Marion E. Tubbs, Weds Philip C. Lawson '22

Announcement has been received of the marriage of Miss Marion Tubbs, Elkhorn, to Philip C. Lawson '22, New York City. The ceremony was performed Tuesday afternoon, Dec. 6, at the home of the bride's parents.

The bride is a graduate of Carroll college, where she was affiliated with Kappa Gamma Phi sorority. Mr. Lawson is connected with the National Cash Register company in New York City, where they will make their home.

Wait-Spriggs  
The marriage of Margaret Jeanne Wait '26, Augusta, to Mr. Vaughn William Spriggs has been announced. Mrs. Spriggs is a graduate of Blackburn college as well as of the university. Mr. Spriggs is attending Northwestern college of dentistry at present. They will live in Chicago.

Capital City Rent-A-Car  
334 FAIRCHILD 334  
Chevrolets—Whippets—Fords  
All Closed Cars Equipped with Heaters  
A Campus Institution of Friendly Service  
434 W. Gilman St. . . . . 531 State St.

Meet Your Friends  
Every Night  
Except Sundays at  
The Drake Supper Dance  
Dancing week nights in the  
Newly Decorated Room  
(Informal)  
to the enchanting strains of  
BOBBY MEEKER  
and his  
DRAKE ORCHESTRA  
(A Benson Orchestra)  
Saturday's Formal  
Main Dining Room  
Friday  
Collegiate Night  
Direction, Gladys Andes  
Superior 2200

## 23,726 STUDENTS SEEK EDUCATION IN CITY SCHOOLS

There are 23,726 students seeking an education in Madison at present, according to the Association of Commerce; this figure included the University of Wisconsin with an enrollment of 8,942, according to the association.

Enrollments are reported as follows: Public schools, 8,901; parochial schools, 1,886; Sacred Heart High school, 190; Wisconsin High school, 390; total, 11,367; University of Wisconsin, 8,942; Madison Vocational school, 3,077; Madison college, 250; Sacred Heart academy, 90. Total, 23,726.

There were 5,165 students enrolled in the University of Wisconsin summer school.

## HIGH TREASURER SALARY IS \$6,000

The highest salary paid to one of Wisconsin's 71 county treasurers goes to the Milwaukee county treasurer, who receives \$6,000 per year, according to a report of county officials' salaries just issued by the municipal information bureau of the University of Wisconsin Extension division.

Douglas county ranks next to Milwaukee county as far as pay of county treasurer is concerned, with a stipend of \$3,300 for that official. The most common salary is \$1,800, paid in 11 counties, and the lowest is the \$600 annual wage of Jefferson and Kewaunee county treasurers.

In Pierce county the treasurer is also clerk of the highway commission, and in Manitowoc and Price counties the treasurers must pay the salaries of their deputies from their annual allowances.

### In The Churches

**First Church of Christ, Scientist—**Woman's building, 240 W. Gilman street. Sunday services, 9:30, Sunday school; 11, morning service, sermon, "Is the Universe, Including Man, Evolved by Atomic Force?" Wednesday, 8 p. m., evening meeting.

**Second Church of Christ, Scientist—**263 Langdon street near Francis. Sunday services, 9:30, Sunday school; 11, morning service and sermon. Wednesday, 8 p. m., evening meeting. Reading room, 201 First Central building, open daily except Sunday and holidays from 10 a. m. to 5 p. m.

**First Christian Church—**Meeting at Y. W. C. A. chapel, 122 State street. J. Warren Leonard, minister. Sunday services, 10, Sunday school; 10:45, morning service, sermon subject, "The Angel's Message"; 7:30 p. m., evening service, sermon subject, "The Night Visitor."

**Christ Presbyterian Church—**Wisconsin avenue and W. Dayton street. Pastors, George H. Hunt and Paul S. Johnson. Sunday services, 9:30, church school; 10:45, morning worship, rendering of Handel's "Messiah" by the church choir, soloists and chorus of 25 voices; 5:30, young peoples' groups.

**First Evangelical Church—**Corner E. Johnson and Wisconsin avenues. Lyndon Clyde Viel, minister. Sunday services, 9:30, church school; 10:45, morning worship, sermon, "The Reputation of the Church," music by the chorus and male quartette; 7:45 p. m., annual Christmas cantata, "The King of Christmas," chorus with orchestra accompaniments.

**First Unitarian Church—**Corner Wisconsin avenue and Dayton street. Minister, Rev. James H. Hart. Sunday services, 9:30, church school in the parish house; 10:30, regular service with special Christmas music, sermon by Dr. Shirley Jackson Case of the University of Chicago, subject, "A Resume of the Man of Nazareth—Jesus"; 6:30,

cost supper served in the parish house by the members of Unity club; 7:30, meeting of the Unity club, discussion of topic, "The Man of Nazareth—Jesus," led by Dr. Shirley Jackson Case. No services will be held Sunday, Dec. 25.

## PROF. MORTON TO TALK ON "THE ALLIED DEBT"

"The Allied Debt" will be the subject of the talk which Prof. W. A. Morton, department of economics, will give at the Tuesday noon meeting of the Lions club at the Park hotel.

## A NEW SERVICE

We have added a new up-to-date multigraph to our typing, mimeographing, and stenographic service.

Remember, we are open every day throughout Christmas vacation, the same hours as any time of the year—7:30 a. m. to 10:30 p. m.

Leave your topics or mail them in during vacation and we will have them all ready for you when classes start again.

All work is guaranteed.

## College Typing Company

519 North Lake Street

Badger 3747

# Charm

enhances the usefulness of many articles which we know will aid you in settling that all important gift problem. Come up and give our beautiful selections the double O. We are open every evening till Christmas.

'Gifts Reflect Thought'

The Mouse-around Shop  
Upstairs at 416 State St.

THIS IS HARESFOOT'S 30th YEAR

## Box Office Sales Begin Tomorrow at 12:30

For the show that represents all that is the best in college musical comedy productions. Snappy symphonic melodies, croonin' blues, and beautiful ballads played as only an eighteen piece college symphony jazz orchestra can reproduce them.

# "Feature That!"

A frolicking, rollicking satire on Hollywood, with its movie queens, its hysterical directors, the clicking cameras, the brilliant Klieg lights and all accessories to be shown at the

## Parkway Theatre

January 6, 7, 13 and 14  
Matinees January 7 and 14

See the "Wojii," exotic dance combining a Zulu dance motif with the modern Black-Bottom and the Stomp. Thrill to the graceful interpretation of the Geisha girl's oriental dance, and the unique presentation of "Japan Knees."

Eve.—Main floor, \$2.50; Loges, \$2.50; Balcony, \$2.00, \$1.00

Mat.—Main floor, \$2.00; Loges, \$2.00; Balcony, \$1.50, \$1.00

"ALL OUR GIRLS ARE MEN, YET EVERYONE'S A LADY"

## EASY WORK GOOD PAY

I have a worth while article that can be sold in houses, filling stations, and to auto owners. You can make good money during your spare hours. If interested, ask for Mr. Tobey at Park Hotel 3 to 5 P. M. Monday or Tuesday. Will hold this open for college men until after Tuesday.

**Students and Faculty**

**Meet in Festival Tonight**

(Continued from Page 1)  
 mas cheer, limited to 1,800 students by the capacity of the gymnasium.

**Foreign Carols on Program**  
 The program for the festival has been developed by Blanche Paris '28, Dean F. Louise Nardin, Prof. E. B. Gordon, and Prof. W. C. Troutman. Under the direction of Prof. Gordon, the students at the festival will sing a group of carols as the first number on the program. The Wisconsin Women's Glee club will sing two chorals from Bach's "Christmas Oratorio."

Prof. F. W. Roe will give a dramatic rendition of "Springvale for Christmas," written by Zona Gale, a regent of the university. Four languages will be represented by foreign carols in the international number which will include more than 150 people. Prof. C. F. Gillen, French department, will lead 60 students on the stage for the French carol, copies of which will be available for the audience. The Scandinavian group will follow, and then the students of Spanish. The German club's singing organization, supplemented by special voices, will furnish the concluding number.

**Present "Travelling Man"**  
 "The Travelling Man," a one-act play in keeping with the spirit of the festival, will be presented by the Wisconsin Players. Written by Lady Gregory, a distinguished Irish dramatist of the early twentieth century, the play will be presented by two of the best of student actors aided by a Madison high school girl. Herman Wirka '28, Helen Ann Hughes '28, and Jean Stafford form the cast of the play, which has been directed by Prof. W. C. Troutman.

Rolling carols of "Merrie Englands" form the number of the Wisconsin Men's Glee club. Directed by Prof. Earle E. Swinney, the club will sing "God Rest You Merry Gentlemen" and "Boar's Head Carol." Prof. Gordon will lead the audience in additional songs to conclude the program.

Special decorations for the festival will be arranged after the concert by the University orchestra in the afternoon under the direction of Hamilton Beatty '28 and Dorothy Galbraith '28. Soft lights of candles and masses of evergreens against gray curtains will form the stage setting.

**Bulletin Board**

This column is for the use of all organizations and university staff members who wish to reach large groups readily. No charge is made for notices. Notices may be brought to the editorial office at 722 Langdon street, or phoned to Badger 250, before 5 o'clock of the day preceding publication.

**HILLEL FOUNDATION**

Rabbi Lee J. Levinger, director of the Ohio State Hillel foundation, will speak on "Anti-Semitism and the Schwartzbard Trial" at 11 o'clock this morning at Hillel foundation. Two one-act plays, "A Questio nif Sex" and "The Tents of the Arabs," will be given at 3:30 o'clock this afternoon.

**SENIOR ENGINEERS**

All senior engineers who have ordered a Wisconsin engineering recognition pin can get them Monday in the lobby of the Engineering building. Polygon is supervising the distribution of the pins.

**CONGREGATIONAL**

The dramatic club of the Congregational Student association will give a play at the Congregational church Sunday at 5:15. The play is entitled "The Dust of the Road." Admission

Learn

**Tenor Banjo**

from an

Experienced Orchestra Banjoist

**Franklin Clarke**

Wheeler Conservatory of Music

626 University Ave. B. 843

**TYPING**

5c per hundred words. Experienced operators. All work guaranteed. It's always on time.

**Brewington Typewriter Co.**

533 State B. 222

will be free. All gifts for the missionary barrel of the association are due now and should be brought to the parish house.

**GRADUATE CLUB**

Miss Davis of the speech department will give some Christmas readings at the regular Monday evening supper of the Graduate club. The

meeting will be held at Wittwer's cafe on Dec. 19 at 5:45 p. m. Graduates are urged to be present and should make reservations by signing at the Graduate bulletin board in Bascom hall or by calling R. G. Shands at B. 3472 before Sunday noon.

Watch Cardinal ads for Christmas gift suggestions.

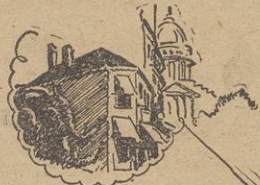
We Call And Deliver Phone B. 4929

The Diamond "L"

**SHOE SHOP**

Shoes Repaired--Made to Order

C. H. Lovendahl 411 W. Gilman St.



The Unique Shop  
 130 State Street

**Only Three Days**

---more to finish buying your gifts at this shop before you leave for HOME!

*Try these on that list--*

- Dad --- Scheaffer Desk Pen.
- Mother --- Handblocked Scarfs.
- HIM (or) --- Leather Smoking Set.
- HER --- Italian Leather Diary.
- Sis --- Smart Costume Jewelry.
- 'Roomy' --- Gay Cigarette Holder.

**MADISON Now Playing**

Special Return Engagement by Popular Request

The world's greatest actor in the greatest role of love's history. As the devil-care, song singer, the irresistible, witty, frolicsome idol of the underworld—Sweetheart of all its women—Leader of all its beggar gang. You have never seen John Barrymore—until you have seen him in this tremendous spectacle.



**John Barrymore**  
 The Beloved Rogue

**Collegiate!**

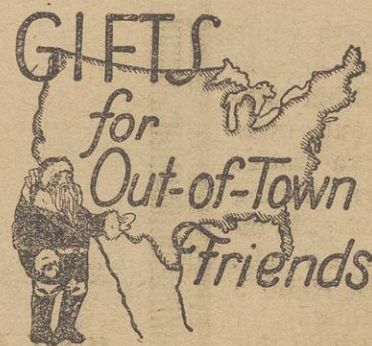
DON'T Wait Until You're on the Train to Think About--



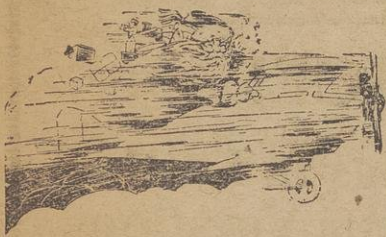
how cute Sis would have looked in that adorable negligee at Kruse's, that exquisite rose-blush, lace-trimmed negligee, or how Jan would have loved those cunning ribbon garters you saw at Kruse's but didn't have the price of at the time, those pretty little elastic ribbon circles, that were only 50 or 75 cents, or any of those innumerable precious trifles of lingerie at Kruse's you might have taken home



because if you do think about these things on the train you'll greatly regret the fact that you neglected to visit Kruse's before you left to get or send



# THE HOUR GLASS



"And who feels discord now or sorrow?  
Love is the universe today."

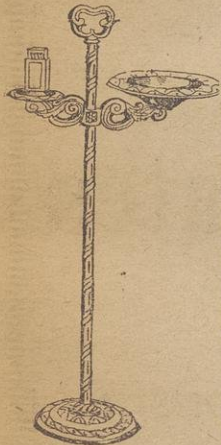
Christmas is in the air, tra-la, and who can find it in his heart to worry about anything, from late topics to what-you-will? There's nothing like it to make the spirit glow and quicken, even they tell us there is no Santa Claus. There is a Christmas spirit, and we'll defy the world on that. Christmas living is Christmas giving, and we will live this Christmas. So we trudge merrily through the softly falling snow, and jostle each other in the stores that radiate good will. Christmas shopping is being done, and its very lateness gives it tang. There are still six days left, and Madison stores are scintillating with suggestions.

**Listen—**

Worries about what to give for Christmas will simply vanish, evaporate, if you shop at the CO-OP! Such a motley array of giftable gifts, for anybody in the family (or out). For the sister or girl friend who likes a room smartly appointed, the gift shop suggests a vase and candle stick set of Spanish bubble glass, which connotes moon crystals and mellow waters. They are made in jade, amethyst, and amber, and cost \$2.80 a set.

For the wee young member of the family you will like the diminutive desk sets, with blotter, calendar, and tray, exactly like Big Sister's or Brother's. They come in green, red, gold, and blue, dashing enough for the most swashbuckling minor!

And for the girl who suggests l'esperit de femme through and through, what more alluring gift could I offer than a nest of snowy powder puffs all wrapped 'round in fluffy organdie and tied with a jaunty nosegay or organdie flowers, which the gift shop is selling.



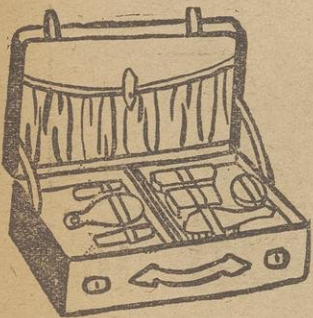
Smoking sets are favorite gifts this year, for both the b. f. and his free-thinking sister. The Co-op has some delightfully giftable ones of brass enamelled in red and green, with graceful cigarette and match holders, ranging from \$1.25 to \$2.60.

You'll find much to attract you in the Men's Section (I mean gift suggestions)

but have you thought of a tuxedo set as the splendid solution? There are some stunning ones here in smoked mother of pearl, single stud and three stud, set with drop pearls, in a variety of shapes and patterns.

**Feature That—**

A tie is an ordinary gift, unless you get it at Hooke & Dunn of GELVIN'S of Madison, 644 State street. A counter littered with exquisite ones in the newest flashing patterns, in designs imported and designs made exclusively for Gelvin's. Or for a more elaborate gift, surprise him with a set of sophisticated pyjamas, in English gabardine or silk, or a swashbuckling pair of half-hose in Scotch argyle pattern—he'll marvel at your keen intuition of what's good.



**Leather Gifts—**

If you've a passion for leather, or know some one who has, WEHR-

MAN'S is the mecca of your searching. Anything in leather, from coin purses of Florentine leather and petti-point designs to sophisticated traveling cases in the smartest leathers, jaunty enough to make the week-end trips to the roommate's home a real treat. Then there are unique arm ash trays for father, brass containers set upon leather weights for hanging on the arm of a chair or over the leg in right good ease; bill folds ranging from 50 cents to \$15; cigarette lighters fashioned after the English Dunhill (as well as less expensive patterns); clever shoe polishers for the busy friend who must be neat, and folding necktie holders of leather in smart design for one who travels (or would like to). A picture frame of soft leather, of either folding or easel type, will make the photograph you give ever so much more exciting. Qu'en pensez-vous?

**And Now to Kessenich's—**

Just to gaze down one aisle in this shopping heaven, you will see enough to settle the whole list many times over (I mean almost). To begin with, have you considered a cunning Bag-Dab of concentrated perfume scents? The odors, creations of Edouardo, are unmistakably good; they come in gaily colored containers of quaint design, such as jardiniers, jarrons, egglets, bowls, and pots, and are priced at \$1.25. A lovely musical powder box would make a gift at once personal and practical for mother's dressing table. Made in Switzerland—insurance of fine workmanship—the little enamelled boxes play a tinkly tune as soon as the lid is removed. They come in colors that will match or blend with any boudoir set, and range in cost from \$6.50 to \$7.50.

And scarfs—the new arrivals at Kessenich's will fairly take your breath away. Imported from Lake Como are these delicate lovelinesses, which will make exquisite wraps for evening wear. Some are of half-moon shape to fit over the shoulders without the extra folds and twists of a less adaptable shape, some have a silken cord about the top to draw them around the neck in cloak-like fashion. They are made of pure natural silk of double weight, embroidered in Italian design, with a hand-knotted fringe extending the length of the dress in gorgeous shades of cerise, copen, orchid, green, and flesh. An inspired gift for the best girl friend, n'est ce pas?



Hosiery is worn whether it's Christmas or not, but the Yuletide is an excuse for splurging on the very nicest, daintiest, newest patterns which seem too extravagant at other seasons of the year. MANCHESTER'S line of Gordon V-line hose are exquisite remembrances

for the girl who loves exquisite essentials (and that includes them all). The double point V-line in very sheer or service chiffon, or the French heel, inches narrower than the standard pattern, are notes of added daintiness that the girl friend will appreciate.

To add a delicate finish to the hosiery gift, nothing would be more appropriate than a distinctive pair of garters. Manchester's have them in the favored inch and inch and a half widths in two-tone satin of peach and blue, pink and black, and green and orchid. Tiny touches of pale meribow or sparkling rhinestone bucklets, cobwebby lace borders and ribbon rosebuds make them cunning works of art.

**Toothsome Thoughts—**

Now for the kiddies—THE CHOCOLATE SHOP is teeming with the very cleverest in imported chocolate novelties. Toys and dogs, fat Santas, so jolly that one hates to devour them, until their chocolate lusciousness is tasted, witches wicked enough to be eaten without any misgivings, bulldogs, kitties, snow men, wine sets, and tennis sets, trains and bells, and even Christmas stockings. Now the kiddies will enjoy them! Can't you see tiny Jimmy with a chocolate cigar just like daddy's in his mouth? Or little Jane playing "store" with the sets of bottled candies by Pascall?

And for grown-ups who still love good candy and always will, are imported chocolate orange leaves, or German imported chocolates individually wrapped in gay tinfoil and boxed in attractive colored glass containers, which will stamp you as the connoisseur supreme in sweets.

Now for the gift that must be fla-

vored with long thoughts and old associations for the friend who loves antiques—and to add a pleasanter



note to your own expedition, stop in at SHARRATT'S on 605 University avenue, and browse. You'll be sure to come away with something, whether it's an old vase, silver candle sticks of precise English design, or the freer Russian and Jewish patterns, a Japanese teapot, a Flemish match holder of lurid design, or even a beer stein decorated with a sentimental German motto. You may have these pieces refinished to give a touch of modernity, or you may purchase them with all the flavor of their age still clinging to them. And, beside their delightful adequacy, you'll congratulate yourself on the balance in your purse, to buy more presents for more people. 'n everything. Myself, I bought the quaintest, most delightful gifts in my "repertoire" here.

Farewell for now—avaunt, my fairs, and shop with joy. Your Christmas will be merry, and you will get everything you want. Santa told me so, so Merry Xmas every one!

See you tonight at the festival and, feature that.

ROSEMARIE.

## U. W. Faculty Members To Spend Holidays at Various Points in East

Several members of the university faculty are spending the Christmas holidays out of the city. President and Mrs. Glenn Frank have left for New York, where they will spend the Christmas vacation. Glenn, Jr., accompanied them.

Prof. and Mrs. F. A. Ogg will spend the holiday period in the East where Prof. Ogg will attend the meeting of the American Political Science association in Washington, D. C., Dec. 28 to 30. At this meeting, Prof. Ogg will make his annual report as managing editor of the American Political Science Review. He will entertain the members of the board and other guests at the Cosmos club on the evening of Dec. 29.

Dean Harry Glicksman will leave at the beginning of the recess to spend the holidays with his daughter, Marjorie, who attends Wellesley college. They have planned a trip including visits to New Haven, Conn., New York City, and Boston.

**FESTIVAL FACTS**

What: Christmas Festival.  
When: 7:30 Tonight.  
Where: Men's Gymnasium.  
Admission: None.  
Detailed Program in News Story.

## CLASSIFIED ADVERTISING

IN THE CARDINAL  
Reaches Every Student

LOST—Scarf; white with a large plaid border. Reward if returned to Cardinal office. 2x18

LOST—Between Co-op and Petrie's coin purse containing check, key, and money. B. 814. Reward. 3x17

FOR SALE—New Chrysler cars for discount during December. Phone Jones, F. 4306. 2x7

TYPING—Expert typing. F. 4282.

FOR RENT—Santa Claus costumes for rent for your Christmas party. Hess Costume shop, 638 Williamson street, B. 970. 4x14

WANTED—Experienced cook for general housework during vacation. B. 1355. 2x17

HELP WANTED—A university girl to help with the housework during the Christmas holidays. B. 6523. 3x17

WE BUY AND SELL ladies', men's new and used clothing. Suits, overcoats, dresses, hats, shoes, etc. Schusters' stores, 404 E. Wilson or 744 W. Washington avenue. Call B. 467 or F. 3674. tf

FOR RENT—Large double front room for girls, near lower campus. B. 2023. 2x15

# PARKWAY

## COME! TODAY!

### --SEE THE VERY BEST STAGE and SCREEN SHOW IN TOWN!!!

**ON THE STAGE**

The Fastest, Jolliest Stage Show We've Ever Given You — It's A DANDY!

# "XMAS HI-JINKS"

WITH YOUR FAVORITE ENTERTAINERS

## JOE SHOER AND HIS BAND

WITH THESE STAR ARTISTS:

Lucille Sisters

THE "TOPS & EVA" OF VAUDEVILLE

Prosper & Maret

SENSATIONAL COLLEGIATE ATHLETES

Bernice Foley

IN SNAPPY SONGS AND STEPS

And Joe's Famous Funsters Including

"Piffles" Jaeger | Frank Uvarri | Jimmy Peddycoart

## ALL COMEDY SCREEN SHOW

A SPARKLING FARCE BY THE MOST POPULAR HUMOROUS WRITER OF THE DAY



CARL LAEMMLE presents

P. G. WODEHOUSE' GREAT STORY

# The SMALL BACHELOR

with BARBARA KENT

A WILLIAM SEITER PRODUCTION  
A UNIVERSAL PICTURE.

Is there such a thing as love at first sight? Efficiency Beaming thought NOT, but Oh! Baby! when he met beautiful Eulalie! It's the Liberty Magazine story ten times funnier in the picture!

**EXTRA ADDED ATTRACTIONS**

'SAMSON AT CALVERT'

A NEW "COLLEGIANS" COMEDY  
NEWS — CARTOONS — PIPE ORGAN

BRING THE KIDDIES TO THE BIG SPECIAL MATINEE TODAY

CONTINUOUS FUN FROM 1 TO 11 P. M.

COME EARLY FOR THE BEST SEATS

# PARKWAY



**ALL U. W. RECORDS KEPT ON FILE IN ALUMNI OFFICE**

Whence does the alumni records office get its name? Very likely from the number and type of complete records which it keeps of university graduates, former students, and present students. Among the various files are included basic alphabets, indicating Memorial union donors, members of the Alumni association, "W" men, and participants in war service; address-

graph geographic and card geographic, to facilitate the mailing of university announcements; current registration; registration withdrawn; registration discarded; biographical folders; correspondence; friends and people interested in the university but who never attended here; and obituary.

The obituary file is the latest source of information concerning Wisconsinites to be added. The date, place, and cause of death are recorded on the obituary cards.

Another sort of record kept at this office is information about all-univer-

sity events such as commencement, Mothers' day, Fathers' day, and Founders' day.

READ CARDINAL ADS

**SEE US**  
Look Your Best  
at the  
**Badger Barber Shop**  
806 University Ave.

**BELMONT**



**TAVERN**

In the New Belmont Hotel  
RESERVATIONS F. 3866

TRAVEL

Make your Summer reservations NOW for passage to Europe. Conducted tours and individual bookings via all Lines.

Passport visas secured

Call Fairchild 433 for Information

**Mueller Travel & Insurance Agency**

126 S. Pinckney St. Est. 1892



**NOTICE!**

**Special Offerings in Leather Goods for Your Vacation Trip**

- 24 Size Suit Case—Special ..... 95c
- Samson's Guaranteed Suit Case ..... \$3.45  
(Extra Large)
- Genuine Leather Bag ..... \$3.95  
(Full Size)
- Samson's Guaranteed Gladstones ..... \$8.95
- Genuine Leather Gladstones ..... \$13.45
- Army Lockers—Special ..... \$5.95
- Steamer Trunks—Size 36—Steel Covered—  
Removable Partition Tray ..... \$15.00

**VERY SPECIAL!**

Wardrobe Trunk—Full Size Vulcanized Fibre—  
—raised top. Four Drawers, locked with locking Bar ..... \$23.50

**The Trunk Shop**

Jewelry and Leather Goods

435 STATE ..... Badger 3125  
Everything for the Traveler

**GARRICK THEATRE**

STARTING TODAY—MATINEE AT 3 P. M.

TONIGHT AT 8:15

**AL JACKSON'S GARRICK PLAYERS**

PRESENTING

**"THE SHEPHERD OF THE HILLS"**

WRITTEN BY AMERICA'S POPULAR AUTHOR

**HAROLD BELL WRIGHT**

MILLIONS Have Read the Book	THE PLAY A Masterful Production	PLAN to SEE This Show Today
AL JACKSON	DOROTHY LA VERNE	MARK HAIGHT
VIRGINIA CULLEN	PAUL NORRIS	
MR. AND MRS. MAGFARLANE	ELOISE HARVEY	
The Entire Company In Excellent Roles		
EXTRA	EXTRA	EXTRA
Two Shows New Year's Eve 8:00 P. M. and 10:30 P. M.	You Can Find Entertainment and Enjoy It	Orders Now Being Taken Order Early

HOLIDAY MATINEE MONDAY, JAN. 2nd AND NEW YEAR'S DAY  
Jolly Christmas Matinee Monday, Dec. 26th

**THE NEW Orpheum**  
Orpheum Circuit Vaudeville  
AND BEST FEATURE PHOTOPLAYS

4 DAYS STARTING TODAY

**ROY PRINZ'S INNOVATION SHOW**

**"ROSE MARIE"**

—WITH—

**WADE BOOTH**

(MASTER OF CEREMONIES)

IN

"SONG CHARACTERIZATIONS"

**BUD HARRIS**

AND SON

WITH

**SAMMY VANDERHURST**

IN

"Push 'Em and Pull 'Em"

**STAN KAVANAGH**

AND CO.

The Australian Juggling Humorist

**MILDRED LASALLE**

IN

SYNCOATED SONGS

**SCARGOLD**

THE INIMITABLE BANJO ARTIST OF THE ROYAL MOUNTED

**SIX PRINZ DANCERS**

ALSO THE AUGMENTED STAGE ORCHESTRA OF 14

PHOTOPLAY—

A GRIPPING LOVE STORY

**Vera Reynolds**

IN

**'ALMOST HUMAN'**

WITH

**Kenneth Thomson**

AN UNUSUAL, NOVEL ABSORBING PHOTOPLAY AS CAPTIVATING AS IT IS THRILLING—YOU'LL FIND IT IS A GENUINE SCREEN TREAT.

4 VAUDEVILLE SHOWS TODAY — 2:30—4:45—7:00—9:15

50c—TODAY—FIFTY CENTS—50c

**Take Home A Box of Keeley's Old Fashion Chocolates**

"The Richest Candy In All The World"

*The Favorite Confection of Wisconsin Alumni for Thirty Years*

Present the Coupon below to any Druggist or Confectioner- He will gladly accept it at full value toward the purchase of a Box of "KEELEY'S."

10c TO THE DEALER: This Coupon, properly filled out will 10c  
be redeemed for 10c by: KEELEY'S CANDIES INC.,  
MADISON, WIS.

Name \_\_\_\_\_

Permanent Home Address: \_\_\_\_\_

Street \_\_\_\_\_

10c City \_\_\_\_\_ State \_\_\_\_\_ 10c