



LIBRARIES

UNIVERSITY OF WISCONSIN-MADISON

The meletean 1947. Vol. 36 1947

[River Falls, Wis]: [Wisconsin State University, River Falls], 1947

<https://digital.library.wisc.edu/1711.dl/23FQSF6EQ7IJF8P>

This material may be protected by copyright law (e.g., Title 17, US Code).

For information on re-use, see

<http://digital.library.wisc.edu/1711.dl/Copyright>

The libraries provide public access to a wide range of material, including online exhibits, digitized collections, archival finding aids, our catalog, online articles, and a growing range of materials in many media.

When possible, we provide rights information in catalog records, finding aids, and other metadata that accompanies collections or items. However, it is always the user's obligation to evaluate copyright and rights issues in light of their own use.

The

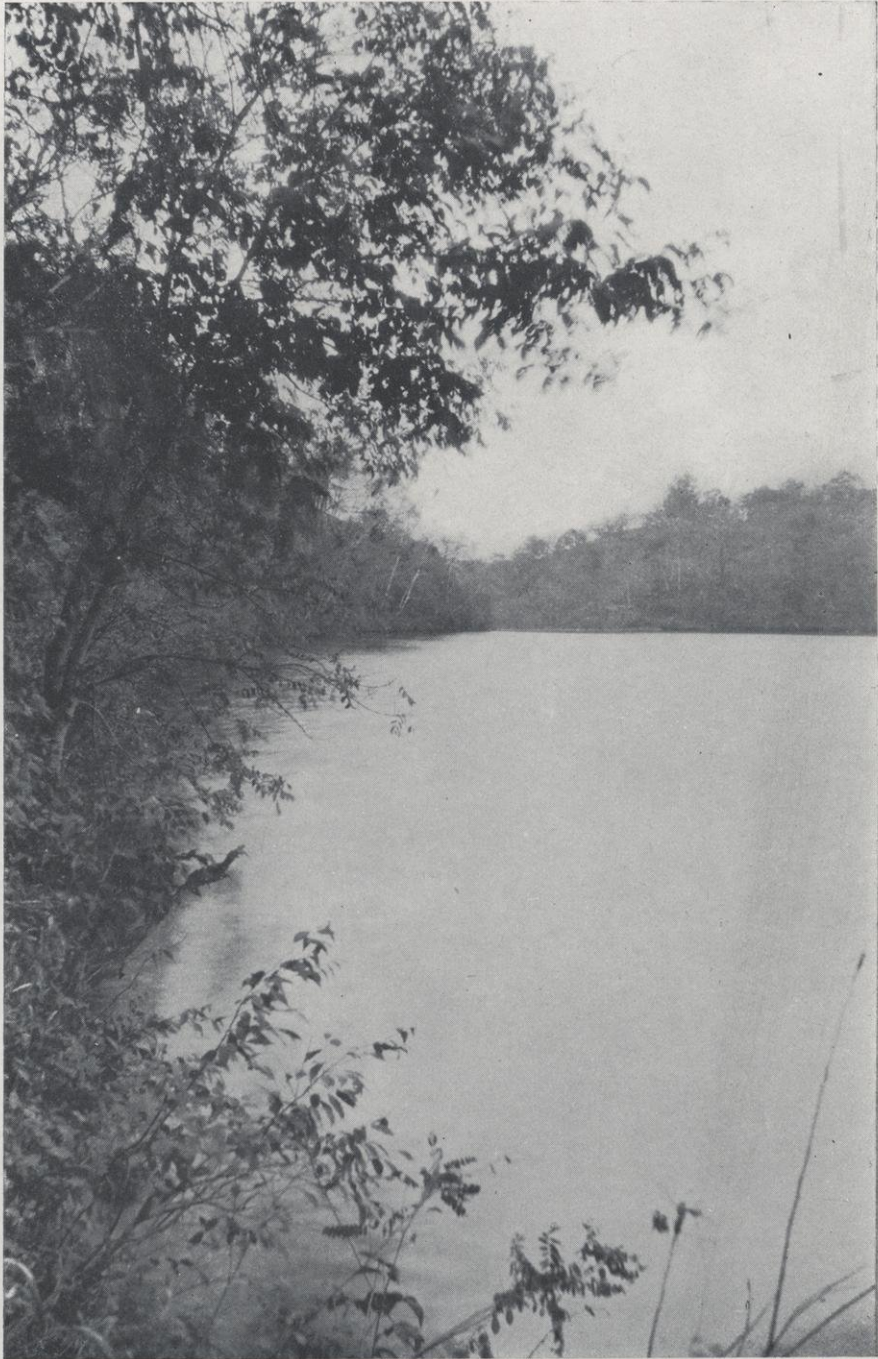
Melietean

1947

10/11/1911

W. Bucha

The Meletean
1947



THE KINNICKINNICK

1917
1918

The

Meletean

1947

Published at the

State Teachers College

RIVER FALLS, WISCONSIN

VOLUME 36

PUBLIC LIBRARY
RIVER FALLS, WIS.



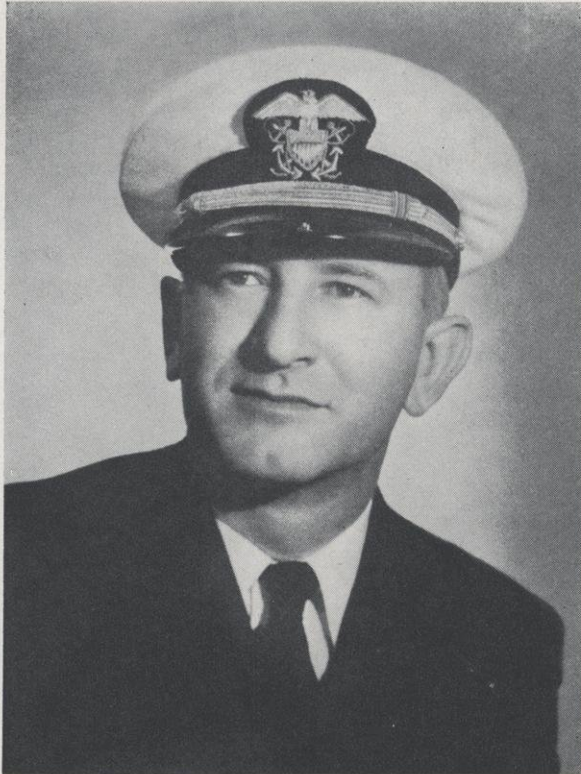
Griff.

5/1959

Administration

15386

← NORTH HALL



DR. CHALMER DAVEE

REGENT

12385

Board of Regents

| | | |
|---|-----------|---------------|
| WILLIAM J. MC INTYRE | - - - - - | EAU CLAIRE |
| ROY C. DAVIDSON | - - - - - | LA CROSSE |
| JOHN CALLAHAN, State Superintendent, Ex-officio | - - - | MADISON |
| MRS. ROBERT C. EBY | - - - - - | MADISON |
| MRS. DORRIS D. MARKS | - - - - - | MILWAUKEE |
| S. W. RADFORD | - - - - - | OSHKOSH |
| ELTON S. KARRMANN | - - - - - | PLATTEVILLE |
| DR. CHALMER DAVEE | - - - - - | RIVER FALLS |
| WILSON DELZELL | - - - - - | STEVENS POINT |
| DR. G. N. SUNDQUIST | - - - - - | SUPERIOR |
| (To Be Appointed) | - - - - - | WHITEWATER |

OFFICERS

| | | |
|-----------------|-----------|-----------------|
| G. N. SUNDQUIST | - - - - - | PRESIDENT |
| EDGAR G. DOUDNA | - - - - - | SECRETARY |
| JOHN M. SMITH | - - - - - | STATE TREASURER |



EUGENE H. KLEINPELL

PRESIDENT

Dr. Eugene H. Kleinpell came to River Falls as president of the college last summer, and the enthusiasm with which he was then received has been more than justified. Active, energetic, keen, alert, generously cooperating with faculty and students on every possible occasion and continually working toward the expansion of our college facilities, he truly merits the respect and admiration which the campus has so wholeheartedly extended to him.

Faculty



JOHN M. MAY
Agricultural Education



CHARLES G. STRATTON
Geography, Geology,
Dean of Men



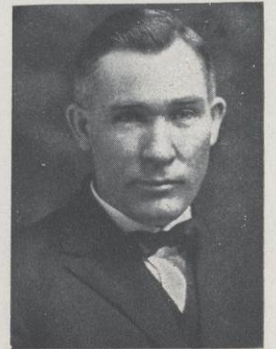
E. J. PRUCHA
Agronomy, Registrar



JOHN G. MOSHER, JR.
Geography



ARTHUR N. JOHNSON
Animal Husbandry



ROY E. SPRIGGS
Agricultural Engineering

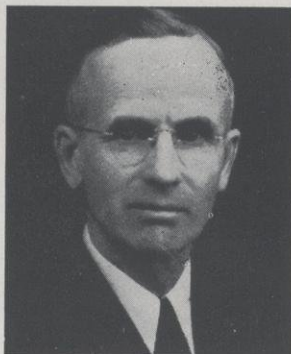


MELVIN WALL
Crops, Soils



WILLIAM SEGERSTROM
Manual Arts

CLYDE B. CAMPBELL
Teacher Training in
Agriculture



ESTHER A. HOWARD
Art



RUDOLPH A. KARGES
Chemistry



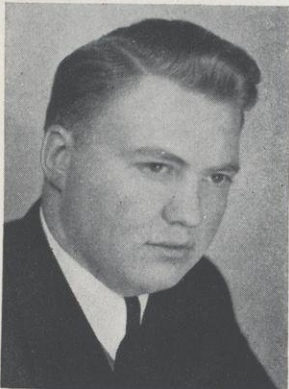
BENJAMIN H. KETTELKAMP
Zoology



THEODORE SETTERQUIST
Chemistry



CATHARINE LIENEMAN
Botany



BERGER KOLBERG
Chemistry



MARGARET C. EIDE
Mathematics



JAMES P. JACOBSON
Physics



GLEN P. JUNKMAN
Mathematics

EARL G. ALBERT
Physics, Mathematics



B. LOUISE HILDER
Art in the Training School



WALKER D. WYMAN
American History
and Government



FRANCIS P. CHISHOLM
English



MAUD A. LATTA
European History



VERA M. MOSS
English



CARLETON C. AMES
Social Science



WALTER J. ENGLER
English, Speech



B. J. ROZEHNAL
Music

MARION HAWKINS
English



CARA AMELIA WHARTON
Piano

C. B. KING
Music





L. G. STONE
Psychology, Education



RHEA GIBSON
Librarian



IRMA HATHORN
Education, Dean
of Women



MARY BRADLEY
Assistant Librarian



ERNST JURGENS
German, Philosophy

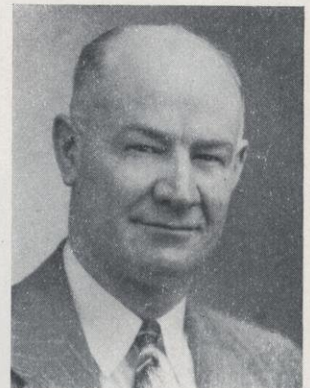


AMY FULLER
Assistant Librarian



F. LEON REYNOLDS
French, Spanish

GEORGE K. SCHLAUGENHAUF
Director of Athletics



MARY LOUISE BRANSTAD
Physical Education



O. W. SJOWALL
Health and Physical
Education



RUSSELL JOHNSTON
Education, Director
Teacher Training



MABEL L. BRIDGES
Elementary Education



MABEL JORSTAD
Rural Education



GLADYS M. ZAK
Elementary Education



NATHALIE DELANDER
Secondary Education
Social Science



MILDRED M. WALTER
Elementary Education



OPAL KNOX
Secondary Education
English



ADELINE C. PATTON
Elementary Education

JEANNE BAILEY
Physical Education



SUSAN HUNTER
College Nurse



LURA CARRITHERS
Elementary Education

The Office Staff



BERNICE MADSEN
Stenographer

ETHEL WEST
Secretary



ESTHER MURPHY
Secretary, Training Department



MARCILE LANGER
Recorder

ROSEMARY NEHMER
Secretary, Veterans Administration



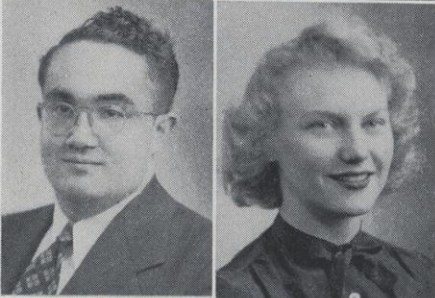
Classes

← SOUTH HALL

Seniors



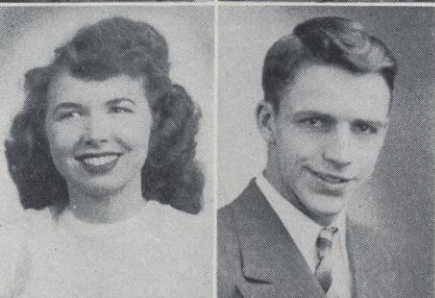
MARIE BRESLIN—Elementary Education, History, English - DOWNING
Alpha Psi Omega 3, 4; Masquers 3, 4; Sigma Chi Sigma 3, 4; WAA 3; 1946 Meletean.



ROGER CERNAHOUS—Science, Mathematics - - - RIVER FALLS
R Club 2; Football 1, 2; Intramural Sports 1, 2.



STEVEN COTONE—Science, Instrumental and Vocal Music - CUMBERLAND
Newman Club 1; YMCA 2, 3, 4; Class Vice-President 3, 4; Band 1, 2, 3, 4; Chorus 3, 4; Business Manager 4; Orchestra 1, 2, 3, 4; Assembly Committee 1, 2; Party Committee 1, 2, 3; Prom Committee 3.



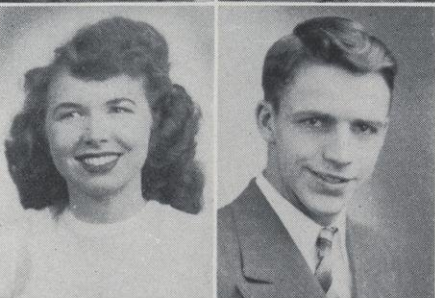
BETH DAVIS—Science, English, Geography - - - HAYWARD
Class Secretary 2; Basketball 1, 2; Volleyball 1, 2; Party Committee 3; Prom Committee 3; Homecoming Committee 3.



BERNARD DONKERSGOED—Agricultural Education, Science - BALDWIN
FFA 2, 3, 4, President 4.



MARVIN H. ERDMANN—Agricultural Education, Science - - ALGOMA
FFA 1, 2, 3, 4, Sentinel 3, Reporter 4; Veterans Association 4; Class Treasurer 3; Class President 4; Intramural Sports 1, 2, 3, 4; Prom Committee 3; Winter Carnival Committee 3; Homecoming Committee 4; Student Senate 4.



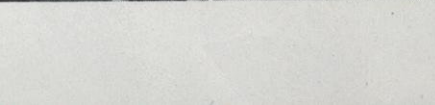
VERA LOUISE FINSTAD—Elementary Education - - RIVER FALLS
Honor Society 2, 3, 4, Secretary-Treasurer 4; Alpha Psi Omega 2, 3, 4; Masquers 1, 2, 3, 4, Secretary 2, President 4; Midgardians 1, 2, 3, 4, President 3, 4; Sigma Chi Sigma 2, 3, 4; YWCA 1, 2, 3; "Cry Havoc" 1, Assistant Director; "Gay Nineties Cabaret" 3; Party Committee 4; Prom Committee 3.



HARRY FROKJER—Agricultural Education, Science - CENTURIA
Gustavus Adolphus 2; Bowling Green State University 3; R Club 1, 3, 4; Veterans Association 3, 4; Football 1, 2, 3; Intramural Sports 1, 2, 3, 4.



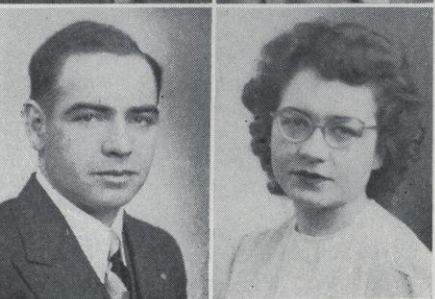
EDWARD J. GRESCHNER—Agricultural Education, Science - CLAYTON
FFA 1, 2, 3, 4, Secretary 3; R Club 2, 3, 4; Veterans Association 4; Intramural Sports 1, 2, 3, 4; Homecoming Committee 3.



LOIS HATCH—Elementary Education, History, English - NEW RICHMOND
Honor Society 3, 4; Midgardians 3, 4; Palette Club 4; YWCA 2, 3, 4; Women's Chorus 2, 3; Student Voice 3, 4; Homecoming Committee 4.



DONALD HAWKINS—Agricultural Education, Science - - ROBERTS
FFA 1, 2, 3, 4.



MARY HAWKINS—Elementary Education, Geography, Art - ROBERTS
Masquers 1, 2, 3, Treasurer 3; Midgardians 1, 2, 3, 4; Newman Club 4; Chorus 1.

FLOYD HENRIKSON—Agricultural Education, Science - RIVER FALLS
 FFA 3, 4, President 4; Honor Society 3, 4; Veterans Association 4;
 Band 1, 2, 3.

CALVIN K. HOPHAN—Chemistry, English - - - - PLUM CITY
 Northwestern University, 1944-45; Veterans Association 4; YMCA 1, 2;
 Basketball 1; Football 2; Intramural Sports 1; Winter Carnival Com-
 mittee 4.

HILDEGARDE HUPPERT—Elementary Education, Art, Science—
RIVER FALLS
 Midgardians 2, 3, 4; Newman Club 4; WAA 1; Prom Committee 3.

LYNN JACKMAN—Agricultural Education, Industrial Arts - RIVER FALLS
 FFA 1, 2, 3, 4; R Club 2, 3, 4; Football 1, 2, 3; Hockey 1, 2.

JOSEPH JANICKI—Agricultural Education, Science, Mechanics - STANLEY
 FFA 1, 2, 3, 4; Veterans Association 4; Photography Club 3.

DOROTHY JENNINGS—Science, History, English - - RIVER FALLS
 Language Club 1; Masquers 2; Palette Club 3; Sigma Chi Sigma 4;
 YWCA 1, 2, 3, 4; "Cry Havoc" 1.

MERLIN R. JENNINGS—Agricultural Education, Science - - BLAIR
 FFA 1, 2, 3, 4; YMCA 1, 2, 3.

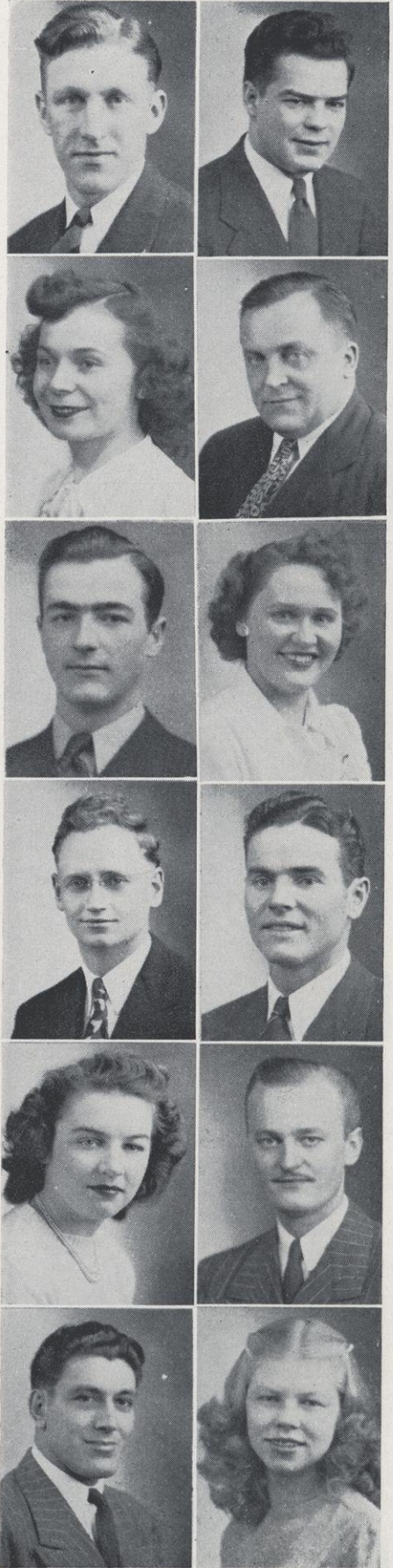
EMMETT KAUL—Agricultural Education, Science - - - - TONY
 FFA 1, 2, 3, 4; Masquers 2, 3; YMCA; Swimming 2; Chorus 3.

LOIS S. KRAUTH—Elementary Education, Art, Geography - RIVER FALLS
 ACE 1, 2, 3; Palette Club 3; YWCA 2; Chorus 2.

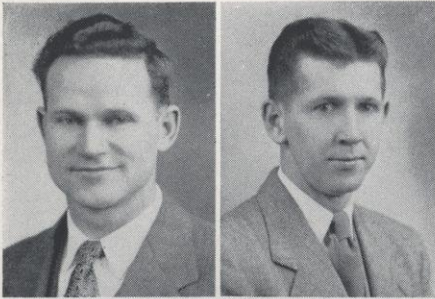
SHERMAN L. KRAUTH, JR.—History, English, Geography - RIVER FALLS
 German Club 2, 3; Homecoming Committee 1, 2, 3.

HOWARD L. KUHN—Agricultural Education, Science - - STANLEY
 FFA 1, 2, 3, 4, Vice-President 3; Veterans Association 3, 4; Intramural
 Sports 3, 4; Homecoming Committee 3.

LOIS LANDBERG—English, History, Mathematics - - Glenwood City
 Honor Society 1, 2, 3, 4, Secretary-Treasurer 2, President 4; Language
 Club 2, 3; Mathematics Club 2, 3; Midgardians 1; Palette Club 1; Sigma
 Chi Sigma 2, 3, 4; YWCA 1, 2, 3, 4, Cabinet 2, 3, 4; Student Voice 1, 2, 3,
 4, Editor 3; Prom Committee 3; Hayward Scholarship, PEO Award,
 Sigma Chi Sigma Scholarship.



PUBLIC LIBRARY
 RIVER FALLS, WIS



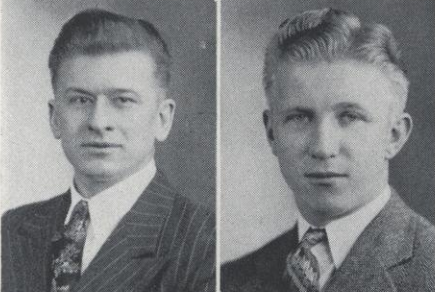
HARRY LARSEN—Agricultural Education, Science - - NEW AUBURN
FFA 2, 3, 4; Honor Society 3, 4; YMCA 2, 3, 4.

EDWARD McCOLLOW—Science - - - - - RIVER FALLS
Newman Club 3, 4; R Club 2, 3, 4; Veterans Association 3, 4; Baseball 2; Basketball 2; Intramural Sports 3, 4; Student Voice 4; Homecoming Committee 3; Winter Carnival Committee 4.



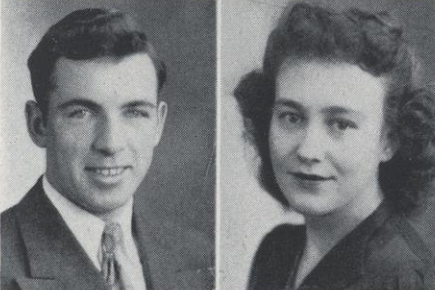
RUDOLPH F. MEEHAN—History, Mathematics, Science - ELLSWORTH
Gustavus Adolphus 4; Mathematics Club 1, 2; Language Club 1, 2; R Club 2, 3, 4, President 3, 4; Veterans Association 4; Basketball 1; Football 1, 2, 3; Intramural Sports 1, 2, 3, 4; Debate 2; Prom Committee 3; Winter Carnival Committee 4.

HOPE METCALFE—English, History, Art - - - - - ARKANSAW
Language Club 3; Palette Club 2, 3, 4, Cabinet 2, 4, President 3; Sigma Chi Sigma 3, 4; Student Senate 3; WAA 1, 2, 4, Cabinet 1, Secretary-Treasurer 2; YWCA 1, 2, 3, 4, Cabinet 1, 2, 3, 4; 1944, 1947 Meletean; Winter Carnival Committee 2, 3.



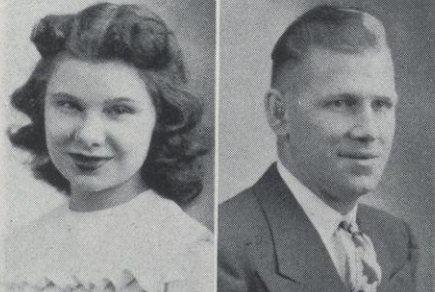
FRANK OLOCKI—History, Science - - - - - STANLEY
Newman Club 4; Veterans Association 4; YMCA 2, 3, 4; Director of Junior Hi-Y.

DONALD QUALMANN—Agricultural Education, Science - IRON RIDGE
Gustavus Adolphus 3; FFA 1, 2, 3, 4; Baseball 3; Football 3; Intramural Sports 1, 2, 3, 4; Debate 3.



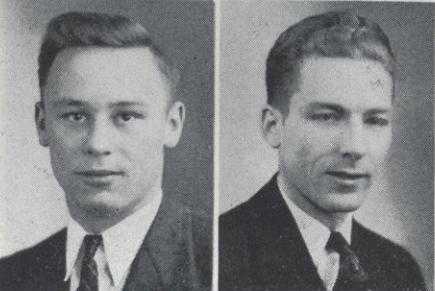
JAMES REDMOND—Agricultural Education, Science - - - - - ARPIN
FFA 3, 4; Newman Club 3, 4; R Club 2, 3, 4; Class Treasurer 3, 4; Baseball 2, 3; Basketball 2; Football 2, 3, 4; Intramural Sports 3, 4; Prom Committee 3.

REBECCA REES—Mathematics, Physics - - - - - ROCK SPRINGS, WYO.
Honor Society 1, 2, 3, 4, Vice-President 3; Language Club 1, 2; Mathematics Club 2, 3, 4, Co-Chairman 2, 3, 4; Sigma Chi Sigma 2, 3, 4; Secretary 3; YWCA 2, 3, 4, Cabinet 3, President 4; Class Treasurer 2; Student Voice 1.



MILLICENT SKONE—English, History, Music - - - - - CUSHING
Alpha Psi Omega 3, 4; Honor Society 1, 2, 3, 4; Language Club 1, 2, Treasurer 2; Masquers 1, 2, 3, 4; Sigma Chi Sigma 2, 3, 4, Vice-President 3, Treasurer 4; Student Senate 1, 2, 3, 4, Secretary 2, 4, President 3; YWCA 1, 2, 3, 4, Cabinet 2, 3; Chorus 1, 2, 3, 4; Girls Sextet 1, 4; Girls Octet 2; "Cry Havoc" 1; "Ladies In Retirement" 2; "Gay Nineties Cabaret" 3; "Birds Have Nests" 4; Student Voice 1, 2, 3; Prom Committee 3; Winter Carnival Committee 3, 4; Alumni Scholarship, Faculty Women's Club Scholarship.

HARTMAN A. SOLI—Mathematics, Science - - - - - RIVER FALLS
Mathematics Club 2, 3, 4; Student Senate 4, Treasurer 4; Veterans Association 3, 4, Board of Directors 3; Assembly Committee 4; Homecoming Committee 2; Winter Carnival Committee 3; Allocation Committee 4.



JOHN STORZER—Science, Mathematics - - - - - OCONTO FALLS
LaCrosse State Teachers College 1; R Club 2, 3, 4, Secretary-Treasurer 4; Baseball 1, 2, 3; Basketball 1, 2, 3; Football 1, 2, 3; Intramural Sports 1, 2, 3, 4; Winter Carnival Committee 4.

RONALD R. STUBER—Agricultural Education, Science - COCHRANE
FFA 1, 2, 3, 4, Sentinel 4; YMCA 1, 2, 3; Class Secretary 4; Intramural Sports 1, 2, 3, 4.

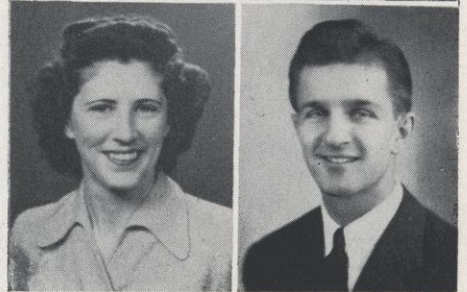
FRED R. UBBELOHDE—History, Mathematics - - NEW RICHMOND
 Lawrence College 1; R Club 2, 3, 4, Vice-President 3, 4; Baseball 2, 3;
 Football 2, 3, 4; Intramural Sports 1, 2, 3, 4.

ALBIN VODAK—Agricultural Education, Mechanics, Science - - YUBA
 FFA 1, 2, 3, 4; Science 1; YMCA 1, 2, 3, 4; Volleyball 1; Prom Com-
 mittee 3.



CATHARINE YANISCH—Elementary Education, English, History—
ELLSWORTH
 Midgardians 1, 2, 3, 4; Newman Club 4; Class Treasurer 3; Allocation
 Committee 3.

EUGENE WIRZ—Chemistry, Mathematics, German - - CHIPPEWA FALLS
 Newman Club 2, 4; R Club 3, 4; Student Senate 2, 3, 4, Vice President
 3, 4; Class President 2, 3; Baseball 2, 3, 4; Basketball 1, 2; Football 1,
 2, 3, 4, Captain 3; Prom King 3.



SENIOR OFFICERS

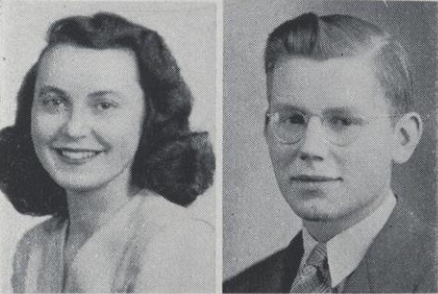
| | | | | | | | |
|----------------|---|---|---|---|---|---|----------------|
| MARVIN ERDMANN | - | - | - | - | - | - | President |
| STEVEN COTONE | - | - | - | - | - | - | Vice-President |
| RONALD STUBER | - | - | - | - | - | - | Secretary |
| JAMES REDMOND | - | - | - | - | - | - | Treasurer |

Juniors



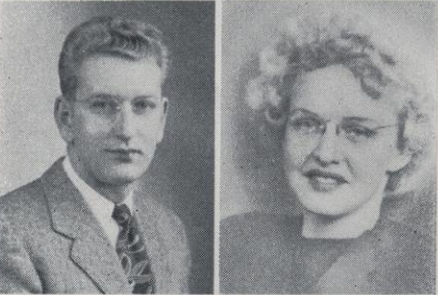
HARRIET ADAM—English, History, Geography - - - - - NYE
Language Club 2; YWCA 1, 2, 3; Band 1, 2; Student Voice 3.

PHYLLIS ANDERSON—English, History, French - - - - - BALDWIN
Language Club 1, 2, Secretary-Treasurer 2; Sigma Chi Sigma 2, 3;
YWCA 1, 2, 3, Cabinet 2, 3; Band 1, 2; Chorus 3; Orchestra 1, 2; 1947
Meletean; Student Voice 1, 2, 3.



**MARGUERITE BAIRD—Elementary Education, Geography, History—
RIVER FALLS**
Honor Society 2, 3; Masquers 2, 3; Sigma Chi Sigma 2, 3; Midgardians
1, 2, 3; Newman Club 3; Student Directory 3; Student Voice 1, 2; Party
Committee 2; Student-Faculty Relations Committee 3; Student Senate
2, 3.

DOYLE BEYL—Agricultural Education, Science - - - - - ST. CROIX FALLS
FFA 1, 3; R Club 3; Football 2; Intramural Sports 1, 3.



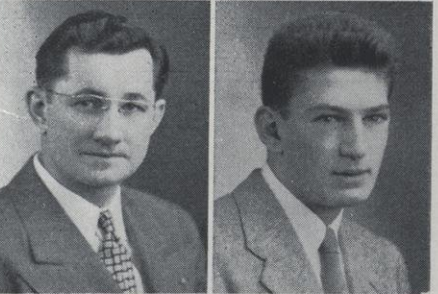
BERNARD BOVEN—Pre-Professional - - - - - WOODVILLE
Veterans Association 3, Treasurer 3.

CHAUVET BOVEN—Pre-Professional - - - - - CHICAGO, ILL.
University of Chicago 1, 2; Palette Club 3.



RAMAN C. BRIGGS—Agricultural Education, Science - - - - - HOLMEN
FFA 1, 2, 3; Veterans Association 3; Band 1, 2, 3; Chorus 3; Men's Glee
Club 3; FFA Quartette 3.

AUDREY CORCORAN—Elementary Education - - - - - PRESCOTT
ACE 1, 2, 3.



**TRYN J. DE CRACIUM—Elementary Education, Geography, History—
CLEAR LAKE**
Veterans Association 3; YMCA 1, 2, 3; Men's Glee Club 3, President 3.

ROY DURST—Science, Geography - - - - - ALGOMA
Lawrence College 1; Baseball 1; Basketball 2; Football 3.



IONE ENGEN—Elementary Education, Science, Art - - - - - FREDERIC
Masquers 1; Palette Club 3; Sigma Chi Sigma 3; WAA 1, 2; YWCA
1, 2, 3.

RUTH ERICKSON—Elementary Education - - - - - STOCKHOLM
ACE 1, 2, 3; YWCA 1, 2, 3.

LILA ESTENSON—English, History, Music - - - NEW RICHMOND

Honor Society 1, 2, 3; Language Club 1, 2, President 2; Sigma Chi Sigma 2, 3; YWCA 1, 2, 3, Cabinet 2, 3; Chorus 1, 2, 3; Accompanist Men's Glee Club 3; Orchestra 1, 2; Student Faculty Relations Committee 2; Student Senate 1, 2.

LOLA ESTENSON—Mathematics, Physics, Music - - NEW RICHMOND

Honor Society 1, 2, 3, President 2; Language Club 2; Mathematics Club 1, 2, 3, Program Chairman 1, 2, 3; Sigma Chi Sigma 2, 3, President 3; YWCA 1, 2, 3, Cabinet 3; Band 2; Chorus 1, 2, 3; Girls Sextet 3; Orchestra 1, 2, 3; Student Voice 2; Assembly Committee 3; Student Senate 2, 3.

GEORGE FRENCHICK—Agricultural Education, Science - WEYERHAUSER

City College of New York 2; FFA 1, 2, 3; Mathematics Club 1; Newman Club 3; Veterans Association 2, 3; Intramural Sports 1, 2, 3.

LILLIAN GERAETS—English, History, Latin - - - ELMWOOD

Language Club 1, 2, 3, Secretary-Treasurer 3; Newman Club 3; Sigma Chi Sigma 2, 3, Secretary 3; Class Secretary 2; Basketball 1; Volleyball 2; Student Voice 2, 3.

MARJORIE GILSTAD—Elementary Education - - - BALDWIN

Midgardians 3; Palette Club 1, 2; Rural Life Club 1, 2; WAA 1; YWCA 1; Chorus 1, 2.

WILLIAM GUTZLER—Unclassified - - - RIVER FALLS

Masquers 1, 2, 3; Mathematics Club 2, 3; Veterans Association 3; Class Vice-President 1; "Lost Horizon" 2; Homecoming Committee 3; Party Committee 3; Prom Committee 3.

JOHN HAYES—Science, English - - - CUMBERLAND

Newman Club 3; YMCA 1, 2, Cabinet 1, 2; Football 1, 2; Intramural Sports 2; Chorus 2; Men's Quartette 2; Dance Committee 2.

TERRENCE HAYES—Science, History, English - - - CUMBERLAND

Alpha Psi Omega 2, 3; Language Club 2; Masquers 2, 3; Newman Club 3; YMCA 1, 2, 3, Cabinet 2; Intramural Sports 2, 3; Chorus 2; Men's Quartette 2; "Elite Spirit" 2; Party Committee 3; Homecoming Committee 3; Prom Committee 3.

DORIS JACKMAN—Elementary Education, English, Art - RIVER FALLS

ACE 2, 3; Language Club 1; Masquers 1, 2; YWCA 1; "The Monkey's Paw" 1; Student Voice 1, 2, 3.

AUDREY JANZ—Science, Mathematics - - - MILWAUKEE

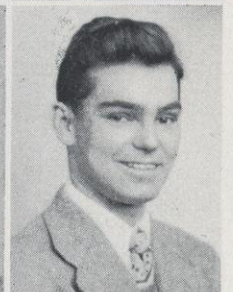
University of Minnesota 2; Mathematics Club 3.

MILDRED JENSEN—Elementary Education, Art - - - MENOMONIE

Dunn County Normal School 1, 2; Palette Club 3, President 3; YWCA 3.

LLOYD JILOT—Mathematics, Science, History - - - FORESTVILLE

Mathematics Club 1, 2, 3; Veterans Association 3; YMCA 1; Football 1, 2, 3; Intramural Sports 1, 2, 3; Homecoming Committee 1, 2.





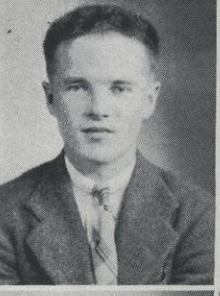
FELICE JORSTAD—Elementary Education, Science - - - HUDSON
ACE 2, 3; YWCA 1, 2; Band 1.



JOYCE JULIAN—History, English - - - MAIDEN ROCK
Honor Society 1, 2, 3, Secretary 2; Language Club 2; Sigma Chi Sigma 2, 3; YWCA 1, 2, 3, Cabinet 3; Class Treasurer 3; J. H. Ames Scholarship.



DOROTHY KAY—Elementary Education - - - RIVER FALLS
LaCrosse State Teachers College 2; ACE 3; Newman Club 2, 3; Homecoming Committee 1; Prom Committee 3.



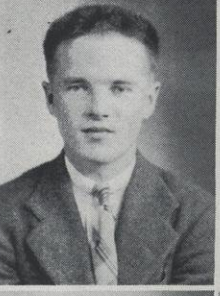
ANN LAUFENBERG—Biology, English, German - - RIVER FALLS
Sigma Chi Sigma 3; Class President 2, Class Secretary 3; Winter Carnival Committee 1, 2; Homecoming Committee 3.



JAMES LEADHOLM—Pre-Professional - - - AMERY
Basketball 1; Intramural Sports 1, 2, 3.



HAROLD LE JEUNE—Agricultural Education, Science - - BARRON
R Club 1, 2, 3; Football 1, 2; Intramural Sports 1, 2, 3.



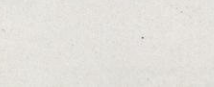
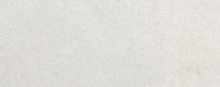
RICHARD LE JEUNE—Pre-Professional - - - BARRON
Intramural Sports 1, 2, 3.



HARRIET LONG—Unclassified - - - RIVER FALLS
Sigma Chi Sigma 2; YWCA 1.



JANE MALISON—Elementary Education - - - RIVER FALLS
Eau Claire State Teachers College 1, 2; ACE 3.



STEPHEN MARKOWSKI—Agricultural Education, Science - RIVER FALLS
FFA 1, 2, 3; Veterans Association 3.

VIRGIL MARTINSON—Agricultural Education, Science - - COLFAX
FFA 1, 2, 3; R Club 2, 3; Veterans Association 3; Baseball 1, 2, 3; Football 1; Intramural Sports 1, 2, 3.

WALLACE MEHLBERG—Agricultural Education, Science - - Caroline
FFA 1, 2, 3; R Club 1, 2, 3; Veterans Association 3; YMCA 1, 2; Baseball 1, 2, 3; Intramural Sports 1, 2; Band 1, 2.

WILLARD MILLER—History, Biology, English - - - SPRING VALLEY
Stout Institute 1; Newman Club 3; Veterans Association 2, 3.

BETTY MYERS—English, History, French - - - - - KNAPP
Language Club 1, 2; Sigma Chi Sigma 2, 3; YWCA 1, 2, 3; Debate 3;
Student Voice 1, 2, 3; Alumni Scholarship 2.

GLEN NELSON—Agricultural Education, Science - - - RIVER FALLS
FFA 3; Veterans Association 3; Class Secretary 2; Chorus 1, 2, 3; Men's
Quartette 3; "Lost Horizon" 2; 1947 Meletean.

ARTHUR NEVALA—Geography, History, Science - - - - WITHEE
Taylor County Normal 1; Eau Claire State Teachers College 2; Veterans
Association 3; Class Treasurer 2.

**LAWRENCE NIEDZWIECKI—Agricultural Education, Science—
RIVER FALLS**
FFA 1, 2, 3, Treasurer 3.

DELORES PAYSON—Elementary Education, Spanish, Music - HUDSON
Language Club 1, 2; Midgardians 2, 3, Vice-President 3; Sigma Chi
Sigma 2, 3; YWCA 2, 3, Cabinet 3; Chorus 2, 3.

RAYMOND POLZIN—Agricultural Education, Science - - - - CADOTT
University of Wisconsin 1945; FFA 2, 3; YMCA 1, 2, 3; Veterans Asso-
ciation 3; Intramural Sports 2.

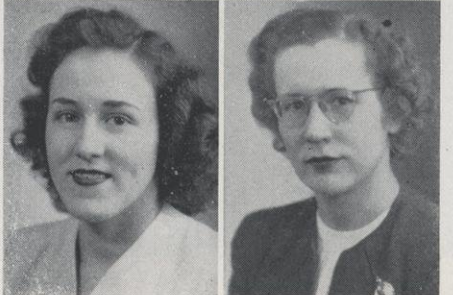
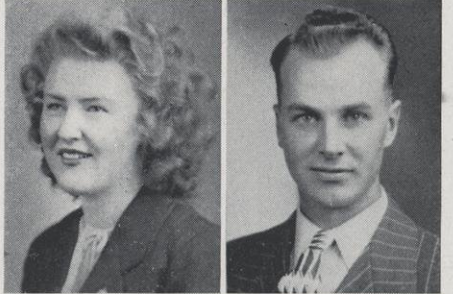
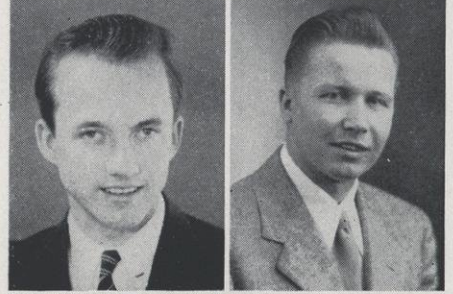
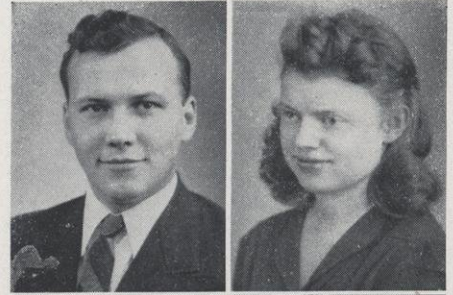
KATHLEEN REID—Elementary Education, Music, Art - HASTINGS, MINN.
Eveleth Junior College 1; ACE 2, 3; Newman Club 3; Palette Club 2;
Chorus 3; 1947 Meletean; Student Voice 2.

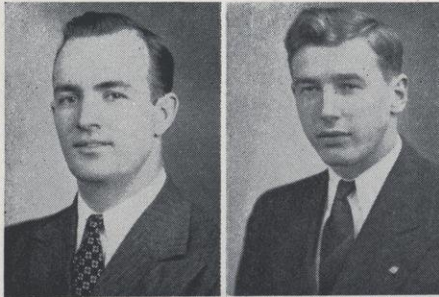
ONA SABBY—Science, German, Social Science - - - SPRING VALLEY
Hamline University 1; Language Club 2; Mathematics Club 1; Sigma
Chi Sigma 2, 3; Band 1, 2; Chorus 2; Orchestra 1, 2.

MARVIN SATHER—Agricultural Education, Science - RIVER FALLS
FFA 1, 2, 3; Student Senate 3; Veterans Association 2, 3; Class Presi-
dent 3; Party Committee 3; Prom Committee 3.

ELAINE STUCKY—English, History, French - - - - RICE LAKE
Language Club 1, 2, Vice-President 2; Sigma Chi Sigma 2, 3; YWCA
1, 2, 3, Cabinet 1, 2; Chorus 1, 2, 3; Girls Sextet 3; Student Voice 1;
Party Committee 3.

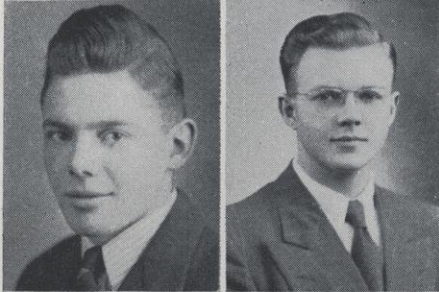
**LORNA SWANBERG—Elementary Education, Geography, English—
GRANTSBURG**
Honor Society 3; Palette Club 3, Treasurer 3.





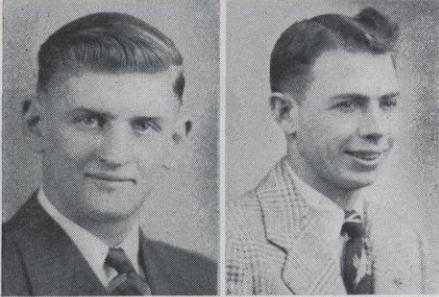
ROY S. SWENSON—Chemistry, Conservation - - - - HAWKINS
Stevens Point State Teachers College 2; Veterans Association 3.

LEONARD F. VIK—Science, Mathematics, Geography - - - - AMERY
Chorus 1, 2, 3.



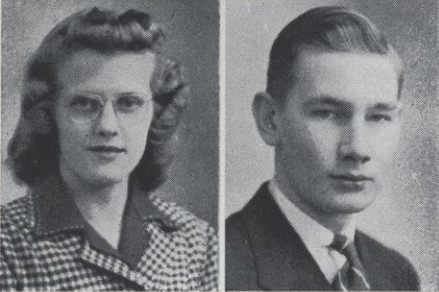
GORDON VINE—Agricultural Education, Science - - - - NEILLSVILLE
FFA 1, 2, 3; R Club 2, 3; Veterans Association 3; Class Vice-President 3;
Baseball 2, 3; Basketball 1, 3.

GERALD C. WALLEN—Science, Mathematics - - - - RIVER FALLS
Veterans Association 3; YMCA 1, 2, 3; Band 1, 2, 3.



GEORGE R. WEBB—Agricultural Education, Science - - RIVER FALLS
FFA 1, 2, 3, Sentinel 2.

WALTER T. WEIHRUCH—Agricultural Education, Science - - MEDFORD
FFA 1, 2, 3; YMCA 1, 2.



EDITH WHITAKER—Elementary Education, History, English - - CHETEK
Midgardians 1, 2, 3; YWCA 1, 2, 3; Band 3; Chorus 2; Student Voice
1, 2, 3.

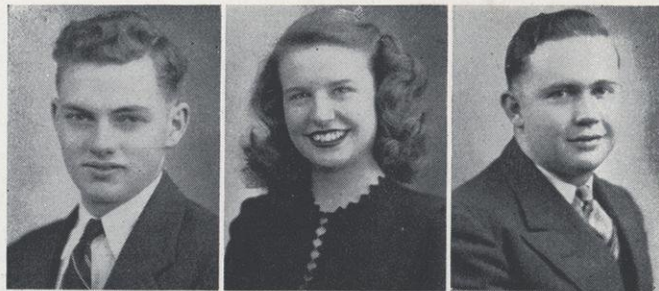
RAYMOND ZELINSKI—Agricultural Education, Science - - WEYERHAUSER
Lawrence College 2, 3.

JUNIOR OFFICERS

| | | | | | | | |
|----------------|---|---|---|---|---|---|----------------|
| MARVIN SATHER | - | - | - | - | - | - | President |
| GORDON VINE | - | - | - | - | - | - | Vice-President |
| ANN LAUFENBERG | - | - | - | - | - | - | Secretary |
| JOYCE JULIAN | - | - | - | - | - | - | Treasurer |

Sophomores

DAVID AFDAHL—Agricultural Education - HAMMOND
 AMY ANDERSON—Secondary - - - RIVER FALLS
 HOWARD BAKER—Pre-Professional - - - KENNAN



DOREEN BARFKNECHT—Secondary - - RICE LAKE
 JOHN BERGGREN—Pre-Professional - - BALDWIN
 EVELYN BJORNSTAD—Secondary - - - CADOTT



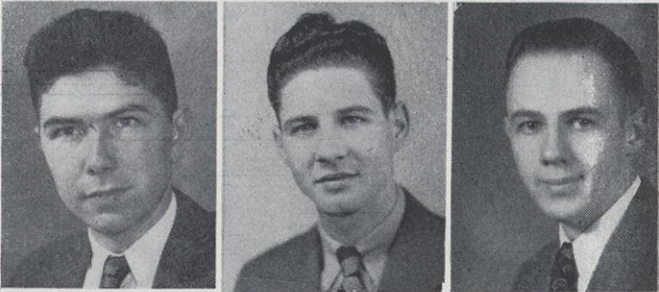
JANET BLEIR—Elementary - - - - - BALDWIN
 EVELYN BLOOM—Rural - - - - - GRANTSBURG
 BETTY BOE—Elementary - - - - - DEER PARK



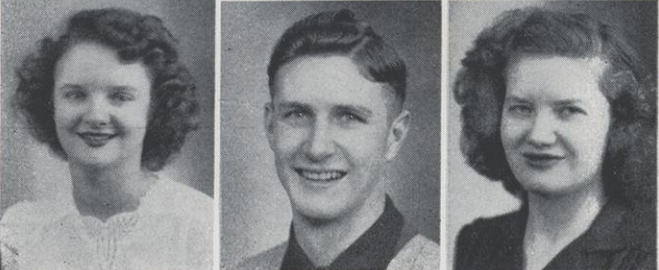
LOIS BRANDT—Secondary - - - - - HUDSON
 HOWARD BREVOLD—Pre-Professional - - AMERY
 BYRON BROOKE—Secondary - - - SPRING VALLEY



EUGENE BROWN—Secondary - - - BLOOMINGTON
 VIRGIL BYNG—Unclassified - - - RICE LAKE
 RICHARD CARPENTER—Secondary - MAIDEN ROCK



JOYCE CONDIT—Elementary - - - - - ELMWOOD
 CHARLES COPELAND—Unclassified - TURTLE LAKE
 MARY PATRICIA COX—Secondary - - - HUDSON

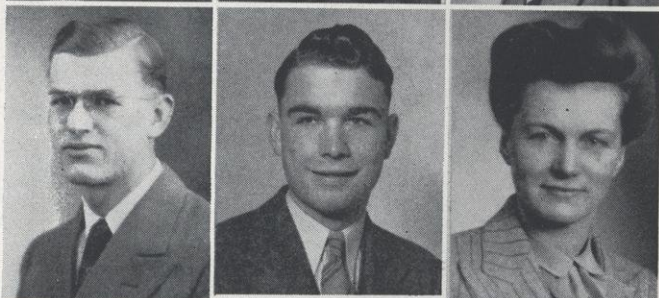




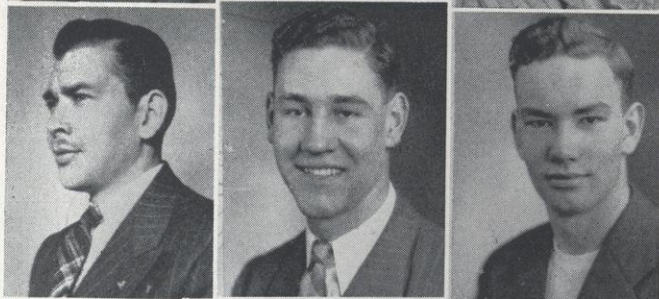
GLORIA CREE—Secondary - - - - CLEAR LAKE
MARGERY CREIGHTON—Unclassified - - - - NYE
ALTON DAHL—Secondary - - - - BLOOMINGTON



LOUIS DANIEL—Agricultural Education - GRANTSBURG
WILLIAM DAWSON—Pre-Professional - RIVER FALLS
TERRY DOONAN—Secondary - - - - OWEN



KENNETH ENLOE—Secondary - - - - RIVER FALLS
WILLIS ERICKSON—Agricultural Education - PLUM CITY
BEULAH EUKEL—Secondary - - - - RIVER FALLS



LLOYD FALK—Secondary - - - - STAR PRAIRIE
ARNOLD FEILER—Agricultural Education - ELMWOOD
DEAN FENNER—Unclassified - - - - RICE LAKE



FRANCIS FOGERTY—Secondary - - - - DRESSER
MARY FORTHUN—Secondary - - - - SPRING VALLEY
ALBERT FRANCO—Agricultural Education - CLAYTON



ELSIE FREIER—Rural - - - - BELDENVILLE
LA VONNE GEVING—Unclassified - - - - SPRING VALLEY
WAYNE GREENLEE—Agricultural Education - ST. CROIX

WILLARD HAMM—Agricultural Education - LADYSMITH
 HOWARD HANNON—Unclassified - - GREEN BAY
 ELSIE MAE HANSON—Unclassified - RIVER FALLS



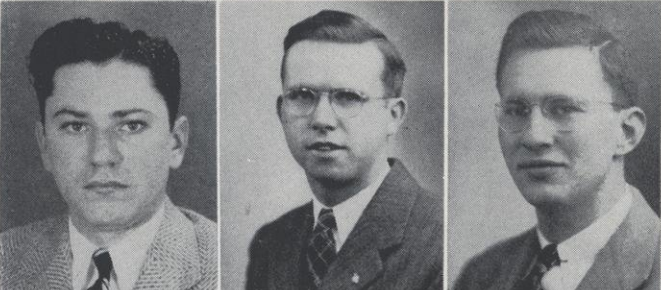
ERLING HANSON—Secondary - - - - CHETEK
 ELEANOR HARRIS—Secondary - - - RIVER FALLS
 WILLIAM HAYES—Pre-Professional - CUMBERLAND



CALVIN HEDLUND—Unclassified - - CLEAR LAKE
 BERNICE HENDRICKSON—Secondary - RIVER FALLS
 JACK HENNEMAN—Pre-Professional - RIVER FALLS



THEODORE HILLERT—Agricultural Education—
 GRANTON
 LESTER HORN—Secondary - - - NEW AUBURN
 RICHARD HOWARD—Pre-Professional - NEW RICHMOND

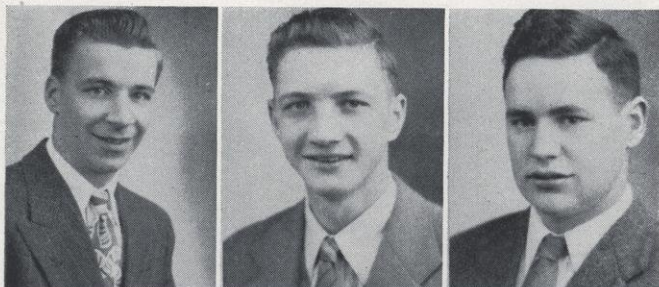


FREDERICK HOWE—Secondary - LONG BEACH, CAL.
 AUDREY HYGNSTROM—Elementary - MAIDEN ROCK
 DONALD IVERSON—Pre-Professional - - ST. CROIX



GORDON JACOBSON—Agricultural Education - HIXTON
 MAXINE JENSEN—Elementary - - - - CUSHING
 JOAN JOHNSON—Elementary - WISCONSIN DELLS





WARREN JOHNSON—Secondary - - - - BARRON
 CARL KARNES—Secondary - - - - MENOMONIE
 ROBERT KINNEY—Agricultural Education - HUDSON



GEORGE KLINGELHOETS—Secondary - TURTLE LAKE
 MARILYN KRUEGER—Secondary - NEW RICHMOND
 ETTA KRUMMEL—Rural - - - - ELLSWORTH



BETH LANE—Unclassified - - - - MILWAUKEE
 BETTY LOHMAN—Unclassified - - - - HUDSON
 RUSSEL LONG—Secondary - - - - RIVER FALLS



ROBERT LOVELL—Agricultural Education - RIVER FALLS
 ROSE M. LUTZEN—Secondary - - - - ELK MOUND
 ELMER MELLUM—Rural - - - - RIVER FALLS



DALE MORLEY—Unclassified - - - - NEW AUBURN
 RUTH NELSON—Elementary - - - - RIVER FALLS
 AUDREY NEUHOFF—Elementary - - - - FEPIN

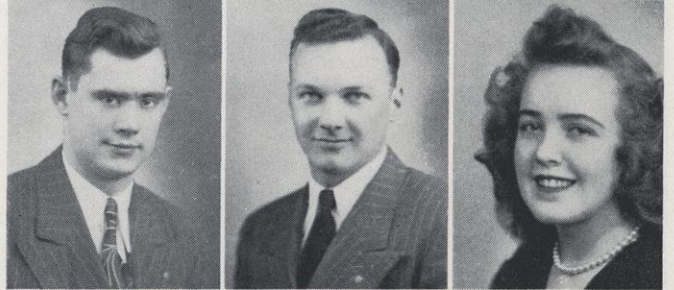


JOHN NORRIS—Pre-Professional - - - - BLOOMER
 HENRY OGDEN—Pre-Professional - - - - OSCEOLA
 JANE OLSON—Elementary - - - - HUDSON

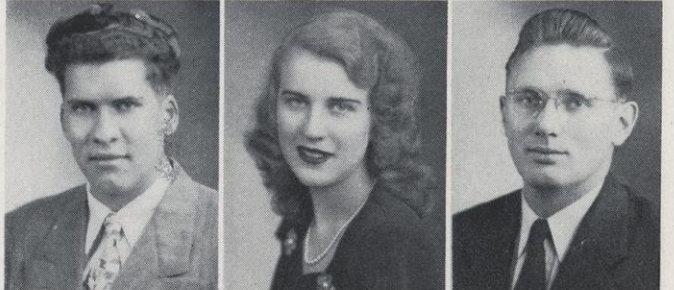
ROBERT OLSON—Agricultural Education - GILLET
 LORRAINE PALAN—Secondary - - - - CADOTT
 DALE PARNELL—Secondary - - - - SOMERSET



MARVIN PASSOW—Agricultural Education - COCHRANE
 NORMAN PAUTZ—Agricultural Education - HILBERT
 MARY PEDERSON—Elementary - - - - WILSON



ALLAN S. PETERSON—Pre-Professional - CUMBERLAND
 ELAINE PETERSON—Unclassified - - COMSTOCK
 GRAYDON PETERSON—Agricultural Education - COLFAX



KERMIT QUINNELL—Agricultural Education - KENNAN
 MILDRED REINKEY—Elementary - - - - ELMWOOD
 ELWYN ROBERTS—Secondary - - - - HAMMOND



MARGARET ROCK—Elementary - - - - HUDSON
 PAUL D. ROGNES—Agricultural Education - ETTRICK
 LLOYD ROSEN—Agricultural Education - DOWNING

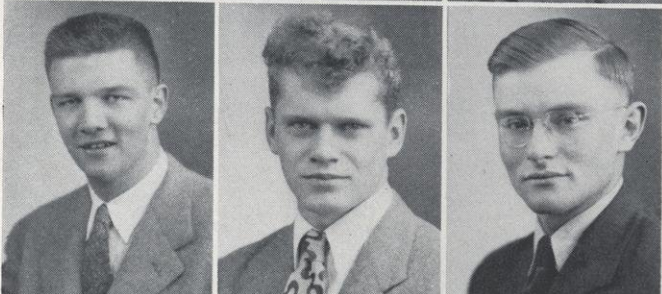


DAVID RUHSAM—Secondary - - - - NEW LONDON
 EUGENE SCHERMER—Secondary - - - - RICE LAKE
 VIOLET SCHNITZLER—Rural - - - - GLENWOOD CITY





JOHN SCHOCK—Secondary - - - - DERONDA
 RUTH SEEKAMP—Unclassified - - - RIVER FALLS
 RONALD SOBOTTKA—Unclassified - - PLUM CITY



MARK STONE—Secondary - - - - BARABOO
 RICHARD SWENSON—Secondary - PRAIRIE FARM
 CHARLES TAYLOR—Secondary - - - - OWEN



FREDERIC THOME—Secondary - - SPRING VALLEY
 CHRISTINE THOMPSON—Pre-Professional - CABLE
 ALBERT TSCHUDY—Agricultural Education - MONROE



EMIL VANDERMAUSE—Agricultural Education—
 FORESTVILLE
 EMILY WAHLQUIST—Unclassified - NEW RICHMOND
 LOIS WARD—Secondary - - - - RIVER FALLS



DON WEBSTER—Pre-Professional - - - - AMERY
 JOHN WHITAKER—Pre-Professional - - - CHETEK
 LEONARD WHITMORE—Unclassified - - - CHETEK



RICHARD WILL—Unclassified - - - - ALMA
 LILLIAN WRIGHT—Rural - - - - CLEAR LAKE
 JOE YOUNG—Secondary - - - - HUDSON

SOPHOMORE OFFICERS

- JOSEPH YOUNG - - - - - President
 HOWARD HANNON - - - - - Vice-President
 MARY FORTHUN - - - - - Secretary
 ELEANOR HARRIS - - - - - Treasurer

Freshmen

MARGARET AASTERUD—Unclassified - RIVER FALLS
 GORDON AHLGREN—Agricultural Education—
 RIVER FALLS
 ARTHUR ANDERSON—Pre-Professional—
 SPRING VALLEY

DONN ANDERSON—Secondary - - RIVER FALLS
 THOMAS ANDERSON—Unclassified - SPRING VALLEY
 FERN E. AUSEN—Unclassified - - BALSAM LAKE

GLEN AUSEN—Pre-Professional - - BALSAM LAKE
 DONALD BARRITT—Unclassified - - - BARRON
 LESTER BARTELT—Secondary - - - - CASCADE

LLOYD BARTO—Unclassified - - - - GILE
 MARY BATEMAN—Pre-Professional - RIVER FALLS
 LAWRENCE BEECHTREE—Agricultural Education—
 ONEIDA

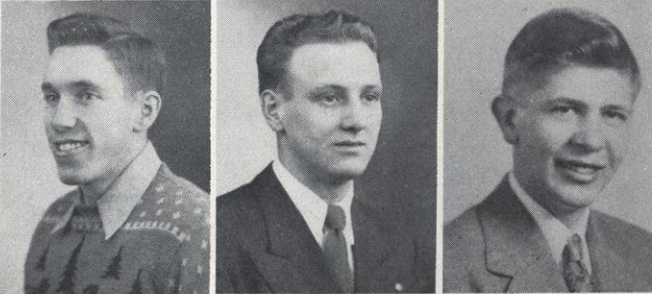
LLOYD BENJAMIN—Unclassified - - - - NELSON
 ANNALEE BENSON—Unclassified - - RIVER FALLS
 DAVID BENSON—Unclassified - - - RIVER FALLS

VINCENT BENSON—Unclassified - - - - AMERY
 DUANE BERGLUND—Pre-Professional - - OSCEOLA
 HAROLD BIZER—Agricultural Education - MEDFORD

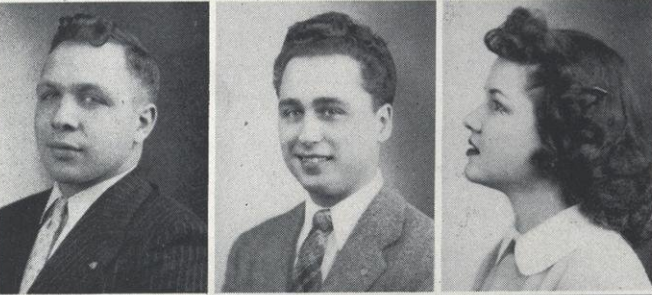




BASIL BLAKELY—Pre-Professional - - - VIOLA
 WANELL BOHN—Pre-Professional - - - FREDERIC
 RALPH BOLLIGER—Agricultural Education - BAYFIELD



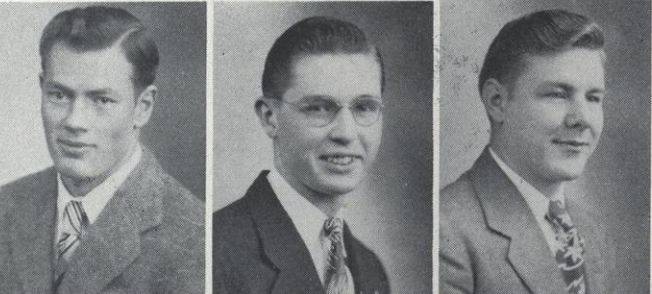
MARSHALL BONNEVILLE—Pre-Professional—
 CUMBERLAND
 EMIL BOROWSKI—Pre-Professional - - - ALMENA
 EARL BORNER—Unclassified - - - - PRESCOTT



HARRY BORNER—Secondary - - - RIVER FALLS
 ROY BREDE—Pre-Professional - - - - MEDFORD
 GLADYS BRIESMEISTER—Secondary - - ALMENA



CHARLES BRINK—Unclassified - - - MEDFORD
 ELAINE BROWN—Secondary - - NEW RICHMOND
 LEONARD BUNE—Agricultural Education—
 SPRING VALLEY



RUEBEN CHARTRAW—Pre-Professional - CUMBERLAND
 CLINTON CHRISTIANSON—Unclassified - DEER PARK
 LLOYD L. COBURN—Unclassified - - - FREDERIC



GAIL CRIST—Secondary - - - - RIVER FALLS
 ALLEN DANIELSON—Agricultural Education - CADOTT
 VERYL DATWYLER—Unclassified - - RIVER FALLS

FRANKLIN DIETZLER—Secondary - - - ROBERTS
 JAMES DI ULIO—Unclassified - - - HURLEY
 FLOYD DOERING—Agricultural Education - DUNDAS



AUDREY DRISCOLL—Unclassified - HASTINGS, MINN.
 LE ROY DuBOIS—Pre-Professional - - - CHETEK
 DOROTHY EATON—Pre-professional - - - PRESCOTT



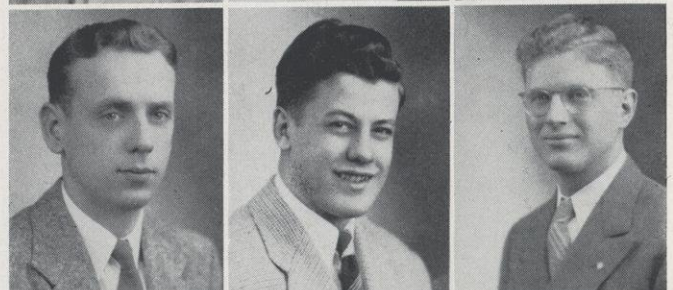
MARGERY ENGELS—Unclassified - - - CENTURIA
 ENID ERICKSON—Secondary - - - HANNIBAL
 SOPHIE FALL—Unclassified - - - CLAYTON



ANNA FIELD—Unclassified - - - PRESCOTT
 HARRIETTE FINKE—Pre-Professional - SPRING VALLEY
 JEROME FINN—Pre-Professional - - - RIVER FALLS

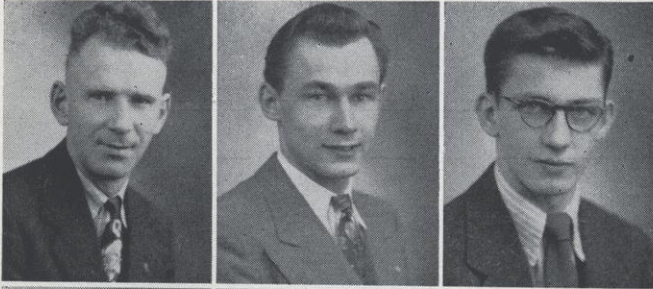


EUGENE FISHER—Unclassified - - - DEER PARK
 EMMETT FLEMING—Secondary - - - FREDERIC
 DEAN FLYGSTAD—Unclassified - - - BARRON

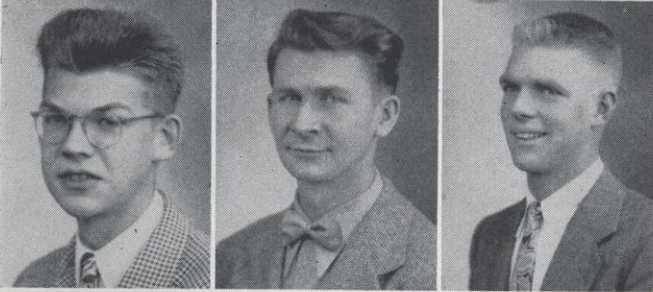


ROY FOREHAND—Unclassified - - - MEDFORD
 WILLIAM FORSBLOM—Unclassified - BAYPORT, MINN.
 JENS FOSSUM—Unclassified - - - FREDERIC

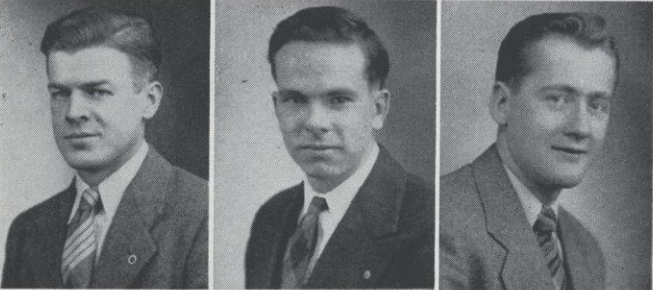




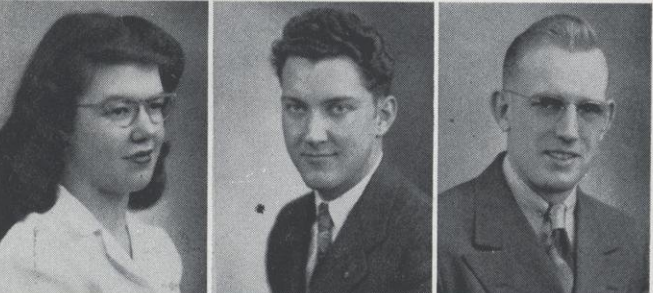
STANLEY FRANK—Agricultural Education - OSCEOLA
 WILLIAM FRANZ—Agricultural Education—
 CUMBERLAND
 RICHARD FREEMAN—Secondary - - RIVER FALLS



PHILIP FROILAND—Pre-Professional - - DALLAS
 HOWARD GARFIELD—Pre-Professional—
 SPRING VALLEY
 KERMIT GARLID—Pre-Professional - BELDENVILLE



WAYNE GARLID—Unclassified - - - ELLSWORTH
 JOHN GAUSTAD—Secondary - - - RIVER FALLS
 ROBERT GAVIC—Pre-Professional - SPRING VALLEY



ELAINE GIBBON—Unclassified - - - HUDSON
 MARVIN GILBERTSON—Secondary - CLEAR LAKE
 WILBERT GIPP—Agricultural Education - BONDUEL

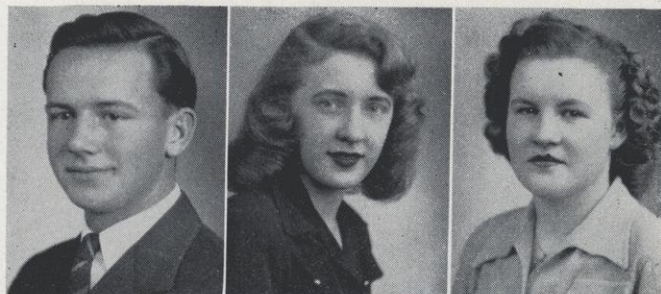


JOHN GOSPODAR—Unclassified - - - STANLEY
 DAVID GRAHAM—Pre-Professional - - - ROBERTS
 RAY GRAJEK—Unclassified - - - CHICAGO, ILL.



ROBERT GRAMLOW—Pre-Professional - FOND DU LAC
 PATRICIA GREENFIELD—Unclassified - RIVER FALLS
 ROBERT GREFE—Agricultural Education - NECEDAH

EUGENE GREGOR—Unclassified - - RIVER FALLS
 VIRGINIA GULLICKSON—Unclassified - WOODVILLE
 MYRNA HAGUE—Elementary - - - MAIDEN ROCK



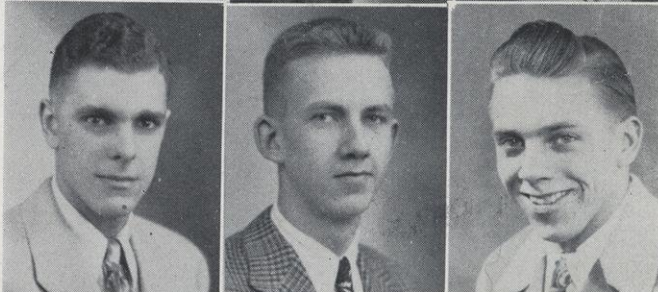
HERBERT HALVERSON—Pre-Professional - AMERY
 RICHARD HALVERSON—Secondary - - - DALLAS
 ALFRED HANSEN—Secondary - - - - - LUCK



PHILIP HANSEN—Agricultural Education - CHETEK
 GORDON HANVELT—Secondary - - - RIVER FALLS
 PATRICK HARRINGTON—Agricultural Education—
 SHELL LAKE



DAVID HASS—Secondary - - - - RIVER FALLS
 GERALD HEALY—Unclassified - - - RIVER FALLS
 LELAND HEDLUND—Secondary - - - CLEAR LAKE

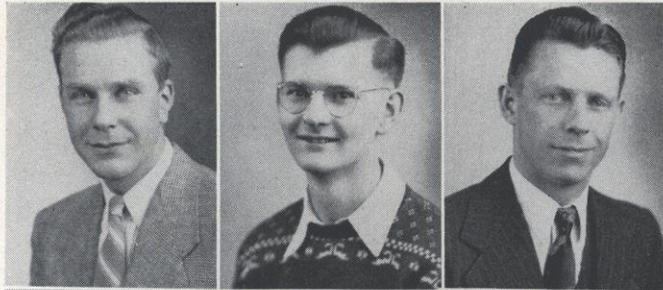


RAYMOND HENRY—Secondary - NEW YORK, N. Y.
 ROSALIE HILDEN—Rural - - - - ELLSWORTH
 MARY IRENE HILLARY—Unclassified - - HUDSON



EDWIN HILLSTEAD—Pre-Professional - WOODVILLE
 JERALD HINKE—Agricultural Education - JIM FALLS
 CHARLES HOCKING—Secondary - - RIVER FALLS





THEODORE HOEKSTRA—Agricultural Education—
WITTENBERG
CLIFFORD HOLMQUIST—Unclassified - RIVER FALLS
GILBERT HOLMSTOEN—Secondary - RIVER FALLS



EDWARD HORA—Unclassified - - - CHICAGO, ILL.
ALOHA HOVDE—Elementary - - - RIVER FALLS
MILTON HOVDE—Agricultural Education RIVER FALLS



LELAND HUBERT—Pre-Professional - - - DERONDA
DOROTHY HUGHES—Elementary - - - KNAPP
HERBERT HUNT—Unclassified - - - - FREDERIC



RICHARD HUNT—Unclassified - - - - FREDERIC
EMERSON HYDE—Unclassified - - LEWISTON, MINN.
DORIS ISAACSON—Rural - - - - BARRON



MAVIS ISAACSON—Unclassified - - - BALDWIN
ELDON JACOBSON—Agricultural Education - HIXTON
KARL JACOBSON—Unclassified - - RIVER FALLS

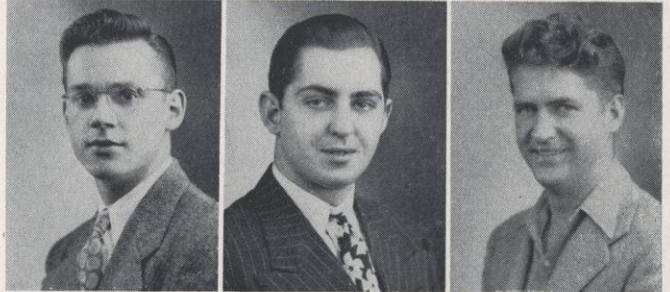


RICHARD JANN—Pre-Professional - - - RICE LAKE
CHARLES JENNINGS—Secondary - - - FREDERIC
ARNOLD JENSON—Agricultural Education—
WHITTLESEY

EUGENE JERABEK—Agricultural Education - KEWAUNEE
 ALBERT JOHNSON—Pre-Professional - WOODVILLE
 BETTY JANE JOHNSON—Secondary - CLEAR LAKE



JAMES JOHNSON—Pre-Professional - WOODVILLE
 MAROLD JOHNSON—Pre-Professional - SOMERSET
 RUSSELL JOHNSON—Secondary - - - FREDERIC



RUTH IRENE JOHNSON—Elementary - NEW RICHMOND
 SANDRA JOHNSON—Secondary - - - OSCEOLA
 WESLEY JOHNSON—Agricultural Education—
 RED WING, MINN.



WAYNE JOUBERT—Agricultural Education - TIGERTON
 NORMA JULIAN—Unclassified - - MAIDEN ROCK
 La GARDA KAPING—Rural - - - ELMWOOD

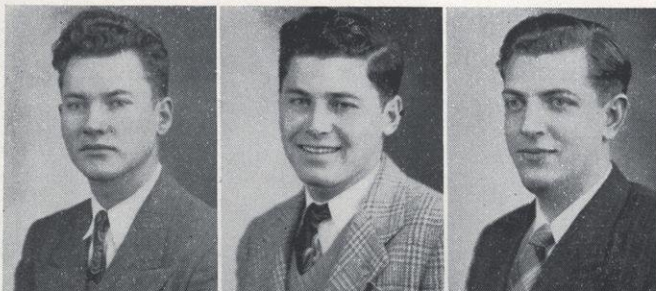


JEAN KEES—Unclassified - - - HUDSON
 ANITA KERLEY—Unclassified - - - WINEGAR
 RICHARD KERLEY—Agricultural Education—
 SPOKIE, ILL.



EDWARD KEYS—Agricultural Education -- WINTER
 AUGUST KLUG—Pre-Professional - PASADENA, CALIF.
 DONALD KNNACK—Unclassified - - - OWEN





DAVID KNOLL—Unclassified - - - NEW RICHMOND

LESLIE KNUDSON—Agricultural Education—
BROOKFIELD, ILL.

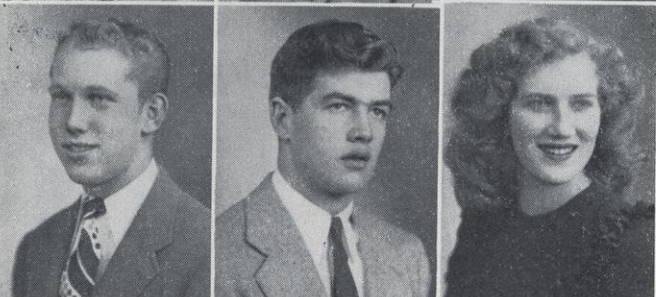
VERNE KOLBA—Secondary - - - - REEDSBURG



WAYNE LaBORDE—Secondary - - - FOND DU LAC

STANLEY LAMB—Unclassified - - - - WILSON

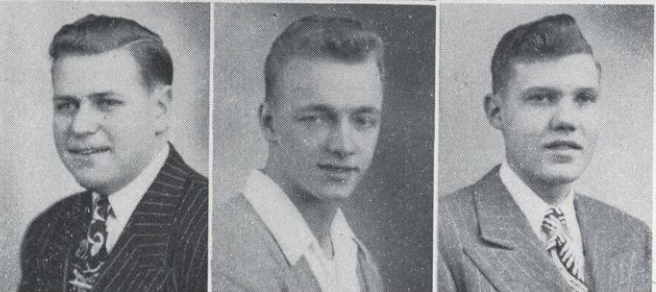
DAVID LAMSON—Pre-Professional - - - ROBERTS



WILLIAM LANDIN—Pre-Professional - CHICAGO, ILL.

WILLIAM LANDRY—Secondary - - - NEW RICHMOND

SHIRLEY LARSON—Rural - - - MAIDEN ROCK



WILLIAM LAYMAN—Unclassified - MAPLE PLAIN, MINN.

LYLE LEVENICK—Secondary - - - - MADISON

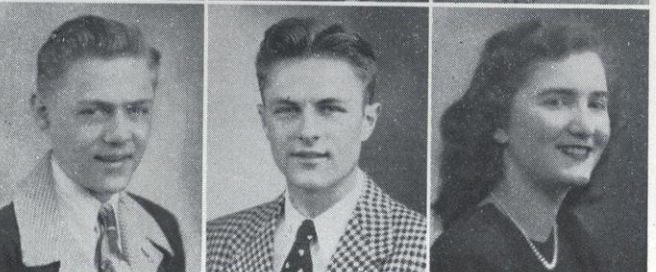
WALLACE LINDHOLM—Unclassified—
MAPLE PLAIN, MINN.



CARROLL LINDQUIST—Unclassified - RIVER FALLS

KENNETH LINDSTROM—Agricultural Education—
WELCH, MINN.

ROSEMARY LOFGREN—Pre-Professional - RIVER FALLS

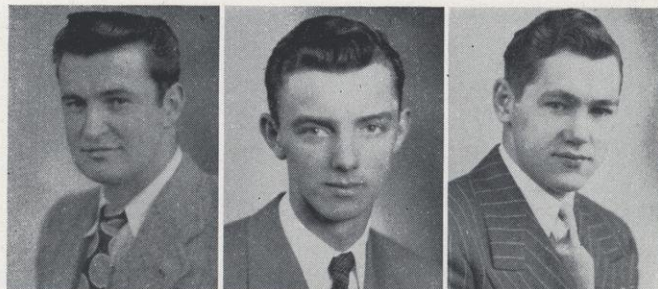


DWIGHT LONG—Secondary - - - - CLEAR LAKE

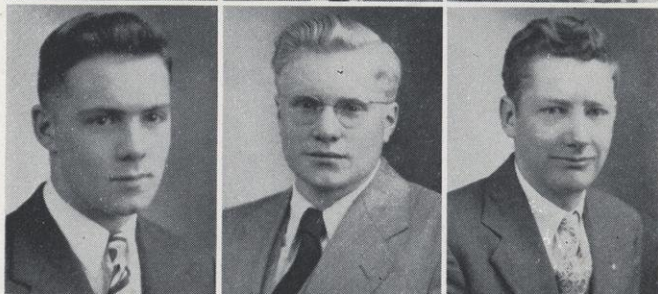
JOHN LONG—Unclassified - - - - CLEAR LAKE

GRETCHEN LEUBKE—Elementary - - - HUDSON

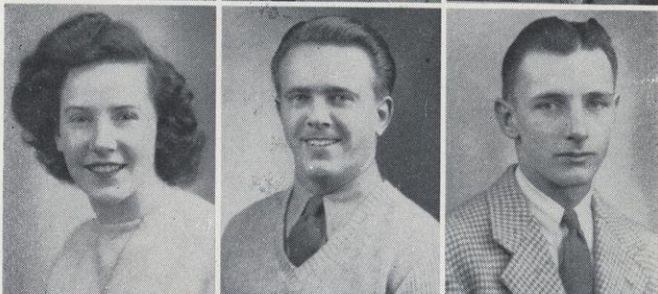
JOHN LYNCH—Unclassified - - - - CENTURIA
 GERALD McAULAY—Unclassified - - RIVER FALLS
 TERRY McCOLLOW—Pre-Professional - RIVER FALLS



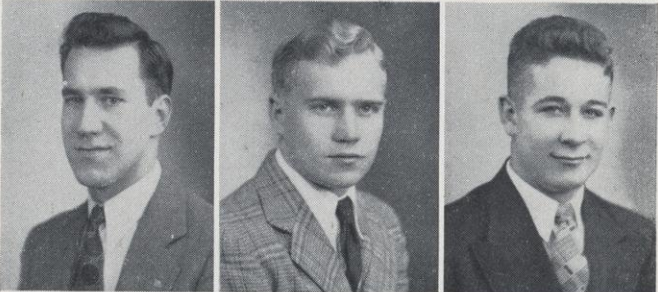
JAMES McJILTON—Unclassified - - RIVER FALLS
 STEVEN McKENZIE—Unclassified - - - ST. CROIX
 ROGER McKINNEY—Unclassified - - DEERBROOK



ADELINE MACIOSEK—Secondary - - - - CABLE
 WILBURT MAHONEY—Pre-Professional - - OWEN
 DON MATHISON—Pre-Professional - - WOODVILLE



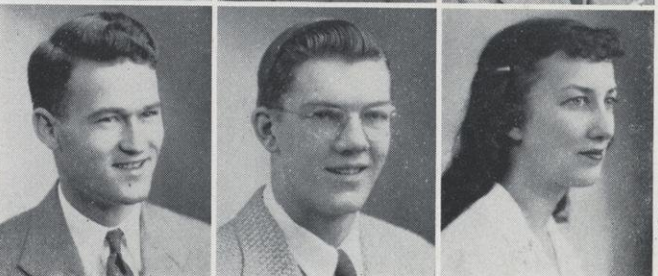
LINUS MEISCH—Pre-Professional - HASTINGS, MINN.
 RODGER MEYER—Secondary - - - - JIM FALLS
 BERNARD MILLER—Secondary - - - OSCEOLA



MILTON MILLER—Pre-Professional . - - CLAYTON
 ROBERT MITCHELL—Agricultural Education—
 SYRACUSE, IND.
 MILTON MONICKEN—Pre-Professional - RIVER FALLS



BENEDICT MONTBRIAND—Pre-Professional - HUDSON
 JAMES MOORE—Unclassified - - BALSAM LAKE
 MARGERY MOORS—Elementary - - - RICE LAKE

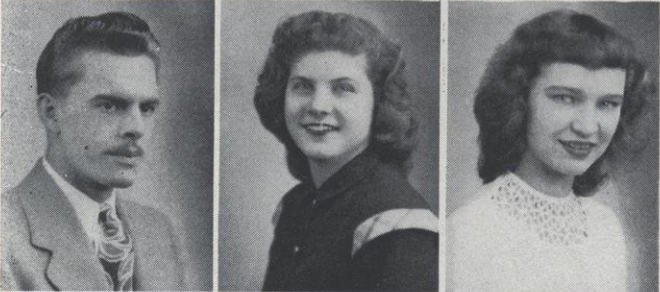




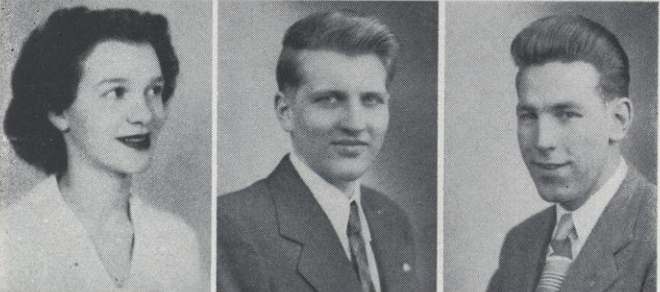
DOROTHY MOSS—Elementary - - - RIVER FALLS
CHARLES MOWBRAY—Unclassified - FOND DU LAC
DOLORES MULVANEY—Rural - - - WILSON



ARLENE MURPHY—Secondary - RED WING, MINN.
JAMES MURPHY—Pre-Professional - SPRING VALLEY
MARY JO MURRY—Secondary - - - RIVER FALLS



KENNETH NEHMER—Pre-Professional - COLUMBIA
CHARLES NELSON—Pre-Professional - RIVER FALLS
HARRIET NELSON—Elementary - STILLWATER, MINN.



MARJORIE NELSON—Unclassified - CUMBERLAND
NEWTON NELSON—Secondary - - - RIVER FALLS
JAMES NUGENT—Unclassified - - - ELLSWORTH



TOM O'CONNELL—Unclassified - - - HUDSON
RAYMOND OESTREICH—Unclassified - - WAUSAU
WAYLAND OLIGNEY—Unclassified - RIVER FALLS

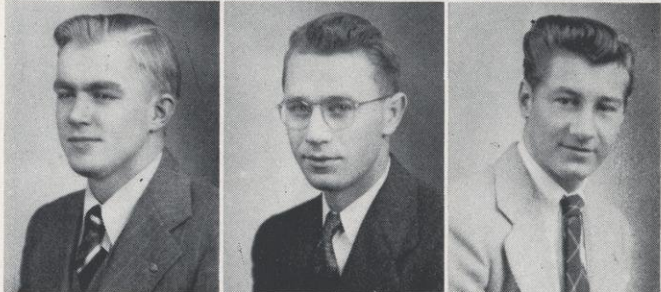


GORDON OLSON—Secondary - - CHIPPEWA FALLS
MARCEL OLSON—Pre-Professional - WOODVILLE
WILLIAM O'NEILL—Pre-Professional - WILSON

DONALD OWEN—Agricultural Education - - NELSON
 JEAN OWENS—Rural - - - - - HAMMOND
 STANLEY PAULSON—Unclassified - - - BARRON



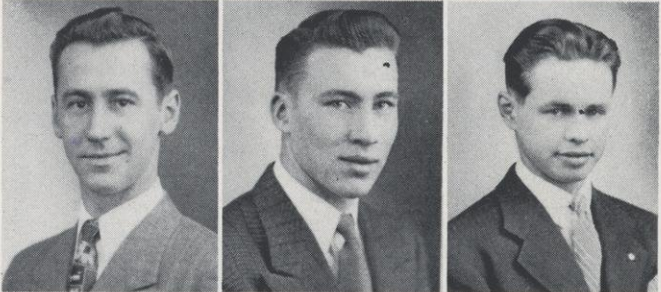
ROBERT PEARSON—Unclassified - - RIVER FALLS
 CARL PENNO—Agricultural Education - - ATHENS
 ROY PERSON—Pre-Professional - - RIVER FALLS



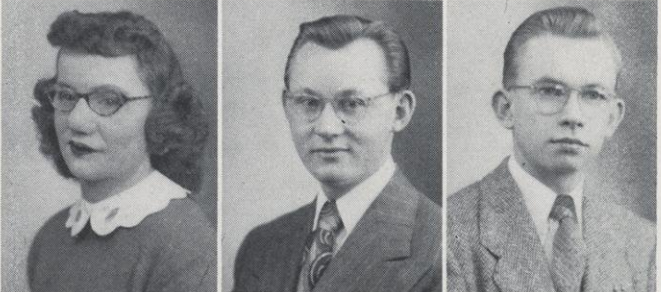
GLEE PETERS—Agricultural Education - - - PEPIN
 HARRY PETERSON—Agricultural Education - PESHTIGO
 ROBERT PITTMAN—Secondary - - - ARKANSAW



JOSEPH PITTS—Pre-Professional - - RIVER FALLS
 DONALD POLZIN—Unclassified - - - CADOTT
 DAVID POWERS—Secondary - - - MAIDEN ROCK

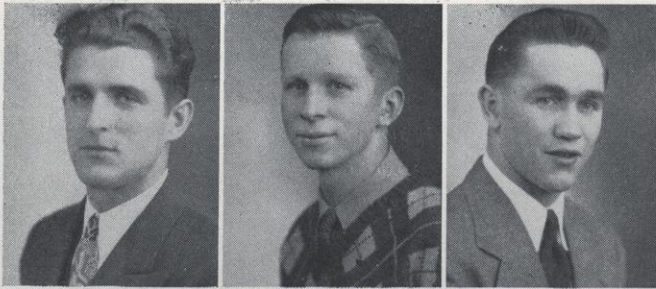


BETTY PRATT—Unclassified - - - RIVER FALLS
 GEORGE PRATT—Unclassified - - - RIVER FALLS
 ALWOOD PRESCOTT—Secondary - - - MADISON

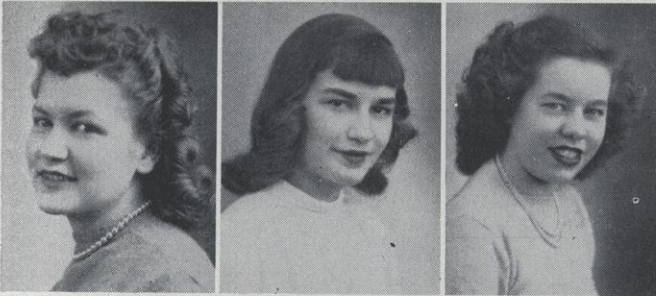


LELAND RANDALL—Pre-Professional - WOODVILLE
 ELLEN REED—Unclassified - - - RIVER FALLS
 DENNIS REITER—Agricultural Education - JIM FALLS

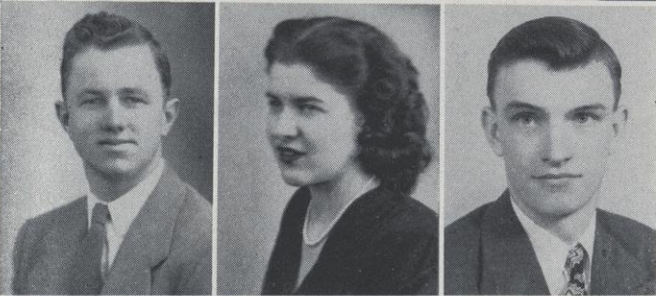




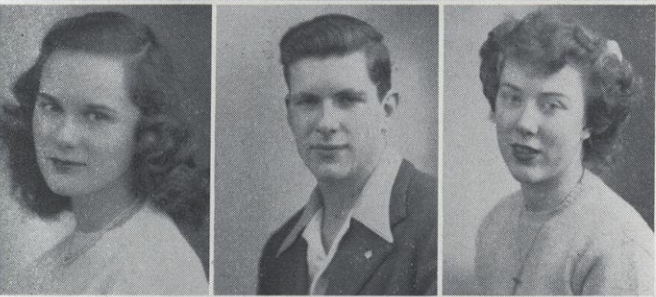
REUBEN ROEHL—Agricultural Education - NEW LONDON
 THOMAS RONDEAU—Secondary - - - - CABLE
 HENRY ROSE—Pre-Professional - - CUMBERLAND



CHARLOTTE ROUTE—Secondary - - - - AMERY
 DOROTHY RUMPF—Secondary - - - PLYMOUTH
 DOROTHY SANDSTROM—Elementary - - BARRON



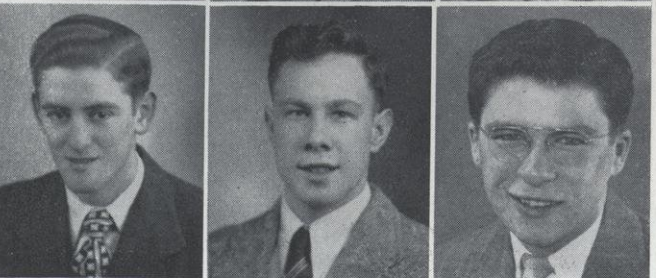
RUSSELL SATHERLUND—Agricultural Education—
 CUMBERLAND
 BERNICE SAUERESSIG—Elementary - PLUM CITY
 EUGENE SAVAGE—Agricultural Education—
 BARRONETT



JEAN SCHAER—Pre-Professional - PITTSBURGH, PA.
 CHARLES SCHILLBERG—Secondary - - OSCEOLA
 ALENE SCHORN—Secondary - - - RIVER FALLS

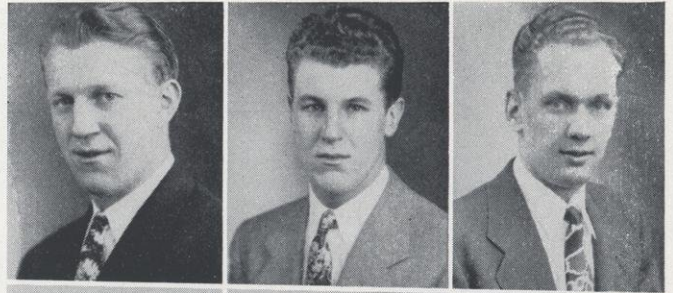


TOM SCHULLO—Unclassified - - - - HUDSON
 WESLEY SCORE—Agricultural Education - CUMBERLAND
 GORDON SEIFERT—Unclassified - - ELLSWORTH

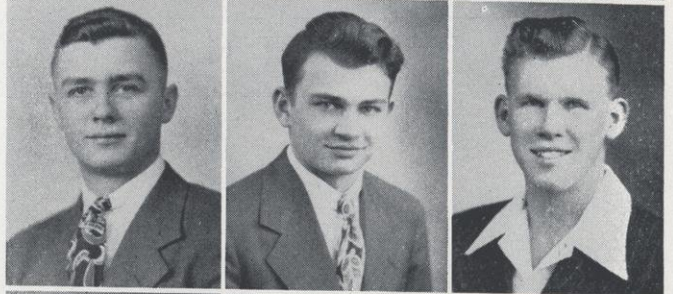


MARTON SEXTON—Agricultural Education—
 HORTONVILLE
 CRAIG SEYFORTH—Unclassified - - ELLSWORTH
 WILLIAM SHANKS—Pre-Professional - MERRIMACK

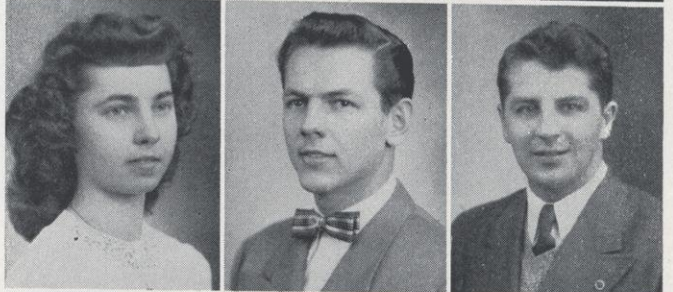
HAROLD SHAY—Unclassified - - - - SOMERSET
 VERNON SHAY—Unclassified - - - - SOMERSET
 RICHARD SIMONSON—Pre-Professional—
 MINNEAPOLIS, MINN.



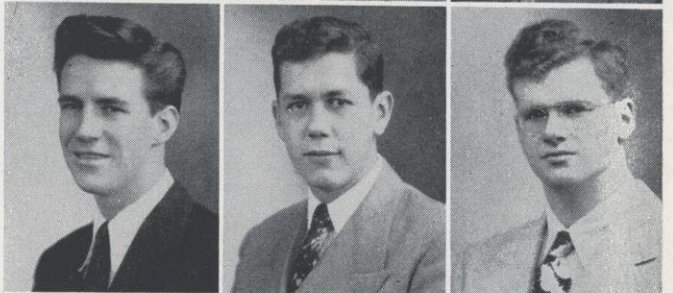
GERALD SIVERLING—Agricultural Education - BLOOMER
 ADRIAN SMIEJA—Unclassified - - INDEPENDENCE
 ALFRED SOLI—Pre-Professional - - RIVER FALLS



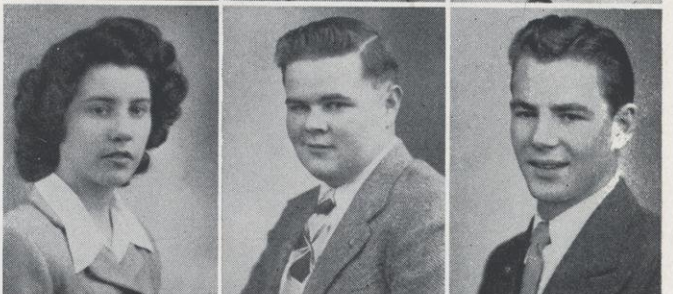
IRMA SORENSON—Rural - - - MAIDEN ROCK
 JOHN SORENSON—Secondary - - SPRING VALLEY
 WESLEY SPORS—Agricultural Education - MELROSE



ORVIL STEIN—Secondary - - BLACK RIVER FALLS
 PAUL STELSEL—Agricultural Education - BRANDON
 LUTHER STENVICK—Unclassified - - BELDENVILLE

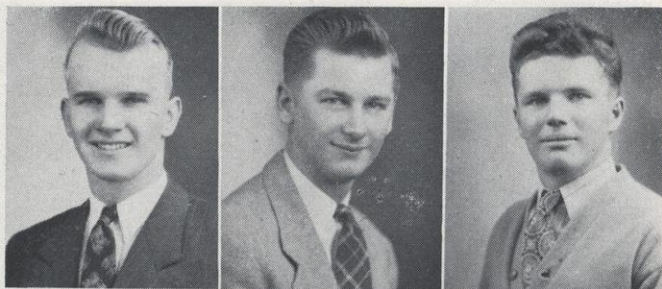


NELDA STOKES—Rural - - - - RIVER FALLS
 JAMES STOUFFER—Unclassified - - - ROBERTS
 SHERWOOD STUCKMEYER—Unclassified—
 MAPLE PLAIN, MINN.



WILLIAM SULLIVAN—Pre-Professional - FOND DU LAC
 SHIRLEY SWANSON—Secondary - - HAGER CITY
 VERDA SWENSON—Secondary - - RIVER FALLS





DONALD TECLAW—Pre-Professional - - - OWEN
 WILLIAM THIERL—Pre-Professional - - - STANLEY
 SYLVAN THOMPSON—Agricultural Education—
 LA CROSSE



MARGERY TILLUNG—Elementary - - - RICE LAKE
 CLAIR TOBIAS—Pre-Professional - - - ELLSWORTH
 GARY TRAYNOR—Unclassified - • - SPRING VALLEY



VINCENT TUBMAN—Secondary - - - HAMMOND
 MARGERY VAN—Rural - - - - - ELMWOOD
 MARILYN VANDEBERG—Unclassified - - - PRESCOTT



WILLIAM VANDERHOOF—Pre-Professional —
 MINNEAPOLIS, MINN.
 DALE VAN HEUKLOM—Unclassified - - - CLAYTON
 BEVERLY WALDEN—Rural - - - HASTINGS, MINN.

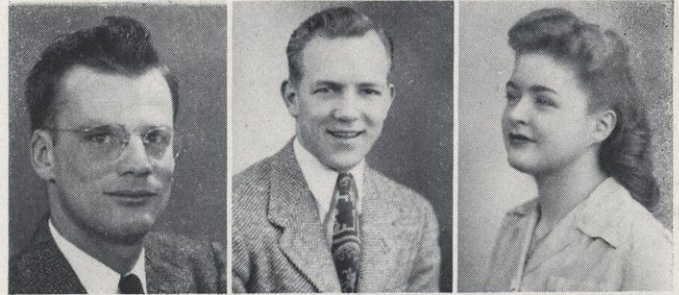


RUFUS WEIDNER—Unclassified - - - - - CASCO
 BETSY WELCH—Secondary - - - - - PRESCOTT
 CHARLES WELCH—Unclassified - - - RIVER FALLS

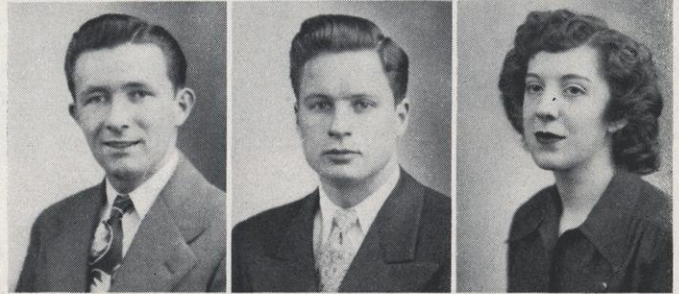


ALAN WERNDLI—Secondary - - - - - MADISON
 COLLEN WESSLEN—Unclassified - - - - - BARRON
 DUANE WILCOX—Secondary - - - - - RIVER FALLS

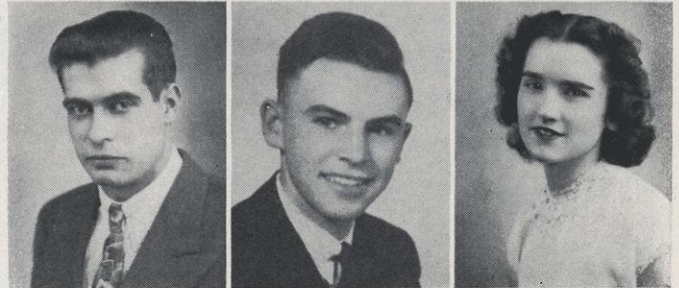
THOMAS WILKINSON—Agricultural Education - BENTON
 WILLIAM WISDOM—Secondary - - - MADISON
 NORMA WOOD—Rural - - - - - CLEAR LAKE



EARL WYMAN—Pre-Professional - - - WAUSAUKEE
 RICHARD YDE—Unclassified - - - RIVER FALLS
 BETTY LOU YOUNG—Rural - - - ELLSWORTH



LYLE ZASTROW—Secondary - - - MEDFORD
 JAMES ZEPLIN—Agricultural Education - STRATFORD
 THERESA ZIMMER—Rural - - - SPRING VALLEY



FRESHMAN OFFICERS

BENEDICT MONTBRIAND - - - - - President
 JEAN KEES - - - - - Vice-President
 MARGARET AASTERUD - - - - - Secretary
 GENE CARDINAL - - - - - Treasurer

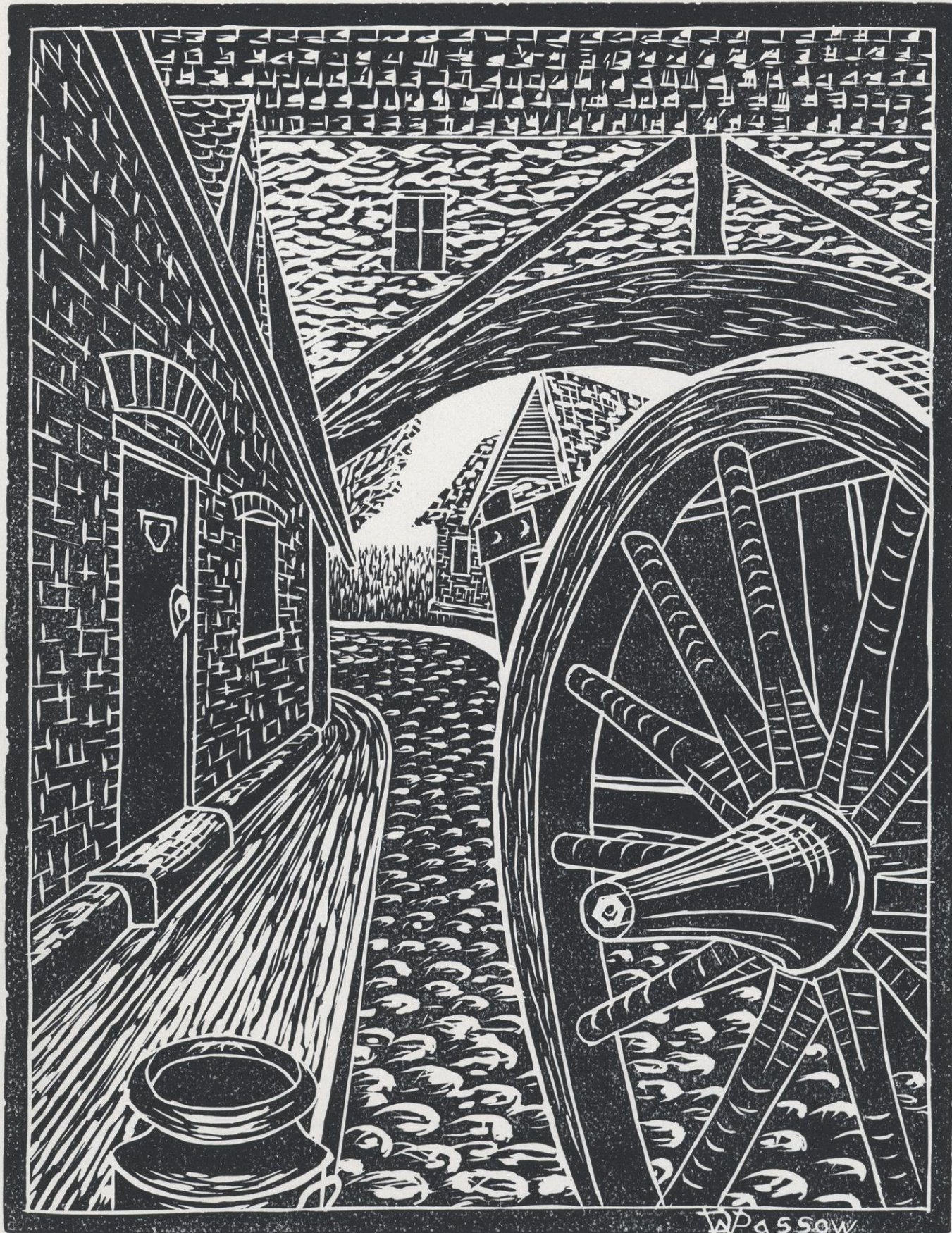
IN MEMORIAM

BETTE GRACE MYERS

LEONARD CAREY

LLOYD JOHNSON

WILLIAM KLINGELHOETS



LA CHARETTE DU LAITIER (*The Cart of the Milkman*)

During the fall of 1944 I was stationed in southern Belgium. This scene was drawn from memories and impressions I have of that country, although it is also typical of many other continental European countries. The drawing was executed as a linoleum cut in the course in Drawing and Painting. My thanks to Miss Howard for her constructive criticism and advice, without which this would not be the composition it is.

DONALD W. PASSOW, '50



Activities

← THE TRAINING SCHOOL

A thrill of accomplishment we know
When together we have done,
Some worthwhile task for school or self—
Some goal or honor won.

Lois Hatch, '47

Athletics

Music

Drama

Forensics

Publications

Special Occasions



Storzer, Ubbelohde, Meehan

R CLUB OFFICERS



Back row: Assistant Coach Oscar Sjowall; Baker, Polzin, Ruhsam, McCardle, Danielson, Grilley, Glauner, Levenick, Wernkli, Teclaw, Heichel; Line Coach Berger Kolberg. Third row: Manager Alwood Prescott; Redmond, Olson, Wisdom, Sydow, Cardinal, De Long. Sinnen, Paynter, Smith, Wilson, Hunt, Coach George Schlagenhauf. Second row: Schillberg, Savage, Skinner, Linster, Brovold, Schmit, Frokjer, Vanderhoof, Borner, Swenson, Durst, Moore. Front row: Murphy, Demulling, Clum, Lynch, Schock, Tobias, Feller, Thome, Brooke, Tveten, Froshaug, Flattum, Pearson, Wirz. Not in picture: Ubbelohde.

Football

Letter Awards Voted by the Athletic Council in Football for the 1946 Season

BYRON BROOKE
 EUGENE CARDINAL
 NATE DeLONG
 DAN DEMULLING
 ARNIE FEILER
 MARVIN FLATTUM
 HARRY FROKJER
 ERNST GLAUNER
 GORDON GRILLEY
 LYLE LEVENICK
 AL LINSTER
 JOHN LYNCH
 BUTCH McCARDLE
 GORDON OLSON

JIM REDMOND
 DAVE RUHSAM
 GORDON SCHOCK
 CHARLES SCHILLBERG
 GEORGE SCHMIT
 WAYNE SINNEN
 DICK SWENSON
 DUANE SYDOW
 CLAIR TOBIAS
 FRED UBBELOHDE
 BILL VANDERHOOF
 ALAN WERNDLI
 EUGENE WIRZ
 BILL WISDOM

BOB WILSON

1946 RECORD

| | |
|--------------------|--------------------|
| River Falls.... 6 | St. Olaf 13 |
| River Falls.... 12 | St. Cloud 6 |
| River Falls.... 20 | Stout 0 |
| River Falls.... 26 | Northland 0 |
| River Falls.... 6 | Eau Claire 19 |
| River Falls.... 7 | Superior 7 |
| River Falls.... 13 | La Crosse 9 |
| River Falls.... 6 | Hamline 6 |

Coach George K. Schlagenhauf was greeted by 106 hopefuls upon issuing his call for opening practice. This was a far cry from the days of the man power shortage. It was a struggle to find enough equipment to outfit all of the candidates, but everyone was able to make his bid for the squad.

The first game of the season came after only two weeks of practice, and much experimenting had to be done, as most of the men were new to the coaching staff. Despite this handicap, the Falcons led a highly favored St. Olaf eleven, 6-0, at the half before bowing to the Oles, 13-6. Schmit made the River Falls touchdown.

The first home game found the Falcons meeting a heavy St. Cloud eleven. Schock and Cardinal scored in the second quarter for River Falls to pave the way to a 12-6 victory.

The following week River Falls defeated Stout, 20-0, before the largest home crowd in history. This time Schmidt teamed with Schock and Cardinal in the Falcons scoring parade.

Playing their third consecutive home game, River Falls rolled over Northland College of Ashland, 26-0. The Falcons passing game was at its best in the first half, as River Falls scored all 26 of their points. The reserves played the entire second half. The Falcons played the Blue Golds of Eau Claire for the Zornsmen homecoming and were handed their first and only conference loss by 19-6. Eau Claire scored twice early in the first period, and from then on the Falcons dominated the play but were unable to hit pay dirt more than once.

Superior was the Falcons next foe in a game that proved to be a thriller. For three periods they battled to a scoreless tie before River Falls was able to score on a pass from Tobias to Feiler. Wirz converted the extra point. Superior roared back after the kick-off and also scored on a pass and converted. River Falls marched to the Superior 13-yard-line, but time was running out, so a field goal was attempted but blocked. River Falls 7, Superior 7.

Homecoming found the Falcons defeating a stubborn La Crosse team, 13-9. River Falls scored both times in the first period on runs by Schock and Tobias. A bad pass from center was recovered by Tobias and was tackled in the end zone to give La Crosse their first two points. Late in the second quarter the Indians started a drive to the Falcons' goal and scored on the last play of the first half. The second half was a punting duel with neither team able to score. The game was marked by the attendance of a large number of veteran graduates.

Hamline furnished the opposition for the season's finale in a game played in the mud. It was a see-saw affair, with neither team able to get their scoring machines rolling on the wet turf. The Falcons scored first, but the lead was short lived as the Pipers came right back to score. Both teams failed to convert the extra point, and the game ended, 6-6.

River Falls finished a half game behind the championship Superior eleven in the conference standings. Only two members were lost by graduation, so an even better season is expected next fall.



1-2-3, Hike- The Falcons' "T" set as River Falls defeated La Crosse, 13-9, in homecoming clash.



Back row: Gavic, Oleson, Larum, Moore, Cardinal, Wickman, Coach George Schlagenhauf.
 Middle row: Brooke, Young, Hunt, Healy, Vinc, Durst, Tobias, Manager Alwood Prescott.
 Front row: Most, Benson, Deiss, Henneman, DeLong, Gibbs, Thompson.

Basketball

Letter Awards Voted by the Athletic Council in Basketball for the 1946-1947 Season

MAJOR LETTERS

NEWMEN BENSON
 BYRON BROOKE
 EUGENE CARDINAL

EUGENE DEISS
 NATE DE LONG
 DAN DEMULLING

HARRY GIBBS
 JERRY HEALY
 JACK HENNEMAN

CHARLES MOST
 CHARLES THOMPSON

MINOR LETTER

Alwood Prescott, Student Manager

1946-1947 RECORD

| | | | | | | | |
|-------------------|----|-------------------|----|------------------------|-----|------------------|----|
| River Falls | 69 | Macalester | 51 | River Falls | 51 | Superior | 47 |
| River Falls | 64 | St. Olaf | 46 | River Falls | 57 | Northland | 46 |
| River Falls | 62 | Winona | 51 | River Falls | 46 | Stout | 63 |
| River Falls | 56 | Stout | 37 | River Falls | 50 | St. Cloud | 37 |
| River Falls | 43 | Macalester | 39 | River Falls | 63 | Superior | 50 |
| River Falls | 56 | Eau Claire | 38 | River Falls | 64 | Eau Claire | 59 |
| River Falls | 37 | St. Thomas | 38 | River Falls | 89 | La Crosse | 60 |
| River Falls | 45 | Minnesota B | 47 | River Falls | 71 | Northland | 51 |
| River Falls | 60 | St. Thomas | 48 | River Falls | 89 | St. Cloud | 56 |
| River Falls | 66 | Winona | 71 | River Falls | 53 | La Crosse | 54 |
| River Falls | 45 | St. Olaf | 59 | River Falls | 67 | Oshkosh | 55 |
| | | River Falls | 80 | Marshall College | 113 | | |

Player Named on the All-Conference Team—
 NATE DE LONG

Honorable Mention—
 NEWMEN BENSON
 EUGENE DEISS
 HARRY GIBBS

INDIVIDUAL SCORING DATA FOR THE SEASON

| Player | Games Played | F. G. | F. T. | T.P. | Average |
|-----------------|--------------|-------|-------|------|---------|
| DE LONG | 22 | 168 | 127 | 463 | 21.04 |
| DEISS | 23 | 80 | 92 | 252 | 10.9 |
| BENSON | 23 | 95 | 47 | 237 | 10.3 |
| GIBBS | 23 | 78 | 30 | 186 | 8.08 |
| MOST | 21 | 21 | 17 | 59 | 2.8 |
| HEALY | 18 | 18 | 10 | 46 | 2.55 |
| HENNEMAN | 23 | 18 | 12 | 48 | 2.08 |
| DEMULLING | 11 | 6 | 9 | 21 | 1.9 |
| THOMPSON | 18 | 7 | 5 | 19 | 1.06 |
| BROOKE | 10 | 2 | 2 | 6 | 0.60 |
| CARDINAL | 6 | 4 | 1 | 9 | 1.5 |
| YOUNG | 2 | 2 | 1 | 5 | 2.5 |
| OLESON | 2 | 2 | 0 | 4 | 2.0 |
| GAVIC | 2 | 2 | 0 | 4 | 2.0 |

Total Points—River Falls1384
 Total Points—Opponents1207

Average per Game.....60.17
 Average per Game.....52.48

RIVER FALLS 69 — MACALESTER 51

The River Falls Falcons got their season off to a flying start by walloping Macalester, 69-51. The visiting Scots were never in the game as the Falcons raced to a 35-15 halftime lead. "Boots" Deiss poured in 27 points in a scintillating performance, while big Nate De Long added 13. Maynard Johnson kept the game from being a complete rout, as he scored 21 points for Macalester. Coach Schlagenhaut used fourteen players in the game and twelve of them broke into the scoring column.

RIVER FALLS 64 — ST. OLAF 46

Amazing accuracy at the free-throw line paid off for the Falcons, as they trounced St. Olaf, 64-46, at River Falls. The Falcons sank 24 of 30 free throw attempts and were never seriously threatened, leading, 33-24, at halftime. Eugene Deiss continued his hot shooting, as he racked up 20 points, ten coming on free throws. Nate De Long dropped in 22 points from the pivot spot for high point honors.

RIVER FALLS 62 — WINONA 51

A strong second-half rally enabled River Falls to defeat Winona, 62-51. The visiting Falcons trailed, 28-26, at halftime, but "Big Nate" De Long tossed in 17 points in the second half and the Falls cagers pulled away for an 11 point triumph. De Long had 24 points for the evening's chores, while Kannel contributed 16 to Winona's cause. Benson, Deiss, and Gibbs each hit for eight points.

RIVER FALLS 56 — STOUT 37

A sensational rally, after Stout Institute had rolled up a 19-4 lead in the opening minutes, gave the Falcons their fourth straight win of the season. It was the opening conference game and was a comparatively easy triumph after the first half, which saw River Falls ahead, 23-21. Gibbs paced the well balanced Falls offense with 16 markers. De Long was held to but eight. Peterson chipped in ten to lead the Blue Devils, while Deiss added 11 to the Falcons' total.

RIVER FALLS 43 — MACALESTER 39

The Falcons scored their second victory in as many days and their fifth straight of the season by coming from a 27-19 halftime deficit to Macalester at St. Paul. While De Long scored 15 to lead River Falls, it was some long range sharpshooting by flashy Newmen Benson that put the Falcons into the lead late in the game and enabled them to eke out a victory. Benson scored 13 altogether; Johnson paced the Scots with 21 points.

RIVER FALLS 56 — EAU CLAIRE 38

Another second-half flurry gave River Falls their sixth straight win of the season and their second conference win. The game was close throughout the first half, but the Falcons hit on all five the last period and pulled away for an easy win. De Long was in top form as he tallied 22 points. The smooth working forward duo of Benson and Deiss hit for 13 each. Henneman and Gibbs turned in a sparkling defensive performance by stopping Helixon and Davies, Eau Claire's hot-shots, with just four points apiece.

RIVER FALLS 37 — ST. THOMAS 38

St. Thomas, playing on their own court, snapped the Falcons' winning streak, handing them their first defeat of the season. River Falls led, 20-15, at halftime, but could not withstand a late drive of the Tommies, led by Furey, Shonka, and Sokol. Despite the loss, giant Nate De Long turned in a brilliant offensive and defensive game as he potted 19 points to lead both teams. Deiss was hampered by a bad foot and saw little action, thus crippling the Falls attack. The Falcons were, with the exception of "Big Nate," largely ineffective.

RIVER FALLS 45 — MINNESOTA B 47

In the first game after the Christmas vacation a rugged Minnesota B team edged the Falcons on their own court. River Falls led, 28-24, at halftime, and the game was tied five times in the second half before the "Little Gophers" won out. River Falls lost the game at the free-throw line, missing over 20 free throws. De Long again paced the attack with 14 points, while Benson and Deiss had 12 and ten respectively. McWaters, Carroll, and Holewa led the Minnesota B quint.

RIVER FALLS 60 — ST. THOMAS 48

Free throws were the deciding factor, as River Falls avenged an earlier defeat by bowling over St. Thomas, 60-48. Both teams hit for 17 field goals, but the Falcons cashed 26 free throws to the Tommies' 14. Benson and Deiss scored 14 markers apiece to tie Mauer of St. Thomas for high point honors in a fast but rough game. The win proved costly to the Falcons, as De Long turned his ankle and was forced to retire from the contest.

RIVER FALLS 66 — WINONA 71

River Falls continued in their mid-season slump as they lost to a torrid shooting Winona team, 71-66, in an overtime thriller. De Long saw limited action because of an injured ankle, and his disability hurt the Falls team, although reserve center, Jerry Healy, poured in 19 points to lead the Falcons. The score was 61-all at the end of the regular game, after River Falls had held on to a small lead throughout most of the tilt until the final minutes. Sour took high point honors with 24 tallies for Winona and led the victorious overtime drive.

RIVER FALLS 45 — ST. OLAF 59

A red-hot St. Olaf team trounced the Falcons on the Oles' court, as the Red and White Falls cagers gave their poorest performance of the season. De Long saw action, although still hampered by an ankle injury. Stromme led the Lions to a 27-15 lead at halftime, and the Falcons never recovered. Harry Gibbs and "Boots" Deiss with 12 and 11 points, respectively, paced the ineffective River Falls offensive.



Coach Schlagenhauf mapping strategy for starting five.

Coach Schlagenhauf; Forward Newmen Benson, Guard Harry Gibbs, Center Nate De Long, Guard Jack Henneman, Forward Eugene Deiss.

RIVER FALLS 51 — SUPERIOR 47

In a close well-played game the Falcons notched their third straight conference win and broke out of their slump by defeating Superior, 51-47, on their court. It was 28-27 in the Falls favor at half. Newmen Benson pulled the Redmen through to victory by throwing in 17 points, and "Big Nate" added 12. "Moose," Rehnstrand and Moselle had ten apiece for the Yellowjackets.

RIVER FALLS 57 — NORTHLAND 46

After a close game at Superior the night before, River Falls had little trouble in disposing of Northland College of Ashland, 57-46. De Long was back in form and captured high point laurels with 20 points. Aiding Nate in point production was Benson with 14 tallies. Reserves played much of the game as Northland was incapable of stopping the strong outfit from River Falls.

RIVER FALLS 46 — STOUT 63

A visiting Falcon club was subjugated to its worst defeat of the season and also its first conference loss, as the Blue Devils of Stout outplayed and outshot the Redmen. The Falcons, to be sure, were crippled for this game, as sturdy Jack Henneman was out with an ankle injury, and De Long had an injured arm. Despite this, Nate scored 16 points to lead his mates. Hesselmen, Grunstad, and Peterson again were the Stout sparks, as they had been all season.

RIVER FALLS 50 — ST. CLOUD 37

Recovering from their defeat at the hands of Stout the night before, River Falls defeated their hosts, St. Cloud Teachers, 50-37. Leading only 21-18 at half, De Long went wild from his center slot to score 11 points in the last ten minutes of the game. He totaled 26 markers and turned in a sparkling all-around game. Rajcich with eight led the St. Cloud team which found it impossible to cope with giant De Long.

RIVER FALLS 63—SUPERIOR 50

Returning to their home court after an extended road trip, River Falls scored their second win of the season over the Yellowjackets of Superior, 63-50. The Falcons were in top form and breezed to a 33-20 margin at the half. De Long continued his spectacular scoring pace as he tossed in 25 points. Guard Harry Gibbs, the Madison sharpshooter, had 16 points for the game, most of them coming on long one hand push shots. Benson, Deiss, and Henneman all chipped in to make it an easy win. Moselle led the Yellowjackets with 17, and Dodge was close behind with 14 scores.

RIVER FALLS 64—EAU CLAIRE 59

"Booty" Deiss and Ace De Long combined to spearhead a sensational Falcon rally which overtook a fast flying Eau Claire quintet and put the Falls team a step closer to the conference championship. The Blue-Golds literally burned the nets and raced to a 36-22 lead at halftime and still had that margin with ten minutes of play left. Then Deiss got hot and, with De Long and Benson chipping in, the Falcons poured in 16 points in four minutes and forged into a lead they never lost. De Long hit for 26 and Deiss swished in 18, all of them in the last half rally. Babington, Helixen, and Davies sparked the Zornmen of Eau Claire in the fast, furious, hard fought game.

RIVER FALLS 89 — LA CROSSE 60

The River Falls steam roller clinched the conference championship by crushing La Crosse, 89-60. Putting on their greatest offensive display of the season, the Falcons hit for 52 per cent of their shots and La Crosse was never in the game. Deiss had 20 points, Gibbs 17 and De Long 12. Coach Schlagenhauf cleared the bench, but even then the torrid Falls team continued the rout. Twelve men broke into the scoring column; Schwananberg and Kalosh paced the outclassed La Crosse cagers, who concentrated on stopping "Big Nate," with the result that Gibbs, Deiss, Benson and company went wild and burned the nets with long and short swishers.

RIVER FALLS 71 — NORTHLAND 51

An outclassed but scrappy Northland team was no match for the blazing River Falls five. The starting lineup engineered a 48-21 lead at halftime, and reserves played all but the last four minutes of the second half. Gibbs rippled the nets for 19 points, while De Long scored 16. Deiss added 11 and Benson gave his usual brilliant display of floor work and passing. Nyland kept the score reasonably close by totaling 22 points for Northland.

RIVER FALLS 89 — ST. CLOUD 56

River Falls closed their home season in spectacular fashion, as Nate De Long wrote basketball history by scoring the stupendous total of 51 points in a game which saw the Falcons pulverize St. Cloud 89-56. De Long scored 18 points in the first half in which River Falls worked to a 31-25 lead. Then the blond pivot ace broke loose, scoring on rebounds, push shots from the corner or free throw lane, short layups, and all shots imaginable, to wind up with the unbelievable total of 51 points. De Long's mates fed him beautifully and Gibbs, Deiss, and Benson had 21, 10, and 10 points, respectively, in putting on a brilliant offensive display. Guard Henry Olson led St. Cloud with 22 points, a very respectable total but paltry compared to De Long's 51 markers.

RIVER FALLS 53 — LA CROSSE 54

The Falcons closed their regular season by dropping a one point decision to a revengeful La Crosse club which had absorbed an 89-60 defeat on the Falls court. This loss gave the champion River Falls club a 6 won, 2 lost record in conference play. For awhile it looked as if the Falcons would have an easy time of it, as they raced to a 20-6 lead, only to have the Indians strike back and gain a 35-34 halftime lead. Bodah, the La Crosse ace, was in excellent form and dropped in 23 points to lead both teams. Newmen Benson threatened to pull the game out of the fire as he scored 20 points, tallying them on long push shots. De Long scored 16, despite the fact that La Crosse had two and three men guarding him.

RIVER FALLS 67 — OSHKOSH 55

In a game played in the Eau Claire High School gymnasium, the River Falls Falcons won the State Teachers College championship and also the right to compete in the NAIB tournament in Kansas City by defeating the Southern Division champions, Oshkosh, 67-55. Oshkosh jumped off to an early lead, as they scorched the nets with sensational long shots. Then De Long and Company swung into action, closing the gap, finally tying the score at 24-all, and then with "Big Nate" rolling them in, blazed to a 37-26 halftime lead. That was the ball game, as in the second period De Long scored at will, and Benson put on a shooting display of his own. Replacements finished out the game, which was a great one all the way. De Long scored 35 points for a superlative performance, while Benson had 16. Gibbs, Deiss and Henneman played brilliant defensive games. Ritchie with 17 and Luker with 14 were the Oshkosh offensive leaders.

RIVER FALLS 80 — MARSHALL COLLEGE 113

NAIB Tournament at Kansas City

In the most spectacular game of the entire NAIB tournament, the Thundering Herd, Marshall College of Huntington, West Virginia, eliminated the Falcons of River Falls in the first round of play by the amazing score of 113-80. The fast breaking Marshall quint presented a brilliant ball handling team which swished in shots from any spot on the floor, and the Falcons were unable to cope with the Thundering Herd. However, River Falls showed an offense all its own in the person of Nate De Long, who shattered the NAIB individual scoring mark by totaling 56 points to eclipse the former mark of 38 points. The giant Falcon center was unstoppable, as he stuffed 22 baskets through the hoop and added 12 free throws in making his sensational record. Newmen Benson was injured early in the game, and his loss seriously impaired the Falcons' chances. For his brilliant performance De Long was named to the second Little All-America team, although he played in only one tournament game. River Falls fans can well be proud of Coach George Schlagenhauf and his Falcon squad. They lost to Marshall, the eventual champions, but in doing so showed an undaunted offense in the person of De Long. The Falcons did not have an opportunity to prepare a defense for the champions from West Virginia, and as a result were swept off the court, as Marshall connected on better than 50 per cent of their shots.

The 1946-47 basketball season saw Coach George Schlagenhauf's Falcon team win the first Teachers' College basketball championship for River Falls since 1935-36. Besides winning the northern division championship, River Falls won the playoff against the southern division champs, Oshkosh, to win the Wisconsin Teachers College title. Their win against Oshkosh earned them a place in the NAIB tournament at Kansas City, and thus they became the first River Falls team to compete for national honors. The Falcons lost to Marshall College of Huntington, West Virginia, in the first round; but not before the two teams had smashed several records. Marshall went to win the NAIB tournament. The most outstanding record was Nate De Long's total of 56 points which beat the previous record of 38 set by Fogo of Pepperdine College of California. De Long tallied 40 points in the second half for another record. For this performance De Long was placed on the second Little All-American team, despite the fact he played in only one game.

The 1946-47 Falcon team was the highest scoring aggregation in River Falls history, as they averaged 60.17 points per game against their opponents 52.48 points. Falcon fans were treated to several brilliant exhibitions by the sharp-shooting De Long and company, their 89 point splurge against LaCrosse and St. Cloud being the high lights of the home games.

Thumbnail Sketches

Newmen Benson—the only non-GI on the team, this five-foot eleven-inch freshman from Drummond came directly out of high school to earn a first team berth with the Falcons. A dazzling, brilliant ball-handler as well as a spectacular one-hand push shot artist, “Benny” provided the spark for the team. Very consistent, Benson could go at top speed throughout the entire game. A team player all the way, Benson was given honorable mention on the all-conference team.

Eugene Deiss—“Booty” is a sophomore and played his second season on the Falcon varsity this past year. A left-hander, Deiss who is a local River Falls boy, thrilled the fans with his side shots and by his ability to drive underneath the basket and hook them in. “Booty” averaged better than ten points a game and in several games went over 20. He also was given all-conference honorable mention.

Harry Gibbs—This freshman from Madison showed River Falls fans some of the best guard play they have seen in years. A cool, steady performer, Gibbs was uncanny with his long left-hand push shots and was, moreover, an outstanding defensive player who could be depended on to out-score his opponent. Along with Benson and Deiss, Harry was given honorable mention in the conference.

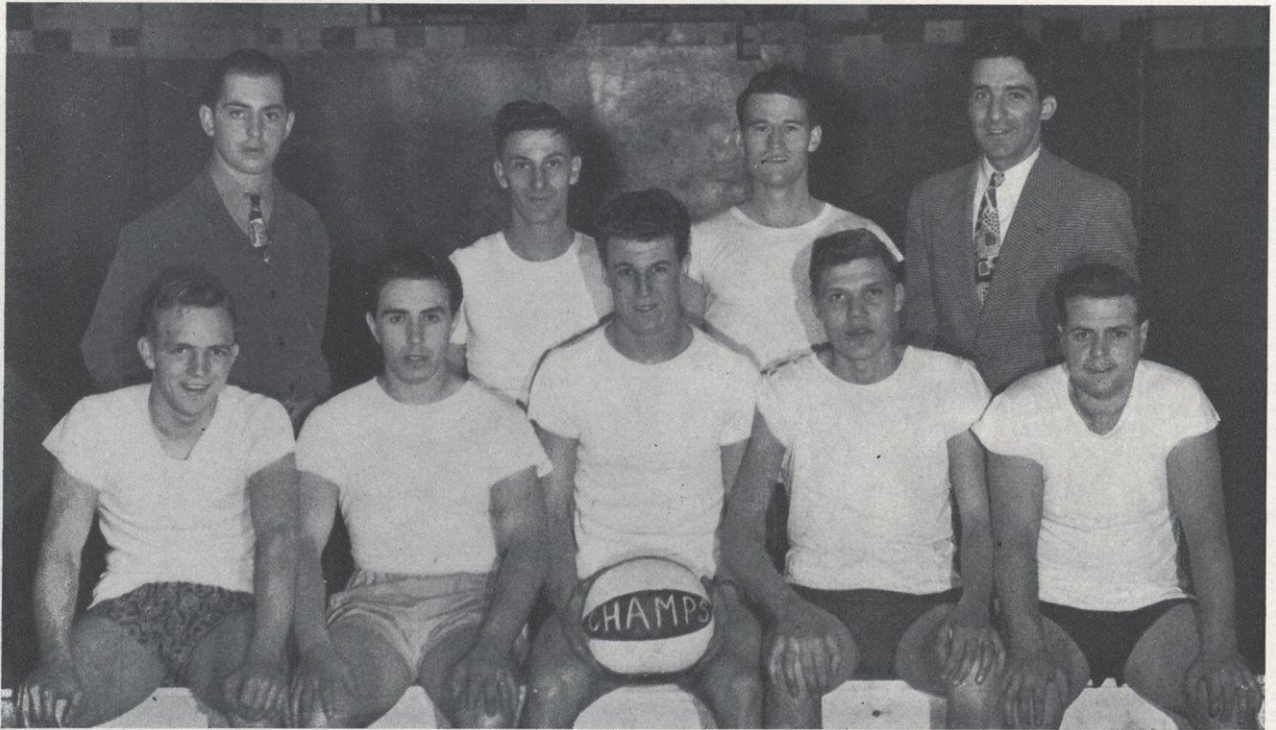
Jack Henneman — “Big Jack,” another River Falls lad, left the scoring to his four team-mates and concentrated on setting up scoring opportunities for them. This sophomore was a rugged defensive player whose rebound work and all-around floor play was outstanding. Never taking many shots, Jack came through in the clutches for several timely baskets.

Nate De Long — The “Pride of Chippewa Falls,” this six-foot six-inch center won national honors by his brilliant play. Averaging over 21 points a game, “Big Nate” was the backbone of the champion Falcons, not only for his scoring but for his rebound work and defensive play. De Long won all-conference honors and second Little All-American laurels as well by virtue of his record-breaking performance at Kansas City. His 51 points against St. Cloud and 35 tallies against Oshkosh were outstanding achievements. Opposing teams showed their respect for De Long by assigning two or three men to guard him, but “Big Nate” just kept pouring them in. Not one to hog the spotlight, the friendly De Long was a great team player and above all a true sportsman.

Reserves such as Charlie Most, “Bud” Thompson, lanky Jerry Healy, little Gene Cardinal, Dan Demulling, and the veteran By Brooke filled in for the starting five and came through with good performances, thus easing the burden of the first five. Most could always be depended on for a couple of buckets when they were needed, and Healy scored 19 points against Winona when De Long was injured. All in all, a truly great season for the Falcons, and a tribute to Coach Schlagenhauf’s coaching, as in his second year as River Falls head mentor he leads the Red and White to a state championship.



Eugene “Boots” Deiss, star Falcon forward, tips in a goal as River Falls defeats Oshkosh for state championship. De Long (19) and Benson (10) wait for rebound.



Back row: Manager M. Johnson, Schullo, Montbriand, Coach DiUlio
 Front row: Wisdom, Parnell, V. Shay, Lindholm, Layman. Not in picture: H. Shay.

S Club-Intramural Tournament Champions

Intramural Basketball

Final 1946-47 Intramural Basketball Standings Regular League Season

| Team | Captain | Won | Lost | Pct. |
|--------------------|------------------|-----|------|-------|
| Fourth Street Gang | EDWARD MC COLLOW | 10 | 0 | 1.000 |
| S Club | VERN SHAY | 8 | 1 | .888 |
| Seldom Inn | ALLAN LINSTER | 8 | 1 | .888 |
| Forgotten Five | BILL LANDRY | 7 | 2 | .777 |
| George's Trainers | Robert MC CARDLE | 7 | 2 | .777 |
| Six Old Men | TERRY DOONAN | 1 | 2 | .777 |
| 5 Aces | ALLAN WERNDLI | 7 | 3 | .700 |
| House of Jerney | DOYLE BEYL | 6 | 4 | .600 |
| Northerners | DEAN FLYGSTAD | 6 | 4 | .600 |
| ADD's | JENS FOSSUM | 4 | 5 | .444 |
| House of Nelson | DAVID RUHSAM | 4 | 5 | .444 |
| Raiders | DENNIS KINNEY | 3 | 6 | .333 |
| Stork Club | CARL KARNES | 2 | 7 | .222 |
| Rapid Rabbits | EUGENE WIRZ | 2 | 7 | .222 |
| Savage Five | LESTER BARTELT | 2 | 7 | .222 |
| House of Collins | MARK STONE | 1 | 8 | .111 |
| No Stars | DON WEBSTER | 1 | 8 | .111 |
| Haddow Hellcats | MARVIN PASSOW | 1 | 8 | .111 |

The Fourth Street Gang, coached by Dean Stratton and captained by Ed McColow, won the intramural basketball league championship with a record of ten wins and no defeats. Outstanding teams who suffered only one or two defeats in league competition were the S Club, Seldom Inn, the Five Aces and George's Trainers. In the annual intramural elimination tourney, the powerful S Club upset the league champions by a 38-28 score to win the tournament. Rangy Vern Shay and Wallace Lindholm led the S Club in their title game with the



Back row: Gaustad, Berggren, Giere, Pitts, Capt. E. McCollow.
Front row: Hocking, T. McCollow, Coach Stratton, Hanvelt, Crist. Not in picture: Wilcox.

Fourth Street Gang-Regular Season Champions

Fourth Streeters. In the Semi-finals the S Club tripped the Five Aces, while the Fourth Streeters edged the Forgotten Five to reach the tourney finals.

O. W. Sjowall ably directed the intramural league in which eighteen squads competed. A total of 90 games was played during regular league play, and a record high of two hundred men participated in the intramural league. All league and tournament games were officiated by members of the college basketball coaching class.

As a climax to the season an intramural all-star team was chosen by votes cast by the intramural league players. The all-star aggregation gave a good account of themselves as they defeated the River Falls Rockets, a strong local independent team, by a 44-38 score. The players chosen for the all-star team were Terry Doonan, Vern Shay, Wallace Lindholm, Bob Wilson, Bob Olson, Roy Durst, Delbert Glass, Bill Vanderhoof, Joe Hunt, and John Storzer. Coach "Butch" McCardle directed the All-Stars as they proved their superiority over the "Rockets."



Standing: Olson, Ruhsam, Horn.
Sitting: Franko, Fellows, Wehrouch, Grenshick.

First Round Bowling Champs—House of Jerney

Bowling

One of the most successful features of the intramural program was the bowling league. Organized after the Christmas holidays, the league, composed of six teams, bowled every Friday evening and Saturday morning.

| Teams | Captains | Teams | Captains |
|-----------------------|------------------|-----------------------|-----------------|
| BARRACKS - - - - | CARL KARNS | HOUSE OF HADDOW - - - | RONALD STUBER |
| KEGLERS - - - - | EMERSON HYDE | FIVE BLOWS - - - - | GERALD HEALY |
| HOUSE OF JERNEY - - - | GEORGE FRENCHICK | LUCKY STRIKES - - - - | RUEBEN CHARTRAW |

The league season was divided into two rounds, with each team bowling a three-game series with every team in the league. Money prizes were awarded for the team winning the most games each half, individual high series, and individual high single game. The first round champions were the House of Jerney, captained by George Frenchick. Highest individual series was a 601 pin total bowled by Emerson Hyde, who also bowled the high single game of the first round with a 265 game.

HIGH SEASON AVERAGES

A league rule in regard to season averages is that a bowler must bowl in at least 18 games to be eligible for the prize offered.

| | Games | Average | | Games | Average |
|--------------------------|-------|---------|------------------------|-------|---------|
| EMERSON HYDE - - - - | 27 | 171 | CHARLES TWETON - - - - | 27 | 156 |
| ERNEST WALLIN - - - - | 9 | 163 | ELDON JACOBSON - - - - | 27 | 153 |
| GEORGE FRENCHICK - - - - | 24 | 160 | FLOYD DOERING - - - - | 27 | 152 |
| KENNETH NEHMER - - - - | 21 | 159 | P. HANVELT - - - - | 27 | 151 |
| AL FRANKO - - - - | 27 | 157 | | | |

INTRAMURAL BOWLING SECOND ROUND

| Team | Won | Lost | Team | Won | Lost |
|------------------|-----|------|-----------------------|-----|------|
| KEGLERS - - - - | 12 | 3 | LUCKY STRIKES - - - - | 6 | 9 |
| BARRACKS - - - - | 10 | 5 | FIVE BLOWS - - - - | 4 | 11 |
| JERNEY - - - - | 9 | 6 | HADDOWS - - - - | 4 | 11 |

| HIGH INDIVIDUAL SERIES Second Round | HIGH INDIVIDUAL GAME Second Round | HIGH INDIVIDUAL AVERAGES Both Rounds |
|--|--------------------------------------|---|
| EMERSON HYDE - - - - 574 | P. HANVELT - - - 212 | HYDE - - - - 170 |
| C. DOERING - - - - 544 | BUD ERDMANN - - - 212 | FRENCHICK - - - - 160 |
| | | NEHMER - - - - 159 |

Baseball

Returning Lettermen

DAN DEMULLING
HARLAN FELLOWS
ALBERT FRANKO
LESTER HORN
VIRGIL MARTINSON

WALLACE MEHLBERG
JOHN STORZER
DICK TRACY
GORDON VINE
EUGENE WIRZ

SCHEDULE

| | | |
|----------|-----------------------------|-------|
| April 19 | Concordia - - - - - | Here |
| April 21 | Concordia - - - - - | There |
| April 3 | Eau Claire - - - - - | Here |
| May 3 | La Crosse - - - - - | There |
| May 6 | Stout - - - - - | There |
| May 10 | St. Cloud - - - - - | There |
| May 14 | St. Cloud - - - - - | Here |
| May 16 | La Crosse - - - - - | Here |
| May 20 | Stout - - - - - | Here |
| May 23 | Eau Claire - - - - - | There |
| May 24 | Stillwater Prison - - - - - | There |

Bolstered by ten returning lettermen from last year's club and pre-war Falcon nines, Coach Oscar Sjowall is expected to turn out a formidable River Falls team for the 1947 season.

At the opening practise sessions approximately forty candidates reported for duty. There are many outstanding prospects among those reporting and all indications point to a strong nine which should prove itself in conference play. Coach Sjowalls' 1946 team was undefeated in games played with conference schools. However, the conference was conducted on an informal basis. The 1947 aggregation will be shooting for the conference baseball title to add to the basketball championship.

Other Intramural Sports

Table tennis was another intramural sport in which keen interest and competition took place. Although run largely on an informal basis, a tournament was held in which 32 entries took part. Douglas Clark, a former college table tennis champ, and Jerry McGill emerged as the outstanding players in the tournament. Plans are under way for a softball league, an all-college track meet and other intramural activities. The interest shown in intramural sports this year assures the success of the spring intramural program and full participation is expected. Tennis facilities are available as well. Swimming was conducted on an informal basis throughout the year.



Palan, Barfknecht, Cox

The Women's Athletic Association

OFFICERS

PAT COX - - - - - President
 DOREEN BARFKNECHT - - - - - Vice-President
 LORRAINE PALAN - - - - - Secretary-Treasurer
 MARY LOUISE BRANSTAD, JEANNE BAILEY - Advisers

MEMBERS

| | | |
|-------------------|---------------------|-------------------|
| BETTY BENDER | DOROTHY EATON | JEAN OWENS |
| DOREEN BARFKNECHT | ANNA FIELD | LORRAINE PALAN |
| EVELYN BJORNSTAD | ELAINE GIBBON | ELAINE PETERSON |
| LOIS BRANDT | BERNICE HENDRICKSON | DOROTHY RUMPF |
| ELAINE BROWN | AUDREY HYGNSTROM | JEAN SCHAER |
| PAT COX | GRETCHEN LUEBKE | RUTH SEEKAMP |
| GLORIA CREE | HOPE METCALFE | MARILYN VANDEBERG |
| AUDREY DRISCOLL | MARJORIE NELSON | BEVERLY WALDEN |



Honor Team in Basketball

The purpose of the WAA is the promotion of women's intramural athletic activities. To this end, the group entertained prospective members at a picnic in the park on September 17, at which softball was the evening's program. The year's first team sport was hit-pin baseball, a game with the elements of soccer and baseball, which is played on an indoor baseball diamond. Elaine Gibbon was chosen manager of this sport. A freshman versus upperclass tournament was held with the upperclassmen emerging with a five game to three victory.

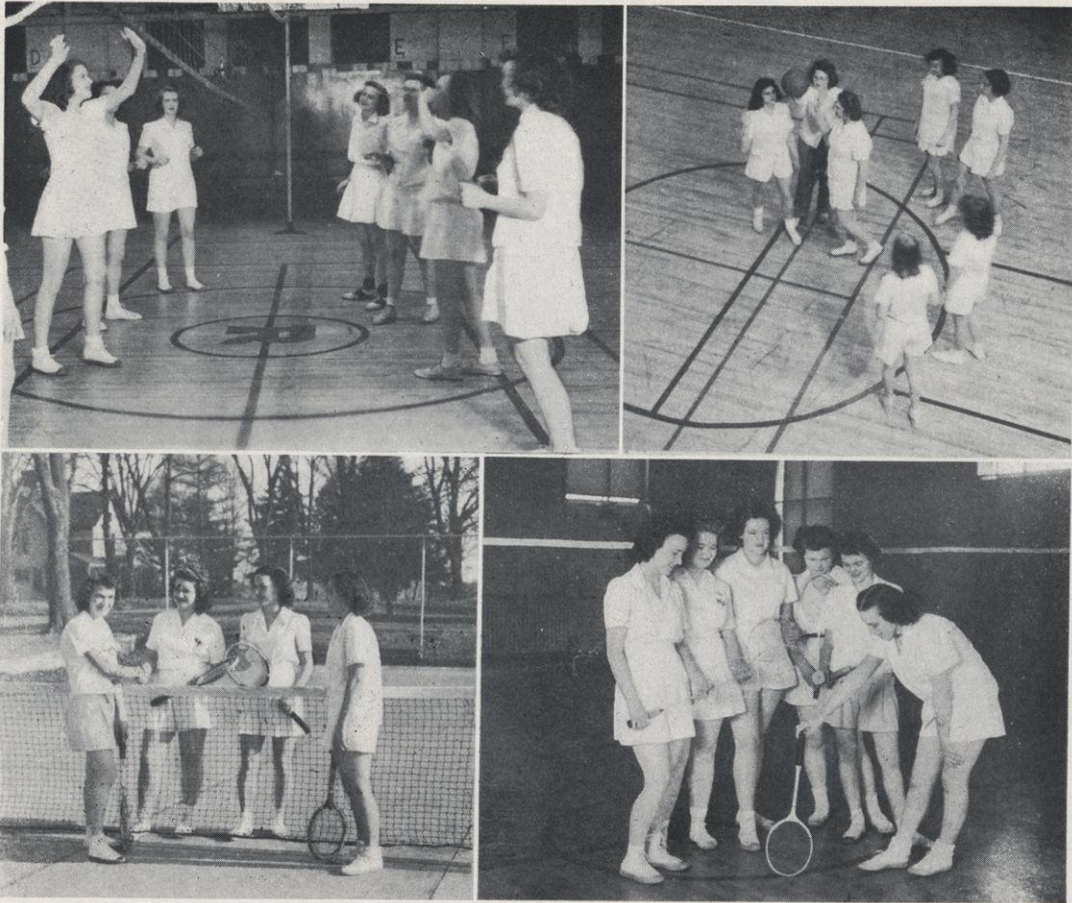
At the close of the first term the WAA's very capable adviser, Miss Mary Louise Branstad, left the college to become Mrs. W. E. Ireland. The organization presented her with a lovely blanket as a token of their appreciation of her work here. Miss Jeanne Bailey, a former personnel officer in WAC, took over the women's physical education department and became adviser to the WAA.

Basketball was the team sport of the winter term, and under the guidance of Miss Bailey the girls participating practiced fundamentals and worked on plays and rules. Ruth Seekamp was elected student manager for the sport. The WAA accepted an invitation from The Stout Institute of Menomonie to play basketball at their "Sports Night" on March 7. An honor team of twelve members represented River Falls and defeated the Stout team, 24-13.



Playday Luncheon

On March 22, the WAA presented its big event of the year, a rejuvenation of the playday which had been a pre-war annual event. The athletic associations of Stout, Eau Claire Teachers College, and Macalester College of St. Paul were invited to attend. Basketball and volleyball were the team sports with individual participation in swimming, badminton, and ping pong. The River Falls volleyball team captured the championship by edging Eau Claire in the finals, 36-34. In basketball the upperclassmen of River Falls won their morning games to reach the finals along with Stout. River Falls came out on top by a 24-19 score. Miss Opal Knox of the English department and Miss Bailey divided the refereeing and umpiring of the basketball games, and Miss Miller of Stout and Mrs. Fagan of Eau Claire officiated the volleyball games. A luncheon was given at 12:30 where the ladies of the Eastern Star served the WAA members and their guests, numbering close to 100 people. Dr. Eugene H. Kleinpell of River Falls welcomed the guests and urged the extension of women's intramural athletic activities. Following the recreational sports in the afternoon, Miss Irma Hathorn and Mrs. E. H. Kleinpell received at a coffee hour to conclude the day's activities. Hope Metcalfe and Ruth Seekamp were the co-chairmen in charge of the playday.



WAA Activities

The WAA of La Crosse extended an invitation to their playday for Saturday, March 29, and the River Falls WAA gladly accepted. Again volleyball and basketball were the team sports, although the various schools, Eau Claire, Winona, La Crosse, and River Falls, did not play as units. A musical interlude, featuring solo and group singing was presented before the luncheon. Following the luncheon, the hostesses, mostly physical education majors, offered assistance to beginners in shuffleboard, badminton, ping pong, quoit tennis, and swimming.

Softball, tennis, badminton, and archery were in order for the spring term's activities. A tournament in softball was promoted, as there were many eager members of last year's teams ready to join the freshman enthusiasts. Instruction in tennis was offered in physical education classes and, with devotees of previous years' instructions, a lively tournament followed. Badminton and archery are purely recreational sports and there were no tournaments sponsored, but there were many requests for instructions to which Miss Bailey complied by teaching the fundamentals of both games.

The WAA sponsors the American Red Cross senior life saving class which Miss Bailey conducts on Tuesday evenings.

As a financial project the WAA sold Falcon T-shirts to the students.

The Concert Band

B. J. ROZEHNAL - - - - - Director

Flutes

ANNALEE BENSON
MARJORIE MOORS
ROBERT PEARSON

Clarinets

DAVID HASS
JACK PRATT
CALVIN HEDLUND
RICHARD CARPENTER
WILLARD SOUTHARD
NORMA JULIAN
DALE VAN HEUKLOM
EDITH WHITAKER
CURTIS MILLER

Oboes

JOAN JOHNSON
THOMAS WILKINSON

Saxophones

JANET BLEIER
MILDRED REINKY
JAMES ZEPPLIN
STEPHEN COTONE

French Horns

DUANE WILCOX
JOHN NORRIS
CHARLES JENNINGS

Bassoon

DAVID BENSON

Cornets

JERRY WALLEN
GAIL CRIST
ROY BREDE
GORDON ALGREN
RICHARD HALVERSON
KARL JACOBSON
ROBERT REITZ
MARILYN KRUEGER

Trombones

VIRGIL BYNG
EUGENE FISCHER
RICHARD HOWARD
LLOYD WRIGHT
GLADYS BRIESMEISTER
HAROLD BIZER

Baritones

KENNETH BILDERBACK
LOIS WARD

Bass

CARL PENNO

Percussion

DONALD ANDERSON
RAMAN BRIGGS
EUGENE BROWN
GEORGE FOSS
ADELINE MACIOSEK





The A Cappella Choir

C. B. KING - - - - - Director

ERLING HANSEN - - - - - President

STEVEN COTONE - - - - - Business Manager

BETSY WELCH - - - - - Secretary-Treasurer

HARRIETTE FINKE - - - - - Librarian

1st Soprano

LOIS BRANDT
MYRNA HAGUE
ELEANOR HARRIS
JANE OLSON
MARY ELLEN PEDERSEN
BETTE PRATT
MILLICENT SKONE
BETSY WELCH

2nd Soprano

PHYLLIS ANDERSON
WANELL BOHN
SOPHIE FALL
HARRIETTE FINKE
MAXINE JENSEN
DOLORES PAYSON
BERNICE SAUERESSIG
MARJORIE TILLUNG

1st Alto

LOLA ESTENSON
JEAN KEES
BETTY LOU LOHMAN
GRETCHEN LUEBKE
LORRAINE PALAN
MARGARET ROCK
DOROTHY SANDSTROM

2nd Alto

LILA ESTENSON
VIRGINIA GULLICKSON
CHARLOTTE ROUTE
DOROTHY RUMPF
ELAINE STUCKY
LOIS WARD

1st Tenor

ROY BREDE
MARVIN GILBERTSON
ERLING HANSEN
JOHN LONG
JAMES MURPHY

2nd Tenor

RAMAN BRIGGS
ARNOLD FEILER
GENE FISCHER
RICHARD HALVERSON
GLENN NELSON

1st Bass

DAVID BENSON
HOWARD HANNON
VERNE KOLBA
WESLEY SCORE

2nd Bass

DONALD CARLSTROM
STEVEN COTONE
PHILIP FROILAND
RICHARD HOWARD
RONALD SOBOTTKA
LEONARD VIK



Back Row: Randall, Jensen, Rogness, Wilcox, Howard, Carlstrom.
 Middle Row: DeCraciun, Hamm, Hansen, Roehl, Garfield, Score, Klingelhoets.
 Front Row: Murphy, Briggs, C. B. King, Director, Lila Estenson, Accompanist, Gilbertson, Sobottka, Franz.

The Men's Glee Club

TRYN DE CRACIUN - - - - - President
 DUANE WILCOX - - - - - Business Manager
 WESLEY SCORE - - - - - Secretary-Treasurer
 ARNOLD JENSEN - - - - - Librarian

1st Tenor

RAMAN BRIGGS
 MARVIN GILBERTSON
 WILLARD A. HAMM
 ERLING HANSON
 JAMES MURPHY

2nd Tenor

SCOTT BAKER
 TRYN DE CRACIUN
 ARNOLD JENSEN
 MARCEL OLSON
 LELAND RANDALL
 PAUL ROGNESS
 DUANE WILCOX

1st Bass

LAWRENCE BEECHTREE
 WILLIAM FRANZ
 HOWARD GARFIELD
 CALVIN HEDLUND
 REUBEN ROEHL
 WESLEY SCORE

2nd Bass

DONALD CARLSTROM
 KARL JACOBSON
 GEORGE KLINGELHOETS
 RONALD SOBOTTKA

The Inner Choir

First Soprano

MYRNA HAGUE
 JANE OLSON

First Alto

LOLA ESTENSON
 JEAN KEES

First Tenor

MARVIN GILBERTSON
 ERLING HANSEN

First Bass

HOWARD HANNON
 VERNE KOLBA

Second Soprano

SOPHIE FALL
 MAXINE JENSEN

Second Alto

LILA ESTENSON
 ELAINE STUCKY

Second Tenor

GENE FISCHER
 GLENN NELSON

Second Bass

DONALD CARLSTROM
 RICHARD HOWARD
 LEONARD VIK



Gullicksen, Accompanist, Jensen, Behn, Stucky, Skone, Estenson, Pedersen

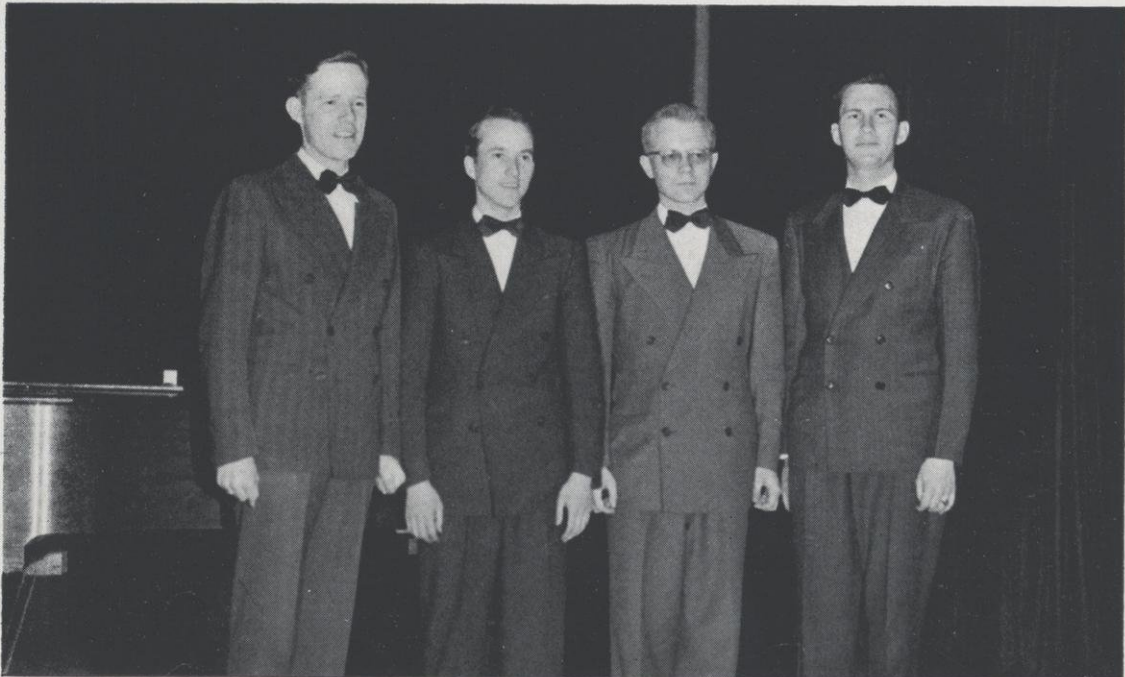
The Small Ensembles

The Male Quartet

| | | |
|----------------|-----------|--------------|
| ERLING HANSEN | - - - - - | First Tenor |
| GLENN NELSON | - - - - - | Second Tenor |
| DAVID BENSON | - - - - - | Baritone |
| RICHARD HOWARD | - - - - - | Bass |
| DOLORES PAYSON | - - - - - | Accompanist |

The Girls' Sextet

| | | |
|---------------------|---------------|---------------|
| MARY ELLEN PEDERSEN | WANELL BOHN | LOLA ESTENSON |
| MILLCENT SKONE | MAXINE JENSEN | ELAINE STUCKY |
| VIRGINIA GULLICKSON | - - - - - | Accompanist |



Hansen, Nelson, Benson, Howard



"For how I am resolved, you know. Not to bestow my youngest daughter, until I have a husband of the elder." (L. DuBois as Baptista)

THE TAMING OF THE SHREW

A Comedy in Two Acts

By WILLIAM SHAKESPEARE

Cast

| | |
|-----------------|-------------------|
| PETRUCHIO - - | PHILIP FROILAND |
| KATHERINA - - - | BETH LANE |
| BAPTISTA - - - | LE ROY DU BOIS |
| BIANCA - - - | MARY FORTHUN |
| LUCENTIO - - - | HARRY WILSON |
| HORTENSIO - - | WARREN JOHNSON |
| GREMIO - - - | MARTIN SEXTON |
| BIONDELLO - - | ROBERT LOVELL |
| WIDOW - - - - - | PAT COX |
| GRUMIO - - - | NORMAN DRESCHER |
| CURTIS - - - | FRANKLIN DIETZLER |
| NATHANIEL - - | GEORGE SPELVIN |
| TRANIO - - - | RICHARD CARPENTER |
| SERVANT - - - | JERRY HEALY |
| SERVANT - - - | KENNETH PETERS |
| TAILOR - - - - | AUGUST KLUG |
| HABERDASHER - | BERNARD CLELAND |
| OLD MAN - - - | FRANCIS FOGERTY |



"Good morrow, Kate; for that's your name, I hear." (P. Froiland)
 "They call me Katherine that do talk of me." (B. Lane)



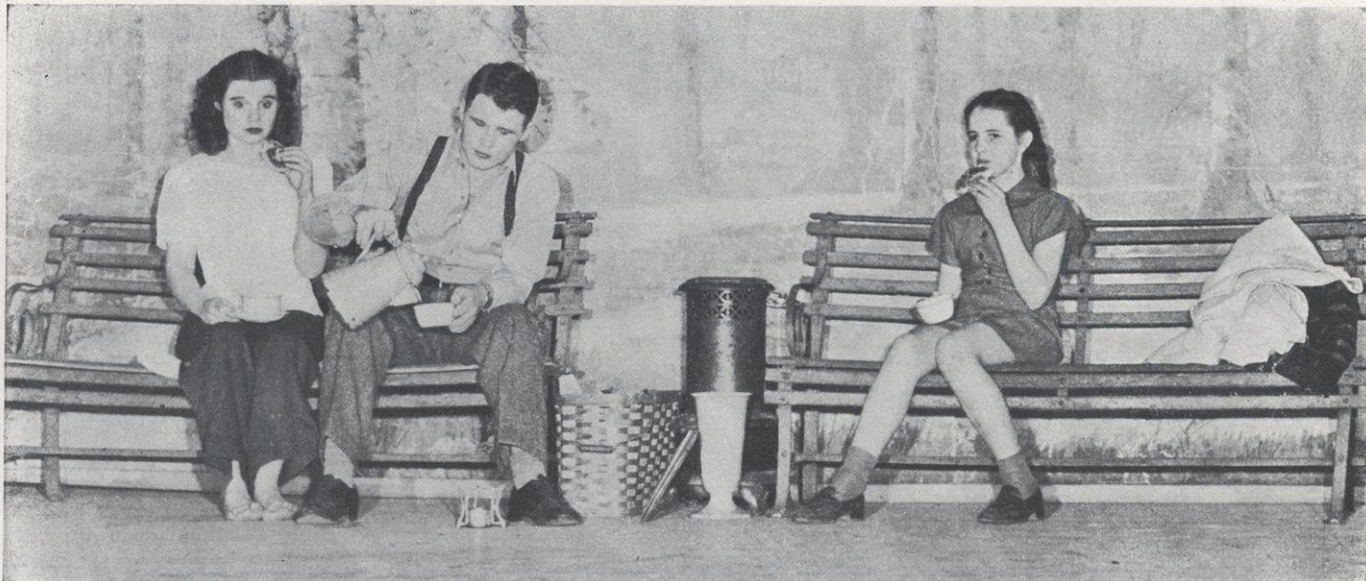
"When you are gentle, you shall have one, too. And not till then." (P. Froiland)

Production Staff

| | | |
|-------------------|-----------|------------------|
| DIRECTOR | - - - - - | CARLETON C. AMES |
| COSTUMES | - - - - - | MILLICENT SKONE |
| PUBLICITY MANAGER | - - - - - | PAT COX |
| BUSINESS MANAGERS | - - - - - | VERA FINSTAD |
| | | MARGUERITE BAIRD |
| COFFEE HOUR | - - - - - | MARIE BRESLIN |
| PROPERTY MANAGER | - - - - - | DORIS JACKMAN |
| MAKE-UP | - - - - - | BETTE PRATT |
| STAGECRAFT | - - - - - | LE ROY DU BOIS |



"Quick proceeders, marry. See how they kiss and court!" (W. Johnson)



Home, Sweet Home

BIRDS HAVE NESTS

A Comedy in Three Acts

By CARLETON C. AMES

Cast

| | | |
|--------------|-----------|-------------------|
| JANE ALLEN | - - - - - | MILLICENT SKONE |
| JOE ALLEN | - - - - - | LE ROY DU BOIS |
| AMY ALLEN | - - - - - | THEO GREGERSON |
| MARGE HART | - - - - - | ENID ERICKSON |
| AL HART | - - - - - | DAN DEMULLING |
| MRS. MUELLER | - - - - - | LOIS BRANDT |
| MRS. OLSON | - - - - - | LORRAINE PALAN |
| MR. HIGGINS | - - - - - | FRANCIS FOGERTY |
| GOLDIE | - - - - - | PAT COX |
| LAURINE | - - - - - | ELAINE PETERSON |
| MRS. HEATH | - - - - - | MARLIS VOSKUIL |
| POLICEMAN | - - - - - | FRANKLIN DIETZLER |

Production Staff

| | | |
|-------------------|-----------|----------------|
| DIRECTOR | - - - - - | CARLETON AMES |
| BUSINESS MANAGER | - - - - - | ELLEN REID |
| PUBLICITY MANAGER | - - - - - | VERA FINSTAD |
| LIGHTING EFFECTS | - - - - - | ELAINE GIBBON |
| STAGECRAFT | - - - - - | WARREN JOHNSON |
| PROPERTY MANAGER | - - - - - | DOROTHY MOSS |
| MAKE-UP | - - - - - | PAT COX |

The College Masquers

Officers

| | | |
|------------------|-----------|----------------|
| LOIS BRANDT | - - - - - | PRESIDENT |
| PAT COX | - - - - - | VICE-PRESIDENT |
| LORRAINE PALAN | - - - - - | SECRETARY |
| MARY FORTHUN | - - - - - | TREASURER |
| CARLETON C. AMES | - - - - - | ADVISER |

Alpha Psi Omega-Iota Beta Cast

The membership in this national honorary dramatic fraternity is the reward of those Masquers whose contribution to dramatic activities on this campus has been outstanding.

MEMBERSHIP IN 1946-1947

| | |
|----------------------|------------------|
| VERA LOUISE FINSTAD | TERRY HAYES |
| MILLICENT SKONE | MARIE BRESLIN |
| MARGUERITE BAIRD | CARLETON C. AMES |
| MARY FRANCES HAWKINS | |



Palan, Forthun, Cox, Brandt

Keeping in touch with modern drama, developing a finer appreciation for the more worthy plays, and, in all ways possible, fostering dramatic interests in the college are the purposes of the College Masquers. To entertain prospective members, a picnic was planned at the city park on September 19, and, although a heavy rain was falling outside, the Masquers enjoyed roasting "wienies" before a blazing log fire in the lodge. Twenty-two people expressed a desire to join the club at this meeting.

Shakespeare's **The Taming of the Shrew** was selected as the Masquers' main dramatic effort of the fall term. Beth Lane as the shrew and Philip Froiland as her husband headed the cast of the very successful production. For the play the Masquers secured authentic Elizabethan costumes from the Hooker-Howe Costume House in Massachusetts. A matinee was presented on the afternoon of December 11, and was attended by students from various high schools in the vicinity, including those in River Falls, Ellsworth, Spring Valley and Baldwin.

This year the Masquers rejuvenated the traditional "Masquer Formal" with added embellishments. They sponsored the "Mardi Gras," a masked ball, for which Clyde Frawley's orchestra provided a charming musical background. The North Hall gymnasium was decorated with garrishly painted murals, streamers, and brightly colored balloons, further developing the atmosphere of gay New Orleans at "Mardi Gras." A one-act play, **She's More to Be Pitied than Scorned or Parted on Her Wedding Morn**, under the direction of Lorraine Palan, was presented at Assembly on November 21. The cast of this farcical melodrama included Lois Brandt, John Winn, Emily Wahlquist, Marjorie Nelson, Marjorie Miller, and Francis Fogerty.

For their spring production, the Masquers chose an original three-act comedy, **Birds Have Nests**, by their director, Mr. Carleton Ames. Millicent Skone and LeRoy Dubois played the leading roles in this play which was written around the trials and tribulations of a young veteran, his wife, and daughter in procuring a place in which to live. The play's first performance was by the Wisconsin Players at the University of Wisconsin in November, 1946. Capacity audiences at the five performances in the Wisconsin Memorial Theatre gave the play a very cordial reception. Critics for the Madison newspapers were also cordial, one of them remarking that, in addition to other reasons for its success, . . . "most was due to author Carleton Ames's knack for character and dialogue . . ."



Gaylord, Steinbron, Engler (Coach), Peters, Nelson, Schillberg, Hawkins (Coach), Garfield, Olson, Myers, Wallace, Daniel

Forensics

1946-1947 Debate Schedule

| | | | |
|------------------|------------------------------------|-----------|---------------------|
| December | St. Thomas | - - - - - | There |
| January 24 | St. Thomas | - - - - - | Here |
| February 7-8 | Red River Valley Tournament | - - - - - | Moorhead |
| February 21-22 | Eau Claire Tournament | - - - - - | Eau Claire |
| March 10, 11, 12 | Northwest Tournament | - - - - - | St. Thomas |
| March 20 | Assembly | - - - - - | Here |
| March 22 | "B" Tournament | - - - - - | Here |
| April 1 | University of Minnesota | - - - - - | Here |
| April 6-11 | National Pi Kappa Delta Convention | - | Bowling Green, Ohio |

OTHER INTERCOLLEGIATE SPEECH ACTIVITIES

| | | |
|-------------------------|-----------|---|
| EXTEMPORANEOUS SPEAKING | - - - - - | Louis Daniel Philip Froiland Lester Gaylord |
| ORIGINAL ORATORY | - - - - - | Kenneth Peters Melvin Steinbron |
| AFTER-DINNER SPEAKING | - - - - - | Jack Wallace |
| DISCUSSION | - - - - - | Louis Daniel Jack Wallace |

Fourteen students debated the 1946-1947 intercollegiate question, "Resolved: that labor should be given a direct share in the management of industry." Class debates, non-decision intercollegiate debates, public demonstration debates, and tournament debates formed the activities of the year.

In two exchange debates early in the season with St. Thomas College of St. Paul, Jack Wallace, Newton Nelson, Melvin Steinbron, Louis Daniel and Philip Froiland participated.

Two teams (Wallace-Daniel and Gaylord-Steinbron) competed in the Red River Valley Tournament at Concordia College, Moorhead, Minnesota. Each team won half of its debates. The Wallace-Daniel combination ranked third in points. At this same tournament Melvin Steinbron placed second in the oratory finals with his original oration, "Liquored America." In impromptu speaking Louis Daniel placed fourth in the finals.

Eight speakers attended the Annual Speech Meet at Eau Claire. Three debate teams (Wallace-Daniel, Gaylord-Steinbron, Nelson-Schillberg) competed with forty-six teams from eighteen colleges and universities. Jack Wallace and Louis Daniel won all five rounds of debate and ranked highest in rating points. In the play-off with Ripon, River Falls lost. Jack Wallace won second in the after-dinner speaking finals, and Kenneth Peters placed fourth in the finals with his original oration on racial discrimination.

River Falls entered two men's teams in the Northwest Tournament held at St. Thomas College in St. Paul. Sixty-two teams from forty-two colleges in seven states competed in the second largest tournament in the United States. The Wallace-Daniel team won five out of eight debates and placed third in final ratings. Louis Daniel participated in a roundtable discussion of labor relations over KSTP radio station.

Sixteen teams from six colleges competed in the "B" tournament at River Falls. Debaters who competed at the Northwest Tournament judged four rounds. Schillberg and Nelson tied for second on the basis of wins and losses; Peters and Jerry Finn tied for second place on points awarded on the basis of delivery, logic, argumentation, and material. Froiland and Peters made the all-tournament team.

Climaxing a successful debate season, four Pi Kappa Delta members entered the National Convention at Bowling Green, Ohio, April 6-11. Wallace and Daniel took part in eight debates; Steinbron entered in the original oratory division; Daniel and Wallace participated in discussion of the question, "Our foreign policy in relation to Russia;" Gaylord spoke extemporaneously in five rounds on "Threats to World Peace."

Wallace, Gaylord, Froiland, Peters, Schillberg, and Steinbron were initiated into Pi Kappa Delta in an inspiring ceremony during the spring term. Louis Daniel advanced to the degree of Special Distinction. The ceremony was conducted by Miss Marion E. Hawkins, who holds the degree of Special Distinction.

Miss Marion E. Hawkins and Mr. Walter J. Engler directed the speech program throughout the season.



Finn, Barfknecht, Froiland



Johnson, Nelson, P. Anderson, Swenson, A. Anderson, Tschudy, Byng

The 1947 Meletean

Co-Editors

PHYLLIS ANDERSON

RICHARD SWENSON

SANDRA JOHNSON

Business Manager

GLENN NELSON

Assistant Editors

AMY ANDERSON

ALBERT TSCHUDY

Contributing Editors

PATRICIA COX

LILA ESTENSON

ROBERT McCARDLE

HOPE METCALFE

Photographers

VIRGIL BYNG

EUGENE BROWN

Typists

BETTY BOE

KATHLEEN REID

Student Directory

MARGUERITE BAIRD

JOYCE JULIAN

GLENN NELSON

Faculty Adviser

MAUD A. LATTA



Benson, DuBois, Whitaker, Stone, E. Wyman

The Student Voice

Editor

JOHN C. WHITAKER

Associate Editor

LE ROY L. DU BOIS

Business Manager

DAVID BENSON

Assistant to Business Manager

PAT GREENFIELD

Sports Editor

MARK STONE

Feature Editor

JACK WYMAN

News Reporters

GRETCHEN LUEBKE
CHARLOTTE ROUTE
DORIS JACKMAN

HARRIET ADAM
SANDRA JOHNSON
PHYLLIS ANDERSON

BERNARD CLELAND
BETTE MYERS
MARILYN KRUEGER

Feature Writers

DICK FREEMAN
BETTE PRATT

MARY J. MURRY
LOIS LANDBERG

Sports Writers

ED McCOLLOW

'BUTCH' McCARDLE

JOHN STORZER

Proof and Copy Readers

ELDON JACOBSON
LILLIAN GERAETS

EDITH WHITAKER
SANDRA JOHNSON

Adviser

WALKER D. WYMAN



Stucky, Baird, Jorstad, Reid, Landberg, Rees.

Homecoming

One of the outstanding events of the college year, 1946-1947, was homecoming—the first real homecoming since pre-war days. And what a homecoming it was! To it came a record-breaking crowd of former students, grads and friends, with an especial welcome to the returned veterans.

The celebration began Friday evening with the regulation pep rally. There were skits, cartoons, songs and cheers, with the climax of the program the crowning of the homecoming queen, Felice Jorstad. Queen Felice was attended by Lois Landberg, Elaine Stucky, Kathleen Reid, Marguerite Baird and Rebecca Rees, who had been chosen also as candidates for the position of queen.

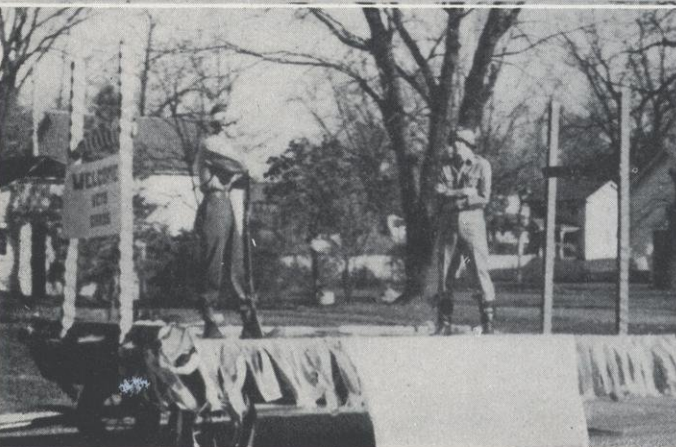
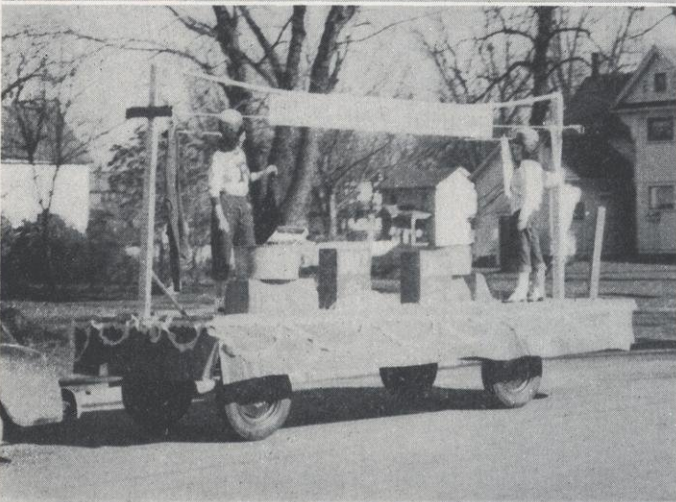
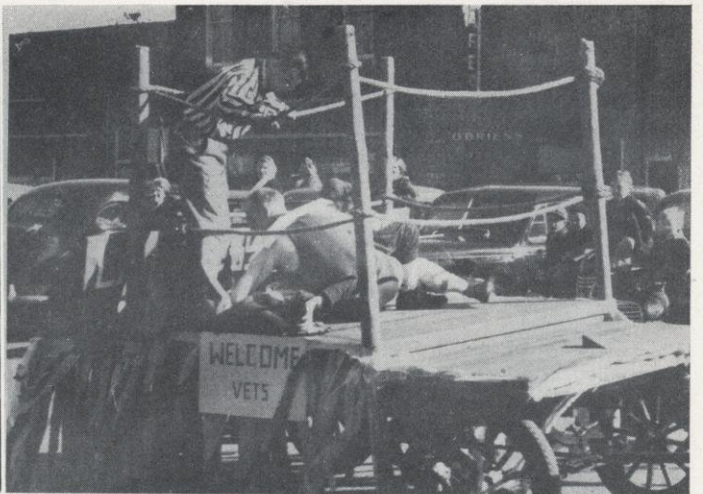
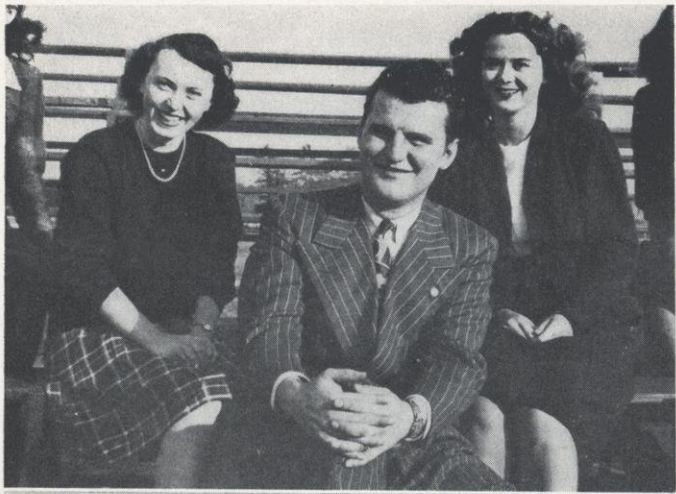
After the pep rally, over 100 students formed the gigantic snake dance which wound its way downtown to make the traditional crashing of main street.

The parade Saturday morning was one of the largest in the history of the college, with many well designed and original floats. The veterans' float won first place.

The highlight of the day was the game with La Crosse, and the slogan "Toss LaCrosse," originated by Nate DeLong, proved to be true, the victory making the homecoming all the more the perfect event it was.

After the games the Social room in South Hall was literally overrun by alumni and former students, who were the guests of the faculty at a coffee hour.

A dance which packed North Hall gym to capacity concluded the festivities. To Jack Wills, manager, and his able assistants goes the credit for the success of the 1946-1947 homecoming.



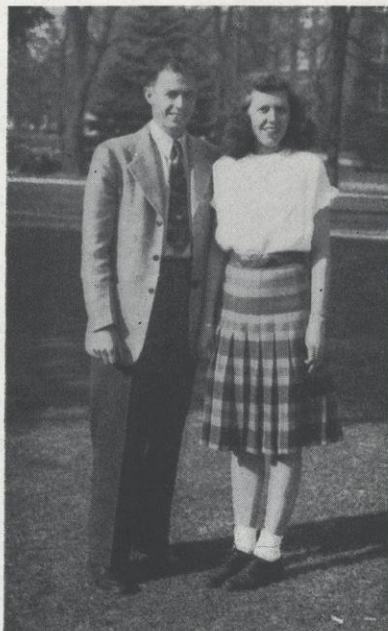


Winter Carnival or JOE COLLEGE DAY

Sorry, but this isn't Virgil and Lila this year. We just wanted to show with a last year's picture what we hoped to do. One would think that in northern Wisconsin in the middle of the month of February one might count on a winter carnival. However, this year the elements were against us, and we found ourselves left high and dry with beautiful plans but no snow. Still, in spite of the summer-like weather when it ought to be winter, we had a good time.

A dance was held in North Hall presided over by Joe College, Walter Weihrouch, and his queen, Phyllis Anderson. A hotly contested election at a penny a vote had been held during the preceeding week, and the large number of votes which placed Walt as the College Joe was testimony to his popularity.

Ed McCollow was in charge of the Carnival and deserves a great deal of credit for his efficient planning of the events which could not come off as well as for the final success of the day.



Weihrouch, Anderson



Standing: Gregor, Oleson, Bauer, Prescott, Freeman.
Kneeling: Harrington, Frazier.

“Bow-Tie Day”

“Bow-Tie Day” was the designation given to Friday, March 14, when college students and townspeople showed their loyalty to the basketball team by wearing their bow-ties.

Al Prescott, student basketball manager, originated the idea of bow-ties on the campus. He noticed that each time he wore a bow-tie to a basketball game, River Falls won the game. Soon Coach Schlagenhauf and Dr. Kleinpell were wearing bow-ties on the days the team played. Next Dr. Kleinpell’s “order” that all faculty men wear the “lucky” bow-ties on game days was observed. Then students donned bow-ties. Finally the spirit spread to the town and Mayor Bartosh proclaimed Saturday, March 8, “Bow-Tie Day” for town citizens.

The climax of the “Bow-Tie Day” was a dance in the North Hall gym, March 14, admission to which was the wearing of a bow-tie by men students.



Puff-Pant Prom

Be a gal in calico
Or be her Puff-Pant date.
Enjoy a gala frolic
On March fifteenth at eight.
Come two by two
To the South Hall gym
One as "her" and
The other as "him."

So read the invitations of the YWCA to their annual Puff-Pant Prom, March 15. Calico gals decorated the walls and a calico doll occupied a place of honor. The "man" of the two-girl couple gave his best girl a unique corsage and paid her the usual masculine attention during the evening. In agreement with custom, the fifty male students who attended that evening's YWCA "Bean Soup Supper" crashed the girls' prom. A faculty group added to the fun of the evening.



YWCA Christmas Formal

A lighted Christmas tree in the center of the floor, two tall, lighted candles on both sides of the orchestra with sprigs of evergreen on the walls, and frosted punch served from a frosty table—this was the setting for the Christmas formal sponsored by the YWCA on December 14.

Over one hundred couples danced to the music of the Black Hawk Aces, drank punch, and chatted with their friends. Miss Moss and Miss Lieneman were the chaperones for the evening, and their presence added to the festive atmosphere. The grand march was led by Rebecca Rees, the president of the YWCA, and her escort, Jerry Wallen.

The committee in charge of the party was Lois Hatch, chairman, Sandra Johnson, Charlotte Route, and Delores Payson. Those who were there say, "The Christmas formal was one of the nicest and most enjoyable dances we have ever attended at college!" And those who weren't, say, "Next year the Christmas formal is a must on our calendar!"



Wallen, Rees

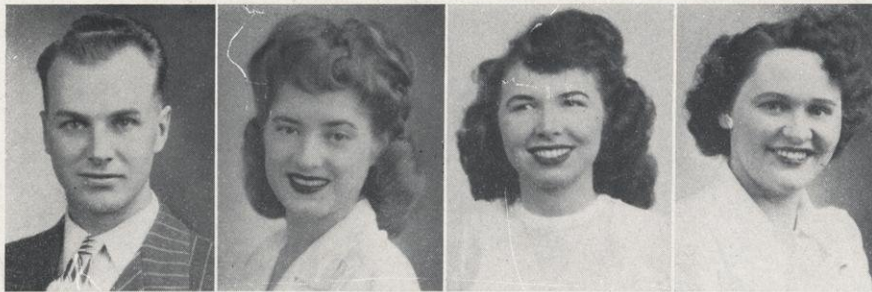


R Club Formal

One of the most outstanding social events of the year was staged in North Hall gym on February 8th when the R Club sponsored its annual winter formal. Strictly in keeping with the reputation the R Club has for successful parties, the formal was well attended by both students and faculty. Under the chairmanship of President Rudy Meehan, the party was a success in every way. The gym was beautifully decorated in red and white with the letter R as the central theme. A large lighted red R was suspended in the middle of the ceiling, with red and white streamers radiating from it. Lighted R's also were placed in the far corners of the balcony to add to the impressiveness of the atmosphere. The familiar R blankets of the athletic department served as wall hangings. The decoration committee consisted of Les Horn, Al Franko, Allen Linster, and Bob McCardle, aided by several feminine hands.

The fruit punch was prepared by Mrs. Jerney, under the careful direction of John Storzer. Fred Ubbelohde was in charge of tickets and dance programs.

The smooth music of the Blackhawk Orchestra added the final touch. The entire affair, from the efficient coat checking system to the effective lighting and decorations, was outstanding and will long be remembered by all those who attended.



Sather

Jacobson

Finstad

Jennings

The Junior Prom

On the evening of May 3, the juniors, seniors and their friends entered the "Pastel Room" for an evening of dancing to the romantic music of Henry Burton and his eight piece orchestra. The occasion for this gala evening was the annual Junior Prom.

The decorating committee, composed of Dorothy Kay, Lola Estenson and Marguerite Baird, with the help of the Junior class members, had transformed the North Hall gym into a modern, beautifully decorated ballroom, complete with chandeliers and terraces.

Marvin Sather, class president, and his chosen queen, Marion Jacobson, led the grand march. The 1947 Junior Prom was an event long to be remembered by the members of the class and their friends.

Mothers Day

The college observes Mothers Day this year on May 9. It has been an annual event since 1940, when the students invite their mothers to visit the school on the Friday afternoon nearest Mothers Day. This gives the students an opportunity to show their mothers the campus, and the mothers an opportunity to become acquainted with their sons' and daughters' fellow students as well as the activities of the school.

This year there were tours of the campus, a luncheon, then a program. In the program were presented the activities of the school. The day ended for the mothers with a coffee hour in the women's gymnasium.

The day's activities were planned by a committee of eight girls, two girls from each class. Dorothy Jennings and Vera Louise Finstad, seniors, were co-chairmen. The others were Joyce Julian and Ruth Erickson, juniors, Marilyn Krueger and Joyce Condit, sophomores, and Elaine Gibbon and Margaret Aasterud, freshmen. Mothers Day has always been a success, and this year it was especially so.



Organizations

← INDUSTRIAL ARTS



Baird, Estenson, Erdmann, Soli, Montbriand, Hannon, Wirz, Sather, Carlstrom, Young, Skone

Student Senate

Officers

| | | |
|-----------------|-----------|----------------|
| HOWARD HANNON | - - - - - | PRESIDENT |
| EUGENE WIRZ | - - - - - | VICE-PRESIDENT |
| MILLICENT SKONE | - - - - - | SECRETARY |
| HARTMAN SOLI | - - - - - | TREASURER |

Class Presidents

| | | |
|-----------|-----------|---------------------|
| SENIOR | - - - - - | MARVIN ERDMANN |
| JUNIOR | - - - - - | MARVIN SATHER |
| SOPHOMORE | - - - - - | JOSEPH YOUNG |
| FRESHMAN | - - - - - | BENEDICT MONTBRIAND |

ALLOCATION COMMITTEE

Student Members

HARTMAN SOLI HOWARD HANNON MARGUERITE BAIRD

ASSEMBLY COMMITTEE

Student Members

HARTMAN SOLI LOLA ESTENSON

The purpose of the Student Senate is to promote the best interests of the college and to develop a spirit of co-operation and good fellowship throughout the school.

The senate works primarily through committees, of which the most important is the party committee. All of the social functions of the school are under the responsibility of this committee. Both Marvin Sather and Millicent Skone served as head of the party committee. This year the Senate provided the money for all of the all-school parties and dances. This enabled the students to attend the all-school functions free. Other committees that are of importance are the allotment committee, the assembly committee, and the student-faculty relations committee. The Senate acts as the representative body to present the needs of the students to the administrative council.

The Senate has started the proper steps in organizing our campus as a member of the Nation Student Movement.

The Senate is composed of eleven members. Seven of the members are chosen by the student body, and the remaining four members are the four class presidents.



Landberg, Finstad, Anderson

Honor Society

Officers

| | | |
|---------------------|-----------|---------------------|
| LOIS LANDBERG | - - - - - | PRESIDENT |
| AMY ANDERSON | - - - - - | VICE-PRESIDENT |
| VERA LOUISE FINSTAD | - - - - - | SECRETARY-TREASURER |

Gold R

LOIS E. HATCH

LOIS LANDBERG

MILLCENT SKONE

Silver R

MARGARET AASTERUD
 MARGUERITE BAIRD
 ANNALEE BENSON
 DAVID BENSON
 EVELYN BLOOM
 LOIS BRANDT
 MARIE BRESLIN
 ROGER CERNOHOUS
 CLINTON CHRISTIANSON
 GAIL CRIST
 LOUIS DANIEL
 FLOYD DOERING
 LE ROY DU BOIS
 KENNETH ENLOE
 LILA ESTENSON
 LOLA ESTENSON
 DEAN FLYGSTAD
 KERMIT GARLID
 WAYNE GARLID
 LESTER GAYLORD
 WILBERT GIPP
 VIRGINIA GULLICKSON

WILLIAM GUTZLER
 WILLARD HAMM
 HOWARD HANNON
 DAVID HASS
 LOIS HATCH
 ARLINE HAUGSBY
 WILLIAM HAYES
 FLOYD HENRIKSEN
 GILBERT HOLMSTOEN
 LESTER HORN
 ALBERT JOHNSON
 SANDRA JOHNSON
 JOYCE JULIAN
 VERN KOLBA
 LOIS LANDBERG
 HARRY LARSEN
 ROBERT LOVELL
 HAROLD MASON
 DON MATHISON
 RUDOLPH MEEHAN
 MARJORIE MILLER
 BETTY MYERS
 KATHRYN NELSON

NEWTON NELSON
 WILLIAM OLSON
 DONALD PASSOW
 DOLORES PAYSON
 ROBERT PEARSON
 KERMIT QUINNELL
 LURA RIEKEN
 WILLIAM SHANKS
 MILLCENT SKONE
 CATHERINE STEPHENS
 RONALD STUBER
 LORNA SWANBERG
 SHIRLEY SWANSON
 RICHARD SWANSON
 ELLERY SWIM
 EMIL VANDERMAUSE
 LEONARD VIK
 GLENN WALLACE
 COLLEEN WESSLEN
 JOHN WHITAKER
 THOMAS WILKINSON
 LILLIAN WRIGHT



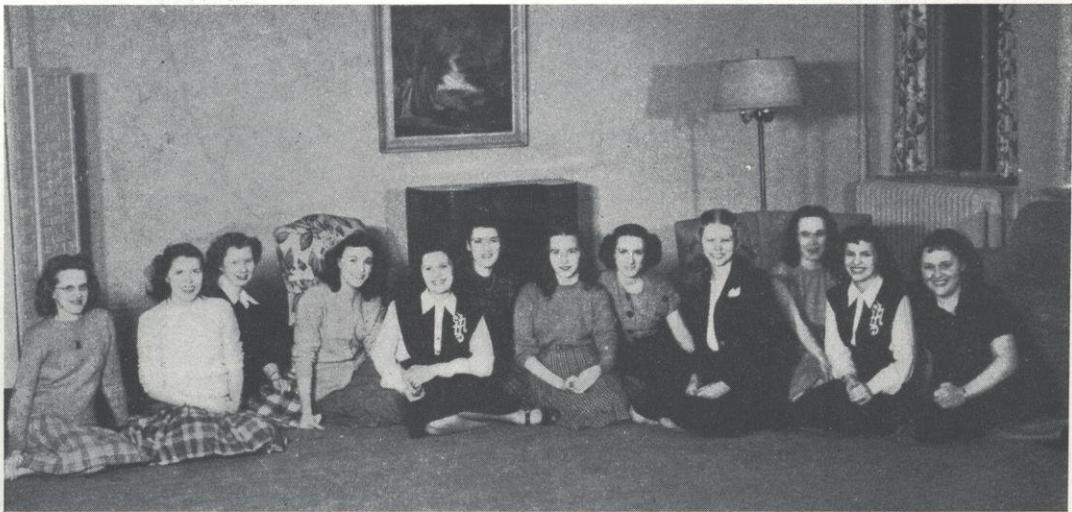
Back row: Waters, Taylor, Wyman, Benson, Tschudy
 Front row: Byng, O'Locki, De Craclun, Schirmer, Daniel, Roberts, Jacobsen

Young Men's Christian Association

| | | |
|-----------------|-----------|----------------|
| VIRGIL BYNG | - - - - - | PRESIDENT |
| CHARLES TAYLOR | - - - - - | VICE-PRESIDENT |
| LLOYD FALK | - - - - - | SECRETARY |
| EUGENE SCHERMER | - - - - - | TREASURER |

CABINET MEMBERS

ELWYN ROBERTS, AL TSCHUDY, FRANK OLOCKI, LOUIS DANIEL, TRYN DeCRACIUN, KARL JACOBSON, PAUL ROGNESS



Whitaker, Anderson, Geving, Rees, Lola Estenson, Julian, Payson, Metcalfe, Landberg, Cree, Lila Estenson, Jennings.

Young Women's Christian Association

| | | | | | |
|------------------|-----------|--------------------|------------------|-----------|-------------------------|
| REBECCA REES | - - - - - | President | GLORIA CREE | - - - - - | Publicity Chairman |
| LAVONNE GEVING | - - - - - | Vice-President | LILA ESTENSON | - - - - - | Music Chairman |
| JOYCE JULIAN | - - - - - | Secretary | LOLA ESTENSON | - - - - - | Social Chairman |
| DELORES PAYSON | - - - - - | Treasurer | LOIS LANDEERG | - - - - - | Social Service Chairman |
| HOPE METCALFE | - - - - - | Program Chairman | PHYLLIS ANDERSON | - - - - - | Finance Chairman |
| DOROTHY JENNINGS | - - - - - | Religious Chairman | EDITH WHITAKER | - - - - - | Librarian |

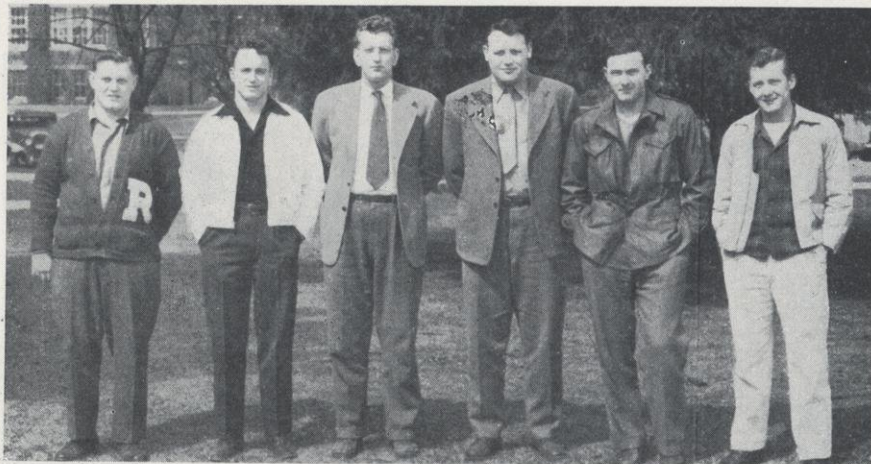


Frenchick, Baird, Polk, McCollow

Newman Club

Officers

| | | |
|------------------|-----------|----------------|
| EDWARD MC COLLOW | - - - - - | PRESIDENT |
| MARGUERITE BAIRD | - - - - - | VICE-PRESIDENT |
| GEORGE FRENCHICK | - - - - - | TREASURER |
| CATHERINE POLK | - - - - - | SECRETARY |



McCardle, Tobias, Boven, Doonan, Carlstrom, Gavic

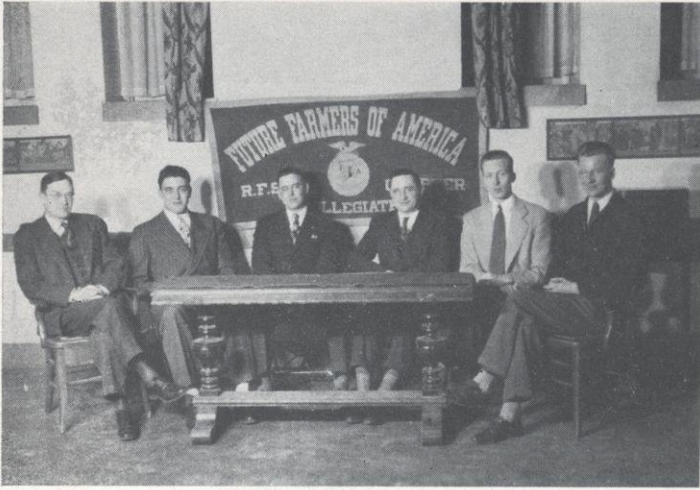
Student Veterans Association

Officers

| | | |
|------------------|-----------|-----------------|
| TERRY DOONAN | - - - - - | PRESIDENT |
| DONALD CARLSTROM | - - - - - | VICE-PRESIDENT |
| HARRY FROKJER | - - - - - | SECRETARY |
| BERNARD BOVEN | - - - - - | TREASURER |
| MARVIN SATHER | - - - - - | LIASON OFFICER |
| WILLIAM DAWSON | - - - - - | SERVICE OFFICER |

Board of Directors

| | | |
|--------------|-------------------|-----------------|
| HARTMAN SOLI | WILLIAM SCHUELLER | GORDON JACOBSON |
|--------------|-------------------|-----------------|



J. M. May, Adviser; Sather, Redman, Hendrickson, Martinson, Vine, Demulling.
 J. M. May, Adviser; Kuhn, Niedzwiecki, Donkersgoed, Stuber, Erdmann.

Future Farmers of America

OFFICERS

First Semester

| | | |
|----------------------|-------|----------------|
| BERNARD DONKERSGOED | - - | PRESIDENT |
| LAWRENCE NIEDZWIECKI | - - | TREASURER |
| HOWARD KUHN | - - - | VICE-PRESIDENT |
| EDWARD GRESCHNER | - - - | SECRETARY |
| MARVIN ERDMANN | - - - | REPORTER |
| RONALD STUBER | - - - | SENTINEL |

Second Semester

| | | |
|------------------|-------|----------------|
| FLOYD HENRICKSON | - - - | PRESIDENT |
| MARVIN SATHER | - - - | VICE-PRESIDENT |
| JAMES REDMOND | - - - | SECRETARY |
| VIRGIL MARTINSON | - - - | TREASURER |
| GORDON VINE | - - - | REPORTER |
| DAN DEMULLING | - - - | SENTINEL |



Wood, Bloom, Wright, Owens

Rural Life Club

OFFICERS

| | | |
|-------------------|---------|----------------|
| LILLIAN WRIGHT | - - - - | PRESIDENT |
| JEAN OWENS | - - - - | VICE-PRESIDENT |
| VIOLET SCHNITZLER | - - - - | SECRETARY |
| NORMA WOOD | - - - - | TREASURER |



The R Club

The R Club is a college organization whose members have won either a major or a minor letter in some varsity sport. Its purpose is to sponsor intramural sports and aid in promoting sportsmanship at all athletic contests conducted at River Falls.

Officers

RUDOLPH MEEHAN - - - - - PRESIDENT
FRED UBBELOHDE - - - - - VICE-PRESIDENT
JOHN STORZER - - - - - SECRETARY-TREASURER

Football

RICHARD BERGGREN
DOYLE BEYL
BYRON BROOKE
GENE CARDINAL
NATE DE LONG
DANIEL DEMULLING
HARRY FROKJER
ARNOLD FEILER
ERNST GLAUNER
GORDON GRILLEY

ALFRED HEICHEL
HAROLD LE JEUNE
ALLAN LINSTER
ROBERT McCARDLE
RUDOLPH MEEHAN
JAMES MOORE
ROBERT OLSON
GORDON OLSON
NORVAL OLSON

JAMES REDMOND
DAVID RUHSAM
GORDON SCHOCK
WAYNE SINNEN
JOHN STORZER
RICHARD SWENSON
FRED UBBELOHDE
CARL WICKMAN
ROBERT WILSON
EUGENE WIRZ

Basketball

NEWMEN BENSON
BYRON BROOKE
GENE CARDINAL
NATE DE LONG
EUGENE DEISS
DANIEL DEMULLING

ARNOLD FEILER
HARRY GIBBS
JERRY HEALY
JACK HENNEMAN
EDWARD McCOLLOW

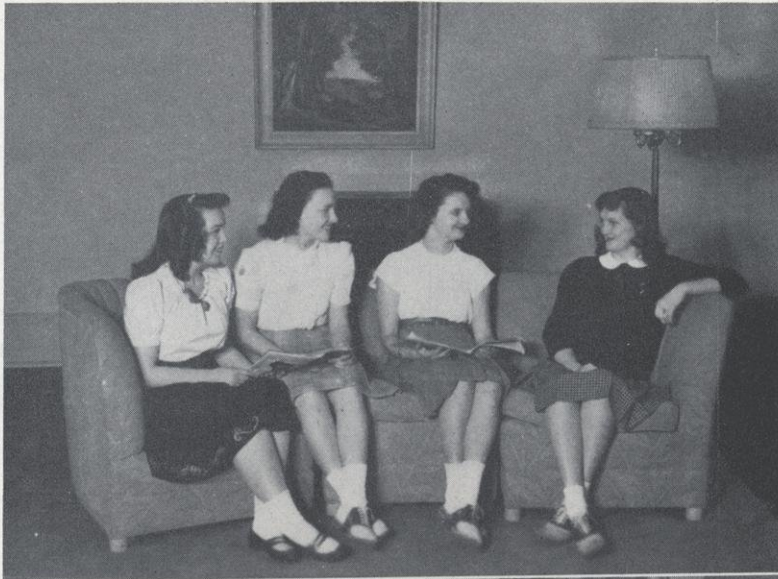
JAMES MOORE
AL PRESCOTT
JOHN STORZER
CHARLES THOMPSON
GORDON VINE
EUGENE WIRZ

Baseball

ARCHIE BROVOLD
DANIEL DEMULLING
HARLAN FELLOWS
ALBERT FRANKO

LESTER HORN
WALLACE MEHLBERG
JOHN STORZER

RICHARD TRACY
FRED UBBELOHDE
GORDON VINE
EUGENE WIRZ



Ace

Pedersen, Hygnstrom, Condit, Olson

OFFICERS

JANE OLSON - - - - - President
 AUDREY HYGSTROM - - - - - Secretary
 MARY ELLEN PEDERSEN - - - - - Treasurer
 JOYCE CONDIT - - - - - Publicity Chairman



Midgardians

Finstad, Payson, Whitaker, Baird

OFFICERS

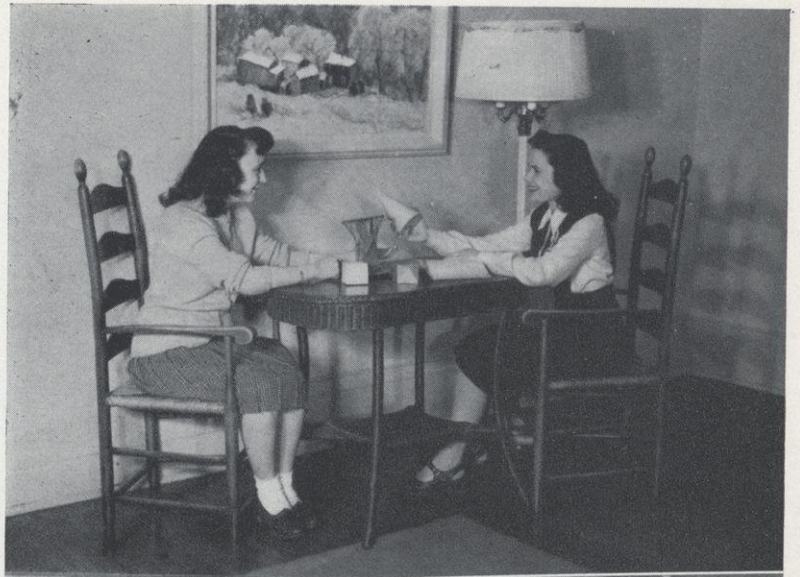
VERA LOUISE FINSTAD - - - - - President
 DELORES PAYSON - - - - - Vice-President
 MARGUERITE BAIRD - - - - - Secretary-Treasurer
 EDITH WHITAKER - - - - - Program

Mathematics Club

Rees, Estenson

MATHEMATICS CLUB

LOLA ESTENSON - REBECCA REES
Co-Chairmen

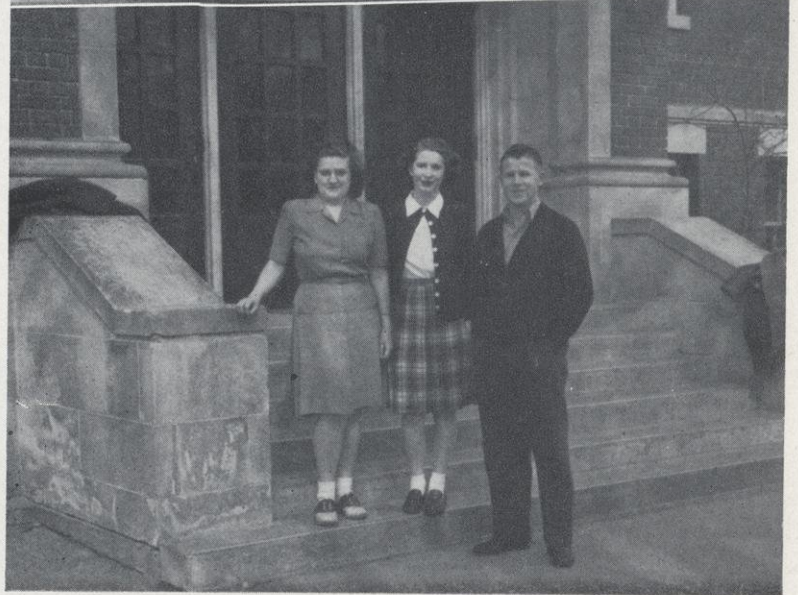


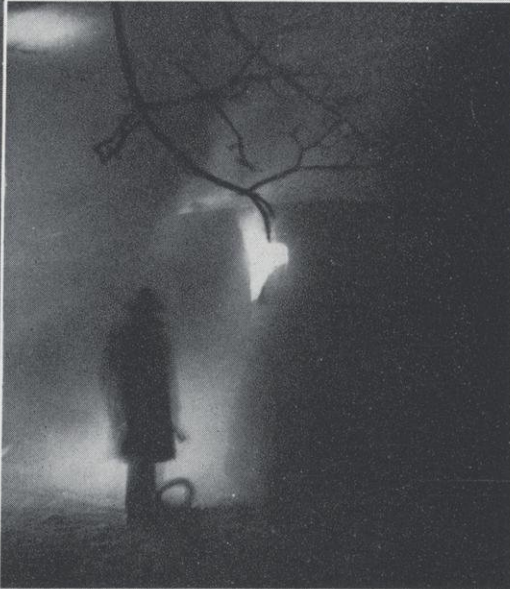
Language Club

Geraets, Forthun, DuBois

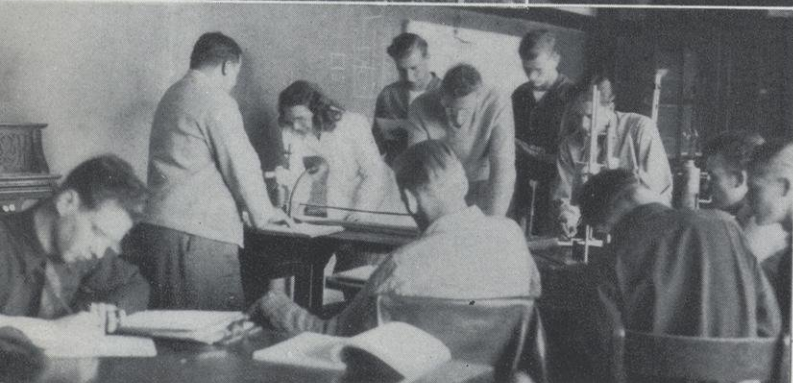
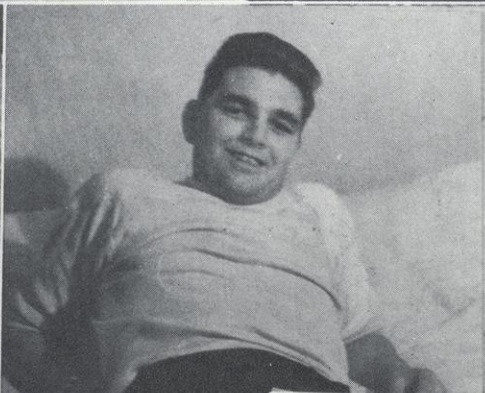
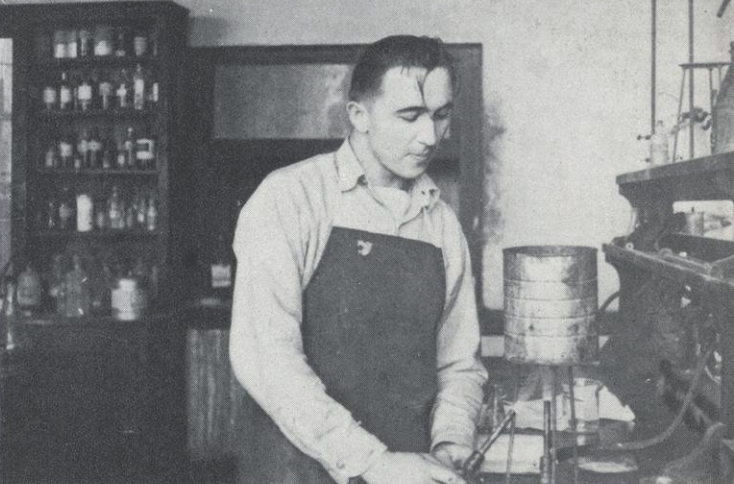
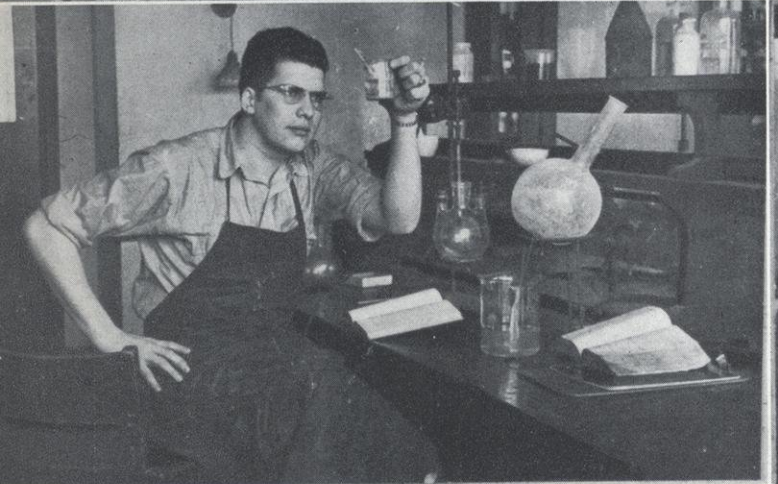
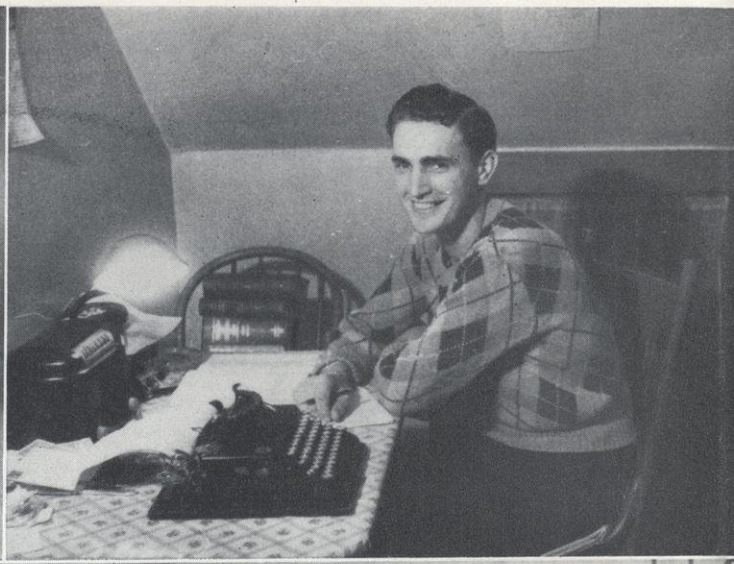
OFFICERS

MARY FORTHUN - - - - - President
LE ROY DU BOIS - - - - - Vice-President
LILLIAN GERAETS - - - Secretary-Treasurer

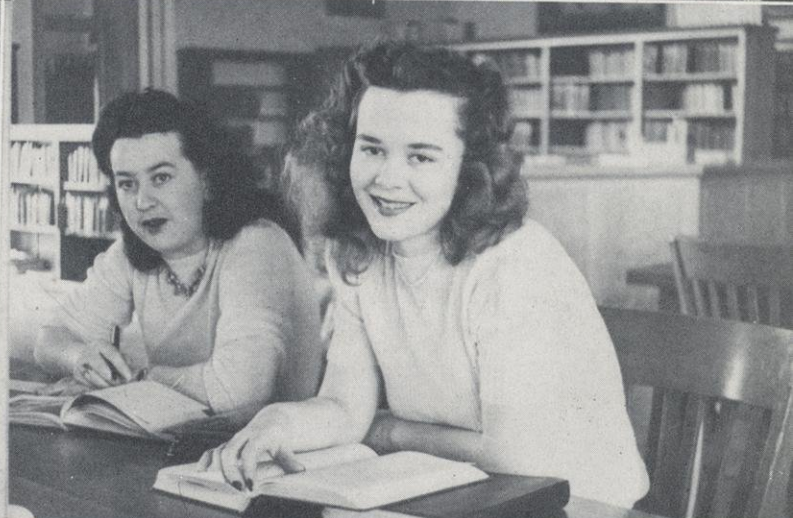
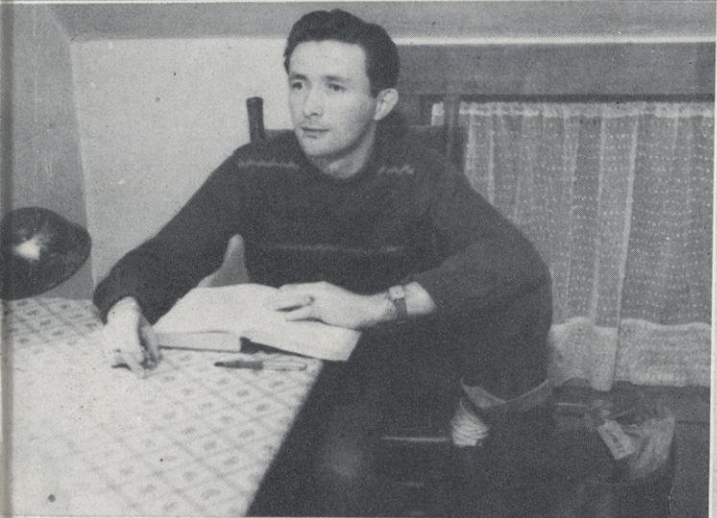




Eau Claire, Macalester, Stout, and River Falls at the Play Day luncheon. . . The Frye Christmas tree. . . Trailer No. 3 being gutted by fire. . . Shame on you Sigma girls for speaking to a "man" on initiation day! . . . Our British friend, Mary Falk.



Torchlight paraders at homecoming . . . We can think you're studying anyhow, Waters . . . Al in one of his industrious moods . . . Lowry really goes to it in the laboratory . . . "Dorothy" . . . Balfanz takes it easy . . . Schermer and Darlene with that "newly engaged" look . . . A busy moment in the physics lab . . . The joke's on us, kids!



Miss Fuller keeps a watchful eye on the library . . . Ah! Ah! In the library of all places! . . . Jack concentrates . . . "Kado" and Betty . . . Class in optics . . . YM-YW breakfast discussion group . . . Lila and Virg.

BUREAU OF ENGRAVING, INCORPORATED
MINNEAPOLIS, MINNESOTA

