

## **The daily cardinal. Vol. LXIX no. 61 December 12, 1958**

Madison, Wisconsin: New Daily Cardinal Corporation, December 12, 1958

<https://digital.library.wisc.edu/1711.dl/YSX6ORO7MD6K38E>

<http://rightsstatements.org/vocab/InC/1.0/>

The libraries provide public access to a wide range of material, including online exhibits, digitized collections, archival finding aids, our catalog, online articles, and a growing range of materials in many media.

When possible, we provide rights information in catalog records, finding aids, and other metadata that accompanies collections or items. However, it is always the user's obligation to evaluate copyright and rights issues in light of their own use.



Editorial probing Student Conduct and Appeals committee decision - see page two.

# The Daily Cardinal

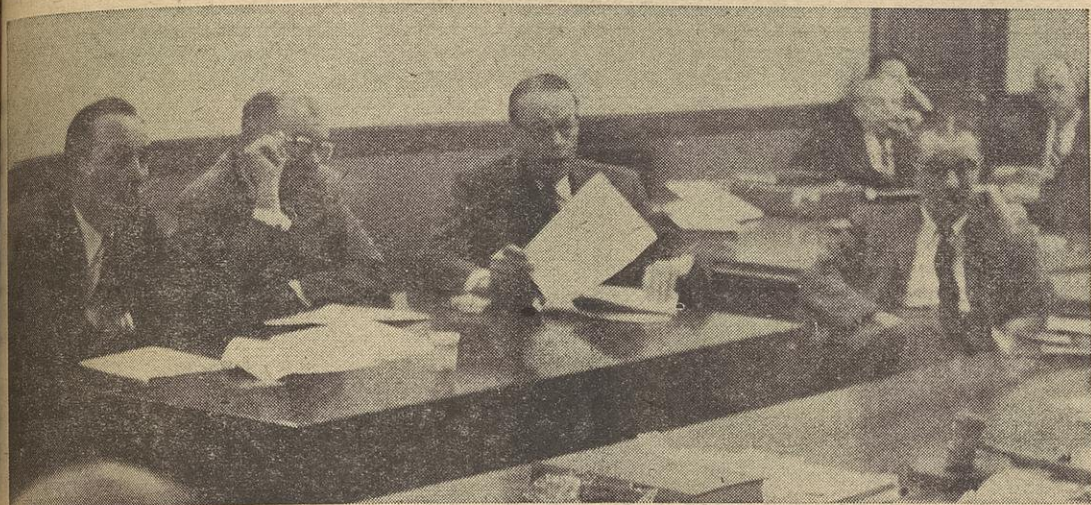
Complete Campus Coverage

I-M basketball results; varsity cagers' tune up for Notre Dame - see page seven.

VOL. LXIX, No. 61

University of Wisconsin, Madison, Wisconsin, Friday, December 12, 1958

5 CENTS PER COPY



**HEARING**—University and state college officials appeared before Gov.-Elect Gaylord Nelson to present the combined budgets proposed by the state Co-ordinating Committee for Higher Education. Pictured above, left to right, are Wilbur Renk, president of the university Board of Regents and the Coordinating committee; W.D. McIntyre, president of the state college regents; Conrad A. Elvehjem, university president; and Eugene Kleinpell of the Coordinating committee staff.

photo by John Gruber

## Nelson Has No Comment Yet . . .

## 'U' Heads Plead for Funds for 1959-61

Gov.-Elect Gaylord Nelson spent yesterday morning listening to university officials' pleas for a \$55,785,969 biennial budget, but he said in a **Daily Cardinal** interview last night that it is yet too early to make any comment on the budget as a whole.

In presenting the university budget, Regents' President Wilbur Renk and University President Conrad Elvehjem especially emphasized the need for increased pay for the faculty.

The proposed budget, as approved by the Regents and Coordinating Committee for Higher Education, provides for a \$7,525,265 in-

crease in faculty salaries over the amount appropriated for the 1957-58 biennium.

**RENK TOLD** the Democratic governor-elect that the university is "losing too many of our bright young men." Sixty-five members left the university during the past year, he said.

Elvehjem pointed to the difference between salaries of Wisconsin professors and those at other similar institutions. "When a member of our faculty receives and offer from an institution which is almost twice the salary received here, we are naturally concerned," he told Nelson. "We are concerned that we have not made the progress in salary adjustments comparable to that made by other Big Ten institutions."

In summarizing the budget, Elvehjem said the proposed budget is a realistic one—"the minimum necessary to carry on the programs and traditions of our university."

If there is no unexpected in-

creases during the biennium, Elvehjem said, the proposed budget will enable the university to strengthen its program of teaching and research.

**AT THE HEARING**, Nelson expressed concern about the request for an increase of \$846,298 in the appropriation for research. Research in the social sciences has been neglected for the sake of natural science research, Nelson asserted.

Vice President Fred Harrington told the governor-elect that the university is trying to correct this discrepancy.

Prof. William Young, Elvehjem's budgetary assistant, also urged Nelson to seriously consider increasing salaries of civil service (Continued on page 4)

## Theater Losses Trouble Union

Because some productions in Union theater this year have produced financial deficits, the Union Directorate last night agreed to a 25 cent increase in the price of all tickets to the Eleanor Roosevelt speech here next semester.

It is expected that some productions in the theater each semester will be unprofitable, Union news bureau chief Mary Harmon explained to the **Daily Cardinal** last night. Such losses are usually set off by profits from other shows presented by the Union music and theater committees.

This semester, the concerts by the Danish National orchestra met with considerable deficits. The musical production "Candide" also produced a loss. The Old Vic players' two Shakespeare dramas were expected to produce a \$2,000 to \$5,000 loss, so a university subsidy was obtained to provide for this. The Old Vic engagements were both sellouts.

The Union generally does not want to make a policy of increasing admission charges to some programs in order to pay for others, Miss Harmon said.

The change in the Eleanor Roosevelt price will involve reprinting all the tickets, according to Miss Harmon.

**NO GENERAL CHAIRMAN** for Winter Week has been named, the Directorate was told at its meeting, because no one has shown interest in accepting the position.

Subchairmen for Winter Week were chosen after interviews Monday and Wednesday, according to Miss Ruth Hibbard. She asked that students interested in this

appointment see her at the Hoofers quarters.

The Student Life and Interests Committee (SLIC) will decide today whether or not Winter Week should be scheduled as a campus activity. It would be Feb. 9 to 14.

**JACK DAVIS** reported on the recent conference of college and university unions at Valparaiso college, Indiana.

Davis said representatives from college unions stood in awe of "omnipotent" Wisconsin because of the large budget the Union operates on and the size of our campus population. He added that the "younger unions" plied the Wisconsin delegates with questions about the Wisconsin Union.

Delegates attending included both directorate and staff members: Davis; Joel Skornicka, Union president; Karen Holmberg, theater committee; Sally Gressman, social committee; Ann Flora, placement committee; Gene Schunk, tournaments committee; Roger Erickson, film committee; Claire Salop, publicity director; Rita Peterson, membership secretary; and Porter Butts, Union director.

**SOCIAL CHAIRMAN** Miss Gressman explained the purpose behind the 20-act "Talent Review" sponsored by Entertainers' Guild to be held Jan. 8 in Great hall. She said Union House representatives, social chairmen and the prom committee will be invited to review talent prospects who might be included in future entertainment plans.

Maureen Drummy, house com- (continued on page 4)

## Fifteen Go Into Badger Beauty Finals

The 15 coeds from among which six Badger Beauties will be chosen this afternoon have been named. Announcement of the winners will be made at 8 p.m. this evening.

The fifteen final contestants and their sponsors are:

Carol Harper, Gilman House; Wilma Nehysen and Joan Herreid, Alpha Chi Omega;

Karen Heassler, Alpha Gamma Delta;

Sue Hasekamp and Nancy Buskens, Delta Gamma;

Barbara Wiley, Delta Delta Delta;

Mary Ann Sinkler, Kappa Delta;

Diane Kohlmetz, Sue Huddleston, and Virginia Den Dooven, Kappa Kappa Gamma;

Carolyn Watson, Pi Beta Phi; Marilyn Smith, Sigma Chi; and Diane Rohlf, Cochrane house.

The fifteen will parade at 2:30 today in the Union before Mrs. Stewart Honeck, Bill Dyke, Elmer Meyer, Louise Marsten, Dexter Free, Robert W. Hougas, and Francis Hoffman.

The six Badger Beauties will each have a page in the Badger yearbook and will be the court of honor for Military ball.

## Chanukah Festival Brings Campus Jews Together

By BOB JACOBSON

The Festival of Lights, the most joyous of all Jewish holidays, is being celebrated on the campus, as well as in Jewish homes all over the world this week. The holiday of Chanukah commemorates the retaking of the temple by Judah Maccabee and his followers after the destruction of the temple of Jerusalem.

Back in 165 B.C. the Jews had to fight for their religious freedoms. At this time it was the Syrian King Antiochus Epiphanes who demanded the Jews to give up their own religion and worship his Greek gods.

After three years of fighting the victorious but weary Jewish army returned to Jerusalem only to find that their magnificent temple had been almost totally destroyed.

Upon reaching the temple, Judah and his men found only a small container of wax in which to light their way. This wax was only expected to last 24 hours, but by some miracle it lasted eight days, giving them time to refurnish the temple.

Since that time it has become customary in the Jewish faith to offer thanks by lighting one candle each night for eight nights (continued on page 8)

## Prom Queen Candidates Sparkle With Glamor . . .



**PROM QUEEN CANDIDATES**—Tiers of glamor greeted the Cardinal photographer last night when the 1959 Prom candidates gathered on the steps of the Union Reception room. The candidates are, (bottom row, 1 to r) Jan Watson, Marilyn Wasson, Pat Reybold, Rosemary Robertson; (middle row, 1 to r) Bonnie Stecher, Nancy Guyer, Rachel Gettle, Sue Sheaffer; (top row, 1 to r) Polly Pollock, Fay Wykhuis, Laura Primeau, and Judy Thielmann.

photo by Peter N. Gold

## Weather

Mostly sunny and cold today. Partly cloudy and continued cold tomorrow. High today, 10 to 15; low tonight, 0 to -5.





"... that Continual and Fearless Sifting and Winnowing by which alone the truth may be found ..."

The Daily Cardinal

## Comment

A PAGE OF OPINION

### Student Conduct...

#### A Case Study

Editorials, by definition, are to be subjective, and are to suggest some course of action for some segment of society.

**SOME, HOWEVER,** we feel can be written without any comment whatsoever, and students can make up their minds individually on the matter in question.

The following case came before the Student Conduct and Appeals committee not too long ago; since that committee will not release information on cases, the facts have been carefully gleaned from some of the participants involved.

Here is how the case progressed:

**THREE MALE GRADUATE** students, aged 23, 25, and 26, lived together in graduate student housing. All three were Jewish. One was engaged to a senior woman who did not live in university-controlled housing. She was 21.

The students made an agreement with the coed that she would cook their evening meals, and for this service, would not be charged for the food she ate. This she did, and she would always leave with her fiancé, early in the evening, around eight p.m.

The landlord of the students involved said he approved completely of the arrangement, because he knew that it was completely innocent.

**THE LANDLADY NEXT** door, however, witnessed several times the woman entering at about five p.m. According to the students and the landlord, she was "violently anti-Semitic": (she had told some of her roomers, "I would never have let you in MY house if I had known you were Jewish.")

She reported the students to the university, which commenced an investigation.

The students readily admitted that the arrangement existed; they related to the Conduct committee the entire story. (They refused to tell the committee the name of the woman student involved.)

The three men wrote their parents, and each's parents said that they could see nothing wrong with the situation. The mother of the coed was willing to appear and testify in their behalf, but it was decided to keep the coed out of the picture, for fear of repercussions.

**TWO OF THE MEN** were given a semester of disciplinary probation, and another went on for a shorter period. Two of the students were told they should have reported the situation to the dean, and were being punished for not doing so.

When one of the students appealed to the Appeals section of the committee, he filed a complete report of the incident, then heard nothing. One morning the committee tried to reach him by telephone, but couldn't get in touch with him. Consequently, his case was decided without his being there to defend himself.

Shortly afterwards, the students applied for permission for the cooking arrangement to continue. The university granted this wish.

The students remained on probation.

**THE RULE APPLIED** was from page 78 of the Student Handbook. It reads: "Men students (graduate and undergraduate) are prohibited from bringing unchaperoned young women (students or non-students) into residences for men students (graduate or undergraduate) or entertaining them there... This applies to student lodging houses, apartments, fraternities, dormitories, or other abodes in which men (students or non-students) live."

These are the facts of the case. We invite our readers to draw any conclusions they desire.

## The Daily Cardinal

FOUNDED APRIL 4, 1892

Official student newspaper of the University of Wisconsin, owned and controlled by the student body. Published Tuesday through Saturday mornings during the regular school session, by the New Daily Cardinal Corporation, Journalism hall, Madison. Printed at the Journalism School typography laboratory. Subscription rate—\$6.00 per year, \$3.50 per semester, by carrier or by mail. Single copies 5 cents each. Second-class postage paid at Madison, Wis.

Member, Inland Daily Press Association

Editorial and Business offices—Journalism School, North wing.

Office hours: Editorial 2 p.m.-12 p.m.; Business 8 a.m.-3:30 p.m.

**BUD BAUDER**

Editor-in-Chief

Bonnie Barstow

Managing Editor

**JAMES NORTON**

Business Manager

Dan Webster

Associate Editor

Bob Hadley

Advertising Mgr.

Joan Fischer ..... University Editor  
Jane Spevacek ..... Assistant University Editor  
Mary Lee Gruber, Peter N. Gold ..... Co-photography Editors  
Gene Schunk ..... Sports Editor  
Norm Ishizaki ..... Assistant Sports Editor  
Marion Ellis, Ann McAleer ..... Co-society Editors  
Nancy Hennig ..... Assistant Society Editor  
Carol Adamson ..... Activities Editor  
Kurt Brokaw ..... Movie Editor  
Francis Torgerson ..... Circulation Manager

### In The Mailbox...

## Comment on 'U' Basketball Prejudice, Duel, ROTC

#### CRITICIZES EDITORIAL

To the editor:

The Cardinal's proposal that Wisconsin sever relations with southern athletic teams is scarcely constructive. The boycott is a device which engenders hate from disagreement. It is most important that the North and South meet on as many common grounds as they can. Athletic competition is certainly an area from which both groups derive enjoyment, and it is, therefore, important to maintain this contract.

**HOWEVER, IT** is equally important that we practice what we preach. The athletic department did not sacrifice principle by contracting to play basketball in Texas this week.

Principle was sacrificed only by Wisconsin's not insisting upon integrated quarters for team members—outside the city if this was in conflict with local statutes. Responsibility for this very sorry incident must rest upon those making arrangements for the team's travel; however, the team members themselves must bear a measure of censure for submitting to these arrangements in order to avoid a controversial issue.

Judy Stiehm

#### ROTC DISCUSSED

To the editor:

I see that the anti-compulsory ROTC movement is in full swing again, and I feel that I can make a few constructive criticisms at this point. I have read the long awaited Student Senate report, and I did not see any really new approach to the subject. Therefore, I feel that I should put forth a few ideas of my own.

Recently I condemned the ROTC program for its failure to turn out what I termed "professional soldiers." I did not then have an idea as to improvement. However, I think I have come up with a solution which will be beneficial to students and military alike.

**AS YOU KNOW,** the department of Naval Science makes all its members follow a course which is virtually a basic engineering course, at the end of which they receive a Bachelor of Naval Science degree. I propose that the Army and Air Force set up similar programs, and that they include the same requirements and inducements as the Naval Science department has set up.

The advantages of such a program are obvious. The cadets could receive training in the specialized fields needed for the modern Army or Air Force, and since the program would be small and entrance to it voluntary and highly competitive, not only would the men in this group be superior, but their morale and esprit de corps would be higher.

Therefore, I suggest that the Military and Air Science departments give this proposal serious consideration and if it meets with their approval, as I am certain that it will, that they forward this proposal to the Regents, the Legislature, and to their superiors in Washington.

**ONE THING FURTHER.** Many people are wondering at my motives. I have nothing to gain from this. First of all, because I am 4-F I am permanently excused from ROTC. Secondly, I doubt if I will be here next year. My only desire is to see that the university turns out the best possible officers.

It is not to our credit if we commission ill-trained and ill-

prepared officers. That is why I suggest that the university consider my proposal rather than the watered-down plan put forth by a group of students whose sole desire is to get glory by being instrumental in ending compulsory military training. As an example of this they are refusing to cooperate with a church group and another body of interested students. Their reasons? It will cause campus antagonism.

**HOW TRANSPARENT** can they get? Don't they mean that it will detract from their lion's share of the glory? I don't mean to run down their report, but I do want them to realize that their childish action can only hurt their cause, in as much as the radical element on campus will act alone and end all chance of repeal.

If the student body, both pro- and anti-ROTC unities in support of a constructive plan, much more can be accomplished.

James M. O'Connell

**ED NOTE:** We agree with you that the WSA proposal is not well prepared, and we have intended to comment on that in later editorials. However, your statement that WSA refuses to cooperate with the outside groups is ill-founded, for it intends to do so. Your indictment of their motives can be questioned on one score—the actual chairman of the committee did not want his name mentioned in any publicity.

The editorial page of the Cardinal is open for all students to express their opinions. Letters must be signed, but the writer's name will be withheld on request.

Letters are the individual opinion of the writer. They do not necessarily represent the opinion of the Daily Cardinal.

#### CHALLENGE WHEELER TO CHUG-A-LUG CONTEST

To the editor:

We have read with interest the gallant, dashing Richard S. Wheeler's obviously tremendous

article on dueling in the Tuesday edition of the Daily Cardinal. Because of the recognized importance of this obviously chivalrous subject, we feel that it should be revived here on this obviously backward campus. We can think of no one better to initiate the romantic undertaking than the honorable Mr. Wheeler.

**SO THE MEN** of Gilman House hereby officially challenge said Wheeler to an alcoholic consumption duel (known to all commoners as chug-a-lugging) to be held within the halls of the Holt hall recreation room, on the night of December the twelfth at 10 p.m.

We expect that Mr. Wheeler will appear in a tux and tails to maintain his obvious reputation



of being a fashionable dresser. To comply with formal dueling rules, a second (to wipe the spilled beer off your chin, of course) is needed. We will supply the drinks and glasses.

See you there, R.S. Or will we?

Gilman House

**ED NOTE:** We doubt that even a man of Wheeler's redoubtable ability could defeat 75 men in a drinking contest. You must admit your numbers give you an unfair advantage, even if your capacities might not.

#### BRIEF COMMENT ON WHEELER'S FORTHCOMING

To the editor:

Why safety precautions?

name withheld

## LITTLE MAN ON CAMPUS



"ARE WE AROUND TO GRADING FINALS AGAIN PROFESSOR SNARF?"







## 'Beauty of the Day'



**BEAUTY**—Today's beauty is Irene Friedman, a junior in journalism. She is from New York and lives at Carroll Hall.  
photo by Peter N. Gold

### Budget . . .

(continued from page 1)

employees of the university. The proposed budget calls for a \$517,627 increase in civil service salaries for the years.

**THE STATE** has been falling behind in upkeep of the university in the past two years, Young said, and should grant the university's requests for maintenance increases of \$756,807 for the biennium.

The state college budget requests were heard yesterday afternoon.

Nelson told the **Cardinal** last night that he did not know how long it will take him to come to a decision on the budget. He has the budgets for all the departments of the state to consider, he explained. The university's budget, including the budgets for university hospitals and auxiliary enterprises of the university, is 34 pages of tables, charts, and explanations.

### Directorate . . .

(continued from page 1)

mittee chairman, said her committee had voted 25-1 to keep the photo machine in the Union. She pointed out that many students were using the machine.

Miss Drummy also told Directorate the theme of the Union Open House, Feb. 7, will be "Fire and Ice."

### DOCTORS TO LEAVE

Two Enzyme Institute I staff members at the university, Drs. Frederick L. Crane and Salih Wakil, will be leaving during the next year to begin new assignments.

Crane has accepted a staff position with the Clayton foundation at the University of Texas beginning in February.

Wakil will join the staff of the biochemistry department at Duke university next September.

## The Cardinal Goes Court-ing

DECEMBER 5, 1958

### STUDENT COURT REPORT

- Dixon, Robert - Firezone A-22, non-registration - \$6.00
- Koehler, James - Non-reg. - \$5.00
- Fleming, Tom - No permit A-1, Driving on campus, Non-reg. - \$5.00
- Hickman, Don - Overtime parking loading zone - Dismissed
- Palm, William - No permit T-24 & Mech. Engr., D.O.C., and Non-reg. - \$3.00
- Kotnik, Ronald - No permit A-11, - \$1.00
- Versace, Richard P. - No permit Naval Armory, Non-reg. - \$3.00
- Stockner, Priscilla - Wrong area A-37, Non-reg. - \$5.00
- Bray, Robert J. - D.O.C., Non-reg. - \$4.00
- Lathers, Mary E. - No permit A-11, Non-reg. - \$6.00
- Luttichau, Fleming - No permit A-39, Non-reg. - \$2.00

DECEMBER 9, 1958

- Marks, Richard - No parking A-1 - Guilty, no fine
- Seidel, John - Fire zone North of Biochemistry, Non-reg. - \$5.00
- Mohs, Thomas - No Pkg. near Mining bldg., Non-reg. - \$5.50
- Torgerson, Anders - No parking north side Observatory drive., Non-reg. - \$8.00
- Murray, Robert - No parking A-1 - Guilty, no fine
- Read, Wayne - No permit west side E.E. Bldg., D.O.C., Non-reg. - \$7.00
- Kellor, Karl - No parking A-1, Non-reg. - \$6.00
- Wishau, Kenneth - No permit A-18, DOC - \$2.00
- Maxwell, Donald - No permit A-10, Non-reg. - \$1.00

## Classified Ads

### student

.04 per word 1st day  
.02 each day thereafter

### commercial

.05 per word 1st day  
.025 each day thereafter  
Above rates are net. No commissions or discounts on classified ads.

### FOR RENT

**MALE STUDENTS—1 SPACE IN** 3-room suite for graduate student, 1726 Hoyt Street. Single and double room, 625 N. Frances. CE 8-1742. xxx

**ONE-HALF DOUBLE — DAVID** Schreiner Co-op House. Good grades required. Wisconsin students given preference. Contact Mrs. Marshall, AL 5-9501. 3x13

### HELP WANTED

**SKI AND WORK . . . FULL TIME** waitress, sect'y, baby sitter, kitchen employes, ski patrol. Ski, skate, swim and work this winter. George Nelson, Jr., Lutsen Resort, Lutsen, Minn. 3x16

### FOR SALE

**MADISON'S ONLY NECK TIE** mart. Thousands of ties to choose from—49c, 79c, \$1, \$1.39. Men's and boy's matching gift sets of ties, socks, belts. Pure silk repp in slim shapes, ivy league, slim knits and bow ties. Next to McDonalds. Ample parking. 2205 S. Park. AL 6-8147. Open 11 a.m. to 9 p.m. 16x19

**GUITAR — GRETSCH, USED 1** month. Best offer. AL 7-2486 after 7 p.m. Roger Platkin, 223 W. Gilman. xxx

### RESTAURANTS

**MEET THE DAVID PETERSONS** now operating Mac's Grill, 758 University. Coffee, 10c, refills 5c. Short orders and dinners. 7x13

### LOST

**BUTEX CALENDAR WATCH ON** third floor Siebecker, Sat., Dec. 6. If found, call K. Redell, U. 4691. Reward. 5x16

• Kneuse, Jack - Non-reg. - \$3.00

**PARKING** is restricted from 7 a.m. to 10 p.m. seven days a week in the following campus parking lots:

- All of the lot behind Science hall
- All of the lot behind Chemistry building

• East half of lot behind Education building

• Nine marked spaces on south side of lot at Bascom hall

All motor vehicles operated by students in Madison must be registered with the Department of Protection and Security or Student Court.

## CAR COATS—as you like them—

Here are two from our large Christmas Selections



Gift Wrapping FREE

Center: Pile lined corduroy car coat in black or taupe. The small, shawl collar stands up for wind protection, 10 to 18. 25<sup>00</sup>

Arthur Jay element cloth topper with orlon pile lining. Concealed hood collar. Colors are natural, green or blue, 9 to 15. 25<sup>00</sup>

**W.J. Rendall's**

SQUARE AT STATE

**FROM THE BOLD BLUSHING STAGE HIT OF SEX IN THE SUBURBS!**

M-G-M Presents  
A JOSEPH FIELDS PRODUCTION  
Starring

**DORIS DAY RICHARD WIDMARK**

**THE TUNNEL OF LOVE**

2nd Feature You Live Every Moment of it! "Dunkirk"

Co-starring **GIG YOUNG-GIA SCALA**

In **Cinemascope**

**ORPHEUM NOW**



## Christmas Formals Featured Tonight

Women will entertain their dates this evening at sorority and dormitory Christmas formals. The snow and cool temperatures will set a winter atmosphere for the many formal parties and dinner dances.

The Kappa Alpha Thetas will entertain their dates at a dinner dance to be held at the Towne Club. The Ross band will play and cribbage boards will be given as favors.

"Winter Wonderland" is the theme of the Delta Zeta formal, which will be preceded by dinner at the Top Hat. The "DZ Man" will be crowned during intermission at the dance.

The West Side Businessmen's Club will be the scene of the Kappa Kappa Gamma dinner and formal. Green wreaths and snow flakes will carry out the theme "Snow Ball." Cigarette lighters will be the favors.

Eva Marie Saint, a university Delta Gamma alumna will be at her sorority's Christmas formal, said the Delta Gammas. Black Jack O'Finos band will play for the dance which will follow dinner at the Cuba Club. Entertainer at intermission is Butch Kellogg.

A bottle opener with a shrunken head and the sorority crest will be given to the Sigma Delta Tau dates. This is to be their first annual winter pledge formal. Jaff Marcus' band will provide the music for dancing and George Harris will sing. The theme "The Belles Are Singing" will be acted out in the pledge skit.

An Alpha Xi "He" will be crowned and presented with a trophy at the Alpha Xi Delta formal, "Snowbound." After dining at the Ivy Inn, they'll dance to the Playboys Band in the house decorated in blue and white tones.

Alpha Gamma Delta's dinner dance is at the East Side Business Men's Club and features Dan Garson's orchestra. Favors are bridge cards in a leather case decorated with the Alpha Gam crest. At the dance the sorority will announce their choice of their "Alpha-Gam man."

Football binoculars crested with Gamma Phi Beta's Greek letters will be favors at their formal to be held at the West Side Golf Course Clubhouse.

Alpha Phi's formal dinner will be at the Hoffman House. The house decorations are a courtesy

## See EUROPE for LESS on ALL-STUDENT Trip

Enjoy the finest cultural, historical and scenic spots in Europe for less on an American Youth Abroad trip. Travel in a small group with friends and other U. S. college students. Book early to insure best space. Only small deposit needed now.

### Sample trips:

W. EUROPE . . . 11 countries, 54 days, \$915 all-expense.

W. EUROPE plus SPAIN . . . 11 countries, 58 days, \$1095 all-expense.

W. EUROPE plus SCANDINAVIA . . . 15 countries, 69 days, \$1245 all-expense.

Come in to Koepcke Travel Bureau for FREE information on these and many other EUROPE bargains. Let us help you make all travel reservations here and abroad . . . by air, ship or bus . . . at no extra charge!

### Call today:

Koepcke Travel Bureau  
22 S. Carroll  
Phone: AL 6-6871

## The Daily Cardinal

# Society

of the pledges; favors are Alpha Phi initialed stud boxes. The "Alpha Phi man" will be announced at the dance.

Santa Claus himself will deliver Kappa Delta's favors. In addition the girls' dates will find their Christmas stockings hanging on the fireplace. After dinner at Troia's, they will dance in a "Snowflake Fantasy," to the music of the Twilights. Huge snowflakes will be suspended above the dancing area and silver and red garlands will make a "fantastic" false ceiling.

The Delta Delta Delta dinner dance will be held at the Loraine Hotel this evening. Shoe shine kits with the sorority's crest engraved on them will be given the women's dates.

Gambler's paradise is what Carroll Hall will be with large dice and cards carrying out the "Carroll Cabaret" theme. Refreshments will be served from a roulette wheel table. Bob Leyson's orchestra as well as a skit will provide the entertainment.


Sy Gordon's orchestra will provide the dance music for Villa Maria's "Candlelight Christmas" formal. "Prelude in Blue" is the

theme of Barnard Hall's formal which will be held at the University YMCA.

**RIDE  
BADGER COACHES**

*Fast Express*

**TO  
MILWAUKEE**



**Via HIGHWAY 30**

**Leaves Madison  
And Milwaukee Daily**

7:30 AM 10:00 AM 12:30 PM  
3:00 PM 5:30 PM 8:00 PM  
10:30 PM—Fri., Sat., Sun.  
& Holidays only

One Way \$1.70 plus tax  
Round Trip \$3.10 plus tax

**BADGER COACHES, Inc.**

UNION STATION  
PHONE AL 5-6771

A DOOR—Pretty as a Christmas present is this door in Slichter Hall. The women must have difficulties entering and leaving their room with that tag attached to their door. Each floor in the hall chooses a theme and each door is decorated accordingly. A prize is then awarded to the floor with the most attractive doors. photo by Ritchie Falk

## Decorating And Caroling Create Yuletide Mood

Parties are as plentiful as snow drifts this evening. Trees will be trimmed, houses decorated, and carols sung in preparation for the big day which is now less than two weeks away.

Beer suppers are planned by Pi Lambda Phi and Chi Omega, and Sigma Nu and Tower View. Later in the evening the Sigma Nus will have a Christmas decorating party.

A sleigh ride and dance at Nob Hill will entertain the women of Victoria House and their dates. Theta Delta Chi will celebrate a "Pledge New Year's." Delta Sigma Pi will decorate their house for their formal tomorrow night. Contrary to the prevailing spirit

at this time of year, Hampton House will hold a "Hell" party. Babcock and Wilson Houses will go carolling at the university hospitals.

"The Christmas Bedtime Story" will be told at the Frankenburger House party. Reminiscent of German tradition, Gilman House will celebrate around "The Old Tannenbaum."

"Mistletoe Madness" is the theme selected by Chamberlin House for their party. Guess what their decorations will be? Siebecker House entitles their party, "Christmas Time."

Informal house parties are also being held by Showerman and High Houses.

## Religion On Campus

### ST. FRANCIS' HOUSE

1001 University Ave.  
Sun., 8:00 a.m.—Holy Communion.  
10:00—Morning Prayer.  
10:30—Sung Eucharist and Sermon.  
5:30 p.m.—Candle Light Service  
6:00 p.m.—Christmas Dinner.  
Speaker—The Rt. Rev. William Brady, Bishop of Fond du Lac.

### UNITED STUDENT FELLOWSHIP

303 Lathrop Street  
Sun., 9:15—Bible Class  
5:00—Cost Supper  
6:00—Christmas play, "The Play of The Shepherds."  
7:00—Worship service  
Wed., 7:00—Mid-East study group meets at USF House.

### CHRISTIAN SCIENCE ORGANIZATION

315 N. Mills St.  
Reading Rooms are open 8:30 a.m. to 4:30 p.m. every week-day.  
Tuesday Evening Testimony Meetings are at 7:30. Students, Faculty, Alumni, and Guests are welcome.

### HILLEL FOUNDATION

611 Langdon St.  
Fri., 5:45 p.m.—Sabbath Dinner  
7:45 p.m.—Sabbath Services.  
8:45 p.m.—Oneg Shabbat. Special Hanukkah Program. Reading of dialogue from "Adam and Eve," adapted by Irving Worts from Mark Twain. Open to all.  
Sun.—Grad Club Brunch cancelled.  
5:29 p.m.—Cost Supper  
6:30 p.m.—Hillel Arts Festival  
8:30 p.m.—Mixer.

### CALVARY LUTHERAN CHAPEL & STUDENT CENTER

(Mo. & Wis. Synods)  
713 State Street  
Fri., 9:00 p.m.—Calvary Choir on WHA-TV  
Sat., 4:30 p.m.—Communion Announcements.  
Sun., 9:00, 10:15 & 11:30 Services—all with Communion.  
5:30 p.m.—Fellowship Supper and Program—Religious Drama, "A Child Is Born"  
Tues., 7:00 a.m.—Matins  
Thurs., 6:45 & 9:00 p.m.—Christmas Candlelight Vespers.

### CHRISTIAN & MISSIONARY ALLIANCE

401 N. Blackhawk  
Sun., 9:30 a.m.—Sunday School.  
10:30 a.m.—Morning Worship.  
7:00 p.m.—Evening Gospel Service.  
Thurs., 7:30 p.m.—Bible Study and fellowship.

### LUTHERAN STUDENT CENTER

(National Lutheran Council)  
228 Langdon St.  
Fri., 6:30 — Grad Club Dinner.  
"The Non-Lutheran Reformers of the Reformation," the Rev. Robert H. Hamill from the Wesley Methodist Foundation.  
8:00 p.m.—Hanging of the Greens," party.  
Sun., 5:15 p.m.—Sunday Evening Club. Supper.  
7:30 p.m.—Advent Vespers at Bethel Lutheran Church.  
1. Installation of Pastor Myron M. Teske.  
2. Lutheran Student Choir.  
3. Pastor Glenn W. Bragstad.  
Wed., 7:00 p.m.—Caroling Party and afterwards an Open House at Bragstad Parsonage

### WESLEY METHODIST FOUNDATION

1127 Univ. Ave.  
Sun., 9:30 & 11 a.m.—Morning Worship. Rev. Robert H. Hamill preaching.  
8:00—Annual Christmas Concert  
10:30 a.m.—Coffee Hour for grad students.  
5:30 p.m.—Supper 50c.  
Mon., 4:00—Non-credit course in religion "Gods of the Campus." Instructor Rev. Robert H. Hamill.  
Mon., 7:00—Leave Wesley to go caroling  
Wed., 7:00—Caroling  
9:45—Vespers  
Thurs., 4:00—Coffee Hour  
7:00—Caroling

### PRES HOUSE

731 State St.  
Sun., 9:45 & 11:15 a.m.—Worship Services. Holy Communion.  
10:45 a.m.—Coffee Hour.  
5:45 p.m.—Supper  
7:00 p.m.—Oratorical Concert  
Wed., 12:00 p.m.—Study groups.  
7:00 p.m.—Vespers.  
Thurs., 12:00 p.m.—Study groups.  
Fri., 4:00 p.m.—Snack Hour.

## THE VILLA

Featuring:

## VITO SALERNO

FRIDAY AND SATURDAY NITES  
No Cover Charge or Admission Charge

Coming:

## HAYDEM THOMPSON

and his Rock 'n Roll Combo

Sun., Dec. 14

## THE VILLA

2330 S. Park Street.

AL 7-3048



## Chairman Reveals Names Of Humorology Committees

Chairmen and plans for the 1959 Humorology, which will run March 19, 20 and 21 have been announced by Bill Immerman, general chairman.

They are Sylvia Severson, kickline; Richard Kullen, productions; David Adashek, programs; Peggy Duntley and Jerry Rudman, publicity-promotions; Ginny Richards, judging; Lynn Barack, executive secretary; Steve Porter, treasurer; Ken Thompson, tickets; Gale Pfund, arrangements; and Judy Peiffer, interacts.

In order that more living units may participate in Humorology, the chairmen resolved a new policy at a recent meeting. This will aid small houses of 30 members or less to participate. It states:

**"RESOLVED** that any men's living unit may combine with any other men's living unit and any women's living unit may combine with any other women's living unit provided that the aggregate membership does not exceed 60 members.

"However, this does not apply to dorms. In the case of dorms, any house may combine with any other house regardless of size. Any one house regardless of size may also combine with any independent living unit or sorority or fraternity as long as the membership of the independent living

unit or sorority or fraternity does not exceed 30."

**IMMERMAN SAID** that any living unit which has not already entered Humorology still has time to do so.

Kickline tryouts will be held Jan. 8 from 4 to 5:30 and 7 to 9 p.m.

All show scripts will be due Feb. 13. First tryouts for all skits will be held Feb. 25 and 26. Final tryouts will be March 4. Both tryouts will be in Bascom Hall auditorium.

Tryouts for interacts will be announced later.

As last year, the show is produced to earn money for Madison's Kiddie Camp. Formerly for children stricken with rheumatic fever, the camp was opened in 1957 as a day school for mentally retarded children.

### COOP BOARD

Interviews will be held by the WSA personnel department for two of the three student positions on the University Co-op Board of Control today in the Union from 3:30 to 5:30.

This board controls the policies that govern the Co-op, particularly those concerned with its budget.

Law students or those interested in business are encouraged to interview.

## Curly On Bridge

In today's hand I shall illustrate the use of the safety play. The safety play is very much what the name indicates, a means of protection against a bad break.

It is a method of play which is calculated to hold your losses in a particular suit within certain limits in the event of unforeseen distribution. Safety plays many times deliberately sacrifice one trick in order to run the least possible risk of losing two tricks.

In the hand below, South is the declarer at the contract of six Hearts. West leads the Jack of Diamonds which is won with North's queen.

As you can see, there are no other losses in the side suits. You will, therefore, succeed in your contract if you lose only one heart trick. If you play properly, you will be successful no matter how the cards are distributed.

What is the correct play? If you should first play the King from the North hand, you will meet with defeat if East shows out. If you lead the Ace from the

South hand it will be disastrous if West shows out.

When a hand seems as easy as this, stop and say, "what can possibly go wrong?" The answer is, of course, all four trumps in one hand. The play must be in such a manner as to find out which one is void.

The proper play is a low card from either hand. Let us assume that the lead is in the North hand. The deuce should be played first. If East shows out, the Ace will win and a small card led towards the King-nine will hold West to only one trick.

If East should play the three on the deuce, then South will play the ten. This will take care of the situation if West shows out. If West wins the trick, your troubles are over, because the rest of the trumps must fall.

Remember, the only thing you feared was all four trump in one hand. It must also be remembered that you were not trying to make all the tricks. You wanted to be certain not to lose two. If it turns out that each of the opponents had two Hearts you will

spend a trick needlessly, but that is a small premium to pay for an insurance policy.

**DAILY QUESTION:** As dealer, you hold: S-542, H-KQ53, D-AQ8, C-A94. What do you say? (answer tomorrow)

**ANSWER** to yesterday's question: Double. This asks partner to bid his best suit. You will be happy if partner bids hearts or diamonds and you will be content even if he responds in clubs.

North		East	
S. A J 5		S. 10 9 8 7	
H. K 9 7 2		H. Q J 8 3	
D. Q 2		D. 5 4	
C. A K 7 4		C. J 9 2	
South			
S. K Q 4		H. A 10 6 5 4	
H. A 10 6 5 4		D. A K 3	
D. A K 3		C. Q 10	

*The Maison d'Or ...*  
for your nite on the town!  
The place with a party air ...  
**Paris Party from 9 to 1,**  
**Friday, December 12**  
**FEATURING ... Bob Lindeman at**  
the Piano playing your favorite  
requests from Beethoven to  
Progressive Jazz.

**Lombardo's Piano Lounge**  
119 East Main Street

**STRAND** FAREWELL ENGAGEMENT

★ ★ ★ ★

Motion Picture Magic...  
*As You've Never Seen It Before!!!*

**WALT DISNEY'S FANTASIA**  
with **STOKOWSKI**

Wide SuperScope Screen!  
Full Stereophonic Sound!  
color by Technicolor!

NOW IN FULL STEREO SOUND!

Five Shows Daily: 1-3-10-5-20-7-30-9-45

The Simple Christian Story ... Portrayed With Reverence, Power, and Great Beauty!

**KING of KINGS**  
By Jeanie Macpherson  
NOW PLAYING

**Majestic**  
FINEST IN ART, CLASSIC AND FOREIGN FILMS!

**A hammer is to pound—but without the**  
**you miss the whole idea of a**

**A cigarette is to smoke—but without flavor**  
**you miss the whole idea of smoking!**

When it comes to flavor...

**IT'S WHAT'S UP FRONT THAT COUNTS**

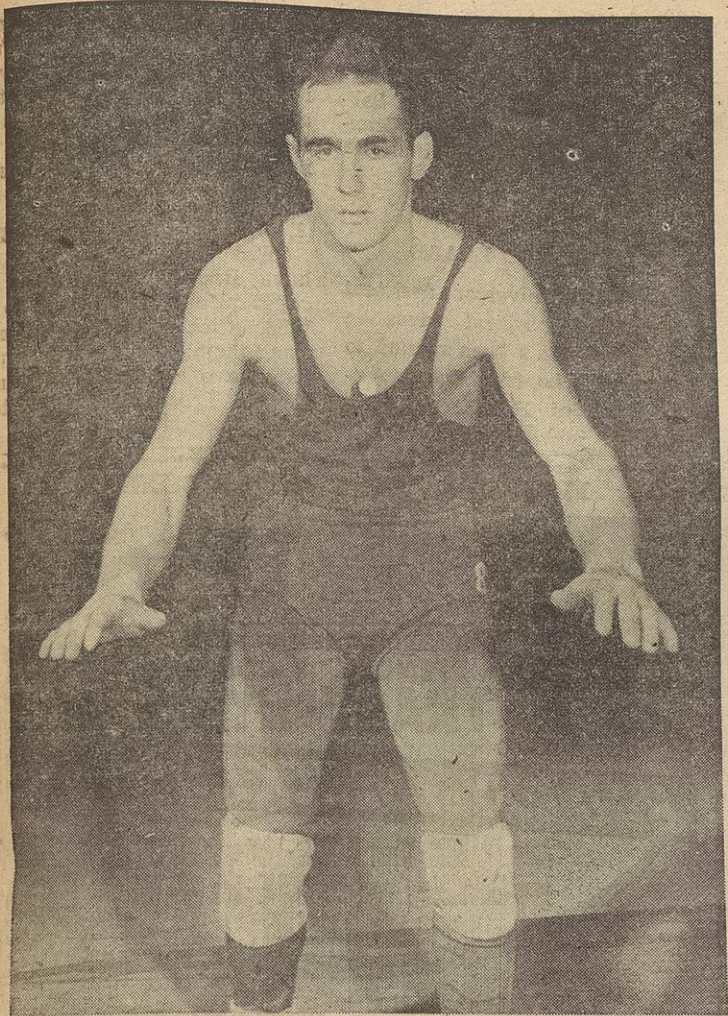
Up front in Winston is **FILTER-BLEND** that's why **WINSTON TASTES GOOD** like a cigarette should

IF IT HASN'T GOT IT HERE IT HASN'T GOT IT!

**Winston**

R. J. REYNOLDS TOBACCO CO., WINSTON-SALEM, N. C.





**BILL POPP**, the Badger wrestling captain, is in a pose the opponents would like to see him in more often. Most of the time they will find him on the winning end of a hold. Popp will wrestle in the 147 pound division this Saturday in the Intercollegiate Wrestling Meet. Last year he won the individual championship in the 167 class in the meet; he has since lost weight and will be in the lower weight division.

## Wildcats Break No Scoring Mark

Northwestern climaxed their early season campaigning by defeating highly rated Notre Dame, 68 to 63, in a see-saw game at South Bend. Prior to the win over the Irish, Northwestern had beaten Western Michigan, 102 to 60, and Maryland, defending Atlantic Coast conference champions, 66 to 62.

The veteran Wildcat quintet set a fast scoring pace in its opening games by averaging 76.6 points per game. In rolling up 102 points against Western Michigan, Northwestern set a new school mark, breaking the old mark of 100 points set against Indiana in 1954.

Northwestern displayed a high degree of field goal shooting in fashioning its undefeated record. The Wildcats scored 92 field goals out of 215 shots for a .427 shooting percentage which is well ahead of last year's mark of .396.

For the third straight year,

Northwestern's attack is keyed around Joe Ruklick, 6-9 center, who has scored 81 points in three games for a 27 point average per game.

The rangy hook shot specialist hit his top performance against Notre Dame when he scored 30 points on 11 field goals and eight free throws. In three games, Ruklick has scored 32 field goals in 64 shots for a remarkable .500 per cent.

## Winslow Breezes By Noyes; Ochsner Over Tarrant, 24-21

Yesterday afternoon in the 4:30 rounds of contests of intramural basketball, Winslow breezed by the Noyes five by a 38-17 score. At the same time Ochsner was bypassing Tarrant 24-21.

In the Wednesday night action Turner Back took a close, low

scoring contest from Chamberlain Back, 15-13. There were only two fouls for each team in the game. Turner pumped in only four points in the second half, but Chamberlain was only able to chalk in two.

Conover Court had a little easier time with Jones Court and handed them a 41-22 decision. They had a commanding ten point lead at the intermission.

Conover Back also breezed by the Swenson Back five 28-8. In another close contest LaFollette managed to squeak by a determined Siebecker outfit by the close two point margin of 17-15.

Gilman Back put on a 20 point burst in the first half and beat the Showerman Back team 29-22. Gilman Back held a 20-13 lead in the first half action.

Jones Back just had too much for Mack Back and edged Mack Back 26-23. The score at the end of the first half was a tight 16-15.

Finally to round out the night's action on the hardwood was a forfeit win by the Murray Menaces over the Stump Jumpers. Also in the independent action was another forfeit win by Park Street A. C. over the Little Bears.

Intramural action for the winter season is now in full swing with all three divisions participat-

### GAMES TODAY

at 4:30

Frankensteiners vs. Weasels

St. Paul's Chapel vs. Ghosts

Sigma Phi vs. Sigma Alpha Epsilon

ing in basketball and bowling with the fraternity division taking on badminton in addition.

### Typewriter Broke Again

Need a rental?

Consider Buying?

Call

**Madison Typewriter Co.**

627 State St. Phone 6-4352

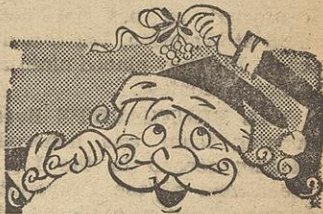
serving the campus since 1910

## Girls!

For That Man,

*Santa*

*Suggests...*



STATE ST. CO-OP



## ATTENTION:

You Strapping College Youths

• wanna tour

Chicago and the

Midwest next spring?

# HARESFOOT TRYOUTS

Mon., Tues., Wed.... Dec. 15, 16, 17

at the Union from 7-9 p.m.

• CHECK UNION BULLETIN BOARDS FOR TRYOUT ROOM

*This Year's Show:*

"Du Barry Was A Lady"

"Very Sharp . . . Best Ever . . ."

Time Magazine



## 249% More Shock Resistant Than Ash Skis

Northlands are strong . . . made of laminated 100% Hickory, a wood grown only in the U.S.A.

The U.S. Forest Service Lab ranks Hickory "...exceedingly high in shock resistance with a combination of strength, toughness, hardness, and stiffness not found in ANY OTHER COMMERCIAL WOOD." For example: The shock resistance index of Hickory is 308 versus 124 for Ash.\*

Northlands are smooth and steady on any snow . . . turns are easier with no chatter or drift. You'll be proud to own colorful Northland Skis.

\*U.S. Forest Service Bulletin "Hickory" & Bull. 1169



Write for free catalog and "How to Ski" book. Dept. 300A, 2325 Endicott St., St. Paul 14, Minn.

headquarters for  
NORTHLAND SKIS  
PETRIE SPORTING GOODS  
644 State St.

## GOODMAN'S DIAMOND VALUES



Sculptured Beauty

\$169<sup>75</sup>

Both Rings

JUST ONE DOLLAR WILL HOLD THE RING SHE WANTS TIL CHRISTMAS

CONVENIENT TERMS NO INTEREST NO CARRYING CHARGES

AT

**GOODMAN'S**

The Diamond Store of Madison  
220 STATE ST.



## Saddle and Sirloin Banquet Honors Three Judging Teams

Members of the 1958 university judging teams were honored Wednesday night at the fourth annual recognition banquet sponsored by the Saddle and Sirloin club. Golden key awards were presented to the members of the dairy cattle, livestock, and meats judging team by their coaches. The banquet was held at the university YMCA.

Members of the dairy judging team were Tom Brunner, James Day, Gale Gordon, Gordon Hill, Roger Stauffacher, and Lee Swan, with R. P. Niedermeier and J. W. Crowley as coaches. The team competed at national contests held at Waterloo, Iowa, and Chicago, Ill. They placed ninth at the Chicago contest.

VAL BRUNGARDT'S livestock judging team was honored for placing second in the Big Ten meet held at the University of Illinois. They also placed eighth at the Kansas City contest and fifteenth in the recent International Livestock exposition competition held in Chicago. Team member Rudy Erickson placed first in this contest. His teammates are John Culb, Jim Olson, Don Prill, Andrew Remington and Elgin Waugh.

The meats judging team was honored for their very successful season. Coach E. H. Briskey introduced the team which placed

first at the Baltimore contest, second at Kansas City and fourth at the Chicago International Livestock show. John Hansen and Dave Topel placed first in individual honors at the Kansas City and Baltimore contests. Other members of the team are Russ Hartzell, Glen Moen, Dave Shomberg and Phil Wiener.

**HONORED GUESTS** at the banquet were members of the 1938 judging team, three of whom are now on the staff of the university dairy and animal husbandry departments. Professor Fuller, "father" of the Little International show, and "Alice in Dairyland," Barb Haselow, also were presented.

Master of Ceremonies Rudy Erickson introduced the main speaker of the evening, Eugene Meyer, Associate Editor of *Hoar's Dairyman*, who discussed future opportunities in agriculture. Gale Gordon, Little International general chairman for 1959, announced chairmanships for the show scheduled for March 7.

Officers of the Saddle and Sirloin club are Lee Swan, president; Paul Hartwig, vice president; John Mitchell, secretary; Dave Schomber, treasurer and Professors Bray and Neidermeier, advisors.

## Chanukah . . .

(continued from page 1)

celebrating this miracle, which saved the Jews from total destruction.

Chanukah, to the Jewish people, has become a time of exchanging of gifts, of the singing of joyous songs, and of eating heartily of delectable potato pancakes called latkachs.

Jewish students here are getting together at the Hillel foundation to enjoy the celebration of this holiday. Every evening an additional candle is lit until Saturday evening the menorah, or candle holder, will have eight candles in it.

Last Saturday, the second night of Chanukah, the Hillel gave a latkah supper complete with the

festive food, singing, and their annual comic debate "The Latkah vs. the Hamantaschen and the Survival of the Jewish People."

Friday night at 8:45 the Sabbath service will include a Chanukah program with a dialogue reading.

## RUSSIAN-POLISH PARTY

The university Russian-Polish Student club will hold its annual Christmas party and dinner Tuesday at 6 p.m. in the Presbyterian Student center. The traditional "Bigos" will be served as the main course. Entertainment will include Christmas carols, skits and folk songs.

## BLOCK PLEADS FOR CARDS

"Will those people who still have Badger Block cards and capes please return them to the WSA office, if they are through using them, for whatever purpose they have them?" Marty Grais, Badger Block equipment chairman, pleaded today.

## NAMED TO BOARD

Miss Lolav Halverson, assistant professor of physical education for women, has been named to the editorial board of the national Journal of Health, Physical Education and Recreation.

## KEEPSAKE DIAMONDS

by

**L. S. Coryell Jewelers**

"open every evening  
Mon.-Fri. for your  
convenience"

521 State St.

FRIDAY, SATURDAY, AND SUNDAY

*Now!*

A DRAMATIC NEW HIT FOR TRACY! *Color*

**SPENCER TRACY · ROBERT RYAN**

in M-G-M's

**"BAD DAY AT BLACK ROCK"**

co-starring  
Anne FRANCIS · Dean JAGGER · Walter BRENNAN  
John ERICSON · Ernest BORGNINE · Lee MARVIN  
Russell COLLINS

**CINEMASCOPE**

	Mem.	Non-Mem.
Fri. & Sat. Until 6	40c	50c
Fri. & Sat. After 6	50c	70c
All Day Sunday	50c	70c

For Showtimes Call AL 5-9000

**MOVIE TIME**  
IN THE UNION PLAY CIRCLE



A VISION OF LOVLINESS ARE  
YOU . . . IN OUR NYLON  
CHIFFON COCKTAIL FORMAL—  
GLEAMING WITH GEM SET STRAPS,  
TO DAZZLE YOUR ESCORT.

Sizes 8 to 16  
Blue, White or Pink

**\$29.95**

In our new Fashion Center

Second Floor . . . Downtown Only