



LIBRARIES

UNIVERSITY OF WISCONSIN-MADISON

Civil defense news bulletin. Vol. VI., No. 5 May 1965

Madison, Wisconsin: Bureau of Civil Defense, May 1965

<https://digital.library.wisc.edu/1711.dl/SKSG44MV7YDRM9C>

This material may be protected by copyright law (Title 17, US Code).

For information on re-use see:

<http://digital.library.wisc.edu/1711.dl/Copyright>

The libraries provide public access to a wide range of material, including online exhibits, digitized collections, archival finding aids, our catalog, online articles, and a growing range of materials in many media.

When possible, we provide rights information in catalog records, finding aids, and other metadata that accompanies collections or items. However, it is always the user's obligation to evaluate copyright and rights issues in light of their own use.



CIVIL DEFENSE NEWS BULLETIN

BRUCE L. BISHOP
Director of Civil Defense

Published by the BUREAU of CIVIL DEFENSE
Editor: R. W. Curley

VOL. VI., No. 5

4802 Sheboygan Avenue, MADISON, WISCONSIN 53702

MAY 1965

GOV. KNOWLES NAMES BISHOP NEW CD HEAD

Bruce L. Bishop, 41, a career employee with the Motor Vehicle Department, was appointed on April 30 as State Director of Civil Defense by Gov. Warren P. Knowles.



BISHOP

Bishop, who replaces Owen Monfils of Green Bay, has been a member of the State Patrol since 1949 and served as its field commander since 1957. Monfils had been State CD Director since December 1963 when he was named to the position by former governor John W. Reynolds.

Commander of the patrol's field forces, Bishop held the rank of major. His duties included the responsibility for the operations of 240 patrolmen, 83 inspectors and 25 civilian employees and for directing the functions of the patrol's six district offices. He was also the civil defense coordinator for the patrol which included responsibilities for planning for the utilization of patrol personnel in event of a civil defense emergency.

Bishop is a graduate of Tomahawk High School and now resides in Cross Plains with his wife and four children. He holds the rank of major in the National Guard and is Assistant Commandant of the Wisconsin Military Academy which trains officer candidates for the Guard.

*** ELEVEN DAYS AROUND THE CLOCK ***



Gov. Knowles, center of picture, and Roth Schleck, his Executive Assistant, to his left, are receiving their daily briefing on flood disaster operations from Norm Blume, Communications and Warning Officer, at the CD Command Post in the State Capitol. Seated at the table are John W. Roach, Deputy Adjutant General; Gil Czarnecki, Area CD Supervisor; and John W. Fitzpatrick, Deputy Director of State Civil Defense. The Command Post operated 24 hours a day for 11 consecutive days during the flood and tornado disasters. During the period the CP sent and received over 1,000 emergency messages to local and state authorities.

SUMMARY OF STATE CD DISASTER OPERATIONS

EDITOR'S NOTE: The following chronological synopsis of State Civil Defense operations, both prior to and during the April flood and tornado disasters in Wisconsin, was compiled from the CD Bureau's official message logs recording day-to-day events as they actually happened.

(The State CD Bureau gratefully acknowledges the fine assistance and cooperation of the wire services, the press, and radio and TV news media when called upon for dissemination of information vital to the safety and welfare of the general public during the emergency period.)



Mar. 10, 1965 - The State CD Bureau published and distributed to local CD directors a 4-page Information Release (No. 2-65) advising them of preparations against possible spring flood emergencies. The Bureau, at this time, was maintaining daily contact with the Weather Bureau and Corps of Engineers. Minor flooding had occurred on the Kickapoo river in the Gays Mills area but forecasts of possible Mississippi flooding were not yet determined.

Apr. 1-8 - In early April the Corps of Engineers notified the CD Bureau that heavy flooding could be expected in Minnesota and Wisconsin from the Mississippi and its tributaries during the next two weeks, with record flood levels possible. The Governor was immediately advised of the situation and kept abreast of daily developments throughout the flood emergency. Area CD Directors were alerted to the danger and the Bureau established liaison with the American Red Cross, local CD directors in flood areas, Adjutant General Ralph J. Olson and other officials of the National Guard in organizing manpower and equipment for Mississippi flood duty.

Apr. 9-10 - Wally Ewald, Western Area CD Director, was ordered by the State CD Director to work closely with civil defense directors in La Crosse and Crawford counties and other Mississippi danger spots in preparation for the coming floods. The Bureau coordinated with Roth Schleck, Executive Assistant to the Governor, and General Olson in supplying sandbags and other assistance to the Prairie du Chien area.

Apr. 11 - (Palm Sunday) Western Area Director reported to State Deputy CD Director John W. Fitzpatrick that sandbagging operations were continuing at Prairie du Chien and La Crosse. Also reported Weather Bureau forecast of severe thunderstorms, hail, and possible tornadoes from 1:00-6:00 p.m. on line south of Lone Rock to Madison. Sandbagging also underway at Hudson. At 3:25 p.m. Gen. Olson reported to Fitzpatrick that a tornado had hit Monroe with many homes destroyed. Reports followed on tornado damage in Jefferson, Walworth and Rock counties. Governor was immediately advised and Fitzpatrick alerted Ken O'Connor, American Red Cross, Louis Remily, CD Health Division, and CD Police Services coordinator Lewis Versnik. Gov. Knowles declared state of emergency (Cont'd on page 3)

(See Disaster picture page insert)

ONE MILLION NOW STOCKED

SHELTER PROGRESS BY COUNTIES

County	Eligible** Shelter Spaces	Licensed	Stocked	Percent*** Stocked	County	Eligible** Shelter Spaces	Licensed	Stocked	Percent*** Stocked
Adams	97	97	50	51%	Marathon	23,379	12,097	11,453	48%
Ashland	2,196	2,057	2,867****	95%	Marinette	12,993	12,471	7,427	57%
Barron	5,571	4,145	4,471****	80%	Marquette	671	379	379	56%
Bayfield	568	568	249	43%	Milwaukee	1,501,960	676,425	352,005	23%
Brown	140,582	114,129	56,991	40%	Monroe	7,454	6,694	6,673	89%
Buffalo	807	507	507	62%	Oconto	1,523	698	694	45%
Burnett	856	856	400	46%	Oneida	10,499	4,239	3,836	36%
Calumet	1,143	733	521	45%	Outagamie	60,995	45,121	33,942	55%
Chippewa	9,612	7,416	6,482	67%	Ozaukee	5,188	4,865	4,275	82%
Clark	272	NONE	NONE	0%	Pepin	1,219	947	956	77%
Columbia	8,824	7,478	6,179	70%	Pierce	19,785	19,596	21,845****	99%
Crawford	3,785	1,740	1,460	38%	Polk	2,387	2,387	1,944	81%
Dane	326,587	204,932	136,063	41%	Portage	8,090	7,592	8,381****	93%
Dodge	8,878	4,353	2,641	29%	Price	1,369	750	638	46%
Door	3,390	818	358	10%	Racine	89,643	76,864	38,890	43%
Douglas	17,737	16,130	16,579	93%	Richland	5,149	4,598	4,580	88%
Dunn	3,495	3,273	4,860****	93%	Rock	74,996	67,753	57,424	76%
Eau Claire	46,123	43,614	15,180	32%	Rusk	1,493	1,255	997	66%
Florence	1,595	984	984	61%	St. Croix	3,574	3,521	161	04%
Fond du Lac	9,077	7,639	7,039	77%	Sauk	7,784	6,811	5,782	74%
Forest	2,291	1,990	1,963	85%	Sawyer	417	345	345	82%
Grant	14,916	3,955	3,716	24%	Shawano*	8,894	5,358	8,300****	60%
Green	5,438	4,386	4,371	80%	Sheboygan	31,502	25,202	23,603	74%
Green Lake	731	467	467	63%	Taylor	335	282	282	84%
Iowa	2,862	676	356	12%	Trempealeau	701	701	701	100%
Iron	5,376	109	54	01%	Vernon	3,654	3,261	3,276	89%
Jackson	792	655	180	22%	Vilas	1,791	1,417	1,267	70%
Jefferson	5,434	4,499	1,503	27%	Walworth	7,771	4,013	1,275	16%
Juneau	865	599	53	06%	Washburn	624	624	624	100%
Kenosha	33,823	32,154	26,483	78%	Washington	4,737	4,447	4,064	85%
Kewaunee	3,891	3,891	3,891	100%	Waukesha	34,138	12,045	14,329	41%
La Crosse	43,001	22,731	17,501	40%	Waupaca	8,083	3,926	3,635	44%
Lafayette	1,953	1,739	852	16%	Waushara	189	189	189	100%
Langlade	6,808	6,808	6,808	100%	Winnebago	40,452	30,629	14,199	35%
Lincoln	6,570	4,896	4,589	69%	Wood	20,900	16,815	16,419	78%
Manitowoc	13,059	11,103	8,561	65%	TOTALS:	2,743,344	1,596,344	1,000,022	36%

*Includes Menominee County

**Categories 2-8 (Protection Factor of 40 or better)

***Percent stocked of eligible spaces.

****Indicates overstocking of some shelters later reduced by updating survey.

NOTE: All figures shown are as of March 22, 1965.

NEW SCHOOL DISPLAY TO BE DISTRIBUTED

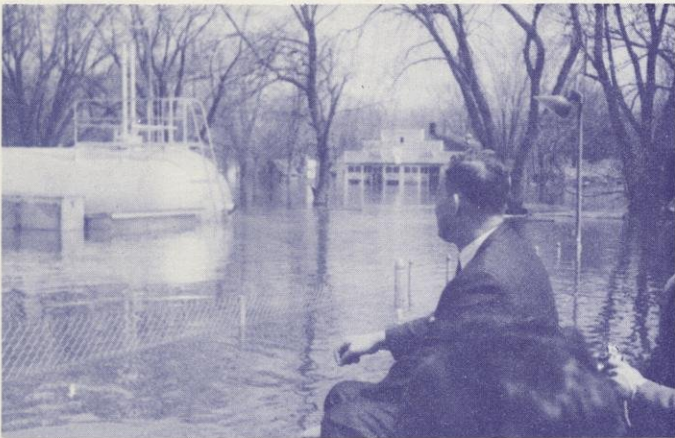
OCD will start distribution in May of a new table-top display devoted to fallout protection in new schools.

The display is 28 inches high and 42 inches long and printed on both sides in four colors. It illustrates how low-cost, dual-purpose fallout shelter space is being

incorporated in the design of many new school buildings all over the country without interfering with normal functions or appearance. One display will be furnished to local CD offices which then can order in quantity from the AG Publications Center.



Photographs below were taken at the height of the most disastrous floods in Wisconsin's history. Record crests were recorded on the Mississippi at La Crosse—17.7 ft. (flood stage 12ft.), Prairie du Chien—25.4 ft. (flood stage 18ft.), and Cassville—23.6 ft.(flood stage 15ft.). Estimated damage from both floods and tornadoes exceeds \$11 million.



30,000 gal. liquid propane gas tank floats like submarine at anchor in Prairie du Chien, as Al Hulett, State CD Bureau, watches closely. Tank was cabled the previous night by Hulett, Sheriff Ray Childs and 6 firemen.



Depth of flood waters are accentuated by street sign in front of historic Villa Louis at Prairie du Chien. Villa, built on Indian burial mound, escaped damage.



Corner of Klindt's Grocery in Cassville had to be shored up as its foundation was undermined by flood waters.



CD Control radio shack in La Crosse City Hall where Ham and Citizen Band operators handled emergency messages from civil defense, Red Cross and County Control.



Mary Hinsberger, La Crosse CD Director, and Harold Otto, 10th ward alderman, stand next to snorkel Guard truck improvised by CD personnel into rescue vehicle complete with emergency power, communications, pumps, hoses, boat, etc.



Homes appear to be floating in this scene of Prairie du Chien's fourth ward at height of Mississippi flood crest.

(TORNADO PHOTOS ON OTHER SIDE)

TORNADO PICTURE PAGE

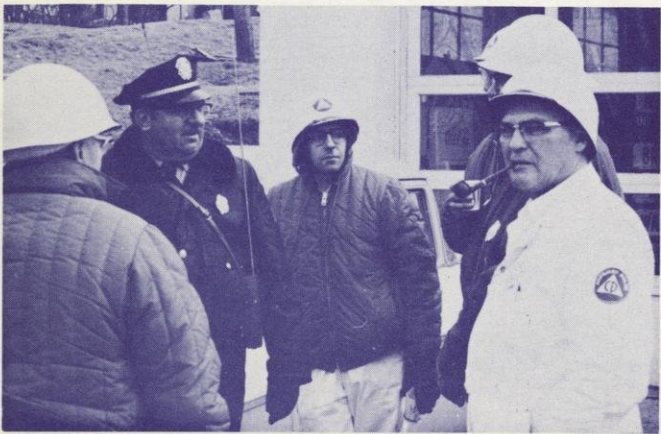
The devastating effects of the severe tornadoes which hit the city of Monroe and Jefferson county areas on Palm Sunday are shown in the following pictures. (Monroe photographs courtesy of Tom Lucas, Welfare Dept.)



MONROE—Funnel literally exploded this home giving it the appearance of a lean-to.



MONROE—Brick home had two huge holes punched in it showing tremendous force generated by twister.



MONROE—Civil defense auxiliary police receive briefing from regular police official prior to tornado clean-up operations.

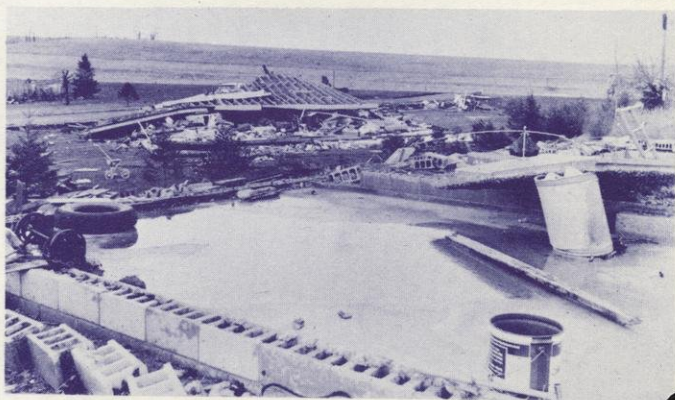


MONROE—Residential areas, such as above, took on the appearance of junk yards following the destructive storm.



(Courtesy Watertown Daily Times)

JEFFERSON COUNTY—Machine shed on Schroeder farm in Town of Ixonia was completely demolished.



(Courtesy Watertown Daily Times)

WATERTOWN—Brand new home on southwest city limits was lifted off foundations and left a pile of debris.



STATE "CD" DISASTER OPERATIONS — Contd from page 1

for Monroe area at 3:47 p.m. A disaster command post was set up at the Watertown EOC by Robert Hensen, Eastern Area Director, in accordance with State CD Natural Disaster Plans. Over 100 CD police volunteers from Dodge, Fond du Lac and Waukesha counties worked all Sunday night in the tornado ravaged areas of Jefferson county. Mass feeding of the volunteers was carried out at the EOC. CD volunteers in the hard hit Monroe area were carrying out operations under the direction of Charles Marvin, Green county CD director. Robert Williams, Southern Area CD Director was assigned by State CD Director Owen Monfils to assist in cleanup operations. Three deaths were reported on the highways due to the tornadoes.

Apr. 12 — At 9:00 a.m. the Governor authorized the activation of the Communications Command Post in the vault of the Governor's office. By 10 o'clock all communications systems were in operation and manned and in contact with counties threatened by the flood. Six direct telephone lines which are normally on a standby basis were opened and phone numbers were released to the afflicted counties. The Motor Vehicle Department Law Enforcement teletype net with access points in the major threat counties of St. Croix, Pierce, La Crosse and Grant was also activated. Flood reports received from the U.S. Weather Bureau, Truax Field, and by phone from the St. Paul District Corps of Engineers Office, St. Paul, Minnesota were henceforth transmitted as received over this system. Unscheduled tests were made on the National Warning System with access from the Governor's Command Post to the 20 counties on that system.

The Red Cross Disaster Control Office was informed of our actions and liaison established. State agencies with resource capabilities for the threatened counties were alerted and liaison established with the Governor's Command Post. These included the National Guard, Public Service Commission, State Board of Health, Conservation Department, Motor Vehicle Department, Department of Public Welfare and the Highway Commission.

A duty roster was prepared and the Command Post began 24-hour-a-day operations manned by State Bureau of Civil Defense personnel. A summary report was presented to the Governor of actions taken.

At this time Pierce County Civil Defense Director reported evacuation of 40 people at Hager City to a Red Cross shelter at a warehouse. Prescott reported ice jams a threat to the U.S. Hwy. 10 bridge. La Crosse requested and received 20 dump trucks, two bulldozers and an endloader from the National Guard.

At 11:55 p.m. the Wisconsin Field Representative from the Office of Civil Defense, Battle Creek, Michigan arrived and offered his assistance.

Apr. 13 — The Office of Emergency Planning Regional Director arrived for a 7:30 a.m. briefing with the Governor and staff at the Command Post. CD Director Monfils and his staff conducted the briefing. The OEP Director explained Public Law 875 requirements, and the Governor issued orders to the CD Director to grant the required data in order to estimate the need and eligibility of Wisconsin for Federal assistance.

Situation reports were received from the Motor Vehicle Department, the Public Service Commission, the Highway Commission and the State Board of Health on their actions to date. All agencies responding to requests for assistance were asked to submit summary reports each day for the duration of the emergency. Bureau of CD personnel condensed these reports and included them with the daily situation summary to the Governor.

Permission was received from the Corps of Engineers for local dynamiting of ice jams threatening Federal bridge structures and the Highway Commission was informed. An ice jam at Hudson was dynamited. La Crosse reported the evacuation of 300 persons at this time, mostly from the French Island area.

Apr. 14 — The Bureau staff prepared consolidated reports for tornado area damage totals and the flood status to date for the Governor to present to the press in Minneapolis. Contact was made by Bureau of Personnel with the State FHA Director and the Small Business Administration representative. Director Monfils ordered the State CD Fire & Rescue Services chief to La Crosse for extended duty to relieve the CD Area Director who had been on continuous duty for several days, and to coordinate back-up communications efforts and determine available resources of neighboring unaffected counties, should such assistance be required as the flood threat increased.

Authorization was received from the Corps of Engineers for counties needing additional sandbags to pick them up from the Federal Boat Yard at Fountain City, Wisconsin.

Apr. 15 — The Governor declared the following counties as flood emergency counties. They are: Pierce, Pepin, Buffalo, Trempealeau, Vernon, Crawford and Grant.

This allowed CD volunteers working in these counties to alleviate flood effects and to be covered by Workmen's Compensation Laws of Wisconsin.

Major activities consisted of expediting requests for sandbags, Red Cross assistance, Weather Bureau flood reports, Highway Commission road reports, briefing news media and Legislators from some of the afflicted areas.

Apr. 16 — Governor Knowles met in La Crosse with Federal, state, county and local officials for a briefing on Federal aid. The Red Cross reported their long range estimate of anticipated evacuees (14,426 persons in 16 counties) and reported that they were planning food and shelter requirements accordingly. National Guard units continued on 24-hour-a-day operations in La Crosse, providing dyke construction equipment, manpower, security and communications assistance to the community.

Authority to activate the Wisconsin Civil Air Patrol when needed was received from the Wisconsin WING Commander.

The USAF, Truax Field, was contacted to supply search lights to La Crosse for nighttime inspection of the flood dykes. Generators from the State Department of Public Welfare and pumps from the Wis. Conservation Department were dispatched to Buffalo County in response from two requests from the Buffalo County CD Director. These were needed to protect vital public facilities such as the drinking water system and the sewage plant.

A complete summary was received from the Public Service Commission on the power systems, dams and gas service in the flood affected areas.

Apr. 17 — Continued responding to requests for sandbags, equipment and manpower from the afflicted counties. CD Auxiliary Police were provided to La Crosse from Vernon and Richland Counties and all auxiliary police units in neighboring counties were alerted for possible flood duty.

The State Department of Public Instruction announced that any equipment under their control in the Surplus Property Program was available when needed.

The Conservation Department supplied a generator to Winona, Minnesota.

The Office of Emergency Planning representative arrived for extended duty and briefed the Governor on the requirements for eligibility for Federal assistance under Public Law 875. A subsequent briefing of CD Bureau personnel, Dept. of Administration Director, Bureau of Management Director and the Executive staff was held to plan the steps required to give the Governor the data and facts necessary to request the President to declare Wisconsin's afflicted counties a major disaster area.

The Governor and staff then flew to La Crosse for a meeting with local officials and Federal Corps of Engineers officers to

(Cont'd on back page)





STATE "CD" DISASTER OPERATIONS — Cont'd from page 3 . . .

brief them on the Governor's desire to receive Federal assistance.

State Director Monfils inspected all CD activities in La Crosse and reviewed the staff operations, and recommended additional communications capabilities be provided. Two telephones were installed, arrangements were made for radio access to the State Dept. of Public Welfare communications network and the State Motor Vehicle Dept. radio and teletype network.

Monfils also released two state CD Area Directors from tornado duty and assigned them to Hudson and Prairie du Chien, respectively, thereby dividing the CD coordination and assistance workload into three sectors of 2, 4 and 3 counties under each area director's supervision.

Apr. 18 — The State Dept. of Public Welfare sent two generators from Fox Lake to the city of La Crosse, and the Conservation Dept. sent a pump needed to counteract seepage through dykes.

The State Dept. of Public Health District officers briefed local Health officials in all flood-affected localities on anticipated health and sanitary problems.

The National Guard, in response to appeals for assistance, sent units from Arcadia and Eau Claire to assist the Corps of Engineers in sandbagging operations at Fountain City, Alma and Cochrane.

State Area Directors reported that they had arrived at their duty posts and had briefed local officials on available state assistance.

Apr. 19 — All bridges across the Mississippi River were closed except at La Crosse and Lansing due to high water. Several communities reported it necessary to pump sewage into the river as local treatment plants could no longer handle the requirements.

The Highway Commission gave permission to the Minnesota Highway Dept. to dump gravel on Wisconsin Highway 35 so trucks could get through 3 feet of water blocking the highway to carry gravel desperately needed in Minnesota. All communi-

ties reported feverish dyke construction activity throughout the night and the La Crosse authorities found it necessary to close several main roads to control sightseers and permit the free movement of emergency vehicles.

The Prairie du Chien City Council met to decide on a firm evacuation policy in anticipation of record flood stage according to revised U.S. Weather Bureau forecasts. Sixty families had been evacuated at Prairie du Chien at this time.

Apr. 20 — The Governor announced that he is requesting the President to declare the 16 counties which he had previously declared as emergency areas, as disaster area counties. 1,288 families have been evacuated according to the Red Cross at this time, but reports are not in for all counties. The flooded fuel tanks at La Crosse have been determined to be safe at this time and are being watched closely by state and local fire officials. Emergency communication systems at La Crosse have been activated due to the loss of some telephone lines.

A citizens band radio network has been established at the dams and dykes in the Prairie du Chien area and is reported operational. All telephone lines to Onalaska and French Island are out and radio communications are being used.

The U.S. Weather Bureau at French Island has moved to the Post Office Building in La Crosse because of the loss of communications.

State Bureau Director Monfils ordered another staff member to La Crosse for relief duty. Iowa County provided two pumps to Cassville to protect the sewage disposal and public water system there.

Apr. 21 - 27 — The CD Command Post continued 24-hour operations through the night of Apr. 22. From Apr. 23 - 25 it operated on an 18-hour basis. (Flood crests had hit their peak during this period and water levels were receding.) On Apr. 26, operations were reduced to 14 hours and on Apr. 27 the CP was inactivated at 4:00 p.m. and normal operations resumed at the State CD Bureau.

After 10 days, return to
STATE BUREAU OF CIVIL DEFENSE
Hill Farms State Office Building
4802 Sheboygan Avenue
MADISON, WISCONSIN 53702

NON-PROFIT ORG.
U. S. Postage
PAID
MADISON, WISCONSIN
Permit No. 591