



LIBRARIES
UNIVERSITY OF WISCONSIN - MADISON

Howse advertisement.

[s.l.]: [s.n.], 1948

<https://digital.library.wisc.edu/1711.dl/DT6E4S7MZWLX483>

<http://rightsstatements.org/vocab/InC/1.0/>

The libraries provide public access to a wide range of material, including online exhibits, digitized collections, archival finding aids, our catalog, online articles, and a growing range of materials in many media.

When possible, we provide rights information in catalog records, finding aids, and other metadata that accompanies collections or items. However, it is always the user's obligation to evaluate copyright and rights issues in light of their own use.

The Howse[®] Total Hip Prosthesis.

Eleven good reasons why you should use this new development.

* A strong recommendation from a leading Orthopaedic Surgeon:

"This prosthesis has been developed with a view to obtaining the continued advantages of both the all-metal types and the metal and plastic types.

It has the great advantages of the low friction and low wear characteristics of the metal on plastic prosthesis with the addition of a vacuum effect which positively maintains the head reduced in the acetabulum, this greatly reducing the risks of subsequent dislocation."

Mr A. J. G. Howse F.R.C.S. Consultant Orthopaedic Surgeon at the Central Middlesex Hospital, London.

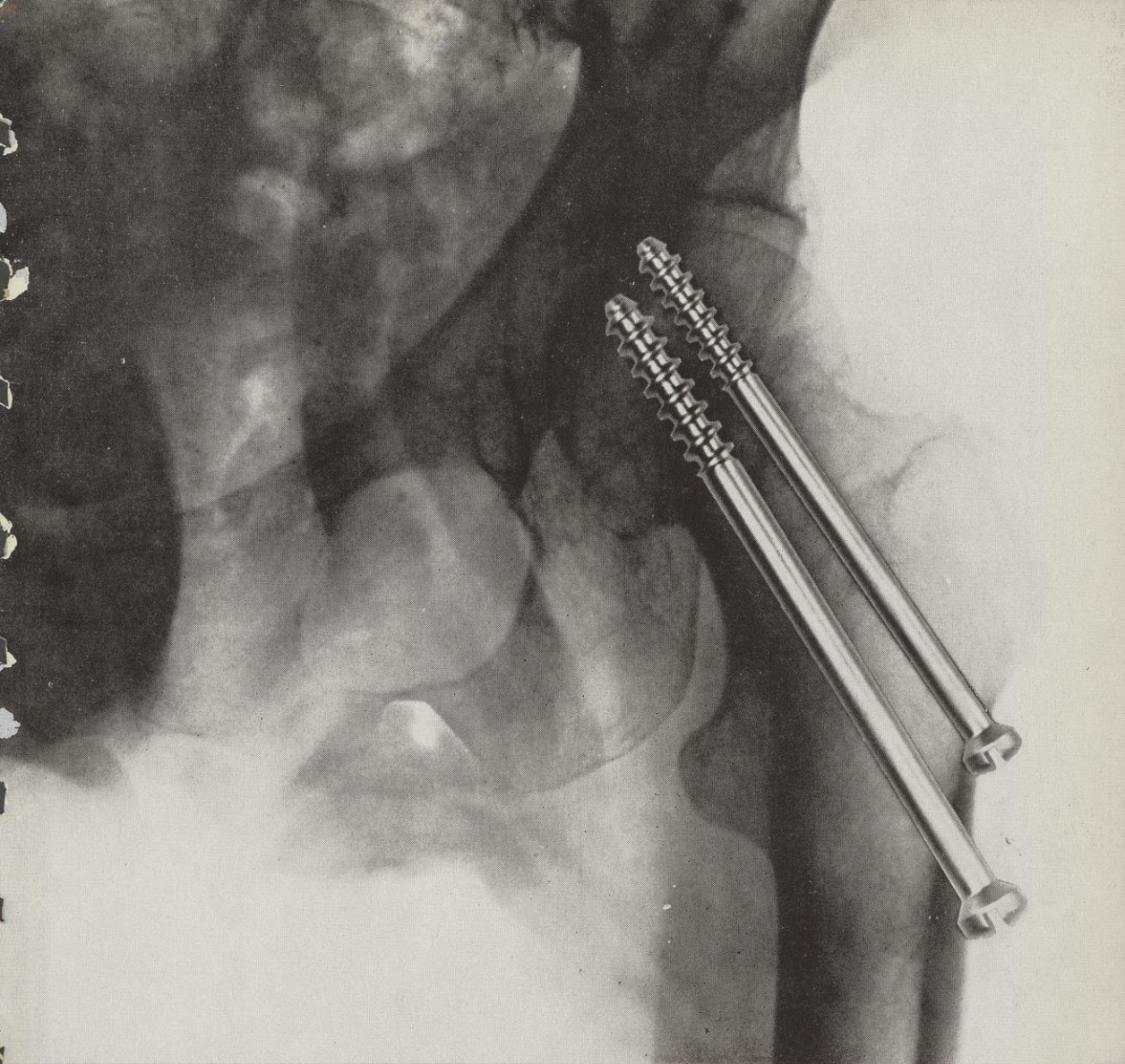
- * Ease of insertion and snap-on cup make post-operative dislocation impossible.
- * No need to remove great trochanter.
- * Metal to plastic bearing surface.
- * Greater head size gives a much lower loading per square centimeter of bearing surface.
- * Stem of prosthesis is of stainless steel (B.S.EN. 58.J) eliminating the possibility of breaking, with narrow neck allowing greater movement.
- * Greater seating area prevents post-operative sinking into the intramedullary cavity.
- * The prosthesis is received assembled and sterilised ready for immediate use.
- * Requires no expensive instruments for insertion.
- * Grooved outer rim of cup prevents possible rotation in the acetabulum, and radio-opaque marker enables post operative vision.
- * Immediately available at a realistic price.

If you would like further information about the Howse Total Hip Prosthesis please write in for a leaflet.

D. Howse & Company, 103-105 Golborne Road, London W10. Telephone 01-969 0719.

HOWSE[®]

Develop and manufacture orthopaedic equipment



Photograph taken from original X-Ray

The Howse Cannulated Screw

Guarantees simple, sure fixation and compression in cancellous bone

The Howse Cannulated Screw has been successfully used by Mr. A. J. G. Howse FRCS to provide a simple method of fixation for most types of fracture, including femoral neck, and shoulder fractures.

This implant has been designed with a thread form that gives maximum grip with minimum depth. And is made with such precision that the cannulation cannot affect its strength.

The screw can be inserted over a guide wire. It avoids hammering, and

ensures ease of compression at the point of fracture. No other compression device is required.

If you would like further information about the Howse Cannulated Screw, or any other equipment in the orthopaedic range, please write for literature.

D. Howse & Company, 103-105

Golborne Rd,
London W10.

Telephone

01-969 0719. Develop and manufacture orthopaedic equipment

HOWSE