



LIBRARIES

UNIVERSITY OF WISCONSIN-MADISON

United War Work Campaign as conducted in Wisconsin November 11-20, 1918.

Orbach, Lee C. H.

[Madison, Wis.]: [Campaign, Wis. Headquarters] , [1918]

<https://digital.library.wisc.edu/1711.dl/EY3IKFNWTLZ668F>

<http://rightsstatements.org/vocab/NoC-US/1.0/>

The libraries provide public access to a wide range of material, including online exhibits, digitized collections, archival finding aids, our catalog, online articles, and a growing range of materials in many media.

When possible, we provide rights information in catalog records, finding aids, and other metadata that accompanies collections or items. However, it is always the user's obligation to evaluate copyright and rights issues in light of their own use.

027.6 W

includes a la war service

UNITED WAR WORK CAMPAIGN



AS CONDUCTED IN WISCONSIN

NOVEMBER 11-20, 1918



Being a brief sketch of the greatest benevolent campaign in the annals of Wisconsin, including facts and figures as prepared and compiled by LEE C. H. ORBACH, state publicity director

WISCONSIN CAMPAIGN ORGANIZATION

OF THE

UNITED WAR WORK CAMPAIGN

EXECUTIVE COMMITTEE

EMERSON ELA, Army Y. M. C. A., *Chairman*
 MRS. W. L. ROACH, Y. W. C. A. War Work Council
 WILLIAM J. NUSS, National Catholic War Council
 PROFESSOR L. B. WOLFENSON, Jewish Welfare Board
 JUDGE M. B. ROSENBERY, War Camp Community Service
 M. S. DUDGEON, American Library Association
 A. T. VAN SCOY, Salvation Army

GENERAL COMMITTEE

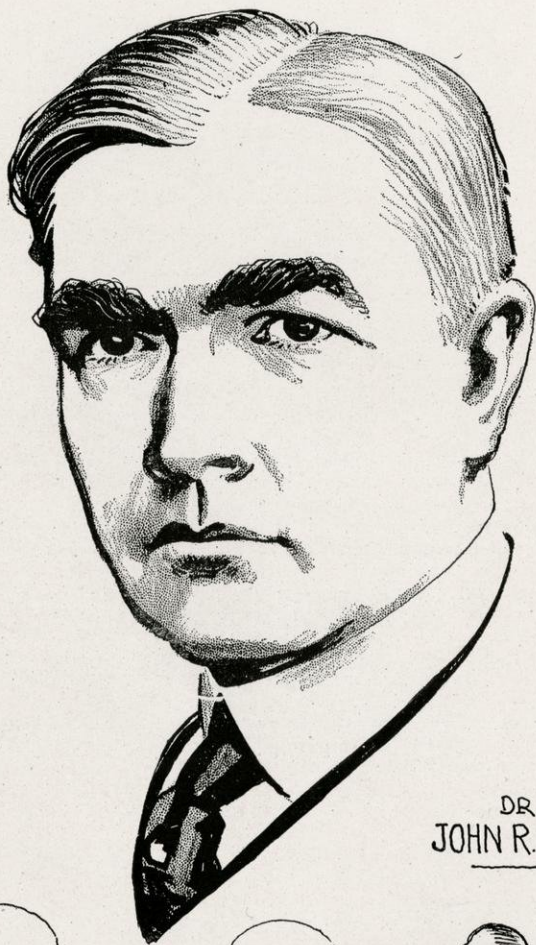
JUSTICE JOHN B. WINSLOW, *Chairman*

Y. M. C. A. -----	Emerson Ela, Madison F. E. Anderson, Milwaukee H. F. Lindsay, Milwaukee
Y. W. C. A. -----	Mrs. James S. Church, Milwaukee Clara S. Roe, Madison Mrs. W. L. Roach, Madison
National Catholic War Council-- (Including K. of C.)	William J. Nuss, Sheboygan Walter M. Burke, Kenosha Rev. Joseph Edward Hanz, Beloit
Jewish Welfare Board -----	Professor L. B. Wolfenson, Madison Rabbi Charles S. Levi, Milwaukee Nath'l Stone, Milwaukee
War Camp Community Service--	Justice M. B. Rosenberry, Madison Fred Vogel, Jr., Milwaukee E. J. Sensenbrenner, Neenah
American Library Association--	Justice John B. Winslow, Madison M. S. Dudgeon, Madison Charles, E. McLenegan, Milwaukee
Salvation Army -----	Brig. John C. Smith, Milwaukee J. W. Disch, Milwaukee A. T. Van Scoy, Milwaukee

STATE PERSONNEL

EMERSON ELA, Chairman Executive Committee
 LOUIS C. BRADSHAW, Campaign Director
 LEE C. H. ORBACH, Publicity Director
 H. F. LINDSAY, State Treasurer
 M. S. DUDGEON, Speakers' Bureau
 CLARA S. ROE, Women's Work Director
 MARGUERITE M. MERRIMAN, Associate Publicity Director
 ARNOLD B. HALL, Student Executive
 AMANDA C. NELSON, Student Executive
 ELIZABETH E. MEEHAN, Victory Girl Executive
 GEORGE A. BURNS, Victory Boy Executive

“On Wisconsin”

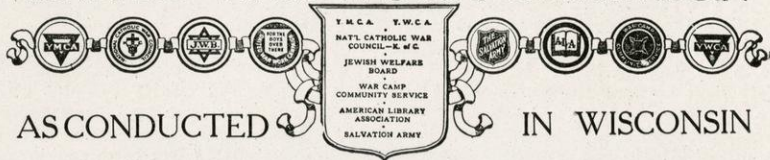


DR.
JOHN R. MOTT



THE NATIONAL DIRECTOR GENERAL

UNITED WAR WORK CAMPAIGN



In the greatest benevolent campaign in the annals of Wisconsin this state subscribed the magnificent sum of \$4,546,706.25 in the United War Campaign, conducted November 11 to 20. By subscribing 134 per cent, of its minimum quota, which was \$3,390,000, the Badger state ranks among the highest in the United States. It is third in the Central War Department, comprising fourteen states.

Never before in the history of Wisconsin was such a sum raised by voluntary subscription. This is the more remarkable in view of the fact that this immense undertaking was accomplished in the face of such adverse circumstances as never before confronted a campaign. With but scant preparation for the actual drive, by reason of its immediate precedence by the Fourth Liberty Loan and the general elections, the many difficulties were augmented by serious influenza epidemics, quarantines and forest fires in some of the northern counties. The influenza situation prevented the scheduled speaking campaign and hundreds of speakers were unable to add their mite to the campaign as a consequence. Schools were closed and in some instances did not open until long after the close of the drive.

Another serious handicap was the inevitable reaction which followed the signing of the armistice on the very day scheduled for the inauguration of the United War Work Campaign.

Then, too, it must be borne in mind that prior to the actual launching of the campaign revision after revision, change after change and substitution after substitution in the national plans followed in successive events requiring repeated readjustments of organization plans and of state and county quotas. It was only through the executive ability of the Wisconsin campaign leaders and the patriotic and generous response on the part of the people of Wisconsin that the campaign in this state succeeded. Despite these obstacles—or because of them—Wisconsin wrote another glorious chapter to its lengthy and honorable war history.

With such leaders at the helm as Chief Justice J. B. Winslow, chairman of the general committee, Emerson Ela, chairman of the state executive committee, Mrs. W. L. Roach, chairman of the women's council and the various members of the state staff, augmented by ten sterling district chairmen and seventy-one county chairmen of unquestioned ability the machine set up in Wisconsin swept across the goal like a well oiled automaton.

AS IT STARTED

The inception of the drive which eventuated into the United War Work Campaign was a joint campaign contemplated by the Army Y. M. C. A. and the Y. W. C. A. War Work Council. As far back as in May of 1918 these two organizations had perfected plans for a national drive which contemplated the raising of \$115,000,000 of which the Y. M. C. A. was to receive \$100,000,000 and its sister organization \$15,000,000.

In preparation for this drive, campaign organizations were set up in every state of the union. In Wisconsin a strong working body was formed

under the leadership of Attorney Emerson Ela of Madison, who ultimately was selected to head the United War Work Campaign.

After Wisconsin and many other states of the nation had outlined specific plans for waging the Y. M. C. A.-Y. W. C. A. drive, these plans experienced their first serious upheaval when the War Camp Community Service and the American Library Association linked forces with the two Y. associations, thereby making it a four

cornered affair. held, quotas were changed in the new phases of the campaign. The attendant tation of the campaign was assigned a which seemed all amount.

When matters normal state and ing the drive we their forces for a on the pocketbook word came that a change in the campaign had been made and merger would combine more organizations were the National Council, Jewish and the Salvation seven organizations in the one campaign, a more drastic plans and quotas tive than at any iginal campaign. The revised goal by these seven affiliates was then \$3,390,

Girding itself efforts that loom successful prose United War Work consin set out to campaign into such an organization as would triumphantly "carry on" for the "glory troops" who helped make this world a decent place to live in by shunting the Hohenzollern dynasty into oblivion and freeing the world for democracy.

Representatives of the seven organizations met in their initial conference at the Pfister Hotel, Milwaukee, September 11th. The session was called to order by Chief Justice John B. Winslow of the Wisconsin supreme court, who, upon motion by Emerson Ela, was elected to preside as chairman. M. S. Dudgeon of the American Library Association served as secretary. It was at this meeting that Justice Winslow was elected chairman of the general state committee and Mr. Ela as chairman of the state executive committee. The closest harmony prevailed.

Wisconsin may justly be proud of its record in this campaign. With an original quota of \$3,390,000.00 the people of Wisconsin generously over-subscribed and contributed a total of over four and one-half million dollars. Too much credit cannot possibly be given to the ten district chairmen and to the seventy one county chairmen who, in the face of the worst obstacles that were ever encountered in a drive of any kind, refused to acknowledge defeat or failure, and in practically every instance kept on with their tasks until at least the minimum one hundred per cent quota had been reached. There can be no question whatever that the district chairmen and county chairmen in the state are entitled to the greatest credit for the remarkable success of this campaign. They and the thousands of workers who devoted their time unstintingly to this big undertaking may very justly take great satisfaction in the part they had in this big piece of patriotic work for the benefit of the boys who fought and helped to win the world war for democracy.—EMERSON ELA.

Conferences were revised and plans accordance with and different as-upon the augmentation. Wisconsin quota of \$2,225,000 most an impossi-

assumed a more the officials headed drawing up flank movement ks of Wisconsin, nother important paign plans had that this time the solidate three tions. These three Catholic War Welfare Board, Army. With these tions consolidated paign organiza-tic revision of was made imperative since the or-was launched. set for Wisconsin liated agencies 000.

for the herculean ed ahead for the cution of the Campaign, Wis-amalgamate its



JOHN B. WINSLOW
State General Chairman

This meeting was marked by two distinctive sessions. The first, which witnessed the actual beginning of the organization, was primarily a meeting of representatives of the seven organizations joining in the campaign. The second was a meeting of the General State Committee which was created by the first conference. To quote directly from the minutes of the initial sessions:

"The chairman asked Mr. Emerson Ela to state the status of the united war work activities movement. After some discussion it was unanimously agreed, without motion, that the merger of the seven organizations for the campaign must be absolute and complete and that there must be no possible duplication of organization, although this merger might necessarily involve the abandonment of some organization work heretofore accomplished.

"It was moved by Mr. Ela, seconded by Rabbi Levi, and carried, that there be now created a state organization known as the 'General State Committee of the United War Work Campaign' and that this committee be composed of three members appointed by each of the seven affiliated organizations. This action having prevailed the meeting resolved itself into the 'General State Committee of the United War Work Campaign.'"

During the course of the meeting of the general state committee the following significant action was taken, which is quoted direct from the minutes of the proceedings:

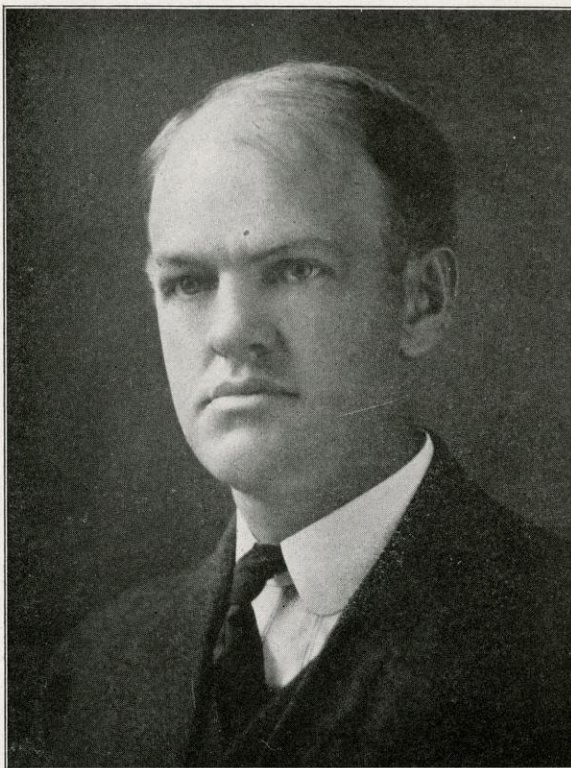
"It was moved by Mr. Martin, seconded by Mr. Lindsay, and unanimously carried, that the state executive committee consist of seven members, one from each affiliated organization, with Mr. Ela as chairman, such chairman to possess full power to proceed at once to complete the final organization along the lines embodied in his report and remarks as made to representatives present; that the other members of such executive committee be named by Chief Justice Winslow, the chairman, after consultation with the representatives of each organization."

With these broad powers and under the authority given him to perfect the organization throughout the state and to name his assistants in pressing the campaign, Chairman Ela announced that Louis C. Bradshaw of Racine, would be director of the campaign and that Lee C. H. Orbach, who was enlisted with the Army Y. M. C. A., would be publicity director.

OFFICIALS SELECTED

An executive committee of seven, consisting of a representative nominated by each of the seven organizations merged in the drive, was appointed by Justice Winslow. The personnel of the executive committee follows:

Y. M. C. A. -----	Emerson Ela, Chairman
Y. W. C. A. -----	Mrs. W. L. Roach, Madison
National Catholic War Council -----	Wm. J. Nuss, Sheboygan
Jewish Welfare Board -----	L. B. Wolfenson, Madison
War Camp Community Service -----	Justice M. B. Rosenberry
American Library Association -----	M. S. Dudgeon
Salvation Army -----	Brigadier J. Geo. Barry



EMERSON ELA
State Executive Chairman

The respective organizations were represented at this conference by the following:

Y. M. C. A.—Emerson Ela, Madison; H. F. Lindsay and F. E. Anderson, Milwaukee; Louis C. Bradshaw, Racine; Lee C. H. Orbach, Madison.

Y. W. C. A.—Mrs. Jas. S. Church, Milwaukee; Miss Clara S. Roe, Madison.

National Catholic War Council—J. F. Martin, Green Bay; Walter M. Burke, Kenosha.

Jewish Welfare Board—L. B. Wolfenson, Madison; Rabbi Chas. S. Levi, Milwaukee.

War Camp Community Service—W. F. McCaughey, Racine.

American Library Association—Chief Justice J. B. Winslow, and M. S. Dudgeon, Madison.

Salvation Army—Ensign J. Geo. Barry and J. W. Disch, Milwaukee.

The State committee, which elected Chief Justice Winslow as chairman, was composed as follows:

Y. M. C. A. -----	Emerson Ela, Madison F. E. Anderson, Milwaukee H. F. Lindsay, Milwaukee
Y. W. C. A. -----	Mrs. James S. Church, Milwaukee Clara S. Roe, Madison Mrs. W. L. Roach, Madison
War Camp Community Service -----	Justice M. B. Rosenberry, Madison Fred Vogel, Jr., Milwaukee F. J. Sensenbrenner, Neenah
American Library Association -----	Justice John B. Winslow, Madison M. S. Dudgeon, Madison Chas. E. McLenagan, Milwaukee
National Catholic War Council ----- (Knights of Columbus)	Wm. J. Nuss, Sheboygan Walter M. Burke, Kenosha Rev. Joseph E. Hanz, Beloit
Jewish Welfare Board -----	Prof. L. B. Wolfenson, Madison Rabbi Chas. S. Levi, Milwaukee Nat. Stone, Milwaukee
Salvation Army -----	Brig. Smith, Milwaukee J. W. Disch, Milwaukee A. T. Van Scoy, Milwaukee

REVIEW CAMPAIGN PROGRESS

During the course of the organization meeting at Milwaukee Mr. Ela reviewed the progress that had been made up to that time in the development of the Army Y. M. C. A. campaign, commencing with the national conference at New York City which he attended June 3, 1918, and which was subsequently followed by a conference at Chicago of the representatives of the fourteen states in the central military department, of which Wisconsin is a member. At one of the earlier conferences the state of Wisconsin was organized with a state committee of which Mr. Ela was elected chairman. In the elucidation of the work so far accomplished relative to the Army Y. M. C. A. campaign, Mr. Ela asserted in his verbal report that for the sixty days prior to the conference, September 11, every effort had been made to perfect a field organization preparatory for the big drive which at that time had been scheduled for October. He declared that district chairmen had been chosen in each of the ten districts and that county chairmen had been appointed in practically every county

in the state, who in turn had selected other local chairmen in a great many localities, adding that the organization work was being rushed to completion when the merger of the seven welfare agencies was effected.

After studying the various elements necessary to computing quotas, such as total assessed valuation, total income taxes and total population in each county and the ratio these bore to the state total of each item, quotas for every county in the state were fixed, said Mr. Ela. He asserted that the new quotas, which would have to be made by reason of the new merger could be arrived at by taking those figures and making the proper computation of the added percentage. This was subsequently done.

One of the most salient features of the meeting was marked when Mr. Ela, as the head of the original Army Y. M. C. A. campaign in Wisconsin, tendered that entire organization to the United War Work Campaign. He asserted that the merged campaign marked the termination of the activities of the Y. M. C. A. organization and all of the work of the past months, entailing everything that had been accomplished by the Army Y. M. C. A. in perfecting the field organization and accompanying details, were now at the complete disposal of the new organization.

Tentative plans for a state-wide conference of representative men and women from Wisconsin to be held at Milwaukee, September 26th, were discussed. It was decided that invitations should be sent to lists of men and women to be furnished by each of the seven cooperating agencies and this plan was faithfully executed. A motion by Mr. Martin prompted this action.

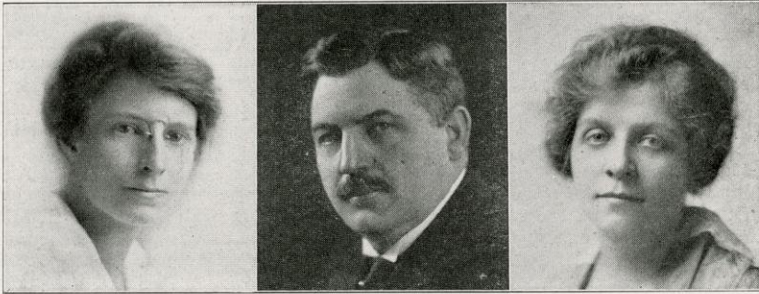
MILWAUKEE CONFERENCE

With more than two thousand men and women in attendance the state-wide conference of the United War Work Campaign, held in Milwaukee September 26th, was historical in significance and epochal in results. The day was opened with a morning conference of district and county chairmen at the Hotel Pfister, at which State Chairman Ela presided. At the morning meeting specific plans for the prospective campaign were outlined; the county quotas—which are shown elsewhere—and the state quota were endorsed and formally accepted; leaders of the campaign were heard in brief addresses, which were most pertinent to the plans of the campaign, while the good fellowship and enthusiasm created by the personal contact of the actual workers proved material factors in the ultimate success of the big drive. Many of those present declared that the morning meeting was the most successful conference of its kind in the annals of the state. The following program was presented at the morning session:

Prayer	Rabbi Charles E. Levi, Milwaukee
Statement	Emerson Ela, Madison
The Campaign Plan	F. J. Vea, Stoughton
Publicity	Lee C. H. Orbach, Madison
Speakers' Bureau	M. S. Dudgeon, Madison
The Woman in the Campaign	Miss Clara S. Roe, Madison
Finances	H. F. Lindsay, Milwaukee
Remarks	Louis C. Bradshaw, Racine
Closing Words	Chairman Ela

THRONGS HEAR MOTT

The afternoon session, which was held in the Plankinton hall of the Auditorium at 1:30 P. M., was marked by an attendance of fully two thousand. Chief Justice Winslow, as chairman of the general committee, officiated as the presiding officer. Dr. John R. Mott of New York City,



CLARA S. ROE
Director Women's Work

M. B. ROSENBERY
War Chest—Corporations

MARGUERITE MERRIMAN
Associate Publicity Director

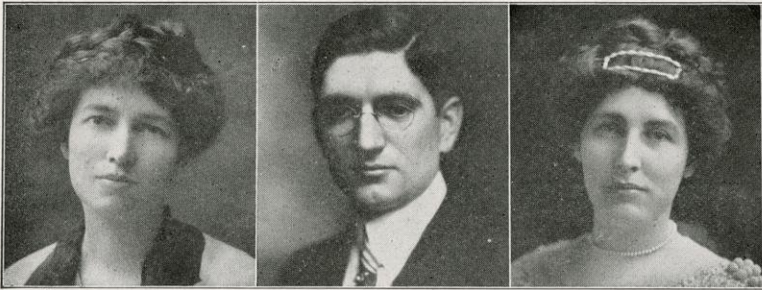
director general of the United War Work Campaign, featured the afternoon session with an address that aroused the enthusiasm of the immense audience to a pitch which clinched success in the forthcoming campaign. A representative of each of the seven organizations also forcefully presented the work of each. Following is the program:

Organ recital -----	W. H. Williamson, Milwaukee
Invocation -----	The Rev. Father O'Leary, Manitowoc
Community Singing -----	Led by Frederick W. Carberry, Milwaukee
Opening Statement -----	Chief Justice J. B. Winslow
Address -----	Dr. John R. Mott, Director General United War Work Campaign
Y. M. C. A. -----	Martin Bickham, Gen. Sec. Great Lakes Navy Y. M. C. A.
Y. W. C. A. -----	Miss Henrietta Roelofs, Y. W. C. A. Worker in France
National Catholic War Council	Bishop Paul Rhode, Green Bay
Jewish Welfare Board -----	Benjamin Poss, Milwaukee
War Camp Community Service	Justice J. B. Rosenberry, Madison
American Library Association	M. S. Dudgeon, Madison
Salvation Army -----	Brig. George Davis, Milwaukee
Address -----	H. M. Breadsley, Kansas City, Mo., Chairman Central Department
Closing Remarks -----	Emerson Ela, Madison, Executive Chairman, Wisconsin
Singing -----	America
Closing Prayer -----	The Rev. C. H. Beale, Milwaukee

MOTT DESCRIBES MERGER SIGNIFICANCE

In stirring words of eloquence, Director General Mott thrilled the large audience in outlining the vast significance of the merger which blended the seven great war relief agencies into a united campaign. "By cooperation and by merging our experiences we achieve higher efficiency," said Dr. Mott. "By working together we promote the solidarity of the nation." Further Dr. Mott said in part:

"When our President, that one who sees both sides of the shield with straighter eye than any man, I think, living, that one who realizes, certainly as no other American, the situation as it is today, that



MRS. W. L. ROACH
Chairman Women's Work

GEORGE A. BURNS
Director Victory Boys

MRS. JAMES E. MEHAN
Director Victory Girls

one who has on his mind and heart every waking hour—and those hours are many each day—the vital interests of the republic, that one whose heart interest, as I can testify from many conversations, is with each one of these seven societies, when that great leader of ours—and the one I think of in a unique sense as the leader of the world—said to us “The difficulties of your going forward in seven separate appeals are far greater than any difficulties that might attend your blending your efforts and going forward together,” that, so far as my knowledge goes, settled the matter once for all for every leader, member and loyal friend of any one of these organizations. We trust our President. The American people have never parted company with him in this war in any one of his proclamations or requests and the last one in connection with which they would part company with his leadership would be this one which seeks to unite all of the forces of righteousness and unselfishness on behalf of the manhood and boyhood of the nation who are seeking to bear the impossible strain of this greatest struggle.”

During the course of his memorable address, Dr. Mott pointed out that another manifest advantage in this coöperative management was the making possible of large economies. He explained that this meant not only a great saving of money but even more the conservation of the time and energy of many thousands of business and professional men. He also said the cooperative plan will make for higher efficiency on the part of the seven societies. Another advantage cited by him was that the bringing together in common action as well as common plan of these societies was destined to promote better feeling all over the United States of America. The promotion of religious unity is another feature of the consolidation, said Dr. Mott.

“Were I to mention another advantage of this plan and of its practices,” said Dr. Mott, “it is this: that it opens up boundless opportunities for all of us; opportunities for a largeness of soul; opportunities for illustrating genuine catholicity of spirit; opportunities for exercising the finest leadership in the sense of that sentence in the Bible, ‘He who would be greatest among you shall be the servant of all;’ boundless opportunities likewise to forget ourselves and to magnify others and to serve.

“So I say when the people back home remind you that there are some things that may have caused mental reservations or some difficulties they see in the appeal, remind them that difficulties are an added attraction.”



LOUIS C. BRADSHAW
Campaign Director

LEE C. H. ORBACH
Publicity Director

H. F. LINDSAY
Campaign Treasurer

Dr. Mott emphasized the need of a large oversubscription. He declared that it was imperative for the morale of our forces that sufficient funds be raised to carry on the work of these seven great war welfare agencies and that only a large oversubscription would suffice.

"There is not a man in Wisconsin who, having seen what I have seen, would not, if necessary, mortgage his farm that these agencies might carry on their work."

ADOPT RESOLUTIONS

Resolutions indicative of the spirit of the vast assembly were unanimously adopted at the afternoon session. F. J. Harwood of Appleton, presented the following:

WHEREAS, President Wilson, our Commander-in-Chief in this war for democracy, has urged that the seven welfare agencies which are serving our fighting forces shall unite in one campaign for the raising of their funds;

RESOLVED, that we heartily accept the recommendation of our President and of the War Department and pledge that we will to the fullest of our ability participate in making this united campaign a success.

Mr. Harwood moved the adoption of the resolution. J. W. Disch of Milwaukee, seconded the motion and the conference unanimously carried it.

The second resolution, which by a unanimous rising vote of the conference solidly put the state of Wisconsin back of the quota assigned it, was introduced by J. F. Martin of Green Bay, who moved its adoption. L. B. Wolfenson of Madison, seconded the motion. The resolution follows:

RESOLVED, that Wisconsin, in state conference assembled, accepts its quota of \$3,390,000 in the United War Work Campaign for \$170,500,000 and pledges itself to raise this amount, for the welfare of the fighting forces of the United States, and for the winning of the war.

CHICAGO CONFERENCE

The next conference of vast significance was held in Chicago at the behest of Director General Mott, October 26th, exactly one month to a day after the state conference in Milwaukee. At the Chicago meeting fourteen



M. S. DUDGEON
*Chairman Speaker's
Bureau*

AMANDA C. NELSON
*Student Campaign
Director*

A. B. HALL
*Student Campaign
Chairman*

states of the Central Military Department met. It was held under special permit by the health authorities who held that, by reason of the fact that the United War Work Campaign was essentially war work and necessary to the bringing about of victory, the influenza ban that had been placed on all other meetings should not be operative in this instance.

Dr. Mott, Sherwood Eddy, Joseph Bilikopf and other notable figures in the campaign addressed the convention.

It was at the Wisconsin conference held during the lunch hour at the Congress Hotel, Chicago, that this state formally went on record as pledging a plus subscription to the United War Work Campaign.

After this gathering the Wisconsin headquarters circulated broadcast in pamphlet form the "TEN REASONS" of Dr. Mott as to "Why We Need Much More Than \$170,500,000." Supplementing the reasons put forth by Dr. Mott with reasons formulated by the Wisconsin chairman stating why Wisconsin should oversubscribe were:

WHY PLUS?

1. BECAUSE of the ten reasons ascribed by Dr. Mott for a plus subscription.
2. BECAUSE his suggestion of need for a generous oversubscription was submitted to the war department and President Wilson and concurred in by them.
3. BECAUSE Wisconsin at the Chicago conference with practically the entire executive committee present; with all district chairmen or alternates present; with a large majority of county chairmen present, voted unanimously to accept the suggestion of an oversubscription.
4. BECAUSE every county to which this has been directly submitted has already voted an oversubscription.
5. BECAUSE other states in the union are accepting and acting upon the suggestion for an oversubscription.
6. BECAUSE Wisconsin claims the right to again prove its unquestionable patriotism by standing back of its fighting forces to the limit of any reasonable request.

WOMAN'S DIVISION

At the first meeting of the State Executive Committee Miss Clara S. Roe was elected director of women's work. Under the splendid supervision of Miss Roe and of Mrs. W. L. Roach, state chairman of the women's advisory council, the women's division of the United War Work Campaign was an invaluable factor in the success of Wisconsin's drive. Miss Roe was formerly connected with the University of Chicago library. She assumed leadership of the Women's work late in July, when she took charge of the Y. W. C. A. campaign, which subsequently was merged in the United War Work Campaign.

The success of the women's co-operation in the campaign was materially advanced by Miss Marguerite M. Merriman of Moline, Illinois, who came to Madison primarily as the publicity director of the Y. W. C. A. campaign, later becoming associate to Mr. Orbach, director of publicity for the United War Work Campaign.

Miss Juliet C. Thorpe, as head of the speaker's bureau conducted an efficient and highly successful campaign. She was confronted with many difficulties by reason of the influenza epidemic and other circumstances, but was able to bridge them most capably.

Miss Ester Williams of the Evanston public library, in assuming charge of exhibits at various county fairs, also played an important factor. Together with Mrs. E. B. Steensland of Madison, she supervised 48 county fairs as well as the state fair at Milwaukee.

At the meeting of the representatives of all seven organizations held September 11th at the Hotel Pfister, Milwaukee, Mrs. W. L. Roach, Mrs. James S. Church and Miss Roe were elected to represent the Y. W. C. A. on the state committee while Mrs. Roach was elected to represent the Y. W. C. A. on the executive committee.

A representative women's convention was held in Milwaukee September 27th, when detailed plans for the women's advisory council in the drive were perfected. Mrs. Roach presided as chairman. The session was one of the most unique in the annals of Wisconsin women's history and at the same time one of the most successful war conventions ever held by women in this state. Every district and many counties were represented. The following program was presented:

Prayer, Mrs. Hugo Teweles, Milwaukee.

Twenty-third Psalm, Commandant, Mrs. Symonds, Racine.

America, Led by Mrs. Louis Auer, Milwaukee.

The Part of Women in the Wisconsin Campaign, Mr. Emerson Ela, Madison.

The Part of Women in the War, Miss Henrietta Roelofs, Y. W. C. A. Worker in France.

The Part of Women in the United War Work Campaign, Miss Margaret Burton, Y. W. C. A. Worker in France.

Discussion—Informational.

Suggestions as to personnel of Advisory Council.

Star Spangled Banner led by Mrs. Louis Auer, Milwaukee.

At the Milwaukee convention the following women were appointed members of the advisory council: Mrs. W. L. Roach, Madison; Mrs. Jas. S. Church, Milwaukee, for the Y. W. C. A.; Mrs. Jos. A. Schumacher, Milwaukee, for Jewish women; Brigadier Mrs. Smith, Milwaukee, for Salva-

tion Army women; Mrs. H. H. Morgan and Miss Juliet C. Thorpe of Madison, for the Woman's Committee of the State Council of Defense; Mrs. L. D. Harvey, Menomonie, for Wisconsin Federation of Woman's Clubs; Mrs. M. V. O'Shea, Madison, for the Consumers League; Mrs. J. A. Aylward, Madison, for Association of Collegiate Alumnae; Miss Blanche Unterkircher, Superior for Library women; Mrs. Edward Birkenwald, Milwaukee for Parent-Teacher Association.

The women aided materially in the Victory Boy and Victory Girl campaigns while in some counties they had complete charge. In most counties they had a part in the actual solicitation of gifts.

"The results of the cooperation of the women in the United War Work Campaign in Wisconsin are intangible results such as cannot be measured," said Miss Roe at the close of the drive. "They put into the campaign their hopes and fears and prayers along with the most loyal and efficient service of which women are capable. They appreciate the splendid spirit of their men co-workers and rejoice with them over Wisconsin's glorious record in over-subscribing this greatest gift in the history of the state."

The personnel of the women's advisory council is appended. To these women leaders the United War Work Campaign is indebted for invaluable service. The following district representatives worked in closest harmony with the district chairmen of the United War Work Campaign and did much toward the success of the drive:

District 1, Mrs. Thos. A. McDougal, Superior; District 2, Mrs. A. H. Shoemaker, Eau Claire; District 3, Miss Susan M. Underwood, Wausau; District 4, Dr. Minnie Hopkins, Oconto; District 5, Mrs. Lillie L. Finch, La Crosse; District 6, Mrs. Wells D. Brooks, Green Lake; District 7, Mrs. D. O. Kinsman, Appleton; District 8, Miss Martha J. Meyer, Lancaster; District 9, Mrs. J. C. Morris, Madison; District 10, Miss Grace Merrill, Milwaukee.

The women county chairmen, who likewise worked in conjunction with the men county chairmen deserve full commendation for their efforts. They were:

District 1.

Ashland, Miss Cecelia Fennely, Ashland.
Douglas, Mrs. P. G. Stratton, Superior.
Iron, Miss Agnes Boyington, Hurley.
Bayfield, Mrs. P. T. Trowbridge, Washburn.
Sawyer, Mrs. C. D. Stillman, Hayward.
Washburn, Miss Lucy Leonard, Shell Lake.
Burnett, Mrs. L. R. Roberts, Webster.

District 2.

Eau Claire, Miss Lilia E. Johnson, Eau Claire.
Chippewa, Mrs. Edmund Porter, Cornell.
Dunn, Miss Eda A. Gilkerson, Menomonie.
Pierce, Mrs. W. D. Doolittle, Ellsworth.
Barron, Mrs. H. L. Goodrich, Cumberland.
Rusk, Mrs. R. March, Ladysmith.
Pepin, Mrs. H. M. Orlady, Durand.
Polk, Mrs. John Klinka, Balsam Lake.
St. Croix, Mrs. Helen Smith Coe, New Richmond.
Mrs. Swenum Swenumson, Baldwin.

District 3.

Marathon, Mrs. Homer J. Evans, Wausau.
 Langlade, Mrs. L. L. Gibbs, Antigo.
 Lincoln, Mrs. August J. Strange, Merrill.
 Oneida, Mrs. Ben Lewis, Rhineland.
 Vilas, Mrs. Ruby B. Radcliffe, Eagle River.
 Price, Mrs. Frank Henry, Phillips.
 Taylor, Mrs. F. G. Pierce, Medford.
 Clark, Mrs. Louis Buddenhagen, Neillsville.

District 4.

Brown, Mrs. Geo. E. Richardson, Green Bay.
 Door, Mrs. Gretchen Spalsbury, Sturgeon Bay.
 Kewaunee, Mrs. W. A. Crowell, Kewaunee.
 Shawano, Mrs. E. V. Werner, Shawano.
 Oconto, Mrs. Walter Harvey, Oconto.
 Marinette, Mrs. Joshua Hodgins, Marinette.
 Forest, Miss Edmire Quidlan, Soperton.
 Florence, Mrs. Ella Thieman, Florence.

District 5.

La Crosse, Miss Harriett McKinstry, La Crosse.
 Trempeleau, Mrs. C. B. Melby, Whitehall.
 Jackson, Miss Jane Spaulding, Black River Falls.
 Monroe, Mrs. F. M. Bray, Tomah.
 Vernon, Miss Ethel Nuzum, Viroqua.
 Buffalo, Mrs. M. C. Fisher, Mondovi.

District 6.

Wood, Mrs. I. P. Witter, Grand Rapids,
 Mrs. J. C. Marsh, Marshfield.
 Portage, Mrs. C. F. Watson, Stevens Point.
 Juneau, Miss Mary Elwell, New Lisbon.
 Adams, Mrs. H. F. Coppe, Friendship.
 Wausau, Mrs. R. W. Rindfleisch, Plainfield.
 Green Lake, Mrs. John Card, Markesan.
 Mrs. Elmer Morse, Princeton.
 Marquette, Miss Anna B. Hull, Montello.

District 7.

Outagamie, Mrs. H. W. Abraham, Appleton.
 Waupaca, Miss Grace Wild, Waupaca.
 Winnebago, Mrs. Edward R. Smith, Oshkosh.
 Manitowoc, Mrs. C. M. Gleason, Manitowoc.
 Fond du Lac, Mrs. W. P. Leek, Fond du Lac.
 Sheboygan, Miss Evangeling Kohler, Sheboygan.
 Calumet, Mrs. Bertha Youngbeck, Chilton.

District 8.

Crawford, Mrs. Geo. T. Atwood, Gays Mills.
 Richland, Mrs. Chas. B. DeVoe, Richland Center.
 Grant, Mrs. S. W. Doolittle, Lancaster.
 Iowa, Mrs. John Williams, Edmund.
 Lafayette, Miss Frances Lillie, Darlington.

District 9.

Sauk, Mrs. R. P. Perry, Reedsburg.
Columbia, Miss Margaret McConochie, Portage.
Dane, Mrs. Wm. S. Marshall, Madison.
Jefferson, Miss Abby Norton, Watertown.
Green, Mrs. F. B. Luchsinger, Monroe.
Rock, Mrs. Frank Van Kirk, Janesville.

District 10.

Washington, Mrs. Adolph Kissell, Hartford.
Ozaukee, Mrs. Julian Zillier, Port Washington.
Waukesha, Mrs. John Martin, Waukesha.
Milwaukee, Miss Grace Merrill, Milwaukee.
Walworth, Miss Helen Martin, Elkhorn.
Racine, Mrs. W. F. McGaughey, Racine.
Kenosha, Mrs. Otis Trenary, Kenosha.
Dodge, Miss Lilly M. Andrews, Beaver Dam.

The executive committee of the Eau Claire campaign will keep a permanent record of those giving to the United War Work Campaign fund. The following resolution was adopted: RESOLVED, that the secretary of this committee at the close of the campaign file with the county council of defense a list showing the names of the persons who have been requested to contribute specific amounts to the United War Work Campaign, with the amount each was asked to contribute. RESOLVED, further, that a further list be filed with the county council of defense showing the names of those who failed in whole or in part and showing the amount each subscribed."

A similar record will be kept by Dance county, the county chairman of the United War Work Campaign having secured permission to place a permanent record of contributors on file with the county clerk. A number of other counties in the state have done likewise.

Kenosha county made an enviable and most creditable record in the campaign. Although a war chest county it accepted its full 150 per cent allotment without question or barter, appropriating a total of \$168,750. On top of that the Victory Boys and Victory Girls boosted the final total to \$173,850, making a net subscription of 155 per cent.

Oshkosh proved itself as resourceful as successful when the local exchange of the Wisconsin Telephone Company was pressed into service to call up each person who failed to respond to letters sent out. The occasion was "Volunteer Day."

Repeated instances were reported to state headquarters whereby communities raised their quotas for the first time in the history of any war drive.

STUDENT'S DIVISION

The student division of the drive was responsible for the campaign in all schools of collegiate rank. Dr. Arnold B. Hall of the political science department of the University of Wisconsin and Miss Amanda C. Nelson of Chicago, an experienced student organizer, officiated as student executives for the drive. With them were associated George A. Burns of Milwaukee, and Mrs. E. R. Bowler of Sheboygan, with the special responsibility for the Catholic colleges.

The success of the student campaign is eloquently attested by the splendid results attained. A total of over \$75,000 was subscribed.

Publicity material consisting of educational pamphlets, posters and splendid sets of slides illustrating the war work of the seven organizations represented in the drive, was sent to each college chairman. There was a very close touch with the speaker's bureau and speakers were provided wherever desired, both for education and for convocation.

No definite goal was set for the state or for the individual college, except in a few instances but the average ten dollar per capita gift was suggested and 100 per cent subscriptions were strongly recommended.

Splendid service was given the student division by Miss Elizabeth Amery and Miss Agnes Boeing of the home economics department of the University of Wisconsin; Miss Ruth Stole of the War Camp Community Service in Milwaukee and D. M. Weller of the Army Y. M. C. A. of the University of Wisconsin. These four visited most of the colleges and were able to give much assistance in the setting up of the local campaigns and in creating enthusiasm.

There were thirty-six universities and colleges which had the campaign, ranging from the University of Wisconsin with five thousand students to the small college or academy of fifty or sixty students. All the schools were affected by the epidemic of influenza, the ban being lifted at the University of Wisconsin only a day or two before the convocation. Some of the larger normal schools did not open until after the campaign dates were over, so that it was with difficulty that the campaign was carried on.

Milton College was probably the banner school in sacrificial giving where one hundred students gave \$1,060.

The report by colleges is as follows:

Lawrence College, Appleton	\$700.00
Northland College, Ashland	452.00
Wayland Academy, Beaver Dam	380.00
Beloit College, Beloit	600.00
St. John's Military Academy, Delafield	2,300.00
Evansville Seminary, Evansville	45.00
State Normal, La Crosse	102.71
Northwestern Military Academy, Lake Geneva	2,360.50
University of Wisconsin, Madison	38,897.16
Milton College, Milton	1,060.00
Concordia College, Milwaukee	107.55
Marquette University, Milwaukee	4,541.50
Stout Institute, Menomonie	1,400.00
Nat'l German American Teachers Seminary	212.25

AS CONDUCTED IN WISCONSIN

19

Milwaukee-Downer College -----	1,832.75
Milwaukee-Downer Seminary -----	193.50
School of Engineering, Milwaukee -----	310.00
State Normal School, Oshkosh -----	1,850.00
State Normal School, Platteville -----	1,040.75
Campion College of the Sacred Heart, Milwaukee -----	558.40
Ripon College, Ripon -----	2,020.50
River Falls Normal -----	443.50
Santa Clara College, Sinsinawa -----	1,600.00
Stevens Point Normal School -----	600.25
Superior Normal School -----	436.02
Tomah Indian Industrial and Training School -----	258.52
Northwestern College, Watertown -----	335.25
Carroll College, Waukesha -----	1,000.00
Whitewater Normal School -----	1,670.00
St. Francis Seminary, St. Francis -----	940.00
Kewautim S. A. T. C. -----	220.00
St. Mary's Academy -----	39.15
St. Mary's Springs Academy -----	45.00
St. Catherine's Academy, Racine -----	85.00
St. Josephs Academy, Green Bay -----	219.00
St. Mary's Academy -----	142.25
Total -----	<u>\$75,603.50</u>

Victory Boys and Victory Girls

Not the least interesting and inspiring feature of the United War Work Campaign, was the movement carried on among the boys and girls of the state under the official title of "Victory Boys" and "Victory Girls" Earn-and-Give-Division. It was a most effective means of enlisting the rising generation in this great united drive, which had for its object the providing of comfort and cheer to the boys in khaki and in blue, as well as conveying to them the assurance that a united nation stood behind them in this fight for democracy and the cause of humanity. As was well said by one of the national leaders: "We cannot furnish an enlisted man better proof of the solid backing of a closely united nation, nor can we find a better way of doubly reassuring him in his great trials, of the sincere personal interest we have in him, than by enlisting one million or more of our young people to make personal sacrifices for him."

This then, was the central idea of the Victory Campaign, as evidenced by its national slogans: "A Million Boys Behind a Million Fighters" and "Every Girl Pulling for Victory." It was emphasized from the beginning that the "Victory Boys" and "Victory Girls," would not become permanent organizations. Boys and girls who grasped this opportunity, who met this challenge to serve and sacrifice, signed—not a membership pledge in an organization—but a written promise to earn a specified sum of money and to give that sum to the United War Work Campaign for use in maintaining the morale of our fighting men, or providing them with the comforts of home. Their obligation ceases with the payment of the pledge money. Only in the sense that boys and girls have served their country in the time of its greatest need, will they remain a "Victory Boy" and "Victory Girl."

Unfortunately, a number of local conditions and circumstances, prevented this campaign from getting a proper start in Wisconsin. The result was, that an eleventh hour organization had to be effected on the eve of the opening of the general campaign to push the Victory Division in our state.

Mrs. James E. Mehan and George A. Burns of Milwaukee, were impressed into the service as state directors, with the idea and purpose of giving such aid and suggestions as could be done by bulletins, correspondence, etc. Miss Roe and Mr. Bradshaw of the general state staff worked in conjunction with Mrs. Mehan and Mr. Burns in directing the "Victory" campaign.

FORTY COUNTIES IN DRIVE

Forty of the seventy-one counties in the state featured the "Victory" campaign while reports, more or less complete, have been received from thirty-one of these. Those not reporting were organized and several communications are on file indicating at least probable active participation on their part. In some cases, no account was kept as to the number of boys and girls enrolled, the amount of money pledged being the only record available. In a few localities, teachers who understood the motives of the campaign, unfortunately insisted upon cash subscriptions, thus losing the "give and earn" feature which should have been an essential part of the drive. In a reading of the results obtained by counties, it must be remembered that the aim in this state was, "boys and girls," not money. As pointed out in the bulletins issued from the state office, emphasis was

placed on numbers rather than amount. While five dollars was suggested as a goal when local conditions made this amount too large for each individual boy or girl, two or three pupils might form groups to make this quota. Directions were emphatic not to cheapen the campaign and that every contribution represents service and sacrifice on the part of the individual.

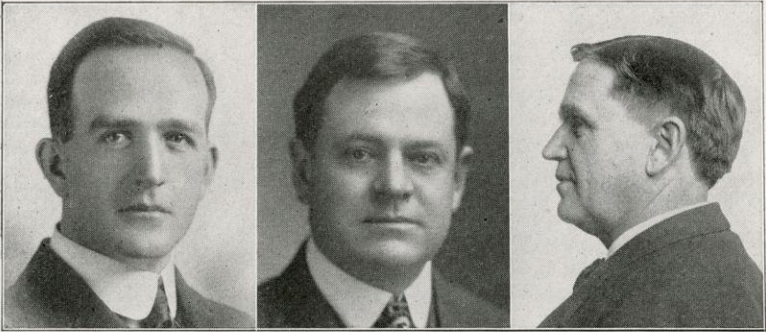
Special "Victory Boy" and "Victory Girl" buttons and window banners were given to boys and girls immediately upon enlistment and individual receipt certificates are in the possession of local leaders, to be issued upon full payment of amounts pledged by them. These will be something which the boys and girls may keep, as evidence of the part which they played in this United War Work Campaign.

This brief resume of the work cannot be closed without giving credit to the very helpful and inspiring appeal from State School Superintendent C. P. Cary, to every teacher in the counties carrying this feature of the campaign and which was a large factor in enlisting the enthusiastic interest of this important body.

Following is the tabulated report of the results by counties:

County	Quota	Boys	Amount	Girls	Boys and		Amount
					Amount	Girls	
Ashland	263	447	\$965.38	645	\$1,090.72	1,230	\$2,418.35
Brown	748	-----	-----	-----	-----	500	500.00
Calumet	202	-----	-----	-----	-----	678	2,775.65
Chippewa	385	-----	-----	-----	-----	-----	750.00
Columbia	373	-----	-----	-----	-----	235	278.40
Crawford	195	-----	-----	-----	-----	-----	835.22
Dane	928	-----	-----	-----	-----	-----	2,946.03
Dodge	569	625	-----	702	-----	1,327	1,083.20
Door	324	95	112.05	119	127.15	214	239.20
Florence	40	-----	160.50	-----	132.75	-----	295.25
Fond du Lac	619	-----	-----	-----	-----	-----	1,400.00
Forest	81	33	-----	47	-----	80	99.26
Grant	468	-----	-----	-----	-----	-----	1,975.00
Green	259	218	-----	201	-----	419	419.00
Green Lake	186	-----	-----	-----	-----	-----	740.00
Jefferson	411	-----	-----	-----	-----	224	279.25
Juneau	235	-----	-----	-----	-----	67	123.90
Kenosha	395	-----	-----	-----	-----	866	5,100.00
Kewaunee	201	-----	-----	-----	-----	-----	141.00
Marquette	129	-----	-----	-----	-----	-----	248.43
Monroe	346	486	-----	568	-----	1,054	802.55
Oconto	307	-----	-----	-----	-----	-----	1,960.00
Outagamie	589	-----	-----	-----	-----	-----	1,000.00
Portage	371	664	-----	718	-----	1,382	1,517.32
Price	165	84	430.00	118	595.00	202	1,015.00
Richland	225	-----	-----	-----	-----	-----	544.60
Rusk	133	284	-----	197	-----	481	867.51
St. Croix	311	14	-----	11	-----	25	38.00
Shawano	382	16	-----	11	-----	16	80.00
Walworth	355	17	-----	-----	-----	17	60.00
Wood	367	-----	-----	-----	-----	-----	500.00
Totals	-----	-----	-----	-----	-----	9,017	\$31,032.12

WISCONSIN DISTRICT CHAIRMEN



A. L. GOETZMAN
Chairman District 5

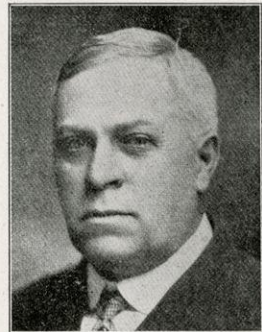
H. F. LINDSAY
Chairman District 10

I. P. WITTER
Chairman District 6

F. J. HARWOOD
Chairman District 7

A. W. KOPP
Chairman District 8
GEORGE B. WHEELER
Chairman District 2
T. J. ROTH
Chairman District 1

Photographs of F. J. Vea, chairman of district 9, and J. H. Taylor, chairman of district 4, were not obtainable.



JOHN N. MANSON
Chairman District 3

RESULTS BY DISTRICTS

Counties	Quota	Amount subscribed	Per cent subscribed
District No. 1			
Douglas -----	\$56,250	\$83,000.00	148
Bayfield -----	30,000	32,000.00	107
Ashland -----	27,000	39,338.60	146
Iron -----	7,500	9,050.00	121
Sawyer -----	3,000	1,400.00	47
Washburn -----	3,750	5,554.59	148
Burnett -----	4,500	6,000.00	134
Totals -----	\$132,000	\$176,343.19	134
District No. 2			
Eau Claire -----	\$39,750	\$56,500.00	142
Chippewa -----	33,000	40,822.88	124
Dunn -----	24,750	38,850.00	157
Pierce -----	15,000	18,622.00	124
Barron -----	27,000	27,000.00	100
Rusk -----	7,500	8,036.54	107
Pepin -----	3,000	4,550.00	152
Polk -----	9,000	13,505.00	150
St. Croix -----	19,500	28,000.00	144
Totals -----	\$178,500	\$235,886.42	132
District No. 3			
Marathon -----	\$69,750	\$92,167.50	133
Langlade -----	16,500	22,110.00	134
Lincoln -----	21,000	25,591.52	122
Oneida -----	19,500	25,935.00	133
Vilas -----	3,000	3,756.56	125
Price -----	10,500	17,580.25	168
Taylor -----	7,500	7,500.00	100
Clark -----	27,750	41,625.00	150
Totals -----	\$175,500	\$236,265.83	135
District No. 4			
Brown -----	\$75,000	\$132,000.00	176
Door -----	15,750	20,134.00	128
Kewaunee -----	16,500	19,370.00	117
Shawano -----	29,250	25,000.00	86
Oconto -----	18,750	22,881.00	122
Marinette -----	37,500	56,250.00	150
Forest -----	5,000	7,000.00	140
Florence -----	3,900	4,906.40	126
Totals -----	\$201,650	\$287,541.40	143

Counties	Quota	Amount subscribed	Per cent subscribed
District No. 5			
La Crosse -----	\$82,500	\$129,000.00	156
Trempealeau -----	21,750	22,000.00	101
Jackson -----	15,000	15,000.00	100
Monroe -----	27,000	50,076.11	185
Vernon -----	27,750	29,000.00	105
Buffalo -----	15,750	19,043.53	121
Totals -----	\$189,750	\$264,119.64	139
District No. 6			
Wood -----	\$43,500	\$69,000.00	159
Portage -----	22,500	27,500.00	122
Juneau -----	16,500	11,324.00	69
Adams -----	7,500	5,100.00	68
Waushara -----	9,000	12,429.71	138
Green Lake -----	19,500	32,240.00	165
Marquette -----	9,750	16,060.87	165
Totals -----	\$128,250	\$173,654.58	135
District No. 7			
Outagamie -----	\$69,000	\$103,000.00	150
Waupaca -----	36,000	29,500.00	82
Winnebago -----	97,500	97,500.00	100
Manitowoc -----	60,750	81,000.00	133
Fond du Lac -----	62,250	81,460.51	130
Sheboygan -----	76,500	76,500.00	100
Calumet -----	21,000	36,235.00	173
Totals -----	\$423,000	\$505,195.51	119
District No. 8			
Crawford -----	\$15,750	\$16,000.00	102
Richland -----	22,500	35,119.02	156
Grant -----	48,000	61,975.00	129
Iowa -----	37,500	38,375.00	102
Lafayette -----	40,500	27,750.00	69
Totals -----	\$164,250	\$179,219.02	109
District No. 9			
Sauk -----	\$38,250	\$50,872.50	133
Columbia -----	36,000	56,507.00	157
Dane -----	150,000	218,890.00	146
Jefferson -----	47,250	66,194.66	140
Green -----	33,750	36,016.50	107
Rock -----	90,000	119,700.00	133
Totals -----	\$395,250	\$548,180.66	139

District No. 10

Washington -----	\$29,250	\$29,250.00	100
Ozaukee -----	18,500	25,000.00	158
Waukesha -----	48,000	55,000.00	115
Milwaukee -----	1,000,000	1,317,000.00	132
Walworth -----	42,750	60,000.00	140
Racine -----	150,000	185,000.00	123
Kenosha -----	112,500	173,850.00	155
Dodge -----	45,000	65,200.00	145

Totals ----- \$1,446,000 \$1,910,300.00 132

Students (not included in above figures) \$30,000.

HOW THE MONEY ROLLED IN

100 per cent.

Green -----	12.01	A. M.	Nov. 11
Ashland -----	2.17	P. M.	Nov. 12
Green Lake -----	3.45	P. M.	Nov. 12
Washington -----	9.00	A. M.	Nov. 13
La Crosse -----	10.00	A. M.	Nov. 13
Sheboygan -----	5.00	P. M.	Nov. 13
Jackson -----	5.00	P. M.	Nov. 13
Trempealeau -----	9.15	A. M.	Nov. 14
Marinette -----	3.55	P. M.	Nov. 14
Waukesha -----	4.40	P. M.	Nov. 14
Calumet -----	8.30	A. M.	Nov. 15
Washburn -----	8.40	A. M.	Nov. 15
Eau Claire -----	9.28	A. M.	Nov. 15
Ozaukee -----	10.25	A. M.	Nov. 15
Buffalo -----	10.30	A. M.	Nov. 15
Columbia -----	3.25	P. M.	Nov. 15
Portage -----	5.00	P. M.	Nov. 15
Racine -----	5.00	P. M.	Nov. 15
Oconto -----	3.51	P. M.	Nov. 16
Jefferson -----	2.35	P. M.	Nov. 18
Waushara -----	2.58	P. M.	Nov. 18
Lincoln -----	4.20	P. M.	Nov. 18
Wood -----	5.06	P. M.	Nov. 18
Dane -----	9.00	P. M.	Nov. 18
Polk -----	2.23	P. M.	Nov. 19
Florence -----	3.00	P. M.	Nov. 19
Dodge -----	3.30	P. M.	Nov. 19,
Grant -----	4.15	P. M.	Nov. 19
Walworth -----	5.00	P. M.	Nov. 19
Fond du Lac -----	8.35	P. M.	Nov. 19
Douglas -----	9.27	A. M.	Nov. 20
Milwaukee -----	2.05	P. M.	Nov. 20
Kewaunee -----	5.30	P. M.	Nov. 20

Door	8.45 P. M.	Nov. 20
Pierce	9.00 P. M.	Nov. 20
Winnebago	9.10 P. M.	Nov. 20
Barron	9.15 P. M.	Nov. 20
Vernon	9.20 P. M.	Nov. 20
Crawford	9.50 P. M.	Nov. 20
Chippewa	9.37 P. M.	Nov. 21
Bayfield	10.00 P. M.	Nov. 21
Outagamie	3.00 P. M.	Nov. 22
Vilas	5.00 P. M.	Nov. 23
Taylor	11.40 A. M.	Nov. 25
Rusk	4.19 P. M.	Nov. 25
St. Croix	4.20 P. M.	Nov. 25
Iowa	1.15 P. M.	Nov. 27
Burnett	6.04 P. M.	Nov. 27

150 per cent.

Brown	12.01 A. M.	Nov. 11
Price	6.05 P. M.	Nov. 11
Pepin	3.30 P. M.	Nov. 12
La Crosse	6.00 P. M.	Nov. 13
Dunn	12.35 P. M.	Nov. 14
Clark	1.00 P. M.	Nov. 14
Monroe	3.08 P. M.	Nov. 14
Marquette	10.05 P. M.	Nov. 15
Green Lake	3.38 P. M.	Nov. 18
Calumet	4.45 P. M.	Nov. 18
Richland	11.30 A. M.	Nov. 19
Forest	3.00 P. M.	Nov. 19
Columbia	4.46 P. M.	Nov. 19
Wood	7.25 P. M.	Nov. 19
Polk	10.00 A. M.	Nov. 27
Outagamie	10.00 A. M.	Dec. 12

WAR CHESTS GUARANTEEING 150% QUOTA PRIOR TO CAMPAIGN

Kenosha

WAR CHESTS GUARANTEEING 100% QUOTAS PRIOR TO CAMPAIGN

Iron Langlade Manitowoc Marathon Rock Sauk Oneida

COUNTIES UNDER 100%

Adams Juneau Lafayette Sawyer Shawano Waupaca

FIGURES OF BIG DRIVE

That Wisconsin made an enviable record in the campaign is shown by the reported results in the Central Army Department, of which Wisconsin is a unit. It stands fourth in point of percentage among the fourteen states of the department. Kansas, Indiana and Michigan reported higher percentages. However, Wisconsin set the pace for Iowa, Colorado, Kentucky, Nebraska, South Dakota, North Dakota, Ohio, Missouri, Illinois and Minnesota. The departmental report follows:

State	Quota	Total P. C. of Pledges	P. C. of Quota
Kansas -----	\$1,900,000	\$2,953,353	155
Indiana -----	4,050,000	5,700,000	140
Michigan -----	5,340,000	7,323,000	137
Wisconsin -----	3,390,000	4,546,706	134
Iowa -----	4,610,000	6,062,000	131
Colorado -----	1,270,000	1,630,000	128
Kentucky -----	1,610,000	2,025,595	125
Nebraska -----	2,000,000	2,425,000	121
South Dakota -----	875,000	1,014,484	119
North Dakota -----	675,000	800,000	118
Ohio -----	10,650,000	12,200,000	115
Missouri -----	4,960,000	5,155,562	103
Illinois -----	12,740,000	13,560,000	103
Minnesota -----	3,900,000	3,368,000	86
Department -----	\$57,970,000	\$68,739,434	118

Other interesting statistics are the national results as shown in the following reports from the respective military departments:

Department	Quota	Pledged	Totals
Northeastern -----	\$14,833,500	\$19,081,613	
Eastern -----	75,020,000	78,129,017	
Central -----	57,970,000	68,739,434	
Southeastern -----	6,820,000	9,459,056	
Southern -----	5,115,000	9,356,580	
Western -----	8,525,000	10,346,300	
Army and Navy -----		618,346	
Total -----		\$192,202,038	
Foreign -----		1,842,000	
Total -----		\$194,044,038	
Expected from Philadelphia War Chest District -----		7,500,000	
Expected from other War Chest Campaigns in Pennsylvania -----		500,000	
Expected from War Chest Campaign in Minneapolis -----		1,135,000	
Grand Total -----		\$203,179,038	

CAMPAIGN VOLUNTEERS

The voluntary services of men and women throughout the state who gave so liberally and generously of their time and energy helped Wisconsin make such an enviable record. Without this whole-hearted co-operation, in which the respective volunteers received nothing but the knowledge that they were fulfilling a patriotic duty and putting their individual force back of this country's great fight for liberty and justice, the United War Work Campaign in Wisconsin could in no wise have succeeded to the remarkable degree that it did.

It is impossible in this brief review, to mention by name all those who volunteered in the state for this patriotic service; comment is necessarily restricted to those who were connected with the state and executive committee.

The influence of J. B. Winslow, chief justice of the Wisconsin supreme court, throughout the state was of inestimable value. For many years he has been one of Wisconsin's most beloved men and his activities as state chairman of the general committee did much for the ultimate success of the drive. His interview circulated through the press of the state on the eve of the campaign, which was anticipatory of peace, was a material factor in achieving the state goal.

To Emerson Ela, Madison attorney, who gave months of time from a busy legal practice, belongs great credit in making the Wisconsin campaign the unqualified success that it was. His unique driving force, his splendid executive ability and his mastery of difficult problems and unusual situations proved a combination that spelled success in Wisconsin's mightiest benevolent achievement.

Another volunteer who lent invaluable assistance was Justice M. B. Rosenberry of the Wisconsin supreme court, who was appointed to take charge of war chest and corporation subscriptions. His personality and his tireless devotion to the task at hand helped tremendously to make the state war chest counties go over the top in the splendid fashion that they did.

Professor A. B. Hall of the state university of Wisconsin, performed yeoman service in lining up the colleges and other institutions of learning. That campaign netted approximately \$85,000.00 which was a material factor in the state totals. Professor Hall gave freely of his time and earned the full gratitude of the state committee for his splendid services.

Mrs. Elizabeth M. Mehan and George A. Burns, both of Milwaukee, succeeded admirably in making the Victory Boy and Victory Girl campaign achieve such splendid results. Together with Miss Roe and Mr. Bradshaw, they pushed the work to a successful completion. They devoted valuable time to the "Victory" campaign and threw themselves whole-heartedly into the undertaking.

M. S. Dudgeon, secretary of the Wisconsin Free Library Commission and a representative of the American Library Association, officiated in a most admirable manner as chairman of the speakers' bureau. By reason of the influenza epidemic and other circumstances he was confronted with many difficulties but bridged them to the complete satisfaction of the campaign officials. His voluntary services meant much to the campaign and

he is entitled to full measure of credit for the fine part performed by the speakers' department.

Lining up the forces of Wisconsin women to a point where they worked shoulder to shoulder and in perfect accord with the men, Mrs. W. L. Roach, chairman of the women's council, achieved the objective of giving the women of the state an important part in the United War Work Campaign. The campaign officials are frank in their expression of gratitude for the fine part played by the women and Mrs. Roach performed a splendid service in helping to unify their forces.

To H. F. Lindsay of Milwaukee, state treasurer of the Y. M. C. A., who is officiating in a similar capacity in the United War Work Campaign, befalls the task of collecting approximately \$4,543,000 subscribed so generously in Wisconsin. This is a task that will require many months to complete. He was selected for this unenviable position by reason of his peculiar fitness for it. He is one of Milwaukee's leading business men and his influence and ability also had a large part in that city in raising 132 per cent of its quota. Besides his duties as state treasurer in this campaign Mr. Lindsay officiated as a district chairman of the district which raised the largest amount of all the districts in the state.

The thirteen field secretaries who assisted district and county chairmen in solidifying the various units are deserving of much credit although figures and statistics, to say nothing of actual results, are prone to overlook them. They were in a sense the "silent" factor in the campaign, yet their splendid service is deeply appreciated and fully recognized by the state headquarters. The field secretaries who served the campaign without charge to the United War Work Campaign were George F. Werner, Appleton; Wallace G. Wright, Superior; J. C. Manville, Barksdale; Joe Steiner, Beloit; Reuben F. Trane, La Crosse; W. H. Babcock, Eau Claire; W. H. Patey, Neillsville; H. F. Tormohlen, Appleton; the Rev. Henry Harris, Madison; F. O. Leiser, Madison; W. H. Wones, Milwaukee. Besides these, rendering splendid service, on the employed field force, were Mrs. Lucina G. Irish of Oak Park, Illinois, and A. S. Magann of Madison.

EMPLOYED FORCE

Louis C. Bradshaw, the capable general secretary of the Racine Y. M. C. A., who served as campaign director, devoted his best efforts to the drive. His loyalty to the great cause was a big asset to the campaign. The generosity of the Racine Y. M. C. A. in releasing him for the United War Work Campaign is appreciated by the state committee.

Miss Clara S. Roe, director of woman's work, was a young dynamo. She threw her full energy and experience into the work and to her belongs in a large measure the credit for so fully enlisting the womanhood of Wisconsin in the campaign.

Miss Marguerite M. Merriman, a young newspaper woman of Moline, Illinois, who acted as associate publicity director to Mr. Orbach, shares any credit that might be deserved by the publicity department. Her keen sense for news and her ability to put "punch" into news articles figured largely in the ready acceptance by editors of the news matter sent out from the campaign headquarters.

Miss Amanda C. Nelson, who was affiliated with Professor A. B. Hall in the student campaign, was a vital factor in the success of that drive. Prior to taking up her duties at Madison she was connected with the student division of the Young Women's Christian Association of the Central Department.

Lee C. H. Orbach—As he is the author of this non-Shakespearean effort

and as he has on occasions been accused of whetting the curiosity as a serial writer, any remarks pertaining to him will be ended with this period.

Mr. Ela insists that this shall be added to the foregoing and now, as throughout this campaign, the author takes his authoritative orders. Mr. Ela says: "I want this document to permanently record my personal appreciation of Mr. Orbach's rare ability and splendid judgment which he brought to every phase of the campaign. His services were invaluable and I fail to see how the campaign could possibly have succeeded as it did without his assistance."

COOPERATION OF PRESS

The officials of the campaign in Wisconsin are fully appreciative of the splendid coöperation of the state press. Recognizing the potent influence of the Wisconsin publications, Emerson Ela, state executive county chairman, and Lee C. H. Orbach, who directed the publicity department, addressed a formal letter of thanks to the press. The letter follows:

"December 10, 1918.

"DEAR SIR:

"In view of the splendid success of the United War Work Campaign in Wisconsin it is only fitting that your whole hearted co-operation through the generous use of your columns should be given formal recognition. Without the fine response on the part of the state press our campaign could not have been such an unqualified success. Therefore, on behalf of the state committee, we want to express to you our thanks and deep gratitude."

In the town of Arena, if a farmer is given an allotment and he does not accept it, his milk is refused at the cheese factory. He can lose more in that way in short order than if he had given his pledge without question.

Wisconsin, by its splendid oversubscription proved that it would back the boys who backed up the whole German nation. Ho, hum! The way the money rolled in!

It was too bad that W. Hohenzollern, now that he has decided to rip off the gold braid and medals from his last year's suits, could not have been induced to junk the whole for the United War Work Campaign.

Brown county, which is claimed by the state headquarters to have been the first county in the United States to report its 150 per cent, subscribed a total of \$132,000. Its original quota was \$75,000, thereby subscribing 176 per cent. It reported 151 per cent at 12.01 a. m. Monday, November 11.

Green county vies with Brown county in being first to report 100 per cent of its quota. It reported \$34,000 or exactly \$250 above its minimum quota at 12.01 a. m. Monday, November 11.

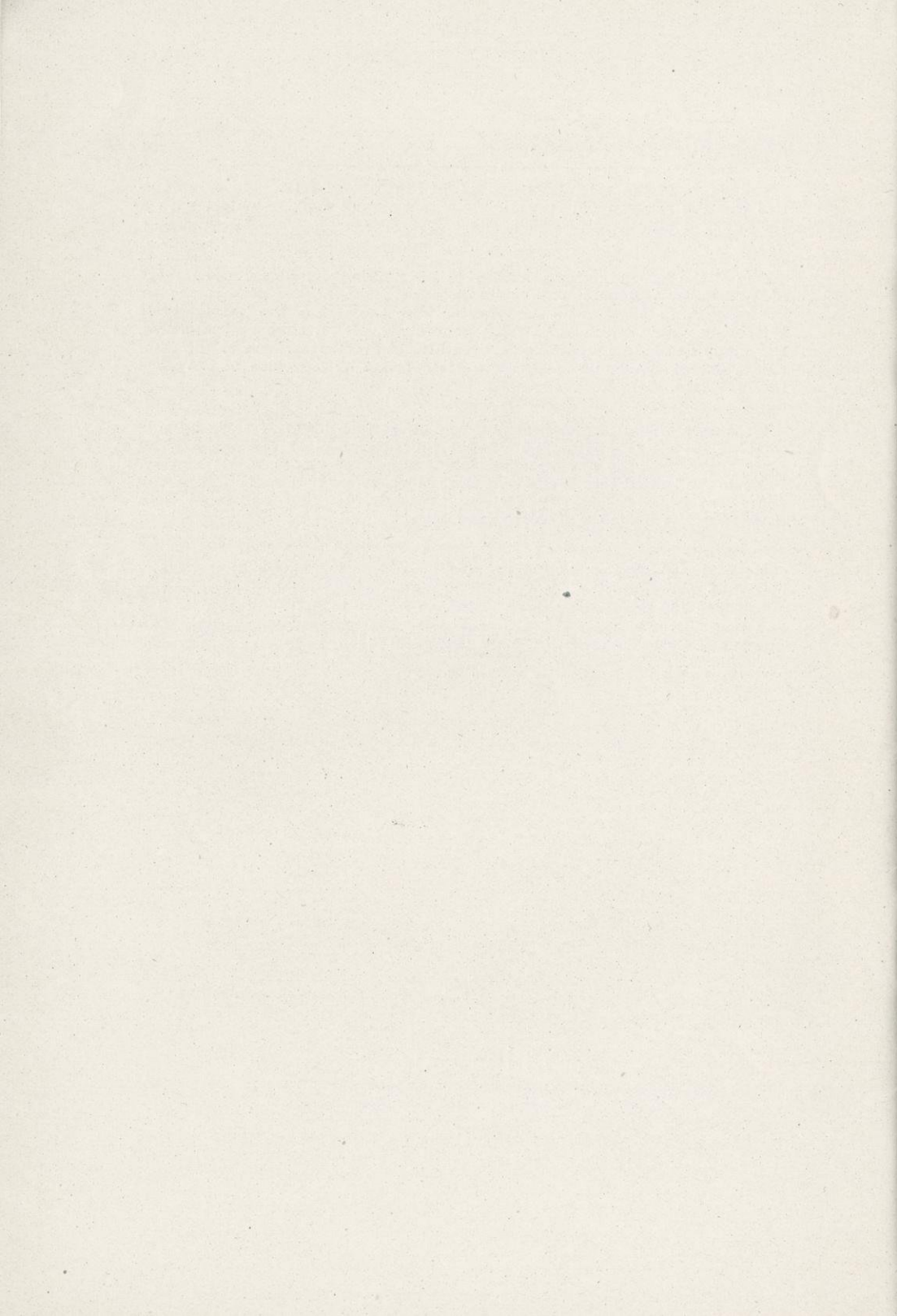
Price county gained the distinction and the unquestionable honor of being the first Wisconsin county, starting its actual campaign on the first day of the drive, November 11, to go over the top the first day. Price county reported raising not only its 100 per cent but also its 150 per cent quota at 6.05 p. m. November 11.

Indicative of the splendid response on the part of Wisconsin communities was the report from New Holstein in Calumet county, which, with a 150 per cent allotment of \$2,000, subscribed \$2,700.

One of the most striking examples of the public spiritedness and loyalty of Wisconsin residents was the assistance given at the state office by Professor A. C. Tilton, who is connected with the staff of the University of Wisconsin. Mr. Tilton gave most generously of his time and energies. For many successive weeks he devoted almost every afternoon to the campaign, during which he freely gave his services at the office of the state headquarters.

Wisconsin wound up its first post-war effort in a blaze of glory by subscribing 134 per cent of its quota in the United War Work Campaign. The state subscribed the greatest benevolent sum ever raised in its history. Prior to the United War Work Campaign Wisconsin's high mark in benevolences was \$2,250,000 in the last Red Cross drive. This was more than doubled in the United War Work Campaign.

Tabulated figures show that, of the seventy-one counties of the state, sixty-five oversubscribed their original allotments. Seventeen counties subscribed 150 per cent or more. Monroe county leads the state with 185 per cent. Brown, with 176, Calumet, with 173, Price with 168 and Marquette and Green Lake with 165 per cent each, follow in the order named.



DISTRICT AND COUNTY CHAIRMEN UNITED WAR WORK CAMPAIGN

District 1

T. J. Roth, Superior, Chairman
J. M. Waltz, Douglas County
T. F. Biers, Bayfield
Allan T. Pray, Ashland
A. L. Ruggles, Iron
H. E. Rohlf, Sawyer
M. E. Albee, Washburn
O. H. Caspers, Burnett

District 2

George B. Wheeler, Eau Claire,
Chairman
O. G. Brice, Eau Claire County
Wm. E. DeKolver, Chippewa
Hon. Al. C. Anderson, Dunn
John E. Foley, Pierce
Orrin H. Ingram, Barron
Frank Fountain, Rusk
K. K. Brainard, Pepin
N. J. Larsen, Polk
Wm. H. Phipps, St. Croix (So. H.)
T. J. McNally, St. Croix (No. H.)

District 3

J. N. Manson, Wausau, Chairman
H. C. Berger, Marathon County
E. H. Palmer, Langlade
F. J. Smith, Lincoln
C. P. Crosby, Oneida
A. J. Austin, Vilas
Asa K. Owen, Price
J. S. Landon, Taylor
Geo. E. Crothers, Clark

District 4

J. H. Tayler, Green Bay, Chairman
Dr. A. O. Olmstead, Brown County
Henry Fetzer, Door
Edward L. Wanek, Kewaunee
J. E. Scanlon, Shawano
Albert B. Burdick, Oconto
Dr. H. F. Schroeder, Marinette
S. J. Conway, Forest
Max Sells, Florence

District 5

A. L. Goetzmann, La Crosse, Chair-
man
F. W. Sisson, La Crosse County
C. B. Melby, Trempealeau
H. S. Cadby, Jackson

H. W. Jefferson, Monroe
W. F. Lindeman, Vernon
M. S. Fugina, Buffalo

District 6

I. P. Witter, Grand Rapids, Chair-
man
G. O. Babcock, Wood County
J. T. Tiffault, Wood (one-third)
Tom Hanna, Portage
C. E. Babcock, Juneau
C. A. Veeder, Adams
Vilas Follett, Waushara
H. D. Spoor, Green Lake
D. W. McNamara, Marquette

District 7

F. J. Harwood, Appleton, Chairman
Geo. F. Werner, Outagamie County
R. F. Whale, Waupaca
W. J. Wagstaff, Winnebago
George Vits, Manitowoc
Ed. A. Kremer, Fond du Lac
Walter Kohler, Sheboygan
Alfred T. Hipke, Calumet

District 8

A. W. Kopp, Platteville, Chairman
W. R. Graves, Crawford County
Rev. J. T. Mordy, Richland
R. M. Orchard, Grant
J. W. Hutchison, Iowa
W. W. Woolworth, Lafayette

District 9

F. J. Vea, Stoughton, Chairman
F. R. Bentley, Sauk County
Fred A. Chadbourn, Columbia
Andrew W. Hopkins, Dane
D. Q. Grabill, Jefferson
P. F. Neverman, Green
Alex. E. Matheson, Rock

District 10

H. F. Lindsay, Milwaukee, Chairman
E. C. Schauer, Washington County
W. F. Schannen, Ozaukee
E. R. Estberg, Waukesha
H. F. Lindsay, Milwaukee
Hon. Jay F. Lyon, Walworth
F. Lee Norton, Racine
C. S. Judd, Kenosha
A. W. Wilcox, Dodge

Uncle Sam Calls 'Em Pals

Notables at Wisconsin Convention of United War Work Campaign, as they were pictured at Milwaukee.



—By courtesy of Milwaukee Journal