



LIBRARIES

UNIVERSITY OF WISCONSIN-MADISON

The 1945 meletean. Vol. 34 1945

[River Falls, Wis]: [Wisconsin State University, River Falls], 1945

<https://digital.library.wisc.edu/1711.dl/23FQSF6EQ7IJF8P>

This material may be protected by copyright law (e.g., Title 17, US Code).

For information on re-use, see

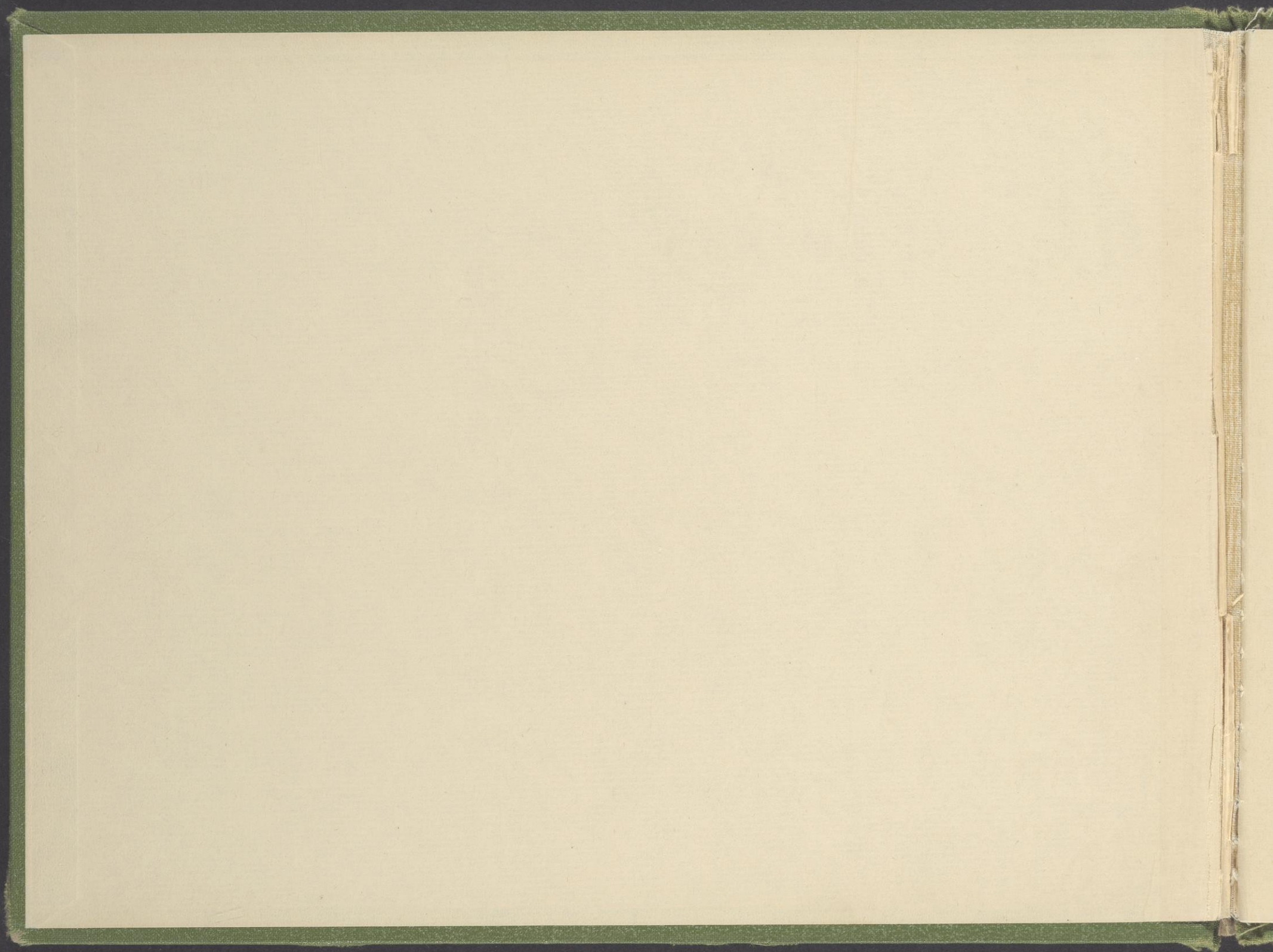
<http://digital.library.wisc.edu/1711.dl/Copyright>

The libraries provide public access to a wide range of material, including online exhibits, digitized collections, archival finding aids, our catalog, online articles, and a growing range of materials in many media.

When possible, we provide rights information in catalog records, finding aids, and other metadata that accompanies collections or items. However, it is always the user's obligation to evaluate copyright and rights issues in light of their own use.

LH
1
.R5
M4
1945

The 1945
MELLETAN





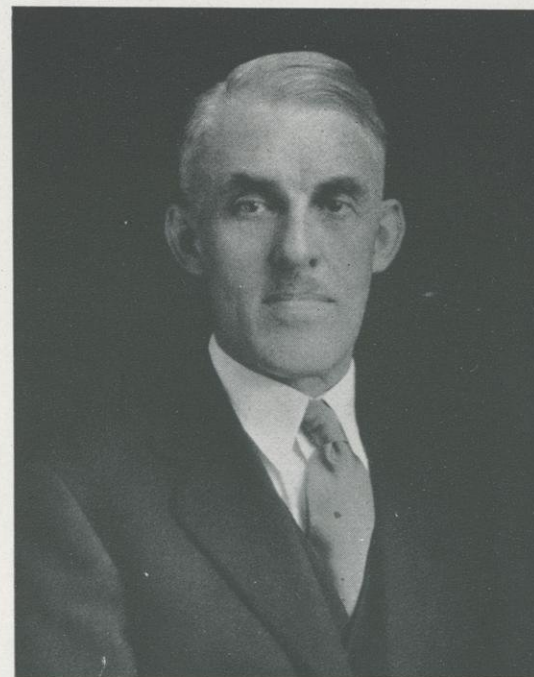
The 1945 Meletean

Published by the students of the
STATE TEACHERS COLLEGE
RIVER FALLS, WISCONSIN
VOLUME 34

Board of Regents

OFFICERS

EDWARD J. DEMPSEY	-	-	-	-	-	-	President
EDGAR G. DOUDNA	-	-	-	-	-	-	Secretary
JOHN M. SMITH	-	-	-	-	-	-	State Treasurer



PRESIDENT J. H. AMES

PERSONNEL

EDWARD J. DEMPSEY	-	-	-	-	-	-	Oshkosh
JOHN CALLAHAN, State Superintendent, ex-officio	-						Madison
MRS. ROBERT C. EBY	-	-	-	-	-	-	Madison
ELTON S. KARRMANN	-	-	-	-	-	-	Platteville
DR. S. N. SUNDQUIST	-	-	-	-	-	-	Superior
JAMES A. RICHARDS	-	-	-	-	-	-	River Falls

PETER J. SMITH	-	-	-	-	-	-	Eau Claire
WILSON DELZELL	-	-	-	-	-	-	Stevens Point
MRS. DORRIS D. MARKS	-	-	-	-	-	-	Milwaukee
DWIGHT M. WARNER	-	-	-	-	-	-	Whitewater
ROY C. DAVIDSON	-	-	-	-	-	-	La Crosse



JOHN M. MAY
Agricultural Education



ROY E. SPRIGGS
Agricultural Engineering

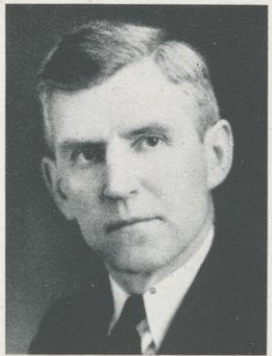


RUDOLPH A. KARGES
Chemistry



MARGARET C. EIDE
Mathematics

Faculty



E. J. PRUCHA
Agronomy, Registrar



WILLIAM SEGERSTROM
Manual Arts



JAMES P. JACOBSON
Physics



GLEN P. JUNKMAN
Mathematics



CHARLES G. STRATTON
Geography, Geology,
Dean of Men



IRMA HATHORN
Education, Dean
of Women



ARTHUR N. JOHNSON
Animal Husbandry



CLYDE B. CAMPBELL
Teacher Training in
Agriculture



BENJAMIN H. KETTELKAMP
Zoology



CATHARINE LIENEMAN
Botany



MABEL F. ARBUTHNOT
Latin, French



ERNST JURGENS
German, Philosophy



WALKER D. WYMAN
American History
and Government



VERA M. MOSS
English



ALBERTA M. GREENE
Art



RHEA GIBSON
Librarian

Faculty



MAUD A. LATT
European History



ELSIE F. HOFFMANN
Speech and English



B. LOUISE HILDER
Art in the Training
School



MARY BRADLEY
Assistant Librarian



MARVIN D. GEERE
Music



INGWELDE PFITZNER
Music, Band and
Orchestra



CARLETON C. AMES
Social Science



GERALD M. MANION
Physical Education
Director of Athletics



O. W. SJOWALL
Health and Physical
Education



AMY FULLER
Assistant Librarian



CARA AMELIA WHARTON
Piano



FERN SWANKE, R.N.
College Nurse

Faculty



RUSSELL JOHNSTON
Education, Director
Teacher Training



MABEL JORSTAD
Rural Education



NATHALIE DELANDER
Secondary Education,
Social Science



LILLIAN R. HOFFMANN
Secondary Education,
English



MABEL L. BRIDGES
Elementary Education



GLADYS M. ZAK
Elementary Education



AUGUSTA M. THOMAS
Elementary Education



ADELINE C. PATTON
Elementary Education



LURA CARRITHERS
Elementary Education

ALMA W. GILBERT
Physical and Health
Education

GENEVIEVE LICHTENSTEIN
Physical and Health
Education

ETHEL WEST
Secretary

MIRIAM SHEPARD
Recorder

ESTHER MURPHY
Secretary, Training
Department

ARLITH SCHNEIDER
Stenographer

Faculty in the Armed Forces

MARY LOUISE BRANSTAD
CHESTER L. EGGERT
HELEN LOEB

JOHN G. MOSHER
B. J. ROZEHNAL
THEODORE SETTERQUIST
JUSTIN WILLIAMS

Seniors 1945



BETTY AASTERUD—English, History, and Latin - - - - - **SPRING VALLEY**
Honor Society 3, 4; Language Club 1, 2, 3, 4; Sigma Chi Sigma 2, 3, 4; W.A.A. 1; Y.W.C.A. 1, 2, 3, 4; Class President 3; Debate 2; Student Voice 1, 2, 3, 4; Editor 3, 4; Homecoming Committee 4; Student-Faculty Relations 3, 4; Student Senate 3, 4, Vice-President 4; Who's Who in American Colleges 3.

EDWARD AUSDERAU—Agricultural Education and Science - - - - - **COLFAX**
Platteville State Teachers College 1; F.F.A. 2; Honor Society 3, 4, Vice-President 4; Y.M.C.A. 3, 4, Vice-President 4; Class President 4; Football 3, 4; Tennis 2; Volleyball 4; 1945 Meletean; Student Senate 4.

MARGARET DAVIS—Elementary Education, Art, and Science - - - - - **HAYWARD**
Northland College 1, 2; A.C.E. 2, 3; W.A.A. 3; Y.W.C.A. 4; Band 1, 2; Chorus 1, 2, 3, 4; Octet 3, 4; Student Voice 3.

JEAN ERLANDSON—English, History, and French - - - - - **RIVER FALLS**
Masquers 2, 3, 4, Treasurer 3; W.A.A. 1, 2; Y.W.C.A. 1; "The Kleptomaniac" 2; "Lost Horizon" 2; Homecoming Committee 2.

BARBARA HARRIS—English, History, and Latin - - - - - **RIVER FALLS**
Honor Society 1, 2, 3, 4, President 4; Language Club 1, 2, 3, 4, Vice-President 2; Sigma Chi Sigma 2, 3, 4, Secretary 4; Y.W.C.A. 1, 2, 3, 4, Cabinet 4; Class Secretary 1; Chorus 1; A Cappella Chorus 2; Sextet 1, 2; Octet 3, 4; 1945 Meletean; Student Voice 2, 3, 4, Associate Editor 4; Student-Faculty Relations 4; Student Senate 3, 4; Who's Who in American Colleges 2.

ELEANOR HAYES—History, English, and Latin - - - - - **RICE LAKE**
Honor Society 4; Language Club 1, 2, 3, 4, President 3; Sigma Chi Sigma 2, 3, 4, Treasurer 3, 4; W.A.A. 1, 2, Point Chairman 2; Class Secretary-Treasurer 3; 1945 Meletean, Editor; Homecoming Committee 2.

MERLE HUNTER—Elementary Education, History, and English - - - - - **Hudson**
A.C.E. 1, 2, 3, 4; Palette Club 4; W.A.A. 1, 2; Y.W.C.A. 1, 2, 3, 4; Class Secretary 4; Co-ed Band 1.

REUBEN JOHNSON—Agricultural Education and Science - - - - - **GRANTSBURG**
F.F.A. 1, 2; Y.M.C.A. 1, 2, 3, 4, Treasurer 3, President 4; Football 3; Volleyball 1, 2; 1944, 1945 Meletean, Business Manager; Assembly Program Committee 1; Homecoming Committee, Chairman; Party Committee 3, 4; Student-Faculty Relations 4; Student Senate 4, Treasurer 4.

MARIE KLETT—Science, Mathematics, and English - - - - - **PRESCOTT**
Sigma Chi Sigma 3, 4; Co-ed Band 1; Chorus 1, 2, 3, 4; Party Committee 4, Chairman.

DORIS LANDBERG—English and History - - - - - **GLENWOOD CITY**
Language Club 4; Sigma Chi Sigma 2, 3, 4; Y.W.C.A. 1, 2, 3, 4; Class Treasurer 4.

JEAN LARSON—Elementary Education, Music, and Art - - - - - **SPRING VALLEY**
A.C.E. 1, 2, 3, 4, President 3, 4; Honor Society 4; Sigma Chi Sigma 2, 3, 4, Secretary 3; Y.W.C.A. 1, 2, 3, 4, Cabinet 3, 4; Class Secretary 3; Band 1, 2, 3, 4; Orchestra 2, 3, 4; Co-ed Band 1, Piano Quartet 4; Glee Club 1, 3; 1943, 1944 Meletean; Homecoming Committee 2, 3, 4.

MARION LYNCH—Elementary Education, English, and Music - - - - - **AMERY**
Stout Institute 1; A.C.E. 2, 3, 4; Y.W.C.A. 2, 3.

Seniors 1945

NONA McCOLLOW—Elementary Education, Art, and Geography - - - **RIVER FALLS**
Honor Society 4; Masquers 1, 2, Secretary 2; Midgardians 1, 2, 4; Sigma Chi Sigma 2, 4; W.A.A. 1; Class Vice-President 4; "Cry Havoc" 3; Student Voice 1, 2, Co-Editor 2; Homecoming Committee 2; Student-Faculty Relations 2, 4; Student Senate 1, 2, 4, Vice-President 2, 4.

RUTH HOLT O'BRIEN—Elementary Education - - - **ELMWOOD**
Honor Society 3, 4; Midgardians 2, 3, 4, President 4; Palette Club 2, 3, 4, Secretary-Treasurer 3; Sigma Chi Sigma 4; Y.W.C.A. 1, 2, 3, 4.

JOSEPH OTT—Biological Science, History, and Geography - - - **CHILTON**
"R" Club 2, 3, 4; Baseball 2, 3, 4; Football 2, 3.

KATHRYN SNEESBY—Biological Science, English, and French - - - **BERLIN**
Honor Society 1, 2, 3, 4; Language Club 2; Sigma Chi Sigma 2, 3, 4; W.A.A. 1, 2, President 2; Y.W.C.A. 1, 2, 3, 4, President 4; Vice-President 3; Cabinet 2, 3, 4; Class President 2; Women's Chorus 1; "Blackout Mystery" 1, "Cry Havoc" 2; Homecoming Committee 1, 3, 4; Party Committee 1; Student-Faculty Relations 3, 4; War Council 2; Student Senate 2, 3, 4, President 3; Who's Who in American Colleges 2.

ILO STEWART—Elementary Education, English, and Social Science - - - **LADYSMITH**
Rusk County Normal 1, 2; Honor Society 4; Midgardians 4; Y.W.C.A. 4, Cabinet 4; A Cappella Chorus 4.

VIRGINIA STRONKS—Elementary Education, Music, and Art - - - **BALDWIN**
A.C.E. 1, 2, 3, 4, Treasurer 3, 4; Honor Society 1, 2, 3, 4; Palette Club 1; Sigma Chi Sigma 2, 3, 4, President 4; W.A.A. 1; Y.W.C.A. 1, 2, 3, 4, Treasurer 3; Class Treasurer 2; Tennis 1, 2; Band 1, 2; Chorus 4; Octet 4; Student Voice 1; Homecoming Committee 2, 3; Student-Faculty Relations 3, 4; War Council 2, 3; Student Senate 2, 3, 4, President 3; Who's Who in American Colleges 3.

FAY SWANKE—Elementary Education, Art, and Geography - - - **NEW RICHMOND**
Honor Society 3, 4; Midgardians 1, 2, 3, 4; Sigma Chi Sigma 3, 4; Y.W.C.A. 1, 2, 3, 4; Band 1, 2.

DELOISE TRINDLE (BAKER)—Elementary Education, Art, and History - - - **NEW RICHMOND**
Palette Club 1, 2, 3, 4; Y.W.C.A. 1, 2, 3, 4.

GERALDINE WENZEL—Biological Science, Mathematics, and Social Science - - - **RIVER FALLS**
Whitewater State Teachers College 2; Honor Society 3, 4; Mathematics Club 4; Science Club 3; W.A.A. 1; Y.W.C.A. 1; Volleyball 1.



SENIOR OFFICERS

EDWARD AUSDERAU	-	-	-	-	President
NONA McCOLLOW	-	-	-	-	Vice-President
MERLE HUNTER	-	-	-	-	Secretary
DORIS LANDBERG	-	-	-	-	Treasurer



JUNIOR OFFICERS

GLADYS LEADHOLM - - - - President
 LOIS BERND - - - - Vice-President

Juniors 1945

MADOLYN ANDERSON—Elementary Education - - - - - **MAIDEN ROCK**
 A.C.E. 1, 2, 3; Palette Club 1; Rural Life Club 1, 2; Sigma Chi Sigma 2, 3; Y.W.C.A. 1, 2, 3,
 Vice-President 2, President 3; Women's Chorus 1; Student Voice 1, 2, 3.

FRANCES BERGER—Elementary Education, English and Science - - - - - **BARRON**
 Honor Society 3; Y.W.C.A. 1, 2, 3, Program Chairman 2, Treasurer 3; Women's Chorus 1; Student
 Voice 1, 2, 3, Editor 3.

LOIS BERND—English, Music, and History - - - - - **NEW RICHMOND**
 Language Club 2; Masquers 1, 2, 3, Vice-President 2, President 3; Sigma Chi Sigma 2, 3;
 Y.W.C.A. 1, 2, 3; Class Vice-President 3; Chorus 1, 2, 3; Orchestra 1; Septet 2; Octet 3; "Lost
 Horizon" 1, "Mystery Blackout" 1, "The Kleptomaniac" 2, "Ladies in Retirement" 3.

MARIE CHRISTENSEN—Elementary Education - - - - - **AMERY**
 A.C.E. 2, 3; Sigma Chi Sigma 2, 3; W.A.A. 1; Y.W.C.A. 1, 2, 3, Cabinet 2; Midgardians 1;
 Assembly Program Committee 1; War Council 2.

GRACE CHURCHILL—Elementary Education, English, and History - - - - - **ROCK ELM**
 Midgardians 1, 2, 3; W.A.A. 1, 2; Y.W.C.A. 1, 2, 3, Cabinet 2, 3.

BETTY GREENFIELD—Science, Mathematics, and English - - - - - **RIVER FALLS**
 Mathematics Club 3.

ALFRED HARTUNG—Agricultural Education, Science, and Mathematics - - - - - **PLUM CITY**
 Class Secretary 3; Football 1.

MARY FRANCES HAWKINS—Elementary Education, Geography, and Art - - - - - **ROBERTS**
 Masquers 1, 2, 3, Treasurer 3; Midgardians 1, 2, 3; Chorus 1.

GLENN HENDRICKSON—Chemistry, Mathematics, and German - - - - - **RIVER FALLS**
 Honor Society 1, 2, 3; Language Club 1; "R" Club 1, 2, 3; Y.M.C.A. 1, 2, 3, Cabinet 1, 2, 3,
 Treasurer 2, 3; Football 1, 2, 3.

ANNA MAE HOSEID—Elementary Education, Geography, and Art - - - - - **RIVER FALLS**
 A.C.E. 1, 2, 3, Secretary 3; Honor Society 3; Y.W.C.A. 1, 2, 3, Cabinet 2, 3; Class Secretary-
 Treasurer 3; Band 1, 2, 3; Homecoming 3; Junior-Senior Banquet 3; Sigma Chi Sigma 3.

MAXINE HUPPERT—Elementary Education - - - - - **HAGER CITY**
 A.C.E. 1, 2, 3; Masquers 1, 2, 3; Women's Chorus 1; "The Kleptomaniac" 2; "Ladies in Retirement" 3.

GLADYS LEADHOLM—Elementary Education - - - - - **AMERY**
 A.C.E. 1, 2, 3; Sigma Chi Sigma 2, 3; W.A.A. 1, 2, 3, Secretary-Treasurer 2, President 3;
 Y.W.C.A. 1, 2, 3, Cabinet 2, 3; Class President 3; Piano Quartet 2, Homecoming 3; Party Com-
 mittee 2, 3; Student Senate 3.

MYRTLE MARKEE—Elementary Education - - - - - AMERY

LOUISE MELBYE—English, History, and German - - - - - CAMERON
Honor Society 1, 2, 3, President 3; Language Club 2, 3; Y.W.C.A. 1, 2, 3; Debate 3; 1945
Meletean; Student Voice 1, 2, 3.

MARILYN MERCORD—English, History, and Music - - - - - PRESCOTT
Language Club 2, 3, President 3; Masquers 1, 2, 3, Vice-President 3; Chorus 1, 2; A Cappella
Chorus 1, 2, 3; Octet 2, 3; "Cry Havoc" 2, "The Kleptomaniac" 2; Homecoming 2, 3, Queen 3;
Party Committee 3; Student Senate 3.

LOIS MEULEMANS—English, History, and Music - - - - - GLENWOOD CITY
Honor Society 2, 3; Language Club 2, 3, Vice-President 3; Masquers 1, 2, 3; A Cappella Chorus
3; Women's Chorus 1; Band 1; "The Kleptomaniac" 2.

HELEN OLESKOW—Unclassified - - - - - WEYERHAUSER

MARY PAULSON—English, History, and French - - - - - CLEAR LAKE
Language Club 2, 3; Y.W.C.A. 1, 2, 3; Student Voice 2,3.

BETTE REID - - - - - EVELETH, MINNESOTA
College of St. Scholastica 1.

DONALD SANDVE—History and Biological Science - - - - - BARRON
Language Club 1; Y.M.C.A. 2, 3, Cabinet 2, 3; Class Secretary 1; Intramural Sports 3; Student
Voice 2, 3; Service Flag Committee 2, 3.

SHIRLEY SCHILLBERG—Junior High School, Art, and History - - - - - OSCEOLA
Honor Society 2, 3; Language Club 2, 3; Palette Club 1, 2, Cabinet 2; Y.W.C.A. 2, 3; Women's
Chorus 1, 2, President 2; A Cappella Chorus 2, 3.

MARY SOMSEN—Elementary Education, Music, and English - - - - - BALDWIN
Midgardians 1, 2, 3; Sigma Chi Sigma 3; Class Secretary 2; Band 1; Chorus 1, 2, 3; Octet 3;
Assembly Program 3.

SHIRLEY WIFF—History, English, and Music - - - - - SPRING VALLEY
Language Club 1, 2, 3, Secretary 2; Sigma Chi Sigma 2, 3, Vice-President 3; Y.W.C.A. 1, 2, 3,
Secretary 3; Women's Chorus 1, 2; A Cappella Chorus 2, 3; Octet 3; 1945 Meletean; Student
Voice 3; Homecoming 2.



JUNIOR OFFICER

ELEANOR HAYES

Secretary-Treasurer



Sophomores 1945

SHIRLEY ANDERSON—Rural	- - - - -	RIVER FALLS
HELEN BURKE—Rural	- - - - -	ELMWOOD
EVELYN COCHRAN—Rural	- - - - -	ROBERTS
BETH DAVIS—Unclassified	- - - - -	HAYWARD
BETTY DODGE—Elementary	- - - - -	RIVER FALLS

MARY FINKE—Rural	- - - - -	SPRING VALLEY
VERA LOUISE FINSTAD—Elementary	- - - - -	RIVER FALLS
JANE GIBSON—Rural	- - - - -	CYLON
ELOISE GILBERTSON—Rural	- - - - -	CLEAR LAKE
RITA GILLIS—Rural	- - - - -	GLENWOOD CITY

DOROTHY GRANT—Rural	- - - - -	SPRING VALLEY
VIOLA HALVERSON—Elementary	- - - - -	RIVER FALLS
YOULAN HANSON—Elementary	- - - - -	BALDWIN
FRANCES HARRIGAN—Rural	- - - - -	MAIDEN ROCK
MARY HENNESSY—Rural	- - - - -	CYLON

HELEN HOLT—Rural	- - - - -	ELMWOOD
EILEEN HOVDA—Rural	- - - - -	CLEAR LAKE
HILDEGARDE HUPPERT—Elementary	- - - - -	RIVER FALLS
RUTH HURTH—Rural	- - - - -	CADOTT
DORIS JACKELEN—Rural	- - - - -	GLENWOOD CITY

ALBERTINE JACOBSON—Rural	- - - - -	WOODVILLE
MARION JACOBSON—Elementary	- - - - -	HAMMOND
DOROTHY JENNINGS—Unclassified	- - - - -	RIVER FALLS
ARLIS JOHNSON—Rural	- - - - -	WILSON
ALICE KIEKHOFER—Rural	- - - - -	NEW RICHMOND

SOPHOMORE OFFICERS

EUGENE WIRZ	- - - - -	President
MARJORIE LYNCH	- - - - -	Vice-President

Sophomores 1945

MARY ALICE KIRCHNER—Rural	- - - - -	RIVER FALLS
JEAN KOLLING—Rural	- - - - -	RIVER FALLS
LOIS LANDBERG—Secondary	- - - - -	GLENWOOD CITY
MAE ONA LEE—Rural	- - - - -	PRAIRIE FARM
MARJORIE LYNCH—Secondary	- - - - -	NEW RICHMOND

AUDREY McCLEARY—Rural	- - - - -	MAIDEN ROCK
HOPE METCALFE—Secondary	- - - - -	ARKANSAW
PHYLLIS MYHRE—Unclassified	- - - - -	STANLEY
PATRICIA NELSON—Elementary	- - - - -	CUMBERLAND
BETTY PETERSON—Rural	- - - - -	BALDWIN

JAMES REDMOND—Agriculture	- - - - -	ARPIN
REBECCA REES—Secondary	- - - - -	ROCK SPRINGS, WYOMING
LOUELLYN REISS—Secondary	- - - - -	DEERPARK
DORIS SCHROEDER—Rural	- - - - -	PRESCOTT
MILLCENT SKONE—Secondary	- - - - -	CUSHING

JOYCE STRAUB—Elementary	- - - - -	ELLSWORTH
SYLVA SWENSON—Elementary	- - - - -	SPRING VALLEY
LORRAINE THANNUM—Elementary	- - - - -	HAYWARD
LEONA VON KUSTER—Elementary	- - - - -	ROBERTS
MARGUERITE WAGNER—Rural	- - - - -	SPRING VALLEY

JANIS WALTON—Rural	- - - - -	DOWNING
EUGENE WIRZ—Secondary	- - - - -	RICE LAKE
LEONA WOHLK—Elementary	- - - - -	ALMENA

SOPHOMORE OFFICERS

BETH DAVIS	- - - - -	Secretary
REBECCA REES	- - - - -	Treasurer





Freshmen 1945

HARRIET ADAM—Secondary	- - - - -	NYE
VANITA ADAMS—Rural	- - - - -	WILSON
CARMEN ALMS—Rural	- - - - -	SPRING VALLEY
PHYLLIS ANDERSON—Secondary	- - - - -	BALDWIN
MARGUERITE BAIRD—Elementary	- - - - -	RIVER FALLS

JAMES BARBEE—Unclassified	- - - - -	RICE LAKE
BETTE BERGQUIST—Rural	- - - - -	NEW RICHMOND
BENORA BJORNSON—Secondary	- - - - -	SPRING VALLEY
BERNICE BLOK—Rural	- - - - -	HAMMOND
WINNIE BOLES—Unclassified	- - - - -	RIVER FALLS

ARLYN BRED AHL—Elementary	- - - - -	BELDENVILLE
WALLACE BREY—Agriculture	- - - - -	GREENWOOD
BONNIE CARTER—Unclassified	- - - - -	RIVER FALLS
JANET CLARK—Secondary	- - - - -	OSCEOLA
AUDREY CORCORAN—Elementary	- - - - -	PRESCOTT

WILLIAM CROMMETT—Unclassified	- - - - -	AMERY
LOUIS DANIEL—Agriculture	- - - - -	RIVER FALLS
CLARENCE DIMICK—Unclassified	- - - - -	ALMENA
BERNARD DONKERSGOED—Agriculture	- - - - -	BALDWIN
LOIS DuBOIS—Rural	- - - - -	NEW RICHMOND

IONE ENGEN—Unclassified	- - - - -	FREDERICK
RUTH ERICKSON—Elementary	- - - - -	STOCKHOLM
LILA ESTENSON—Secondary	- - - - -	NEW RICHMOND
LOLA ESTENSON—Secondary	- - - - -	NEW RICHMOND
DEAN FENNER—Unclassified	- - - - -	RICE LAKE

FRESHMAN OFFICERS

SAMUEL YOUNG	- - - - -	President
WALLACE HITT	- - - - -	Vice-President

Freshmen 1945

PATRICIA FREY—Unclassified	ROBERTS
JUNE GEDATUS—Rural	GLENWOOD CITY
LILLIAN GERAETS—Secondary	ELMWOOD
FAITH GRIFFITH—Unclassified	RIVER FALLS
FRANCES GUND—Secondary	HUDSON

ELAINE HAGEN—Unclassified	NYE
VERNE HAGEN—Rural	AMERY
SILVIA HAUGEN—Unclassified	HAMMOND
JOHN HAYES—Unclassified	CUMBERLAND
TERRENCE HAYES—Unclassified	CUMBERLAND

BERNICE HENDRICKSON—Unclassified	RIVER FALLS
WALLACE HITT—Secondary	ALMA
MARION HOPE—Elementary	HUDSON
LOIS HUNTER—Secondary	RIVER FALLS
DONNA HYDE—Elementary	RIVER FALLS

DORIS JACKMAN—Secondary	RIVER FALLS
DARLENE JENNINGS—Unclassified	RIVER FALLS
WARREN JOHNSON—Unclassified	BARRON
ETHYL JONES—Unclassified	CLEAR LAKE
JOYCE JULIAN—Unclassified	MAIDEN ROCK

DOROTHY KEALY—Rural	HUDSON
ELMER KILLIAN—Agriculture	GREENWOOD
SHIRLEY LALAN—Unclassified	WEYERHAUSER
JOHN LARSON—Unclassified	NEW AUBURN
MARJORIE LARSON—Unclassified	SPRING VALLEY

FRESHMAN OFFICERS

PATRICIA FREY	Secretary
ROBERT KESSENICH	Treasurer





Freshmen 1945

ANN LAUFENBERG—Unclassified - - RIVER FALLS
 AUDREY LINDER—Rural - - - SPRING VALLEY
 HARRIET LONG—Unclassified - - - RIVER FALLS
 LORRAINE McCUE—Unclassified - - - RIVER FALLS
 EUGENIA MARTO—Rural - - - ARKANSAW
 RUTH MELLUM—Rural - - - GLENVILLE, MINNESOTA

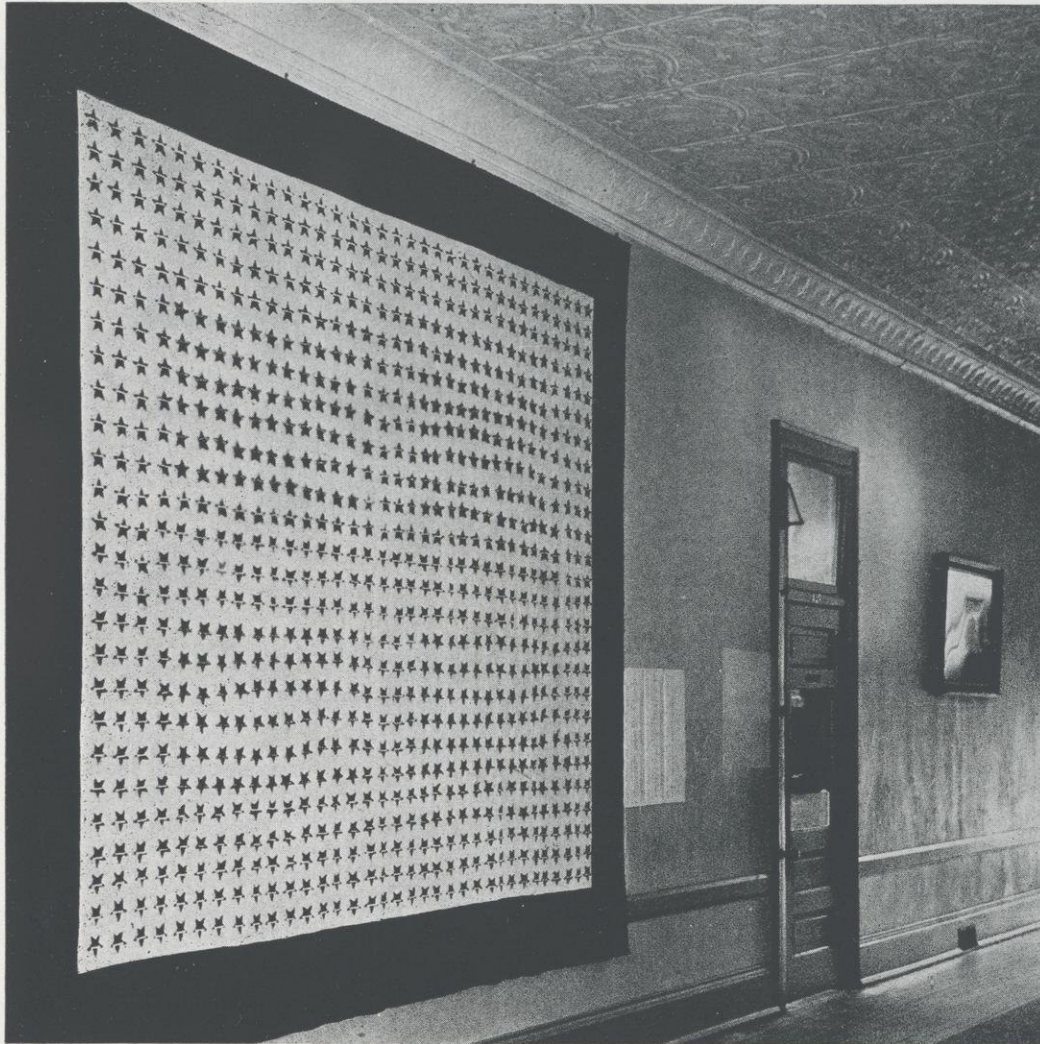
ALICE MEULEMANS—Rural - - - GLENWOOD CITY
 BETTY MYERS—Secondary - - - - - KNAPP
 LAURENCE NIEDZWIECKI—Agriculture - - - POLASKI
 BETTY PATTERSON—Unclassified - - - MINONG
 DELORES PAYSON—Unclassified - - - HUDSON
 BERNADINE PELOQUIN—Secondary - - - CADOTTE

MAXINE PENCE—Unclassified - - - SPRING VALLEY
 MERLE PENMAN—Unclassified - - - HUDSON
 GENEVIEVE PETERSON—Unclassified - - - RIVER FALLS
 EVELYN REITON—Rural - - - - - BALDWIN
 OVIA RICE—Secondary - - - - - EYOTA, MINNESOTA
 PAUL ROGNESS—Agriculture - - - - - ETTRICK

ONA SABBY—Secondary - - - - - BALDWIN
 KATHLEEN SCHOEDER—Rural - - - - - ELMWOOD
 NORMA SIMPSON—Unclassified - - - RIVER FALLS
 PRISCILLA SKANE—Rural - - - - - MAIDEN ROCK
 ELAINE STUCKY—Unclassified - - - - - RICE LAKE
 MARGARET TORGERSON—Rural - - - - - PRAIRIE FARM

MARJORIE UBER—Unclassified - - - GLENWOOD CITY
 SHIRLEY VENNES—Rural - - - - - WHEELER
 PHYLLIS WAGNER—Secondary - - - - - RIVER FALLS
 EDITH WHITAKER—Elementary - - - - - CHETEK
 MARY WILKINS—Unclassified - - - - - RIVER FALLS
 SAMUEL YOUNG—Unclassified - - - - - AUGUSTA

***"That this government of the people, by the people,
and for the people shall not perish from the earth"***



GOLD STARS

Alvin Anderson
Robert Boernke
Burton Boettcher
Earle Boettcher
Robert Busby
Duane Cornell
Carl Dahl
Duane Doolittle
Lester Dyer
Imbert Eslinger
James Flathe
John Frank
Charles Ganske
Thomas Gill
Eugene Gossen
Walter Guinn
Richard Hylkema

Rupert Isaacson
Gordon Jackman
Donald Johnson
Voyle Johnson
Robert McCabe
Robert Mraz
Stanley Palm
Elmer Parnell
John Person
Ward Randles
John Rockwell
Malcolm Rockwell
Jerome Sobotta
Keith Solveson
Robert Thoreson
Stanley Torgerson
Frank Winterling



FOOTBALL SQUAD—Back Row: Kassera, Fruch, Fenner, Hitt, Hendrickson, Neidermire, Hanna, Hayes, Moody. Middle Row: Coach Manion, Ausderau, Barbee, Stone, Young, Redmond, E. Smith, Lindstrom, Passow, Assistant Coach Sjowall. Front Row: Johnson, Hanvelt, Wick, Scolman, Wirz, R. Smith, Wright, Dimick, Rose, Rudoll. In Front: Kessenich, Gavis, Managers.

Football

In spite of the difficulty in scheduling games and the continued manpower shortage, River Falls was again represented on the gridiron in 1944. The football squad consisted mainly of freshmen, several of whom lacked even high school football experience. Only three lettermen returned from last year's squad.

With this material the Manion-men opened the season at Ramer Field against a Navy-bolstered St. Olaf team composed largely of former college stars. The Oles used their weight and experience advantage to win by a 20-0 count.

The Falcons got into the win column against the Red Wing Training School eleven in the second home game of the season, 33-12. River Falls scored early and was never in danger, although the Trainers' diminutive halfback, Kuhn, was a constant scoring threat.

In the next encounter the opposition was furnished by the undefeated Margaret Boosters Team, semi-pro league champions from St. Paul. Their rugged, well-balanced outfit dominated play through most

of the game to win 25-7. Hitt scored for the Falcons on a neatly executed quarterback play.

The final game of the season was played at Northfield against a powerful St. Olaf club that had been running rough-shod over other Navy-strengthened teams in the latter part of the season. The Oles' tricky reverses and effective down-field blocking gave them several long scoring dashes and an easy 66-6 victory. The Falcons got their only score in the second quarter after a sustained drive from deep in their own territory.

Basketball

The 1944-1945 Falcon basketball team began the season as an unknown quantity, as only one veteran of last year's team returned, but the newcomers proved they had something as they swept to five straight victories in the opening games. These victories included home-and-home wins over Augsburg and Macalester and a victory over Concordia on the River Falls floor.

The first defeat of the season was suffered at the Hamline field house at the hands of the powerful Hamline Pipers by a 66-29 score.

Athletics

1944

1945

The Falcons returned home to beat St. Olaf in the most thrilling game of the season, 35-34. After scoring five points in the final minute to tie the game, the Falcons got the decision in an overtime on Dimick's long shot, which was in the air as the final gun sounded.

The next three games were played on the road, the Falcons easily defeating Superior Teachers before dropping a fast game to St. Thomas, 69-50. The Manion-men then rolled up their highest score of the season in drubbing Concordia, 75-44. The Falcons rolled to two more victories at home over the Prescott Flyers and Bethel Junior College before dropping a thriller to St. Thomas, 46-45, for the first defeat on the home floor in two seasons.

River Falls then travelled to La Crosse and couldn't get rolling as they were upset by the Indians in a rugged game, 30-29. St. Mary's handed the Falcons another defeat at Winona the following night, 48-32. Manion's men returned home to avenge the La Crosse defeat with a 58-35 victory, and then whipped Superior, 48-35, in the feature of the 1945 combined Homecoming and Winter Carnival. River Falls

ended this home stand against St. Mary's and came within six points of tying the score in a late rally after being behind by fifteen points at the half, but St. Mary's managed to stall and the final minutes of the game found them victors.

In the last road game, St. Olaf avenged her earlier defeat on the Falls floor, as the Oles got hot in the second half and pulled away, 64-44.

The final game was played before the largest home crowd of the season against Hamline University. The Pipers, who had piled up a good record against the top teams in the nation, were hard pressed to win and gained a safe lead only in the final minutes, when their stalling game broke up the Falcons' defense. Dimick did a remarkable job in holding the giant Howie Schultz to twelve points, one of the lowest totals for him in the season.

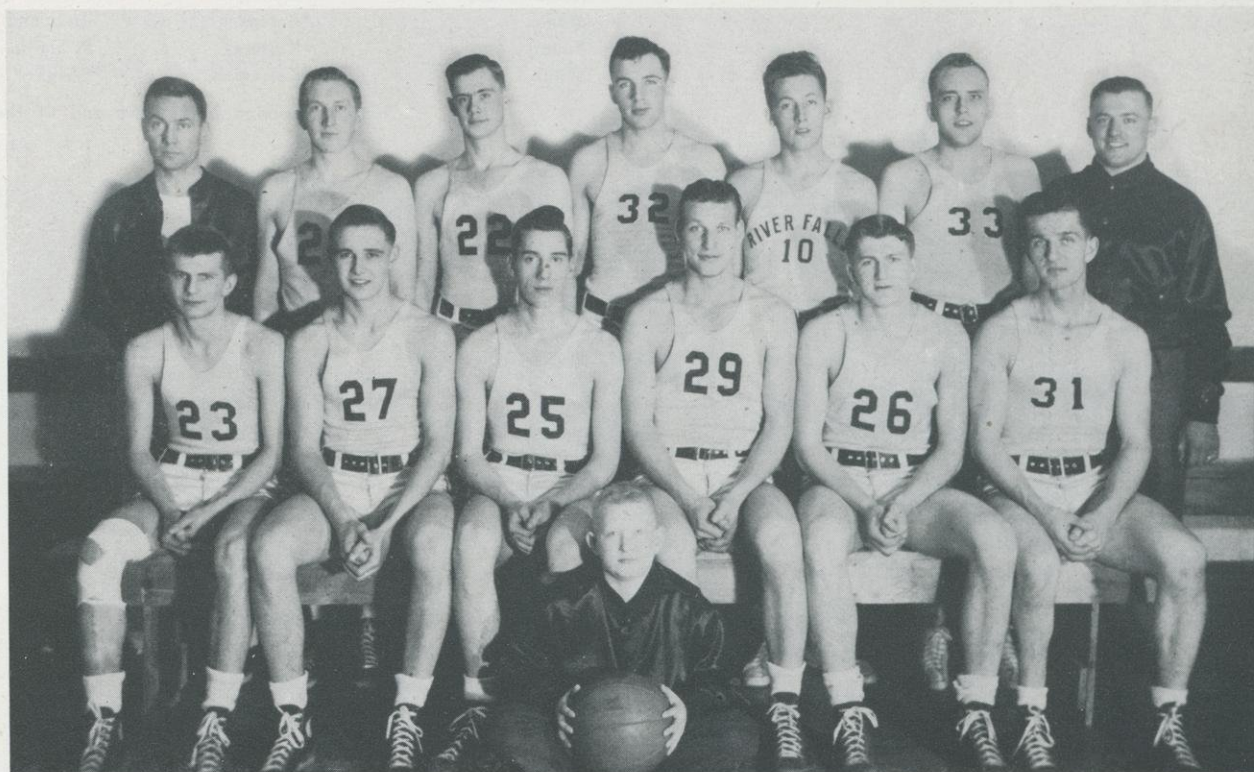
Sam Young led River Falls in scoring with 290 points in the twenty games, followed by Hitt and Dimick who had 192 and 182 points, respectively.

Baseball

The spring athletic program featured the revival of baseball at River Falls after the sport had been allowed to lapse for a period of one year due to the low enrollment of men in the spring term of 1944. The 1945 squad was rather limited as to number and previous experience, although several candidates had had considerable high school experience. The only returning letterman was Joe Ott, who worked on the pitcher's mound and in the outfield for the Falcons in 1943. Squad members were: Joe Ott, Sam Young, Don Miles, Wally Hitt, Hap Dimick, Jim Redmond, Terry Hayes, Paul Rogness, Gene Wirz, Al Hartung, Ed Ausderau, and Vern Hagen.

Eight games were scheduled as follows:

April 21	Balsam Lake City Team (here)
April 28	St. Olaf (here—two games)
May 2	Hamline (there)
May 12	Concordia (here)
May 16	Hamline (here)
May 18	Stillwater Prison (there)
May 21	Concordia (there)



BASKETBALL SQUAD—Back Row: Coach Manion, Kassera, Passow, Redmond, Neidermire, Barbee Brey. Front Row: Miles, Young, Stone, Dimick, Hitt, Wirz, Wells.

Awards Voted by the Athletic Council in Football for the 1944 Season

LETTERS			NUMERALS	
Dimick	Ausderau	Wirz	Fruch	Moody
Wick	Hanvelt	Stone	Passow	Nelson
Hanna	R. Smith	Johnson	Hugdahl	Rudoll
Wright	Scolman	Lindstrom	Fenner	Kassera
Ramberg	Redmond	E. Smith	Hendrickson	Neidermire
Barbee	Hitt	Young	Hayes	Rose

RESULTS OF THE SEASON

River Falls.....	0	St. Olaf	20
River Falls.....	33	Red Wing Training School.....	12
River Falls.....	7	Margaret Boosters	25
River Falls.....	6	St. Olaf	66
	<hr/>		<hr/>
	46		123

Awards Voted by the Athletic Council in Basketball for the 1944-1945 Season

LETTERS	OTHER SQUAD MEMBERS	
Dimick	Barbee	Neidermire
Hitt	*Behm	
Miles	*Hanvelt	*Passow
Stone	*Kannel	Redmond
Young	Kassera	R. Smith
Wirz	Kessenich	*Wright

*Entered service before the end of the playing season.

RESULTS OF THE SEASON

River Falls.....	53	Augsburg	39
River Falls.....	41	Macalester	32
River Falls.....	57	Augsburg	46
River Falls.....	50	Concordia	41
River Falls.....	41	Macalester	35
River Falls.....	29	Hamline	66
River Falls.....	35	St. Olaf	34
River Falls.....	43	Superior	25
River Falls.....	50	St. Thomas	69
River Falls.....	75	Concordia	44
River Falls.....	54	Prescott Flyers	39
River Falls.....	47	Bethel	33
River Falls.....	45	St. Thomas	46
River Falls.....	29	La Crosse	30
River Falls.....	32	St. Mary's	48
River Falls.....	58	La Crosse	35
River Falls.....	48	Superior	35
River Falls.....	51	St. Mary's	62
River Falls.....	44	St. Olaf	64
River Falls.....	32	Hamline	50
	<hr/>		<hr/>
	915		873

BASKETBALL SCORING

	Games	Points	Points Averaged Per Game
Young	20	290	14.5
Hitt	20	192	9.6
Dimick	20	182	9.1
Stone	20	103	5.1
Miles	17	90	5.3
Wirz	14	15	1.1
Barbee	9	11	1.2
Hanvelt	12	10	0.8
Kessenich	9	8	0.9
Kannel	5	7	1.4
Redmond	11	6	0.5
Wright	1	1	1.0
		<hr/>	<hr/>
		915	45.7

The 1945 Meletean

Editor-in-Chief	- - - - -	Eleanor Hayes
Associate Editors	- - - - -	Louise Melbye, Shirley Wiff
Business Manager	- - - - -	Reuben Johnson
Athletics	- - - - -	Edward Ausderau
Women's Athletics	- - - - -	Hope Metcalfe
Literary Editor	- - - - -	Barbara Harris
Photography	- - - - -	Jean Larson
Faculty Adviser	- - - - -	Maud A. Latta

Metcalfe, Harris, Wiff, Melbye, Hayes.



The Student Voice

Co-Editors	- - - - -	Betty Aasterud, Barbara Harris, Frances Berger
Sports Editor	- - - - -	Donald Sandve
Feature Writers	- - - - -	Betty Myers, Phyllis Myhre, Edith Whitaker, Joyce Kennedy
News Reporters	- - - - -	Kay Sneesby, Mary Paulson, Louise Melbye, Lois Landberg, Marge Lynch, Millicent Skone, Shirley Wiff, Maxine Pence, Marjorie Larson, Phyllis Anderson, Louellyn Reiss, Ona Sabby
Typists and Proofreaders	- - - - -	Elaine Stucky, Mary Wilkins, Shirley Lalan, Janet Clark
Business Manager	- - - - -	Marguerite Baird
Faculty Adviser	- - - - -	Walker D. Wyman

Baird, Berger, Harris, Sandve.





College Masquers

On January 25, 1945, the Masquers presented Edward Percy's and Reginald Denham's mystery play, *LADIES IN RETIREMENT*, under the direction of Mr. Carleton Ames.

Special acting honors went to Joyce Kennedy for her portrayal of Ellen Creed and to Millicent Skone and Maxine Huppert, Louisa and Emily Creed.

The cast of the play included:

Lucy Gilham	- - -	Pat Patterson
Lenora Fiske	- - -	Lois Bernd
Ellen Creed	- - -	Joyce Kennedy
Albert Feather	- - -	William Crommett
Louisa Creed	- - -	Millicent Skone
Emily Creed	- - -	Maxine Huppert
Sister Theresa	- - -	Ethel Jones

After the play the Masquers were hosts to the audience at a get-together in the social room in South Hall. The event gives the audience a chance to become acquainted with the cast. The idea was initiated last year after *CRY HAVOC* was presented, and the Masquers hope to make it a tradition.

On April 18 the Masquers presented "The Sugarfoot Minstrels" in the college auditorium. The performance was also given at the Hudson High School in the afternoon. The show featured comedy skits and individual acts.



OFFICERS

LOIS BERND	- - -	President
MARILYN MERCORD	- - -	Vice-President
VERA LOUISE FINSTAD	- - -	Secretary
MARY FRANCES HAWKINS	- - -	Treasurer
CARLETON C. AMES	-	Adviser and Coach

MEMBERS

Lois Bernd	Shirley Lalan
William Crommett	Marjorie Lynch
Ione Engen	Lorraine McCue
Jean Erlandson	Marilyn Mercord
Vera Finstad	Lois Meulemans
Mary Hawkins	Phyllis Myhre
Marion Hope	Betty Patterson
Maxine Huppert	Louellyn Reiss
Joyce Kennedy	Millicent Skone

ALPHA PSI OMEGA

Carleton C. Ames	Elsie Hoffman
Lois Bernd	Maxine Huppert
Jean Erlandson	Marjorie Lynch
Vera Finstad	Nona McCollow
Mary Hawkins	Lois Meulemans
	Millicent Skone



Melbye, Reiss, Daniel, Hoffmann (Coach).

RED RIVER VALLEY SPEECH TOURNAMENT, CONCORDIA
COLLEGE, MOORHEAD, MINNESOTA, FEBRUARY 8, 9, 1945

Lois Hunter - - - - First place in Women's Oratory
Gerald Splinter - Second place in Men's Extemporaneous Speaking
John Bradley and Louis Daniel—Tied for second place in Men's
Debate
Louise Melbye and Louellyn Reiss - Won two debates out of five

EAU CLAIRE DEBATE TOURNAMENT, EAU CLAIRE STATE
TEACHERS COLLEGE, EAU CLAIRE, WISCONSIN,
MARCH 3, 1945

John Bradley and Louis Daniel—Won the cup for winning all debate
with the highest number of points for debating and speaking
Louise Melbye - - - - Won two debates out of four
Question—Resolved: That the federal government should enact
legislation requiring compulsory arbitration of all labor disputes,
constitutionality conceded.

PI KAPPA DELTA

Louise Melbye -	-	-	-	-	-	Degree of Fraternity
Louellyn Reiss -	-	-	-	-	-	Degree of Fraternity
Lois Hunter -	-	-	-	-	-	Degree of Proficiency
Gerald Splinter	-	-	-	-	-	Degree of Honor
Louis Daniel -	-	-	-	-	-	Degree of Honor
John Bradley -	-	-	-	-	-	Degree of Honor

Speech

1944-1945



Lois Hunter



CONCERT BAND

Back Row:

Lola Estenson, Wiff, Pfitzner (Director), Torgerson, Lila Estenson.

Middle Row:

M. Larson, Bjornson, Frey, J. Larson, Sabby, Howe, Adam.

Front Row:

Wagner, Anderson.

Music

ORCHESTRA

Back Row:

Lila Estenson, Peterson.

Front Row:

Lola Estenson, J. Larson, Sabby, Howe, Anderson, Wagner, Catone, Pfitzner (Director).





OCTET

Left to Right:

Wiff, Wharton (Director), Mercord,
Skone, Harris, Bernd, Davis, Shepard,
Stronks, Somsen.

A CAPPELLA CHORUS

Back Row:

Hope, Bernd, Klett, Lynch.

Middle Row:

Lola Estenson, Stucky, Meulemans,
Somsen, Griffith, Wiff, Lila Estenson.

Front Row:

Skone, Hunter, Stewart, Stronks, Ken-
nedy, Myhre.





Women's Athletic Association

VOLLEYBALL—Back Row: Hendrickson, Metcalfe, Halverson, Bredahl, Skane, Torgerson. Front Row: Blok, Mellum, Rice, Patterson, Engen.

Mrs. Gilbert this year showed her true ability as a coach when she molded a group of girls into one of the best volleyball teams the physical education department has had in years. Viola Halverson, captain of team A, and Arlyn Bredahl, captain of team B, were the foundation for this volleyball season. The first game was held November 1, and was a game of fast scoring, with neither side holding a comfortable margin until the final minutes of the game, when team B outplayed to win by a score of 21-14. Team A staged a rally in the second game, which was held November 6. The final whistle found team A ahead four points, with the final score 21-17. November 8 found team A still in its scoring mood. At this game, they defeated team B by a score of 21-19. The majority of the losing team's points were won in the closing seconds of the game, but their splurge came too late in the game to enable them to win. Team A, with championship honor aspirations, started the next two games with determination to win. This they fell short of by three points in the final two games, the B team emerging victorious in the November 13 and November 15 games in an identical score of 21-18. Mrs. Gilbert picked the twelve members who did outstanding teamwork in the conference games, and the W.A.A. gave each honor member of the team fifty points to be used toward the red "R".



BASKETBALL—Back Row: Hendrickson, Gund, Harrison, Bredahl, Griffith. Front Row: P. Nelson, Metcalfe, Coach Lichtenstein, Carter, Engen.

OFFICERS

GLADYS LEADHOLM - - - President
 PATRICIA NELSON - - - Vice-President
 HOPE METCALFE - - - Secretary-Treasurer
 VIOLA HALVORSON - - - Point Secretary

Coach Gilbert

Basketball

Under the able direction of Coach Lichtenstein and basketball chairman Arlyn Bredahl, the W.A.A. sponsored an interesting basketball season. The girls were well trained in the technique of basketball, and were highly maneuverable on the floor during the various games. Three games were played with the River Falls G.A.A. team. In the first game which was played by team A of both organizations, the college team outplayed the G.A.A. to win by the score, 24-21. The next game was played by team B of both organizations. The college team, although evenly matched by the G.A.A., gained a margin in free throws, finally winning the game by the score, 24-20. The final game was played by the college team A and team B and the G.A.A. team A. During this contest the G.A.A. won the game by the score, 20-13.

BASKETBALL TEAM B



Geraets, Haugen, Blok,
 Nelson, Rice



Archery



Hitt, Young, Mercord, Myhre, Kennedy.



Young, Mercord

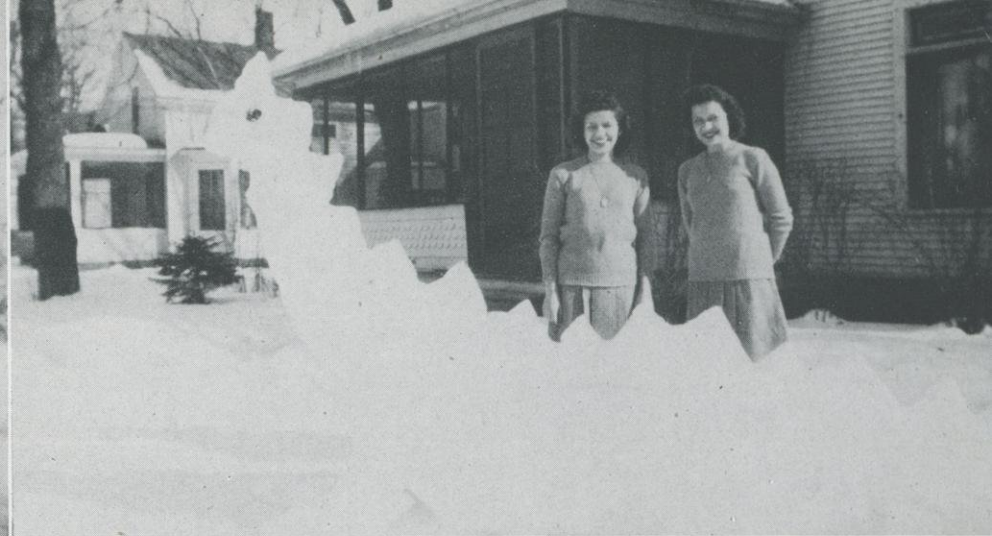
Homecoming

The outstanding event of the college year, 1944-1945, was the combination Homecoming and Winter Carnival, held February 9 and 10, under the sponsorship of the student senate, with Reuben Johnson as a most capable chairman.

The events in which all students participated with enthusiasm began on Friday afternoon when a big pep meeting was held in the auditorium. The cheer leaders led the college yells which drew a lot of spirit from the audience. President Ames, Dr. Karges, and Coach Manion each spoke briefly. Paul Rogness, the M.C., announced the stunts. Each organization in school either put on a stunt or helped in some way with the pep meeting. The stunts were novel and included everything from operating on Superior to fortune telling. Three prizes were offered at the pep meeting. The prizes were awarded to a student group headed

by Ann Laufenberg, Y.M.C.A. and Y.W.C.A. Of course, the most important part of the pep meeting was the coronation scene when the king and queen of the Homecoming were crowned. As the orchestra played "Marche Pontificale" the king, Sam Young, and the queen, Marilyn Mercord, came down the aisles and up to the platform with their attendants, Phyllis Myhre and Joyce Kennedy, the two crown bearers, and Eugene Wirz who headed the committee which chose the king and queen candidates. Sam and Marilyn were then crowned by last year's king, Reuben Johnson, who had reigned at the mock Homecoming. Their majesties were then presented to the audience.

Although many students had planned to enter the ice skating events to be held after the pep meeting, they were disappointed because the weather was against them. The ice was too soft for skating.



Many of the houses where students room entered the snow-sculpturing contest. The theme of the Homecoming, SLEIGH SUPERIOR, was carried out in the sculpturing. The judges awarded first prize to the House of Retrum whose prehistoric animal was quite monstrous. The House of Kurtz's Ferdinand took second prize, and the House of Jensen's basketball player who, incidently, was greatly weakened by the mild weather, "copped" third prize.

Saturday afternoon provided the real thrills when many of the students trudged up the Mound for some grand fun tobogganing. The boys had made the toboggan tracks, and they were steep and smooth—just right for lots of fun. The wind was sharp, and almost everyone wore

snowy eyelashes and eyebrows as well as frosty hair.

The outstanding event of the Homecoming was the game with Superior which was played on Saturday. At 8:30 that evening our team played Superior in a game which we won, 48-35. Sam Young and Hap Dimick were high point men for the Falcons. The gym was filled to capacity and the crowd was backing the team every minute of the game. There was extra-special music between the halves provided by a pep band.

After the game a big Homecoming Dance was held in South Hall gym. Music for the dance was furnished by Harold Hunter's orchestra. The gym was festively decorated.



Organizations

LANGUAGE CLUB
Meulemans, Skone, Mercord.

A C E
Stronks, Hoseid, Larson, Stronks.

SIGMA CHI SIGMA
Wiff, Harris, Hayes.

HONOR SOCIETY
Ausderau, Harris, Landberg.

RURAL LIFE CLUB
Torgerson, Reiton, Marfo, Vennes.

MASQUERS
Mercord, Hawkins, Bernd, Finstad.

MIDGARDIANS
Wohlk, McCollow, O'Brien

PALETTE CLUB
Metcalf, Hunter, Wohlk.

MATHEMATICS CLUB
*Estenson, Sabby, *Landberg,
Gund, Pence, *Rees, Greenfield.
*Program Committee



STUDENT SENATE—(Standing): Fenner, Wirz, Rogness, Ausderau, Young. (Seated): Harris, Skone, Sneesby, Stronks, McCollow.



Y W C A—(Standing): Harris, Metcalfe, Churchill, Hoseid. (Seated): Skone, Larson, Berger, Wiff, Landberg, Sneesby.



Y M C A—(Standing): Kassera, Hartung, Ausderau. (Seated): Johnson, Hayes, Sandve, Hagen, Hendrickson, Rogness, Fenner.



Candid

Larson's Incorporated

Fun on the Mound

Swashbuckler Sneesby

River Falls artists

Elementary Science

Patterson performs

Jensen and McCollow—
Puff-and-Pant

Y.W.-Y.M. breakfast at
Prof. Jake's

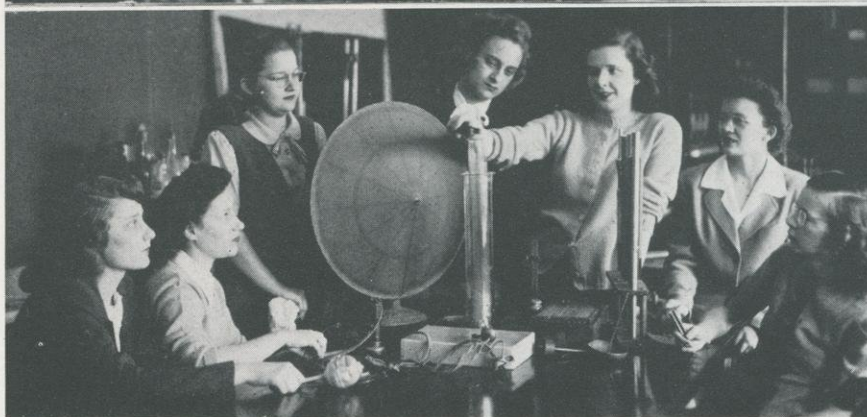
Stronks and her pin-up man

Huppert demonstrates

House of "Hagholtson"

Frye Uppercrust

Seaman Leadholm salutes





BUREAU OF ENGRAVING, INC.
Minneapolis, Minnesota

