



# LIBRARIES

UNIVERSITY OF WISCONSIN-MADISON

## **Atlas. Narrative of the United States Exploring Expedition during the years 1838, 1839, 1840, 1841, 1842 : with illustrations and maps.**

Wilkes, Charles, 1798-1877

Philadelphia: Lea and Blanchard, 1845

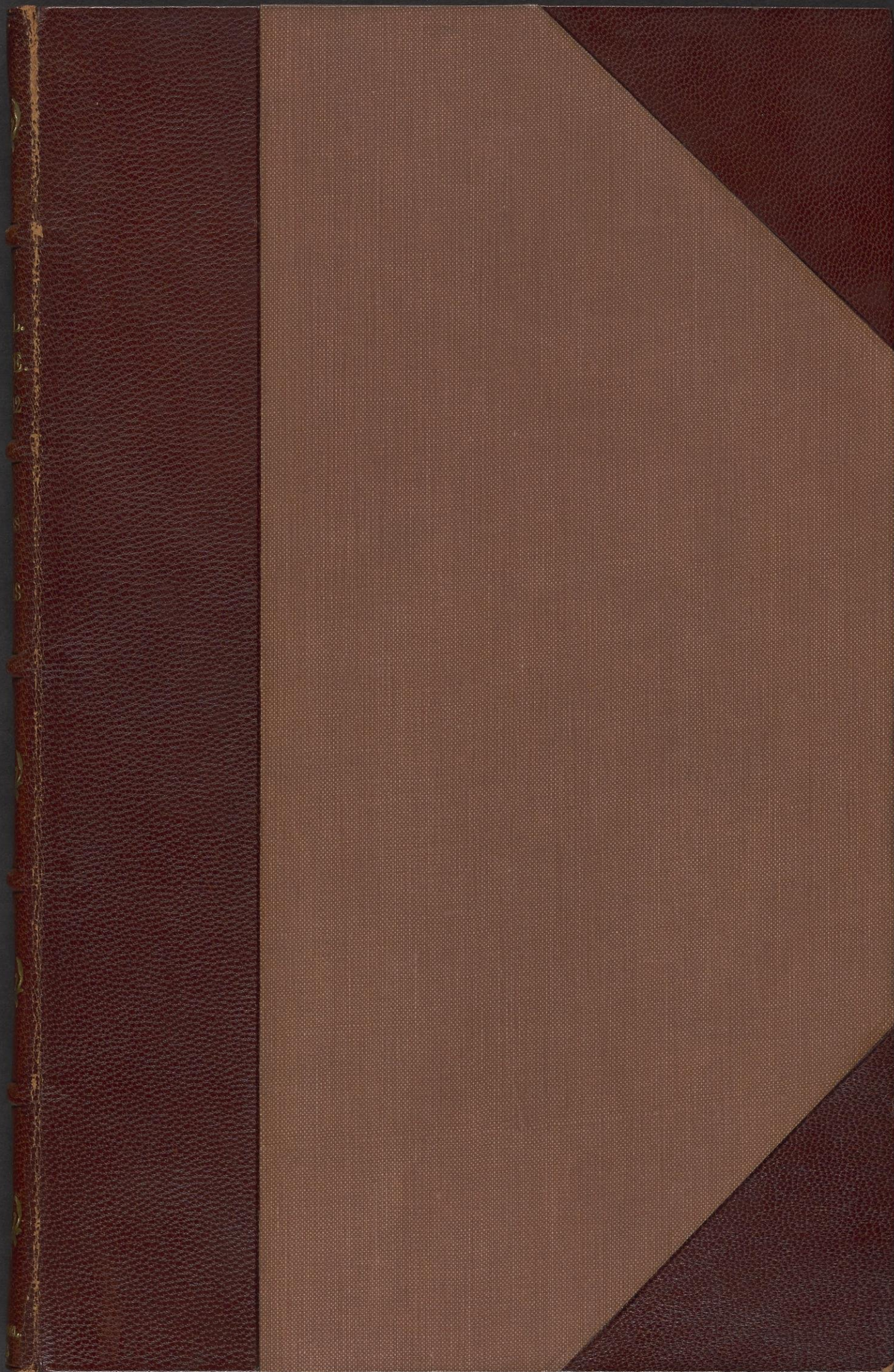
<https://digital.library.wisc.edu/1711.dl/BGMUTB3EILFIZ9E>

<http://rightsstatements.org/vocab/NoC-US/1.0/>

The libraries provide public access to a wide range of material, including online exhibits, digitized collections, archival finding aids, our catalog, online articles, and a growing range of materials in many media.

When possible, we provide rights information in catalog records, finding aids, and other metadata that accompanies collections or items. However, it is always the user's obligation to evaluate copyright and rights issues in light of their own use.







The Library  
of the



University of Wisconsin

From the collection  
of the late  
Chester H. Thordarson

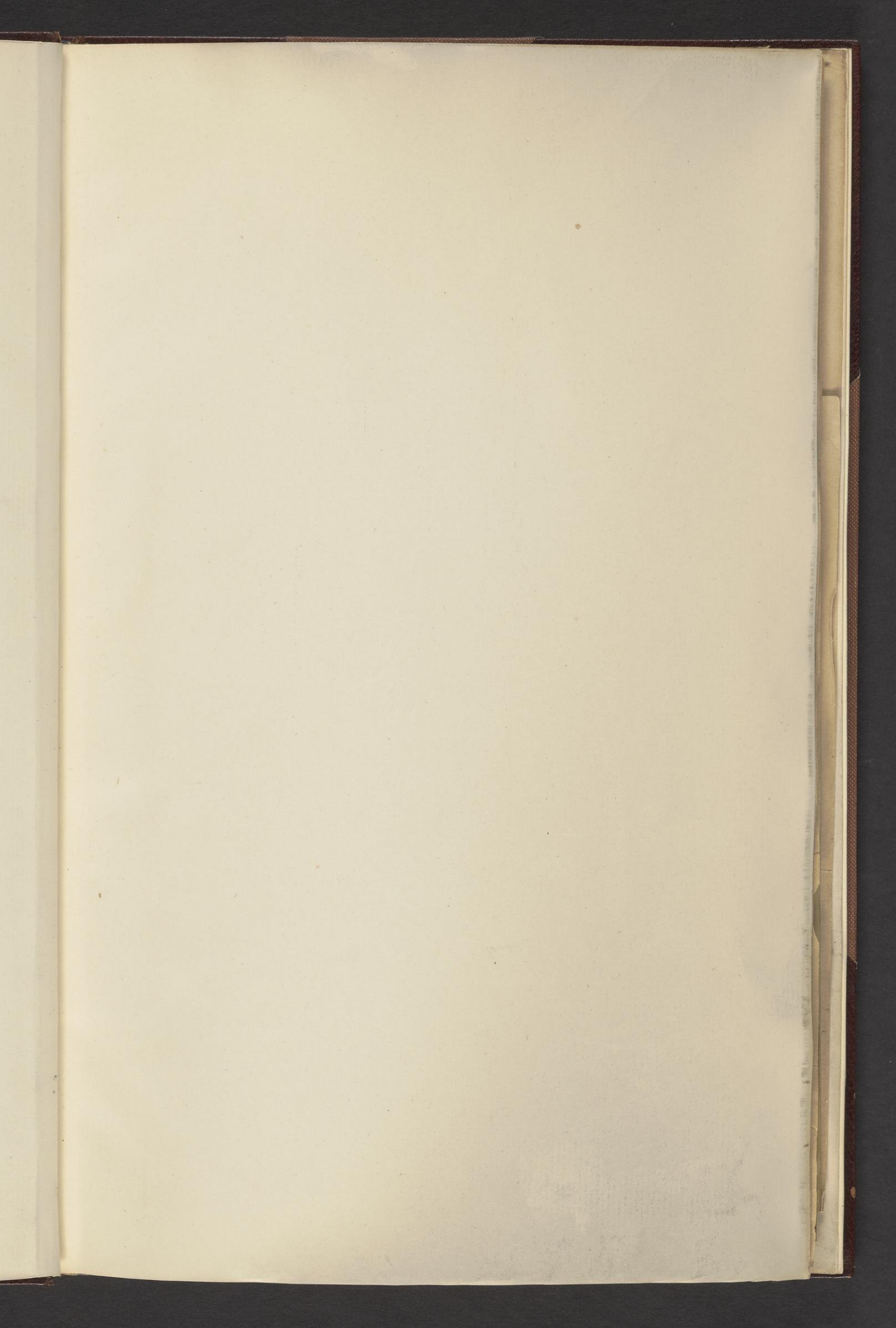






T2586

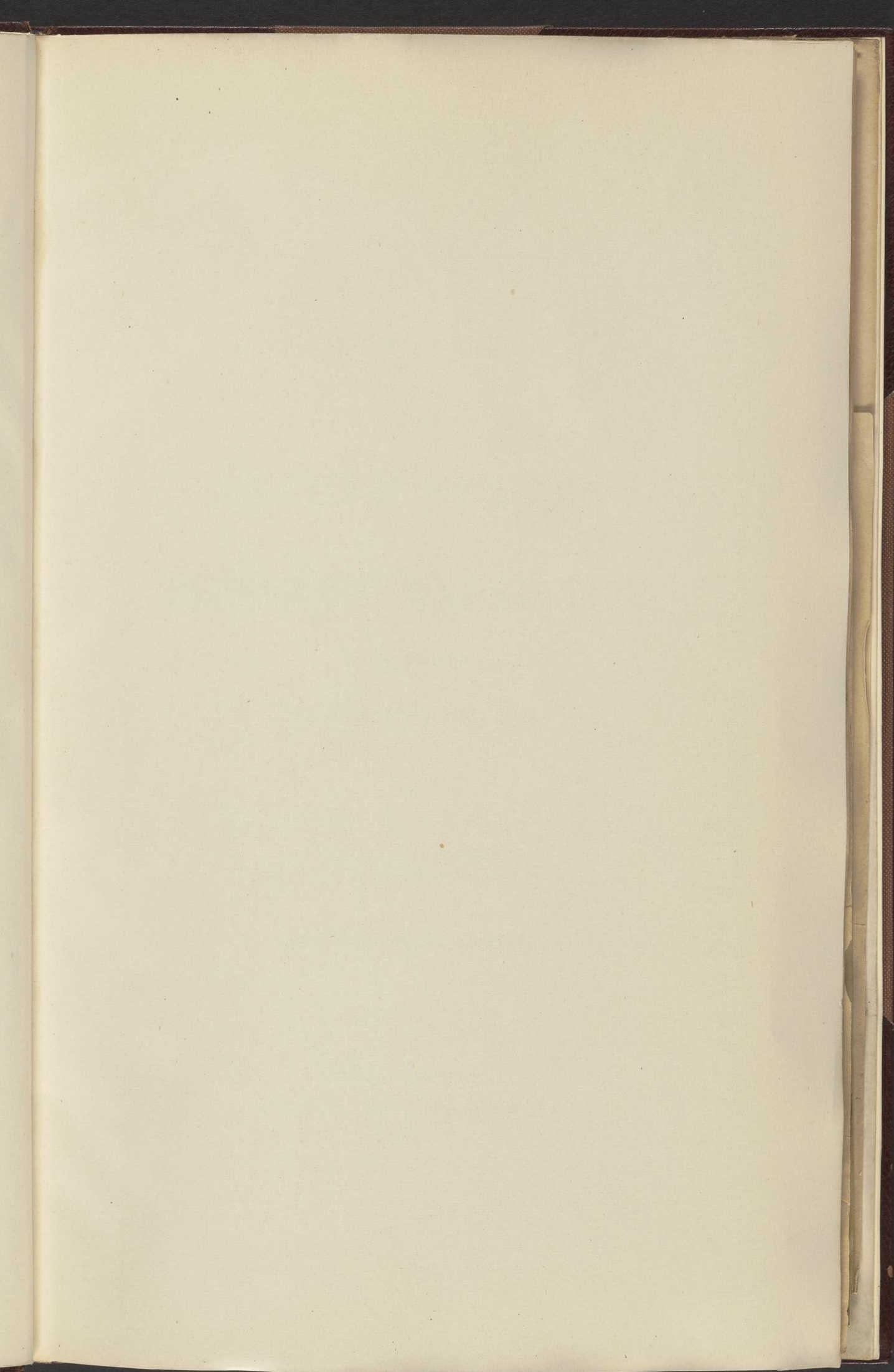




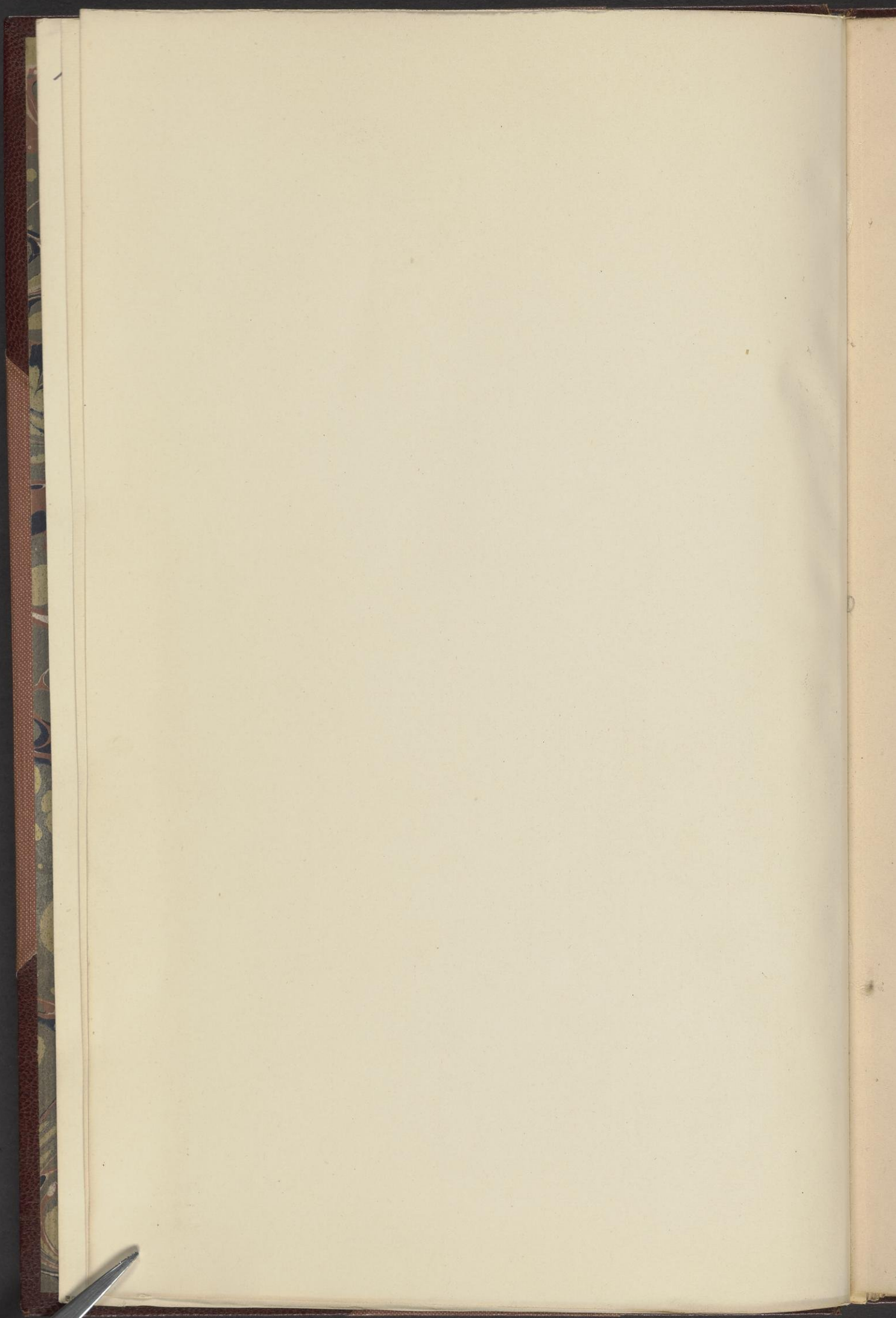














A T L A S.

---

NARRATIVE

OF THE

UNITED STATES

*Thomas S. Grover*  
EXPLORING EXPEDITION.

DURING THE YEARS

1838, 1839, 1840, 1841, 1842.

BY

CHARLES WILKES, U. S. N.,

COMMANDER OF THE EXPEDITION,

MEMBER OF THE AMERICAN PHILOSOPHICAL SOCIETY, ETC.

IN FIVE VOLUMES, AND AN ATLAS.

---

PHILADELPHIA:

LEA & BLANCHARD.

1845.



ENTERED, ACCORDING TO THE ACT OF CONGRESS, IN THE YEAR 1844,  
BY CHARLES WILKES, U. S. N.,  
IN THE CLERK'S OFFICE OF THE DISTRICT COURT FOR THE DISTRICT OF COLUMBIA.

---

STEREOTYPED BY J. FAGAN.

PRINTED BY C. SHERMAN.

---



Rare Books  
Thorndarson  
T 2586

873011

## C O N T E N T S.

*Sheep to Goose*

### TRACK MAP.

(COLOURED.)

This Map shows the tracks of the vessels of the Exploring Squadron, combined, and acting separately; the direction of the winds; the currents, their direction and velocity; the isothermal lines for every five degrees of temperature, from the point of perpetual congelation to the Torrid Zone. (See explanation on Map.)

### MAP OF THE ANTARCTIC CONTINENT.

It exhibits the daily tracks of the vessels along the land discovered by the Expedition, —the winds, currents, temperature, lines of variation, and icy barrier by which it is bounded.

### MAP OF THE FEEJEE GROUP.

This Map embraces the Viti or Feejee Group, consisting of one hundred and fifty-four islands, with numerous coral reefs, &c.

### MAP OF THE OREGON TERRITORY.

This embraces the United States possessions west of the Rocky Mountains, between the parallels of 42° and 54° 40' N., and also shows Fremont's Pass through the Rocky Mountains.

### MAP OF THE SOUTHEAST PORTION OF HAWAII.

This Map exhibits the two remarkable volcanic mountains visited by the Expedition, with their numerous craters, together with the great eruption of 1840, and the track of the party to and from the crater of Moku-a-weo-weo, on the top of Mauna Loa.



CHART  
OF THE WORLD  
SHOWING THE TRACKS  
OF THE  
U.S. EXPLORING EXPEDITION

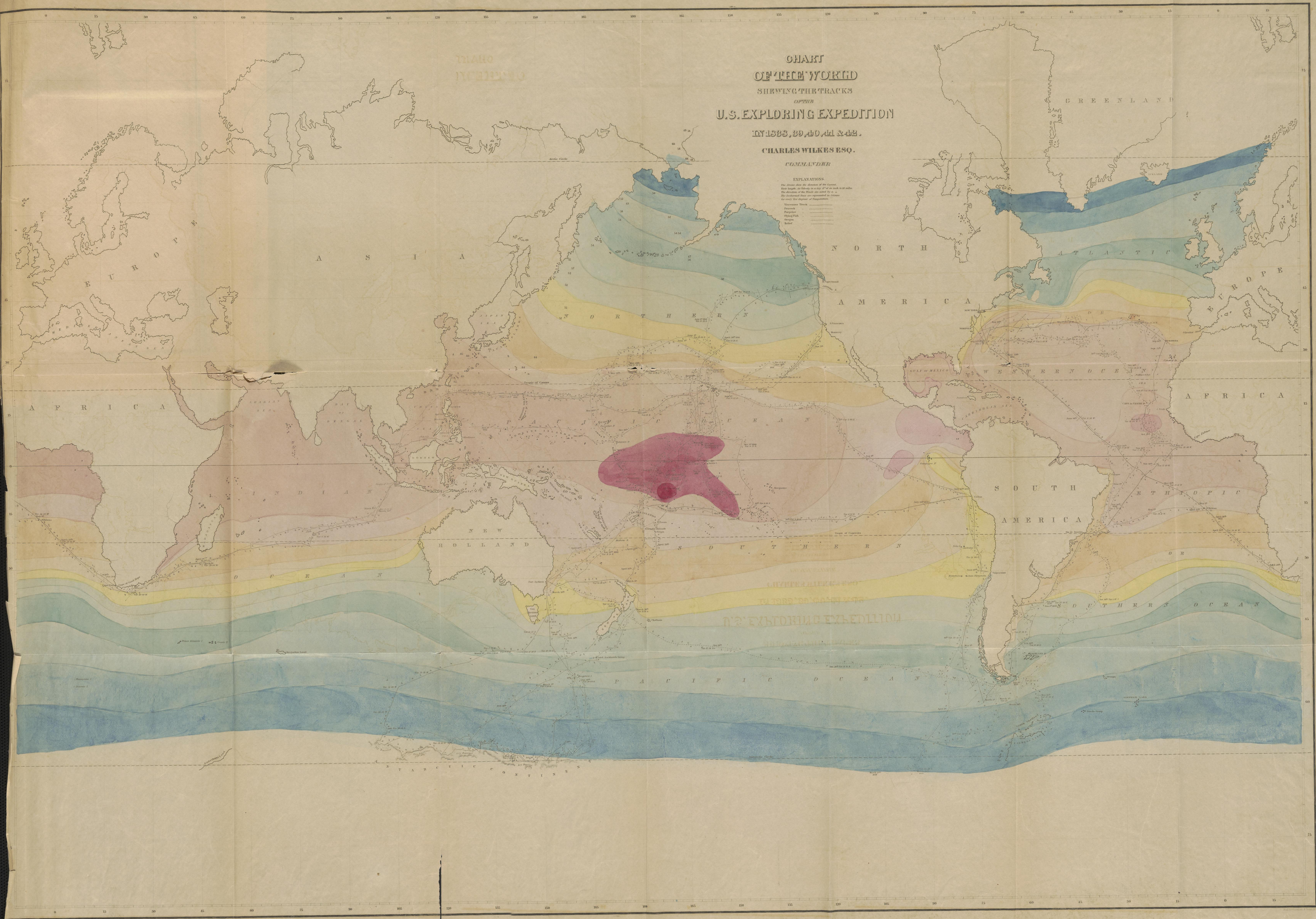
IN 1838, 39, 40, 41 & 42.

CHARLES WILKES ESQ.

COMMANDER

EXPLANATIONS.  
The Shaded Area shows the direction of the Current.  
The Length of the Lines in the Shaded Area is the direction of the Wind.  
The Direction of the Wind is noted by a  
The Direction of the Current is noted by a  
The Direction of the Current is noted by a  
The Direction of the Current is noted by a

Shaded Area	Current
Line	Wind
Arrow	Direction of Wind
Circle	Direction of Current





100° 110° 120° 130° 140° 150° 160° 170°

Antarctic Continent as seen by the U.S. Ship Peacock, January 29<sup>th</sup> A.M. 1840.

Antarctic Continent as seen by the U.S. Ship Peacock, January 29<sup>th</sup> P.M. 1840. Lat. 66° 37' S. Long. 153° 40' E. Peak bearing S.W.

Antarctic Continent as seen by the U.S. Ship Vincennes, January 30<sup>th</sup> 1840. Lat. 66° 33' S. Long. 140° 16' E. in Pines Bay

Antarctic Continent as seen by the U.S. Ship Vincennes, February 1<sup>st</sup> 1840. Lat. 66° 12' S. Long. 137° 22' E.

Antarctic Continent as seen by the U.S. Ship Vincennes, February 11<sup>th</sup> 1840. Lat. 65° 59' 40" S. Long. 106° 10' E.

# CHART OF THE ANTARCTIC CONTINENT

Shewing the ICE BARRIER Attached to it.

DISCOVERED BY THE  
U.S. EX. EX.  
CHARLES WILKES, ESQ.  
COMMANDER  
1840.

Note: This is a rough sketch of the Antarctic Continent, and the details have been derived from the charts and journals of the expedition.

By J. Thomson & Co. N.Y.

Wilkes  
Peacock  
Porpoise  
Flying Fish



100° 110° 120° 130° 140° 150° 160° 170°





CHART  
OF THE  
FJIAN ISLANDS  
OR  
THE U.S. EX. EX.  
BY THE U.S. EX. EX.  
CHARLES WILKES ESQ.  
COMMANDER  
U.S. NAVY  
1840.





MAP  
OF THE  
OREGON TERRITORY

BY THE  
U. S. EX. EX.  
CHARLES WILKES Esqr.  
COMMANDER.  
1841.

Scale of 100 English Miles  
Scale of 100 French Miles

NOTE  
The Northern part of this Map contains the latest information  
of the Hudson Bay Company, and the Eastern part that of  
Lieut. Demont's U.S.E. Expedition on the Eastern side of the  
Rocky Mountains.

COLUMBIA RIVER  
REDUCED FROM A SURVEY  
MADE BY THE  
U. S. EX. EX.  
1841.

This Country is extremely Rocky  
and rough, the Rivers running  
through deep Gorges.





MAP  
 of  
 Part of the Island of  
**HAWAII**  
 SANDWICH ISLANDS  
 SHEWING THE CRATERS AND ERUPTION  
 OF  
 MAY AND JUNE 1840.  
 BY THE  
**U.S. EX. EX.**  
 1341

OLD LAVA PLAIN

OLD LAVA PLAIN

MAUNA LOA

MAUNA KEA

MAUNA LOA

Maui Crater

Old Crater

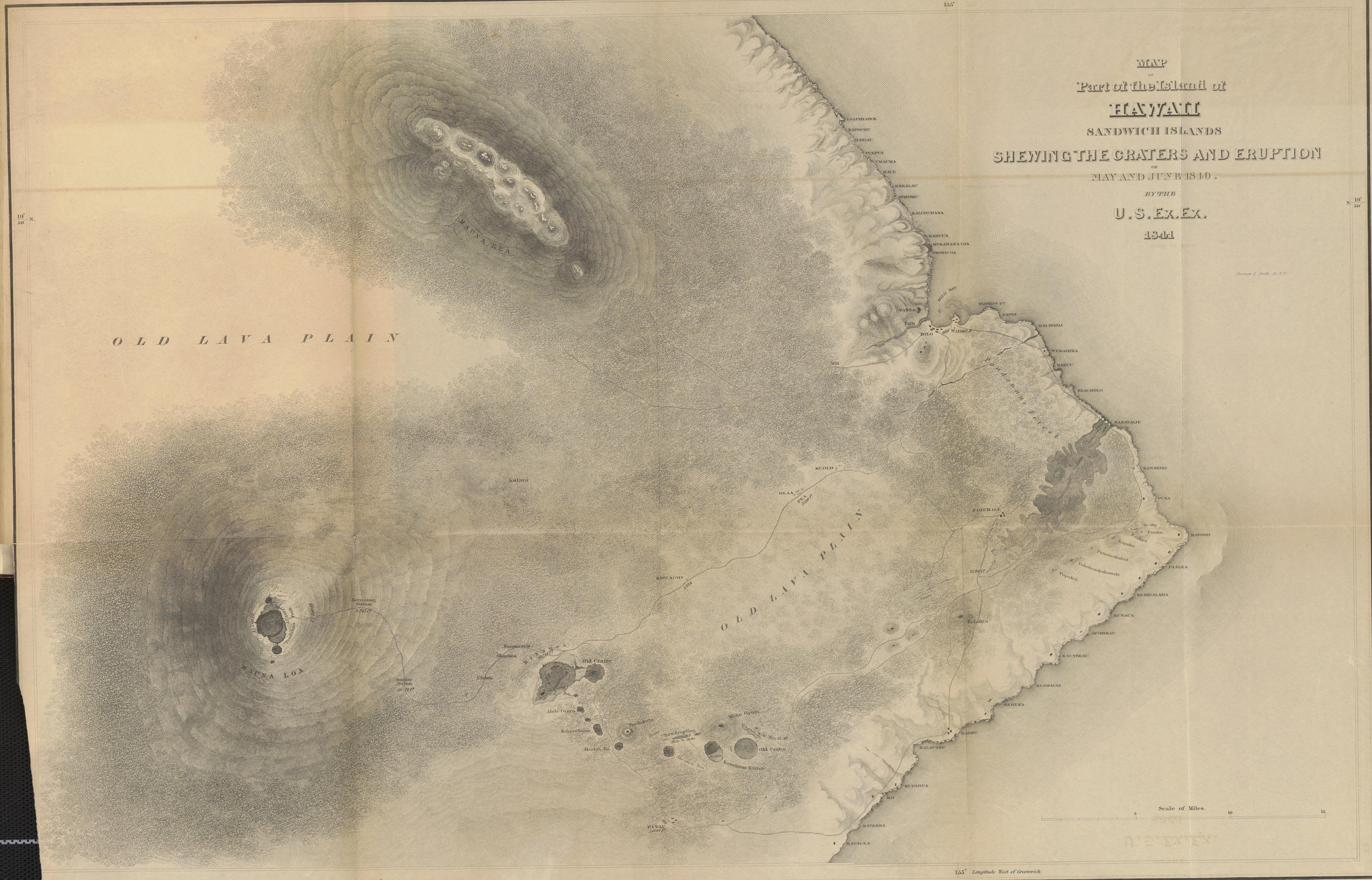
10' 50" N.

10' 50" N.

155° Longitude West of Greenwich

Scale of Miles. 5 10 15

SHEWING THE CRATERS AND ERUPTION  
 OF  
**HAWAII**







m

14



