



# LIBRARIES

UNIVERSITY OF WISCONSIN-MADISON

## General catalog no. 5501. 1900/1999?

American Chair Co.

Sheboygan, Wisconsin: American Chair Co., 1900/1999?

<https://digital.library.wisc.edu/1711.dl/O5ZFGGY62K2RE8A>

This material may be protected by copyright law (Title 17, US Code).

Original material owned by Mead Public Library.

For information on re-use see:

<http://digital.library.wisc.edu/1711.dl/Copyright>

The libraries provide public access to a wide range of material, including online exhibits, digitized collections, archival finding aids, our catalog, online articles, and a growing range of materials in many media.

When possible, we provide rights information in catalog records, finding aids, and other metadata that accompanies collections or items. However, it is always the user's obligation to evaluate copyright and rights issues in light of their own use.



---

AMERICAN  
CHAIR COMPANY  
MANUFACTURERS

---

SHEBOYGAN  
WISCONSIN

GENERAL CATALOG NO. 5501

---

S  
R  
674  
Am3g2



SHEB 2FLR/REFERENCE

S R

674 Am3g2

American Chair Company

General catalog no. 5501.



9000558426



*Mead Public Library*

S  
R

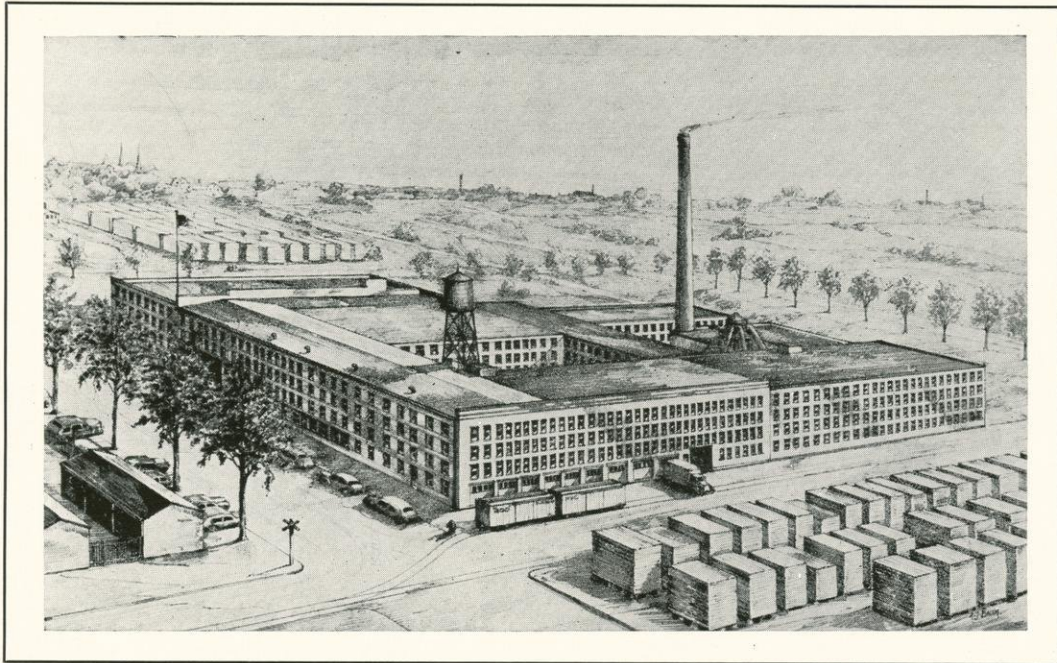
674

Am392

c.1

558426

## GENERAL CATALOG No. 5501



### *Permanent Displays*

MERCHANDISE MART—CHICAGO

16th Floor

DECORATIVE ARTS CENTER—NEW YORK

305 EAST 63RD STREET

9th Floor

**AMERICAN**  
**CHAIR COMPANY**  
M A N U F A C T U R E R S  

---

**SHEBOYGAN, WISCONSIN**



*PaceMaker*  
REG. U.S. PAT. OFF.  
modern furniture

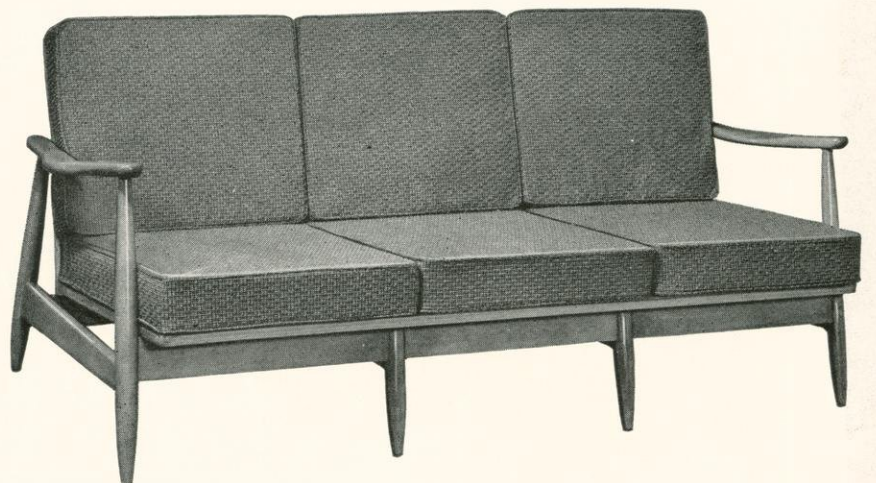


No. 420 Group



No. 420

Width 29 in. Height 32 in.  
Seat 22 x 23 in. Back 19 in.



No. 425

Length 73 in. Height 32 in.  
Seat 23 x 66 in. Back 19 in.

Available in Spring, or Foam-Rubber Filled Reversible Seat and Back Cushions

Designed by **Felix Augenfeld**



*PaceMaker*  
REG. U.S. PAT. OFF.  
modern furniture



**No. 431**

Width 24 in. Height 31 in.  
Seat 21 x 18½ in. Back 14½ in.



**No. 442**

Cocktail Table  
Top 18 x 54 in. Height 15 in.



**No. 424**

Width 22 in. Height 32 in.  
Seat 22 x 23 in. Back 19 in.



**No. 440**

End Table  
Top 18 x 30 in. Height 21 in.



**No. 444**

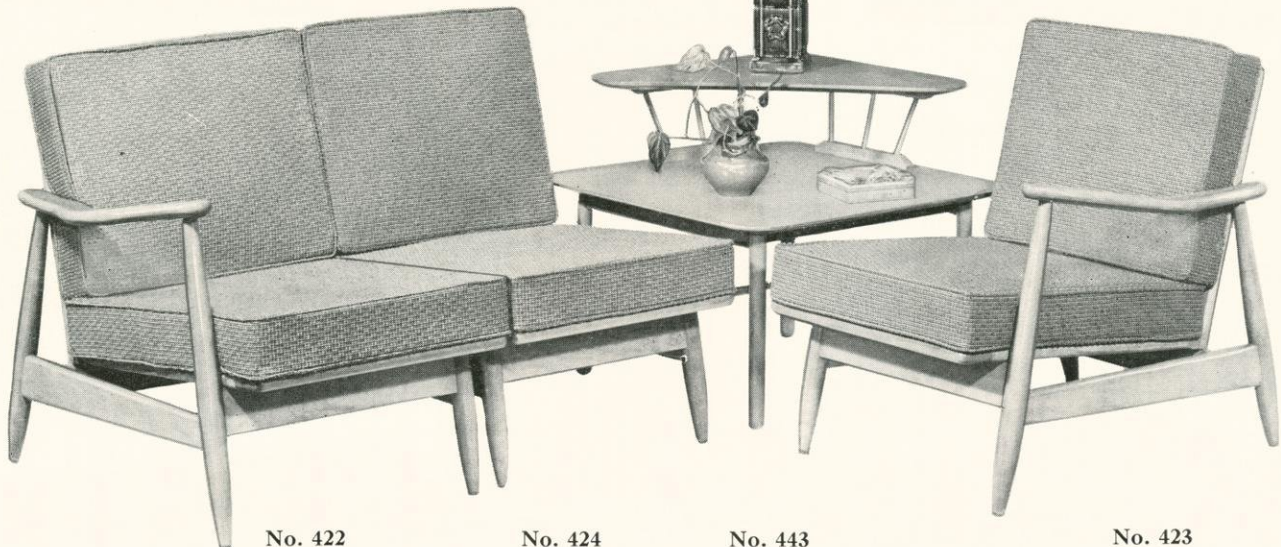
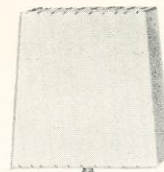
Lamp Table  
Top 21 x 21 in. Height 24 in.



**No. 443**

Corner Table  
30 x 30 in. Height 25 in.

Occasional Tables available with  
Maple Plywood, or Formica  
Tops. Black, Natural Maple,  
or Almond Pieewood Formica.



**No. 422**

Width 25½ in. Height 32 in.  
Seat 22 x 23 in. Back 19 in.

**No. 424**

Width 22 in. Height 32 in.  
Seat 22 x 23 in. Back 19 in.

**No. 443**

Corner Table  
30 x 30 in.  
Height 25 in.

**No. 423**

Width 25½ in. Height 32 in.  
Seat 22 x 23 in. Back 19 in.

Available in Spring, or Foam-Rubber Filled Reversible Seat and Back Cushions



*PaceMaker*  
REG. U.S. PAT. OFF.  
 modern furniture



No. 448 Open and Extended



No. 435

Width 22 in. Height 33 in.  
 Seat 18 x 17 in. Back 16 in.



No. 434

Seat 17 x 17 in. Back 16 in.

"No Sag" Spring Seats



No. 448

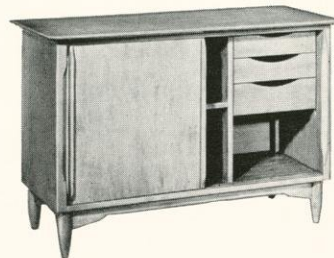
Drop Leaf Extension Table  
 Top Closed 26 x 42 in. Top Open 42 x 64 in.  
 Extends to 84 in.  
 Maple Plywood Top Only



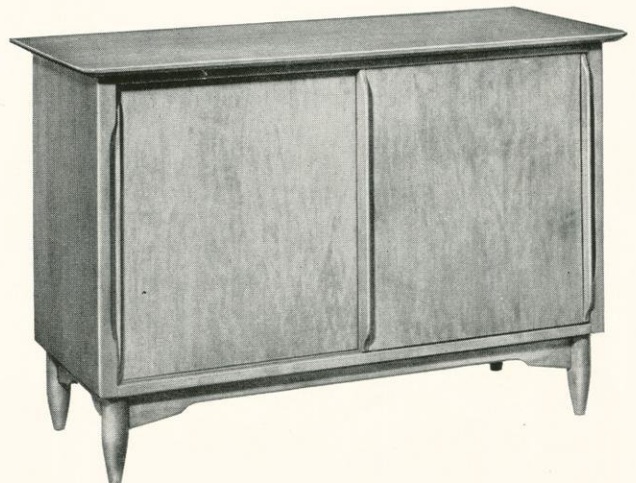
No. 451

Hutch

20 x 48 in. Height 63 in.  
 Maple Plywood or Formica Top



No. 450 Inside View



No. 450

Buffet

20 x 48 in. Height 32 in.  
 Maple Plywood or Formica Top

Hutch Base and Buffet available  
 with Black, Natural Maple or  
 Almond Pieewood Formica Top.

Designed by **Felix Augenfled**



*PaceMaker*  
REG. U.S. PAT. OFF.  
 modern furniture



No. 446

Card Dinette Extension Table  
 Top Closed 34 x 34 in. Height 29 in.  
 Extends to 48 in.  
 Maple Plywood or Formica Top



No. 433

Seat 18 x 16 in. Back 16 in.  
 Slip Seat, Cane Back



No. 445

Card Table  
 Top 34 x 34 in. Height 29 in.  
 Maple Plywood or Formica Top

Tables and Desk available with Black, Natural Maple or Almond Picwood Formica Top



No. 436

Captain's Chair  
 Width 24 in. Height 30 1/2 in.  
 Seat 21 x 16 in. Back 14 in.



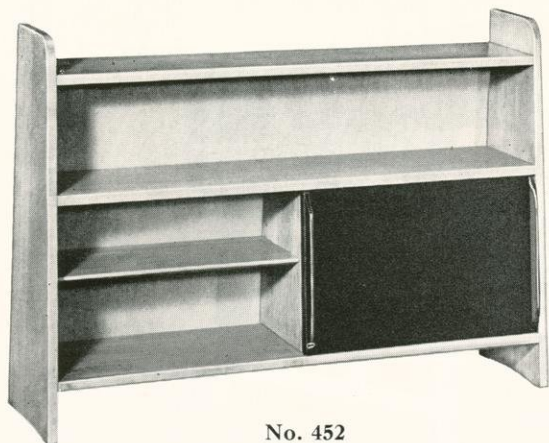
No. 457

Extension Table  
 Top Closed 32 x 46 in. 60 in. Extension  
 Maple Plywood or Formica Top



No. 437

Captain's Side Chair  
 Seat 18 x 16 in. Back 15 in.



No. 452

Book Case  
 11 x 44 in. Height 31 in.



No. 449

Desk with Drawer  
 Top 24 x 42 in. Height 29 in.  
 Maple Plywood or Formica Top

Designed by Felix Augenfeld



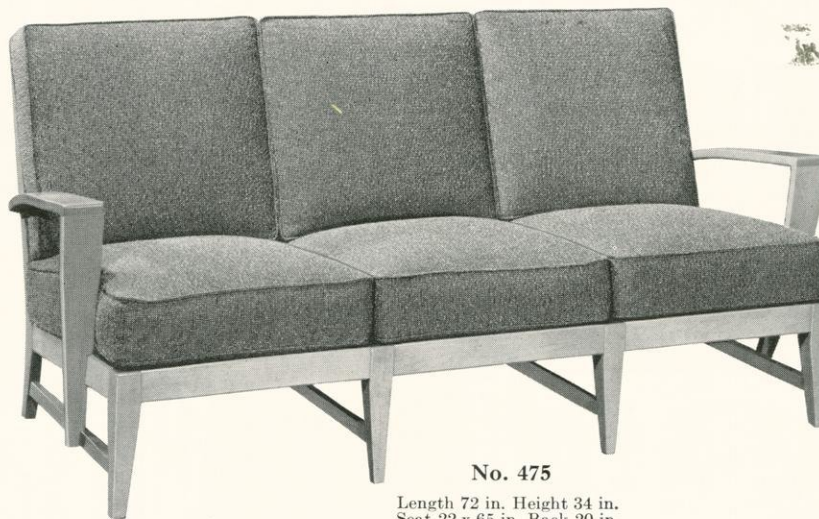
*PaceMaker*  
REG. U.S. PAT. OFF.  
 modern furniture



**No. 470**  
 Width 28½ in. Height 34 in.  
 Seat 22 x 22 in. Back 20 in.



**No. 474**  
 Width 22 in. Height 34 in.  
 Seat 22 x 22 in. Back 20 in.



**No. 475**  
 Length 72 in. Height 34 in.  
 Seat 22 x 65 in. Back 20 in.



**No. 472**  
 Width 26 in. Height 34 in.  
 Seat 22 x 22 in. Back 20 in.

**No. 474**  
 Width 22 in. Height 34 in.  
 Seat 22 x 22 in. Back 20 in.

**No. 161**  
 Corner Table  
 Top 27 x 27 in.  
 Height 22½ in.

**No. 473**  
 Width 26 in. Height 34 in.  
 Seat 22 x 22 in. Back 20 in.

Reversible Seat and Back Cushions





**No. 164**  
End Table  
Top 18 x 27 in. Height 22½ in.



**No. 160**  
Cocktail Table  
Top 34 in. Diameter. Height 16 in.



**No. 296**  
Step Table  
18 x 27 in. Height 26 in.



**No. 165**  
Lamp Table  
Top 24 in. Diameter. Height 22½ in.

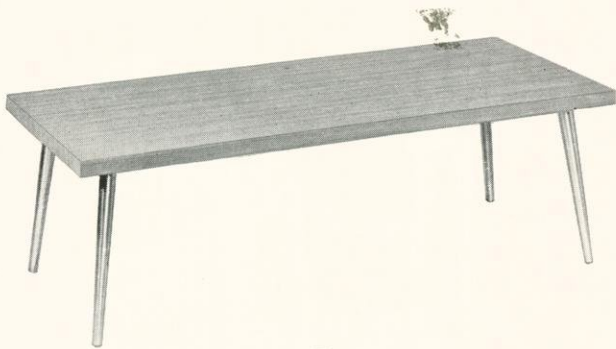


**No. 162**  
Cocktail Table  
Top 18 x 36 in. Height 16 in.



**No. 161**  
Corner Table  
Top 27 x 27 in. Height 22½ in.

Occasional Tables available with  
Maple Plywood, or Formica Tops. Black, Natural Maple or Almond Picwood Formica



**No. 507**  
Cocktail Table  
Top 22 x 48 in. Height 17½ in.



**No. 508** Cocktail Table  
36 in. Diameter. Height 17½ in.  
Quarter Cut Formica Top

**No. 509** Cocktail Table  
42 in. Diameter. Height 17½ in.  
Quarter Cut Formica Top



**No. 506**  
End Table  
Top 18 x 30 in. Height 23½ in.

Numbers 506, 507, 508 and 509 Tables available in all Stock Patterns of Formica Only and are furnished with Formica Top and Edge and Round Tapered Brass Legs

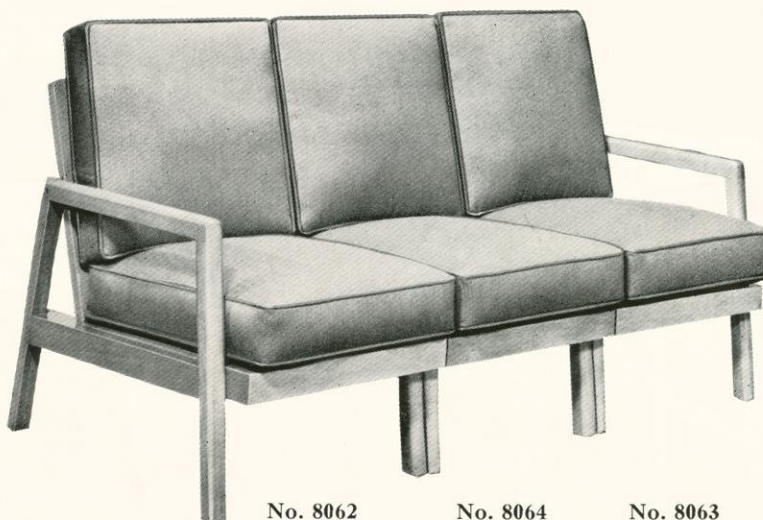


*PaceMaker*  
REG. U.S. PAT. OFF.  
**modern furniture**



**No. 8027**

Width 24½ in. Height 35 in.  
 Seat 21½ x 21 in. Back 20 in.  
 Wall Saving Construction



**No. 8062**

Width 22½ in.  
 Height 35 in.  
 Seat 21 x 21 in.  
 Back 20 in.

**No. 8064**

Width 21 in.  
 Height 35 in.  
 Seat 21 x 21 in.  
 Back 20 in.

**No. 8063**

Width 22½ in.  
 Height 35 in.  
 Seat 21 x 21 in.  
 Back 20 in.

Wall Saving Construction



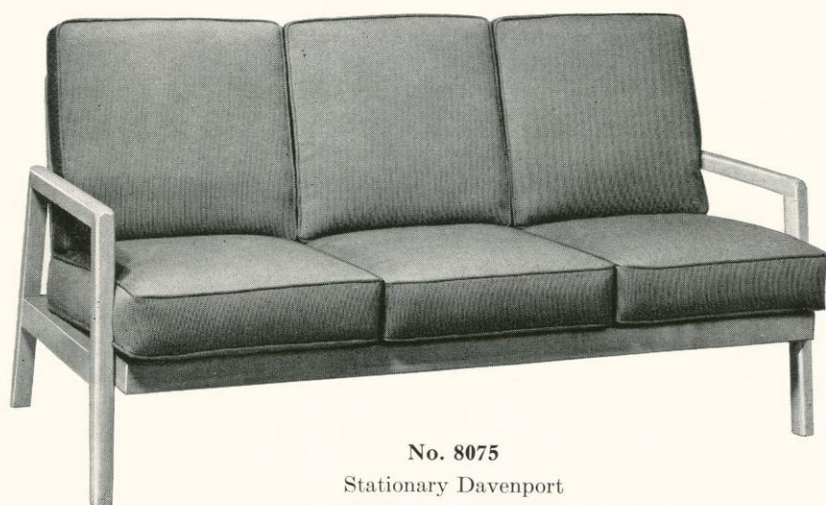
**No. 8096**

Stationary Love Seat  
 Length 45½ in. Height 35 in.  
 Seat 21 x 42 in. Back 20 in.  
 Wall Saving Construction



**No. 8069**

Ottoman  
 21½ x 17½ in. Height 16½ in.



**No. 8075**

Stationary Davenport  
 Length 66 in. Height 35 in.  
 Seat 21 x 63 in. Back 20 in.  
 Wall Saving Construction



**No. 8137**

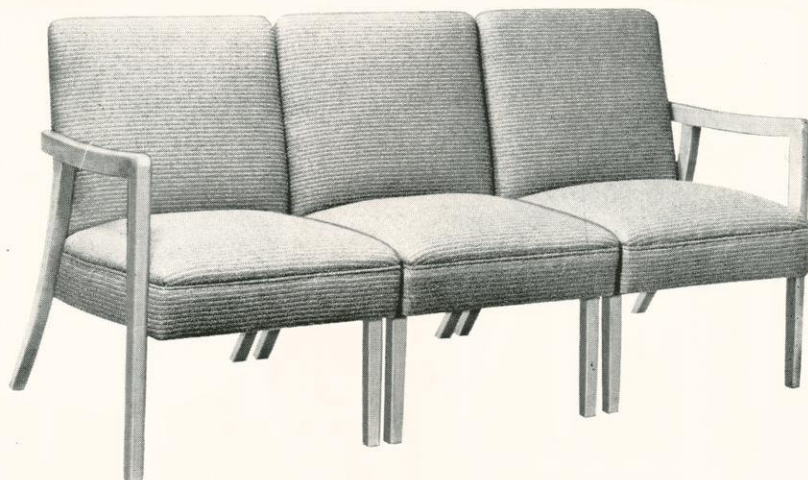
Overchair Table  
 Top 17 x 28 in. Height 27 in.  
 Maple Plywood, Natural Maple or Almond  
 Picwood Formica Top

Designed by **Colin Campbell McLean**





**No. 400**  
Width 24 in. Height 32 in.  
Seat 21 x 20 in. Back 18 in.  
Wall Saving Construction



**No. 402**      **No. 404**      **No. 403**  
Width 22½ in. Height 32 in.      Width 21 in. Height 32 in.      Width 22½ in. Height 32 in.  
Seat 21 x 20 in. Back 18 in.      Seat 21 x 20 in. Back 18 in.      Seat 21 x 20 in. Back 18 in.  
Wall Saving Construction



**No. 349**  
Cocktail Table  
Top 24 x 42 in. Height 16 in.  
Black or Stock Pieewood  
Formica Top and Edge



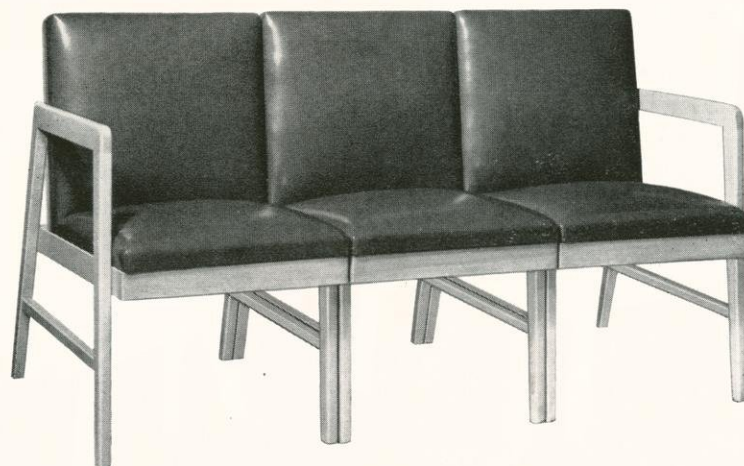
**No. 489**  
End Table  
Top 20 x 28 in. Height 21 in.  
Black or Stock Pieewood  
Formica Top and Edge



**No. 350**  
Cocktail Table  
Top 42 in. Diameter. Height 16 in.  
Black or Stock Pieewood  
Formica Top and Edge



**No. 8080**  
Width 21 in. Height 32 in.  
Seat 19 x 18 in. Back 16½ in.  
Wall Saving Construction



**No. 8082**      **No. 8084**      **No. 8083**  
Width 20 in. Height 32 in.      Width 19 in. Height 32 in.      Width 20 in. Height 32 in.  
Seat 19 x 18 in. Back 16½ in.      Seat 19 x 18 in. Back 16½ in.      Seat 19 x 18 in. Back 16½ in.  
Wall Saving Construction



*PaceMaker*  
REG. U.S. PAT. OFF.  
 modern furniture



**No. 454**  
 Width 25 in. Height 34 in.  
 Seat 22 x 20 in. Back 17 in.  
 Wall Saving Construction



**No. 419**  
 Width 29 in. Height 34 in.  
 Seat 21 x 21 in. Back 19 in.



**No. 1259**  
 Width 24 in. Height 33 in.  
 Seat 22 x 19 in. Back 18 in.



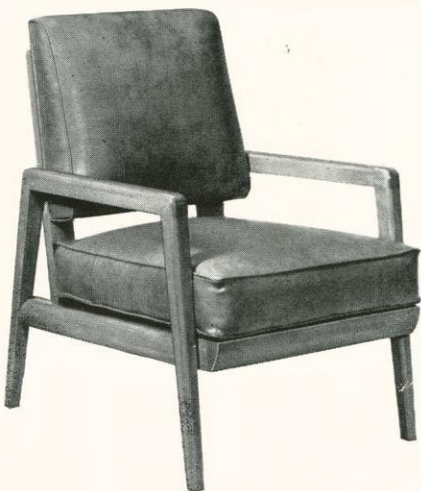
**No. 8100**  
 Width 22 in. Height 32½ in.  
 Seat 19 x 19 in. Back 17 in.



**No. 1266**  
 Width 23 in. Height 31 in.  
 Seat 20 x 19 in. Back 14 in.



**No. 8122**  
 Width 25 in. Height 32 in.  
 Seat 22 x 19 in. Back 17 in.



**No. 8117**  
 Width 24½ in. Height 34½ in.  
 Wall Saving Construction



**No. 8136**  
 Width 25 in. Height 32 in.  
 Seat 25 x 20½ in. Back 16 in.



**No. 8119**  
 Width 25½ in. Height 34½ in.  
 Wall Saving Construction



*PaceMaker*  
REG. U.S. PAT. OFF.  
 modern furniture



**No. 140**

Seat 20½ x 19 in. Back 13 in.  
 Height 30 in.



**No. 396**

Width 23 in. Height 31 in.  
 Seat 20 x 19 in. Back 14 in.



**No. 453**

Seat 20½ x 19 in. Back 13 in.  
 Height 30 in.



**No. 463**

Width 22 in. Height 31 in.  
 Seat 20½ x 19 in. Back 14½ in.



**No. 573**

Width 22 in. Height 31 in.  
 Seat 22 x 19 in. Back 14 in.  
 Furnished with Brass Ferrules  
 and Brass Rubber Cushion Glides



**No. 466**

Width 22½ in. Height 32 in.  
 Seat 20½ x 19 in. Back 13½ in.  
 Available in Elastic Plastics only



**No. 469**

Width 19 in. Height 32 in.  
 Seat 19 x 17 in. Back 15½ in.



**No. 488**

Width 22½ in. Height 32 in.  
 Seat 20½ x 19 in. Back 13½ in.  
 Available in Elastic Plastics only



**No. 468**

Width 22 in. Height 32 in.  
 Seat 20 x 18 in. Back 15½ in.





**No. 2219**  
Width 27 in. Height 30½ in.  
Seat 21 x 19 in. Back 17 in.



**No. 356**  
Width 22 in. Height 31 in.  
Seat 20 x 19 in. Back 14 in.



**No. 2238**  
Width 27 in. Height 30½ in.  
Seat 21 x 19 in. Back 17 in.



**No. 2180**  
Width 29 in. Height 29 in.  
Seat 25 x 20 in. Back 14 in.

**No. 2238F**  
Same as No. 2238, but with Flounce



**No. 2150**  
Width 23 in. Height 33 in.  
Seat 21 x 19 in. Back 17 in.



**No. 1370**  
Width 25 in. Height 33 in.  
Seat 21 x 20 in. Back 18 in.



**No. 298**  
Width 20½ in. Height 34 in.  
Seat 19 x 18 in. Back 17 in.





**No. 2206**  
Width 27 in. Height 30 in.  
Seat 20 x 20 in. Back 18 in.



**No. 2235**  
Seat 24 x 20 in. Back 19 in.  
Height 34 in.



**No. 2205**  
Width 27 in. Height 30 in.  
Seat 20 x 20 in. Back 18 in.



**No. 2200**  
Width 25 in. Height 35 in.  
Seat 22 x 21 in. Back 20 in.



**No. 2215**  
Seat 24 x 20 in. Back 22 in.  
Height 35 in.  
Rubber Seat and Back



**No. 2204**  
Width 25 in. Height 35 in.  
Seat 22 x 21 in. Back 20 in.  
Button and Semi Tufted Back

**No. 2214**  
Same style as above with  
regular construction





**No. 2208**  
Width 27 in. Height 38 in.  
Seat 24 x 19 in. Back 20 in.



**No. 2168**  
Width 24 in. Height 34 in.  
Seat 21 x 20 in. Back 19 in.



**No. 2207**  
Width 27 in. Height 38 in.  
Seat 24 x 20 in. Back 20 in.



**No. 2219**  
Width 27 in. Height 30½ in.  
Seat 21 x 19 in. Back 17 in.

**No. 2219F**  
Same as No. 2219, but with Flounce



**No. 5300**  
Width 23 in. Height 33 in.  
Seat 21 x 20 in. Back 18 in.  
Hand Tufted Back. Fringe Trim



**No. 5314**  
Width 23 in. Height 33 in.  
Seat 21 x 20 in. Back 18 in.



**No. 2237**  
Width 25 in. Height 29½ in.  
Seat 22 x 21 in. Back 16 in.





No. 1370

Width 25 in. Height 33 in.  
Seat 21 x 20 in. Back 18 in.



No. 2150

Width 23 in. Height 33 in.  
Seat 21 x 19 in. Back 17 in.



No. 2277

Width 28 in. Height 28 in.  
Seat 22 x 20 in. Back 16 in.



No. 2278

Width 28 in. Height 28 in.  
Seat 22 x 20 in. Back 16 in.



No. 2301

Width 28 in. Height 28 in.  
Seat 20 x 20½ in. Back 16 in.



No. 2302

Width 28 in. Height 28 in.  
Seat 19 x 20 in. Back 16 in.



*PaceMaker*  
REG. U.S. PAT. OFF.  
 modern furniture



**No. 463 Arm Chair**  
 Width 22 in. Height 31 in.  
 Seat 20½ x 19 in. Back 14½ in.

**No. 391 Card Table**  
 Top 32 x 32 in. Height 29 in.  
 Black or Stock  
 Picwood Formica Top and Edge



**No. 300**  
 Seat 17 x 16 in. Back 15 in.  
 Slip Seat and Upholstered Center Slat



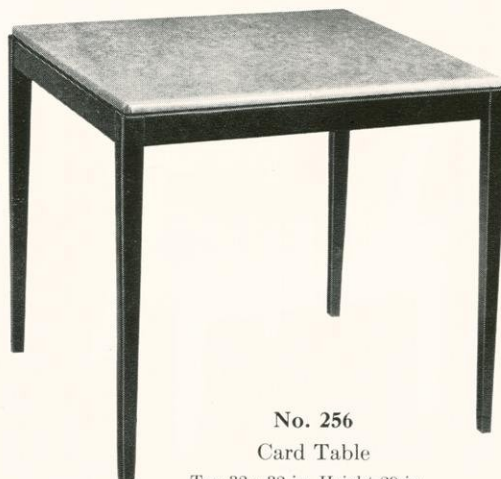
**No. 8126**  
 Seat 18 x 17½ in. Back 16 in.  
 Front and Rear View



**No. 185**  
 Seat 17 x 16 in. Back 15 in.  
 Slip Seat



**No. 299**  
 Seat 18 x 17 in. Back 16½ in.  
 Height 34 in.  
 "No Sag" Spring Seat  
 and Upholstered Back



**No. 256**  
 Card Table  
 Top 32 x 32 in. Height 29 in.  
 Imitation Leather Top



**No. 298**  
 Width 20½ in. Height 34 in.  
 Seat 19 x 18 in. Back 17 in.  
 "No Sag" Spring Seat  
 and Upholstered Back



*PaceMaker*  
REG. U.S. PAT. OFF.  
 modern furniture



**No. 754**

Seat 16½ x 16½ in. Back 15½ in.

Slip Seat



**No. 342**

Width 20½ in. Height 33 in.  
 Seat 18 x 17½ in. Back 16 in.

Slip Seat



**No. 572**

Seat 18 x 16 in. Back 15 in.

Slip Seat



**No. 358**

Seat 17 x 16 in. Back 15½ in.

Slip Seat



**No. 359**

Width 30 in. Height 33 in.  
 Seat 18½ x 17½ in. Back 16 in.



**No. 575**

Seat 18 x 16½ in. Back 14½ in.

"No Sag" Spring Seat



**No. 341**

Seat 17 x 16 in. Back 15½ in.

Slip Seat and Upholstered Back



**No. 340**

Width 20 in. Height 33 in.  
 Seat 18 x 17 in. Back 16 in.

Slip Seat and Upholstered Back



Rear View

**No. 340 and No. 341**



*PaceMaker*  
REG. U.S. PAT. OFF.  
**modern furniture**



**No. 304**  
 Seat 17 x 15½ in. Back 15½ in.  
 Slip Seat



**No. 574**  
 Drop Leaf Table  
 Top Open 42 x 64 in.  
 Top Closed 26 x 42 in.  
 Maple Plywood Top



**No. 255**  
 Seat 17 x 15½ in. Back 15½ in.  
 Slip Seat



**No. 280**  
 Width 20 in. Height 33 in.  
 Seat 18½ x 17½ in. Back 16 in.  
 Slip Seat



**No. 257**  
 Drop Leaf Table  
 Top Open 40 x 54 in.  
 Top Closed 20 x 40 in.  
 Maple Plywood Top



**No. 177**  
 Seat 17 x 16 in. Back 15½ in.  
 Slip Seat



**No. 244**  
 Seat 16 x 15½ in. Back 14½ in.  
 Slip Seat



**No. 281**  
 Seat 16½ x 16 in. Back 15½ in.  
 Slip Seat and Upholstered Back



**No. 8037**  
 Seat 17 x 17 in. Back 15 in.  
 Saddle Wood Seat





No. 2187  
Hutch  
17 x 42 in. Height 66 in.  
Maple Plywood Top

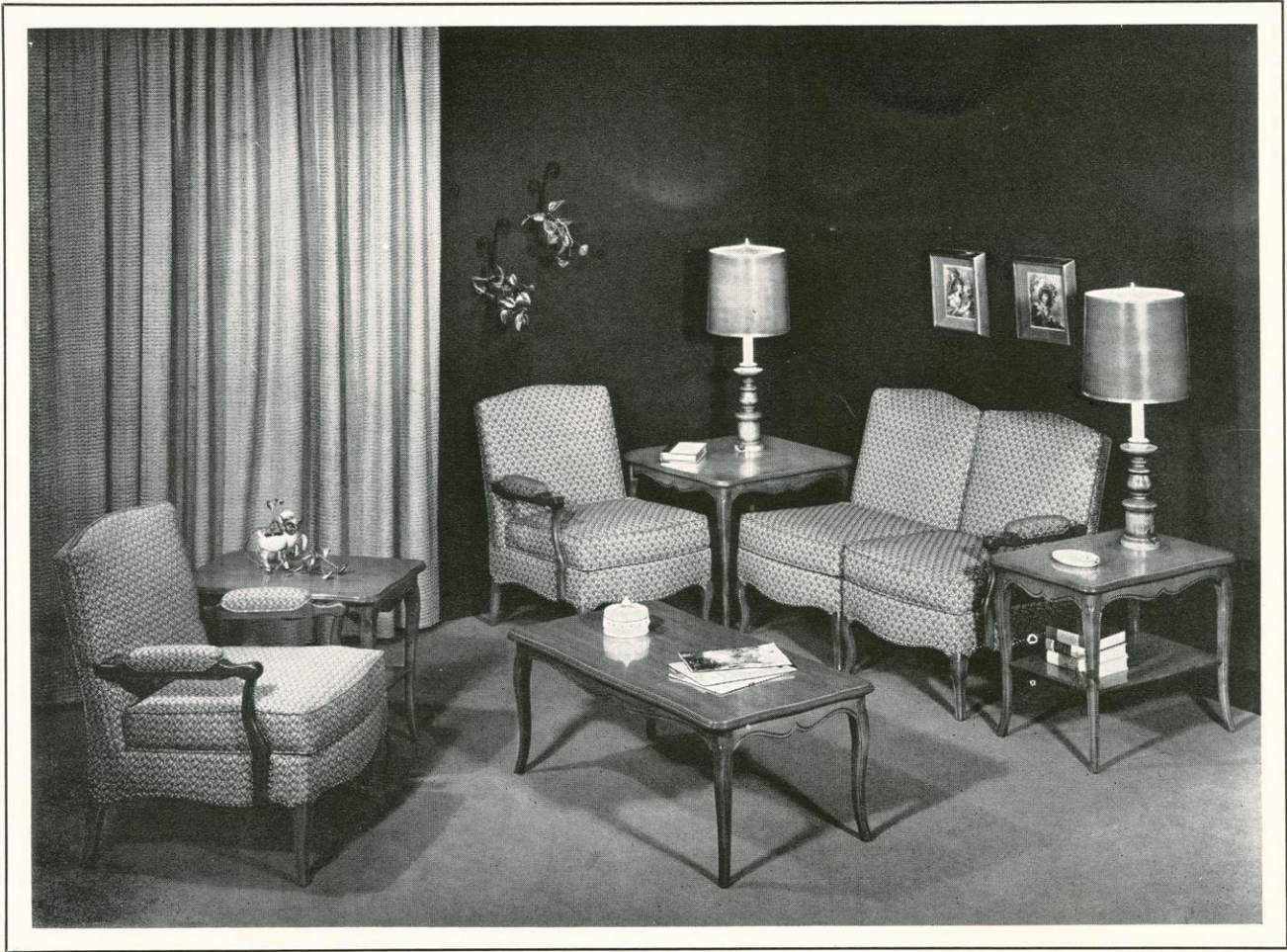


No. 2113  
Buffet  
17 x 42 in. Height 32 in.  
Maple Plywood Top

## *French Provincial*

*Finished in No. 513 Provincial Walnut,  
or No. 522 Fruitwood*





## *French Provincial*

*Finished in No. 513 Provincial Walnut, or No. 522 Fruitwood*



**No. 2244**

Width 22 in. Height 32 in.  
Seat 22 x 21 in. Back 18 in.

**No. 2242**

Width 23 in. Height 32 in.  
Seat 22 x 21 in. Back 18 in.

**No. 2244**

Width 22 in. Height 32 in.  
Seat 22 x 21 in. Back 18 in.

**No. 2167**

Corner Table  
Top 27 x 27 in.  
Height 21 in.

**No. 2243**

Width 23 in. Height 32 in.  
Seat 22 x 21 in. Back 18 in.



*French Provincial*



No. 2161

Width 21 in. Height 33 in.  
Seat 18½ x 18 in. Back 16 in.



No. 2163

Cocktail Table

Top 22 x 42 in. Height 16 in.

Maple Plywood Top or Formica Top  
Matching No. 522 Finish



No. 2168

Width 24 in. Height 34 in.  
Seat 21 x 20 in. Back 19 in.



No. 2164

End Table

Top 18 x 27 in. Height 21 in.

Maple Plywood Top or Formica Top  
Matching No. 522 Finish



No. 2188

Step Table

18 x 27 in. Height 25 in.

Maple Plywood Top or Formica Top  
Matching No. 522 Finish



No. 2167

Corner Table

Top 27 x 27 in. Height 21 in.

Maple Plywood Top or Formica Top  
Matching No. 522 Finish



No. 2242

Width 23 in. Height 32 in.  
Seat 22 x 21 in. Back 18 in.



No. 2244

Width 22 in. Height 32 in.  
Seat 22 x 21 in. Back 18 in.



No. 2243

Width 23 in. Height 32 in.  
Seat 22 x 21 in. Back 18 in.



No. 2240

Width 24½ in. Height 32 in.  
Seat 22 x 21 in. Back 18 in.



*French  
Provincial*



**No. 2161**  
Arm Chair

**No. 2162**  
Card Table  
Top 32 x 32 in. Height 29 in.  
Maple Plywood Top or Formica Top  
Matching No. 522 Finish



**No. 2162**  
Card Table  
Top 32 x 32 in. Height 29 in.  
Maple Plywood Top or Formica Top  
Matching No. 522 Finish



**No. 737-8**  
Seat 17 x 15½ in. Back 16 in.  
Slip Seat



**No. 737-10**  
Extension Table  
Top Closed 32 x 46 in. 58 in Extension  
Maple Plywood Top or Formica Top  
Matching No. 522 Finish



**No. 2110**  
Seat 16½ x 15 in. Back 16 in.  
Slip Seat



**No. 2160**  
Drop Leaf Table  
Top Closed 26 x 44 in. Top Open 44 x 66 in.  
Maple Plywood Top



**No. 2115**  
Width 21 in. Height 33 in.  
Seat 19 x 17½ in. Back 16½ in.  
Slip Seat





**No. 2110**  
Seat 16½ x 15 in. Back 16 in.  
Slip Seat



**No. 2276**  
Oval Extension Table  
Top 40 x 60 in. Extends to 40 x 74 in.  
Maple Plywood Top or Formica Top  
Matching No. 522 Finish



**No. 2115**  
Width 21 in. Height 33 in.  
Seat 19 x 17½ in. Back 16½ in.  
Slip Seat



**No. 737-8**  
Seat 17 x 15½ in. Back 16 in.  
Slip Seat



**No. 2169**  
Drop Leaf Extension Table  
Top Closed 26 x 44 in. Top Open 44 x 66 in.  
Extends to 96 in.  
Maple Plywood Top



**No. 2169** Open and Extended



**No. 2116**  
Server  
16 x 32 in. Height 32 in.  
Maple Plywood Top



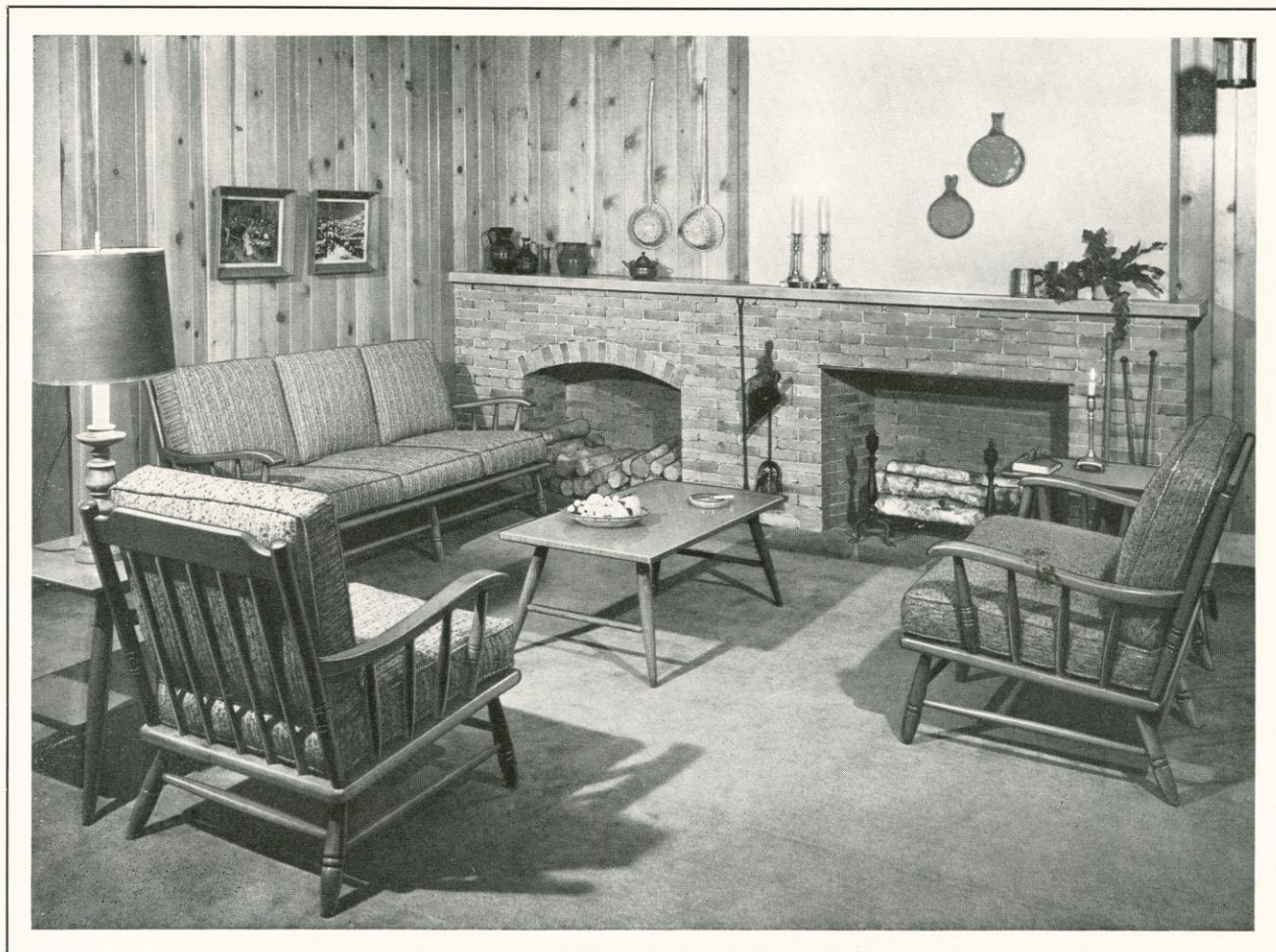
**No. 2111**  
Refectory Table  
Top Closed 30 x 43 in. 67 in. Extension  
Maple Plywood Top



**No. 2117**  
China  
16 x 32 in. Height 64 in.  
Maple Plywood Top



*Brewster Maple*  
FURNITURE



**No. 2260**

Width 26 in. Height 33 in.  
Seat 22 x 22 in. Back 19 in.

**No. 2260F**

Same as No. 2260, but with Flounce



**No. 2265**

Length 68 in. Height 33 in.  
Seat 22 x 64 in. Back 19 in.

**No. 2265F**

Same as No. 2265, but with Flounce

Reversible Seat and Back Cushions



*Brewster Maple*  
NO. 1234567  
 FURNITURE

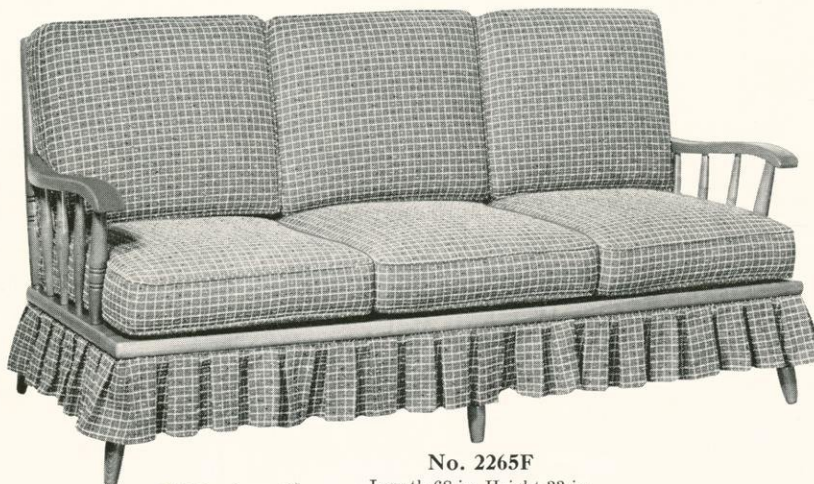


**No. 2296**  
 Width 30 in. Height 32 in.  
 Seat 20 x 20 in. Back 17 in.



**No. 2298F**  
 Width 30 in. Height 40½ in.  
 Seat 22 x 20 in. Back 27 in.

**No. 2298**  
 Same as No. 2298F, but without Flounce



**No. 2265F**  
 Length 68 in. Height 33 in.  
 Seat 22 x 64 in. Back 19 in.

**No. 2265**  
 Same as No. 2265F, but without Flounce  
 Reversible Seat and Back Cushions



**No. 2266 Love Seat**  
 Length 47 in. Height 33 in.  
 Seat 22 x 43 in. Back 19 in.  
**No. 2266F Love Seat**  
 Same as No. 2266, but with Flounce



**No. 2260F**  
 Width 26 in. Height 33 in.  
 Seat 22 x 22 in. Back 19 in.  
**No. 2260**  
 Same as No. 2260F, but without Flounce

Reversible Seat and Back Cushions



*Brewster Maple*  
FURNITURE



**No. 2322F**

Width 25 in. Height 32 in.  
Seat 22 x 21 in. Back 19 in.

**No. 2322**

Same as No. 2322F,  
but without Flounce

**No. 2324F**

Width 22 in. Height 32 in.  
Seat 22 x 21 in. Back 19 in.

**No. 2324**

Same as No. 2324F,  
but without Flounce

**No. 2293**

Corner Table

Top 27 x 27 in.  
Height 21 in.

**No. 2323F**

Width 25 in. Height 32 in.  
Seat 22 x 21 in. Back 19 in.

**No. 2323**

Same as No. 2323F,  
but without Flounce

Reversible Seat and Back Cushions



**No. 2320F**

Width 27½ in. Height 32 in.  
Seat 22 x 21 in. Back 19 in.

**No. 2320**

Same as No. 2320F, but without Flounce



**No. 2325F**

Length 72 in. Height 32 in.  
Seat 21 x 66 in. Back 19 in.

**No. 2325**

Same as No. 2325F, but without Flounce

Reversible Seat and Back Cushions



*Brewster Maple*  
FURNITURE



**No. 6239**

Width 25 in. Height 35 in.  
Seat 22 x 18 in. Back 21 in.



**No. 2009**

Width 30 in. Height 36 in.  
Seat 22 x 23 in. Back 21 in.  
Reversible Seat Cushion



**No. 6240**

Width 25 in. Height 33 in.  
Seat 22 x 18 in. Back 21 in.



**No. 2297F**

Platform Rocker

Width 26½ in. Height 38 in.  
Seat 22 x 20 in. Back 24 in.

**No. 2297**

Platform Rocker

Same as No. 2297F, but without Flounce  
Reversible Seat and Back Cushions



**No. 2321**

Width 27½ in. Height 32 in.  
Seat 22 x 21 in. Back 19 in.

**No. 2321F**

Same as No. 2321, but with Flounce  
Reversible Seat and Back Cushions



**No. 2324F**

Width 22 in. Height 32 in.  
Seat 22 x 21 in. Back 19 in.

**No. 2324**

Same as No. 2324F, but without Flounce  
Reversible Seat and Back Cushions



*Brewster Maple*  
FURNITURE



**No. 2280**

Width 30½ in. Height 36 in.  
Seat 21 x 20 in. Back 22 in.

**No. 2281** Wing Chair to Match  
Reversible Seat and Back Cushions



**No. 2285**

Length 70 in. Height 36 in.  
Seat 20 x 62 in. Back 22 in.

Reversible Seat and Back Cushions



**No. 2282**

Width 26 in. Height 36 in.  
Seat 21 x 20 in. Back 22 in.

**No. 2284**

Width 21 in. Height 36 in.  
Seat 21 x 20 in. Back 22 in.

**No. 2293**

Corner Table  
Top 27 x 27 in.  
Height 21 in.

**No. 2283**

Width 26 in. Height 36 in.  
Seat 21 x 20 in. Back 22 in.

Reversible Seat and Back Cushions





**No. 2077** Captain's Chair

Width 22½ in. Height 31 in.  
Seat 21 x 17 in. Back 14 in.

**No. 8036** Game Table

Top 48 in. Diameter. Height 30 in.  
Black or Stock Picwood Formica  
Top and Edge  
Also available with Maple Plywood Top



**No. 8036**

Top 30 x 48 in. Height 30 in.  
Black or Stock Picwood Formica  
Top and Edge  
Also available with Maple Plywood Top



**No. 2257**

Drop Leaf Table  
Top Closed 22 x 50 in.  
Top Open 50 in. Diameter  
Maple Plywood Top



**No. 2182**

Seat 16½ x 16 in. Back 17½ in.



**No. 2184**

Refectory Table  
Top Closed 32 x 46 in. 66 in. Extension  
Maple Plywood Top



**No. 2108**

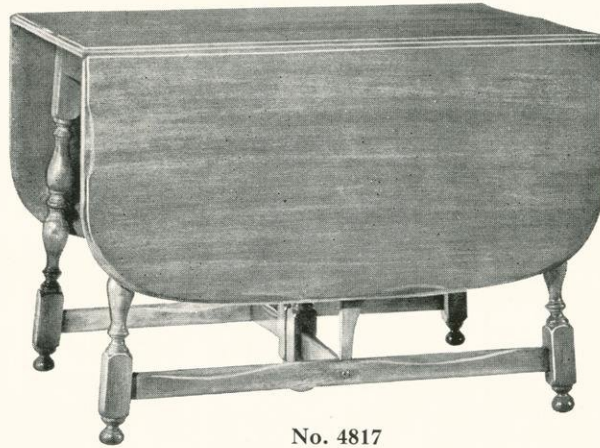
Seat 19 x 15 in. Back 20 in.  
Fibre-Rush Seat



*Brewster Maple*  
NO. 51 PAT. OFF.  
 FURNITURE



**No. 2077**  
 Captain's Chair  
 Width 22½ in. Height 31 in.  
 Seat 21 x 17 in. Back 14 in.



**No. 4817**  
 Butterfly Extension Table  
 Top Closed 25 x 42 in. Top Open 42 x 63 in.  
 Extends to 83 in.  
 Wood Top



**No. 2087**  
 Captain's Side Chair  
 Seat 18 x 16 in. Back 14 in.



**No. 2102**  
 Width 18½ in. Height 37 in.  
 Seat 15½ x 16½ in. Back 20 in.



**No. 2103**  
 Width 25½ in. Height 38 in.  
 Seat 21 x 16½ in. Back 22 in.



**No. 1849**  
 Seat 18½ x 16 in. Back 26 in.  
 Fibre-Rush Seat



**No. 2181**  
 Drop Leaf Table  
 Top Closed 22 x 50 in. Top Open 50 in. Diameter  
 Maple Plywood Top  
**No. 50 Lazy Susan**  
 20 in. Diameter



**No. 1915**  
 Seat 21 x 16 in. Back 25 in.  
 Fibre-Rush Seat



*Brewster Maple*  
MADE IN U.S.A.  
 FURNITURE



**No. 4873**

Seat 19 x 17½ in. Back 16 in.  
 Wood Back  
 Saddle Wood Seat

**No. 2203**

Same as above with  
 Upholstered Back



**No. 4872**

Seat 18 x 16 in. Back 16 in.  
 Wood Back  
 Saddle Wood Seat

**No. 2202**

Same as above with  
 Upholstered Back



**No. 2183**

Refectory Table  
 Top Closed 40 x 54 in. 94 in. Extension  
 With Maple Plywood Top  
 and Solid Banding



**No. 2299**

Side Chair  
 Seat 17½ x 16 in. Back 16½ in

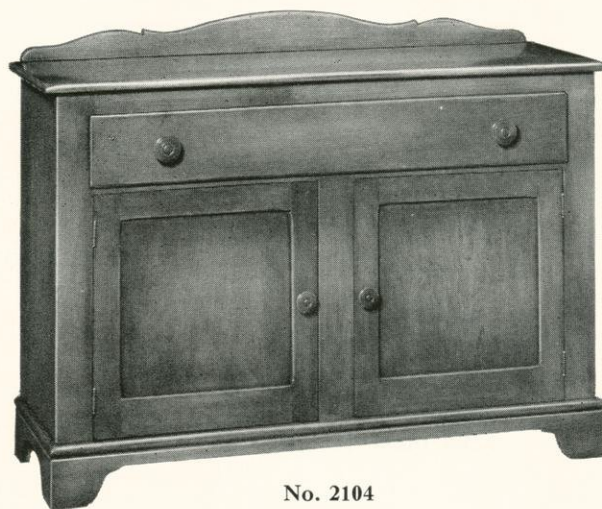


**No. 2105BR**

Hutch  
 16 x 48 in. Height 69 in.  
 With Brass Hardware

**No. 2105**

Hutch  
 Same as No. 2105BR, but with Wood Knobs



**No. 2104**

Buffet  
 16 x 48 in. Height 33 in.  
 With Wood Knobs

**No. 2104BR**

Buffet  
 Same as No. 2104, but with Brass Hardware



*Brewster Maple*  
NO. 1234567  
 FURNITURE



**No. 2291**  
 Step Table  
 17 x 27 in. Height 24 in.



**No. 2300**  
 Extension Table  
 Top 48 in. Diameter Extends to 48 x 62 in.  
 Maple Plywood Top Only



No. 2300 Open and Extended



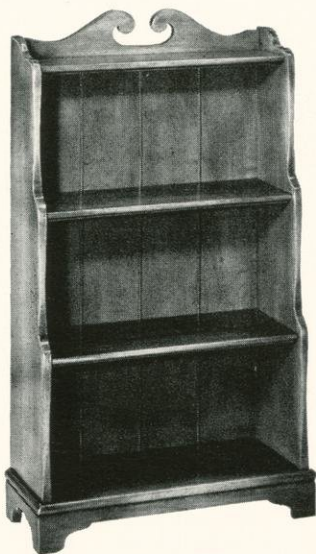
**No. 2290**  
 End Table  
 Top 17 x 27 in. Height 21 in.



**No. 2292**  
 Cocktail Table  
 Top 20 x 40 in. Height 17 in.



**No. 2293**  
 Corner Table  
 Top 27 x 27 in. Height 21 in.



**No. 6438**  
 Book Case  
 11 x 23 in. Height 40 in.



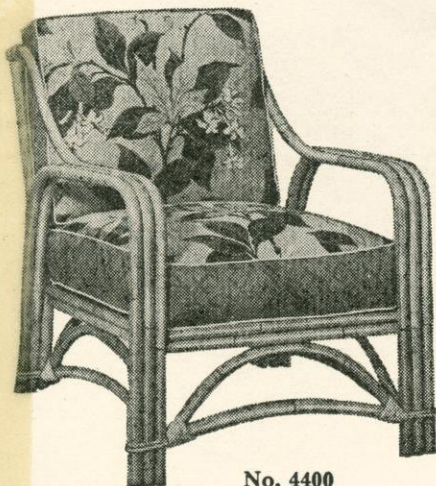
**No. 2294**  
 Lamp Table  
 Top 24 in. Diameter  
 Height 26 in.



**No. 2303**  
 Desk  
 Top 20 x 32 in.  
 Overall Height 31½ in.  
 Top to Floor 29 in.



**TROPIQUE**  
REG. U.S. PAT. OFF.  
*Furniture*



**No. 4400**

Width 28 in. Height 34 in.  
Seat 21 x 21 in. Back 19 in.

**Reversible Seat and Back Cushions  
Rattan**

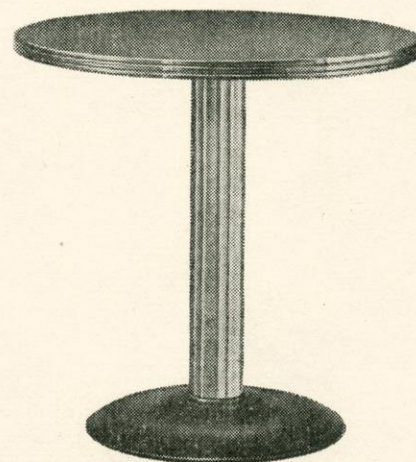
**OUR SPECIAL TROPIQUE CATALOG**  
illustrates our complete line of Rattan and  
Simulated Rattan — Write for your copy.

---

**CONTRACT FURNITURE**



Cudworth Post, American Legion, Milwaukee, Wis.



**No. 8003**

Cast Metal Base, Aluminum Column  
With Finished Plywood  
Formica or Linoleum Top

Various Sizes. Height 30 in.  
Round, Square or Oblong, up to 36 in.

**WRITE FOR OUR SPECIAL CONTRACT CATALOG**

for complete line of Chairs, Stools, and Tables in  
Plywood and Formica Tops.

**For Hotels, Public Buildings,  
Schools, Motels, Hospitals, etc.**

---



