



# **The daily cardinal. Vol. XXXVI, No. 74**

## **December 16, 1926**

Madison, Wisconsin: University of Wisconsin, December 16, 1926

<https://digital.library.wisc.edu/1711.dl/YSX6ORO7MD6K38E>

<http://rightsstatements.org/vocab/InC/1.0/>

The libraries provide public access to a wide range of material, including online exhibits, digitized collections, archival finding aids, our catalog, online articles, and a growing range of materials in many media.

When possible, we provide rights information in catalog records, finding aids, and other metadata that accompanies collections or items. However, it is always the user's obligation to evaluate copyright and rights issues in light of their own use.



# FIGHT!

Beat the Baptists!  
Beat the Baptists!  
Beat the Baptists!

# The Daily Cardinal

## WEATHER

Partly cloudy and continued cold today. Unsettled tomorrow with slowly rising temperature.

VOL. XXXVI. NO. 74

UNIVERSITY OF WISCONSIN, MADISON, THURSDAY, DECEMBER 16, 1926

PRICE 5 CENTS

## FORUM PROBLEM IS DISCUSSED BY STUDENT SENATE

Selections of Committees, Election of Eklund, Completed at Meeting

Consideration of the Student forum, selections of committees, and election of Laurence C. Eklund '27, associate editor of the Daily Cardinal, as senior member to fill the vacancy caused by the ineligibility of Herbert Stuessy '21 were important matters of business at the meeting of the Student senate yesterday.

It was decided that Richard Ludwig '28, Student forum president, should appear before the senate at this meeting to explain the aims and organization of the forum. A resolution to recognize the Student forum was laid on the table pending the appearance of Ludwig before the board.

### Control of Speakers

The question of Student senate control of student organizations in the matter of bringing speakers to the university was brought up for discussion. Walter Wilke '28, Student senate member and president of the Forensic board, voiced the opinion that engagement of lecturers in conjunction with the Student senate would be advisable. He declared that the securing of speakers by the various organizations interferes with the functions of the Forensic board. The matter was referred to the judiciary committee for investigation.

A contract with the Co-op for the sale of freshmen caps for the next two years was approved.

### Committees Named

An executive committee with Daniel Kerth '27, president of the senate, as chairman ex-officio, Joseph McCartney '27, and John Gillin '27, as members was elected at yesterday's meeting.

Bryant Gale '29, Wesley Peterson '28, and Charles Nelson '27, will serve on the joint government committee. The judicial committee elected yesterday consists of Donald Barr '28, Walter Wilke '28, and Harry Thoma '28.

## HOLD CHRISTMAS CAROL SERVICE

Prof. E. B. Gordon Leads Holy Singing in Music Hall Yesterday

A Christmas Carol service was held at 4:30 o'clock yesterday afternoon in Music hall. Prof. E. B. Gordon of the School of Music led the singing an orchestra and a chorus assisting him.

The program was opened by singing "O Come All Ye Faithful", "O Little Town of Bethlehem" and "Deck the Hall." Miss Louise Rood gave a violin solo, which was followed by everyone singing "The First Noel" and "Hark the Herald Angels Sing." Ex-president Birge gave a short address on the meaning of our Christmas.

"Christmas is the holy and symbolic day of the Christian religion, being the birthday of Christ," said Dr. Birge. "It is uniquely different from other religions in that Mohammadanism and Buddahism have chosen as their holy days, days of action and events.

"Buddahism is a philosophical religion, for Buddah told his people what their lives would be. Mohammadanism is a military religion, symbolizing the day when it conquered a great area. But Christianity is a religion of life, for the solution of life which our Lord brought was in life itself."

The program was concluded by singing "Silent Night."

## Iron Cross Elections

Class of 1927

Charles E. Nelson  
Vernon G. Carrier

## Queen of 1928 Junior Prom!



HELEN ANN HUGHES '28

—Photo by DeLonge.

## CONCERT BAND ON STAGE AGAIN TODAY

Will Offer Sequel to Sunday's Popular Appearance

A program of concert music, Major Morphy's and the concert band's Christmas gift to the university will be presented at 4:30 o'clock this afternoon in Music hall. To those who suffered the disappointing experience of being locked out of the orchestra concert Sunday and to others who are planning to attend the program Major Morphy advises early arrival to insure admittance.

Ballet music from Gounod's opera, "Faust," comprises a major portion of the program. The light dance rhythm of this group will effectively balance the Massenet's dramatic overture "Phedre." The complete program follows.

- St. Clair ..... March "Steel King"  
Massenet ..... Overture "Phedre"  
Gounod ..... Ballet Music from opera "Faust."  
a. Waltz for the corps de ballet.  
b. Ensemble of Helen, the Trojan Maidens, Cleopatra and her Nubian Slaves.  
c. Entry of Nubian Slaves.  
d. Pas Seul of Cleopatra.  
e. Entry of the Trojan Maidens.  
f. Pas Seul of Helen.  
g. Bacchanale and entry of Phryne.

## Jack Pops Question to Tune of Whistling Wind and Runners

Suspense is Over; Leading Lady is Asked on Frozen Mendota

Helen Ann Hughes '28 will be Queen of the 1928 Junior Prom! Jack popped the question to the accompaniment of the frigid north wind strumming through the stays of his iceboat as Helen and he skimmed over the glassy surface of Lake Mendota last Tuesday afternoon.

Miss Hughes is from Lima, Ohio, and is registered as a first-semester junior in the College of Letters and Science. She is chairman of the W. S. G. A. scholarship committee, and played the feminine lead in "The First Year," recently produced by the Wisconsin Players. She is a member of the Delta Gamma sorority.

An uncle and aunt of Miss Hughes live in Madison. They are Prof. and Mrs. William S. Mandell, 139 E. Gilman street.

The 1928 Prom Queen in her freshman year attended the Western College for Women at Oxford, Ohio. Her next year was spent in Lycee de Jeunes Filles, at Tours, France. She did not receive credit for work done in France, however, and is registered as a first-semester junior. She entered the university a year ago this fall.

## ATHENA DEFEATS HESPERIA IN 60TH ANNUAL DEBATE

Winners Point Out Weaknesses of Student Self-government

By WARREN C. PRICE

Athena literary society, upholding the negative of the question, "Resolved that this House Shall Stand Opposed to Student Self Government at the University of Wisconsin," defeated Hesperia last night in the 60th annual joint intersociety debate in Music hall. The debate was closely contested and was decided in favor of the negative by a vote of the judges of 2 to 1.

Athena was represented by Walter Wilke '28, Alex Soroka L. S. and John Kyle '27. Robert Rasche '28, Ervin Weirke '28, and Richard Church '27 upheld the affirmative for Hesperia. Judges of the debate were E. W. Wells, H. W. Stuart, and Miss R. Rousseau of the speech department. Prof. William H. Kiekhofor of the economics department acted as chairman.

### No Self-Government

The negative upheld the statements that at present student self-government at the university practically does not exist, but that all extra-curricular activities are controlled by the faculty. It proposed, in its argument, to help create student government at the university by removing faculty supervision of activities entirely, and letting students govern their own policies in outside work.

By this means, the negative hopes to increase the interest of students in campus activities and enliven them to a greater degree than they enjoy at present. As an example, the third speaker of the negative, Kyle, illustrated the case of the Daily Cardinal during the present semester. The fact that the paper's editorial policy has been unaffected by faculty rule (Continued on page two)

## DUNLAP '25 GETS PUBLICITY POST

Former Cardinal Editor Appointed to New Station at Penn State

Wes W. Dunlap '25, former managing editor of the Daily Cardinal and present telegraph editor of the Minneapolis Tribune, has been named assistant director of the publicity department of Pennsylvania State college according to a communication received last night from D. M. Cresswell, director of public information at the Pennsylvania school.

Dunlap, who was graduated from the university in 1925, majoring in journalism, will have charge of sport news coming from the university as well as acting as a press representative for college faculty members. His selection was made upon a recommendation by Maynard Brown, Wisconsin graduate, who is now associate professor of journalism at the Kansas State Agricultural college and secretary of the Association of College News Bureaus. The addition to the information department was made with the view of eventually promoting Dunlap to the directorship of the publicity department.

Dunlap was editor of the Daily Cardinal in his senior year. He was elected to membership in Sigma Delta Chi, professional honorary journalistic fraternity, and Phi Kappa Phi, honorary scholastic and activities fraternity. In the R. O. T. C. at the university he was connected with the intelligence department. He was a member of Delta Sigma Phi fraternity. Shortly after being graduated Dunlap accepted a position with a newspaper at Rochester, Minn. Later he became telegraph editor of the Minneapolis Tribune. He will begin work at the Pennsylvania institution about Jan. 1.

## Reveal History of Magnificent Campus Edifice

(This is the third of a series of articles about the departments of the Library Building.

BY DONALD HARTER

The State Historical Society of Wisconsin is responsible for the building of the beautiful structure on the lower campus and for the various useful activities which are being carried on within the building.

The State Historical library was built on a portion of the lower campus primarily to give research collections. It also houses the university library and the reading room is common to both. The historical library is the general library (Continued on page two)

### ON THE EDITORIAL PAGE TODAY

1. Iron Cross Elections.
2. That Study Commission.
4. Reforming Reform
5. Readers' Say-So.



## 60TH ANNUAL DEBATE DECIDED FOR ATHENA

(Continued from page one)  
ing has brought out student opinions more this year ever before, according to Kyle, in his belief, all student activities would arouse the same interest if left entirely in control of the students.

### Show Impracticability

In its opposition to the question of self government, the Hesperia team contended that it is impracticable inasmuch as students do not want it, that they have not time for it, and that they are incapable of handling governmental powers.

Students realize that student self government does not mean that they govern themselves, said the affirmative speakers, but that they are governed by a small group of students who cannot understand the importance of the task they are undertaking, and hence the general student body would not want it.

In his plea for placing government with the faculty, Church said that students should place government where it belongs and where students may safely entrust their welfare to meet the better ends of life.

## CHILDREN TO BE FETED AT Y. M. C. A. TOMORROW

A hundred children from the Neighborhood house, 738 W. Washington avenue, will be entertained at a Christmas party by the University Y. M. C. A. tomorrow night at 6:30 o'clock by a group of university men. Gifts, games, refreshments and Santa Claus will be the features of the evening, according to Arthur Gosling '28, chairman of the committee in charge. Men

## STORY OF FOUNDING OF HISTORICAL LIBRARY

(Continued from page one)  
of the state and now specializes in material dealing with the western hemisphere and Great Britain. It was organized in 1849 as a reference library, and in consequence only a limited number of books are allowed to be withdrawn from the building.

Students using the catalogue should be careful to note the date of the book to be asked for, calls frequently being made for material that was printed at such an early period as to be of little use in studying the modern phase of a subject.

Students are urged to note that many references given for class use are to be found in general works. By careful attention to the cards they will find that the title of the book to be called for is printed below the title of the article wanted and indicates the volume and page where such article may be found.

In 1845 Richard H. Magoon, of what is now Lafayette county, suggested that a territorial historical society "collect from the pioneers then alive such facts in regard to the early history of Wisconsin as they might possess, as well as to treasure up those concerning the future."

Several organization meetings were held culminating in the societies formation four years after the idea was proposed.

working on the committee are Gale Ford '28, Maurice Coakley L1, Irving Cherdron '28, Herman Kerst '30, and Normal Neal, graduate.

# A dignified business

Any retail business that has grown to a volume of more than \$100,000,000 a year must be founded upon sound business principles.

Kresge's is a dignified business. It meets the everyday human needs—of folks everywhere.

The S. S. Kresge Company has developed the art of retail store-keeping to the point where it may well be termed a science. Merchandise of standard grade is sold in Kresge stores—but in such quantities that prices are consistently lower than in stores that lack the organization and resources of a great national institution.

There are already more than three hundred stores in the Kresge chain—and new ones are being added constantly. For these new stores we shall need managers—competent men, thoroughly experienced—and Kresge-trained.

A limited number of young men—college men of good character and promise—will be given the opportunity to train for these positions. Write at once and arrangements will be made for you to meet one of our representatives. He will tell you all about our organization and the opportunities it offers college men.



HARRY W. REPERT

from newsboy to  
Kresge Store Manager

When a boy, Mr. Reppert attended school in Reading, Pa., where he sold the Saturday Evening Post to earn spending money.

Later he attended Wharton School of Accounting and Finance, University of Pennsylvania. Mr. Reppert has this to say of his business career:

"I became acquainted with a Kresge store manager and heard the story of the Kresge plan of intensive training on a practical scale. After a week's deliberation, I started in training."

"Remember this: I held a good position in a steel mill (with my own letter heads, desk, stenographer, etc.) and was reputed to be the future superintendent of the department in which I was working."

"My friends and business associates couldn't see the future of the chain store business. They actually laughed at my change from a comfortable position to stockman in overalls. But today, thanks to my own judgment and the Kresge Company, I have reached the point where I am managing a store of my own (Dunkirk, New York), have increased my earning power considerably and best of all, I have a future that is worth while ahead of me."

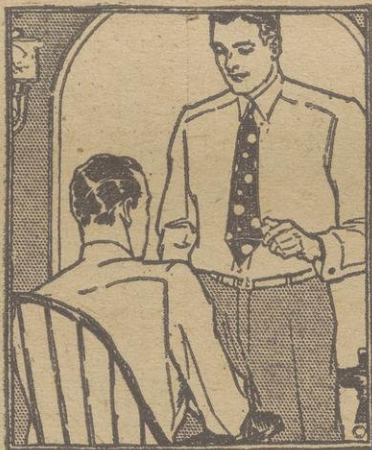
Personnel Dept

**S S KRESGE CO**

3\* 10\* 25\* STORES • • • 25\* 4\* 12\* STORES

Kresge Building  
Detroit Mich

## STORE OF FRIENDLY SERVICE



## The Karstens "Grid" Shirt is here!

UNIVERSITY MEN who have been expecting this new shirt—specially designed to our order—will be pleasantly surprised. The round-pointed collar gives a distinctive, smart finish to a splendidly-tailored shirt...

The materials are basket-weave cheviot and fine broadcloth; its hard to say which is the best looking....

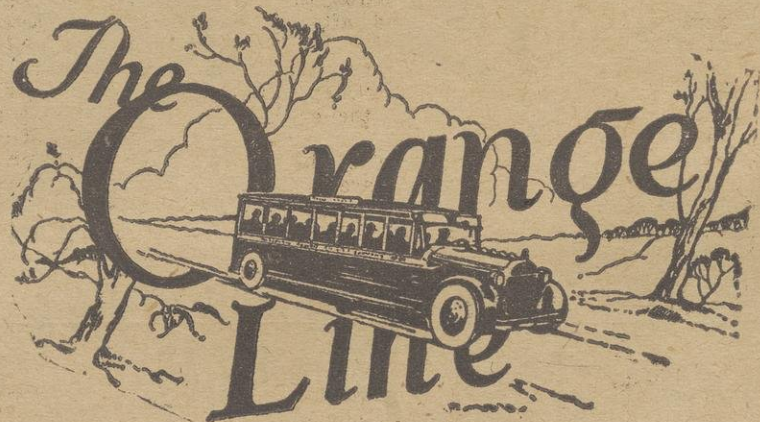
You'll want to pack your holiday bag with several of these...

**\$2.50 \$3.50**

**KARSTENS**

On the Square - Carroll near State - Badger 453

## Reserve Your Seat on



## Student Special For Your Trip Home

We are offering a special service to students traveling out of Madison home for Christmas via our motor coach lines. To avoid crowded conditions, and enable everyone to be sure of a seat, reservations can be made for any trip up to 11:00 P. M., Friday evening, December 17.

To obtain a reservation we ask that you buy your ticket early, the reservation to be given without extra cost at the time the ticket is purchased.

Early reservations for Fond du Lac and Oshkosh which are received will be made on a through non-stop special. Buy your ticket now and be sure of a seat.

### SCHEDULE FOLLOWS

Lv. Madison for Fond du Lac and Oshkosh  
7:30 A. M., \*10:15 A. M., 1:15 P. M., 5 P. M., 8 P. M.

Lv. Madison for Portage  
7:00 A. M., 2:00 P. M., 5:45 P. M.

Lv. Madison for Prairie du Sac  
9:30 A. M., 5:00 P. M., †8:30 P. M.

\*Daily except Sunday, †Sundays only.

Information regarding connections for other points can be obtained at the Union Station, BADGER 4110

**WISCONSIN LIGHT & POWER CO.**



## Daily Reports of Badger Teams

# CARDINAL SPORTS

## Athletics in the Collegiate World

### TRAINING TABLE TIPS

Who's Franklin?

Who's Wabash?

Who's Depauw?

Tonight, the football men are scheduled for another evening of heavy fork-handling, this time by kindness of the Madison association of commerce.

And tomorrow night, the basketball men are scheduled for an evening of high-geared passing and guarding, aided and abetted by some snappy resistance from Franklin college.

Although nobody who knows anything about it makes predictions when a Franklin college basketball team is involved, many fans feel that Wisconsin has the best chance in several years to repay the Baptists for past insults. At all events, Franklin has not the smooth scoring machine she once had, and the game should be a regular score-border jerker.

Purdue cut through the curtain with a 40-27 conquest of Indiana State Normal Tuesday night. "Cotton" Wilcox, late of the football team, and Wilson kept the State Normal forwards well out on the floor, while Wheeler, forward, and Stevenson, center collected five field goals per each to keep the Boilermakers well up front in the score.

Over at Michigan the boosters are agog concerning the prophesied matriculation next year of one William Martin Heston. Merely because his father is Willie Heston and because he himself was the greatest backfield star on Detroit Northwestern High school's eleven this fall, great things are expected of William Martin. During his final prep season, the young man secured nine touchdowns, a goal from the field, and six points after touchdown, winning a place on the all-city team.

Which brings inevitably to mind his four years at Michigan, never played on a losing team. The elder Willie scored 93 touchdowns during his college career for a total of 465 points, a record never since even approached by any other athlete. That was Willie Heston, by whose figurative side as a plunger, many persons place Herb Joesting, Minnesota's modern-day battering ram.

Athletic standards over the nation vary. Instance Columbia university's recent action in making basketball a major sport for the first time. Last year, after they had beaten every opponent and set themselves up as champions of the east, Columbia's basketballers received minor letters. Football, track, baseball and crew have long been approved sports at this school and even the men who row in the junior varsity shell are awarded major letters.

Prominent among the Navy basketball men are Hamilton and Shapely, who two short weeks ago, played moving parts in the Army-Navy, 21-21 melodrama at Chicago. Both lads are guards and report from the east have it that they team together exceedingly well.

### Countess Wins In Ruling On Million In Leiter Case

CHICAGO—(C)—A million dollars interest, paid by Joseph Leiter to his father's estate when he purchased from it in 1923 the Zeigler coal mines, was held today by Judge Denis E. Sullivan to be a part of the body of the estate and not divisible among present heirs, as income.

The decision was a victory for the Countess of Suffolk, Joseph's sister, who is suing for Joseph's removal as a trustee of the estate.

The countess had contended that the interest on the Zeigler mine purchase would go into the estate to be held

### GYMNASTS, FENCERS IN DAILY WORKOUTS

#### Prepare for Year of Hard Meets, Says Coach Masley

With a schedule of four conference meets, a preliminary tilt with the Milwaukee Y. M. C. A., and a final wind-up with an all-conference gathering at Chicago, the Wisconsin fencing and gymnast squads are being put through the paces daily in preparation for the coming year by Coach A. L. Masley.

Working with a squad of 13 gymnasts and 12 fencers, Coach Masley is slowly developing his men, so that when the season is ushered in February 5, the men should be in the pink of condition to carry the Badgers to a respectable place in the all-conference meet.

"The prospects for a winning team seem very bright this year," asserted Coach Masley. "Although the candidates have shown better this year than at the same time last year, the injuries which have been received since the beginning of the season have hindered our progress greatly. The chief difficulty with the 1925-26 squad was the lack of varsity material, since the season was started with only five old men."

"This year the difficulty has been with injuries sustained by the regulars, thus hampering our work in the practice sessions. The chief aim of the rehearsals so far has been to condition the men and develop their endurance qualities."

The prospects of the Badgers are brighter in fencing than in mat work, according to Coach Masley. Both groups have tested their ability on the freshmen. Already this season there has been a frosh-varsity contest, and while the long end of the score was in the hands of the latter, the Frosh gave a good account for themselves.

"One of the biggest difficulties encountered in developing a gymnast and fencing team," Coach Masley declared, "is the factor of the deficiency in the number of regulars. Each man must be trained individually for his position, either on the bars, the mat, or on the horse; and after a man has been trained for his position, in case of an injury, there is no one who can readily step in as a substitute for all the events that he is listed."

The personnel of the fencing and gymnast teams are as follows:  
Fencers: A. Asplund; D. F. Crane, H. H. Dayton, Capt. Elmer Freytag, I. I. Gopadze, A. L. Hollister, E. Dee Ingold, G. L. Kashin, M. W. Paula, Z. Rabbe, and P. L. Waters.

Gymnasts—Captain J. A. Neller, A. W. Bartlett, M. S. Brill, H. Felton, J. J. Grunwald, D. R. Hindereiter, W. M. Kolinski, Emil Kuhe, J. A. Miller, J. H. Rhodes, O. Schoerke, W. Snively, Paul Vornholt.

The schedule for the 1927 season is the following:

Feb. 5—Milwaukee W. M. C. A. at Madison.  
Feb. 12—Minnesota at Madison.  
Feb. 19—Purdue at Madison.  
Feb. 26—Chicago at Chicago.  
Mar. 5—Iowa at Iowa City.

March 11 and 12, All-conference and Middle Western meet at Chicago.

In arranging this chart, the Badger Coach secured fencing engagements to take place with the gym meets. The only meet that will be devoted entirely to gymnastics is that with the Gophers, who do not compete in fencing.

### Driving Club To Meet Tonight; Plan Ice Races

Persons interested in horse racing are urged to attend a meeting of the Madison Driving club, tonight, at 7:30, at the office of Dr. J. P. West, 753 E. Washington ave. Horse racing on Lake Monona this winter will be the topic of discussion and officers of the club will be elected.

for division among her father's grand children.

### Pep Fest Starts Annual Civic Club Football Banquet

Promptly at 5:15 o'clock this evening, at the Park hotel, the pre-banquet pep meeting will start under the active direction of Lawrence W. "Larry" Hall.

A special platform has been arranged for in the lobby where Joe Shoer's Parkway orchestra, will tune up for the fifth annual football banquet being staged under the auspices of the Association of Commerce and the service clubs of Madison.

Prof. Carl Russell Fish, known nationally as the hero of the red vest and derby, will inject into the gathering hordes of some 450 business and professional men, and athletes, the proper pepper to perfect the opening of the biggest football banquet ever staged in honor of Wisconsin varsity squad and coaches.

William B. Goldie, secretary of the "W" club in Milwaukee, "Bill" Juneau, "Art" Curtis, "Jerry" Rioridan, "Andy" Bruce and "Slam" Anderson will vie with such enthusiasts as "Tkey" Karel in making the old lobby roar with Wisconsin spirit.

Every holder of a lucky ticket for the banquet is urged to be on hand at 5:15 o'clock sharp or he will miss the big bang off.

### ELLESON RETURNS FOR TRACK WORK

#### Will be Back Second Semester; Boosts Cinder Stock Up

A ray of hope hit the Badger cinderpath squad with the rumor that Earl Elleson, star distance runner on the cross-country team of 1925 would return to school the second semester and be eligible for varsity competition on Coach Tom Jones' track squad.

Elleson it will be remembered was a member of the harrier squad that romped away with the Big Ten title in 1925. Elleson finished third. However, the West Allis star stumbled with the ever present ineligibility bugaboo and was out the second semester when it was expected that he would be one of the real mainstays of the outdoor track squad.

Elleson is built perfect for a runner having powerful legs and great breadth of chest that allows mighty lung power. While at Ripon college he held the state title for the half, mile and two mile events, in fact won all three of them in the state college meet and on the same day.

In the last Olympic tryouts, Elleson placed tenth in the final trials for the mile, the distance race being won in time that was close to 4:12. Critics express a confidence that Elleson with a season under Tom Jones, Badger coach, would turn in a time for the mile that would easily border on the edge of 4:15.

The return of Elleson would give Jones a great four mile relay team for the coming in door and outdoor carnivals. Chapman, Schutt and Johnny Zola would round out a quartet of milers that would be hard to equal anywhere in the Big Ten or middle west. Elleson's return hangs on the balance of the assertion that he has cleaned up all his deficient work and can return to school with a clean slate for the second semester.

### INTRAMURAL NEWS

Wrestling tonight:  
Sigma Pi vs. Farm House—7 p. m.  
Alpha Gamma Rho vs. Sigma Chi—8 p. m.

### British Woman Novelist, Missing 2 Weeks, Found

HARROGATE, England—(P)—Agatha Christie, writer of detective novels, who disappeared from her home almost two weeks ago, was found here today after a search that extended all over England.

MINERAL POINT, Wis.—Ader Appel, 69 probably the barber with the longest service in the state died Saturday morning at the home of H. J. Kieffer, in Mineral Point. He had been working for 54 years.

### WILKE, STRAUBEL IN EAST-WEST TILT

#### Will Appear With Slaughter in Coast Grid Game

Two members of the Wisconsin football team, Earl Wilke, and Austin Straubel, will play in the annual East-West benefit game at Los Angeles New Year's day according to an announcement made yesterday.

"Butch" Slaughter, Badger line coach who has also been chosen to play in the game, was instrumental in the selection of Wilke and Straubel. The three will take part as members of the Eastern team of which "Navy Bill" Ingram is coach.

Wilke, who plays at center, is from Milwaukee. He was one of the most consistent linemen on the Wisconsin eleven this year and several experts mentioned him for all-conference honors.

Straubel, a tackle from Green Bay, played in every game of the past season and was regarded as a powerful forward.

Both men graduate this year.

### GRIFFITH CALLS BIG TEN MEETING

#### Calls Directors Together to Decide if Big Ten is a Playing League

CHICAGO—The scholastic, financial, alumni and athletic leaders of the western conference will meet here late in January, it was announced last night by Maj. John L. Griffith, athletic commissioner of the Big Ten, to decide whether the conference is a "playing league."

Three important problems are to be presented to the assembly: Whether the conference is a playing league; athletic schedules, and equality of competition.

"A great many of the alumni," said Maj. Griffith, "and also the public, are insisting that the conference should determine championships formally each year, and with that in mind, are insisting that schedules be arranged for that purpose."

"As it is necessary that two teams competing in a game shall observe one code of playing rules, so that the conference authorities are agreed in the interests of equal and fair competition, it is further necessary that the ten conference universities respect uniformity in the matters which pertain to playing conditions off the field."

"The athletic directors believe that while there is very little proselyting and illegitimate recruiting on the part of the conference universities, yet they realize there has been in the past no prescribed uniform standard binding alike all universities."

"This meeting should be of great value in assisting in the constructive work of the conference, and since all phases of university life will be represented, will probably be more far reaching in consequence than any conference meeting previously held."

The ten university presidents, the ten chairmen of the board of regents, the ten faculty representatives on the Big Ten, an alumnus from each university and the athletic directors and football coaches have been invited to the meeting, and practically all have signified willingness to come, Maj. Griffith said.

### Blaine Investigator To Open Klan Probe

MARINETTE, Wis.—Attv. F. M. Wiley of Madison, who has been named by Gov. Blaine as special commissioner to take testimony in the cases of the five local men removed by the governor after they had been sent to the workhouse for participation in the Klan riot last June, will arrive here tomorrow to conduct the hearing. The governor will decide after examining the commissioners' report, whether he will pardon or parole the men or return them to the workhouse.

### WISCONSIN OPENS CAGE SEASON WITH FRANKLIN GAME

#### Opening Play Set for Tomorrow Night; Baptists Strong

Interest in the opening basketball game with Franklin tomorrow night is growing in leaps and bounds and a great and enthusiastic crowd will be on hand to see Coach Meanwell's latest Badger basketball machine in their initial appearance. The fact that Meanwell is bringing such a worthy foe here for the opening tussle has heightened the interest in the battle and the old gymnasium will be the host to another over flowing crowd.

The Franklin cagers meet Indiana tonight at Bloomington and immediately after that game will board the train for Madison for the game here. It will be necessary for the Baptists to travel all night to get here in time and such a hard trip plus the hard battle it is expected the Hoosiers will give them ought to give the Badgers an added advantage in physical prowess.

#### No Serious Injuries

The injuries to Charley Andrews and Louie Behr have proved less serious than was at first reported and both of the Rockford forwards should be in fair condition to help battle the invaders. Andrews will wear a mask while Behr's leg has undergone some careful treatments under Meanwell's careful eye and the star forward will only be slowed up a trifle.

The Franklin quintet has already tasted defeat at the hands of the Central Normal aggregation early this week 33-31 but lost only after a final five minutes spurt by the Danville cagers. The game was played at Danville. According to reports, Captain King of the Franklin outfit played a whale of a game and was a menace every minute of the game. The two sophomore members of the team also came through in fine style in their opening game and gave every indication that they are going to be real basketball players.

#### Light Scrimmages

Dr. Meanwell has called off the heavier scrimmage sessions and is now drilling his team on speed and passing work. It is the opinion of those who have watched these practices that Dr. Meanwell is all set to show the Badgers a real surprise when his passing and floor work is brought into play.

### No Cash, No Sing Saves Talley; Audience Waits

When Miss Marion Talley sings in concert she must be paid in advance. The youthful Metropolitan opera star failed to sing at a concert last night because \$3,000, the sum guaranteed her for her appearance, was not paid in advance. A capacity audience of 1,300 persons was disappointed and Miss Veronica Gouvers, a teacher at the New Rochelle college for women, who promoted the affair, was reduced to tears. The concert was cancelled by Miss Talley's manager, although several persons in the audience offered to make good the guarantee.

### Valentino's Treasures Are Sold; Menjou One Buyer

HOLLYWOOD, Calif.—(P)—A throng of men and women from the middle walk of life, strangely out of harmony with the glittering array before them, matched bids here yesterday with a scattering of film folk, professional men and tourists for the personal treasures of Rudolph Valentino, in an auction sale to dispose of the late screen star's worldly goods. The bidding was spirited. Adolph Menjou was the only purchaser from the film colony. He paid \$390 for an antique cabinet and \$1,750 for a Spanish carved screen.

WASHINGTON—(P)—John W. Caldwell of Berkeley, Calif., who shot himself Monday while in the capitol building, died today of his wounds.



# The Daily Cardinal

Founded April 4, 1892

University of Wisconsin official daily newspaper owned and controlled by the student body. Published every morning except Monday by the Daily Cardinal company, at the Union building, 772 Langdon street, and at the Capital Times building, 106 King street, Madison, Wis. Printed by the Capital Times company. Member of the Western Conference Association.

Entered as second class matter at the postoffice at Madison Wis.

Subscription rates—\$3 a year by carrier; \$3.50 a year by mail; \$1.75 a semester by carrier, \$2 a semester by mail. Single copies 5 cents.

Editorial office—Union building, phone B. 250 before 5:30 P. M.; Capital Times, phone B. 1137 after 7 P. M.  
Business office—Union building, phone B. 6606 before 5:30 P. M.

## BOARD OF CONTROL

ELMER W. FREYTAG, President; Florence Pollock, Vice-President; Luther E. Brooks, Treasurer; Winifred Wise, Secretary; James Sipple, Acting Member.

## EDITORIAL STAFF

MANAGING EDITOR.....JAMES M. NELSON  
Associate editors.....Vernon Carrier, Laurence Eklund,  
Louise Zimmerman  
Weekly Editor.....Vernon Carrier  
Weekly assistants.....Marvin Lehmkuhl, Edward Jennison  
Woman's editor.....Esther Hawley  
Sports editor.....Stanley Kalish  
News editor.....Beatrice Aronson  
Night Manager.....John Gillin  
Desk editors.....Adelbert Bearder,  
Arthur Senske, Alexander Gottlieb,  
Joseph Hobbins, Marvin Lehmkuhl, Clarence Schlaver  
Society editor.....Herb Powell  
Literary editor.....Lucille Bohren  
Theatre editor.....Wesley Peterson  
Music editor.....Florence Schauer  
Alumni editor.....Annette Hirschfeld  
Junior editors.....Helen Liebman,  
Muriel Markham,  
Catherine Colburn  
Exchange editor.....Kathryn Handy  
Librarian.....Catherine Kuehn  
Desk assistants.....Richard Clement, Hamilton Beatty, Herbert Stuessy  
Special Writers.....Helen Allyn, Russell Bookhout,  
Sylvia Dermansky, Gene Duffield, Donald Harter, Tom  
Kirmse, Renee Newman, Judith Nimman, Dorothy Pot-  
ter, Warren Price, Harold Reiger, Idabel Sine,  
Reporters.....Margaret Alsop, Fannie Bauer, Marie  
Heuer, Richard Johns, Ruth Lauder, Diderich Lunde,  
Harrie Morgan, Lester Velie.

## BUSINESS STAFF

BUSINESS MANAGER.....NORBERT W. ESCHMEYER  
Associate business managers.....E. E. Judkins, Calvin Koehring  
Assistant business manager.....Edwin H. Ferree  
Local advertising manager.....Clayton O. Braatz  
Foreign advertising manager.....Paul Schultz  
Circulation manager.....Joe Bacon  
Circulation assistant.....Florence Pollock  
Office assistants.....Dorothy Brown, Margaret Nutting  
Office assistant.....Margaret Olds  
Assistant advertising managers, William Beck, Marvin Fein  
Advertising assistants.....Jane Rehfeld, Erwin Hinz,  
Dorothea Zarbell, Marjorie Roy, Melvin Swanson Orval  
Bast.

DESK EDITOR—JOSEPH F. HOBBS

## Iron Cross Elections

Out of a maze of honorary societies on the campus a few stand supreme. Yesterday morning one of these greater societies announced the election of two seniors to its membership. Iron Cross holds the position of being the most worthwhile honorary organization at Wisconsin, both in point of tradition and service.

Iron Cross stands out for the embodiment of the Wisconsin spirit. It represents the best in the community life of the campus. It has kept alive for years the principle that success is measured by the achievements one has made that add lasting honor to his Alma Mater.

Each year a few men are selected to Iron Cross. They are men who have contributed to the direction of our community, men who have given unselfishly of their time and energy to make Wisconsin a greater and better university. Too often senior honorary societies are shallow rewards for elections won or positions held. Iron Cross has shown by its careful selection of men whose breadth of vision has not been narrowed by selfish interests that it is one of the few meritorious senior organizations in the country.

The two men whose names appeared on the cross yesterday morning should feel that they have won one of the highest honors that the university bestows. The university extends its sincere congratulations to the society in its choice and to the new members in their election.

## That Study Commission

The majority of the university family has heard suggestions and rumors as to the purpose and the trend of investigation to be followed by the All-University Study Commission which President Frank appointed last year. No doubt a majority has pondered over the magnitude of the task confronting this commission, and likewise has wondered just what the findings and the suggestions of the Commission will be.

Nation-wide attention has been centered about the proposed Experimental College which is to be established in the College of Letters and Science in September of next fall. With characteristic tolerance and liberal-mindedness President Frank outlined the purpose and the future of the experiment when

the study commission was appointed, a copy of which is appearing in the Alumni Magazine. The President said in part:

"Obviously the commission that I am today appointing is not a legislative body, it cannot imply any infringement of the minimum necessary autonomy of the various colleges of the University. No one is under the delusion that you desired to create a sort of corporate academic Mussolini who would undertake to dictate the future educational policies of the University. However definite may be the proposals that grow out of its discussion, I conceive one of its major functions to be that of a sort of informal general staff for the suggestion and stimulation of a University-wide discussion of the fundamental problems that are today harassing the minds of those who have the future of higher education at heart."

"... We must contrive to effect a successful advance toward a more adequate correlation of modern knowledge and a more adequate comprehension of modern life."

The layman as well as the specialist has come to realize today that too much knowledge exists for any one mind to grasp. The sudden increase of knowledge in science and its allied fields has driven education from the former "laissez faire" elective system to the narrower system of prescribed curriculums mapped out by administrators. Of necessity the products of the present prescribed system have a narrower store of knowledge, they lack the breadth of imaginative inspiration which has been responsible for the advancement of science.

The handicaps of the curricular system as we study under it here were again impressed upon us by a few remarks made in the course of an address given Sunday evening by one of our leading professors of science at the Luther Memorial church. He outlined a program of study and contact which to us seems a near approach to an Utopia. We should not come here to do lessons; what we can term as study should be that work done outside and beyond the classroom text, the professor went on to say. Preparing one's lesson is essential, of course, but he advises that the lessons be done first, and then a visit be made to the library with its vast store of knowledge.

His outline is that of an almost ideal program, but sad to say, one which is quite a ways beyond the reach of most of us in our present academic life. We form a good sized community here, having in many cases institutions and facilities which goodly sized cities maintain—they all need our administrative attention. Lecturers, artists, and men who have attained leadership in their fields of thought come and offer their findings to us. We must spend considerable of our time separating the chaff from the wheat, we must use care in our judgment of their relative benefits.

Yet are we capable of planning our own scholastic voyage through undergraduate years? Hardly. Too much danger exists there for a promiscuous selection of unrelated subjects. Somewhere in between the two extremes lies the situation's solution, and somewhere along the line the Commission may unearth it. May they succeed.

## Reforming Reform

A student transfer from the University of Washington, in speaking to us the other day, told how Washington greatly excelled Wisconsin in unity of student body. He suggested that our university would be improved by adopting the western college's methods, such as breaking down the snobbish stand of the fraternities and sororities, exacting a semester payment from every student in order to pay for the Cardinal and put it in the hands of all, calling the men and women into various campus activities "so that football wouldn't be the only thing that brought forth student spirit," and putting all extra-curriculum endeavor under a single governing board "in such a way that student unity of action and work would be more socialistic and more purposive."

This sort of reform, we must admit, is very good; still it is necessary to remember that different colleges present differing situations, and though various reforms are efficacious in some universities, they might be of little benefit in others. For example, many of the ideas mentioned above, would be negations to the Wisconsin ideal of liberalism.

Exactng money from all students for the Cardinal might result in its loss of independence through outside control. Development of individualism would also be menaced by some of these reforms, for such is the fate of many institutions in smaller colleges where student unity in extra-curricular activity is regulated. Moreover, an all-powerful governing board, though admittedly successful in its place, would result in a Mussolini-like control at Wisconsin which would be intolerable.

We do want numerous reforms at Wisconsin, and we propose to work for them; but we are skeptical when we are told "how they do it" at such and such a school and why we should do the same thing. Perhaps the variety of architecture on the campus is quite indicative of the Wisconsin spirit of liberalism which liberalism we hope shall continue to be available to our students.



THE MENU at home Saturday will be: steak, french fried potatoes, and apple dumplings! And at least two dumplings!

THE FROSH who had heard "Home" used in a song with "Sweet," now has had his trunk packed for two weeks.

It IS wonderful how these alert freshmen minds can tell you how many hours, minutes and seconds it will be until they step off the train at Punkin Center, and then be able to make a mistake adding 2 and 3 in math.

## MERRY CHRISTMAS

BUT the man who will get the real greeting from the girl friends is the one with more material things than Presents of mind.

One fellow we know got a scarf for his girl. He expects she'll say "Shawl right!"

"TAINT the tree, it's papa who gets trimmed."

## HAPPY NEW YEAR!

BUT IT'S the MISOGYNIST who has the real presence of mind! He hasn't any girl!

PROFESSORS are so considerate giving their classes a quiz as a holiday reminder. The practice is, at least, questionable.

ALAS! ALACK! Two good things never do break together. Now when we have Mistletoe, the park bench is out of commission.

## MERRY CRISTMAS!

CHRISTMAS Comes, too, in foreign lands. The Dutch have had Christmas already. They put it on before prices go up, showing that the Channel really isn't so broad after all.

IN RUMANIA they are to have a Christmas Carol.

IN ITALY Benito isn't going to let them celebrate Christmas. He's afraid they would forget about Mussolini.

IN ONTARIO they got back light wines and beer. Fooled you! We're not mentioning the Christmas spirit.

Which gives us an idea that Ontario has the Rumania.

## HAPPY NEW YEAR!

CHRISTMAS CARDS are now being dispatched to all our friends. That includes various kinds of friends. Even the dean and professors.

SAY IT WITH A GREETING CARD! It's the sentiment that counts! Maybe so—but its the presents that count up.

SMALL BOY, looking at money: Gee, dis Chismus shoppin' sure does break into a dollar.

SOME SMART EDITOR will now please start a fund for the needy, underfed college student.

## MERRY CHRISTMAS!

WE cannot figure out how long it is until vacation starts as we do not know just when you read the Cardinal. The Cardinal is a morning paper for those who haven't 8 o'clocks.

SHADES OF 1890! The college boys are turning to chess again. Every time they win a game it makes them feel quite chesty.

WHICH reminds us: "Where'd you get these chessmen?" "In a pawn shop."

## HAPPY NEW YEAR!

Now we come to the event that comes the week after Christmas. 1927! Here's hoping it turns out better than the advance reputation it has on the Campus.

Most college students will see the new year in. Most of them will be up so late that they'll think they are in Madison.

THE TIMES IS WRONG The Cap Times said the only folks who'd stay here are the stragglers and those who are broke. We're broke. That's the reason we're going home.

Jonah said this was his last column this year. So is it ours, but it is his joke. He also wound up by saying "The season's greetings!" That also is his joke. Far be it from us to wind up our last line saying "Merry Christmas!"

PRINCE OF ORANGE

## Readers' Say-So

### A MOHTER ATTACKS FRATERNITY METHODS

Editor, the Daily Cardinal:  
I am a reader of the Daily Cardinal and do not think it would be amiss to mention this fact as long as there is a discussion on election to Phi Kappa Phi. Of course, after the explanation given in Tuesday's paper, one can readily see there is very little, if any partiality shown, which is a very fine standard to follow, but when parents pay taxes and have their money used for the education of children they certainly like to have them treated in an impartial way.

For instance, a boy entering the university pledges a fraternity. After he pledges, he finds that a list of girls is given him to select a partner for parties which this fraternity gives. Supposing this boy has a girl who is not on the list—he must slight her or not attend the party—two to one, he makes a selection from the list—the girl is hurt, and sometimes hurt deeply—is this a proper way for such organizations to carry on? You may say that is their affair, perhaps it is, but it is a very poor system to put into use, especially in a university where money is appropriated by the Legislature as it is here—a boy should be able to choose for himself—and show that he is not the jelly-fish type.

### A STUDENT MOTHER

### AN OPEN LETTER TO "RED" MILLER

Editor, the Daily Cardinal:  
On Dec. 18 of last year, Red, Wis-

consin, worked out with Marquette on the basketball floor. It was a great game (for Wisconsin; Badgers 42, Marquette 26); The Marquette student body was out en masse, and there were about 2000 Wisconsin adherents there, too. Spirit was high and feeling was intense; it always is, always has been and always will be whenever Wisconsin meets Marquette in any major sport. Marquette had their four cheer leaders on deck, and buh-leave me, Red, those guys earned their sleep that night.

It was a big evening—Wisconsin was "on," Marquette backed to the limit by almost all Milwaukee; the "S. R. O." sign was hung out long before the game began. Spirit, color, cheering; and Red, the only thing which kept that affair from being a really big-time intercollegiate game was the fact that the Wisconsin cheering was putrid; there was no Wisconsin cheer leader; there were four leading cheerers for our opponents. Now listen, Red, you grant me, I know, that organized cheering is one of the most colorful features of an athletic spectacle; and take it from me, Red, that night in the Milwaukee auditorium, every Badger present had plenty reason to, and actually did, get plenty warm behind the ears.

What am I driving at? Listen, Red, Marquette had their cheerleaders working overtime, leading one cheer after another—and one of those cheers was am ighty, roaring "locomotive Wisconsin." Now what were we doing meanwhile? Once in about ten minutes one section of the Wisconsin crowd would start a skyrocket, which sometimes would gather some power as it de-

(Continued on page nine)



## Bulletin Board

This column is for the use of all organizations and university staff members who wish to reach large groups readily. No charge is made for notices. Notices may be brought to the editorial office at 772 Langdon street, or phoned to Badger 250, before 5 o'clock of the day preceding publication.

### WOMEN'S BASKETBALL

Freshman and sophomore women will practice basketball at 7:30 o'clock tonight, juniors and seniors at 8:30 o'clock. Freshman and junior captains will be elected.

### CLEF CLUB

Clef club will not meet tonight, but the first meeting after vacation will be compulsory. Watch the Cardinal for further announcement.

### CHRISTMAS KID'S PARTY

Presbyterian students and their friends will hold their annual Christmas Kid's Party, at 7:30 o'clock tonight. Prizes will be awarded for the best girl's and best boy's costume. Admission charge will be 25 cents.

### COSTUME PARTY

A Costume party will be held at St. Francis house, 1015 University avenue, tomorrow evening for the benefit of the tea fund. Dancing from 8 to 11 o'clock. Admission, 25 cents.

### SPANISH CLUB MEETING

Spanish club will meet at 7:15 o'clock tonight at the Casa Cervantes, 225 N. Murray street. A Christmas party will be part of the meeting, for which everyone is requested to bring a 10 cent present and 10 cents.

### METHODIST PARTY

A Christmas party will be held

at the First Methodist Church at 7:30 o'clock Thursday evening, Dec. 16. All young people of the university age are invited. Bring a 10 cent present. A good time is assured.

### CHRISTIAN SCIENCE PARTY

There will be a meeting of the Christian Science society at 7:30 o'clock in room 35 Music hall.

### PRESS CLUB

The regular meeting of Press Club scheduled for tonight has been postponed until Jan. 13.

### Junior Math Club to Hold Season's Final Meet Today

The Junior Math club banquet will be held at 6:30 o'clock today at Witter's Tea Room. As the last gathering of the season, it is to be of a purely social nature. Dr. E. B. Van Vleck of the Mathematics department is to be the main speaker of the evening; the subject of his address will be "Knots."

Karl Jansky '27, will preside as toastmaster. Burtha Sersinger and Lester Earls, members of the class of '27, are also to speak at the banquet.

Banquet committee workers of the Junior Math club are Sylvia Fernholt '27, Harold Osterberg '27, Veryl Shult '27, and William Harding '28.

### ALPHA ZETA ELECTS SIX MEN TO MEMBERSHIP

The following men were initiated into Alpha Zeta, honorary agricultural fraternity, yesterday, Gerald Burgardt '28, Harold Cook '28, Dale Aebischer '28, Alphonse McGrath '27, George O'Brien '27, and Lawrence Weyker '28. Elections to Alpha Zeta are made once during each semester from the junior and senior classes in the College of Agriculture, and are based on scholarship, leadership, and character.

FAIR PRICES AND FRIENDLY SERVICE

## Good Books for Christmas

Long after Christmas has passed, you will be remembered with affection if your gift is a good book. Good books never wear out their welcome, but rather improve it upon long acquaintance. One of these good books will be an admirable solution for your gift problems—

### Carl Sandburg's ABRAHAM LINCOLN

2-volume set destined to become a permanent part of American literature.

### W. E. Woodward's GEORGE WASHINGTON

A biography which gives the true Washington, as well as a fine history of Washington's time.

### Jerome K. Jerome's MY LIFE AND TIMES

The distinguished author of "Three Men in a Boat," tells in a delightful, anecdotal style the story of his career.

### Emory Holloway's WHITMAN

An accurate picture of a great American by a pre-eminent Whitman scholar.

### Alvin Harlow's OLD TOWPATHS

The story of the picturesque canal boat era in American history, profusely illustrated.

### Clifford Ashley's THE YANKEE WHALER

One of the most beautiful of books, with many illustrations in color, and over a hundred black and white reproductions.

# Brown Book Shop

Established 1911 623 State Street  
"COME IN AND BROWSE"

BUY EVERYTHING POSSIBLE ON YOUR CO-OP NUMBER



## You Can Save One-Fifth on Your Suit or Overcoat By Buying Now!

Eight or ten or twelve dollars is not to be tossed out the window!

That's what the savings in this big pre-Christmas sale of suits and overcoats amount to.

You may choose from the entire Co-op stock of suits and coats, with nothing reserved except Tuxedos.

And they're all styled especially for Wisconsin men!

## The UNIVERSITY CO-OP

E. J. GRADY, Manager  
STATE at LAKE



## WORLD OF SOCIETY

### Representatives to Attend Conference in Milwaukee Dec. 28

A large group of students and other campus religious leaders will attend the National Student conference to be held in Milwaukee, Dec. 28 to Jan. 1, as representatives of the university.

One group will include: Miss Cordilla Brodnax, University Y. W. C. A. secretary; Mr. C. V. Hibbard, University Y. M. C. A. general secretary; Miss Alma Bridgman of the faculty who is serving this year as chairman of the Y. W. C. A. advisory board; the Rev. Robbins W. Barstow, pastor of the First Congregational church; and the Rev. C. Walter Smith, Baptist student pastor.

Representatives of the University Y. W. C. A.: Bernice Winchell '27, president; Eulalie Beffel '27, vice president; Charlotte Wollaeger '28, secretary; Lucile Dudgeon '27, chairman of student-industrial girls' group; June Deadman '28, vespers chairman; Janet Smith '30, Margaret Brodnax '30, Ruth Scandrett, grad, Olga Rios '28, Ethel Cruickshank, grad, Francoise Blein, grad, and Henriette Rayan '27.

Methodist student group: Ermina

### Social Notes

#### Phi Pi Phi.

A specialty dance, "The Gypsy Beggar" by Gloria Windsor, professional dancer at the Chicago South Shore Country club, will feature the Christmas formal to be given Friday night by members of Phi Pi Phi fraternity at the chapter house. Mr. and Mrs. Robert Nohr are to chaperon.

Blakely '29, Nellie Wilson '29, Ethel Trenary '30, Hazen Carpenter '30, and John Thomas '30.

St. Francis house: Jackson Bruce

L3.

Presbyterian house: Ethel Haskins '28, and David Williams '27.

Congregational Bradley club:

Robert Rasche '28, Allan Colburn '27, and Leeta Darling '28.

University Y. M. C. A.: John

Gilllin '27, president; Adamson

Hoebel '28, Richard Ela '28, Theodore Thelander '29, Alan Ruedt '30,

Truman Bloss '30, Harold Stark

'27, Franklin Orth '28, Paul Schuet-

te '29, Herman Kerst '30, Robert

Hilty '30, Heng Yao, grad, George

Sakamaki '27, Yoshinari Sajima

'27, Vladimir Rimsky-Korsakoff

'27, Karl Maltitz von Helmuth '30,

Robert Williamson '30, and Todor

Dobrovsky '29.

#### Delta Chi.

Delta Chi announces initiation of the following men: Alton T. Peterson '28, Hollandale; Ralph W. Leonardson '29, Marinette; and Daniel P. Boyle '29, Superior.

#### Sigma Banquet.

Sigma sorority held a formal banquet in celebration of its second anniversary last evening at the chapter house.

#### Prof. and Mrs. Sumner Entertain.

Prof. and Mrs. W. A. Sumner,

Eton Ridge, entertained the members of the Country Magazine staff at a Christmas party at their home last evening. Twenty-five guests were present.

#### Square and Compass.

Square and Compass fraternity is entertaining with a formal Christmas party at the chapter house Friday evening. Mr. and Mrs. Rufus Phillips will chaperon.

#### Nurses Dormitory.

Residents at the Nurses dormi-

tory, University avenue, will give a Christmas informal party at the dormitory Saturday evening. Miss Denne will chaperon.

#### Phi Kappa.

Members of Phi Kappa fraternity will give a dinner dance at their chapter house tomorrow evening. Christmas greens will decorate the home. Mr. and Mrs. Herbert Brockhausen will chaperon.

READ CARDINAL ADS

"Men! Buy Her Gift—Where She Would Buy It"

## FRED W. KRUSE CO.

205-07 State St.



Introducing Our Negligee Section--Main Floor

Remarkable Values

—IN—

Quilted Silk Robes

\$7.95 and \$10.95

A Lovely Accessory!

A Charming Gift!

Unexcelled styles and quality cut amply full—to our order. Tuxedo and coat collars.

Corduroy Robes - \$3.95 to \$19.50

Silk Negligees - \$7.95 to \$25.00

## Mangel's

NEW YORK WAIST HOUSE

27 So. Pinckney St., Madison, Wis.

## Silk Lingerie

A Xmas Specialty

\$3.98

Made to sell at 6.00

This three piece Dansette and dozens of other styles can be yours for amazingly little. How? We buy silks advantageously. We are one of the largest retailers of lingerie in the United States. We can sell at a small profit because 70 stores take our output. See for yourself and compare!





### Alumni Briefs

Ruth Steinman ex '27 and Robert Bean ex '27, Milwaukee, will be married Saturday, at the home of the bride's parents. They will leave Milwaukee Dec. 31 and spend their honeymoon in Australia. Bean, who was made director of the zoo at San Diego, Cal., last year, is representing the San Diego zoological society in Australia. Capt. Flowers, a member of the Australian parliament, has invited Bean to make the trip.

Sheldon E. Meyer L'26 is practicing law at Monroe, Wis.

Howard W. Roper '25, is working for his doctor's degree at Harvard.

Rodney Alder L'26 is completing his practice work in law in the office of W. A. Hurlburt, Omro, Wis. The engagement of Margaret Moore '23 and Horace Weller '25

was announced last Saturday in Fond du Lac. Since her graduation Miss Moore has been instructing in the Fond du Lac schools, and for the last few months has been engaged in social welfare work in Providence, Rhode Island, where Mr. Weller was practicing law.

Margaret Haberman '11 sailed in November to enter a new field of missionary work in South India. She has been in Japan under the auspices of a Methodist missionary society previous to this year.

Walter Heymann '14 is vice president of the First National bank of Chicago and chairman of the Board Liberty Trust and Savings bank.

#### Noland Son.

Prof. and Mrs. Lowell E. Noland, 1723 Summit avenue, announce the birth of a son, Wayland Evan, Dec. 8. Prof. Noland is in the zoology department.

#### Gilmore Daughter.

Mr. and Mrs. Eliot Gilmore, 2284 Fox avenue, announce the birth of a daughter, Grace Eleanor, at St. Mary's hospital Tuesday morning.

### APPROVE PLANS OF EXTENSION BLDG.

#### Milwaukee Branch Headquarters Drawn Up by Architects

Plans have been approved for the new Milwaukee building of the university extension division, according to a letter just received by Van Ryn and DeGelleke, Milwaukee architects, from C. A. Halbert, state chief engineer.

When this building is completed it is the plan of Chester D. Snell, dean of the extension division, to

make it the base from which members of the university staff will go out to conduct classes and to provide a larger program of university service in all the towns and cities of the newly-established Lake Shore district, which includes the counties of Milwaukee, Racine, Kenosha, Walworth, Jefferson, Waukesha, Dodge, Washington, Ozaukee, Green Lake, Fond du Lac, Sheboygan, Winnebago, Calumet, and Manitowoc.

The regents of the university and

the state chief engineer have authorized the architects to prepare building specifications upon which bids from contractors can be received at the office of J. D. Phillips, business manager of the university. Construction is to begin as soon as contracts can be let, and the building is expected to be completed in time for university extension classes in September, 1927.

READ CARDINAL ADS

## Masonic Temple Dance

Friday Night, Dec. 17

Flindt's Strand Theatre Orchestra

For Masons and De Molays  
Dancing from 9:30 to 12:30

Masonic Dance Committee  
A. C. Lindauer, Chairman

### Learn to Dance

LEO KEHL  
SCHOOL OF DANCING

Phone F. 561 Cameo Room  
"As Easy as Walking"



An Important New Ally of  
Good Grooming

**EVERSMART**  
MANICURE COMPACT

How did one manage before the Eversmart Manicure Compact arrived? It's as indispensable as a powder compact. Contains buffer, nail polish, nail white, manicure stick, file, and emery board—all in a three-inch cylinder. Comes in decorative designs in gold-filled, silver or lacquered finish.

\$2.50 upwards

**Rider's Pen Shop**  
REAL PEN SERVICE  
650 State St

**Wallop  
Your  
Thirst**

with the  
big surprise

A brand new drink with a brand new flavor—pure and healthful for the youngsters, brimful of zip and tang for everybody.

At all Soda Fountains

**JEFFY**  
**5¢ DRY**  
[The Snappy Drink]

BUY EVERYTHING POSSIBLE ON YOUR CO-OP NUMBER

## The Co-op Gift Shop Offers You A Multitude of UNUSUAL GIFTS

Today . . . tomorrow . . . and it's hop the special for home! Just two days in which to do your Christmas shopping, to choose gifts for Mother and Dad and the sisters and brothers.

You've been wondering what to give—the Co-op Gift Shop has the answer. Here are presents especially chosen for the people for whom it is especially difficult to choose gifts.

### For Mother or Sister DESK SETS

Here are desk sets extraordinary—so clever in design, so unique in appearance. A gift that will not only be appreciated on Christmas morning, but will be treasured and used every day of the year. Priced at from \$2.50 to \$12.50.



### Always Acceptable BOOK ENDS

Rare indeed is the person who will not welcome book ends for Christmas—especially if they are from this fine showing of leather and metal ends in novel and unique designs. \$2.50 to \$12.50.



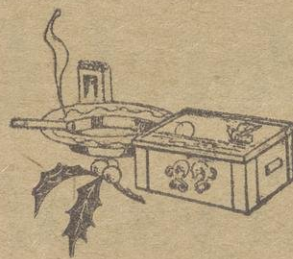
### Certain to Please is NOVELTY JEWELRY

Brooches, necklaces, earrings, in antique effects, set with beautiful color combinations. This is the jewelry most in vogue this season.

It is being worn by smartly dressed women everywhere, and Wisconsin co-eds were among the first to adopt the fashion.

Shown in many styles and combinations at prices ranging from \$1 to \$5.

### New Shapes and Designs in ASH TRAYS



These trays do more than keep ashes from the rugs—they add to the attractiveness of a room. Especially novel is a ship design in India brass wrought iron. Offered at many prices, from 50c up.

### Give the Roommate a WISCONSIN PLAQUE

A mighty fine gift—the university seal in metal mounted upon a shield. It's a thing that one might not buy for one's self, yet will certainly be happy to own. Priced at from \$2.50 up.

**The UNIVERSITY CO-OP**

E. J. GRADY, Manager

STATE at LAKE



## AGS AMASS PILE OF SHOW RIBBONS

University Animals Prominent  
in National Live Stock  
Expo

Half a bushel of ribbons have been added to the College of Agriculture collection and are now on display.

These ribbons were won by university animals displayed at the International Live Stock show held in Chicago from Nov. 27 to Dec. 4. The outstanding color is blue, with all the other colors of the spectrum represented.

In addition to the ribbons, cash prizes aggregating nearly \$1,000 were won by the animals owned and fitted by the university.

The sheep, under the care of Prof. Frank Kleinheinz, who is recognized as one of the best sheep men in this country, were the largest winners. In addition to ten firsts, seven seconds, two thirds, five fourths, and three fifths, the College of Agriculture had the champion Shropshire yearling wether.

Swine were very important winners. The championships, three firsts, four seconds, four thirds, three fourths, one sixth, one seventh, and one eighth were won by the porkers exhibited for the university by Prof. J. M. Fargo.

The horses won three firsts, one third, one fourth, one fifth, one sixth, and two seventh places. In the beef cattle one fourth place was won. Horses and cattle were in charge of Prof. J. G. Fuller.

The International Live Stock

## A. S. C. E. TO SEE SCENIC SLIDES AT LAST MEETING

Two hundred slides in natural colors entitled "A 10,000-Mile Round Trip of the Natural Scenery of the United States" by Selden Clark '28 will feature the last meeting of the year of the American Society of Engineers, to be held at 7:30 o'clock tonight in the Engineering auditorium. The Engineer quartet will sing the songs of St. Patrick. All civil engineering students and members of the engineering faculty have been invited to attend this meeting. Refreshments will be served after the program.

## FOUNDATION PLAYERS PICK POLLOCK'S "FOOL"

The Wesley Players will present their main production for the year at 8 o'clock tonight at the Wesley Foundation. "The Fool" by Channing Pollock has been chosen as the vehicle for this performance. The cast, which is composed of 15 university students, has been coached by Dave Lindstrom, grad, a member of Wisconsin Players. A limited number of seats will be

show is an exhibition which attracts stock raisers from all over the United States. Competition is very keen, and an animal which places is considered among the best in the country.

Dr. F. A. Niles  
Dentist

301 South Pinckney St.  
Phone Badger 2725

## SWISS PHYSICIST JOINS FACULTY

New Theories of Atomic Structure to be Presented Here

New theories of atomic structure will be brought to university students by Dr. Erwin Schrodinger of the University of Zurich, Switzerland, in a series of lectures during January.

Dr. Schrodinger's recent research has dealt largely with the theory of properties of matter and with the

available at the church. The price of admission is 50 cents.

## BURT'S POCKET CLASSICS

Full leather flexible binding.  
Durable lightweight paper.  
We carry every title.

90c

*Gatewood's*

The Students Book  
Exchange

quantum theory of atomic structure. His articles which have appeared during the past year in scientific periodicals have attracted wide attention and will soon be reprinted in book form.

In the recent articles Dr. Schrodinger develops a new point of view with respect to atomic structure, which promises to be of great importance. His lectures at the university will deal not only with his own theory but with other recent developments in the theory of atomic structure.

Dr. Schrodinger is an Austrian by birth. He received his early training and began his scientific career in the University of Vienna. He subsequently was professor at the University of Stuttgart, then at Breslau, and for the past four years has been professor of theoretical physics at the University of Zurich.

NEW GLARUS—Scarlet fever and pneumonia were fatal to Kathryn Ann, six-year-old daughter of Mr. and Mrs. Charles R. Tolleson.

## Students' Vacation Specials Special Reduced Rates

To Chicago—\$6.75 Round Trip  
Via

## Parlor Car Motor Coach

Through

Janesville, Beloit, Rockford, Elgin, Chicago  
Leave Madison Union Bus Station

Friday, Dec. 17—7:00 A. M.; 1:00 P. M.; 4:30 P. M.  
Saturday, Dec. 18—7:00 A. M.; 1:00 P. M.

Returning Leave Chicago, Congress Hotel  
Greyhound Station

January 3—7:45 A. M.; 1:45 P. M.; 4:30 P. M.

All Coaches Well Heated, Comfortable

## Royal Rapid Transit Co.

Information call B. 4110 or F. 3243

# Christmas Dance

at the

## Hotel Loraine Crystal Room

THURSDAY, DECEMBER 16

# JOE SHOER

and His Parkway Orchestra

Admission \$1

Dancing 9:30

Benefit of The Empty Stocking Club



You name the candy---choose  
the package---we'll see it's  
delivered Christmas morning

All that you need to do is to choose the package you wish to send and specify the Chocolate Shop candies to be included, or, if you wish, leave the selection to us.

We'll see that the package is delivered anywhere in the United States on Christmas

Eve or morning.

Giving Chocolate Shop candy takes all the grief out of Christmas shopping and makes it a very simple task. And more than that—you're giving an especially fine gift—one that is certain to be appreciated.

# The Chocolate Shop



## Readers' Say-So

(Continued from page four)  
veloped, but would more often fizzle out. One group gallantly started a "Locomotive Marquette" in response to Marsuette's courtesy and what happened?

Listen, Red, that locomotive petered out! And that was the crowning humiliation of the evening for all the fair minded Wisconsin students in the stands that night. I attended Marquette for a semester, Red; thank the lord I had sense enough to transfer out here. And even though I haven't a particle of use for Marquette, I had to feel mighty small at the whole affair. Only once did Wisconsin crash through—that was between halves, when Georgie Walsted acceded to the pleadings of the gang and went out and led a great locomotive.

Red, don't let that humiliation be repeated this year! A word from you will put a cheer leader on the job; two would be better, but in a pinch, one will do. At least one of your men (Wes Bliffel) lives in Milwaukee, and would. I am sure, be happy to carry out an assignment to be on duty there that night. Red, it means so much to the Milwaukee students at Wisconsin. Please?

ARBEE '29.

ROLALTON, Vt.—Stories of the abundance of bears in the wild Vermont hills are getting better as the season progresses. An automobilist on the Bethel highway says he had to stop to avoid colliding with a full grown bruin napping in the roadway.

COLLECTION OF ABORIGINAL RELICS  
ADORN ROOM OF ADAMS FROSH

Collection inside feature.

Lo! No longer are sorority girls the sole collectors of trophies. Lawrence Gichner, Adams hall, may not have a varied collection of fraternity pins and the like, but he has things equally destructive.

Above Gichner's desk hangs, like the fabled sword of Damascus, a spear that once was the property of an Igrot head hunter. Then your gaze wanders to something that looks like a canteen. But it is merely one of the things that helped to inspire Paul Whiteman—an Indian tom-tom.

The Apache, not he of the Paris demi-monde, but one from our native plains, is represented in Gichner's assortment. This fortunate

collector has two of the redman's miniature war clubs and some of his water bottles.

Gichner, who hails from Washington, D. C., has for a very individual hobby the collecting of curios, antiques, bronzes and brasses of the Indians and Philippines. The Filipinos chime in with a wicker work hat, three feet in diameter, and oh! marvel of taxidermy—a preserved tortoise.

Gichner is working his way through school and is willing to dispose of his various relics. How about announcing dinner on a tom-tom, flipping your ashes into a Filipino's sombrero, and hanging the new Christmas ties on a spear? Let Santa Claus come from the tropics this Yuletide.

Rogers Charms  
Musical Audience  
With Piano Solos

Scarcely a rustle stirred the silent group which came from the freezing cold out-of-doors to listen to the cozy, softly-lighted reading room in Lathrop hall to S. G. A. Rogers, instructor in French, play the piano late yesterday afternoon.

The manner in which the selections by Beethoven, Brahms, Debussy, and Chopin were played yesterday accentuated the campus appreciation of the depth of feeling and sincerity in Mr. Rogers' playing.

The recital was the seventh of a

series of afternoon programs presented under the auspices of the university committee on lectures and convocations. Another event to look forward to, judging from a recital last spring, is the program to be given by Prof. J. L. Gillin of the Romance Language department and Prof. Vasiliev on Jan. 12.

DR. R. M. HILGERT  
Dentist  
829 University Ave.  
Over Cardinal Pharmacy  
Phone F. 5344  
Madison, Wis.

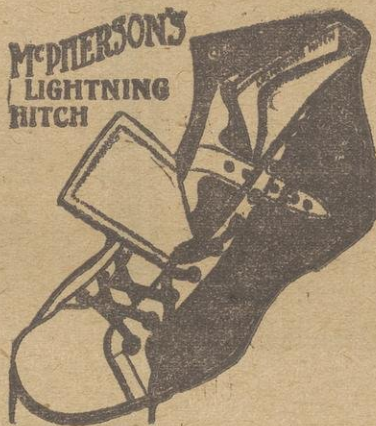


## Canadian Olympic Champions

Wore Ballard Skates

We carry in stock Ballard tube skates in combination with the celebrated Canadian McPherson Lightning Hitch Shoes—full nickel finish.

Men's Hockey  
Women's Hockey  
Men's Racers  
Women's Racers  
**\$8.95**



Professional Hockey, \$10.95

With Semi-Elliptic Runners



317 State Street  
Madison

ARGYLE—A petition signed by business men in every town on the Freeport-Dodgeville branch of the I. C. railroad will be presented to the state railroad commission at an early date. The petition asks for more passengers, express and mail service on the line during the winter months.

U of W Students  
HOME

for the HOLIDAYS

CHRISTMAS—NEW YEAR'S, 1926-27

## SPECIAL TRAIN SERVICE

Friday, December 17th

## To CHICAGO

Lv. Madison 1:05 p. m. 1:10 p. m. 5:00 p. m. 5:10 p. m.  
Parlor Cars only Coaches Parlor Cars Coaches  
Dining Cars Buffet-Lounge Car

## To MILWAUKEE

Lv. Madison 1:00 p. m. 1:05 p. m. 5:30 p. m.  
Parlor Cars only Coaches Parlor Cars  
Dining Cars Coaches

## To GREEN BAY and FOX RIVER VALLEY

Lv. Madison 5:00 p. m. Coaches, Observation-Parlor Car

To ELROY, ST. PAUL-MINNEAPOLIS, LA CROSSE,  
WINONA and MANKATO

Lv. Madison 1:00 p. m. Coaches

## To ST. PAUL-MINNEAPOLIS and DULUTH

Lv. Madison 9:28 p. m. Coaches, Sleeping Cars

## REGULAR SERVICE

## To CHICAGO

Lv. 4:35 a. m. 7:25 a. m. 10:40 a. m. 1:00 p. m.  
Ar. 8:35 a. m. 11:30 a. m. 4:35 p. m. 5:45 p. m.  
Lv. 2:15 p. m. 5:40 p. m. 5:40 p. m.  
Ar. 6:45 p. m. 10:05 p. m. 10:10 p. m.  
(a) Via Milwaukee (b) Via Allis

## To MILWAUKEE

Lv. 8:00 a. m. 1:00 p. m. 5:40 p. m.  
Ar. 10:30 a. m. 3:30 p. m. 8:10 p. m.

## To GREEN BAY and FOX RIVER VALLEY

Lv. 8:00 a. m. 1:00 p. m. 5:40 p. m.

## To ELROY and LA CROSSE

Lv. 1:00 p. m. 1:15 a. m.

## To ST. PAUL-MINNEAPOLIS, DULUTH and SUPERIOR

Lv. 7:30 a. m. 1:00 p. m. 9:28 p. m.

MAKE YOUR RESERVATIONS NOW

For information and full particulars, apply

A. F. KNIEBUSCH, Ticket Agent  
A. W. BOWER, Division Passenger Agent  
Telephone Badger 142-143

CHICAGO &amp; NORTH WESTERN RY.

(1457)

Before  
You Go--

add several of these new records to the  
Holiday list.

Don't Be Angry

It Made You Happy

Esther Walker

Sunday

Havin' Lots of Fun

Abe Lyman's Orchestra

What's the Use of Cryin'?

Pal of My Lonesome Hours

Lee Sims

Susie's Feller

Monterey

Isham Jones' Orchestra

Bunny Lyons' Music  
Shop

511 State St.



## STUDENTS PUBLISH WISCONSIN MAG

### Seminar Course Includes Putting Out Agricultural Periodical

The January issue of the Wisconsin magazine, a farm paper published in Madison, will be published by members of the seminar course in agricultural journalism. Thomas L. Cleary '26 is editing the issue.

This issue is to be devoted to the development of the country weekly in the state of Wisconsin. There will be several stories which are of especial interest to country editors.

The development of the ready print a Wisconsin invention, is traced. The inner pages of many of the smaller papers of the country now are made up of this ready print.

Another article tells of the "seeing Wisconsin first" program of the Wisconsin Press association, which every summer makes a trip to some part of the state. This practice was begun in 1850, at which time the trips were made by train, but automobiles are used at present. In this manner, all part of the state have been covered.

A special cover design has been worked out by Clarence Atwood '27. This is to consist of the different state papers superimposed upon each other.

The following students are contributing: Elenora Sense, grad; Josephine Heath '27; Ernest V. Kellogg, grad; Helen Kellogg '27; Van Renssaler Sill '28; Emil Jorgenson '27; Edward E. Price, grad; Clar-

ence N. Atwood '27; and Howard E. Jamison, grad.

Hardy Stieholm, a Wisconsin graduate, is permanent editor of the magazine.

### WIESE '26 ASSISTANT MANAGER OF McCALL'S

Otis Wiese '26, who has been traveling with the Publishers' syndicate since this graduation last spring, has just been appointed assistant manager of McCall's magazine, New York. He arrived from New York yesterday and he is visiting with his fraternity brothers at the Delta Chi house. He will leave for his home in Davenport, Ia., today, and will take up his duties in New York Jan. 3. Wiese was prominent in undergraduate life

### PLAYERS WILL PRESENT ONE-ACT DRAMA TONIGHT

"Hasheesh," a one-act drama, by Paul Faust '27, will be presented at an open performance by a group of Wisconsin Players at 8:15 o'clock this evening in Lathrop concert room. The play is open to the general public free of charge, and is the fourth of a series of dramatic hours sponsored by Players. Faust, the author of the play, is also directing it. The scene is laid in a morgue although the cadavers

at Wisconsin. During his junior year he was editor of the Badger and he was chairman of the first gridiron banquet sponsored by Sigma Delta Chi.

necessary for setting cannot be borrowed from Science hall.

### W. A. SUMNER TO ATTEND AG CONVENTION IN OHIO

W. A. Sumner, professor of agricultural journalism, at the College of Agriculture, will attend the annual convention of the American association of Teachers of Journalism. The meeting is to be held in Columbus, Ohio, from Dec. 29 to 31.

### Local Men Organize To Lumber In Mississippi

The Mississippi Lumber and Manufacturing Co. was incorporated here recently by three well known Madison men to enable them to do a lumber and manufacturing business in Mississippi. E. J. Young is president of the new corporation; Fred B. Gleave, secretary and treasurer, and Frank J. Hallauer, vice president. The articles of incorporation call for 5,000 shares

We will pack your "Christmas Candy" or "Cigars" for shipment—free of charge.

For your selection—a choice assortment of fresh chocolates, 1 to 5 pounds.

WHITMAN'S

PARK & TILFORD

JOHNSON'S

WEBER'S

ROMANCE

WE DELIVER

Let us send your package for you

**The Avenue Pharmacy**

ED. RENNEBOHM, Prop.

University Ave. at Lake

B. 4858

# SPECIAL SALE

ON TRUNKS, SUIT CASES, TRAVELING BAGS AND BRIEF CASES.

GENUINE LEATHER BRIEF CASES, SIZE 16, THREE POCKETS, STRAPS ALL AROUND — OUR PRICE \$3.50.

TRAVELING BAGS, OVERNITE BAGS, AND LADIES' HAT BOXES — OUR PRICE \$4.50 AND UP.

GENUINE LEATHER

GOOD GRADE WARDROBE TRUNKS, REGULAR SIZE. A FEW LEFT. VERY SPECIAL, \$35.00 VALUE \$27.50.

ARMY LOCKER TRUNKS, AN EIGHT DOLLAR VALUE, SIZE 31. OUR PRICE \$6.50.

COME IN AND CONVINCE YOURSELF. TRY AND MATCH OUR PRICES.

## Square Loan Shop

435 State St.

Open Evenings

## Home for the Holidays

**Complete Service Everywhere**  
The "Milwaukee" has arranged for Special Trains and through Standard Sleeping Cars, Parlor Cars, Dining Cars and Coaches.

**SATURDAY, DECEMBER 18th**

LEAVE MADISON

LEAVE MADISON

For

For

Milwaukee.....12:45 P. M.	Omaha.....4:30 P. M.
Wauwatosa.....12:45 P. M.	Kansas City.....4:30 P. M.
Chicago.....12:55 P. M.	St. Louis.....4:30 P. M.
St. Paul.....1:15 P. M.	Des Moines.....4:30 P. M.
Minneapolis.....1:15 P. M.	Davenport.....4:30 P. M.
Wisconsin Rapids.....1:05 P. M.	Janesville.....4:30 P. M.
La Crosse.....1:05 P. M.	Beloit.....4:30 P. M.
Wausau.....1:05 P. M.	Sioux Falls.....10:00 P. M.
Merrill.....1:05 P. M.	Mason City.....10:00 P. M.
Tomahawk.....1:05 P. M.	Emmetsburg.....10:00 P. M.
La Crosse.....10:00 P. M.	Charles City.....10:00 P. M.
St. Paul.....10:00 P. M.	Austin.....10:00 P. M.
Minneapolis.....10:00 P. M.	Northfield.....10:00 P. M.
LeRoy.....10:00 P. M.	
Owatonna.....10:00 P. M.	

Fast non-stop special to Chicago will leave Madison 1:30 p. m. Friday, December 17th

Reservations, tickets and further particulars

"Milwaukee" Station

Phones Badger 6299-6300-6301

A. B. Batty, Passenger and Ticket Agent  
Madison

**Chicago Milwaukee & St. Paul Railway**  
TO PUGET SOUND - ELECTRIFIED

## Benefits

you've never had before!  
with this new-type mouth wash

Advised by  
10,000 dentists  
and physicians

Here's a new experience for you! A mouth wash that gives you a new sensation, new benefits.

It is a new formula—utterly unlike any other mouth wash. Char-Tex! 10,000 dentists and physicians are using Char-Tex in their daily practice, urging its regular use for their patients.

The secret of the remarkable action of Char-Tex is this:

Char-Tex stimulates gum and mouth tissues. It gives them the exercise of which this age of soft foods has deprived them.

It does not shrink the gums and contract the blood vessels as astringent mouth washes do. It expands them—stimulates the flow of healthful blood with its white corpuscles that attack enemy bacteria.

Of course it sweetens

Of course Char-Tex sweetens, deodorizes the mouth. All good mouth washes do. But it does so much more than that.

It keeps the mouth literally in the pink of condition, by stimulating the health streams to normal action.



And Char-Tex is a thorough germicide—destroys disease germs. Yet it is perfectly harmless—you can swallow it!

No longer do you need fear Pyorrhea or mouth discomforts. Char-Tex as a regular part of your toilette and guards against all infections—sore throat, smoker's throat, tonsillitis, colds, etc. Use it as a gargle regularly and prevent these distressing ailments!

Try it for a week

Try Char-Tex for just a week, as a mouth wash and gargle. Your mouth and throat will have a new feel of cleanliness. So refreshed, so sweet, so clean! You'll never again do without Char-Tex.

It's so simple to use! Get a bottle today at any drug store or drug department, 50c and \$1. If you aren't more than satisfied, the price will be refunded.

# Char-Tex





## Fascist Arm of Mussolini Felt on Radio

### Intercedes For Schipa And Dictator Himself Sends Message

CHICAGO — The Fascist arm of Benito Mussolini reached into Chicago last night to break, temporarily, some thirty contracts which forbid Tito Schipa's singing over radio.

Schipa, Italian tenor of the Chicago Civic Opera Co., was sought by station WGN of the Chicago Tribune to take part in a program featured by the broadcasting of a message by Mussolini himself. The Schipa contracts, however, contain clauses against his appearing before a microphone.

Word of the difficulty reached Mussolini, a close friend of the singer. The Italian government then prevailed upon the American directors to lift the radio ban for this single occasion.

Besides Sig Schipa, Premier Mussolini had an all-star supporting cast for his radio debut in America. Three other stars of the Chicago Opera company took part in the program: Rosa Raisa, Giocomo Rimini and Virgilio Lazzari. Fascist melodies also were played by an orchestra.

It was the first time Mussolini's voice ever had been heard in Amer-

ica. Mussolini appeared before the recording microphone in riding habit. He stood close to the instrument and spoke in a conversational tone.

The message radiocast last night was in Italian but an English translation also was given. It expressed the opinion that America and Italy have built an "indissoluble relation of cordiality, friendship and collaboration which will cause them to travel a long road together."

### 1926 Building Cost Has Already Beat 1925 Mark

The total volume of construction contracts let in the state of Wisconsin during the first 11 months of 1926 amounted to \$105,653,700, according to the H. W. Dodge corporation. The 1926 11 months' total of contract awards has already exceeded the 1925 yearly total by 10 per cent. There was also an increase of 16 per cent over the figure for the corresponding 11 months of 1925.

New building and engineering work started in Wisconsin during November amounted to \$10,349,600. This was the highest November figure on record, being 82 per cent in excess of November, 1925. The above figure also exceeded October of this year by 12 per cent.

Included in November's construction record for the state were the following important classes of work: \$3,338,500, or 32 per cent of all construction, for residential buildings; \$2,300,000, or 22 per cent, for educational buildings; \$1,-

## Classified Advertising IN THE CARDINAL Reaches Every Student

### LOST AND FOUND

LOST—Shell rimmed glasses on or near campus. Call Margaret Alsop. F. 1595. Reward. 2x16

LOST—Small brown coin purse with about \$8 Sunday afternoon. Call B. 249. Reward. 2x15

LOST—Glasses in blue case Wednesday. Please call F. 3980. 3x14

LOST: Glasses in blue case Wednesday. Please call F. 3980. 3x14

### FOR RENT

FOR RENT—\$4.50 single, \$6.50 double. 2110 West Lawn. Call B. 2856. 2x16

FOR RENT—One double and one single room for girls next semester. 421 N. Lake. 2x15

985,900, or 19 per cent for commercial buildings; \$1,425,000, or 14 per cent, for social and recreational projects; \$403,000, or 4 per cent, for public works and utilities; \$376,600, or 4 per cent, for industrial buildings; and \$225,000, or 2 per cent, for religious and memorial buildings.

READ CARDINAL ADS

FOR RENT—Men. Single front room Varsity Apts. F. 4807. 12x6

GIRLS—Second semester, large double room with 3 windows and two closets adjoining bath; steam heated, near campus. Price very reasonable. 711 W. Johnson. 3x15

FOR RENT—Men. Single front room Varsity Apts. F. 4807. 12x6

### WANTED

WANTED—Cook wishes position in fraternity or sorority. Call F. 4185. 3x15

### SERVICE

SERVICE — Solid comfort for sleigh rides. Call F. 2934 or B. 3836. 6x8

SERVICE — Solid comfort for sleigh rides. Call F. 2934 or B. 3836. 6x8

### FOR SALE

FOR SALE—1 Study table, \$3.50, 1 typewriter stand \$2.00, both—\$5. Badger 3437. 1x16

FOR SALE—Save car fare Christmas. Ford coupe. Excellent condition, good tires, heater, \$90. Phone B. 2425. 3x15



## Convenient Fast Through Service To Milwaukee

Now only three hours. Parlor Motor Coach to Watertown. Direct "door to door" connection with the supremely comfortable and most modern "Rapid Transit" train of the Milwaukee Electric Lines.

LEAVING MADISON  
8:20 A. M. \*11:00 A. M. 3:20 P. M. 6:20 P. M.  
\*Stops 22 minutes for lunch at Watertown and does not operate on Sundays

No delay—no confusion. Your hand baggage is transferred—it goes right with you.

You arrive in the very heart of Milwaukee's downtown hotel and shopping district.

The Same Convenient and Fast  
Trip Returning to Madison

Wisconsin Motor Bus Lines  
The Milwaukee Electric Railway & Light Co.

N-142

## For Quick Results Use Cardinal Advertising

No matter what kind of a classified ad it is, it will bring you a quick response if you use the Daily Cardinal. If you have lost anything, have any thing to rent or sell, stop in at the business office, 772 Langdon, leave your ad, and the next day get your results. And the rate is very low, 2c per word for each insertion, minimum charge of 25c.

### These Ads Brought Results

WILL PERSON who took sand colored "Portis" hat from 4th floor Sterling hall Wednesday, Oct. 13, kindly return same.

This hat was recovered the day that the ad appeared.

WANETED—Two double and two single rooms to rent Nov. 13. Phone B. 6606.

Before 10 o'clock in the morning that the ad appeared, three phone calls brought the desired result.

## Use Cardinal Advertising The Daily Cardinal

## STRAND

CONTINUOUS 1 TO 11

### NOW SHOWING

Triple Feature Program  
RALPH GRAVES

and

RENEE ADOREE

—in—

BLARNEY

HAL ROACH Presents

MABEL NORMAND

"RAGGEDY ROSE"

With JIMMIE FINLAYSON

ON THE STAGE

Flindt's Strand Theater Orchestra  
"11 KINGS OF SYNCOPATED HARMONY"

TONIGHT AT 9 O'CLOCK  
ANNUAL PEP SHOW

Arranged for

U. OF WIS. FOOTBALL SQUAD

10—BIG ACTS—10

Pretty Girls—Lots of Noise

ALL SEATS 50c



## MEIKLEJOHN TALKS AT STUDENT CONVO

### University Professor Addresses Federation on Liberal Education

A delegation of 300 members made up of responsible student government officers, student newspaper editors, and other campus leaders from 160 colleges gathered into the Michigan Union building at Ann Arbor Dec. 3, 1926, for the second annual congress of the National Student Federation to discuss "The Student's Part in Education." Prof. Alexander Meiklejohn of the philosophy department, gave what, in the opinion of the New Student Intercollegiate news service, was the most important speech of the congress. His subject was "Can the Average Young American Be Liberally Educated?"

That the colleges are not places of understanding is the opinion of

Dr. Meiklejohn.

"Their prize exhibit is the alumnus. His attitude toward the college is that it's a place of sentimental loyalty and comradeship contact and friendship and other immediate necessities."

Dr. Meiklejohn also declared that most colleges fail because they are in America, and there is a lack of interest and education in the home. He said there was one thing with which to work and that was that America had great faith in education and believes in "culture or bust."

"Teachers have been taught technical scholarship and not liberal understanding. Colleges should be communities of learning, where in the teachers are primarily students themselves and the students apprentices to them."

It was even proposed by Dr. Meiklejohn that in order to get a community of interests, the elective system could be done away with and everybody should study the same thing in order to have common ground.

Other talks were made by Dr. Stephen Dugger, director of the

Institute of International Education and "Godfather" of the federation; President H. L. MacCracken, Vassar; President C. C. Little, Michigan; Alfred H. Lloyd, dean of the Michigan graduate school; and Thomas Cavanaugh, president of the Michigan student council, whose address of welcome was answered by Lewis Fox, Princeton, past president of the federation.

The committee on athletics, led by M. A. Cheek, 1924 Harvard football team, and Albert Dashiell, Scribner's magazine, commended that varsity coaches be paid no higher salaries than full professors of the faculty. They also decided that post-seasonal football games when promoted by commercial interest were harmful, that every athlete be pledged not to accept professional offers till his college class has graduated, and that alumni influence is objectionable.

The committee on curriculum discussed the encouragement of intellectual curiosity as a problem and favored Dr. Meiklejohn's views.

The teaching and teachers' committee recommended that at each

## VARIOUS LIBRARIES HERE ON CAMPUS

### Collections of Reading Matter Located in Many University Building

Beside the general library, there are several large branch libraries on the campus.

All the books and periodicals on agriculture and some on home economics are in the Agricultural library in Agricultural hall.

The Engineering library has the books and periodicals on engineering subjects, though some related subjects, as geology and chemical engineering are in the general library.

Most of the books and periodicals on botany and zoology and related subjects are in the Biology library,

college an undergraduate study be made of Oxford's tutorial system with view to possible adoption.

room 411 Zoology building.

The Chemistry library, in the Chemistry building, has most of the books and periodicals on chemistry.

The State hospital has a large Medical library. It receives the current numbers of medical periodicals, bound volumes of which are in the general library. It has, in addition, a large working library of medical and surgical texts—part of which are duplicated in the general library.

There are also, scattered about the campus, various small collections as aids to smaller departments.

The catalogue in the general library lists all the books owned by the university except those in the Law library.

When a book is permanently located in a department or branch library, the cards in the catalogue will be stamped Agricultural library, biology department, etc.

ALBANY—Silas Loveland, aged about 70, Brodhead, is suffering from a broken left knee cap, the result of an automobile accident Saturday



# STOP

## All on the Bargain Block

Splendid Savings on Young Men's

### SUITS

\$35 and \$40 Values

**\$29<sup>75</sup>**

\$47.50 and \$57.50 Values

**\$39<sup>75</sup>**

These suits, too, are tailored exactly to our style specifications, which are evolved after a survey of suits worn by the best dressed men of Mid-Western schools. They're wonderful values.

\$1.75 Medium Weight Underwear

**\$1.19**

Regular \$1 Burson Hose

**79c**

Box of 3—\$2.25

\$3 Flannel Shirts

**\$1.95**

Collar Attached Shirts

**95c**

\$1.25 Silk and Wool

Hose

**79c**

Prices Are Slashed on Our Long University Style, 1927 Model

### OVERCOATS

Values to \$35

**\$24<sup>75</sup>**

Values to \$60

**\$44<sup>75</sup>**

Wear a new coat home Christmas. Choose it today at these astoundingly low prices. Here are coats tailored especially for Wisconsin men—long, single and double breasted in blacks, blues, and greys.

\$3.50 Broadcloth Pajamas

**\$2.55**

70c Gym Towels

**59c**

# THE TOGGERY SHOP

—MAX KAPLAN—

University Avenue at Orchard

All Gloves Discounted

**20%**

Regular \$5 Hats

**\$3.79**