



LIBRARIES

UNIVERSITY OF WISCONSIN-MADISON

The 1952 meletean. Vol. 41 1952

[River Falls, Wis]: [Wisconsin State University, River Falls], 1952

<https://digital.library.wisc.edu/1711.dl/23FQSF6EQ7IJF8P>

This material may be protected by copyright law (e.g., Title 17, US Code).

For information on re-use, see

<http://digital.library.wisc.edu/1711.dl/Copyright>

The libraries provide public access to a wide range of material, including online exhibits, digitized collections, archival finding aids, our catalog, online articles, and a growing range of materials in many media.

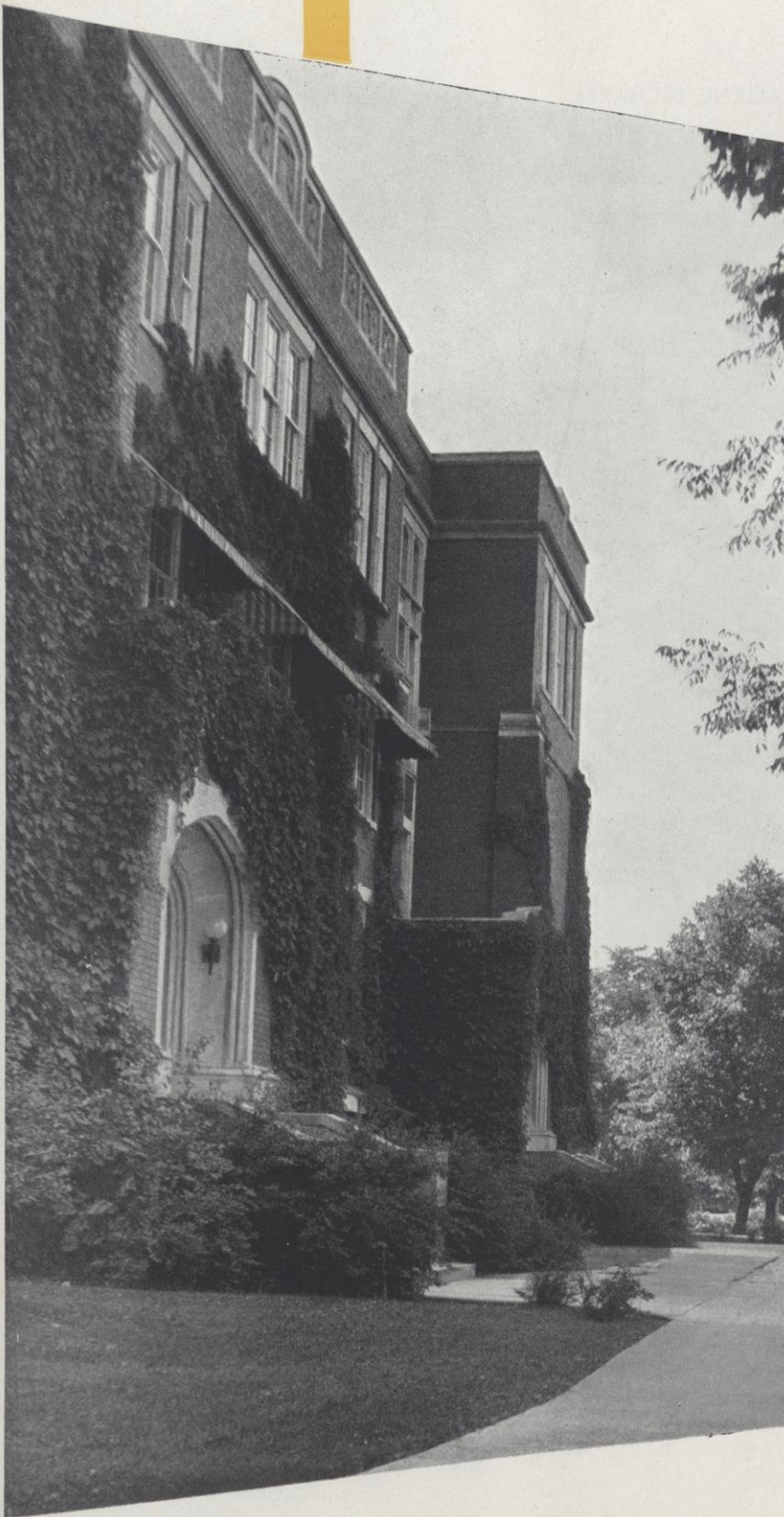
When possible, we provide rights information in catalog records, finding aids, and other metadata that accompanies collections or items. However, it is always the user's obligation to evaluate copyright and rights issues in light of their own use.

THE
Meletean



'52

Master



The 1952 MELETEAN

*Wisconsin State
College*

River Falls, Wisconsin
Volume 41



STAFF

EDITOR ARLENE PECHACEK
 ASSOCIATE LeROY STERN
 BUSINESS MANAGER JOHN REQUE
 ARTIST PAUL WILLINK



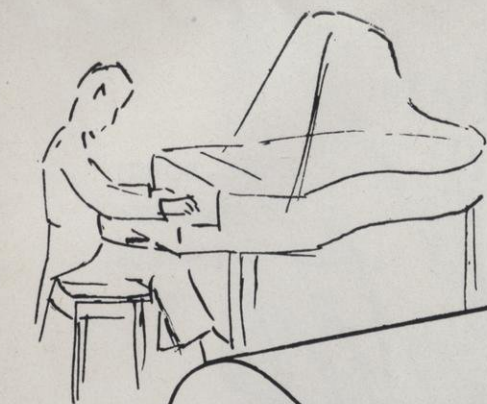
NORTH HALL

THE

MELETEAN

1952





State of Wisconsin

The Board of Regents of Normal Schools
On the nomination of the faculty of the State College at
River Falls
has conferred upon

Harold J. Smith
Bachelor of Arts

with all the rights belonging to this
degree. In witness whereof this diploma is granted
bearing the seal of the board and the signatures of its officers.
Harold J. Smith
Secretary

Offered for the first time this year at River Falls State College is the Bachelor of Arts degree, which was authorized by the state legislature in 1949 and the board of regents in 1951 to accommodate students who do not have an interest in teaching. The program is designed to give a liberal foundation for modern living, for further specialization in graduate schools, or to prepare the graduate to go directly into the field of work he has chosen.



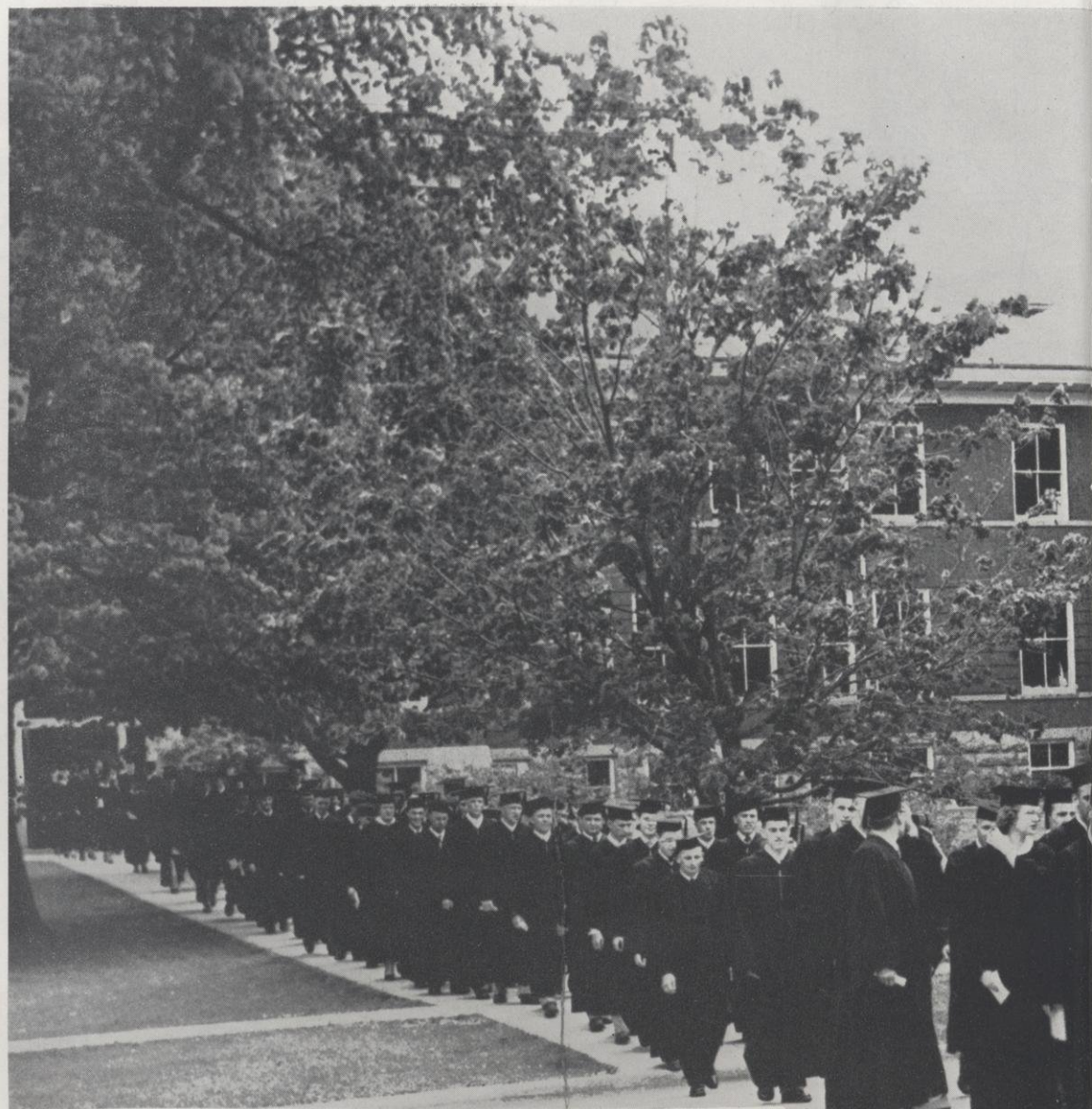
State of Wisconsin

The Board of Regents of Normal Schools
On the nomination of the faculty of State Colleges located at
River Falls
has conferred upon

Mary Jane Doe
Bachelor of Science

with all the rights belonging to this
degree. In witness whereof this diploma is granted with
the seal and the signatures of its officers this day a
Harold J. Smith
Secretary

The Bachelor of Science degree is granted to graduates who complete the four year course in professional education. The courses of study leading to the degree are planned to provide for every graduate a background of general education, specialized preparation in one or more academic fields, and professional training and clinical experience in teaching.

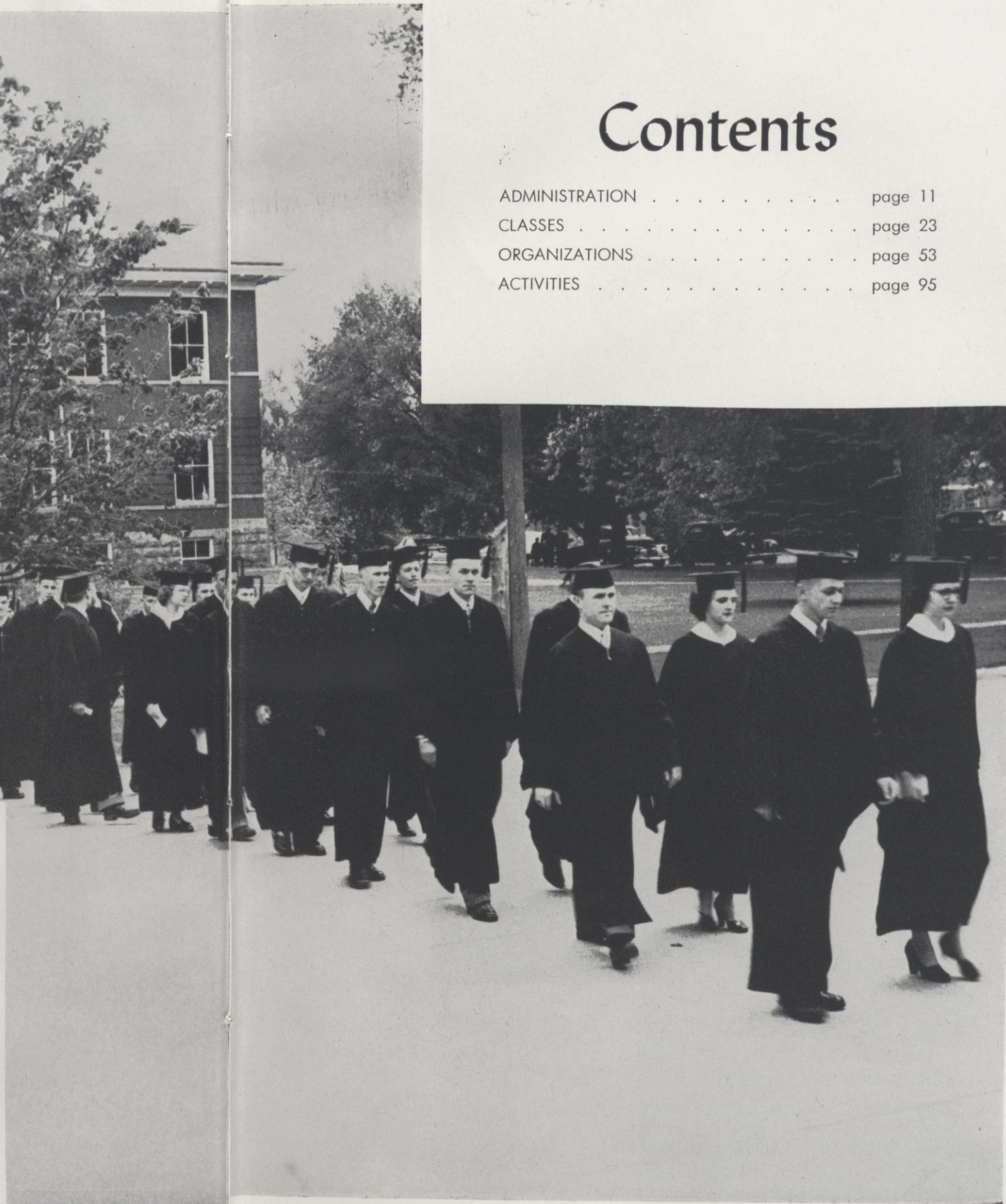


Foreword

In this forty-first volume of the Meletean, our purpose has not been to present in a new way the history of 1951-1952, but rather to leave you a record of what has happened at Wisconsin State College at River Falls in as vivid a form as possible. If it gives you an accurate reminder of this year's events then it has fulfilled its purpose.

Contents

ADMINISTRATION	page 11
CLASSES	page 23
ORGANIZATIONS	page 53
ACTIVITIES	page 95





DEDICATION

DR. CARLETON C. AMES

It is to Dr. Carleton C. Ames, a true friend, a true scholar, and a capable yearbook adviser, that we dedicate this, the MELETEAN of Nineteen hundred and fifty-two.

In Memoriam

The college and community were shocked on Tuesday, the twenty-ninth of May, 1951 by the sudden death of Berger Kolberg. Mr. Kolberg attended River Falls State College and was graduated in 1935. He did postgraduate work at the University of Oregon, the University of Minnesota and the University of Wisconsin. After teaching chemistry at the River Falls High School for four years he accepted a position as line coach and chemistry teacher at River Falls State College in 1943. He will be remembered by all who knew him as an able teacher and coach and a responsible citizen of the community.

BERGER KOLBERG

"So he passed over, and all the trumpets sounded for him on the other side."

THE PILGRIM'S PROGRESS
JOHN BUNYAN





Administration



DR. CHALMER DAVEE
Regent

BOARD OF REGENTS

Harold G. Anderson, President
George Watson, ex-officio
Roy C. Davidson
Mrs. R. C. Eby
Wilson S. Delzell
Elton S. Karrmann
Mrs. Doris D. Marks
Dr. Chalmer Davee
W. D. McIntyre
Frank W. Radford
Dr. George N. Sundquist
Eugene McPhee

Whitewater
Madison
La Crosse
Madison
Stevens Point
Platteville
Milwaukee
River Falls
Eau Claire
Oshkosh
Superior
Secretary



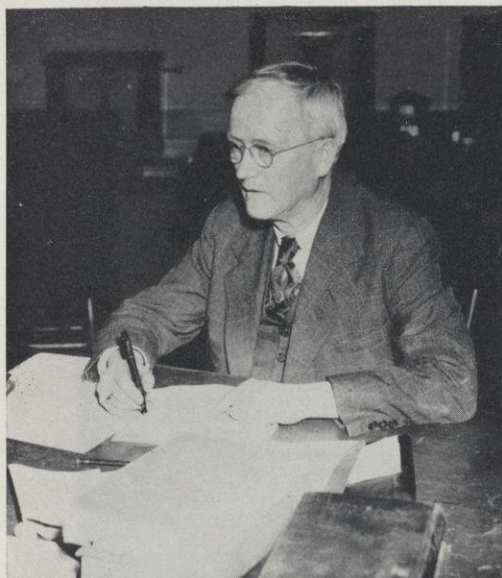
DR. E. H. KLEINPELL

THE PRESIDENT

This issue of the Meletean, the first under the new name the Wisconsin State College at River Falls, reviews the high lights of another significant year in the history of the College. The physical plant has been enlarged. Hathorn Hall, the first dormitory to be constructed on the campus, is completed. By mid-summer work on the new \$750,000 library should be well underway. A physical education and health building, a student union and a new campus school are all a part of the plans for the immediate future.

The current year has also witnessed an expansion of the academic program. New majors and minors have been organized. The Arts degree has broadened the offerings of the College. Older established programs have been strengthened.

As the following pages portray, the student body continues to uphold campus traditions and to maintain the academic stature that has characterized River Falls for many decades. Alumni and friends of the College can well be proud of their success.



DR. R. A. KARGES
Vice-President



MR. E. J. PRUCHA
Registrar

MISS MILDRED MITCHELL
Dean of Women

MR. B. J. ROZEHNAL
Dean of Men



MR. JOHN M. MAY
Director
Division of Agriculture



DR. L. G. STONE
Chairman
Professional Division



Faculty

VIRGINIA AKINS
Biology

EARL G. ALBERT
Physics



CARLETON C. AMES
History

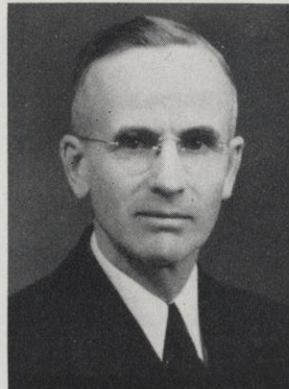
PHILIP S. ANDERSON
Psychology
Education

CONSTANTIN APSOURI
Geology
Geography

ADELE BLOOM
Economics

CLYDE B. CAMPBELL
Teacher Training
Agriculture

FRANCIS P. CHISHOLM
English



Faculty

BLANCHE DAVIS

Speech

CARRIE DORSEY

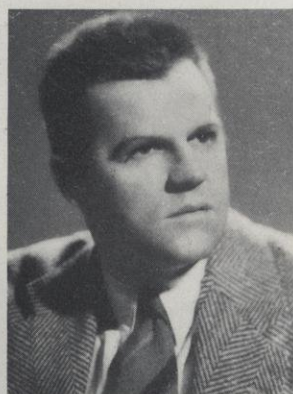
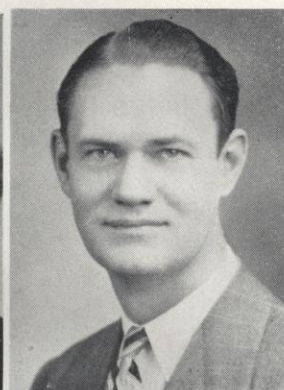
Education

ANN DUBBE

Education

WALTER ENGLER

English



CORA FARRELL

College Nurse

ROBERT FISLER

Education



RAY L. GARNETT

Education

WILFRED C. HARRIS

Education

Faculty

MARION HAWKINS

English
Debate

JOSEPH T. HOY

Physical Education
Director of Athletics

NICHOLAS JADINAK

Instrumental Music

ARTHUR N. JOHNSON

Agriculture

RUSSELL JOHNSTON

Education

GLENN P. JUNKMAN

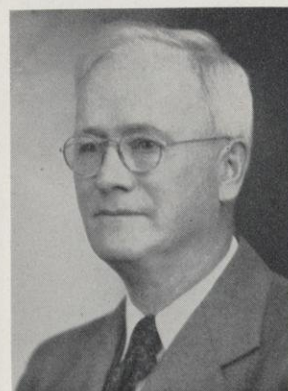
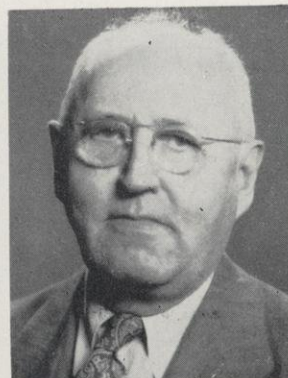
Mathematics

ERNST JURGENS

German
French

RUDOLPH A. KARGES

Chemistry



Faculty

BENJAMIN KETTELKAMP

Zoology

CHAUNCEY B. KING

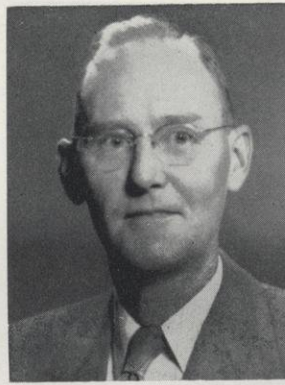
Vocal Music

ROBERT KLINE

Education

OPAL A. KNOX

Education



LOUIS KOLLMEYER

Art

CATHARINE LIENEMAN

Biology



BERNARD McCARTHY

Social Science

JAMES J. McLAUGHLIN

Mathematics

Faculty



MARILYN MARKEL
Physical Education



JOHN M. MAY
Agriculture



MILDRED MITCHELL
Dean of Women



JOHN G. MOSHER, JR.
Geography

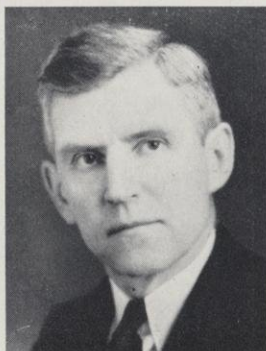
VERA MOSS
English

ADELINE PATTON
Education



EDWARD J. PRUCHA
Registrar
Agriculture

B. J. ROZEHNAL
Dean of Men
Instrumental Music



Faculty

THEODORE SETTERQUIST

Chemistry

PHYLLIS SIMON

Education

L. GORDON STONE

Psychology
Education

THORVALD E. THORESON

Agriculture



MELVIN WALL

Agriculture

ZELMA WHITTENBERG

Education



M. WAYNE WOLFE

Journalism
Spanish

WALKER D. WYMAN

History



Faculty

CARA WHARTON

Piano
Organ

MARY BRADLEY

Assistant Librarian



AMY FULLER

Assistant Librarian

RHEA GIBSON

Librarian

OFFICE STAFF



DAVISON AND WEST

OFFICE STAFF

Hjordis Anderson Deans' Secretary
 Alice Davison Administrative Typist
 Naomi Hartmann Registrar's Secretary
 Ann Kolberg Registrar's Secretary
 Esther Murphy Secretary, Training School
 Rosemary Nehmer Secretary, Registrar's office
 Stenographer, Veteran's Administration
 Leona O'Connor Stenographer
 Maureen Wallin Stenographer
 Ethel West Administrative Assistant



MURPHY



WALLIN



ANDERSON



O'CONNOR



KOLBERG
 NEHMER
 HARTMANN

Senior Class

GORDON ANDERSON
B. S. Economics, University of
California, Berkeley, 1954
Presently in the U.S. Navy, at
Naval Air Station, Alameda, California

JOHN ANDERSON
B. S. Physics, University of
California, Berkeley, 1954
Presently in the U.S. Navy, at
Naval Air Station, Alameda, California

MARGARET ANDERSON
B. S. English, University of
California, Berkeley, 1954
Presently in the U.S. Navy, at
Naval Air Station, Alameda, California

HOWARD ARNSTON
B. S. Economics, University of
California, Berkeley, 1954
Presently in the U.S. Navy, at
Naval Air Station, Alameda, California

ROBERT BARTON
B. S. Economics, University of
California, Berkeley, 1954
Presently in the U.S. Navy, at
Naval Air Station, Alameda, California

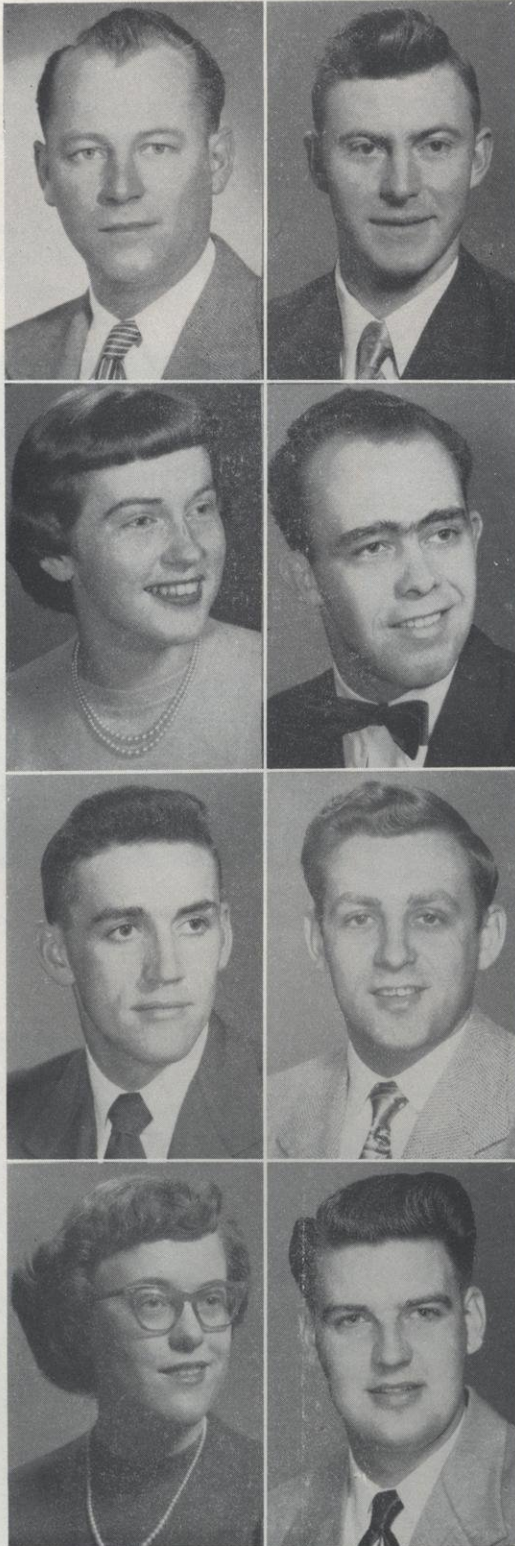
JOHN BROWN
B. S. Economics, University of
California, Berkeley, 1954
Presently in the U.S. Navy, at
Naval Air Station, Alameda, California

MARGARET CLARK
B. S. Economics, University of
California, Berkeley, 1954
Presently in the U.S. Navy, at
Naval Air Station, Alameda, California

ROBERT CARSON
B. S. Economics, University of
California, Berkeley, 1954
Presently in the U.S. Navy, at
Naval Air Station, Alameda, California

Classes

Senior Class



GORDON ANDERSON

Blair

B. S. Agriculture Education, Science
FFA 2, 3, 4; Student Veterans Association 4,
Who's Who in American Colleges and Univer-
sities 4; Choir 2; "A Dumb Waiter" 4; Home-
coming Committee 4.

JOSEPH ANDERSON

Pepin

B. S. Physics, Mathematics, English
Honor Society 2, 3, 4; Mathematics Club 2, 3,
4, President 4; YMCA 1, 2, 3; Glee Club
Intramural Sports 2, 3, 4; Who's Who in Ameri-
can Colleges and Universities 4.

MARGARET ANDERSON

Osceola

B. S. English, Speech, History
YWCA 1, 2; Masquers 1, 2, 3, 4, Vice-president
4; Alpha Psi Omega 3, 4, Vice-president 4;
CWA 1, 2, 3, 4; Le Cercle Francais 1, 2; Class
Treasurer 1; Debate 4; "Hamlet" 3; "Romeo
and Juliet" 4; Student Voice 3, 4; Social Com-
mittee 4; Band 1.

RICHARD ARMSTRONG

Mondovi

B. S. Social Science, Speech, English
Student Veterans Association 1, 2, 3, 4, Treasur-
er 2, President 3; Alpha Psi Omega 3, 4, Presi-
dent 4; Pi Kappa Delta 1, 2, 3, 4; Toastmasters
Club 3, 4; Intramural Sports 1, 2, 3, 4; Debate
1; "Three Men On A Horse" 3; "Good-by My
Fancy" 3; "Hamlet" 3; "Romeo and Juliet" 4;
"Good-by Again" director 3; Student Voice 4,
Social Committee 3, 4.

RONALD BACKES

New London

B. S. Agriculture Education, Science
FFA 1, 2, 3, 4; Newman Club 1, 2, 3, 4; Vice-
president 3; Toastmasters Club 3, 4; Cheer
Leader 3, 4; "The Male Animal" 2.

JOHN BOWERS

Hudson

B. S. History, Physical Education, English
Student Veterans Association 1, 2, 3, 4; Baseball
2; Football 1; Intramural Sports 1.

BARBARA BURMAN

Amery

B. S. Elementary Education
University of Wisconsin 1; ACE 2, 3, 4, President
4; CWA 2, 3, 4; Sigma Chi Sigma 3, 4; Choir
3, 4; Mixed Chorus 2.

ROBERT CARLSON

Bloomer

B. S. Agriculture Education, Science
FFA 1, 2, 3, 4; Toastmasters Club 3, 4; Football;
Intramural Sports 1, 2; "Kantucky Kabaray" 2;
Homecoming Committee 3.

of 1952

ROBERT CHESKY **Hammond**

B. S. Agriculture Education, Science
FFA 1, 2, 3, 4.

WILLIAM COLLINS **Hastings, Minnesota**

B. S. English, History, Spanish
Newman Club 1, 2, 3; Band 1; Meletean 3, 4;
Student Voice 3, 4, Editor 4; Student Directory 3.

CHARLES CONNELLY **New Richmond**

A. B. Music

ROBERT DeWITTE **Hudson**

B. S. Chemistry, Mathematics, English
Student Veterans Association 4.

DELMAR DIETSCH **Bloomer**

B. S. Secondary Education

ERWIN DOSCH **Amery**

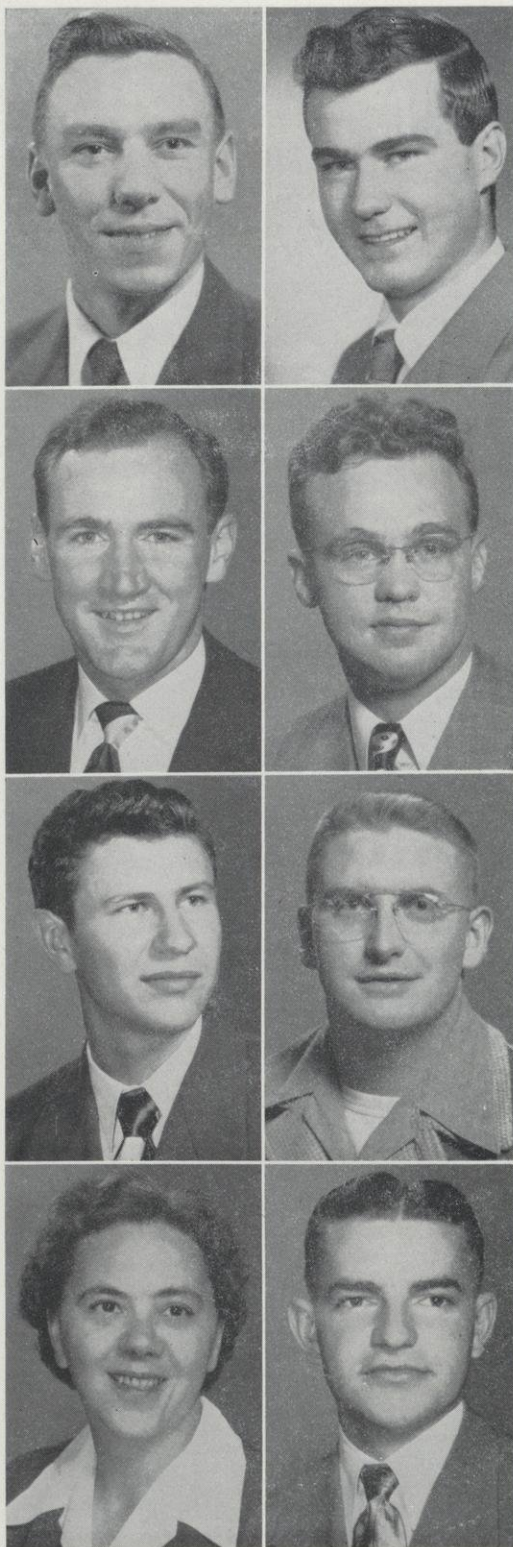
B. S. Physics, Mathematics, English
YMCA 3, 4; Honor Society 1, 2, 3, 4; Mathematics
Club 1, 2, 3, 4; Intramural Sports 1, 2.

MARY ECK **South Fork, Penn.**

B. S. English, Science, Mathematics
Newman Club 4; CWA 1, 2, 3, 4; Mathematics
Club 1; WAA 1, 2, 3, 4, Secretary-treasurer 3;
Who's Who in American Colleges and Universities
4; "Fashion" 4; Winter Carnival Committee 4.

CLIFFORD EHLERS **Sturgeon Bay**

B. S. Biology
Honor Society 1, 2, 3, 4; Recreation club 3;
Newman Club 1, 2, 3, 4.



Senior Class



NORMAN ERICKSON

Curtiss

B. S. Agriculture Education, Science
Northland College 1; FFA 1, 2, 3, 4; Student
Veterans Association 1, 2, 3, 4.

ROY ESSER

Campbellsport

B. S. Agriculture Education, Science
FFA 1, 2, 3, 4; Newman Club 1, 2, 3, 4, Presi-
dent 4; Intramural Sports 1, 2, 3, 4.

FRANCIS FEIDT

Almena

B. S. Agriculture Education, Science
FFA 1, 2, 3, 4, Secretary 4; Newman Club 4.

ELAINE FICK

Wilton

B. S. Music, English, Spanish
Honor Society 1, 2, 3, 4, Vice-president 2; YWCA
1, 2; CWA 1, 2, 3, 4; Sigma Chi Sigma 2, 3, 4,
Vice-president 3, Treasurer 4; MENC 2, 3, 4;
Class Treasurer 4; Band 3, 4; Choir 1, 2, 3, 4;
Mixed Chorus 3; Orchestra 2, 3; Meletean 2;
Student Voice 1; Student Senate 4; Who's Who
in American Colleges and Universities 4.

CARVER FOUKES

Amery

B. S. Secondary Education
University of Wisconsin 1; Mathematics Club 3, 4,
President 4; R Club 3, 4; Toastmasters Club 4,
Treasurer 4; Basketball 3, 4; Football 3, 4;
Intramural Sports 3, 4; Who's Who in American
Colleges and Universities 4.

GENE GILBERTSON

Clear Lake

B. S. Secondary Education

DONALD GOODRICH

River Falls

B. S. Social Science, English, Science
University of Minnesota 3; Honor Society 1, 2, 4;
Newman Club 1, 2; Student Veterans Associa-
tion 1, 2, 4, President 4.

JACK HANSON

Hudson

B. S. English, Speech, Social Science
Student Senate 2, 3, 4, President 4; Debate 1,
2, 3, 4; Oratory 2, 3, 4; Pi Kappa Delta 2, 3, 4;
President 3, 4; Student Voice 1, 2, 3, 4, Alpha
Psi Omega 4; Intramural Sports 1, 2, 3, 4; First
Flight 2; "Goodbye My Fancy" 3; Who's Who in
American Colleges and Universities 4.

of 1952

OMAR HUBBARD Fort Atkinson
B. S. Agriculture Education, Science

ARTHUR JACOBSON Baldwin
B. S. Agriculture Education, Science
FFA 2, 3, 4; Student Veterans Association 4;
Intramural sports 1.

DONALD JACOBSON Hixton
B. S. Elementary Education
ACE 1, 2, 3, 4; YMCA 1, 2, 3, 4; Intramural
Sports 1, 2, 3, 4.

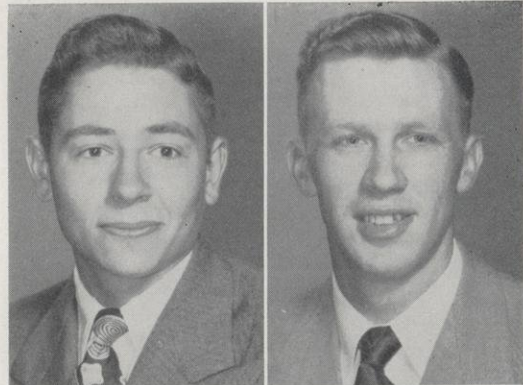
BEVERLY JENSON River Falls
B. S. Elementary Education
ACE 1, 2, 3, 4; Sigma Chi Sigma 3, 4; YWCA
1, 2, 3, 4; CWA 1, 2, 3, 4; Student Voice 3;
Homecoming Attendant 4.

BEVERLY ANN JENSON River Falls
B. S. Language Arts, French
Newman Club 1; Dancing Club 1, 2; CWA 1, 2,
3, 4; Le Cercle Francais 1, 2, President 2; Mele-
tean 1, 2, 3, 4; Student Voice 1, 2, 3, 4; "A
Dumb Waiter" 4; "Othello" 3; Homecoming
Committee 4.

JOSEPH JEVERT Foster, Ill.
B. S. Secondary Education
R Club 2, 3, 4; Football 1, 2, 3, 4; Intramural
Sports 1, 2, 3, 4.

AUDREY JOHNSON Stockholm
B. S. Elementary Education
ACE 1, 2, 3, 4; YWCA 1, 2, 3, 4, Vice-president
4; CWA 1, 2, 3, 4; Dancing Club 1, 2; Palette
Club 2; Prom Committee 3; "A Dumb Waiter" 4.

BERNARD JOHNSON River Falls
B. S. Elementary Education

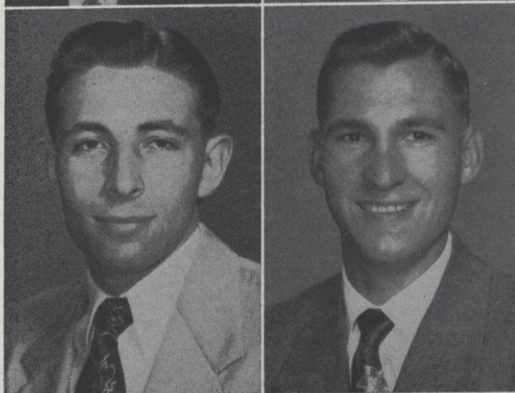


Senior Class



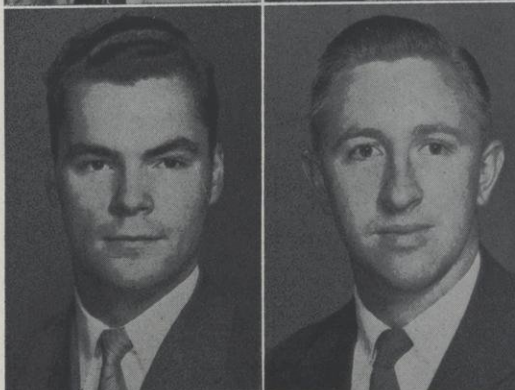
DALE JOHNSON **Stockholm**

B. S. Agriculture Education, Science
FFA 1, 2, 3, 4; Student Veterans Association 1, 2, 3, 4; YMCA 1; Intramural Sports 1, 2, 3, 4; Mixed Chorus 1; Student Senate 1.



WILLIS JOHNSON **Blair**

B. S. Agriculture Education, Science



CY KASTER **St. Paul, Minn.**

B. S. Secondary Education

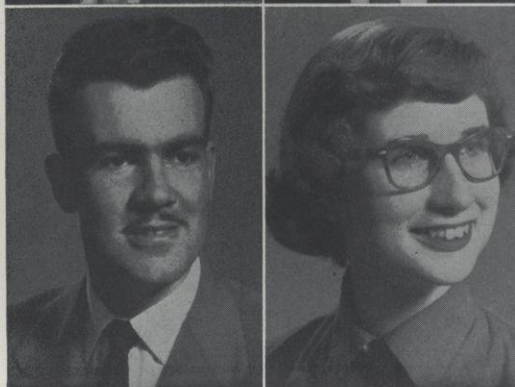


JAMES KIERSTYN **Grand Marsh**

B. S. Agriculture Education, Science
Stevens Point State College and University of Wisconsin 1; Newman Club 1, 2, 3, 4; Toastmasters Club 3, 4, President 4; FFA 1, 2, 3, 4; Football 1, 2, 3; Homecoming Committee 2.

IVAN KITTEL **New Richmond**

B. S. Agriculture Education, Science
FFA 2, 3, 4, President 4; Baseball 1, 2, 3, 4; Intramural Sports 1, 2, 3, 4; "A Dumb Waiter" 4; Homecoming Committee 3; Prom Committee 3; Student Senate 4.



DONALD La BERGE **Ladysmith**

B. S. Agriculture Education, Science

BERNARD LIUN **Barron**

A. B. Social Science, Economics, English
YMCA 1, 2; Le Cercle Francais 1; Choir 1, 2, 3, 4; Glee Club 1, 2; Mixed Chorus 2, 3; Student Voice 1; Homecoming Committee 4.

ALICE LUCK **Milwaukee**

B. S. Music, English
Masquers 1, 2, 3, 4; MENC 2, 3, 4; Choir 1, 2, 3, 4; Mixed Chorus 2, 3; Orchestra 1, 2, 3; "Othello" 2; "Three Men on a Horse" 3; "Hamlet" 3; Student Voice 2, 3, 4.

of 1952

MARGIE LUND

Woodville

B. S. Social Science, Physical Education, English

WAA 1, 2, 3, 4, President 3; Student Veterans Association 4; CWA 1, 2, 3, 4; Recreation Club 3; Who's Who in American Colleges and Universities 4.

HOWARD McCARTY

New Auburn

B. S. Agriculture Education, Science
FFA 1, 2, 3, 4; Secretary 4; Intramural Sports 1, 2, 3, 4; Class Vice-president 4.

LESLIE MCKENZIE

St. Croix Falls

A. B. Chemistry

GEORGE MELBY

Ettrick

B. S. Agriculture Education Science

DALE METCALF

Greenwood

B. S. Agriculture Education, Science
FFA 1, 2, 3, 4; Honor Society 4; Student Veterans Association 1, 2, 3, 4; Intramural Sports 1, 2, 3, 4.

ROBERT MEYER

River Falls

B. S. Agriculture Education, Science

RAYMOND MILLER

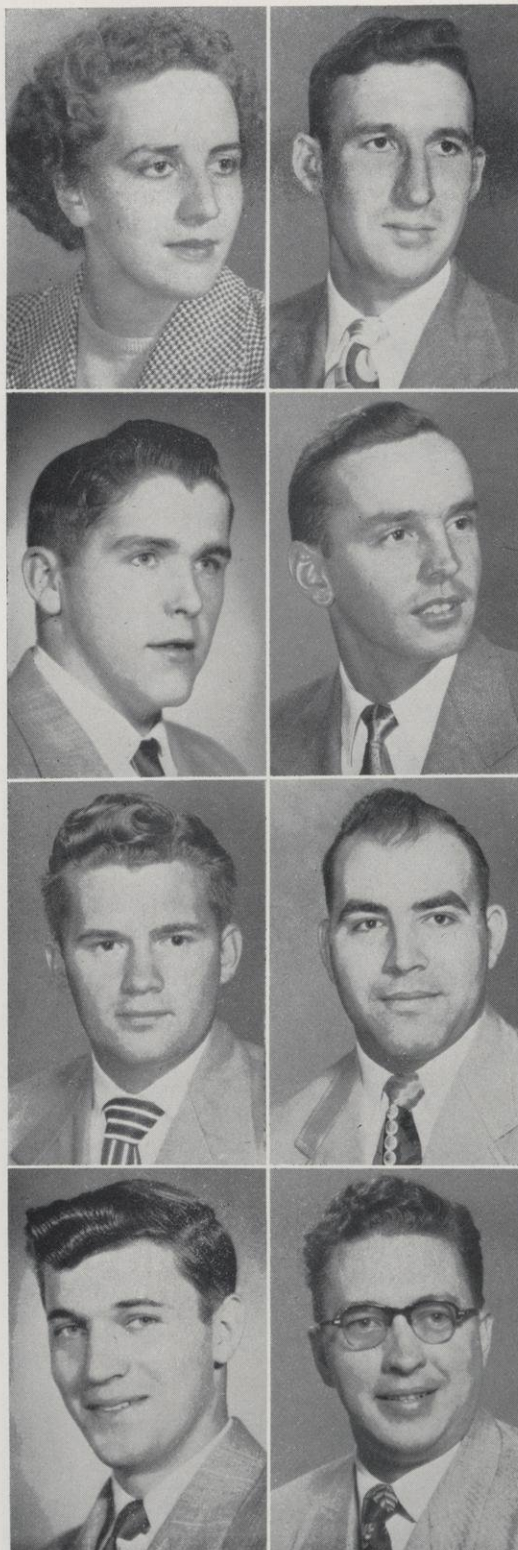
Prairie Farm

B. S. Agriculture Education, Science
University of Wisconsin Extension Division 1; FFA 1, 2, 3, 4; YMCA 1, 2, 3, 4, President 4, Vice-president 3; Intramural Sports 1.

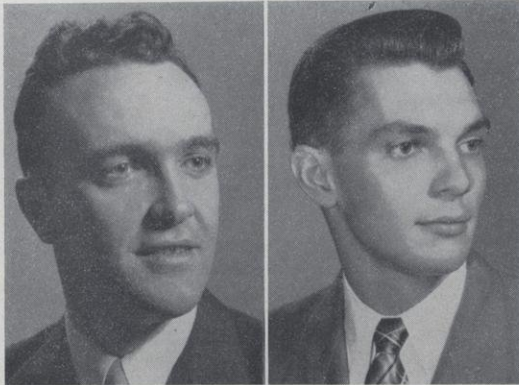
EDWIN MINOT

Bruce

B. S. Agriculture Education, Science
University of Wisconsin Extension Division 1; FFA 1, 2, 3, 4; Newman Club 1, 2, 3; Student Veterans Association 1, 2, 3, 4; Track 1, 2; Intramural Sports 1, 2, 3, 4.



Senior Class

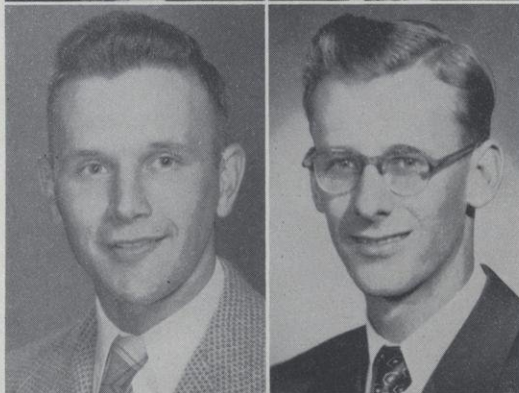


HAROLD MONETTE Bessemer, Mich.

B. S. Biology, History, English
Gogebic Junior College, Ironwood, Michigan 1;
Intramural Sports 3.

ERNEST MOSBAEK Cable

B. S. Agriculture Education, Science
FFA 1, 2, 3, 4; Honor Society 2, 3; YMCA 1,
2, 3, 4; Student Senate 4, Treasurer 4; Class
President 4; Who's Who in American Colleges
and Universities 4.

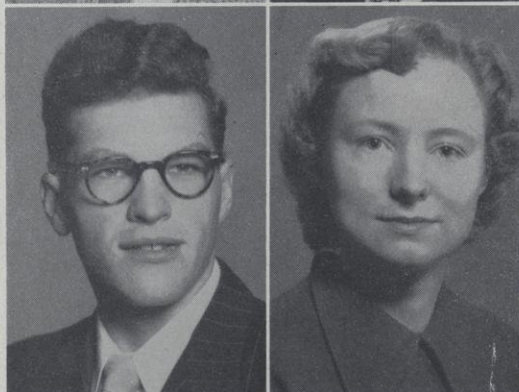


HARLAN NELSON Luck

B. S. Agriculture Education, Science

TENNY NEPRUD Boscobel

B. S. Chemistry, Music, English
MENC 2, 3, 4; Le Cercle Francais 1, 2, President
1; Intramural Sports 2, 3; Band 1, 2, 3, 4;
Choir 3, 4; Glee Club 1; Mixed Chorus 1, 2;
Orchestra 1, 2; Pep Band 1, 2, 3, 4.



NORMAN NOAH Greenwood

B. S. Biology, Speech, English
YMCA 1, 2, 3, 4, Vice-president 2; Alpha Psi
Omega 2, 3, 4, Vice-president 3, Secretary 4;
Masquers 1, 2, 3, 4, President 3; Treasurer 4;
Toastmasters Club 3, 4; Dancing Club 2, Treasur-
er 2; Band 1; Orchestra 1; "You Can't Take It
With You" 1; "Othello" 2; "The Male Animal"
2; "Discord" 2; "Three Men on a Horse" 3;
"Hamlet" 3; "Goodbye My Fancy" 3; "Aladdin"
4; "Romeo and Juliet" 4.

BEVERLY OLSON Turtle Lake

B. S. Elementary Education
ACE 2, 3, 4; WAA 1, 2, 3, 4, Vice-president 3;
YWCA 1, 2, 3, 4; CWA 1, 2, 3, 4; Palette Club
1, 2; Prom Committee 3.



EARL PASCHALL Forest Park, Ill.

B. S. Elementary Education
ACE 4, FFA 1, 2; Student Veterans Association 1;
Choir 4.

JEROME PEABODY River Falls

A. B. Social Science, Speech, Science
University of Minnesota 1, 2; International Re-
lations Club 3; Newman Club 3, 4; Dancing
Club 3; Toastmasters Club 3, 4, President 4;
Mixed Chorus 3.

of 1952

HELEN PETERSON New Richmond

B. S. Elementary Education
ACE 1, 2, 3, 4, Vice-president 3; YWCA 1, 2, 3, 4, Vice-president 2; Sigma Chi Sigma 2, 3, 4; CWA 1, 2, 3, 4, President 4; Mixed Chorus 2; Prom Committee 3; Winter Carnival Committee 4; Student Voice 3; Who's Who in American Colleges and Universities 4.

GERALD PETERSON Spring Valley

B. S. Elementary Education
ACE 1, YMCA 2; Intramural Sports 1, 3.

ROBERT PIERCE Boyd

B. S. Science, Mathematics

DWAYNE RASMUSSEN Amery

B. S. Agriculture Education, Science
FFA 1, 2, 3, 4, Treasurer 4; YMCA 2, 3; Gamma Delta 4; Intramural Sports 1, 2, 3, 4; Prom Committee 3; Homecoming Committee 4.

JANET REED River Falls

A. B. English, Economics, History
CWA 1, 2, 3, 4; WAA 1, 2, 3, 4; Student Voice 2, 3; First Flight 3.

MARY LOU RILEY Ellsworth

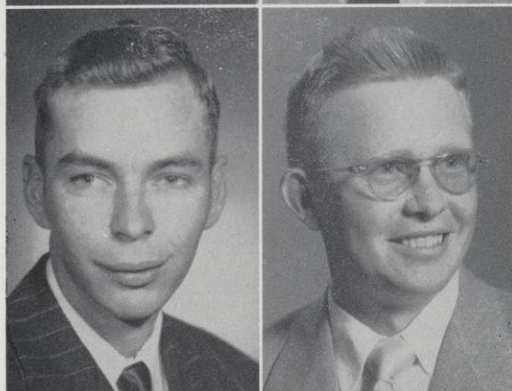
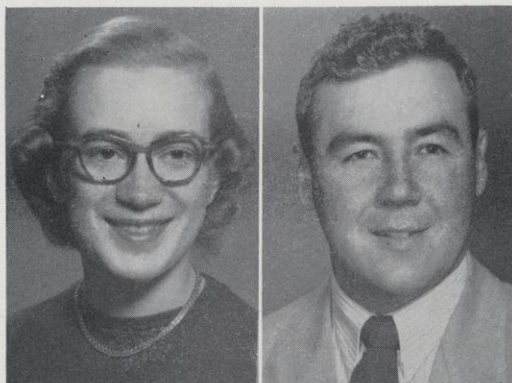
B. S. Biology, Mathematics, English
Newman Club 1, 2, 3, 4; CWA 1, 2, 3, 4; Mathematics Club 4; Band 1; Meletean 3, 4.

BARBARA RONNINGEN River Falls

B. S. Elementary Education
ACE 1, 2, 3, 4; YWCA 1, 2, 3, 4; CWA 1, 2, 3, 4; Dancing Club 2; Student Voice 3, 4; Prom Committee 3; Homecoming Committee 1, 2, 4.

FRANK ROSKOS Independence

B. S. Agriculture Education, Science

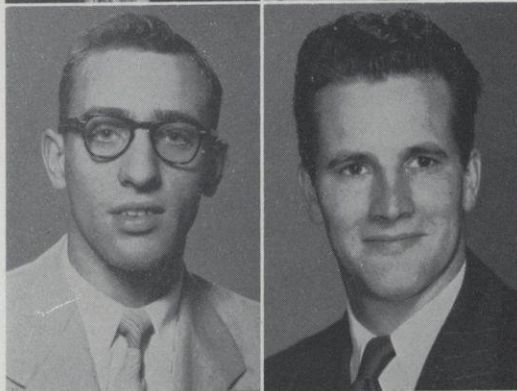


Senior Class



ALLAN RYDMARK **Ladysmith**
B. S. Agriculture Education, Science

ARNOLD SCHULTZ
B. S. Social Science, Biology, English
Toastmasters Club 3, 4; President 3; Student
Veterans Associations 1, 2, 3, 4; Intramural
Sports 1, 2, 3, 4; "Goodbye Again" 3.



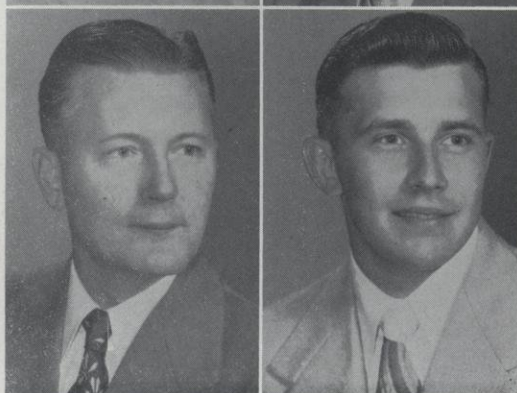
JOHN SHIELD **River Falls**
B. S. Secondary Education
R Club 2, 3, 4; Football 2, 3, 4; Basketball 1,
2, 3, 4; Baseball 1, 2.

HUBERT SMITH **River Falls**
B. S. Agriculture Education, Science



JOYCE STAPLETON **River Falls**
B. S. English, History, Spanish
Honor Society 1, 2, 3, 4; Newman Club 1, 2,
3; CWA 1, 2, 3, 4; Dancing Club 2, 3; Mele-
tean 3, 4, Editor 3; Student Voice 1, 2, 4; Home-
coming Committee 4; Who's Who in American
Colleges and Universities 4.

LEROY STERN **Hastings, Minn.**
B. S. English, Art, Speech
Newman Club 1, 2; Masquers 1, 2; Alpha Psi
Omega 4; Palette Club 1, 2, President 2; Cheer-
leading 4; Mixed Chorus 2; Meletean 2, 3, 4,
Editor 3; Student Voice 1, 2, 3, 4; First Flight
2; Prom Committee 3; Homecoming Committee
4; "You Can't Take It With You" 1; "The Male
Animal" 2; "Othello" 3; "A Dumb Waiter" 4.



DONALD STIEHM **Catawba**
B. S. Elementary Education

SIGURD SWANSON **Mason**
B. S. Chemistry, Mathematics
Mathematics Club 2, 3, 4; Toastmasters Club 4;
Class President 3; Intramural Sports 1, 2.

of 1952

ROBERT THORSON

Blair

B. S. Science, Mathematics, English
YMCA 1, 2, 3, 4; Mathematics Club 1, 2; Student Veterans Association 1, 2, 3, 4; Intramural Sports 1, 2, 3, 4.

IRENE TILLER

Menomonie

B. S. English, Physical Education, History
The Stout Institute 1, 2; WAA 4, Secretary 4; Class Secretary 4.

WILLIAM TILSNER

St. Paul, Minn.

B. S. Elementary Education

DONALD TORGERSON

Stoughton

B. S. Biology, Physical Education, English
Honor Society 2, 3, 4; Toastmasters Club 3, 4, President 4; Student Veterans Association 1, 2, 3, 4, Secretary 4; Gamma Delta 3, 4; President 4; Intramural Sports 1, 2, 3, 4.

DONALD TREWARTHA

Neillsville

A. B. Biology, English
Intramural Sports 1, 2, 3, 4; Student Voice 1, 2, 3, 4; Assistant Editor 4; Homecoming Committee 2, 3, 4, Chairman 4; Prom Committee 3; Winter Carnival 2.

JOHN ULANDER

Boyd

B. S. Agriculture Education, Science
FFA 1, 2, 3, 4, Treasurer 4; Newman Club 1, 2; Student Veterans Association 1, 2, 3, 4; Intramural Sports 1, 2, 3, 4.

JOHN VALIGA

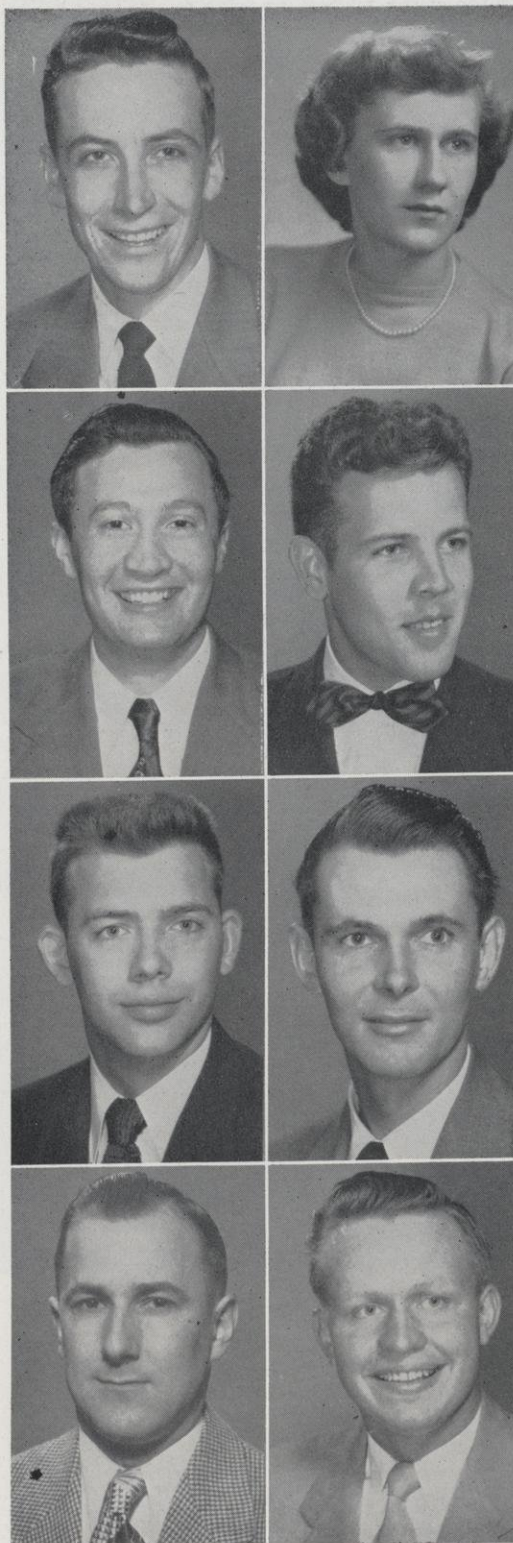
River Falls

B. S. Agriculture Education, Science

RICHARD VILSTRUP

Luck

B. S. Agriculture Education, Science
Superior State College 1; FFA 2, 3, 4; Honor Society 2, 3, 4, President 3; Pi Kappa Delta 3, 4, President 3; Student Veterans Association 3; Intramural Sports 2, 3; Debate 2, 3; Oratory 2, 3, 4; Student Senate 4; Who's Who in American Colleges and Universities 4.



Senior Class of 1952



PETER WALLENDAL

Waupun

B. S. Agriculture Education, Science
FFA 1, 2, 3, 4; YMCA 2, 3; Dancing Club 2, 3;
Intramural Sports 1, 2, 3, 4; Football 1, 2;
"Discord" 2; Meletean 2, 3, 4.

VIRGINIA WEATHERHEAD New Richmond

B. S. History, English, French
YWCA 1, 2; Dancing Club 2, 3; "Goodbye My
Fancy" 3; "Ghosts" 3; "Aladdin" 4.



HARLEY HARKNESS

Danbury

B. S. Elementary Education
Class President 1; Student Senate 1, 2; R Club
2, 3, 4; Baseball 1, 2, 3; Basketball 2, 3, 4;
Football 1, 2, 3, 4; Mixed Chorus 2.

SENIOR CLASS OFFICERS

ERNEST MOSBAEK	President
HOWARD McCARTY	Vice-president
IRENE TILLER	Secretary
ARNOLD JOHNSON	Treasurer

1952 Rural Graduates

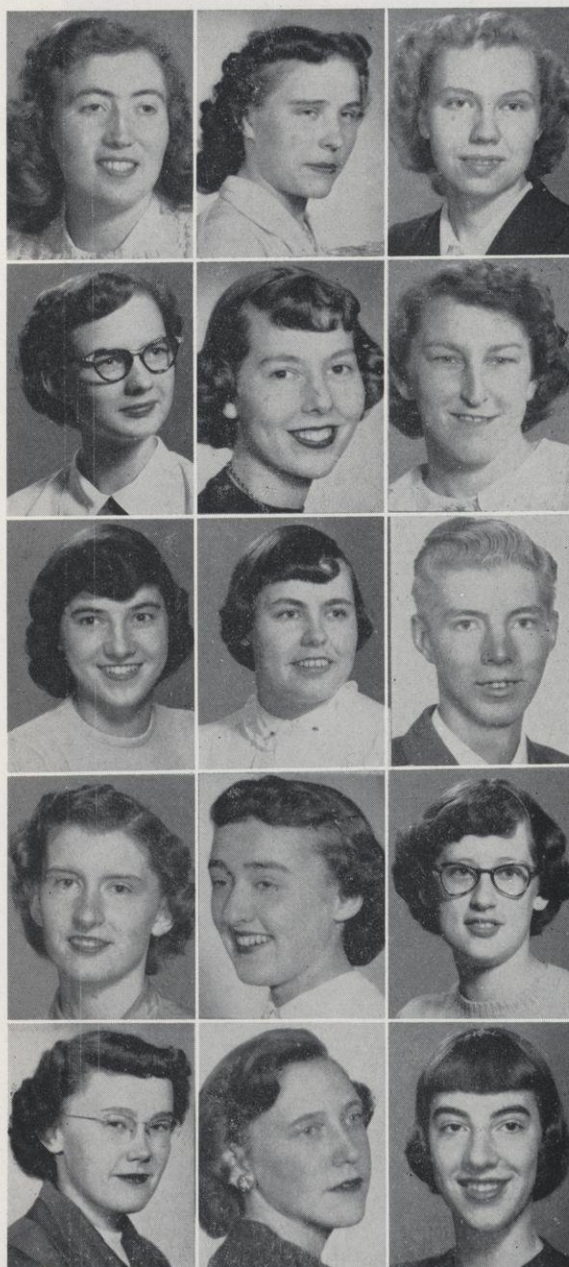
MARLYS BOLIN Bay City
 DONNA BARINGER Red Wing, Minn.
 MARJORIE HOLLERUD Glenwood City

EVELYN LARSON Baldwin
 LOIS LARSON River Falls
 LORRAINE LODERMEIER Amery

PATRICIA NELSON Stillwater, Minn.
 JANE PLUMB St. Paul, Minn.
 KENNETH ROEN River Falls

LORRAINE RUDESILL Baldwin
 AUDREY SCHWEIZER River Falls
 ALICE SOMMERFELD Chippewa Falls

FLORA WOODRUFF Chippewa Falls
 ADELINE ULSRUD River Falls
 BONITA YOUNG Ellsworth





Junior Class

JEAN ALLIE	Secondary	Ellsworth
KENNETH AMES	Secondary	River Falls
RONALD AMES	Secondary	Ellsworth
WILLIAM AMUNDSON	Elementary	Prairie Farm
DELBERT ANDERSON	Secondary	Stockholm
JAMES ASHLEY	Elementary	Chippewa Falls
JEAN BJORNSON	Elementary	Stanley
JO ANN BJORNSTAD	Elementary	Ellsworth
CHARLES BRAUN	Agriculture	Sarona
JAMES CHAFFEE	Agriculture	Menomonie
JUNE CLARK	Elementary	Osceola
ELEANOR DAVIS	Elementary	Spring Valley
RUTH DAVIS	Elementary	Spring Valley
CAROL DOFFING	Secondary	River Falls
DALE DOPKINS	Elementary	River Falls
EDGAR DROGEMULLER	Agriculture	Preston, Minn.
GERALD EASTON	Agriculture	Footville
ROBERT ERICKSON	Secondary	Clear Lake
WILBUR FALKENTHAL	Secondary	Cumberland
LLOYD FELTES	Agriculture	Arcadia
MARILYN FIEDLER	Elementary	Prescott

of 1952

RUTH FOSTER River Falls
Secondary

BEVERLY GAARD Ellsworth
Elementary

PAUL GAUSTAD River Falls
Secondary

ANNETTE GERAETS Elmwood
Secondary

ROBERT GRANUM Holmen
Agriculture

JOHN GREENQUIST St. Croix Falls
Secondary

ARTHUR HAGEMAN Ellsworth
Secondary

WILLARD HAGSTROM Arbor Vitae
Secondary

DOROTHY HAMMELMAN Deer Park
Elementary

VERDAYNE HANSON Osseo
Pre-Professional

GENE HARTMAN Clintonville
Agriculture

VILAS HENDERSON Birnamwood
Secondary

JEAN HERALD Baldwin
Elementary

JEROME HYTRY Dancy
Agriculture

DONALD JENSEN La Farge
Agriculture

ROBERT JENSEN River Falls
Secondary

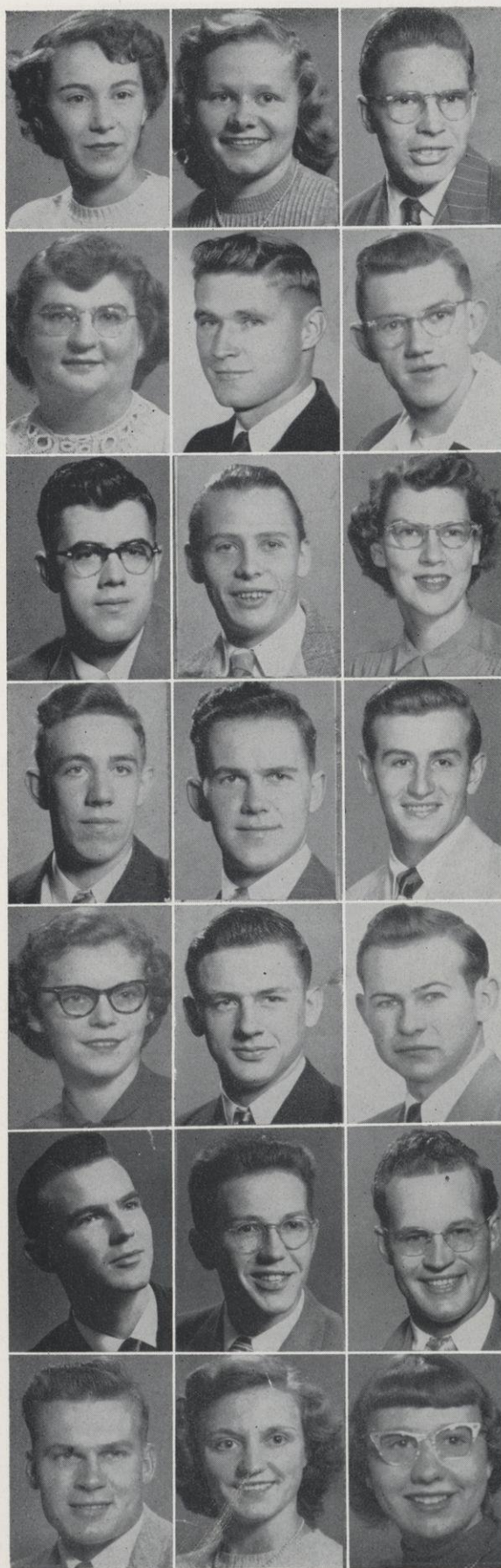
DAVID JOHNSON La Crosse
Agriculture

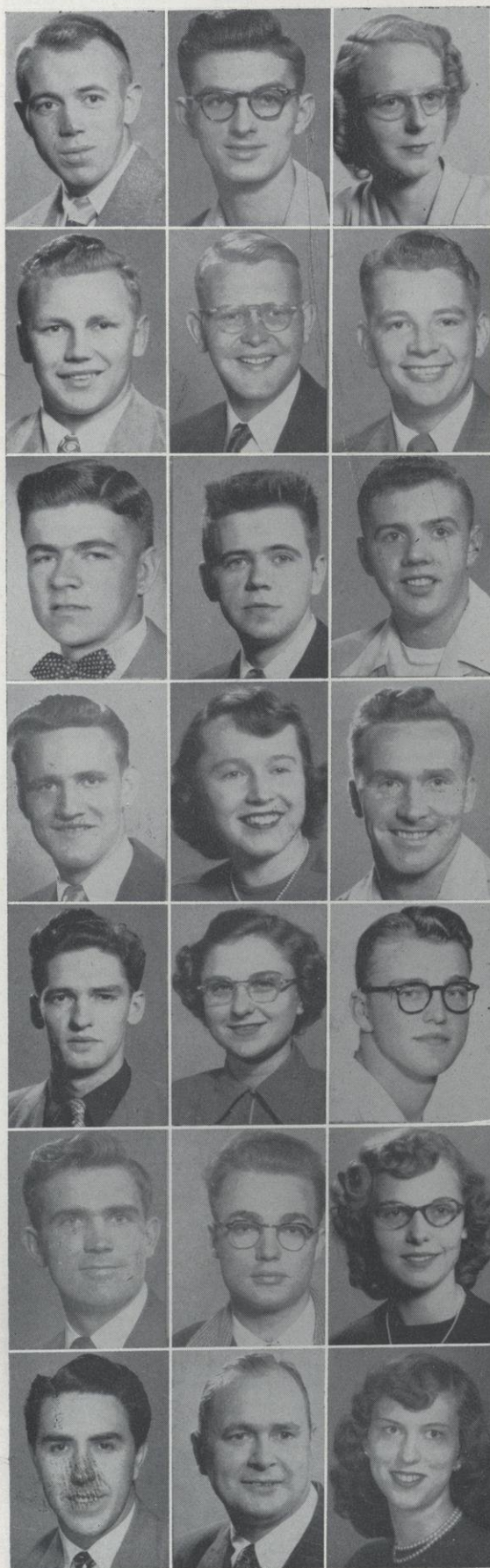
EARL JOHNSON Whitehall
Elementary

RODNEY JOHNSON Frederic
Agriculture

CAROL JONES Amery
Elementary

DONNA JONES River Falls
Secondary





Junior Class

ALF KIRKEENG	Agriculture	Rockland
ROGER KNIEFF	Elementary	River Falls
DELORES KREUZIGER	Elementary	River Falls
LLOYD LAINE	Agriculture	Iron River
JOHN LEADHOLM	Secondary	Amery
ARDELL LINNERUD	Agriculture	Whitehall
DALE LIUM	Secondary	Barron
ARVIN LOVAAS	Secondary	Hudson
GEORGE McKENZIE	Secondary	St. Croix Falls
MELTON MARTINSON	Elementary	Holcombe
RAMONA MEYER	Elementary	River Falls
RAYMOND MOORE	Agriculture	Catawba
LESTER MUCKENHIRN	Secondary	Hudson
OLIVE MULHOLLAM	Elementary	Spring Valley
DONALD NELSON	Secondary	Hammond
DALE NESTINGEN	Agriculture	Blair
LESLIE NEWVILLE	Secondary	Prairie Farm
GENEVIEVE OLSON	Elementary	Amery
DALE PARNELL	Liberal Arts	River Falls
ROBERT PERRY	Secondary	River Falls
BEVERLY PETERSON	Elementary	Comstock

of 1952

MABEL PETERSON	Deer Park
Elementary	
MARGARET REMUND	Amery
Elementary	
JOHN REQUE	Spring Valley
Pre-Professional	
PETER RUSS	Bay City
Liberal Arts	
JAMES SAUERMAN	Sparta
Agriculture	
MARY SAUERMAN	Elmwood
Elementary	
KEITH SCHMIDT	Ladysmith
Secondary	
PHILIP SCHMIDT	Ladysmith
Agriculture	
DONALD SCHOEDEL	West Bend
Agriculture	
MARY SHANNON	Ellsworth
Elementary	
MELVIN SLIND	Downing
Liberal Arts	
PEGGY SMITH	River Falls
Elementary	
GERMAINE STEEN	Beldenville
Elementary	
JAMES SUEHRING	Tigerton
Agriculture	
ROBERT SWANSON	Mason
Secondary	
AUDREY SWENSON	Ellsworth
Elementary	
LOIS SWENSON	Amery
Elementary	
HERBERT TAUCHEN	Dorchester
Agriculture	
VIRGINIA THOMPSON	Chippewa Falls
Elementary	
JAMES VANDE BERG	Baldwin
Liberal Arts	
PATRICIA VAN HORN	Hudson
Elementary	



Junior Class of 1952

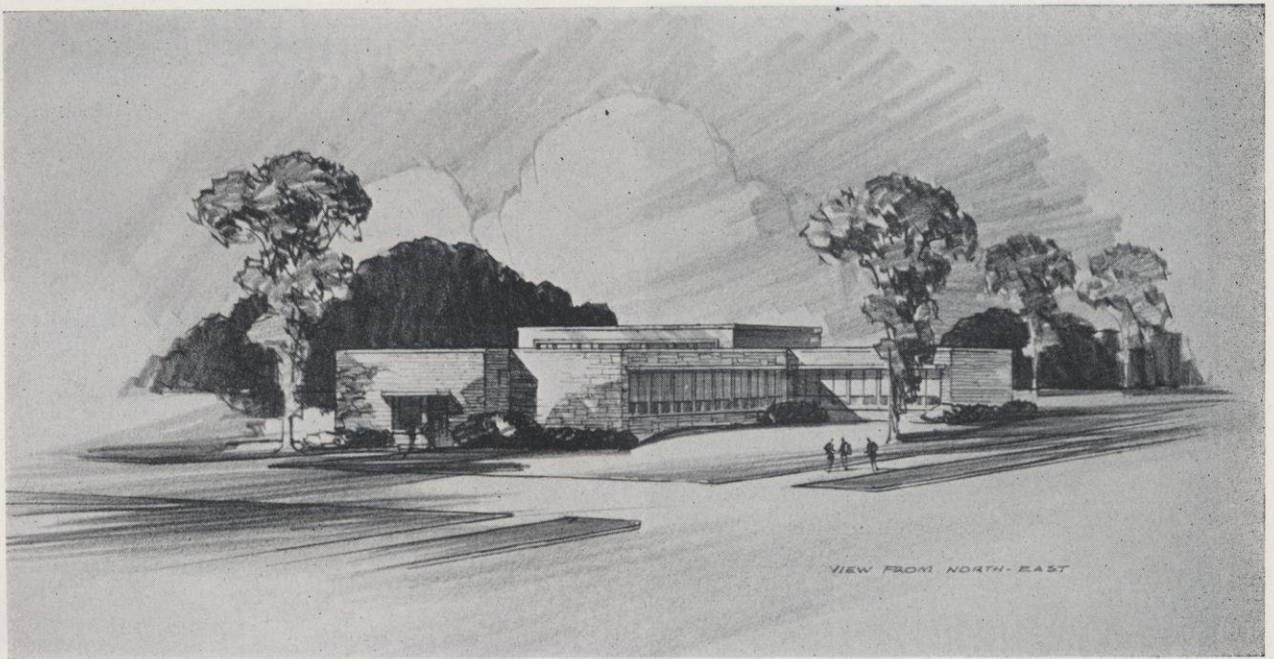


DUANE WESTERBERG	Secondary	Pepin
LAVONA WIFF	Elementary	Elmwood
PAUL WILLINK	Secondary	Baldwin
MARY WOOD	Elementary	Spring Valley
HEATHER DOPKINS	Elementary	Norwalk
ARLENE PECHACEK	Secondary	Hager City
MARION AEBLY	Elementary	Downing

CLASS OFFICERS

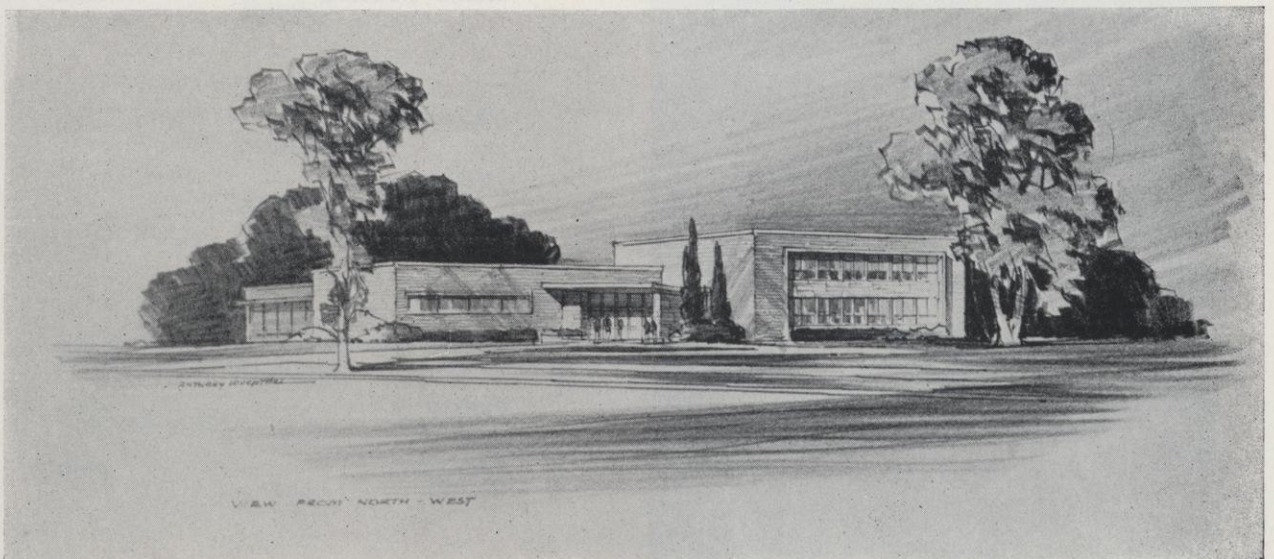
Duane Westerberg
Robert Jensen
Peggy Smith
Annette Geraets
James J. McLaughlin
Bernard L. McCarthy

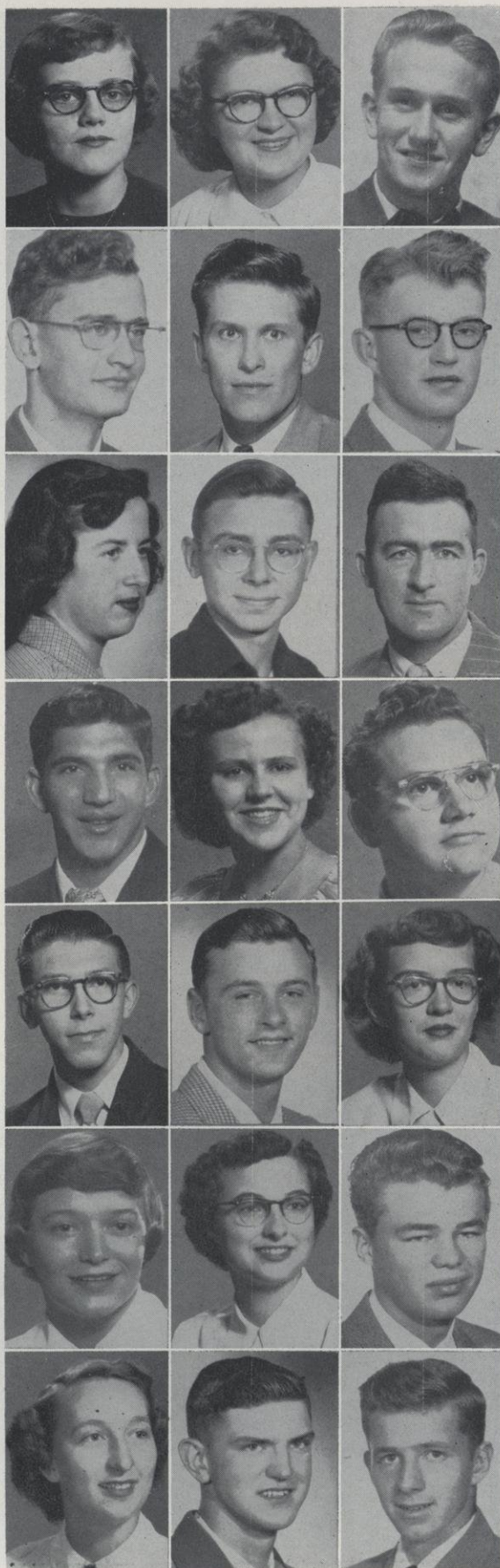
President
Vice President
Secretary
Treasurer
Advisers



PROPOSED LIBRARY

The Board of Regents has allocated \$750,000 for the construction of the new library at River Falls State College which will begin in June, 1952. The building is to go on South Campus, north of the tennis court with the front facing west toward South Hall and the rear facing fourth street.



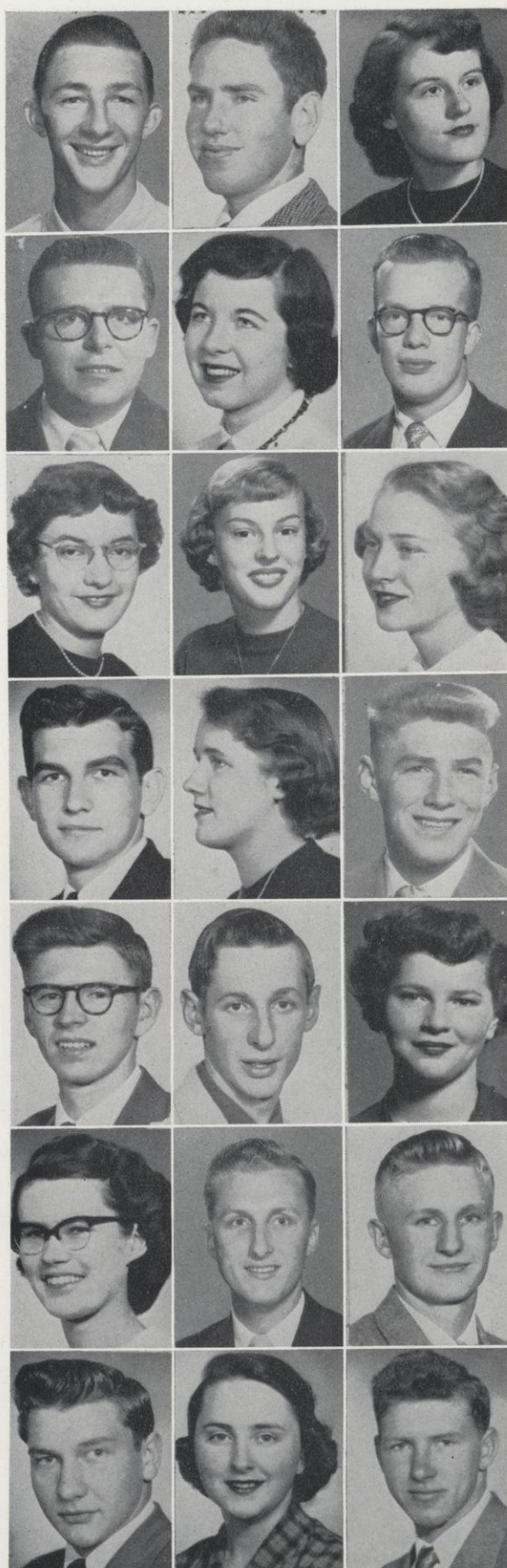


Sophomore Class

BARBARA AABY	Elementary	Woodville
CAROL ANDERSON	Secondary	Clayton
CHARLES ANDERSON	Agriculture	Eau Claire
ROBERT ANDERSON	Elementary	Lewis
PAUL BECKEL	Agriculture	Kasota, Minn.
STANLEY BERGUM	Agriculture	Wheeler
DAISY BOE	Elementary	Deer Park
ARCHIBALD BOURNE	Agriculture	Durand
RAYMOND BUCHEGER	Agriculture	Butternut
JUAN CARO	Agriculture	Rio Grande, Texas
JEAN CATURIA	Elementary	Plum City
JAMES CERELLO	Secondary	Stillwater, Minn.
PHILIP CHRISTIANSON	Pre-Professional	Augusta
RAYMOND CZECH	Elementary	Thorp
BEULAH DAHLBERG	Secondary	Frederic
MARGERY DEANS	Secondary	Hammond
HELEN WERNER	Elementary	Weston
HAROLD ERICKSON	Secondary	Aniwa
THELMA ERICKSON	Liberal Arts	Hudson
DONALD FICK	Liberal Arts	Wilton
JOHN FOSS	Agriculture	Eitrick

of 1952

JOHN GEHN	Secondary	Elmwood
LAWTON GENTRY	Agriculture	River Falls
JACKIE GREENE	Elementary	River Falls
ROBERT GULDNER	Secondary	Spring Valley
MARY JANE HAESSLY	Elementary	Ellsworth
CLIFTON HARMANN	Agriculture	Algoma
MARGARET HELMER	Secondary	Plymouth
DOROTHY INGLIS	Elementary	River Falls
GAYLE JACOBSON	Pre-Professional	Woodville
GERALD KAPAUN	Unclassified	Hudson
MARJORIE KATNER	Elementary	Hudson
DONALD LANDBERG	Pre-Professional	Glenwood City
BERKLEY LARSON	Pre-Professional	Frederic
RICHARD LEIS	Agriculture	Cashton
PATRICIA McCOLLOW	Elementary	River Falls
ARLENE MILLER	Elementary	Maiden Rock
GERALD MOTT	Secondary	Frederic
ALLEN NELSON	Agriculture	Plum City
CHARLES NELSON	Unclassified	Hudson
LORRAINE NORDBY	Secondary	Prairie Farm
JOHN OEDSMA	Agriculture	Galesville





Sophomore Class

HAROLD OLSON	Elementary	River Falls
RUEBEN PATRIKUS	Agriculture	Clintonville
TED PECHACEK	Secondary	River Falls
LAWRENCE PEDERSON	Pre-Professional	Cumberland
MARILYN PETERSON	Elementary	Maiden Rock
WILLIAM PICKERIGN	Agriculture	Eau Claire
DELMAR POLZIN	Agriculture	Bloomer
JARVIS PRATT	Pre-Professional	Bradford, Vermont
ED RINDFLEISCH	Elementary	Mosinee
JEROME RIVARD	Pre-Professional	Clear Lake
JOHN ROMUNDSON	Agriculture	Amherst
NICK ROSANDICK	Agriculture	Granton
ARDIS ROZEHNAL	Unclassified	River Falls
RITA RUEMMELE	Elementary	Hudson
JAMES RUPERT	Secondary	River Falls
JULIANN RYAN	Elementary	Hudson
DONNA SAMMONS	Elementary	Oshkosh
JAMES SAXTON	Secondary	Alma
RAYMOND SCHOFIELD	Pre-Professional	Chetek
MARLYN SEEHAFFER	Agriculture	Marshfield
ROBERT SEVERSON	Agriculture	Eau Claire

of 1952

V. PATRICIA SHEFFIELD	Secondary	New Auburn
HARLAN SIEBRECHT	Elementary	Amery
EVEREST SONSALLA	Agriculture	Arcadia
CAROLYN STYER	Elementary	Menomonie
EUGENE SWANSON	Secondary	Hager City
CORINNE TANDBERG	Pre-Professional	Wanderoos
GENEVIEVE THANNUM	Elementary	Hayward
DEAN THORNE	Elementary	Reedsburg
JOANNE TURNER	Unclassified	Hammond
LARRY VOLLRATH	Secondary	Greenwood
PAUL WEBSTER	Unclassified	Ellsworth
BETTY WISKERCHEN	Secondary	Pepin
MARVIN FAIT	Agriculture	Auburndale



CLASS OFFICERS

John Gehn	President
Jackie Greene	Vice President
Carolyn Styer	Secretary
Don Krause	Treasurer



Freshman Class

JEAN ADRIAN	Secondary	Chippewa Falls
MARY ALDEN	Elementary	El Paso
ALLAN ANDERSON	Secondary	Grantsburg
JERRY ANDERSON	Agriculture	Deronda
RICHARD AUKEMA	Secondary	Bay City
HALBERT BELT	Elementary	Warrens
JANIS BENSON	Unclassified	River Falls
MERLE BERGREN	Unclassified	Amery
KONVAL BERGUM	Agriculture	Wheeler
JOAN BINKOWSKI	Rural	Elmwood
PAUL BLADL	Agriculture	Owen
LAVERNE BOLL	Unclassified	Plymouth
EDWARD BOODY	Unclassified	Hudson
HELEN BOSMAN	Elementary	Princeton
GLORIS BUCKNER	Elementary	Clear Lake
JOHN BURT	Agriculture	Independence
DONALD CAREW	Unclassified	Elcho
CLELAND COOK	Unclassified	Luck
JOHN DAVEE	Unclassified	River Falls
HELEN DAVIS	Elementary	Spring Valley
BEVERLY DE NUCCI	Elementary	Roberts

of 1952

ELON DE SMITH	Unclassified	Baldwin
BURT DEVINE	Agriculture	Withee
SALLY DICKINSON	Secondary	Hudson

NORMA DIERKS	Secondary	Comstock
MARY DOOLITTLE	Elementary	River Falls
ALFRED DU BOIS	Unclassified	Chetek

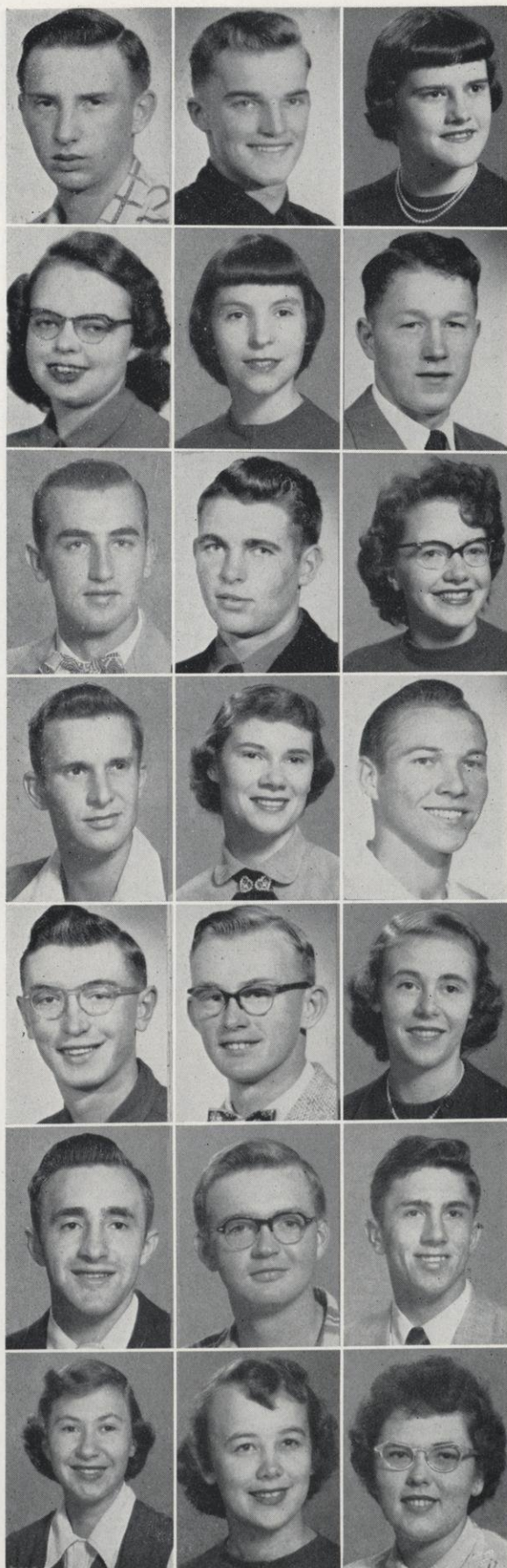
ROBERT EASTON	Secondary	Footville
ALLEN ERICKSON	Unclassified	Grantsburg
FAITH ERICKSON	Unclassified	Birnamwood

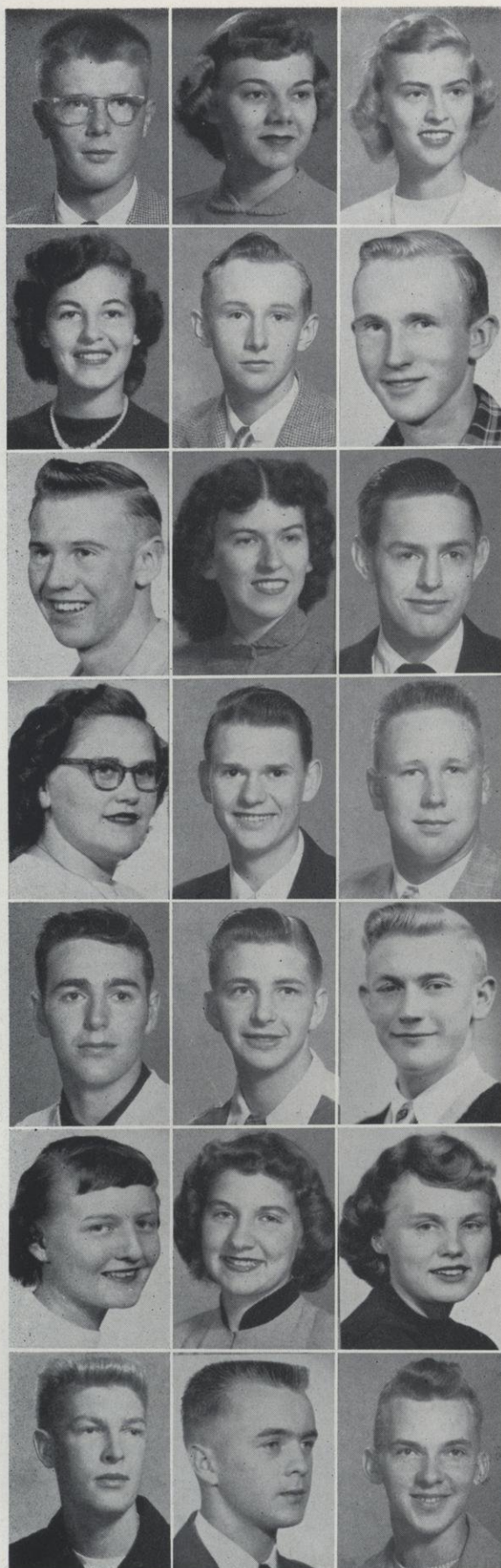
PAUL FELSHEIM	Unclassified	Arcadia
PATRICIA FISHER	Rural	Thorp
ERVIN GAY	Agriculture	Owen

DONALD GETSCHEL	Unclassified	Osceola
JAMES GLENZINSKI	Agriculture	Dodge
JANET GORRES	Rural	Amery

WALTER GRABON	Unclassified	Thorp
RICHARD GRANUM	Agriculture	Holmen
JOSEPH GREGORICH	Agriculture	Greenwood

MARY GRINLEY	Elementary	Woodville
MARILYN HAGLUND	Rural	Maiden Rock
DORA HAHN	Unclassified	Humbird





Freshman Class

ROGER HAMMER Hawkins
Unclassified

ILABELLE HANSON Deer Park
Rural

JOAN HANSON Durand
Elementary

SHIRLEY HARRISON Baldwin
Unclassified

HAROLD HECK Mondovi
Agriculture

JOHN HENDRICKSON Barron
Unclassified

CLARK HUSTON Barron
Unclassified

GRACE HUTCHINS River Falls
Unclassified

EUGENE ISAACSON Baldwin
Unclassified

JOYCE JACOBSON Ridgeland
Elementary

FRANK JANISCH Alma Center
Unclassified

MERLE JARCHOW New Richmond
Agriculture

LYLE JOHNSON River Falls
Unclassified

KENNETH KEEHN Boyd
Unclassified

ROBERT KOENIG Chetek
Secondary

JEANNINE KUHN Wilson
Elementary

BARBARA LADD Barronett
Rural

IDA LARSON River Falls
Rural

STANLEY LEHMAN Mondovi
Agriculture

ROGER LEXVOLD Glenwood City
Pre-Professional

RICHARD LUCKWALDT Baldwin
Secondary

of 1952

MARJORIE LUNDGREN
Elementary

ERNA MATSON
Elementary

BIRDELLE LYSDAHL
Elementary

KATHLEEN MILLER
Elementary

JANICE MOEN
Elementary

MARVIN MOY
Agriculture

MARY MURPHY
Secondary

MILDRED NARLOCK
Elementary

JOHN NELSON
Unclassified

GERALD NEWVILLE
Agriculture

HERBERT NICKEL
Unclassified

JOAN NICKLEBY
Unclassified

WILLARD OLSEN
Unclassified

MARILYN OSTNESS
Elementary

DALE OWEN
Unclassified

PHYLLIS PABST
Elementary

BARBARA PALEWICZ
Unclassified

DONALD PEHLER
Agriculture

AUDREY PETERSON
Elementary

GERALD PETERSON
Unclassified

LEE PORTER
Secondary

Bruce

Wilson

Owen

Clayton

Prairie Farm

Mondovi

Ellsworth

Iola

Star Prairie

Clear Lake

Granton

Hudson

Tomah

River Falls

Durand

Clayton

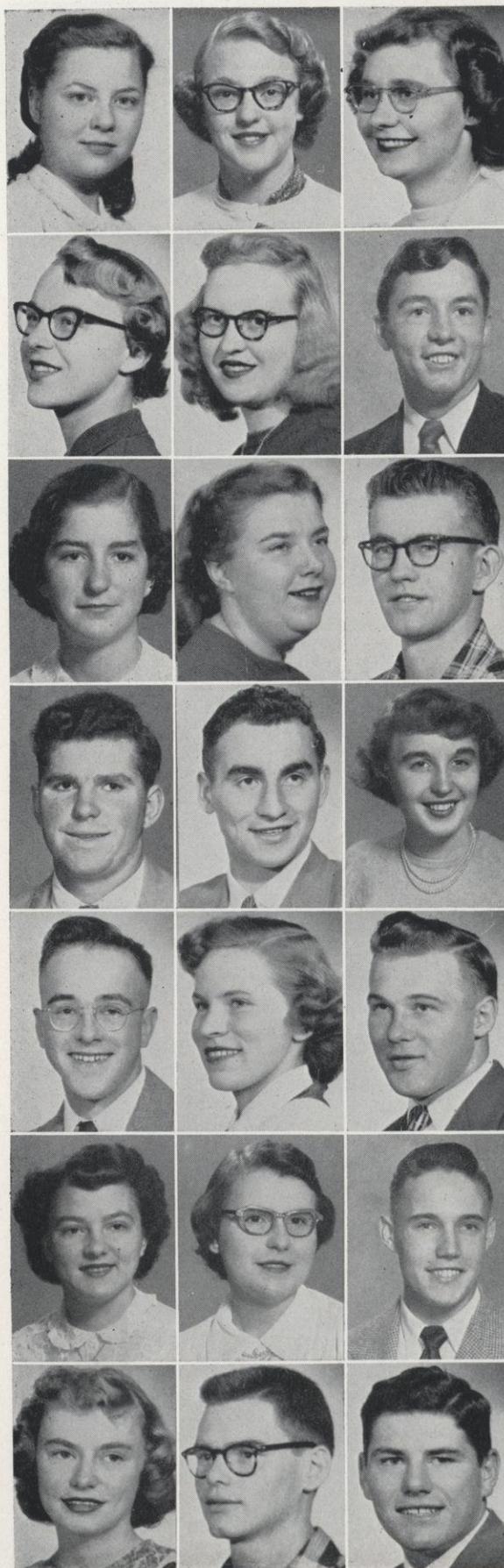
Glenwood City

Arcadia

Hudson

New Richmond

Wheeler



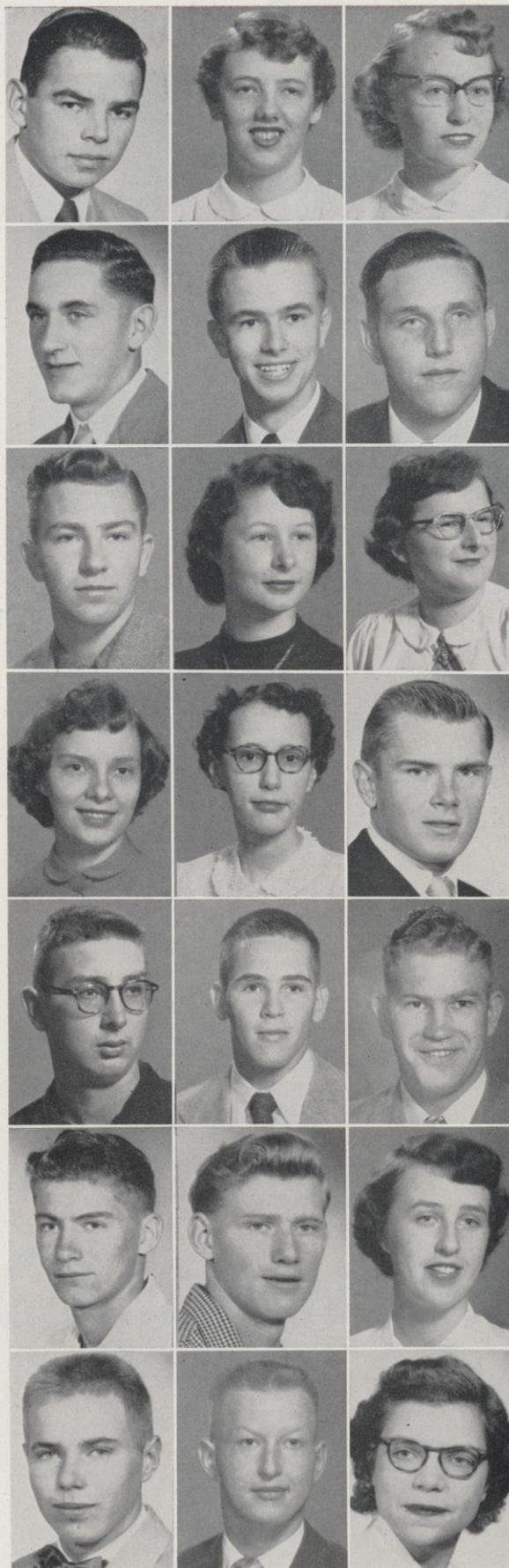


Freshman Class

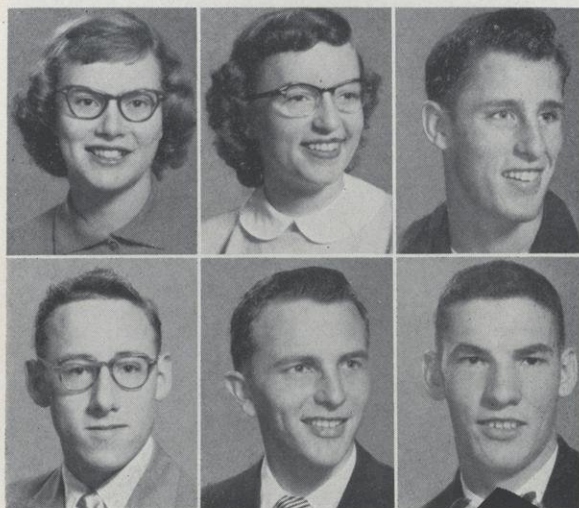
DONALD RICHARDS	River Falls
Unclassified	
CLAIR RICHARDSON	Watertown
Pre-Professional	
WILLIAM ROBINSON	Milwaukee
Agriculture	
RICHARD ROZEHNAL	River Falls
Unclassified	
TROY RUDESILL	Baldwin
Unclassified	
RICHARD RUESCH	Medford
Unclassified	
DARLENE RUHNKE	Hastings, Minn.
Elementary	
CAROL RUNDHAMMER	Star Prairie
Elementary	
GEORGIA RUSSELL	Downing
Elementary	
DORIS SCHAFER	Clayton
Elementary	
LAVERN SCHIER	Granton
Agriculture	
KENNETH SCHUMACHER	Cashton
Unclassified	
LEROY SCHWAN	Osceola
Secondary	
RICHARD SEEKAMP	Baldwin
Secondary	
ANTON SENDELBACH	Cochrane
Agriculture	
JOY SEYFORTH	Ellsworth
Elementary	
RICHARD SHIMEK	Chippewa Falls
Unclassified	
ELDON SKOGEN	Tomah
Agriculture	
JO ANN SLATER	Hudson
Elementary	
ILA SMITH	Glenwood City
Elementary	
GERALD SODERBERG	Thorp
Unclassified	

of 1952

DONALD SOHOLT	Agriculture	Spoooner
ANN SORENSON	Elementary	Spring Valley
SHIRLEY STEHR	Elementary	Balsam Lake
DONALD STEINMETZ	Agriculture	Bloomer
RODNEY STONE	Unclassified	River Falls
VERNON STONE	Agriculture	Amery
ROBERT STRAIN	Secondary	Baldwin
JANET THODE	Secondary	Amery
ARDIS THOMPSON	Elementary	Glenwood City
LOUISE THOMPSON	Secondary	Hammond
MARIAN THOMPSON	Elementary	Ellsworth
JAMES TILLY	Secondary	Fond du Lac
RAY TODD	Unclassified	Shell Lake
ALLAN UPTON	Elementary	Black River Falls
RUSSELL UTGARD	Agriculture	Star Prairie
ARLAN VANDEWATER	Agriculture	Holmen
HERBERT VOSS	Secondary	Sheboygan
MARIAN WALLEVERD	Unclassified	Wilson
JAY WARD	Unclassified	Durand
RICHARD WELLS	Unclassified	River Falls
JANET WENSTAD	Elementary	Star Prairie



Freshman Class of 1952



SUSAN WIFF	Elementary	Spring Valley
CHARLOTTE WILCOX	Elementary	Balsam Lake
ROBERT WOOD	Unclassified	Spring Valley
J. BRYANT WYMAN	Unclassified	River Falls
DONALD ZIMMERMAN	Unclassified	Fond du Lac
HENRY ZYCH	Unclassified	Beardsley, Minn.

CLASS OFFICERS

J. Bryant Wyman
Robert Easton
Marjorie Lundgren
Patricia Fisher

President
Vice President
Secretary
Treasurer

Organizations



Standing: Harkness, Gehn, Mosbaek
Seated: Westerberg, Kittel, Allie, Hanson, Deans, Wyman, Fick, Knieff.

THE STUDENT SENATE

OFFICERS

Jack Hanson
Roger Knieff
Jean Allie
Ernie Mosbaek

President
Vice President
Secretary
Treasurer

MEMBERS

Jean Allie
Margery Deans
Elaine Fick
John Gehn

Jack Hanson
Roger Knieff
Ivan Kittel
Ernie Mosbaek

Ken Nehmer
Duane Westerberg
J. Bryant Wyman

The student governing body at River Falls State College is the Student Senate, consisting of eleven members, seven of which are nominated and elected in May by the entire student body. The other members are the presidents of the classes. The Student Senate acts as a representative body to present students' needs and desires. The aims of the Senate are to promote the best interests of the college and to develop a spirit of co-operation and good fellowship throughout the school.

The editors of the Student Voice and the Meletean are elected by the Student Senate from nominations made by advisers of these publications.



Seated: Bjornstad, Swenson, Haglund, Aebly, Anderson
 Standing: Armstrong, Laramy, Schoedel

THE SOCIAL COMMITTEE

MEMBERS

Marian Aebly
 Margaret Anderson
 Dick Armstrong

Jo Ann Bjornstad
 Dick Laramy
 Marilyn Haglund

Don Schoedel
 Lois Swenson

The Social Committee is a sub-committee of the Student Senate. It makes the arrangements for and takes charge of social functions throughout the year. Every function must be approved by this committee. Members of the Social Committee are appointed by the Student Senate. More dances in the gymnasium have been promoted by the committee this year, and the cafeteria dances on Wednesday nights have been revived.



Sitting: Nelson, Ruemmele, McCollow, Pechacek, Jenson, Stapleton, Ames.
 Standing: Sommerfeld, Bjornstad, Stern, Ruhnke, Theis, Alden, Collins, Narlock.

THE 1952 MELETEAN

Editor
 Associate
 Business Manager
 Sports Editor
 Art Work
 Faculty
 Organizations
 Classes

Seniors
 Juniors
 Sophomores
 Freshmen

Agriculture
 Debate
 Music
 Photography
 Layout
 Typist
 Faculty Adviser

Arlene Pechacek
 Leroy Stern
 John Reque
 Robert Doolittle
 Paul Willink
 Rita Ruemmele, Pat McCollow
 Audrey Swenson, Mary Shannon

Leroy Stern
 Beverly Gaard, Germaine Steen
 Alice Sommerfeld
 Mary Alden, Darlene Ruhnke
 Herbert Tauchen
 Jean Allie
 Eunice Marking
 Clifton Harmann
 Joyce Stapleton, Bill Collins
 Patrick Ferguson
 Dr. Carleton C. Ames



Seated: Luck, Stapleton, Jenson, Collins, Trewartha, Hanson, Wolfe (adviser)
 Standing: Stern, Anderson, Theis, Newville, Ruhnke, Alden, Aebly, Peterson, Geraets, Nelson.

THE STUDENT VOICE

Editor
 Business Manager
 Sports Editor
 Feature Writers

Reporters

Sports Writers

Photographers

Circulation

Proofreader
 Adviser

Bill Collins
 Beverly Ann Jenson
 Bob Doolittle
 John Reque
 Don Trewartha
 Jack Hanson
 Mary Eck
 Marian Aebly
 Alice Luck
 Les Newville
 John Reque
 Pat Tobin
 Gladys Sigvaldson
 John Bowers
 Wayne Otto
 Berkley Larson
 George Theis
 Virginia Thompson
 Carl Sharp
 Clarence Wild
 Clifton Harmann
 George Theis
 Marilyn Peterson
 Gayle Jacobson
 Pat Nelson
 LeRoy Stern
 Wayne Wolfe



Seated: Davee, Noah, Kirkeeng, Miller, Schmidt, Olson, Anderson, Thorne.
 Standing: Mosbaek, Aukema, Hubbard, Melby, Johnson, Newville, Ward, Vollrath, Erickson, Lin-
 nerud, Rupert.

YOUNG MEN'S CHRISTIAN ASSOCIATION

OFFICERS

Raymond Miller
 Alf Kirkeeng
 Keith Schmidt
 Lawrence Pederson
 Bernard L. McCarthy
 Wayne Wolfe

President
 Vice President
 Secretary
 Treasurer
 Advisers

CABINET MEMBERS

George Melby
 Ernest Mosbaek
 Norman Noah
 Larry Vollrath

Alf Kirkeeng
 Raymond Miller
 Keith Schmidt
 Lawrence Pederson

Allan Erickson
 Willis Johnson
 Tom Ingham

YMCA activities began this year with the freshman mixer, which was sponsored jointly with the YMCA and the Newman Club. The group next sponsored "Y" day, which is essentially a membership drive to introduce new members to the YM.

Other activities of the YMCA this year included the joint sponsorship with the YW of the WSSF drive, Thanksgiving, Christmas, and Easter services at local churches, and joint meetings with the YW to discuss marriage and courtship problems.



Seated: H. Peterson, C. Anderson, Smith, R. Davis, A. Johnson, Deans, L. Wiff, Thannum, Tandberg, Wilcox, Steehr, Ruhnke, Dickenson.
 2nd row: A. Peterson Russell, S. Wiff, Seyforth, Haglund, I. Hanson, Dierks, Pabst, Rundhammer, Wenstad, C. Anderson, E. Davis, Bjornstad, Sammons, Lundgren, Miller, Benson.
 3rd row: Martalock, Thompson, Madson, Moen, Kuhn, Dahlberg, Kreuziger, Hahn, Slater, Buckner, Dietzler, Akins (adviser), H. Davis.

YOUNG WOMEN'S CHRISTIAN ASSOCIATION

OFFICERS

Lavona Wiff
 Audrey Johnson
 Mabel Peterson
 Margery Deans
 Dr. Virginia Akins
 Mrs. John Fritzmeier
 Miss Irma Hathorn
 Miss Phyllis Simon

President
 Vice President
 Secretary
 Treasurer
 Advisers

CABINET

Flora Woodruff
 Gen Thannum
 Corinne Tandberg

Donna Jones
 Audrey Swenson
 Ruth Davis

Donna Baringer
 Delores Kreuziger
 Carol Anderson

YWCA activities at River Falls this year began with "Y" day shortly after school began. According to tradition, the YW sponsored the Big-and-Little-Sister Tea, the candlelight dedication service, a series of Bible studies, and the Puff-Pant Prom.

The YW worked jointly with the YM on many projects, which included Vesper Services at Thanksgiving, Christmas, and Easter, the Homecoming float, the Christmas Formal, and the WSSF drive in January.



Seated: Haessly, Peterson, Ruemmele, Esser, Styer, Geraets, Bosman, McCollow.
 2nd Row: Kierstyn, Aebly, Lodermeier, Nelson, Fisher, Feidt, Murphy, Wiskerchen, DeNucci, Ryan, Thode, Backes, Fisler (adviser).
 3rd Row: Czech, Roskos, J. Murphy, Feltes, Shannon, Riley, Eck, Bechel, Schwan, Narlock. Valiga.

THE NEWMAN CLUB

Roy Esser
 Carolyn Styer
 Annette Geraets
 Rita Ruemmele
 Mr. Robert Fisler
 Rev. Henry G. Shaney
 Rev. Phillip Stack

President
 Vice President
 Secretary
 Treasurer
 Adviser
 Chaplins

The purposes of Newman Clubs at non-Catholic schools or colleges are to supplement the work of secular instruction, to give the Catholic students an opportunity to come together and to guide their spiritual, religious, and social life. The Newman Club fosters a spirit of peace, harmony, and fellowship on the campus.

Activities of the Newman Club include meetings on the second and fourth Tuesdays of each month, communion breakfasts and retreats once a term, holy hour once a month, business meetings by the council twice a month, and social meetings once a month.



Seated: Tauchen, Schoedel, Johnson.

Standing: Buchholtz, Postler, Erickson, Greenquist, Fraedrich, Rasmussen, Ames, Thaldorf.

GAMMA DELTA

OFFICERS

Royal Fraedrich
Wayne Otto
Stan Lehman
Harold Heck

President
Vice President
Secretary
Treasurer

The purpose of the local chapter of Gamma Delta is to learn and disseminate Christian knowledge and to improve relationships with other colleges throughout the country.

Gamma Delta, a fraternal organization of Synodical Conference Lutheran students on college campuses, was formed at River Falls in 1950. It maintains headquarters at its house on South Fourth street.



First row: Schmidt, Nelson, Harkness, Easton, Braun, Soderberg.
 Second row: Veith Huff, Barlow, Foukes, Miller, Czech, Rudesill.
 Third row: Minot, Voss, Murphy, Weber, Wood, Oedsma, Laufenberg.

"R" CLUB

The "R" club is made up of men who have received letters in competitive sports at River Falls. The group runs the concessions at all football and basketball games and participates in various other campus activities.

Letter Awards — 1951 - 52

Football

Charles Braun
 Jerry Easton
 Carver Foukes
 Harley Harkness
 Harry Laufenberg
 Manning LeClair
 Larry Miller
 Clair Murphy
 John Oedsma
 Bob Onstad
 Jerry Route
 Troy Rudesill
 George Schneider
 Jack Shield
 Jerry Soderberg
 Vern Steinmetz
 Don Veith
 Herb Voss
 Bob Wood

Spring Sports

Willard Morgan
 Bud Fossen
 Keith Riley
 Glen Hanson
 Bob Salmon
 Don Barlow
 Howard Matthias
 Harlan Nelson
 Dale Kannel
 Clyde Weber
 Bob Houg
 Vern Steinmetz
 Howard Cox
 Art Jevert
 Eldon Hight
 George Stout
 Bill Huff
 Don Veith
 Norman Parker
 John Oedsma
 Reuben Kaiser
 Hugo Leider
 Chuck Beaver
 Eric Von Schweinitz
 Bob Bernet
 Dean Wilkins
 John Mills

Basketball

Roger Kuss
 Jack Shield
 Carver Foukes
 Ray Czech
 Jim Belisle
 Don Barlow
 Zeke Wells
 Bob Williams
 Don Fick
 Jim Saxton



Seated: Seyforth, Allie, Tiller, Jones, Clark, Olson, Larson.

2nd Row: Murphy, Lund, Shannon, Hammelman, Eck, Bjornstad, Boe, Fisher, Dickenson, Lysdahl.

WOMEN'S ATHLETIC ASSOCIATION

OFFICERS

Carol Jones
June Clark
Jean Allie
Beverly Gaard
Marilyn Markel

President
Vice President
Secretary
Treasurer
Adviser

The women's athletic association forms the nucleus which directs the intramural sports activities and carries on an active sports program throughout the year for women. WAA encourages several individual sports. Members are given points for participation in sports.



Seated: Sommerfeld, Thorne, Nelson, Larson, Ladd, Boe, Linnerud, Baringer, Larson.
 2nd Row: Woodruff, Stapleton, Jenson, Anderson, Erickson, Rupert, Olson, Fisher, Bolin.

FALCONAIRE DANCING CLUB

OFFICERS

Daisy Boe
 Donna Jones
 Ardell Linnerud
 Delores Kreuziger

President
 Vice President
 Secretary
 Treasurer

Purpose of the Falconaire Dancing Club is to give students an opportunity to learn and practice international dances. The students have the chance to teach and call folk dances.



Seated: McCollow, Anderson, Ryan, Mulhollam, Fick, Deans, Burman, Helmer.
 Standing: Foster, Ruemmele, Olson, B. Jenson, Stapleton, B. A. Jenson, Wiskerchen, Dopkins, Allie, Ejernstad, Geraets, Peterson.

SIGMA CHI SIGMA

OFFICERS

Olive Mulhollam
 Mary Shannon
 Jean Bjornson
 Elaine Fick
 Mrs. E. H. Kleinpell
 Mrs. C. B. King
 Miss Vera Moss

President
 Vice President
 Secretary
 Treasurer
 Advisers

Sigma Chi Sigma is an honorary sorority for four-year women students promoting service, culture, and sociability among its members. Members are chosen on the basis of scholastic achievement plus high personal qualifications. Of prime importance among Sigma's annual activities is the awarding of the Sigma Chi Sigma scholarship to a worthy freshman girl who is a four-year student.



Seated: Dopkins, Weatherhead, Erickson, Anderson, Russ, Noah, Deans, Sammons.
 Standing: Davis (adviser), Luck, Russell, Kreuziger, Granum, Jenson, Usack, Wiskerchen, Tweit.

MASQUERS

OFFICERS

Peter Russ
 Margaret Anderson
 Thelma Erickson
 Norman Noah
 Dr. Blanche Davis

President
 Vice President
 Secretary
 Treasurer
 Adviser

MASQUERS

The Masquers' organization, founded in 1928, is now completing its twenty-fourth successful year. Objective of the group is to further interest in dramatics, to keep its members informed as to what is being done in the field of present-day dramatics, and to give each member an opportunity to appear in plays as well as to direct them and work on staging.

In the fall the Masquers presented "Aladdin and the Wonderful Lamp." "Romeo and Juliet" was the winter production, and "Winterset", and "The Corn Is Green" were given during the spring term.



Seated: Davis (adviser), Anderson, Armstrong, Ames (adviser), Tweit
Standing: Noah, Russ.

ALPHA PSI OMEGA

OFFICERS

Richard Armstrong
Margaret Anderson
Norman Noah
Dr. Carleton C. Ames
Dr. Blanche Davis

President
Vice President
Secretary-Treasurer
Advisers

Alpha Psi Omega is a national honorary dramatic fraternity for those doing a high standard of work in dramatics. It provides a wider fellowship for students interested in the college theatre. Membership in Alpha Psi Omega is determined by points earned by activity in plays, such as portraying major and minor roles, assistant directing, heading technical committees, prompting, working on stage crews, and serving as officers in Masquers, the college dramatic society.



Seated: Belt, Aebly, Anderson, Helmer, Tauchen; 2nd Row: Hawkins, Amundson, Granum, Thompson, Noah, Isaacson, Dopkins; 3rd Row: Aukema, Ingham, Lotzapoppa, Allie, Fraedrich, Tandberg, Hanson.

DEBATE

Question: "Resolved that the federal government should adopt a permanent program of price and wage control."

The purpose of forensic activities is to stimulate progress and interest in debate, oratory, extemporaneous speaking, and discussion.

BRADLEY UNIVERSITY, Peoria, Illinois, speech meet.

Heather Dopkins and Jack Hanson, affirmative team, won 3 out of 4 debates and received an "excellent rating."

Marion Aebly and Royal Fraedich, negative team, lost 2 out of 2 debates. Margaret Helmer and Royal Fraedich, negative team won 1 out of 2 debates.

"B" Invitational Tournament, River Falls State College.

Eight colleges and universities representing Wisconsin and Minnesota participated, supplying a total of 29 teams. The U. of Minn. won the trophy. Jean Allie placed third on the all-tournament team. River Falls debaters were: Louise Thompson, Richard Aukema, Eugene Isaacson, Jerry Anderson, Corine Tandberg, Royal Frae-

dich, Jean Allie, Norman Noah, Richard Granum, Halbert Belt, James Cerello, and Thomas Ingham.

Annual Speech Meet, Eau Claire State College.

Marion Aebly and Jean Allie won 4 out of 4 debates and received a total score of 59 points. Eugene Isaacson and Herbert Tauchen won and lost 2 debates, earning 44 points. Richard Aukema, and Royal Fraedich won 1 and lost 3 debated, receiving 57 points. Heather Dopkins and Margaret Helmer won 2 and lost 2 debates, earning 53 points. These teams were entered in the "B" division. Jack Hanson and Ambrose Murphy, in "A" division, won 2 and lost 2 debates, earning 61 points.

Northwest Tournament, St. Thomas College, St. Paul, Minn.

Heather Dopkins and Margaret Helmer won 6 and lost 2 debates, with an excellent rating. Jean Allie and Marion Aebly won 5 and lost 3 debates, with an excellent rating. Richard Aukema and Ambrose Murphy won 4 and lost 4 debates, with an excellent rating. Herbert Tauchen and Eugene Isaacson won 2 and lost 6, with a good rating. Sixty teams were entered in the men's division and thirty in the women's division.

Province Tournament, Macalester College, St. Paul, Minnesota.

Representatives of River Falls were Jack Hanson, Ambrose Murphy, Herbert Tauchen, Richard Aukema, Heather

Dopkins, Margaret Helmer, Marion Aebly, Jean Allie, and Royal Fraedrich. The events were debate, oratory and extemporaneous speaking. The extemporaneous speaking topic was "Has the United States assumed its responsibilities as a world leader since World War II?"

**DEGREE OF
FRATERNITY**

Jeanne Myron Ode
Louise Melbye
Oliver Glanzman
Thomas Ronnigan
Louellyn Reiss
William Harris
Keith Wurtz
Glenn Snoeyenbos
Jack Wallace
Les Gaylord
Dean Fenner
William Miller
David Benson
Richard Yde
Rose Marie King
Melvina Norderhaug
Richard Armstrong
William Hayes
Phyllis Hathaway
Robert Schillberg
Reuben Kaiser
John Meulemans
Richard Aukema
Royal Fraedrich
Eugene Isaacson
John Rockman

**DEGREE OF
PROFICIENCY**

Lois Hunter
Donald Martin
Werner Gleiter
Gordon Jackman
Peter Vig
Walter Engler
Martin Lucente
Marlyn Eslinger
Eillen S. De Carufel
William Amundson
Earl Johnson
Dick Vilstrup
James Van Tatenhove
Thomas Ingham
James Cerello
Jean Allie

DEGREE OF HONOR

John Bradley
Charles White
Katherine Lynch
Gerald Splinter
Laurence Gherty
Joyce Leonard Sharp
Norris Crist
Donald Willink
Lois Webb
James Webert
Newton Nelson
Nancy Murray
Fred Olson
Margaret Helmer

**DEGREE OF SPECIAL
DISTINCTION**

Daniel Dykstra
Roman Zorn
Marion E. Hawkins
Frank Sirianni
Loell Larson
Andrew Osborne
Everett Chapman
Walker D. Wyman
Rolf Ordahl
Paul Prucha
Delores Kramschuster
Irene Raawe
Louis Daniel
Margaret McDermott
Jerome Finn
Charles Schillberg
Melvin Steinbron
Jack Hanson
Ernest Gay
Marion Aebly
Ambrose Murphy
Heather Dopkins
Herbert Tauchen

HONORARY MEMBERS

Justin Williams
Jesse H. Ames
Eugene H. Kleinpell
Sponsor: Marion E. Hawkins



Seated: Aebly, Dopkins, Helmer.
 Standing: Tauchen, Vilstrup, Hawkins (adviser), Amundson, Hanson.

PI KAPPA DELTA

OFFICERS

Heather Dopkins
 Marion Aebly
 William Amundson
 Margaret Helmer
 Marion Hawkins

President
 Vice President
 Secretary-Treasurer
 Publicity Manager
 Adviser

Pi Kappa Delta is a national honorary forensic fraternity, with local chapters on college campuses. Objectives of the fraternity are to stimulate progress in and promote inter-collegiate debate, oratory, and public speaking.

The River Falls chapter of Pi Kappa Delta was organized in 1936. It is responsible for the "B" Invitational Debate Tournament held on the campus each year. Membership in the fraternity is granted according to the extent of intercollegiate speech work done. These degrees are the degree of Fraternity, degree of Proficiency, degree of Honor, and the degree of Special Distinction.



Armstrong, Drogemuller, Goodrich, Torgerson, Bowers, Ulander.

STUDENT VETERANS ASSOCIATION

OFFICERS

Don Goodrich
John Mills
Don Torgerson

President
Vice President
Secretary-Treasurer

The Student Veterans Association is an active organization which has contributed to the Homeing and Winter Carnival Celebrations and has taken an interest in all campus affairs. The organization discussed and took action in current veterans' problems both on and off the campus.

The principle aim of the organization is to install a feeling of unity and belonging among the older group on the campus.



Seated: Somerfeld, L. Larson, Rudesill, Ladd, Schweizer, M. Haglund, Roen, Bolin, I. Larson, Ulsrud, Lodermeier, Young, Garnett (adviser).
 Standing: Hanson, Baringer, Woodruff, Nelson, E. Larson, Binkowski, Fisher, Hollerud.

RURAL LIFE CLUB

OFFICERS

Kenneth Roen
 Marilyn Haglund
 Audrey Schweizer
 Marlys Bolin
 Dr. Ray Garnett

President
 Vice President
 Secretary
 Treasurer
 Adviser

The Rural Life Club is an organization which aims to develop in the teacher a keener appreciation and understanding of rural problems. The members of the Rural Life Club are those students taking the two-year course in the training of rural teachers. Membership is voluntary; however, services and values of the organization gain membership from nearly all the students in the department.



Seated: Bjornstad, Sammons. Ryan, L. Swenson, Burman, Mulhollam, Thannum, R. Davis, Aaby, Steen;
 2nd row: Dubbe (adviser), Fiedler, Werner, Herald, M. Peterson, A. Swenson, Aebly, E. Davis, Olson,
 Schaffer, Narlock, Pechacek, H. Peterson;
 3rd row: Ruemmele, Styer, G. Olson, Miller, Kreuziger, Anderson, H. Olson, Goodrich, Tilsner, Eng-
 bretson.

ASSOCIATION FOR CHILDHOOD EDUCATION INTERNATIONAL

OFFICERS

Barbara Burman
 Lois Swenson
 Gen Thannum
 Olive Mulhollam
 Ruth Davis
 Miss Ann Dubbe

President
 Vice President
 Secretary
 Treasurer
 Publicity Manager
 Adviser

The local chapter of the international organization of the Association for Childhood Education is designed to bring into active cooperation all childhood educational interests, to promote the progressive type of education in the primary grades, and to raise the standards of the professional training for the teachers and leaders in that field. All students enrolled in the primary department are eligible for membership.

Highlight of ACEI activities this year was the presentation of a play, "The Indian Captive", on March 21 - 22.



Wiskerchen, Torgerson, Stapleton, Goodrich, Deans.

HONOR SOCIETY

Those students who have attained two and one-half honor points for each credit hour for at least one term are eligible for membership in the Honor Society. Those who have received two and one-fourth honor points for each credit hour and have no grade below a "C" are awarded a gold "R" upon graduation.



Seated: Ryan, Peterson, Sommerfeld, LaBrash, Allie.
 Standing: Ruemmele, Swenson, Hahn, Anderson.

THE COLLEGE WOMEN'S ASSOCIATION

OFFICERS

Helen Peterson
 Jean Allie
 Juliann Ryan
 Susan LaBrash
 Miss Mildred Mitchell
 Dr. Catharine Lieneman

President
 Vice President
 Secretary
 Treasurer
 Advisers

The College Women's Association, organized in 1948, is a self-governing body composed of all college women.

The executive board of the CWA makes and enforces the rules governing all women students, and strives to provide an adequate social and cultural program for all college women. It is composed of the four officers, elected annually, and representatives from each educational division at River Falls, and a chairman chosen from the house presidents. The board functions under the advisorship of a selected faculty adviser and the Dean of Women.



Front row: Feltes, Drewiske, Torgerson, Swanson, Backes.
Back row: Kierstyn, Pratt, Carlson, Foukes, Noah, Beckel.

TOASTMASTERS CLUB

OFFICERS

Fall

Don Torgerson
Bernard Drewiske
Paul Beckel
Carver Foukes
Jerome Peabody
Ernest Wallin
James Kierstyn

Winter

Jerome Peabody
Ernest Wallin
Robert Carlson
Harold Gorr
Paul Beckel
Norman Noah
Don Torgerson

Spring

Ernest Wallin
Norman Erickson
Ronald Backes
Don Stiehm
Harold Gorr
Paul Beckel
Jerome Peabody

President
Vice President
Secretary
Treasurer
Sergeant-at-Arms
Parliamentarian
Deputy Governor

The Toastmasters Club is an organized group of ambitious men who seek to improve themselves in the art of speech, both in conversation and in public address, as a means of increasing their usefulness in business, social, and civic relationships.



Seated: Larson, LaBrash, Rupert, Deans.
 2nd row: Jurgens (adviser), Davee, Wiskerchen, Anderson, Adrian, Wolfe (adviser).
 3rd row: Thorne, Erickson, Fick, Tandberg, Thompson.

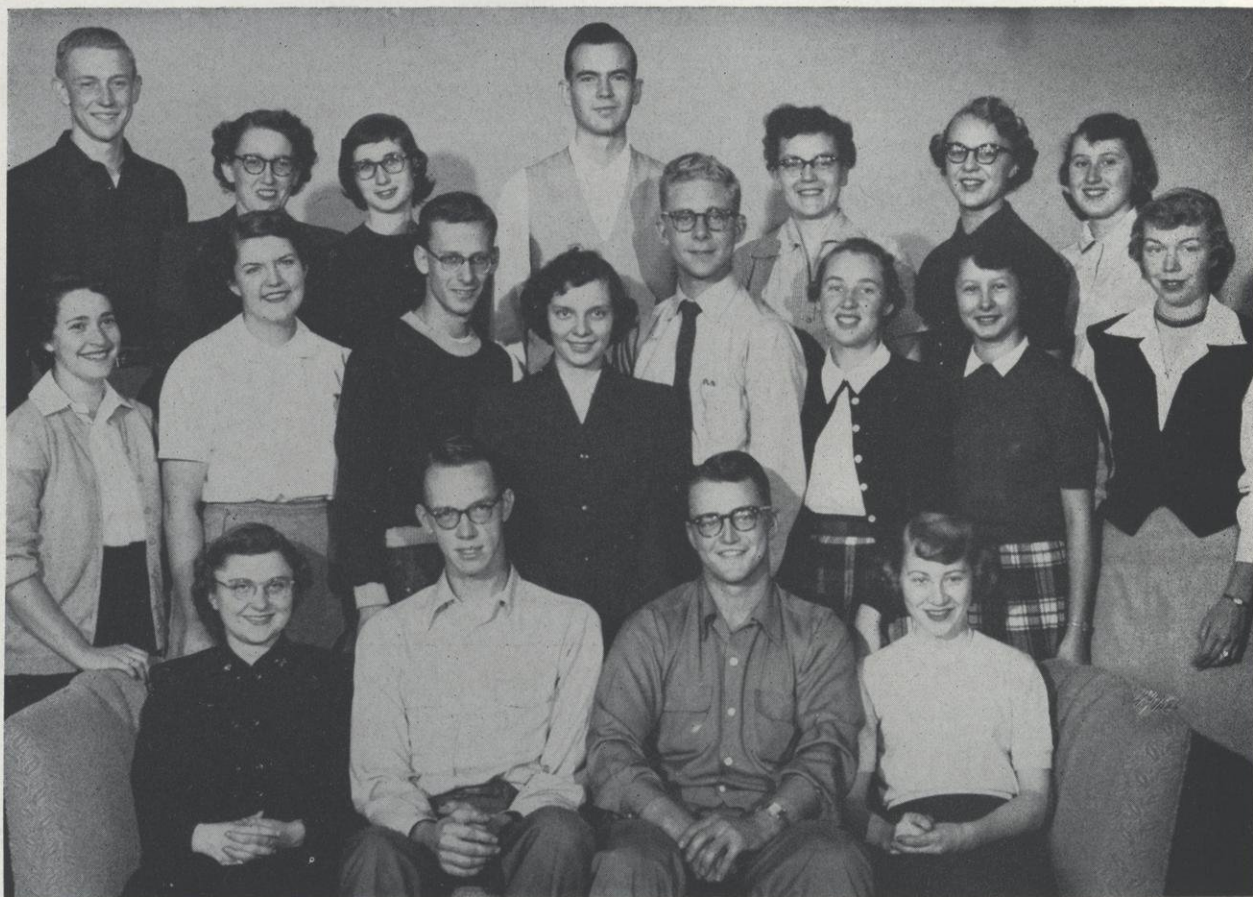
THE LANGUAGE CLUB

OFFICERS

Susan LaBrash
 James Rupert
 Margery Deans
 Dr. Ernst Jurgens
 Wayne Wolte

President
 Vice President
 Secretary-Treasurer
 Advisers

The Language Club, organized by French, German, and Spanish students, is for the purpose of creating a better understanding of other countries by using films, slides, speeches, and folk songs. By bringing the students closer to the foreign countries through these media it is hoped that more interest will be built in other languages and cultures.



Seated: Mulhollam, Willink, Nelson, Jacobson.
 2nd row: Adrian, Fick, Neprud, Thompson, Engebretson, Remund, Thode, Steen.
 3rd row: Koenig, Clark, Luck, Jenson, Lowater, Miller, De Nucci.

MUSIC EDUCATORS NATIONAL CONFERENCE

OFFICERS

Don Nelson
 Olive Mulhollam
 Gayle Jacobson
 B. J. Rozehnal

President
 Vice President
 Secretary-Treasurer
 Adviser

Formed at River Falls in 1950, Music Educators National Conference aims to provide students an opportunity for professional cooperative development while in college. The organization offers a more practical conception of the music education profession as gained from the students' actual participation in programs, discussions, and performance groups.

Any undergraduate music education student is eligible for membership. When a student accepts a teaching position, he is transferred to a full, active MENC membership status.



Seated: D. Foley, McLaughlin (adviser), Geraets, P. Gaustad, Laramy, Foukes, Foster, Anderson, Riley, Pratt.
 2nd row: J. Swanson, Lium, Hoffman, R. Swanson, Westerberg, S. Swanson, Amcs, Stevens, D. Rozehnal, Henderson, Pechacek, Gueldner, Slind.
 3rd row: Mott, Green, Siebold, Anderson. McLaughlin, Wells, Fick, Stone, Schneider, Dietsche, Rivard, Schmidt, Landberg.

MATH CLUB

OFFICERS

Carver Foukes
 Richard Laramy
 Joe Anderson
 John Shield
 Ruth Foster
 Paul Gaustad
 James J. McLaughlin

President
 Vice President
 Vice President
 Vice President
 Secretary
 Treasurer
 Adviser

The Mathematics Club is an active organization which gives to students interested in mathematics an opportunity to discuss topics and problems to broaden their knowledge of mathematics. Programs are conducted by the members of the club every two weeks. Membership is open to those students taking mathematics majors or minors.



Seated: Wyman, Meyer, Wright, Olson, Otto Smith, Laramy.

Standing: Stone, Wolfe, Aaby, Moss, Geraets, Akins, Fick, VandeBerg, Ingels, Andrews, Usack, Gaustad; Krueger, Braun, Johnson, Perry, Westerberg, McLaughlin, Wallendal, McLaughlin.

KAPPA DELTA PI

OFFICERS

Wayne Otto
Richard Laramy
Ramona Meyer
Genevieve Olson
Peggy Smith
Dr. Walker D. Wyman

President
Vice President
Secretary
Treasurer
Historian
Adviser

Kappa Delta Pi is a national honorary scholastic fraternity open only to juniors and seniors who are preparing for teaching and who rank scholastically in the upper quartile of the school.

The Eta Lambda chapter of Kappa Delta Pi was organized on the River Falls campus in February, 1952. Members were initiated at a banquet held at Glen Park lodge on February 15. Dr. Frank L. Wright, executive president of Kappa Delta Pi and professor at Washington University, St. Louis, was in charge of the ceremonies.

WHO'S WHO IN AMERICAN COLLEGES AND UNIVERSITIES

"Who's Who in American Colleges and Universities" is a national collegiate publication. Eleven seniors have been chosen this year to represent RIVER FALLS STATE COLLEGE in the annual publication. To be a representative a student must be a junior or a senior. Students are selected on the basis of high scholarship and their participation and contributions to student activities. A quota for each college is established according to enrollment.

RIVER FALLS REPRESENTATIVES IN THE 1952 "WHO'S WHO"

Gordon R. Anderson

Joseph A. Anderson

Mary L. Eck

Elaine M. Fick

Carver C. Fouks

Jack W. Hanson

Margie I. Lund

Ernest J. Mosbaek

Helen E. Peterson

Joyce C. Stapleton

Richard H. Vilstrup



Front row: Benson, Haessly, Adrian, G. Jacobson, Wood, Doolittle, Remund, E. Davis, Thompson, Thode, Greene, Wilcox, Nordby, Sauerman, Lundgren, LaBrash, Martalock, Mu'hollam, King (director);
 Second row: Alden, Burman, Haglund, Smith, H. Davis, Jones, Steen, Marking, Olson, Erickson, Sorenson, Swenson, Miller, Fick, Luck, Bjornstad, Moen.
 Third row: Vollrath, Neprud, D. Lium, Strain, Aukema, Engebretson, Wingert, Willink, Paschall, Johnson, Melby, J. Jacobson, Gaulke.
 Fourth row: Rydmark, Nelson, Koenig, Lovaas, Jensen, Polzin, Landberg, B. Lium, Linnerud, Connelly, Wyman, Davee, Dopkins.

A CAPELLA CHOIR

OFFICERS

Paul Willink
 Robert Engebretson
 Lois Swenson
 Tenny Neprud
 Genevieve Olson
 Olive Mulhollam

President
 Business Manager
 Secretary
 Librarian
 Publicity
 Accompanist

Personnel

First Soprano

Jean Adrian
 Eleanor Davis
 Helen Davis
 Mary Doolittle
 Joan Grandinetti
 Marilyn Haglund
 Gayle Jacobson
 Donna Jones
 Margaret Remund
 Germeine Steen
 Mary Wood

First Tenor

Wayne Gaulke
 James Jacobson
 George Melby
 Earl Paschall

Second Soprano

Mary Alden
 Janis Benson
 Barbara Burman
 Jackie Greene
 Mary Jane Haessly
 Susan LaBrash
 Marlene Martalock
 Ila Smith
 Janet Thode
 Louise Thompson

Second Tenor

Charles Connelly
 John Davee
 Dale Dopkins
 Ardell Linnerud
 Bryant Wyman

First Alto

Jo Ann Bjornstad
 Marjorie Lundgren
 Eunice Marking
 Janice Moen
 Lorraine Nordby
 Genevieve Olson
 Charlotte Wilcox

First Bass

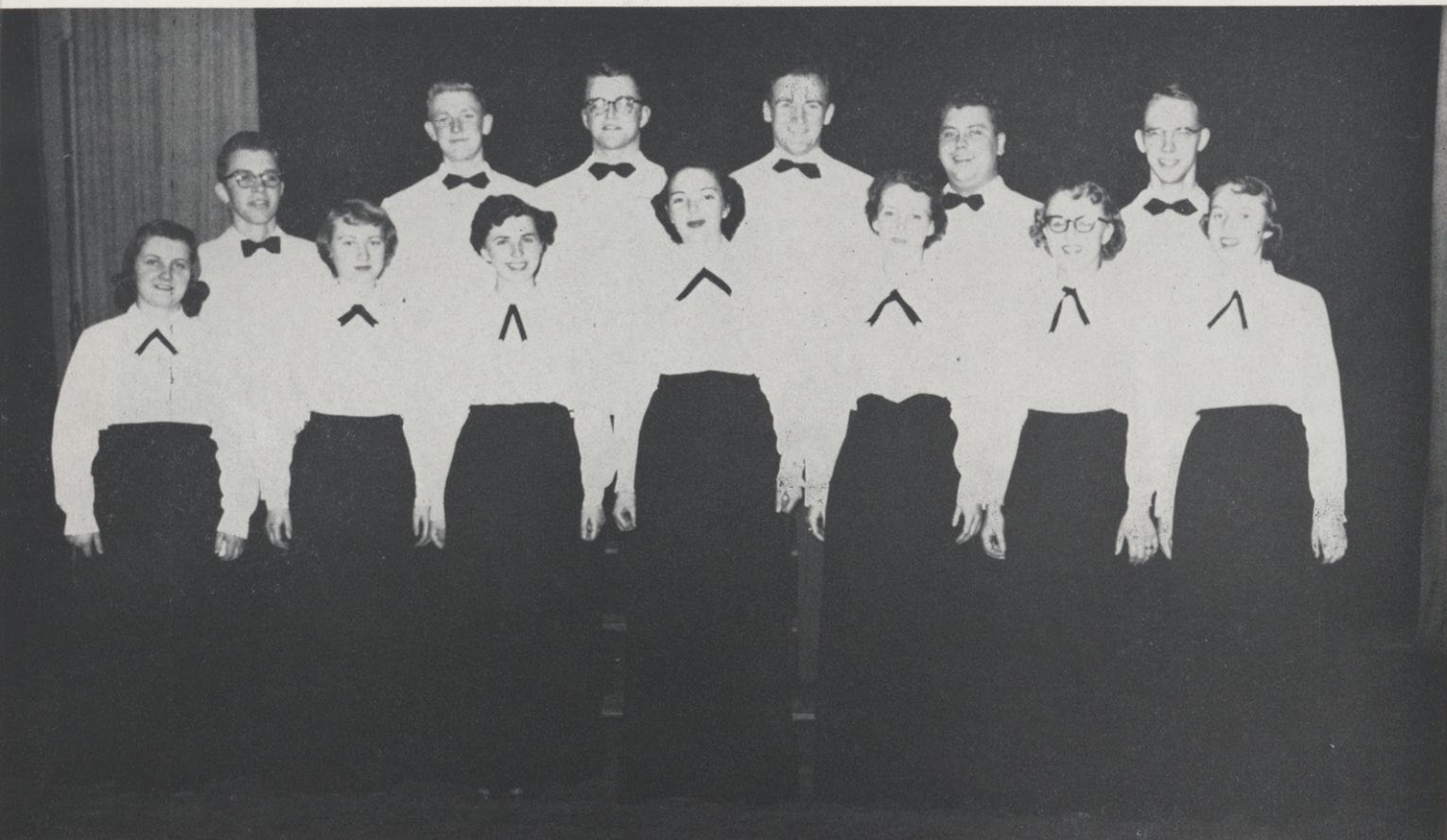
Richard Aukema
 Robert Engebretson
 Lyle Johnson
 Larry Vollrath
 Paul Willink
 Francis Wingert

Second Alto

Thelma Erickson
 Elaine Fick
 Alice Luck
 Kathleen Miller
 Ann Sorenson
 Lois Swenson

Second Bass

Robert Jensen
 Robert Koenig
 Donald Landberg
 Bernard Lium
 Dale Lium
 Arvin Lovaas
 Don Nelson
 Tenny Neprud
 Delmar Polzin
 Allan Rydmark
 Robert Strain



First row: G. Jacobson, Remund. Swenson, Marking, Miller, LaBrash, Alden.
Second row: Polzin, Koenig, Willink, Nelson, J. Jacobson.

FOLK SINGERS

The Folk Singers are a group of thirteen members from the a capella choir who have organized for the purpose of singing the traditional folk tunes of music. The group sings at choir concerts and also for special occasions. The director is Chauncey B. King.



CONCERT BAND

OFFICERS

James Jacobson
Paul Willink
Juliann Ryan
Nicholas Jadinak

President
Business Manager
Secretary
Director

Personnel

Flute

Erna Matson

Oboe

Jean Adrian

Clarinets

Helen Werner
Olive Mulhollam
Juliann Ryan
Louise Thompson
Mildred Narlock
Norma Dierks
John Davee
Roger Knieff
Robert Engebretson
Wayne Gaulke

Saxaphones

Joan Binkowski
Beverly DeNucci
Marlys Bolin
Elaine Fick
Jim VandeBerg

Cornets

Robert Strain
Kathy Miller
Annette Geraets
Richard Navarre
Robert Koenig

French Horns

Marjorie Lundgren
Marilyn Ostness
Janet Wenstad
Carol Rundhammer
Mary Murphy

Baritones

June Clark
Royal Fraedrich
Richard Rozehnal

Trombones

Paul Willink
Tenny Neprud
John Foss

Basses

James Jacobson
Philip Esswein

Percussion

Don Nelson
Dean Thorne
Clifton Harmann
Joan Grandinetti



Wyman, Rozehnal, Wehrwein, Jadinak, Sabottka, Jurgens

THE TOONFUL TUTORS

Not really an organization, but certainly an institution on the campus, are the "TOONFUL TUTORS," eight college and high school faculty members who organized as the dance band for the "Faculty Frolics" last spring and weren't allowed to disband. The "Tutors" play for many of the dances held on the campus.

Faculty members who play with the "Tutors" include: Dr. Walker D. Wyman, on the drums; Dr. Carleton C. Ames on the trombone; Robert Kline on the cornet; Harley Wehrwein, pianist; B. J. Rozehnal, violinist; Nicholas Jadinak, violinist; Dr. Ernst Jurgens on the bass viol; and John Sabottka of the high school, violinist.



SITZMARKER SKI CLUB

OFFICERS

Richard Rozehnal
Jarvis Pratt
Donald Landberg
T. E. Thoreson

President
Vice President
Business Manager
Adviser

New on the campus this year is the Sitzmarker Ski Club, organized during Winter Term by a group of skiing enthusiasts. Lessons for beginners, skiing exhibitions, and trips to nearby ski resorts were featured during the skiing season. The Sitzmarker Ski Club also sponsored the skiing events at the Winter Carnival in January, the downhill, cross country, slalom, and jumping races.

The Department of Agricultural Education



Mr. Arthur N. Johnson

One of the men responsible for the excellent reputation of River Falls State College as an agricultural school is Mr. Arthur N. Johnson. He received his bachelor's degree from the University of Wisconsin in 1915 and received his master's degree from Iowa State College at Ames, Iowa, in 1930. Mr. Johnson has also taken advanced work in animal and dairy husbandry at the University of Minnesota.

Since coming to River Falls in 1919 after his discharge from the army, Mr. Johnson has been head of the animal husbandry department. In addition to teaching he managed the college farm from 1919 to 1949, and has been largely responsible for its improvement and success.

In cooperation with Mr. John May, head of the agricultural education department, Mr. Johnson has aided in the establishment of the reputation of River Falls as an outstanding agricultural college.



Seated: Roskos, Feidt, A. Johnson, Ulander, Carlson;
 Standing: Nelson, McCarty, Hubbard, W. Johnson, Kittel, Esser, Rasmussen, Braun, Drewiske.

FUTURE FARMERS OF AMERICA

OFFICERS

Regular

Arnold Johnson
 Frank Roskos
 Francis Feidt
 John Ulander
 Robert Carlson
 Harlan Nelson
 J. M. May

Regular

Gordon Anderson
 Ernest Wallin
 Ed Burger
 George Melby
 Jerry Hytry
 Wayne Nelson
 J. M. May

First Half Year

President
 Vice President
 Secretary
 Treasurer
 Reporter
 Sentinel
 Adviser

Second Half Year

President
 Vice President
 Secretary
 Treasurer
 Reporter
 Sentinel
 Adviser

Associate

Ivan Kittel
 Omar Hubbard
 Howard McCarty
 Duane Rasmussen
 Charles Braun
 Willis Johnson
 Roy Esser

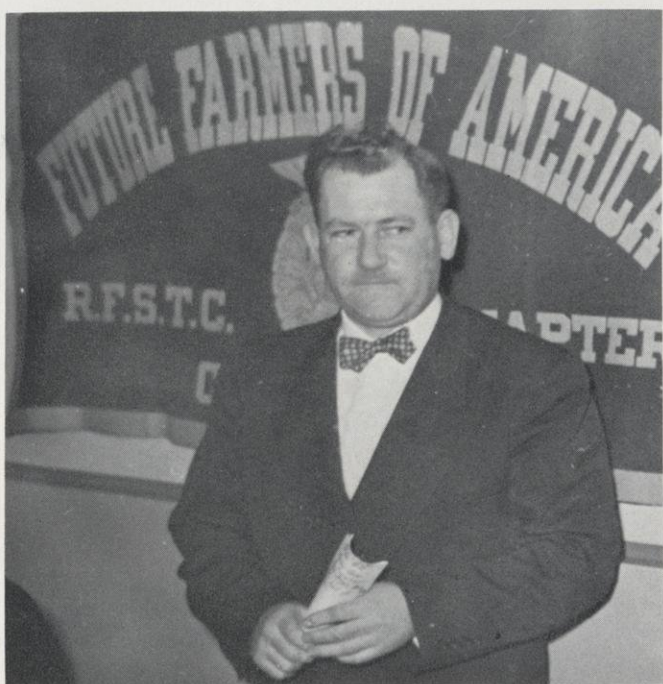
Associate

Norman Erickson
 Charles Braun
 Alf Kirkeeng
 Lloyd Feltes
 Don Schoedel
 Dale Nestingen
 Ernest Mosbaek

The River Falls collegiate chapter of the Future Farmers of America was organized in 1935. Its purpose is to train and develop advisers and leaders for high school FFA organizations.

In addition to other activities, the FFA sponsors a rural school fair on the campus each year. This year over twenty schools participated in the fair — the largest number to date. Other activities included sponsorship of the homecoming queen, a float for the parade, and supplying the torches for the snake dance and bonfire.

Highlight of the year was the FFA's annual banquet, at which Louis Zahradka, a graduate of RFSC, was principal speaker. At the close of the year a picnic was held at the city park and the officers for the following year were elected.



FFA ACTIVITIES

Among the many social activities the Future Farmers of America sponsored during the last year were the FFA Annual Banquet (above), at which Louis Zahradka (left) was principal speaker, and the annual Talent Show (below).

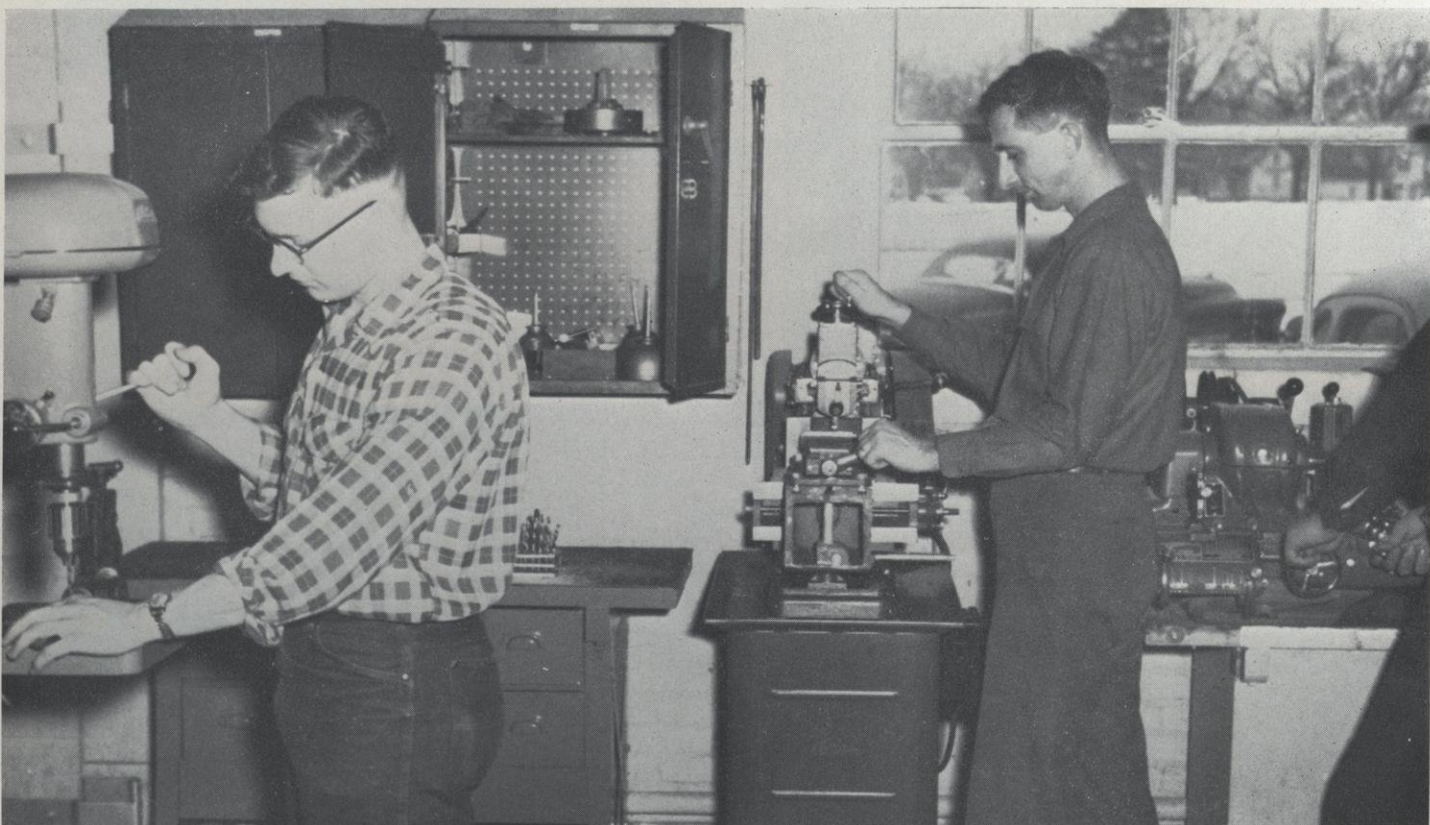




New Engineering Drawing Board



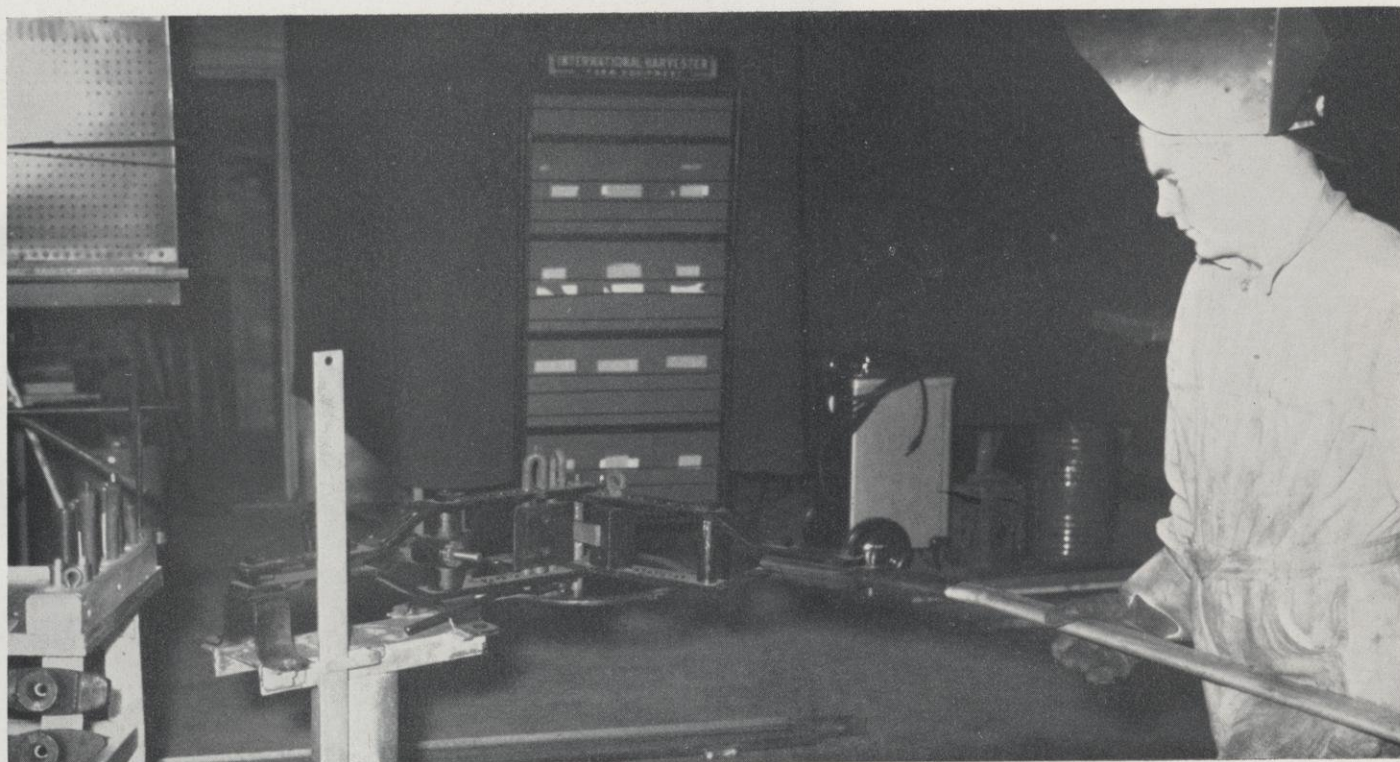
New Power Saw



New Metal Lathe and Shaper

Over \$15,000 worth of new equipment was installed in the industrial arts building in 1952, and is being put to good use by agriculture and industrial arts students.

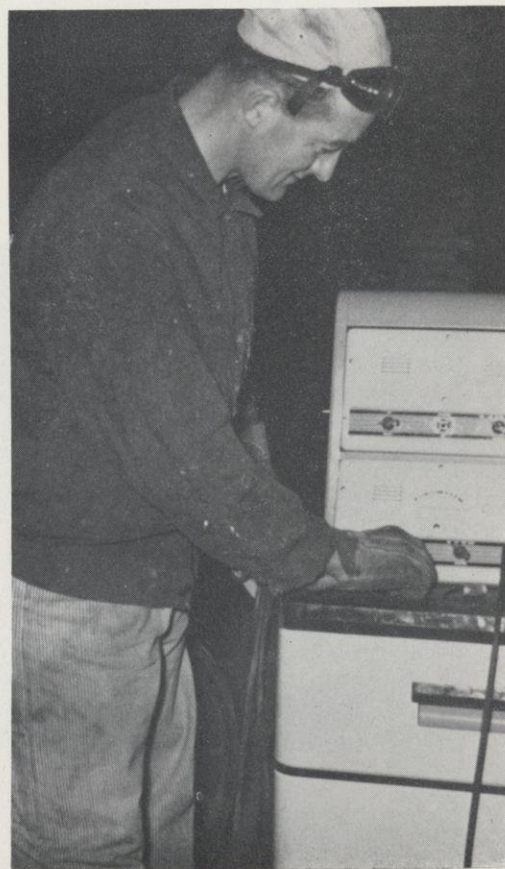
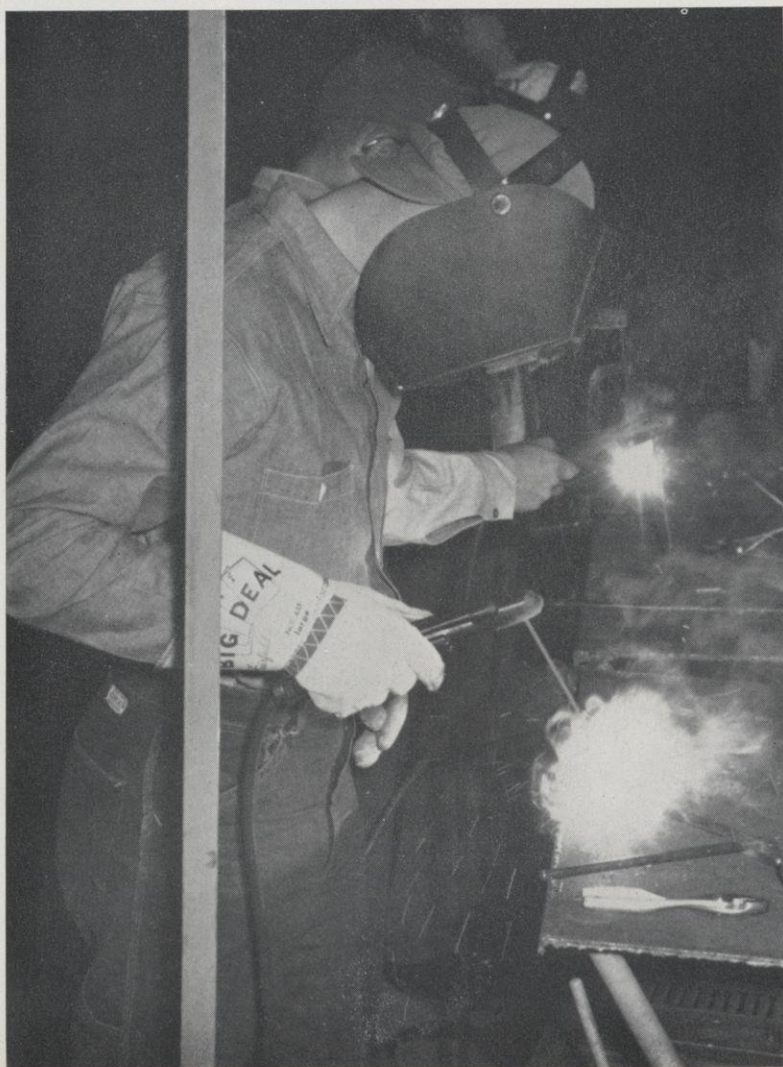
Using The New Equipment



Metal Bending Device (above)

Welding Equipment (Left)

Motor Tester (Below)



HATHORN



OFFICERS

Elaine Fick
Marilyn Peterson
Marion Wallesverd
Kathy Miller
Mary Jane Haessly
Mildred Mitchell

President
Vice President
Secretary-Treasurer
Publicity
Historian
House Mother

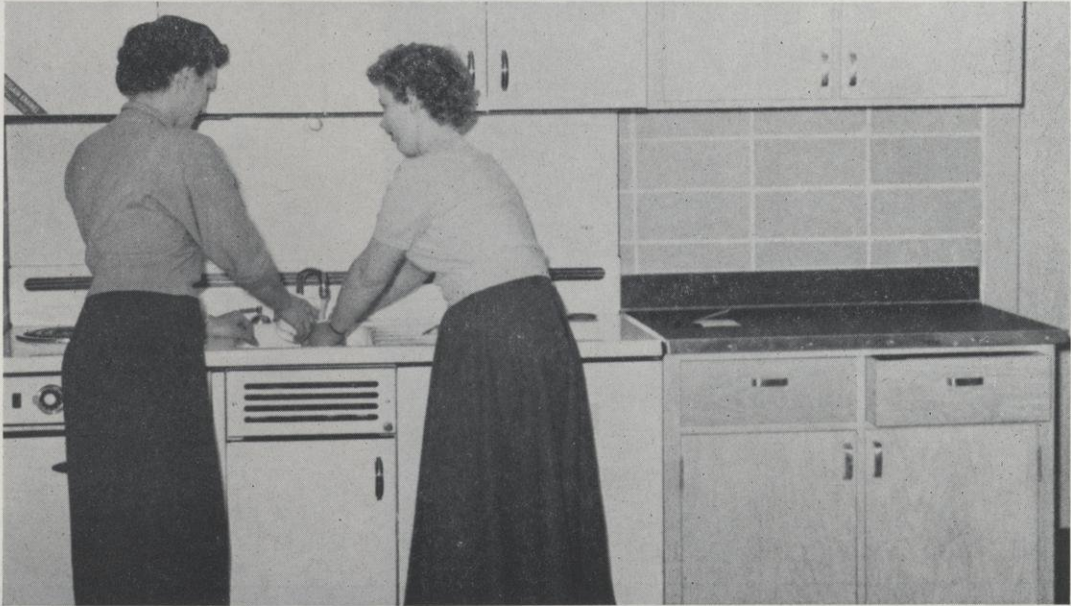
HALL



Photo Courtesy of St. Paul Pioneer Press



Photo courtesy of St. Paul Pioneer Press



Activities

CHEERLEADERS



Bottom row: Stern, Ladd, Suckerman, Fisher;
Second row: Thompson, Wiskerchen;
Top: Grinley.

In no small degree did the small but important organization, the cheerleaders, contribute to the pleasure and success of the River Falls State College athletics, by looking after the conditions of the team on the one hand and the pep of the students on the other. Let's turn the tide and give the fifteen rahs for them!

1951 FOOTBALL SQUAD



First row: Shield, Onstad, Hanson, Wood, Harkness
 Second row: Miller, Thompson, Shyer, Helberg, Soderberg, Braun
 Third row: Rudesill, Route, Schwan, Owen, Foukes, Anderson
 Fourth row: Carlson, Grabon, Steinmetz, Easton, Porter
 Fifth row: Erickson, Murphy, LeClaire, Oedsma, Voss, Corcoran, Theis
 Sixth row: Huff, Schmidt, Hoy, Belfiori, Jevert

Results of the Season

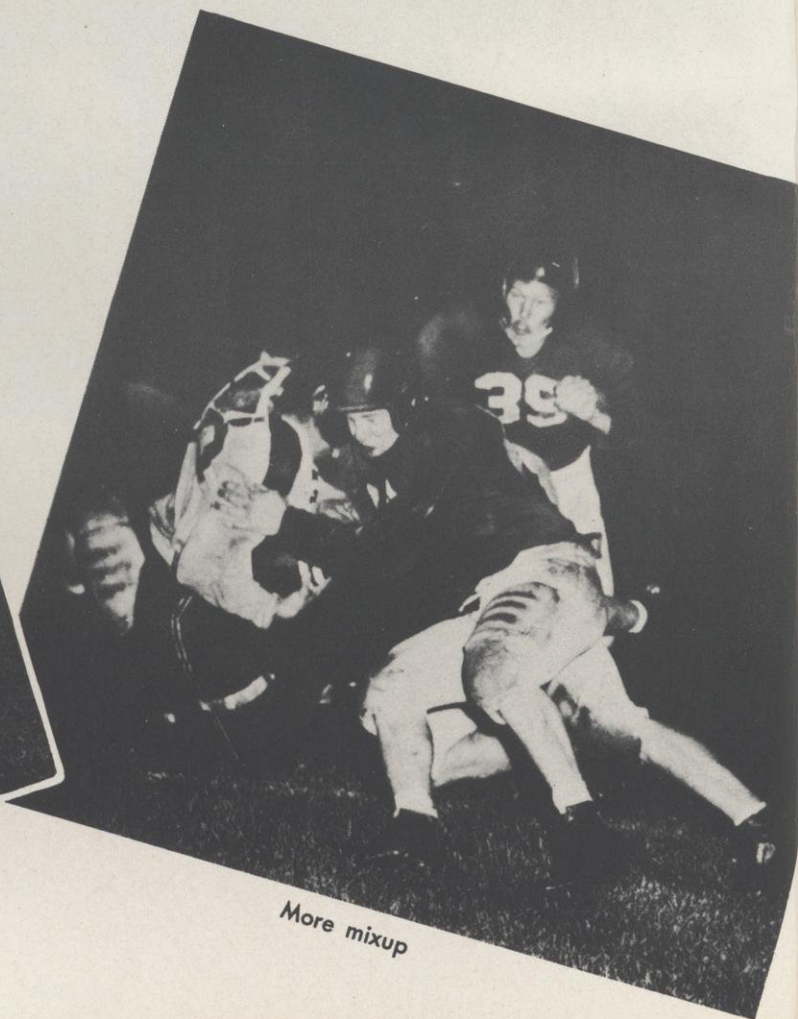
River Falls 7	Augsburg 0	River Falls 13	Eau Claire 0
River Falls 26	Winona 0	River Falls 7	Stevens Point 7
River Falls 14	Superior 27	River Falls 0	Stout 0
River Falls 14	La Crosse 32	River Falls 0	Milwaukee 0



Onstad's down



Mixup



More mixup

RIVER FALLS 7 AUGSBURG 0

Phil Belfiori's River Falls footballmen, sparked by a galaxy of talented freshmen stars, officially opened the 1951 grid campaign with a 7 to 0 victory over Augsburg at Ramer Field.

Clair Murphy, frosh fullback, punched across from the one-yard line after being held for no gain in his first attempt and River Falls fell back with a 7 to 0 advantage as Marv Schueffner added the extra point by placement.

RIVER FALLS 26 WINONA 0

Clair Murphy got his Irish up the following weekend as the Falcons rolled to their second straight win at the expense of hapless Winona Teachers 26 to 0. Murphy grabbed four touchdowns to write his name on the top of the individual scoring department.

Vern Steinmetz set up the first counter on an interception on Winona's 15-yard stripe. But Marv Schueffner added his share of yardage with runs of 60 and 44 yards as the Falcons rolled to 18 first downs against 11 for their Minnesota opposition.

RIVER FALLS 14 SUPERIOR 27

Freshman Murphy continued his upperclass ideas the following week but Superior had some ideas of their own and River Falls suffered its first setback at the hands of the Yellowjackets 27 to 14.

Outplayed in the statistical department, River Falls rolled in spurts and starts with seven freshmen earning starting booths for a varsity assignment. Bob Onstad collected the Falls' other tally on a 55-yard pass from Harley Harkness to end the scoring.

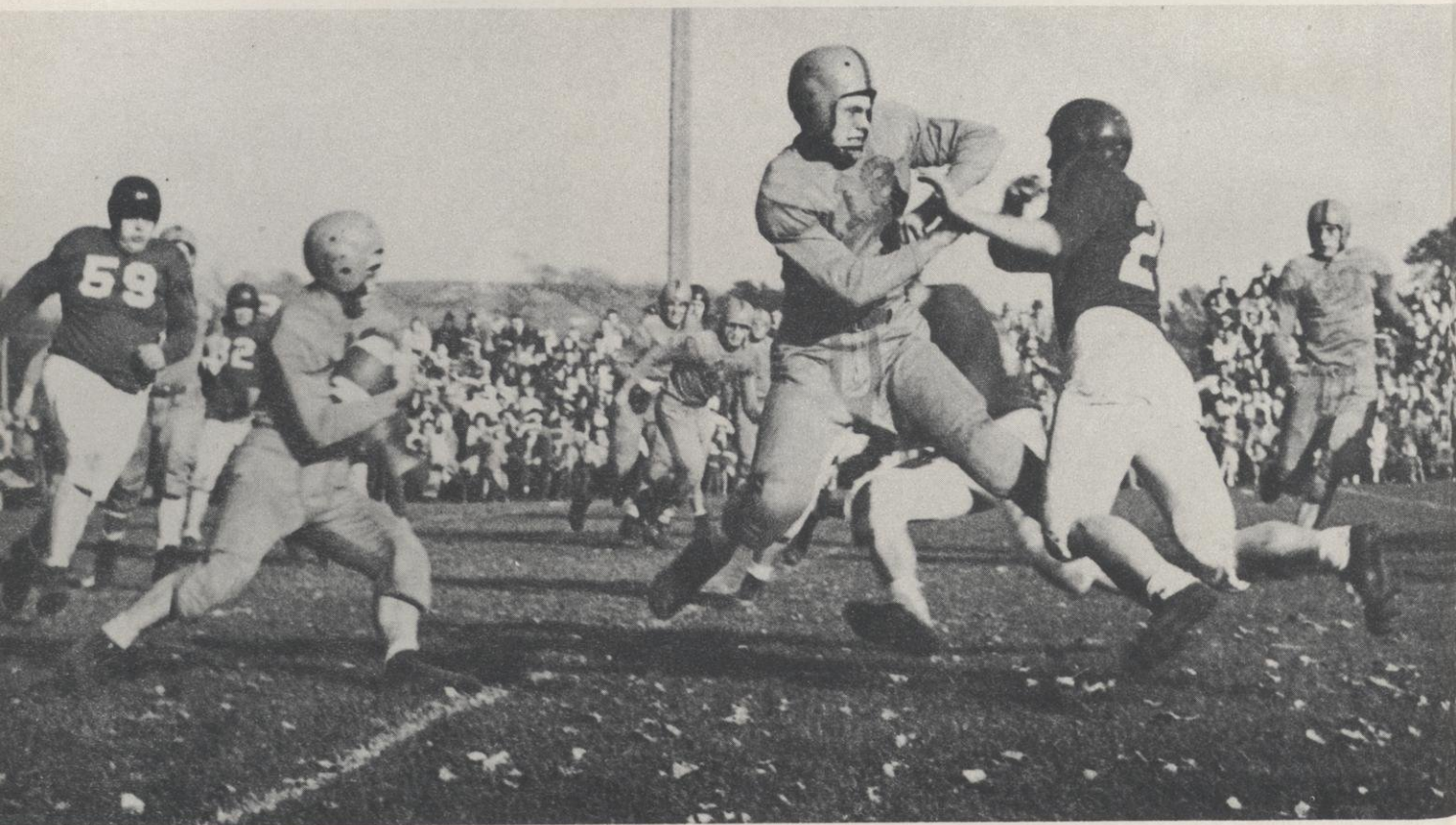
RIVER FALLS 14 LA CROSSE 32

River Falls met La Crosse the next week and limped off the field with their second conference loss—this time at the hands of last year's Conference Champions, 32 to 14.

Combining two long runs and two Falcon fumbles, La Crosse threw the scoring door wide open and walked into the end zone with four touchdowns to give River Falls an even split on games played, two losses in conference play. Murphy drove off tackle from the two-yard line in the second quarter for River Falls' first score and added another touchdown in the final period with a two-yard plunge over center.



Harkness drives in



Stevens Point on the offense

RIVER FALLS 13 EAU CLAIRE 0

But River Falls bounced back in the win column against Eau Claire with a 13 to 0 victory. Jerry Route and Murphy grabbed the scoring spotlight for the Falls' first conference win.

Route connected with an aerial to Virg Miller for the Falcon first score and Murphy took the stage in the next quarter with a drive from the four-yard line into the end-zone. Harkness set the stage for both touchdowns with interceptions on the BlueGolds' 15 and 22 yard marks.

RIVER FALLS 7 STEVENS POINT 7

Back in the business again and operating from the same old Ramer Field stand, the Falcons battled to a 7-7 tie against Stevens Point the following week during Homecoming festivities.

Norb Miller accounted for the lone Pointers' score on a dazzling end sweep, visiting the end zone from his own 26-yard line. Bob Onstad injured his shoulder during the game after romping 75 yards on an aerial from Harkness for the lone Falls score. Steinmetz converted the extra point by placement.

RIVER FALLS 0 STOUT 39

Stout set up a Dad's Day exhibition with a 39 to 0 pasting over the Fallsmen in the Falcons' final home appearance.

Both teams fielded eleven men, wore helmets and jerseys and spit on their hands in the customary manner during each huddle. Further comparison was impossible. Stout was overmanned, full of experience and superlative.

RIVER FALLS 0 MILWAUKEE 0

River Falls and Milwaukee State College battled to a 0-0 tie at the home of the Brewers to end the Falls football calendar during an arctic snowstorm with near zero temperatures.

Playing their final game for River Falls were Jack Shield, quarterback, Harley Harkness, left half, Harry Laufenberg, center, and Carver Foukes at end.

Homecoming Queen

Queen Genevieve Olson



H
O
M
E
C
O
M
I
N
G

Beverly Jensen



A
T
T
E
N
D
A
N
T
S



Beverly Peterson



Marion Aebly



CWA Float



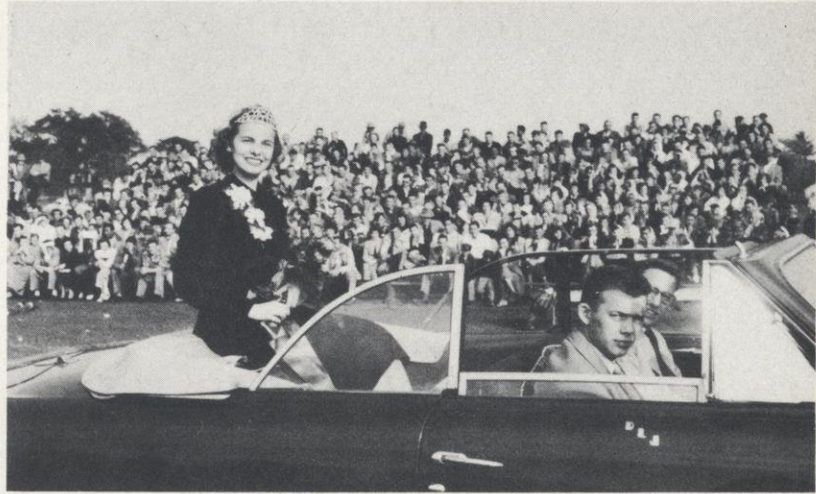
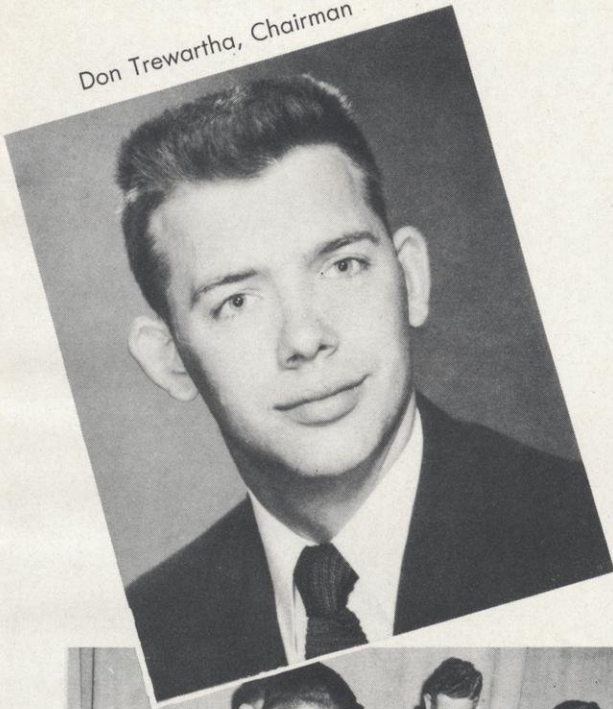
Queen's Float



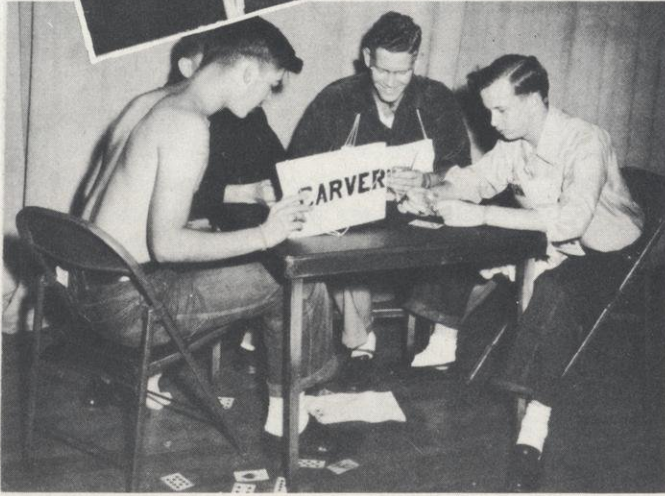
Choir's First Prize Float

"Disappoint Stevens Point"

Don Trewartha, Chairman

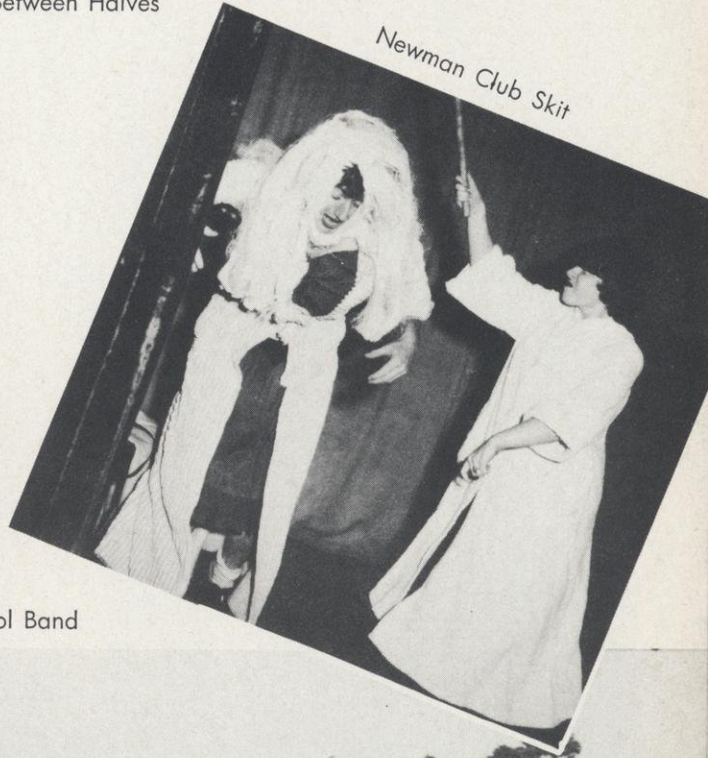


Between Halves

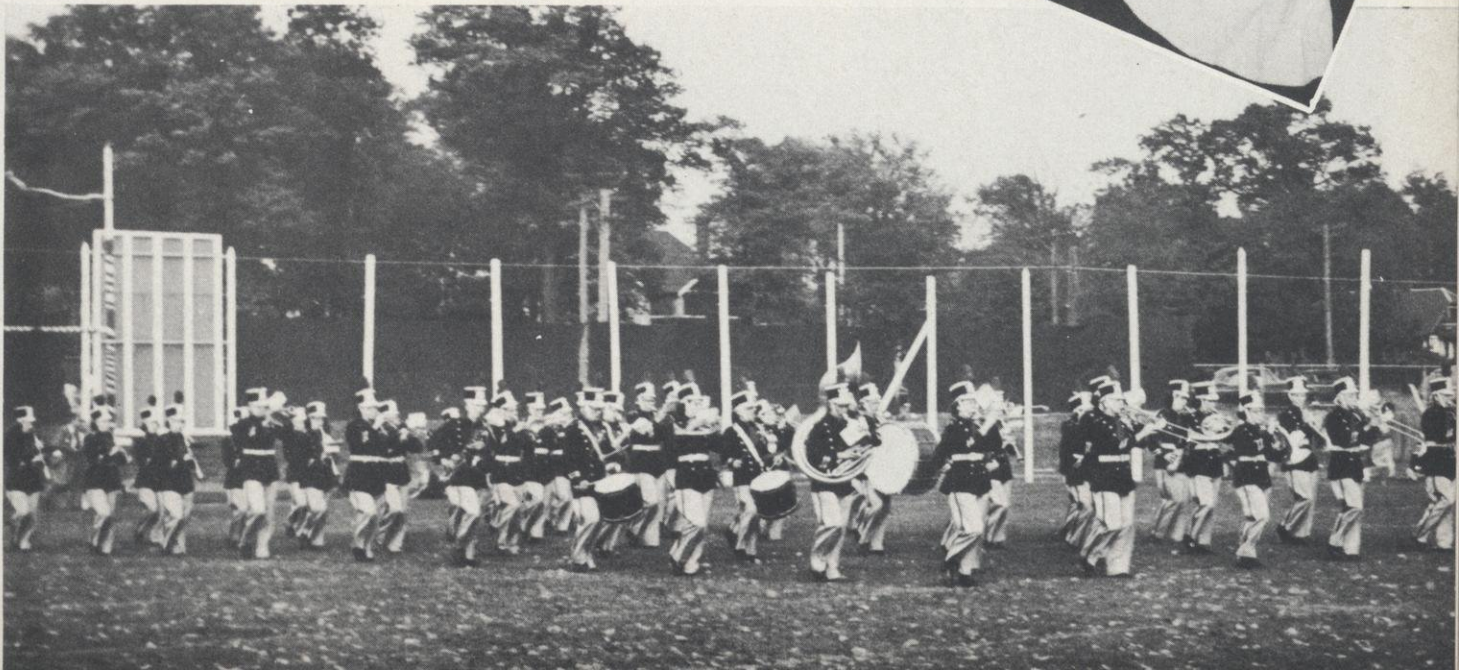


Freshmen Skit

River Falls High School Band



Newman Club Skit





Roger Kuss, Winner of Helms Athletic Foundation Award

Roger Kuss, River Falls State College basketball center, was named to the 1951 Official NAIB All-American second team.

Kuss averaged 27 points per game during the season. He broke two conference records during the year, making 52 points in a single game against Eau Claire State College, and netting 384 points for the season.

Helms Athletic Foundation each year chooses a first, second, and third All American team. Kuss of River Falls and Ron Bontemps of Beloit were the only Wisconsin players chosen.

ROGER KUSS

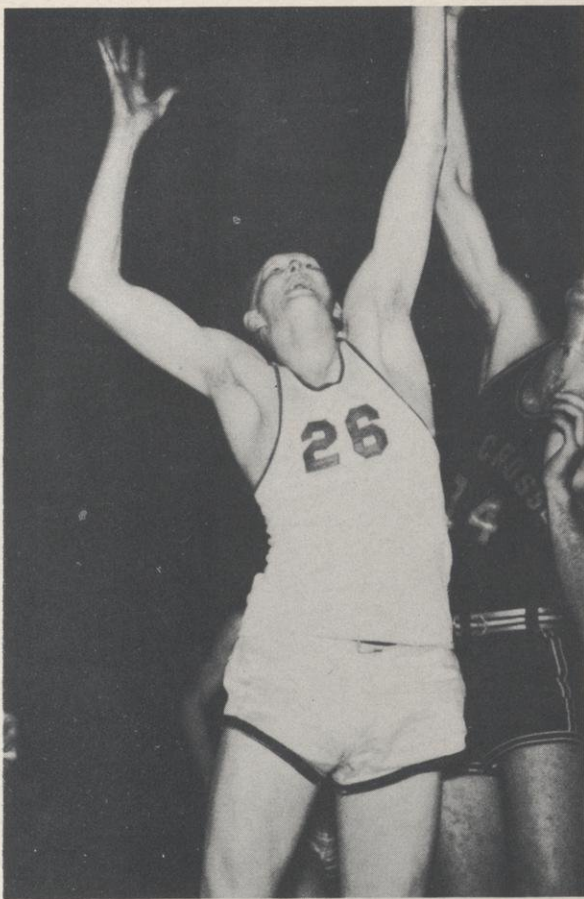
1951-52 BASKETBALL



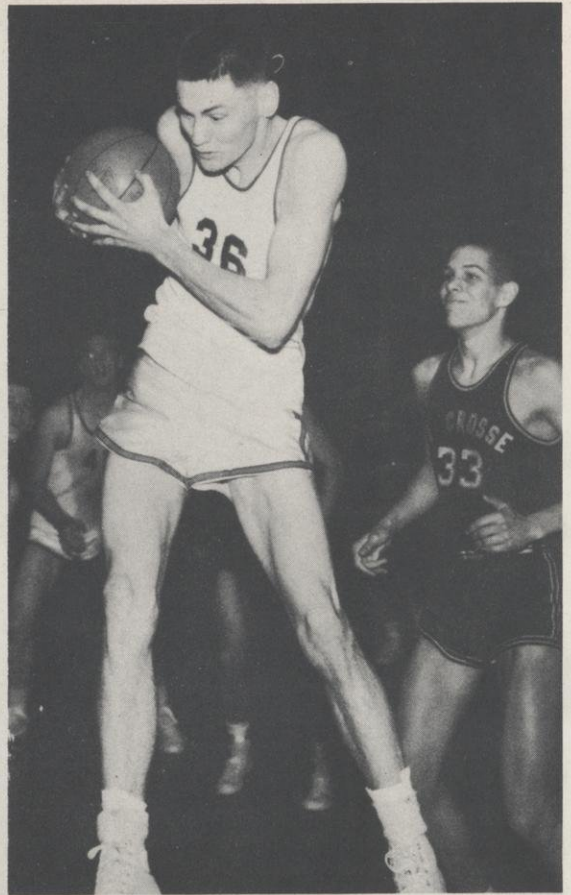
Front row: Williams, Czech, Mills, Kuss, Foukes, Shield, Saxton
Back row: Huff (manager), Barlow, Wells, Krause, Fick, Gehn, Belisle, Coach Hoy

RESULTS OF THE SEASON

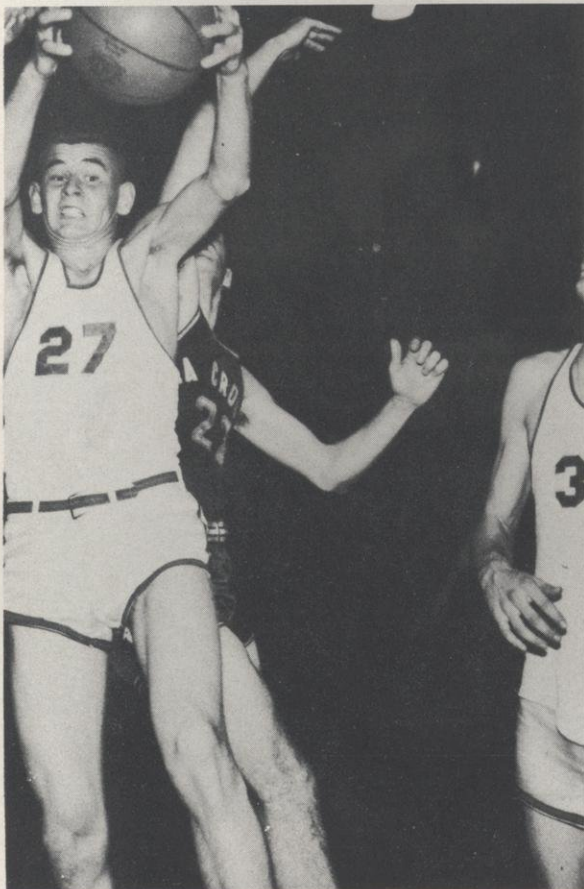
River Falls	84	St. Olaf	80
River Falls	64	Augsburg	72
River Falls	57	Augsburg	61
River Falls	71	Milwaukee	70
River Falls	68	Eau Claire	75
River Falls	78	Superior	79
River Falls	60	La Crosse	70
River Falls	93	University of Minnesota (Duluth Branch)	90
River Falls	66	Stout	70
River Falls	84	Platteville	85
River Falls	93	Eau Claire	81
River Falls	72	Superior	76
River Falls	71	La Crosse	63



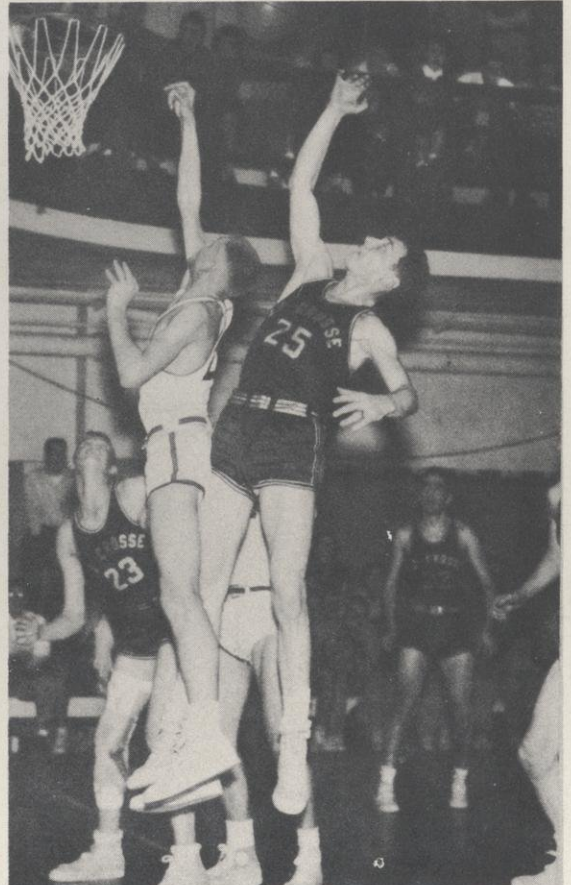
Zeke's got it!



Is that Frankenstein?



Bobby's got it!



Looks like Zeke's from here

RIVER FALLS 60 LA CROSSE 70

River Falls jumped into an early first period lead as Rog Kuss amassed 11 points, giving La Crosse a 19 to 10 deficit at the end of one stanza. But they hammered back with 31 points while holding Kuss to 15 and pulled out front by a 41 to 34 advantage at halftime. Both teams slowed up in the third period, matching basket for basket to finish with 11 points apiece. Four minutes in the third period Kuss sprained his ankle and was unable to finish the game. La Crosse stepped through the final period exhibiting none of their sparkle from last year, but enough of a glitter to defeat River Falls 70 to 60.

RIVER FALLS 93 U. of Minn. (Duluth Branch) 90

Roger Kuss authored the Duluth defeat, rolling in 44 points in three quarters, all that he played. The Falcons exhibited for the first time the power to come through in the clutches and combined four quarters of good ball to go into overtime play on Carver Fouke free throw with three seconds left to play 83-83. Wells finished the evening with 24 points and added some fine rebounding to a victory performance.

RIVER FALLS 66 STOUT 70

Kuss again grabbed scoring honors, collecting 28 points but failed to receive any support from the field behind him. River Falls, a definite favorite in the classic, added miscues to poor shooting to trail 66 to 70 at the end of regulation play. Rodney Stone, who counted with nine points in the third and final quarter was the only Falcon to edge the double bracket figures.

RIVER FALLS 84 PLATTEVILLE 85

River Falls drove in spurts and sputters to a story-book rally in the final quarter to send them into overtime play against Platteville but bowed out in the final seconds 85 to 84 on a disputed free throw. With five seconds remaining in overtime play, Czech and Flect of Platteville tangled under the basket. Flect drew the penalty shots, missing the first and converting on his second heave to win the ball game.

RIVER FALLS 93 EAU CLAIRE 81

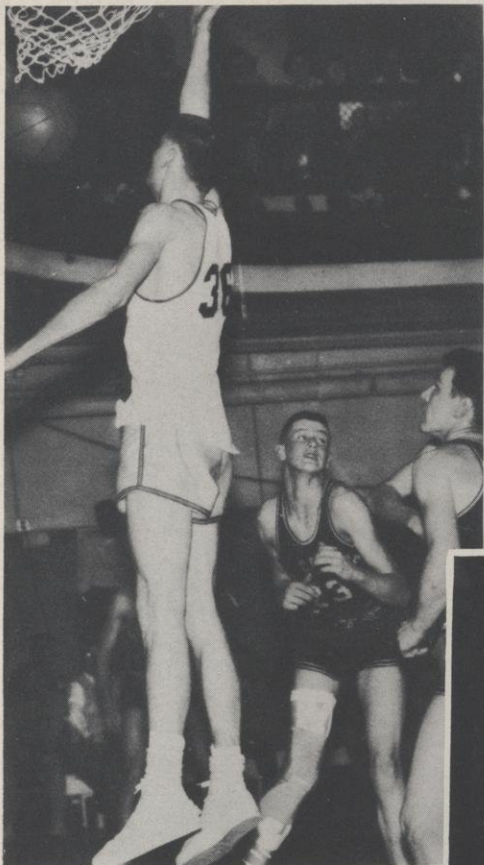
Kuss fired away at baskets with a near-par average in the opening tilt against Eau Claire's Blugolds. Finishing the evening with 45 points, Kuss hit 20 longs in 29 attempts from the field to lead his mates into winner's row after a two-game losing streak on the road. During the second half with the ball game on an additional 20-point splurge in the final period. Wells and Belisle hit double bracket figures for the winners; Wells with 13 points and Belisle counting for 10.

RIVER FALLS 72 SUPERIOR 76

Superior State dumped River Falls 76 to 72 but couldn't manacle Kuss who contributed one of his better nights of the season, 40 points. River Falls pulled out to an early first quarter advantage but the Yellowjackets kept piling up points in the second period to hold a comfortable lead going into the last minutes of play. Whittier led the Superior scoring attack as in the first meeting, collecting 23 points on five baskets and 13 free throws.

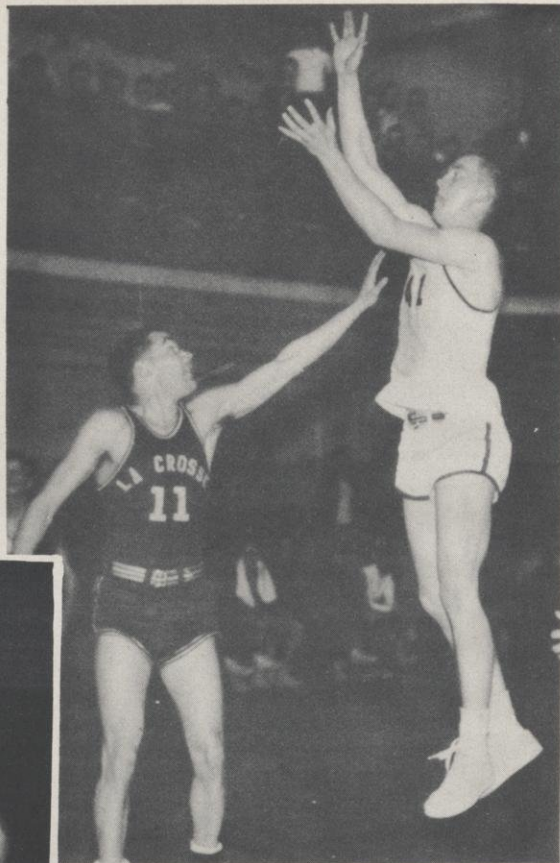
RIVER FALLS 71 LA CROSSE 63

In their final home appearance River Falls ended in a victory over La Crosse 71 to 63. Wells started the fireworks this time with two long from the corner to send River Falls ahead in the opening minutes, a lead they gave up only twice throughout the ball game. But La Crosse matched basket for basket and pulled to within one point at halftime, 33 to 34. Coasting on a six point lead with seven minutes playing time remaining River Falls went into a hit-or-miss sort of stall that brought La Crosse out into a full court press in an effort to gain control of the ball.

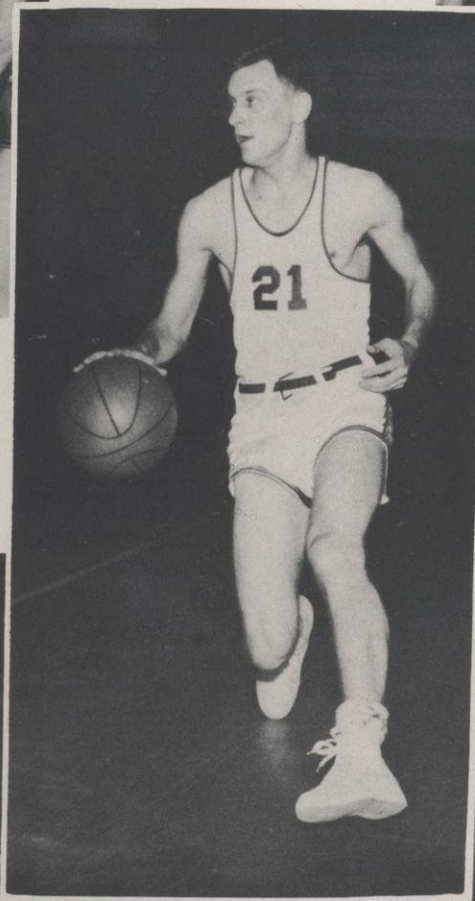


From Kuss— —

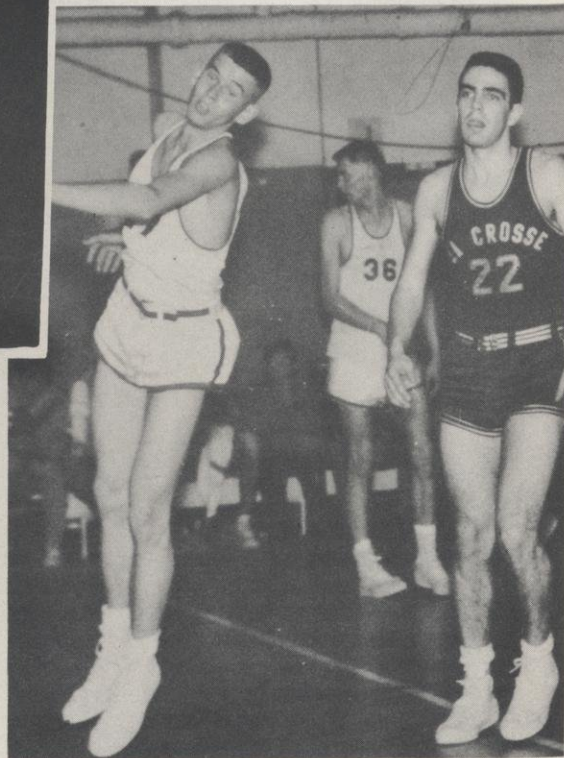
— —to Barlow— —



— —to Czech— —



— —to Wells— —



— —to Williams.

RIVER FALLS 84 ST. OLAF 80

Diminutive Ray Czech and superlative Rog Kuss combined for 51 points as River Falls squeaked past St. Olaf of Northfield 84 to 80 in an overtime period. River Falls took an early 21 to 15 first quarter advantage as Kuss and Czech hit for six points apiece to roll to a 11-point halftime lead, 40-29. The River Falls lead was trimmed to 63 and 58 opening the third quarter. With the clock running out and the River Falls lead whittled to 76-75 St. Olaf drew a free throw and tied up the ball game. Wells and Mills connected on timely buckets to aid the remaining court veterans and wrap up the game for River Falls.

RIVER FALLS 64 AUGSBURG 72

River Falls met Augsburg in their second home appearance but bowed out of the picture in the final minutes to lose 72-64. Reimer, fast breaking Auggie forward, poured in 29 points to lead both teams in scoring and walk off with a victory in the personal feud against Falcon Kuss who tallied 28. Augsburg led throughout most of the game, pulling to an early second quarter advantage after the first stanza ended tied 12 all.

RIVER FALLS 57 AUGSBURG 61

River Falls threw a 28-22 halftime advantage out of the window and Augsburg raced back the second half to defeat the Falcons 61 to 57. Rog Kuss was held to 20 points while his mates failed to break into two-digit scoring for the Falcons. Augsburg cashed in as Kuss and Wells fouled out in the fourth quarter.

RIVER FALLS 71 MILWAUKEE 70

River Falls outlasted a story-book rally that fell just short at the final gun posting their second conference win with no defeats at the expense of Milwaukee State 71-70. Czech busted open Milwaukee's scoring party with six points the first quarter and Kuss got a chance to stretch as the defensive pivot men moved out to silence the back-court barrage.

RIVER FALLS 68 EAU CLAIRE 75

The Blugolds stopped everything the Falcons had to offer except Kuss whose 37-point donation was admirable but insufficient. Wells hit for 11 points for River Falls, the only other Falcon to score in double brackets. In the opening quarter Kuss grabbed 10 of the Falcon's 17 points. He failed to cool down and rounded out his performance with 13 points in the final quarter. Aside from his usual role in the point department, Rog also set the pace in bounds throughout the contest. Czech was the only other Falls cager to connect from the field in the final stanza to join Wells with five free throws for the same period and close out the Falcon scoring.

RIVER FALLS 78 SUPERIOR 79

Superior's Whittier, fouled by Wells, dropped in a free throw with fifteen seconds remaining to edge River Falls 79 to 78. Foukes made his scoring debut as starting forward with River Falls, contributing 13 points the first half to push the Falcons to a 41 to 38 advantage at halftime. Kuss, cavorting from pivot for the locals, wound up with 14 points. In the final stanza Superior pulled out in front for the largest margin in the game, five points, but with Williams subbing for Foukes with five personals, drove out two layups and Czech added a gift toss to even the count with four minutes remaining. With 30 seconds on the clock Williams drew a two-shot foul under the net driving from the corner. He converted on both chances, knotting the score at 78-all.

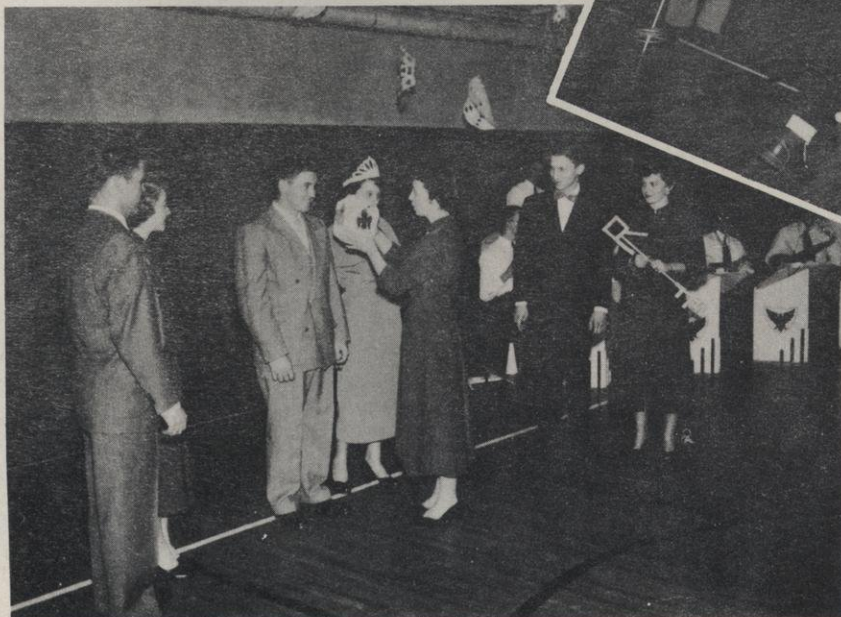
Winter Carnival



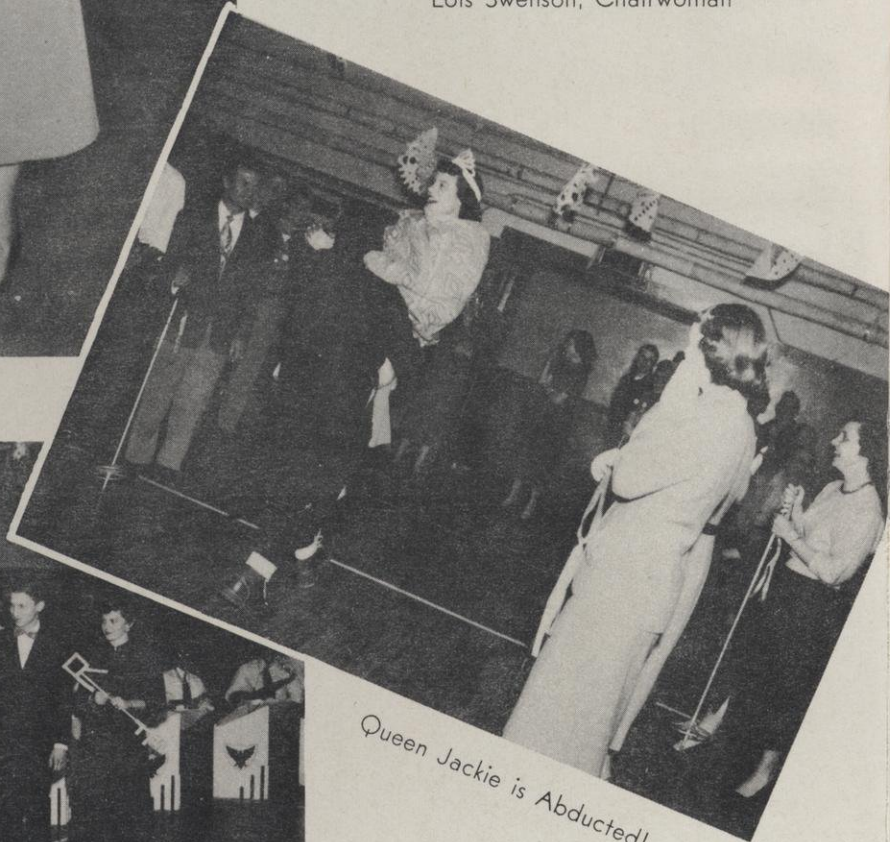
King Jerry Easton and Queen Jackie Greene



Lois Swenson, Chairwoman



Chairwoman Swenson Crowns the King and Queen



Queen Jackie is Abducted!

CARNIVAL SCHEDULE

Friday:

General Assembly
Carnival Midway in South Hall Gym
Card tournament in the Cafeteria
Figure Skating show
Sleighride
Cafeteria Dance

Saturday:

Indoor sports events
Ski tournament
Skiing and tobogganing at Fourth Street Hill
"Battle of the Sexes"
Basketball . . . Superior versus River Falls
Winter Carnival Dance
Coronation of King Jerry and Queen Jackie

Grand Entrance of Winter Carnival Royalty



1951 BASEBALL SQUAD



LETTER WINNERS 1951 BASEBALL

Willard Morgan
Manley Fossen
Keith Riley
Glen Hanson
Bob Salmon
Don Barlow
Howard Matthias
Harlan Nelson
Dale Kannel
Clyde Weber
Bob Houg
Vern Steinmetz
Howard Cox
Art Jevet
Eldon Hight
George Stout
Bill Huff, Mgr.

LETTER WINNERS 1951 GOLF

Chuck Beaver
Eric Von Schweinitz
Bob Bernet
Dean Wilkins
John Mills

LETTER WINNERS 1951-52 BASKETBALL

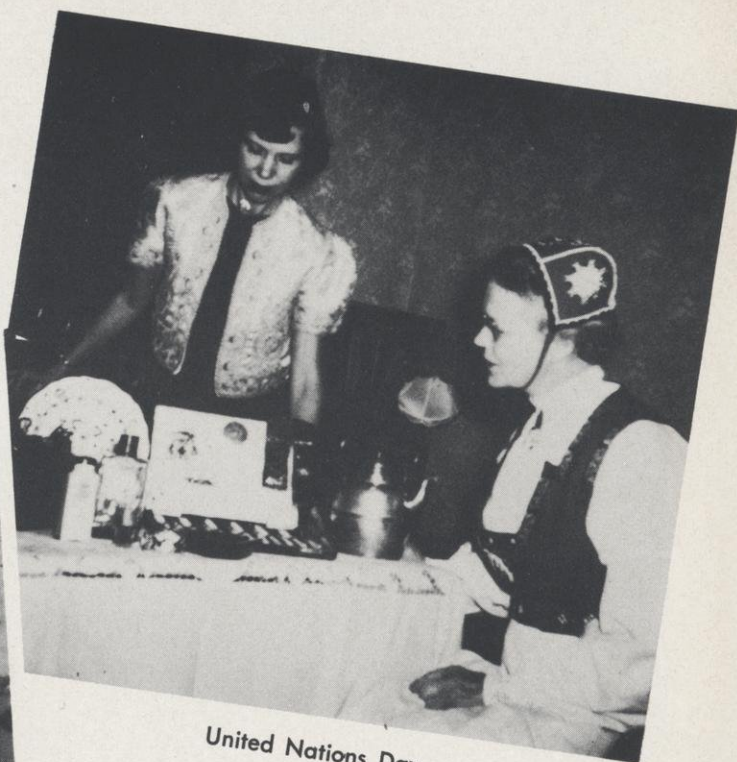
Roger Kuss
Jack Shield
Carver Foukes
Ray Czech
Jim Belisle
Don Barlow
Richard Wells
Bob Williams
Don Fick
Jim Saxton

LETTER WINNERS 1951 TRACK

Don Veith
Norman Parker
John Oedsma
Reuben Kaiser
Hugo Leider



Winter Carnival Fun



United Nations Day



"Aladdin"



Doc Kargie



"ROMEO AND JULIET"

CAST

Escalus, Prince of Verona
 Paris, a young nobleman
 Montague
 Capulet
 Romeo, son of Montague
 Mercutio
 Benvolio
 Tybalt
 Friar Lawrence
 Friar John; Samson
 Balthasar; Peter
 Gregory
 Abraham
 Apothecary; Old Capulet

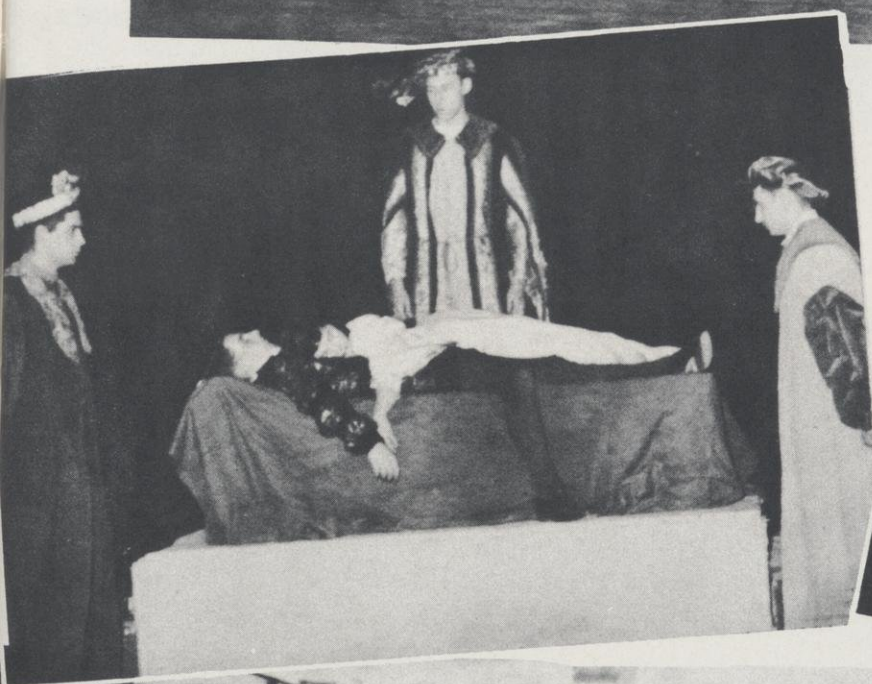
Bryant Wyman
 Richard Granum
 Marvin Postler
 Arden Buchholtz
 Peter Russ
 Richard Armstrong
 Francis Wingert
 Norman Noah
 Al Usack
 Halbert Belt
 John Reque
 Everest Sonsalla
 John Foss
 Robert Jensen

Pages
 Gentlemen
 Lady Montague
 Lady Capulet
 Juliet, daughter of Capulet
 Nurse to Juliet
 Court ladies
 Director
 Assistant Director
 Stage Managers
 Lighting
 Publicity
 Costumes
 Prompter

Alice Luck, Juan Caro, Margery Deans
 Robert Easton, Robert Koenig
 Donna Sammons
 Margaret Anderson
 Betty Wiskerchen
 Virginia Thompson
 Joan Grandinetti, Virginia Weatherhead
 Blanche Davis
 Al Usack
 Donna Jones, Delores Kreuziger
 Norman Noah
 Ken Nehmer
 Ann Wonderly
 Sally Dickenson

February 14-15

North Hall Auditorium





CAST

David Knott
 Jean Herald
 Genevieve Olson
 Donna Sammons
 Lois Swenson
 Melton Martinson
 Norman Dahl
 Bill Tilsner
 Beverly Jensen
 Wayne Larson
 Mary Jane Haessly
 Blanche Davis
 Carrie Dorsey
 Earl Paschall

Thomas Lytell
 Eleanor Lytell
 Mrs. Lytell
 Deborah
 The Old Queen
 Cornplanter
 Falling Leaves
 Many Bears
 Eagle Feather
 Redbill
 Shining Leaves
 Director
 Technical director
 Stage Manager
 March 21-22, 1952
 North Hall Auditorium

"THE INDIAN CAPTIVE"



INTRAMURAL BASKETBALL



FINAL STANDINGS:

Strong League

	Won	Lost
Hawkeyes	7	0
Whizz Kids	6	1
Jerneymen	4	3
Dead Dogs	4	3
Friendly Five	3	4
Tigers	3	4
Apostles	0	7

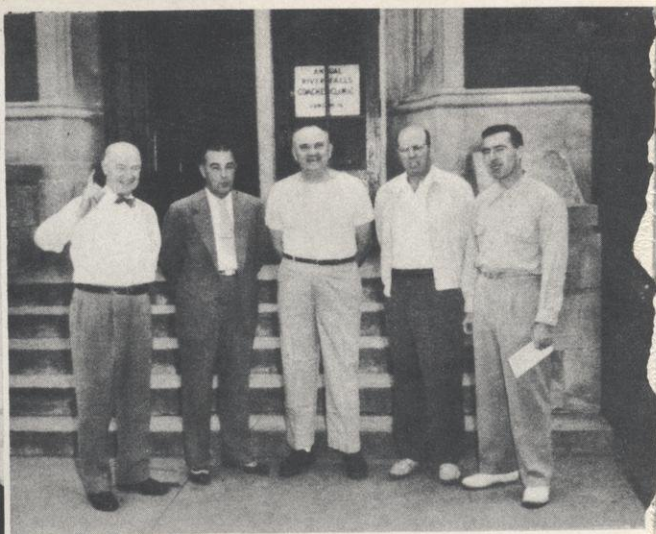
Weak League

	Won	Lost
4 Flats and a Sharp	8	1
G. L.'s	7	2
Panthers	7	2
Seldom Inn	6	3
Cellar Dwellers	5	4
Gamma Deltas	5	4
Five Aces	3	6
House of Collins	2	7
Pistons	1	8
Fumbling Five	1	8



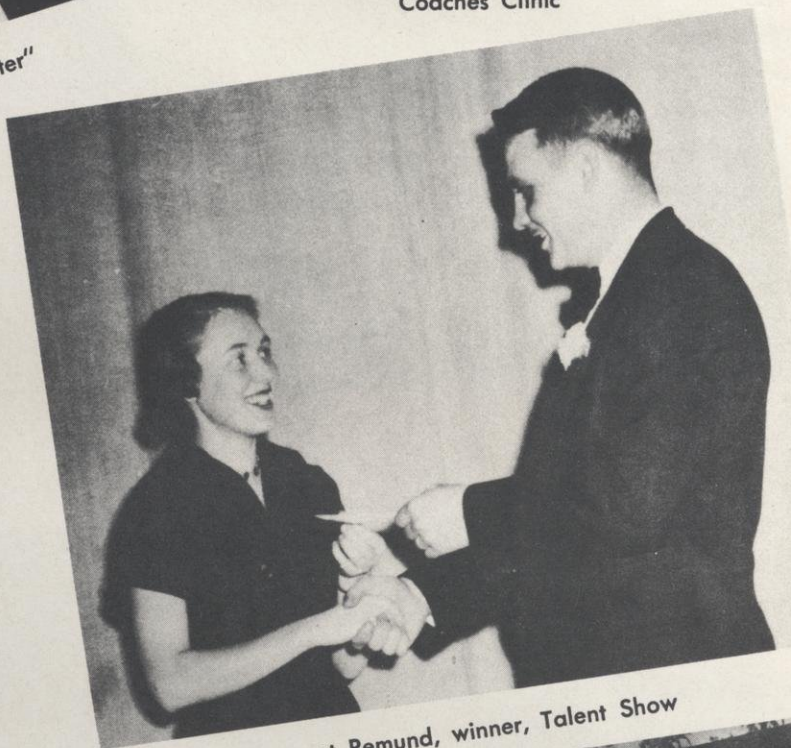


Senior play, "The Dumb Waiter"

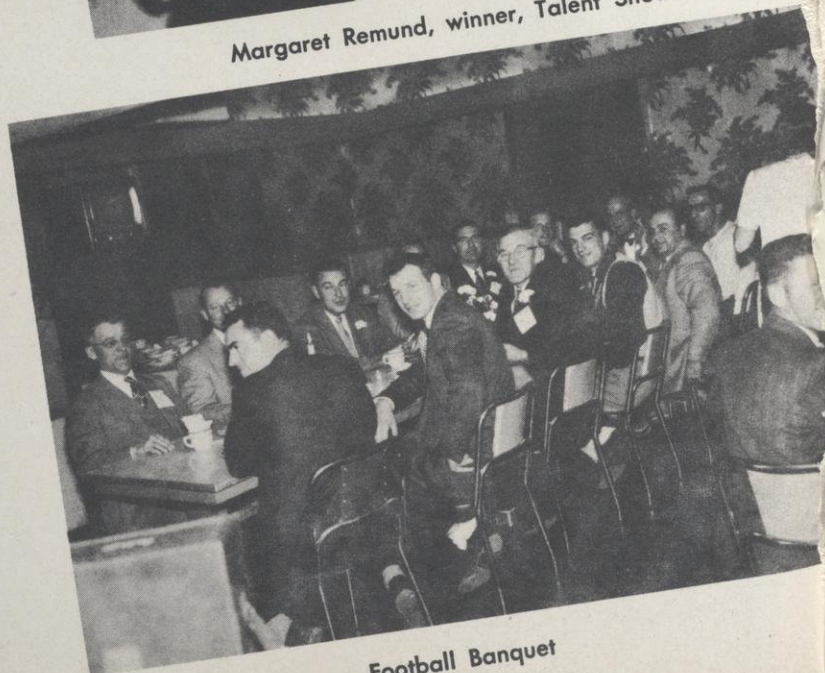


Coaches Clinic

Valentine Formal Royalty



Margaret Remund, winner, Talent Show



Football Banquet

