



LIBRARIES

UNIVERSITY OF WISCONSIN-MADISON

The Emerald: the Waterford Union High School annual. 1947

Waterford, Wisconsin: [s.n.], 1947

<https://digital.library.wisc.edu/1711.dl/DPEMPOSTSISKE9A>

This material may be protected by copyright law (Title 17, US Code). Original material owned by Waterford Public Library. For information on re-use, contact the Library through the Reference Department, Waterford Public Library, 101 N. River Street, Waterford, Wisconsin 53185, 262-534-3988, (jolliffe@waterford.lib.wi.us).

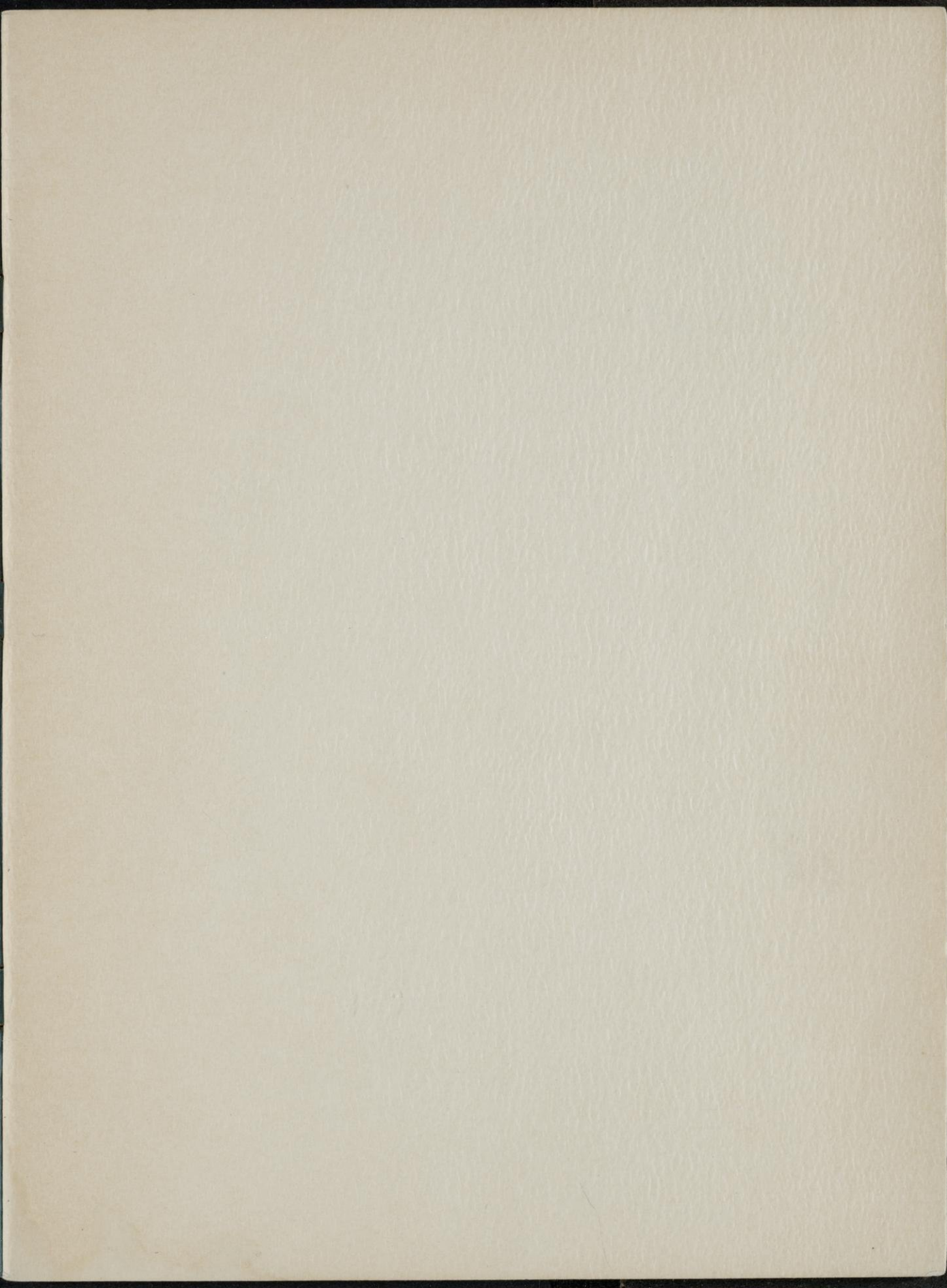
The libraries provide public access to a wide range of material, including online exhibits, digitized collections, archival finding aids, our catalog, online articles, and a growing range of materials in many media.

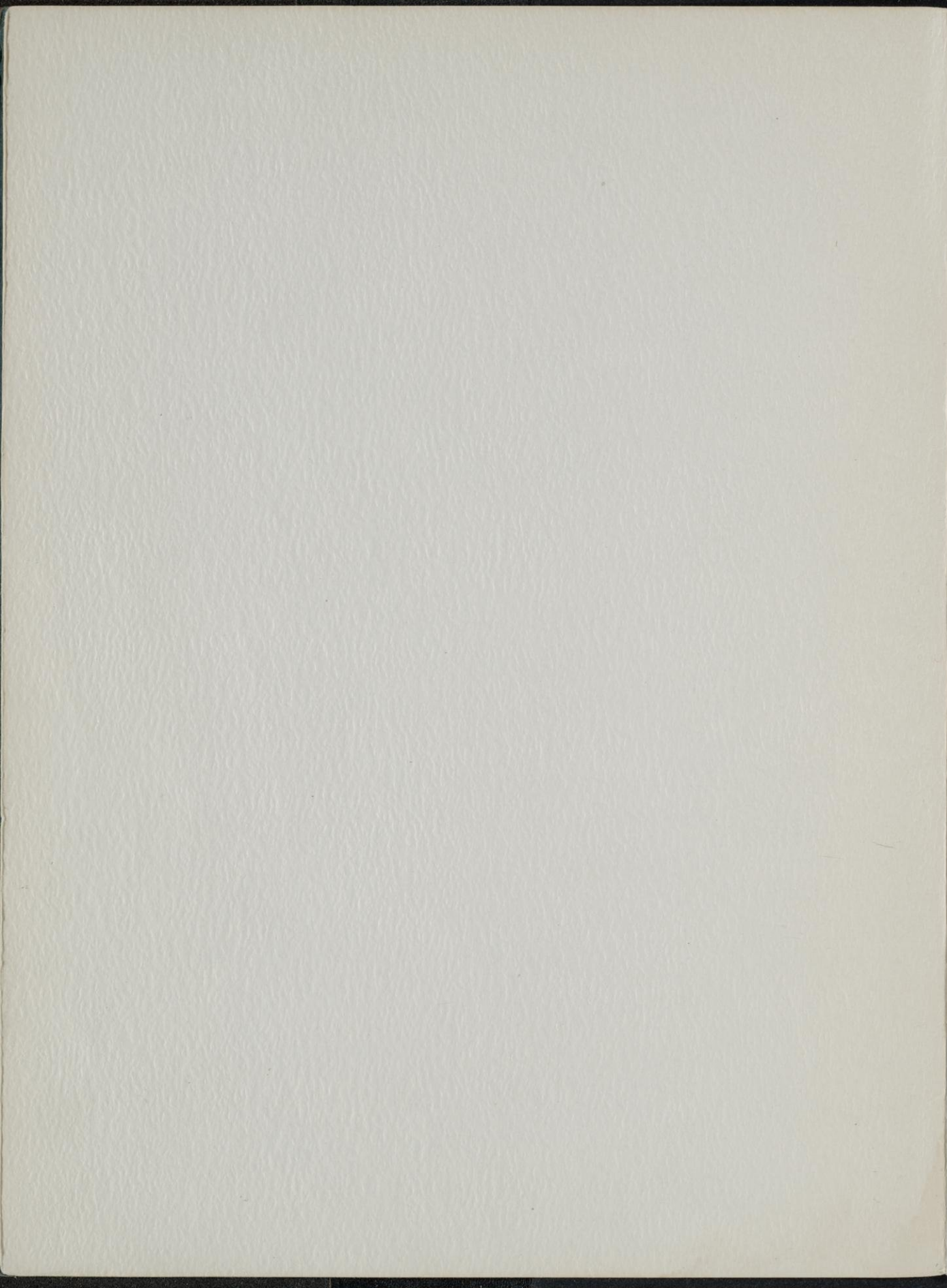
When possible, we provide rights information in catalog records, finding aids, and other metadata that accompanies collections or items. However, it is always the user's obligation to evaluate copyright and rights issues in light of their own use.

EMERALD

The

1947





Volume I

1947

WATERFORD HIGH SCHOOL

Ex Libris

PAID

Waterford High School
Library

The Annual Staff of

WATERFORD HIGH SCHOOL

Waterford, Wisconsin

presents

Volume I

1947

Co-editors

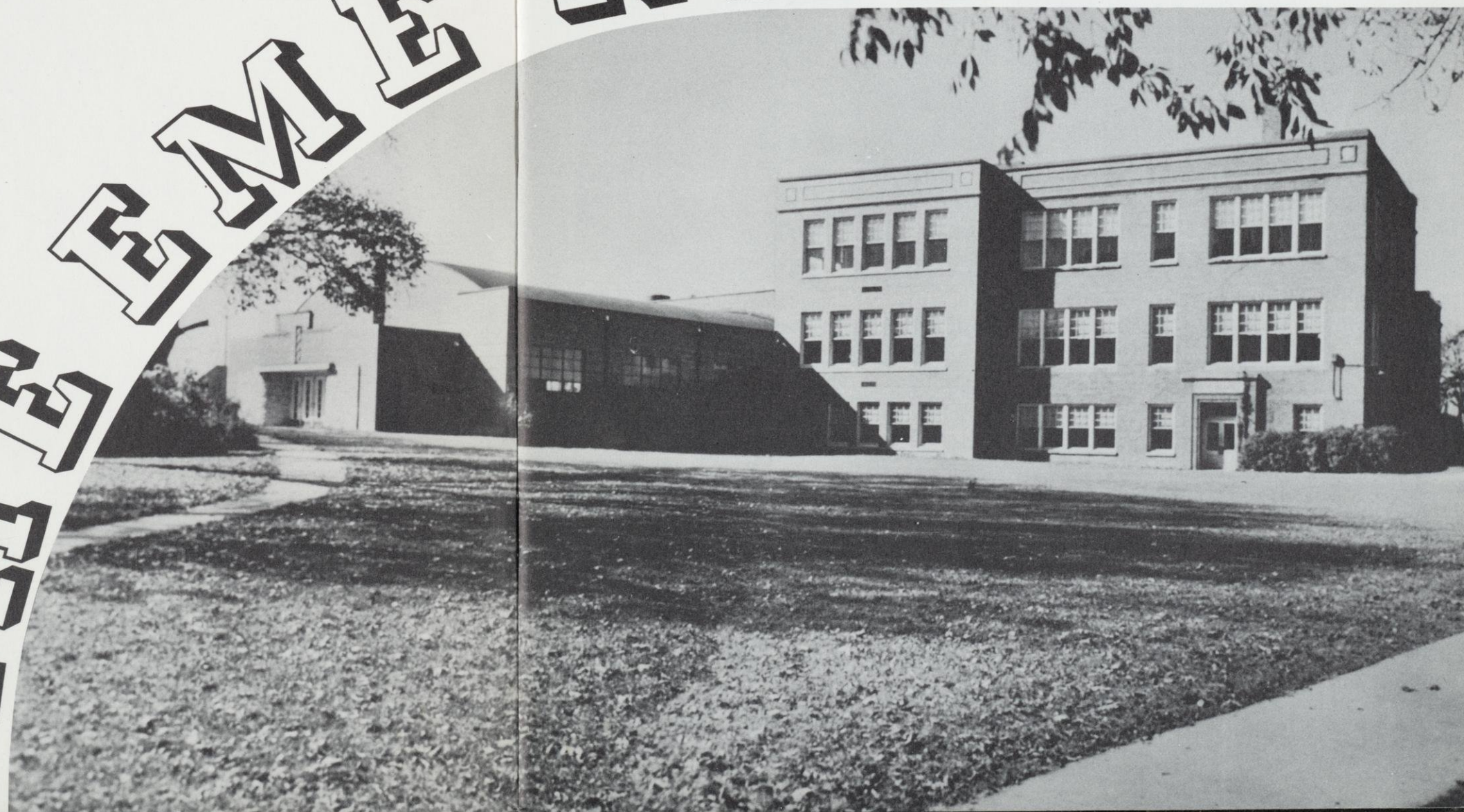
Shirley Schwedler Julie Malone

Business Manager

Robert LaCombe

R A L D . . .

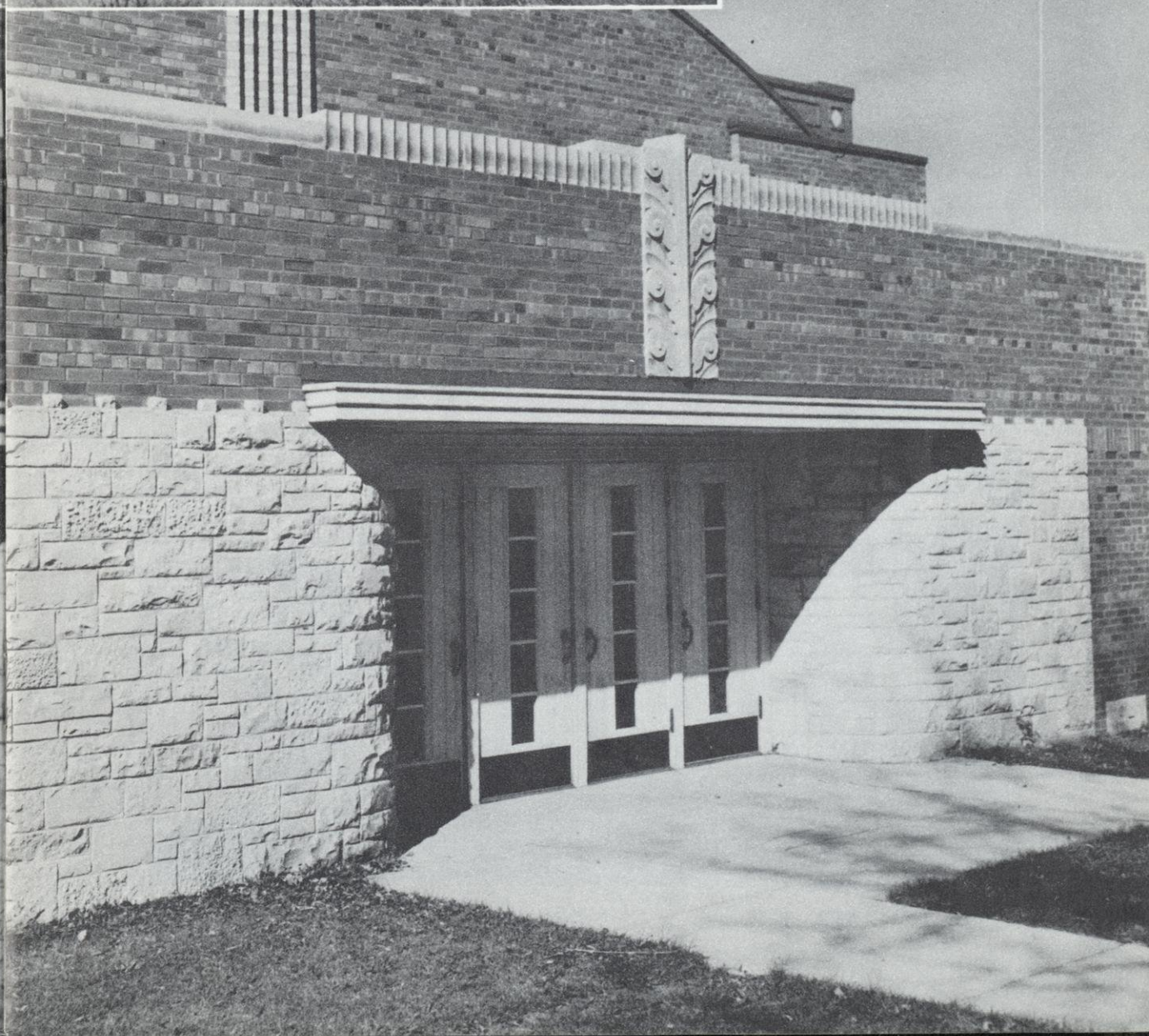
THE FEME



The view from Mount Tom is one to be remembered by all students, for its beckoning call to enjoy the seasonal activities is one which cannot be resisted. The other scenes represent the gateway to recreational activities at W.H.S. Through these doors, eager boys and girls step gaily to games and dances.



HS



DEDICATION

To the Board of Education

Waterford High School

In every community we find public spirited men who are willing to give of their time and effort to further the development of some phase of community life. Of such is the present school board of Waterford High School. These men have an earnest desire to see education in Waterford keep pace with the economic and civic progress that has been so noticeable in our village in recent years. It is largely through their efforts in securing material, equipment, competent instructors, and improved and enlarged facilities that our school will be enabled to take its place with similar institutions elsewhere and furnish a real educational opportunity for every boy and girl in this vicinity. In appreciation of these endeavors, we dedicate this annual to the school board members who have provided the stimulus necessary to make such an enterprise possible.



N. H. Johnson

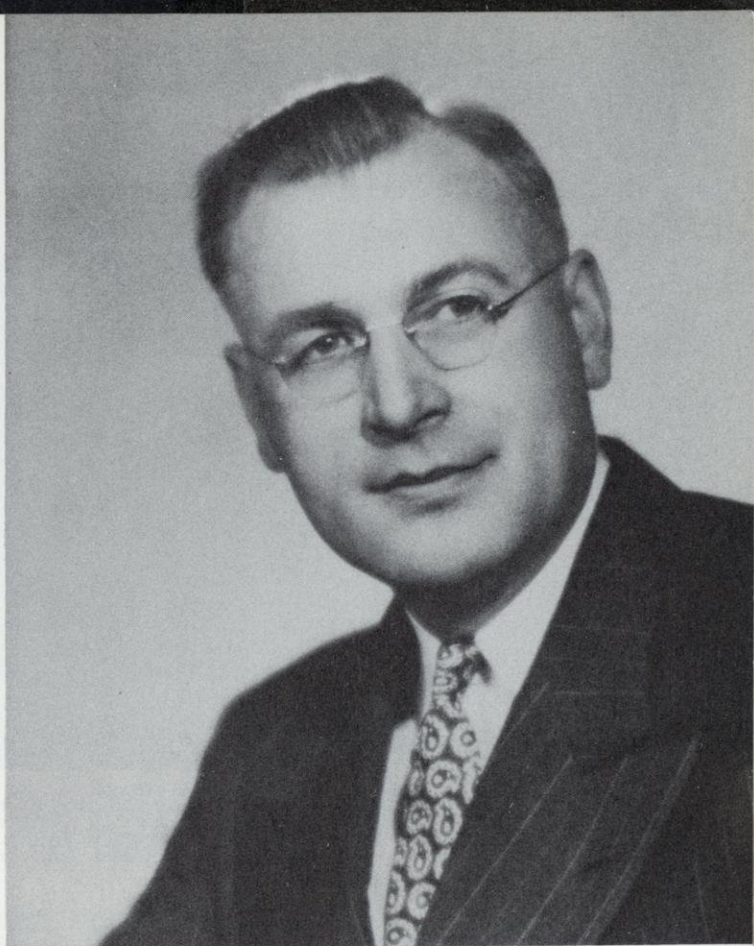


A. E. Maage Jr.



H. W. Trimbarn

If we students are looking for an example to follow in courtesy and industry, we need look no further than our own principal, Mr. E. A. Rintelmann. The management of the school is characterized by his personal efficiency. Anything concerning school—studies, activities, equipment, for example—can be found at a moment's notice by means of his well-planned filing system in the office. He pleasurably renders any information requested by each and every student. One of his many assets, duly recognized by all students, is his broadmindedness and reasonable attitude toward various subjects. Although he accepts suggestions readily enough, providing he believes the school will profit from them, whenever he is doubtful of the course of action proposed, his determination asserts itself. He has increased the curricular and extra-curricular program offered at Waterford High School, and he holds, always, scholarship before all else.



E. A. RINTELMANN

... The Principal's Message

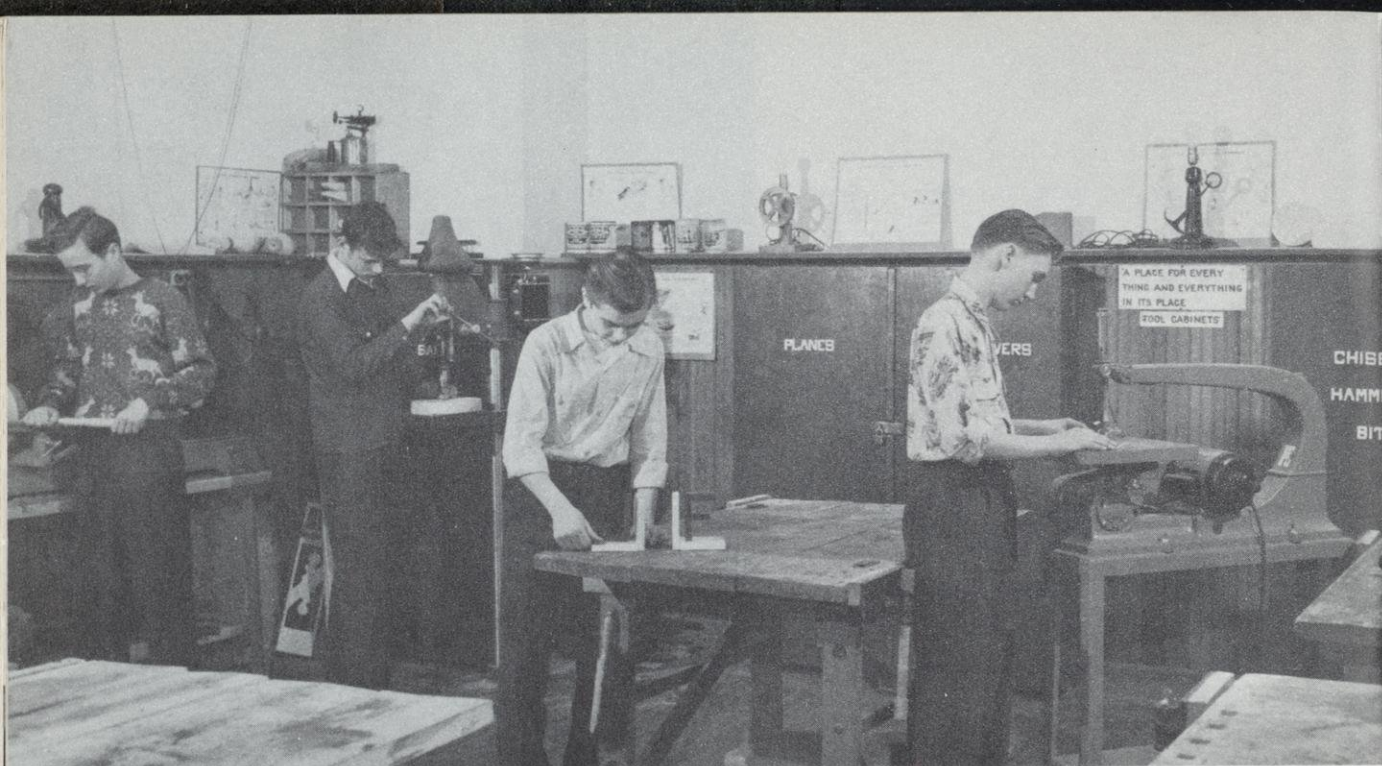
The Emerald, the first annual of its kind at Waterford High School, is hereby being presented to this community. We hope that it will be cherished for the glorious memories it contains. This annual is presented to review the events of the past school year: to present them sincerely and to serve as a real echo of the past when this year has become but a memory. The artists of camera and pen have portrayed it well, and to them, the staff, we extend our compliments. To the group of business and professional men who have contributed to the editing of this school annual, the management of The Emerald desires to express sincere appreciation.

To the students, to the alumni and to the people whom we serve in this area, we pledge, our best efforts to furnish curricu-

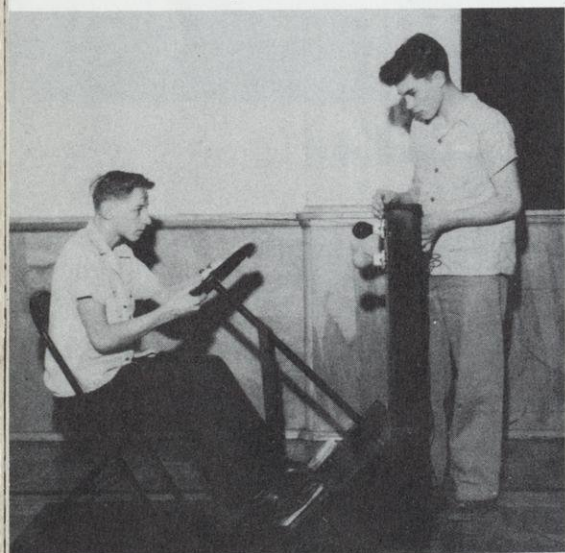
lum offerings, faculty, facilities, materials of instruction, and activities at Waterford High School on the best level possible. We trust that each student will, while he is in attendance here, take advantage of every opportunity offered here, by putting forth his best effort, and living his best self while here.

To former students, these pages will be memories of their school life; to the present students, they will be an encouragement to further success; and to all future students, a lodestone which we hope will draw them to our midst.

In years to come, may these pages become as shrines to you—shrines of your high school days which you loved and enjoyed so well.

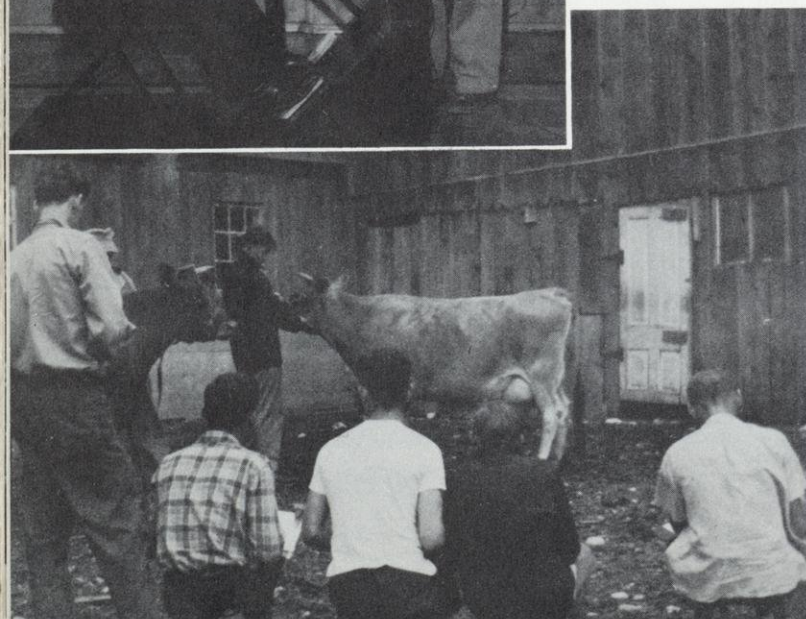


MANUAL ARTS is a new subject that has proved very popular with the boys enrolled in it. Here you see them at work on beautiful and useful projects such as lamps, end tables, ash trays, and book ends.



DRIVER EDUCATION is one of our most interesting extra-curricular activities. Six new devices—Hand steadiness, Glarometer, Reaction-time, Depth perception, and Tunnel vision—have been added for the use of students.

STOCK JUDGING is only one of the projects included in the course in Vocational Agriculture.



MR. DAUGHERTY

Platteville Teachers' College, B.S.

Manual Training, Mechanical
Drawing, Vocational Agriculture
Driver Education



HOME ECONOMICS offers a great variety of worth-while experiences through activities in connection with the planning, buying, preparing, and serving of food. Other phases of the home-making course include interior decorating, infant hygiene, home nursing, clothing design, and the sewing skills.



WEAVING—a project in Home Economics III—is an art which stimulates new color schemes, original designs, and different uses of textures.

MISS FISHER
Beloit College, B.A.
Home Economics, English
Junior Prom
Junior Boys' Cooking Class





MR. RADCLIFFE

River Falls State Teachers' College, B.E.

Biology, Chemistry,
Physics, General Science
Camera Club

CHEMISTRY — Whenever we sense peculiar odors during the third period in the morning, we know that the chemistry class is busy again. The class is lucky to have a good supply of chemicals, test tubes, and apparatus necessary for carrying on the many experiments. It is a class that combines fun with learning.



PHYSICS, the subject of light, sound, electricity, atomic energy, and other interesting problems! All are taken in stride by this class of seniors who work on and enjoy the demonstrations. This interesting picture was snapped while the boys were working on an experiment with pulleys.



BIOLOGY—If you chance to walk into the biology room, you might find a group of sophomores casually dissecting frogs or grasshoppers. Or you might find them looking through a microscope trying to find bacteria in a liquid. It's obvious that they find the subject fascinating.



TYPING has a popular appeal because of its practicality and its vocational aspect. Having mastered the keyboard, senior students work on more intricate matters connected with secretarial correspondence. Those with coordination, rhythm, and accuracy attain a high degree of skill.

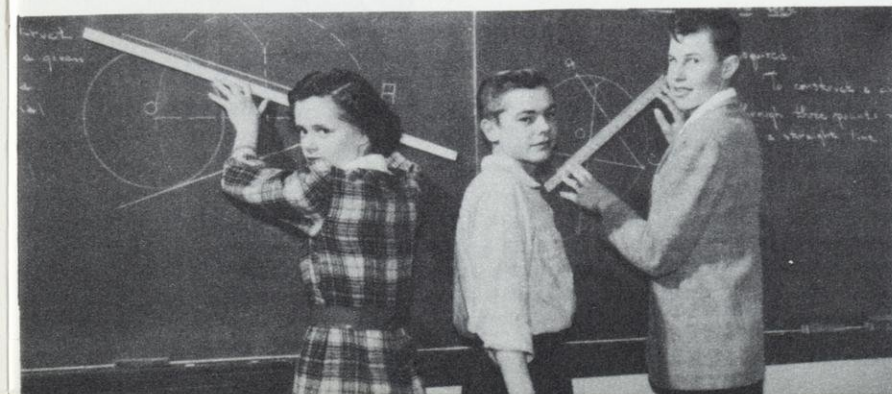
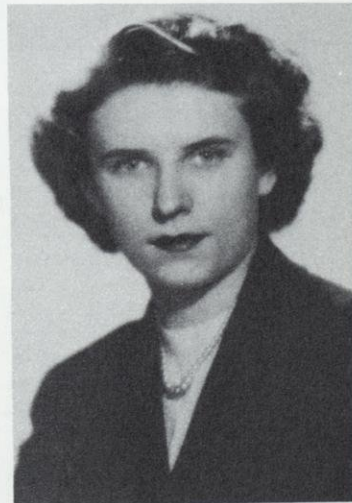


MR. STEIN

Whitewater State Teachers'
College, B.E.
University of Illinois
Bookkeeping, Shorthand, Typing
Adviser to EMERALD ECHO

GEOMETRY is a subject that calls for concentration and brain power. Members of the class enjoy it nevertheless, especially the drawing of triangles, circles, and parallelograms and solving the problems connected with them.

MISS FRIEDRICH
Marquette University, Ph.B.
Geometry, Algebra, General
Mathematics
Dramatics, Cheerleaders





THE LIBRARY CLUB functions efficiently at checking out and receiving books and periodicals during the study periods. The girls are really busy when book reports come due in the English classes.



LITERATURE—that vast storehouse of the best that has been thought and said on every conceivable subject of human experience—enables a student to understand himself and the world about him and offers to most students of ENGLISH a pleasant interlude.



COMPOSITION activities—both oral and written—give opportunities to students to express their own ideas with clarity and correctness, often with imagination and power. Students of ENGLISH will find that the skills they develop now in composition will secure rich rewards for them socially, vocationally, and intellectually in the years to come.



MISS HANDRAN

University of Wisconsin, B.A.
University of Chicago, M.A.

English, Latin
Forensics, Adviser to THE EMERALD



MR. KOSTRZAK

St. Norbert's College, B.A.

English, Civics

Librarian

CIVICS is taught to all freshmen that they may learn to understand, appreciate, and co-operate with the government under which they live. Movies combine with class work to reinforce important points.



MR. MINGST

Platteville State Teachers' College

Civics, Physical Education,
Football, Basketball, Baseball
Student Council Adviser



GIRLS' PHYSICAL EDUCATION keeps the girls active and happy through setting-up exercises and games such as basketball and volleyball.

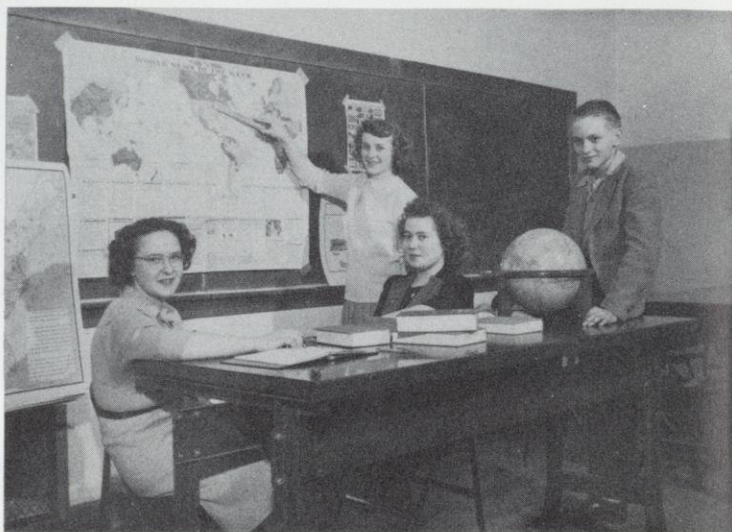




MISS BROWN

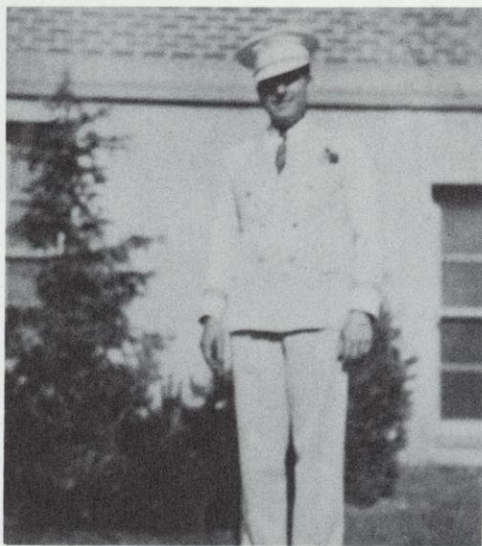
College of St. Teresa, B.A.
U. S. History, World History, Social Problems,
English IV
G.A.A. Adviser

AMERICAN HISTORY students work with maps, charts, and references for a detailed study of this great country of ours. All members keep up on present trends as well, through the weekly magazine, *American Observer*.



MR. McELROY

Wisconsin Conservatory of Music
Milwaukee State Teachers' College
DePaul University
Band, Glee Club



MR. ANGSTEN

As custodian of our building and grounds, Mr. Angsten is kept busy all year long. The artistic appearance of the rooms is due to his ability as a painter. He enjoys chatting with the students while he performs his round of duties.



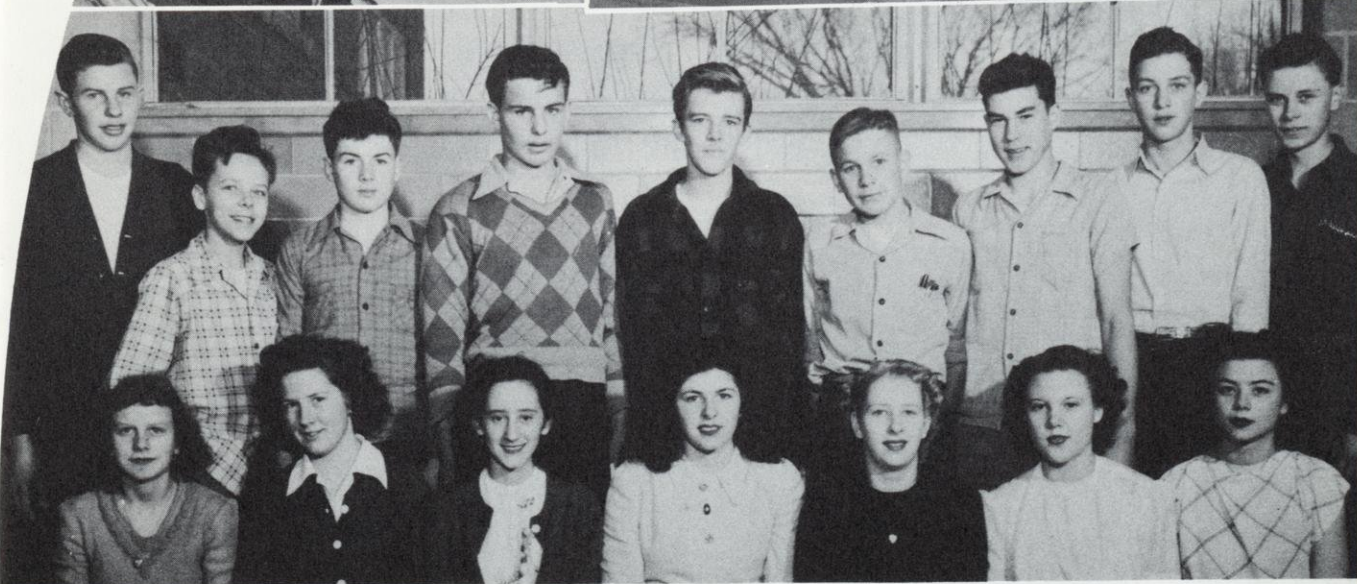
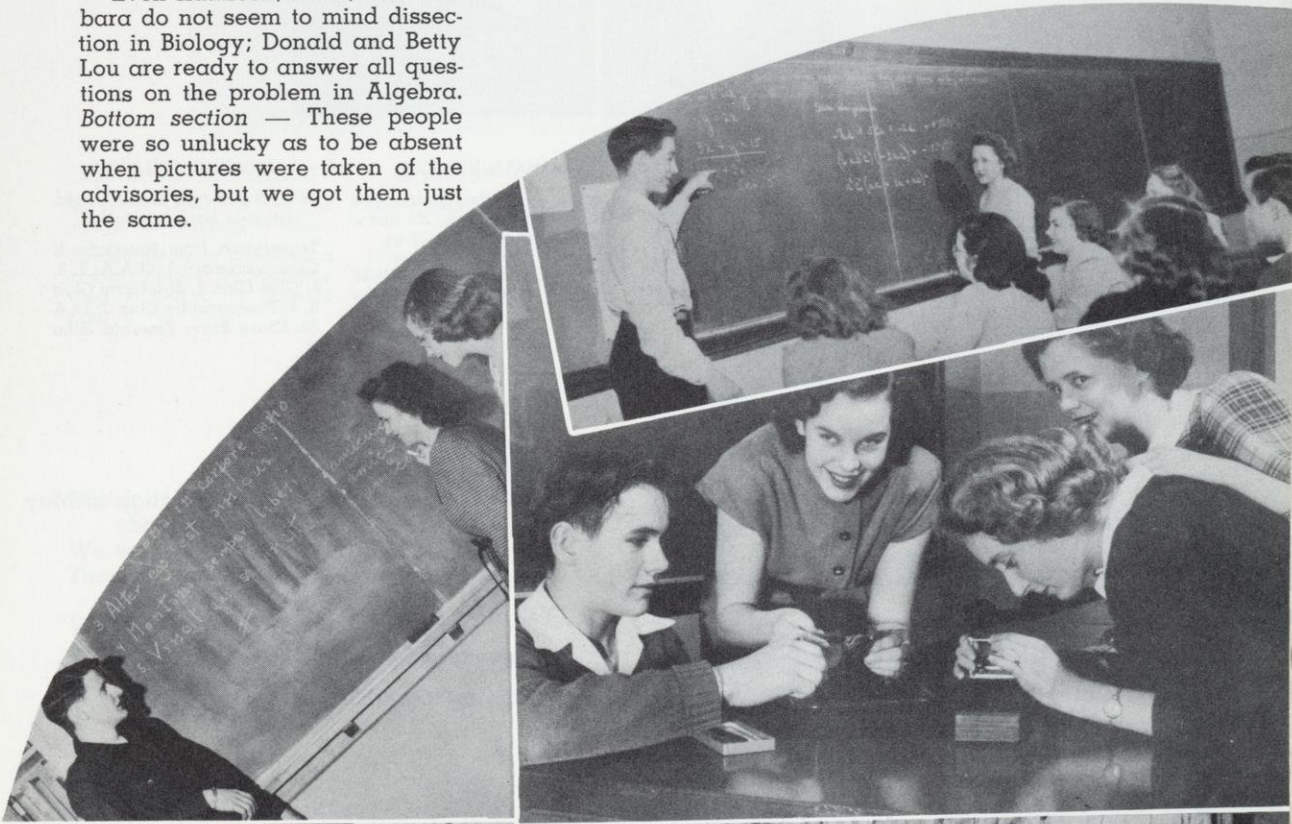
MRS. BEHLING

We are indeed fortunate to have such an efficient and good-looking office girl. She works three times a week in the morning. Besides typing all the school mail, she is a great help to the teachers by typing and mimeographing their tests. Our auburn-haired secretary has a smile for all and has always been very courteous to everyone during the two years she has worked here.



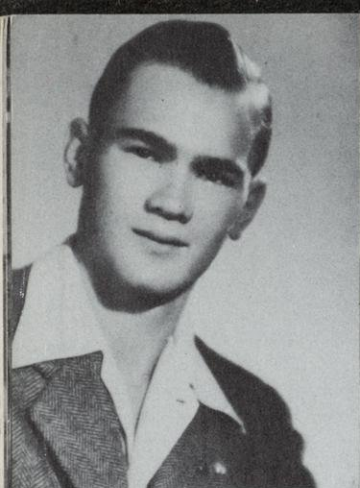
CLASSES

Top section — In Latin I, Sallie Moore explains case endings to Bob La Combe while Dorothy Habecost listens. *Middle section* — Even Kathleen, Ellen, and Barbara do not seem to mind dissection in Biology; Donald and Betty Lou are ready to answer all questions on the problem in Algebra. *Bottom section* — These people were so unlucky as to be absent when pictures were taken of the advisories, but we got them just the same.



Top Row: J. Greil, Chic, Torgerson, L. Greil, Fitzgerald, Duffrin, Pagel, Lehman, D. Mayer.
Bottom Row: Hart, Allen, Crema, Gerovak, Schwedler, Bauer, G. Mayer.

Senior



WILLIAM ALLEN

Duke—Girls! What are they?
Photography Club 3, 4; Basketball 3, 4, Manager 1, 2; W Football 3, 4; Manager 1, 2; Glee Club 1; Baseball 3, 4.

OSWALD BREILING

Ozzie—Good things come in small packages.

Transferred from Waukesha 4; Photography Club 4; Football 4.

RICHARD BUENGER

Bizz—A regular guy—an athlete, good build, and good-looking.

(2) W Basketball 1, 2, 3, 4; (3) W Football 1, 2, 3, 4; Glee Club 1, 2; Photography Club 4; Class President 1, 4; Jr. & Sr. Class Play; (1) W Baseball 3, 4; Student Council 3, President 4.

JAMES CHRISTENSEN

Christy—Women are the least of my worries; it's my car that bothers me.

Class President 3; (2) W Basketball 2, 3, 4; (2) W Football 3, Captain 4; (2) W Baseball 3, 4; Photography Club 3, 4; Class Treasurer 1.

DONALD BEHLING

Donnie—To be great, you have to reach high. He has a head start on all of us.

(3) W Basketball 2, 3, 4; (2) W Football 2, 3, 4; Photography Club 4.

BEVERLY BILLINGS

Bev—Not a care in the world, always happy-go-lucky.

Transferred from Riverside 2; Class secretary 2; G.A.A. 2, 3, 4; Glee Club 2, 3; Library Club 3, 4; Photography Club 3; Jr. & Sr. Class Play; Emerald Echo 3.

We're leaving! Yes, leaving Old High in May

For a world immeasurably vaster.

A world chaotic—some say—

Yet offering scope for talents diverse

In meeting the needs of the universe

From lexicographer to nurse.

DONALD CORNELIUS

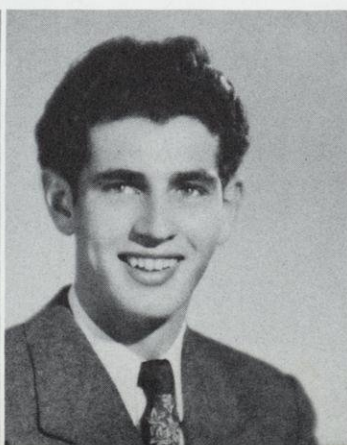
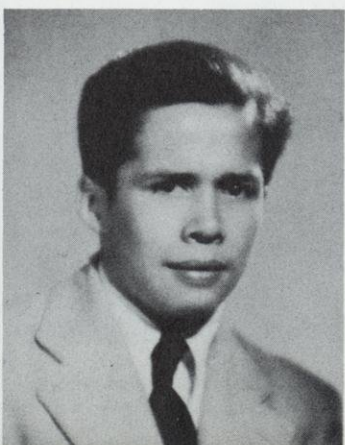
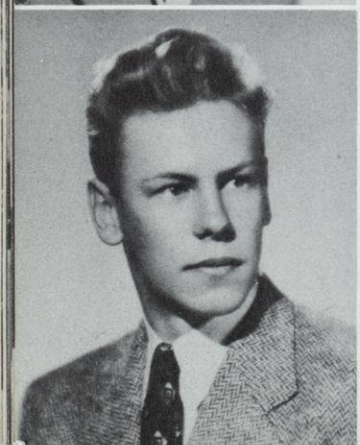
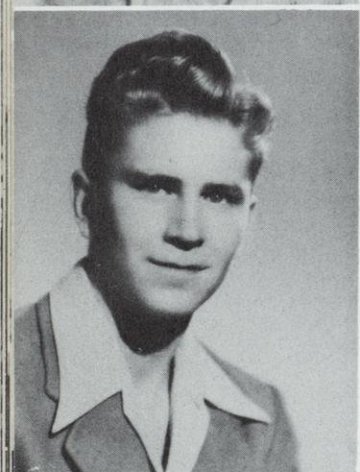
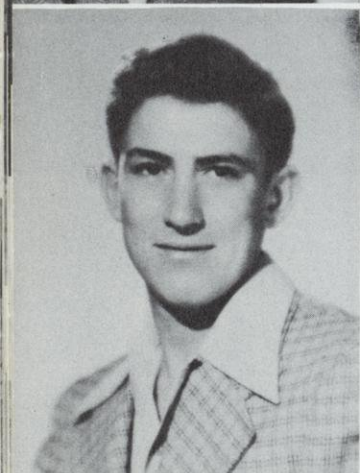
Pete—Men prefer blonds—How true!

Glee Club 1, 2; Basketball 1, 2, 3, 4; Football 2, 3, 4; Class Treasurer 2, 4; Jr. Class Play.

BERNARD DOLEZAL

Bernie—Don't rush me. I'm not in a hurry!

Transferred from Pulaski 4; Class Treasurer 4; W Football 4; Baseball 4; President Photography Club 4.



Class



KATHRYNE DONALDSON

Kathy—I believe in the old adage "Be a friend to man".

Transferred from Mukwonago 4; Glee Club 4; Photography Club 4; G.A.A. 4; Emerald Echo 4.



KATHRYNE GEROVAC

Katy—Give me time, I'm new around here!

Transferred from West Milwaukee 4; Photography Club 4; Glee Club 4; G.A.A. 4.



ELAINE GEIF

Shorty—Silence is Golden.

G.A.A. 1, 2, 3, 4; Band 1, 2, 3, 4; Photography Club 3, 4; Glee Club 1, 2, 3, 4; Emerald Echo 4.

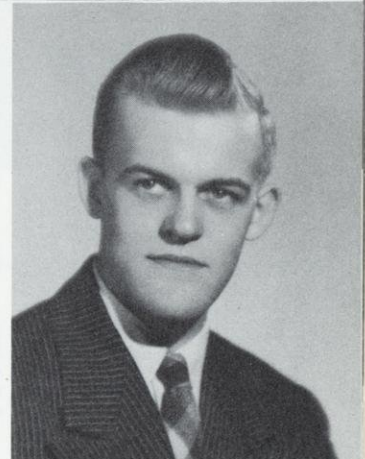
We're ready! For a challenge is a challenge

We were ever game sports, you know.
Though underneath all the bravado
and show

We'll cast one look behind,
And as we face the trials of life,
We'll keep Old High in mind.

JACK HANSEN
*Hambone—Did you say Ford?
Ring up a sale!*

Jr. Class Play; (2) W Football 2, 3, 4; (2) W Basketball 1, 2, 3, 4; W Baseball 3, 4; Band 3; Student Council 3; Class President 2; Class Treasurer 3; Sr. Play manager.



EDWARD HIMES
Eddie—Someone's got to be intelligent in this class.

Jr. & Sr. Class Plays; W Football 4; Photography Club 3, 4; Forensics 3, 4; Emerald Echo, Business manager 3, 4; Annual Staff, Sports Editor 4; Library Club 3, 4; Valedictorian.



DOROTHY LUKAS

*Dot—I may look as if I study,
but don't let that fool you.*

G.A.A. 1, 2, 3, 4; Emerald Echo 3; Library Club 3; Glee Club 1, 2; Jr. & Sr. Class Play.

WAYNE JASPERSON

Buster—Girls! I love 'em!

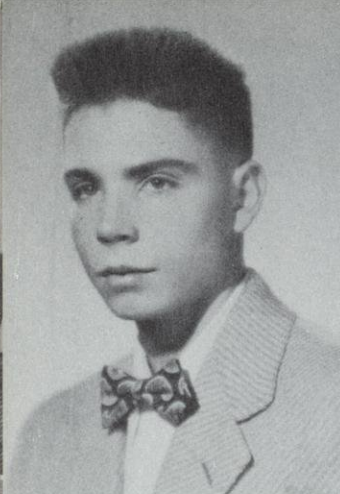
Transferred from Horlick 3; Baseball 3; Photography Club 4.

VIOLET HOFFMAN

Hoffie—Laugh, and the world laughs with you.

Transferred from Rochester 3; Band 3, 4; Drum Majorette 3, 4; G.A.A. 3, 4; Student Council, Secretary 4; Glee Club 3, 4; Sr. Class Play; Forensics 3, 4; Photography Club 4.





ALLEN NEFF

Snuff—Will they ever get that dark room installed?

Transferred from Nathan Hale 3; Photography Club 3, 4; Football 4; Baseball 4; Basketball 3.

CAROL PETERSON

Cookie—A teacher's job for me, until—the right one comes along.

G.A.A. 1, 2, 3, President 4; Band 1, 2, 3, 4; Glee Club 3, 4; Emerald Echo 3, 4; Student Council 4; Forensics 4; Sr. Class Play.

MARY JAYNE ROONEY

Janie—Third finger left hand —has that sparkle now

G.A.A. 1, 2, 3, 4; Cheerleader 2; Photography Club 4; Emerald Echo 3, 4; Jr. & Sr. Class Play; Glee Club 1, 2, 3, 4.

SHIRLEY SCHWEDLER

Brains! Artistic talent! Charm! What more could a blonde desire?

Emerald Echo, Editor 4, Art Editor 4; G.A.A. 1, 2, 3, 4; Glee Club 1, 2; Annual Co-editor 4; Photography Club 4; Library Club 3, 4; Jr. & Sr. Class Play; Student Council 2, Treasurer 3; Class Secretary 3; Salutatorian.

MARY MCGUIRE

Mac—I'm Irish and how could you guess?

Band 1, 2, 3, 4; G.A.A. 1, 2, 3, 4; Glee Club 1, 2, 3, 4; Photography Club 3, 4; Sr. Class Play, Student Coach.

JULIANNE MALONE

Julie—Whenever you're in trouble, just sing your way out. We would if we had her voice.

Jr. & Sr. Class Play; G.A.A. 1, 2, 3, 4; Glee Club 1, 2, 3, 4; Class Vice President 3; Student Council, President 4; Prom Queen 1; Band 1, 2, 3; Emerald Echo 3, 4; Cheerleader 1, 3; Annual Co-editor 4.

Seniors '47

CLASS OFFICERS

President Richard Buenger
Vice-President . . Audre Westerdahl
Secretary Janet Wolf
Treasurer Bernard Dolezal

AUDRE WESTERDAHL

Westy—As happy as the day is long, she never lacks a friend.

G.A.A. 1, 2, 3, 4, Sec.-Treas. 2; Glee Club 1, 2, 3, 4; Class Secretary 1; Photography Club 3, 4; Emerald Echo 3, 4; Annual Staff 4; Jr. Class Play, Student Coach; Sr. Class Play; Class Vice President 4; Student Council 4; Prom Queen.

JANET WOLF

Jan—I don't mind studying, but is there a future in it?

Band 3, 4; Glee Club 3, 4; Student Council 3; Emerald 3, 4; Photography Club 3, 4; Class Secretary 4.





MISS FRIEDRICH'S ADVISORY

Top Row: L. Denney, B. Hembrook, L. Gehrand, M. Becker, E. Best, J. Essman, M. Clements. Middle Row: W. Gross, R. Beck, D. Habecost, L. Huening, L. Bork, I. Helm, T. Felton, J. Hayes. Bottom Row: P. Curnow, J. Ford, G. Hall, L. Horner, L. Hansen, L. Jacobs, C. Hoppe.

The Enterprising Juniors . . .

MISS FISHER'S ADVISORY

Top Row: H. Laux, John Zsido, B. Prill, P. Zakrzewski, J. Shepard, R. LaCombe, Jim Zsido. Middle Row: B. Woods, L. Krautkramer, N. Tesch, P. Meyer, S. Schroeder, D. Maas. Bottom Row: R. Rolison, J. Kopelke, L. Peterson, M. Miller, S. Moore, E. Sheard.





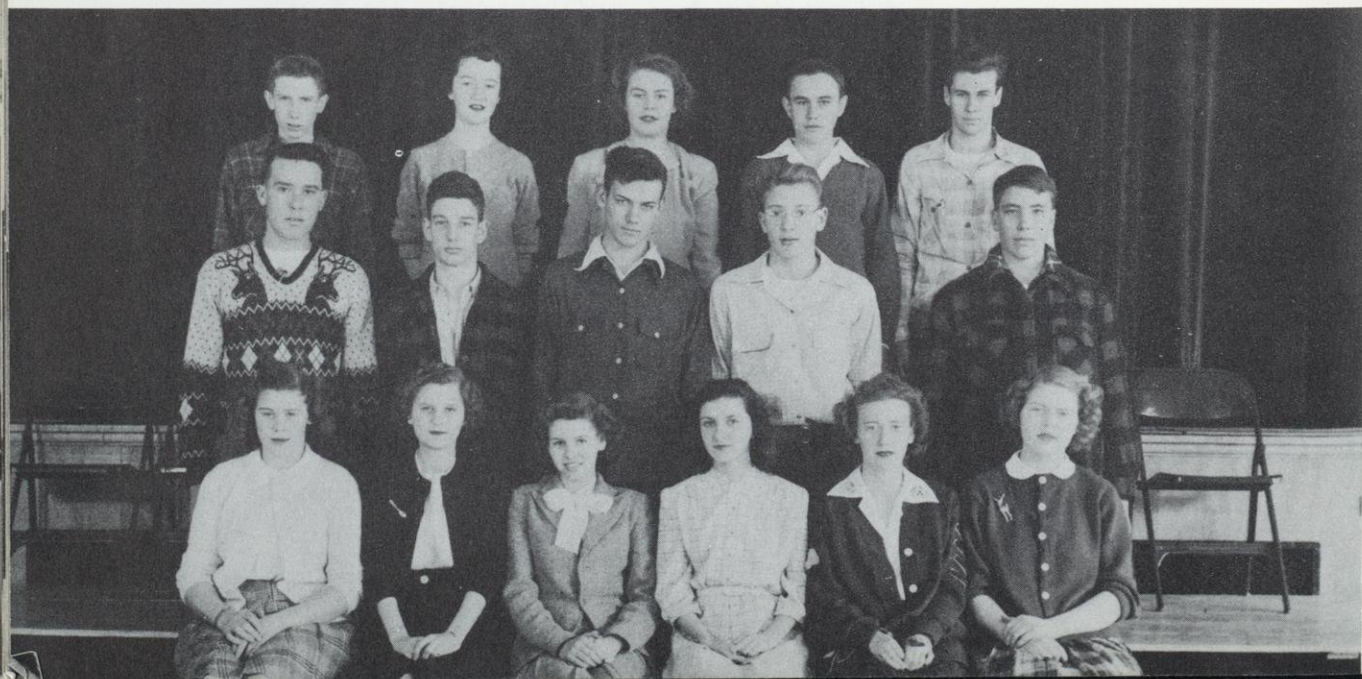
MISS BROWN'S ADVISORY

Top Row: R. Post, D. Neff, Lewis, K. Rintelmann, Welch, Voss, D. Rintelmann, P. Lukas, Ranke. *Middle Row:* B. Olson, Onsgaard, Nelson, M. Moore, M. Patterson, B. Laux, Sykes. *Bottom Row:* Roder, Malchine, Rebstock, Zimmer, A. Patterson, Noll, Weber, E. Olson.

The Brilliant Sophomores . . .

MR. RADCLIFFE'S ADVISORY

Top Row: Braund, Knurr, R. Christensen, Klakner, Fries. *Middle Row:* S. Krautkramer, R. Allen, Bennett, D. Halbach, Burns. *Bottom Row:* Kojis, Engel, H. Hegeman, Krause, Kuntz, E. Gehrand.





MISS HANDRAN'S ADVISORY

Top Row: Leighton, Reesman, Prill, R. Johnson, Kramer, Nelson, G. Laux, Lindner, Roepke. *Middle Row:* R. Woods, Sleik, Mueller, Weinborn, D. Johnson, Wiesenthal, Moulton, Kipp. *Bottom Row:* Schwarz, Mehring, Mitsch, I. Kojis, Sorenson, Kellner, J. Sheard, P. Neff.

And Talented Freshmen . . .

MR. STEIN'S ADVISORY

Top Row: Huelskamp, P. Beck, D. Gehrand, G. Hucksdorf, J. Buenger, L. Henningfield, C. Barthel. *Middle Row:* E. Hegemann, Edwards, Callen, Hammes, Dillar, Hall, Brook, R. Gross. *Bottom Row:* W. Hansen, Bothe, J. Alby, M. Brown, Grieser, Becumont, B. Allen, Clausen.




Senior Honors


EDWARD HIMES . . . To maintain a high scholastic average and at the same time be a leader in the activities of the school indicates the high caliber of the valedictorian of the Class of '47. Edward was active especially in football, journalism, class plays, and forensics.

SHIRLEY SCHWEDLER . . . Likewise, the salutatorian of the Senior Class possessed gifts of leadership and artistic talent that made her a real asset on the newspaper and annual staffs of Waterford High School.

Both of these young people combined character with intelligence and used their abilities for the good of their school.



EDWARD HIMES
Valedictorian



SHIRLEY SCHWEDLER
Salutatorian

Rockrohr-Skarie Award

On the trophy pictured below we read these words:

In Memory

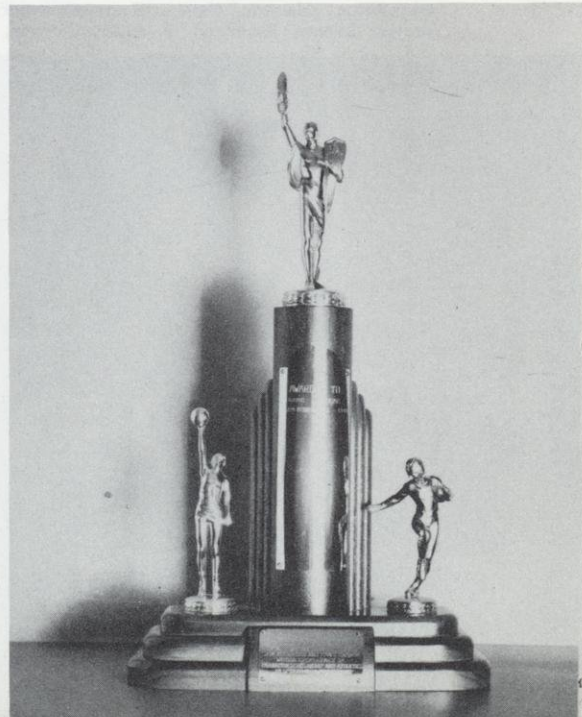
Inscribed above are the names of boys who are carrying on for Jim Rockrohr and Hans Skarie whose excellence of character, scholarship, and athletics inspired this memorial.

1946

The first recipient of the trophy in 1946 was Clem Zebrowski. For 1947, the faculty choice was Richard Beck.

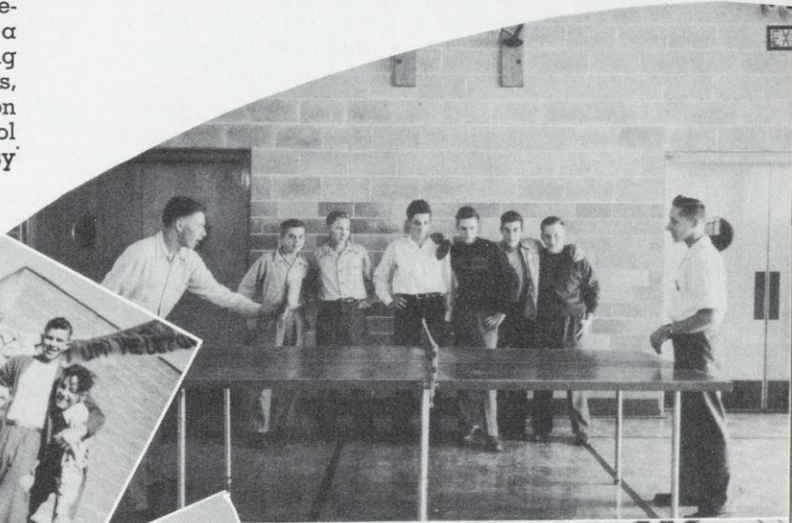


Jim Rockrohr, Hans Skarie



ACTIVITIES

Ping Pong Tournaments, Dancing in the gym, a Junior Boys' Cooking Class, Home-coming floats—these offer a sample of student life during noon hours or activity periods, but Mr. Graf can be relied upon to be waiting with the school bus at the close of each busy day.





Newspaper Staff

During this year and the year previous, the activity period most enjoyed by the students was that one each month set aside for the distribution of the school paper. THE EMERALD ECHO was organized under the faculty adviser, Miss Handran, in 1945.

This fall Shirley Schwedler, assistant editor last year, became editor and Elaine Sheard, assistant editor. Edward Himes was promoted from assistant business manager last year to business manager this year. Mr. Stein is faculty adviser at present.

Our Emerald Echo took on more of a magazine appearance this year. The staff added some new articles such as "Dear Kuzzin," "Birthday Wishes," and "Fashion Notes," a department originated by Mavis Miller.

Sports articles were taken care of by the sports editor, Bob LaCombe. The artistic part of every paper is drawn by Shirley Schwedler and Beverly Woods.

THE EMERALD ECHO made many im-

provements over that of last year. The paper staff purchased a new mimeograph and mimeoscope which makes the type more legible and the covers more attractive. Much work and time is required for the covers. By the overlapping of stencils, it has become possible to make up colored covers. Each different color on the cover must be run through the mimeograph separately.

The members of the paper staff encourage comic strip artists in school to turn in material to be published. The staff is very much interested in the development of student talent and is sure this would be good experience.

Don't you think we have reason to be proud of the fact that our work is sent to and known in twenty-two different places?

Everyone is very concerned about the advancement of our paper, and we are trying to get it up to a standard to get recognition in the contests sponsored by the National Scholastic Press Association.

Top Row: Shepard, Buenger, Habecost, Bork, Tesch, Peterson, Wiesenthal, Nelson, LaCombe, Kramer. Middle Row: Westerdahl, E. Sheard, Schwarz, I. Kojis, S. Schwedler, L. Hansen, Malone, Wolf, Hammes. Bottom Row: B. Woods, B. Allen, Rooney, Miller, Donaldson, Geif, J. Sheard, Moulton.





B. LaCombe, J. Shepard, J. Malone, A. Westerdahl, S. Schwedler, D. Habecost, E. Sheard, D. Maas.

Annual Staff

Now it's time to look into the situation to see just who writes the Annual of Waterford High School.

To start things off, we have our faculty adviser, Miss Ethel Handran, who gets things in swing and catches the writers at their best for their contributions. Next in line come our co-editors, Julie Malone and Shirly Schwedler. It takes real team-work and cooperation to agree on the many angles an Annual consists of. This is no task for them, however, for they are both ever open to suggestions and willing to experiment with them.

A most important department, not to be overlooked, is the Business Department. It is headed by Bob LaCombe, Business Manager, and his advertising solicitors, Dorothy Maas, John Shepard, Elaine Sheard, Edward Himes, and Lila Hansen. It takes perseverance and tact on the part of the solicitors to put over a sale for sponsor-ships. These people really have it!

The faculty and students are taken care of by Audre Westerdahl, who, we must say, has done her job well.

Next in line comes our Sports Editor, Eddie Himes, ably assisted by John Shepard. Our school being one so active in sports, his department is one always kept busy.

Another important person is our Activities Editor, Dorothy Habecost. There must be plenty going on, for she really had her hands full. Nevertheless, we couldn't have picked a more able or willing editor than Dorothy.

To make the project a bit more interesting a Snapshot Contest was held. It was supervised by Mr. Lyle Radcliffe, faculty adviser of our Photography Club. He and his group have produced a splendid array of snapshots. Many may prove quite embarrassing—but then, that's the fun of it!

All put together the job is finished at last and we really must admit, "It was a lot of fun—and work!"



Top Row: Clements, Himes, D. Buenger, Prill, Tesch, Dolezal, Shepard, Christensen, Jasperson.
 Middle Row: Zakrzewski, Westerdahl, Bork, Hansen, S. Schwedler, Kopelke, Maas, Wolf, Huening.
 Bottom Row: Rolfsen, McGuire, Woods, Donaldson, Miller, Geif, Rooney, S. Moore.

Photography Club

The Photography Club, organized in 1945 by Mr. Sholes began its second year of work with Mr. Radcliffe in charge. In the first project, they equipped a dark room so that students could experiment in the developing and printing of their own pictures.

The capable officers include Bernie Dolezal, president; Allan Neff, vice-president; Lila Hansen, secretary; and Ramona Rolfsen, treasurer.

Top Row: Callen, Onsgaard, M. Moore, Christensen, Wolf, Mehring, P. Neff, Welch, Sykes, G. Kojis, B. Dillar, Weinborn, B. Olson, Peterson, Lukas, Hoffman, Patterson.
 Second Row: Mueller, Hammus, Bothe, Wiesenthal, Maas, Laux, E. Gehrand, Klakner, Huening, Kopelke, Woods, Rooney.

Third Row: Donaldson, Prill, I. Kojis, Weber, Mitsch, Moulton, Rolfsen, Hoppe, Tesch, Rintelmann, Best, Noll, McGuire, Roder, E. Olson, Nelson, Kuntz, Becker, Engel, Kipp.

Fourth Row: Krautkramer, Sheard, Habecost, Zakrewski, Edwards, Billings, S. Schwedler, Schroeder, Curnow, Jacobs, Westerdahl, Hansen, L. Gehrand, Sleik, Voss, Malone, Meyer, S. Moore, Geif, Krause.

Bottom Row: Kelner, Zimmer, Rebstock, Schwarz, Clausen, Alby, Allen, J. Sheard, Patterson, Hegeman, Beaumont, Brown, Sorenson.

Girls' Athletic Association

The G.A.A. officers for this year were as follows: Carol Jean Peterson, president; Delone Onsgaard, vice-president; Joyce Ford, recording secretary; and Elaine Sheard, treasurer. Miss Brown was the faculty adviser.

In this club, which operates on a point system, every girl gets so many points for participating in sports and for selling candy at games.





Lindner, Shepard, Hembrook, J. Buenger, Halbach, LaCombe, D. Rintelmann, Lewis.

Projector Club

This year Mr. Rintelmann organized a new and interesting club. The members learn how to thread the film through the projector, connect the projector and speaker, and operate the many devices on the machine, such as the reversing mechanism and single frame exposure device. They also learned how to put up the screen and how to operate the volume and tone controls. In addition, they discovered how to splice a film so that if the film broke while they were showing it, they could repair it on the spot.

Now the boys are becoming expert at operating the projector for any films being shown in their classes.

Library Club

The Library Club, under the supervision of Mr. Kostrzak, began its second year of work with the following officers in charge: Shirley Schwedler, president; Audrey Voss, vice-president; and Marjorie Moore, secretary-treasurer.

In every study hall two student librarians take charge of checking out books and periodicals; moreover, they assist in replacing and rearranging books on the shelves.

The library has been completely rearranged, and classification numbers have been added to all of the non-fiction volumes. A card catalogue has been set up and now contains an author and title card for each volume in the library.

Top Row: B. Laux, Billings, Kopelke, Schwarz.
Middle Row: P. Neff, A. Patterson, Malchine, M. Patterson, Kipp.
Bottom Row: J. Sheard, M. Moore, S. Schwedler, Voss, B. Allen.



Drum Majorettes

JEAN KOPELKE

DORIS JOHNSON

JOYCE FORD

BEVERLY WOODS

VIOLET HOFFMAN



Glee Club

It's a grand day when Thursday comes around, because, you see, that's Glee Club day. Approximately thirty girls blend their voices in two or three part harmony in song under the direction of Mr. Dave McElroy, our musical director.

This year our executives are president, Marilyn Kipp, and secretary, Lorraine Peterson. The seating arrangement for practices, usually held on the stage, is in accordance with the voices. They consist of first soprano, second soprano, and alto. Of great importance to the Glee Club are those who come down for special practice to learn their respective parts.

The girls annually attend the South-east-

ern Music Contest held at Whitewater. There are various days at which times the Band, Glee Club, and Vocal soloists attend separately. The contests are held in school rooms, churches, auditoriums, and even in living-rooms of dormitories. After the anxieties of the day have subsided, a long-awaited occasion is presented, at which time students from the numerous schools make new acquaintances and dance their troubles away.

Each year a number is selected by the Department of Music, and also an optional number is requested. This year, Mr. McElroy has chosen "Song of India," and the required number is "Can't Stay Away."

Top Row: Kipp, L. Gehrand, Edwards, Klokner, Christensen, M. Moore, Onsgaard, E. Gehrand, Voss, Welch, Habecost. Second Row: Schwarz, Westerdahl, Wiesenthal, Mueller, Callen, S. Moore, Ford, E. Sheard, Johnson, Rolfsen, Kopelke, Malone, B. Olson, Wolf, Prill. Third Row: Neff, M. Patterson, Hoffman, E. Olson, Geif, Donaldson, Kuntz, McGuire, Engel, Noll, Nelson, Peterson, Rooney, Weinborn, Dillar, Krause. Bottom Row: Clausen, Moulton, Alby, Allen, Zimmer, Beaumont, Sorenson, J. Sheard, Rebstock, A. Patterson, Mitsch, Kojis, Malchine.





*First Row: (Front to back) Lukas, Mitsch, Schroeder, Hansen, Johnson, McGuire, Rebstock. Second Row: Ranke, Cur-
now, Nelson, Wiesenthal, Miller, Habecost. Third Row: E. Gehrand, Hoppe, Wolf, Kojis, Callen, Shepard. Fourth
Row: L. Gehrand, Peterson, Engel, Geif, Olson, Schwarz, Alby. Drum Majorettes: Kopelke, Woods, Johnson, Hoff-
man, Ford, Director Mr. McElroy.*

Band

With twelve new members this year, the W.H.S. band started its practice sessions—only on Wednesdays during the first semester, but during the second semester the schedule included meetings on Tuesdays as well.

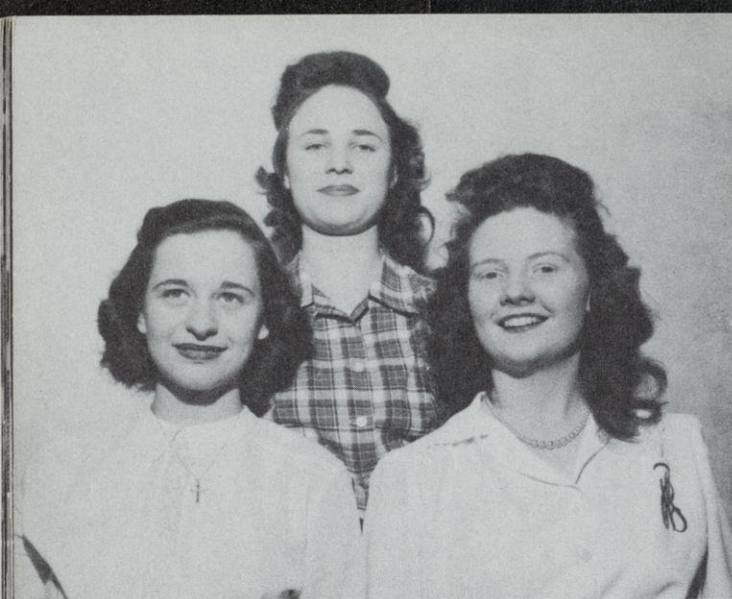
The goal which stimulates all this toil and effort is the South-eastern Wisconsin Band Tournament, held at Whitewater in April of each school year. Here each band competes with those from other schools for honors in concert numbers and selections played while marching. Several of the more talented members take part in solos, duets, trios, and quartets with their instruments such as the saxophones, clarinets, and drums. All who participate in the tournament receive pins, and medals are awarded to first, second, and third prize winners.

As an adjunct to other school activities, the band is nearly indispensable. The color-

ful green and white uniforms were seen heading the Homecoming Parade toward the athletic field and the football game in the fall of the year. In December, we listened to a novelty drum solo by a freshman, Norman Nelson, between the acts of the Junior Class Play.

One very delightful event enjoyed by five members of the band—Elaine Geif, Joan Wiesenthal, Mary McGuire, Dorothy Habecost, and Carol Jean Hoppe—was the trip to Lake Geneva to play with a Mass Band. This was composed of one hundred and twelve members from twelve different bands in this part of the state. It was an unforgettable experience!

The annual picnic at Heg Park in the fall brings out the social side of a band member's personality. This year each one was allowed to bring a guest. Games, interspersed with good things to eat—hot dogs, cider, apples—constituted the entertainment.



Julie Malone, Sallie Moore, Elaine Sheard

Girls' Trio

Three of our most musically inclined girls organized a trio two years ago under the direction of our music director, Mr. McElroy. These girls practice very hard in their free periods on Tuesdays and Thursdays. The group is called upon to sing for different occasions going on within the school, such as class plays, football banquets, and concerts.

Last year the trio obtained a first at Whitewater where they competed with other trios. The song which they sang was "Can't Stay Away." This year the girls will again go to Whitewater where they are entered in the contest. The song they will sing this year is "Year's at the Spring."



Lola Gehrand

Among those taking lessons from Mr. McElroy on musical instruments, we discovered Lola Gehrand who enjoys practicing on her Bass Horn every Tuesday during fourth period. Our eager questioning yielded the information that her favorite number is John Philip Sousa's *Washington Post*, but she needed to practice Ervin Kleffmann's *Legionaire's Parade*, since that was the contest number for this year.

Clarinet Section

Three members of the six-girl clarinet section of the W.H.S. band are freshmen. Maybe that is why there was so much practicing in the gym before the band tournament at Whitewater in April. Mary McGuire played a clarinet solo; Joan Alby and Joyce Callen played a duet; and the quartet composed of Mary McGuire, Dorothy Habecost, Barbara Rebstock, and Irene Schwarz also competed at Whitewater. They did a very good job this year under the direction of Mr. McElroy.

M. McGuire

D. Habecost

J. Callen

I. Schwarz





Top Row: Himes, Shepard, Hall Torgerson, J. Buenger. Middle Row: Malchine, Voss, E. Gehrand, Hoppe, Ford, Tesch. Bottom Row: Billings, J. Sheard, Hoffman, Schwarz, Callen, K. Rintelmann.

Forensics

One of the many activities looked forward to by our students is forensics. The speakers and declaimers pick their speeches at semester time and work on them until the first part of March. Then a school contest is held in which the two best are picked from each of the groups of extemporaneous reading, humorous declamation, serious declamation, and oratory.

Extemporaneous readers are given several selections and prepare them for about an hour. Then they must read them as clearly and interestingly as possible to an audience.

Serious declamation, humorous declamation, and oratory are more difficult, though, because the selections must be memorized and careful attention given to movements of the hands and facial expression.

The eight students from Waterford who traveled to the League Contest, held March 18 at Walworth, were Eddie Himes and Larry Hall, humorous declamation; Violet Hoffman and Jean Sheard, serious declamation; Beverly Billings and Mavis Miller, extemporaneous reading; Robert Torgerson and Nancy Tesch, oratory. They competed with students from other schools,

including besides Waterford—Walworth, Sharon, Darien, Palmyra, and Clinton.

If a student wins an A rating, he goes on to the District Contest at Fort Atkinson and perhaps to the State Contest held at Madison.

Last year, two of the students, Beverly Billings and Violet Hoffman, got A's in the League Contest and went on to get B's at Fort Atkinson. Clem Zebrowski, also received an A in oratory in the League Contest.

Violet Hoffman again received an A at the League Contest this year, and she went on to get B at the District Contest, held at Fort Atkinson.

Besides having fun on the excursions to the various places where the contests are held, the pupils gain experience in speaking by watching the attributes and mistakes of others.

We have had forensics at Waterford for only two years, but in the not too distant future we know that Waterford will become a leading school in this pleasurable activity under the capable direction of Miss Handran.



LaCombe, Ford, Love, Sheard, Schroeder, Beck, Hayes, Miss Friedrich, Hoppe, Farrell, Hembrook, Rolfson, Shepard, Maas.

Junior Class Play

The hour is midnight. The old house is dark and deserted. Suddenly the stillness is broken by a shrill and terrifying scream. And then . . . Yes, you guessed it. The Junior Class Play was a terrifying success. You understand, of course, that it was the mystery angle that was terrifying; and the entire cast that made it a success.

The very fitting title was "Dead of the Night", written by James Reach. It was described as ". . . a chilling, thrilling, mystifying evening's entertainment, containing some of the funniest, most side-splitting comedy scenes you've ever witnessed". With comments like that, you don't know what you missed if you didn't see *Dead of the Night*. It was presented November 21 and 22, 1946, in the Waterford High School gym.

To produce such a play, naturally you have to have a very capable cast—such as the juniors were able to provide. Alice Gardner, Ramona Rolfson, a young writer, was the first one planning to go out to the mansion, accompanied by Sofie Schroeder, her colored maid. At the Manor the lunatics who made the play more interesting were persons who thought they were the persons they impersonated, such as, Evelyn Best, Pocohantas; John Hayes, Hitler; Richard Beck, Mussolini; Carol Jean Hope, Queen Elizabeth; and William Farrell, Rockefeller.

The psychiatrist in charge was Larry Love, Dr. Edward Lawson; the housekeeper, Joyce Ford; and Glenn, John Shepard; Steve Holbrook, Robert Hembrook; and Roberta Best, Elaine Sheard, helped to complete the cast which produced *Dead of the Night*.

The entire cast presented their Directress, Miss Friedrich, with a leather wallet. Dorothy Maas was Student Coach.

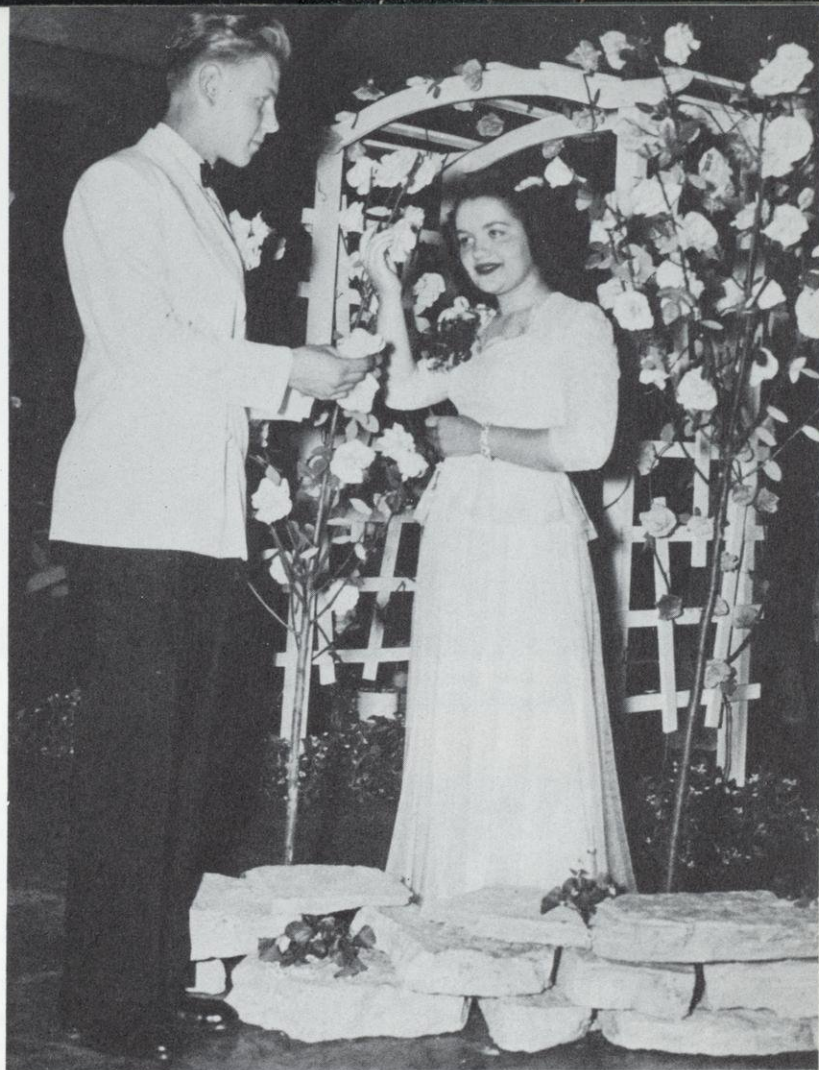
Rolfson, Shepard

Hembrook



The lively anticipation of throngs of couples was sufficiently satisfied by the colorful and melodious "Moonlight and Roses" Prom, held in the Waterford High School Gymnasium, Thursday evening, May 9, 1946. Bud Wilbur's orchestra furnished the music.

The main attraction was the Rose Garden in the center of the floor. This consisted of a white gateway trellis adorned with roses and green leaves. A carpet of green grass lay on the floor of the "Summer House," through which the King, Jim Christensen, and his Queen, Marilyn Noll, led the Grand March.



Jim Christensen, Marilyn Noll

Junior Prom

Palm trees waving in the breeze! Soft music! Low lights! Think you are in Hawaii? Well, almost! You are in the Waterford High School Gym at the Junior Prom. You see the Juniors chose Hawaii as the setting for their promenade this year.

The juniors decided the main attraction, a beautiful little pond of rippling blue water covered with lily pads, would be placed in the middle of the gym. A picturesque rustic foot-bridge would cross the little pond. Scattered about the gym would be beautiful palms and potted ferns, among which the dancers could sway to Hawaiian melodies.

To provide the soft music for the dancers,

there would be the orchestra of Bud Wilbur. The dance programs would carry out the theme of Hawaii through little girls with button faces and yarn-grass skirts.

Who will reign as Queen over the 1947 Hawaiian Prom is still shrouded in mystery as we go to press, for our King, Jim Zsido, maintains an eloquent silence on that subject.

When it comes to a committee for the Junior Prom at Waterford High, the entire Junior Class acts as one, under the guiding direction of our experienced interior decorator, Miss Fisher.



Top Row: Hoffman, Malone, Buenger, Himes, Hansen, McGuire. Bottom Row: Peterson, Lukas, Westerdahl, Billings, Schwedler.

Senior Class Play

If you are young and single, what would you do if you fell in love with five girls at the same time and knew that all five were in love with you? If you are a young lady, what would you do if you fell in love with a handsome, wealthy, young man, and your sisters were all in love with him, too? Well, that was the situation in "He Couldn't Marry Five," produced by the Senior Class of '47. It was a laugh riot in three acts.

It seems that all five daughters in the Barton family were in love with their father's boss's son, who strangely enough, was in love with all five of them. Adding to the joy of this situation, was an aunt, who was a man-hater, and the mother, who urged her daughters to marry this "million-dollar-man." Poor Granny! She had an awful time trying to straighten things out.

In the end, however, things turned out sweet and rosy, and none would have him but one. She was very happy to marry him, and of course the other daughters were overjoyed to have him in the family.

The cast included a handsome vital mother, an effusive faddist of forty-five. Her name is Connie Barton (Audre Westerdahl). In a gay, charming way, she is slightly "cuckoo" on the subject of astrology. She is married to Ralph Barton (Eddie Himes). He is kind hearted and good-natured, but worries over the large family he has to support.

Five lovely daughters have come to bless this happy couple. April (Julie Malone) is the first born. She is a vivacious young miss of twenty-two, pretty but "bugs" about acting. Next in line is May (Mary Jayne Rooney). She is twenty, pretty, with a one-track mind and a seething ambition to become a great ballerina. June (Dorothy Lukas) is the artist of the family. She is also pretty but a temperamental little miss of nineteen.

Then comes Lois (Shirley Schwedler), who is eighteen and a half—sober and reliable, methodical and deadly serious. She is interested in first aid and home nursing. Last but by no means least is Leona (Violet Hoffman). She is a seventeen-year-old problem child who loves horses and the great outdoors. She is cute, slangy, and pretty in a wild sort of way.

Because of their interest in their careers, these girls have no time for men. That is, until their father brings home the son of his boss. His name is Donald Regan (Richard Buenger). He is good-looking, well-built, and twenty-two years of age. He is sensitive, good-natured, and has fine ideals and principles. From the very beginning, he is heckled by Etta Barton (Beverly Billings). She detests men and does everything in her power to postpone the day when her nieces will fall in love. She is tall, straight, prim, and assertive—about forty years of age.

With all these "characters" around, there has to be one normal one. She is Granny (Carol Peterson). She is lovable, soft-spoken, and intelligent—a kindly old lady with beautiful white hair, the peace-maker of the family.

It was presented on two nights, March 27 and 28. Judging from the crowded attendance and the hilarious audience, it was thoroughly enjoyed by all.

It was a pleasure for the cast to work with so pleasant and amiable a directress as Miss Friedrich. The cast presented her with a bouquet of American Beauty roses.

Mary McGuire, the student coach, was a great help to the directress and to the entire cast.



Peterson, Maas, LaCombe, Malone, Hoffman, J. Buenger, R. Christensen, Hoppe. Absent from picture: Duffrin, J. Schwedler, Torgerson.

Student Council

The purpose of the Student Council, according to its constitution, is to inspire student leadership, responsibility, cooperation, and loyalty to the school. It promotes school activities and suggests ideas for the improvement of student morale.

The Senior Class supplies four of the eleven members; the Junior Class, three; and the Sophomore and Freshman Classes each have two members. Each member should typify a high standard of personal-

ity, achievement, and conduct. A failing grade in one subject disqualifies a person from serving. The election to membership is for one semester only, but there is no limit as to the number of times one may serve.

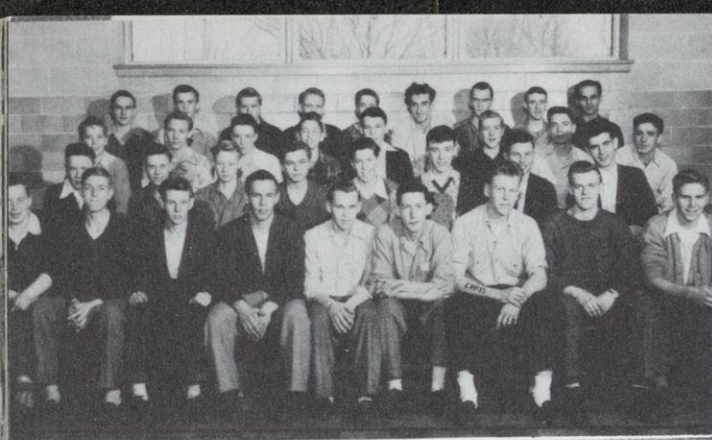
The chief activities conducted this year were the Homecoming Dance, the Magazine Drive, and the dances given after basketball games held in our gymnasium.

The officers for both semesters were as follows:

President	Julie Malone, Dick Buenger
Secretary	Violet Hoffman, Elaine Sheard
Treasurer	Bob LaCombe, Sallie Moore

Standing: C. Fitzgerald, J. Schwedler, E. Sheard, R. Beck. Seated: R. Post, L. Hall, R. Buenger, A. Westerdahl, M. Kipp, S. Moore.





BOWLING TEAM—BOYS

Top Row: Knurr, Brook, H. Laux, Shepard, Lewis, Behling, Allen, La-Combe, Jim Zsido. Second Row: Nelson, W. Gross, Hall, Rintelmann, Roepke, G. Laux, Neff, Breiling. Third Row: Reesman, Mayer, R. Gross, Felton, Hembrook, Essman, Greil, Dolezal. Bottom Row: Himes, Ranke, Hegemann, Beck, John Zsido, Love, Christensen, Hansen, Buenger.

BOWLING TEAM—GIRLS

Top Row: Schroeder, Becker, Ford, Noll, Kipp, Christensen, Malone. Second Row: Rolfson, Woods, Zakrzewski, Habecost, Meyer, Westerdahl, Jacobs, Moore. Bottom Row: Zimmer, Rebstock, Hoffman, Hoppe, Peterson, Crema, Kopelke.

Bowling

BOYS' TEAMS . . . About thirty-five boys belong to the six leagues which bowl on Monday afternoons at four o'clock.

The teams are captained by Bernie Dolezal, Harry Laux, Gene Ranke, Bill Allen, Richard Beck, and Tom Felton. The end of the season saw Team 6, captained by Bernard Dolezal, and Team 1, led by William Allen, tied for first place honors.

With the co-operation of the operator of the bowling alley, Coach Mingst, and Mr. Rintelmann, this sport has developed so much that on Mondays all you hear is "Who sits out tonight?" "Whom do we bowl tonight?" "How many pins do we spot them?" We hope this will continue to be a popular sport.

GIRLS' TEAMS . . . The teams were organized by Coach Mingst in January, and the girls will continue the sport until school ends in May if they wish. Jean Kopelke, secretary, has done a very nice job of figuring out the averages for each of the girls and for the teams. The leading team thus far is Team Three, captained by Sofie Schroeder. All the girls, whether they are good bowlers or not, seem to enjoy bowling and they will be sorry when the season ends.

Cheerleaders

To lead the yells and cheers which urge our team on to victory, we have our cheerleaders who are bubbling over with school spirit. Those elected by popular vote this year are Sally Moore, Ramona Rolfson, and Lylace Jacobs, juniors, and Marjorie Moore, a sophomore.

The contestants for the cheer-leading contest are any girls or boys of any class who would like to be cheerleaders. These people are coached either in groups or singly for a short period of time by Miss Friedrich, the faculty adviser. When the great day arrives, the whole school is assembled in the gym, where each one displays his talents in cheer-leading. Votes are cast, and the four people receiving the highest number of votes are our cheer-leaders for the year.

Sallie Moore

Ramona Rolfson

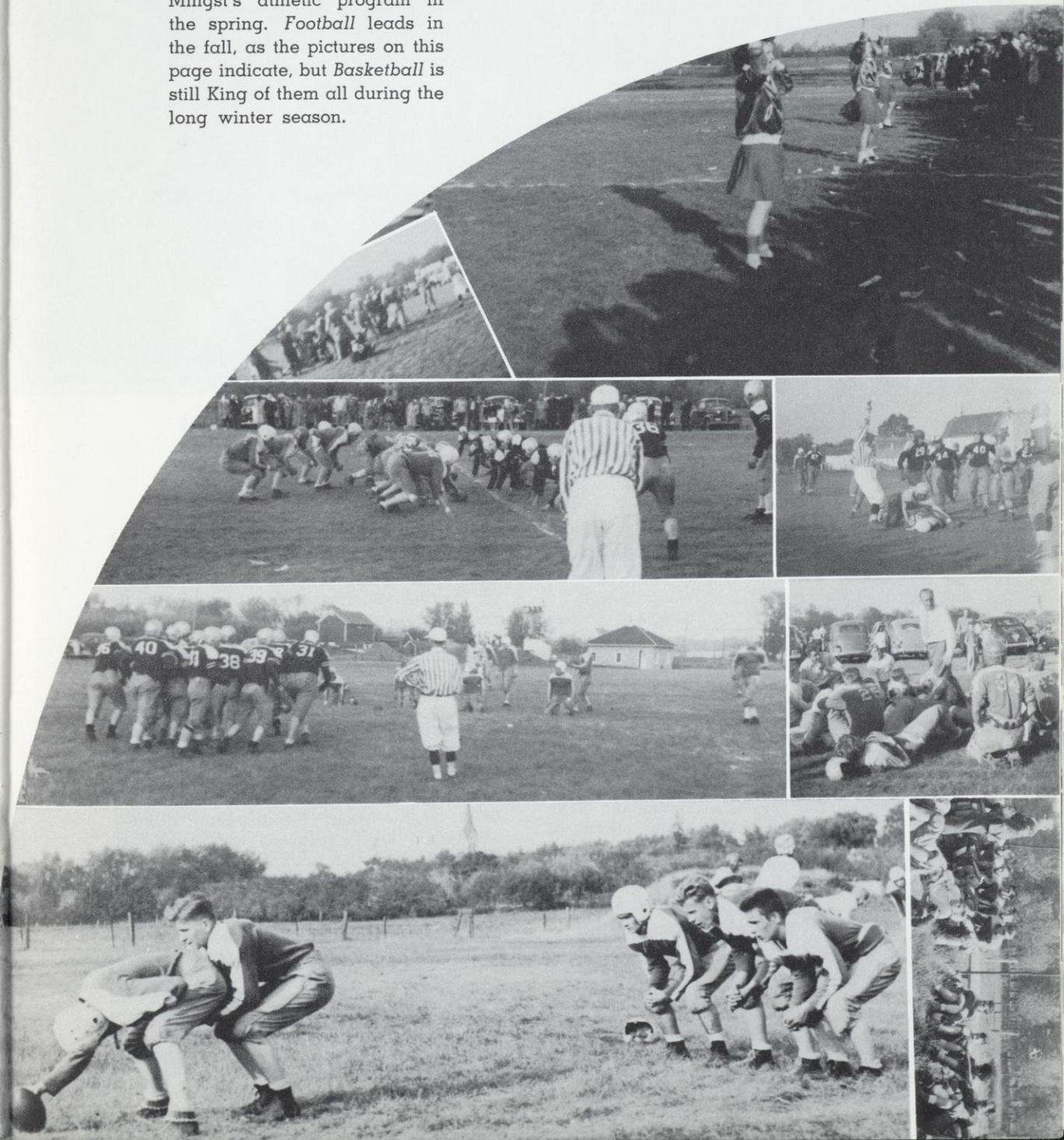
Margie Moore

Lylace Jacobs



ATHLETICS

This year saw another sport, *Baseball* added to Coach Mingst's athletic program in the spring. *Football* leads in the fall, as the pictures on this page indicate, but *Basketball* is still King of them all during the long winter season.





Top Row: G. Laux, Lukas, Hall, Hegeman, Roepke, Lindner, Shepard. Middle Row: LaCombe (Manager), P. Beck, Himes, Hembrook, Dolezal, Essman, H. Laux, Denny, Coach Mingst. Bottom Row: Felton, Christensen, Beck, Jim Zsido, R. Buenger, Hansen, John Zsido, Allen, Krautkramer,

Football

CONFERENCE STANDINGS

Team	Won	Lost	Tied
Wilmot	4	0	1
East Troy	4	1	
Rochester	3	1	1
Waterford	2	3	
Mukwonago	1	4	
Union Grove	0	5	

A year of opportunity comes very seldom, and this just didn't happen to be Waterford's year.

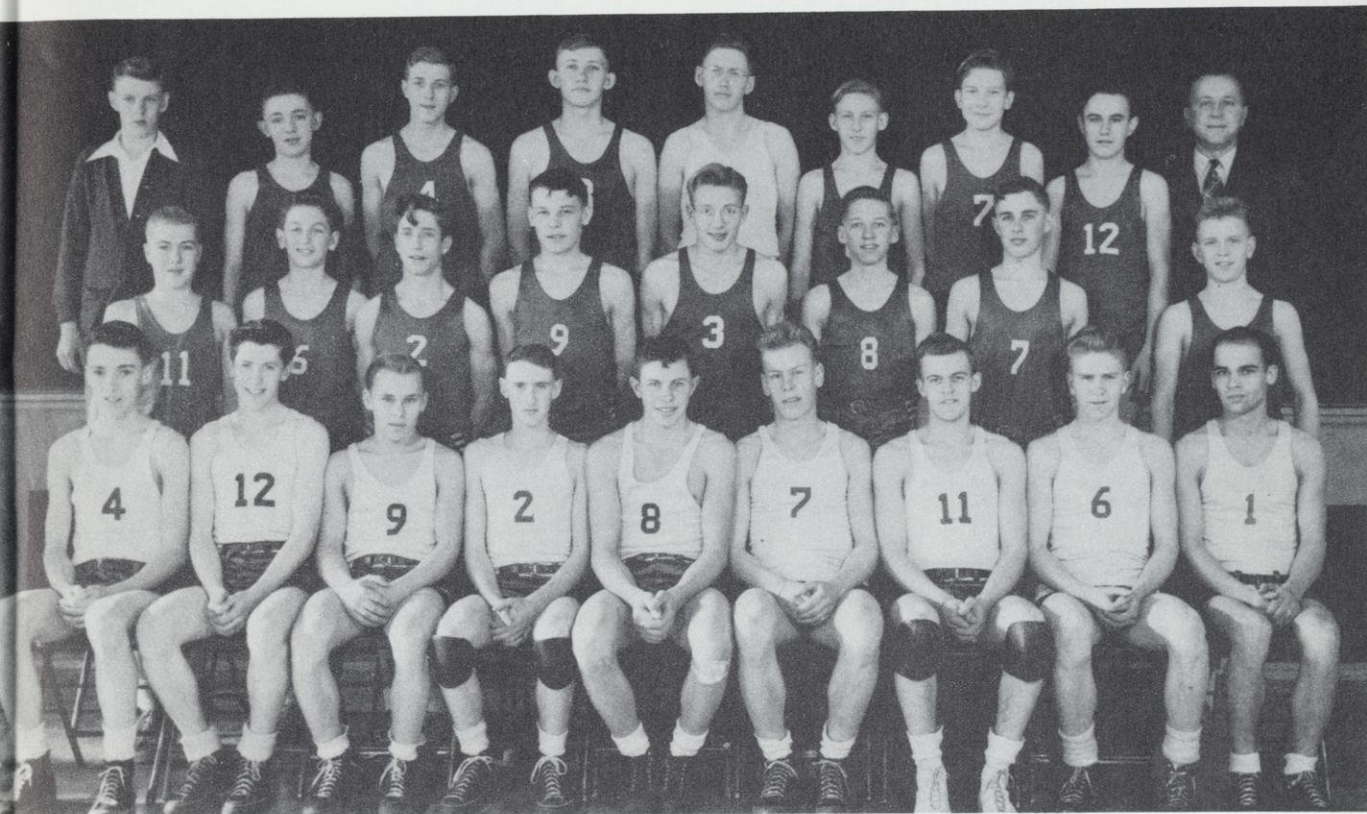
Without any practice games, the team encountered a heavy Rochester eleven at Rochester and emerged on the short end of a 7-0 score. Score at half, 0-0—fumble on our 45 put them in position for fatal march—Johnnie Zsido outstanding in line—Christensen in passing and kicking.

With about the lightest team in the league—it averaged only 145 pounds—we went into the game with Wilmot at Waterford, encountering a strong passing team that went over our heads to hand us our worst defeat in years—Score, 33-0. Poor line blocking—good sportsmanship.

After losing two games, the Green and White wave rolled over Union Grove, 20-6. Highlights—Bizz's 35 yard touchdown pass to Hansen—Buenger's and Allen's touchdown-runs—buckling of line against Union Grove giants—lots of townspeople watching the boys.

Determined to even things up, the team went to Mukwonago and brought home a 7-0 win to give us a .500 rating so far. Loads of pep from our rooters—keeping up tradition, another home-coming game lost—great amount of fighting spirit in both teams.

A really great Homecoming game—Waterford was outclassed and outplayed but not out of the running until the fourth quarter—Trojans scored early in first period on quarter-back sneak—no more scoring until fourth quarter when East Troy again scored on a pass to put us behind by two touchdowns. Our team then started to click—drive down field climaxed by pass to Beck in end zone. Highlight of game—85 yard kickoff return by East Troy made final score 19-6, their favor. Christensen elected captain of a team that—"may not be champs, but they are tops with us".



Top Row: Hegeman (Manager), Prill, Ranke, Barthel, Denny, Lindner, Gehrand, Knurr, Coach Mingst. Middle Row: G. Laux, Rintelmann, Lewis, Roepke, Halbach, Lukas, Post, J. Buenger. Bottom Row: Essman, Hembrook, John Zsido, LaCombe, Greil, Christensen, Hansen, R. Buenger, Jim Zsido.

Basketball

To be a championship team takes a few breaks and some slight assistance from Lady Luck. Although Waterford didn't have much of this, our FIVE really made a good showing.

Made up of three seniors and two juniors, the team tied in conference standings for third place with East Troy—winning 6 and losing 6. On November 5, the team had its first practice game with Lutheran High of Racine and lost by a 26-23 count because of Lutheran's rally in the last quarter. Bizz had 10 points—6 on free throws.

Our first conference game was a toughie, Rochester—at Rochester. Lost, 33-19. Then Mukwonago turned back the Mingstmen in their second encounter 32-21—but play was 100% better.

For the first win, a weak Grover team was handed a 46-19 setback—Christie high scorer with 11 points—most exciting part was second-team game which Union Grove won, 11-9.

Another conference win over Norris evened up the averages—Christie high again with 11 points—final score was 37-25. For their third win, the Green and White plucked

down a taller East Troy team for a 33-18 win—La Combe hot on hook shots—top pointer with 15 tallies.

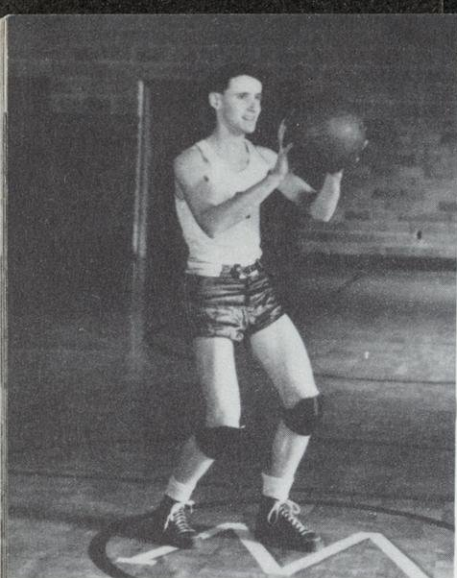
Next came Wilmot, with an unblemished record—it stayed that way with a 67-36 score—Christensen high with 16 marks. Score at quarter 7-6, Waterford ahead—Surprise! Our B team won!

After starting slow, the team took St. Mary's of Burlington, 27-18. After that a pair of defeats—by Williams Bay, 41-39 and by Walworth, 31-26. Superior height won both games.

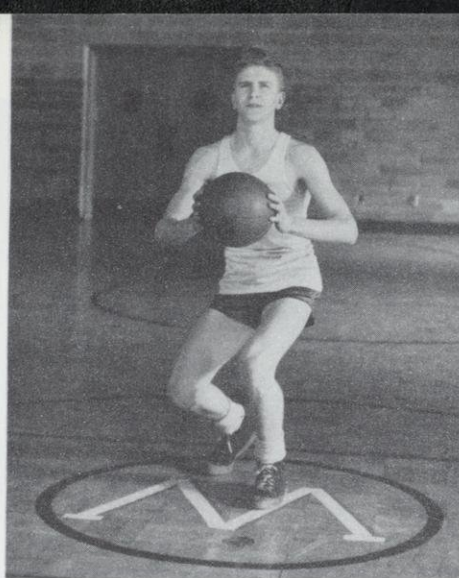
In their return engagement, Waterford plastered the Aggies—26-19 with good rebound work and ball handling. For an exciting game we'll pick the second St. Mary's game which took an overtime period for our cagers to win 42-40.

Another creditable performance was turned in as Waterford scalped the "Mucks" by a 43-38 tune.

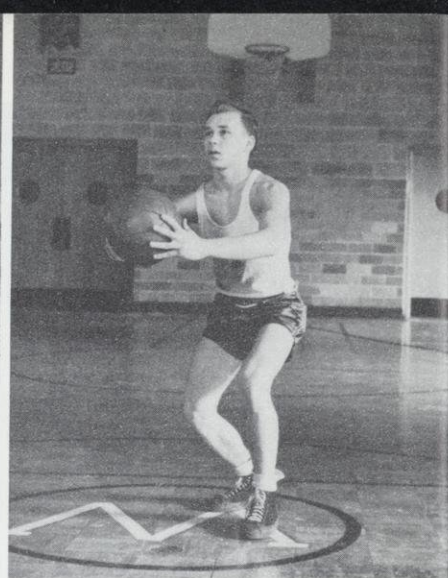
With our two regulars off and generally cold shooting, Union Grove took a 25-21 decision at Sturtevant—Hansen hot with 9 points.



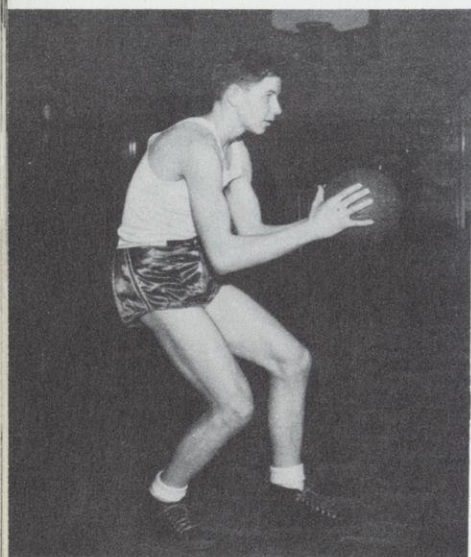
BOB LACOMBE



DICK BUENGER



JOHN ZSIDO



JOHN GREIL

After capturing a 33-27 game from Norris Farm, the boys fell victim to the Trojans by a 35-30 count. Our last conference game was won by Wilmot, but they were held down to a 43-32 score, and our team wasn't out of the running until the last three minutes.

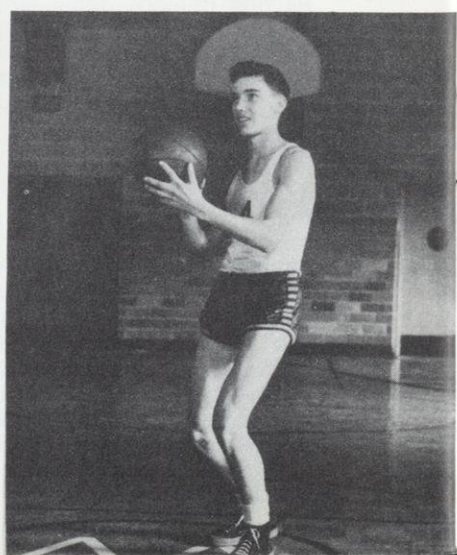
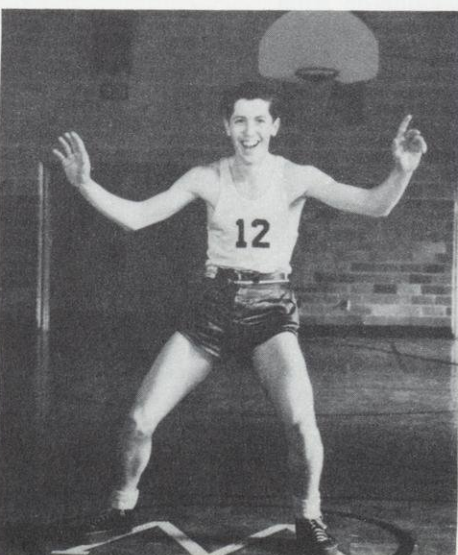
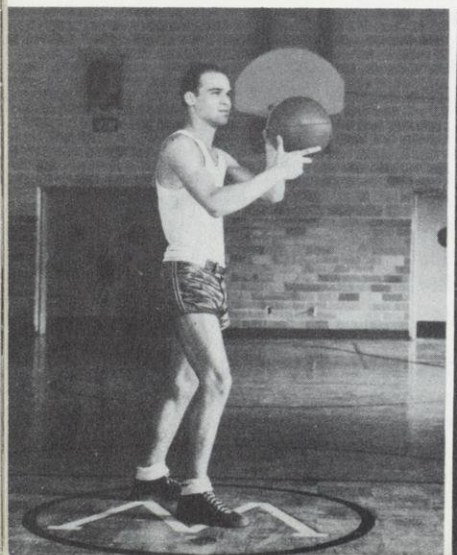
On the 19th, 20th, and 22nd of February, Waterford traveled to East Troy for the tournament. Turned back by East Troy 36-31 in the initial contest, the team found the range and knocked down the Grovers 30-23. For our final game with Norris, the FIVE came out on the long end of a 46-40 score to take the consolation championship. Bob LaCombe was elected captain of team—Christie an all-tournament selection for center—also one of league's leading scorers—our final rating, won 10 and lost 10.

The Second Team was a real surprise—made up of freshmen and sophomores, it did its share of taking victories—a good start for a strong varsity. More power to them—and our congratulations to the spectators who showed good sportsmanship—win or lose.

JIM ZSIDO

BOB HEMBROOK

JOHN ESSMAN





Top Row: Hegeman (Manager), John Zsido, Essman, Jim Zsido, Hembrook, Coach Mingst.
Bottom Row: LaCombe, Greil, Christensen, D. Buenger, Hansen.

GAME SUMMARIES

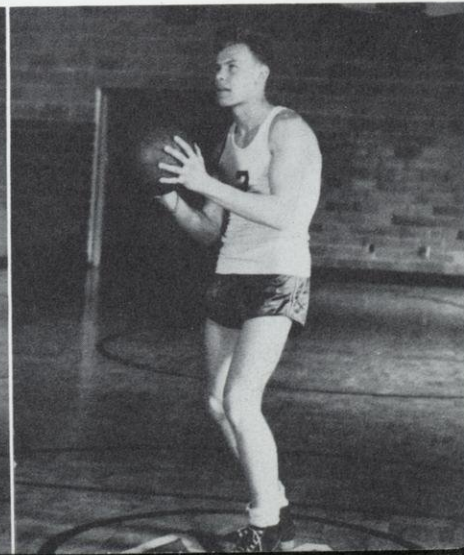
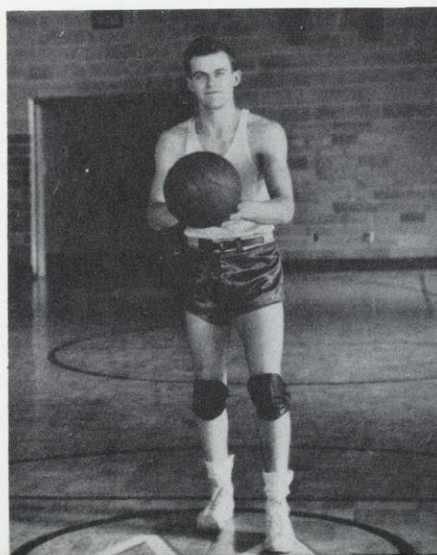
Team	We	They	Team	We	They
Racine Lutheran	23	26	Rochester (C)	26	19
Rochester (C)	19	33	St. Mary's	42	40
Mukwonago (C)	21	32	Mukwonago (C)	43	38
Union Grove (C)	46	19	Union Grove (C)	21	25
Norris Farm (C)	37	25	Norris Farm (C)	33	27
East Troy (C)	33	18	East Troy (C)	30	35
Wilmot (C)	36	67	Wilmot (C)	32	43
St. Mary's	27	18	East Troy (Tournament)	31	36
Williams Bay	39	41	Union Grove (Tournament)	30	23
Walworth	26	31	Norris Farm (Tournament)	46	40
Total Points				661	656

JACK HANSEN

JIM CHRISTENSEN

CONFERENCE STANDINGS

Team	Won	Lost
Wilmot	12	0
Rochester	8	4
Waterford	6	6
East Troy	6	6
Mukwonago	4	8
Norris Farm	3	9
Union Grove	3	9





Top Row: Clements, LaCombe, Hansen, D. Buenger, Christensen, Krautkramer, J. Greil, Essman, Hembrook.
Bottom Row: Lewis, Halbach, Allen, Jasperson, Shepard, John Zsido, Jim Zsido.

Baseball

Schedule for 1947

April 11Norris Farm—here
April 18Mukwonago—there
April 25East Troy—here

April 29Wilmot—there
May 9Union Grove—here
May 16Rochester—there

With baseball a forgotten sport at Waterford for four years, Coach Mingst had on his hands, last spring, an inexperienced group, nevertheless eager to develop their latent abilities.

The team was composed mostly of underclassmen who made a pretty good record by winning two and losing four games. For our first game, we were trimmed by a flashy Mukwonago Nine, 24 to 1. The lone run was made by Hansen with some clever base stealing. After that the team traveled to East Troy and Union Grove and lost both games by narrow margins. For our best game of the season our traditional rival, Rochester, was whittled down to size in an extra inning game. We then fell victim to the Championship Wilmot team and were beaten badly. Our other win came at the expense of Norris Farm.

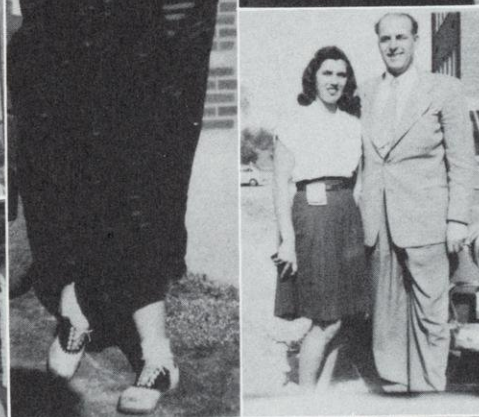
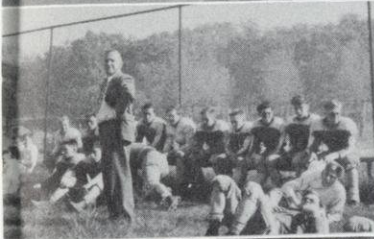
Those earning letters were Catcher Dave

Halbach, 2nd baseman Donnie Lewis, 1st baseman Richard Buenger, 3rd basemen Sylvester Krautkramer and Bob LaCombe, shortstop Clemens Zebrowski, and outfielders Richard Beck, Mickey Clements, and Jim Christensen. The team elected Clemens Zebrowski as Honorary Captain.

This year all the lettermen are back with the exception of Clemens Zebrowski. In addition to these, there is a large group of freshmen and new students who will work their hardest to win berths on the team.

The baseball fans of Waterford are expecting the boys to make a determined bid for the Championship, as the team that is fielded this year will not be lacking experience. If teamwork and spirit can earn a Title, then Waterford should be on top of the baseball heap when the season ends. The results of last year's games are as follows:

	We	They		We	They
Mukwonago	1	24	Wilmot	3	19
East Troy	12	13	Rochester Aggies	6	5
Union Grove	2	7	Norris Farm	6	5





Sponsorships

Academy Cleaners	Burlington
Andrewson's Store	North Cape
Ann Evans Beauty Shop, Luella Thompson, Prop.	Waterford
Arcade Restaurant, Harlow Albee, Mgr.	Waterford
Bakke Electric Co., Ben Bakke, Prop.	Waterford
Battery Service Station	Burlington
Bilitz Bakery, H. J. Bilitz, Prop.	Waterford
B & K Shoe Store	Burlington
Cunningham Buick Co.	Burlington
Dick's Locker and Market	Waterford and Burlington
W. J. Edwards Co., Groceries	Waterford
Elite Sweet Shop	Burlington
Nick Engler	Appleton
Fashion Shop	Burlington
Floyd's Restaurant, Wilbur Moulton, Prop.	Waterford
Foat's Sport Shop, Irving T. Foat, Prop.	Waterford
Gamble Store, L. R. Wiesenthal, Prop.	Waterford
Graf's Garage, O. R. Graf, Prop.	Waterford
Dr. J. L. Hall	Waterford
Hansen's Ford Garage	Waterford
Hart's Windlake Grocery	Windlake
Haskell's	Burlington
Everett J. Hegemann, Builder	Waterford
Helen's Style and Gift Shoppe, Helen Walle, Prop.	Waterford
Lee N. Herrman, Jeweler	Burlington
Walter E. Hills, Service Station	Waterford
Hotel Badger	Burlington
Hotel Burlington	Burlington
Dr. M. T. Huber	Waterford
I.G.A. Super Market, Miles Anderson	Waterford
I.G.A. Super Market, Ed. Rockrohr	Waterford
Nelson H. Johnson	Waterford
Johnson Service Co.	Milwaukee
Kilgore & Easterday Office Equipment	Racine
A. C. Lotsch, Representing Sinclair Refining Co.	Waterford
Thos. J. Maas & Sons, Farm Equipment	Waterford
Dr. F. A. Malone	Waterford

Sponsorships

Harry W. Mealy, Funeral Home—Ambulance Service	Waterford
Midland Coach Lines	Burlington
Montgomery Ward & Co.	Burlington
Noll's Bank	Waterford
Victor A. Nowak, Jewelry Co.	Milwaukee
Old Town Pump Restaurant, Perry and Pearl Fell	Burlington
Arthur R. Perry, Optometrist	Burlington
Pieters Brothers Dry Goods	Burlington
John E. Platz, Photographer	Milwaukee
Plaza Theatre	Burlington
A. M. Rittman & Son, Waterford	Waterford
Rochester Mills	Rochester
Rueter & Hannas	Burlington
Sears	Burlington
A. G. Scheele Hardware Co.	Waterford
Seidel Dairy, Ed. Seidel & Son, Prop.	Waterford
Sholtis Terrace Garden Floral Service	Waterford
Smith-Huening Agency	Waterford
Steinke Hardware Company	Waterford
Ray Swenson, Jeweler	Burlington
Taege's Wagon Wheel Tea Room	Waterford
Trimborn Electric Co., H. W. Trimborn, Prop.	Waterford
Union Chevrolet Co., Byron Roberts, Prop.	Burlington
Universal Service Garage, A. F. Becker, Prop.	Waterford
Edward T. Van Halen, Inc.	Milwaukee
E. T. Walsh Machinery Co.	Milwaukee
The Waterford Agency, Freda Rebstock, Prop.	Waterford
Waterford Civic Club	Waterford
Waterford Grill, Paul Snyder, Prop.	Waterford
Waterford Mills	Waterford
The Waterford Post	Waterford
Windlake I. G. A. Store	Windlake
Wilbur Lumber Co.	Waterford
Winkler & Warren Dairy	Burlington
Zimmer's Drug Store, A. W. Zimmer, Prop.	Waterford



