



**LIBRARIES**  
UNIVERSITY OF WISCONSIN - MADISON

## **Furacin Urethral Inserts advertisement.**

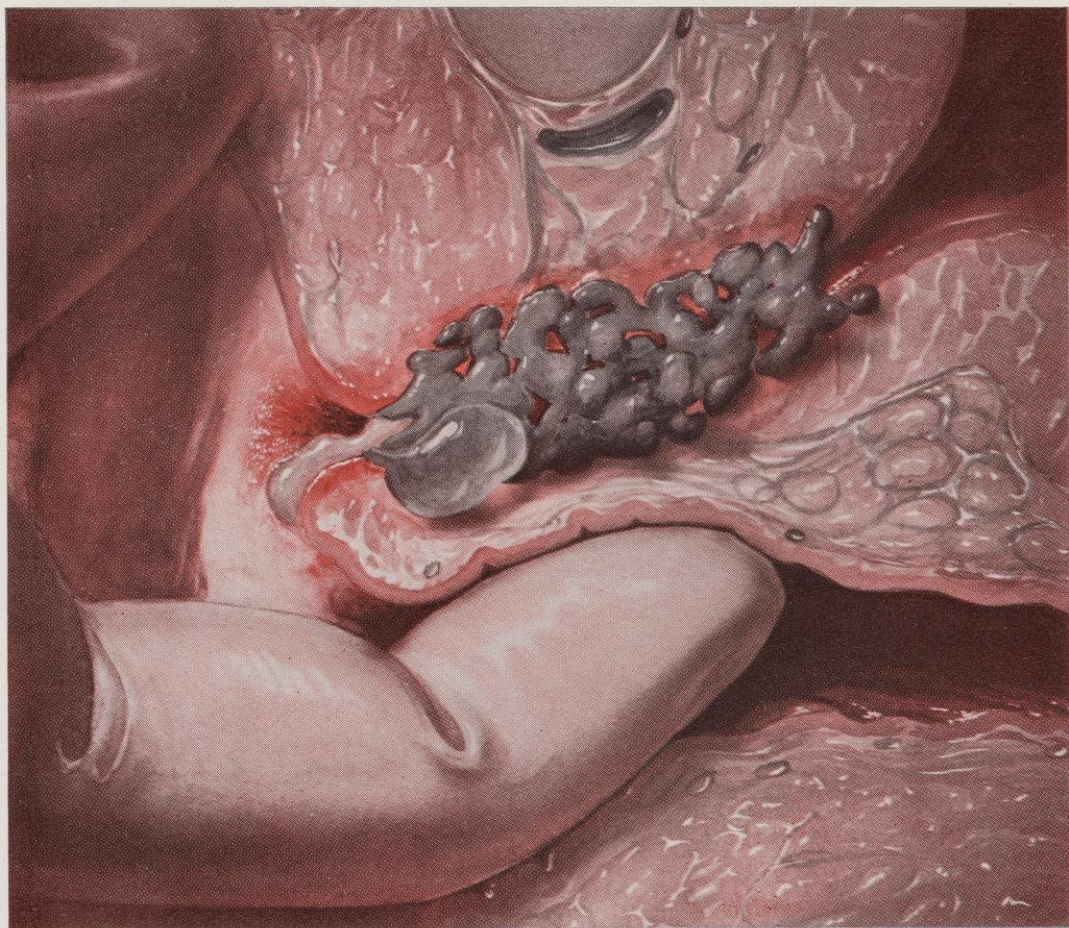
[s.l.]: [s.n.], 1964

<https://digital.library.wisc.edu/1711.dl/CSF5HYEIMJGNV8X>

<http://rightsstatements.org/vocab/InC/1.0/>

The libraries provide public access to a wide range of material, including online exhibits, digitized collections, archival finding aids, our catalog, online articles, and a growing range of materials in many media.

When possible, we provide rights information in catalog records, finding aids, and other metadata that accompanies collections or items. However, it is always the user's obligation to evaluate copyright and rights issues in light of their own use.



## **BACTERIAL URETHRITIS: SIGNS AND SYMPTOMS**

The patient with nongonococcal urethritis may complain of pain and burning on urination, or only be aware of a constant, dull, referred pain in the groin, thighs, lower back or suprapubic region. Typically, the mucosa at the meatus is dull red with a granular or cobblestone appearance. Palpation through the anterior vaginal wall reveals localized tenderness and an irregular thickening caused by involvement of the periurethral glands. While urine specimens are often normal, stripping may elicit purulent or mucoid material at the meatus.

## **BACTERIAL URETHRITIS: SPECIFIC TOPICAL TREATMENT** **FURACIN® URETHRAL INSERTS** **(NITROFURAZONE) antibacterial ■ anesthetic ■ gently dilating**

Each Insert contains nitrofurazone 0.2% (2.6 mg.) and dipherodon hydrochloride 2% (26 mg.) in a water-dispersible base of glyceryl monolaurate and sorbethan (4) monostearate (Tween 61). Box of 12, each 1.3 Gm. Insert hermetically sealed in aluminum foil.

*Untoward Effects:* Sensitization is infrequent, probably under 1%.

EATON LABORATORIES, Division of The Norwich Pharmacal Company, NORWICH, NEW YORK  
Originators and Developers of The Nitrofurans

