



**LIBRARIES**  
UNIVERSITY OF WISCONSIN - MADISON

## Gentle Annie.

Foster, Stephen Collins, 1826-1864

New York: Firth, Pond and Co. (547 Broadway), 1856

<https://digital.library.wisc.edu/1711.dl/4QRE35IPP4LPS8I>

<http://rightsstatements.org/vocab/NKC/1.0/>

The libraries provide public access to a wide range of material, including online exhibits, digitized collections, archival finding aids, our catalog, online articles, and a growing range of materials in many media.

When possible, we provide rights information in catalog records, finding aids, and other metadata that accompanies collections or items. However, it is always the user's obligation to evaluate copyright and rights issues in light of their own use.

+VYX5  
+M68

FOSTER'S MELODIES.

No. 31.

**GENTLE ANNIE**  
Ballad.

WRITTEN AND COMPOSED BY

**STEPHEN C. FOSTER.**

Also, by the same Author,

"Lula is gone," "I see her still in my Dreams," etc.

PIANO.

GUITAR.

NEW YORK:

Published by FIRTH, POND & Co., No. 547 Broadway.

Pittsburgh,  
H. KLEBER & BRO.

Albany,  
J. H. HIDLEY.

Cincinnati,  
C. Y. FONDA.

Cleveland,  
S. BRAINARD & Co.

St. Louis,  
H. PILCHER & SONS.

C. W. WARNER, Music Printer, rear 43 Centre st., N. Y.

Entered according to Act of Congress, A.D. 1856, by FIRTH, POND & Co., in the Clerk's office of the U. S. District Court for the Southern District of New York.

LIBRARY OF THE  
UNIVERSITY OF WISCONSIN

# GENTLE ANNIE:

3

Written and composed by S. C. FOSTER.

*Andante mosso.*

Piano introduction in G major, 3/4 time, marked *Andante mosso*. The piece begins with a treble clef and a key signature of one sharp (F#). The melody starts on G4 and moves stepwise up to D5, then descends. A triplet of eighth notes appears in the final measure of the introduction.

First line of the song. The vocal line begins with a whole rest, followed by the lyrics: "Thou wilt come no more, gen - tle An - nie, Like a". The piano accompaniment consists of a simple harmonic accompaniment in the right hand and a bass line in the left hand.

Second line of the song. The vocal line continues with the lyrics: "flow'r thy spi - rit did de - part; Thou art gone, a - las! like the". The piano accompaniment continues with the same harmonic accompaniment.

Third line of the song. The vocal line concludes with the lyrics: "ma - ny That have bloomed in the sum - mer of my heart." The piano accompaniment concludes with a final cadence.

CHORUS.

Shall we ne - ver more be - hold thee; ne - ver hear thy winning voice a -

- gain, When the Spring time comes, gen - tle An - nie, When the

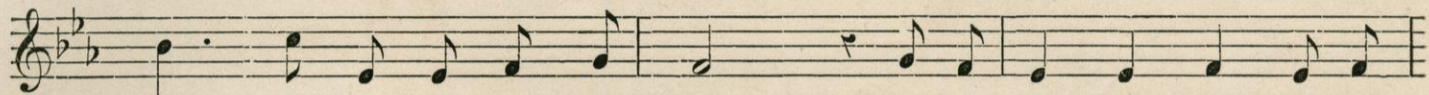
wild flowers are scat - tered o'er the plain?

3

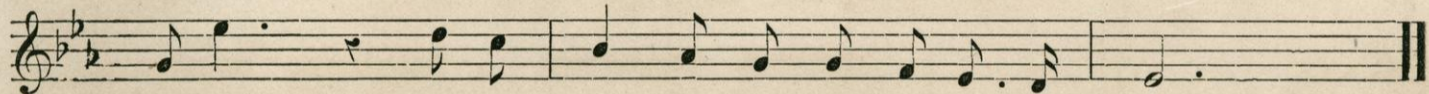
SECOND VERSE.



We have roamed and loved 'mid the bow - ers, When thy

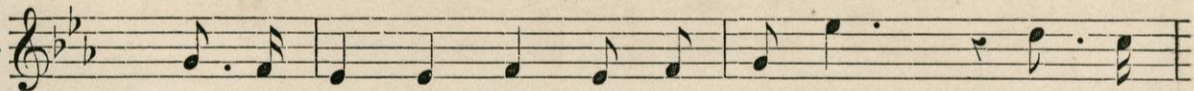


dow - - ny cheeks were in their bloom; Now I stand a - lone 'mid the

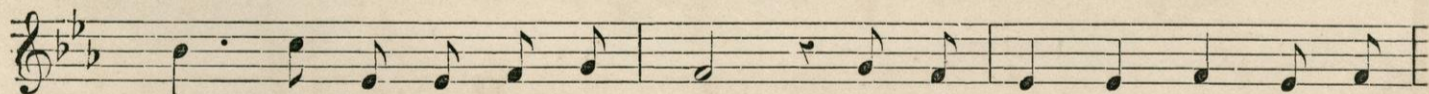


flow - ers, While they min - gle their per-fumes o'er thy tomb. *Chorus.*

THIRD VERSE.



Ah! the hours grow sad while I pon - der, Near the



si - - lent spot where thou art laid, And my heart bows down when I



wan - der By the streams and the mea dows where we strayed. *Chorus.*