



LIBRARIES

UNIVERSITY OF WISCONSIN-MADISON

Wisconsin Dairymen's Association year book 1936. 1936

Wisconsin Dairymen's Association

Wisconsin: The Association, 1936

<https://digital.library.wisc.edu/1711.dl/YT2UROS NKW5LD8N>

This material may be protected by copyright law (e.g., Title 17, US Code).

For information on re-use, see

<http://digital.library.wisc.edu/1711.dl/Copyright>

The libraries provide public access to a wide range of material, including online exhibits, digitized collections, archival finding aids, our catalog, online articles, and a growing range of materials in many media.

When possible, we provide rights information in catalog records, finding aids, and other metadata that accompanies collections or items. However, it is always the user's obligation to evaluate copyright and rights issues in light of their own use.

7
5
+

WISCONSIN DAIRYMEN'S ASSOCIATION • YEAR BOOK 1936

Please cut for display

**A
Wisconsin
Who's Who
in
TESTING
ASSOCIATIONS**

LESLIE
COLLEGE OF AGRICULTURE
UNIVERSITY OF WISCONSIN
JANESVILLE
LIBRARY

Attend

ANNUAL MEETING
AND CONGRESS

FOR
FUTURE FARMER
And 4-H DAIRY CLUB
MEMBERS

JANESVILLE
MARCH - 26 - 27



Janesville Welcomes

The WISCONSIN DAIRYMEN'S ASSOCIATION

(Incorporated in Janesville, 1917)

Some interesting facts about your convention city:

—the center of a rich dairying section . . .
known for its production of high bred herds
. . . an important milk shipping point . . .
a city of unusual park recreational facilities . . . has a \$300,000 Y. M. C. A. building . . . fine Armory building . . . fine public school system . . . large library . . . churches of all denominations . . . banks of unusual strength . . . a center of retail shopping . . . has 57 manufacturing industries . . . makes 85 different articles . . . pays out \$6,000,000 in wages annually . . . manufactured products worth \$75,000,000 . . . has been under city manager form of government for 16 years . . . has 45 miles of paved streets . . . has just completed a modern sewage disposal plant . . . home of State School for the Blind . . . has one of the finest equipped radio stations in the country . . . illiteracy is less than one-half of one per cent . . . the second largest producer of railroad revenue in the state.

Civic and Industrial Council

312 Jackman Block

Janesville, Wis.

Dairy Farmers!
Insure Yourself
Against RUST
buy
ZINC LINED
METAL SPRAYED
DAIRY TANKS



*Chlorine Solution does not
injure the Zinc Lining*

The combination tank is 58" long, 33½" high and 20" wide, with no stove bolts or soldered joints. Solid legs built of 1½ x 1½ x 3/16" angle iron. Its size is adequate for washing utensils, including ten-gallon milk cans.

Vacuum space is provided between the tanks allowing the water to be heated without affecting the temperature of the chlorine solution in the adjoining tank. The drain pipe consists of galvanized nipples, ground joint unions and brass cocks. The metal sprayed zinc lining is absolutely resistant to chlorine and prevents rusting. Will heat 10 gallons of water to a temperature of 110° in twenty minutes.

*Metal Sprayed Tanks offer every dairyman
fine equipment at low cost—write for circular*

**SCHLUETER
BOILER WORKS**

JANESVILLE, WISCONSIN

A PROCLAMATION

Wisconsin Dairy Day -- March 26

Declared by the Governor

WHEREAS, the State of Wisconsin is universally recognized as the leading dairying state in our nation, and

WHEREAS, the Wisconsin Dairymen's Association has occupied a position of leadership in numerous activities for the improvement of the dairying industry and the benefits of Wisconsin dairy farmers, and

WHEREAS, the Wisconsin Dairymen's Association is holding its annual convention in Janesville on March 26th and March 27th, and

WHEREAS, it is to the interest of the Wisconsin dairy industry and the state at large to recognize appropriately and call to the attention of the nation the superior quality of Wisconsin dairy products and the accomplishments of our Wisconsin dairy farmers,

NOW, THEREFORE, I, Philip F. La Follette, Governor of the State of Wisconsin, do hereby designate and proclaim March 26, 1936, as WISCONSIN DAIRY DAY, and urge that the occasion be observed with fitting exercises in recognition of Wisconsin dairy farmers and the superior dairy products they produce.

IN TESTIMONY WHEREOF, I have hereunto set my hand and caused the Great Seal of the State of Wisconsin to be affixed. Done at the Capitol in the City of Madison, this sixth day of March, in the year of Our Lord, one thousand nine hundred and thirty-six.

(Signed) PHILIP F. LA FOLLETTE,
Governor.



THE NEW
FIREPROOF
**MONTEREY
HOTEL**

COR. WEST MILWAUKEE & SO. HIGH STREETS

JANESVILLE, WIS.

RATES - ONE PERSON

\$2.25 - \$2.50 PER DAY WITH
SHOWER BATH

\$2.50 - \$3.00 - \$3.50

PER DAY WITH COMBINATION TUB AND SHOWER

\$1.00 ADDITIONAL PER PERSON IN DOUBLE BED

TWIN BEDS WITH BATH \$4.00 TO \$5.00

MODERATE PRICED **COFFEE SHOP** IN CONNECTION

VISIT OUR NEW **CANTINA COCKTAIL
LOUNGE** ON LOWER FLOOR LEVEL OF THE
HOTEL. **FINEST IN SOUTHERN WISCONSIN.**

MONTEREY HOTEL COMPANY

HARRY B. DOTEN, MANAGER

PROGRAM

64th Annual Dairymen's Association Convention and Future Farmers and 4-H Dairy Club Congress

All Sessions in the Armory

Thursday, March 26

MORNING SESSION

Herbert Chapman, Blair, Presiding

- 9:30—*"Fun for Everyone!"* Pepmaster Jack Frost,
Junior Editor of Hoard's Dairyman
- 9:45—*"My High School Record Work"*
Gerhard Boss, Oshkosh, Future Farmer
- 10:00—*"4-H Dairy Club Work Helped Me Build a
Dairy Herd"*
Ben Bibble, Pewaukee, 4-H Club Member
- 10:15—*"The 1000-Day Projects for 4-H Dairy
Club Member"* Verne V. Varney,
State 4-H Club Department, Madison
- 10:45—*"Future Farmer D. H. I. A."* L. M. Sasman,
Director Vocational Agriculture, Madison
- 11:15—*"Flying Fingers"*
Jackie Brown, Accordionist
- 11:25—*"W. D. A. and the Junior Dairymen"*
A. C. Thomson

NOON—Breed and Sectional Luncheons

AFTERNOON SESSION

Lester Stevens, Oconomowoc, Presiding

- 1:00—*"Melody Moments"*
Lima Center 4-H Club Orchestra
- 1:20—*"Welcome to Janesville"*
Henry Traxler, City Manager
- 1:30—*"The Dairy Farming Business of the Future"*
O. E. Reed, Chief of the Bureau of
Dairy Industry, Washington, D. C.
Discussion
- 2:30—*Audrey Medaris Dancers*
- 2:40—*"Making More Milk on Pasture"*
Prof. Wilber J. Fraser, University of Illinois
Discussion led by Bennett S. Bird,
Fond du Lac, and others

(Continued on page 7)

Convention Visitors !

We invite you to make

The Meyers Hotel

(In the Heart of Janesville)

Your Headquarters

If you follow the crowd you will
be DINING at

Mc DONALD'S CAFE

The best food in the land at moderate prices

Mc Donald Hotel Co.

Janesville, Wis.

ANDERSON'S LUNCH

"We Serve the Best of Foods at Popular Prices"

16 N. Main St.

Phone 1726

Janesville, Wis.

Compliments of

CENTRAL RESTAURANT

121 W. Milwaukee

: : :

Janesville, Wis.

11 South Bluff St.

Telephone 754

MARSHALL-PORTER COMPANY

Printing-Engraving-Offset Lithography

JANESVILLE

: : :

WISCONSIN

PROGRAM

(Continued from page 5)

7:00—*Dairy Feast*

Toastmaster
Speaker

Dr. James S. Healy
James G. Hays,

Michigan State College

*"The Challenge of the Dairy Farm Home
Today"*

Mrs. Blanche Hedrick,
University of Wisconsin, Madison
Entertainment and fun for all

SPECIAL -- Dairy Cattle Breeding School

Conducted by Gordon E. Dickerson, Genetics Dept., University of Wisconsin, 8:30 to 9:30 a. m., 4:30 to 5:30 p. m.—Hotel Monterey. Admission by ticket only. Free.

Friday, March 27

MORNING SESSION

Hugh Hemmingway, Janesville, Presiding

9:15—*Hill Billy Band*

9:30—*"Cooperative Milk Marketing"*

L. A. Markham,
Director of the Pure Milk Association,
Janesville, Wisconsin

10:00—*"Successful Merchandising by the
Farmer Himself"*

Gavin McKerrow,
Gen'l Mgr. of the Golden Guernsey
Dairy Cooperative, Milwaukee, Wis.

10:30—*Milton College Quartette*

10:45—*"New Facts on Getting the Most Out of
Roughage"*

Prof. E. B. Hart,
Head of the Agricultural Chemistry Dept.,
University of Wisconsin, Madison
Discussion of feeding problems

AFTERNOON SESSION

Glen Vergeront, Madison, Presiding

1:15—*Entertainers Extraordinary*

Carl Mavis and Tony Zabel, Radio Artists

1:25—*"Uniting Under County Dairymen's
Associations"*

Fred Burhop
Port Washington, Wisconsin
Annual meeting, Business session, Election
of officers of the Wisconsin Dairymen's
Association

May we call your attention to the advertisers in this booklet? They were invited to tell their story to you that this publication might be a better reference and of more value to you throughout the year.

We are after Your Business with Rock Bottom Prices ~

Profiting by an experience of fifty-four years as a Janesville factory, we now have our own farmer factory store fully stocked with practically everything needed on the farm. All middle men have been cut out. We sell farmers direct and when we say "we save you money", we expect you to make us prove it.

New low direct-to-the-farmer factory prices on all kinds of fencing, steel posts, barb wire, paints, roofing, harness, barn equipment, and many other lines used on the farm.

If you are in Janesville be sure to visit our new factory store, or write us for our new 1936 mail order catalog.

**JANESVILLE FENCE
& POST CO.**

Janesville, Wisconsin

Convention Committees, 1936

Committees named to prepare and carry through to conclusion a successful convention and annual meeting include:

Advisory Committee—Glen Vergeront, chairman, Madison; Fred Burhop, Port Washington; Glen Lycan, Sheboygan; Edwin Peterson, Curtiss.

Arrangements—Dr. W. A. Munn, chairman, Janesville; H. C. Hemmingway, Janesville; L. A. Markham, Janesville.

Contest and Prizes — John Wiseman, chairman, Janesville; Geo. M. Clark, Janesville; R. T. Glassco, Janesville.

Publicity—Clarence Hulbert, chairman, Waukesha; Tom Murphy, Janesville; I. O. Hembre, Barron; Willis Freitag, Lake Mills; Glen Lycan, Sheboygan; Wakelin McNeel, Madison; R. A. Powers, Viroqua; Ben Walker, Lancaster; Erwin Sutton, Augusta.

Banquet — Walter Katterhenry, chairman, Beloit; Chas. L. Hill, Madison; A. J. Cramer, Madison.

Program—P. C. Burchard, chairman, Fort Atkinson; A. C. Thomson, Fort Atkinson; Roy T. Harris, Madison.

County Agent—S. P. Murat, chairman, Fond du Lac; Randall Swanson, Appleton; Manly Sharp, Juneau.

Cow Testers—Ben Rehrauer, chairman, Milwaukee; Milo Hill, Kenosha; Ormal Kiesling, Jefferson.

Future Farmer—N. O. Eckley, chairman, Fort Atkinson; Al Zurbuck, Lake Geneva; L. R. Larson, Beaver Dam.

4-H Club—Verne Varney, chairman, Madison; J. E. Stallard, Juneau; Ray Pavlak, Monroe.

Wives and Daughters—Mrs. Ray Pavlak, chairman, Monroe; Mrs. John Pester, Whitewater; Mrs. Frank Fisher, Janesville.

Entertainment — Russell Frost, chairman, Fort Atkinson; Margaret Heckie, Janesville.

Jersey Breeders — Stewart Barlass, chairman, Janesville; Richard Brackett, Elk Mound; P. N. Stephanus, Delavan.

Holstein Breeders — Alex McKeown, chairman, Janesville; D. K. Allen, Oshkosh; Chet. Ouweneel, Fort Atkinson.

Guernsey Breeders — L. B. Stevens, chairman, Oconomowoc; Geo. M. Newlin, Fond du Lac; H. W. Griswold, West Salem.

Brown Swiss Breeders — Ira Inman, chairman, Beloit; J. P. Allyn, Delavan; Jake Voegeli, Monticello.

Exhibits — W. G. Carlson, chairman, Madison; Joseph Beck, Madison; Harry Kleuter, Madison.

THE FARMER'S MUTUAL

Has the lowest rates of all "A"
(excellent) rated companies in
Wisconsin



FARMERS' MUTUAL
AUTOMOBILE
INSURANCE COMPANY

312 Wisconsin Ave.

:::

Madison, Wis.

THE STATE FARM MUTUAL

Wisconsin's Fastest
Growing Tornado
Insurance Company



STATE FARM MUTUAL
INSURANCE COMPANY

(Windstorm Insurance at Cost)

312 Wisconsin Ave.

:::

Madison, Wis.

Secretary's Report

FEB. 1, 1935 to FEB. 1, 1936

Nine of the past 12 months covered by this report, the Dairymen's Association was without legislative appropriation. Salaried employees could not be continued and all the field work, meetings, and other activity of the association had to be carried on by your secretary.

It may be interesting to record that during these months your secretary made 43 farm visits and drove 9,933 miles to speak to 6,789 Wisconsin farmers at 68 meetings. A total for the year includes 53 farm visits, 87 meetings, 8,783 in attendance, and 12,847 miles driven. To this may be added speaking on behalf of the association at nine radio broadcasts.

November 1, 1935, fieldman, Erwin Sutton, for 17 years an employee went on the association pay roll after our successful fight to again be included in the legislative appropriation budget. His work has been almost entirely given over to getting in the College farm accounts books. Since November 1 he has traveled 4,457 miles, attended 61 meetings, attendance 1340 and made 226 farm visits.

November 26, 1935, fieldman, A. C. Thomson, a former county agent in Kansas started work for the association. His report from that date records 2,809 miles driven, attending 22 planning conferences and 21 meetings of 1,589 Wisconsin farmers and making 48 farm visits. Two herds have been summarized and analyzed. Two others are in progress. Eight one-day Farmer production shows are already planned. A 1,000 production contest for 4-H and Future Farm members is set up.

Projects Completed

In briefly recounting the more important aspects of programs in which the Dairymen's Association has participated the past year we would mention first the successful completion of the W. E. R. A. testing project in the original drouth area designated as St. Croix, Pierce, Polk, Dunn, and Barron Counties. This testing program came into this section at a time 11 associations were putting up a terrible fight for existence. Today there are 23 associations operating in that section with prospects of 4 or 5 more, as soon as county agent and specialist attention can be given. We would record the conclusion of Erwin Sutton, fieldman in charge of this project.

1. "The increase of testing work more than 100% shows that demonstrating a complete, thorough record keeping program sells the work because little attention other than that given by cow testers was given to reorganization."
2. "That federal subsidy increasing the testers' pay would make possible a more complete, more effective, and broader testing program has been demonstrated."

3. "Breeding and Farm account work can be carried on by testers who apply themselves to the work."
4. "Bimonthly testing appeals to comparatively few dairy herd owners."
5. "About 60% of the dairy herd owners are interested in farm account work after a year's trial."
6. "Ear tagging identification and barn breeding records meet with almost universal approval of farmer members."

Probably next in importance to the W. E. R. A. testing was the making of cow testing and better breeding exhibits. Exhibits were made at two county fairs, Field Day at Madison, Wisconsin State Fair, and the National Dairy Show at St. Louis. The Dairymen's Association distributed 15,000 printed folders at the two last named shows, drawing attention to Wisconsin's dairy farmers.

Radio Broadcasts

Two radio programs were sponsored by your Association. One was the third annual Wisconsin Dairymen's New Year's radio party. The other was America's first Bull Trial by Radio held May 2, 1935. Stories of this trial were carried in papers with combined circulation well over 350,000. Requests from 37 states, two foreign countries and Canada for copies of the trial script measures the effectiveness of this activity.

Tested Sire Certificates, mailed out to Wisconsin herd owners as soon as five daughter-dam comparisons came in to the Farm and Dairy Records office has become another activity of the Dairymen's Association. A total of 23 Guernseys, 54 Holstein, and one Jersey certificates have been sent out to date.

Clerical and stenographic help have been given the Farm and Dairy records office by the association to build and type farmer pedigrees of herd sires at the head of cow testing association herds, and to get out the second edition of the Wisconsin Bull Book. The first publication of this book, becoming of more and more importance to Wisconsin dairy farmers, was published by your association. This year the College took over the major part of the cost of publication at a time when our income was limited to membership dues.

Your association is now building a grade cow "Herd Book" from ear tag identification reported by testers. This particular activity will increase the number of sires proved without adding further testing members approximately three times.

Your association has purchased herd book covers, bull book covers, ear tag equipment and other supplies necessary for carrying out the breeding program of the Farm and Dairy Records office.

November, 1935, marked the publication of a monthly official organ of your association, the "Herd Builder". This goes to all paid up members of your association.

Your secretary during the past year completed 12 months in full and complete charge of the Farm and Dairy Records office. During that period cow testing membership in Wisconsin increased 57% and Wisconsin again took the lead of all states in this field. During this period a geneticist, Gordon E. Dickerson, was brought into the office and Wisconsin farmers were given a full and complete breeding record set up, with Permanent Herd Book, bull sales list, ear tag identification using the regulation tag furnished by the State Department of Agriculture and Markets, etc., etc. During this time Wisconsin farmers were given a new and practical farm record book.

Special Awards

Your association this year makes special award to the following testers for their daughter-dam comparisons completed:—

1. Ben Rehrauer, Milwaukee Association
2. Obert Morehouse, Waukesha Association
3. P. T. Weinsheim, Kiel Association
4. Clarence Chatt, Barron No. 3 Association
5. Albert Koplín, Byron Association
6. Eugene Larson, Stoughton Association
7. Harold Evenson, Dunn No. 1 Association
8. Herman Delleman, Winnebago No. 2 Association
9. Carl Gall, Verona Association
10. Herman Severson, Barron No. 1 Association

Arthur Moen, tester in the Dunn Co. Association, is presented with a Gopatis medal for his farm record work.

Gordon E. Dickerson, Farm and Dairy Records office, is presented with a Gopatis medal in appreciation of his contribution to Wisconsin dairying, building the breeding record system now available.

Awards for meritorious service to cow testing will be made to:

Glen W. Vergeront, Madison. Many years actively engaged in county agent work. An ardent and effective worker in organizing and supervising cow testing associations. President of the Dairymen's Association. In charge of the office of Farm and Dairy Records.

H. C. Searles, Fond du Lac. First employee of Dairymen's Association in organization of cow testing associations. Effectively told and sold the cow testing story for more than 20 years.

Henry Anthes, Fort Atkinson. A member and ardent supporter of testing work of long standing.

H. R. Halverson, Holmen. His herd has been in testing work 26 continuous years.

John Clausen, Pleasant Prairie, helped to form first C. T. A. in Kenosha Co. and still an active member.

Appreciation for the legislative appropriation of \$6,000 per annum for 1935-36 should be herein recorded to the following legislators: Assemblyman Palmer F. Daus, Senator Harry Griswold, Assem-

blyman Hugh A. Harper, Assemblyman Chas. A. Beggs, Assemblyman Ira Inman, Senator Wm. D. Carroll, Senator E. F. Brunnette, Assemblyman Arthur D. Kelly and others.

Appreciation for collection of annual dues from cow testing association members by A. J. Cramer, Farm and Dairy Records, should be made a record of this report.

REPORT OF TREASURER
WISCONSIN DAIRYMEN'S ASSOCIATION

July 1, '34 to June 30, '35

Received

Balance on hand, July 1, 1934	\$2874.49
Receipts—Membership fees and bull books ..	862.00
Supplies	133.42
Total	\$3869.91

Disbursements

Publication "Wisconsin Bull Book", 2500 copies	\$644.29
Printing and Supplies	505.19
Secy. expense for Travel and Telephone	77.45
Erwin Sutton, June '34 expense as CTA Supervisor	71.49
Stenographic Service	27.50
Prize awards for CTA achievement	63.80
Banquet	32.90
Directors expense	13.15
Balance on hand July 1, 1935	\$2434.14

Write



Before

**BUILDING - REMODELING
EQUIPPING - VENTILATING**

**DAIRY or HORSE BARN
HOG or POULTRY HOUSE**

James Mfg. Co.

Fort Atkinson - Wisconsin

**Who's Who
Alphabetical
List**

of

**Wisconsin Dairymen's
Association**

Active Member Breeders

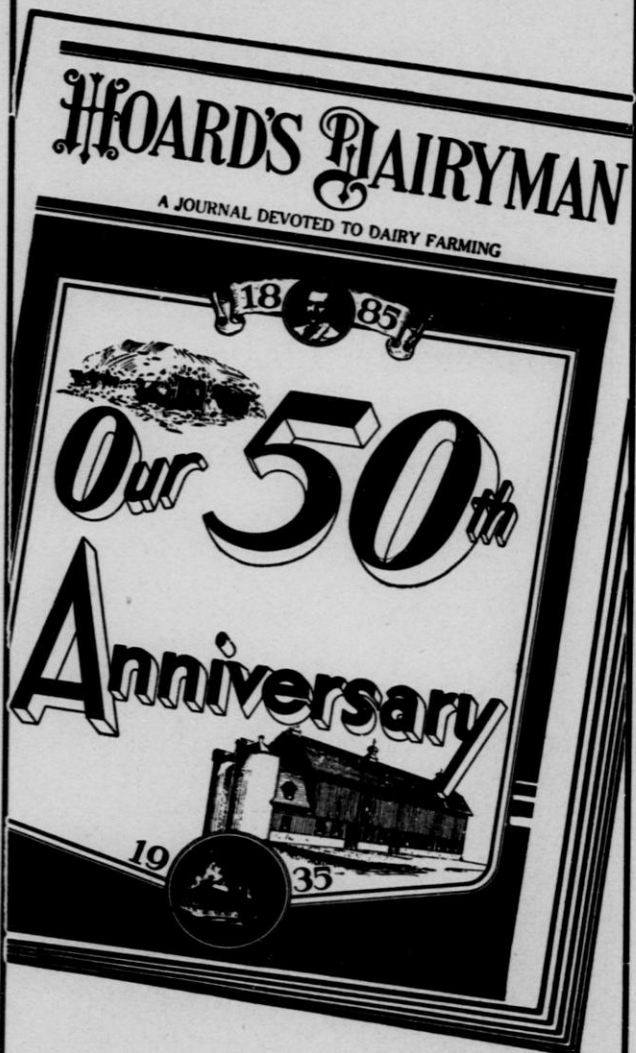


Most of these dairymen are testing their herds continuously year in and year out . . . They are proving the worth of each cow as an economical producer of butterfat . . . But more, they are proving the breeding worth of sires and dams.



Advertisers were invited to tell their story, that this booklet might be made more valuable to you.

All angles of good dairy
farming are found in every
issue of



The only farm paper devoted
exclusively to dairy farm
problems.

Fort Atkinson

Wisconsin

Ayrshires



The following Ayrshire breeders are members of the Wisconsin Dairymen's Association. The number signifies the number of cows in milk.

Armstrong, J. W., Neenah	Grade	25
Brown, Louis, Richland Center	Registered	21
Cross, A. J., Oshkosh	Grade	28
Ihde, Herman, Neenah	Registered	20
Krenke, Henry, Freemont	Grade	8
Nisbet and Sons, Wm., Richland Center	Registered	18
Schroeder, Fred, Grafton	Grade	26
Vallesky, E. H., Collins, Box 94	Grade	19
Vallesky, G. W., Collins	Grade	16

Federal Accredited

7 Years D. H. I. A.

FERNBROOK AYRSHIRES

Wm. Nisbet and Sons

Richland Center, Wis.

the AYRSHIRE is the Breed that tests

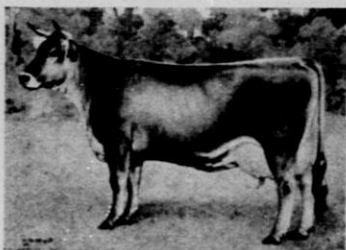
According to a recent census, about forty per cent of the Ayrshire cows of milking age in the United States are enrolled in dairy herd improvement associations, Herd Test, or Advanced Registry test.

Ayrshires are heaviest producers of four per cent milk at least feed cost.

For literature regarding Ayrshires or lists of breeders with stock for sale, write



AYRSHIRE BREEDERS' ASSN.
BRANDON, VERMONT



Brown Swiss

The following Brown Swiss breeders are members of the Wisconsin Dairymen's Association. Number signifies cows in milk in his herd.

Allyn, J. P. Delavan	-----Registered	30
Bentz, Otto, Cedarburg	-----Reg. & Gr.	28
Bergeman, Harry, Elmwood, R. 2	-----Grade	17
Bork, Robt., Fremont	-----Grade	14
Brandt, Ben, Lime Ridge	-----Grade	9
Casper, Albert, Fond du Lac, R. 4	-----Grade	19
Evans, Willard R., Waukesha	-----Reg. & Gr.	28
Ferg, A. R., Manawa	-----Registered	10
Freeman and Elliot, Beloit, R. 6	-----Registered	19
Gasteyer Bros., Elmwood, R. 2	-----Grade	18
Hoyman, M. G., Neenah, R. 2	-----Reg. & Gr.	13
Hubli, Frank, Oshkosh, R. 5	-----Grade	32
Ingold, John, Monroe	-----Registered	32
Inman, Ira, Beloit, R. 6	-----Registered	20
Kaderabek, John, Nashotah	-----Reg. & Gr.	23
Kivilin Bros., Brooklyn, R. 2	-----Reg. & Gr.	51
McLaughlin, Russel, Oshkosh	-----Registered	14
Monette Bros., Elmwood, R. 2	-----Grade	22
Nelson and Sons, B. A., Brooklyn, R. 3	-----Registered	25
Noegli, John, Lodi	-----Reg. & Gr.	35
Peppers and Son, T. E., Monroe	-----Registered	24
Radke, Ben W., Hartford	-----Grade	13
Reinert, Elmer, Larsen	-----Grade	16
St. Francis Monestary, Burlington	-----Grade	12
Schmeiser, Herbert, Valders	-----Registered	13
Schmidt and Sons, Emil, Manitowoc, R. 2	-----Registered	29
Schmid, Mrs. Edna, Monroe	-----Registered	25
Van Der Oke and Dargel, Reedsburg	-----Registered	15
Wallace, Fred, Beloit, R. 7	-----Grade	18
Wisconsin State Prison, Markesan	-----Registered	48
Witt, Louis, West Allis, R. 4	-----Reg. & Gr.	21
Yahnke, Otto and John, Burlington, R. 4	-----Grade	16

HEADQUARTERS FOR EQUIPMENT and SUPPLIES

For Dairy Herd Improvement Associations

The complete Testing Equipment with 24 Bottle Aluminum Hand Babcock Tester at \$48.50. We are making a special cash price to the Associations on our New Improved 24 Bottle Aluminum Babcock Hand Tester at \$25.00. This machine has gears running in grease, weighs less than 40 lbs., and is very convenient to carry on the job. Machinery and Supplies for the Dairy, Cheese Factory and Creamery.

Wisconsin Dairy Supply Co.

WHITEWATER

: : :

WISCONSIN



Guernseys

The following Guernsey breeders are members of the Wisconsin Dairy-
men's Association. The number signifies the cows in milk in his herd.

Anderson, Dan A., Holcombe	Grade	15
Attridge, A. R., Baraboo	Reg. & Gr.	16
Baleen, John, Oconomowoc	Registered	20
Babb and Sons, John H., Richland Center.....	Registered	23
Balson, Chas., Fond du Lac, R. 1	Reg. & Gr.	21

4 Years D. H. I. A.

Average 321 Lbs. Butterfat

GUERVILLE FARM GUERNSEYS

Chas. E. Balson

: : :

Fond du Lac, Wis.

Barta, Calvin, Two Rivers, R. 1	Grade	16
Bartell, Ervin, Cedarburg	Grade	21
Bartell, Rheinar, Thiensville	Registered	17
Basse, Wm. H., R. 5, West Allis	Registered	17
Baysinger, Fred, Salem	Grade	12
Beale and McConnel, Madison, R. 4	Registered	21
Bebee, M. W., Oshkosh	Registered	15
Becher, Conrad J., Hortonville, R. 1	Grade	20
Becker, George, Stoughton, R. 1	Registered	8
Becker, Walter, Fort Atkinson	Registered	11
Becker, Wilbur, Fort Atkinson	Registered	12
Behrens, Bernhard, Grafton	Reg. & Gr.	15
Benning, H., Oakfield	Registered	18
Berge, Andrew, Manitowoc	Grade	15
Berge, Anton, Valdars	Registered	16
Bergel, Adolph, Manitowoc, R. 6.	Grade	12
Bergeman, Harry, Elmwood, R. 2	Grade	17
Blondy and Blondy, New London	Registered	30
Boettcher, Otto, Waukesha, R. 1	Grade	23
Breitrick, O. H., Appleton, R. 2	Registered	15
Brennan, Joseph, Cato	Registered	14
Brunner, Joseph, Manitowoc	Registered	18
Brussewitz, Levern A., Black Creek, R. 1	R. & Gr.	16
Burchard & Peters, Fort Atkinson	Reg. & Gr.	17
Burhop, Fred, Port Washington	Reg. & Gr.	12
Capener, Mrs. Myrtle, Baraboo	Registered	15
Casper, Gregor, New Holstein, R. 2	Grade	13
Casper, Hubert, New Holstein, R. 2	Grade	14
Casper, John, New Holstein, R. 2	Grade	14
Casper, Joseph N., Chilton, R. 5	Grade	21
Casper, Math, New Holstein, R. 2	Grade	20
Chapple, J. J., Eden	Grade	14

Negative T. B. and Bangs

12 Years D. H. I. A.

FAWNBAY GUERNSEYS

Wilbur Becker

: : :

Fort Atkinson, Wis.

Guernseys March On

- No klieg lights shine on the purebred Guernsey cows in more than 20,000 stables yet their accomplishments are well known. Efficiently they transform roughage and grain into a stream of rich yellow milk which brings profits to their owners.
- Guernsey cattle lead all other animals in value, Guernsey breeders testing their cattle for production data lead all dairy cattle breeds in number.
- Guernsey milk producers lead in identifying their product with the breed name. Golden Guernsey is sold in 400 markets with some distributors selling as much as 7,000 quarts per day. There is an extra profit.
- The drought was a lesson to dairymen of the economy of this breed in producing butterfat. Breeders located in butter producing sections find a ready demand for Guernsey cattle to supply market milk areas.

*Send for a free copy of the
Guernsey Breeders' Journal*

**The AMERICAN GUERNSEY
CATTLE CLUB**

279 Grove Street

Peterborough, N. H.

Federal Supervision : : : T. E. and Bangs

BETTER FARM GUERNSEYS

For Sale—Son of Proved Sire, Beauty's Whiteface of the Rancho — Now Owned by U. of W.

Fred Burhop : : : Grafton, Wis.

Griswold, Harry W., West Salem	-----Registered	30
Gruber, Erwin, Manitowoc, R. 6	-----Grade	17
Christensen and Madsen, Oregon, R. 2	-----Grade	38
Clark, Geo. M., Janesville	-----Grade	16
Clausen, Edw., Omro	-----Grade	11
Clausen, Herman, Bruce	-----Grade	21
Clausing, Est., Jul., Grafton	-----Registered	27
Coburn, O., Whitewater	-----Reg. & Gr.	28
Coburn and Rasey, Beloit, R. 4	-----Grade	47
Coleman, Wallace, Bruce	-----Grade	11
Connell, C. J., Germantown	-----Grade	23
Conrad, Walter H., Elkhart Lake, R. 2	-----Grade	14
Cook, Henry, Burlington, R. 4	-----Grade	11
Cowan, L. W., Oshkosh	-----Registered	54
Craig, O. P., Mukwonago	-----Registered	25
Crandall, Rowley, Ladysmith	-----Grade	9
Cruver, Chas., Eagle, R. 2	-----Grade	10
Dank, Frank, Elroy	-----Grade	24
Davidson, Bros., Waukesha	-----Reg. & Gr.	20
Dietz, Geo., Appleton, R. 2	-----Reg. & Gr.	14
Dougan, W. J., Beloit, R. 7	-----Reg. & Gr.	39
Drahiem, Henry, Chilton, R. 4	-----Grade	19
Drahiem, Richard, Chilton	-----Grade	14
Drierer Bros., Mishicot, R. 1	-----Grade	24
Duckett Bros., Burlington, R. 1	-----Reg. & Gr.	29
Elzinga, Henry, Ladysmith	-----Grade	15
Erdmann, L. C., Jefferson	-----Reg. & Gr.	16
Evans, Thos. H., Wales	-----Grade	19
Ewers, Glen, Richland Center	-----Grade	12
Fahrwald Farm, Oshkosh	-----Registered	29
Feaster, John, Richland Center	-----Grade	13
Felton, S. and L., Richland Center	-----Grade	20
Ferris, Howard, Colgate	-----Grade	14
Fischer, Leonard J., Brillion, R. 2	-----Grade	13
Fox, Mrs. Alice M., Cornell	-----Grade	24
Fox, F. E. & Son, Waukesha	-----Registered	45
Francois, Elmer, Waukesha	-----Reg. & Gr.	45
Frederick, John, Appleton, R. 1	-----Registered	12
Freund, Fred A., New Holstein, R. 2	-----Grade	17
Fuhrman, Henry, New Holstein, R. 2	-----Grade	16
Gasteyer Bros., Elmwood, R. 2	-----Grade	18
Gasteyer, E. J., Elmwood, R. 2	-----Grade	13
Geissler, George, Johnson Creek	-----Grade	13
Geissler, Harry, Watertown	-----Grade	14
Gillingham, Charles, Richland Center	-----Grade	16
Gillingham, Floyd, Richland Center	-----Grade	11
Gittem, Ed., Franksville	-----Reg. & Gr.	17
Graf, Waldo, Kiel, R. 2	-----Grade	12
Grall, John, Hortonville, R. 1.	-----Grade	25
Greenwald, Mrs. J. Oscar, West Allis, R. 4, Box 446,	Reg.	20
Griffin, J. M., Janesville, R. 7	-----Grade	20

For GOOD GUERNSEYS come to LA CROSSE County

where they have the largest percentage of Guernsey cattle of any county in the state. Purebred and grade sale May 6 and November 18. Write the

LA CROSSE CO. GUERNSEY BREEDERS, INC.

West Salem, Wisconsin

Vilas E. Young, Sec'y.

Grunwaldt, Aug. and Son, Black Creek, R. 3	Reg. & Gr.	18
Guetschow, Edward, Mishicot, R. 1	Grade	11
Guelig, Mrs. Theresa, Chilton	Grade	25
Gulikson Bros., Manitowoc	Grade	16
Hadden, A., Ladysmith	Registered	16
Halderson and Son, J. M., Beloit, R. 7	Grade	16
Halvorson, Lorentz, Oregon, R. 2	Grade	7
Hammer, Engelbert, New Holstein, R. 2	Grade	18
Hansen, W. C., New Holstein, R. 2	Registered	18
Harris, Roy, Richland Center	Grade	20
Harvey Est., J. M., Waukesha, R. 2	Registered	30
Helgison, Arthur, Valders	Grade	15
Hendricks, Ray A., Campbellsport	Grade	15
Henning, George, Burlington	Grade	18
Heyn and Sons, A. H., Oshkosh, R. 3	Reg. & Gr.	11
Hillside View Farm, Waukesha, R. 2	Reg. & Gr.	25
Hilt, Clem, New Holstein, R. 2	Grade	21
Hintz, Adolph, Cedarburg	Grade	16
Hoard's Dairyman Farm, Fort Atkinson	Registered	21

Bloodlines proven by 17 years D. H. L. A.

HOARD'S DAIRYMAN FARM

GUERNSEYS

: : :

Ft. Atkinson, Wis.

Hockmuth, Herbert, La Valle	Registered	12
Holtomt, H. C., Boyceville	Grade	13
Holbach, Vincent, Malone	Grade	15
Honeyager, Fred, Mukwonago, R. 1	Grade	20
Hoppert, Martin, Sheboygan	Registered	20
Horfit, Ed., Mukwonago, R. 2	Grade	9
Horkey, Claude, Hanover	Grade	13
Hovener, Wm., Grafton	Grade	22
Hulburt, C. H., Waukesha	Registered	16
Huss, Albert, Appleton, R. 4	Registered	27
Jacobson, Arene, Richland Center	Grade	23
Jahnke, Wm., Watertown, R. 3	Grade	12
Jamison Bros., Appleton, R. 1	Registered	34
Jennings, J. R., Ladysmith	Grade	24
Jodell, H. W., Knapp	Reg. & Gr.	27
Johnson, Chloran, Yuba	Grade	13
Johnson, Elmer, Stoughton, R. 5	Registered	30
Johnson Farm Co., Brandon	Reg. & Gr.	24
Johnson, Glen, Baraboo	Registered	12
Johnson, L. G., Whitewater	Reg. & Gr.	15
Jones, John E., Waukesha, R. 5	Grade	31
Keller, O. J., Richland Center	Grade	10
Kiesling, Ed., Jefferson	Reg. & Gr.	13
Kipp, Frank, North Prairie	Grade	18
Kipp, Hubert, North Prairie	Grade	29
Kirch, Frank, Elroy	Grade	16
Klitzke, Harry, Whitewater	Grade	17
Koping, H., Elmwood, R. 2	Grade	28
Koppelman, Wm. C., Manitowoc, R. 6	Grade	9
Kornely, Chas., Two Rivers, R. 3	Grade	24
Kramer, Matt, Manitowoc, R. 5	Grade	11
Krause and Tinkham, Ripon	Reg. & Gr.	24
Kreutzberg, Henry, Hortonville, R. 1	Grade	24
Krueger Bros., Cedarburg	Grade	24
Krueger, H. E., Kaukauna	Grade	12
Kunz, Wm., Fort Atkinson	Grade	17
Laird, John L., Shiocton, R. 2	Grade	12
Lamberger, Joseph, Cato	Grade	16
Landul, John, Waupun	Grade	12
Laney, D. M., Dousman	Registered	20
Langenfeld, Paul W., New Holstein	Grade	25
Law and Onsrud, Stoughton, R. 5	Grade	24
Lee, Andrew, Stoughton, R. 3	Grade	18
Leppla, Victor, Appleton, R. 1	Registered	20
Leubke, Chas., Valders	Grade	14
Leuders, Walter, Cedarburg	Grade	13
Lewis and Baribeau, New Auburn	Grade	16
Lichtenwaluer, Arthur, Hartford	Registered	9
Lurvey, H. & H., Dousman	Registered	45
Mackie, E. E. & Son, Picketts	Grade	18
MacManus, Web., Oregon	Grade	13

C. T. A. Testing Since 1924

EAST LYNNE FARM GUERNSEYS

Herd Sire: Holliston's Laddie A. R.

Elton W. Morgan

: : :

Cato, Wis.

Mandt, L. O., Madison, R. 5	Grade	19
Marek, John, Hales Corners	Registered	11
Marx, George, Picketts	Grade	11
Mattes, George, Kiel, R. 1	Registered	21
Maves, Paul C., Greenleaf, R. 1	Grade	14
McCaig and Biggar, Edgerton	Gr. & Reg.	17
McKee, Mrs. C. R., Watertown, R. 1	Reg. & G.	17
McKerrow, Geo. & Sons Co., Pewaukee	Registered	60
Meltz, Emory C., Appleton, R. 1	Registered	16
Merlet, D. D., Beloit, R. 2	Grade	21
Meiselwitz, Wm., Kiel, R. 2	Registered	18
Mertens, Joseph, New Holstein, R. 2	Grade	18
Michaels, Harold, Elkhart Lake, R. 5	Grade	20
Miller, John T., Winneconne	Grade	17
Mitchell, C. J., Waukesha	Registered	22
Mitchell, G. E., Hillsboro	Grade	18
Mitchell, Lyman, Hillsboro	Grade	17
Mode, Albert, Fort Atkinson, R. 4	Reg. & Gr.	11
Moevicke, Milton, Iola	Grade	12
Monette Bros., Elmwood, R. 2	Grade	22
Moon, N. J., Oshkosh	Registered	24
Morgan, Elton, Cato	Registered	33
Muellenbach, John, New Holstein, R. 2	Grade	17
Mueller, Norbert, New Holstein, R. 2	Grade	12
Mueller, Valentine, Kiel, Box 3	Registered	11
Mueller, Wendell, New Holstein, R. 2	Grade	17
Mueller, M. J., West Bend	Grade	13
Munn, Dr. W. A., Janesville	Reg. & Gr.	22
Mutz Bros., Trevor	Registered	26
Nelson, H. E., Boyceville	Grade	17
Nelson, Will, Omro	Grade	23
Nett, Nick, New Holstein, R. 2	Grade	17
Nicholls, Morris, Stoughton	Registered	9
Nimmer, Henry, Kiel, R. 2	Grade	11
Olson, Olive M., Iola	Grade	8
Onsrud, Ben, Stoughton, R. 3	Reg. & Gr.	16
Owen, Dave, Mukwonago, R. 1	Registered	30
Pattec, J. R., Waupun	Registered	9
Pease, L. E., Waukesha	Grade	36
Pennell, Raymond E., Richland Center	Grade	8
Petri, Matt, Two Rivers, R. 2	Reg. & Gr.	20
Plagge and Sons, August, Holcombe	Grade	21
Price, W. Howard, Waukesha, R. 5	Grade	22
Puls, Rinhart, Hortonville, R. 1	Grade	25
Rabe, Geo. and Son, Kiel, R. 1	Grade	17
Radle, Wm., Meridean, R. 1	Grade	6
Reinertson, Alfred, Valders	Registered	54
Reis, Frank, Greenville	Reg. & Gr.	15
Richards, George, Lodi	Grade	18
Ridge, H. & Sons, Whitewater	Reg. & Gr.	35
Riskey, Fred, Richland Center	Grade	14
Riter, Jess, Platteville	Grade	16
Roberts, David, Wales	Grade	50
Roe, O. B., Whitewater	Grade	26
Roe, W. T., Whitewater, R. 3	Reg. & Gr.	17
Roitt, J. M., Kiel, R. 2	Grade	17
Rosenbaum, Arthur, Fond du Lac, R. 3	Grade	28
Ross and Hocking, Reedstown	Registered	20
Rowlander, Wm. O., Waukesha, R. 1	Grade	17
Rummler, Henry, Watertown, R. 4	Reg. & Gr.	19
Rusch, Walter, Fremont	Grade	16

Shetland Ponies

Saddle Horses

VALENTINE GUERNSEYS

Dr. W. A. Munn

: : :

Janesville, Wis.

Type

Production

Size

TILLYBARDIN Guernsey Farms

Established in 1912

Fifty Pure Breds, all bred on the farm, the offspring of three foundation cows:

Amarina of Hillstead No. 29091605 Lbs. Fat
Imp. La Belle Buttercup No. 35707523 Lbs. Fat
May Rose of Tillybardin No. 45727664 Lbs. Fat
Eleven years of C. T. A. work with herd averages from 316.0 lbs. fat, 398.4 lbs. fat. Two years of Advanced Register Testing. Tillybardin Duke's Lola No. 383297, First Prize two-year-old Senior and Grand Champion at Waukesha Dairy Show in 1935, has just finished with 383.1 lbs. fat in GGG.

T. B. Certificate No. 492. Bang Negative herd since 1932.
See Our Herd Before Selecting Your Next Herd Sire

CHAS. J. MITCHELL & SON

WAUKESHA, WIS.

When in Need of a GUERNSEY BULL

BACKED

by Triple Letter Herd
Test Records (Official)
or D. H. I. Associations

WRITE

WAUKESHA COUNTY
GUERNSEY BREEDERS' ASSN.

M. E. Clafrey, Sec'y

Waukesha, Wis.

Russell, Elvin, Apple River, Ill. -----	Grade	20
Russell, Erwin A., Hartford -----	Grade	22
Salverson, Ralph, Manitowoc, R. 5 -----	Grade	8
Samz, Oscar, Two Rivers, R. 2 -----	Grade	20
Sands, Roy, Elmwood, R. 2 -----	Grade	16
Sauberlich, Geo., Appleton, R. 2 -----	Reg. & Gr.	18
Schafer, F. D., Mukwonago, R. 1 -----	Grade	27
Schilberg, Carl, Watertown, R. 3 -----	Grade	20
Schlessner Bros., Johnson Creek -----	Reg. & Gr.	20
Schmidt, Elmer, Greenleaf, R. 1 -----	Registered	22
Schmidt, Harold, Greenleaf, R. 1 -----	Registered	27
Schmit, Theo. A., Greenville -----	Registered	18
Schoenborn, Benedict, New Holstein, R. 2 -----	Grade	15
Schoenborn, John A., New Holstein, R. 2 -----	Grade	18
Schramm, Wm., Mishicot, R. 1 -----	Grade	18
Schrauth, Alphonse, Campbellsport -----	Grade	10
Schuette, G., Ableman -----	Registered	13
Schumacher, A. C., Waukesha -----	Grade	26
Schwartz, Jos., Mukwonago, R. 2 -----	Grade	20
Schwartz, L., Byron -----	Grade	10
Schwemmer, George, Waukesha -----	Grade	16
Schwalbe, Theodore, Chilton, R. 4 -----	Grade	14
Scott, P. S. and Son, Menomonie, R. 1 -----	Reg. & Gr.	17
Scribner, L. B., Rosendale -----	Grade	12
Sears, F. Verlyn, Mazomanie -----	Registered	11
Segebrecht, Roy, Stoughton, R. 5 -----	Registered	14
Seurer, Erwin, Chilton, R. 5 -----	Grade	16
Seymour, S. D., West Allis, Box 445, R. 4 -----	Registered	20
Shaker, Ed., Meridean, R. 1 -----	Grade	11
Sheridan, Clar., Fond du Lac -----	Registered	40
Sinz, Clarence, Elmwood, R. 2 -----	Reg. & Gr.	20
Smithyman, R. P., Pewaukee -----	Reg. & Gr.	25
Sorenson and Halverson, Stoughton, R. 2 -----	Grade	11
Sorenson Bros., Stoughton, R. 3 -----	Reg. & Gr.	13
Spears, John, Shiocton, R. 2, -----	Grade	13
Steen, A. K., Fond du Lac, R. 1 -----	Grade	14
Steiger, Carl E., 108 Elmwood Ave., Oshkosh -----	Registered	30
Steinberg, Len, Hortonville -----	Grade	16
Stevens, L. B., Oconomowoc -----	Registered	40
Stitchman, Henry, New London, R. 2 -----	Grade	35
Stoeber, Ernest, Middleton -----	Grade	23
Strahm, Fred, Ladysmith -----	Registered	7
Stroupe, G. W., Whitewater, R. 1 -----	Registered	15
Tatro and Son, Mrs., Bruce -----	Grade	20
Teidt, Wm. C., Jr., Black Creek -----	Grade	17
Tennie, Oscar, Greenville -----	Grade	18
Thatcher, C. B., Clear Lake -----	Registered	27
Thelen, Nick, New Holstein, R. 2 -----	Grade	12
Thielman, Jacob, New Holstein, R. 2 -----	Grade	12
Thorp, Ozora, Monroe -----	Grade	24
Todd, George, Belmont -----	Grade	23
Torgerson, J. G., Meridean, R. 1 -----	Grade	9
Trewyn, Lawrence, Palmyra, R. 1 -----	Grade	16
Turner, Merton, Downsview -----	Reg. & Gr.	11
Vohs, A. H., Campbellsport -----	Grade	18
Voight, E. T., Reedsville, R. 2 -----	Registered	19
Voland and Prah, Kiel, R. 1 -----	Registered	24
Walden Farm, Oshkosh, R. 4 -----	Registered	46
Warren, James P., Burlington, R. 4 -----	Grade	27
Weber, Joseph P., Sturtevant, R. 1 -----	Reg. & Gr.	25
Weirich, Martin, Baraboo -----	Registered	17

Attention GUERNSEY BREEDERS!

DISPERSAL - May 14, 1936

(The Day Following the Annual Meeting of
The American Guernsey Cattle Club)

F. J. Rueping, Corium Farm Guernseys. Selling
Langwater Slogan and four sons, Corium Slogan's
Oliver, Grand Champion bull, National Dairy Show,
Valor's Fashion, and 90 others. Write for catalog.

Corium Farm

Fond du Lac, Wis.

Geo. Newlin, Supt.

Weis, Mike J. and Son, Campbellsport	Grade	12
Whitby, Edwin P., Malone	Grade	11
Wichern, C. W., Baraboo	Registered	4
Wichern, L. M., Baraboo	Registered	16
Wieneke, Albert, Mt. Horeb	Reg. & Gr.	21
Wiesenthal, Robert, Burlington, R. 2	Grade	19
Wilde, Rudolph, Thiensville	Grade	14
Williams, H., Wales	Grade	12
Williams, J. H., Waukesha, R. 1	Registered	40
Williams, Roger, Picketts	Grade	27
Willie, Ed., Thiensville	Grade	13
Wilson, H. J., Rusk Lake	Registered	32
Winkler Bros., Burlington, R. 4	Grade	32
Wolf, Wm., Elmwood, R. 2	Grade	25
Woodcock, E. R., Chilton, R. 4	Grade	17
Wright, Oliver, Iola	Grade	11
Zahorik, Joseph, Cato	Registered	14
Zillisch, G. F., Johnson Creek	Reg. & Gr.	22
Zipperer, Alphones, Manitowoc, R. 5	Grade	19
Zuern, Frank, Hartford	Grade	13
Zymanski, Ignats, Antioch, Ill.	Grade	20



Holsteins

The following Holstein breeders are members of the Wisconsin Dairymen's Association. The number signifies the cows in milk in his herd.

Achenbach, Chas., Manitowoc	Registered	18
Addichs, Wm. and Sons, Platteville	Grade	12
Agnew and Marquart, Milton Junction	Grade	19
Ahlers, Walter, Grafton	Registered	16
Allen, Alvin and Geo., Oshkosh, R. 3	Registered	11
Allen, D. K., Oshkosh	Registered	20
Allen, Frank, Omro	Grade	14
Allen, John L., Fond du Lac, R. 2	Grade	15
Alswede, Richard, Manitowoc, R. 2	Grade	12
Amidon, Gilbert & Son, Brooklyn	Grade	20
Armitage, Harry, Dale, R. 1	Reg. & Gr.	9
Anderegg and Kabley, Monroe	Reg. & Gr.	29
Anderson, Joe, Winneconne	Grade	17
Anderson, John, Spring Green	Reg. & Gr.	18
Arntson, Geo., Menomonie	Grade	10
Asmus, Elmer, Juda	Reg. & Gr.	29
Attridge, Frank, Baraboo	Grade	8
Backhaus, Otto C., Campbellsport	Grade	20
Bagly, Ralph H., Lake Beulah	Grade	12
Baird Bros., Waukesha	Registered	34
Baker and Onsrud, Stoughton, R. 1	Reg. & Gr.	19
Baker and Stearns, Waupun	Grade	15
Baker, T. W., Waunakee	Registered	48
Balis, Ernest & Sons, Footville	Registered	20
Ballbach, John, Milwaukee, Sta. D, R. 3	Grade	21
Bartel, Jos., Thiensville	Grade	15
Barthels, George, Two Rivers, R. 3	Grade	20
Bartholomew, M. C., Lodi	Grade	38
Basler, Mrs. Lillian, Oshkosh	Grade	16
Basset, F. E., Omro, R. 1	Registered	11
Bast, Jacob B., Richfield	Registered	16

Certified and Accredited

11 Years in D. H. I. A.

HOLWIS HOLSTEINS

Anthes and Ouweneel

:::

Fort Atkinson, Wis.

Bast, Paul J., Richfield	Registered	21
Beck, Geo., Burlington, R. 4	Reg. & Gr.	15
Beck, Louis, Oshkosh	Registered	14
Becker and Sons, Chas., Fort Atkinson	Registered	20
Becker, Edwin C., Fort Atkinson	Registered	10
Bee, Tom, Richland Center	Grade	32
Beilke, Walter, Fairwater	Registered	28
Benash, E. C., Janesville	Grade	17
Bender, Blake, Viola	Grade	13
Bennett, Harold, Oakfield	Registered	21
Bergel, Frank, Two Rivers, R. 3	Grade	25
Betry and Son, H. W., Berlin	Registered	19
Bie and Sons, George H., Racine	Registered	13
Bingham, Merrill, Milton	Registered	10
Bird, Bennet S., Oakfield, R. 3	Registered	15
Bird, Robert, Oakfield, R. 3	Registered	21
Bird, Sidney, Jr., Oakfield, R. 3	Grade	16
Bird, S. H., Sr., So. Byron	Registered	9
Blackmore Bros., Campbellsport	Registered	30
Blade, Wm., Benton	Grade	17
Blaka, Victor, Two Rivers, R. 1	Grade	20
Blake, Mrs. Ida and Son, Menomonie	Grade	18
Blakeley, George, Viola	Grade	12
Blanck, Ben F., New Holstein, R. 2	Grade	22
Blank, Ray, Grafton	Registered	14
Bloom, Frank, Monroe	Registered	29
Boche, Walter, Oshkosh	Grade	20
Bodden, Hubert, Theresa	Grade	14
Boeck, A., and W. Heindel, South Wayne	Grade	17
Boehnlein, Gregor, New Holstein, R. 2	Grade	21
Borchardt and Son, Aug., Brandon	Grade	22
Borchardt, Herman, Brandon	Grade	19
Borgwardt, Christ, Valders	Registered	21
Boss, John, Oshkosh	Grade	29
Bottrell, Milfred, Dale, R. 1	Reg. & Gr.	9
Bowen and Son, H. D., Orangeville, Ill.	Registered	32
Bricton, Anfin, Deerfield	Reg. & Gr.	40
Brown, Mrs. Emma, Brooklyn, R. 3	Grade	7
Branders, Walter, Burlington, R. 4	Grade	16
Braun, Henry, Eden	Registered	16
Brewer, B. F., Berlin	Registered	25
Brown, Geo., Edgerton	Grade	18
Brumm Bros., Verona, R. 1	Grade	31
Brumm, C. and E., Verona, R. 1	Grade	24
Buehring, Herman, Oshkosh	Grade	18
Buss, W. G., Belmont	Registered	21
Cahill Bros., Grimms	Grade	26
Cain, P. H., Elkhart Lake, R. 2	Registered	24
Cairns and Son, C. W., Mazomanie	Reg. & Gr.	12
Calhoun, Andrew, Stoughton, R. 3	Reg. & Gr.	12
Carlson Bros., Boyceville	Reg. & Gr.	15
Carlson, Carl, Boyceville	Reg. & Gr.	10
Carnes, Fay, Fort Atkinson, R. 2	Registered	20
Carpenter, Charles, Hortonville, R. 1	Registered	12
Carroll, Frank, Waukesha, R. 1	Grade	19
Chilson and Froeming, Harvard, Ill., R. 3	Grade	26
Christensen, Harry, Larson	Grade	15
Christianson, Peter, Sheldon	Grade	34
Cisler, Chas., Manitowoc, R. 5	Grade	20
Clark, Ben, Mukwonago	Reg. & Gr.	30

T. B. and Negative

13 Years C. T. A.

HARVDALE FARM

Mrs. Louise Buth & Son

Oconomowoc, Wis.

The
**PROVING
GROUND**

*900 Registered
Holstein Cows*

PROVING—

Their right as dairy cows in the
HERD TEST

PROVING—

Their right as brood cows by
continuous HERD TEST

PROVING—

Their sire's transmitting ability by
the HERD TEST

We want to help all Wisconsin
cattle breeders breed better
cattle. Our experience, our
help, our encouragement await
your call.

**The WISCONSIN
BOARD of CONTROL**

G. M. Householder, Farm Supervisor

MADISON

WISCONSIN

Registered Holsteins

Bangs Free Herd

3 Years in D. H. I. A.

Mutual Ollie Fayne

824011

BORN OCTOBER 29, 1922 (In Our Herd Today)

BROOD COW—7 tested daughters averaging on twice-a-day milking, 305 days and at maturity 487 lbs. fat.

3 Bull Calves For Sale

Harold Draeger, Fort Atkinson, Wis., R. 1, Box 141

Clark, Leon, Mayville	Registered	20
Classen, H. C., Winneconne	Reg. & Gr.	22
Cockeram, Willis, Menomonie	Reg. & Gr.	10
Columbia Co. Asylum, Wyocena	Registered	28
Columbus Food Corp., Columbus	Grade	20
Condon and Schmidt, Brodhead	Registered	46
Connell, James, Genesee Depot	Grade	23
Conrad, Edgar, Elkhart Lake, R. 2	Grade	15
Conrad, John, West Allis, R. 4	Reg. & Gr.	20
Conway Farms, Inc., Janesville, R. 3	Registered	65
Cox, John, Omro	Grade	12
Coon, Todd & Son, Milton Junction	Registered	30
Cuff, O. P., Hortonville, R. 2	Reg. & Gr.	25
Curtiss, H. W., Rio	Registered	8
Daniels, Emil, Kansasville	Grade	20
Daniels, Max, Union Grove	Grade	18
Dearhammer, Harvey, Beloit, R. 4	Grade	30
De Bell and Son, P. M., Bristol	Reg. & Gr.	21
Delsman, Frank, Jr., Manitowoc, R. 6	Grade	13
Dernovsek, Lucas, Sheldon	Grade	18
Dettwiler, Arnold, Verona	Grade	30
Dickrell, Jacob, Elkhart Lake, R. 2	Grade	18
Dittmar, Roland, So. Milwaukee, R. F. D.	Registered	12
Dobberstein, John, Hortonville, R. 2	Grade	18
Donovan, Leo, Van Dyne	Grade	20
Doornbrook, O. H., Brandon	Registered	21
Dorchner, Otto, Hortonville, R. 2	Grade	23
Douglas, M. M. and O. M., Brodhead	Registered	20
Draeger, Emil, Fort Atkinson, R. 4	Registered	16
Draeger, Harold, Fort Atkinson	Registered	20
Dreger, Emil, Madison, R. 6	Registered	25
Duel, Myrton, Fond du Lac, R. 3	Registered	13
Ebersohl, Walter, Fort Atkinson, R. 4	Grade	20
Eckardt, Edward, Mishicot, R. 1	Grade	19
Eckel, Henry M., Hales Corners	Reg. & Gr.	22
Eckstein, Coleman, Winneconne	Grade	22
Eckstein, Earl, Larsen	Grade	17
Egan and Sons, Mrs. Laura, Orfordville	Grade	35
Ehm, William, Appleton	Grade	10
Eide and Osgaren, Stoughton, R. 2	Grade	11
Ellickson, Alfred, Rio	Grade	10
Ellis, Harold, Omro	Grade	22
Emmertson, Emmel, Racine, R. 2	Reg. & Gr.	20
Ennis, Dr., Shullsburg	Grade	17
Erfenth, Herman, Verona	Grade	19
Eschenbach, Wm., Merrimac	Registered	8
Evenson, Hans, Menomonie	Grade	16
Evenson and Osgaren, Stoughton, R. 2	Grade	17
Ewald, Wm., Mayville	Grade	29
Falk, Jacob, Hales Corners	Grade	9

Home of Carnation Inka Prince

whose first 13 tested daughters averaged 859 lbs. or 114 lbs. more than their dams, thus giving him a fat index of 967 lbs.

ALFRED GODFREY FARM

Lima Center, Wis.

T. B. Accredited

Bang's Tested

HOLSTEINS

ESTABLISHED 1877 BY H. TRUMPY, SR.

ONE OF OLDEST HERDS IN U. S. A.

CONTINUOUS HERD TESTING SINCE 1920

PRESENT HERD SIRE—

HOESLY JOE PIEBE HOMESTEAD

Carries Blood of "North Star Joe Homestead" and
"Sir Inka May" on Both Sides

Dam—State Record 3-yr.-old, 305 days, 14,363 milk, 553.4 fat

FRANK TRUMPY

1 Mile Off Highway 69

Clarno, Wisconsin

Farmers and Merchants Bank, Jefferson	Registered	25
Farr, G. H. P., Waukesha, R. 2	Grade	11
Faulks, Rufus C., Iola	Grade	7
Feaster, Henry, Richland Center	Grade	20
Fenerhammer, John, Campbellsport	Grade	14
Figl, Wm., Argyle	Registered	28
Field, Bert, Elroy	Grade	14
Field Bros., Mt. Horeb	Grade	33
Flood, Maurice, Campbellsport	Grade	16
Fond du Lac Co. Farm, Fond du Lac, Box 346	Reg.	12
Forrest and Morgan, Reedsburg	Registered	23
Frederickson, Harley, Hubertus	Registered	12
Frey, Louis W., Hartford	Registered	15
Friday, John, Oregon	Registered	20
Fuchs, Ed., Spring Green	Grade	20
Fuller, Thos. G., Eden	Grade	18
Gallman, Jake, Fort Atkinson, R. 4	Reg. & Gr.	20
Gengler, F. J., Sta. F. R. 10, Milwaukee	Reg. & Gr.	16
Gensmann, E. B., Slinger	Grade	17
George Bros. and Ryner, Janesville, R. 5	Grade	31
Gepke and Sons, R. A., Oregon, R. 2	Registered	16
Getchman, Schuyler, Baraboo	Registered	23
Giese, Harold, Prairie du Sac	Grade	16
Gillingham, Bernard, Richland Center	Grade	17
Ginter, George, Reedsville	Grade	19
Glover, A. J., Fort Atkinson	Reg. & Gr.	45
Godfrey, A. L., Milton Junction	Registered	32
Goff and Son, W. H., Bruce	Registered	7
Gomcinder, Joe, Sun Prairie	Grade	16
Goodman Bros., Wonewoc	Registered	20
Green County Farm, Monroe	Grade	56
Greene and Hull, Milton	Registered	21
Grenzon, Geo., Juda	Registered	24
Grimm, Adolph, Two Rivers, R. 1	Grade	22
Griswold, R. R., Dale, R. 1	Grade	13
Gross, Frank, Hillsboro	Reg. & Gr.	12
Gross, Henry, St. Cloud, R. 2	Reg. & Gr.	22
Gross, Lloyd, Knapp	Reg. & Gr.	18
Groth, Ervin, Grafton	Grade	20
Grundy, Aug., Oshkosh, R. 6	Grade	37

Guenther, Allen, R. F. D., So. Milwaukee	Reg. & Gr.	11
Gulkson, Iver, Manitowoc	Grade	11
Gustafson, David, Clinton	Grade	25
Haberman and Son, Henry, Monroe	Registered	24
Haberman, E. P., Juda	Registered	36
Hahn, Wm. J., Reedsburg	Registered	12
Hake, Ira, Menomonie	Grade	11
Halverson, W. C., Deerfield	Reg. & Gr.	32
Halvorson, Geo., Menomonie	Reg. & Gr.	16
Hamman, Alvin, Johnson Creek	Grade	18
Hanke, Chas., Fremont	Grade	18
Hansen, Orville, Hortonville, R. 2	Grade	16
Hansman & Wilcox, Knapp	Registered	22
Harmon, Tony, Arkansas	Grade	18
Harness, Everett, Neenah	Grade	25
Harris and Son, Bert, Richland Center	Grade	22
Hart, Ray, Neenah	Grade	18
Hartman, Leonard, Lodi	Grade	30
Hartman, Walter, Lodi	Grade	24
Hedlund, W. E. & M. R., Boyceville	Reg. & Gr.	14
Hegy, George, Hartford	Registered	22
Heimerman, A. F., Chilton, R. 5	Grade	17
Hein, Herbert, Marshall	Grade	30
Heinrich, Walter, Hales Corners	Reg. & Gr.	12
Held, Edgar, Slinger	Grade	10
Held, Edwin J., Hartford	Reg. & Gr.	12
Held, Henry, Slinger	Reg. & Gr.	14
Held, John, Slinger	Grade	17
Held, Robert, Slinger	Reg. & Gr.	20
Helgeson, Albert, Valders	Grade	16
Helm, Herbert, Winneconne	Grade	23
Helmer, Wayland S., Campbellsport	Grade	6
Hemzelman, M. H., Ripon	Registered	12
Henkel, Hubert, Winneconne	Reg. & Gr.	14
Herman, Walter, Manitowoc, R. 5	Grade	18
Herwig, R. B., Morrisonville	Grade	24
Hetts, Roy, Fort Atkinson, R. 1	Registered	16
Hildebrand, Lyall, Picketts	Grade	16
Hill, Harry E., Sheboygan	Registered	60
Hinckley, Howard, Campbellsport	Grade	6
Hinkins Farms, Belmont	Grade	19
Hobberger and Son, John, Fremont	Registered	23
Hoel Bros., Cornell	Grade	20
Hoewisch, Carl, Fremont	Grade	18
Hoffman, Henry J., Lyons, R. 1	Reg. & Gr.	12
Hofland, Edw., Menomonie	Registered	45
Hogan State Farm, Waunakee	Registered	26
Holte, Oscar, Stoughton, R. 1	Reg. & Gr.	19
Hooper, Gilbert, Palmyra, R. 1	Grade	12
Hopkins, J. W., Morrisonville	Grade	24
Hornung, Waldo, Fond du Lac, R. 1	Grade	11
Hovey, Wm. P., Campbellsport	Grade	14
Hubbard, Grover, Rio	Grade	25
Huebbe, Edgar, Beloit, R. 6	Registered	20
Huebner, Harvey, Iola	Grade	14
Hughes Bros., Waukesha	Grade	28
Hughes and Son, Chas., Campbellsport	Grade	16
Hughes, Geo., Omro	Registered	28
Hughes, Whilden, Janesville, R. 7	Registered	30
Hughes, Wm. H., Janesville, R. 3	Registered	18
Huntington, Harold, Platteville	Grade	18

T. B. and Bang's Accredited

17 Yrs. in D. H. I. A.

Home of

"Dean Colantha Ormsby 541114"

Living Proved Sire with an Index on 24 pairs of
516 lbs. fat, 3.69% fat.

Write Us For Information on Better Breeding Stock

JOHN H. PESTER

:::

WHITEWATER, WIS.

Buy a Milford Meadows BULL

*to increase the average test
of Your Herd*

In C. T. A. and H. I. R. our herd of 175 head of purebred registered Holsteins has averaged over 3.7% for three consecutive years. All our herd sires are from high testing families.

M. M. KING ORMSBY 516202

From a 1148-lb. 4.2% granddaughter of old S. P. O. M. Leading Index Sire State of Iowa, 1934. His first 14 daughters averaged 611.6 lbs. fat (twice-a-day milking, records figured to maturity). Daughters showed an increase of 121.6 lbs. over dams.

Daughters averaged3.87%
Dams averaged3.4 %

SIR BESS ORMSBY GREAT 651734

From a 1078-lb. $\frac{3}{4}$ sister to Sir Inka May. His two-year-old daughters are making good records.

KING BESSIE ORMSBY PIETERTJE 57TH 669546

From a 1004.0-lb., 3.8% daughter of Tritomia Pietertje Ormsby. Sired by King Bessie Ormsby Pietertje. His daughters not yet milking, but he is siring excellent type.

A son of any of these bulls, from a dam with a C. T. A. or semi-official record, should give you the desired TEST, TYPE and PRODUCTION!

MILFORD MEADOWS STOCK FARM

John Last, Manager

LAKE MILLS

:::

WISCONSIN

Immel, Albert, Fond du Lac, R. 3	Registered	21
Immel, Earl, Fond du Lac, R. 2	Grade	22
Iverson and Aberg, Stoughton, R. 1	Registered	9
Jefferson County Asylum, Jefferson	Registered	60
Jenny, Ben, Monroe	Registered	32
Jensen, J. P. and Son, Scandanavia	Grade	14
Jensen, Victor, Racine, R. 2	Reg. & Gr.	16
Jerkish, Frank, Sheldon	Registered	12
Johannes, Albert, Two Rivers, R. 3	Registered	24
Johnson, C. A., Boyceville	Grade	8
Johnson Dairy, Stoughton, R. 3	Grade	29
Jones, John D., Jr., Racine	Grade	25
Jorgensen, J. E., Neenah	Registered	11
Junk, Joseph, Manitowoc, R. 6	Registered	30
Justus, G. J., Holcombe	Registered	22
Kahler, Chas., Hillsboro	Grade	18
Kahler, Harley, Hillsboro	Registered	12
Kammerer, Martin, Elkhart Lake, R. 2	Registered	18
Kapffmann, A., Dale, R. 1	Grade	32
Karsted, Art, Newton	Grade	17
Karlin, H., and Chas. Barlow, Darlington	Grade	28
Karrils, Anton, Eagle, R. 2	Grade	21
Kauper, John, Hartford	Reg. & Gr.	11
Keitel, Edwin, Prairie du Sac	Registered	16
Keil, Oscar, Manitowoc, R. 5	Grade	12
Keller and Sons, Ed., Richland Center	Grade	30
Keller, Lester, Richland Center	Grade	26
Kerkman, Joe A., Burlington	Grade	20
Kessler, Harold, Burlington, R. 4	Reg. & Gr.	18
Keyes, Glenn, Richland Center	Registered	40
Keuler, Joseph, Kiel, R. 2	Registered	14
Kienbaum, George, Whitewater	Grade	13
Kindschi Bros., Prairie du Sac	Registered	23
King, Don, Eau Galle	Grade	18
King, Stephen, Eden	Grade	21
Kirk, Henry, Omro	Registered	14
Kirk, W. R., Omro	Registered	16
Klofander, Rueben, Racine, R. 1	Reg. & Gr.	17
Klutmeyer, Glenn, Brodhead	Grade	15
Knick, Gus, Hillsboro	Registered	19
Koepke, Donald, Eldorado	Grade	21
Koeser, Herman, Kiel, R. 2	Registered	10
Kollander, Mrs. Mary, Richfield	Grade	15
Komp, Herman, Hartford	Grade	16
Korb, Gottfried, St. Cloud, R. 2	Grade	24
Krift, Wm., Burlington	Grade	12
Krings, Paul, Winneconne	Grade	29
Kroehler, John, Richfield	Registered	10
Krueger, Emil, Kaukauna	Reg. & Gr.	12
Krumpke, Elmer, So. Beloit, Ill.	Grade	18
Krupp Bros., New Holstein, R. 2	Grade	18
Kuehl, Martin, Fremont	Grade	21
Kuhaupt Bros., Slinger	Grade	21
Kuhn, John, Elkhart Lake, R. 1	Grade	12
Kundert, Thos., Brodhead	Grade	25
Krumhus, E. W., Thiensville	Grade	14
Kurtze, Lloyd, Hales Corners	Reg. & Gr.	16
Ladwig, Wm. R., Colgate	Grade	13
La Fayette County Farm, Darlington	Grade	35
Laird, George, Black Creek	Grade	12
Lane, Ed., Mukwonago, R. 1	Grade	29
Langerfeld, Paul W., New Holstein	Grade	12
Larson, Arnold, Oak St., Stoughton	Registered	15
Laun, J. B., Kiel	Registered	31
Lawton, Ray, Viola	Grade	18
Lawrence, Claude R., La Valle	Registered	12
Layton, Howard, Waupaca	Registered	16
Lellock, Erwin, Appleton, R. 1	Grade	18
Lemmenes, Andrew, Waupun	Grade	12
Leondale, Raymond, Shullsburg	Grade	15
Lepien, Art, Hartford	Registered	14
Lepien, Herbert, Hartford	Registered	12
Lepien, Raymond, Hartford	Registered	16
Leist, Mrs. Laura, Manitowoc, R. 6	Grade	13
Lerch, F. W., Boyceville	Grade	10
Linstedt, F. W., Colgate	Grade	14
Lochn and Henning, Eldorado	Grade	26
Louuts, Will, Oostburg	Registered	30
Loos and Son, Mrs. George, Hartford	Grade	18
Lorenz, Emil, Two Rivers, R. 3	Grade	24
Ludlow and Schild, Monroe	Grade	32

MAYTAG'S CEYLON COURT FARM

75 head REGISTERED HOLSTEINS, popular breeding. Continuous A. R. S. O. and 6 yr. D. H. I. A. testing. Thousand pound sires in service. 1 proven sire. We invite your inspection and correspondence.

Accredited — Negative

G. D. GILBERT, Mgr.

Lake Geneva, Wis.

Luebke, Mrs. Ella, Oshkosh	Grade	19
Luhn, August, Theresa	Grade	14
Lunenschloss, F., Richland Center	Grade	23
Lutheran Home Farms, Stoughton, R. 1	Registered	18
Lutterman, Wm. H., Loganville	Registered	15
Lyken, Julia, Valders	Grade	18
Majerus, Wm., Campbellsport	Grade	16
Malone, John, West Allis, R. 4	Reg. & Gr.	9
Manitowoc County Asylum, Manitowoc	Registered	45
Mante and Son, H. C., Hartford	Grade	14
Mantz and Son, Robert, Richfield	Grade	14
Markham, M. B., Eagle, R. 2	Grade	9
Markham, L. A., Janesville	Reg. & Gr.	50
Marlborough, George, Cato	Grade	19
Marshall, J. J., Cazenovia	Registered	11
Martin, Carl, Fremont	Grade	19
Martin and Son, Everett, Mukwonago	Registered	18
Martin, Fred, Marshall	Grade	24
Martinson and Hogie, Stoughton, R. 4	Grade	14
Marquart Bros., Knowles	Grade	14
Marx, Geo. F., Fisk	Grade	14
Mauer, Henry, Richfield	Grade	12
May, Ed, Salem	Grade	35
Mayer, Christ, Richfield	Reg. & Gr.	15
Mayer, Victor, Mayville	Registered	14
Maytag's Ceylon Court Farm, Lake Geneva	Registered	75
McClain, R. C., Oakfield, R. 3	Grade	14
McKee Bros., Madison, R. 5	Grade	35
McNamara, J. F., Campbellsport	Grade	16
McNamara, Steve J., Eden	Grade	20
Meacher, Dr. B. O., Pardieville	Grade	23
Meadow Springs Farm, Peebles	Registered	33
Mechenick, Wm., Slinger	Grade	16
Messmer Bros., Two Rivers, R. 1	Grade	20
Metzig, Erwin, Larsen	Grade	19
Metzig, Fred, Neenah	Grade	14
Meyer, Albert, Jr., Hales Corners	Registered	11
Meyer, Alfred J., Hales Corners	Reg. & Gr.	17
Meyer, Herbert, Baraboo	Registered	13
Meyer, Joseph, Cato	Grade	16
Miller, Ben, Juda	Registered	25
Miller, Emil and Walter, Fisk	Registered	19
Miller, Mrs. D. M., Menomonie, R. 5	Grade	13
Miller, Wesley, Burlington, R. 4	Grade	12
Mil. Co. House of Correction	Registered	40
Milwaukee Co. Institution, Milwaukee	Registered	110
Miracle, A. H., Winneconne	Grade	22
Miracle, Warren, Oshkosh, R. F. D.	Grade	15
Mohrhusen, Clarence, Colgate	Grade	17
Mondlock, J. N., Port Washington	Grade	23
Monson, Martin O., Gratiot	Grade	18
Morgan, W. B., Whitewater	Reg. & Gr.	25
Morgan and Sons, W. B., Avalon	Grade	18
Morton, Jesse, Argyle	Grade	22
Moser, Theo. F., Allenton	Reg. & Gr.	15
Much, Ollie, Palmyra, R. 1	Grade	38
Mueller, Charles, Mishicott, R. 1	Grade	23
Mueller, Hilmer, Seymour	Reg. & Gr.	28
Murphy, Wm. J., Campbellsport	Grade	15
Nace Est., F. A., Iola	Registered	24
Nehbrass Bros., Richfield	Registered	22

Neispodzain, Roman, Manitowoc	Grade	18
Nelson, Harvey A., Union Grove, R. 2	Registered	28
Neuman, Adolph, Fremont	Grade	26
Neumann, A., Readfield	Grade	25
Neuschafer, Franklin, Fremont	Grade	23
Nielsen, G. M., Knapp	Reg. & Gr.	28
Noegel, Matt, Richfield	Grade	13
Nokes, Kenneth, Palmyra, R. 1	Grade	15
Normandy State Farm, Madison, R. 6	Registered	28
Norris Farm, Mukwonago	Registered	20
Northern Hospital, Winnebago	Registered	107
Norton, Chester, Monroe	Registered	24
Nuland, Bernard, Edgerton, R. 6	Grade	10
Nygaard, Jergen, Stoughton, R. 2	Grade	15
O'Brien, Wm., Campbellsport	Grade	28
Oconnell Bros., Grimms	Registered	24
Oettmier, John, Jefferson, R. 2	Reg. & Gr.	18
O'Harrow, Chas., Fisk	Registered	11
O'Neil, D. H., Rosendale	Registered	12
Opperman, Fred, Tigerton	Grade	15
Oregon State Farm, Oregon	Registered	33
Outagamie Co. Asylum, Appleton, R. 1	Grade	56
Ouweneel, Chet, Fort Atkinson, R. 1	Registered	20
Overby, Simon, Menomonie	Grade	9
Pagel, Wm., Malone	Grade	26
Palmbach, George, Appleton, R. 1	Reg. & Gr.	11
Paulson, Reuben, Riley	Reg. & Gr.	35
Pausic, Fred, Fisk	Registered	19
Peck, Willis, Menomonie	Grade	36
Perry Bros., Fort Atkinson, R. 2	Grade	25
Persinger, Harrison, Richland Center	Grade	17
Pester, Clarence J., Whitewater, R. 2	Registered	25
Pester, John, Whitewater, R. 2	Registered	25
Peter, George, Fremont	Grade	17
Peterson and Helickson, Stoughton, R. 2	Reg. & Gr.	10
Peterson, Lawrence, Fort Atkinson, R. 4	Registered	20
Peterson, Oscar F., Scandanavia	Registered	13
Pickering and Tropel, Muscoda	Grade	23
Pieper, H. F., Eden	Registered	18
Pinnov, Otto, Clarno	Reg. & Gr.	24



**ONE
OF
OUR
HERD
SIRE**

**CARNATION
SENSATION**

Sire of Pabst Cascade Heather, All-American 4-yr.-old 1935 and many other prize winners. His 25 tested daughters produce more than their dams and test higher. Twenty-two of them test between 3.5% and 4.4%. His 22 daughter-dam pairs give him a Class A mature index of 848 lbs. of fat with a test of 3.9%. They include every daughter out of a tested dam that has freshened in our herd. Good udders are characteristic of his daughters. A son or a grandson will make you a good herd sire.

PABST FARMS

ACCREDITED NEGATIVE

F. J. SOUTHCOTT, Supt. OCONOMOWOC, WIS.

Jefferson County

has the greatest Concentration of Dairy Cows in the world. Over 1,200 Registered and Grade herds to select from.

MANY herds in the Dairy Herd Improvement Associations and doing creditable work.

Many of our herds are headed by Proven Sires or Sons of Proven Sires.

Whatever your wants, one cow or a carload, get in touch with us.

JEFFERSON COUNTY HOLSTEIN BREEDERS' ASSOCIATION

Fort Atkinson, Wis.

C. L. Ouweneel, Sec.

One Day Production Shows

Sponsored by The Wisconsin Dairymen's Association

A comparatively new phase of dairy activity is making a start in Wisconsin this year. Production Shows have been held successfully in several other states and foreign countries, and many Wisconsin counties have started planning for such a show in 1936.

The shows will be planned for one day only, which will permit the busy farmer to exhibit his animals without great loss of time. Fitting and showing will be minimized so that it will take less time to get ready for the show; or as one farmer expressed it "The idea is to show working cows in their working clothes."

In Wisconsin One Day Production Shows the animals will be classified so far as type is concerned into one of four groups: Excellent, Good, Fair or Poor, thus making it uniform in classification regardless of the competition.

Certificates will be awarded to the owner of every animal shown, these certificates to state the production, type classification and owner's name.

For Further Particulars Write

A. C. THOMSON, Fieldman
WISCONSIN DAIRYMEN'S ASSOCIATION
Fort Atkinson, Wis.

Pipkorn, Gust, Cedarburg	Grade	17
Potvatz, Albert, Oshkosh	Registered	21
Priepke, Ed, Eldorado	Grade	31
Prindle, Irvin, Campbellsport	Grade	14
Quandt, Wm. F., Hartford	Grade	30
Quegley, Leon, Winneconne	Grade	25
Racine County Asylum, Racine	Reg. & Gr.	75
Raduege, Wm., Mukwonago, R. 2	Grade	19
Raquet, Mrs. Chas., Kiel, R. 3	Registered	13
Riewesthal, Alfred, Hales Corners	Reg. & Gr.	16
Rens, Matt, Brandon	Grade	36
Rhode and Stearns, Waupun	Grade	30
Rhyner, Jake, Jr., Brodhead	Grade	29
Richland County Asylum, Richland Center	Reg. & Gr.	32
Richart, Anton, Elkhart Lake, R. 2	Grade	14
Richter, Elmer, Burlington	Grade	22
Richter, Frank, Burlington	Grade	19
Rieder, John, Monroe	Grade	24
Robbins, Kenneth, Richland Center	Grade	19
Roberts, Roy, Orfordville	Reg. & Gr.	15
Rochl, Fred, Van Dyne	Grade	14
Rock County Farm, Janesville	Registered	58
Rockwell and Katterhenry, Beloit, R. 3	Reg. & Gr.	39
Roderich, Glenn, Clarno	Grade	29
Rosenkranz, Escol, Brownsville	Registered	16
Ruppert, Henry, Belleville	Grade	39
Rusch, Elmer E., Brownsville	Grade	12
Russell, Roland, Apple River, Ill.	Grade	20
Ruud, Edw. and Son, Menomonie	Reg. & Gr.	20
Sales, Elam, Fond du Lac, R. 1	Grade	16
Salvation Seminary, St. Nazianz	Registered	56
Sar Barth Farm, Hales Corners	Reg. & Gr.	21
Sauerhering and Peterman, Hartford	Grade	17
Savage Farm, Kansasville	Grade	8
Savage, John, Cato	Grade	20
Schliem Bros. and Heindel, South Wayne	Grade	40
Schluter, Henry, Baraboo	Grade	30
Schmidt, Emil, Allenton	Reg. & Gr.	16
Schmidt, A. Fred, Campbellsport	Grade	6
Schmitz, Martin, Fond du Lac, R. 2	Grade	21
Schneider, John, Cleveland	Grade	16
Schneider, Joseph, Kiel, R. 2	Registered	20
Schnieder, Mrs. Mary, Appleton	Grade	19
Schoessow, Bernhard, Thiensville	Reg. & Gr.	13
Schommer, Math, Campbellsport	Grade	18
Schott, Jake, Bruce	Grade	18
Schroeder, Christ, Neenah	Registered	12
Schroeder, H. W., Waukesha	Registered	16
Schueler and Amundsen, Cambridge, R. 3	Registered	24
Schuh, Anton, Hortonville, R. 2	Grade	25
Schuh, M. A., Hortonville, R. 2	Grade	17
Schultz, Arthur, Manitowoc, R. 2	Grade	22
Schultz, Lloyd, Hortonville, R. 2	Grade	17
Schultz, R. C., Black Creek	Grade	24
Schumacher and Zimmerman, Darien	Grade	17
Schumacker, Geo. & Son, Footville	Registered	20
Schumacher, H., Mukwonago, R. 1	Grade	13
Schuman, Chas. F., Whitewater	Grade	20
Schuricht, Louis, Elkhart Lake, R. 2	Grade	24
Schutts, Leonard, Boyceville	Grade	13
Schwartz Bros., Spring Green	Registered	23
Scott, Mrs. Nellie, Argyle	Grade	28
Sedgewick and Cole, Lime Ridge	Registered	15
Seefeldt, August, Theresa	Registered	20
Seefeldt, G. D., Theresa	Registered	12
Seefeldt, Martin, Theresa	Reg. & Gr.	6
Sheppert, Art, Jefferson, R. 2	Grade	12
Siebecker, L. R., Baraboo	Registered	18
Simons, S. B., Whitewater	Reg. & Gr.	22
Smithback, Ed., Fort Atkinson	Grade	20
Smith Bros., La Valle	Reg. & Gr.	28
Smith, Earl F., Reedsburg	Registered	12
Smith, Henry J., Whitewater	Registered	28
Smith, Rufus, Mukwonago	Registered	28
Smith, Thomas D., Boyceville	Reg. & Gr.	17
Sneen, Loule, Menomonie	Reg. & Gr.	9
Sommans, Leo, Campbellsport	Grade	16
Sorenson, Louis, Larson	Registered	9
Sosinske and Miller, Waupaca	Registered	18
Stack, George, Eden	Grade	20
State Colony Farm No. 1, Waunakee	Registered	59
Stauffacher, Mrs. John, Calamine	Grade	50

60,000 DAIRY CATTLE

Our lime stone soil and mineral waters make Waukesha County a desirable place to produce large, strong, vigorous, healthy animals. We can supply you with several carloads . . . cows and heifers.

Waukesha County Holstein Breeders' Ass'n

133 Barstow St.

Waukesha, Wis.

Stauffacher, M. H., Monticello	-----	Registered	24
State Hospital, Mendota	-----	Registered	26
Steckling, Henry, Fremont	-----	Grade	16
Steger, Rand E., Cedarburg	-----	Grade	26
Stephan, Mrs. Anna, Richfield	-----	Grade	17
Stevens, Chas. D., Jefferson, R. 2	-----	Grade	10
Stiegenthaler, F., and Barlow, Darlington	-----	Grade	38
Stommell, Charles, Hartford	-----	Grade	15
Strey, Charles, Hortonville, R. 1	-----	Grade	19
Strupp, Isidore, West Bend	-----	Grade	10
Strusinski, William, Freemont	-----	Reg. & Gr.	19
Stuesser, Eugene, Richfield	-----	Registered	17
Sweitzer, John, Hales Corners	-----	Reg. & Gr.	10
Sylvester and Epping, Salem	-----	Grade	16
Taylor, Frank, Janesville	-----	Grade	20
Templeton and Brown, Oregon, R. 2	-----	Grade	12
Terwilliger and Son, J., Orfordville	-----	Grade	14
Tesch and Son, Chas., Hartford	-----	Grade	12
Tessne, Melvin, Whitewater	-----	Reg. & Gr.	14
Thoma, Ernest, Sugar Bush	-----	Grade	35
Thompson, Elmer H., Quarry	-----	Grade	17
Thorson, O. M., Scandanavia	-----	Grade	11
Timm, Henry, Clarno	-----	Registered	32
Timm, Walter, Monroe	-----	Registered	20
Toelle, Ed., Burlington	-----	Grade	20
Torgerson, Edw., Menomonie	-----	Reg. & Gr.	12
Torgerson, O. Theo., Meridean, R. 1	-----	Reg. & Gr.	11
Tracy, Duane, Hillsboro	-----	Reg. & Gr.	20
Trapp, Lewis, Columbus	-----	Grade	14
Travnich, Joe, Hillsboro	-----	Registered	15
Treptow, Frank, Fond du Lac, R. 1	-----	Grade	18
Trieckel, M. R., Campbellsport	-----	Grade	21
Trumpy, Frank, Clarno	-----	Registered	40
Trumpy and Frenzel, Clarno	-----	Registered	25
Turba, Henry, Elkhart Lake, R. 2	-----	Grade	12
Turnmire, Evan, Eagle, R. 2	-----	Grade	9
Uhlenbrauck, Emil, Freedom	-----	Registered	15
Unser, C. F., Arkansas, R. 1	-----	Grade	18
Uren, F. J. & Sons, Stockton, Ill.	-----	Reg. & Gr.	30
Uren & Robertson, Argyle	-----	Grade	50
Vanalstine, E. N., Omro	-----	Registered	11
Van Der Zee, Henry, Silver Lake	-----	Grade	12
Van Drisse, Jule, Two Rivers, R. 3	-----	Grade	20
Van Valen, Sidney, Lake Beulah	-----	Grade	15
Vas, Hugo, Burlington, R. 4	-----	Grade	30
Voelkerng, J. J., Burlington	-----	Reg. & Gr.	14
Voland, Ervin, Cedarburg	-----	Registered	12
Voight, A. H., Valders	-----	Grade	33
Voight and Rhein, Lomira	-----	Registered	10
Waffenschmidt, R. H., Prairie du Sac	-----	Registered	11
Ward Bros., Avalon	-----	Reg. & Gr.	40
Ward Bros., Fort Atkinson, R. 4	-----	Registered	18
Warner, W. H., Salem	-----	Registered	15
Warren, Robert, Burlington	-----	Grade	24
Wasserbach, Mrs. Louise, Appleton, R. 1	-----	Grade	16
Waukesha County Farm, Waukesha	-----	Reg. & Gr.	40
Waukesha Industrial School, Waukesha	-----	Registered	140
Weber, Mike, Elmwood, R. 2	-----	Grade	22
Weckler Bros., Fort Atkinson, R. 2	-----	Registered	25
Weickert, Walter, Appleton	-----	Reg. & Gr.	20
Weirich, Arthur, Merrimac	-----	Grade	12

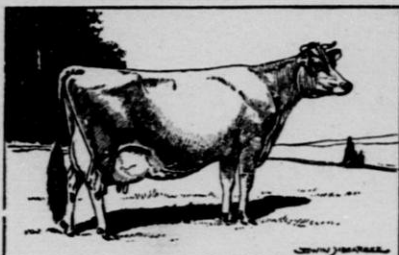
Wepking, Fred, Richland Center	Grade	10
Wentworth, H. S., Edgerton	Reg. & Gr.	21
Wentzel, Frank, Winneconne	Grade	40
Weld and Bark, Holcombe	Grade	18
Wesener, Carl, Mayville	Grade	40
West, H. C., Mukwonago, R. 1	Grade	41
White, Lee A., Darlington	Reg. & Gr.	12
Widman, Mrs. John, Jefferson	Registered	10
Wiedmeyer, A. A., Jr., Richfield	Registered	19
Wieland Farm, Beloit, R. 2	Registered	28
Wilms, Wm., Manitowoc, R. 6	Grade	14
Wilsie, Walter, Brandon	Registered	19
Winnebago Co. Asylum, Winnebago	Registered	62
Wisconsin School for Blind, Janesville	Registered	25
Wis. State Prison, Waupun	Reg. & Gr.	127
Witte, Oscar, Mishicot, R. 1	Registered	21
Wittig Bros., Hartford	Registered	11
Woemer, Louis, Plymouth	Reg. & Gr.	26
Wolf, E., Jr., Elmwood, R. 2	Grade	12
Wolf, R. H., Fond du Lac, R. 1	Grade	14
Woolsey and Davis, Clinton, R. 2	Grade	30
Wyso, Fred, Boyceville	Grade	20
Yahski, Geo. and Leonard, Burlington, R. 2	Grade	20
Zichert Bros., Rosendale, R. 1	Grade	24
Ziebarth, E. J., Columbus	Grade	24
Zimmerman, Sam, Belleville	Registered	29
Zipperer, Urban, Cato	Grade	25
Zuehlke, O. A., Oshkosh	Registered	14
Zuelkes, Leon, Markesan	Reg. & Gr.	29



Jerseys

The following Jersey breeders are members of the Wisconsin Dairy-men's Association. The number signifies the cows in milk in his herd.

Blank, Alvin, Grafton	Grade	13
Bleser, Arthur, Two Rivers, R. 3	Grade	16
Broadland Farms, Eagle, R. 1	Grade	40
Chilson and Dresser, Harvard, Ill., R. 3	Grade	24
Cisler, G. E., Valders	Registered	24
Connell, J. R., Rockton, Ill., R. 1	Registered	16
Craigknoll Farm, Janesville	Registered	10
Craig, Walter, and Ed. Tess, Milton	Registered	18
Douglas, Ellis, Janesville, R. 5	Grade	20
Eddy, Fred, Beloit, R. 4	Grade	31
Freeman and Decker, Beloit, R. 7	Registered	15
Gil-Bar Farm, Janesville	Registered	50
Hoffman, John, Grafton	Registered	22
Karnes, Ed. and Son, Menomonie, R. 5	Grade	23
Kilsey, Bert, Richland Center	Reg. & Gr.	16
Knight, Wm. M., Eagle, R. 2	Registered	63
Kolowrat, Edw., Kendall	Registered	9
Kolowrat, Frank, Jr., Hillsboro	Reg. & Gr.	9
Lovejoy Estate, Janesville, R. 5	Grade	35
Meier, Joseph, Jr., Chilton, R. 5	Grade	14
Perry, Stanley, Evansville	Reg. & Gr.	22
Rheineck, Dr. A. F., Grafton	Registered	20
Rusch, Arnold, Valders	Grade	20
Schlies, Frank, Jr., Manitowoc, R. 2	Registered	10
Shearer, Dr. A. T., Edgerton	Registered	15
Snyder, Owen, Footville	Grade	15
Stelting, Vern, Ontario	Reg. & Gr.	23



You Can
Buy
Jerseys
with
Confidence

Own them with profit—

You can depend on Jerseys to be profit-making cows. They yield delicious, extra rich milk of highest food value which brings bigger cream checks and pleases the most discriminating retail customers. Jerseys have a long established record for producing this quality milk, averaging 5.36% fat, at the lowest feed cost per pound of butterfat. Early maturity and longevity increase their practical value as profitable dairy animals and their beauty and gentleness are most desirable characteristics. You will be proud of your Jersey herd. *Write for Jersey Facts.*

THE AMERICAN JERSEY CATTLE CLUB
324-WD West 23rd Street, New York, N. Y.

Think of **"Rock County First"** for Jerseys

More proved Jersey sires in Rock County than any other breed. More Jersey breeders in Rock County testing in D. H. I. A. than any other breed. For the Best in Jerseys, write

ROCK COUNTY JERSEY BREEDERS' ASSOCIATION
Walter S. Craig, Sec'y. Janesville, Wis.

CRAIG KNOLL FARM JERSEYS

FEDERAL ACCREDITED

NEGATIVE TO BANG'S

Continuously in D. H. I. A. Work Since 1920

Consistently Over 400 Lbs. Fat

J. A. CRAIG, Owner

JANESVILLE, WIS.

Fawn Dawn Farm

Producing Jerseys

10 consecutive years D. H. I. A. testing with an average of 7540 lbs. milk, 404 lbs. fat.

Twice-a-day milking.

Negative Herd

P. N. Steffanus, Delavan, Wis.

GIL-BAR FARM JERSEYS

2 Proved Sires in Service

"Blondine's Was Wanted"—8 tested daughters, one silver, one gold medal. All average 607 lbs. fat.

"Raleigh's Dairylike Majesty"—First ten tested daughters average 643 lbs. fat. A Tested Sire and a Silver Medal Sire.

Also in service, "Lassie's Oxford Design," a full brother to "Oxford Lassie's Design."

We're in the business of Proving Sires at Gil-Bar Farm.

STEWART BARLASS, Mgr.

JANESVILLE, WIS.

ELK - LAKE - FARM

Jersey Cattle — Fauvic's and Design's

E. C. Jacobs Estate

: : :

Elk Mound, Wis.

Agriculture Depts.

(243 MEMBERS)

Beaver Dam Dept. of Voc. Agriculture	-----	Beaver Dam
Belmont Dept. of Voc. Agriculture	-----	Belmont
Blair Dept. of Voc. Agriculture	-----	Blaire
Clayton Vocational Agric. School	-----	Clayton
Fort Atkinson Dept. of Vocational Agric.	-----	Fort Atkinson
Lake Mills Vocational Agric. Dept.	-----	Lake Mills
Oshkosh Dept. of Voc. Agriculture	-----	Oshkosh
Sturgeon Bay Dept. of Voc. Agriculture	-----	Sturgeon Bay
Tri County Union Free High School	-----	Tripoli
Tri County Vocational Agric. Association	-----	Tony
Union Free High School Agric. Department	-----	Wilmot
Wood County School of Agriculture	-----	Wisconsin Rapids



Shorthorns

The following Shorthorn breeders are members of the Wisconsin Dairy-men's Association. The number signifies the cows in milk in his herd.

Arnold and Sons, F. H., Janesville	Registered	10
Brewer, Floyd, Beloit, R. 7	Grade	8
Carrol and Son, J. A., Janesville	Registered	5
Dane County Farm, Verona	Grade	66
Dierken, Wm. H., Reedsburg	Registered	9
Gates and Bass, Beloit, R. 7	Grade	14
Little Est., Walter, Evansville	Registered	18
Marquart, D. P., Milton Junction	Registered	13
Marquart, R. E., Milton Junction	Registered	8
McCann and Son, J. J., Janesville	Registered	11
McClay Bros., Janesville	Registered	15
Mullendore, C. H., Viola	Grade	18
Rye, C. L. and Son, Avalon	Registered	15
Rye, Theo. and Son, Avalon	Registered	9
Sayre and Son, D. F., Edgerton	Registered	9
Wolf, E., Jr., Elmwood, R. 2	Grade	12

Miscellaneous

Achtung, Bernard	Columbus, R. 3
Adams, C.	Fall River
Appenfeldt, Arnold	Juneau, R. 0
Beaver Bay Stock Farm	Beaver Dam, R. 3
Becker Estate, H. A.	Juneau, R. 1
Bell, Frank	Columbus
Bender, Fred	Cleveland, R. 1
Beuchel, Edwin	Sheboygan
Biederman, Art	Columbus, R. 6
Blindauer, Edwin	Sheboygan
Bracken and Cox	Juneau, R. 1
Brandt, Harold	Sheboygan Falls, R. 1
Bussewitz, Wm. E.	Juneau, R. 3
Canniff, Hazen T.	Juneau, R. 3
Chandler and Witte Bros.	Cottage Grove
Christofer, Mrs. M. J.	Rio
Clark, Warren	Beaver Dam
Columbus Foods Corp.	Columbus, R. 3
Dahnert, E. A.	Juneau
Dreger, Frank	Iron Ridge, R. 1
Drews, Alvin A.	Burnett
Eke, B. W.	Bruce
Falkenstein, Wally	Lodi
Finley, C. B., Am. Guernsey Cattle Club	Minneapolis, Minn.
Fischer and Son, Louis	Cleveland, R. 1
Fosmark, Severt	Morrisonville
Franz, Ewald	Elkhart Lake, R. 1

Gando, L. H.	Burlington
Garbe, Henry F.	Chilton, R. 4
Geisler, John	Bruce
Godfrey, Marcin	Mineral Point
Guthman, Carl	Holcombe
Gutham, Otto	Holcombe
Gygi, Henry	Holcombe
Hamann, Harvey	Sheboygan
Hameister, Henry	Elkhart Lake, R. 1
Hembre, I. O., County Agricultural Agent	Barron
Hilgedorf, Emil	Juneau
Hornick, Mike	Sheldon
Hubbard Bros.	Rio
Huber, Geo., Jr.	Poynette
Johnson, John E.	Columbus, R. 1
Johnson, Martin	Sheldon
Klotz and Holman	Sheldon
Krosovich, Frank	Sheldon
Kuhn, Carl	Rio
Lakeview Farm	Beaver Dam, R. 3
Lloyd, E. B. and Son	Cambria
Lindeman, Elmer	Juneau, R. 3
Lois, Ray	Burlington
Mattison and Son, A.	Weyerhauser
Meekma, George	Randolph, R. 1
Mickelson, Bernie	Fall River, R. 1
Mielkee, Arthur	Arlington
Meyer, John A.	Cleveland, R. 1
Nagel, Raymond	Elkhart Lake, R. 1
Nelson, Chas. A.	Honey Creek
Nisbet, J. C., Secretary W. D. A.	Fort Atkinson
O'Brien, Thos.	Tiffany, Box 289
Ochs, Paul	Elkhart Lake, R. 1
Ochs, Walter	Cleveland
Oswald, Elmer	Cleveland, R. 1
Paulsen, Herman	Holcombe
Pautz, Oscar	Horicon, R. 1
Quasius, Henry	Sheboygan
Rake, Clem	Columbus, R. 5
Reineking, Paul	Plymouth, R. 3
Rex, Emil	Iron Ridge, R. 1
Rex, Harvey	Iron Ridge, R. 1
Rupnow, Frank	Juneau, R. 1
Russart, Frank	Sheboygan
Scheel, Arthur	Bruce
Siemers, Fred.	Cleveland, R. 1
Sixel, Henry	Cleveland, R. 1
Solberg, A. H.	Blair
Spring Brook Farm	Burnett, R. 1
Stevens, M. B.	Ft. Atkinson
Stuckman, H. A.	Plymouth, R. 3
Sunrise Stock Farm	Columbus, R. 3
Tenhagen, Wm.	Burlington
Thomson, A. C., Fieldman W. D. A.	Fort Atkinson
Vergeront, Glen W., President W. D. A.	Madison
Violet Farm	Randolph, R. 1
Wagner, Arthur L.	Cleveland, R. 1
Waterworth, J.	Columbus
Wegner, Walter	Elkhart Lake, R. 1
Wehrmann, Arno	Elkhart Lake, R. 1
Wehrmann, Herbert	Sheboygan
Wiemer, Wanti	Sheldon
Wilcox and Dahnert	Juneau, R. 3
Willow Creek Farm	Fox Lake, R. 2
Wipperman, Hubert	Cleveland
Witte Bros.	Cottage Grove
Wood, James	Marshall
Wunsch, Hugo E.	Sheboygan
Barron County Associations	78 members
Madsen-Valders Association	26 members
Outagamie Holstein Association	26 members

Wisconsin Cow Testing Associations

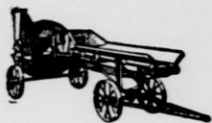
By Counties
March 12, 1936

County	County Agr. Agent	Address	No.
Barron	J. O. Hembre	Barron	10
Brown	J. N. Kavanaugh	Green Bay	1
Buffalo	John H. Zahorik	Alma	1
Calumet	(No agent)		1
Clark	W. J. Landry	Neilsville	1
Chippewa	Hans G. Horne	Chippewa Falls	1
Columbia	H. A. Hovde	Portage	1
Crawford	J. N. Price	Prairie du Chien	1
Dane	L. J. Merriam	P. O. Bldg., Madison	5
Dodge	J. E. Stallard	Juneau	2
Door	B. F. Rusy	Sturgeon Bay	1
Douglas	R. Osborne Ralph	Superior	1
Dunn	D. P. Hughes	Menomonie	5
Eau Claire	P. B. Eves	Eau Claire	1
Fond du Lac	S. P. Murat	Fond du Lac	4
Grant	Ben H. Walker	Lancaster	3
Green	Ray Pavlak	Monroe	3
Green Lake	A. D. Carew	Green Lake	1
Jackson	M. R. Shuler	Black River Falls	1
Jefferson	Frank H. Everson	Jefferson	3
Juneau	Manly Sharp	Mauston	3
Kenosha	E. V. Ryall	Kenosha	2
La Crosse	W. E. Spreiter	La Crosse	1
Lafayette	R. V. Hurley	Darlington	2
Manitowoc	H. J. Weavers	Manitowoc	4
Marinette	C. B. Drewry	Marinette	1
Milwaukee	R. B. Pallett	Wauwatosa	1
Monroe	W. B. Emerton	Sparta	1
Outagamie	R. C. Swanson	Appleton	4
Ozaukee	C. C. Gilman	Port Washington	1
Pierce	H. G. Seyforth	Ellsworth	3
Polk	A. O. Follett	Balsam Lake	3
Racine	E. A. Polley	Rochester	2
Richland	A. Vernon Miller	Richland Center	1
Rock	R. T. Glassco	Janesville	4
Rusk	C. O. Ebling	Ladysmith	2
Sauk	C. H. Karch	Baraboo	1
St. Croix	W. L. Vandervest	Baldwin	3
Shawano	G. F. Baumeister	Shawano	2
Sheboygan	G. W. Lycan	Sheboygan	2
Vernon	Orrin Johnson	Viroqua	1
Walworth	James Beattie	Elkhorn	3
Washburn	E. W. Woline	Spooner	1
Washington	E. D. Byrns	West Bend	3
Waukesha	J. F. Thomas	Waukesha	3
Waupaca	George Massey	Waupaca	1
Waushara	E. A. Jorgensen	Wautoma	1
Winnebago	O. P. Cuff	Oshkosh	3

Silage Cuts Milk Costs

CASE

Cuts Silage Costs



More capacity for the labor used and power required makes Case the low-cost silo filler. . . . See these great features—

Open Slat Steel Carrier really feeds itself — no man needed. Feeder drum assists and governs feeding.

Four-Blade, All-Steel Knife Wheel adds a third more capacity. Correct shearing angle, scientifically timed fan blades, and center-flow discharge pipe save power, gain capacity.

Does Other Cutting. Mix beans or other legumes with silage; chop hay into mow for feed; straw for easier, better bedding.

Full-Turn Front Truck makes setting easy; steel tongue out of the way during operation and storage.

Don't wait until rush season to look into profits of having your own modern silo filler—send now for full information. Better yet, see your Case dealer or drop in when near any Case branch or the Case factory.



J. I. CASE CO. Racine, Wis.