

Artscene. Vol. 4, No. 4 September/October 1988

Elvehjem Museum of Art

Madison, Wisconsin: Elvehjem Museum of Art, University of
Wisconsin-Madison, September/October 1988

<https://digital.library.wisc.edu/1711.dl/DO4A5JWWJBCOH8R>

<http://rightsstatements.org/vocab/InC/1.0/>

Copyright 1988 The Regents of the University of Wisconsin System

For information on re-use see:

<http://digital.library.wisc.edu/1711.dl/Copyright>

The libraries provide public access to a wide range of material, including online exhibits, digitized collections, archival finding aids, our catalog, online articles, and a growing range of materials in many media.

When possible, we provide rights information in catalog records, finding aids, and other metadata that accompanies collections or items. However, it is always the user's obligation to evaluate copyright and rights issues in light of their own use.

The Elvehjem Museum of Art artscene

University of
Wisconsin-Madison
Volume 4, Number 4

After almost ten years of research and more than two years of planning, *Frank Lloyd Wright and Madison: Eight Decades of Artistic and Social Interaction* opens on September 2 in Brittingham Galleries I, II, IV and VI. The exhibition testifies to the enduring relationship Wright had with the city and its citizens. Between 1893 and 1959 he produced thirty-two designs for buildings to be located in Madison and its environs. These commissions represent a variety of residential and institutional building types and illustrate every stylistic period in every decade of his professional life. Eleven of the thirty-two designs were built, but only eight stand today.

Over fifty original drawings, the majority on loan from the Frank Lloyd Wright Memorial Foundation, provide a focus for the exhibition. Concept drawings (preliminary sketches of Wright's architectural designs), presentation renderings intended to aid the client in visualizing the building, and working drawings and blue prints that provided detailed instructions for craftsmen and builders are included in this exhibition. Furniture, models, photographs and related historic materials complement the drawings.

The exhibition traces Wright's development from his youth in Madison to his emergence as an architect of international importance. It begins on the balcony outside of Gallery II with objects which record the decade of 1878 to 1887 when Wright attended grade school, studied at the University of Wisconsin and was employed by engineering professor Allan D. Conover.

Gallery II focuses on Wright's life from 1893 to 1910 when he lived in Chicago but returned to Madison frequently to oversee the progress of several commissions including the *Lake Mendota Boathouse* (1893), *Lamp House* (1903) and *Gilmore House* (1908).

The years from 1911 to 1930 are highlighted in Gallery I. During this period Wright established his permanent residence at Taliesin in Spring Green and designed Madison buildings using concrete as a building material in structures such as the *Madison Hotel* (1912), the *Kehl Dance Academy* (c. 1914), the *Phi Gamma Delta Fraternity House* (1923), and the *Nakoma Country Club* (1923).

Gallery IV covers variations on the "Usonian House" designed between 1931 and 1959. Characteristically, Usonian dwellings featured separate living and sleeping wings, linked by a central utility core that often contained the kitchen (or "workspace"). Commissions of the period include *Jacobs House I* (1936-37), *Pew House* (1938-40), and *Jacobs House II* (1943-49). During these years Wright also undertook several non-residential commissions. Among these were the *Fly Craft Studio* project (1933) and the *Unitarian Meeting*



Exterior view of *Unitarian Meeting House*, 1947-1951 (from the exhibition *Frank Lloyd Wright and Madison*). (Copyright © William Wollin.)

House (1947-51). The use of geometric ordering systems, or modules, appears throughout these later works. Thus, Wright generated the design of the *Unitarian Meeting House* from a triangle while the square is the fundamental unit of the *Pew House*.

The *Monona Terrace* projects (1938/1955) are featured in the final gallery, Gallery IV. Wright worked intermittently from 1938 to 1959 on this civic complex. *Monona Terrace I* (also known as *Olin Terraces*), submitted in 1938, provided a last-minute alternative to a previously approved city-county building. His proposed structure combined judicial, cultural, recreational, administrative and detention facilities with promenades, fountains, gardens, auto parking and a rail station. The project was redesigned in the early fifties to include only cultural facilities. *Monona Terrace II* was approved by Madison voters but was never built.

Continued on Page 3

INSIDE artscene

Exhibitions

Frank Lloyd Wright and Madison: Eight Decades of Artistic and Social Interaction, The House Beautiful: Frank Lloyd Wright for Everyone

Artworks of the Month

Hiroshige Color Woodblock Prints

Lectures

"Monona Terrace: A View from Taliesin,"
"The Frank Lloyd Wright I Knew,"
"Surviving a Wright House,"
"Restoring Jacobs House I"

Members' Trips

Madison's Wright Buildings
Gauguin

See calendar listings for tours, lectures, concerts and opening dates of exhibitions.

Hiroshige Color Woodblock Prints

In addition to the architectural legacy he left to Madison, Frank Lloyd Wright's influence helped found the fine collection of Japanese prints at the Elvehjem. Wright himself was among the early American collectors of these works; the first American show devoted to the work of Hiroshige was drawn from Wright's holdings and exhibited at the Art Institute of Chicago in 1907. In 1915 and 1916 he served as the purchasing agent in Japan for William Spaulding. There he spent, by his own account, "about one hundred and twenty-five thousand Spaulding dollars for about a million dollars' worth of prints." The Spaulding collection eventually went to the Boston Museum of Fine Arts; Wright's own Japanese prints, some of which were acquired during the same trip to Japan, came in part to the Elvehjem.

Wright used his Japanese print collection to raise money, and in 1927 he sold them through Anderson Galleries in New York who produced a catalogue of the collection with an introduction by Wright. About 4,000 of the prints were bought from a Madison bank by E.B. Van Vleck, a mathematics professor at the University of Wisconsin who had received his first Japanese print in 1899. Van Vleck continued to buy and sell prints until 1941. The collection passed to his son, John Hasbrouck Van Vleck, who bequeathed it to the Elvehjem in 1980. The Van Vleck collection still contains approximately 2,000 prints which had belonged to Wright.

When he wrote about Japanese prints, Wright saw them as being "pure aesthetic abstractions" which were valuable for Western artists because they do not present a scene with "that outward aspect which strikes the eye as a visual image of a scene strikes the ground glass of a camera, but that inner harmony which penetrates the outward form." He thought Japanese prints achieved this inner harmony by being "conventional patterns subtly geometrical, imbued at the same time with symbolic value, this symbolism honestly built on a mathematical basis." Regarding his own work, Wright stated in his autobiography that "the gospel of elimination preached by the print came home to me in architecture as it came home to the French painters who developed Cubisme." Wright's interest in this geometrization and elimination are especially prominent in his figures of Nakoma and Nakomis, which may be the fruit of his study of his collection.



Utagawa Hiroshige, *The Entrance Gate of Enoshima in Sagami Province*, 1858, color woodblock print, Gift of John Hasbrouck Van Vleck.

The Artworks of the Month to be displayed in September and October were chosen from those once owned by Wright because they seem particularly suggestive of the relationship between Wright's work and the tradition of Japanese printmaking. Both are by Hiroshige and both include architectural elements which have been situated so that the works of man achieve a delicate balance with the works of nature; however, the prints achieve this balance in very different ways.

Hōrai Temple in the Steep Mountains of Mikawa Province is from Hiroshige's series, *Pictures of Famous Places in the Sixty-odd Provinces*. It emulates the style of Chinese literati painting which often depicted an imaginary abode of contemplation. From a vantage point beside a stream, dwarfed by mountains, these ink and brush paintings invited the viewer to a place of quiet meditation far from mundane concerns, where he could reflect upon his relation to the overwhelming natural forces that surrounded him. Hiroshige's evocation of this tradition is particularly appropriate in the collection of an architect who was so often

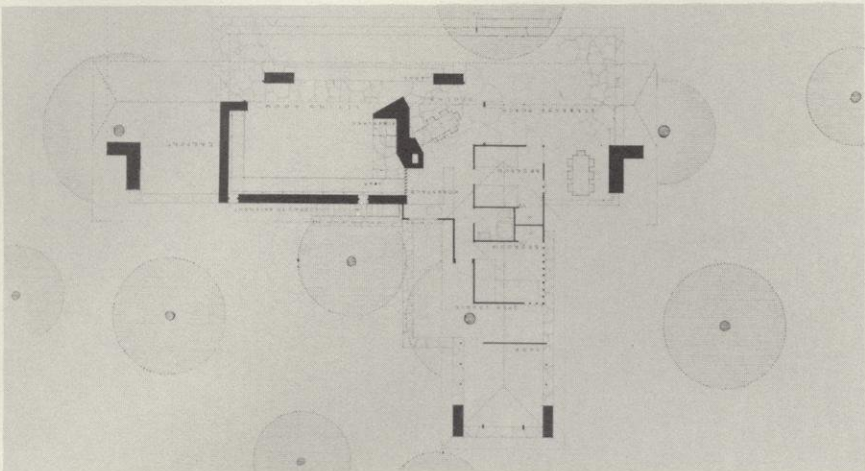
concerned with integrating buildings with nature.

The Entrance Gate at Enoshima in Sagami Province is from the series *Thirty-six Views of Mount Fuji*, and shows the sacred mountain viewed through the arch of a purifying Tori gate in front of the temple. Tori gates are often placed before Shinto temples to purify those who pass beneath them. They may also be situated in harbors to provide a blessing for boats and their occupants. Here, our point of view places Fuji beneath the gate, so that the mountain itself appears to be undergoing purification. Perhaps from Wright's perspective this is close to the literal truth; like our view of Fuji, the whole scene is purified by the artist's "elimination of the insignificant" which Wright saw as the "supreme principle of Japanese aesthetics." He was also interested in Hiroshige's use of "large objects crossing the view, between which you peer at the scene beyond, or just coming in or going out or passing beneath . . . stating a simple truth in landscape design which our Western schools have since profited by. Here Landscape becomes pattern."



Utagawa Hiroshige, *Hōrai Temple in the Steep Mountains of Mikawa Province*, 1853, color woodblock print, Gift of John Hasbrouck Van Vleck.

EXHIBITIONS



Frank Lloyd Wright, *Barton Cottage*, 1941, ink on paper. (Copyright © The Frank Lloyd Wright Foundation, 1982.)

Madison's geography assured Wright of challenging sites, and her citizenry provided him with a source of clients. While Madisonians alternately encouraged and spurned his artistic and social ideals, they commissioned buildings during every decade of his career resulting in designs that incorporate the full range of the architect's stylistic and technical innovations. In this sometimes inconsistent way, Madison nurtured the genius of Frank Lloyd Wright. A poster of *Monona Terrace*, 1955 is available for \$15 in the Museum Shop. A gallery guide has been published also.

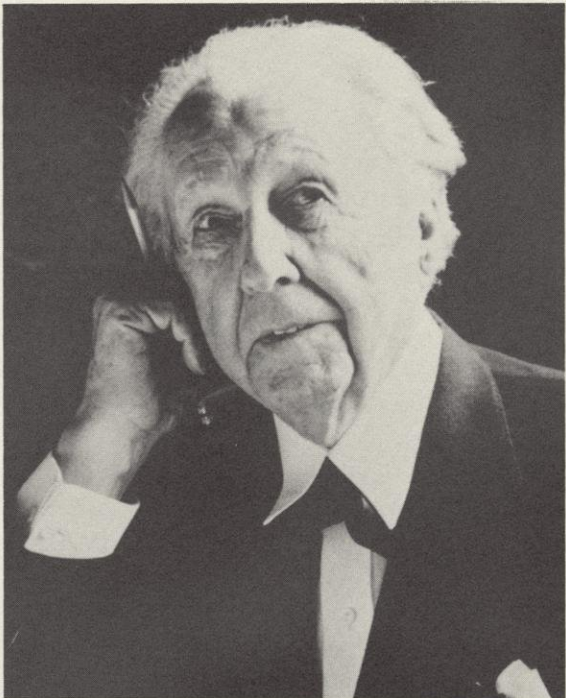
A second exhibition of Wright's work, *The House Beautiful: Frank Lloyd Wright for Everyone*, also opens on September 2 in the Mayer Gallery. This exhibition, curated by Professor Virginia Boyd of the UW-Madison Department of Environment, Textiles and Design, explores the methods Wright used to transmit his view of American architecture to audiences beyond the relatively small group of individuals who could afford to work with him. His goal was to create a natural, organic "house beautiful" for everyone.

Divided into three sections *The House Beautiful* examines how Wright communicated through publications, products and exhibitions. The exhibition displays photographs of Wright's designs published by *House Beautiful* in two special issues devoted entirely to his work. Heritage-Henredon furniture and Schumacher and Company fabrics and wallpapers as well as original drawings of Wright's furniture

designs illustrate how he communicated through merchandising products. The fact that Wright also conveyed his ideas through exhibitions is shown by the photographs of the Exhibition House of 1955 to demonstrate a unique American dwelling for the average income family. A gallery guide accompanies *The House Beautiful*.

The Whyte Gallery presents two smaller didactic exhibitions related to *Frank Lloyd Wright and Madison*. The first exhibition examines four Wright designs—the Unitarian Meeting House, Rentz House, Yahara River Boathouse and Sundt House—using computer-aided design techniques to emphasize various aspects of each design. The designs were entered into a computer by Bruce Kieffer, Assistant Professor in the UW-Madison Department of Environment, Textiles and Design, and his students. To produce the computer-generated drawings and three-dimensional representations of the designs, they used software developed as part of Project Trochos, a cooperative venture between the University of Wisconsin-Madison and IBM.

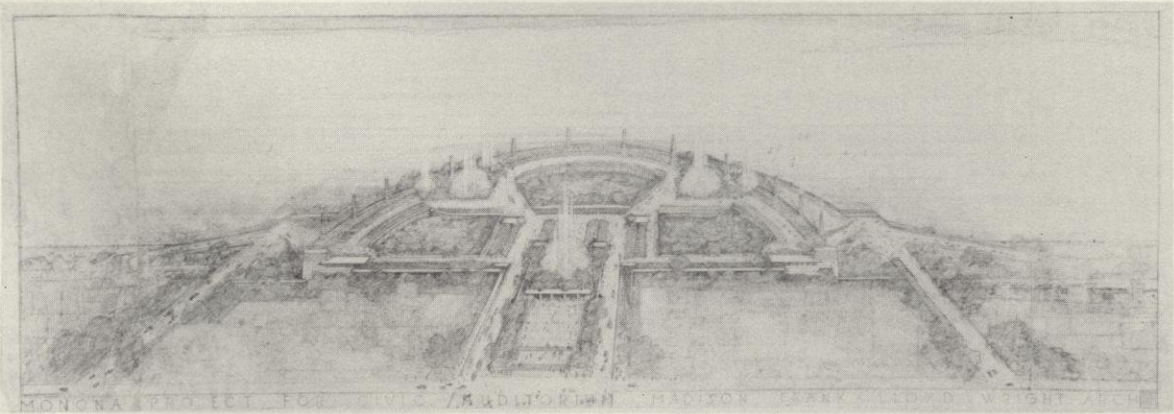
For the second Whyte Gallery exhibition Volunteer Braillists, Inc. have translated three existing Wright buildings into tactile floor plans, as an aid to people who are visually impaired. Jacobs House I, Jacobs House II, and the Unitarian Meeting House will be exhibited along with an explanatory text in large print, braille, and audio-cassette formats. Those who are visually impaired may arrange tours by calling 608/263-4421 at least three weeks in



Frank Lloyd Wright. (Courtesy of The Frank Lloyd Wright Foundation. All rights reserved.)

advance of the desired date.

The exhibitions were made possible through the generous support of the National Endowment for the Humanities, National Endowment for the Arts, Wisconsin Humanities Committee, Dane County Cultural Affairs Commission, Madison Festival of the Lakes/Famous Footwear, Marshall Erdman and Associates, Inc., Consortium for the Arts (UW-Madison), The Evjue Foundation, Inc./The Capital Times and Anonymous Fund Committee (UW-Madison).



Frank Lloyd Wright, *Olin Terraces* (also known as *Monona Terrace I*), 1938, graphite and color pencils on paper. (Copyright © The Frank Lloyd Wright Foundation, 1988.)



Frank Lloyd Wright for the Heritage-Henredon Furniture Co., *Armchair*, 1955, mahogany, (from the exhibition *The House Beautiful: Frank Lloyd Wright for Everyone*). (Courtesy of Marie Kolberg.)

The Elvehjem

EXHIBITIONS

Wright Documentary Produced with WHA-Television

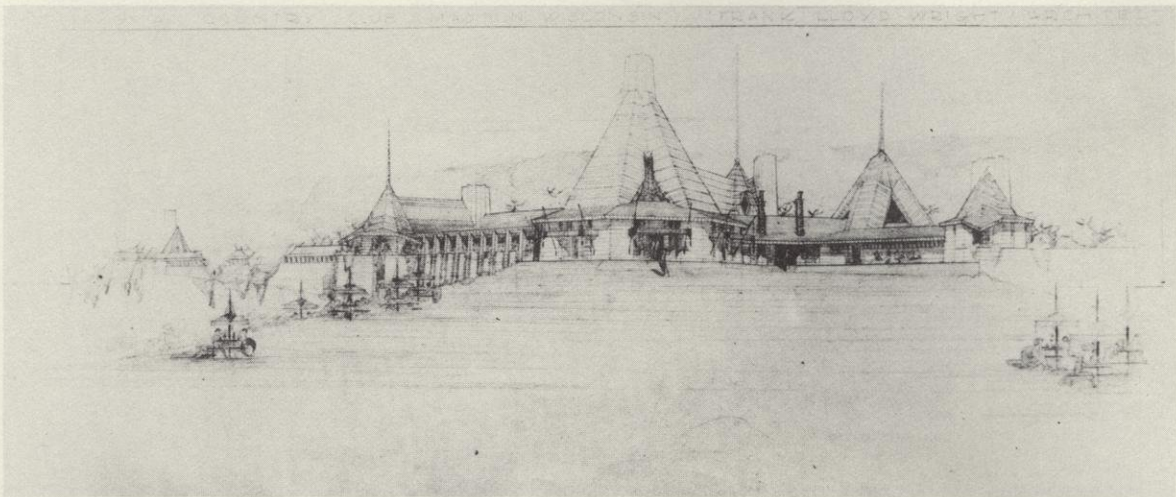
"Frank Lloyd Wright and Madison: A Documentary," a half-hour film exploring Wright's life through interviews, original drawings, shots of his buildings and other objects in the exhibition, highlights the creative life of a major American architect and his relationship with Madison and its environs. Co-produced by the Elvehjem and WHA-TV, the documentary presents an intimate portrait of the man and highlights his creative life within the evolving architectural climate of the community with which he had a love-hate relationship. Its premier takes place on Thursday, September 15 at 7:00 p.m., and it will be broadcast on statewide public television on September 17. (See calendar for additional show times.)

Frank Lloyd Wright Exhibitions Opening Celebration

Chancellor Donna Shalala will formally open *Frank Lloyd Wright and Madison: Eight Decades of Artistic and Social Interaction* and *The House Beautiful: Frank Lloyd Wright for Everyone* at a reception Friday, September 2 from 6-9 p.m. Elvehjem Members, special guests and the general public are cordially invited to attend this event to mark the beginning of these exhibitions. The reception will feature a selection from Taliesin's own recipes and an ice sculpture of Wright's *Nakomis*. Guests are requested to RSVP by August 25.



Frank Lloyd Wright, *Nakoma and Nakomis*, terra cotta with platinum glaze, 1927-29, Elvehjem Associates Fund Purchase.



Nakoma Country Club, 1923, ink on paper. (Courtesy of The Frank Lloyd Wright Foundation and Whitford L. Huff.)



Interior of *Lamp I*, designed by Frank Lloyd Wright in 1903.

Joe Paskus

Hollywood Glamour Poster Wins Second Award

The American Association of Museums awarded the *Hollywood Glamour* poster an Award of Merit in their 1988 Museum Publications Competition. Designed by Earl J. Madden of University Publications, the winning poster was on display at the AAM's annual meeting in Pittsburgh in June and will be featured in a traveling exhibition organized by the Cedar Rapids Museum of Art.

Dimitri Prigov to Speak

The Elvehjem will welcome Soviet artist and poet Dimitri Prigov to Madison to discuss his recent work on Wednesday, November 16 at 7:30 p.m. Prigov's *Bestiale Series*, 1-30, a detailed work composed of thirty separate pen-and-ink drawings was acquired by the museum in 1987 and has been featured as an Artwork of the Month. (This work is displayed on the 5th floor.) Prigov's visit has been made possible through cooperation with Ohio Wesleyan University, the sponsor of his visit to the United States.

The Elvehjem

September

2 Friday

Preview Reception, *Frank Lloyd Wright and Madison* and *The House Beautiful*, 6:00 p.m. until 9:00 p.m.

Exhibition, *Frank Lloyd Wright and Madison: Eight Decades of Artistic and Social Interaction*, opens in Galleries I, II, IV & VI, and runs through November 6.

Exhibition, *The House Beautiful: Frank Lloyd Wright for Everyone*, opens in Mayer Gallery and runs through November 6.

5 Monday

Holiday, Museum is open from 9 a.m.-4:45 p.m.

8 Thursday

Evening Public Hours, for duration of *Frank Lloyd Wright and Madison*, 4:45-9 p.m.

Lecture, "Frank Lloyd Wright Architecture: To Build and to Live In," Katherine Jacobs, Client, Jacobs Houses I and II, Room 140, 7:30 p.m. (608-263-4421)

10 Saturday

Conference, Wisconsin Department of Public Instruction, "Teaching Architecture in Schools," Room 130, 9 a.m.-3:30 p.m. Pre-registration is required. (608-267-7461)

11 Sunday

Concert, Sunday Afternoon Live from the Elvehjem, Taliesin Fellowship Musicians, Gallery V, 1:30 p.m.

Lecture, "Wright's Revolution in Modern Art: Breaking the Square, the Triangle, and the Circle," Kathryn A. Smith, Lecturer in Architectural History, Southern California Institute of Architecture, Room 160, 3:30 p.m. (608-263-4421)

15 Thursday

Lecture, "Monona Terrace: A View From Taliesin," E. Thomas Casey, Director of Education, Frank Lloyd Wright School of Architecture, Room 140, 7:30 p.m. (608-263-4421)

FRANK LLOYD WRIGHT HOTLINE

For up-to-date information on Frank Lloyd Wright exhibitions, lectures, films and other activities throughout Madison, phone 608/263-0359 (263-0FLW) for a recorded message sponsored by Madison Magazine, Inc.

Premier, "Frank Lloyd Wright and Madison: A Documentary," Room 130, 7:00 p.m. The thirty-minute video will be shown during the Wright exhibitions on Thursdays at 7:00 p.m., Saturdays at 2:00 p.m. and Sundays at 12:00 noon. (608-263-4421)

17 Saturday

Conference, Wisconsin Department of Public Instruction, "Teaching Architecture in Schools," Room 130, 9 a.m.-3:30 p.m. Pre-registration is required. (608-267-7461)

18 Sunday

Concert, Sunday Afternoon Live from the Elvehjem, The Chicago Guitar Trio, Gallery V, 1:30 p.m.

Lecture, "Frank Lloyd Wright's Vision for the Middle Class House," Clifford E. Clark, Jr., Professor of History, Carleton College, Room 160, 3:30 p.m. (608-263-4421)

22 Thursday

Lecture, "From the Ground Up—From the Roof Down: Restoring Jacobs House I," James M. Dennis, Professor of Art History, UW-Madison, Room 140, 7:30 p.m. (608-263-4421)

24 Saturday

Tour, "Wright Buildings in Madison," 8:00 a.m.-2:00 p.m. Guided tour for Elvehjem members only. (608-263-2495)

25 Sunday

Concert, Sunday Afternoon Live from the Elvehjem, Orpheus Vocal Ensemble, Gallery V, 1:30 p.m.

Lecture, "When a Museum is a Masterpiece: Wright's Guggenheim Museum, Past and Future," Thomas M. Messer, Director Emeritus, Guggenheim Museum, Room 160, 3:30 p.m. (608-263-4421)

30 Friday

Lecture, "The Frank Lloyd Wright I Knew," Edgar Tafel, Architect and Apprentice of the Taliesin Fellowship, Room 160, 7:30 p.m. (608-263-4421)

October

2 Sunday

Concert, Sunday Afternoon Live from the Elvehjem, Victoria Drake, harp, Gallery V, 1:30 p.m.

9 Sunday

Concert, Sunday Afternoon Live from the Elvehjem, David Cowley, cello, Gallery V, 1:30 p.m.

11 Tuesday

Lecture, "My Recent Work," Dimitri Prigov, Artist, Room 140, 7:30 p.m. (608-263-4421)

16 Sunday

Concert, Sunday Afternoon Live from the Elvehjem, Greive-Karp Trio, Gallery V, 1:30 p.m.

Lecture, "A Nice Place to Visit: Surviving a Wright House," Kristine O. Garrigan, Room 140, 3:30 p.m. (608-263-4421)

17 Monday

Trip, "The Art of Paul Gauguin," Art Institute of Chicago, 8:00 a.m. (608-263-2495)

18 Tuesday

Lecture, "An Informal Discussion," Albin Brunovsky, Artist, Mayer Print Room, 10:30 a.m. Registration is required. (608-263-2495)

23 Sunday

Concert, Sunday Afternoon Live from the Elvehjem, The Music Fix, Gallery V, 1:30 p.m.

27 Thursday

Lecture, "Dr. and Mrs. Jackson Built A House: Mrs. Jackson Got Her House, Dr. Jackson Got His Garage," Paul E. Sprague, Professor of Art History, UW-Milwaukee, Room 140, 7:30 p.m. (608-263-4421)

30 Sunday

Concert, Sunday Afternoon Live from the Elvehjem, Pro Arte Quartet, Gallery V, 1:30 p.m.

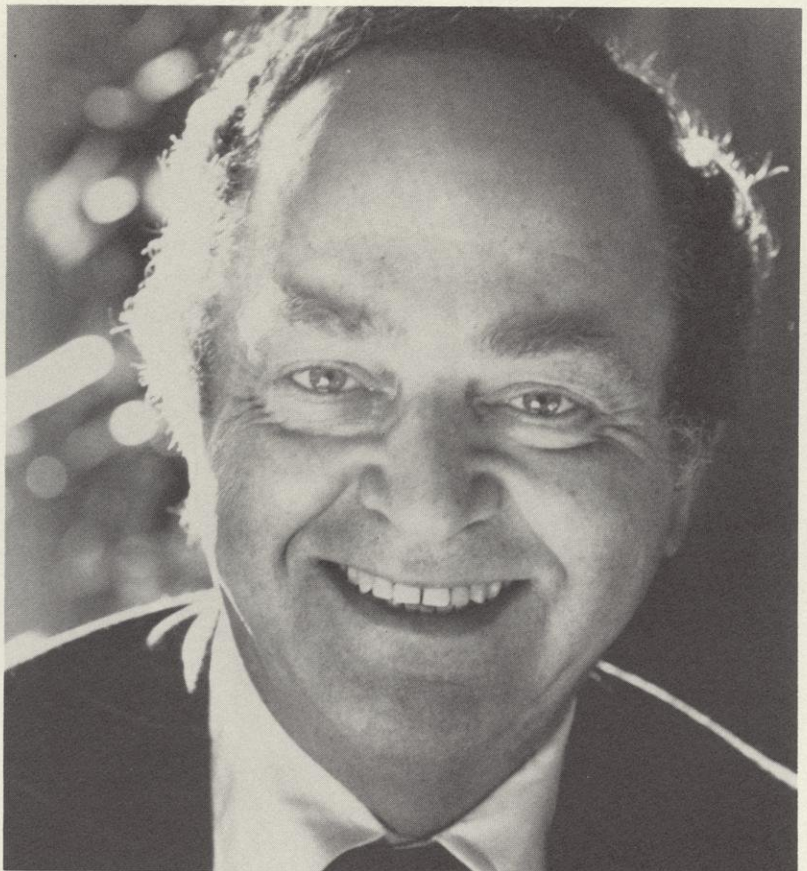
Tours

Every Sunday at 3:00 p.m. Docents will give ten-minute talks on the Artwork of the Month.

Every Wednesday from 11:00 a.m.-2:00 p.m. a member of the Volunteer Braillists, Inc. will be present in the Whyte Gallery to aid visitors with the exhibition of tactile floor plans.

Every Thursday Docents will lead drop-in tours on the collections and exhibitions. The tours begin at 11 a.m. in the Paige Court.

A calendar of Frank Lloyd Wright events organized by the Elvehjem and other Madison organizations is available at the Information Desk.



Edgar Tafel, an apprentice of Frank Lloyd Wright and architect.

The Elvehjem

EDUCATION

Frank Lloyd Wright and Madison is the subject of numerous educational programs for the general public and the schools. A detailed listing of Elvehjem activities is included in the daily events listing in this *Artscene*. A dozen public lectures will examine Wright as an influential visual thinker and social reformer, but also will sample the opinions of his co-workers and those who have lived and worked in his Madison buildings. Lecturing will be scholars Clifford Clark, Narciso Menocal, Kathryn Smith, and Paul Sprague; Wright's clients and tenants James Dennis, Kristine Ottesen Garrigan, Katherine Jacobs, and Guggenheim Museum Director Emeritus Thomas Messer; and architectural associates Thomas Casey and Edgar Tafel. The lecture by Thomas Messer is a gift in memory of Katherine Harper Mead. Edgar Tafel's lecture is presented under the auspices of the Wisconsin Society of Architects.

Because the museum's hours have been extended until 9:00 p.m. on Thursdays during *Frank Lloyd Wright and Madison*, weeknight lectures have been scheduled Thursdays at 7:30 p.m. Participants are encouraged to view the exhibitions prior to attending the lectures.

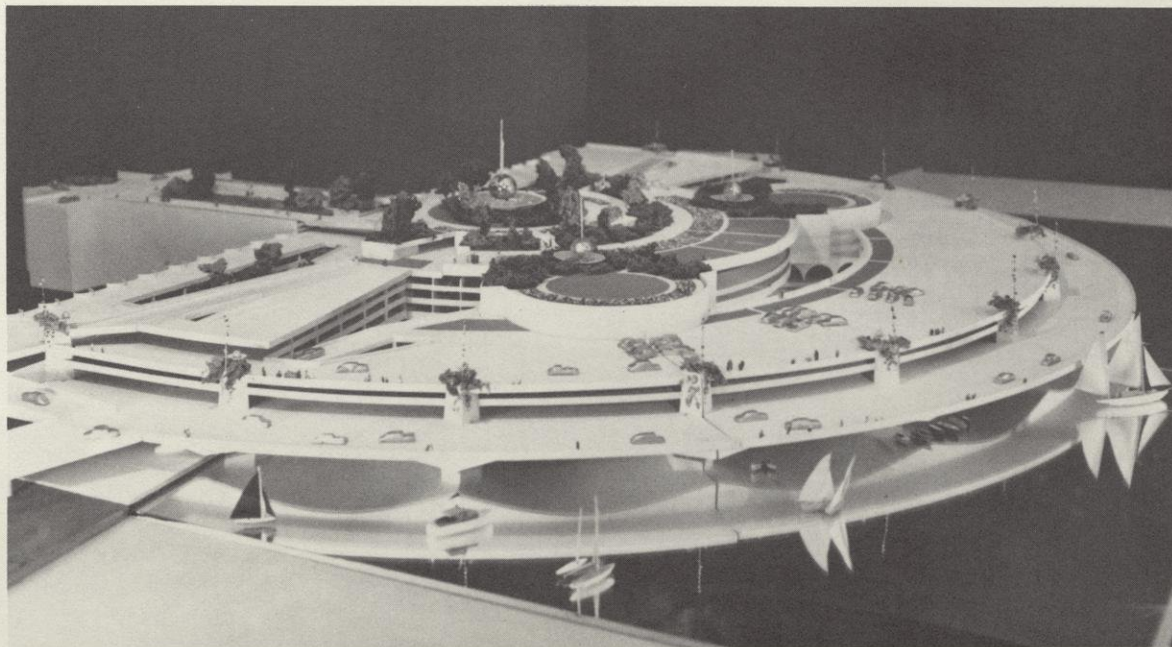
A Docent will be available to present a short tour (one-half hour) to drop-in visitors to *Frank Lloyd Wright and Madison* and *House Beautiful* on Wednesdays and Fridays at 12:00 noon and Sundays at 2:30 p.m. The offerings begin September 9 in Paige Court.

Group guided tours of *Frank Lloyd Wright and Madison* and *The House Beautiful* will be available by appointment. Guided tours for children's groups (grades k-12) will be scheduled weekday mornings beginning September 12. A slide packet, written by art history student Molly Bentley, to prepare students for the tour will be available to teachers upon request. Teachers may want to arrange to visit the Madison Children's Museum exhibition *To Build a House* in conjunction with an Elvehjem field trip.

For more information on guided tours for groups (including people who are visually or hearing impaired) or to make an

appointment, please call at least three weeks in advance of your proposed date, 608-263-4421. For information about visits to the Madison Children's Museum, please call 608-256-6445 (closed Mondays).

"Teaching Architecture in Schools" will be the subject of a statewide conference sponsored by the Wisconsin Department of Public Instruction at the Elvehjem on September 10 and 17. The program will consist of tours, presentations, and discussions of successful approaches to architectural education in elementary and secondary schools. Pre-registration is required. Inquiries should be made to Martin Rayala, State Art Consultant at 608-267-7461.



Scale model of the 1955 version of *Monona Terrace* designed by Frank Lloyd Wright. (Courtesy of The Frank Lloyd Wright Foundation. All rights reserved.)

Members Trip to Gauguin Exhibition at Art Institute

The Membership department will be hosting a trip to the *Art of Paul Gauguin* exhibition at The Art Institute of Chicago on Monday, October 17, 1988. The exhibition, sponsored by the National Gallery of Art, Musée d'Orsay and The Art Institute of Chicago, is a vibrant retrospective of Gauguin's exotic works. It will include over 230 of his greatest masterpieces from collections around the world, representing his finest paintings, sculptures, ceramics, prints and drawings. The exhibition is the first retrospective since 1906 to cover the entire scope of the artist's nomadic life and encompass such a wide range of works. The exhibition is open September 17-December 11, 1988.

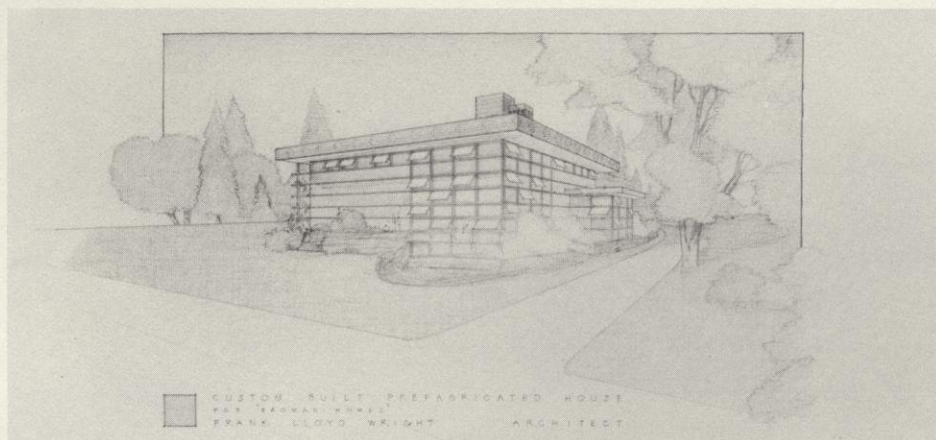
The itinerary will include lunch at the Garden Level Dining Room at The Art Institute, a slide lecture, and a group audio tour of the exhibition. Members will be receiving a fall tour brochure with further information. If you have questions regarding the trip, please contact the Membership and Development office at 263-2495.

Frank Lloyd Wright Madison Tour

Join us on Saturday, September 24 when Elvehjem Members tour Wright-designed homes and buildings in Madison. The guided tours will include interior tours of the First Unitarian Meeting House, Jacobs House I, and the Erdman Prefab II and the exteriors of the Pew House and the Erdman Prefab I. Only Members of the Elvehjem are eligible for participation in the tour. Members may purchase tickets

by mail order or at the Elvehjem Museum Shop.

The tour will begin at the First Unitarian Meeting House, 900 University Bay Drive and continue by motor coach. Participants should allow about three hours for the tour and wear comfortable shoes. Tours begin every hour and start at 8:00 a.m. Registration is on a first-come, first-served basis. Seats are limited, so please register early. Members of the Elvehjem will be receiving more information about tours to be offered this fall.



Frank Lloyd Wright, *Erdman Prefab II*, 1957, graphite and color pencils on paper. (Copyright © The Frank Lloyd Wright Foundation, 1988.)

The Elvehjem

MEMBERSHIP

League News

The Elvehjem Museum is pleased to welcome the new League president, Elizabeth Pringle, who has been an active member of the League serving as secretary, and Vice President. She received a degree in journalism from South Dakota State University where she worked as the editor for Ag Extension after she graduated. When Elizabeth and her husband moved to Madison, she became the Department secretary for the Political Science Department at the UW.

Since her retirement she has been very devoted to the Elvehjem and her other interests in opera and music. "But," she says, "I particularly appreciate the beauty of the Elvehjem. I have always been happy to have the time to be involved in the Elvehjem. The League has an excellent group of women, who are very helpful to the Elvehjem."

Elizabeth is joined by Beverly Calhoun, Secretary, and Zora Dunn, Treasurer in leading the League into a year of many important and exciting activities at the Elvehjem. For more information on becoming a League volunteer, please contact the Office of Membership and Development at 263-2495.

Bulletin/Annual Report 1986-87

If you were a member of the Elvehjem from July 1986 to June 1987, you may pick up your copy of the FY87 Bulletin/Annual Report in the Museum Shop through the end of September. After that date, they will be available in the Membership Office.

Sunday Afternoon Live Expands to Statewide Broadcast

The 9th season of the Elvehjem's popular concert series *Sunday Afternoon Live from the Elvehjem* will be broadcast statewide for the first time in several years. This year the performances in Gallery V at 1:30 p.m. will be broadcast one week later at noon over the entire Wisconsin Public Radio network.

The opening concert will feature the Taliesin Fellowship Musicians on Sunday, September 11 in conjunction with the Elvehjem's Frank Lloyd Wright exhibitions. The season runs every Sunday except holidays through May 21. Wisconsin Public Radio and the Elvehjem Museum of Art co-sponsor the free concert series which features artists from around the state of Wisconsin and surrounding regions.

The concert is the beginning of a full afternoon at the Elvehjem. It continues

with a tea and reception hosted by the Elvehjem League, after which Docents and guest speakers discuss works of art and exhibitions on view.

Czechoslovakian Artist to Speak to Elvehjem Members

Elvehjem members are invited to meet one of Czechoslovakia's most popular artists, Albin Brunovsky, when he speaks informally at 10:30 a.m. on Tuesday, October 18 in the Mayer Print Room. Brunovsky's imaginative work appeared this past June and July when *In Praise of Troubled Dreams: Prints and Paintings of Albin Brunovsky* was on view at the Elvehjem. Brunovsky teaches at the University of Creative Arts in Bratislava and recently was awarded the title "National Artist." This program is open to Members and students only. Seating is limited so please call 263-3686 to register.



"Sunday Afternoon Live from the Elvehjem" Concert in Brittingham Gallery V.

JOIN THE ELVEHJEM

Membership enables you to become an integral and essential part of the Elvehjem.

Annual Benefits include:

- Invitations to openings, receptions and special events
- A subscription to *Artscene* for advance notice of exhibitions, education and membership programs, and special events
- 15% discount on Museum Shop purchases
- Discounts on trips to major exhibitions at nearby museum and galleries
- The Bulletin/Annual Report

Members in categories above Family receive additional benefits such as complimentary Museum publications.

As a Member you support:

- Acquisitions
- Exhibitions
- Publications
- Educational Programs
- Special Events and Programs

Yes, I want to become a Member of the Elvehjem Museum of Art.
(If you are already a Member, please pass this form on to someone you know who would like to join the Elvehjem.)

Name _____

Address _____

City/State/Zip _____

Home Phone/Business Phone _____

☐ Please find my check enclosed for \$ _____

☐ Charge my: ☐ Visa ☐ MasterCard

Card # _____

Expiration Date _____

Signature _____

☐ Please contact me about becoming and Elvehjem volunteer.

Thank You for Your Support!

Membership Categories

- ☐ Fellow \$1,000
- ☐ Associate \$250
- ☐ Founder \$100
- ☐ Family \$40
- ☐ Individual \$25

My additional gift for programming is \$ _____

Please return this form with your check payable to the:
Elvehjem Museum of Art
Membership Office
800 University Avenue
Madison, WI 53706

The Elvehjem

Staff Notes

Drew Stevens has accepted an appointment to the newly established position of Associate Academic Curator of Prints and Drawings. Mr. Stevens received a B.A. and M.A. in English from Iowa State University in 1978 and 1980, and an M.A. in Art History from the University of Kansas in 1988.

For the past three years he has worked at the Spencer Museum of Art at the University of Kansas where he originally worked in the publication office. Subsequently he was awarded two curatorial assistantships, first working with the Curator of Photography, then with the Curator of Prints. At the Spencer he worked on such diverse shows as *Japanese Ghosts and Demons*, *Ansel Adams: 1938-1978*, *Airbrush and Ideology: The Esquire Woman*, and *The Engravings of the German Little Masters*.

Mr. Stevens is pleased to be at a university museum which serves a broad audience including community, faculty and students. He is particularly excited by the relationship of the Elvehjem with the Tandem Press: "As the archive for a commercial press which has consistently good artists coming into it, the Elvehjem is in the enviable position of being the first recipient of major new works. It is the sort of cooperative venture that makes university museums very attractive to me."

He sees many possibilities for print exhibitions using the Elvehjem's collection, which will let the public see the range of



Andrew Stevens, Curator of prints and drawings.

material kept here. "It's like inheriting a treasure; I can't wait to show it off."

As the Museum welcomes a new member of its staff it also regrets to announce the departure of Stephen C. McGough

who served as the Elvehjem's Assistant Director from 1981 until he was appointed Associate Director in 1984. On July 1, he became director of the University of Oregon Museum of Art.

Elvehjem Museum of Art
800 University Avenue
Madison, Wisconsin 53706



Gallery Hours:

Monday-Wednesday 9 a.m.-4:45 p.m.

Thursday 9 a.m.-9 p.m.

Friday-Saturday 9 a.m.-4:45 p.m.

Sunday 11 a.m.-4:45 p.m.

Museum Shop Hours:

Monday-Saturday 9 a.m.-4:45 p.m.

Sunday 11 a.m.-4:45 p.m.

Kohler Art Library Hours:

Monday-Thursday 8 a.m.-9:45 p.m.

Friday 8 a.m.-4:45 p.m.

Saturday-Sunday 1-4:45 p.m.

For library hours during UW-Madison holiday periods call (608) 263-2258

Information: (608) 263-2246

Admission is free

artscene
September/October 1988

Important Dated Information!



Nonprofit Org.
U.S. Postage
PAID
Madison, WI.
Permit No. 658

FALL 1988

ELVEHJEM MUSEUM OF ART



Frank Lloyd Wright, "Tree of Life" Window (from the Darwin D. Martin House, Buffalo, New York), 1904, stained and clear glass, Alva Gudsos Fund purchase, 1982.7

LECTURES

Katherine Jacobs

Client Jacobs Houses I and II
"Frank Lloyd Wright Architecture:
To Build and to Live in"
Thursday, September 8
7:30 p.m., Room 140

Kathryn A. Smith

Lecturer in Architectural History
Southern California Institute of Architecture
and Chairman, R.M. Schindler Centennial
Committee
"Wright's Revolution in Modern Art: Breaking the
Square, the Triangle, and the Circle"
Sunday, September 11
3:30 p.m., Room 160

E. Thomas Casey

Director of Education
Frank Lloyd Wright School of Architecture
"Monona Terrace: A View from Taliesin"
Thursday, September 15
7:30 p.m., Room 140

Clifford E. Clark, Jr.

Professor of History, Carleton College
"Frank Lloyd Wright's Vision for the Middle
Class House"
Sunday, September 18
3:30 p.m., Room 160

James M. Dennis

Professor of Art History
University of Wisconsin-Madison and
Owner Jacobs House I
"From the Ground Up-From the Roof Down:
Restoring Jacobs House I"
Thursday, September 22
7:30 p.m., Room 140

CONCERTS

Sundays at 1:30 p.m. in Gallery V

September 11
Taliesin Fellowship Group
September 18
Chicago Guitar Trio (John Hill, Paul
Henry, and Keith Michaels)
September 25
Orpheus Vocal Ensemble
October 2
Victoria Drake, harp
October 9
David Cowley, cello, Oshkosh
October 16
Greive-Karp Trio, Madison
October 23
The Music Fix, Madison
October 30
Pro Arte Quartet, Madison
November 6
Martha Francis Blum, violin, and Frances
Karp, piano, Madison
November 13
Lawrence University Brass Trio, and
Theodore Rehl, piano, Appleton
November 20
Dan Newman, tenor, and Don Patterson,
piano, Eau Claire
November 27
Ruth Serrao, piano, and Rojerio Rossini,
guitar, Milwaukee
December 4
Pro Arte Quartet, Madison

EXHIBITIONS

Frank Lloyd Wright and Madison: Eight Decades of Artistic and Social Interaction September 2-November 6

Few American cities have as many realized buildings by Frank Lloyd Wright as does Madison and its environs; none can boast proposed designs from the architect's first year of independent practice in 1893, from the year of his death in 1959, and from every decade in between. This exhibition contains more than two hundred objects including over fifty original drawings, furniture, scale models, photographs and related artifacts. Galleries I, II, IV, VI.

The House Beautiful: Frank Lloyd Wright for Everyone September 2-November 6

Through presentation of textiles, wallpapers, furniture and decorative objects Wright designed for commercial production, along with drawings, photographs and related materials, the exhibition demonstrates the avenues Wright used to extend the potentialities of architecture and design to larger audiences. Mayer Gallery.

P. H. Polk: Southern Photographer November 19-January 8, 1989

The photographs of Prentice Hall Polk are documents telling of the life at Tuskegee Institute, of debutantes, of music clubs, of Tuskegee colleagues such as George Washington Carver, and of sharecroppers near the Institute. The exhibition presents seventy-five black-and-white photographs taken from 1928 to 1969. Mayer Gallery.

Warrington Colescott: Forty Years of Printmaking November 26-January 15, 1989

Though he has spent most of his working life in Wisconsin, Warrington Colescott is known internationally for his innovative, satiric prints. This retrospective exhibition traces the development of his figurative and witty narrative styles with over one hundred examples of serigraphy, lithography and intaglio. Gallery IV.

Printing of this poster was made possible by a
donation from The Evjue Foundation, Incorporated.

Thomas M. Messer

Director Emeritus
Solomon R. Guggenheim Museum
"When a Museum is a Masterpiece: Wright's
Guggenheim Museum, Past and Future"
Sunday, September 25
3:30 p.m., Room 160
In memory of Katherine Harper Mead

Edgar Tafel

Architect and Apprentice of the
Taliesin Fellowship, 1932-41
"The Frank Lloyd Wright I Knew"
Friday, September 30
7:30 p.m., Room 160
(Seating is limited to 289 people)
Co-sponsored by the Wisconsin Society of
Architects

Dimitri Prigov

Artist
"My Recent Work"
Tuesday, October 11
7:30 p.m., Room 140

Kristine Ottesen Garrigan

Associate Professor of English, DePaul
University
"A Nice Place to Visit: Surviving a Wright House"
Sunday, October 16
3:30 p.m., Room 140

Paul E. Sprague

Professor of Art History
University of Wisconsin-Milwaukee
"Dr. and Mrs. Jackson Built a House:
Mrs. Jackson Got Her House-Dr. Jackson
Got His Garage"
Thursday, October 27
7:30 p.m., Room 140

Narciso Menocal

Professor of Art History
University of Wisconsin-Madison
"Taliesin, the Gilmore House, and the
'Flower in the Crannied Wall' "
Thursday, November 3
7:30 p.m., Room 140

Richard Cox

Professor of Art History
Louisiana State University
"Warrington Colescott: Forty Years of Printmaking"
Sunday, December 4
3:30 p.m., Room 140

December 11
Wisconsin Brass Quintet, Madison
December 18
Pippa Borisy, piano, Madison
January 8
Dolce Trio, Eau Claire



Frank Lloyd Wright, *Nakoma and Nakomis*, ca. 1929-30, terracotta with platinum glaze, Elvehjem Associates Fund purchase, 1976.141-142

For more information call 608-263-2246
Elvehjem Museum of Art
800 University Avenue
Madison, WI 53706