



# LIBRARIES

UNIVERSITY OF WISCONSIN-MADISON

## **Students' hand-book : presented by the Young Men's Christian Association and the Young Woman's Christian Association of the University of Wisconsin, year of 1900-1901. 1900**

[Madison, Wisconsin]: [The Young Men's Christian Association and  
The Young Women's Christian Association], 1900

<https://digital.library.wisc.edu/1711.dl/2SI5TQUUASCFO83>

<http://rightsstatements.org/vocab/NKC/1.0/>

For information on re-use, see

<http://digital.library.wisc.edu/1711.dl/Copyright>

The libraries provide public access to a wide range of material, including online exhibits, digitized collections, archival finding aids, our catalog, online articles, and a growing range of materials in many media.

When possible, we provide rights information in catalog records, finding aids, and other metadata that accompanies collections or items. However, it is always the user's obligation to evaluate copyright and rights issues in light of their own use.

UNIVERSITY  
OF  
WISCONSIN.

# THE HUB

RECOGNIZED BY

**STUDENTS**

AS THE MOST SUCCESSFUL

**CATERERS**

TO THEIR WANTS IN

**CLOTHING,**

FINE FURNISHINGS,

GYMNASIUM GOODS,

NOBBY SHOES,  
LIBRARY OF THE

UNIVERSITY OF WISCONSIN

**NORTHWESTERN  
BUSINESS COLLEGE**  
AND SCHOOL OF  
**SHORTHAND**  
ILLUSTRATED CATALOGUE FREE  
MADISON, WISCONSIN.

Centrally Located

Opposite Park Hotel

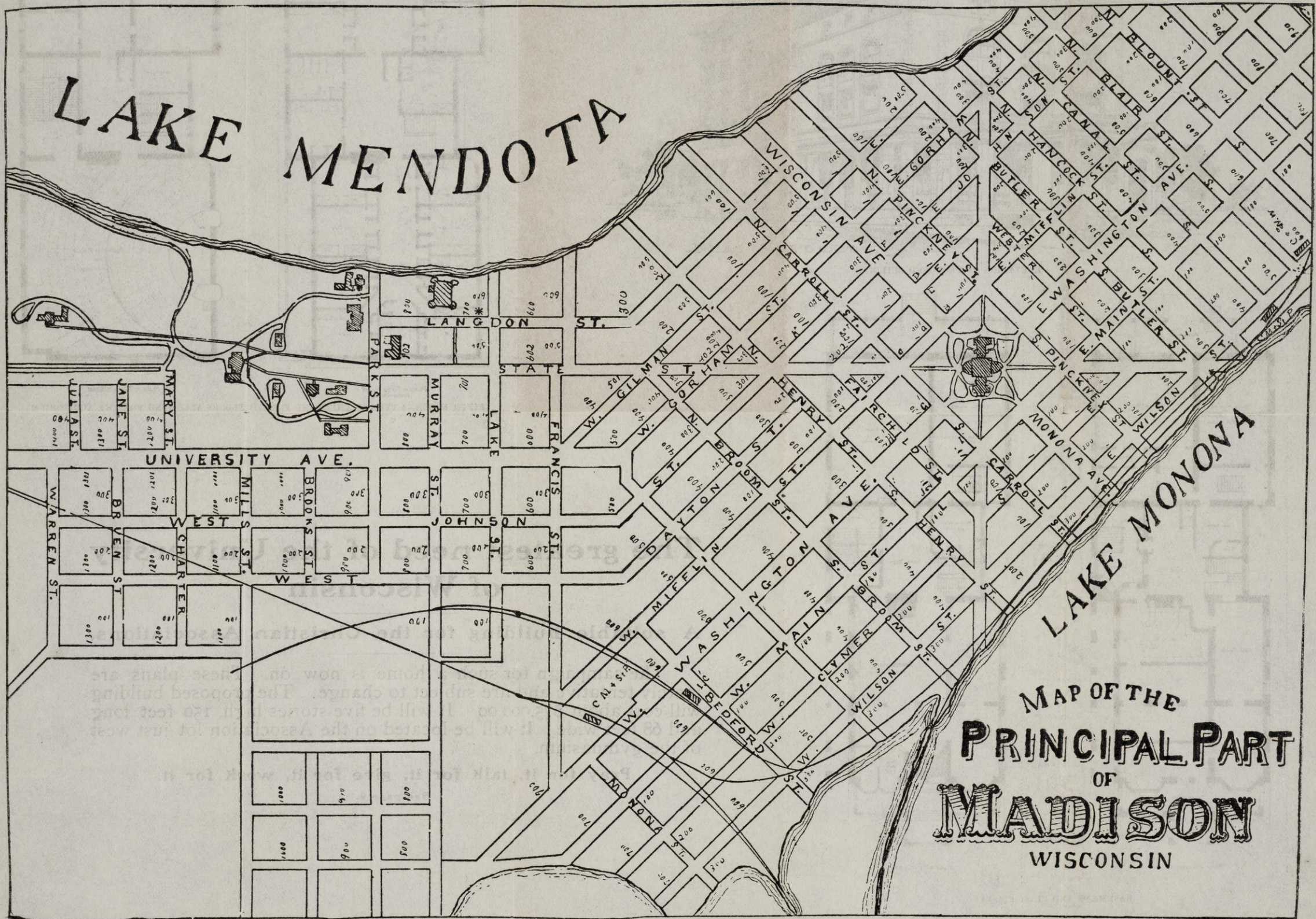
Thorough Courses

Excellent Facilities and

Well Qualified Teachers.

THE PARLORS OF THE Y. M. C. A. HOUSE ARE OPEN TO ALL MEN OF THE UNIVERSITY.

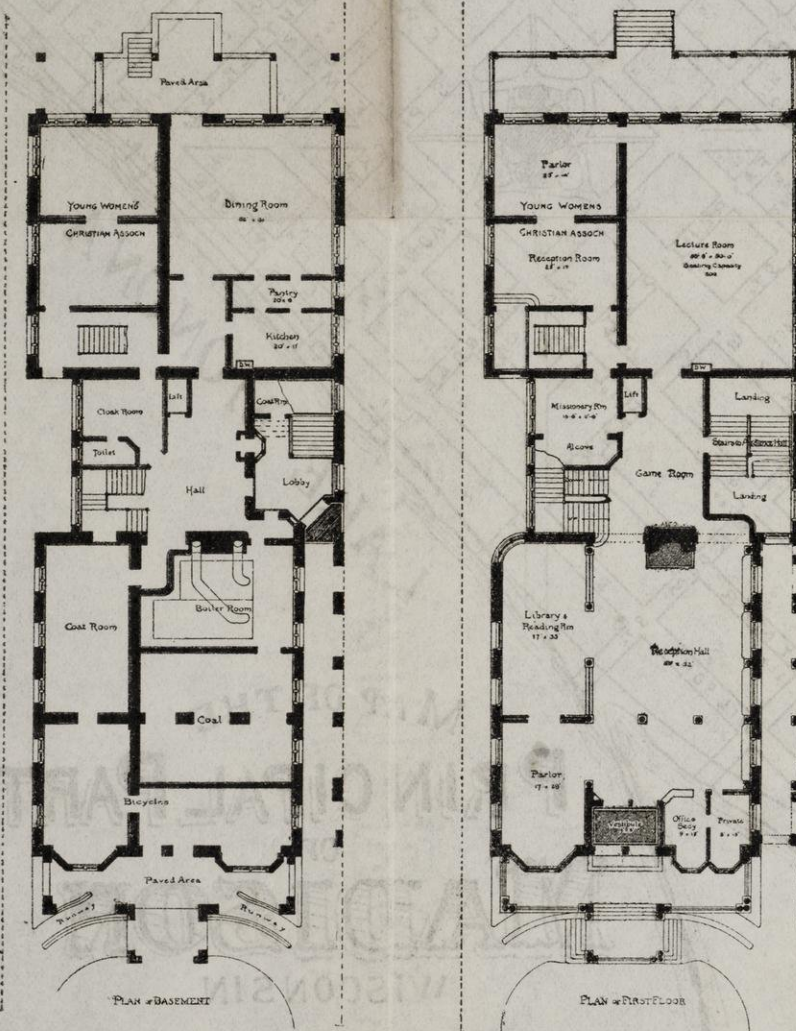
Make your appointments there. Get acquainted with the fellows. Drop in Sunday evening for a "home circle" around the fire-place.



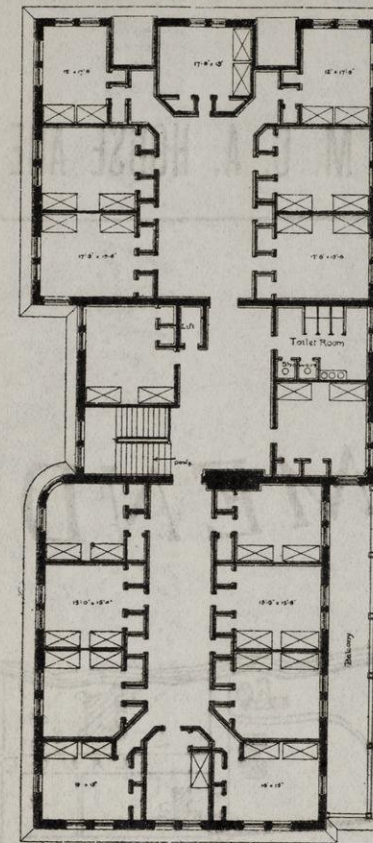
MAP OF THE  
PRINCIPAL PART  
OF  
**MADISON**  
WISCONSIN



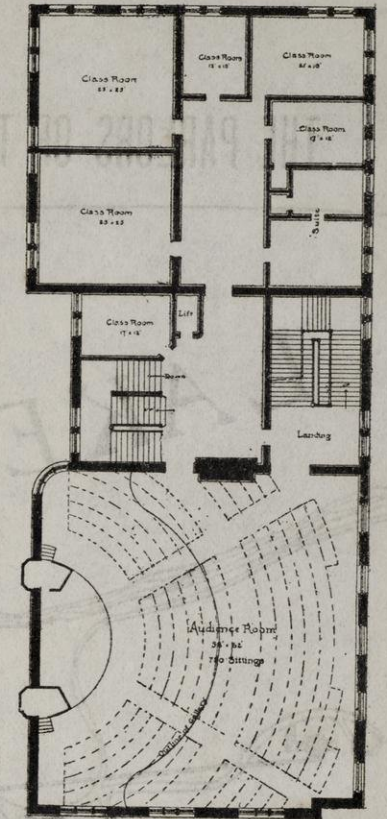
ELEVATION OF PROPOSED BUILDING



BASEMENT AND FIRST FLOOR



PLAN OF FIFTH FLOOR  
 (FIFTH FLOOR—A TYPE OF THIRD AND FOURTH FLOORS ALLOWING FOR THE AUDITORIUM)



PLAN OF SECOND FLOOR

## The greatest need of the University of Wisconsin

A suitable building for the Christian Associations.

The campaign for such a home is now on. These plans are merely tentative and are subject to change. The proposed building will cost about \$75,000.00. It will be five stories high, 150 feet long and 68 feet wide. It will be located on the Association lot just west of the gymnasium.

Pray for it, talk for it, give for it, work for it.

(See page 9.)

# The Co-Op.



**What is it?**

A students' store.

**How long has it existed?**

Six years.

**What is its purpose?**

To save money.

**How does it do it?**

By regulating prices and a division of profits.

**Who controls it?**

A board of directors.

**Who are they?**

Five men from the faculty, one alumnus, and ten students.

**How elected?**

By members of the company.

**How is the store operated?**

By a manager who is elected by the board of directors.

**What one benefit did it render last year?**

It paid back to its members \$1,600.

**Who can become a member?**

Any student of the university.

**How?**

By paying \$2.50 for a share of stock, which makes him a member for life.

**Where is it located?**

504-6 State street.

**Is the Co-op peculiar to this university?**

No! Every great college has one.

# THIS HANDBOOK

Is  
published  
to  
let  
you  
know  
about  
the  
University.

---

## THIS "AD."

Is published to let you know  
about

## The COLLEGE BOOK STORE,

where you can find second-hand  
and new text books and foun-  
tain pens. We make a specialty  
of

### SECOND-HAND BOOKS

and have a very complete stock.

Our store is at

**425 State Street.**

STUDENTS'  
HAND-BOOK

PRESENTED BY THE

YOUNG MEN'S CHRISTIAN  
ASSOCIATION

AND THE

YOUNG WOMAN'S CHRISTIAN  
ASSOCIATION

OF THE

UNIVERSITY OF WISCONSIN

YEAR OF 1900-1901

MADISON, - WISCONSIN.



Y. W. C. A.

Y. M. C. A.



## GREETING.



The Young Men's Christian Association and the Young Women's Christian Association present you this little book with the hand of welcome. The new students appreciate the helpfulness of the Handbook but we trust that both they and those entering for the first time will find it more useful than ever before. It has been our aim to make the form of the book most convenient for constant use and the contents most comprehensive in representing Association and other phases of University life. Its mission is to help to initiate you into the mysteries and to guide you through the labyrinth of college life.



# Application Blank

For Membership in the University of Wisconsin Young Men's Christian Association.

\_\_\_\_\_

Date.....

Name.....

Home Address.....

U. W. Address.....

Class..... Course.....

What is your Church Preference?.....

Are you a Member?..... Have you ever engaged in any

kind of Christian Work (example C. E. or Sunday School, etc.)?

..... State it.....

.....

# Pointers on the Y. M. C. A.

---

- I. It stands for clean Christian manhood in the University, and aggressive Christian work for and by students.
- II. It is —
  1. The LARGEST STUDENT ORGANIZATION in the world.
  2. A part of the lives of thousands of LEADING COLLEGE MEN.
  3. An organization heartily supported by the FACULTY.
  4. In GOOD FINANCIAL CONDITION.
  5. HELPED OR HINDERED by your relation to it.
- III. It offers you —
  1. Attractive and profitable RELIGIOUS MEETINGS.
  2. The use of the ASSOCIATION HOUSE.
  3. Choice FELLOWSHIP.
  4. SOCIAL LIFE.
  5. The services of the EMPLOYMENT BUREAU.
  6. Four courses in BIBLE STUDY.
  7. Two courses in MISSIONS.
  8. The HAND BOOK of information.
- IV. MEMBERS of evangelical churches may become ACTIVE MEMBERS. All others of good moral standing may become ASSOCIATE MEMBERS.
- V. Fill out this application blank. It will be presented at the next business meeting of the association and will be voted upon one week later. If your name receives a two-thirds vote, you will be notified to attend a formal but simple "induction" ceremony.

ANNUAL DUES ONE DOLLAR.

IWLH

198

1900-01

UNIVERSITY COLOR:

Cardinal.

YELL:

U, Rah, Rah, Wis-con-sin!

U, Rah, Rah, Wis-con-sin!

U, Rah, Rah, Wis-con-sin!  
Tiger.

MOTTO:

"Numen Lumen."

---

## DIRECTIONS FOR NEW STUDENTS.

### I. College of Letters and Science:

1. Those who come from accredited schools or have passed the required entrance examinations, will

(1) Present their recommendation or cards of admission to the registrar at his office on the first floor of Main Hall and fill out the enrollment blank that is furnished there. This should be filed with the Registrar and a card received in return.

(2) This card is taken to the Secretary of the Board of Regents at his office on the first floor of the Law Building, where the incidental fee of \$10.00 is paid and the card receipted.

(3) The receipted card is taken to the professor whose name is written thereon. He will act as your class officer, help you arrange your studies and give you class cards entitling you to admission into your various classes.

(4) These cards should be handed to your instructors at the first meeting of each class.

2. Those who are to take the entrance examination will

(1) Consult the Registrar at his office for directions concerning time and place of holding examinations.

(2) Having taken the examinations, call upon the Registrar the next day and ascertain results.

(3) If successful, follow out the regular process suggested above.

## **II. Pharmacy Students:**

Will go directly to the third floor of North Hall, north end. There enroll and get directions for work.

## **III. Law Students:**

Will enroll with the Dean of the College of Law, in his office, on the first floor of the Law Building.

## **IV. Adult Specials:**

Will confer with Dean Birge.

## **GENERAL DIRECTIONS.**

Watch the bulletin boards, which will be found in and about the various buildings, and the official notices in the Daily Cardinal for announcements concerning studies, time and place of meeting of classes, etc.

The map of the city found in the front of this book will be of much assistance.

Professors and old students are always willing and glad to give any information that is desired, and new students should not hesitate to consult them.

## **CLASS OFFICERS.**

### **College of Letters and Sciences.**

Graduate Students—Prof. C. F. Smith.  
Senior Class.

Ancient Classical Course, Prof. C. F. Smith.

Modern Classical Course, Prof. Slaughter.

English Course, Prof. Hubbard.

Civic Historical Course, Prof. Parkinson.

General Science Course, Prof. Daniells.

Philosophical Course, Prof. Stearns.

### Junior Class.

Ancient Classical Course, Prof. Slaughter.

Modern Classical Course, Prof. Rosenstengel.

English Course, Prof. Pyre.

Civic Historical Course, Prof. Turner.

General Science Course, Prof. Daniells.

Philosophical Course, Prof. O'Shea.

### Sophomore Class.

Ancient Classical Course, Prof. Kerr.

Modern Classical Course, Prof. Sharp.

English Course, Prof. Voss.

Civic Historical Course, Prof. Scott.

General Science Course, Prof. Snow.

### Freshman Class.

Ancient Classical Course, Prof. Laird.

Modern Classical Course, Prof. Slichter.

English Course, Prof. Dowling.

Civic Historical Course, Prof. Haskins.

General Science Course, Prof. Harper.

### Special Students.

Ancient Classical Course, Prof. Laird.

Modern Classical Course, Prof. Sober.

English Course, Prof. Olson.

Civic Historical Course, Prof. Haskins.

General Science Course, Prof. Van Velzer.

Adult Specials—Prof. Birge.

## **College of Mechanics and Engineering.**

Graduate Students—Dean Johnson.

### Senior Class.

Civil and Sanitary Engineering Courses, Prof. Whitney.

Mechanical Engineering Course, Prof. Bull.

Electrical and Electro-Chemical Engineering Courses, Prof. Jackson.

### Junior Class.

Civil and Sanitary Engineering Courses, Prof. Turneaure.

Mechanical Engineering Course, Prof. Bull.

Electrical and Electro-Chemical Engineering Courses, Prof. Jackson.

### Sophomore Class.

Civil and Sanitary Engineering Courses, Prof. Maurer.

Mechanical Engineering Course, Prof. Richter.

Electrical and Electro-Chemical Engineering Courses, Prof. Swenson.  
Freshman Class.  
Civil and Sanitary Engineering Courses, Prof. Smith.  
Mechanical Engineering Course, Prof. Mack.  
Electrical and Electro-Chemical Engineering Courses, Mr. Burgess.  
Special Students will report to the class officer the course and year in which their work principally lies.

#### **School of Pharmacy.**

Prof. Kramers.

#### **College of Agriculture.**

Prof. F. H. King, Agri.-Physics Bldg.

#### **UNIVERSITY Y. M. C. A.**

The Y. M. C. A. is for men, the only religious function in connection with the University. It stands for clean, manly, Christian living. It is entirely undenominational, no questions being asked as to belief. Any student or member of the faculty who is a member of an evangelical church may become an active member. Any student of good character who believes in righteous living may become an associate member. The annual dues are one dollar.

The past year has been the most successful through which the Association has ever passed. It was never so flourishing and on so strong a basis as today. This is due to the energy put into the work by the officers and to the hearty support which they have received from the faculty and friends of the University.

Besides the general improvement in the work of the Association, there are some special features which have been decided steps in the right direction. Two will be noticed: 1. The maintenance of an Association House at 708 Langdon St. In its rooms all meetings except Sunday meetings have been held.

The rooms are used for receptions and socials and are open at all times to the students of the University irrespective of membership. 2. The employment of a General Secretary who gives all his time to the work. 3. The launching of a campaign for a new building.

MEETINGS.—Sunday, 4:30 p. m. in the Law Building. Thursday, 6:45 to 7:30 p. m. in the Association House. Daily morning prayer meetings in the House parlors at 7:00. Volunteer Band, Monday, 7:30 a. m.

### THE NEW BUILDING.

The great project before the Association this year is the campaign for a new building. Last spring the Board of Directors engaged Mr. Allan Conover, of Madison, to prepare preliminary sketches for a five story structure, plans of which may be seen at the Association headquarters. The first floor will provide a large reception-room, a parlor, reading and game rooms, offices for the general secretary and spacious apartments for the Y. W. C. A. On the second floor will be an audience room seating 800 people and several class rooms for educational and Bible classes and for special societies. The upper floors will provide rooms for enough men to give a sufficient revenue to endow the building. The estimated cost is \$75,000.00. It will be erected on the Y. M. C. A. lot located just west of the gymnasium. Secretary Phelps has been placed in charge of the canvass throughout the state. **YOU CAN HELP GET THE BUILDING by—**

- (1) Giving all you can to the fund.
- (2) Advertising the need among your acquaintances.
- (3) Handing the names of possible contributors to Secretary Phelps, who will place them upon his mailing list.
- (4) Getting under the local work while you are in the University.



## BOARD OF DIRECTORS.

Judge J. B. Winslow, President.  
Prof. W. A. Scott, Secretary.  
Mr. E. F. Riley, Treasurer.  
Mrs. C. K. Adams.  
Prof. W. H. Williams.  
Mr. W. W. Cooper.  
Mr. F. D. Taylor, ex-officio.  
Mr. F. L. Hook, ex-officio.

## ADVISORY COMMITTEE.

Prof. M. V. O'Shea, Chairman.  
Prof. C. S. Shlichter.  
Prof. W. A. Scott.  
Judge J. B. Winslow.  
Colonel W. J. Anderson.  
Senator J. M. Whitehead.  
Mr. F. D. Taylor, ex-officio.  
Mr. F. L. Hook, ex-officio.

## OFFICERS.

F. D. Taylor, President.  
F. O. Leiser, Vice-President.  
D. I. Grover, Recording Secretary.  
F. L. Hook, Treasurer.  
P. C. Foster, Office Secretary.  
G. S. Phelps, General Secretary.

## COMMITTEES.

Membership—D. I. Grover (Chairman), Hasse, Buchholz, Perham, Plumb, Swain, J. E. Smith, Eggers, C. L. Jones, Lathrop, C. E. Long, Hamilton.

Religious Meetings—Swobada (Chairman), Wilson, W. S. Hopkins, Cadby, A. A. Baldwin, Goodenough, Angel, G. S. Ishakawa.

Social— (Chairman), McGowan, Hall, H. W. Hibbard, Quigley, Shower, Disque, Birge.

Bible Study—E. A. Hook (Chairman), Rehbarg, Cronk, Almquist, Ekern, Mott, Schoensigel, B. H. Gaffin.

Finance—F. L. Hook (Chairman), Harvey, Vea, Jorstadt, McKesson, J. C. Nelson.

Music—Jno. W. Nevius (Chairman), Washburn, Olson, H. R. Smith, C. H. Gaffin, Moseley.

Intercollegiate Relations—F. O. Leiser, Waite, Patrick, Barnard, Levisse.

Short Course—Price (Chairman), Posten, Cornelius, Foster, Douglas.

Missionary—W. W. Waite, Morgan, Williamson, Nevius.

### **ROOMS AND BOARD.**

Lists of rooms and boarding places, with prices and other information, may be obtained at the office of the General Secretary, in the Y. M. C. A. house.

### **EMPLOYMENT BUREAU.**

The Association maintains an employment bureau for the benefit of men who wish to work their way through the University. Over 100 jobs were furnished by this bureau last year. Four rules govern our policy:

(1) To help only those who are willing to help themselves.

(2) To guarantee good service to those who apply for men.

(3) To require faithful service from those who accept jobs.

(4) To refuse assistance to those who do not keep their promises.

Application for jobs should be made to the Office Secretary, Mr. Foster.

### **BIBLE STUDY.**

The Y. M. C. A. has adopted the four years' course in Bible study outlined by the International Committee. During the past year classes have been conducted in the studies outlined for the first three years. This year the entire four years' course will be taken up. By beginning in the Freshman year, each student has an opportunity to finish the four years' course while in the University.

The Biblical department of the University offers courses for a critical study of the text in Hebrew and Greek, for

which credit is given in the University course. For information regarding these courses consult Professor W. H. Williams.

### **THE MISSION STUDY CLASS.**

A feature of the Association work is the mission study classes. One class is under the leadership of Dr. John C. Shedd and meets in the Law Building Sundays from 3:30 to 4:30 p. m. The other is led by a student, and meets Sunday morning.

### **SOCIAL.**

Frequent social events are given during the year for the men of the University. When you see the sign "Stag Affair" remember that it is the best thing going. Several receptions are given jointly with the Y. W. C. A. Don't forget the Men's reception the first Saturday night in the Y. M. C. A. House, and the grand opening reception given by the two Associations in Library Hall the second Saturday night.

### **THE UNIVERSITY Y. W. C. A.**

**OBJECT.** The mission of the Y. W. C. A. is to develop and strengthen the spiritual life of the young women of the University. With this end in view the Association carries on the following lines of activity:

(1) **RELIGIOUS MEETINGS.** Held in Parlor A of Ladies' Hall each Wednesday afternoon at five o'clock. Coming as it does in the midst of the rush of regular intellectual work, this meeting has been one the most refreshing hours of the week.

(2) **SOCIAL.** By a series of socials and receptions the women have been helped in making large numbers of friends and have enjoyed many social evenings together. Frequent receptions are given with the Y. M. C. A. All should attend the opening joint reception the second Saturday night of the first semester.

(3) BIBLE STUDY. One of the most encouraging and significant results of the past year's work of the Young Woman's Christian Association was the sending of ten women to the Lake Geneva summer conference for eleven days of Bible training and Association fellowship. The excellent courses in Bible study which were there offered aroused a deep interest in this phase of Christian training and resulted in the adoption of a new plan of Bible work in the University for next year.

There are to be organized several small groups led by competent students for systematic Bible study. All women of the University, whether members of the Association or not, are invited to join one of these classes. Two courses will be offered, one in the "Life of Jesus Christ," which will run during the first semester, and the other a course in "Old Testament Characters," to run through the second semester.

(4) MISSIONARY. Several meetings will be devoted to the study of the conditions which exist in mission fields. A class will meet each Sunday for the study of missions under Dr. Shedd. This is a joint class with the Y. M. C. A.

(5) INFORMATION BUREAU. The officers are eager to be of service to the new girls in helping them get rooms, board and in guiding them through the other perplexing things which come to the new student. Call at "Parlor B" on the second floor of Ladies' Hall. Office hours during the first week are 9 to 12 a. m. and 2 to 4 p. m.

### OFFICERS AND COMMITTEES.

President—Frances Wilcox; Vice President, Flora Mansfield; Recording Secretary, Jennie Sherrill; Corresponding Secretary, Florence Spence; Treasurer, Anna Caulkins.

Membership Committee—Flora Mansfield, Eliza Bartlett, Florence Spence, Miss Fischer, Eva Burke.

Devotional Committee—Blanche Fulton, Mrs. Merrill, Ivah Gilbert.

- Intercollegiate Committee — Florence Spence, May Telford, Miss Fischer.
- Music Committee—Marie Hinkley, Clara Ross.
- Ways and Means Committee—Agnes Martin, Mina Anderson.
- Finance Committee — Anna Caulkins, Grace Hartle, George Steele, Elsa Sawyer.
- Sunday Morning Meetings—Jean Bishop, Genevieve Stevens.
- Bible Study Committee—Mary Wilson, Florence White, Marie Hinkley, Annie Caulkins, Frances Wilcox, Ivah Gilbert, Alice Thomas, Flora Mansfield, Josephine Wells, Grace Andrews, Blanche Fulton, Florence Spence.
- Missionary Committee — Nellie Jones, Alice Chamberlain, Sarah Davidson, Bertha Preuss, Edna Parks, Fannie Wallbridge, Mrs. Beatty, Mrs. Shedd.
- Social Committee—Alice Thomas, Elsie Cady, Edith Ferris, Nellie Sias, Miss Bossard.
- Geneva Committee—Susie Lowell, Flora Mansfield, Jean Bishop, Edith Martin, Lottie Abbott, Alice Thomas, Mabel Fletcher, Eunice Welch, Miss Ochsiner.
- Hand-Book Committee—Josephine Wells, Sena Johns, Lelia Bascom.

## CHURCHES.

The churches of Madison are glad to welcome students to all services. Christian students should at once unite with the church of their own denomination.

### Baptist.

FIRST BAPTIST—16 S. Carroll. Rev. Colestock, pastor.

### Catholic.

HOLY REDEEMER—W. Johnson, between N. Carroll and N. Henry. Rev. Aloys Zitterl, pastor; Rev. J. Haide, assistant pastor.

ST. PATRICK'S—E. Main, between S. Hancock and S. Canal. Rev. P. B. Knox, pastor.

ST. RAPHAEL—Cor. Main and Henry. Rev. J. M. Naughtin, pastor.

### **Congregational.**

FIRST CONGREGATIONAL — West Washington Ave., corner N. Fairchild. Rev. E. G. Updike, pastor.

### **Presbyterian.**

CHRIST PRESBYTERIAN—SW. cor. Wisconsin Ave. and W. Dayton. Rev. B. B. Bigler, pastor.

ST. PAUL'S (German)—15 S. Webster. Rev. H. A. Winter, pastor.

### **Unitarian.**

UNITARIAN—SE. cor. Wisconsin Ave. and W. Dayton. Rev. W. D. Simonds, pastor.

### **Episcopal.**

GRACE—Cor. W. Washington Ave. and N. Carroll. Rev. Fayette Durlin, rector; Rev. C. Roberts, assistant.

### **Evangelical.**

IMMANUEL'S—Cor. N. Hamilton and N. Pinckney. Rev. Jno. Nickel, pastor.

### **Lutheran.**

ST. JOHN'S (German)—E. Washington Ave., cor. N. Hancock. Rev. C. P. Wilke, pastor.

BETHEL (Norwegian)—Cor. N. Hamilton and N. Butler. Rev. Theo. Eggen, pastor.

NORWEGIAN LUTHERAN—941 Spaight. Rev. J. Groested, pastor.

### **Methodist Episcopal.**

FIRST METHODIST EPISCOPAL—NE. cor. Wisconsin Ave. and E. Dayton. Rev. A. B. Storms, pastor.

GERMAN METHODIST EPISCOPAL—NW. cor. E. Mifflin and N. Webster. Rev. Chas. F. Hedler, pastor.

## LIBRARIES.

Madison is noted for its libraries, of which there are seven. The University furnishes four—the General Library, open daily except Sunday from 8:00 a. m. to 10:00 p. m.; the Law Library, located on the second floor of the Law Building; the Agricultural Library, located on the second floor of South Hall; the Woodman Astronomical Library, located at the Observatory. These aggregate over 62,000 volumes and 20,000 unbound pamphlets. Each student is required to make a deposit of \$2.00 before he is allowed to draw out books. This will be refunded at the end of the year. Each fall the librarian gives a course of lectures on the use of reference books and the card catalogue.

The other libraries are: The State Historical Library, located in the new fire-proof building on the lower campus and containing over 104,000 volumes and 100,000 pamphlets, original manuscript collections, and rare newspaper files, which go to make it one of the most noted and valuable historical libraries in the country. It is open to all students of the University.

The Madison City Library, located in the city hall opposite the postoffice. Open to students.

The State Law Library, located in the north wing of the Capitol. Open to students.

## MUSEUMS.

Geological, mineralogical, zoological and botanical museums are located in Science Hall. For admission apply to the janitor.

The State Historical Museum, a place of unusual interest, is located on the fourth floor of the new library building.

## ORGANIZATIONS.

### (1) Self-Government Association of the University of Wisconsin.

We cannot really enjoy true university life unless we feel ourselves an active part of the University as a whole.

The working out of a plan of self-government involves many difficulties—and still involves them—but it has been, on the whole, a success. Every woman in the University of Wisconsin is a member of this self-government association. Your duties as a member will be—(1) to attend its mass meetings; (2) to keep its rules both in letter and spirit; (3) to lend your presence and your aid at its entertainments. Its rules are few, namely, to leave all parties at twelve o'clock. The executive board consists of ten girls. Its officers are: Clara Stillman, president; Anna Caulkins, vice president; Bernice Ballard, secretary. Do not forget your duties as a member.

### (2) Literary.

The literary societies, which are chiefly devoted to oratory and debating, hold a very important place among student organizations. The weekly debates afford an invaluable training that cannot be obtained elsewhere. New students should join them as soon as possible after entering the University, for thus the training is long and thorough, and a chance is given to take part in the public contests. During the entire course the literary society occupies a place in University work that cannot be omitted without serious loss. Many honors are obtained through it, and the reputation of the University in literary affairs is widened.

The society for women is Castalia, which holds its meetings in Ladies' Hall.

Athena and Hesperia, of the men's societies, hold meetings each Friday in Main Hall, fourth floor; Philomathia in the tower of Science Hall.



The two literary societies of the Law School are the Columbian and the Forum, both holding weekly meetings in the Law Building.

The different public contests held during the year are interesting and beneficial.

The Freshmen hold a declamation contest in the spring, at which prizes are offered. Each literary society also annually presents a programme entirely conducted by Freshmen, called the "Freshman Blowout."

Other literary features are: The semi-public debate, composed of Sophomores, and the joint debate. Oratory is becoming more and more prominent.

### (3) Special Clubs.

Much of the best work connected with the voluntary activity of the University is done in the special societies and clubs organized in the various departments. These all graduate students are cordially invited to join.

THE GRADUATE CLUB, meeting fortnightly, in the interest of those doing post-graduate work in any line. The aim of this club is partly social and partly to bring advanced students in touch with the faculty and with the national federation of graduate clubs.

THE SCIENCE CLUB, organized in 1896, brings together all those interested in general scientific discussions and has a large membership of the faculty and advanced students.

THE CLASSICAL CLUB meets fortnightly. Those who read Latin and Greek are eligible for membership.

THE ENGLISH CLUB draws together those interested in the study of English literature, while the Fortnightly is a student club for those who especially care to read together the best modern writers.

THE PEDAGOGICAL CLUB was organized in 1898 for the benefit of those intending to enter the teacher's profession.

THE GERMAN DEPARTMENT has an organization for advanced study in

the German language and literature, known as Die Germanistische Gesellschaft.

THE NORA SAMLAG is the society connected with the Norse department.

THE ENGINEERS' CLUB is a flourishing organization of the students in that department.

THE PHARMACEUTICAL SOCIETY is large and active.

The Chemical, Classical Journal and Physical Journal Clubs are for advanced students in these departments.

The other departments maintain seminaries of similar character, such as the Economic Seminary, the Historical Conference for graduate students, and the Spare Hour Reading Circle, open to all who care to attend.

## GYMNASTIC REGULATIONS.

### For Men.

The Gymnasium is one of the most largely used of the University buildings, and the students could hardly get along without it, because of the facilities it offers for the care of the body. Cards of admission to the privileges are obtained from Director Elsom, and the fees are paid at Secretary Riley's office in the Law Building. All students who use the gymnasium are required to pay the fee of \$2.00, and if a locker is wanted, there is a fee of \$1.50 extra. All Freshman and Sophomore students, and all students ranking with them, are required to take the regular classes in gymnastics, which take place on Mondays and Fridays for Freshmen, and Wednesdays and Saturdays for Sophomores. A physical examination is required of every student, and is given by the Director in his office. Various measurements are taken, strength tests recorded, and an examination of the heart and lungs carefully made. At the close of the season's work another examination is given and the improvement noted.

The good of systematic exercise in the gymnasium can hardly be over-esti-

mated, and every student should do careful and conscientious work, so that mental growth may be accompanied by physical strength and improvement. No college in the country is better equipped for the work of physical culture, and none of the gymnasiums are larger or better adapted to the work than the one we have in Wisconsin.

### **For Women.**

The indoor class work continues from November until May.

In athletics basket ball is the popular game, and much enthusiasm has been created the past year. There are four teams, the Freshman, the Sophomore, the Upper Classmen, and the Varsity.

The Tennis Club has grown in numbers and interest.

Birding Clubs, under the leadership of Professor Libby and assistants have been very popular and instructive.

Rowing is much enjoyed, and many have learned to manage the row-boats this year.

### **MUSICAL ORGANIZATIONS.**

The opportunities for enjoying and partaking in musical matters are very numerous in the University, and all students interested in any form of music are advised to ally themselves with some of the various organizations.

**1. The Madison Choral Union,** under direction of Prof. Parker, of the School of Music, is a mixed chorus of about two hundred voices, which holds weekly rehearsals for the study of choral masterpieces. Those having some knowledge of reading music may become members. Through the instrumentality of the Union several fine concerts are given each year, which no student can afford to lose, since the hearing of the great oratorios, and the fine orchestras and solo singers imported to render them is an essential part of a complete education.

## **2. The Men's Glee Club**

furnishes opportunity for fun and practice. There are vacancies every year for those possessing good voices and musical aptitude.

## **3. The Girls' Glee Club**

of sixteen voices ably assists the U. W. Club in home concerts.

## **4. The U. W. Band**

has been in fine condition the past year, and we have every reason to be proud of its proficiency. It plays for regimental drill, for military parties and on various other occasions.

## **5. College Songs**

are a vital part of college life, so thanks are due to the class of '98 for the new U. W. Song Book, published under their direction. Several mass meetings, such as have proven so popular in the past, for the practice of college songs, will be held during the ensuing year.

## **PUBLICATIONS.**

THE DAILY CARDINAL is published each week day and is found to have become a necessity in the machinery of the institution. It is one of about 12 similar publications in this country, and the students have good reason to feel proud of its success. It is controlled by the stockholders in the Cardinal Association, who elect the ten editors, these in turn selecting the reporters from those entering into competition.

THE AEGIS is a literary monthly published by a staff of five editors. Its pages offer an opportunity to those whose ambition lies along literary lines.

THE BADGER is the college annual published every spring by a board of editors elected by the Junior class.

THE WISCONSIN ENGINEER is published quarterly by the students and faculty of the Collège of Engineering.

THE HAND BOOK is published at the beginning of each year by the Christian Associations. It is aimed to make this a handy source of information to all.

THE SPHINX, the "funny paper" of the University. The first copy was a surprise, and each succeeding edition has been a delight to all students.

### **U. W. CO-OPERATIVE ASSOCIATION.**

Founded in 1892.

This association was organized by members of the faculty and students. At the beginning of each year the Board of Directors elects a manager who has entire charge of the business. Any student may become a life member of this association upon the payment of \$2.50. A certain dividend is declared at the end of the college year. Last year the sum of \$1,600.00 was paid back to the students in rebates of 10 per cent in cash or 12½ per cent in trade.

The Co-op. is a real center for any book or University supply that is needed, and all students should lend their aid or support.

Call and learn the real value of trading at Co-op.

#### **Officers.**

Prof. L. S. Smith, President.  
Harry Adams, '00, Vice-President.  
T. S. Morris, '99, Manager.

#### **Board of Directors.**

Dr. B. H. Meyer. Prof. E. A. Birge.  
Mr. Walter Alexander.  
C. N. Brown, Alumnus.  
P. Tschorner, Law.  
W. B. Clark, '00; John Barney, '01;  
W. D. Buchholz, '01; F. O. Leiser, '02;  
P. Strehlow, '02; R. C. Disque, '03; E.  
A. Ekern, '03.

#### **Members at Large**

Dr. Elsom. E. W. Weber,  
J. S. Miller, '02.

## FRATERNITIES.

Fraternities, or "Greek letter societies," occupy a prominent place in University life. They are secret societies composed of men having similar tastes. They largely represent the social life of the University. As a rule a man's college career is much influenced by his fraternity life. This being true, one should take a great deal of time in considering an invitation to join. It is the consensus of opinion of experienced fraternity men that it is wisest for a man to wait until his Sophomore year before choosing a fraternity. If the fraternity is worth joining, it will wait a year. In accepting an invitation, one should consider (1) the national standing of the fraternity; (2) the character of the men who compose the local chapter; (3) that for which the local chapter chiefly stands in the University, viz., athletics, society, scholarship, etc.; (4) the expenses in the way of dues, dress and living. If you join one of the following societies, make your life count as a clean living, fellow-serving Christian man.

- Beta Theta Pi.....Alpha Pi Chapter  
Chapter House, 614 Langdon St.
- Chi Psi.....Alpha Iota  
Chapter House, 627 Lake St.
- Delta Tau Delta.....Beta Gamma  
Chapter House, 16 Mendota Court.
- Delta Upsilon.....Wisconsin Chapter  
Chapter House, 635 State St.
- Psi Upsilon..... Rho  
Chapter House, 620 State St.
- Phi Rho Beta.....Local Chapter  
Chapter House, 630 Langdon St.
- Sigma Chi.....Alpha Lambda  
Chapter House, 19 Mendota Court.
- Theta Delta Chi Sigma Deuteron Charge  
Chapter House, 703 State St.
- Phi Delta Theta.....Wisconsin Alpha  
Chapter House, 621 Lake St.
- Phi Gamma Delta.....Mu  
Chapter House, 613 Francis St.
- Phi Kappa Psi.....Wisconsin Alpha  
Chapter House, 625 Francis St.
- Phi Delta Phi (Law)....Harlan Chapter

Kappa Sigma.....Beta Epsilon  
 Chapter House, 515 Franklin St.  
 Phi Beta Kappa  
 (Honorary).....Wisconsin Alpha

**SORORITIES.**

Kappa Kappa Gamma.....Eta  
 Chapter House, 521 N. Henry.  
 Delta Gamma.....Omega  
 Gamma Phi Beta.....Gamma  
 Chapter House, 257 Langdon St.  
 Kappa Alpha Theta.....Psi  
 Pi Beta Phi.....Wisconsin Alpha  
 Chapter House, 415 N. Henry St.  
 Alpha Phi.....Iota  
 Chapter House, 250 Langdon St.  
 Delta Delta Delta.....Mu

## Foot Ball Schedule.

---

Sept. 29—Ripon at Madison.  
Oct. 6—Lake Forest at Madison.  
Oct. 13—Beloit at Milwaukee.  
Oct. 20—Upper Iowa at Madison.  
Oct. 27—Grinnel College at Madison.  
Nov. 3—Minnesota at Minneapolis.  
Nov. 10—Notre Dame at Madison.  
Nov. 17—Chicago at Chicago.  
Nov. 24—Open.

---

### NOTICE.

---

We solicit your patronage for our  
advertisers. They have assisted us very  
materially in the publication of this  
book, and we believe you will find all  
of them reliable firms.

HAND BOOK COMMITTEE.

---

**DR. LINDSEY S. BROWN,**

MADISON.

**EYE AND EAR**

**INFIRMARY,**

**Room 2, Brown's Block.**

SPECTACLES FITTED.



# AHEAD

OF

---

— THE —  
**UNDERWOOD TYPEWRITER**



---

## THEM ALL.

The only absolutely visible writing machine made without the sacrifice of a single advantage and with the addition of many other conveniences.

WE SELL, RENT AND  
REPAIR ALL MAKES.

---

**MADISON CYCLE CO.,**

113 State Street.

MADISON, - WISCONSIN.

---

SEPTEMBER, 1900.

---

<b>Sun.</b> 23	
<b>Mon.</b> 24	Registration Day.
<b>Tue.</b> 25	Entrance Examinations. Registration Day.
<b>Wed.</b> 26	First Semester Opens.
<b>Thur.</b> 27	
<b>Fri.</b> 28	
<b>Sat.</b> 29	Men's Reception.

---

SEPTEMBER, 1900.

---

Sun.  
30

---

OCTOBER, 1900.

---

Mon.  
1

Tue.  
2

Wed.  
3

Thur.  
4

Fri.  
5

Sat.  
6

Joint Reception. Library Hall.

**P. F. HARLOFF,**  
**Electrical Supplies.**

---

Phone 560. 301 STATE STREET.

---

**FRED HUELS,**  
**Gunsmith.**

All kinds of Gunsmith and Locksmith work. Ammunition of every description.

**Umbrellas Repaired and Recovered,  
Skates Sharpened.**

115 STATE STREET.

---

**FRANK HAVEN,**  
**BARBER SHOP.**

Cor. State and Henry Sts.

10 SHAVES AND A HAIR CUT \$1.

---

**CHAS. S. SHELDON, M. D.**

---

OFFICE OVER  
MOSELEY'S BOOK STORE.

---

Office Hours from 2 to 5 P. M.

---

OCTOBER, 1900.

---

Sun.

7

---

Mon.

8

---

Tue.

9

---

Wed.

10

---

Thur.

11

---

Fri.

12

---

Sat.

13

---

---

OCTOBER, 1900.

---

Sun.

14

---

Mon.

15

---

Tue.

16

---

Wed.

17

---

Thur.

18

---

Fri.

19

---

Sat.

20

---

---

OCTOBER, 1900.

---

Sun.

21

---

Mon.

22

---

Tue.

23

---

Wed.

24

---

Thur.

25

---

Fri.

26

---

Sat.

27

---

**DR. R. C. MONTGOMERY,**  
Homeopathian Physician and  
Surgeon.

---

**OFFICES: 25 N. Pinckney Street.**  
Stand. Tel. 268.

---

**F. COYNE,**

Latest....

**FASHIONABLE MILLINER**

....at lowest prices.

10 S. Carroll Street,  
**MADISON, - WISCONSIN**

---

**DR. FRANK SMITH,**  
**DENTIST.**

---

Ellsworth Block, Suite 13, 14, 15,  
MADISON, WIS.  
TEL. 933.

---

**UNIVERSITY AV. SHOE STORE**

STUDENTS' FINE SHOES A SPECIALTY.

**PRICES THE LOWEST CONSISTENT  
WITH GOOD QUALITY.**

**Repairing Neatly and Promptly Done.**

**JOE DUNKEL,**  
604 University Ave,



---

**OCTOBER, 1900.**

---

**Sun.**

28

---

**Mon.**

29

---

**Tue.**

30

---

**Wed.**

31

---

---

**NOVEMBER, 1900.**

---

**Thur.**

1

---

**Fri.**

2

---

**Sat.**

3

---

# University School of Music.

---

## ALL BRANCHES TAUGHT.

Students received at any time.

No fees except for musical tuition,

Fees as low as compatible with competent instruction. Theoretical studies may be taken as electives with proper credits by students in any of the University courses.

Credit given for advanced piano playing in junior and senior years.

See catalogue, under headings, "School of Music," and "Music," or address

**F. A. PARKER, or W. M. FOWLER,**

Director.

Secretary.

MADISON,

WIS.

---

## CORPS OF INSTRUCTION.

CHARLES K. ADAMS, LL. D., President.

FLETCHER A. PARKER, History, Harmony,  
Counterpoint and Organ.

JAMES S. SMITH, Piano.

ADA BIRD, Piano.

WINIFRED C. CARD, Piano.

ADELAIDE FORESMAN, Voice.

C. E. ROBERTS, Voice.

CHARLES NITSCHKE, Violin and other Orchestral Instruments.

ALBERT C. EHLMAN, Violincello.

ELIZABETH M. KEELY, Harp.

HJALMAR O. ANDERSON, Mandolin.

M. M. FOWLER, Banjo.

MRS. M. E. BRAND, Guitar.

---

**NOVEMBER, 1900.**

---

**Sun.**

4

**Mon.**

5

**Tue.**

6

**Wed.**

7

**Thur.**

8

**Fri.**

9

**Sat.**

10

**DR. E. J. HANAN,**  
**DENTIST.**

3 West Main Street,  
MADISON, - WISCONSIN.

---

**RICHARD G. NORTON,**  
Repairer of  
**Watches, Clocks and Jewelry**  
22 N. Carroll St.,  
MADISON, - - WISCONSIN.

---

1864.

1900.

**CHAS. HAWKES,**  
**Tailor.**

Refitting, Repairing, Renovating and  
Pressing to Order.

8 Fair Store Block, MADISON, WIS

---

**E. EVERETT, M. D.**  
**EYE, EAR, NOSE, THROAT.**  
GLASSES FITTED TO THE EYES.  
OFFICE: Pioneer Block, 1-5 East Main Street  
9-12 A. M., 2-5 P. M.  
TELEPHONE: 782, 2 rings, house; 4 rings, office  
Residence: 915 University Ave.

---

**NOVEMBER, 1900.**

---

**Sun.**

**11**

---

**Mon.**

**12**

---

**Tue.**

**13**

---

**Wed.**

**14**

---

**Thur.**

**15**

---

**Fri.**

**16**

---

**Sat.**

**17**

State Convention at Janesville.

**CURTISS,**  
**Photographer....**

---

Finest Gallery in the West.

Take Elevator. VILAS HOUSE BLOCK

---

**LOUIS R. HEAD, M. D.,**

Suite 4-7, BROWN BLOCK.

Hours 2-5 P. M.

Telephone 131.

---

**Dr. E. H. Drews,**  
**DENTIST,**

Office hours, 9-12 A. M., 1:30-5 P. M.

Res. Phone 629.

25 E. Main St., MADISON, WIS.

---

**Theo. F. Dresen,**

Specialist in Repairing

Watches. Clocks and Jewelry

218 STATE STREET.

---

**NOVEMBER, 1900.**

---

**Sun.**  
**18**

---

**Mon.**  
**19**

---

**Tue.**  
**20**

---

**Wed.**  
**21**

---

**Thur.**  
**22**

---

**Fri.**  
**23**

---

**Sat.**  
**24**

---



**ALFORD BROS.,**

**STEAM  
LAUNDRY,**

113-115 North Carroll Street,

---

UP-TOWN OFFICE, VILAS BLOCK.



---

**NOVEMBER, 1900.**

---

**Sun.**

25

---

**Mon.**

26

---

**Tue.**

27

---

**Wed.**

28

---

**Thur.**

29

---

**Fri.**

30

---

---

**DECEMBER, 1900.**

---

**Sat.**

1

---

**G. C. KOLLOCK,**

**DENTIST.**

31 NORTH PINCKNEY STREET,

MADISON, WIS.

---

Emerson Piano sold  
since 1875 at Warner's

**“27”**

---

**RIDGEWAY**

The High Grade....

**Photographer**

MARSTON BLOCK,  
MADISON.

---

**A. P. FELTON,**

Locksmith and Cutler.

**GUNS AND REVOLVERS REPAIRED.**

**Fine Umbrellas Repaired and  
Recovered.**

114 N. Carroll Street.

---

DECEMBER, 1900.

---

Sun.

2

---

Mon.

3

---

Tue.

4

---

Wed.

5

---

Thur.

6

---

Fri.

7

---

Sat.

8

---

STATE STREET  
**LIVERY**

**BROWN & NEVIN,**  
PROPRIETORS.

---

UP-TO-DATE  
RIGS  
OF  
ALL  
KINDS.  
PARTY  
CARRIAGES  
A  
SPECIALTY.

---

**CORNER STATE AND GILMAN.**

Telephone 53,

---

DECEMBER, 1900.

---

Sun.

9

---

Mon.

10

---

Tue.

11

---

Wed.

12

---

Thur.

13

---

Fri.

14

---

Sat.

15

---

**Chase...**

---

# Dentist

...301 State Street.

---

## Dr. W. Constantine Abaly

fits glasses, and treats both surgical and medical diseases of the Eye, Ear, Nose and Throat. Has practiced in the city over 14 years. Office, suite 8, 9, 10 and 11, Brown Block.

**MADISON, WIS.**

---

## Wisconsin Academy

Corner State  
and Gilman Sts.  
Madison, Wis.

Accredited to all courses of the University.

**Gives Thorough Preparation in all  
lines of Academic Work.**

---

### UNIVERSITY STUDENTS

**can here make up deficiencies in their  
preparatory Courses.**

---

For Catalogue address

CHARLOTTE E. RICHMOND  
Principal.

---

DECEMBER, 1900.

---

Sun.

16

---

Mon.

17

---

Tue.

18

---

Wed.

19

---

Thur.

20

---

Fri.

21

---

Sat.

22

---

# Hollister's Pharmacy

First National Bank Block, Madison.

---

Strictly headquarters for all  
**MICROSCOPIC SUPPLIES AND  
INSTRUMENTS.  
DRUGS, TOILET NECESSARIES  
AND SUNDRIES.**

The most complete Drug Emporium in the state. Choice, fresh goods. Our prescription department is in charge of competent dispensers.

If you want careful and prompt service we invite your patronage.

---

## Madison Steam Dye Works

Soft and Stiff Hats Cleaned,  
Blocked and Re-Trimmed.

Also Ladies' and Gentlemen's Garments  
Cleaned and Pressed at  
\$1.25 per suit.

**MADISON STEAM DYE WORKS.**

112 S. Pinckney St., - MADISON, WIS  
Telephone 192.

---

## Miss I. R. Beck,

UP-TO-DATE

## Millinery

4 NORTH CARROLL STREET.



---

DECEMBER, 1900.

---

Sun.

23

---

Mon.

24

---

Tue.

25

---

Wed.

26

---

Thur.

27

---

Fri.

28

---

Sat.

29

---

---

DECEMBER, 1900.

---

Sun.

30

Mon.

31

---

JANUARY, 1901.

---

Tue.

1

A Happy New Year.

Wed.

2

Thur.

3

Fri.

4

Sat.

5

---

**JANUARY, 1901.**

---

**Sun.**

**6**

---

**Mon.**

**7**

---

**Tue.**

**8**

---

**Wed.**

**9**

---

**Thur.**

**10**

---

**Fri.**

**11**

---

**Sat.**

**12**

---

## TRACY, GIBBS & CO.,

stand ready at any time to do the square thing by you if you want any kind of Printing done.

**WHY not try our Writing Paper?**

---

AT THE  
**Marquette Tailoring Co.,**

is where you can get your money's worth. Call.

12 NORTH CARROLL STREET.

---

**FINE CANDIES**  
and  
**FRESH FRUIT**

At  
**R. J. McCARLL'S,**  
Corner State and Henry Streets.

---

WE continue to lead in efficiency and reliability.

## Menge's Pharmacies,

28 WEST MIFFLIN.  
829 UNIVERSITY AVE.

---

**JANUARY, 1901.**

---

**Sun.**  
**13**

---

**Mon.**  
**14**

---

**Tue.**  
**15**

---

**Wed.**  
**16**

---

**Thur.**  
**17**

---

**Fri.**  
**18**

---

**Sat.**  
**19**

---

**JANUARY, 1901.**

---

**Sun.**  
20

---

**Mon.**  
21

---

**Tue.**  
22

---

**Wed.**  
23

---

**Thur.**  
24

---

**Fri.**  
25

---

**Sat.**  
26

---

**JANUARY, 1901.**

---

**Sun.**

27

**Mon.**

28

**Tue.**

29

**Wed.**

30

**Thur.**

31

---

**FEBRUARY, 1901.**

---

**Fri.**

1

**Sat.**

2

If you buy your Shoes at the

# U. W. SHOE STORE

you will never regret it and always buy more. Their shoes can not be outclassed in **Quality, Price or Style.** Fine repairing a specialty. Come and have your shoes mended and try our prices. You will find the place in the Cardinal Block, 708 University Avenue.

**J. J. Buellesbach.**

---

**HENRY PECHER**

**Barber Shop**

AND

**Bath Rooms.**

---

**414 STATE STREET.**



---

FEBRUARY, 1901.

---

Sun.

3

Mon.

4

Tue.

5

Wed.

6

Thur.

7

Fri.

8

Sat.

9

---

FEBRUARY, 1901.

---

Sun.

10

---

Mon.

11

---

Tue.

12

---

Wed.

13

---

Thur.

14

---

Fri.

15

---

Sat.

16

---

---

**FEBRUARY, 1901.**

---

**Sun.**

**17**

---

**Mon.**

**18**

---

**Tue.**

**19**

---

**Wed.**

**20**

---

**Thur.**

**21**

---

**Fri.**

**22**

---

**Sat.**

**23**

---

**FEBRUARY, 1901.**

---

**Sun.**

**24**

---

**Mon.**

**25**

---

**Tue.**

**26**

---

**Wed.**

**27**

---

**Thur.**

**28**

---

---

**MARCH, 1901.**

---

**Fri.**

**1**

---

**Sat.**

**2**

---

MARCH, 1901.

---

Sun.

3

---

Mon.

4

---

Tue.

5

---

Wed.

6

---

Thur.

7

---

Fri.

8

---

Sat.

9

---

# Y. M. C. A.

Make your dates for the

## Post-Exam Jubilation.

# Y. W. C. A.

---

You must call at the

## Sumner Drug Stores,

15 S. Pinckney.—502 State,

when in need of Drugs or Sundries

ESTABLISHED IN 1859.

---

## Groves-Barnes Music Co.,

Chickering, A. B. Chase, Blasius, Fischer,  
Straube, Albrecht, Regent, Franklin,  
Schiller and other

### PIANOS.

The finest stock of Mandolins, Guitars and  
Violins kept in the city. Popular Sheet  
Music a specialty. We keep every-  
thing in the musical line.

3 S. Pinckney St., - MADISON, WIS.

---

## L. J. OSTIN,

MERCHANT

TAILOR,

Phone 662. 332 State St., Cor. Gorham.

---

MARCH, 1901.

---

Sun.

10

---

Mon.

11

---

Tue.

12

---

Wed.

13

---

Thur.

14

---

Fri.

15

---

Sat.

16

---

---

MARCH, 1901.

---

Sun.  
17

Mon.  
18

Tue.  
19

Wed.  
20

Thur.  
21

Fri.  
22

Sat.  
23



---

**MARCH, 1901.**

---

**Sun.**  
**24**

---

**Mon.**  
**25**

---

**Tue.**  
**26**

---

**Wed.**  
**27**

---

**Thur.**  
**28**

---

**Fri.**  
**29**

---

**Sat.**  
**30**

---

MARCH, 1901.

---

Sun.

31

---

---

---

APRIL, 1901.

---

Mon.

1

---

Tue.

2

---

Wed.

3

---

Thur.

4

---

Fri.

5

---

Sat.

6

---

---

**APRIL, 1901.**

---

**Sun.**

**7**

---

**Mon.**

**8**

---

**Tue.**

**9**

---

**Wed.**

**10**

---

**Thur.**

**11**

---

**Fri.**

**12**

---

**Sat.**

**13**

---

---

**APRIL, 1901.**

---

**Sun.**

**14**

---

**Mon.**

**15**

---

**Tue.**

**16**

---

**Wed.**

**17**

---

**Thur.**

**18**

---

**Fri.**

**19**

---

**Sat.**

**20**

---

APRIL, 1901.

---

Sun.

21

---

Mon.

22

---

Tue.

23

---

Wed.

24

---

Thur.

25

---

Fri.

26

---

Sat.

27

---

---

APRIL, 1901.

---

Sun.  
28

---

Mon.  
29

---

Tue.  
30

---

---

MAY, 1901.

---

Wed.  
1

---

Thur.  
2

---

Fri.  
3

---

Sat.  
4

---

---

MAY, 1901.

---

Sun.

5

---

Mon.

6

---

Tue.

7

---

Wed.

8

---

Thur.

9

---

Fri.

10

---

Sat.

11

---

---

MAY, 1901.

---

Sun.

12

---

Mon.

13

---

Tue.

14

---

Wed.

15

---

Thur.

16

---

Fri.

17

---

Sat.

18

---



---

**MAY, 1901.**

---

**Sun.**

**19**

---

**Mon.**

**20**

---

**Tue.**

**21**

---

**Wed.**

**22**

---

**Thur.**

**23**

---

**Fri.**

**24**

---

**Sat.**

**25**

---

**You** will be surprised at the immense variety of useful and ornamental articles that you can buy for 5 and 10 cents.

**HOUSE FURNISHING-  
GOODS,  
CHINA WARE,  
GLASS WARE,  
NOTIONS,  
TOYS,  
STATIONERY  
AND  
NOVELTIES.**

Nothing over 10 cents at the

**5 and 10 Cent Store,**  
225 State and 231 N. Henry Sts.

---

**SIDNEY P. RUNDELL,**  
**HIGH CLASS HATTER**  
**AND**  
**MEN'S FURNISHER.**

---

**7 EAST MAIN STREET.**

---

## **ALL TEXT BOOKS**

Used in the University can be found and are sold at the lowest prices at

**JAMES E. MOSELEY'S,**  
**19 Pinckney Street, East Side Capitol  
Square.**

BRANCH: 836 State Street. MADISON, WIS.

---

MAY, 1901.

---

Sun.

26

---

Mon.

27

---

Tue.

28

---

Wed.

29

---

Thur.

30

---

Fri.

31

---

---

JUNE, 1901.

---

Sat.

1

---



Suits to order - \$15.00  
AND UP.

Overcoats to order \$15 00  
AND UP.

Pants to order - - \$3.00  
AND UP.

---

Samples and measurement blank  
sent on application.

---

**PEOPLE'S TAILORING CO.**

250-252 W. Water St.,

**MILWAUKEE.**

---

**JUNE, 1901.**

---

**Sun.**

**2**

---

**Mon.**

**3**

---

**Tue.**

**4**

---

**Wed.**

**5**

---

**Thur.**

**6**

---

**Fri.**

**7**

---

**Sat.**

**8**

# **F. A. OVERBECK**

**Jeweler and Optician,**

Everything in the Jewelry line. Fraternity  
pins a specialty.

**NO CHARGE FOR TESTING EYES.**

---

Be sure that you take  
your Y. M. C. A. ticket  
with you. It is good in  
all associations in the  
United States.

---

**DO YOU KNOW**

THAT THE

## **Ætna Life Insurance Co.**

**OF HARTFORD, CONN.,**

charges you no more annually for a Partic-  
ipating **Fifteen Payment Life Policy**  
than the other leading companies  
charge for a **Twenty Payment Life**  
**Policy** of the same kind?

Good and efficient men wanted as  
district agents. Get rates and other  
information from

**ALBERT E. MIELENZ,**

GENERAL AGENT,

**91 Wisconsin St., MILWAUKEE, WIS**

---

---

**JUNE, 1901.**

---

**Sun.**

**9**

---

**Mon.**

**10**

---

**Tue.**

**11**

---

**Wed.**

**12**

---

**Thur.**

**13**

---

**Fri.**

**14**

---

**Sat.**

**15**

---

1851.

1900.

INSURE WITH

**The Phoenix Mutual Life**

**Insurance Co.,**

HARTFORD, CONN.

---

Special Plans for Literary People.

Samples sent free upon application.

---

**JAMES S. NORRIS, General Manager,**

Suite 510-512 Goldsmith Bldg.,

**MILWAUKEE, WIS.**



**PIPER BROS.,**

**Grocers.**

Our prices are always right.

**14 E. MIFFLIN and MARKET SQUARE**

---

**CHAS. H. HALL, M. D., '70**

(First National Bank Block).

---

In addition to general practice, treats  
diseases of

**Throat and Lungs.**

---

OFFICE HOURS:

8 to 9 a. m. ; 1:30 to 4 and 7 to 8 p.m.

Sunday from 12 m. to 1 p. m.

THE U. W. FAVORITE  
ESTABLISHMENT.

# Olson & Veerhusen,

THE BIG STORE.

---

CLOTHIERS, FURNISHERS  
AND TAILORS.  
LARGEST STOCK IN THE STATE.

---

7 and 9 N. Pinckney Street.

---

## ACADEMIC YEAR, 1900-1901.

First Semester opens Sept. 26, closes  
Feb. 9.

Examinations for admission, Tuesday  
and Wednesday, Sept. 25 and 26.

Registration days, Sept. 24-26.

First recitations, Thursday morning,  
Sept. 27.

Legal holiday, Thanksgiving, Nov. 29.

Christmas recess, Saturday, Dec. 22-  
Tuesday, Jan. 1, inclusive.

Examination week, first semester, Feb.  
4-8.

First semester closes, Saturday, Feb. 9.  
Second Semester opens Monday, Feb.  
11, closes June 20.

Registration day, second semester,  
Monday, Feb. 11.

Examination days for second semes-  
ter, Thursday and Friday, Feb. 7, 8.

Legal holiday, Friday, Feb. 22.

Easter recess, Thursday, April 11-  
Monday, April 15, inclusive.

Legal Holiday, Thursday, May 30.

Examination week, second semester,  
June 10-14.

Commencement, Thursday, June 20.

1845